



HOLTERMAN 53 COMMANDER



HOLTERMAN 53 COMMANDER

BROKER'S COMMENTS

The Holterman 53 Commander "Easy Rider" is a beautiful modern and new built ship, built by the very experienced shipyard Holterman in Meppel. This ship has fantastic sailing characteristics with a bow and a stern thruster with super modern navigation equipment. The Holterman lends itself extremely well for a longer stay on board, has a kabola central heating with air conditioning, washing machine and drayer and two bathrooms. If you are curious, you can view the ship in our covered sales harbor in Sneek.

Arne Doodeman

SPECIFICATIONS

Dimensions	16.00 x 4.70 x 1.25 (m)	Builder	Holterman Shipyard Meppel
Built	2019	Cabins	2
Material	Steel	Berths	4
Engine(s)	2 x Volvo Penta D4-180-E-I diesel	Hp/Kw	2 x 180.00 (hp), 132.30 (kw)
Asking price	sold (VAT)	Lying	at sales office

CONTACT

Sales office	De Valk Sneek	Telephone	+31 (0)515 42 80 30
Address	Zwolsmanweg 7 8606 KC Sneek NL	E-mail	sneek@devalk.nl

DISCLAIMER

These particulars are given in good faith as supplied but cannot be guaranteed.



HOLTERMAN 53 COMMANDER

GENERAL

Model	HOLTERMAN 53 COMMANDER
Type	motor yacht
LOA (m)	16,00
Beam (m)	4,70
Draft (m)	1,25
Air draft (m)	5,25
Air draft min (m)	3,46
Headroom (m)	1,95
Year built	2019
Builder	Holterman Shipyard Meppel
Country	The Netherlands
Designer	Trimm Design
Displacement (t)	30
CE norm	A
Hull material	steel
Hull colour	grey
Hull shape	round-bilged
Keel type	box keel
Superstructure material	steel
Rubbing strake	stainless steel
Deck material	steel
Deck finish	synthetic teak
Superstructure deck finish	synthetic teak
Cockpit deck finish	paint
Antifouling (year)	2019
Window frame	Glued
Window material	double glazing
Portholes	Glued
Insulation	foam
Mast can be lowered	electric



HOLTERMAN 53 COMMANDER

Fuel tank (litre)	steel 1985 ltr
Level indicator (fuel tank)	yes
Freshwater tank (litre)	polyethylene 1100 ltr
Level indicator (freshwater)	yes
Blackwater tank (litre)	polyethylene 480 ltr
Level indicator (blackwater)	yes
Wheel steering	hydraulic
Inside helm position	yes
Outside helm position	1x Joystick Salon/ 2 x Joystick outside.

ACCOMMODATION

Cabins	2
Berths	4
Interior	teak
Floor	wood
Aft deck	yes
Saloon	yes
Headroom saloon (m)	2,00 mtr
Heating	central heating Kabola KB 40 Ecoline
Air-conditioning	yes
Sliding door to aft deck	yes
Opening door to aft deck	yes
Galley	yes
Countertop	corian
Sink	stainless steel
Cooker	induction 4x
Extractor	Miele Downdraft
Fridge	1 x 110 ltr/ 1 x 180 ltr/ 1 x 40 ltr
Freezer	yes
Hot water system	220V or central heating
Water pressure system	electrical



HOLTERMAN 53 COMMANDER

Owners cabin	French bed
Bed length (m)	2,00 x 1,70 mtr
Wardrobe	hanging and drawers
Bathroom	en suite
Toilet	en suite Plamus
Toilet system	electric
Wash basin	in the bathroom Corian
Shower	en suite
Guest cabin 1	twin single
Bed length (m)	2,10
Wardrobe	hanging and drawers
Bathroom	en suite
Toilet	separate
Toilet system	electric Plamus
Wash basin	in the bathroom
Shower	en suite

MACHINERY

No of engines	2
Make	Volvo Penta
Type	D4-180-E-I
HP	180
kW	132,30
Fuel	diesel
Year installed	2018
Maximum speed (kn)	19
Cruising speed (kn)	15
Engine hours	376
Engine cooling system	freshwater heat exchanger
Drive	shaft
Engine controls	electrical



HOLTERMAN 53 COMMANDER

Gearbox	hydraulic
Bowthruster	electric 300 Kgf
Propeller type	fixed
Propeller shaft material	stainless steel
Shaft lubrication	water
Electric bilge pump	yes
Electrical installation	12/ 24/ 220 volt
Generator	wet exhaust
Start battery	2 x 140 Amp
Service battery	6 x 220 Amp
Generator battery	1 x Optima 50 Amp
Battery charger/inverter	Victron 24/ 8000/200
Diode battery combiners	yes
Shorepower	yes
Insulation transformer	yes
Watermaker	Zen 30
Stabilizers	fin DMS

NAVIGATION

Electric compass	Garmin Yachtcontrol
Depth sounder	Garmin Yachtcontrol
Depth sounder/log	Garmin Yachtcontrol
Windset	Garmin Yachtcontrol
VHF	Garmin Yachtcontrol
Autopilot	Garmin Yachtcontrol
Rudder angle indicator	Garmin Yachtcontrol
Plotter/GPS	Garmin Yachtcontrol
AIS transponder	Garmin Yachtcontrol
Camera	Garmin Yachtcontrol

EQUIPMENT



HOLTERMAN 53 COMMANDER

Cockpit cover	yes
Cockpit cushions	yes
Cockpit table	yes
Cockpit chairs	yes
Bathing platform	yes
Deck shower	yes
Anchor	CQR Plough Rvs
Anchor chain	yes
Windlass	electrical Quick
Sea railing	stainless steel
Wiper	3 x
Horn	electric
Fenders	yes
Mooring lines	yes
TV	2 x
Satellite	yes
Radio-cd player	JVC
Speakers in salon	2 x
Speakers in cabin	2 x
Fire extinguisher	
Extinguisher in engine room	yes
Extra info	USB Conection



HOLTERMAN 53 COMMANDER



HOLTERMAN 53 COMMANDER



HOLTERMAN 53 COMMANDER



HOLTERMAN 53 COMMANDER



HOLTERMAN 53 COMMANDER



HOLTERMAN 53 COMMANDER



HOLTERMAN 53 COMMANDER



HOLTERMAN 53 COMMANDER



HOLTERMAN 53 COMMANDER



HOLTERMAN 53 COMMANDER



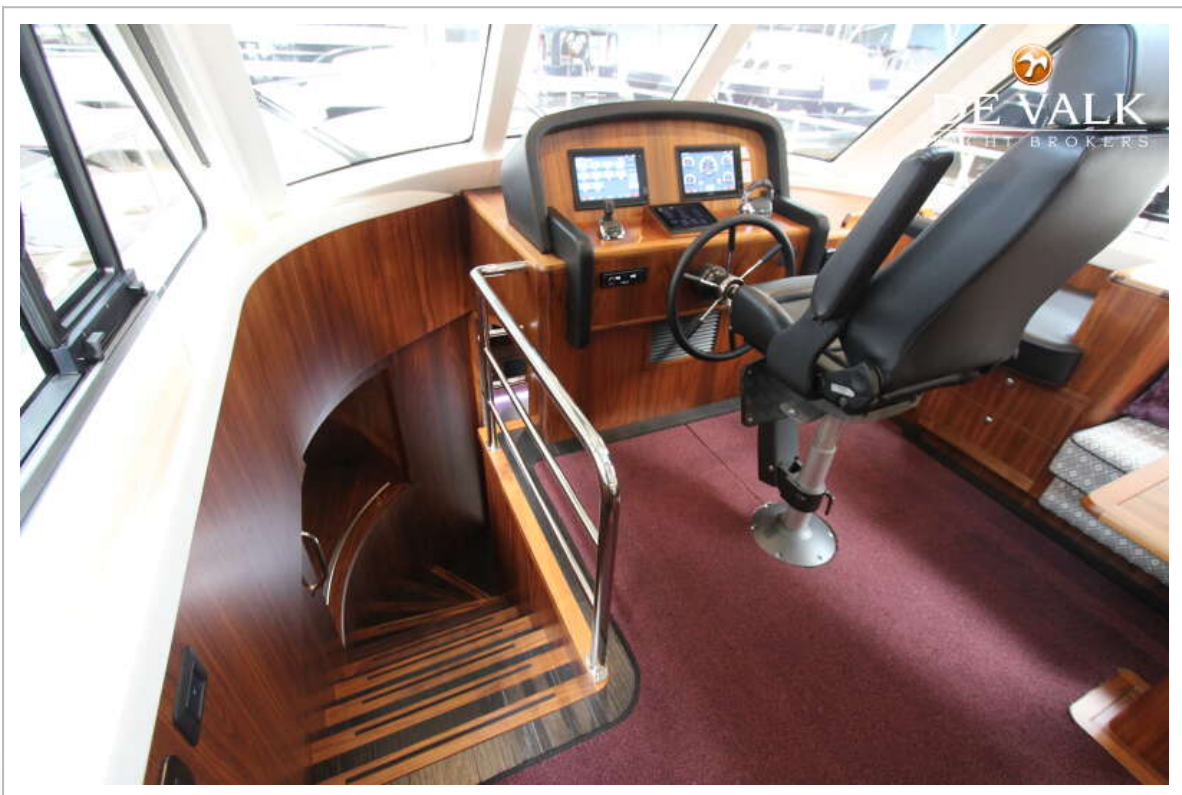
HOLTERMAN 53 COMMANDER



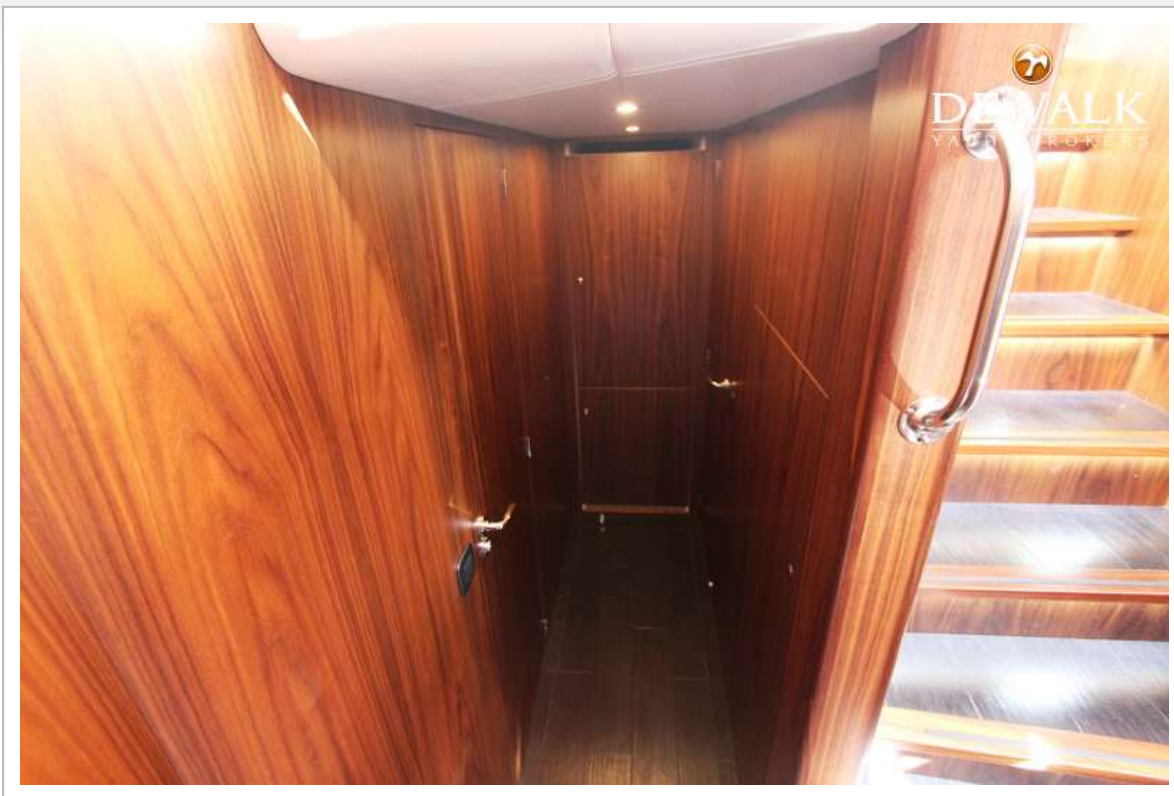
HOLTERMAN 53 COMMANDER



HOLTERMAN 53 COMMANDER



HOLTERMAN 53 COMMANDER



HOLTERMAN 53 COMMANDER



HOLTERMAN 53 COMMANDER



HOLTERMAN 53 COMMANDER



HOLTERMAN 53 COMMANDER



HOLTERMAN 53 COMMANDER



HOLTERMAN 53 COMMANDER

