



DE VALK  
YACHT BROKERS



DEHLER 41 DS



DE VALK  
YACHT BROKERS

BROKERAGE | CHARTER | BERTHS | FINANCE | INSURANCE | YACHT MANAGEMENT

## BROKER'S COMMENTS

The Dehler 41DS version is an innovative J / V design. A combination of an easy to handle deck saloon sailing yacht with good performance sailing characteristics. "Flying Carpet" is very well equipped with electric winches, bow thruster, self-tacking reefable jib. This makes her ideal for "push-button sailing" with a small crew. Very well maintained by her 1st and 2nd owner; hull repainted, new sails & equipment. From the deck saloon you have a lot of daylight inside and an excellent panoramic view to the outside, which makes staying on board more pleasant and extends the season.

*Henri van Eelen*

## SPECIFICATIONS

<b>Dimensions</b>	12.45 x 3.90 x 1.95 (m)	<b>Builder</b>	Dehler Yachtbau GmbH
<b>Built</b>	2004	<b>Cabins</b>	2
<b>Material</b>	GRP	<b>Berths</b>	6
<b>Engine(s)</b>	1 x Yanmar 4JH4E diesel	<b>Hp/Kw</b>	56.00 (hp), 41.16 (kw)
<b>Asking price</b>	sold (VAT )	<b>Lying</b>	elsewhere / Not at sales office

## CONTACT

<b>Sales office</b>	De Valk Hindeloopen B.V.	<b>Telephone</b>	+31 514 52 40 00
<b>Address</b>	Oosterstrand 1 8713 JS Hindeloopen NL	<b>E-mail</b>	hindeloopen@devalk.nl

## DISCLAIMER

These particulars are given in good faith as supplied but cannot be guaranteed.



## GENERAL

Model	DEHLER 41 DS
Type	sailing yacht
LOA (m)	12,45
LWL (m)	11,05
Beam (m)	3,90
Draft (m)	1,95
Air draft (m)	19,50
Headroom (m)	2,00
Year built	2004
Builder	Dehler Yachtbau GmbH
Country	Germany
Designer	Judel & Vrolijk
Displacement (t)	8,9
Ballast (tonnes)	cast iron and lead
CE norm	A
Hull material	GRP
Hull colour	blue
Hull shape	round-bilged
Keel type	fin keel with bulb 3,3 (t)
Superstructure material	GRP
Rubbing strake	plastic
Deck material	GRP
Deck finish	TBS non-skid profile mats
Cockpit deck finish	teak
Antifouling (year)	including waterproof primer 2019
Window frame	aluminium
Window material	polycarbonate
Deckhatch	yes
Portholes	aluminium
Fuel tank (litre)	stainless steel 160



Level indicator (fuel tank)	yes
Freshwater tank (litre)	polyethylene 2018 renewed 400 ltr in 2 tanks with inspection hatches
Level indicator (freshwater)	yes
Blackwater tank (litre)	stainless steel 65
Level indicator (blackwater)	yes
Blackwater tank extraction	deck extraction + uw line
Wheel steering	rack & pinion
Emergency tiller	yes
More info on paintwork	Hull painted 2019
Extra info	TBS non skid painted 2019

## ACCOMMODATION

Cabins	2
Berths	6
Interior	cherry
Layout	deckhouse saloon, 2 cabins and one headroom
Floor	teak and holly
Deck saloon	yes
Headroom saloon (m)	1,95
Heating	diesel ducted hot air Webasto Airtop 5000
Navigation center	yes
Chart table	yes
Aft Cabin	yes
Dinette	yes
Dinette to convert into berth	yes
Convertible berth	yes
Sliding door to cockpit	Dehler patented system
Galley	yes
Countertop	plastic
Sink	stainless steel 2x



Cooker	calor gas ENO ss
Oven	yes
Microwave	AFIX 220v
Fridge	yes
Hot water system	220V + engine Jabscopump (2017)
Water pressure system	electrical
Coffee maker	operating on inverter Nespresso 220v
Owners cabin	double bed
Bed length (m)	2,00
Wardrobe	hanging/drawers/shelves
Bathroom	en suite
Toilet	en suite
Toilet system	manual Serviced 2019
Wash basin	in the bathroom
Shower	en suite
Extra info	Big shower room with thermostatic valve
Guest cabin 1	double bed
Bed length (m)	2,00
Wardrobe	hanging and shelves
Bathroom	shared
Toilet	shared
Toilet system	manual
Wash basin	in the bathroom
Shower	shared
Extra info	cushions in saloon Alcantara
Extra info	mattresses Bultex

## MACHINERY

No of engines	1
Make	Yanmar
Type	4JH4E



# DEHLER 41 DS

HP	56
kW	41,16
Fuel	diesel
Maximum speed (kn)	7,8
Cruising speed (kn)	7
Consumption (l/hr)	3,3
Engine hours	860
Engine cooling system	freshwater heat exchanger
Drive	shaft
Shaft seal	Volvo (2018)
Engine controls	bowden cable
Gearbox	mechanical
Bowthruster	electric 50 Kgf
Thrust bearing	Aqua Drive
Propeller type	feathering Variprop SPW DF-112
Propeller blades	3
Propeller shaft material	stainless steel
Shaft lubrication	Water
Manual bilge pump	yes
Electric bilge pump	yes
Batteries	yes
Start battery	1x (2015)
Service battery	2x 200 Ah (2015)
Battery monitor	yes
Battery charger/inverter	Victron Multiplus Compact 12/1600/70 (2015)
Shorepower	with cable

## NAVIGATION

Compass	with airbubble Suunto
Electric compass	at autopilot
Depth sounder/log	Raymarine ST 60 Tridata



<b>Windset</b>	Raymarine ST 60
<b>Repeater</b>	2x; one at the wheel, one at the entrance Raymarine ST 60 Graphics Muli screen
<b>VHF</b>	with built-in GPS (2019) with handset in cockpit Ray 63 (2019) Raymarine Ray 63
<b>Autopilot</b>	with remote control Raymarine ST 6001
<b>Rudder angle indicator</b>	at Autopilot
<b>Plotter</b>	Raymarine E7, (2017)
<b>AIS receiver</b>	Garmin (2017)

## EQUIPMENT

<b>Fixed windscreen</b>	yes
<b>Sprayhood</b>	2x (2013 + old)
<b>Cockpit cover</b>	2x (2013 + old)
<b>Cockpit cushions</b>	(2015)
<b>Cockpit table</b>	yes
<b>Bathing platform</b>	yes
<b>Boarding ladder</b>	stainless steel
<b>Transom door</b>	yes
<b>Deck shower</b>	Hot & Cold
<b>Anchor</b>	Bruce
<b>Anchor chain</b>	30
<b>Windlass</b>	hydraulic Lewmar
<b>Sea railing</b>	wire Renewed (2019)
<b>Grab rail (superstructure)</b>	wood
<b>Railing side opening gates</b>	yes
<b>Pushpit</b>	yes
<b>Pulpit</b>	yes
<b>Radar reflector</b>	TRI-Lens
<b>Fenders</b>	yes
<b>Mooring lines</b>	yes
<b>TV</b>	yes



Radio	Pioneer DAB radio (2018)
DVD player	yes
Speakers in salon	yes
Fire extinguisher	2x
Latest extinguisher survey	unknown

## RIGGING

Rigging	fractional
Standing rigging	wire
Brand mast	Sparcraft
Material mast	aluminium
Spreaders	2 sets
Mainsail	Hagoort Vectran 2x reef (2018)
Mainsail cover	Dehler Main Drop System (2015)
Battcars	yes
Fully battened mainsail	yes
Jib	self tacking and reefable Hagoort Laminate (2019)
Genoa furler	Selden 300S
Genoa cover	Hagoort (2016)
Gennaker	Wittewrongel
Reefing System	quick-one-line-reefing
Backstay adjuster	tackle
Boomvang	mechanical and tackle
Multifunctional winches	halyard/sheet winches Harken ST 44E Electrical
Spi-pole	aluminium Extendable
Gennaker pole	aluminium
Extra info	jib sheet Dyneema (2019)
Extra info	running rigging Dyneema (2015)





# DEHLER 41 DS



# DEHLER 41 DS





# DEHLER 41 DS



# DEHLER 41 DS





# DEHLER 41 DS



# DEHLER 41 DS





# DEHLER 41 DS



# DEHLER 41 DS





# DEHLER 41 DS



# DEHLER 41 DS





## DEHLER 41 DS



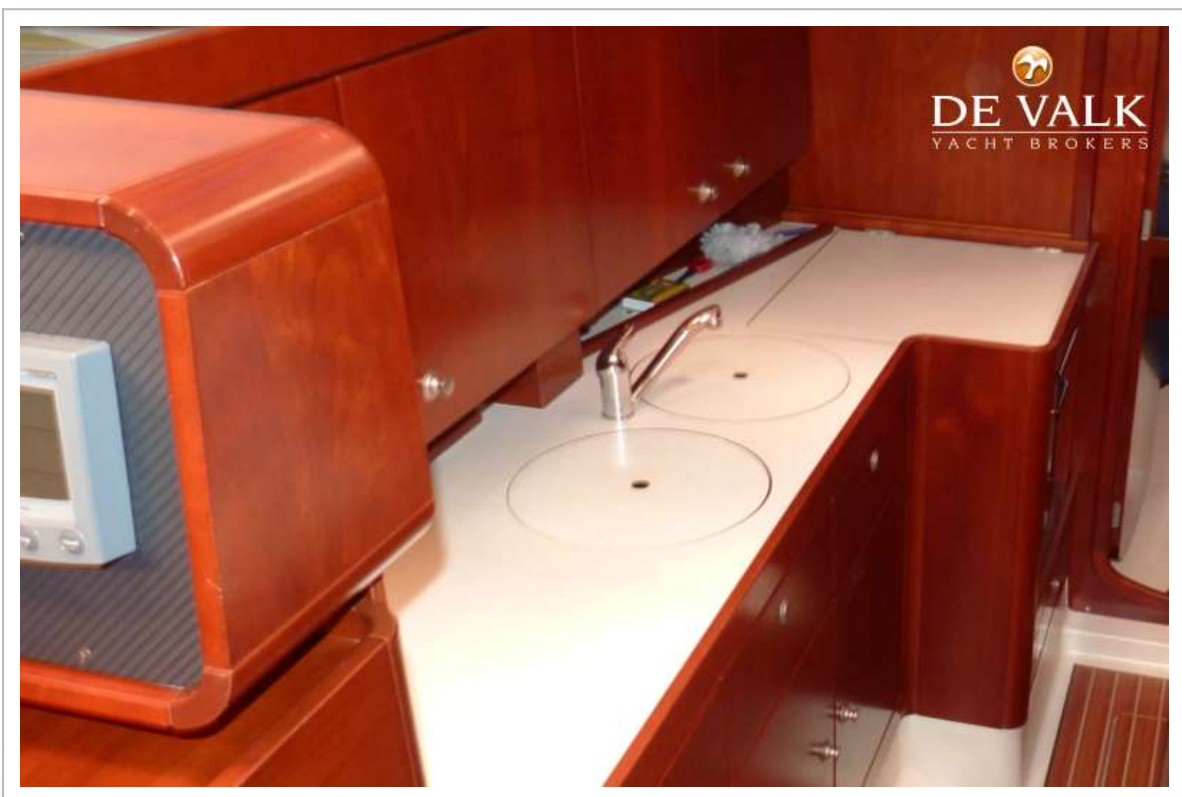
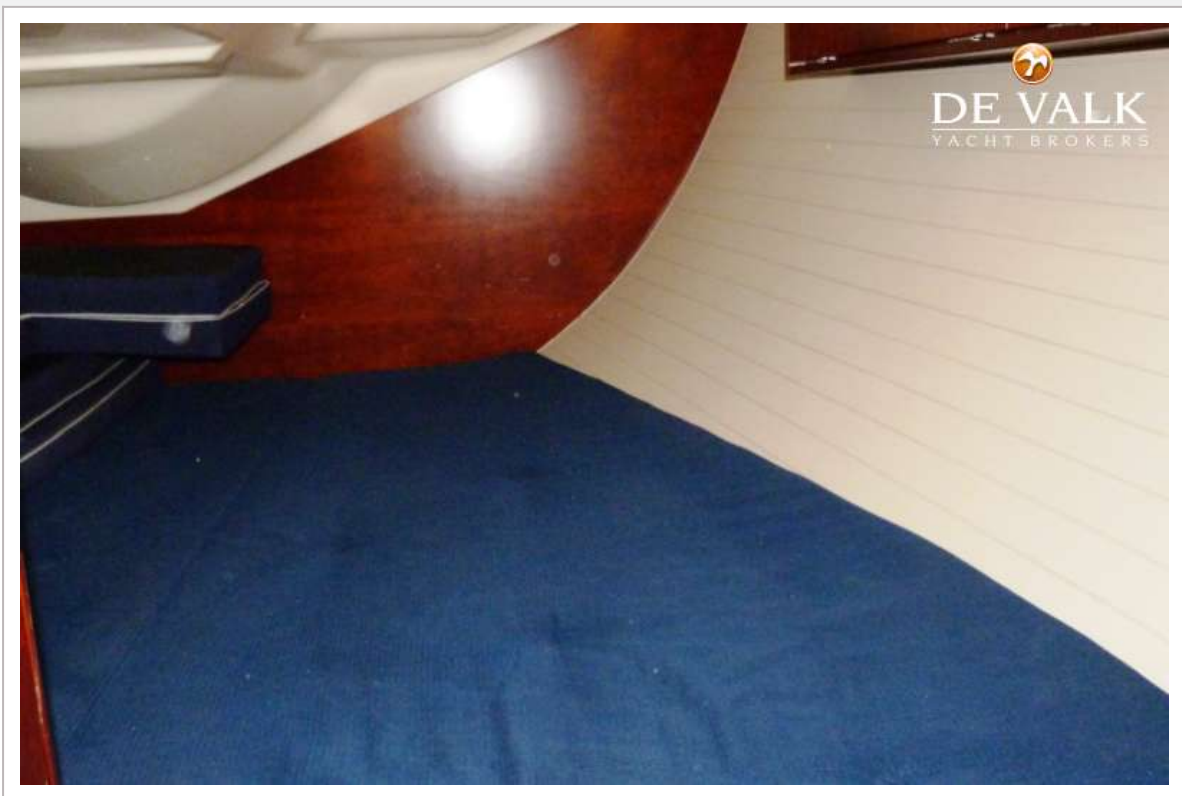
# DEHLER 41 DS

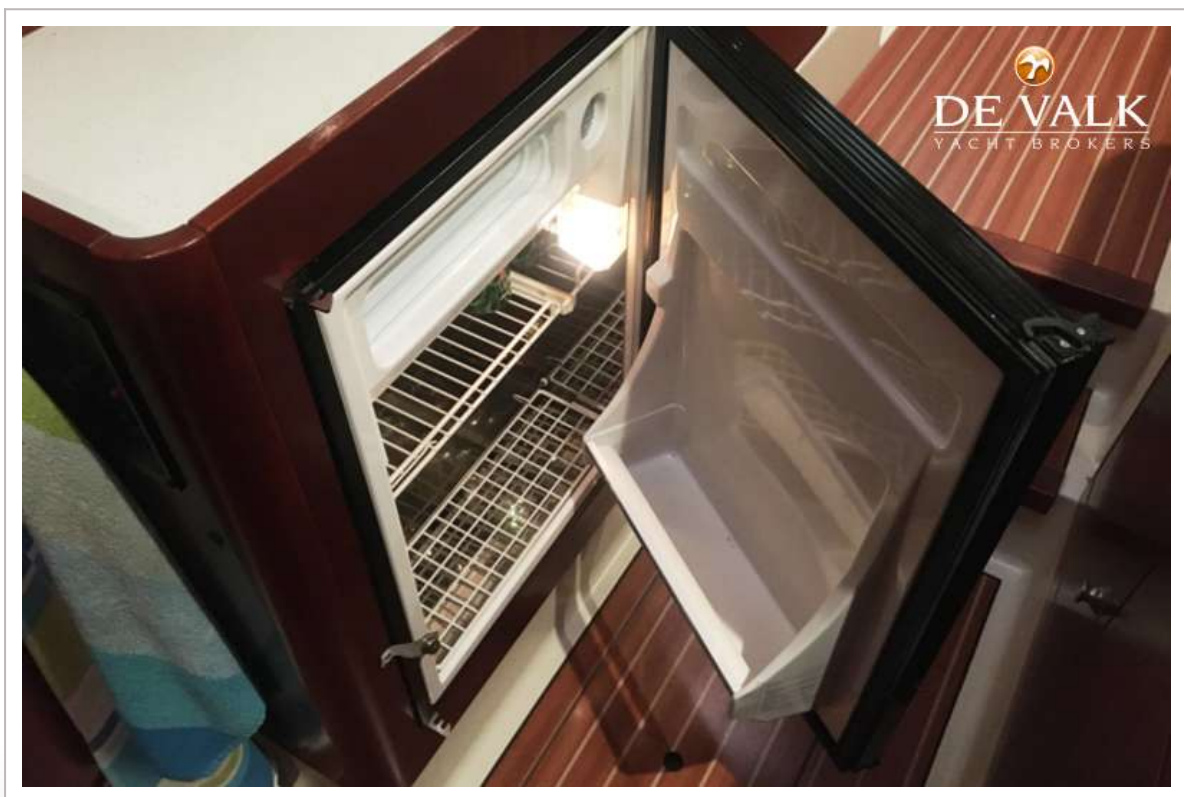




## DEHLER 41 DS







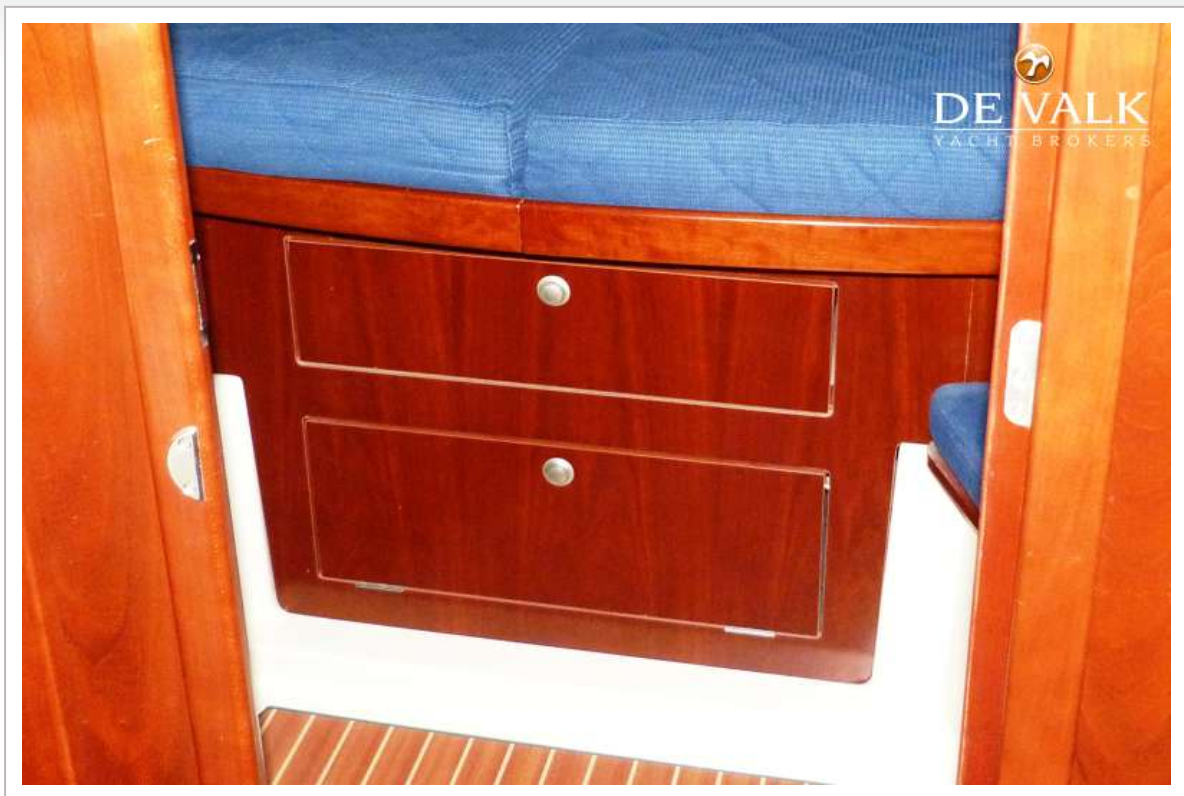


## DEHLER 41 DS

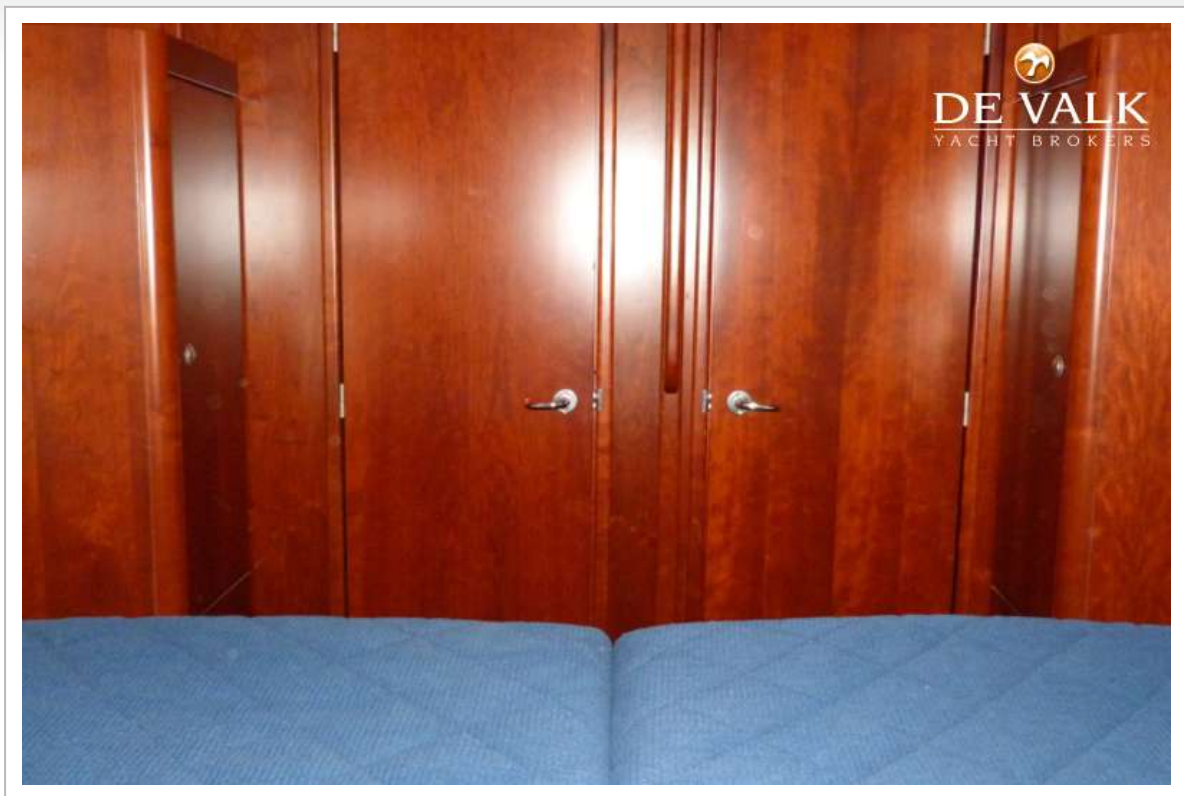




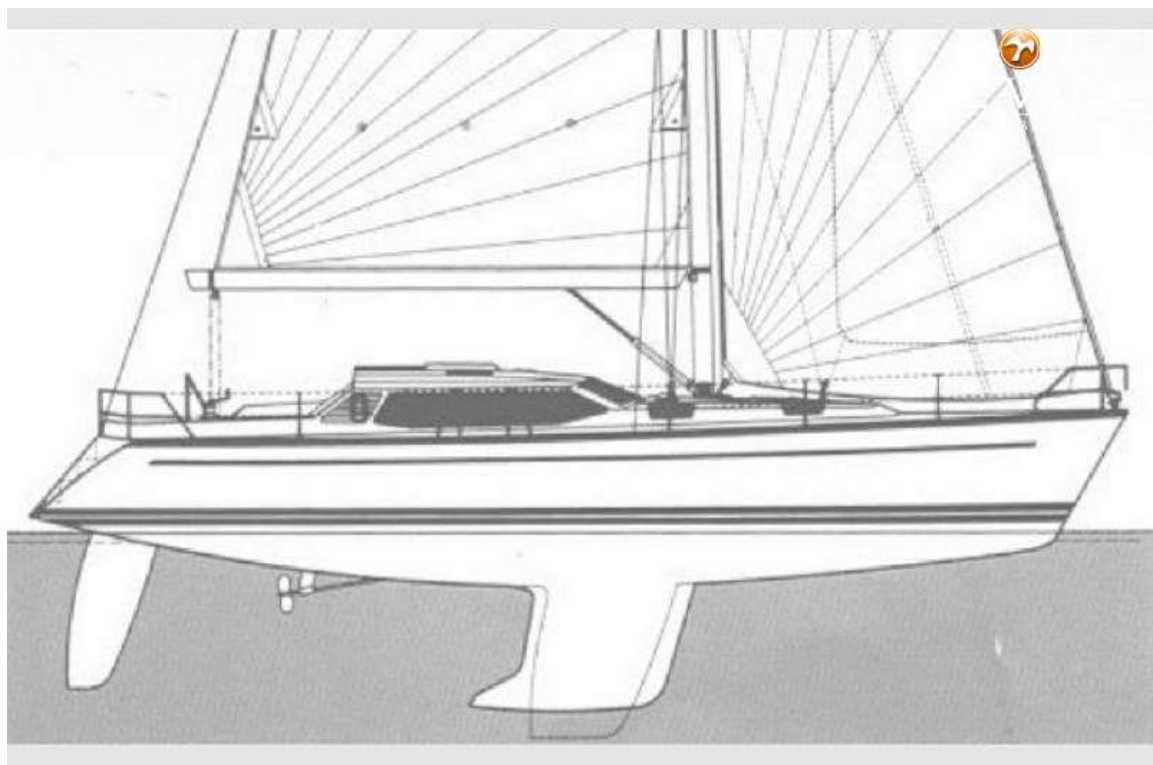
## DEHLER 41 DS



## DEHLER 41 DS



## DEHLER 41 DS





# DEHLER 41 DS

