



## ABIM CLASSIC 118

## BROKER'S COMMENTS

The ABIM-Classic 118 is a thoughtfully designed, even for novice water sports enthusiasts an easy to sail yacht thanks to sufficient horsepower, bow and stern thrusters, steering place with good overview. Spacious and light interior very suitable for both short and long stays on board. The owner's cabin has a beautiful French bed, toilet and shower separated, the cabin in the front has a third berth. Well equipped, easy to maintain because of little teak and a lot of stainless steel on deck. Recently painted, engine well maintained.

*Pieter Bosma*

## SPECIFICATIONS

<b>Dimensions</b>	11.85 x 4.10 x 1.00 (m)	<b>Builder</b>	Abim Ossenzijl
<b>Built</b>	2006	<b>Cabins</b>	2
<b>Material</b>	Steel	<b>Berths</b>	5
<b>Engine(s)</b>	1 x Volvo Penta D3 -1101B diesel	<b>Hp/Kw</b>	110.00 (hp), 80.85 (kw)
<b>Asking price</b>	sold (VAT )	<b>Lying</b>	at sales office

## CONTACT

<b>Sales office</b>	De Valk Sneek	<b>Telephone</b>	+31 (0)515 42 80 30
<b>Address</b>	Zwolsmanweg 7 8606 KC Sneek NL	<b>E-mail</b>	sneek@devalk.nl

## DISCLAIMER

These particulars are given in good faith as supplied but cannot be guaranteed.



## GENERAL

Model	ABIM CLASSIC 118
Type	motor yacht
LOA (m)	11,85
LWL (m)	10,90
Beam (m)	4,10
Draft (m)	1,00
Air draft (m)	2,47
Headroom (m)	2,00
Year built	2006
Builder	Abim Ossenzijl
Country	The Netherlands
Designer	Peter Oord
Displacement (t)	12
CE norm	C
Hull material	steel
Hull colour	yellow Zandgeel / wit
Hull thickness (mm)	10/5
Hull shape	multi hard chine
Superstructure material	steel
Superstructure (mm)	4
Deck plate thickness (mm)	4
Rubbing strake	fender rope
Deck material	steel
Deck finish	non-skid paint
Superstructure deck finish	non-skid paint
Cockpit deck finish	teak
Antifouling (year)	2018
Window frame	aluminium
Window material	tempered glass
Deckhatch	yes



Portholes	aluminium
Insulation	foam 30 mm PU
Mast can be lowered	
Fuel tank (litre)	steel 475
Level indicator (fuel tank)	yes
Freshwater tank (litre)	stainless steel 475
Level indicator (freshwater)	yes
Blackwater tank (litre)	stainless steel 200
Level indicator (blackwater)	yes
Blackwater tank extraction	deck extraction + pump
Outside helm position	hydraulic
More info on hull	yes
More info on paintwork	Hull & deck repainted

## ACCOMMODATION

Cabins	2
Berths	5
Interior	teak
Layout	two cabins, saloon, galley dinette, separate head & shower
Floor	teak and holly
Aft deck	12 m2
Saloon	yes
Headroom saloon (m)	yes
Heating	diesel ducted hot air Webasto
Aft Cabin	yes
Dinette	yes
Opening door to aft deck	yes
Galley	yes
Countertop	plastic Corian look
Sink	stainless steel
Cooker	calor gas 4-pits



Microwave	yes
Fridge	with freezing compartment 110 Ltr
Hot water system	220V + engine Boiler 70 Ltr
Water pressure system	
Owners cabin	French bed
Bed length (m)	2,00 x 1,60
Wardrobe	hanging/drawers/shelves
Bathroom	en suite
Toilet	en suite
Toilet system	electric
Shower	separate
Guest cabin 1	v-bed + single bed (3 pers.)
Bed length (m)	2,00 x 080
Wardrobe	hanging and shelves
Bathroom	shared
Toilet	shared
Toilet system	electric
Wash basin	at the toilet
Shower	shared
Washing machine/dryer combi	yes
Extra info	flyscreens for all hatches & portholes
Extra info	extractor hood above gas stove

## MACHINERY

No of engines	1
Make	Volvo Penta
Type	D3 -1101B
HP	110
kW	80,85
Fuel	diesel
Year installed	2007



Year of overhaul	renewed 6/2020 Distribution belt / Distributieriem
Maximum speed (kn)	8
Cruising speed (kn)	6,5
Consumption (l/hr)	5
Engine hours	1700
Engine cooling system	freshwater heat exchanger
Drive	shaft
Shaft seal	Volvo Penta
Engine controls	
Gearbox	hydraulic
Engine controls	bowden cable
Bowthruster	electric 75 Kgf
Sternthruster	electric
Exhaust	watercooled
Propeller type	fixed
Propeller blades	4 (RH)
Propeller shaft material	stainless steel 40 mm
Shaft lubrication	water
Manual bilge pump	yes
Electric bilge pump	2x
Electrical installation	220/12
Batteries	3
Start battery	1x
Service battery	2x 200 Amh
Sternthruster battery	1x
Battery monitor	yes
Battery charger/inverter	Victron Phoenix Multi Plus 12 3000 120
Shorepower	with cable
Extra info	board computer for engine & trip functions EVC

## NAVIGATION



Electric compass	with transponder in the mast
Depth sounder/log	Navman
Autopilot	Navman
Rudder angle indicator	yes
GPS	yes
Plotter/GPS	Garmin (2018)
AIS receiver	yes
Navigation lights	yes

## EQUIPMENT

Fixed windscreen	yes
Cockpit cover	yes
Bimini	yes
Winter cover	yes
Bathing platform	yes
Boarding ladder	stainless steel
Transom door	yes
Deck shower	yes
Anchor	Pool
Anchor chain	30 mtr
Windlass	electrical Type????
Deck wash	extra pump for cleaning anchor
Davits	stainless steel 400 Kg max lift
Davits controls	manual
Sea railing	stainless steel
Grab rail (superstructure)	stainless steel
Railing side opening gates	2x
Pushpit	yes
Pulpit	yes
Wiper	3x
Horn	electric



Fenders	yes
Mooring lines	yes
TV	yes
TV receiver	yes
Radio-cd player	yes
Cockpit speakers	yes
Speakers in salon	yes
Fire extinguisher	yes
Extinguisher in engine room	yes
Auto extinguisher system	yes

## RIGGING

Mast lowering system	yes
----------------------	-----





# ABIM CLASSIC 118



# ABIM CLASSIC 118







# ABIM CLASSIC 118



# ABIM CLASSIC 118





# ABIM CLASSIC 118



# ABIM CLASSIC 118





# ABIM CLASSIC 118

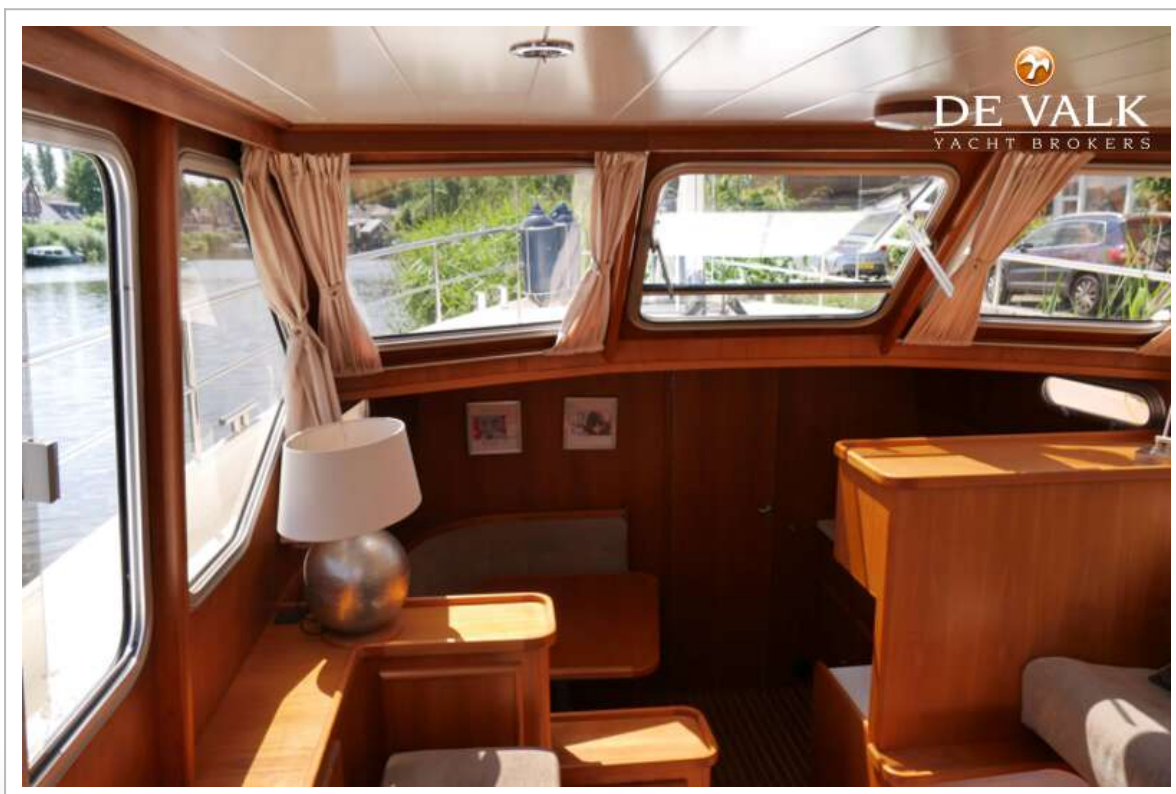




# ABIM CLASSIC 118



## ABIM CLASSIC 118

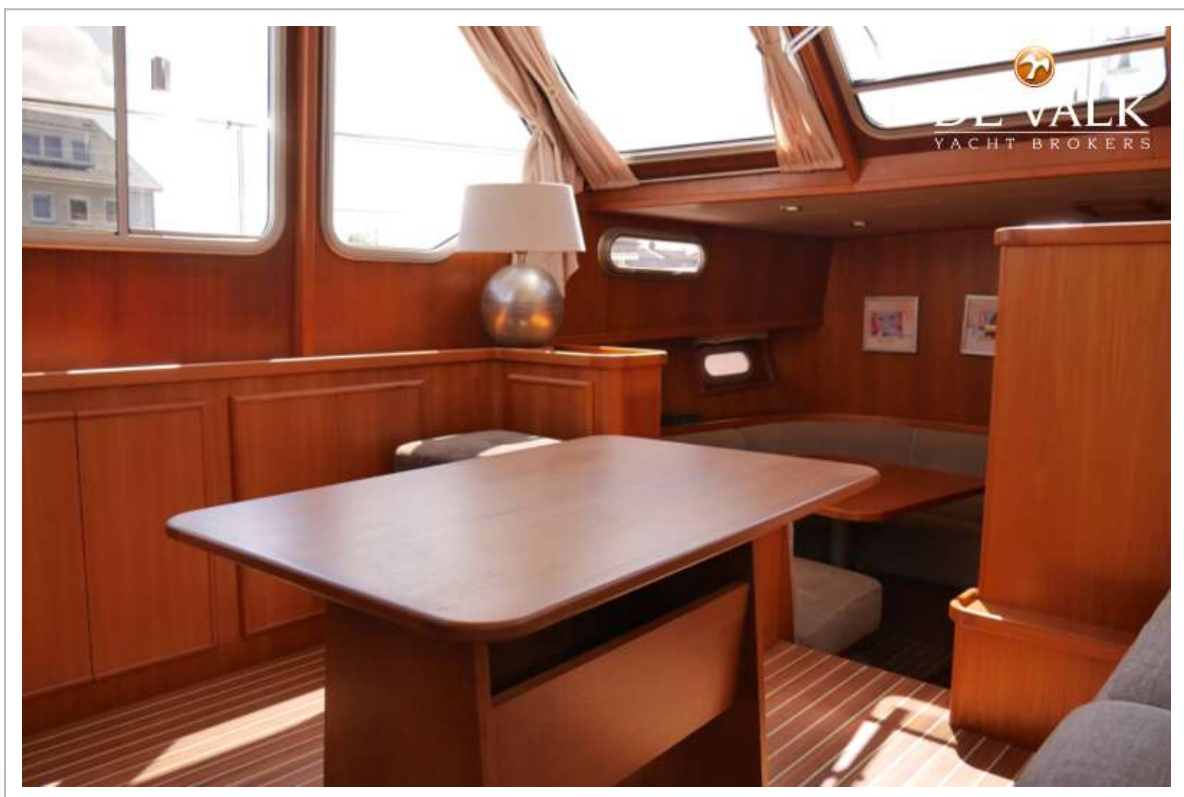
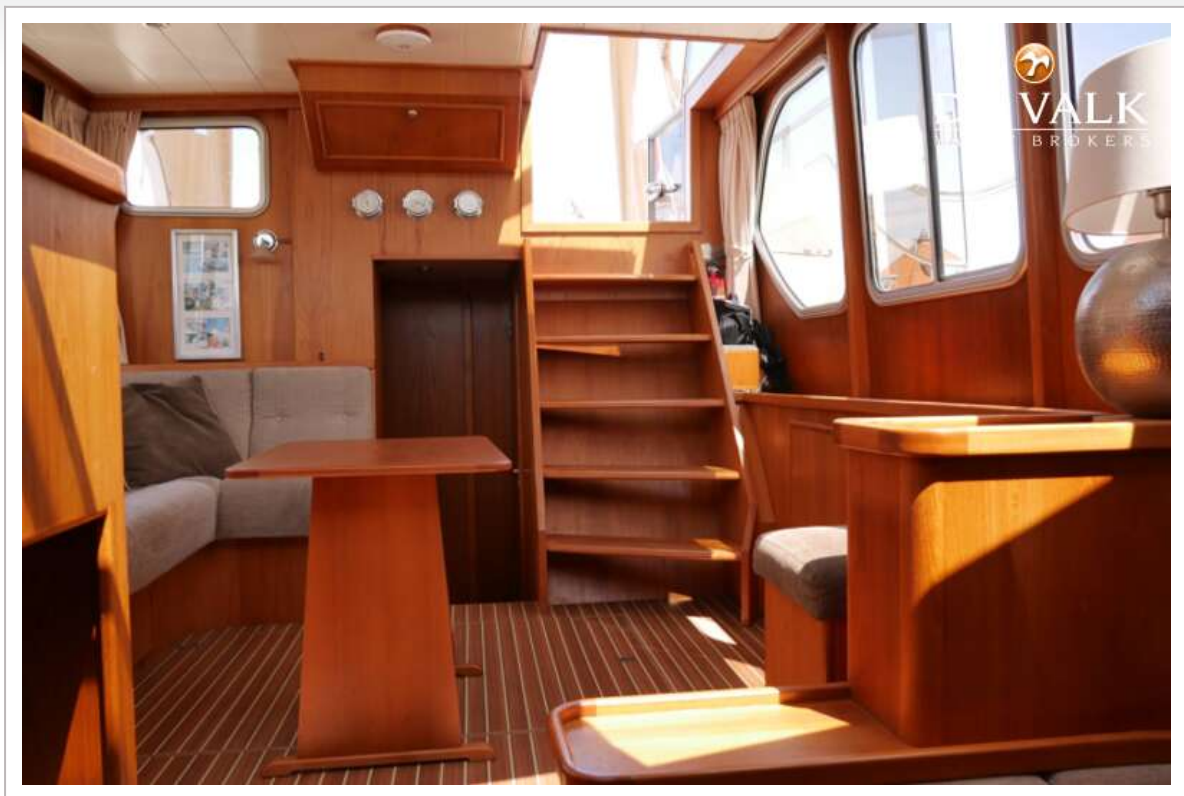




## ABIM CLASSIC 118



# ABIM CLASSIC 118





## ABIM CLASSIC 118



## ABIM CLASSIC 118





## ABIM CLASSIC 118

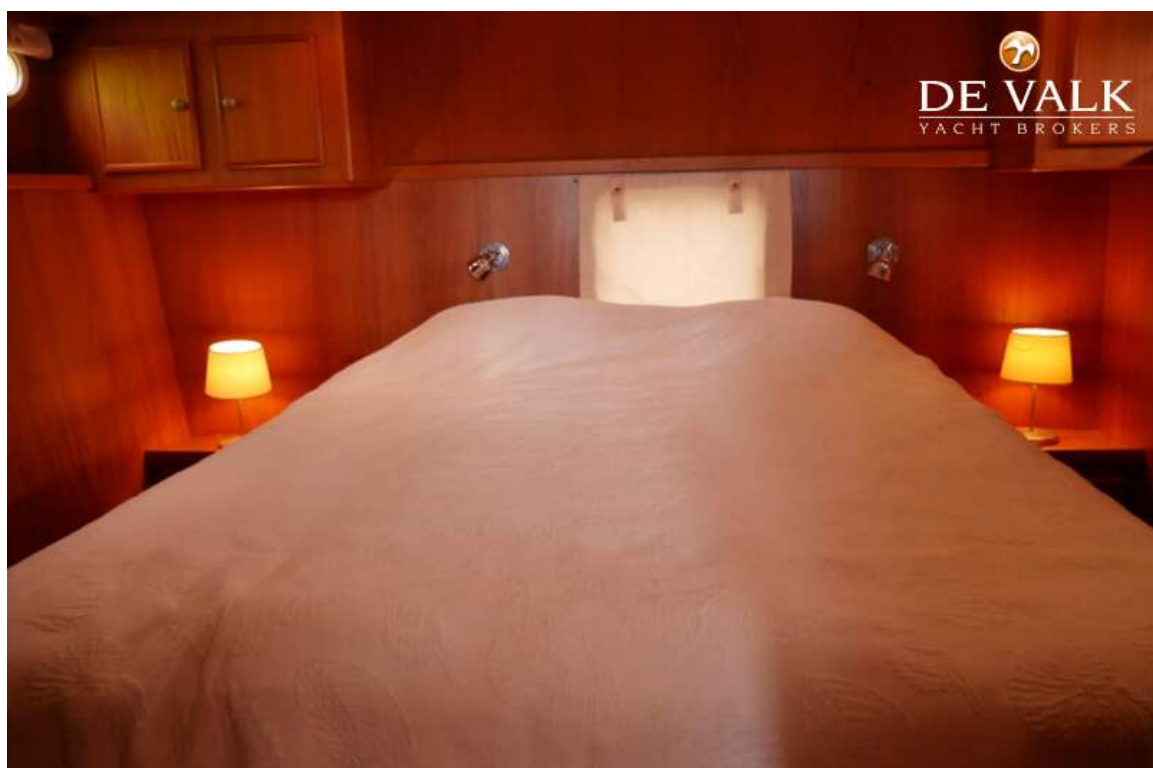
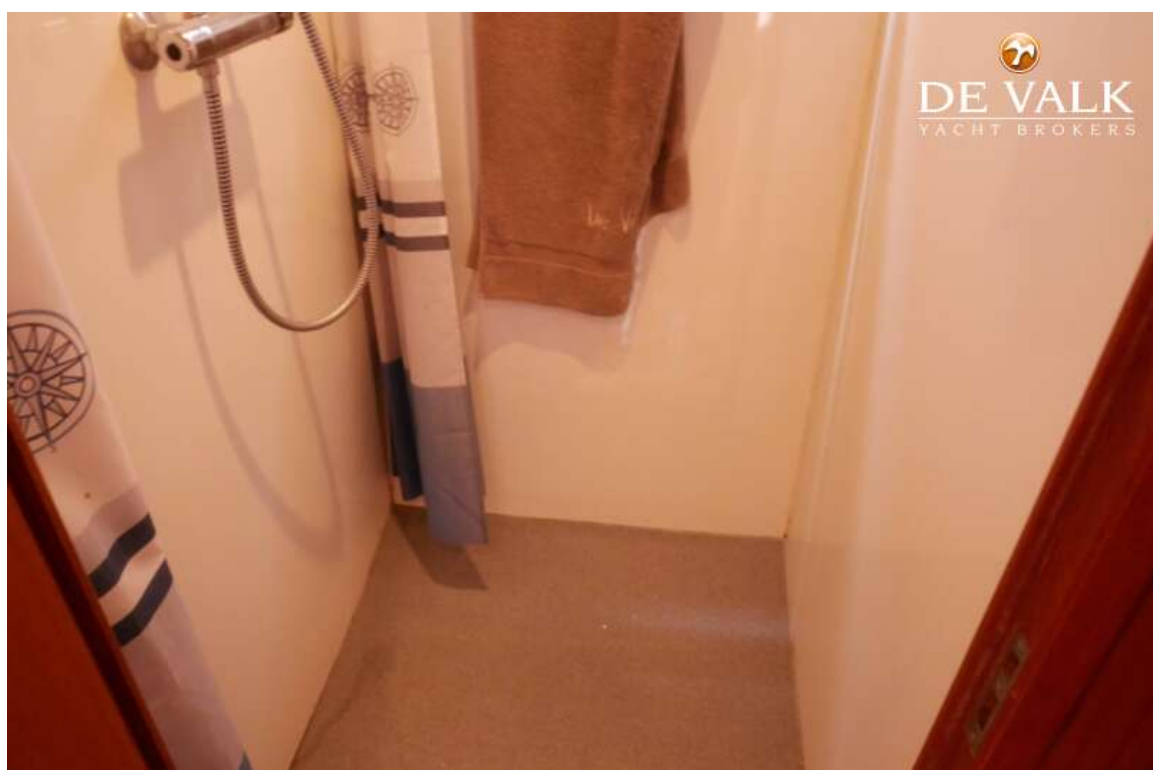


## ABIM CLASSIC 118

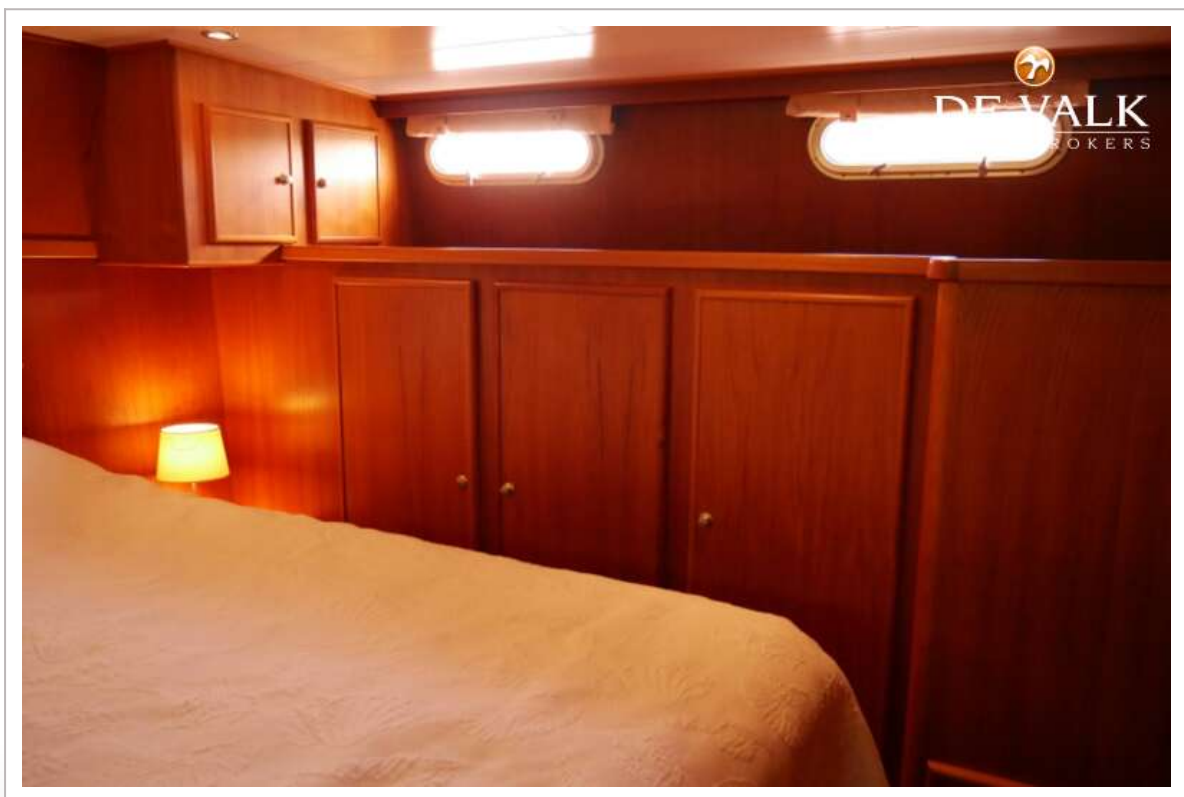
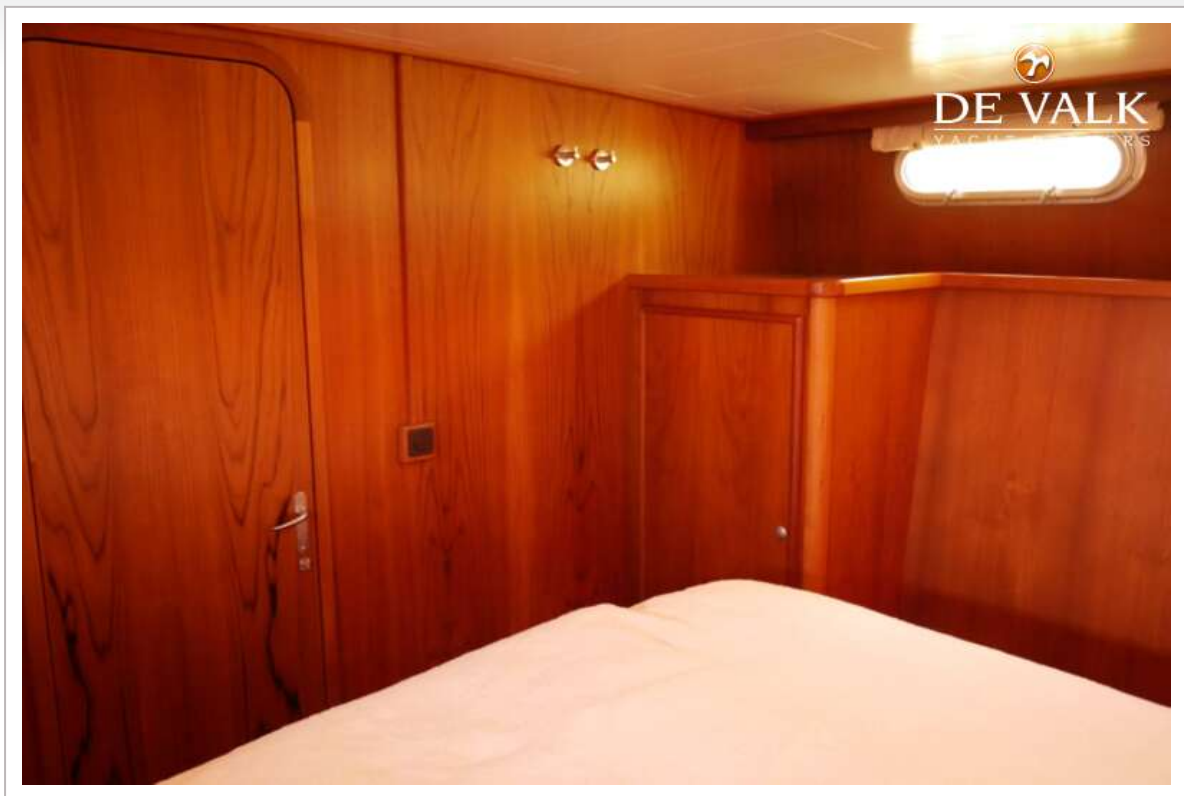




## ABIM CLASSIC 118



## ABIM CLASSIC 118



# ABIM CLASSIC 118

