



HALLBERG RASSY 36

HALLBERG RASSY 36

BROKER'S COMMENTS

This Hallberg Rassy 36 is designed by German Frers and she excellent sailing capacities and is easy to manouver and handling due to her bowthruster and stoway mast. Below decks the accommodations is comfortable and spacious. Over the years the owners kept her in good condition. Please contact us to make an appointment to visit this Hallberg Rassy 36. She is lying on shore in Sint Annaland and can be viewed 7 days a week

Joris van de Rijt

SPECIFICATIONS

Dimensions	10.87 x 3.55 x 1.70 (m)	Builder	Hallberg Rassy Varv
Built	1992	Cabins	2
Material	GRP	Berths	6
Engine(s)	1 x Volvo Penta MD 22 diesel	Hp/Kw	57.00 (hp), 41.95 (kw)
Asking price	sold (VAT)	Lying	at sales office

CONTACT

Sales office	De Valk Sint Annaland B.V.	Telephone	+31 (0)166 601 000
Address	Koelhuisweg 4 4697 RM Sint Annaland NL	E-mail	sintannaland@devalk.nl

DISCLAIMER

These particulars are given in good faith as supplied but cannot be guaranteed.



GENERAL

Model	HALLBERG RASSY 36
Type	sailing yacht
LOA (m)	10,87
LWL (m)	8,72
Beam (m)	3,55
Draft (m)	1,70
Air draft (m)	16,50
Headroom (m)	1,91
Year built	1992
Builder	Hallberg Rassy Varv
Country	Sweden
Designer	German Frers
Displacement (t)	7,5
Ballast (tonnes)	lead 3,4
CE norm	NA
Hull material	GRP
Hull colour	white
Hull shape	round-bilged
Keel type	fin keel
Superstructure material	GRP
Rubbing strake	
Deck material	GRP
Deck finish	teak
Superstructure deck finish	non-skid moulded in
Cockpit deck finish	teak
Antifouling (year)	2020
Dorades	yes
Window frame	aluminium
Window material	perspex
Deckhatch	yes



Fuel tank (litre)	stainless steel 1x 165 + 1x 180
Level indicator (fuel tank)	yes
Freshwater tank (litre)	stainless steel 1x 250 + 1x 105
Level indicator (freshwater)	(defect)
Blackwater tank (litre)	stainless steel
Blackwater tank extraction	deck extraction + uw line
Wheel steering	cable steering
Emergency tiller	yes

ACCOMMODATION

Cabins	2
Berths	6
Interior	mahogany
Layout	yes
Floor	teak
Headroom saloon (m)	1,91
Heating	diesel ducted hot air Webasto
Navigation center	yes
Chart table	yes
Dinette	yes
Galley	yes
Countertop	wood
Sink	stainless steel
Cooker	calor gas 2 burner
Oven	yes
Fridge	Frigoboat 110 Liter with freezer compartment
Hot water system	220V + engine
Water pressure system	
Owners cabin	v-bed
Bed length (m)	2,00 x 1,50
Wardrobe	hanging/drawers/shelves



Bathroom	shared
Toilet	shared
Toilet system	manual
Wash basin	in the bathroom
Shower	shared
Guest cabin 1	double bed + single bed
Bed length (m)	2,00 x 1,30 + 2,05 x 70
Wardrobe	drawers and shelves
Extra info	New cushions and upholstery in salon (2020)
Extra info	New curtains (2020)

MACHINERY

No of engines	1
Make	Volvo Penta
Type	MD 22
HP	57
kW	41,95
Fuel	diesel
Year installed	1992
Maximum speed (kn)	7
Cruising speed (kn)	5
Consumption (l/hr)	4
Engine hours	674
Engine cooling system	freshwater heat exchanger
Drive	shaft
Engine controls	mechanical
Gearbox	mechanical
Bowthruster	electric Vetus 3kw
Propeller type	fixed
Propeller blades	3
Propeller shaft material	stainless steel



Shaft lubrication	water
Manual bilge pump	yes
Electric bilge pump	yes
Electrical installation	12v / 220v
Start battery	Optima red top (2014)
Service battery	2x 145 amp (2020)
Battery charger	Mastervolt 12-35
Inverter	Mastervolt 12-300
Solar panel	On superstructure (Epever)
Shorepower	with cable

NAVIGATION

Compass	yes
Depth sounder	Raymarine ST60
Log	Raymarine ST60
Windset	Raymarine ST60
Repeater	Raymarine ST60 Graphic under sprayhood and charttable
VHF	Shipmate RS 8110
Autopilot	Robertson AP 200 sail
GPS	Furuno GPS/WAAS
Radar/GPS/plotter	Furuno RP-110
AIS receiver	yes
Navigation lights	yes

EQUIPMENT

Fixed windscreen	yes
Sprayhood	(2020)
Cockpit table	yes
Boarding ladder	stainless steel
Anchor	CQR Plough
Anchor chain	yes



Windlass	electrical Lofrans (Up only)
Sea railing	wire
Grab rail (superstructure)	teak
Railing side opening gates	yes
Pushpit	yes
Pulpit	yes
Lifejackets	2x
Lifebuoy	yes
Radar reflector	yes
Fenders	yes
Mooring lines	yes
Radio-cd player	Sony
Speakers in salon	yes
Clock - barometer	yes
Fire extinguisher	yes

RIGGING

Rigging	sloop
Standing rigging	wire (2007)
Brand mast	Seldén (2007)
Material mast	aluminium
Spreaders	2 x 2
Mainsail	North Sails (2007)
Stoway mast	Changed from normal mast to stoway mast in 2007
Genoa	North Sails (2007)
Genoa furler	Furlex 300S
Gennaker	yes
Spinnaker	yes
Reefing System	main in-mast furling
Boomvang	gasspring Selden
Genoa sheetwinches	2x Lewmar 46 st



Halyard winches

2x Lewmar 16 st

Spinnaker winch

2x Lewmar 40



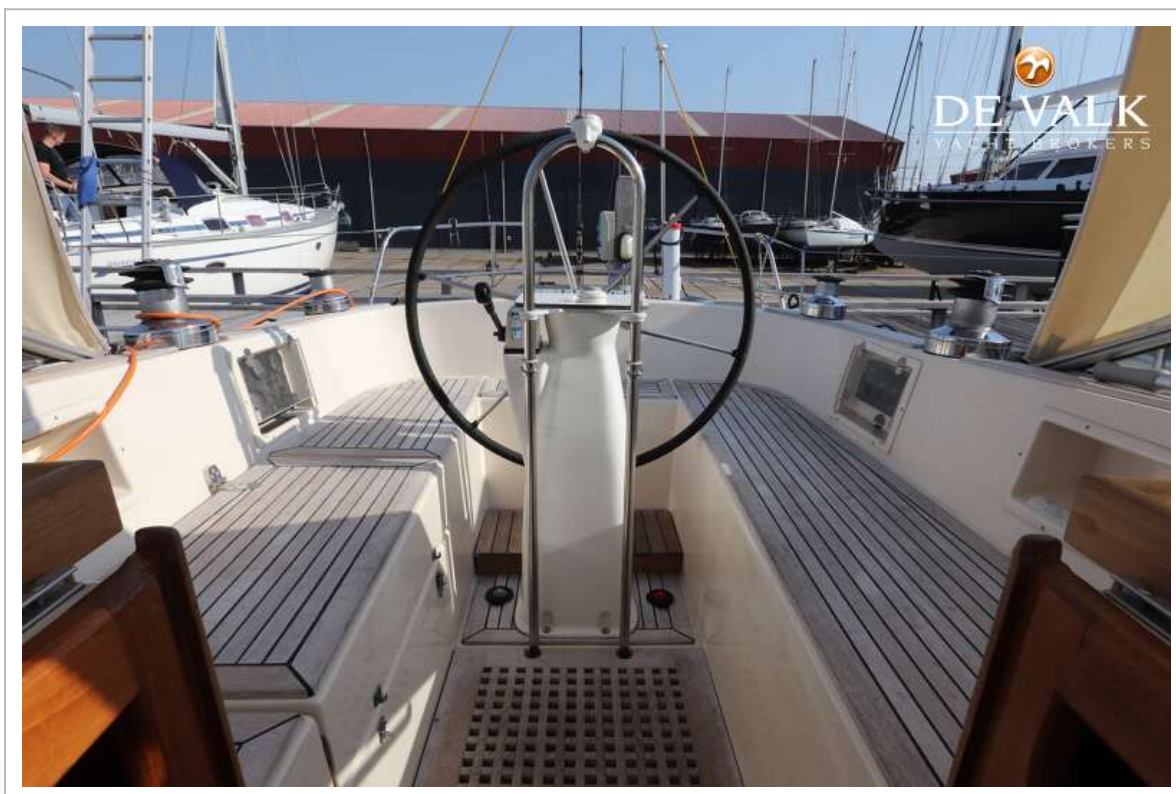
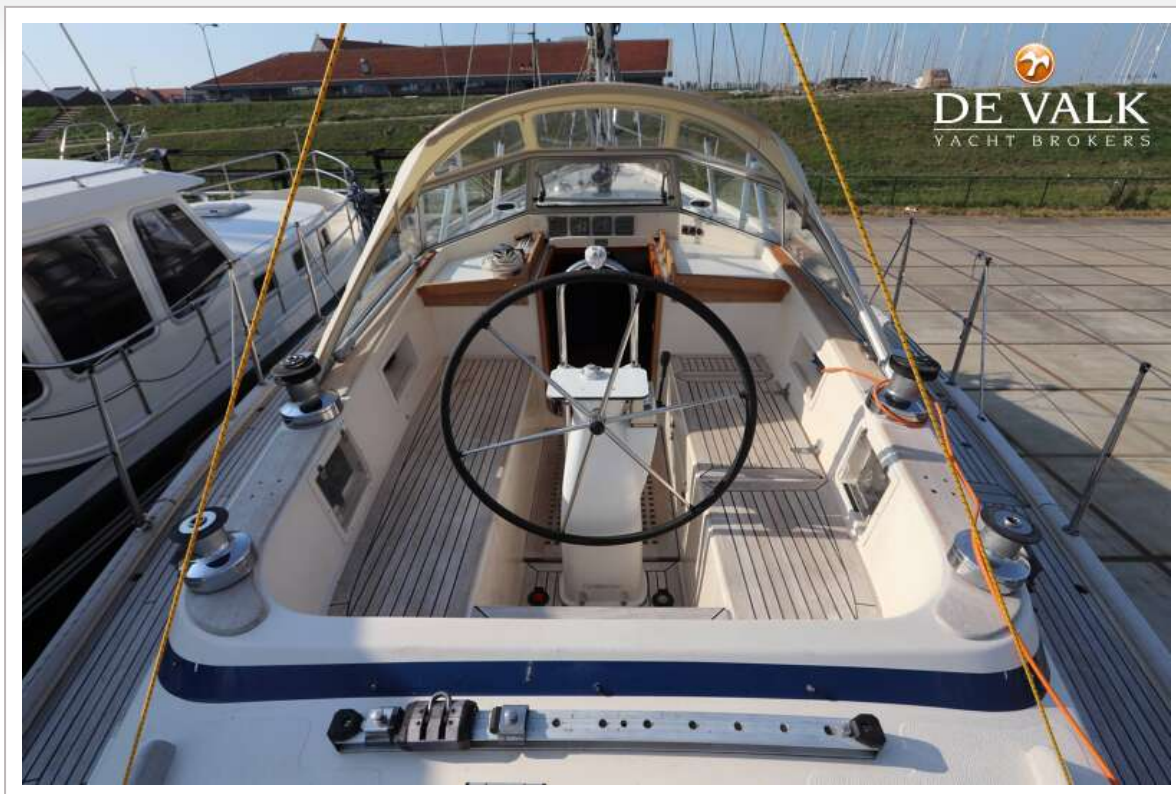
HALLBERG RASSY 36



HALLBERG RASSY 36



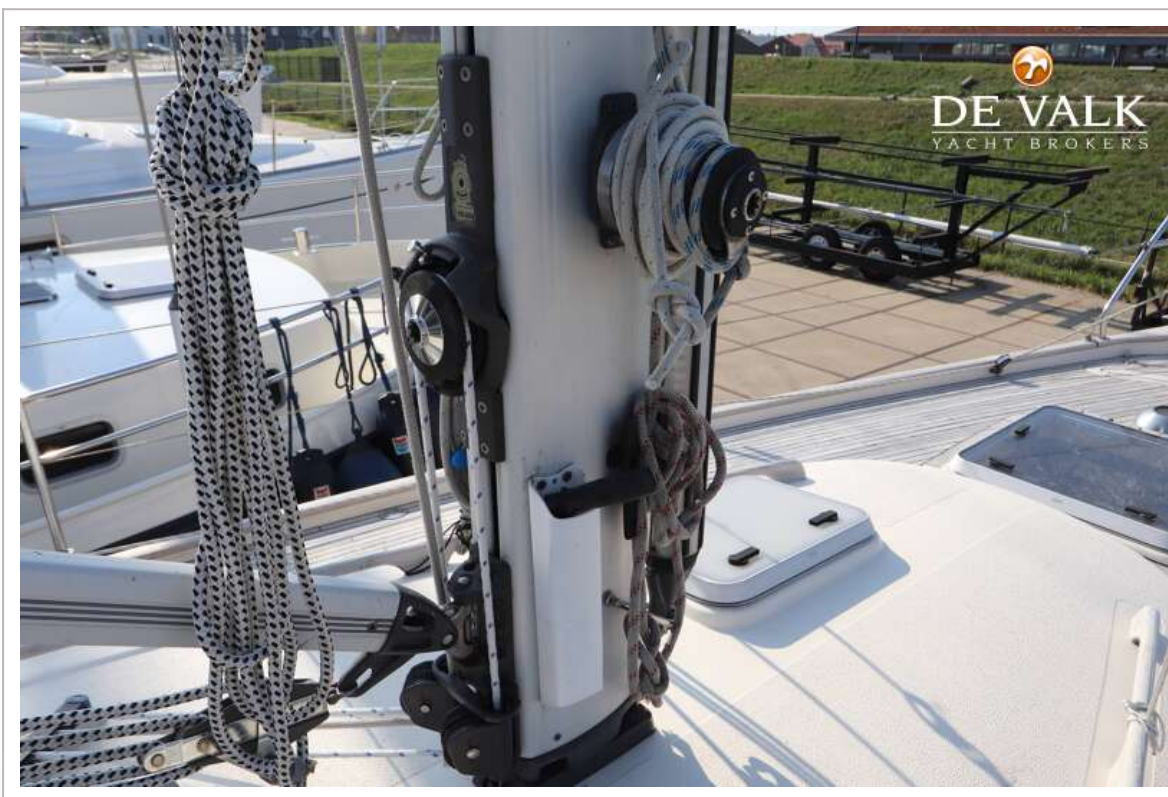
HALLBERG RASSY 36



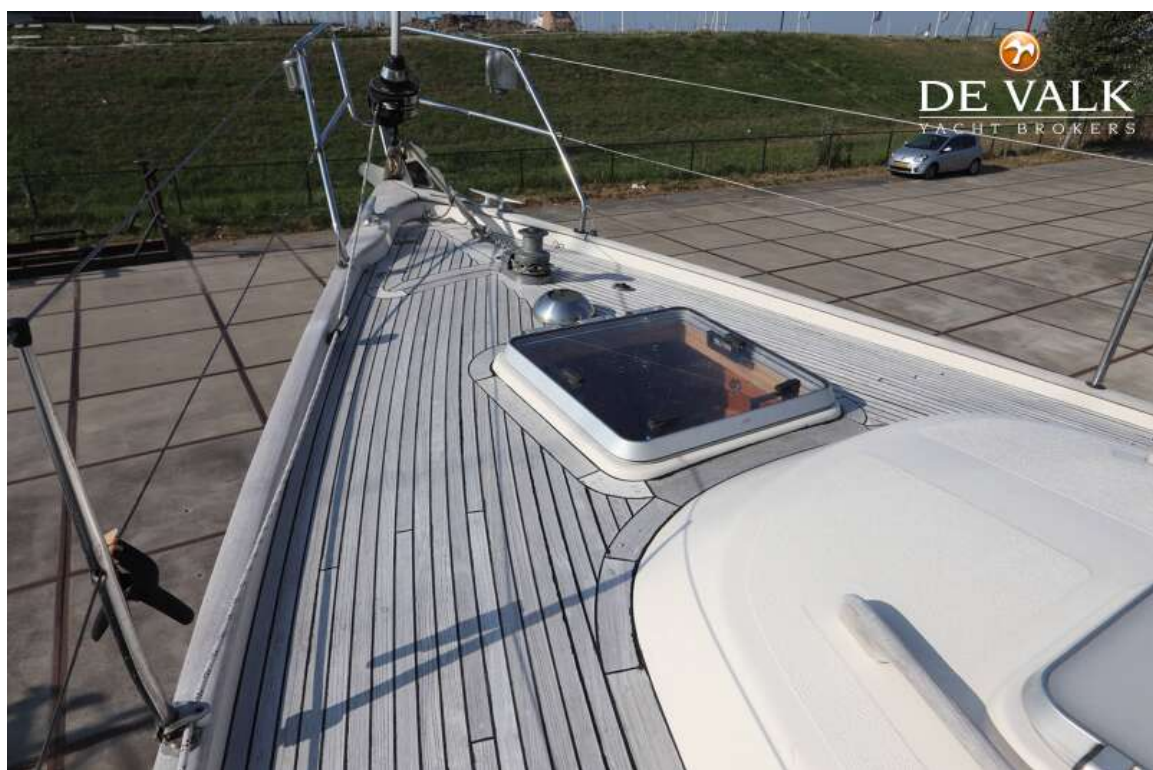
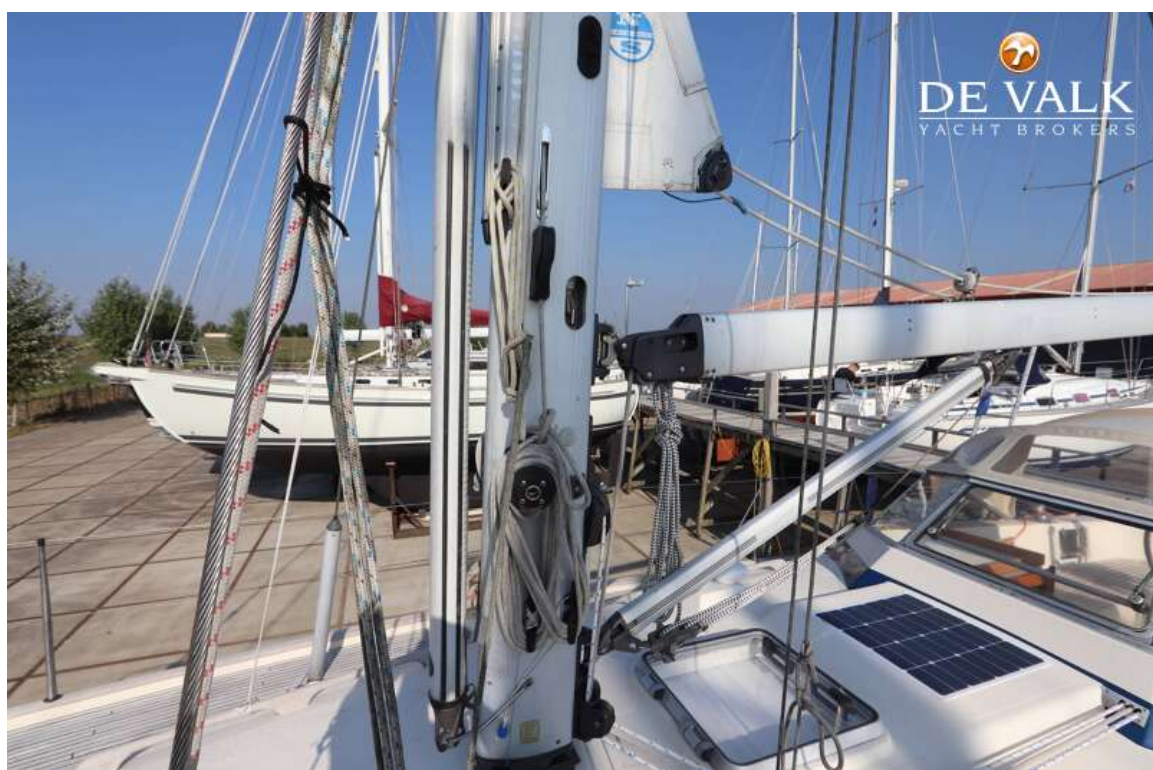
HALLBERG RASSY 36



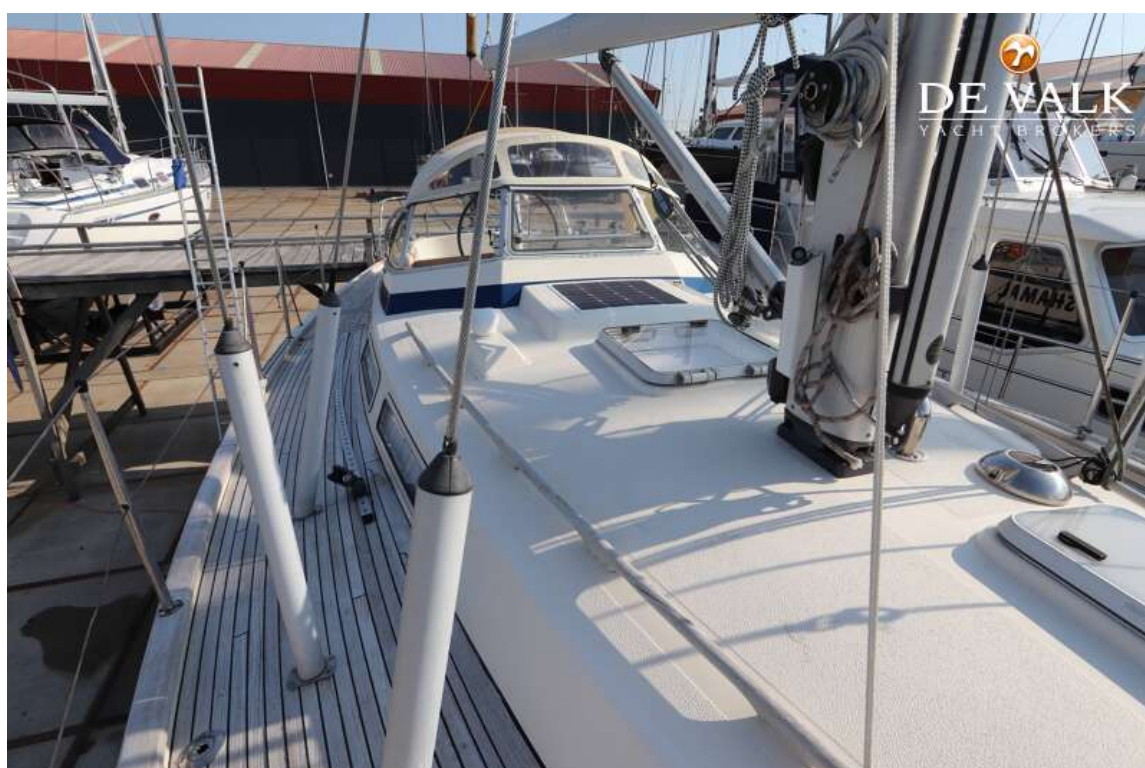
HALLBERG RASSY 36



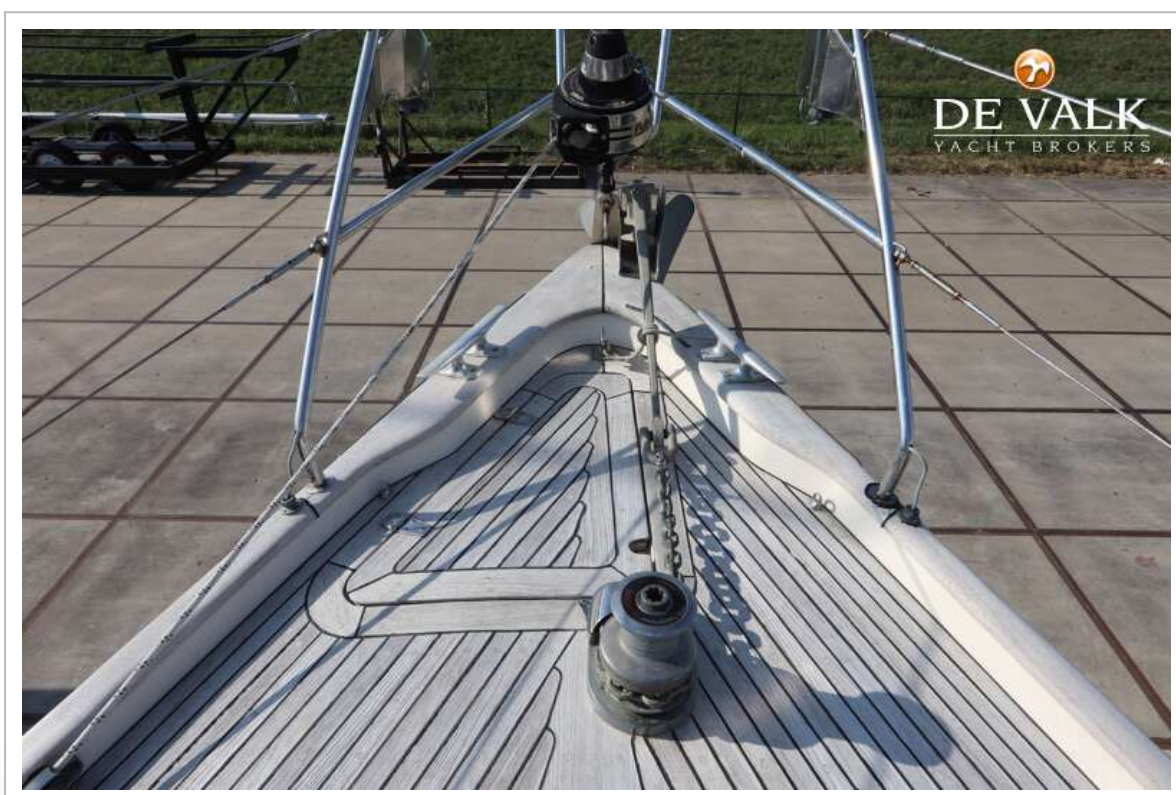
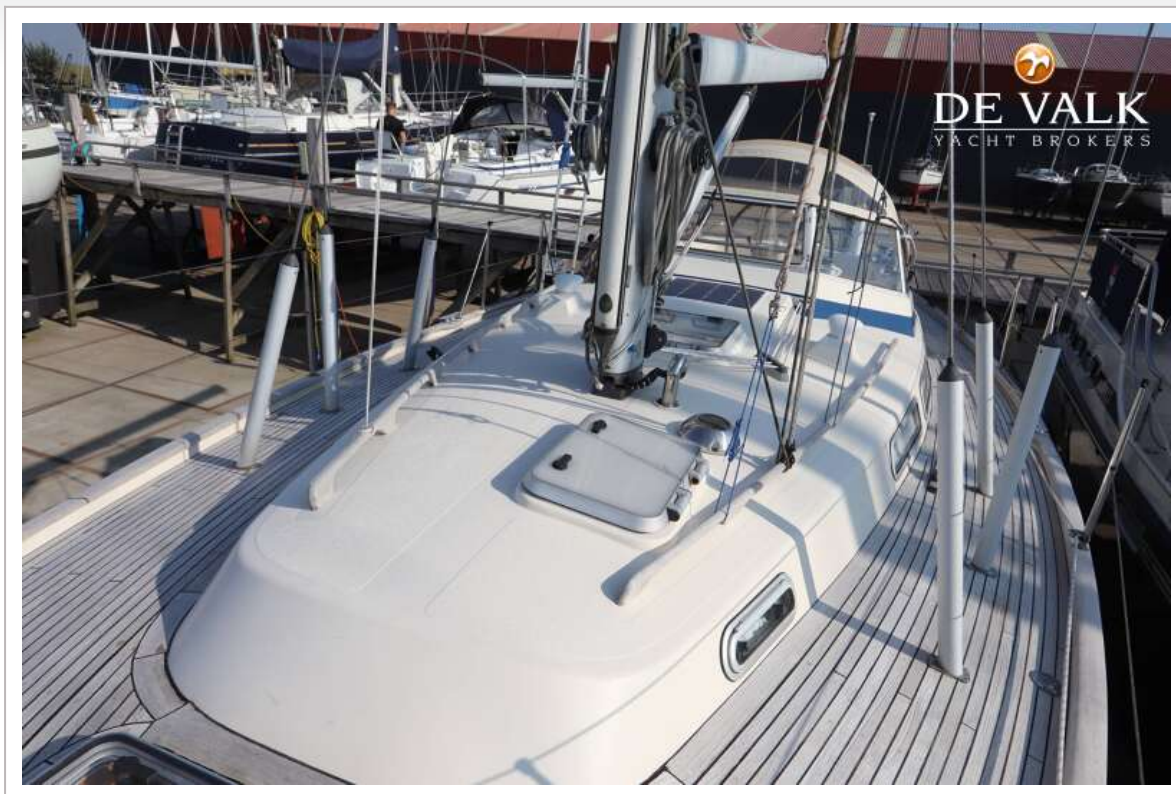
HALLBERG RASSY 36



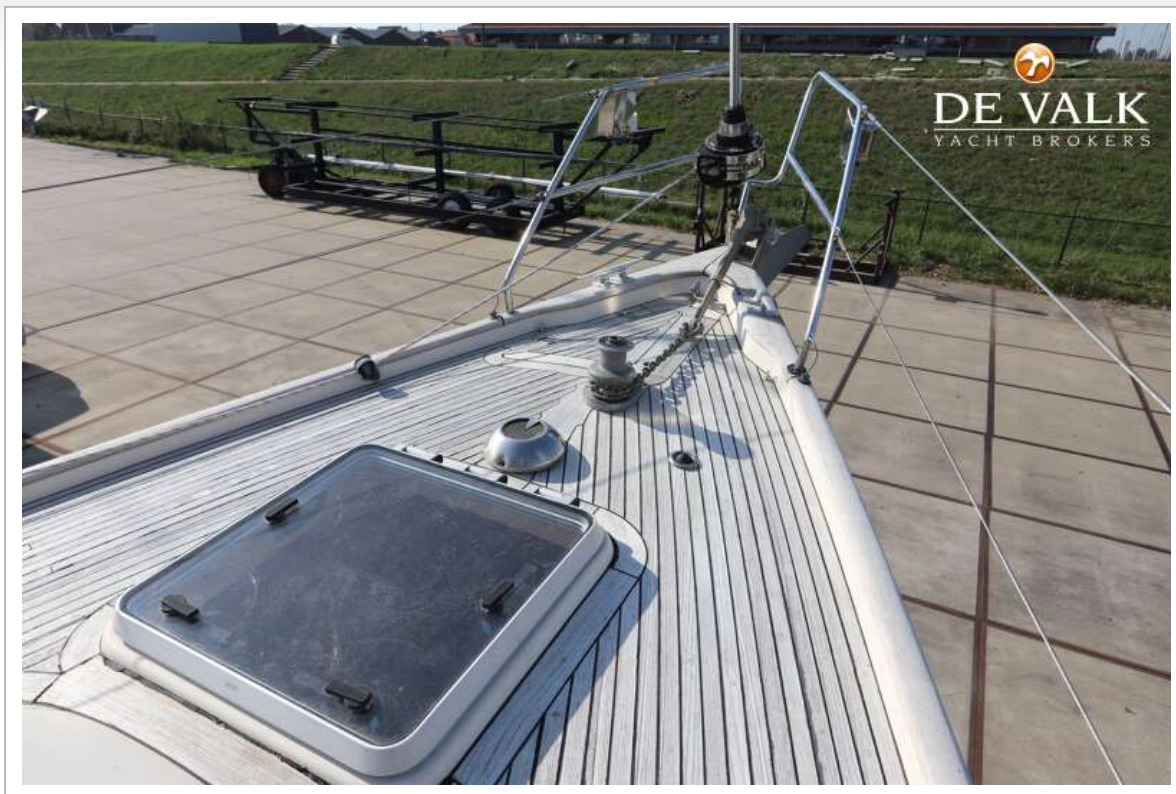
HALLBERG RASSY 36



HALLBERG RASSY 36



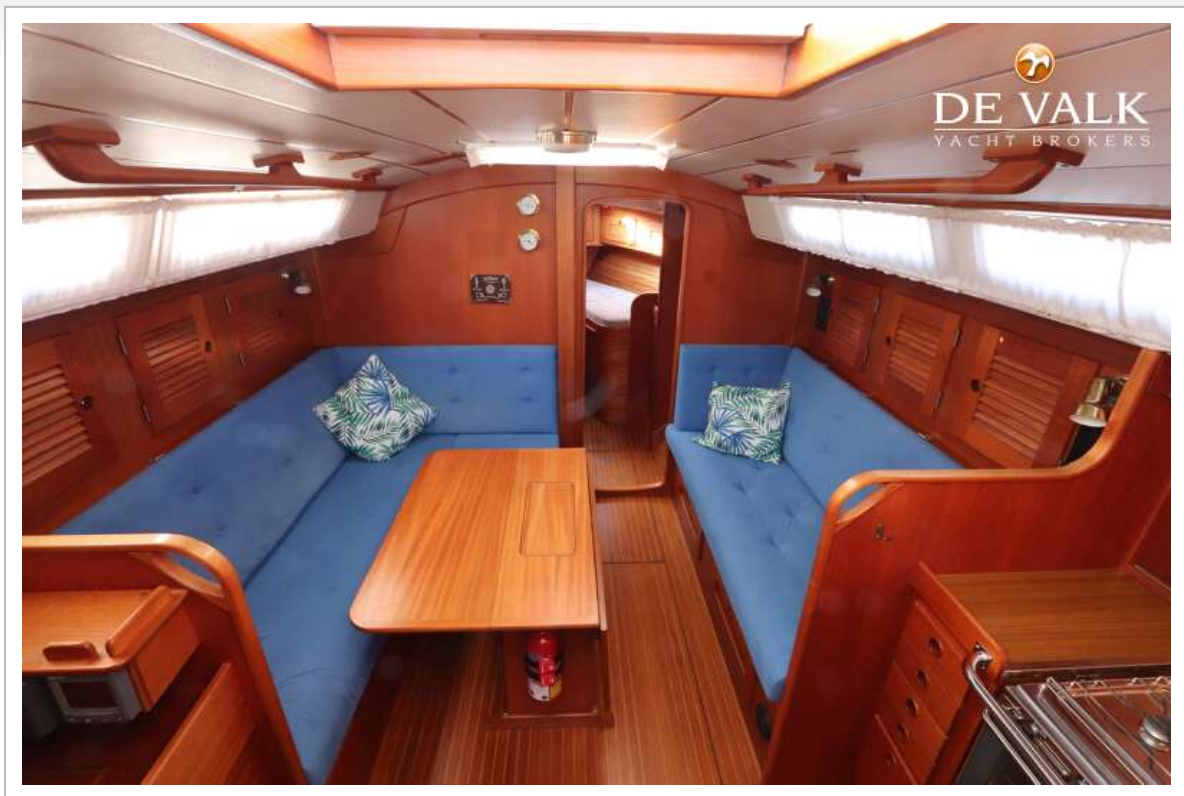
HALLBERG RASSY 36



HALLBERG RASSY 36



HALLBERG RASSY 36



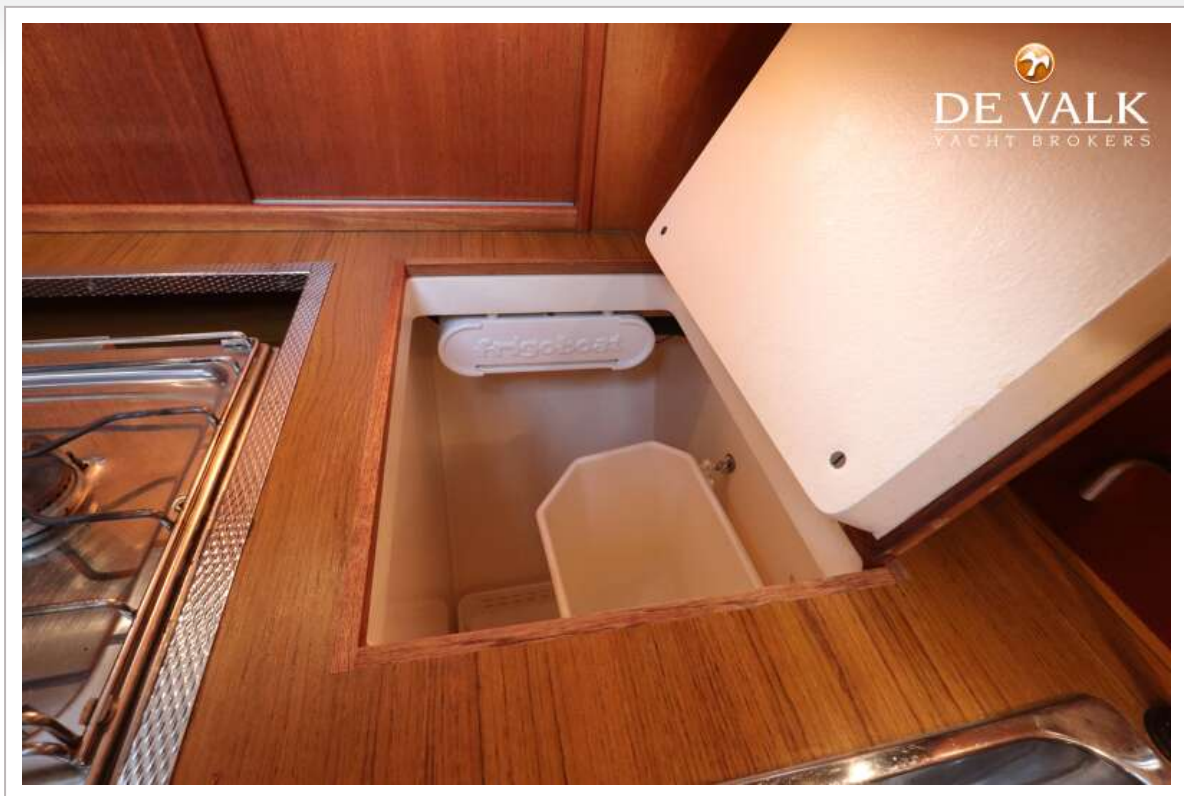
HALLBERG RASSY 36



HALLBERG RASSY 36



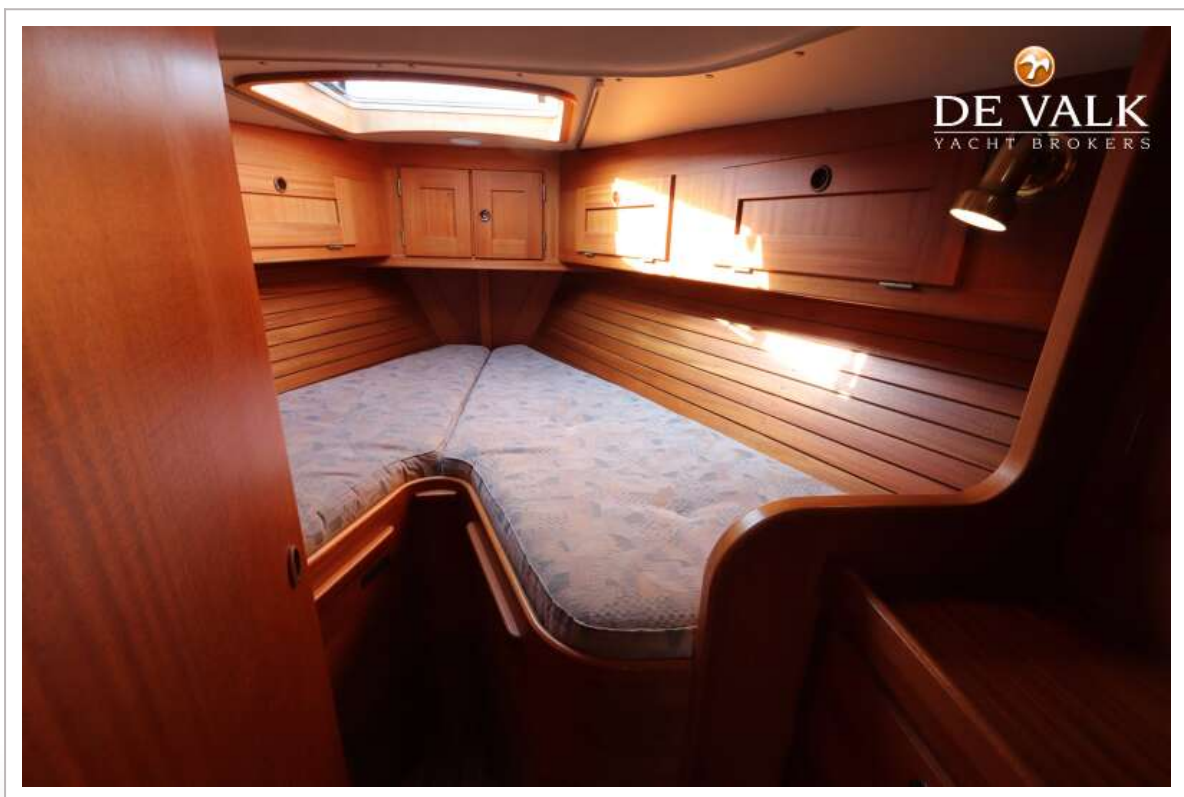
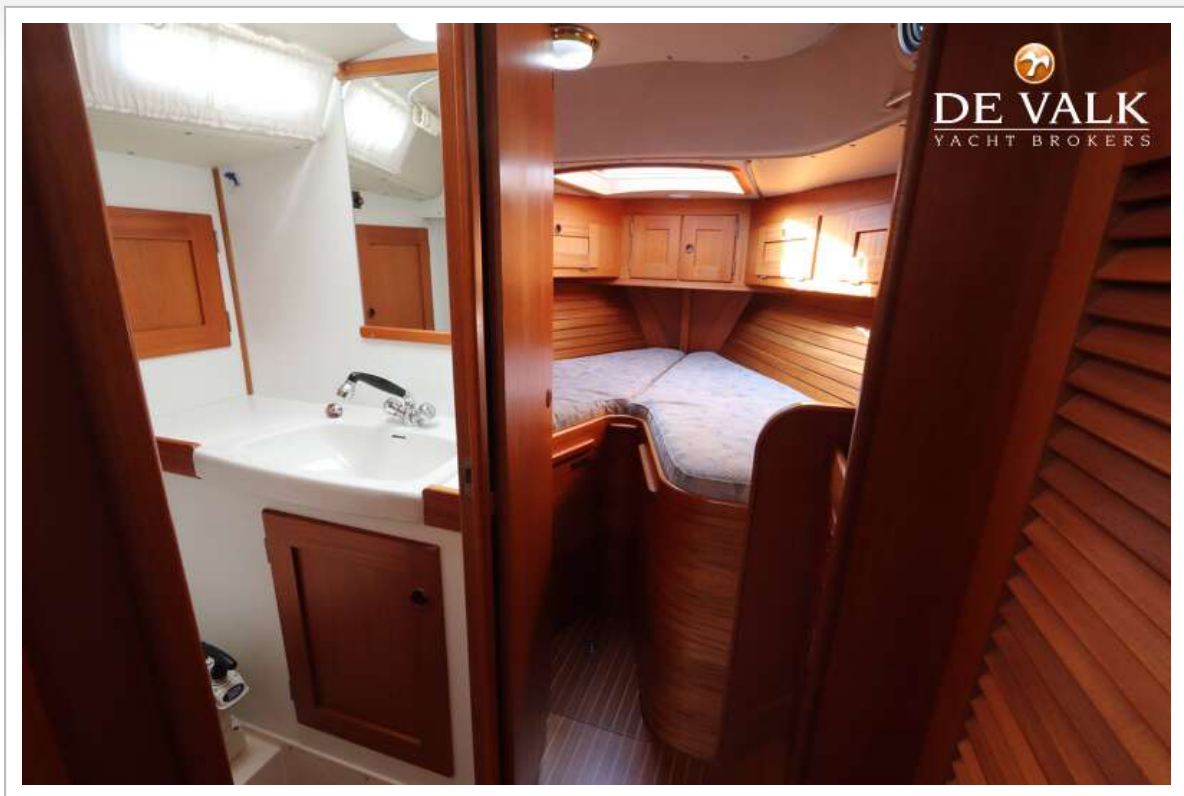
HALLBERG RASSY 36



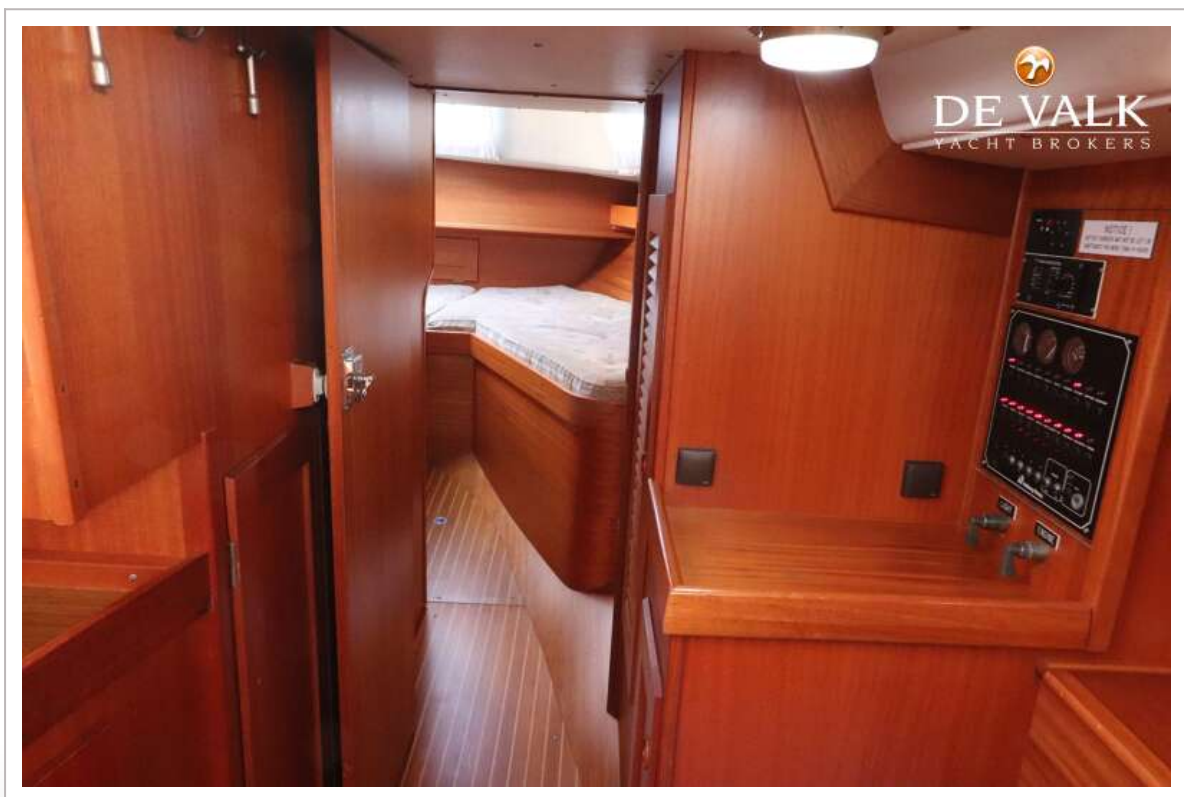
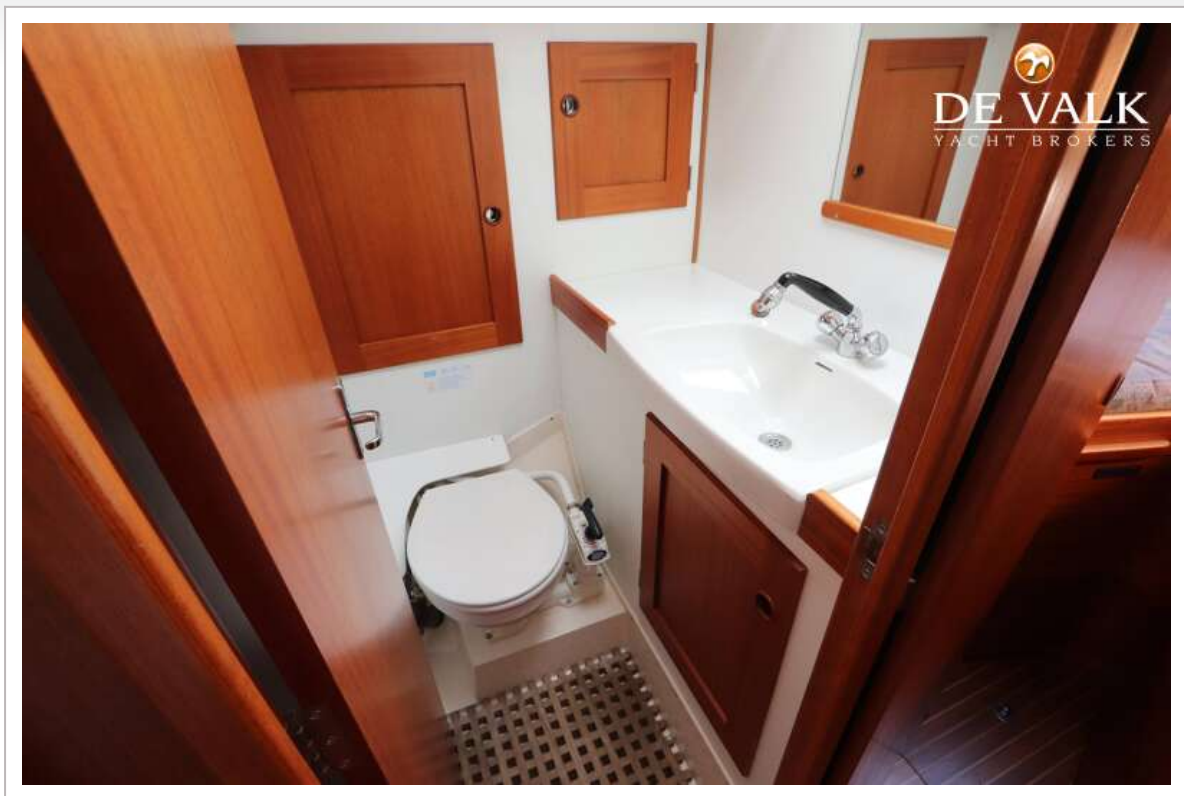
HALLBERG RASSY 36



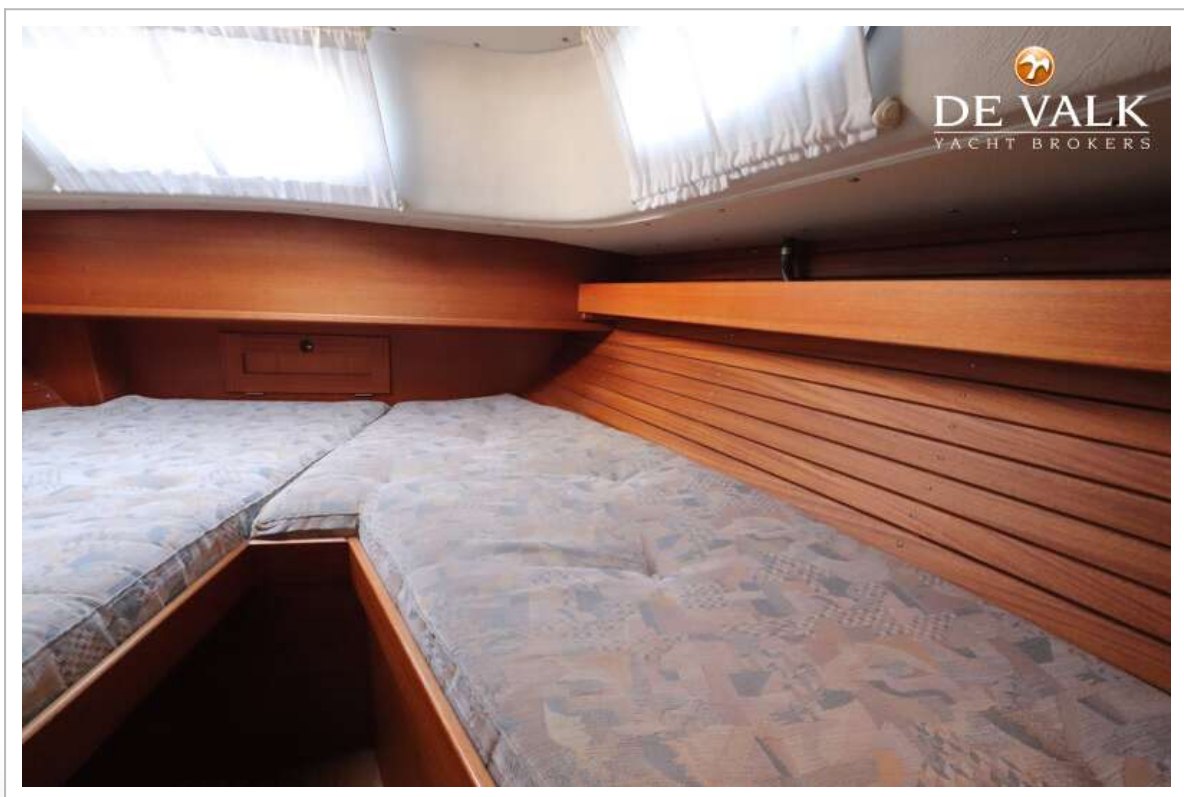
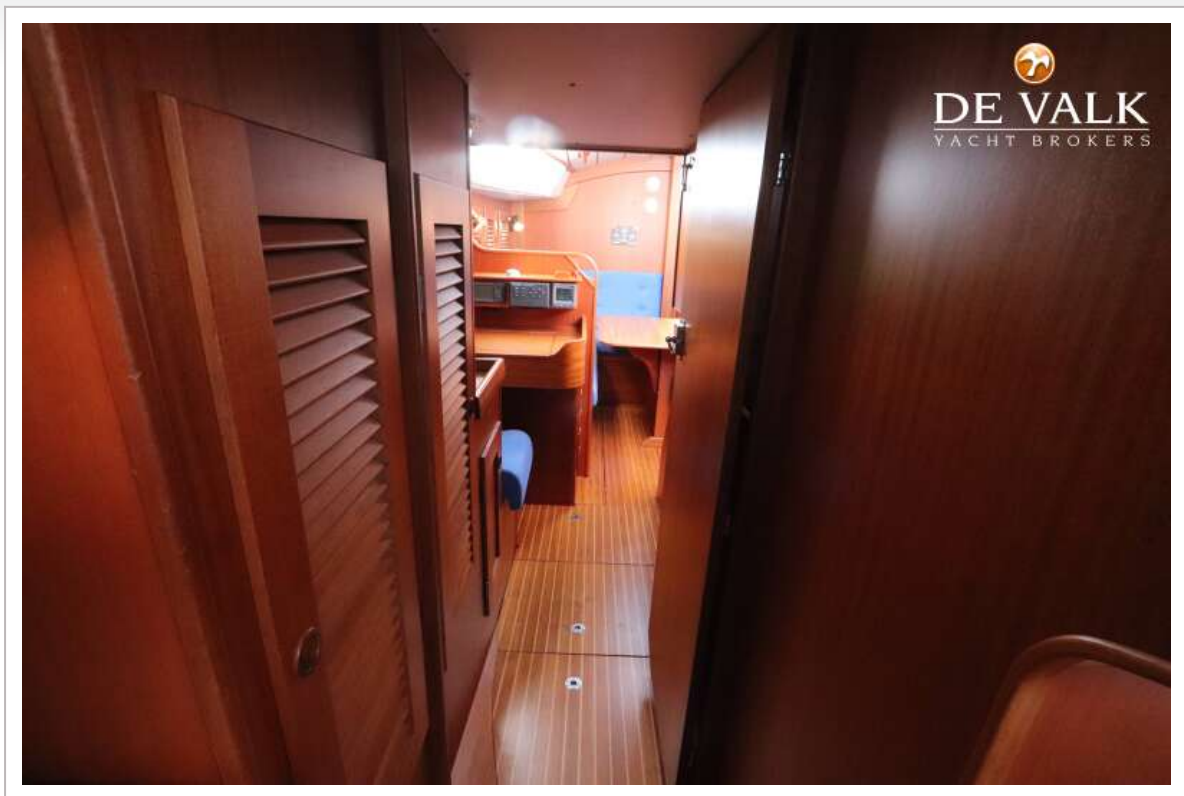
HALLBERG RASSY 36



HALLBERG RASSY 36



HALLBERG RASSY 36



HALLBERG RASSY 36



HALLBERG RASSY 36

