



DE VALK
YACHT BROKERS



PRESIDENT 57



DE VALK
YACHT BROKERS

BROKERAGE | CHARTER | BERTHS | FINANCE | INSURANCE | YACHT MANAGEMENT

BROKER'S COMMENTS

Spacious, ideal "live aboard" boat. Survey available from 2003, 2006 and 2010. Exceptional aft cabin!

Paul Galle

SPECIFICATIONS

Dimensions	17.35 x 5.45 x 1.20 (m)	Builder	President Yachts
Built	1988	Cabins	3
Material	GRP	Berths	8
Engine(s)	2 x GM Detroit V8 92 Diesel	Hp/Kw	2 x 750.00 (hp), 551.25 (kw)
Asking price	sold (VAT)	Lying	Spain

CONTACT

Sales office	De Valk Palma	Telephone	+34 971 40 29 11
Address	Port. Cala Nova, Avda. Joan Miro, 327 07015 Palma de Mallorca ES	E-mail	palma@devalk.nl

DISCLAIMER

These particulars are given in good faith as supplied but cannot be guaranteed.



PRESIDENT 57

GENERAL

Model	PRESIDENT 57
Type	motor yacht
LOA (m)	17,35
Beam (m)	5,45
Draft (m)	1,20
Headroom (m)	1,90
Year built	1988
Builder	President Yachts
Displacement (t)	32
Hull material	GRP
Hull colour	white
Hull shape	V-Bottom
Superstructure material	GRP
Deck finish	teak Aft deck and flybridge
Window frame	aluminum
Fuel tank (litre)	steel 3200 (705 Imp gallons)
Freshwater tank (litre)	1100 (242 Imp gallons)
Blackwater tank (litre)	400 (88 Imp gallons)
Wheel steering	hydraulic
Flybridge helm position	yes
Extra info	Yacht is commissioned in 1989. Complete osmosis treatment on hull in 2010. LOA: 56'9 Beam: 17'9 Draft: 3'9

ACCOMMODATION

Cabins	3
Berths	8
Interior	teak Classic
Floor	New wood floor to saloon
Saloon	With fridge
Headroom saloon (m)	1.90/1.95 (6'2/6'4) throughout



Heating	Marine Air Systems
Air-conditioning	Marine Air Systems
Dinette	4/5 persons
Dinette to convert into berth	yes
Galley	yes
Cooker	ceramic Siemens 4-plate electric
Oven	Siemens electric
Extractor	yes
Microwave	Husqvarna Micronette
Fridge	Electrolux
Freezer	Electrolux
Hot water system	220V + engine 100 litres (22 Imp gallons)
Water pressure system	electrical
Dishwasher	Bosch
Owners cabin	double bed Aft cabin
Bathroom	en suite
Toilet	en suite
Toilet system	electric
Wash basin	in the bathroom
Shower	en suite
Guest cabin 1	v-bed Forward
Bathroom	shared
Toilet	shared
Toilet system	electric
Wash basin	in the bathroom
Shower	shared
Guest cabin 2	twin single
Washing machine	Kenny Duo
Dryer	Kenny Duo

MACHINERY



No of engines	2
Make	GM Detroit
Type	V8 92
HP	750,00
kW	551,25
Fuel	diesel
Year installed	1988
Maximum speed (kn)	20
Engine hours	1166
Engine cooling system	Two circuit
Drive	shaft
Bowthruster	electric
Sternthruster	electric
Propeller shaft material	stainless steel
Manual bilge pump	1x
Electric bilge pump	5x
Generator	Westerbeke 20 kW
Battery charger	3x Mastervolt Mass (24v/25ah, 12v/60ah, 12v/60ah) and 1x Philippi battery charger
Shorepower	yes
Extra info	Engine: 2300 rpm turbo diesel Alternator on starboard engine Racor fuel filters

NAVIGATION

Compass	Danforth
Electric compass	Autohelm
Depth sounder	Autohelm Tridata
Log	Autohelm Tridata
Windset	Autohelm
VHF	De beg 6330
Autopilot	Raymarine smartautopilot, installed 2006
Radar	Simrad Anritsu



Plotter	Simrad 3P34 chart plotter fly+helm and two Simrad chart plotters (new 2003)
Searchlight	yes
Extra info	Folding radar bar Intercom with 5 stations

EQUIPMENT

Bimini	On flybridge
Winter cover	To enclose aft deck
Cockpit cushions	yes
Bathing platform	with teak grating
Gangway	Hydraulic (new 2003)
Anchor	Bow
Windlass	Maxwell Nilsson
Capstan	Maxwell Nilsson (electric)
Deck wash	yes
Deck crane	electric On flybridge
Sea railing	stainless steel
Pulpit	yes
Life raft	Walker bay 2.9 and 7hp mariner
Life raft (pers)	8
Wiper	3x
Horn	Foghorn
Fenders	yes
TV	Digital
Radio-cd player	Sylva v10 (2007) + 3x stereo radio/cassettes
DVD player	yes
Clock - barometer	yes
Fire extinguisher	yes
Auto extinguisher system	BSCO, installed 2006
Extra info	Fixed hardtop on aft deck enclosed aft deck wetbar on flybridge including fridge inside stair going to flybridge outside ladder going to flybridge





PRESIDENT 57





PRESIDENT 57



PRESIDENT 57



PRESIDENT 57

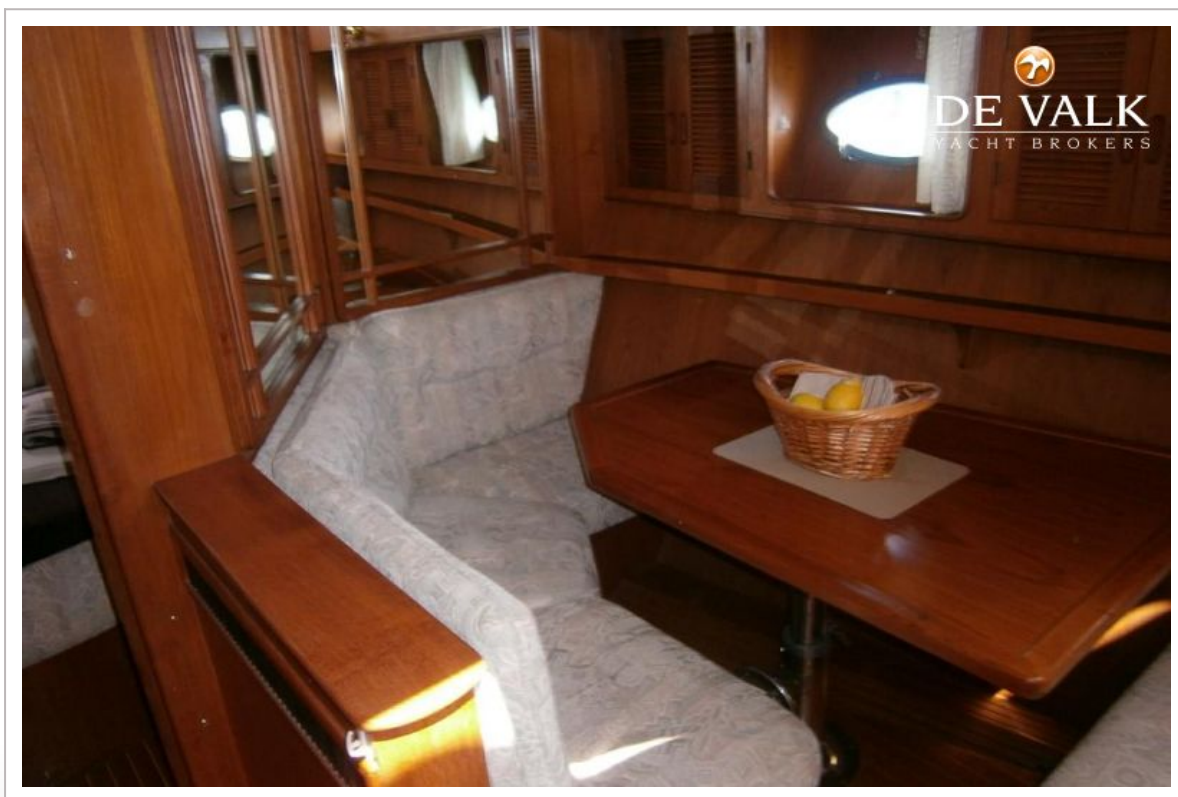


PRESIDENT 57



PRESIDENT 57



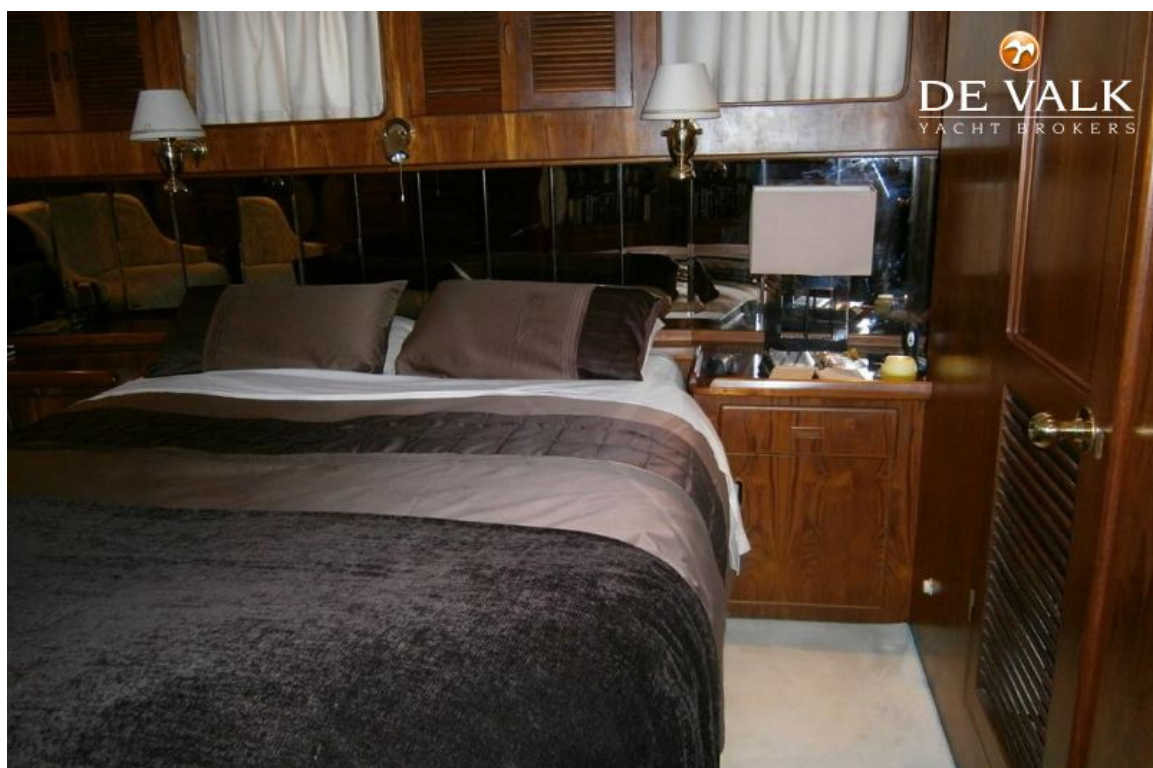


PRESIDENT 57



PRESIDENT 57





PRESIDENT 57

