



DE VALK
YACHT BROKERS



BRISTOL CHANNEL PILOT CUTTER



DE VALK
YACHT BROKERS

BRISTOL CHANNEL PILOT CUTTER

BROKER'S COMMENTS

Alexander T. is an extraordinary marriage of yesterday's traditional sailing ideals with the best of today's technology and design. Built and maintained to MCA Category Zero. She has been meticulously kept in top condition.. She is ready to go sailing and is being offered at an extremely realistic price, indicating her owner's keenness to pass her on to next adventure.

Hans Visser

SPECIFICATIONS

Dimensions	15.64 x 4.27 x 2.38 (m)	Builder	
Built	1998	Cabins	2
Material	Wood Epoxy	Berths	6
Engine(s)	1 x Yanmar 4JH2 DTE diesel	Hp/Kw	88.00 (hp), 64.00 (kw)
Asking price	sold (VAT)	Lying	elsewhere / Not at sales office

CONTACT

Sales office	De Valk Amsterdam B.V.	Telephone	+31 (0)35 5829014
Address	Marinaweg 8 (postal address) 1361 AC Almere NL	E-mail	amsterdam@devalk.nl

DISCLAIMER

These particulars are given in good faith as supplied but cannot be guaranteed.



BRISTOL CHANNEL PILOT CUTTER

GENERAL

Model	BRISTOL CHANNEL PILOT CUTTER
Type	sailing yacht
LOA (m)	15,64
Beam (m)	4,27
Draft (m)	2,38
Year built	1998
Designer	Nigel Irens & Ed Burnett
Displacement (t)	32,2
CE norm	A
Hull material	wood epoxy
Hull colour	blue
Hull shape	S-bilged
Superstructure material	teak
Rubbing strake	
Deck material	wood epoxy
Deck finish	teak
Cockpit deck finish	teak
Dorades	yes
Deckhatch	yes
Portholes	
Fuel tank (litre)	stainless steel 350
Fuel tank 2 (litre)	stainless steel 350
Level indicator (fuel tank)	yes
Freshwater tank (litre)	Total 1050 L. 650 & 400 hull integrated
Blackwater tank (litre)	stainless steel 150
Wheel steering	
Emergency tiller	yes
Extra info	LOD is 15,64, LOA is 20 Meters
Extra info	Lamp oil tank of 40 liter
Extra info	Most my account pictures are older Brochure pictures recent



BRISTOL CHANNEL PILOT CUTTER

ACCOMMODATION

Cabins	2
Berths	6
Interior	
Layout	Private
Floor	parquet
Saloon	yes
Heating	stove diesel Dickenson arctic
Chart table	yes
Aft Cabin	yes
Dinette to convert into berth	yes
Galley	yes
Cooker	
Oven	yes
Extractor	yes
Gas alarm	yes
Fridge	yes
Freezer	yes
Hot water system	
Water pressure system	
Manual and/or foot pump	yes
Owners cabin	
Wardrobe	drawers
Bathroom	
Toilet	
Shower	
Guest cabin 1	
Wardrobe	drawers
Bathroom	
Toilet	
Shower	



BRISTOL CHANNEL PILOT CUTTER

Guest cabin 2

Wardrobe

drawers

Extra info

Some cosmetic work on the fwd head.

MACHINERY

No of engines

1

Make

Yanmar

Type

4JH2 DTE

HP

88

kW

64,00

Fuel

diesel

Year installed

1998

Maximum speed (kn)

9,00

Cruising speed (kn)

8,00

Drive

shaft

Engine controls

Propeller type

fixed

Manual bilge pump

yes

Electric bilge pump

yes

Start battery

yes

Service battery

yes

Battery charger

yes

Shorepower

NAVIGATION

Compass

yes

Depth sounder

yes

Log

yes

VHF

yes

Autopilot

yes

Rudder angle indicator

yes



BRISTOL CHANNEL PILOT CUTTER

GPS	yes
Navigation lights	yes

EQUIPMENT

Cockpit cover	yes
Sun awning	Mast to stern (unused) and for cockpit
Winter cover	For the full boat (unused)
Anchor	
Other ground tackle	Storm anchor (float)
Windlass	
Dinghy	rigid hull Ellie May 10,5 ft clinker built sailing dinghy & Bombard 2.8 M
Outboard	Yamaha 2.5 HP four stroke outboard (2008)
Sea railing	
Pushpit	yes
Pulpit	yes
Life raft	
Life raft (pers)	container 8
Lifejackets	8
Danbuoy	yes
Rope cutter	yes
Fenders	yes
Mooring lines	yes
Spare parts	Many
Tools	Several
Speakers in salon	yes
Fire extinguisher	yes
Extinguisher in engine room	yes
Auto extinguisher system	yes
Extra info	Airdeck inflatable dinghy & cover for dinghy
Extra info	3 folding bikes



BRISTOL CHANNEL PILOT CUTTER

Extra info

Safety equipment needs revision except for the liferaft.

RIGGING

Rigging	cutter
Material mast	wood
Keel stepped mast	yes
Mainsail	789 sq ft in 11.4oz sailcloth. Loose footed, horizontal cut
Mainsail cover	yes
Cutterstay	yes
Main staysail	Dacron
Topsail	216 sq ft in 7.8oz sailcloth, with non-stretch luff
Mizzen	Jackyard 520 sq ft in 5.2oz sailcloth little used
Jib	314 sq ft crosscut in 8.4 oz sailclothwith Wykeham Martin furler
Jib I	Heavy, 158 sq ft in 10.2oz sailcloth, little used
Jib II	295 sq ft in 7.2oz in Haywards 7236 sailcloth
Jib III	Spare jib
Genoa	1,184 sq ft in 3.4oz Challenge sailcloth reaching (little used)
A-symmetric spi	Square sail bonnet, add 6ft to foot of square sail in 7.8oz sail
Booster	Square sail, 568 sq ft in 7.8oz sailcloth, little used
Staysail	338 sq ft in 10.2oz sailcloth
Trysail	230 sq ft in 12oz sailcloth unused
Stormjib	Dacron
Primary sheet winch	yes
Secondary sheet winch	yes
Halyard winches	yes
Reefing winch	yes





BROKERAGE | CHARTER | BERTHS | FINANCE | INSURANCE | YACHT MANAGEMENT



DE VALK
YACHT BROKERS



**This yacht will be auctioned,
for further details please visit www.devalk.nl**

**Dit schip zal worden geveild,
voor meer informatie gaat u naar www.devalk.nl**

**Dieses Schiff wird versteigert,
für weitere informationen besuchen Sie www.devalk.nl**

WWW.DEVALK.NL



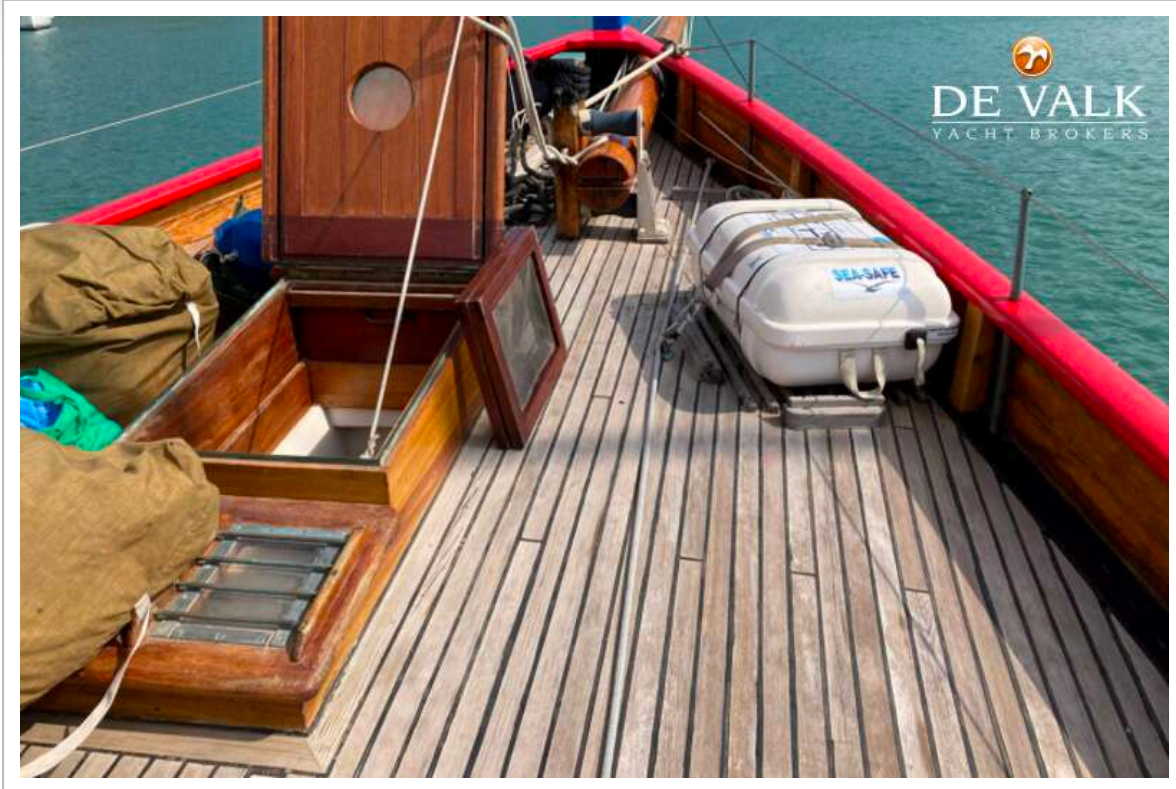
DE VALK
YACHT BROKERS



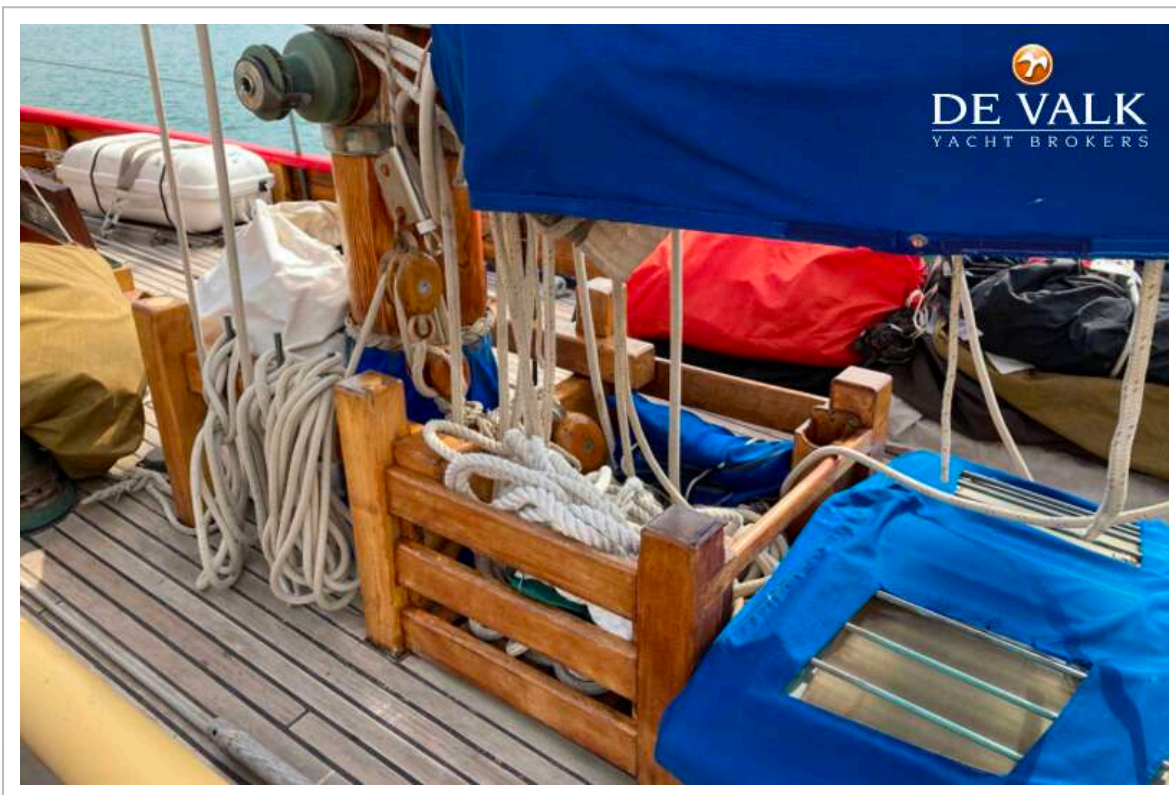
BRISTOL CHANNEL PILOT CUTTER



BRISTOL CHANNEL PILOT CUTTER



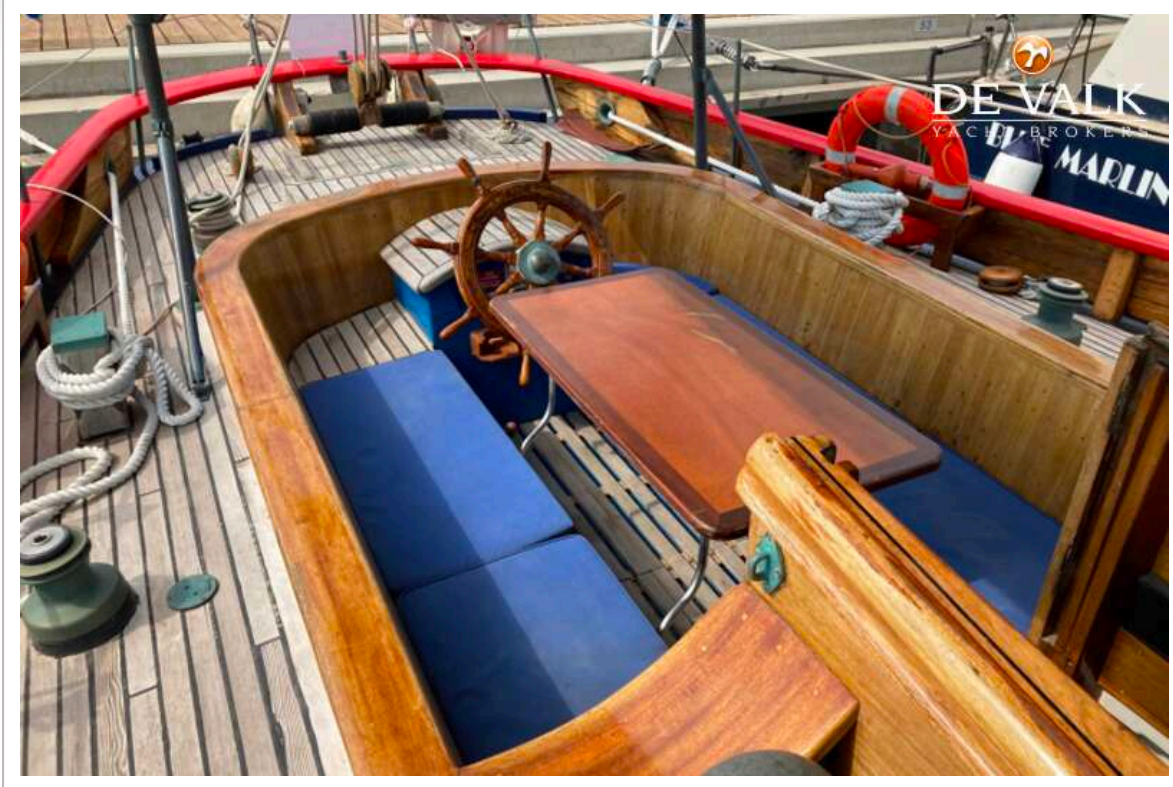
BRISTOL CHANNEL PILOT CUTTER



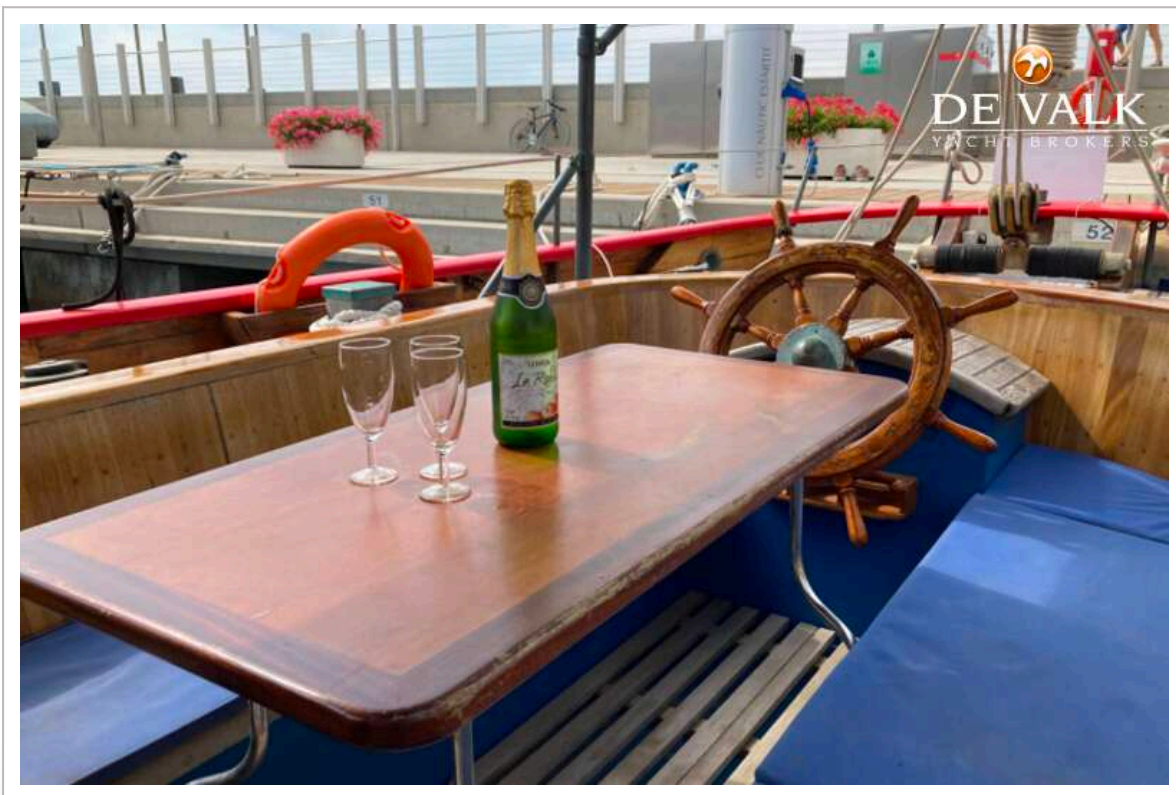
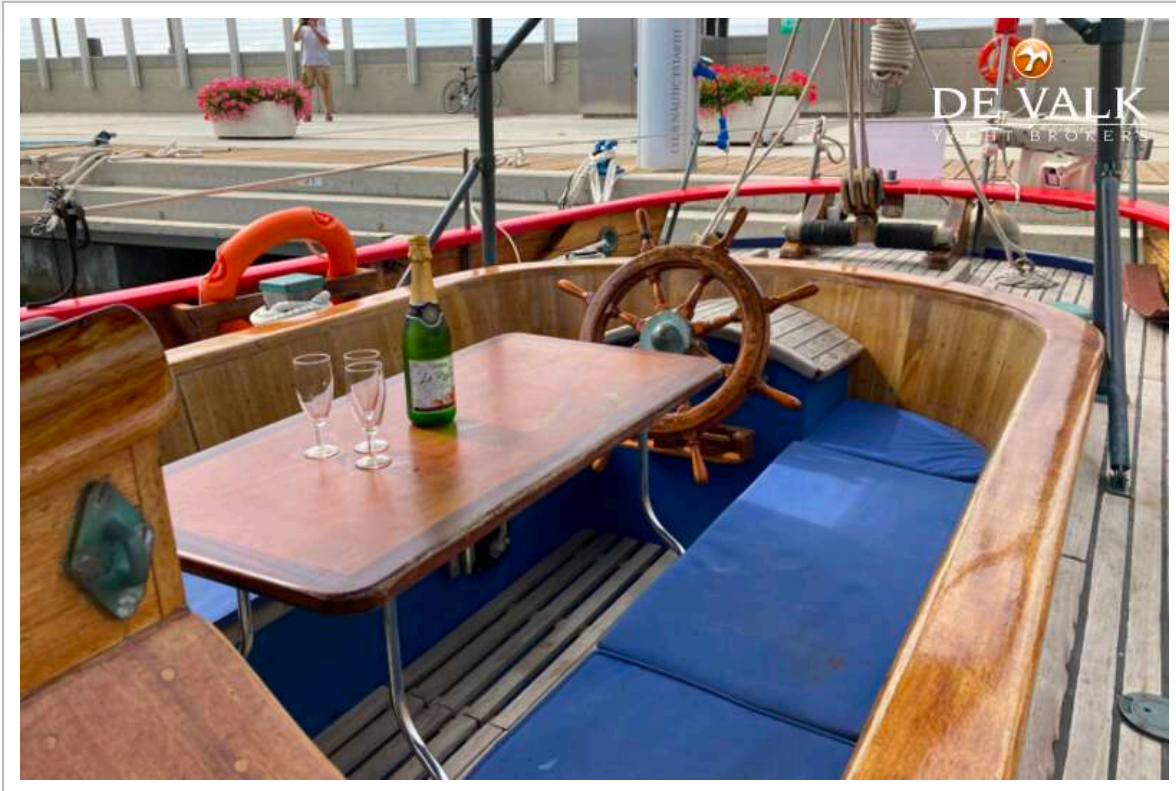
BRISTOL CHANNEL PILOT CUTTER



BRISTOL CHANNEL PILOT CUTTER



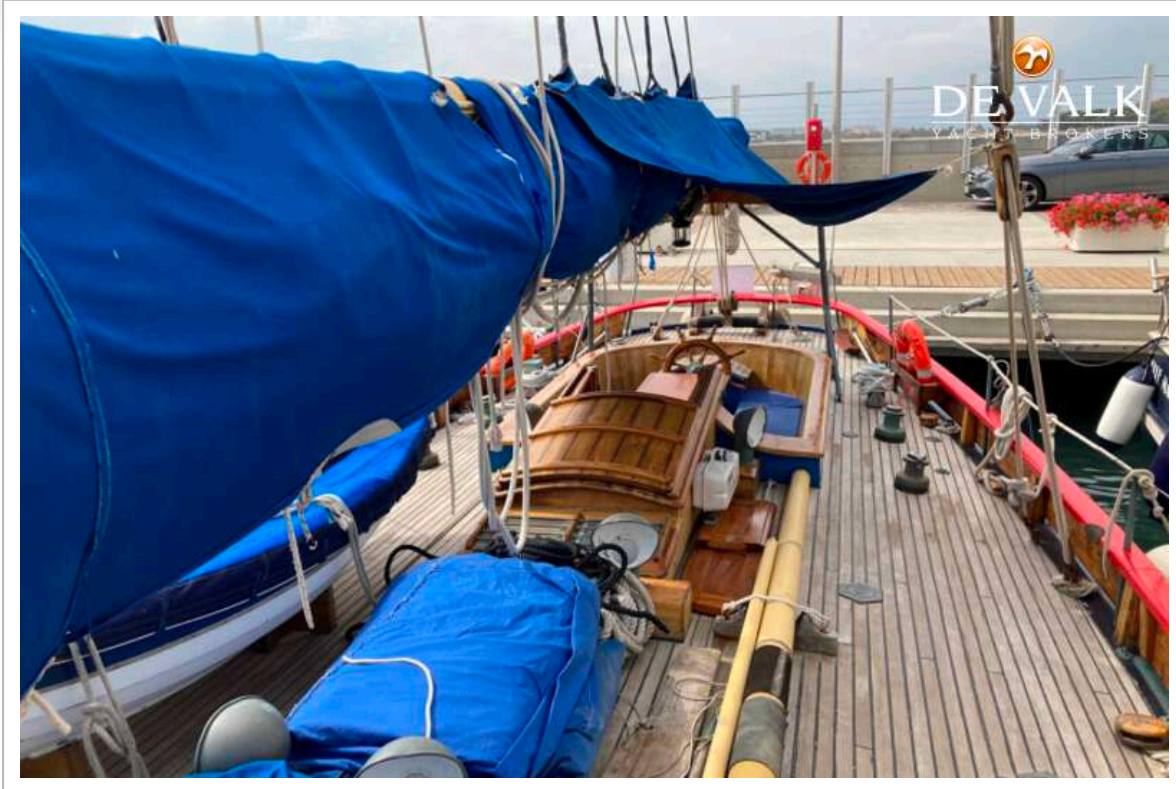
BRISTOL CHANNEL PILOT CUTTER



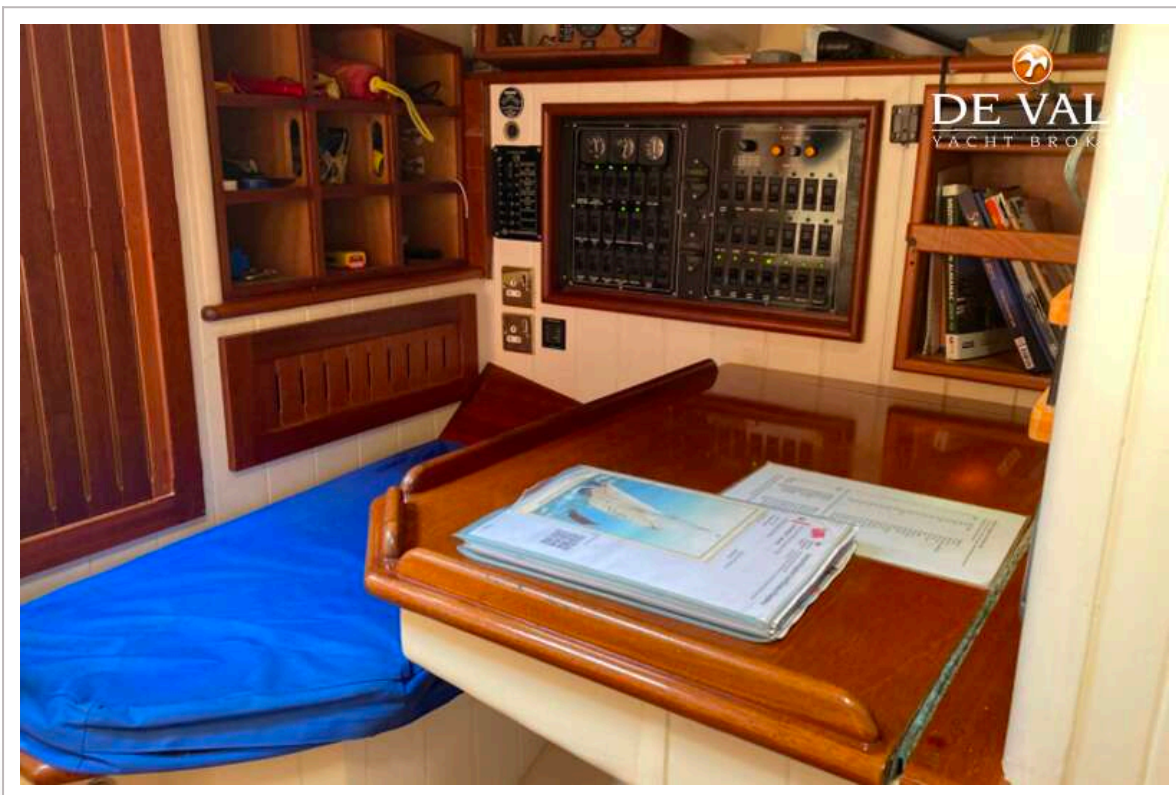
BRISTOL CHANNEL PILOT CUTTER



BRISTOL CHANNEL PILOT CUTTER



BRISTOL CHANNEL PILOT CUTTER



BRISTOL CHANNEL PILOT CUTTER



BROKERAGE | CHARTER | BERTHS | FINANCE | INSURANCE | YACHT MANAGEMENT



**This yacht will be auctioned,
for further details please visit www.devalk.nl**

**Dit schip zal worden geveild,
voor meer informatie gaat u naar www.devalk.nl**

**Dieses Schiff wird versteigert,
für weitere informationen besuchen Sie www.devalk.nl**

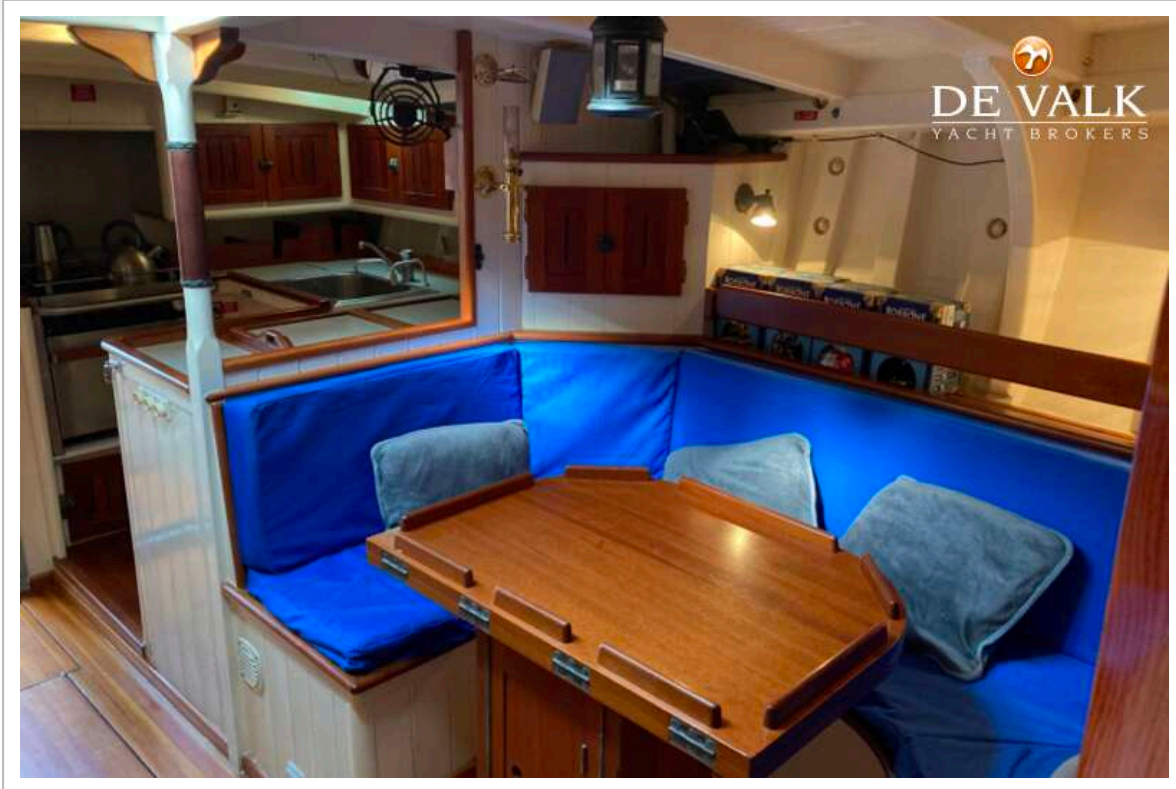
WWW.DEVALK.NL



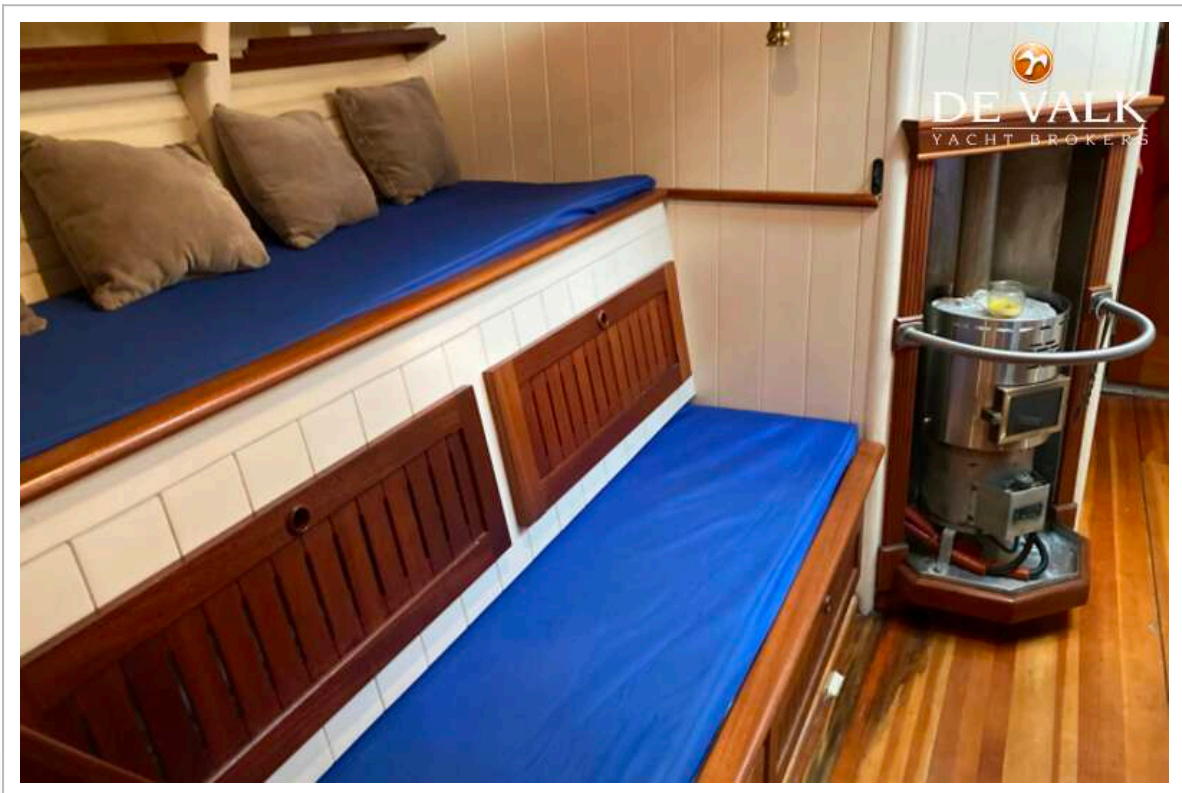
BRISTOL CHANNEL PILOT CUTTER



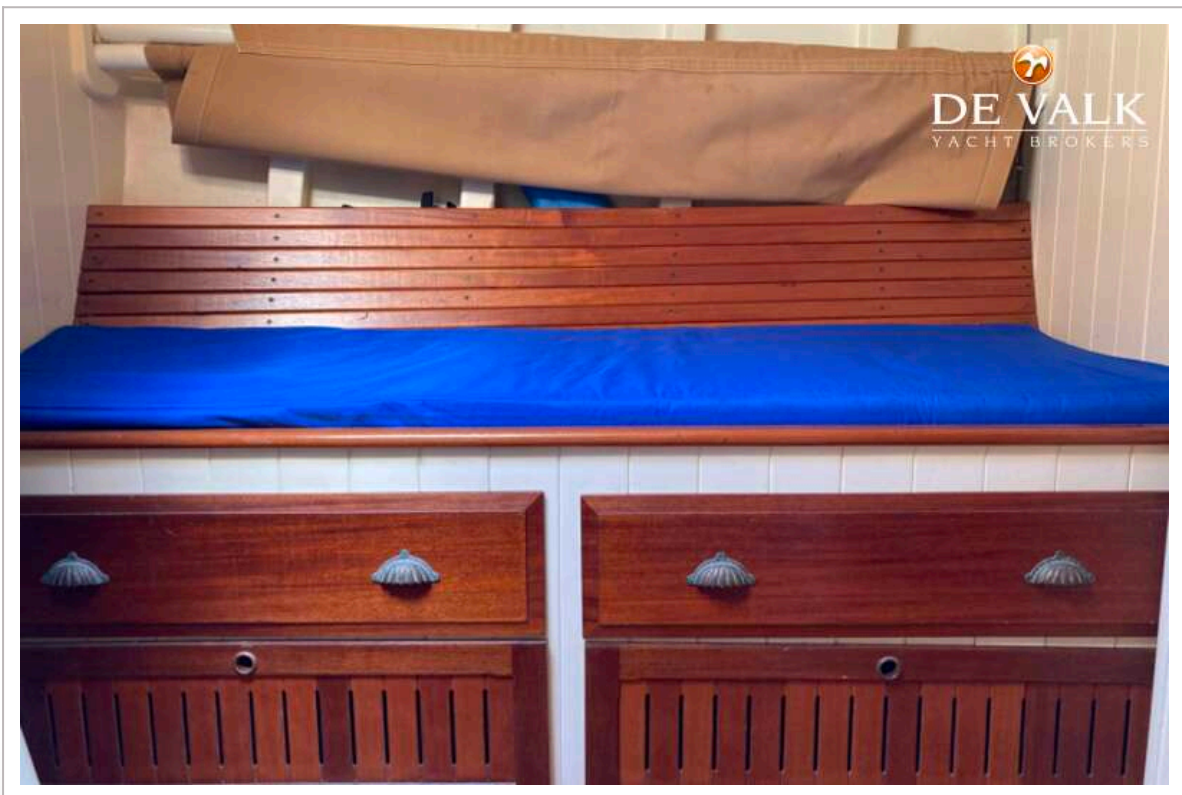
BRISTOL CHANNEL PILOT CUTTER



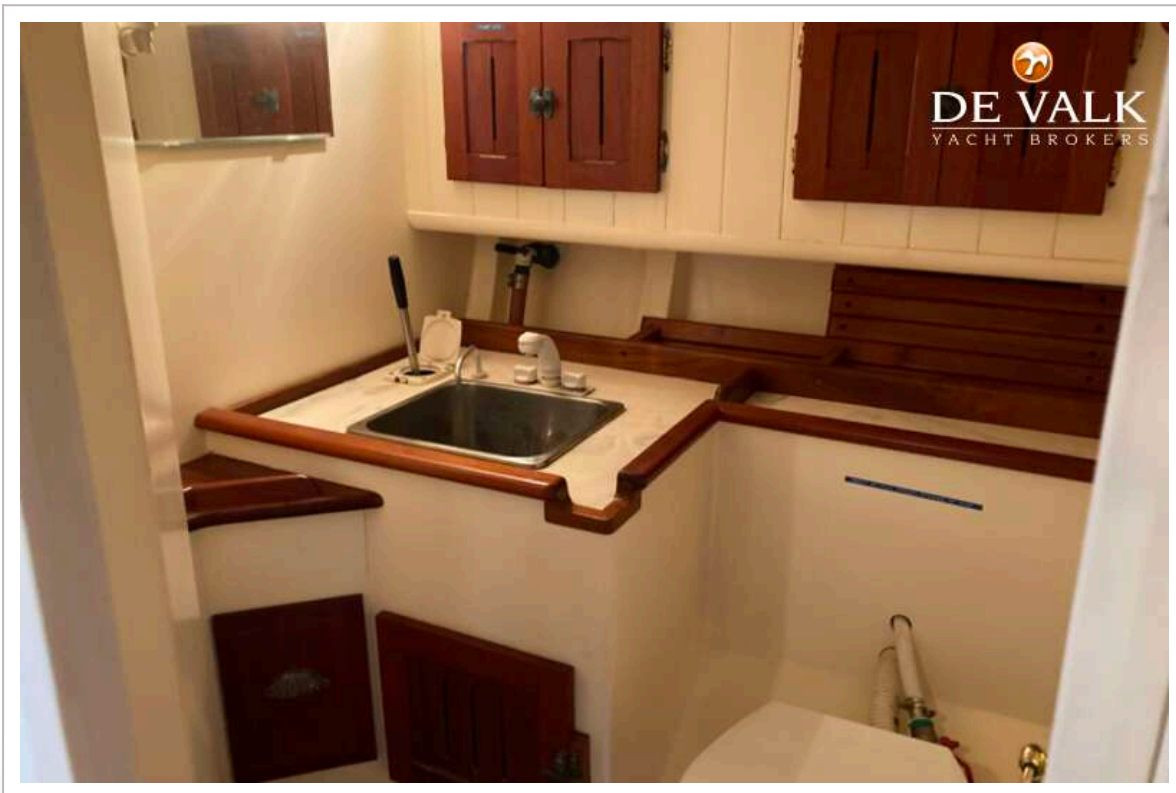
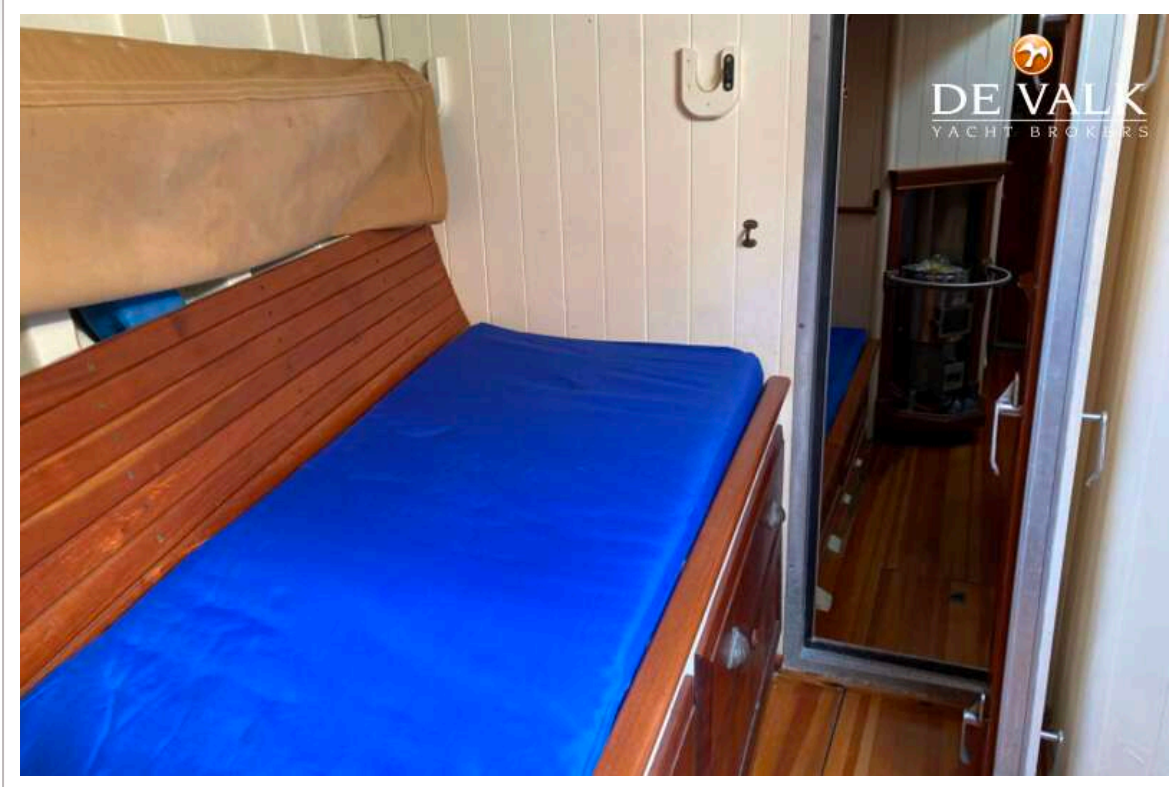
BRISTOL CHANNEL PILOT CUTTER



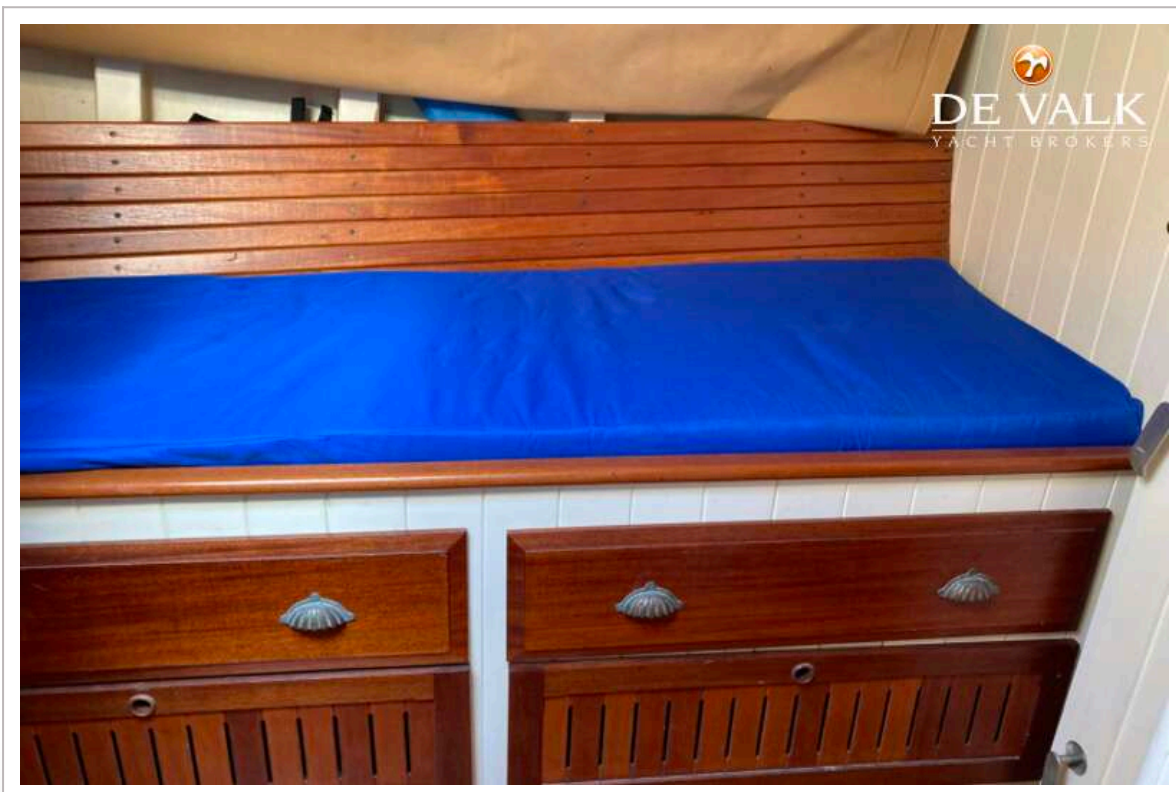
BRISTOL CHANNEL PILOT CUTTER



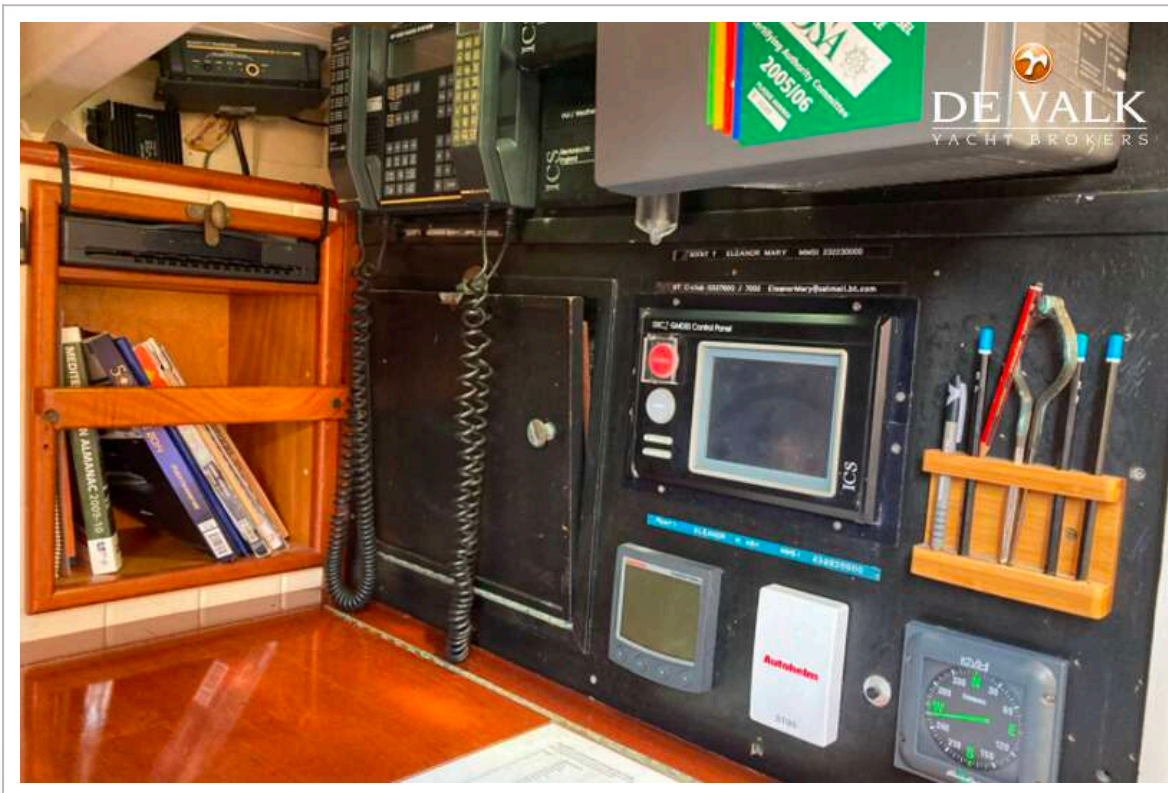
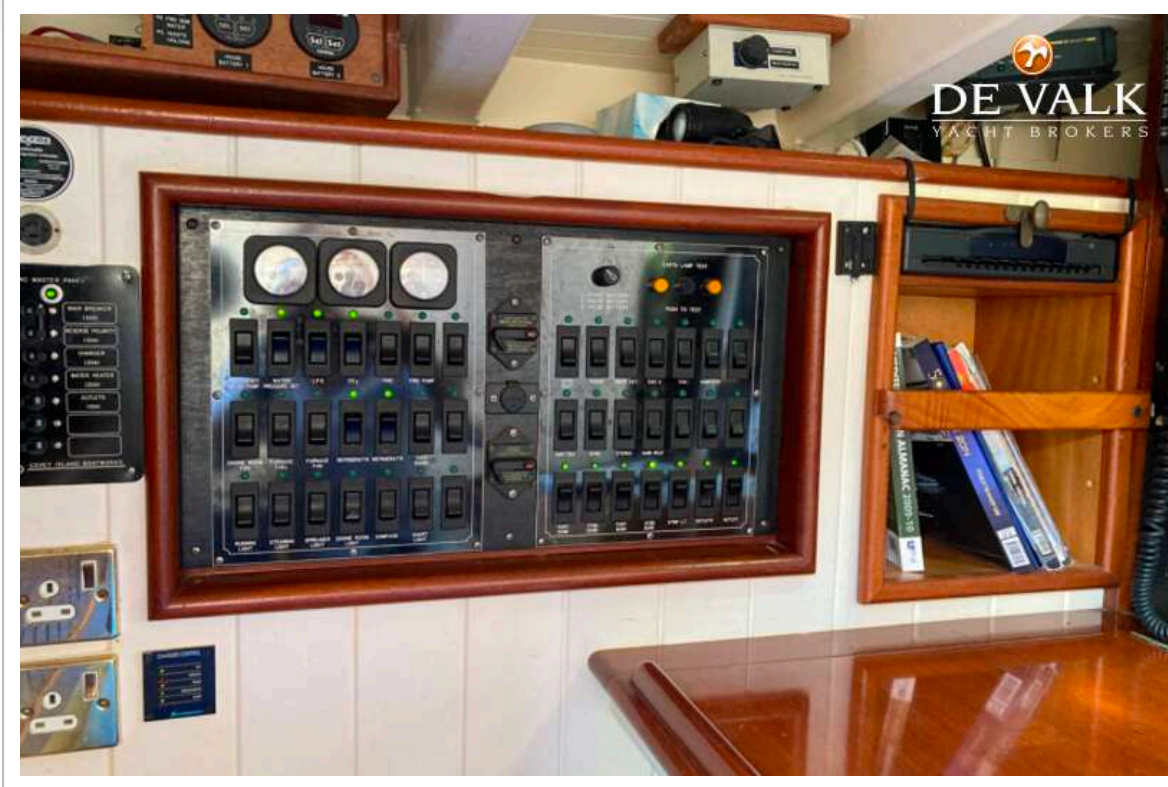
BRISTOL CHANNEL PILOT CUTTER



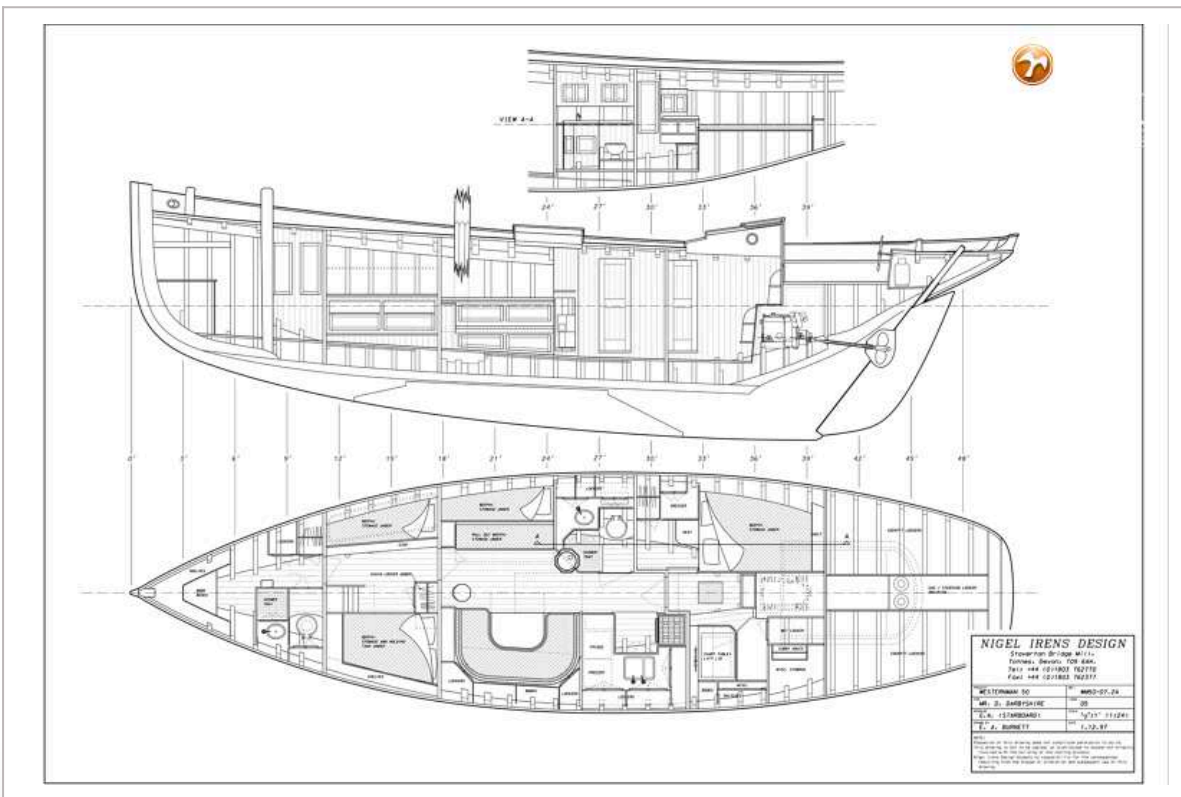
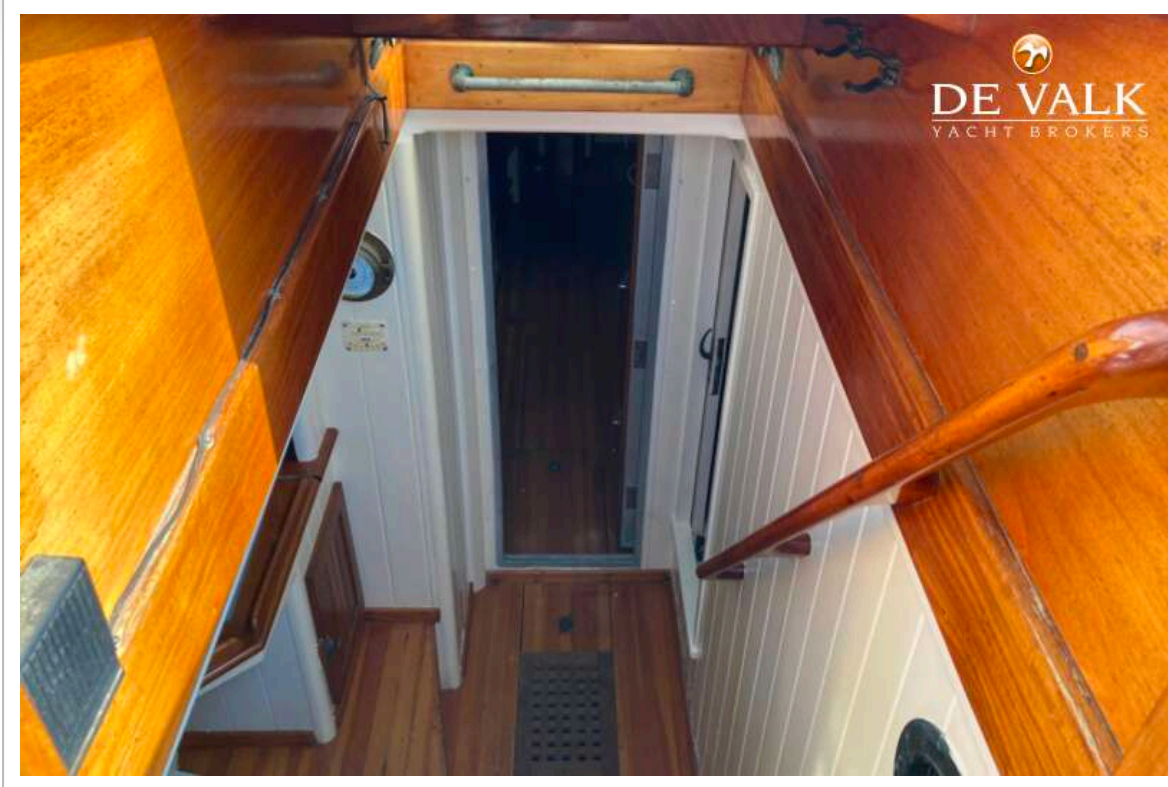
BRISTOL CHANNEL PILOT CUTTER



BRISTOL CHANNEL PILOT CUTTER



BRISTOL CHANNEL PILOT CUTTER



BRISTOL CHANNEL PILOT CUTTER



BROKERAGE | CHARTER | BERTHS | FINANCE | INSURANCE | YACHT MANAGEMENT

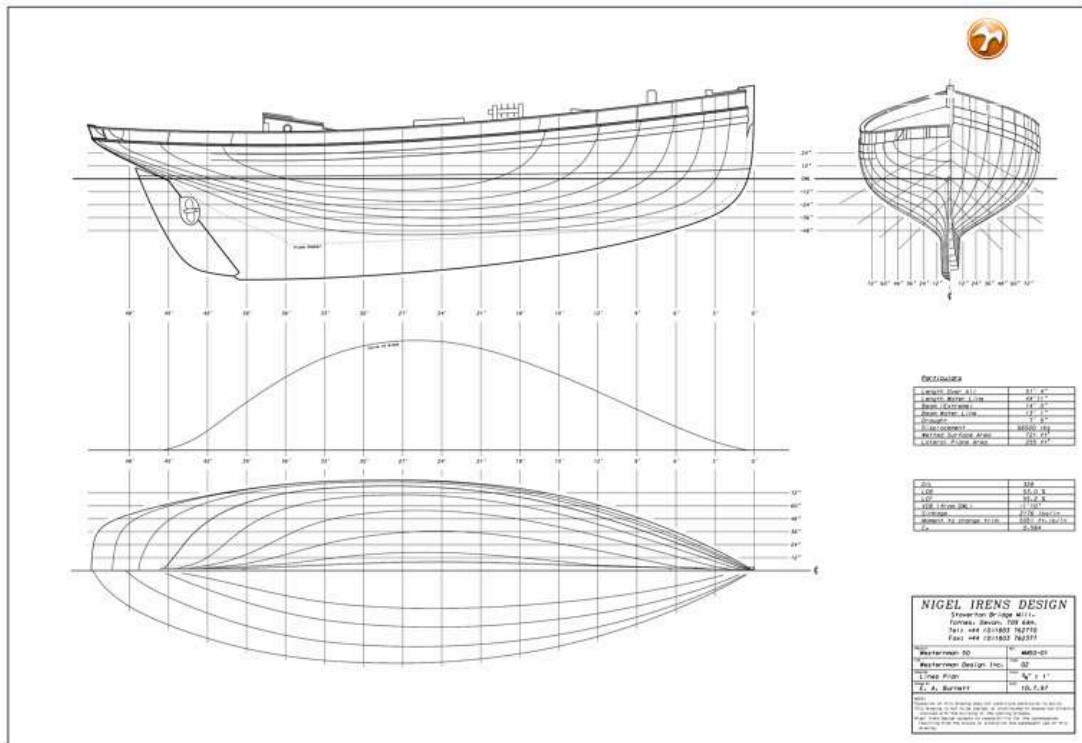


**This yacht will be auctioned,
for further details please visit www.devalk.nl**

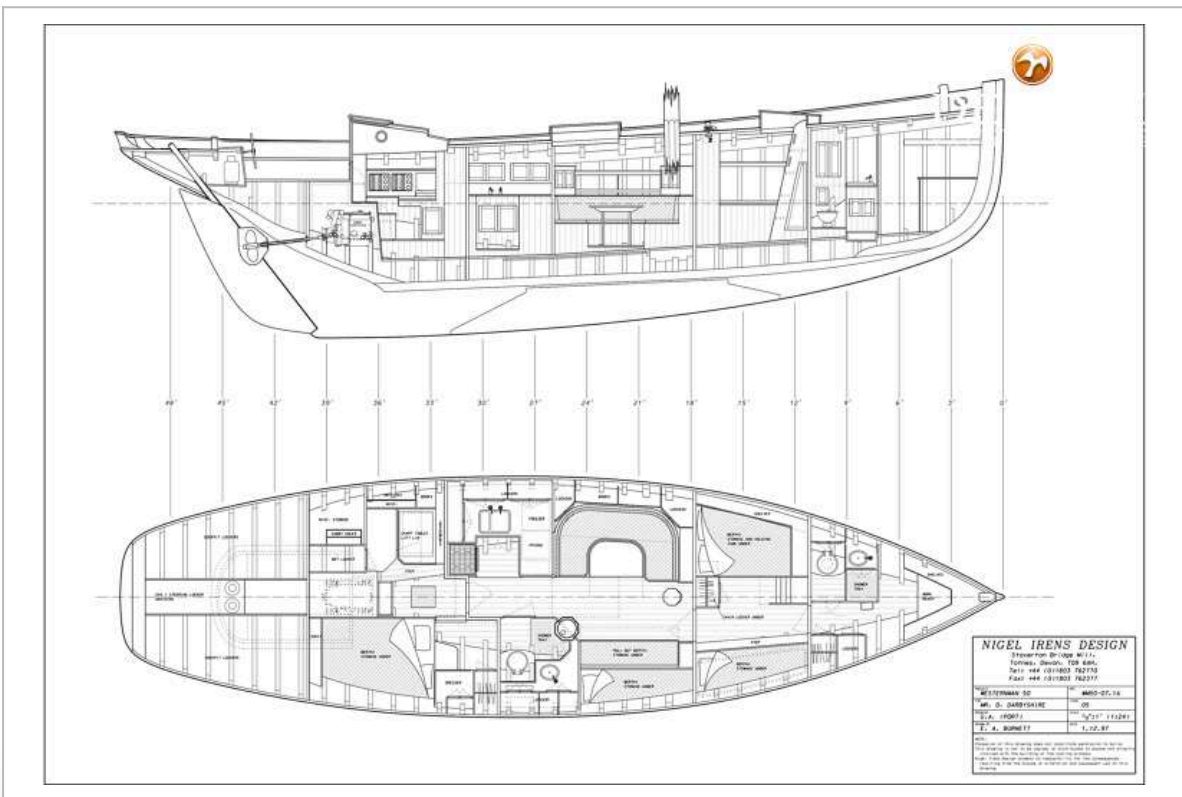
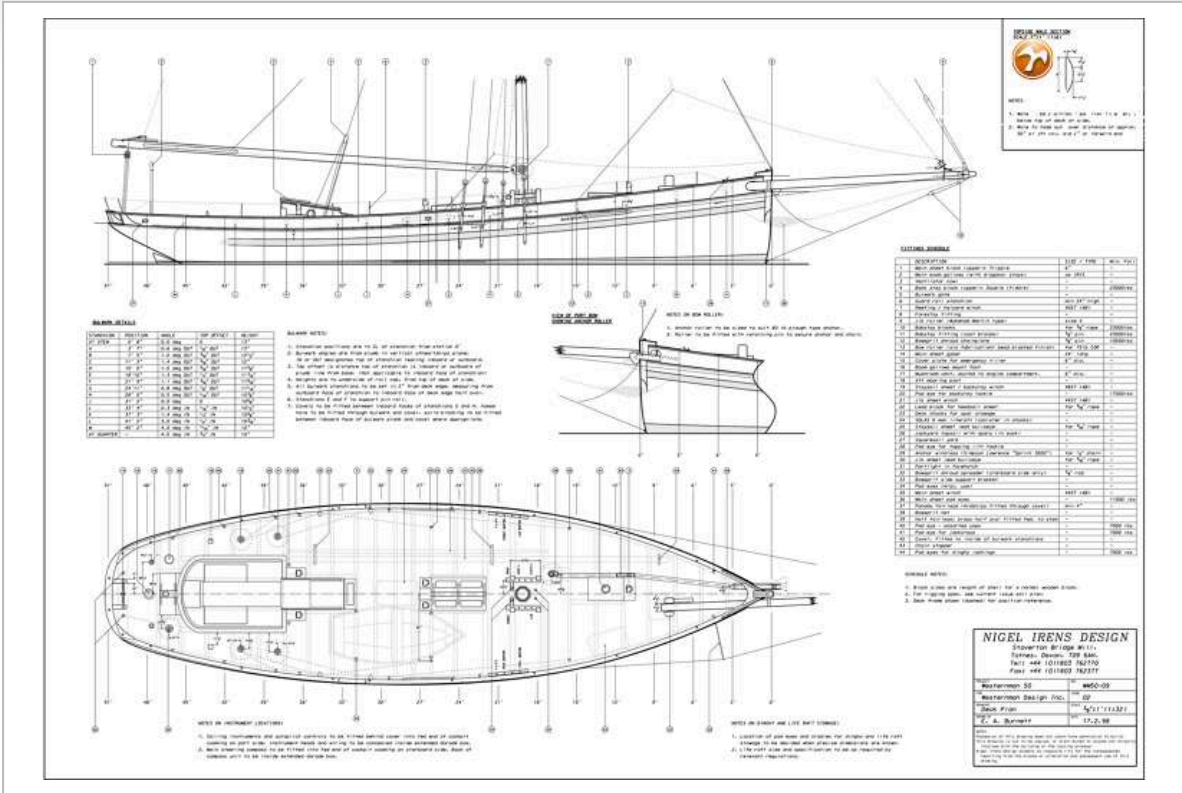
**Dit schip zal worden geveild,
voor meer informatie gaat u naar www.devalk.nl**

**Dieses Schiff wird versteigert,
für weitere informationen besuchen Sie www.devalk.nl**

WWW.DEVALK.NL



BRISTOL CHANNEL PILOT CUTTER



BRISTOL CHANNEL PILOT CUTTER

Mast Data

Item	Qty	Part No.	Part Name	Material
Mast	1	M1	12m Mast	Aluminum
Boom	1	B1	10m Boom	Aluminum
Spinnaker	1	S1	Spinnaker	1500gsm Dacron
Main	1	M1	Main	1500gsm Dacron
Mizzen	1	M2	Mizzen	1500gsm Dacron

Notes:

1. Mast and boom are to be stainless steel or aluminum.
2. Mast and boom are to be stainless steel or aluminum.
3. Mast and boom are to be stainless steel or aluminum.
4. Mast and boom are to be stainless steel or aluminum.
5. Mast and boom are to be stainless steel or aluminum.
6. Mast and boom are to be stainless steel or aluminum.
7. Mast and boom are to be stainless steel or aluminum.
8. Mast and boom are to be stainless steel or aluminum.
9. Mast and boom are to be stainless steel or aluminum.
10. Mast and boom are to be stainless steel or aluminum.

Rigging Data

Item	Qty	Part No.	Part Name	Material
Shroud	2	SH1	Shroud	12mm 316 SS
Staysail	1	ST1	Staysail	1500gsm Dacron
Staysail	1	ST2	Staysail	1500gsm Dacron
Staysail	1	ST3	Staysail	1500gsm Dacron
Staysail	1	ST4	Staysail	1500gsm Dacron
Staysail	1	ST5	Staysail	1500gsm Dacron
Staysail	1	ST6	Staysail	1500gsm Dacron
Staysail	1	ST7	Staysail	1500gsm Dacron
Staysail	1	ST8	Staysail	1500gsm Dacron
Staysail	1	ST9	Staysail	1500gsm Dacron
Staysail	1	ST10	Staysail	1500gsm Dacron

Notes:

1. Mast and boom are to be stainless steel or aluminum.
2. Mast and boom are to be stainless steel or aluminum.
3. Mast and boom are to be stainless steel or aluminum.
4. Mast and boom are to be stainless steel or aluminum.
5. Mast and boom are to be stainless steel or aluminum.
6. Mast and boom are to be stainless steel or aluminum.
7. Mast and boom are to be stainless steel or aluminum.
8. Mast and boom are to be stainless steel or aluminum.
9. Mast and boom are to be stainless steel or aluminum.
10. Mast and boom are to be stainless steel or aluminum.

Specifications

Item	Value
Length	12.00m
Beam	3.50m
Displacement	1500kg
Max Speed	15 knots
Max Range	1000 miles

NIGEL IRENS DESIGN
 33 Avenue Road, London, UK
 Tel: +44 (0)20 7237 1234
 Fax: +44 (0)20 7237 1235

Reference: 01
 Design: 01
 Date: 01/01/01
 E. A. Burns

