



TERRANOVA YACHTS T68

TERRANOVA YACHTS T68

BROKER'S COMMENTS

The original 68 foot model was built by the Terranova shipyard in Sardinia, and was delivered as a hull number 4 of only 8 semi-custom yachts ever made. The 1st hand owner has fitted the boat heavily and equipped with the highest standard equipment, including a solid 2-inch teak decking, custom made furniture, 2x 136kg ship anchors w/16mm chain, TRAC zero-speed stabilisers, custom audio and stereo system on and below deck etc. In 2014 it was commissioned a major refit with all new refurbishing, refitting and deck and layout changes including technical and mechanical updates. The boat sailed the Caribbean, Bahamas, U.S. East coast and the Mediterranean. She has completed over 5,000NM and long-distance sailing. The displacement and handling is exceptional as she has experienced very rough seas and difficult situations with absolutely no mechanical or construction problems. The current second hand owner has upgraded the yachts with a brand new water maker system, and has taken great care of the maintenance. Fully crewed all year. There are all original invoices for every working hour or spare part that ever happened onboard in the past 4 years. The boat is loaded with spare parts for everything in the engine room as well as on deck, including engines, generators, AC, navigation, tender, electronics, hydraulics etc. There is a recorded logbook for every move, transfer, or casual cruise and every recorded expense regarding the boat, backed with every original receipt.

Tue Simon Fasting

SPECIFICATIONS

Dimensions	20.35 x 6.20 x 1.60 (m)	Builder	Terra Nova Shipyards
Built	2008	Cabins	3
Material	GRP	Berths	6
Engine(s)	2 x MAN diesel	Hp/Kw	2 x 650.00 (hp), 477.00 (kw)
Asking price	sold (VAT)	Lying	at sales office

CONTACT

Sales office De Valk Barcelona
Address Barcelona region
08392 Barcelona
ES

Telephone +34 932 202 825
E-mail barcelona@devalk.nl



DISCLAIMER

These particulars are given in good faith as supplied but cannot be guaranteed.

GENERAL

Model	TERRANOVA YACHTS T68
Type	motor yacht
LOA (m)	20,35
LWL (m)	19,35
Beam (m)	6,20
Draft (m)	1,60
Year built	2008
Builder	Terra Nova Shipyards
Country	Italy
Displacement (t)	60
CE norm	A
Hull material	GRP
Deck material	teak
Deck finish	teak
Window frame	aluminium
Flybridge cover	Yes
Radar arch	non collapsible
Fuel tank (litre)	6000
Level indicator (fuel tank)	Yes
Fuel daytank (litre)	1000
Level indicator (daytank)	Yes
Freshwater tank (litre)	1000
Level indicator (freshwater)	Yes
Blackwater tank (litre)	350
Level indicator (blackwater)	Yes
Greywater tank (litre)	350
Level indicator (greywater)	Yes
Wheel steering	hydraulic
Flybridge helm position	hydraulic



ACCOMMODATION

Cabins	3
Berths	6
Crew cabin	1
Crew berths	2
Interior	teak
Floor	teak
Headroom saloon (m)	2.1
Heating	central heating
Air-conditioning	reverse cycle airco
Chart table	Yes
Dining room	Yes
Dinette	Yes
Galley	Yes
Sink	stainless steel
Cooker	induction
Oven	Yes
Extractor	Yes
Microwave	Yes
Fridge	Yes
Hot water system	220V
Water pressure system	electrical
Dishwasher	Yes
Coffee maker	Yes
Crockery	Yes
Owners cabin	double bed
Wardrobe	hanging/drawers/shelves
Bathroom	en suite
Toilet	en suite
Shower	en suite
Guest cabin 1	double bed



TERRANOVA YACHTS T68

Wardrobe	hanging/drawers/shelves
Bathroom	en suite
Toilet	en suite
Shower	en suite
Guest cabin 2	twin single
Wardrobe	hanging/drawers/shelves
Bathroom	en suite
Toilet	en suite
Shower	en suite
Wardrobe	hanging/drawers/shelves
Bathroom	En suite
Toilet	en suite
Shower	en suite
Crew cabin(s)	1
Bathroom (crew)	1
Toilet (crew)	1
Shower (crew)	1
Washing machine/dryer combi	Yes
Ironing facilities	Yes
Flybridge	Yes
Wet bar	Yes

MACHINERY

No of engines	2
Make	MAN
HP	650,00
kW	477,00
Fuel	diesel
Maximum speed (kn)	16,00
Cruising speed (kn)	12
Consumption (l/hr)	45 total



TERRANOVA YACHTS T68

Range (nm)	2625 nm @ 7,5 knots
Engine hours	1100
Engine cooling system	seawater
Engine controls	
Engine controls	electrical
Bowthruster	hydraulic
Sternthruster	hydraulic
Exhaust	watercooled
Propeller type	folding
Manual bilge pump	Yes
Electric bilge pump	Yes
Bilge alarm	Yes
Generator	wet exhaust 2 X Kohler 20KW each
Start battery	Yes
Service battery	Yes
Stabilizers	Yes

NAVIGATION

Compass	Yes
Compass on flybridge	Yes
Electric compass	Yes
Depth sounder	Yes
Depth sounder/log	Yes
Forw. looking depth sounder	Yes
Log	Yes
Windset	Yes
VHF	Yes
VHF handheld	Yes
Autopilot	Yes
Radar	Yes
GPS	Yes



Plotter	Yes
Radar/GPS/plotter	Yes
EPIRB	Yes
Searchlight	Yes

EQUIPMENT

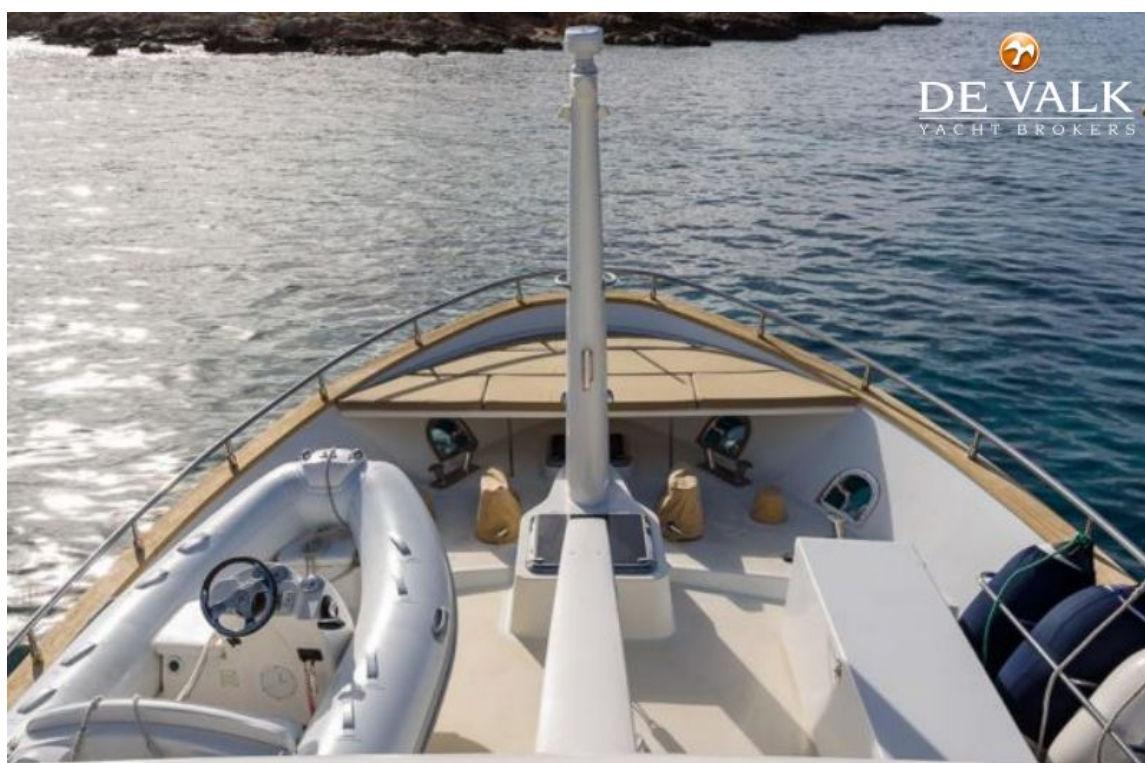
Bimini	Yes
Bathing platform	Yes
Boarding ladder	steel Yes
Gangway	Yes
Deck shower	yes
Dinghy	2 tenders
Deck crane	hydraulic
Life raft	Yes
Wiper	Yes
Alarm system	Yes
TV	Yes
TV receiver	Yes
Satellite	Yes
Radio-cd player	Yes
DVD player	Yes
iPod connection	Yes
Surround Sound System	Yes



TERRANOVA YACHTS T68



TERRANOVA YACHTS T68



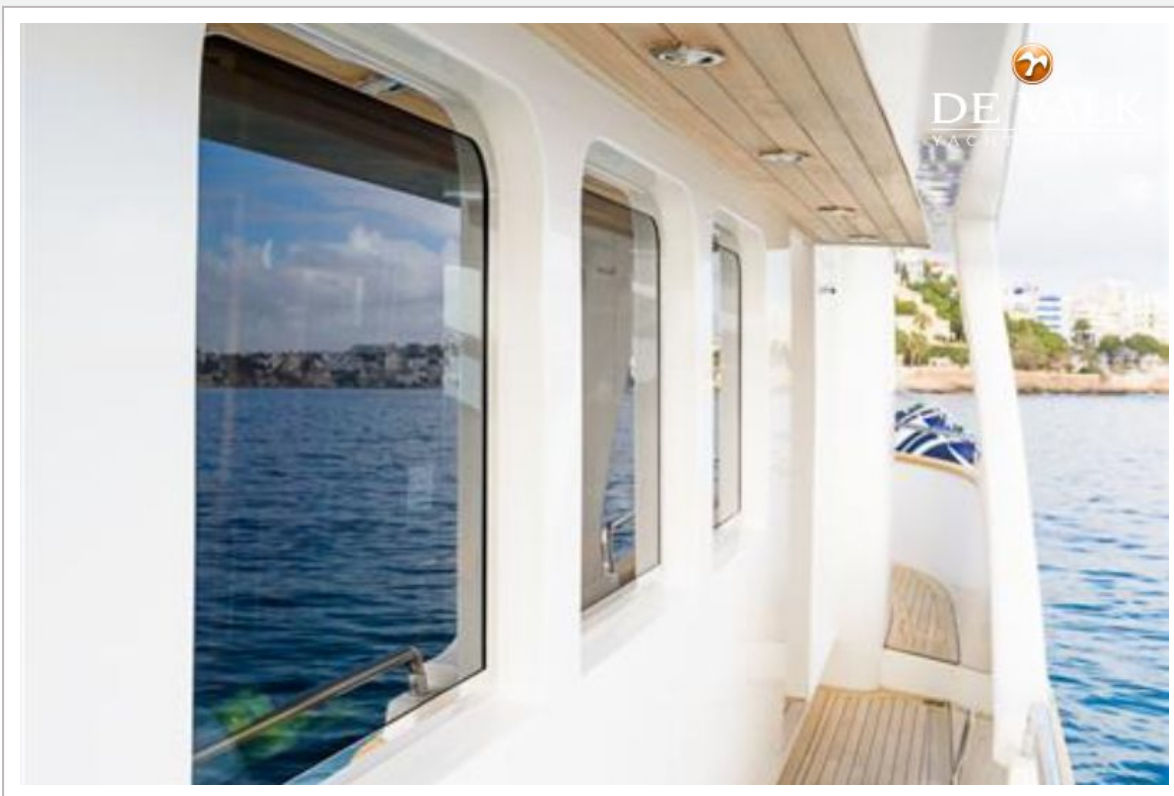
TERRANOVA YACHTS T68



TERRANOVA YACHTS T68



TERRANOVA YACHTS T68



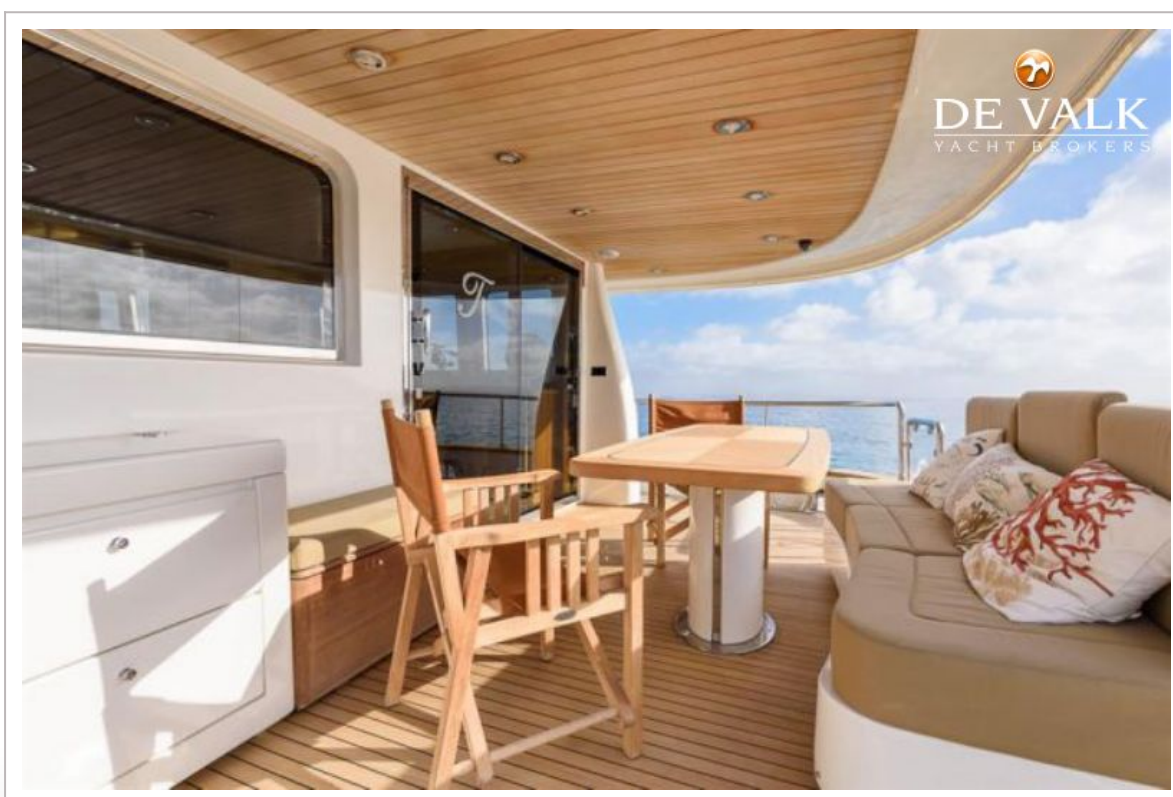
TERRANOVA YACHTS T68



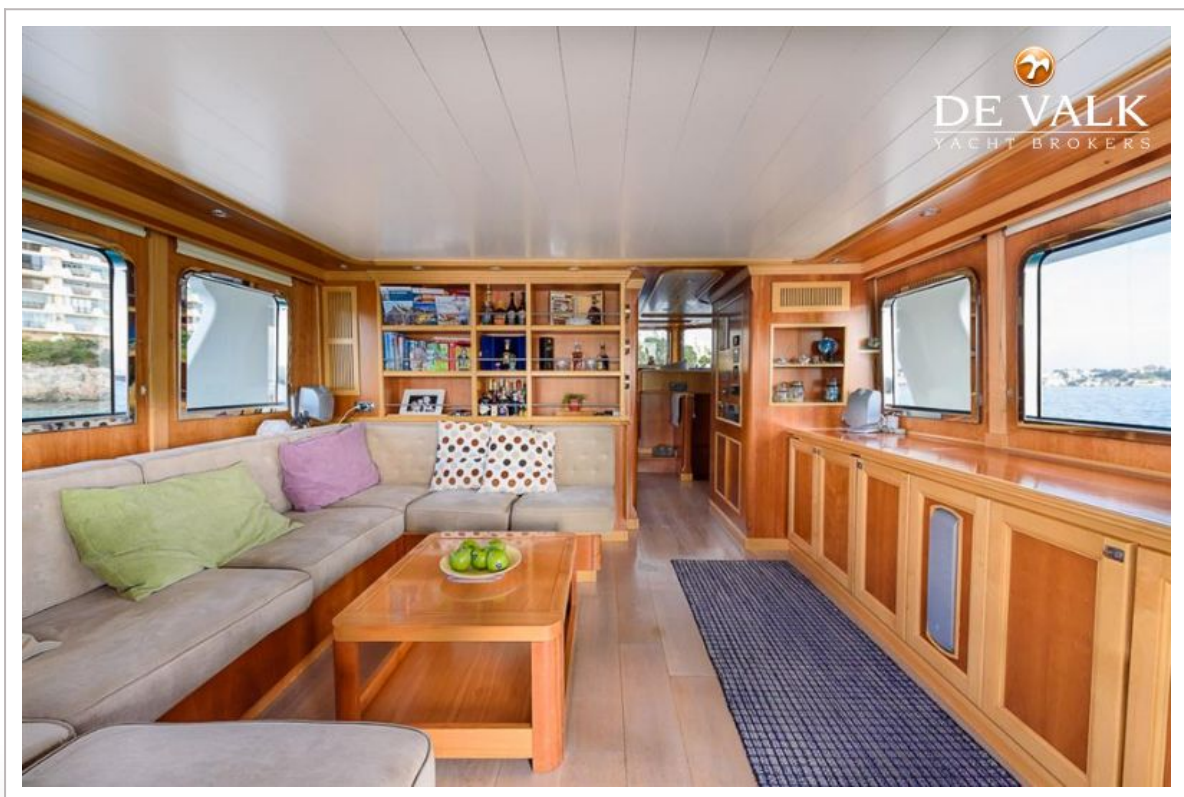
TERRANOVA YACHTS T68



TERRANOVA YACHTS T68



TERRANOVA YACHTS T68



TERRANOVA YACHTS T68



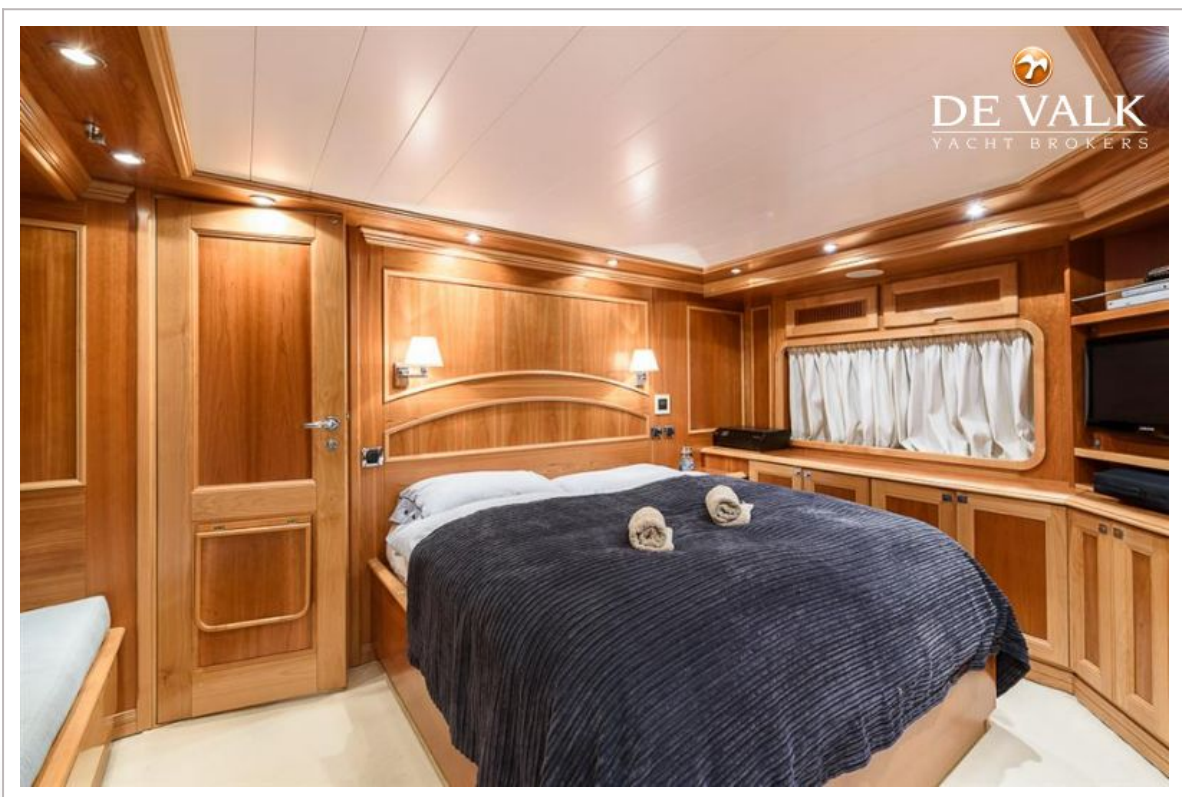
TERRANOVA YACHTS T68



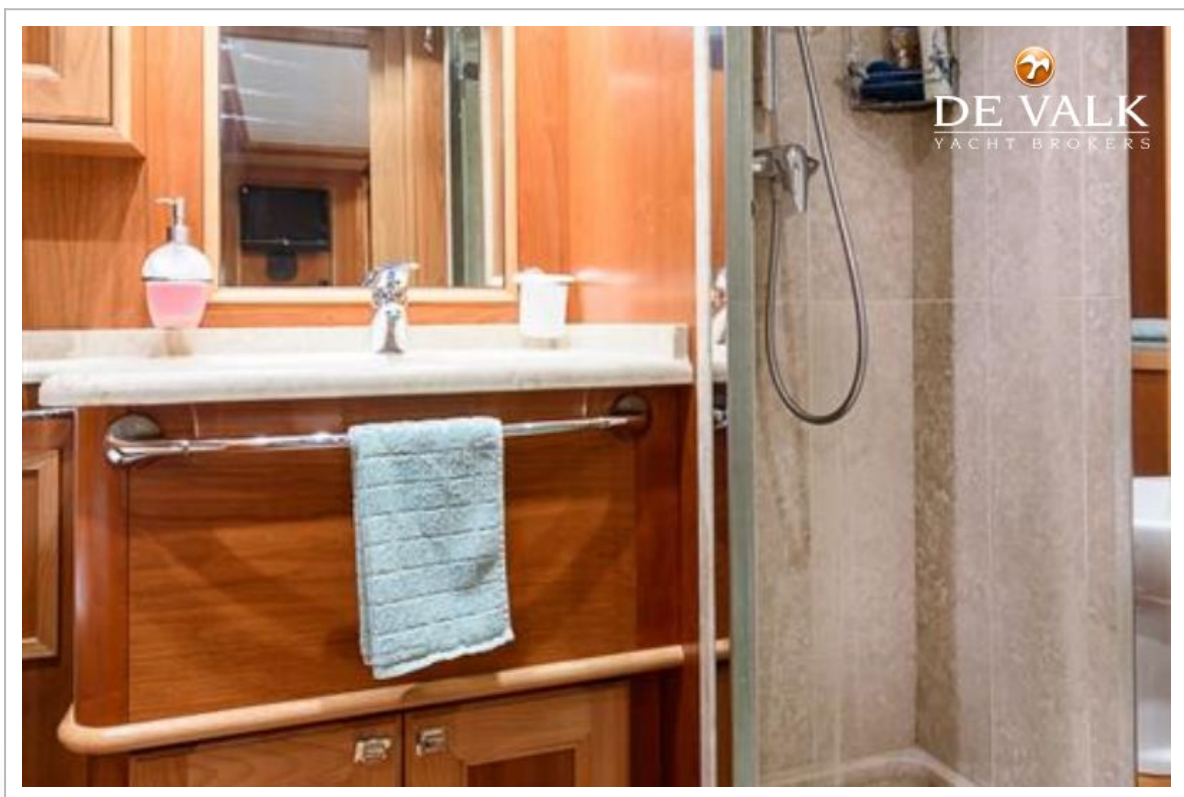
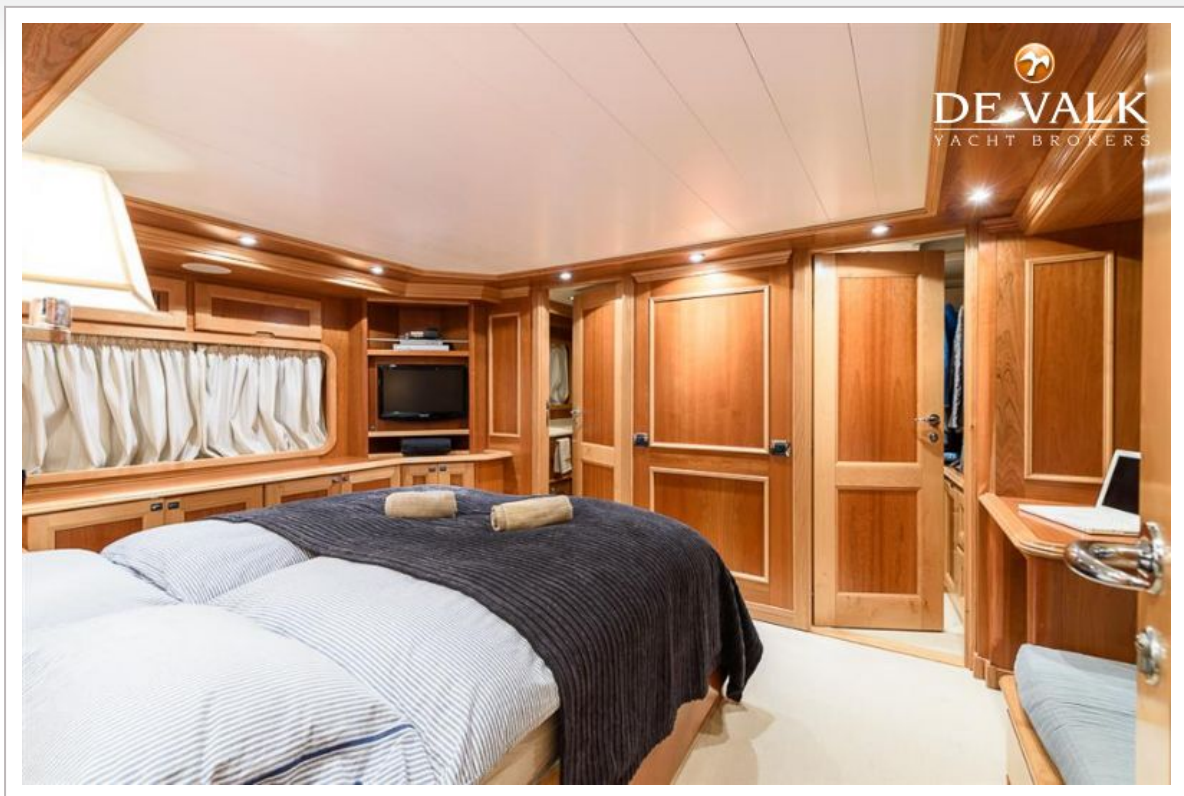
TERRANOVA YACHTS T68



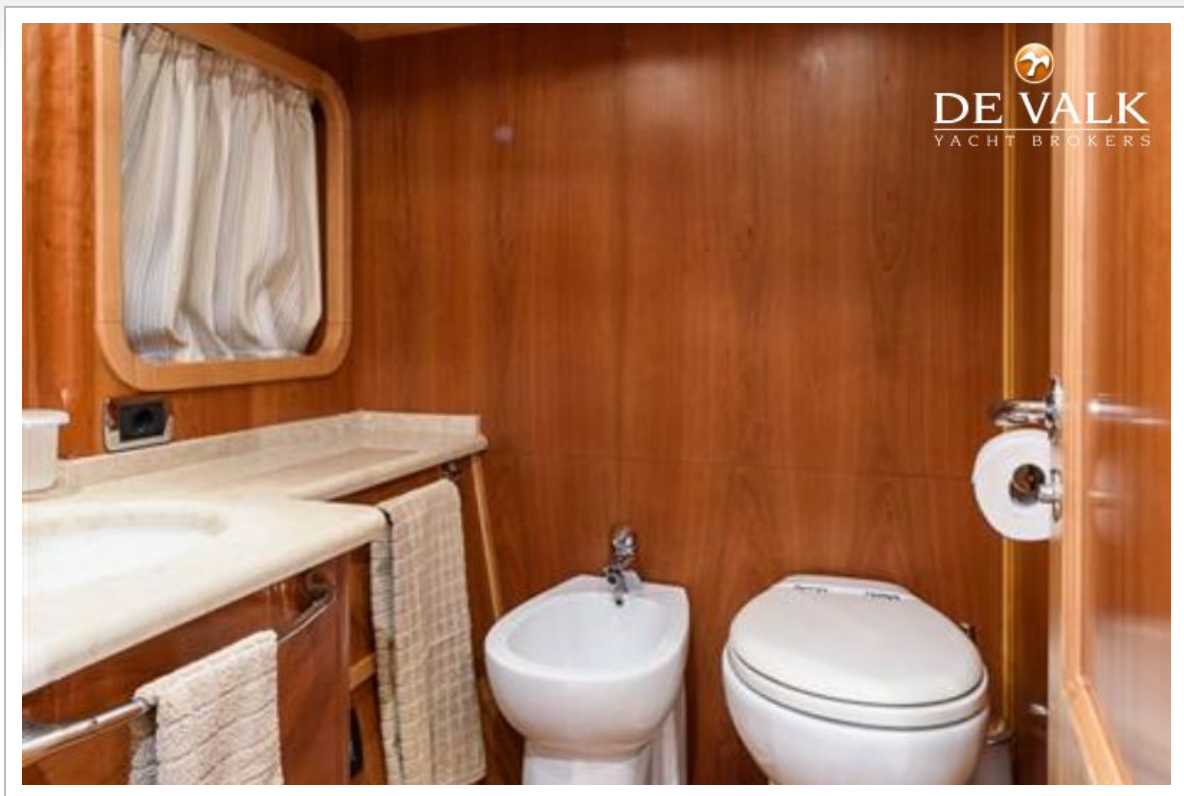
TERRANOVA YACHTS T68



TERRANOVA YACHTS T68



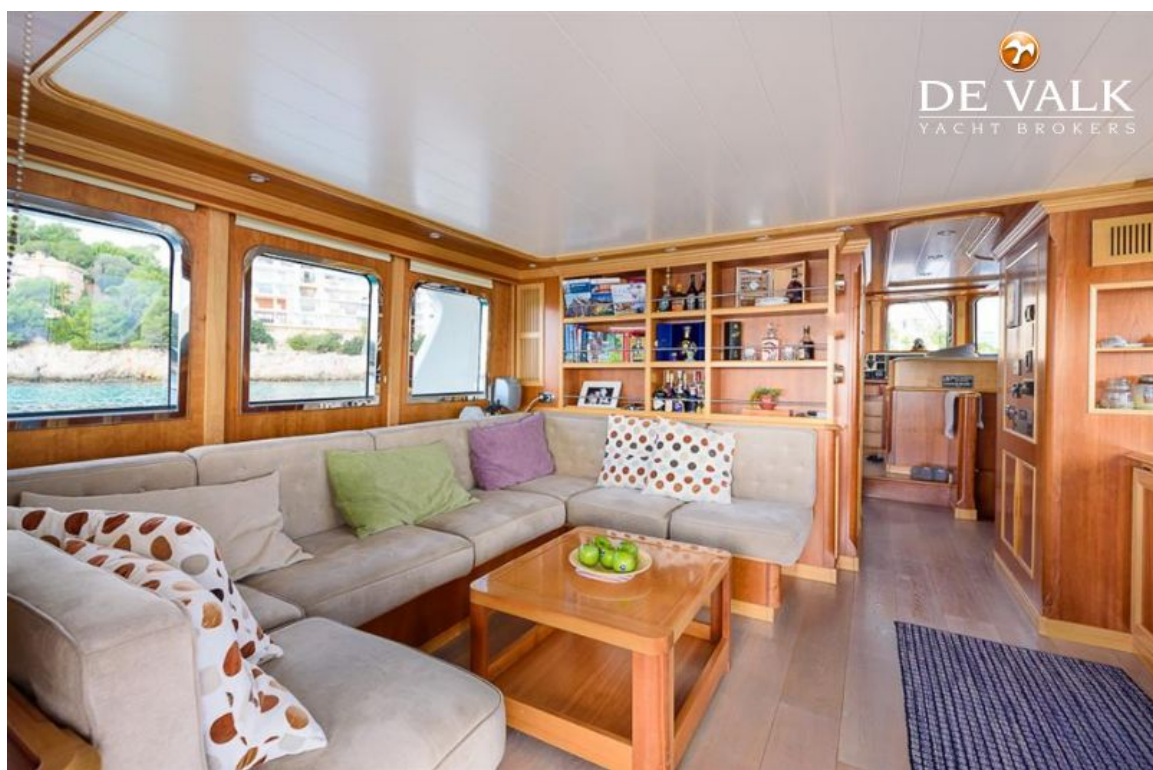
TERRANOVA YACHTS T68



TERRANOVA YACHTS T68



TERRANOVA YACHTS T68



TERRANOVA YACHTS T68

