



DE VALK
YACHT BROKERS



PACIFIC TRAWLERS 72



DE VALK
YACHT BROKERS

PACIFIC TRAWLERS 72

BROKER'S COMMENTS

Designed by Joubert and built as a commercial vessel with the complete construction under the control of Bureau Veritas, using 8mm "sealium" that is 20% stronger than aluminium. In short a rock solid go anywhere explorer yacht! The Pacific 72 Trawler offers ample space and all the comforts from home and is equally comfortable in the inland water ways as she is at blue water cruises.

Reinoud Bicker Caarten

SPECIFICATIONS

Dimensions	22.77 x 5.90 x 1,50 / 1.60 (m)	Builder	Alubat / TMC Trans Marine Corporation
Built	2006	Cabins	3
Material	Aluminium	Berths	6
Engine(s)	2 x Caterpillar C12 Acert diesel	Hp/Kw	2 x 710.00 (hp), 521.85 (kw)
Asking price	€ 575.000 (VAT Paid)	Lying	elsewhere / Not at sales office

CONTACT

Sales office	De Valk Portugal	Telephone	+351 308 812321
Address	Edifício Administrativo - Ponta da Areia 8500 - 345 Portimão PT	E-mail	portugal@devalk.nl

DISCLAIMER

These particulars are given in good faith as supplied but cannot be guaranteed.



GENERAL

Model	PACIFIC TRAWLERS 72
Type	motor yacht
LOA (m)	22,77
LWL (m)	19,30
Beam (m)	5,90
Draft (m)	1,60
Draft min (m)	1,50
Air draft (m)	7,70
Air draft min (m)	4,95
Year built	2006
Builder	Alubat / TMC Trans Marine Corporation
Country	France
Designer	Joubert / Nivelt
Displacement (t)	60
Gross tonnage	50,91
CE norm	A
Hull material	aluminium
Hull colour	grey Light
Hull thickness (mm)	yes
Hull shape	hard chine
Keel type	box keel
Superstructure material	aluminium
Deck material	aluminium
Deck finish	non-skid paint
Superstructure deck finish	paint
Cockpit deck finish	non-skid paint
Window frame	aluminium
Window material	glass
Deckhatch	2 x
Portholes	15 opening 4 fixed



Insulation	foam plates Roofmate
Flybridge	yes
Radar arch	collapsible
Fuel tank (litre)	2 x 2000 ltr
Fuel tank 2 (litre)	5000 ltr
Level indicator (fuel tank)	yes
Fuel daytank (litre)	yes
Level indicator (daytank)	yes
Freshwater tank (litre)	2000
Level indicator (freshwater)	yes
Blackwater tank (litre)	500 l + 100 l
Level indicator (blackwater)	yes
Blackwater tank extraction	deck extraction + pump
Greywater tank (litre)	500 l
Level indicator (greywater)	yes
Wheel steering	yes
Inside helm position	yes
Flybridge helm position	hydraulic
Emergency tiller	yes
More info on hull	all materials, constructionwork, welding certified by bureau Veritas. The structure was designed as a commercial vessel. Made from Sealium, stronger than aluminium, seawater resistant
More info on paintwork	above the waterline it can do with a fresh paintjob
Extra info	Extremely stable load capacity 12850 kg

ACCOMMODATION

Cabins	3
Berths	6
Crew cabin	1
Crew berths	2 single
Interior	teak Solid wood classic dark
Layout	Owner



Floor	wood
Aft deck	yes
Pilot house/deck saloon	yes
Saloon	yes
Headroom saloon (m)	2,1m
Air-conditioning	reverse cycle airco Cruisair Tempered water system 36000 BTU each
Navigation center	yes
Dining room	yes
Dinette to convert into berth	yes
Opening door to cockpit	Both sides
Opening door to aft deck	yes
Galley	U shaped
Countertop	granite
Sink	stainless steel Double
Cooker	induction 4-pit NEFF
Oven	NEFF, stainless steel, electric
Microwave	NEFF, stainless steel
Fridge	NEFF
Freezer	NEFF
Hot water system	220V + engine Raritan 75 ltr
Water pressure system	electrical 20L Hydrophore
Dishwasher	EG, stainless steel
Kettle	yes
Hot water tap	yes
Owners cabin	double bed
Bed length (m)	2m x 1,6m
Wardrobe	drawers
Bathroom	en suite
Toilet	en suite
Toilet system	electric ACTANA Navy Flash 24v
Wash basin	in the bathroom



Shower	en suite
Guest cabin 1	double bed
Bed length (m)	1,95m x 1,5m
Wardrobe	hanging/drawers/shelves 2
Bathroom	separate
Toilet	en suite
Toilet system	electric ACTANA Navy Flash 24v
Wash basin	in the bathroom
Shower	en suite
Guest cabin 2	2 bunk beds
Bed length (m)	2m x 0,8m and 2m x 0,76m
Wardrobe	hanging and shelves
Bathroom	separate
Toilet	en suite
Toilet system	electric ACTANA Navy Flash 24v
Wash basin	in the bathroom
Shower	en suite
Extra info	The toilet has 2 entrances to be used as "day toilet"
Crew cabin(s)	1
Bathroom (crew)	yes
Toilet (crew)	yes
Toilet system	electric Jabsco 2019
Wash basin	yes
Washing machine	yes
Flybridge	yes

MACHINERY

No of engines	2
Make	Caterpillar
Type	C12 Acert
HP	710



kW	521.85
Fuel	diesel
Year installed	2005
Maximum speed (kn)	17
Cruising speed (kn)	11
Consumption (l/hr)	45
Range (nm)	2000
Engine hours	910
Engine cooling system	freshwater heat exchanger
Drive	shaft
Engine controls	electrical Caterpillar
Gearbox	hydraulic ZF 350
Bowthruster	hydraulic Side Power SP550HYD
Exhaust	watercooled
Thrust bearing	joint aquadrive CV60 Aquadrive HDL700
Propeller type	fixed
Propeller blades	with Prospeed coating 4-bladed
Propeller shaft material	stainless steel 80mm Cupro-alu
Shaft lubrication	water Seal Ecrem
Manual bilge pump	2 x
Electric bilge pump	4 x
Bilge alarm	2x
Electrical installation	12 & 24 V DC and 240 V 50 Hz
Generator	wet exhaust Kohler 17 kw, needs new relay
Running hours generator	1200
Generator 2	wet exhaust Onan 8 kw (2020)
Running hours generator 2	1000
Batteries	2x2 2018
Start battery	2 x 180Ah new 05/2025
Service battery	4 x 280Ah new 2024 & 4 x 140Ah lead 2019 as backup
Electric engine battery	2 x 2 (2018)
Generator battery	1 x 180Ah + 1x 140Ah



Battery monitor	Octopus
Battery charger	Victron Skylla TG 24v 80Amp, Victron Centaur 24v 80Amp, Victron Blue power 12v 25Amp
Inverter	yes
Battery charger/inverter	4
Solar panel	4 x 300 w + 3 x 110 w (2019)
Shorepower	with cable
Insulation transformer	3600w 115/230 v Cristec
Watermaker	Spectra Newport 400 : 60lt per hour, revised 2024
Stabilizers	fin Vetus
Extra info	13,2 kts for 2 engine at 1900 rpm,
Extra info	10kts for two engine at 1400 rpm
Extra info	12,4kts engine at 1800 rpm,

NAVIGATION

Compass	Danforth
Compass on flybridge	Plastimo 85
Electric compass	Simrad
Depth sounder	new transducer 2025 Simrad IS15
Log	Simrad IS15
Repeater	Simrad IS15
VHF	Midland & Simrad RS87
Autopilot	Simrad AP50
Radar	Simrad
GPS	Simrad GN33
Plotter	Simrad
Radar/GPS/plotter	Simrad CX 54
Electronis chart(s)	yes
EPIRB	ACR
Navigation lights	6 Aquasignal type 55
Searchlight	1x 220V



EQUIPMENT

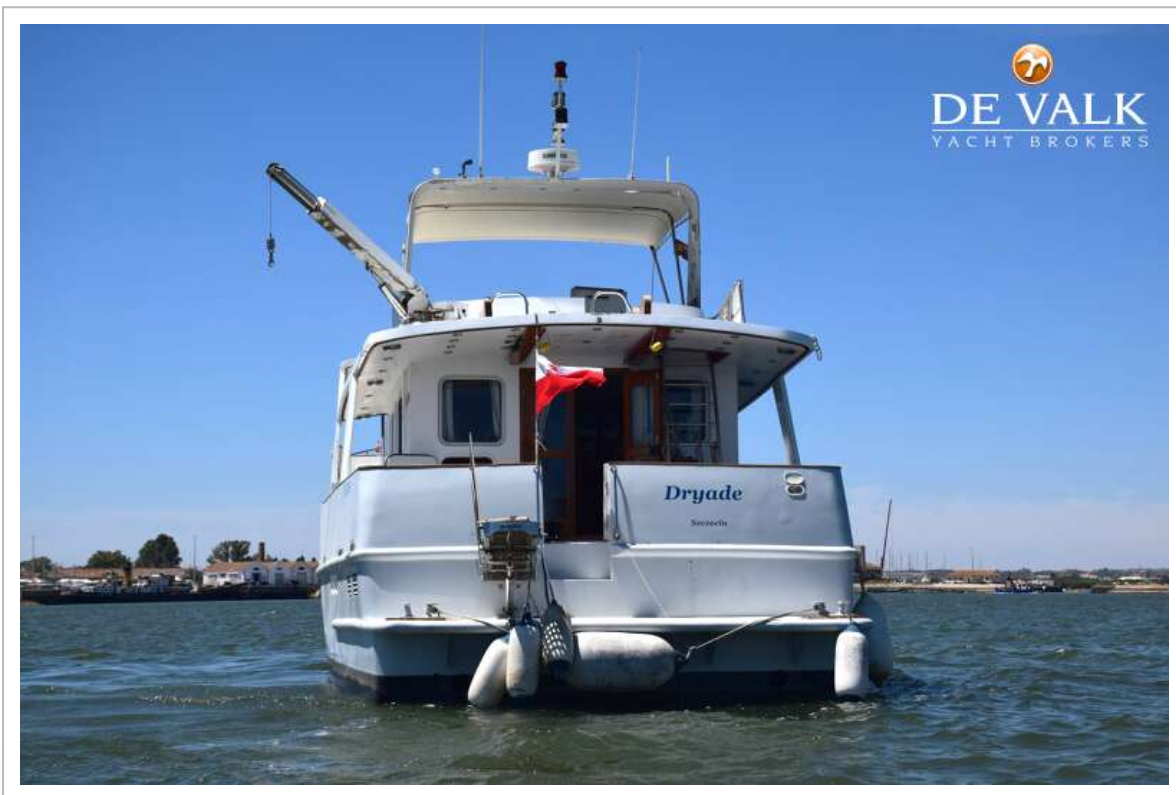
Cockpit cover	yes
Bimini	New 2024
Cockpit cushions	yes
Cockpit table	yes
Bathing platform	1,35m x 4,50m
Boarding ladder	stainless steel
Transom door	yes
Gangway	Hydraulic opacmare
Deck shower	yes
Anchor	Delta FOP HP 120kg, new 2019
Anchor chain	80m, 14 mm
Anchor 2	Delta Lewmar Delta 63kg
Anchor chain	120 m, 14 mm
Windlass	hydraulic 2x Maxwell 4000
Deck wash	yes
Dinghy	inflatable Polyester 4 m, Zodiac 220
Outboard	6hp 4stroke new 2024
Deck crane	hydraulic OPACMARE 350 kg
Sea railing	yes
Grab rail (superstructure)	aluminium
Railing side opening gates	yes
Pushpit	yes
Pulpit	yes
Life raft	8 pax new 2024
Life raft (pers)	yes
Lifejackets	10 (6 inflatable)
Lifebuoy	2
Danbuoy	yes
Wiper	3 x
Horn	air pressure



Fenders	yes
Mooring lines	yes
Spare parts	yes
Tools	yes
Alarm system	Fire alarm in engine room
TV	yes
Radio	yes
DVD player	yes
Clock - barometer	yes
Fire extinguisher	9x
Extra info	4 survival suits





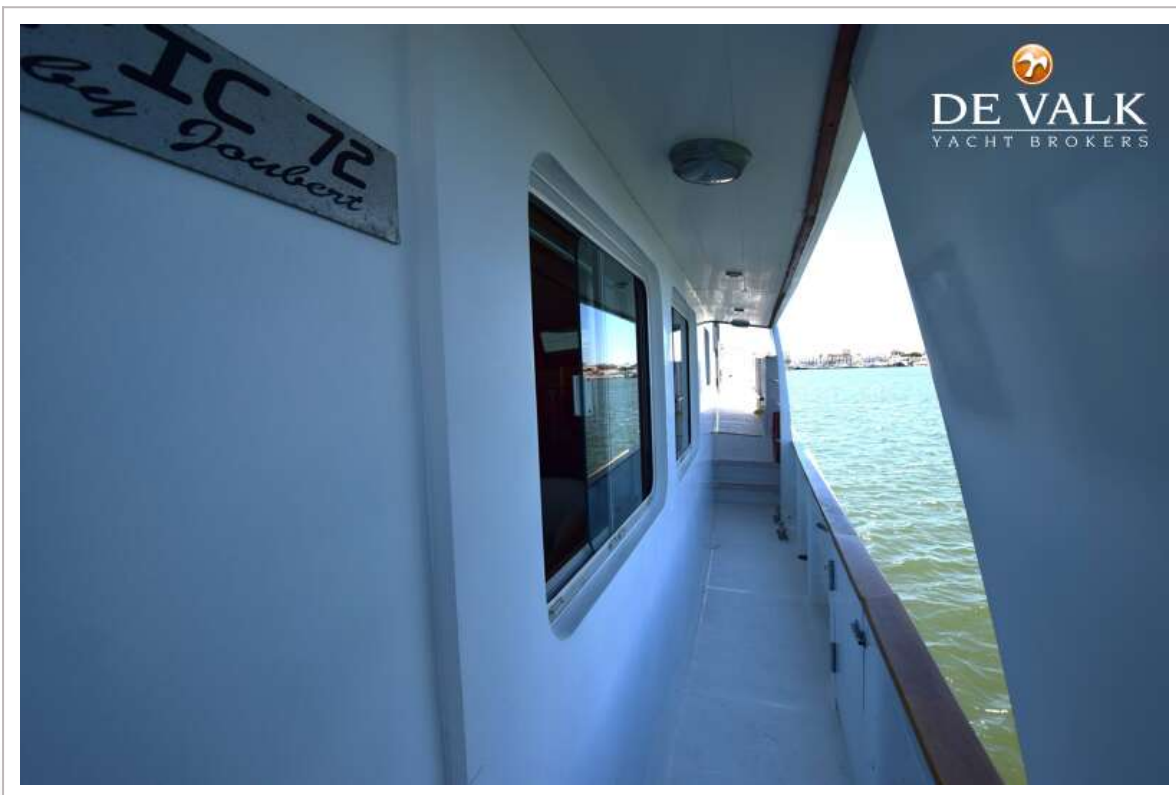


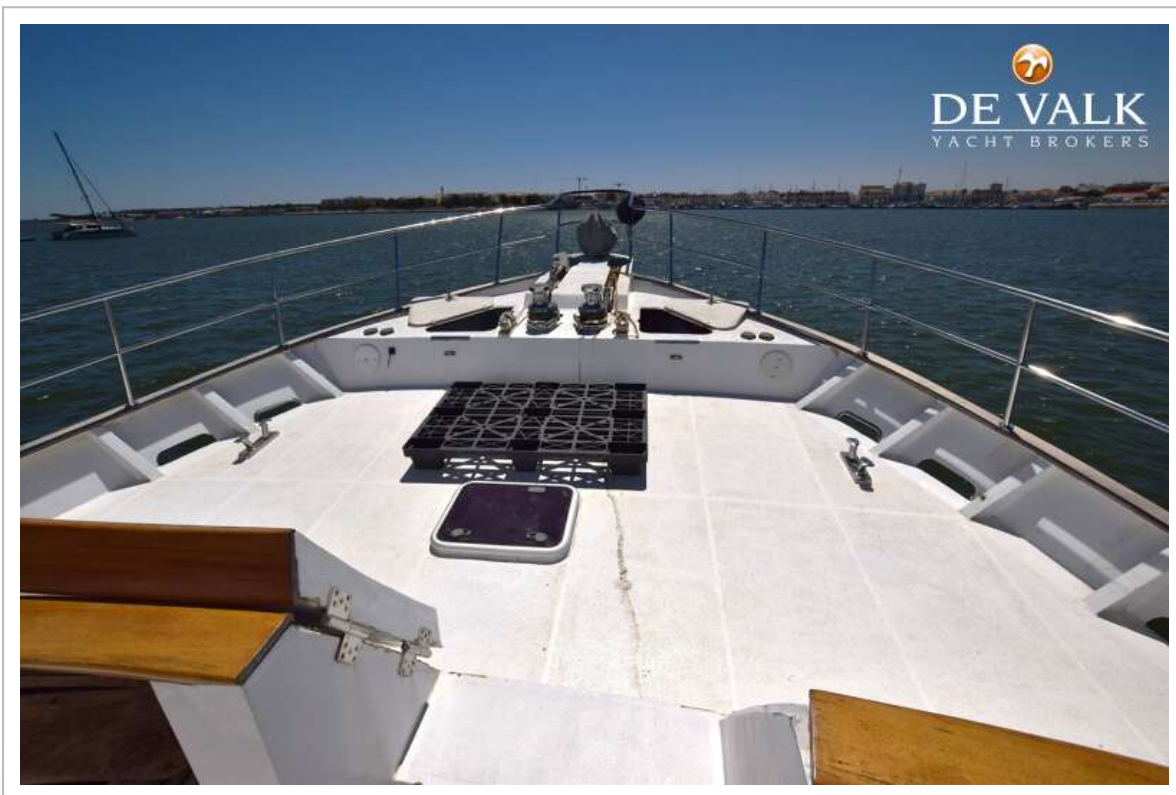
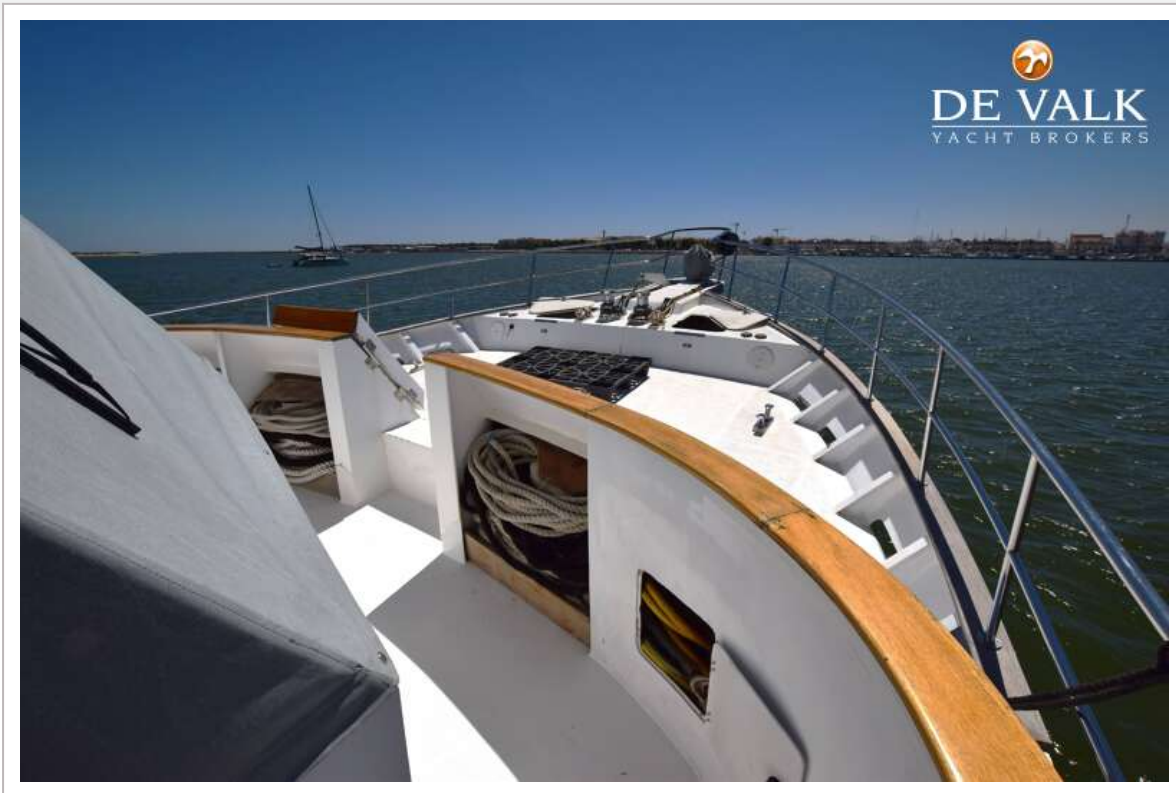




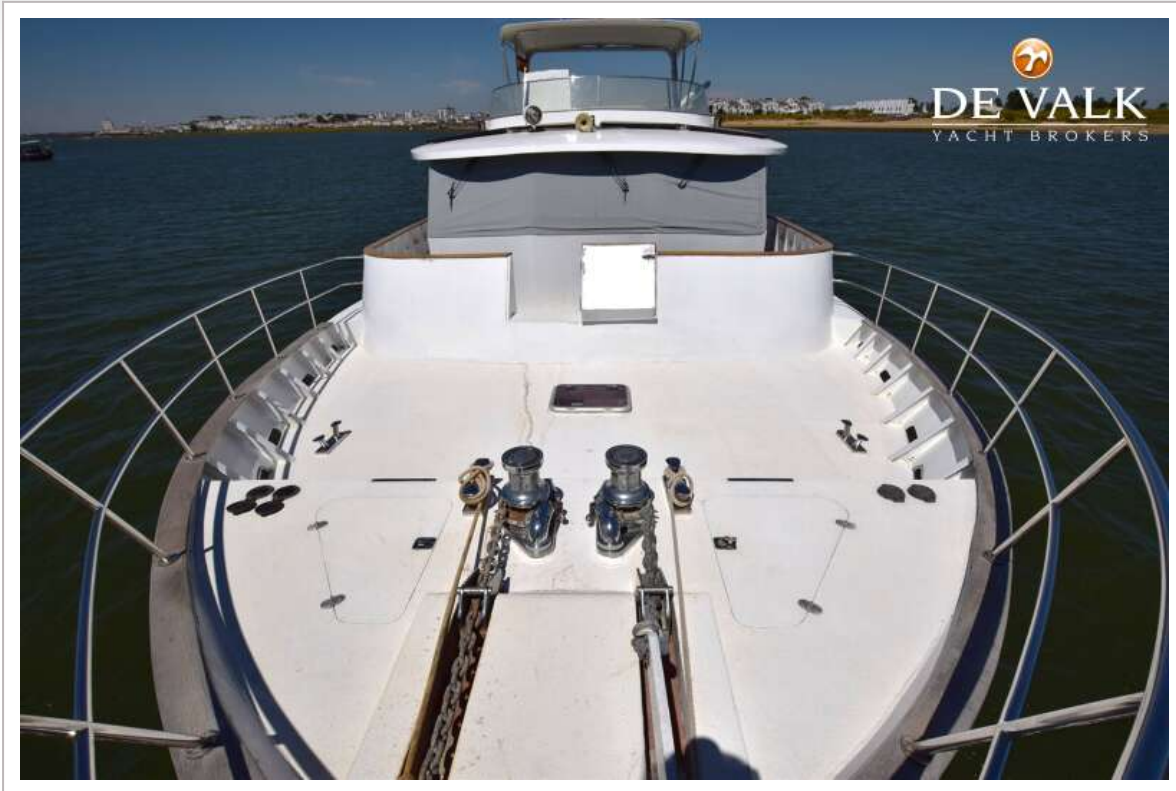
PACIFIC TRAWLERS 72





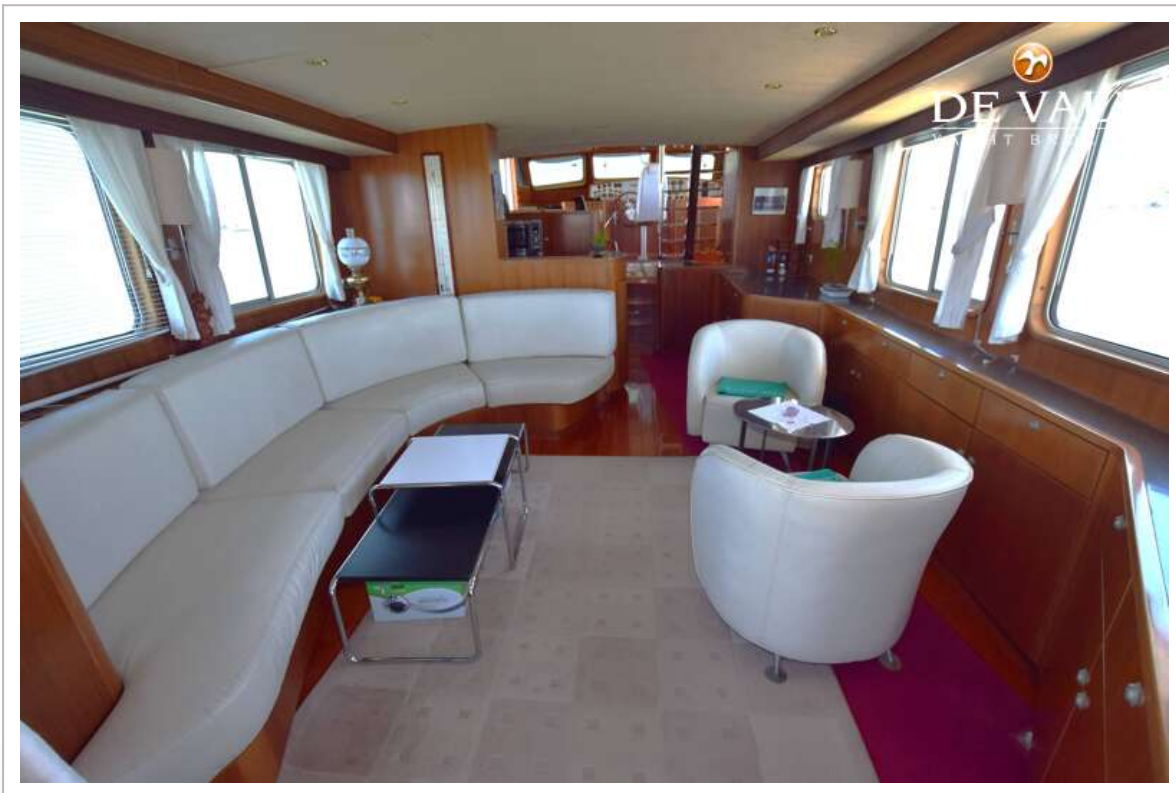


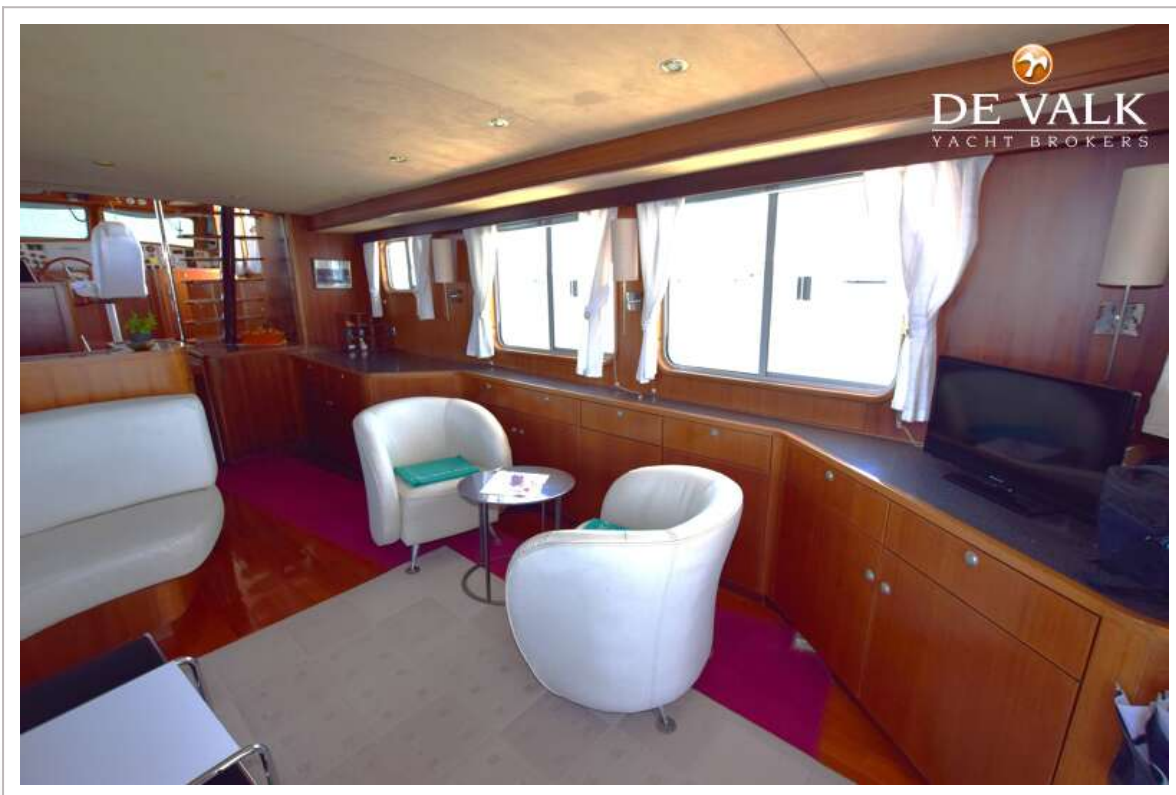
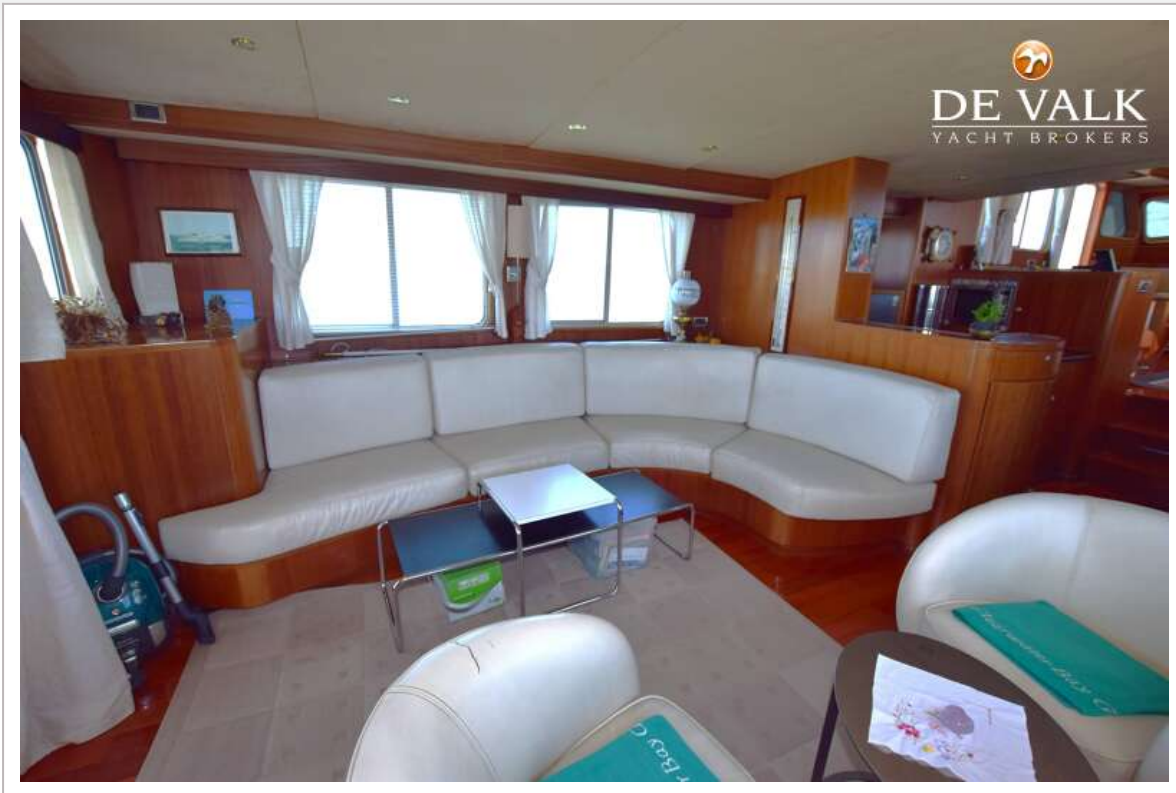
PACIFIC TRAWLERS 72



PACIFIC TRAWLERS 72



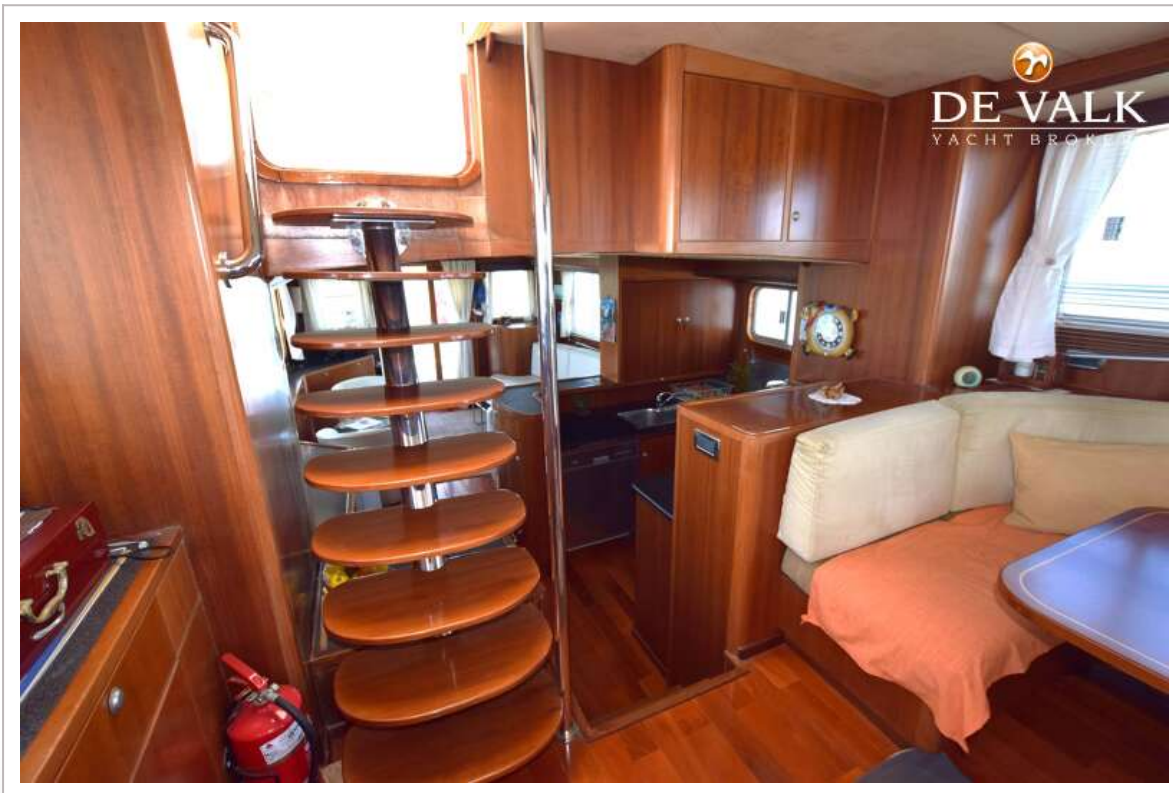




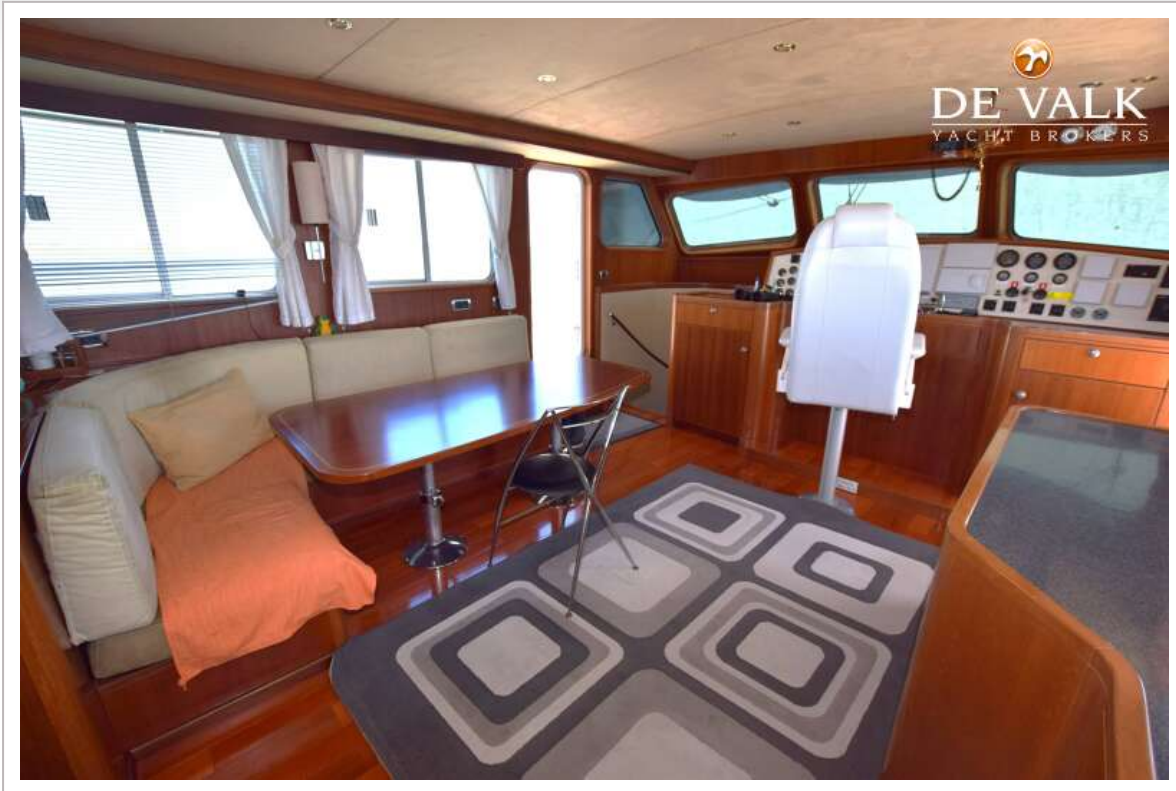
PACIFIC TRAWLERS 72



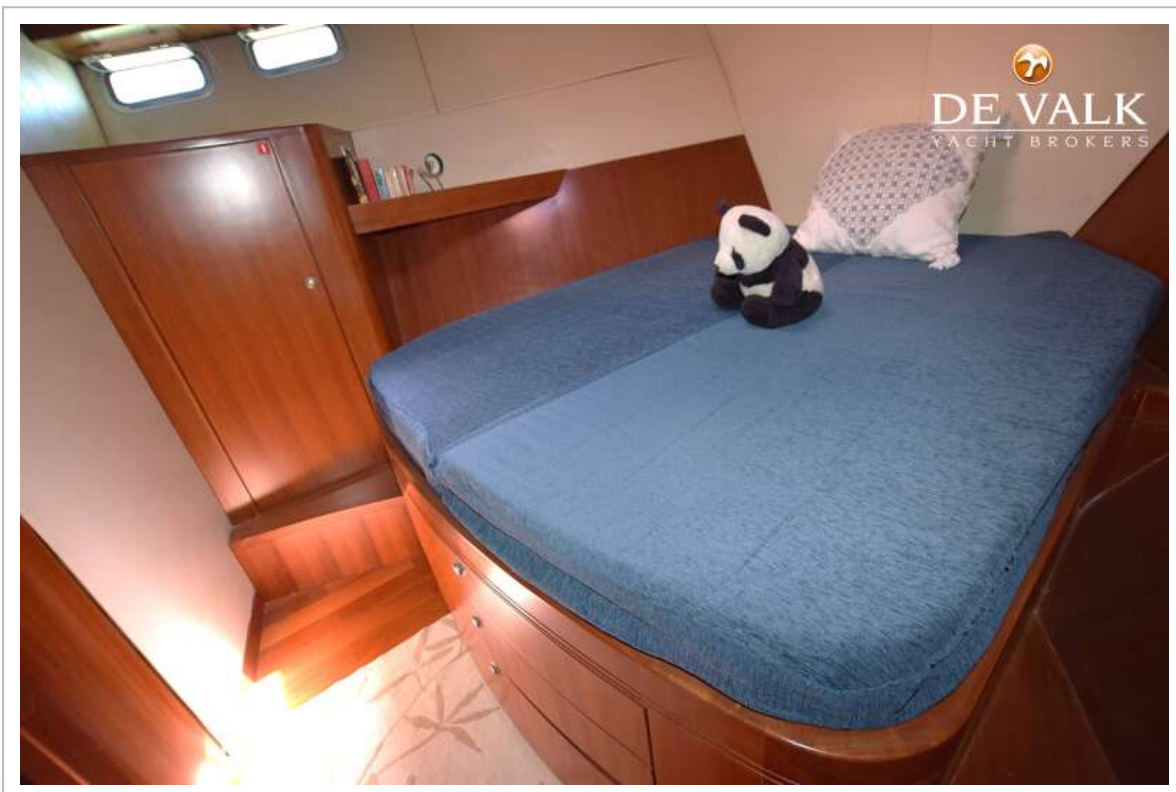
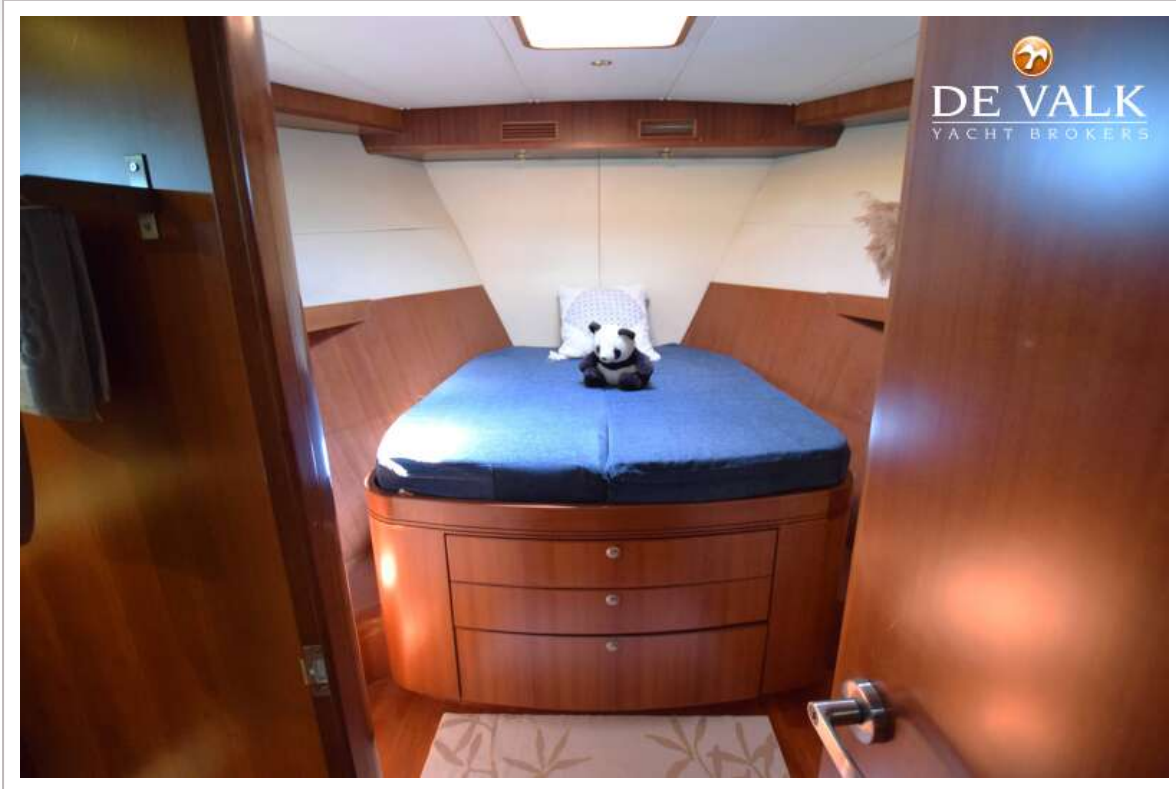
PACIFIC TRAWLERS 72

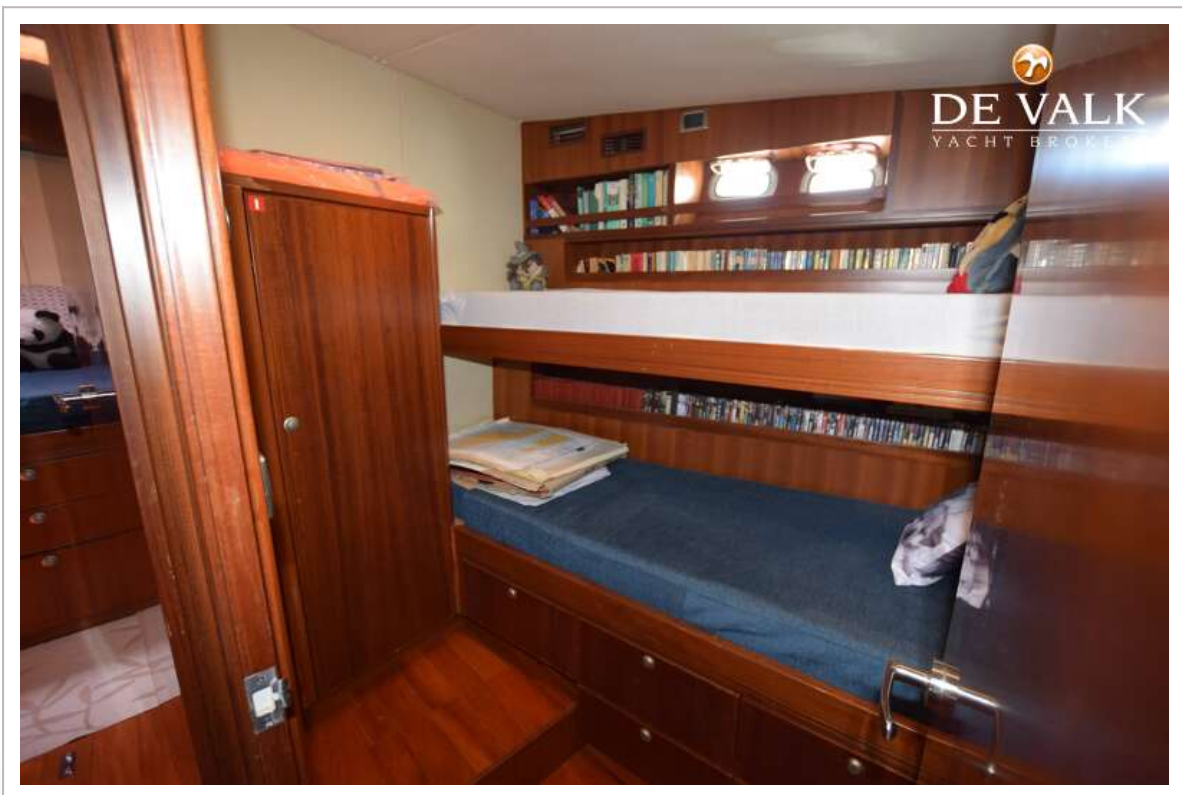


PACIFIC TRAWLERS 72



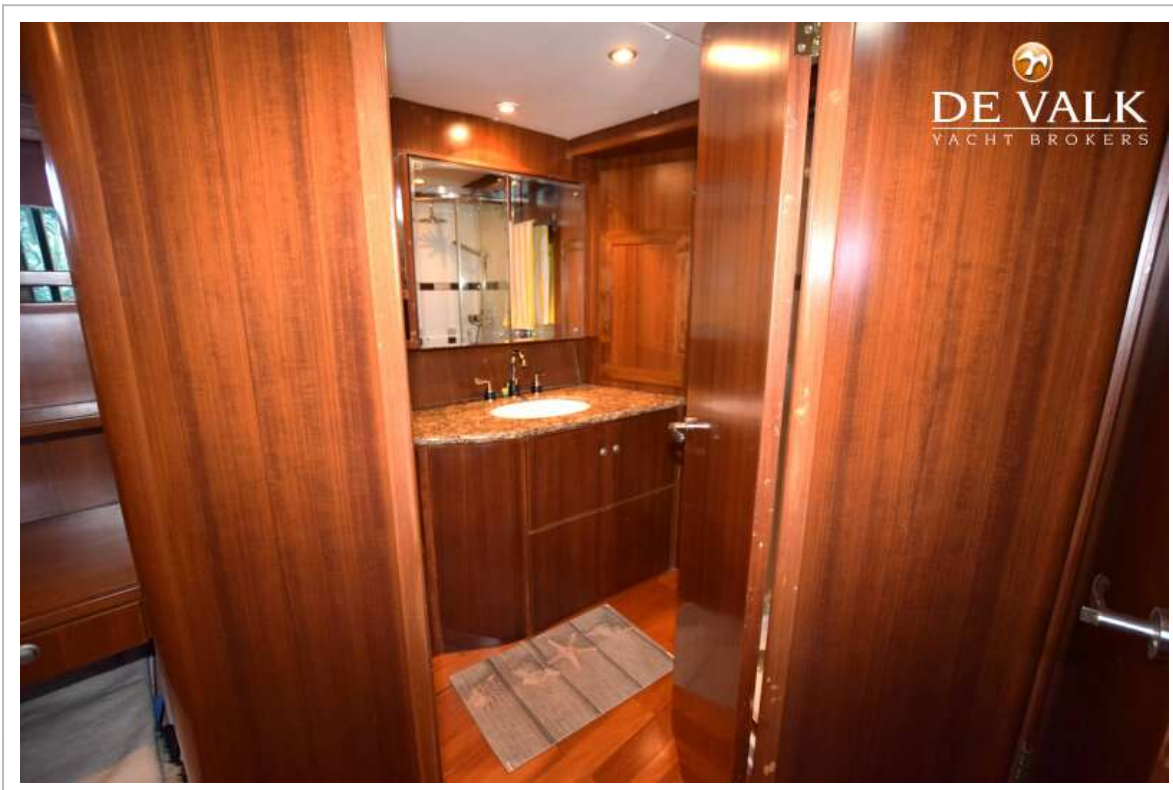
PACIFIC TRAWLERS 72

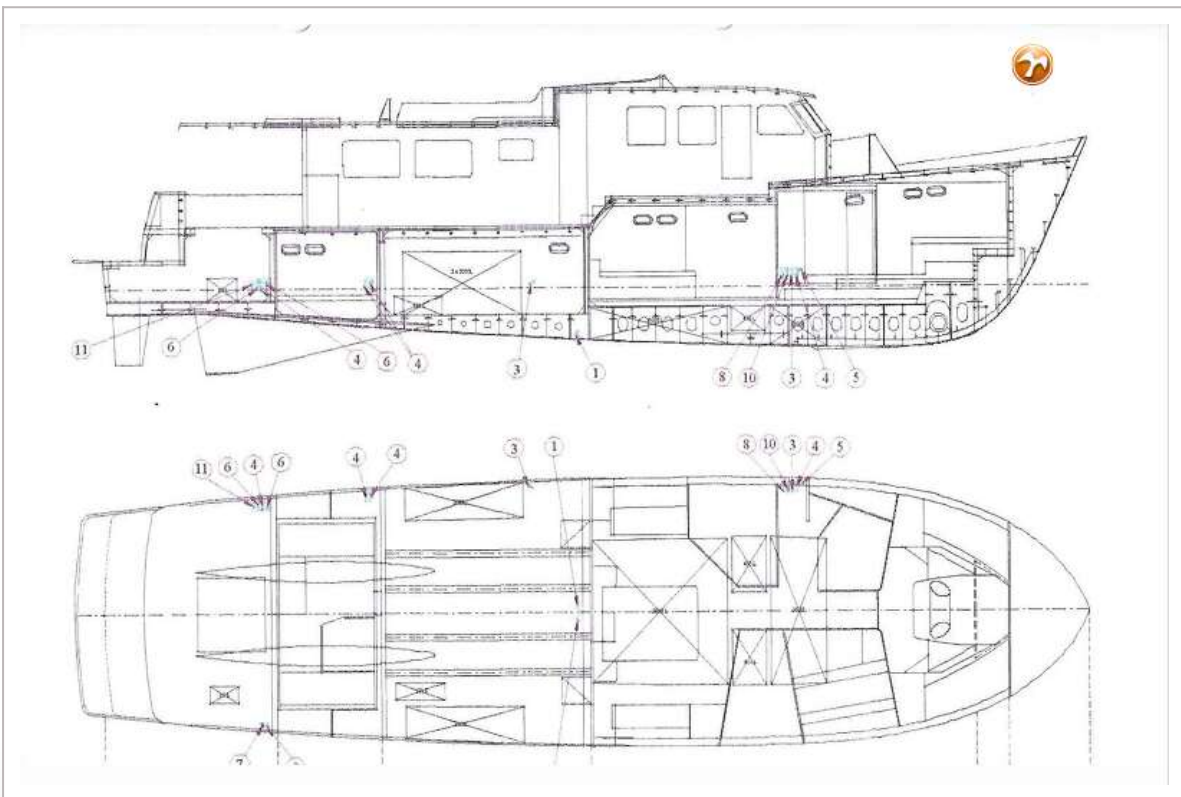






PACIFIC TRAWLERS 72





PACIFIC TRAWLERS 72

