



DE VALK  
YACHT BROKERS



## HANS CHRISTIAN 41T



DE VALK  
YACHT BROKERS

## BROKER'S COMMENTS

Every now and then you find a true gem. This Hans Christian 41T for sure is and we are excited about it. A yacht with true character, finished with solid teak and bronze fittings and in an impeccable condition. With her equipment and spacious interior she is ideal for long passages and living on board. The semi-performance keel makes her stable and comfortable, an ideal combination for "long distance sailing". We are selling this Hans Christian 41T in behalf of her 1st owner and is she's looking for an enthusiast who can appreciate tradition, quality and craftsmanship. Viewing by appointment.

*Sander van der Voorn*

## SPECIFICATIONS

<b>Dimensions</b>	12.40 x 4.00 x 1.95 (m)	<b>Builder</b>	Andersen Yachts LTD
<b>Built</b>	1998	<b>Cabins</b>	2
<b>Material</b>	GRP	<b>Berths</b>	4
<b>Engine(s)</b>	1 x Yanmar 4JH-HTE diesel	<b>Hp/Kw</b>	62.00 (hp), 45.57 (kw)
<b>Asking price</b>	sold (VAT )	<b>Lying</b>	elsewhere / Not at sales office

## CONTACT

<b>Sales office</b>	De Valk Monnickendam B.V.	<b>Telephone</b>	+31 (0)299 65 63 50
<b>Address</b>	Hoogedijk 6 1145 PM Katwoude NL	<b>E-mail</b>	monnickendam@devalk.nl

## DISCLAIMER

These particulars are given in good faith as supplied but cannot be guaranteed.



## GENERAL

Model	HANS CHRISTIAN 41T
Type	sailing yacht
LOA (m)	12,40
LWL (m)	11,20
Beam (m)	4,00
Draft (m)	1,95
Air draft (m)	17,90
Headroom (m)	2,00
Year built	1998
Launched	Commissioned 1999 1998
Builder	Andersen Yachts LTD
Country	Thailand
Designer	Scott Sprague
Displacement (t)	16,1
Ballast (tonnes)	5.529
CE norm	NA
Hull material	GRP
Hull colour	off-white
Hull shape	S-bilged
Keel type	long keel *semi
Superstructure material	GRP Off-white
Superstructure (mm)	15
Deck plate thickness (mm)	25
Rubbing strake	stainless steel **
Deck material	GRP
Deck finish	teak
Cockpit deck finish	teak
Dorades	4 x
Window frame	Bronze
Window material	glass



Deckhatch	3 x Stainless steel hatch 1 teak wood butterfly skylight hatch
Portholes	Bronze
Insulation	airfoil
Fuel tank (litre)	GRP 260 + 160 = 420
Level indicator (fuel tank)	yes
Freshwater tank (litre)	GRP 360 + 250 = 610
Level indicator (freshwater)	yes
Blackwater tank (litre)	GRP +/- 94
Blackwater tank extraction	deck extraction + pump
Wheel steering	cable steering **
Emergency tiller	S/S with teak
Extra info	Performance, encapsulated keel *
Extra info	Rubber strake Teak with Stainless Steel, Teak steering wheel **
Extra info	3 teak storage boxes on deck one with gas bun

## ACCOMMODATION

Cabins	2
Berths	4
Interior	teak Solid
Layout	2 cabins, 2 double berths, saloon, kitchen, navigation station, toilet aft with washbasin, bathroom in front with douche and toilet. Solid teak interior, upholstery in green marine-quality.
Floor	teak
Open cockpit	yes
Saloon	Salon featuring 'U' shaped settee with teak-table to port. Seat/berth to starboard. Lot of lockers and storage space
Headroom saloon (m)	2,00
Heating	diesel ducted hot air Eberspracher D5L
Navigation center	Starboard
Chart table	navigation centre with chart table, lockers en drawers
Aft Cabin	yes
Dining room	Salon



Opening door to cockpit	with stitch hatches
Galley	Gally to port featuring " frigomatic" with keelcooling template refrigerator, gas stove with 4 flames and oven. Blue / grey marble counterops with stainless steel sinks
Countertop	marble
Sink	stainless steel 2 x
Cooker	calor gas Force 10
Oven	yes
Fridge	1 fridge 280 liter with Frigomatic, 2e fridge 200 liter. (non Frigomatic installed)
Hot water system	220V + engine Boiler
Water pressure system	electrical
Manual and/or foot pump	Bronze manual pumps for fresh and outboard water
Owners cabin	double bed
Bed length (m)	2,05 x 1,60
Wardrobe	hanging and drawers
Bathroom	en suite
Toilet	en suite
Toilet system	manual Jabsco (2020)
Wash basin	at the toilet
Shower	en suite
Guest cabin 1	double bed
Bed length (m)	2,10 x 1,40
Wardrobe	hanging
Bathroom	en suite
Toilet	en suite
Toilet system	manual Jabsco (2020)
Wash basin	at the toilet
Extra info	heating outlet in all cabins
Extra info	yes

## MACHINERY



No of engines	1
Make	Yanmar
Type	4JH-HTE
HP	62
kW	45,57
Fuel	diesel
Year installed	1997
Maximum speed (kn)	8
Consumption (l/hr)	8
Engine hours	1243
Engine cooling system	freshwater heat exchanger
Drive	shaft
Shaft seal	yes
Engine controls	bowden cable
Gearbox	mechanical
Bowthruster	electric Sidepower 24V, 10 HP (2000)
Exhaust	watercooled
Propeller type	fixed
Propeller blades	3
Propeller shaft material	stainless steel *
Shaft lubrication	water
Manual bilge pump	yes
Electric bilge pump	yes
Electrical installation	12v/230v
Generator	silent separator Mastervolt 6Kw (2000)
Start battery	1 x dry strater battrey (new)
Service battery	3 x 140Ah gel batteries (new)
Generator battery	1 x new
Battery charger/inverter	Mastervolt combi 12v/1200
Shorepower	with cable
Extra info	Eart-leakage switch, additional battery bank with serial / parallel switch for bow thruster



Extra info

220 volt outlets in all cabins

Extra info

Propeller shaft bearing new 8

## NAVIGATION

Compass

with light on binnacle Bronze Ritchie Globelmaster

Depth sounder/log

Raymarine ST60 Tridata

Windset

Raymarine ST60 + close hold

Repeater

Raymarine ST60 multi 2 x

Autopilot

with remotecontrol Raymarine ST6000

Radar/GPS/plotter

with chart overlay Raymarine C80 CRC

Extra info

Raytheon Raystar GPS antenn at pushpit, Raytheon 4Kw  
Radome in mast, RR-Pacific Aerial (VHF, TV ect)

Extra info

Raytheon type 2 linear drive at quadrant ( autopilot)

## EQUIPMENT

Sprayhood

yes

Cockpit cover

connected to sprayhood, easy to remove

Bimini

yes

Cockpit table

yes

Bathing platform

yes

Boarding ladder

stainless steel

Anchor

CQR Plough 20 kg

Anchor chain

50 meter

Windlass

electrical Muir Cheetah HR2500

Sea railing

wire

Grab rail (superstructure)

teak

Railing side opening gates

yes

Pushpit

yes

Pulpit

yes

Life raft

container

Life raft (pers)

4



Last life raft survey	must be inspected
Lifebuoy	yes
Fenders	yes
Mooring lines	yes
Radio-cd player	yes
Extra info	covers for all hatches, windlass and pedestal

## RIGGING

Rigging	cutter
Standing rigging	wire
Brand mast	Brasker *
Material mast	aluminium
Spreaders	single spreader
Mainsail	+/- 45m2
Mainsail cover	yes
Cutterstay	yes
Staysail	club-footed, self tacking +/- 22m2
Yankee	Haase, RF furling, green collared UV-protection +/- 55m2
Primary sheet winch	1 x mainsheet 44 Bronze self tailing 2 x Lewmar 50 Bronze self tailing
Secondary sheet winch	staysail 2 x Lewmar 16 Bronze self tailing
Halyard winches	2 x lewmar 40 Bronze self Tailing
Reefing winch	1 x Lewmar 50 Bronze self tailing Electric, 1 x lewmar 30 bronze self tailing on mast
Multifunctional winches	
Extra info	white powder coating * Mast

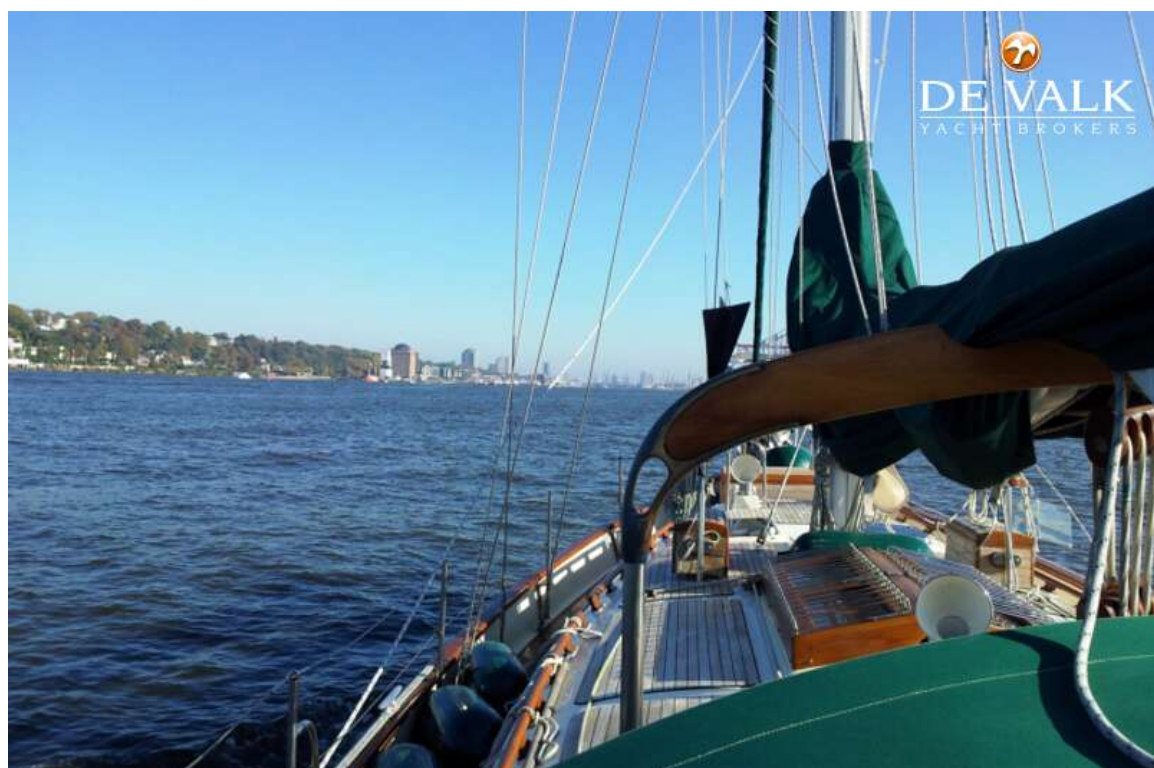
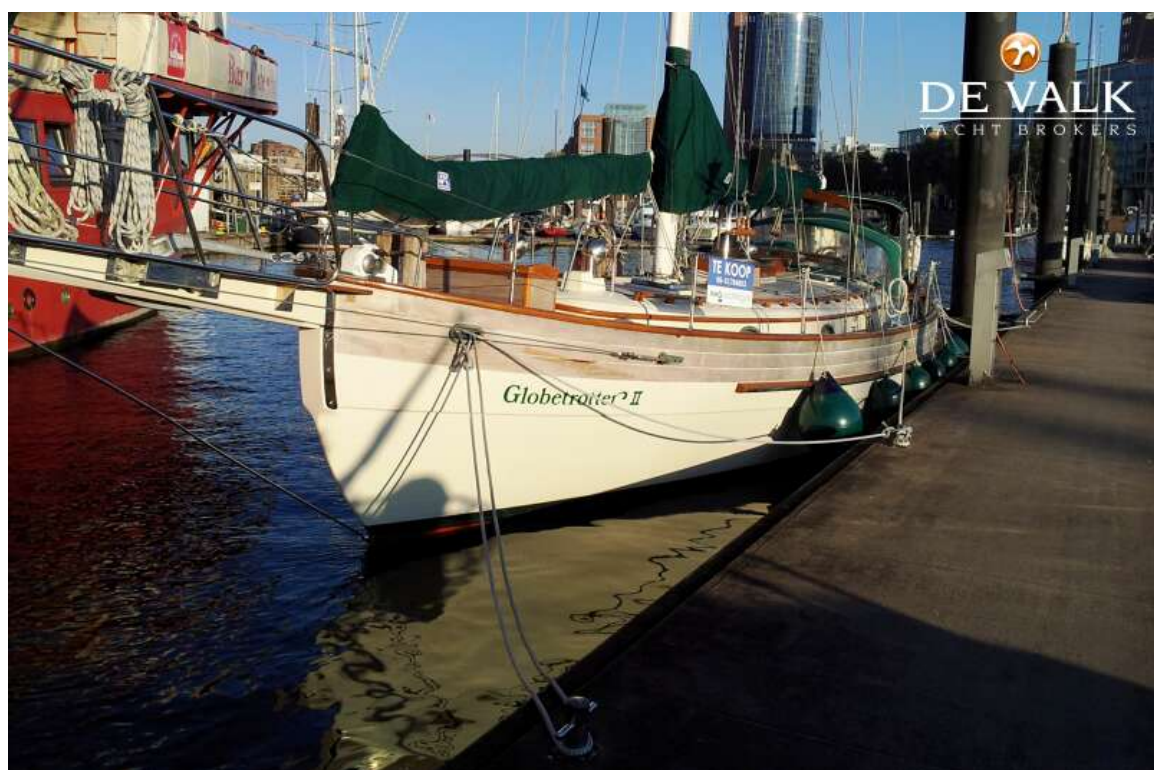




# HANS CHRISTIAN 41T



# HANS CHRISTIAN 41T





# HANS CHRISTIAN 41T

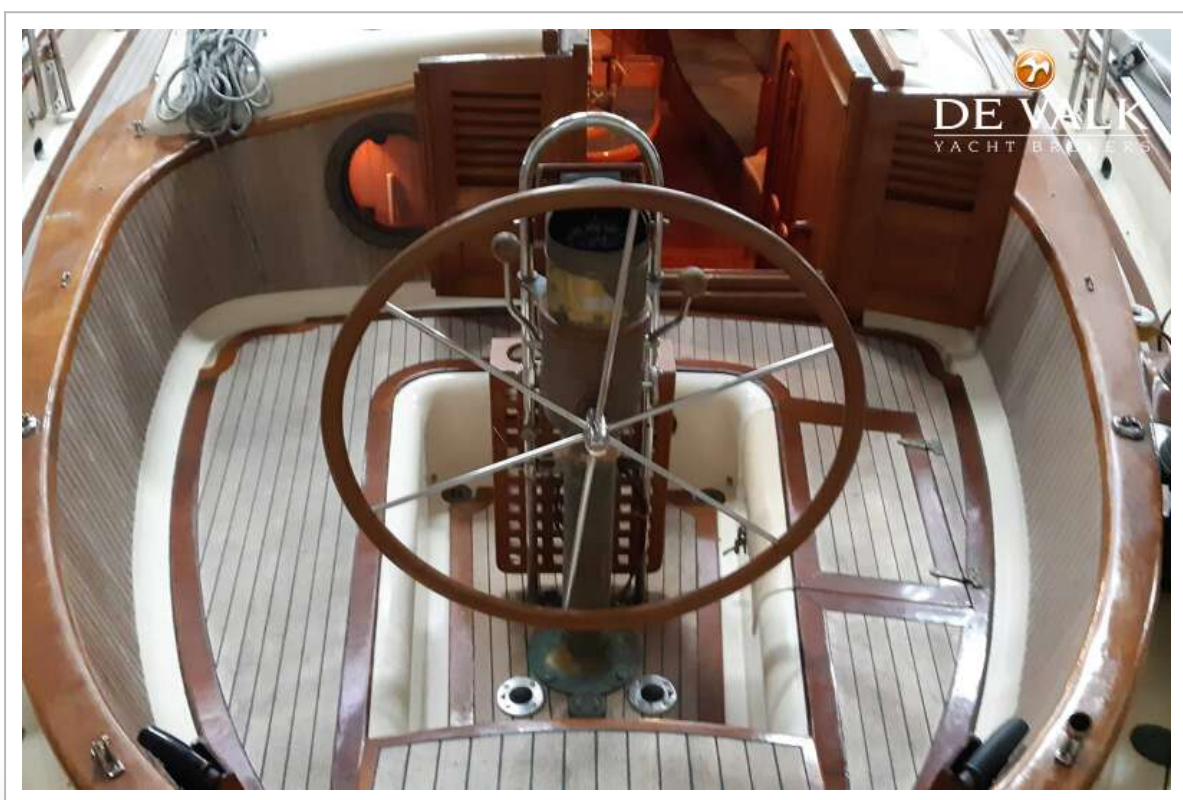
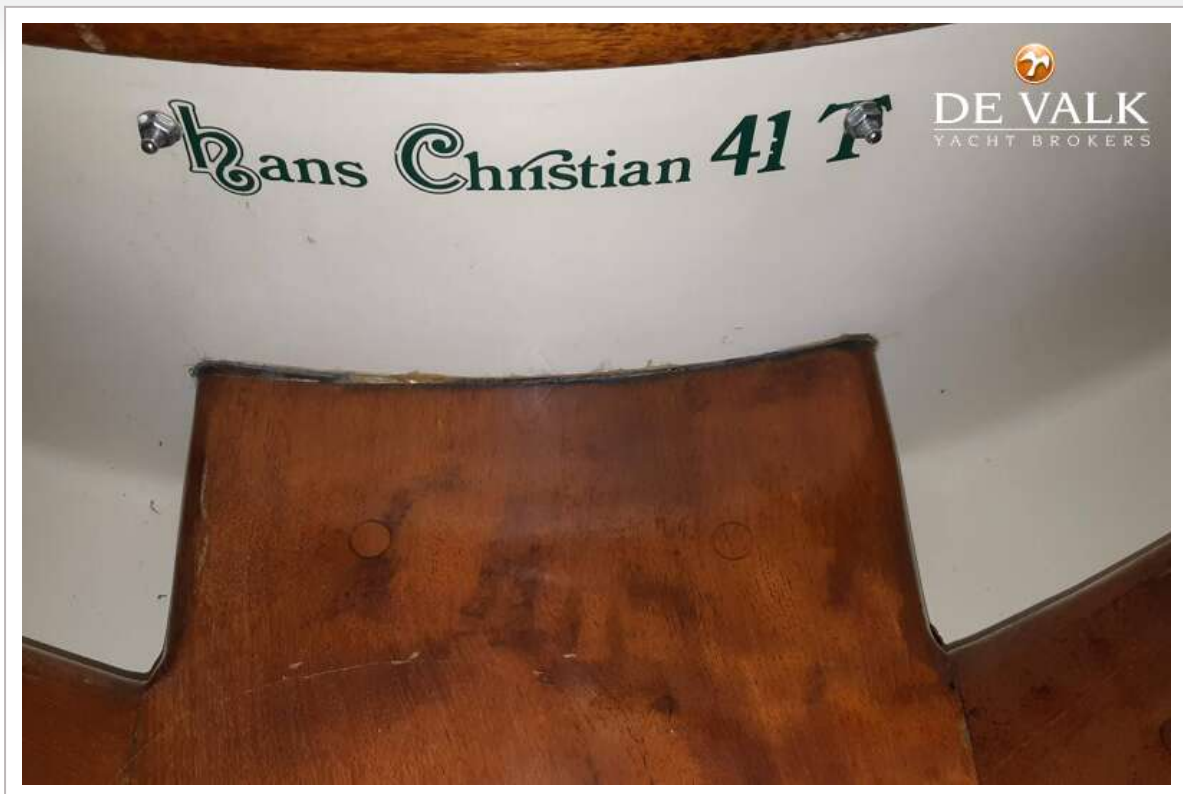


# HANS CHRISTIAN 41T

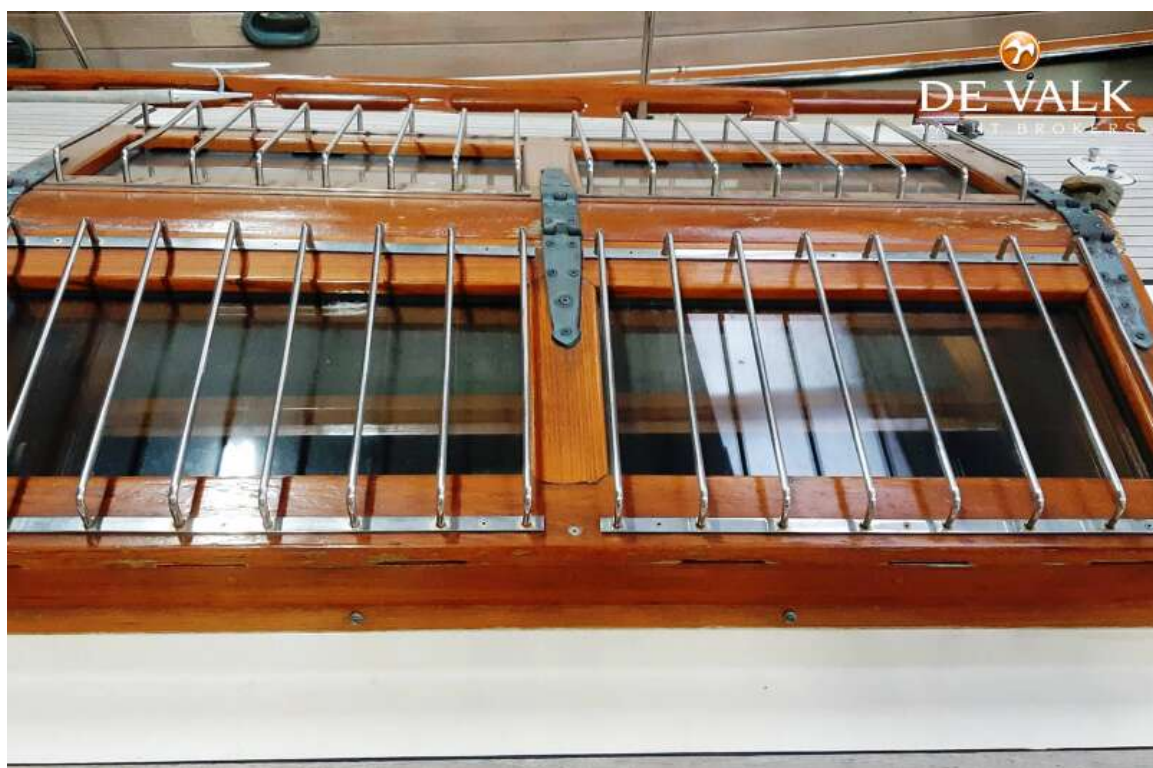




# HANS CHRISTIAN 41T

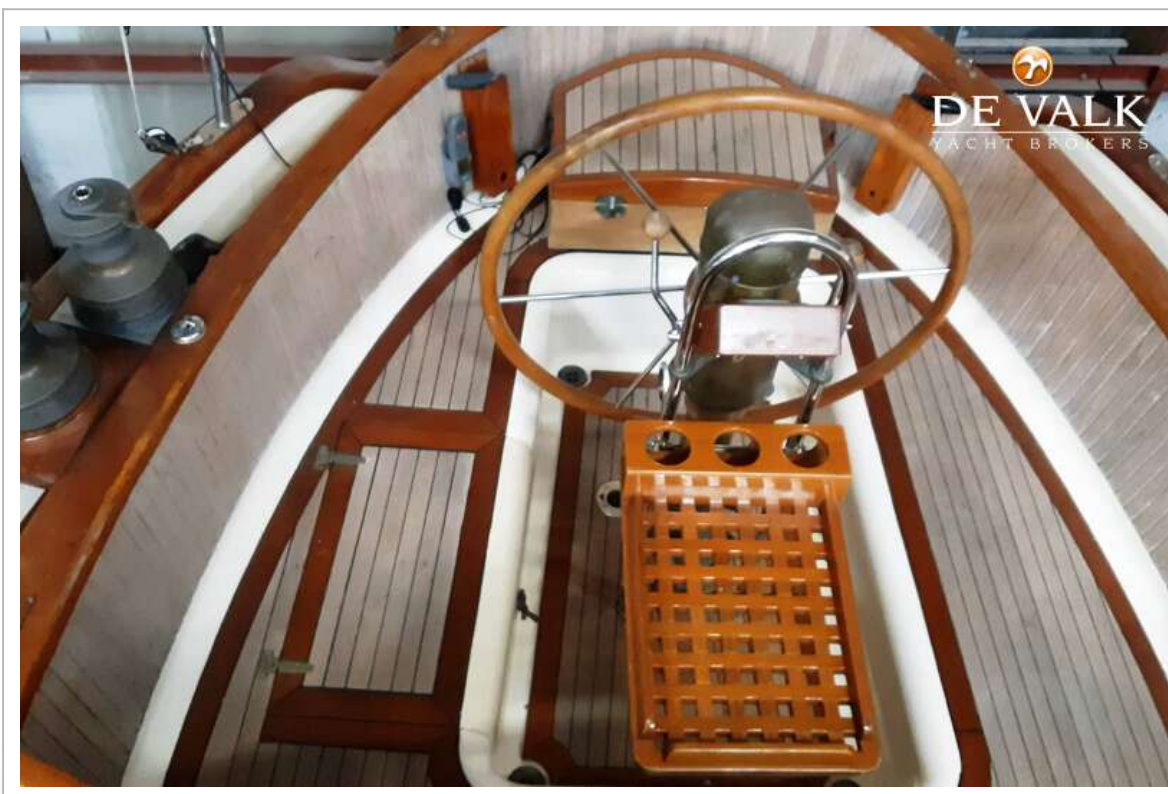
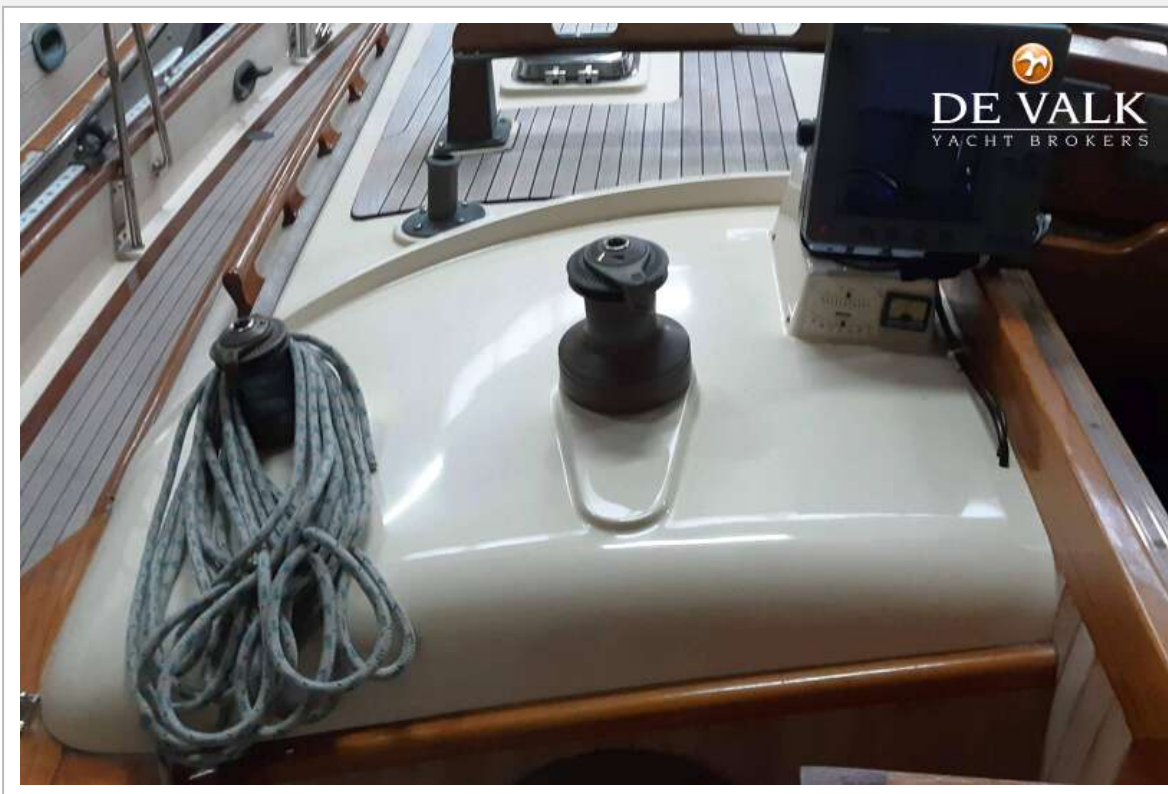


# HANS CHRISTIAN 41T

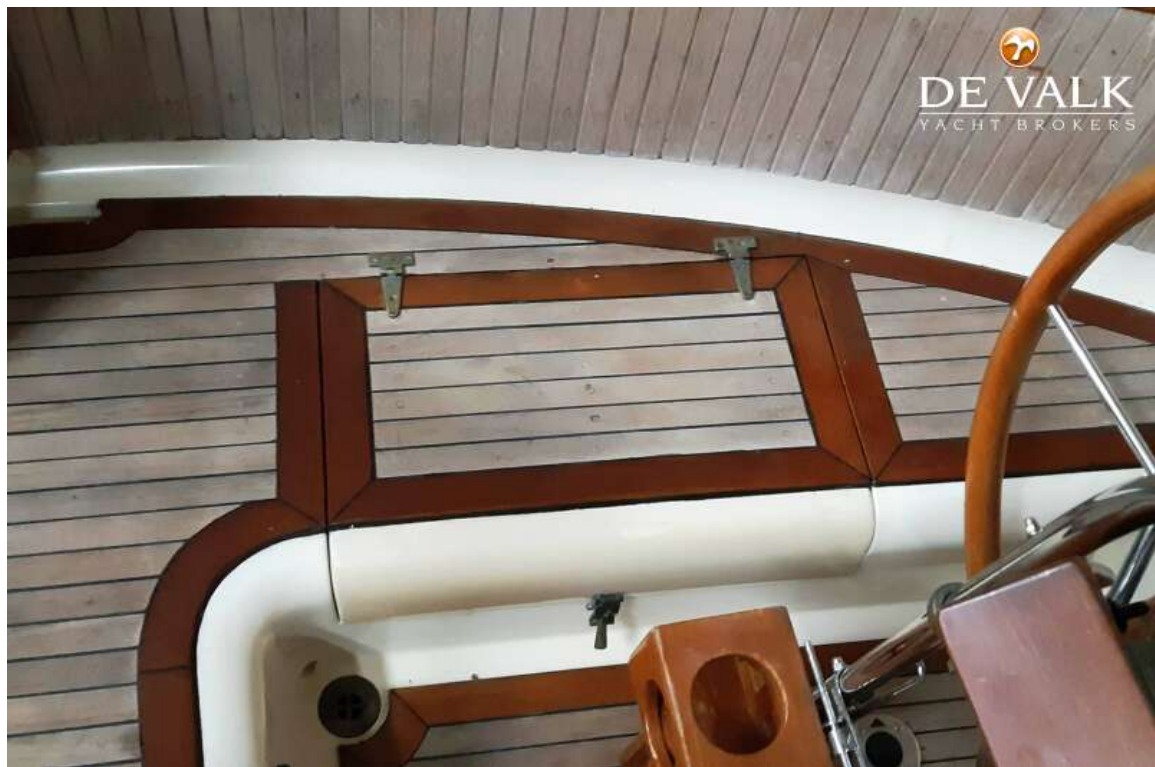




# HANS CHRISTIAN 41T



# HANS CHRISTIAN 41T





# HANS CHRISTIAN 41T

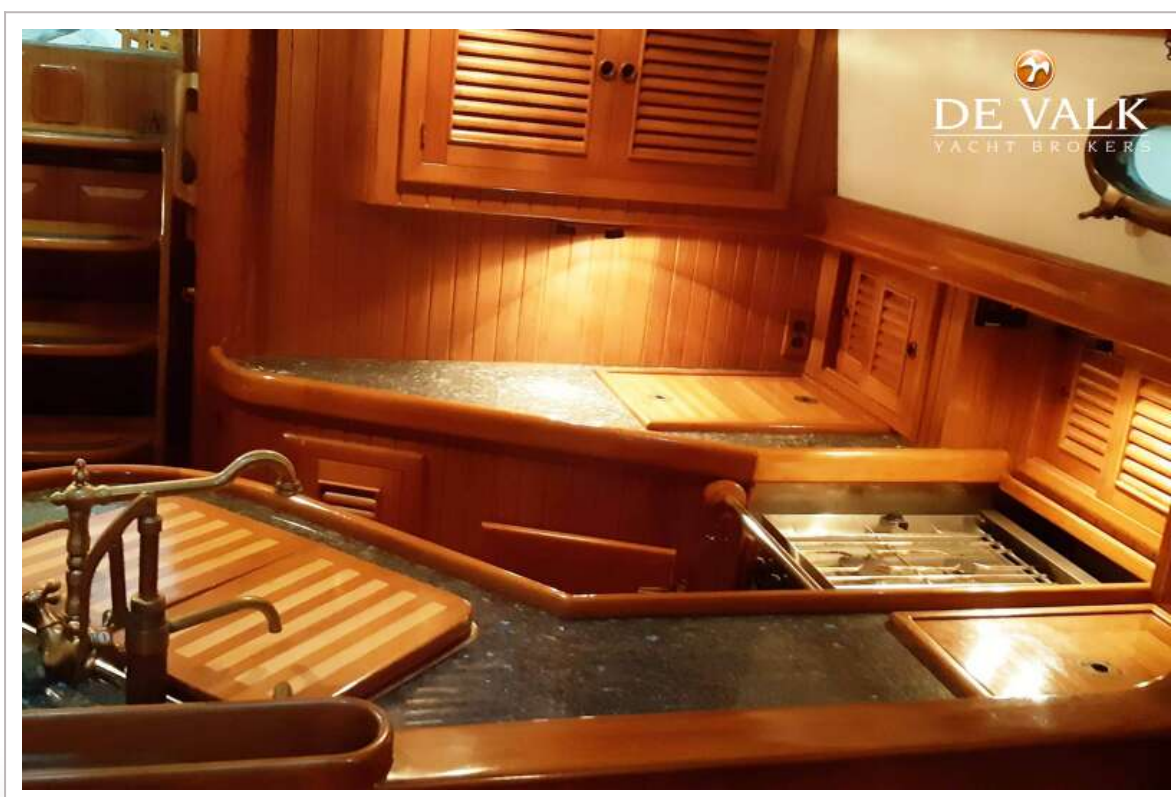
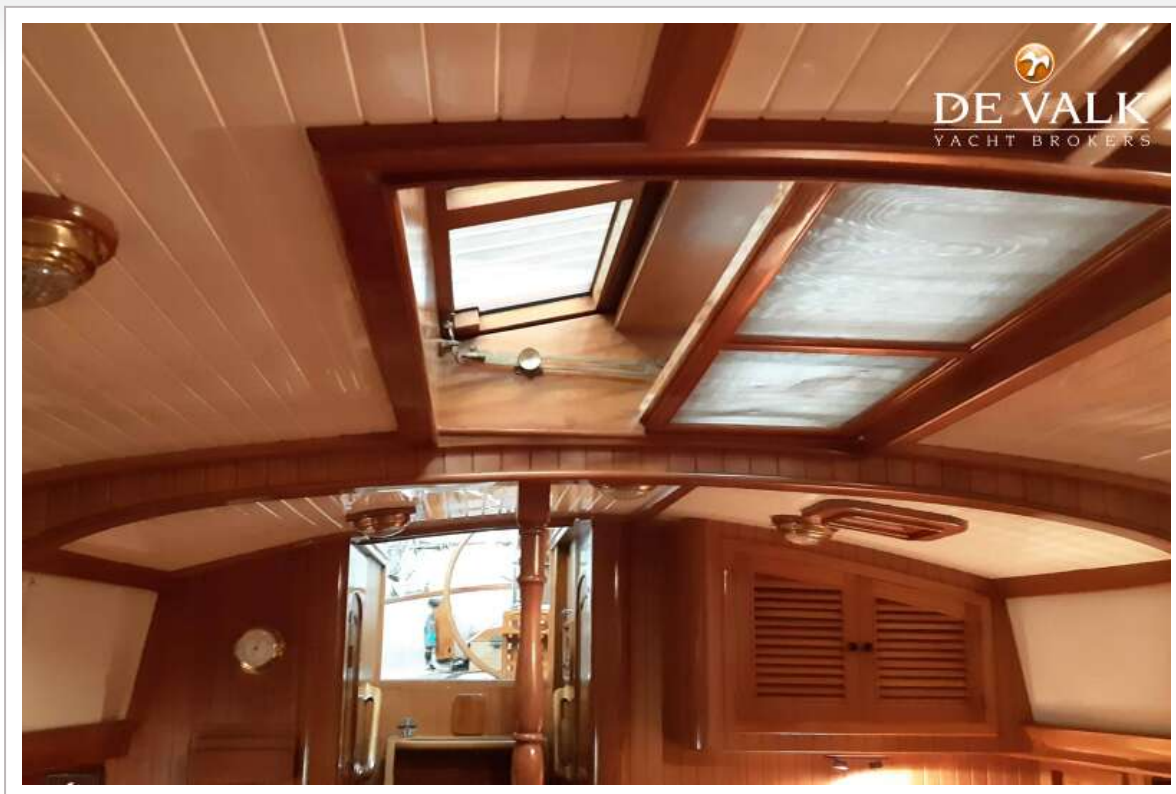


# HANS CHRISTIAN 41T

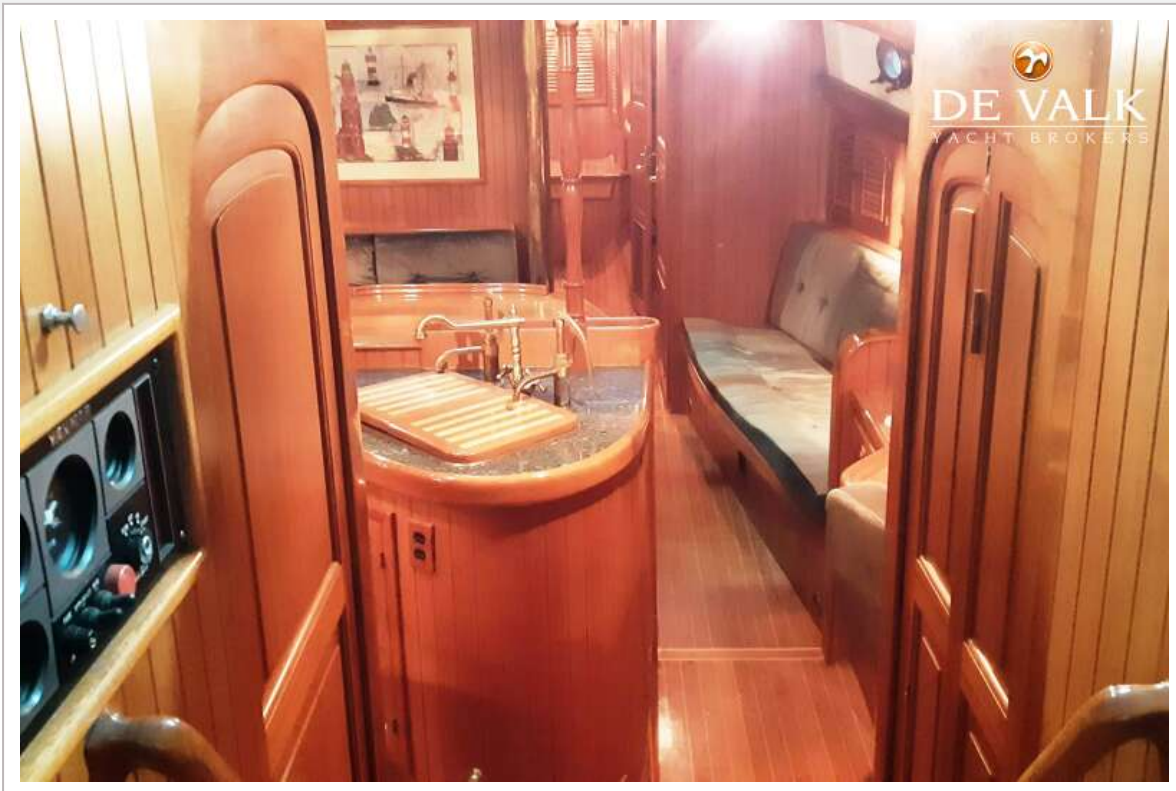




# HANS CHRISTIAN 41T

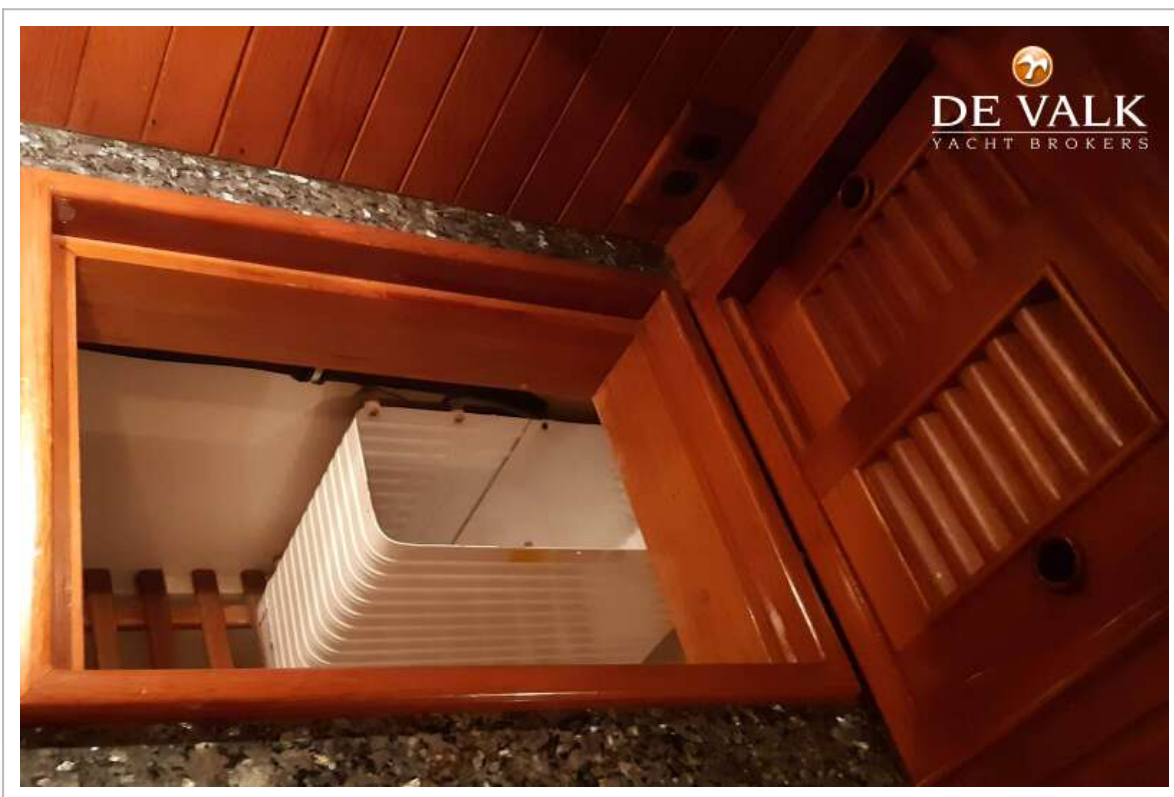
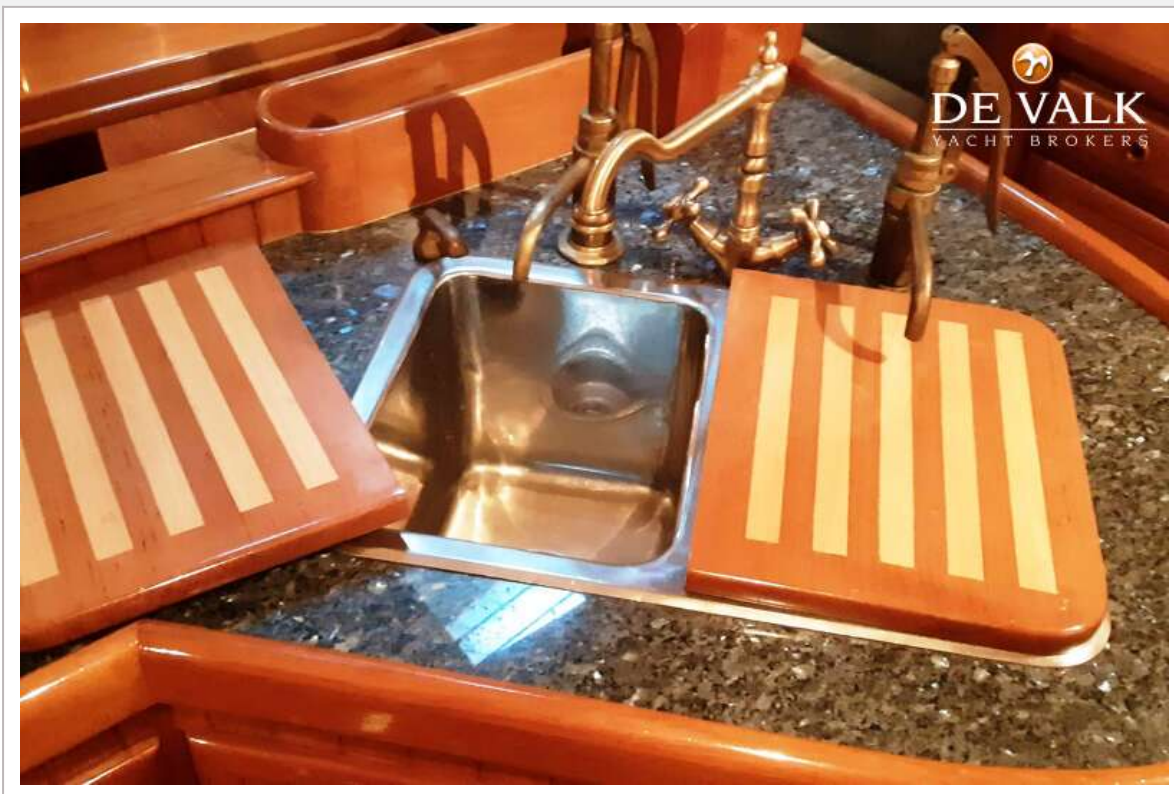


# HANS CHRISTIAN 41T

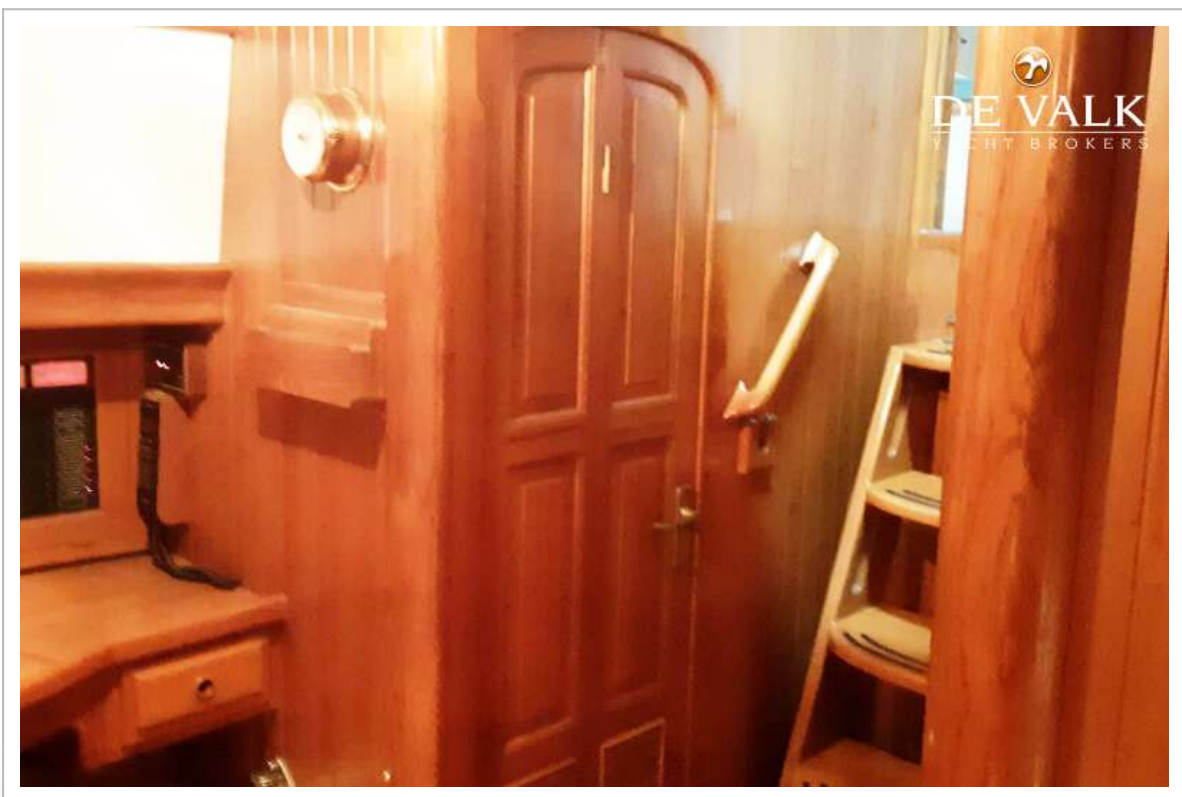
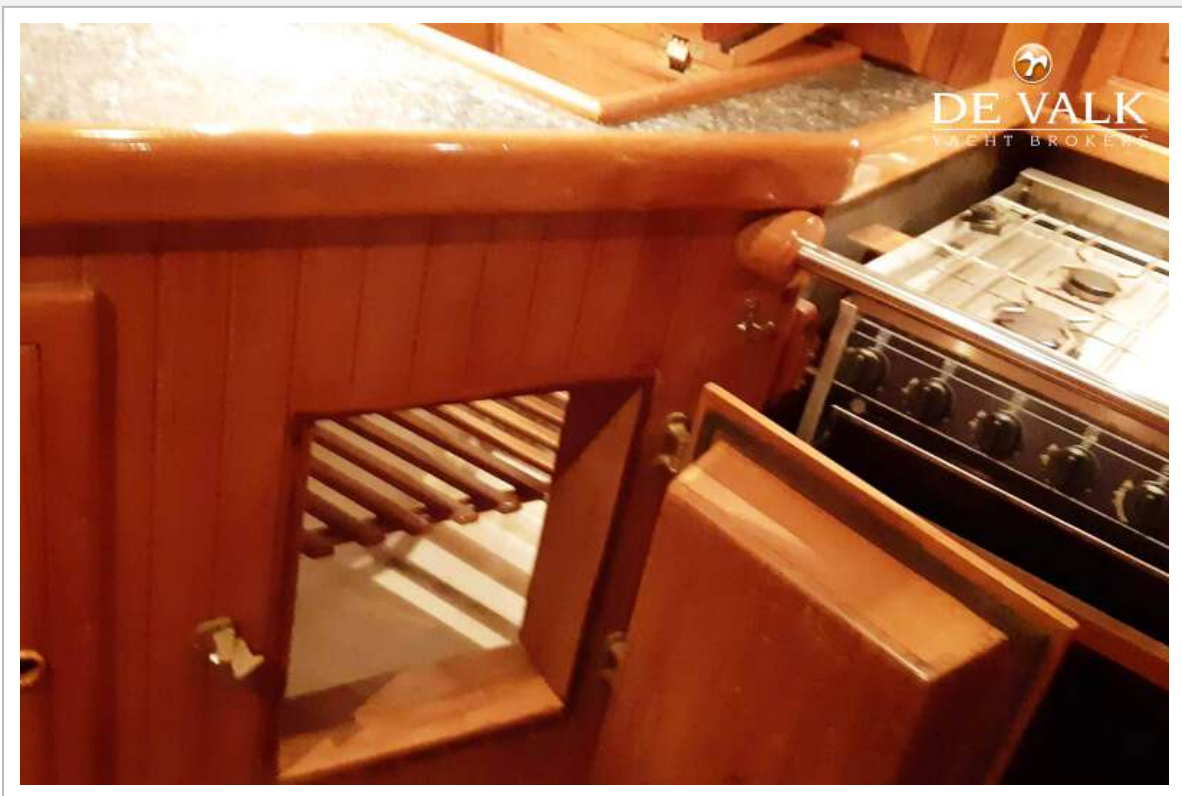




# HANS CHRISTIAN 41T

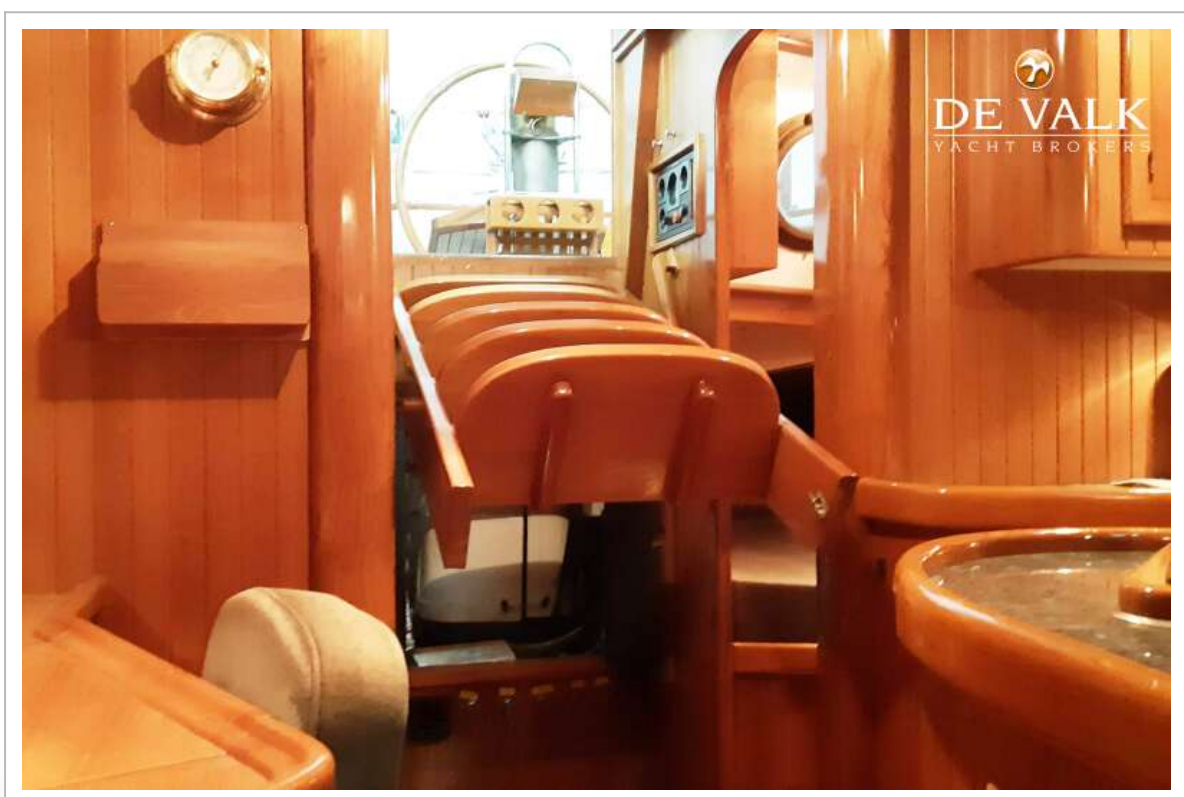
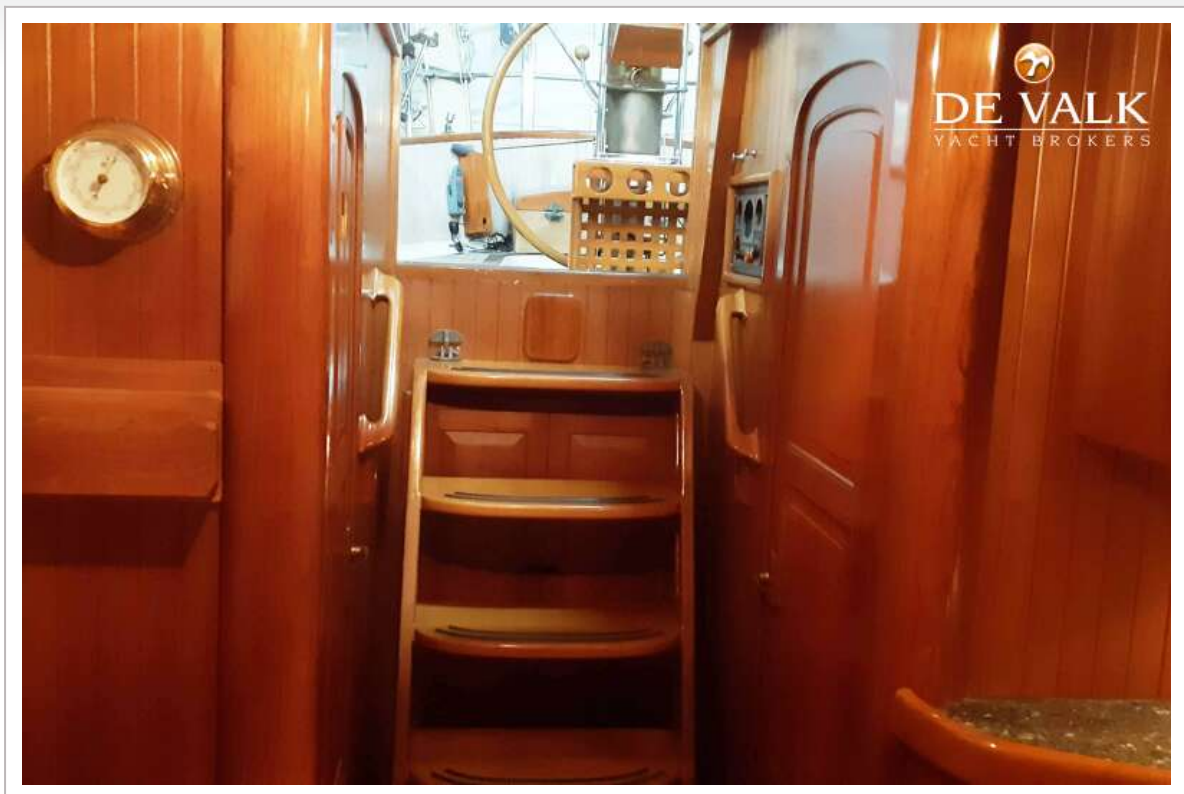


# HANS CHRISTIAN 41T

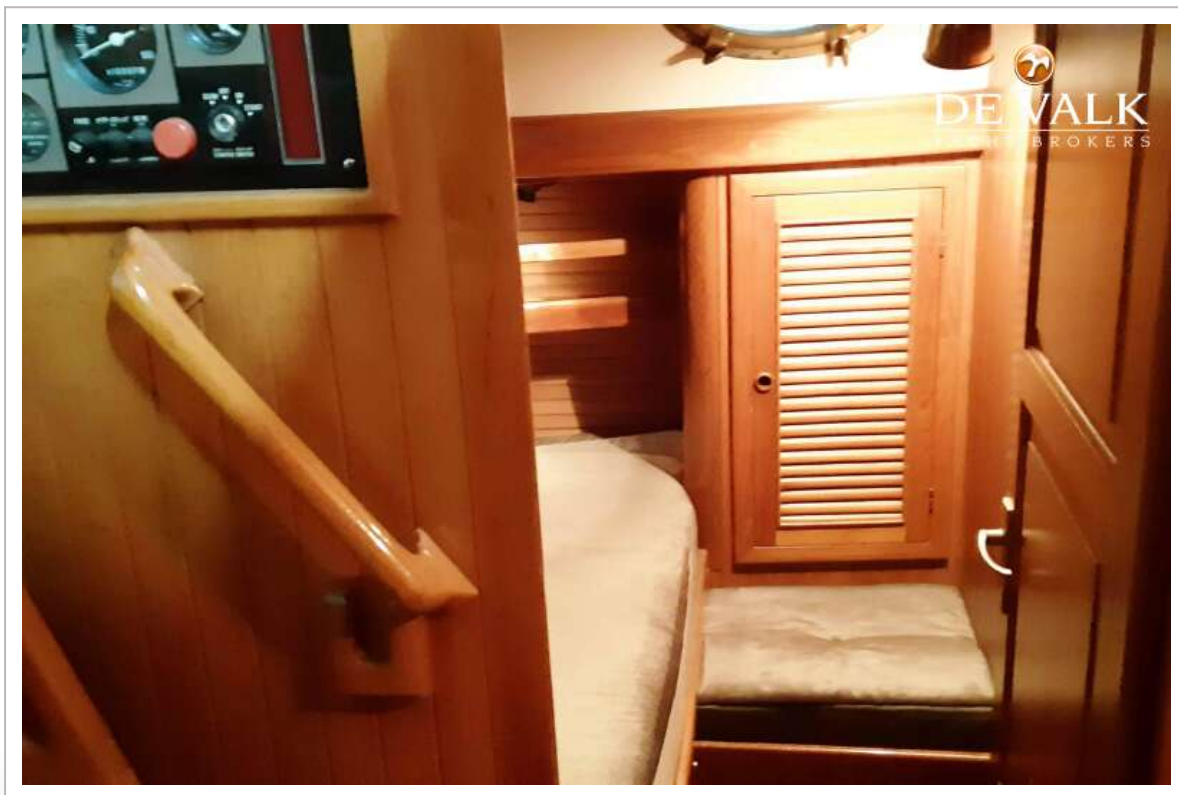
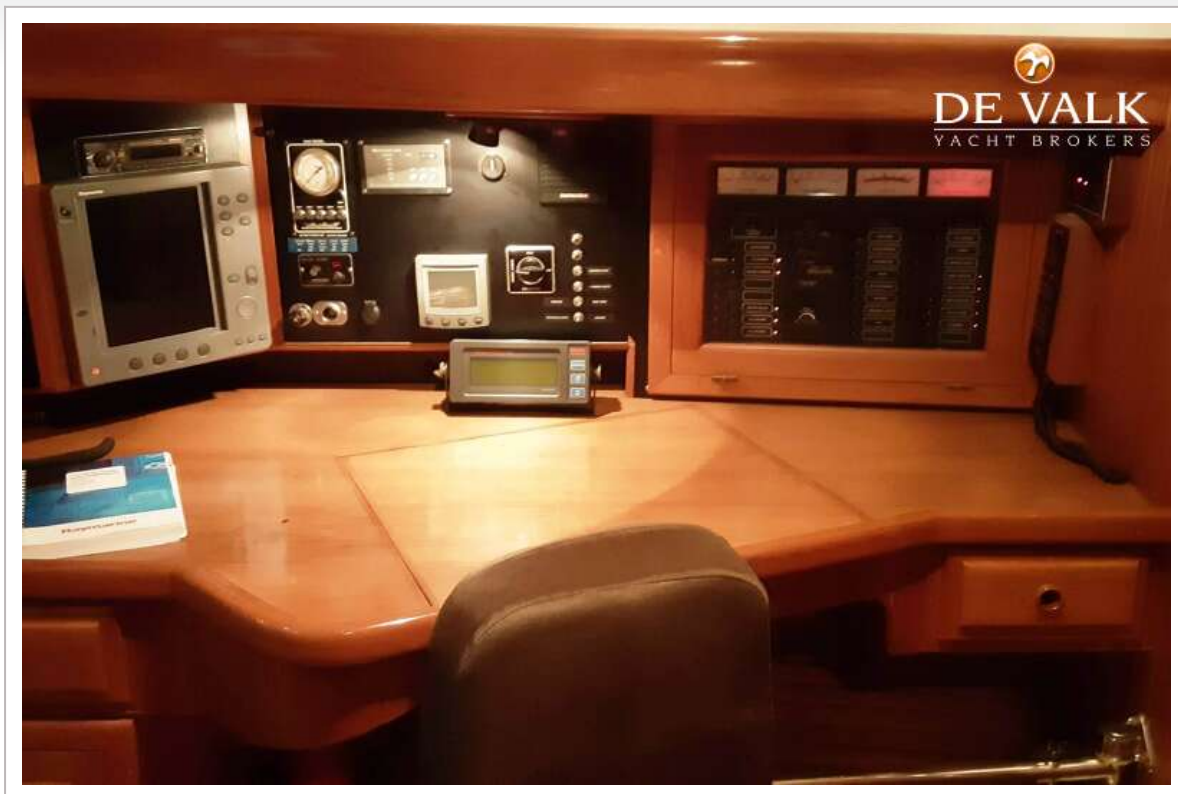




# HANS CHRISTIAN 41T

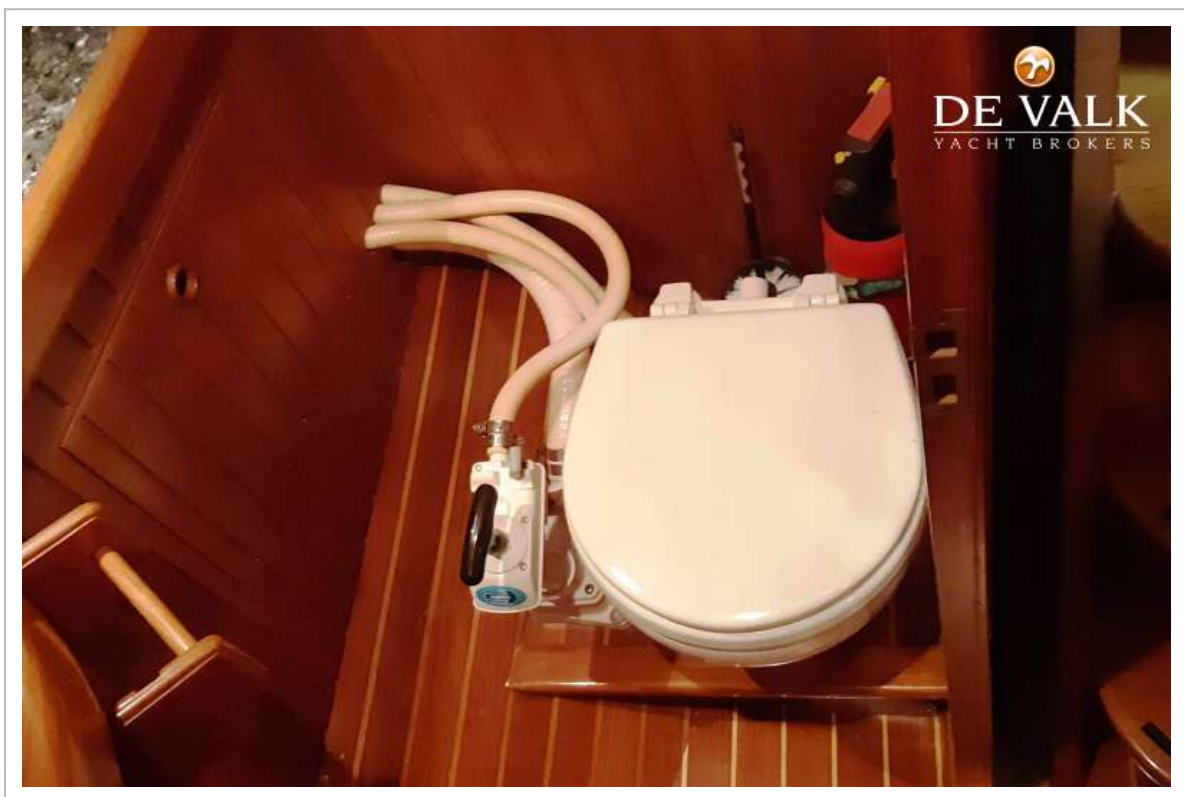
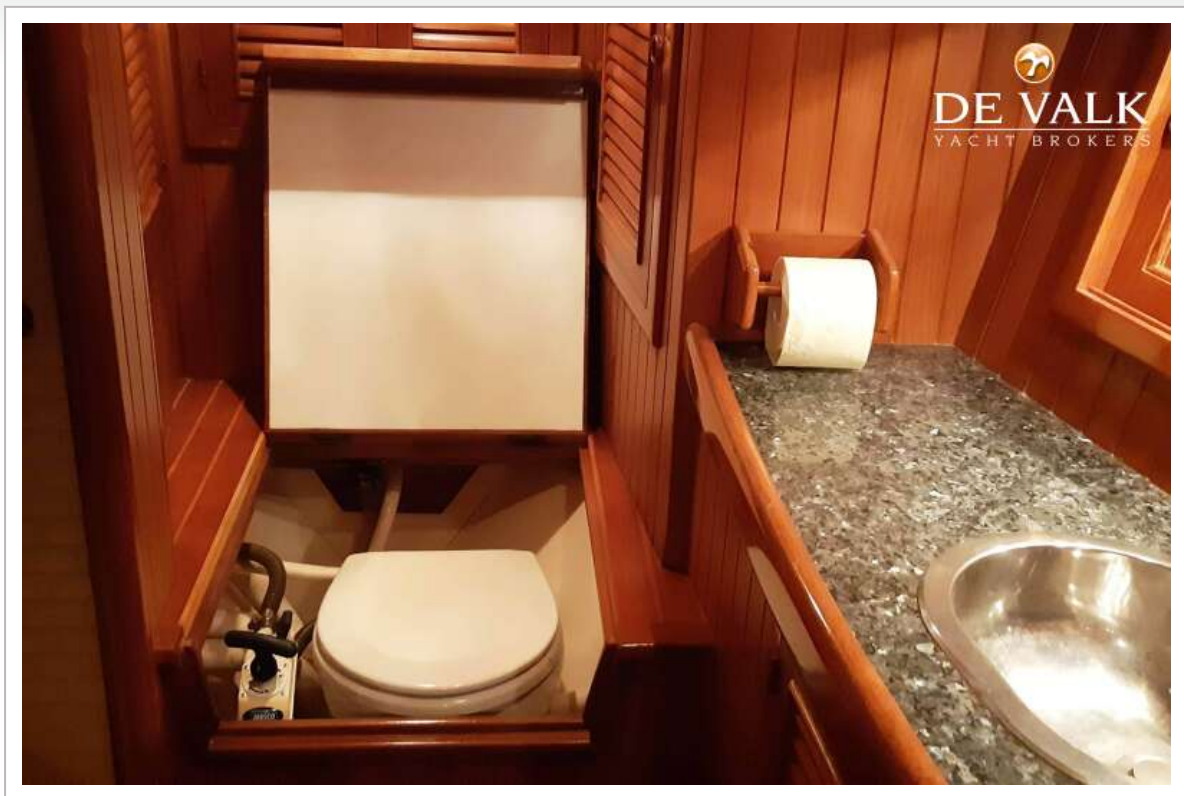


# HANS CHRISTIAN 41T

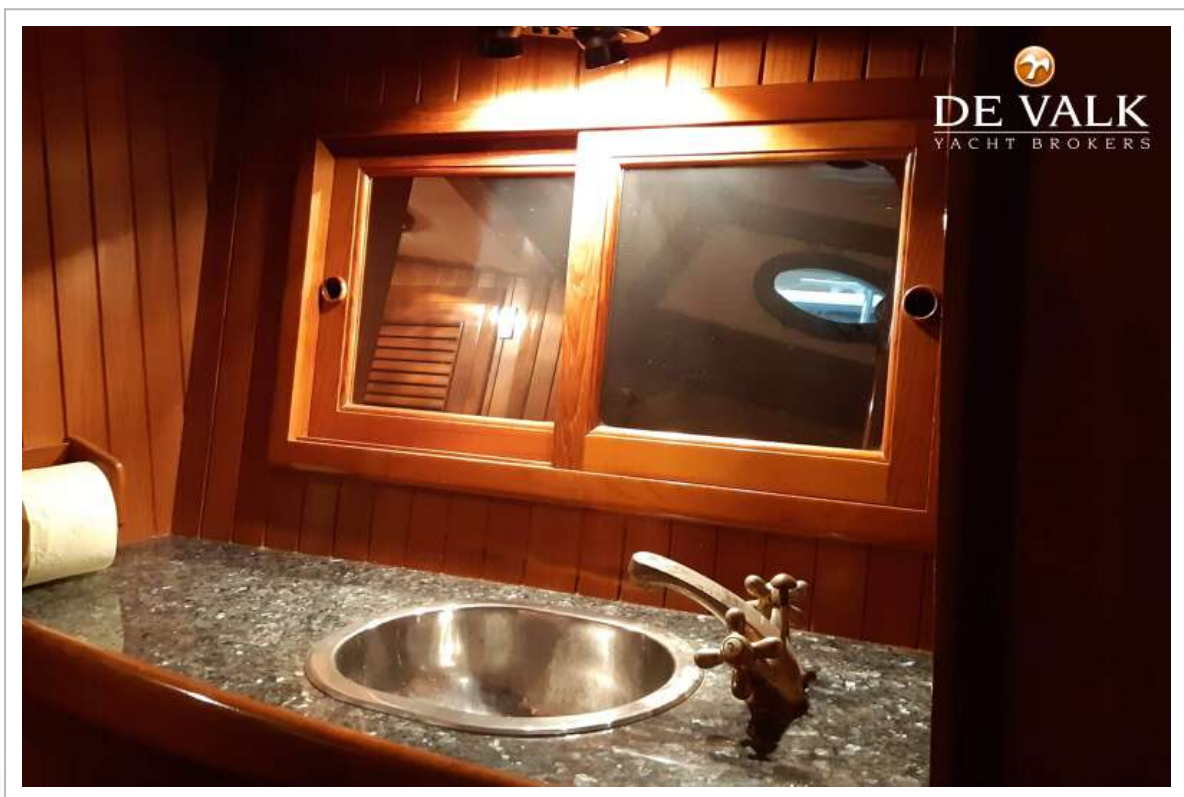
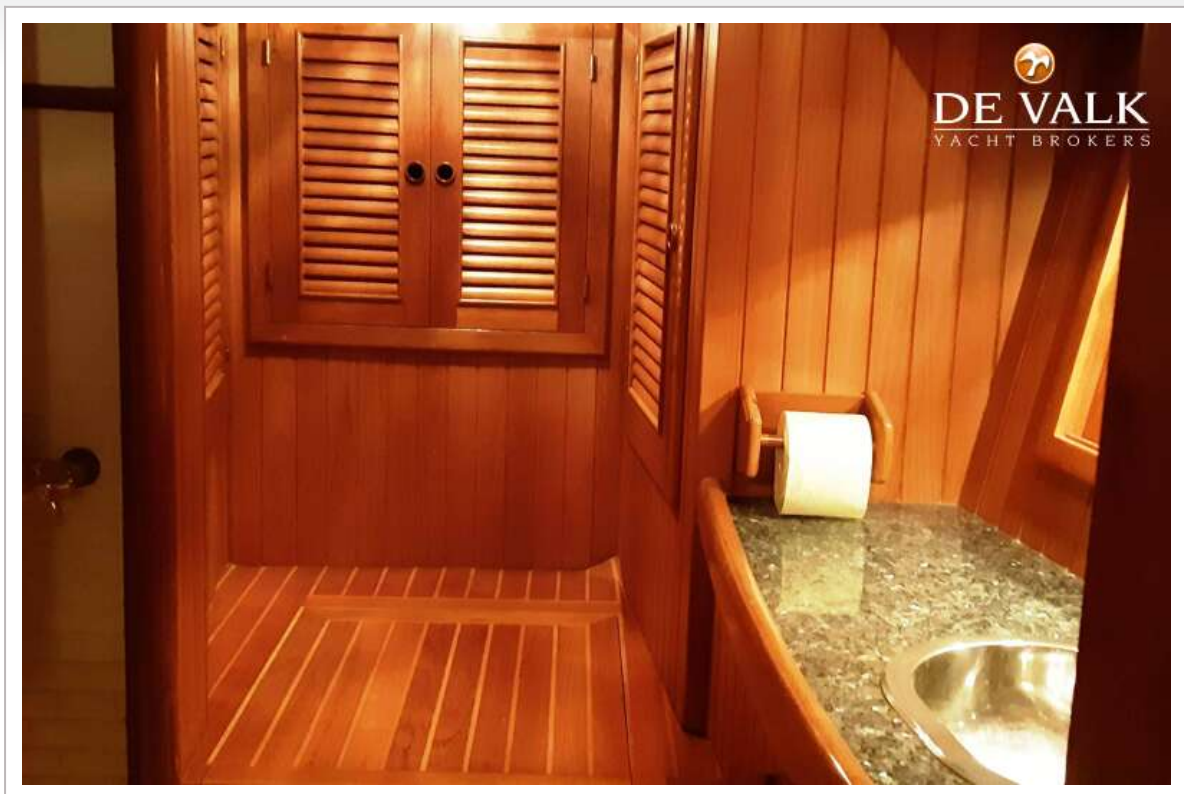




# HANS CHRISTIAN 41T



# HANS CHRISTIAN 41T





# HANS CHRISTIAN 41T

