



PRINCESS 61 FLYBRIDGE

PRINCESS 61 FLYBRIDGE

BROKER'S COMMENTS

This Princess 61 can truly be described as a unique example. The current second owner has done everything possible to maintain the yacht in like-new condition. Absolutely everything on board is up to date and, where necessary, has been renewed to give the yacht the appearance of having just left the shipyard yesterday. All installations are fully up to date. The stack of maintenance invoices is extensive. The Williams 325 is sold separately. Are you looking for the finest Princess 61 currently on the market? Schedule a viewing at our covered sales marina.

Sjoerd Paddenburg

SPECIFICATIONS

Dimensions	18.77 x 4.88 x 1.35 (m)	Builder	Princess Yachts
Built	2002	Cabins	3
Material	GRP	Berths	6
Engine(s)	2 x MAN D2848-LE403 diesel	Hp/Kw	2 x 800.00 (hp), 588.00 (kw)
Asking price	€ 495.000 (VAT Paid)	Lying	at sales office

CONTACT

Sales office	De Valk Loosdrecht B.V.	Telephone	+31 (0)35 582 90 30
Address	't Breukeleveense Meentje 6 1231LM Loosdrecht / Wijdmeren NL	E-mail	loosdrecht@devalk.nl

DISCLAIMER

These particulars are given in good faith as supplied but cannot be guaranteed.



PRINCESS 61 FLYBRIDGE

GENERAL

Model	PRINCESS 61 FLYBRIDGE
Type	motor yacht
LOA (m)	18,77
Beam (m)	4,88
Draft (m)	1,35
Air draft min (m)	6,12
Year built	2002
Launched	2002
Builder	Princess Yachts
Country	United Kingdom
Designer	Bernard Olesinski
Displacement (t)	29
CE norm	B
Hull material	GRP
Hull colour	white
Hull shape	deep-V
Superstructure material	GRP
Rubbing strake	stainless steel
Deck material	GRP
Deck finish	teak
Superstructure deck finish	non-skid moulded in
Cockpit deck finish	teak
Antifouling (year)	Fully renewed in 2025, updated in 2026.
Window frame	stainless steel
Window material	tempered glass
Deckhatch	yes
Portholes	stainless steel
Flybridge	- Teak - Windscreenpanels replaced 2022
Flybridge cover	Bimini renewed 2017
Flybridge cockpit cover	yes



PRINCESS 61 FLYBRIDGE

Flybridge suncover	2024
Radar arch	non collapsible
Fuel tank (litre)	stainless steel 1500
Fuel tank 2 (litre)	stainless steel 1500
Level indicator (fuel tank)	yes
Freshwater tank (litre)	stainless steel 760
Level indicator (freshwater)	yes
Blackwater tank (litre)	polyethylene
Level indicator (blackwater)	yes
Blackwater tank extraction	deck extraction + pump
Wheel steering	hydraulic + Yacht Control remote (2017)
Inside helm position	yes
Flybridge helm position	hydraulic
Emergency tiller	yes

ACCOMMODATION

Cabins	3
Berths	6
Crew cabin	1
Crew berths	2
Interior	teak
Floor	carpet 2017
Open cockpit	yes
Saloon	yes
Air-conditioning	reverse cycle airco
Dinette	yes
Sliding door to cockpit	Stainless steel
Galley	yes
Countertop	corian
Sink	stainless steel 2020 replaced
Cooker	electric



PRINCESS 61 FLYBRIDGE

Microwave/oven combi	Panasonic Dimension 4 Turbo Bake
Fridge	EuroAngel
Freezer	EuroAngel
Hot water system	220V + engine
Water pressure system	electrical (2022)
Dishwasher	Siemens
Owners cabin	French bed Neptune matrass (2017)
Bed length (m)	2 m
Wardrobe	hanging/drawers/shelves
Bathroom	en suite
Toilet	en suite
Toilet system	electric Pump (2024)
Wash basin	in the bathroom
Shower	en suite Shower head (2024)
Extra info	SALOON - curtains 2024 - carpets 2024 - wall + ceiling upholstery 2025 - new upholstery 2024 - Led lighting 2018 - mosquito window protector 2024 - reading lamps 2024 - television 2024 - mirror 2024 - air-condition panels renewed 2024 - Luxaflex 2025 MASTER CABIN - mirror 2024 - make-up mirror 2024 - new air conditioning control panel 2024 MASTER CABIN HEAD - new toilet engine 2024 - new mirror 2024 - new make-up mirror 2024 - new water tap 2024 - new shower head 2024 - new luxaflex shutter - new mosquito screen
Guest cabin 1	French bed
Bed length (m)	2 m
Wardrobe	hanging/drawers/shelves
Bathroom	en suite
Toilet	en suite Toilet seat (2024)
Toilet system	electric
Wash basin	in the bathroom
Shower	en suite Shower head (2024)



PRINCESS 61 FLYBRIDGE

Extra info	VIP CABIN - new led light strips 2018 - new ceiling upholstery 2024 - new curtains 2024 - new carpets 2024 - new reading lights 2024 - new airconditioning control panel 2024 - new musquito screen 2024 VIP CABIN HEAD - new toilet pump, seating and tubes 2024 - new shower head 2024 - new luxaflex shutter 2024 - new musquito screen 2024 - new mirror 2024
Guest cabin 2	twin single
Bed length (m)	2 m
Wardrobe	hanging and shelves
Bathroom	shared
Toilet	shared
Toilet system	electric
Wash basin	in the bathroom
Shower	shared
Extra info	GUEST CABIN - new carpets 2024 - new curtains 2024 - new musquito screens 2024 - new reading lights 2024 DAY HEAD - new water tap 2024 - new shower head 2024 - new luxaflex shutter 2024 - new musquito screens 2024 - new mirror 2024
Crew cabin(s)	yes
Bathroom (crew)	yes
Toilet (crew)	yes
Wash basin	yes
Washing machine	Electrolux 2022
Flybridge	yes
Wet bar	yes

MACHINERY

No of engines	2
Make	MAN
Type	D2848-LE403
HP	800
kW	588
Fuel	diesel



PRINCESS 61 FLYBRIDGE

Year installed	2002
Maximum speed (kn)	29
Cruising speed (kn)	21
Consumption (l/hr)	135
Range (nm)	390
Engine hours	1040
Engine cooling system	freshwater heat exchanger
Drive	shaft
Shaft seal	yes
Engine controls	electrical
Gearbox	hydraulic Twin Disc
Bowthruster	Sidepower
Sternthruster	Sidepower
Exhaust	watercooled
Propeller type	fixed
Propeller shaft material	stainless steel
Shaft lubrication	water
Manual bilge pump	yes
Electric bilge pump	yes
Generator	Onan 11MDKAB #D010227623
Running hours generator	475
Batteries	yes
Start battery	4x Exide dual 12V - 115Ah
Service battery	6x Exide dual 12V - 115Ah
Generator battery	yes
Battery monitor	yes
Battery charger	Mastervolt Chargemaster 24/100-3
Diode battery combiners	yes
Shorepower	with cable 2x
Trimtabs	yes



PRINCESS 61 FLYBRIDGE

Extra info

- Engines continuously serviced - Automatic fire extinguisher revised 2021 - Turbo and injectors revised 2019 - Ventilation tubes renewed - Battery charger renewed 2019 - Generator service up to date - Steering system revised 2019 - Stern thruster 2017 - Yacht Control remote 2017 - Raw water pipes renewed 2025 - All seacocks renewed 2024 -new batteries 2024 - Engine waterpumps 2024

NAVIGATION

Electric compass

Raymarine Autopilot

Depth sounder

Raymarine Autohelm series

Log

Raymarine Autohelm series

VHF

yes

Autopilot

Raymarine Autohelm series

Radar

Garmin GMR24 XHD

Radar/GPS/plotter

Garmin GPSMAP 8416

Navtex

Furuno Navtex NX-300

Navigation lights

yes

Searchlight

ACR electronics

Loudhailer

yes

Extra info

yes

EQUIPMENT

Fixed windscreen

Lexan 2024

Bimini

(2024)

Window cover

yes

Cockpit cushions

(2024)

Cockpit table

Teak

Cockpit chairs

Teak

Bathing platform

yes

Boarding ladder

stainless steel

Transom door

yes



PRINCESS 61 FLYBRIDGE

Gangway	Opacmare (overhaul 2024)
Deck shower	yes
Anchor	CQR Plough Stainless
Anchor chain	Stainless
Chain counter	On remote
Windlass	electrical Lewmar
Windlass aft	electrical 2x
Deck wash	yes
Dinghy	Not included / wordt los verkocht / wird separat verkauft
Sea railing	stainless steel
Grab rail (superstructure)	stainless steel
Life raft	container Seago
Life raft (pers)	container 6
Last life raft survey	2023
Lifejackets	yes
Wiper	yes
Window ventilator	yes
Horn	electric 2x
Fenders	yes
Mooring lines	yes
Spare parts	yes
Tools	yes
Radio-cd player	Sony
DVD player	Sony
Cockpit speakers	yes
Speakers in salon	yes
Fire extinguisher	yes
Auto extinguisher system	yes



PRINCESS 61 FLYBRIDGE



PRINCESS 61 FLYBRIDGE



PRINCESS 61 FLYBRIDGE



PRINCESS 61 FLYBRIDGE



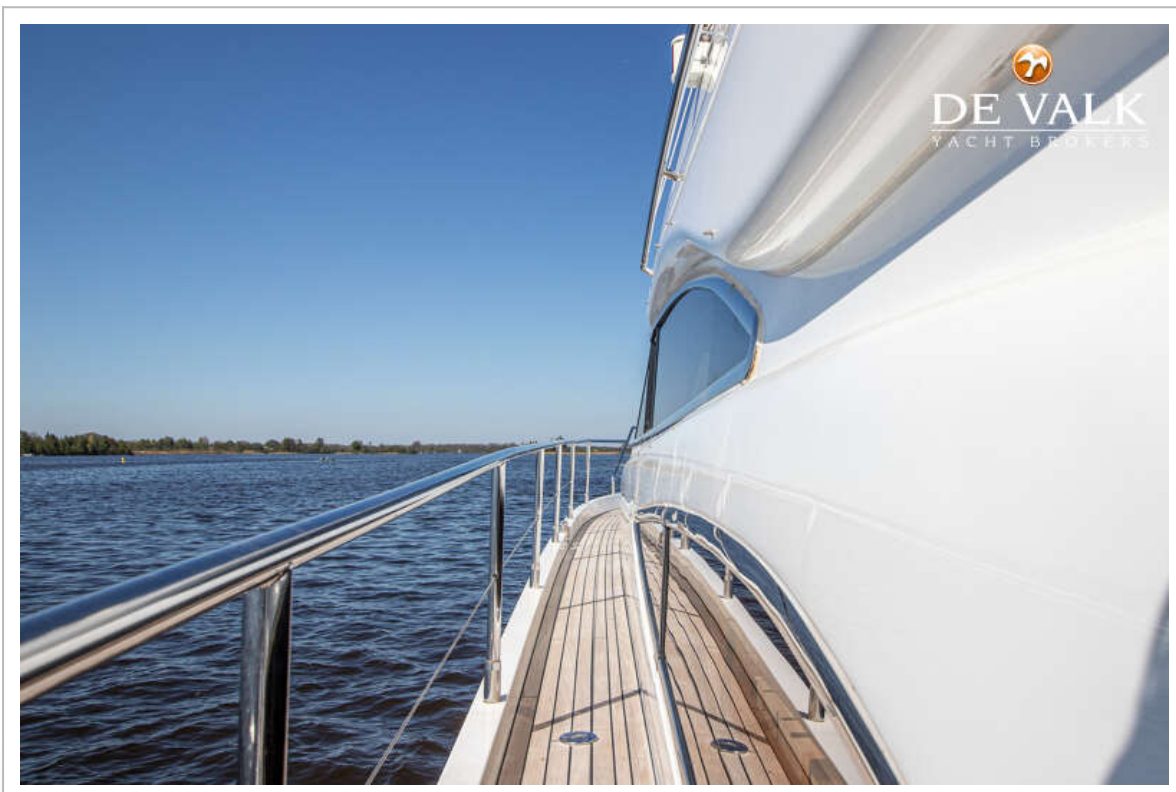
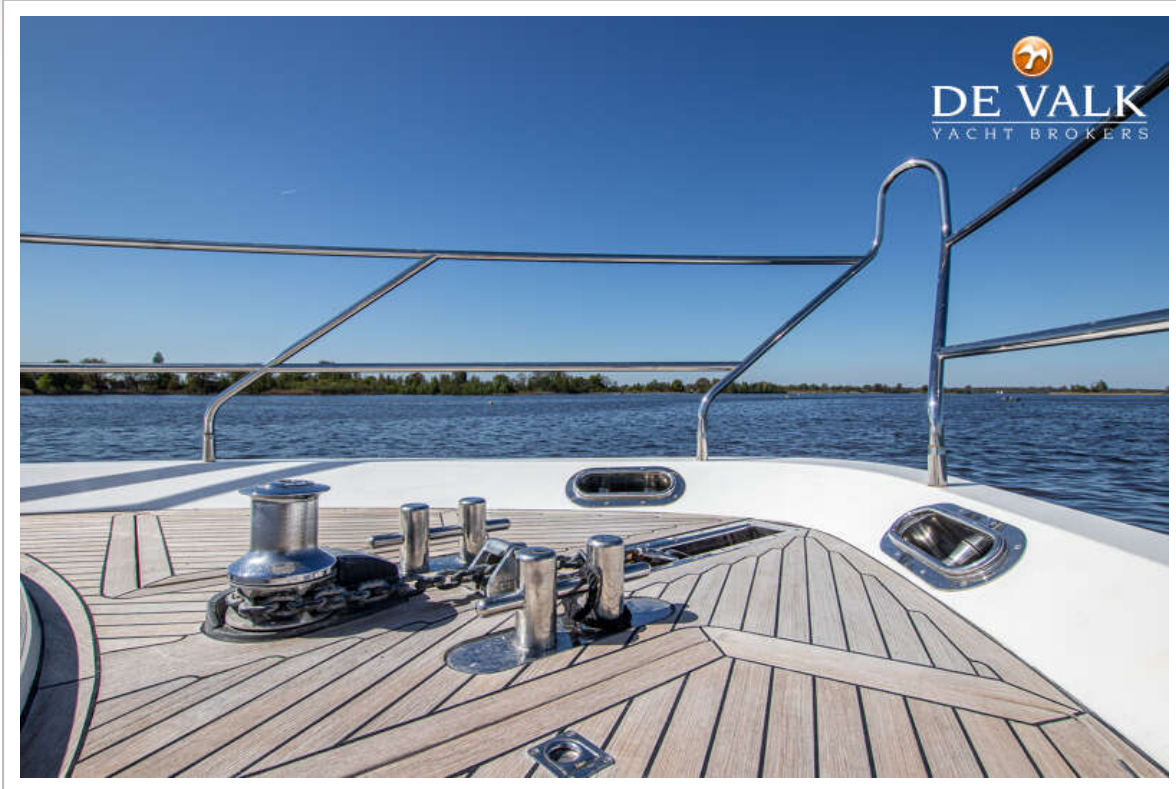
PRINCESS 61 FLYBRIDGE



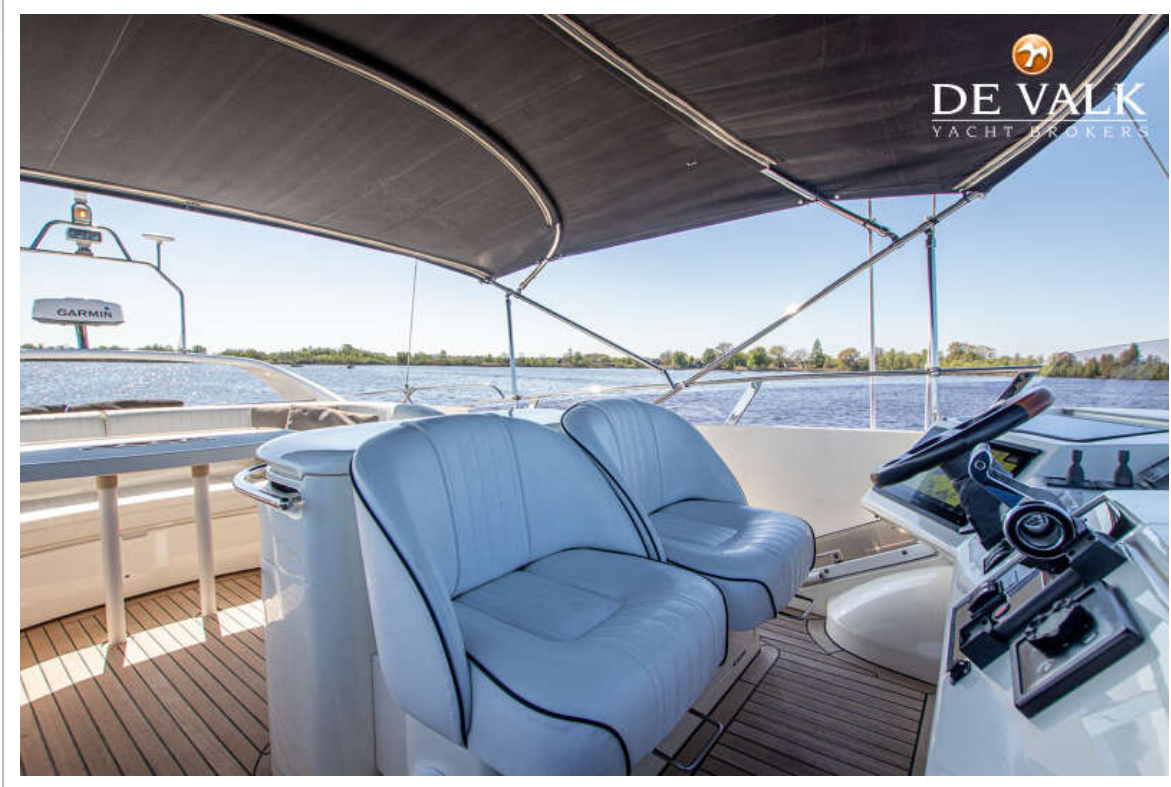
PRINCESS 61 FLYBRIDGE



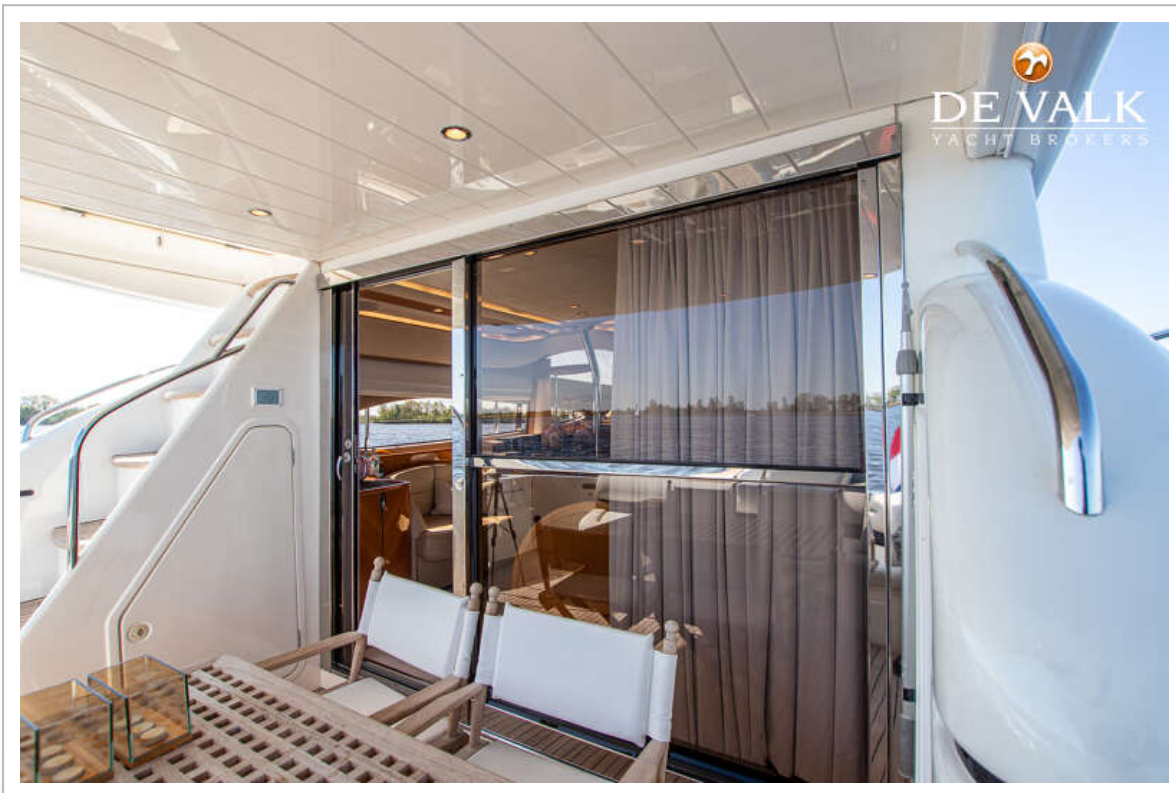
PRINCESS 61 FLYBRIDGE



PRINCESS 61 FLYBRIDGE



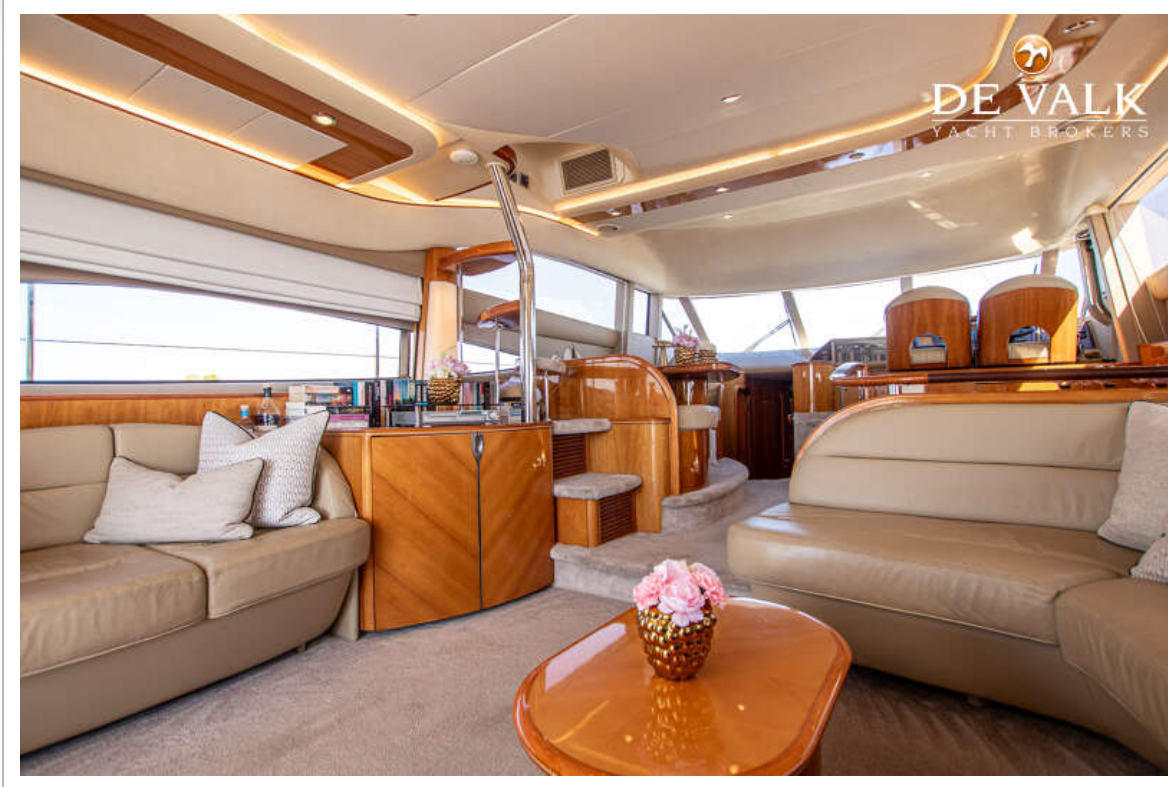
PRINCESS 61 FLYBRIDGE



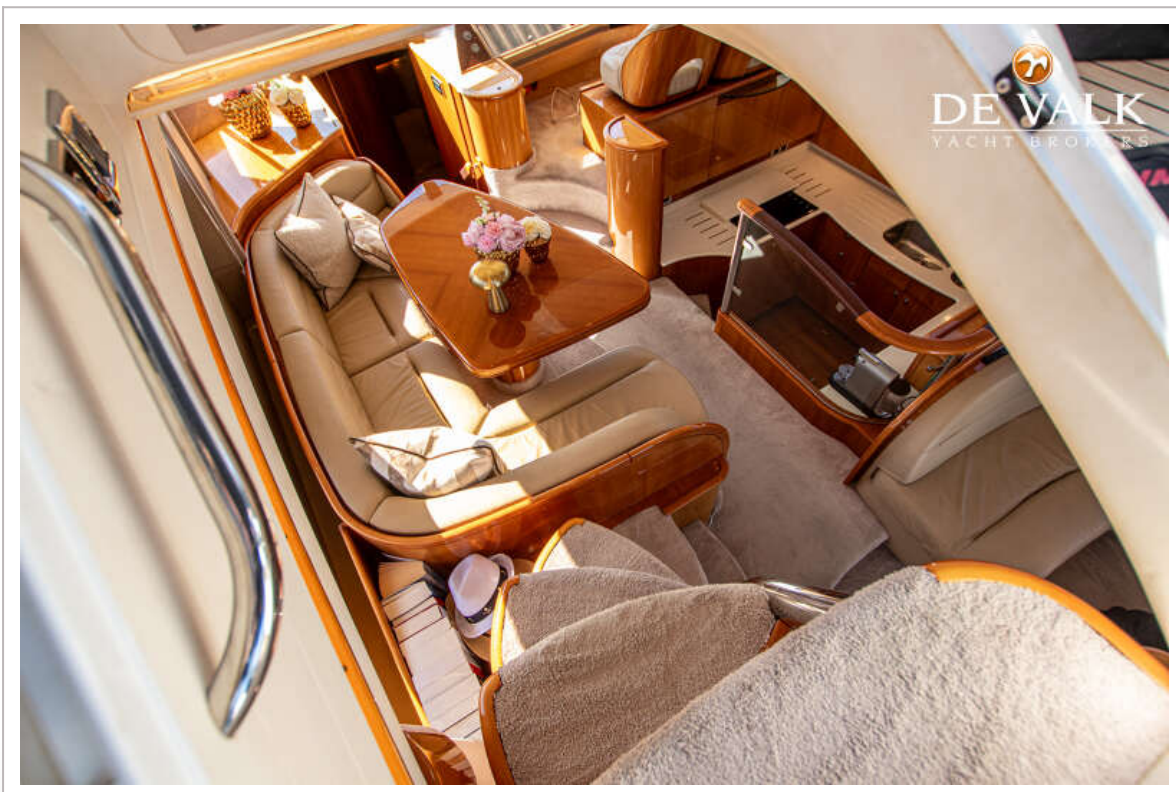
PRINCESS 61 FLYBRIDGE



PRINCESS 61 FLYBRIDGE



PRINCESS 61 FLYBRIDGE



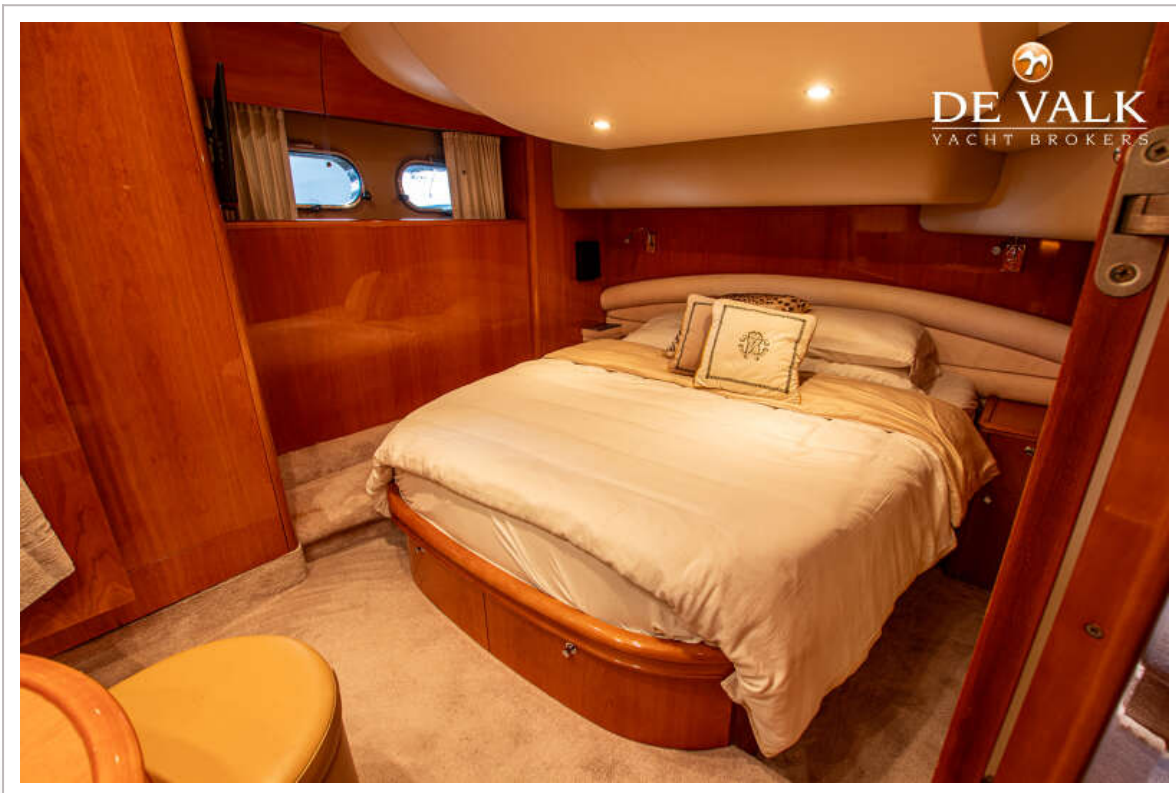
PRINCESS 61 FLYBRIDGE



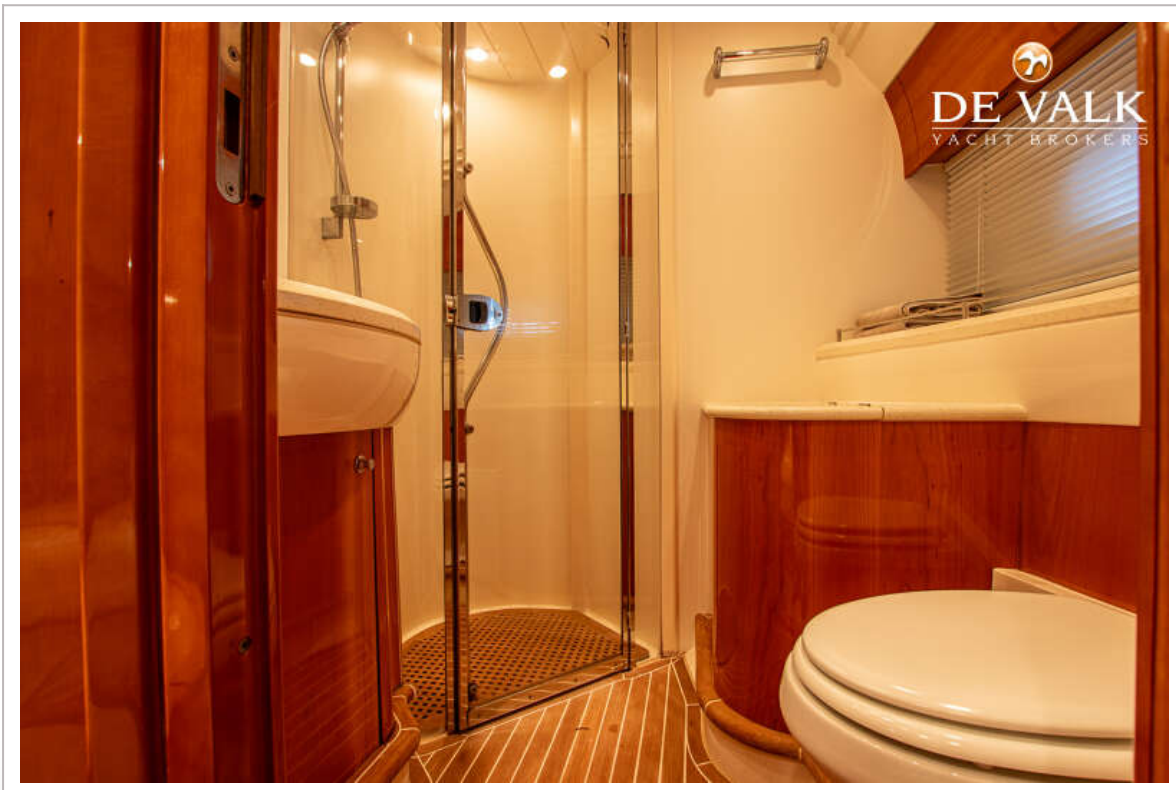
PRINCESS 61 FLYBRIDGE



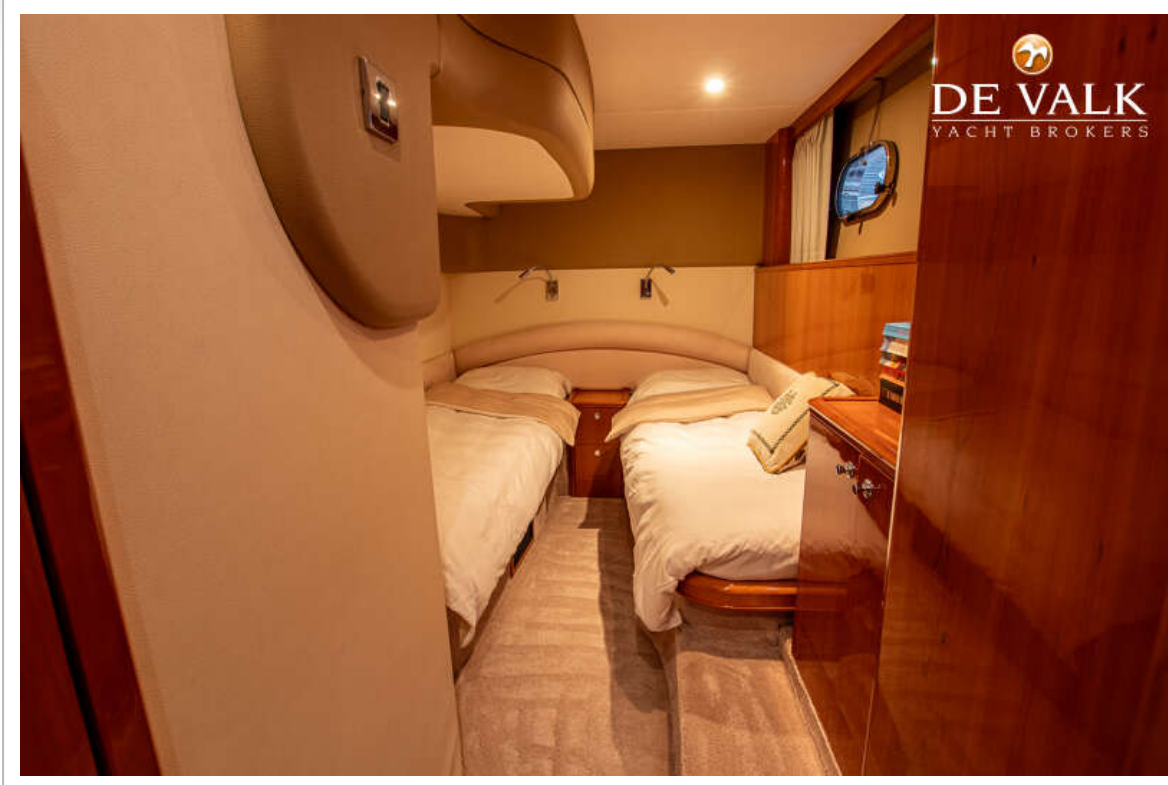
PRINCESS 61 FLYBRIDGE



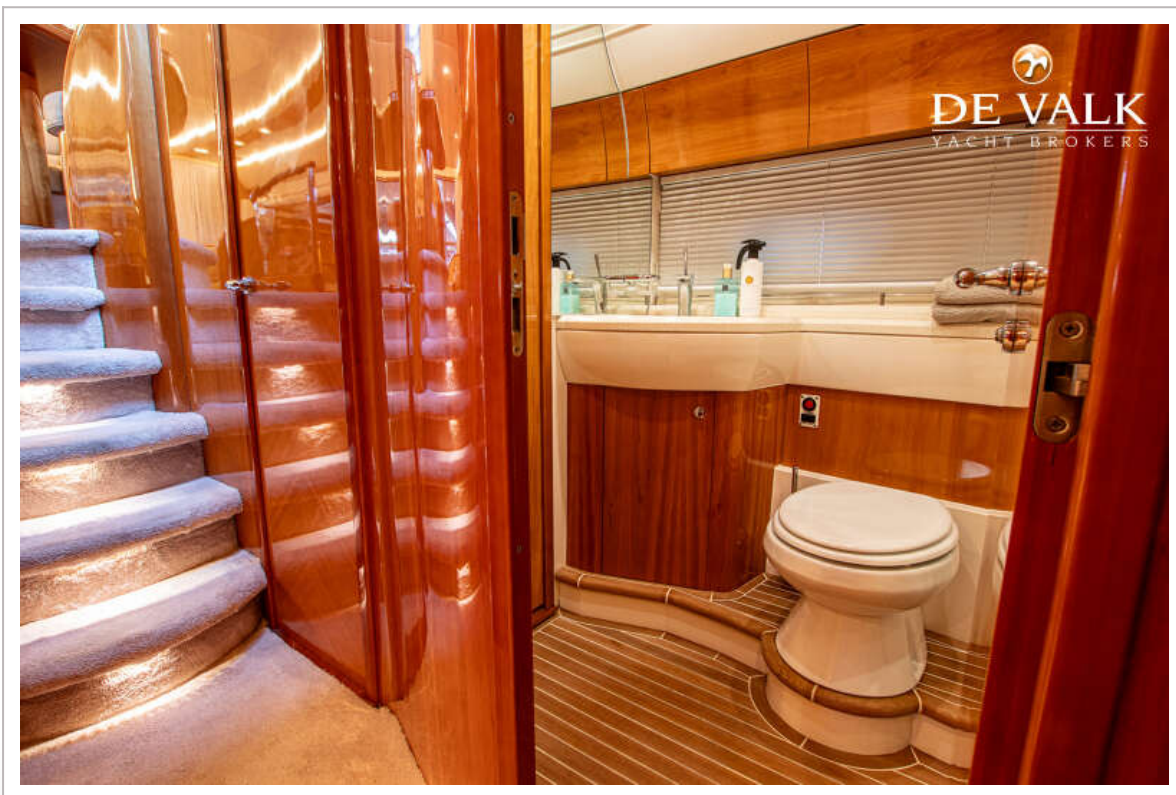
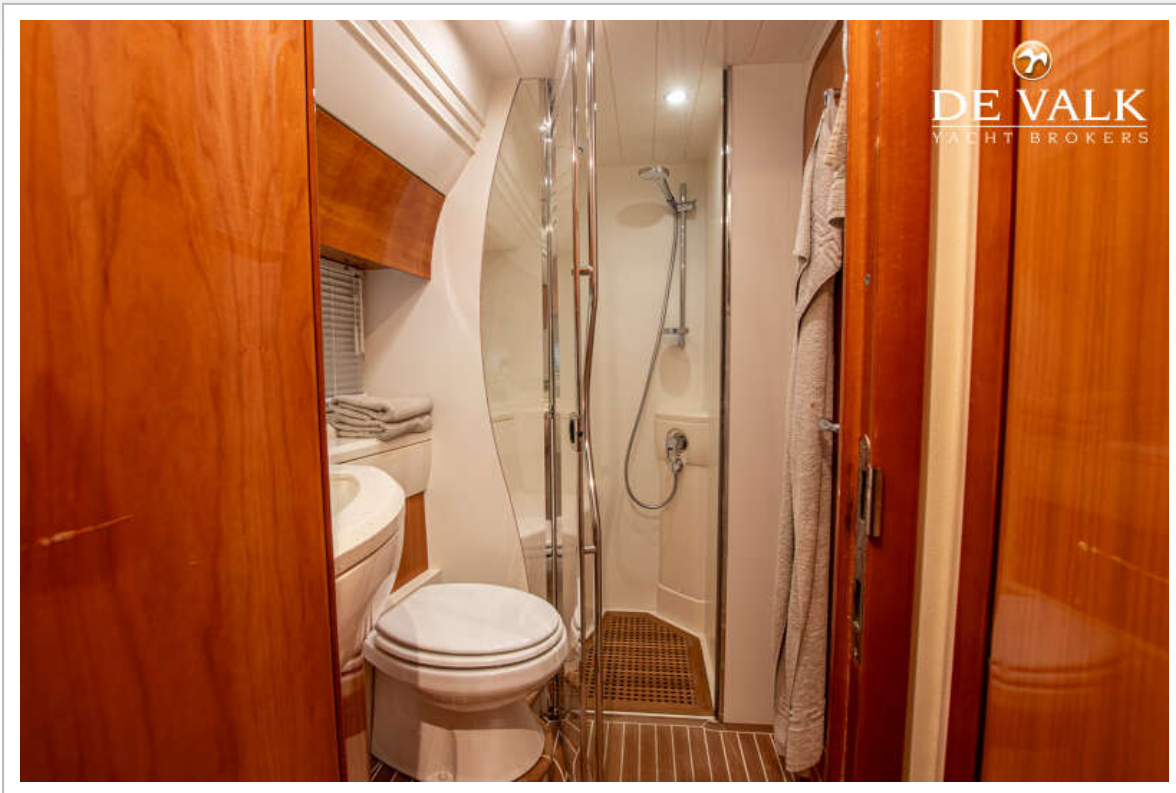
PRINCESS 61 FLYBRIDGE



PRINCESS 61 FLYBRIDGE



PRINCESS 61 FLYBRIDGE



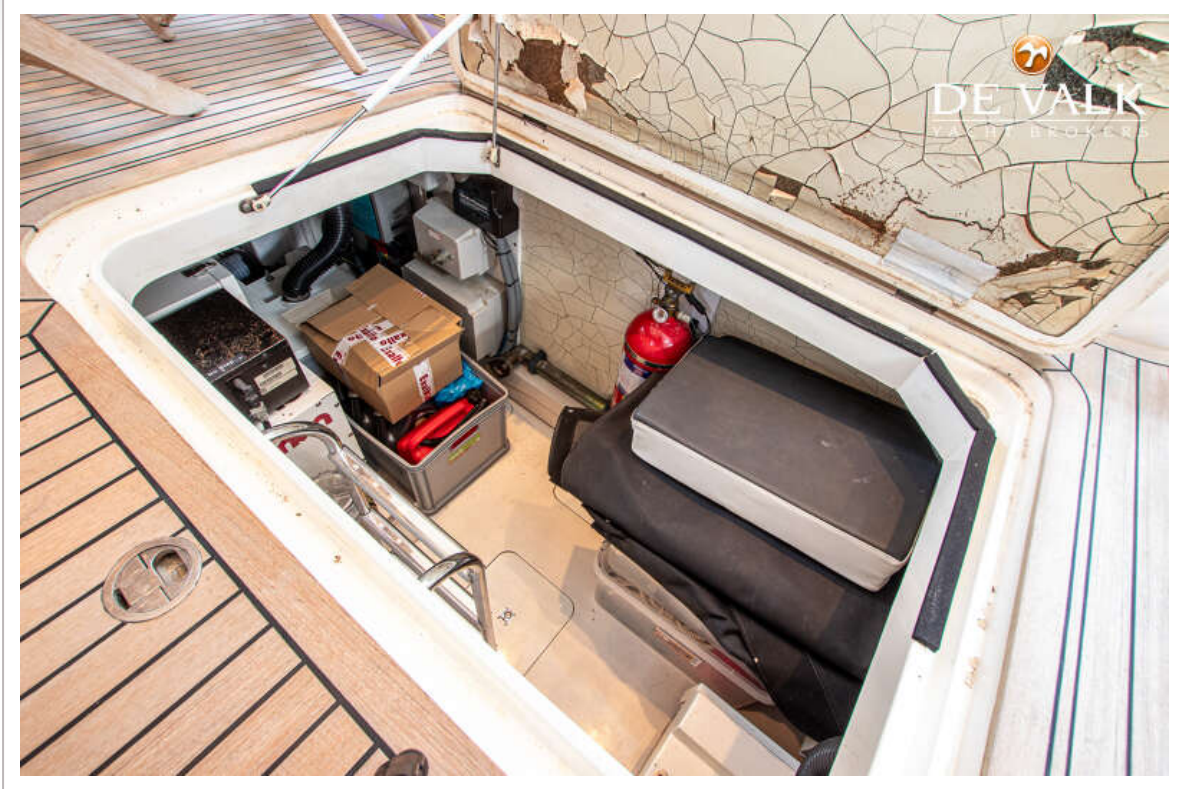
PRINCESS 61 FLYBRIDGE



PRINCESS 61 FLYBRIDGE



PRINCESS 61 FLYBRIDGE



PRINCESS 61 FLYBRIDGE

