



BENETEAU OCEANIS CLIPPER 473


DE VALK
YACHT BROKERS

BENETEAU OCEANIS CLIPPER 473

BROKER'S COMMENTS

BBQ and party on the aft deck? On this unique Beneteau 4 cabin you can! A small fire in the aft in 2004 gave the owner the great opportunity to extend the swimming platform with 3.5 feet. The extension has been done professionally, bringing a superb multi functional relax area as a bonus. It fits remarkably well with the lines of the yacht. Outside she is over-all in good condition with i.e. good Elvstrom 2012 sails, new solar panels, new cushions, new sun cover and more. Inside new upholstery, but she needs some attention and retouch. All could be done on a small budget. Priced to sell!

Willem Koopmans

SPECIFICATIONS

Dimensions	15.00 x 4.30 x 1.70 (m)	Builder	Beneteau
Built	2002	Cabins	4
Material	GRP	Berths	8
Engine(s)	1 x Yanmar 43h3hte diesel	Hp/Kw	100.00 (hp), 73.50 (kw)
Asking price	sold (VAT)	Lying	contact sales office

CONTACT

Sales office	De Valk Costa Blanca	Telephone	+34 96 50 21 569
Address	Costa Blanca Region 03730 Javea Alicante ES	E-mail	costablanca@devalk.nl

DISCLAIMER

These particulars are given in good faith as supplied but cannot be guaranteed.



GENERAL

Model	BENETEAU OCEANIS CLIPPER 473
Type	sailing yacht
LOA (m)	15,00
Beam (m)	4,30
Draft (m)	1,70
Headroom (m)	2,00
Year built	2002
Builder	Beneteau
Country	France
Designer	Finot / Conq
Displacement (t)	12
CE norm	A
Hull material	GRP
Hull colour	white
Hull shape	round-bilged
Keel type	fin keel
Superstructure material	GRP
Deck material	GRP
Deck finish	non-skid moulded in
Superstructure deck finish	non-skid moulded in
Cockpit deck finish	teak
Antifouling (year)	2016
Fuel tank (litre)	polyethylene 300
Level indicator (fuel tank)	yes
Freshwater tank (litre)	polyethylene 2 x 300
Level indicator (freshwater)	yes
Blackwater tank (litre)	80
Wheel steering	cable steering Double
Emergency tiller	yes
More info on hull	Fantastic extended swimming platform



More info on paintwork

Extra info

Respray in 2004

Small repair on aft due to fire, professionally repaired

ACCOMMODATION

Cabins	4
Berths	8
Interior	mahogany
Layout	4 cabin
Saloon	New upholstery
Headroom saloon (m)	2 mtr
Chart table	yes
Aft Cabin	2
Dinette	yes
Galley	yes
Countertop	yes
Sink	Double
Oven	yes
Fridge	Double
Freezer	yes
Hot water system	220V + engine
Water pressure system	yes
Guest cabin 1	double bed
Bed length (m)	2,05
Wardrobe	hanging and shelves
Toilet	shared
Toilet system	manual
Wash basin	in the bathroom
Shower	shared
Guest cabin 2	double bed
Bed length (m)	2,05
Wardrobe	hanging and shelves



BENETEAU OCEANIS CLIPPER 473

Toilet	shared
Toilet system	manual
Wash basin	in the bathroom
Shower	shared
Guest cabin 3	double bed
Bed length (m)	2,05
Wardrobe	hanging and shelves
Toilet	shared
Toilet system	manual
Wash basin	in the bathroom
Shower	shared
Guest cabin 4	double bed
Bed length (m)	2,05
Wardrobe	hanging and shelves
Toilet	shared
Toilet system	manual
Wash basin	in the cabin
Shower	shared
Extra info	Interior need rework. Some varnishing, new top blade in galley

MACHINERY

No of engines	1
Make	Yanmar
Type	43h3hte
HP	100,00
kW	73,50
Fuel	diesel
Year installed	2002
Maximum speed (kn)	8
Cruising speed (kn)	7
Consumption (l/hr)	3



Engine cooling system	freshwater heat exchanger
Manual bilge pump	yes
Electric bilge pump	yes
Batteries	3 x AGM dry cell 180 Ah new 2016
Start battery	yes
Battery charger	yes
Solar panel	New 4 x 165 Watt, Victron regulators
Shorepower	with cable

NAVIGATION

Compass	yes
Depth sounder/log	Raymarine ST 60 Tridata
Windset	Raymarine ST 60 wind
VHF	Navicom
Autopilot	Raymarine ST 6001
Rudder angle indicator	At pilot
Navigation lights	yes

EQUIPMENT

Bimini	Huge and renewed 2017
Cockpit cushions	New 2017
Cockpit table	yes
Bathing platform	Extended, absolutely superb relax area
Boarding ladder	yes
Deck shower	yes
Anchor	CQR Plough Stainless steel
Anchor chain	50 mtr 10 mm
Dinghy	New 2016 and new protection
Outboard	New 2017
Outboard support	yes
Sea railing	stainless steel Partly



Fenders	yes
Mooring lines	yes
TV	yes
Radio-cd player	yes
Speakers in salon	yes
Speakers in cabin	yes

RIGGING

Rigging	fractional
Standing rigging	wire
Material mast	aluminium
Spreaders	yes
Mainsail	Elvstrom 2012
Mainsail cover	yes
Battcars	yes
Fully battened mainsail	yes
Genoa furler	Elvstrom 2012 UV strip
Gennaker	yes
Genoa sheetwinches	Lewmar 54
Multifunctional winches	Lewmar
Gennaker pole	aluminium



BENETEAU OCEANIS CLIPPER 473



BENETEAU OCEANIS CLIPPER 473



BENETEAU OCEANIS CLIPPER 473



BENETEAU OCEANIS CLIPPER 473



BENETEAU OCEANIS CLIPPER 473



BENETEAU OCEANIS CLIPPER 473



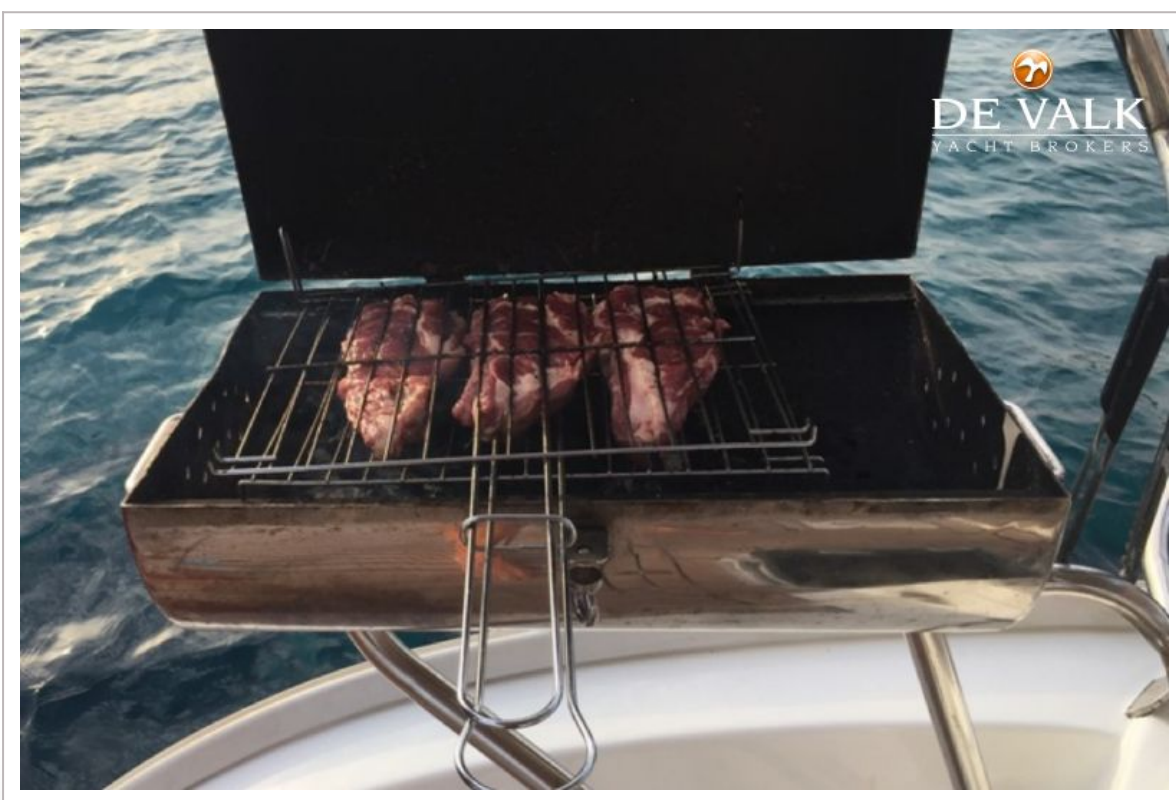
BENETEAU OCEANIS CLIPPER 473



BENETEAU OCEANIS CLIPPER 473



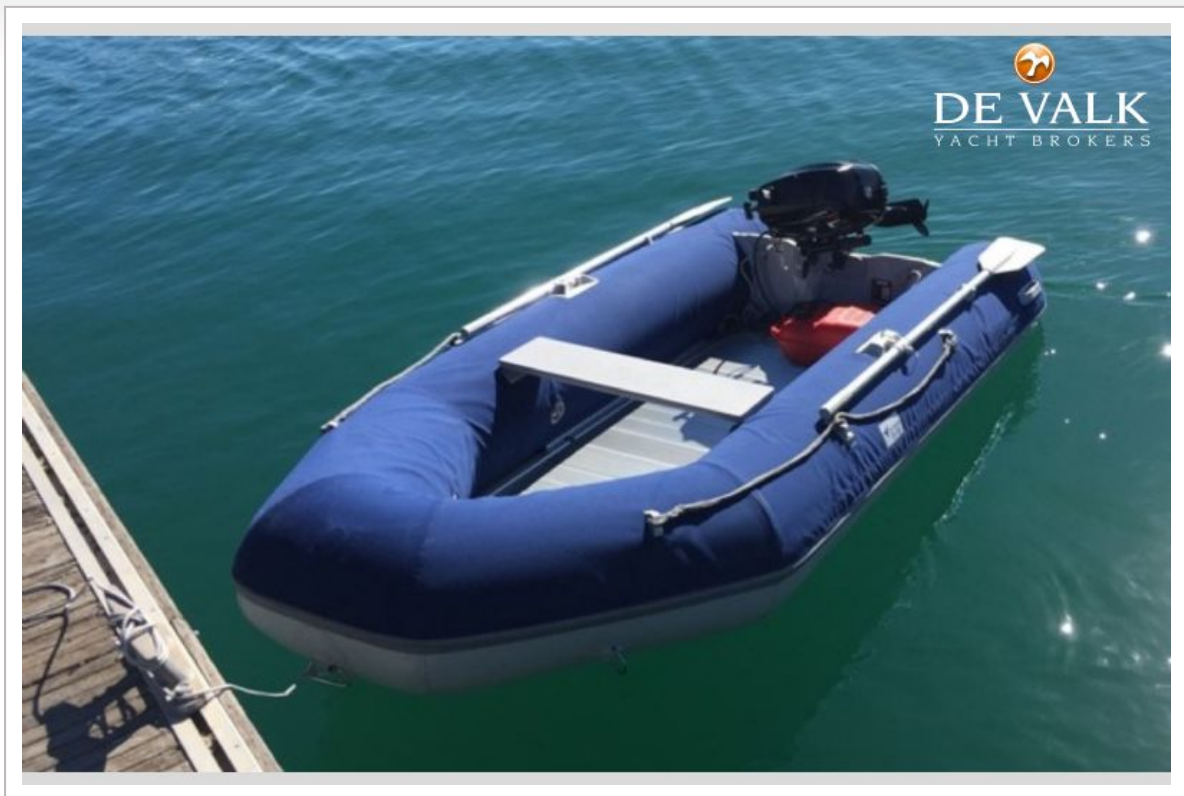
BENETEAU OCEANIS CLIPPER 473



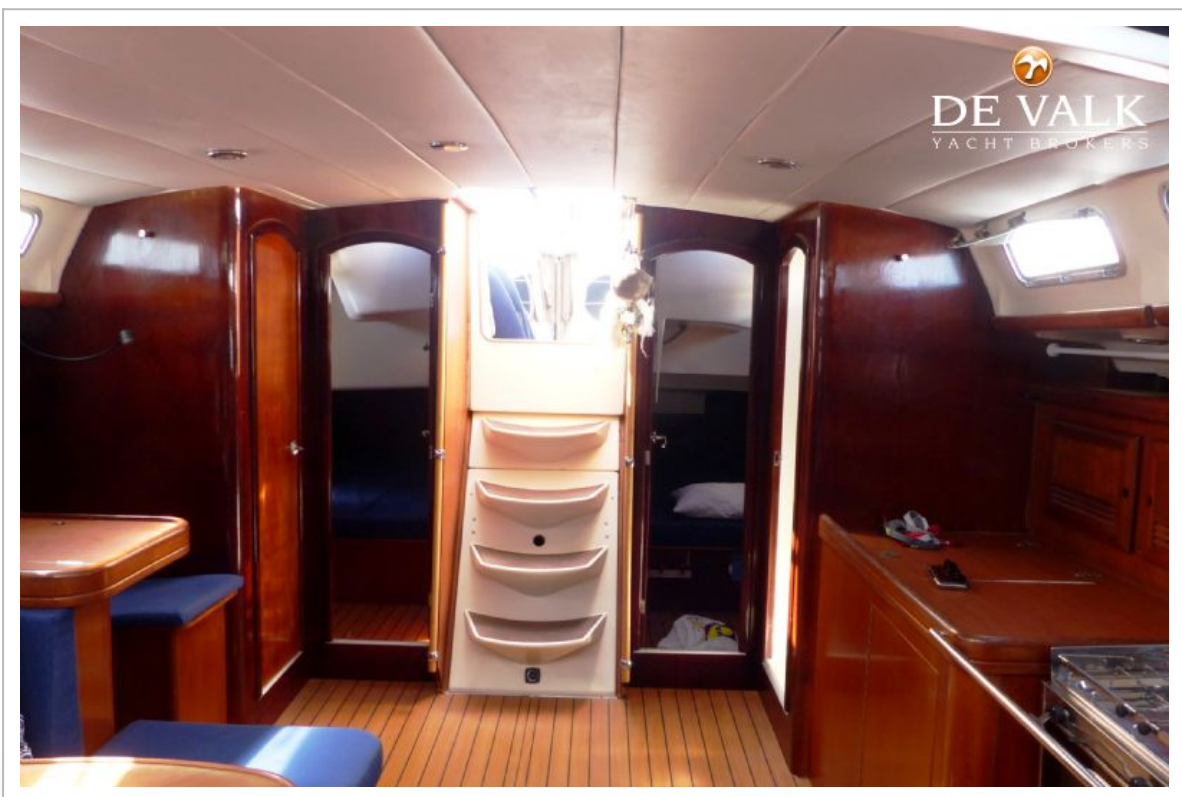
BENETEAU OCEANIS CLIPPER 473



BENETEAU OCEANIS CLIPPER 473



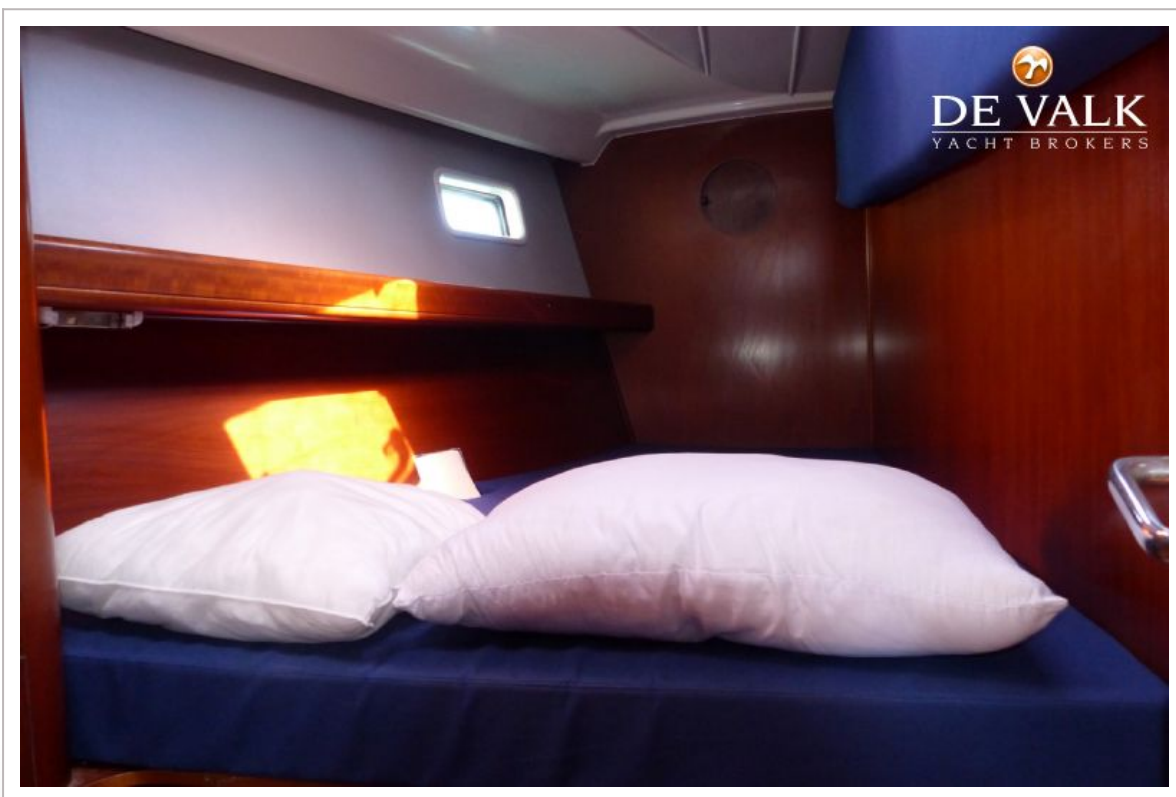
BENETEAU OCEANIS CLIPPER 473



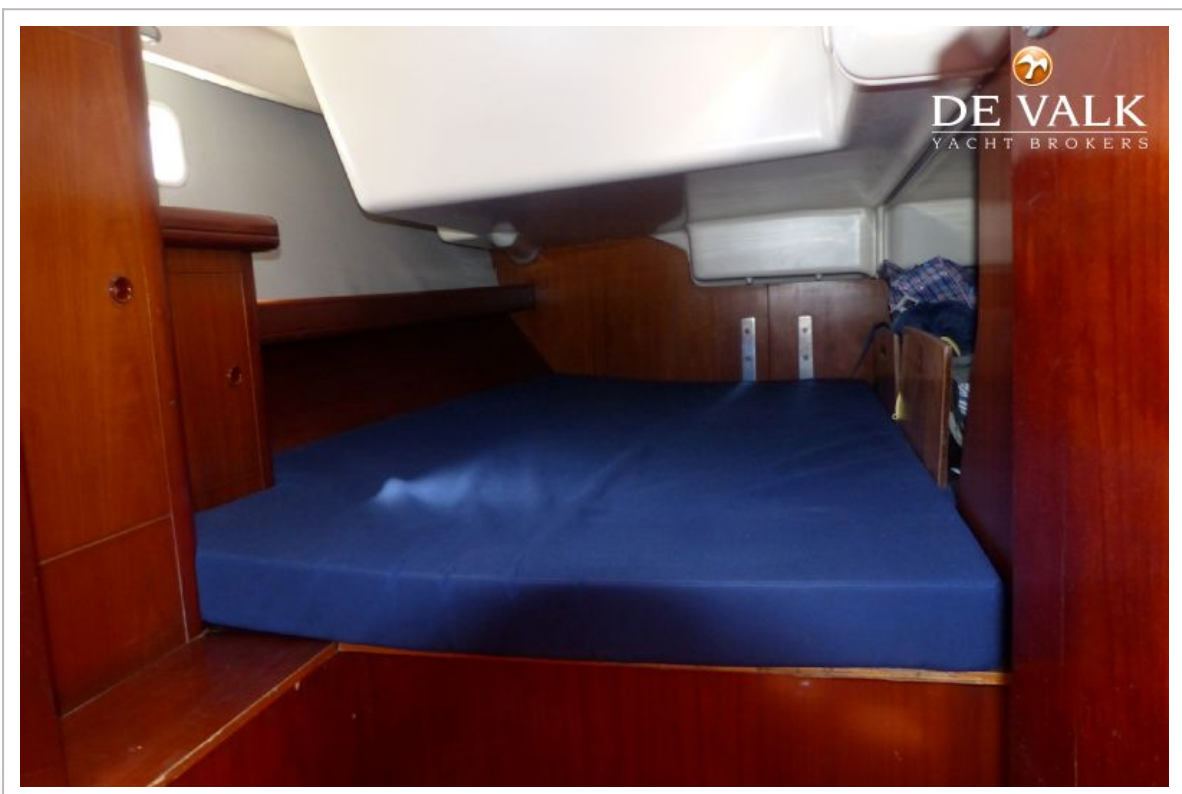
BENETEAU OCEANIS CLIPPER 473



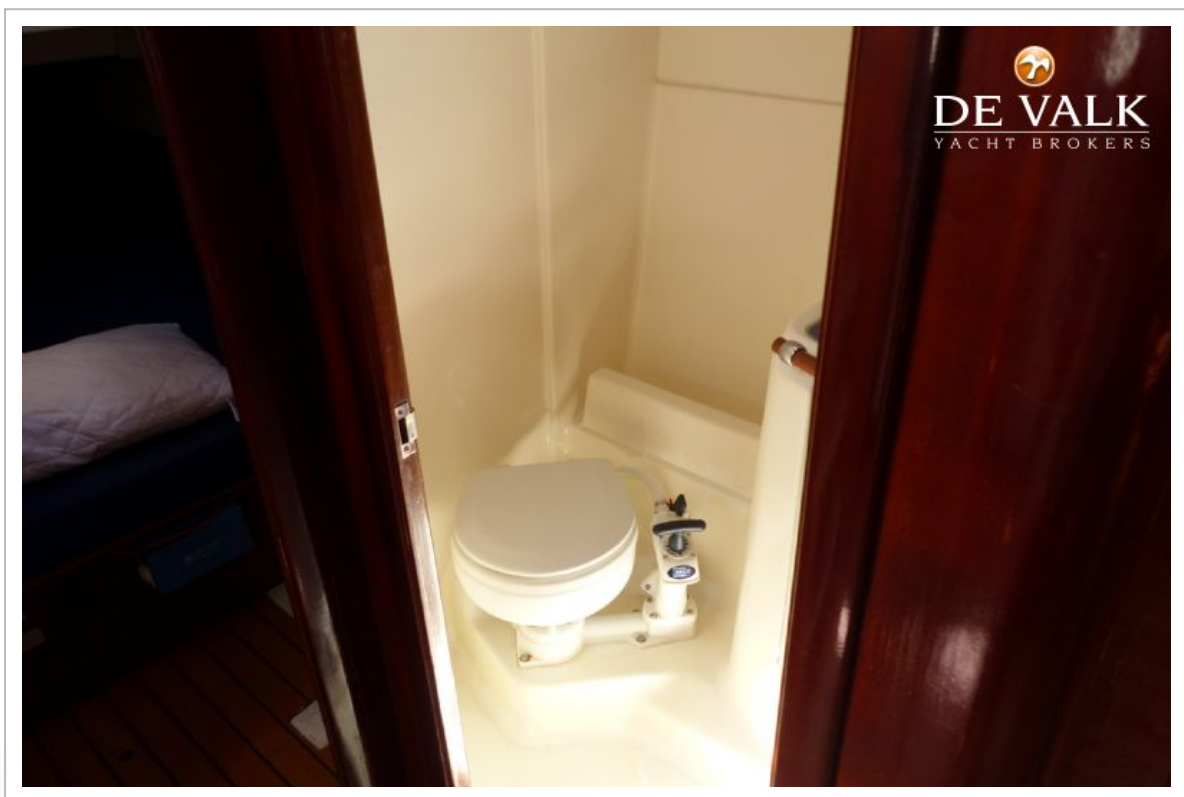
BENETEAU OCEANIS CLIPPER 473



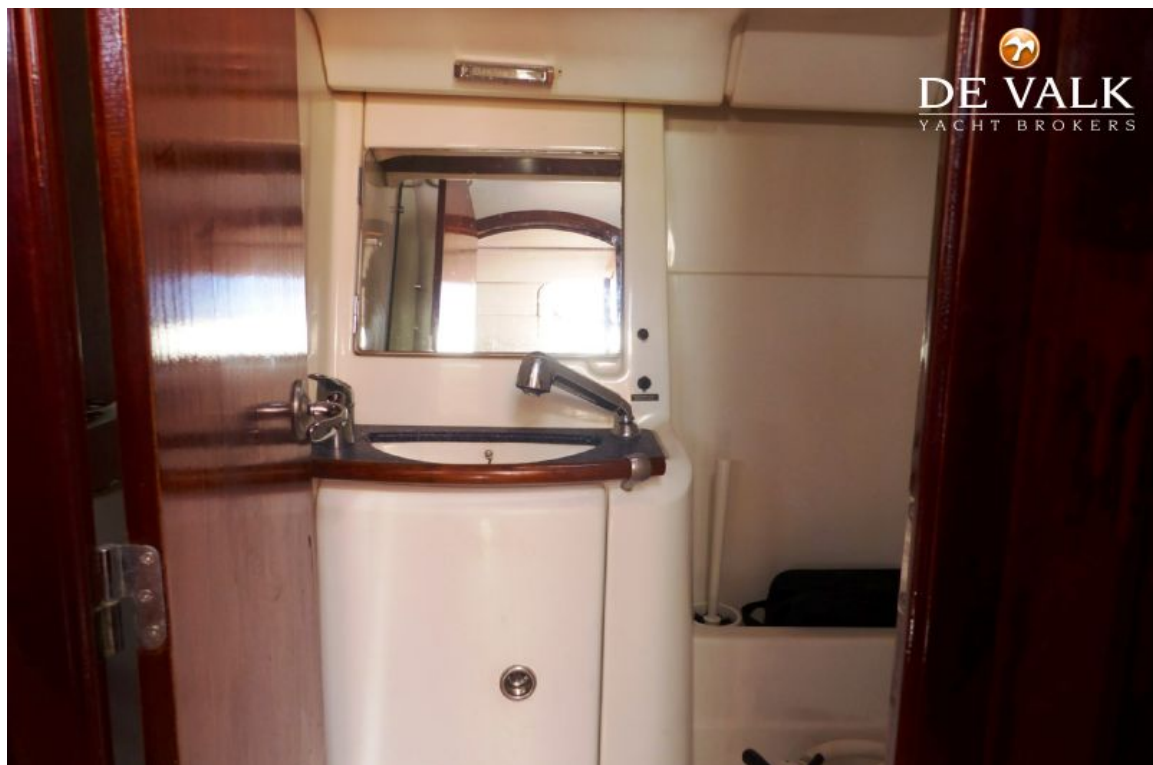
BENETEAU OCEANIS CLIPPER 473



BENETEAU OCEANIS CLIPPER 473



BENETEAU OCEANIS CLIPPER 473



BENETEAU OCEANIS CLIPPER 473

