



DE VALK
YACHT BROKERS



BAVARIA 46 CRUISER



DE VALK
YACHT BROKERS

BAVARIA 46 CRUISER

BROKER'S COMMENTS

Want to sail directly without worries? This Bavaria 46 gives you that pleasant WOW factor! The comfortable 4 cabin family cruiser is a very good example of how a well maintained used yacht should be. Overall state is simply spoken very good. She offers a spacious, very neat and hardly used interior and is only private used. Equipped with new gel batteries and solar panels, new cold foam mattresses in owners cabin, new genoa cover, all replaced beginning 2017. All service recently done also. The present 16 m mooring on one of the best places In Alicante is separately for sale.

Willem Koopmans

SPECIFICATIONS

Dimensions	14.40 x 4.35 x 2.05 (m)	Builder	Bavaria Yachtbau GmbH
Built	2005	Cabins	4
Material	GRP	Berths	9
Engine(s)	1 x Volvo Penta D2-55 diesel	Hp/Kw	55.78 (hp), 41.00 (kw)
Asking price	sold (VAT)	Lying	contact sales office

CONTACT

Sales office	De Valk Costa Blanca	Telephone	+34965021569
Address	Costa Blanca Region 03730 Javea Alicante Spain	E-mail	costablanca@devalk.nl

DISCLAIMER

These particulars are given in good faith as supplied but cannot be guaranteed.



BAVARIA 46 CRUISER

GENERAL

Model	BAVARIA 46 CRUISER
Type	sailing yacht
LOA (m)	14,40
LWL (m)	12,20
Beam (m)	4,35
Draft (m)	2,05
Air draft (m)	19,20
Year built	2005
Builder	Bavaria Yachtbau GmbH
Country	Germany
Designer	J & J Design
Displacement (t)	11
CE norm	A
Hull material	GRP
Hull colour	white
Hull shape	round-bilged
Keel type	fin keel
Superstructure material	GRP
Deck material	GRP
Deck finish	non-skid moulded in
Superstructure deck finish	non-skid moulded in
Cockpit deck finish	teak
Antifouling (year)	2017
Fuel tank (litre)	polyethylene 210 l
Level indicator (fuel tank)	yes
Freshwater tank (litre)	polyethylene 2x 230 l
Level indicator (freshwater)	yes
Blackwater tank (litre)	polyethylene 60 l
Wheel steering	cable steering Double
Emergency tiller	yes



BAVARIA 46 CRUISER

ACCOMMODATION

Cabins	4
Berths	9
Interior	mahogany
Floor	teak and holly
Saloon	yes
Headroom saloon (m)	2m
Heating	diesel ducted hot air Webasto 5 kW
Navigation center	yes
Chart table	yes
Aft Cabin	Double
Dinette	yes
Galley	yes
Countertop	Duropol
Sink	stainless steel Double
Cooker	calor gas
Oven	Gas
Fridge	Double, toploader and door
Freezer	Small size
Hot water system	220V + engine
Water pressure system	electrical
Owners cabin	French bed
Bed length (m)	2m
Wardrobe	hanging and shelves
Bathroom	en suite
Toilet	en suite
Toilet system	yes
Wash basin	in the bathroom
Shower	en suite
Extra info	Mattress custom made, cold foam shaped (2017)
Guest cabin 1	double bed



BAVARIA 46 CRUISER

Bed length (m)	2m
Wardrobe	hanging and shelves
Bathroom	shared
Toilet	shared
Toilet system	yes
Wash basin	in the bathroom
Shower	shared
Guest cabin 2	double bed
Bed length (m)	2m
Wardrobe	hanging and shelves
Bathroom	shared
Toilet	shared
Toilet system	yes
Wash basin	in the bathroom
Shower	shared
Guest cabin 3	bunk bed
Bed length (m)	2m
Wardrobe	hanging and shelves
Bathroom	shared
Toilet	shared
Wash basin	in the bathroom
Shower	shared

MACHINERY

No of engines	1
Make	Volvo Penta
Type	D2-55
HP	55,78
kW	41,00
Fuel	diesel
Year installed	2005



BAVARIA 46 CRUISER

Maximum speed (kn)	8
Cruising speed (kn)	7
Consumption (l/hr)	2.5
Engine hours	700
Drive	sail-drive
Bowthruster	electric
Exhaust	watercooled
Propeller type	fixed
Propeller blades	3
Manual bilge pump	yes
Electric bilge pump	yes
Batteries	3 x 130 AH Victron new, gel, 2017
Start battery	yes
Battery charger/inverter	Mastervolt
Solar panel	2x 130 Watt, new (2017)
Shorepower	with cable
Extra info	Engine service 2017

NAVIGATION

Compass	2x Plastimo Olympique 135
Electric compass	Raymarine Rate Gyro for pilot
Depth sounder/log	Raymarine ST60
Windset	Raymarine ST60
VHF	Raymarine
Autopilot	Raymarine ST6001
Radar	2kW
Radar/GPS/plotter	Raymarine C80
Navtex	Mc Murdo/ ICS Nav 6
Navigation lights	yes

EQUIPMENT



BAVARIA 46 CRUISER

Sprayhood	yes
Cockpit cover	Tent
Cockpit table	Needs new veneer overlay
Bathing platform	yes
Boarding ladder	yes
Deck shower	yes
Anchor	Fortress
Anchor chain	Chain and line 50 mtr
Windlass	electrical Vetus 1200 watt
Life raft	container Plastimo Offshore
Life raft (pers)	8
Last life raft survey	Needs survey
Fenders	yes
Mooring lines	yes
TV	yes
Radio-cd player	yes
Fire extinguisher	yes

RIGGING

Rigging	sloop
Standing rigging	wire
Brand mast	Seldén
Material mast	aluminium
Spreaders	yes
Mainsail	yes
Mainsail cover	yes
Fully battened mainsail	HT battened with main drop system
Jib	150%
Genoa III	yes
Genoa furler	yes
Genoa cover	2016



BAVARIA 46 CRUISER

Gennaker	yes
Backstay adjuster	mechanical
Boomvang	mechanical and tackle
Primary sheet winch	Lewmar 50ST/Lewmar 44 ST
Secondary sheet winch	Lewmar 44ST electric
Multifunctional winches	2x Lewmar 40ST
Spi-pole	aluminium
Gennaker pole	aluminium



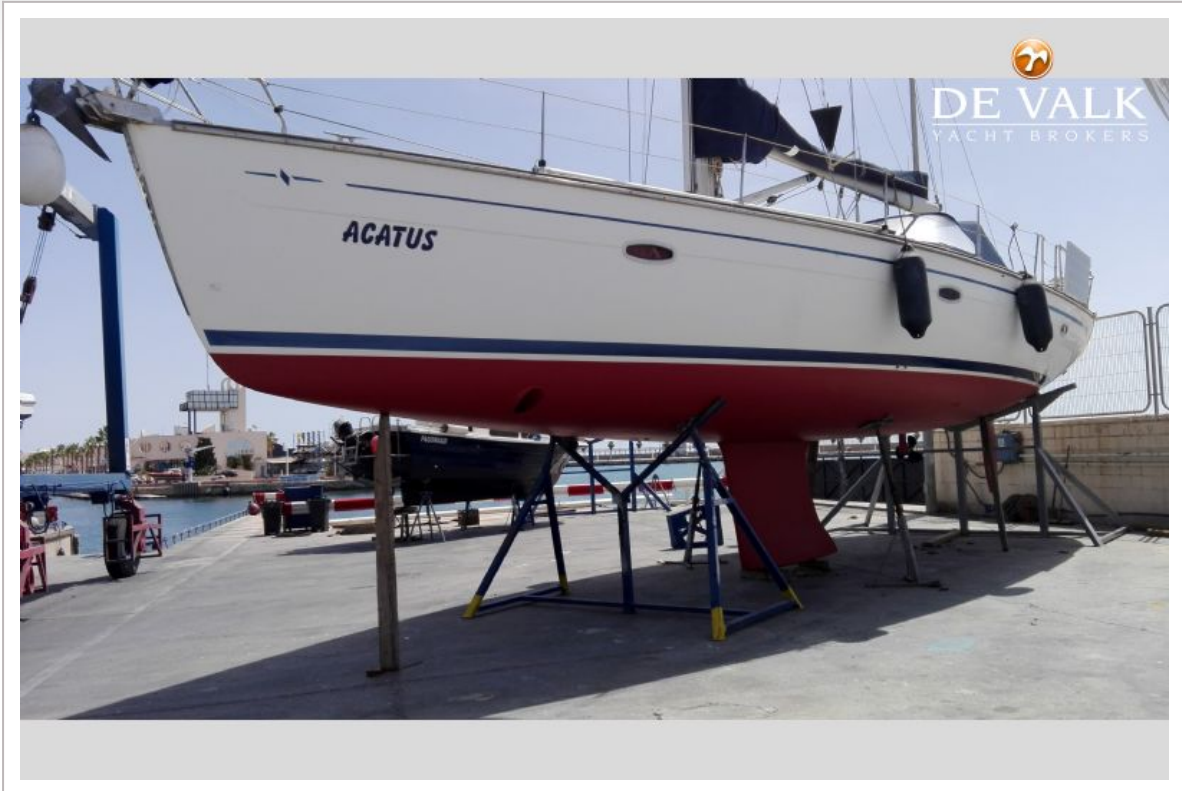
BAVARIA 46 CRUISER



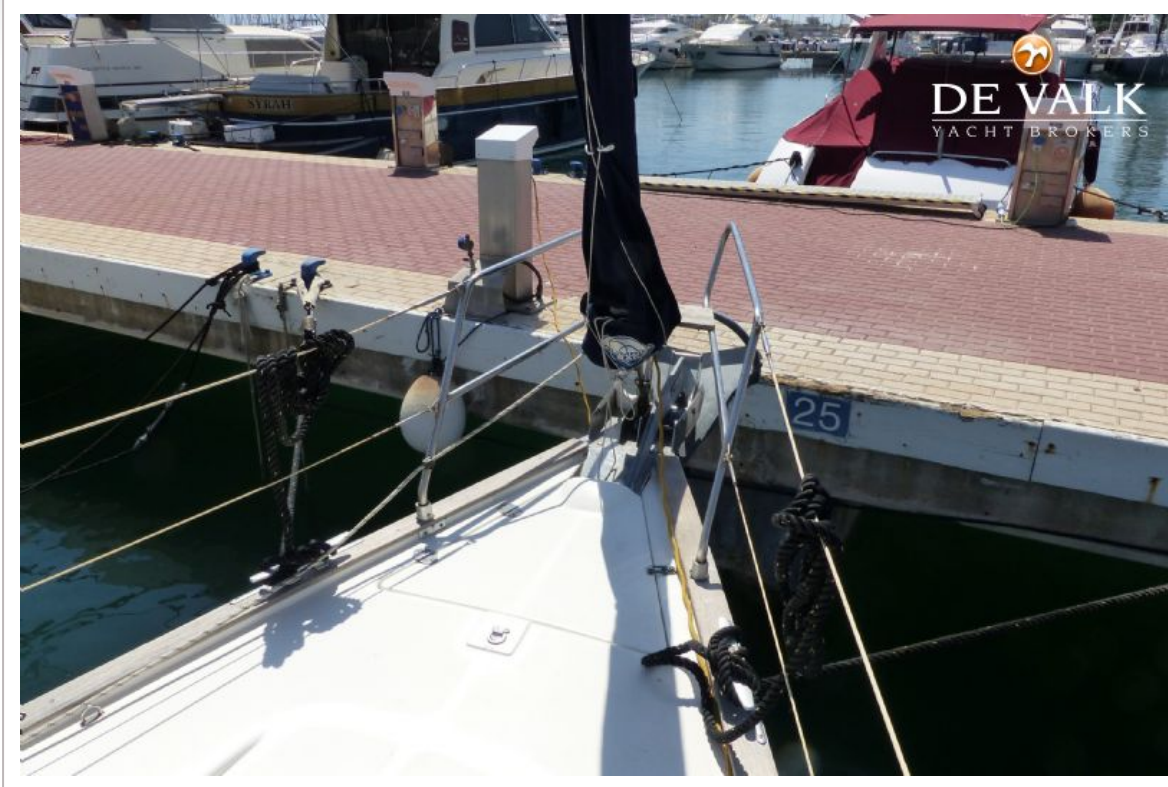
BAVARIA 46 CRUISER



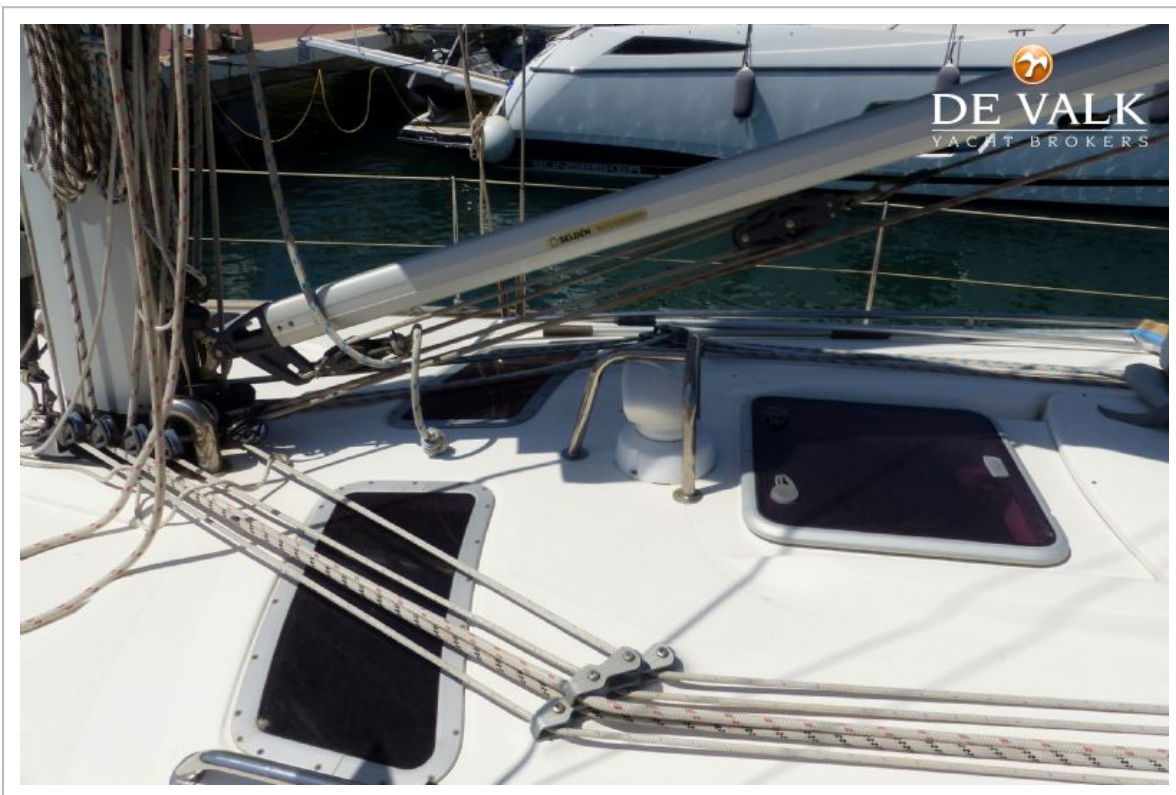
BAVARIA 46 CRUISER



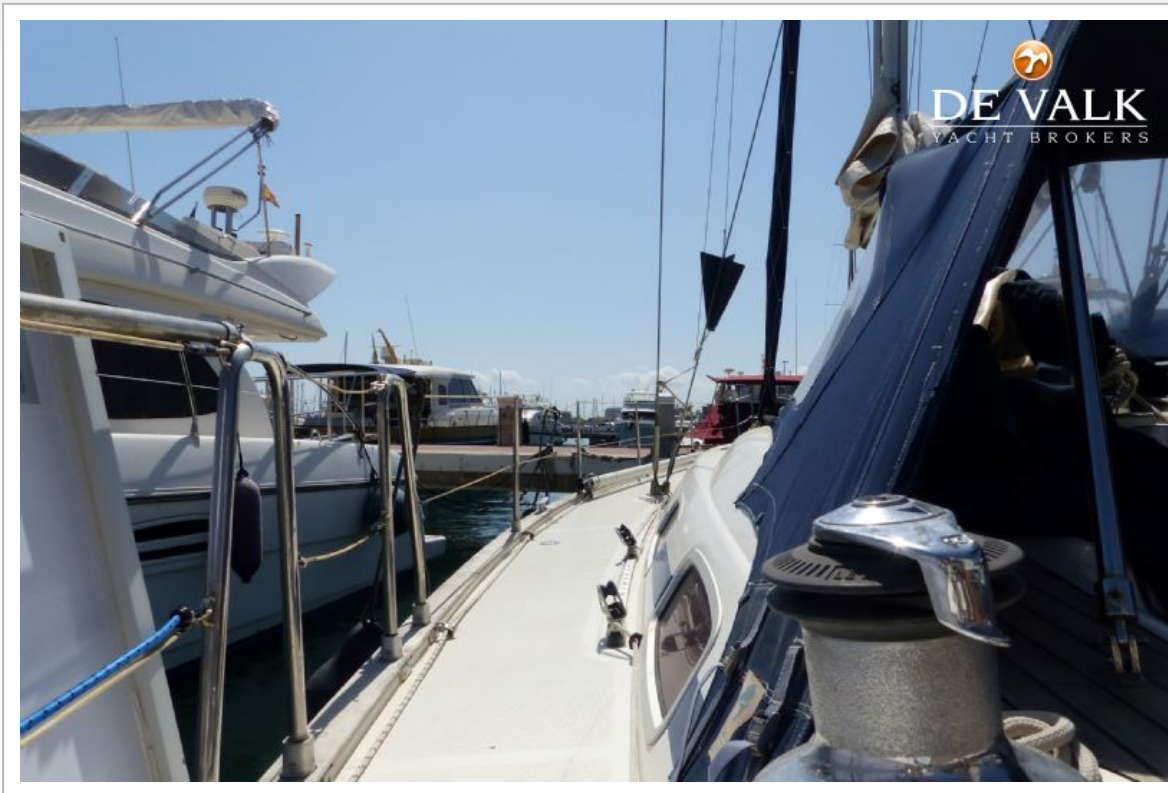
BAVARIA 46 CRUISER



BAVARIA 46 CRUISER



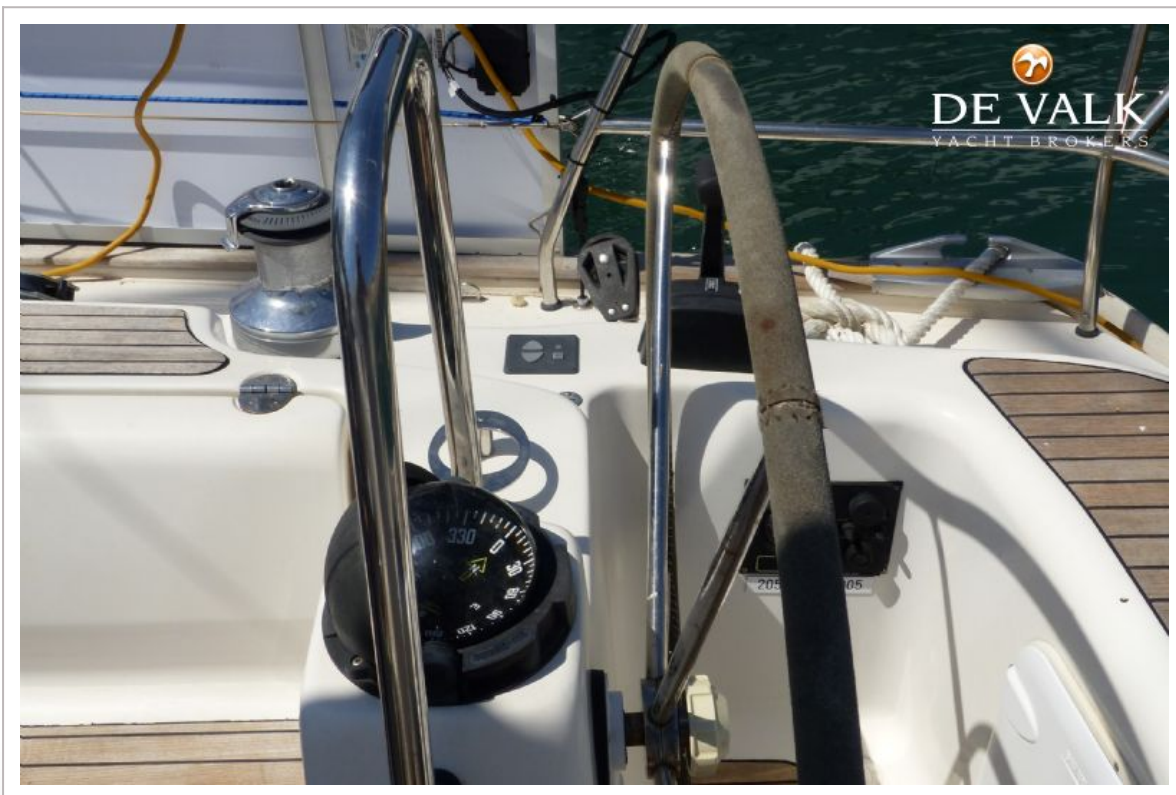
BAVARIA 46 CRUISER



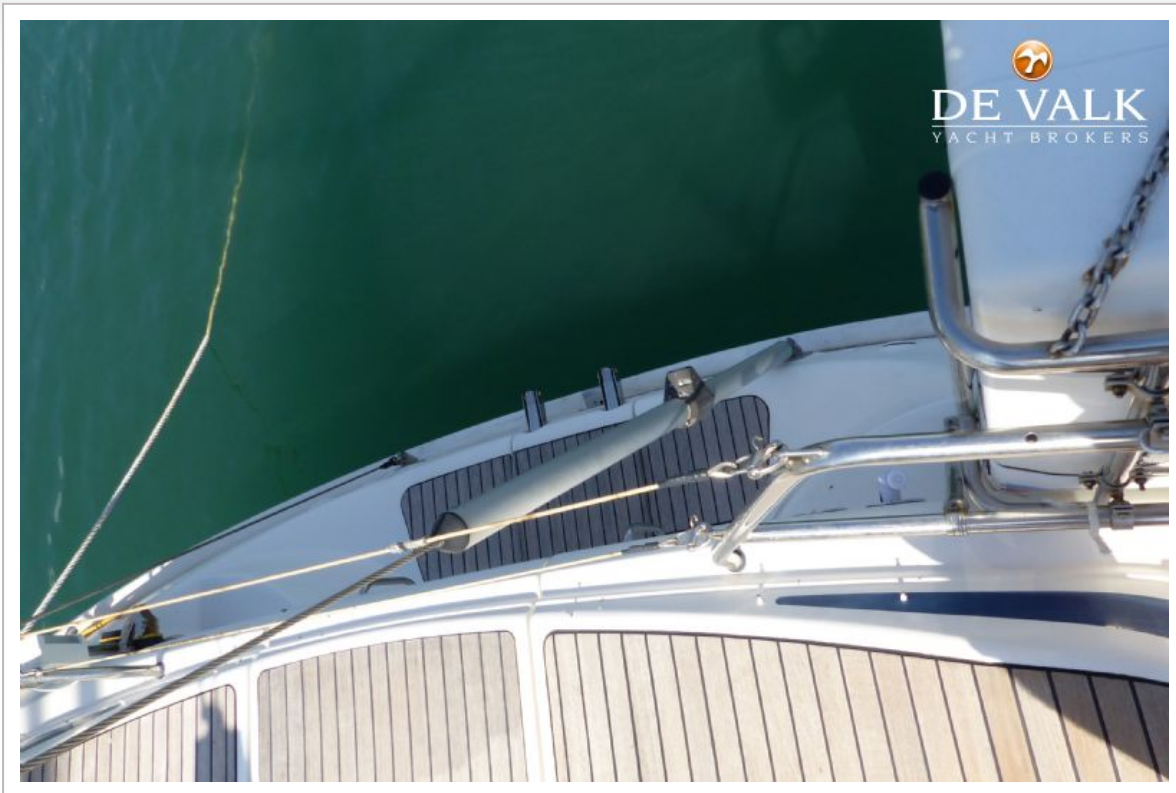
BAVARIA 46 CRUISER



BAVARIA 46 CRUISER



BAVARIA 46 CRUISER



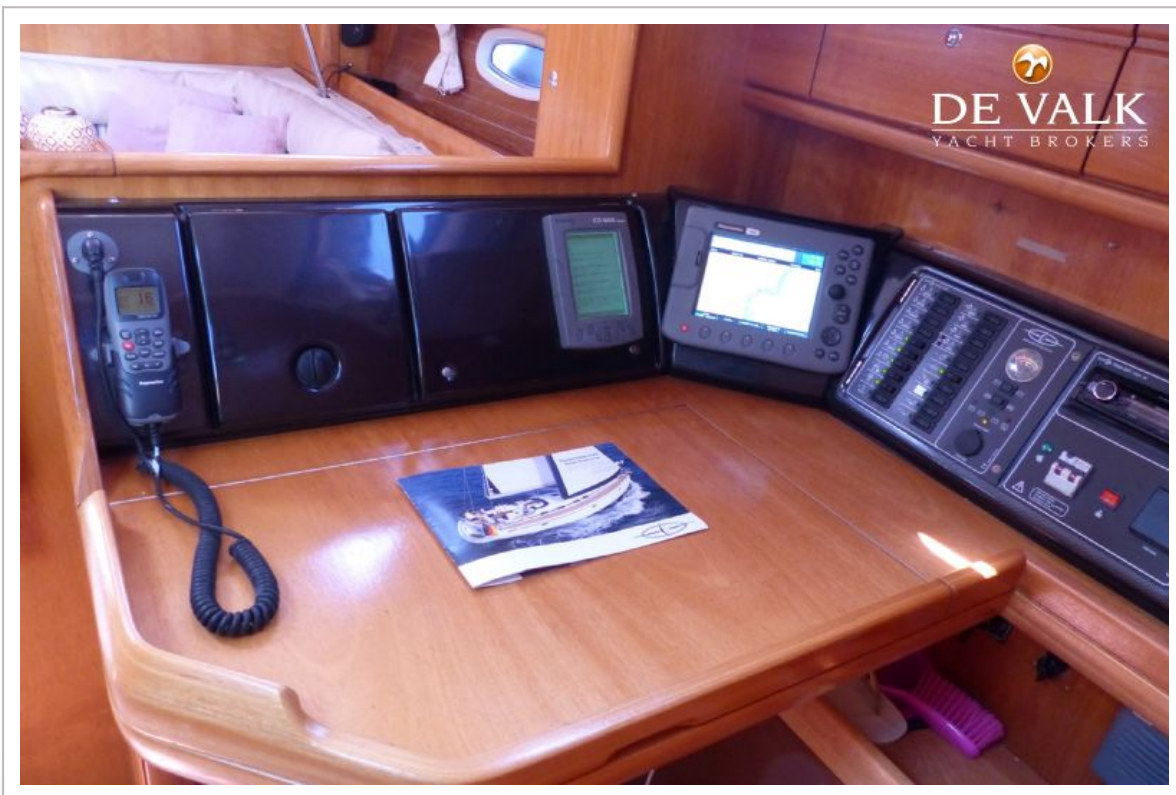
BAVARIA 46 CRUISER



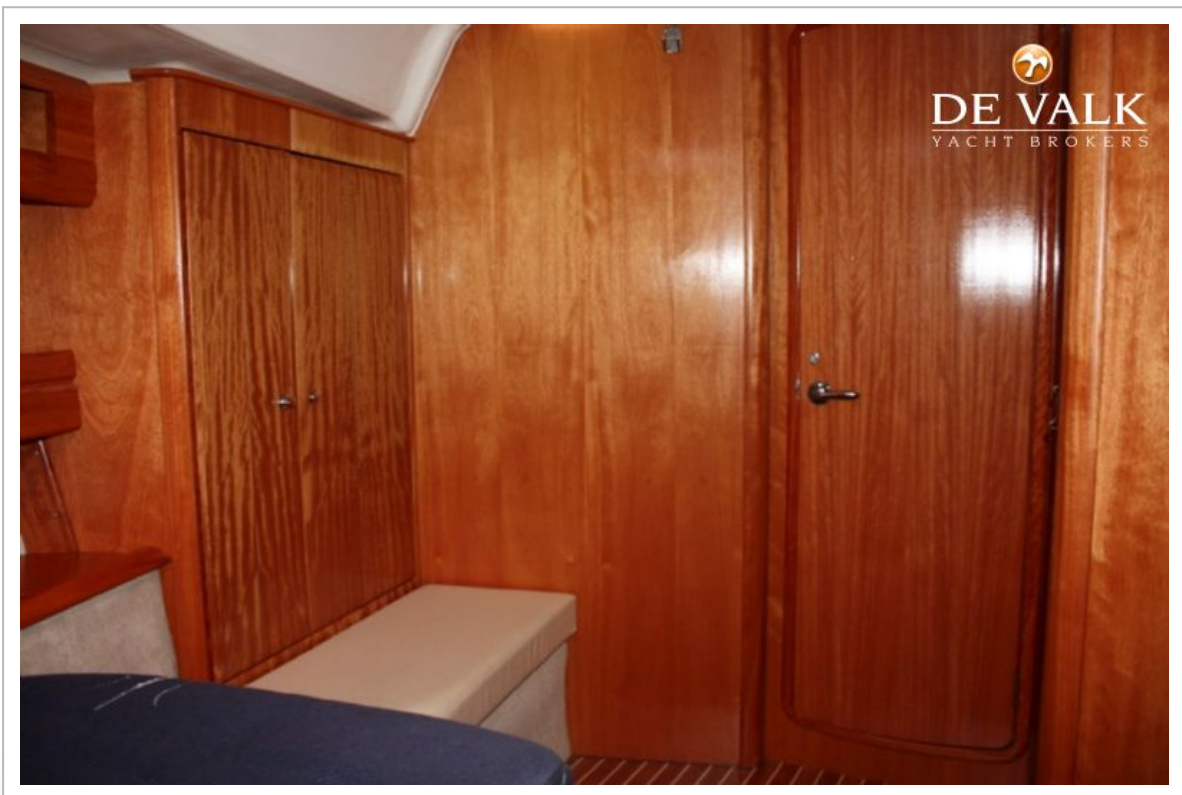
BAVARIA 46 CRUISER



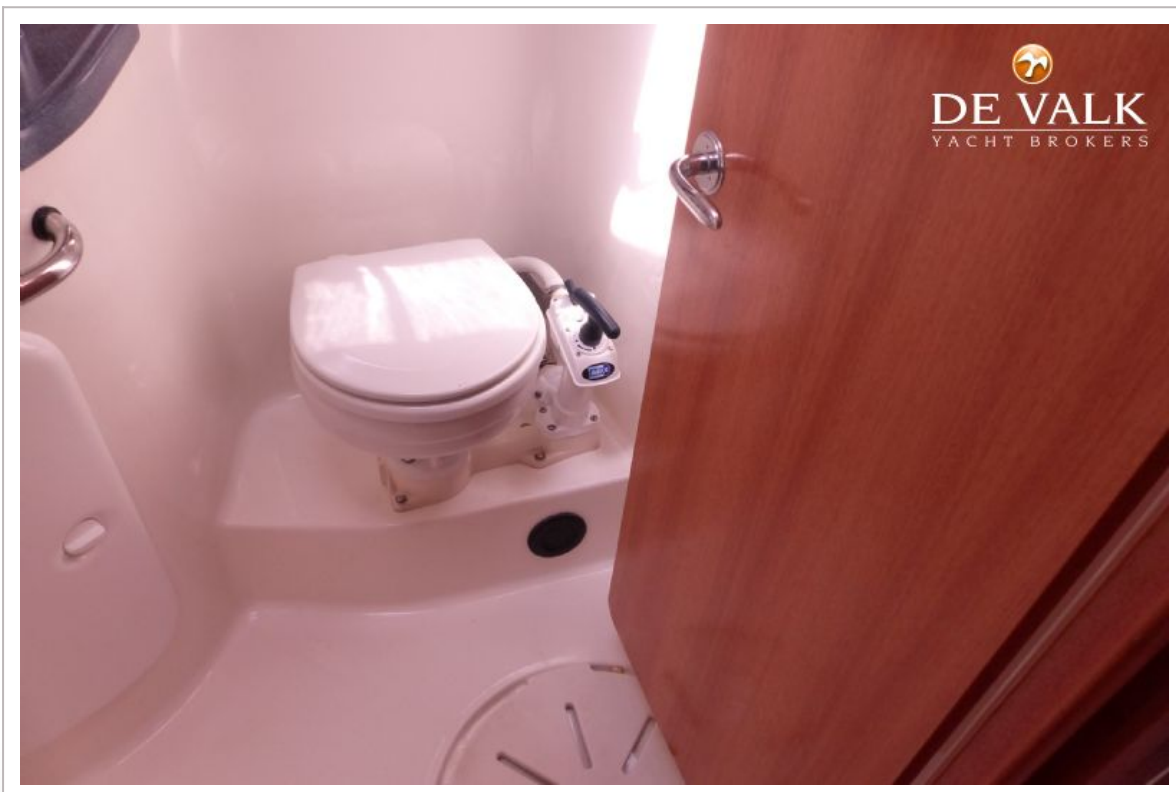
BAVARIA 46 CRUISER



BAVARIA 46 CRUISER



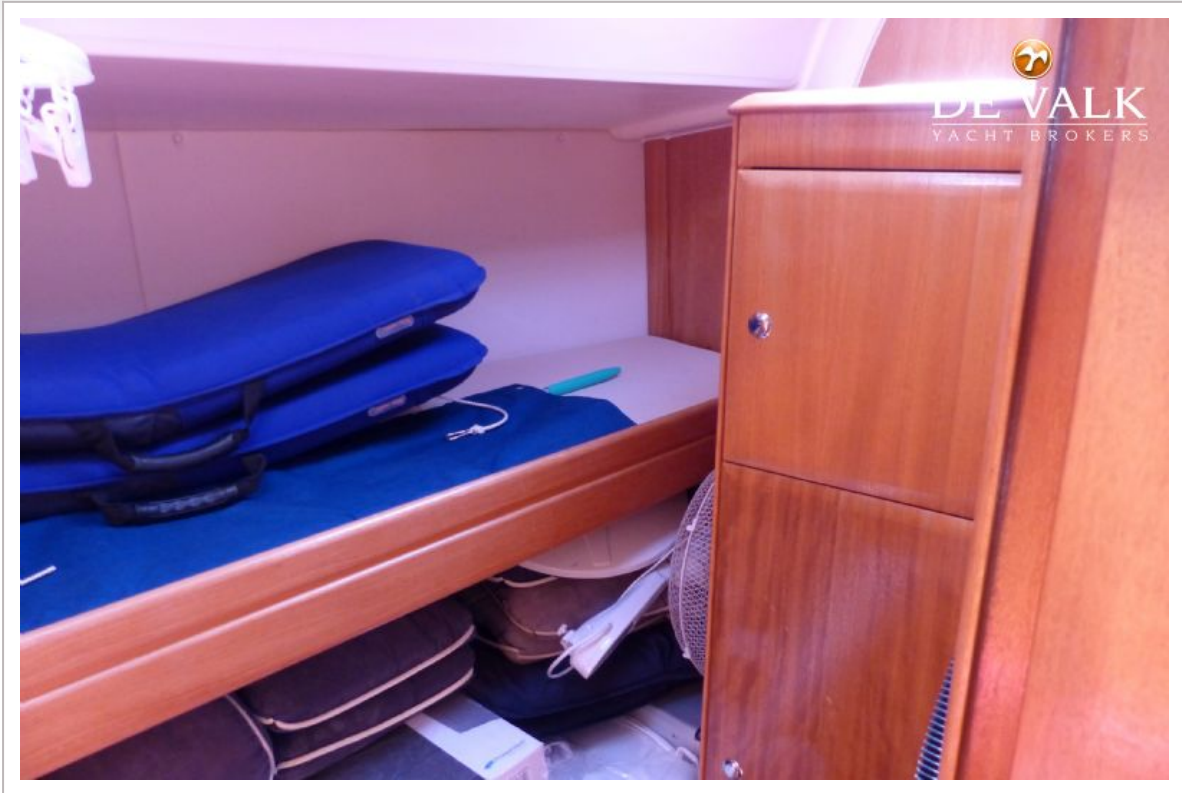
BAVARIA 46 CRUISER



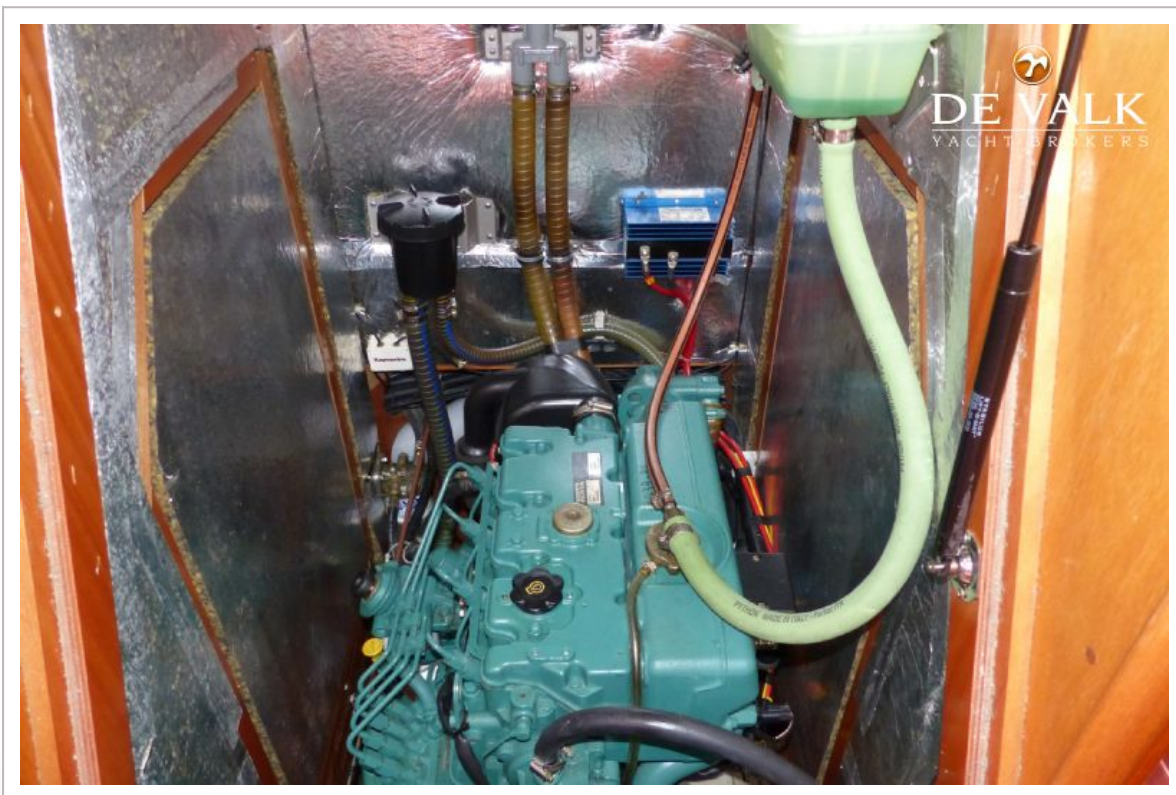
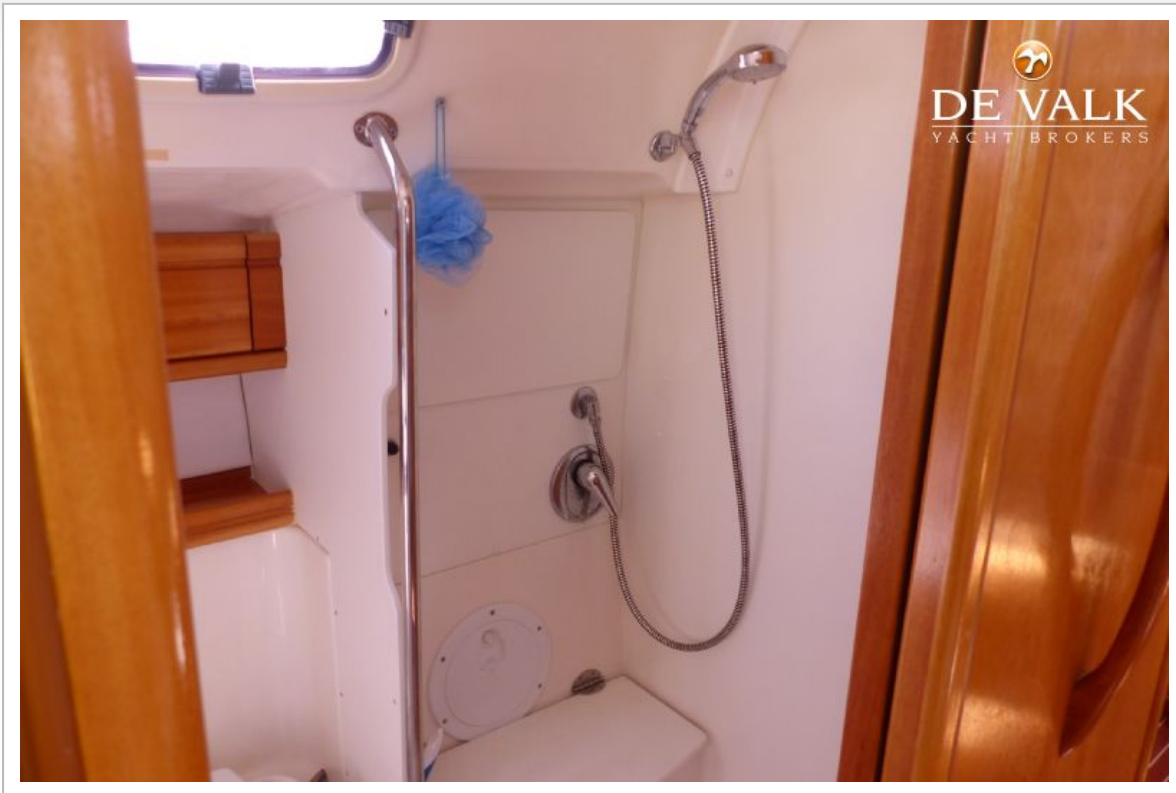
BAVARIA 46 CRUISER



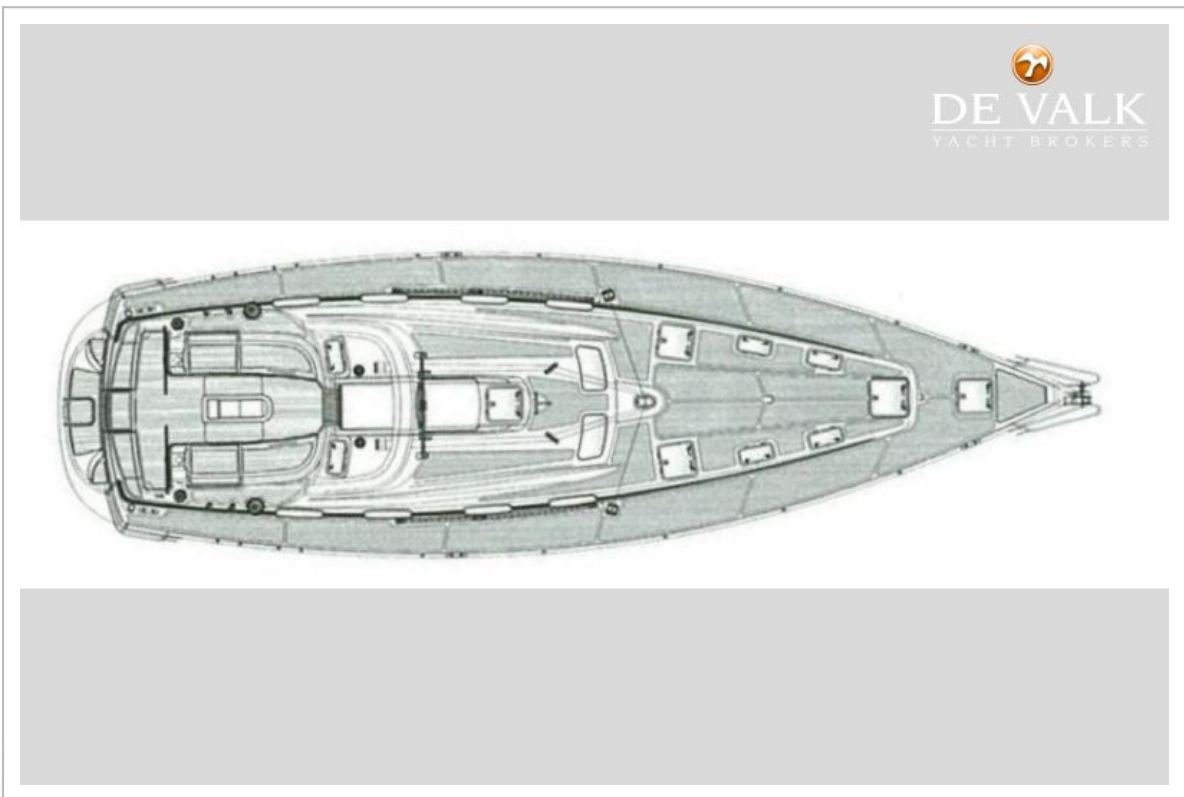
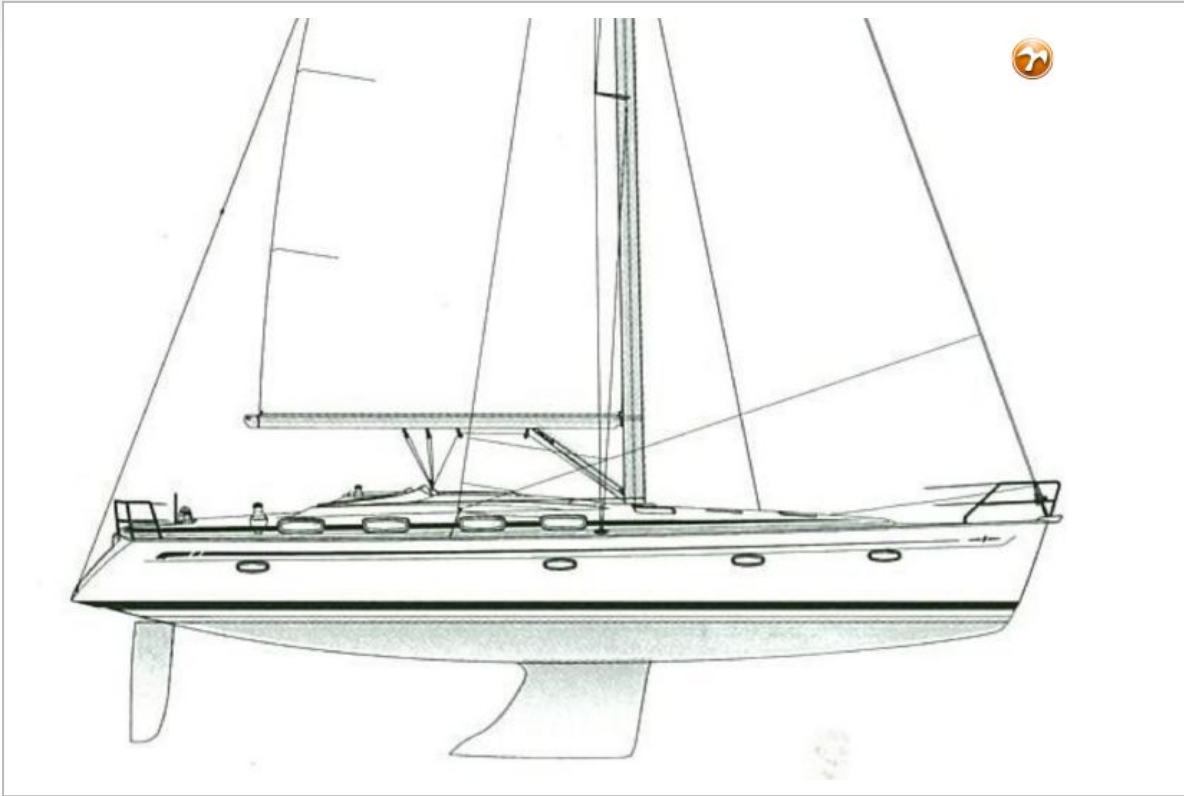
BAVARIA 46 CRUISER



BAVARIA 46 CRUISER



BAVARIA 46 CRUISER



BAVARIA 46 CRUISER


DE VALK
YACHT BROKERS

