



DE VALK
YACHT BROKERS



HALLBERG RASSY 53



DE VALK
YACHT BROKERS

HALLBERG RASSY 53

BROKER'S COMMENTS

What to say about this special Globe trotter with the beautiful black hull and her artistic panel art interior. The quality of a Rassy is well known, technically she is very well maintained and she enjoyed many well documented upgrades the last years. The overall spec is very complete and the new 2005 engine with low hours gives you a fantastic reliable passage maker. The yacht is easy to handle by a couple, but offers great space in comfort for six. The removable artwork inside makes the yacht unique and very cosy. The present mooring in Benemaldena, Spain can be acquired as well.

Willem Koopmans

SPECIFICATIONS

Dimensions	16.44 x 4.64 x 2.29 (m)	Builder	Hallberg-Rassy Marinplast AB
Built	1997	Cabins	3
Material	GRP	Berths	6
Engine(s)	1 x Volvo TAMD 41B diesel	Hp/Kw	145.00 (hp), 106.00 (kw)
Asking price	sold (VAT)	Lying	contact sales office

CONTACT

Sales office	De Valk Costa Blanca	Telephone	+34 96 50 21 569
Address	Costa Blanca Region 03730 Javea Alicante ES	E-mail	costablanca@devalk.nl

DISCLAIMER

These particulars are given in good faith as supplied but cannot be guaranteed.



GENERAL

Model	HALLBERG RASSY 53
Type	sailing yacht
LOA (m)	16,44
LWL (m)	13,36
Beam (m)	4,64
Draft (m)	2,29
Headroom (m)	2,04
Year built	1997
Builder	Hallberg-Rassy Marinplast AB
Country	Sweden
Designer	German Frers
Displacement (t)	23
Ballast (tonnes)	lead 9.5
CE norm	NA
Hull material	GRP
Hull colour	black
Hull shape	round-bilged
Keel type	bulb keel
Superstructure material	GRP
Deck material	GRP
Deck finish	teak Needs attention
Superstructure deck finish	teak
Cockpit deck finish	teak
Antifouling (year)	2016
Dorades	6
Window frame	aluminium
Window material	glass
Fuel tank (litre)	stainless steel 3x, 1400 l in total
Level indicator (fuel tank)	yes
Freshwater tank (litre)	stainless steel 700



Level indicator (freshwater)	yes
Blackwater tank (litre)	2x, 200 l in total
Wheel steering	cable steering
Emergency tiller	yes

ACCOMMODATION

Cabins	3
Berths	6
Interior	mahogany Semi custom with removable art work
Floor	teak and holly
Headroom saloon (m)	2,04
Heating	diesel ducted hot air 2x Webasto Airtop 32
Air-conditioning	reverse cycle airco 2x (aft cabin + saloon/front cabine)
Navigation center	yes
Chart table	yes
Aft Cabin	yes
Dinette	yes
Galley	yes
Sink	stainless steel Double
Cooker	3 burner, Force 10
Oven	Force 10
Gas alarm	yes
Microwave	yes
Fridge	yes
Freezer	yes
Hot water system	220V + engine
Water pressure system	electrical
Manual and/or foot pump	yes
Owners cabin	French bed
Wardrobe	yes
Bathroom	en suite



Toilet	yes
Toilet system	manual
Wash basin	in the bathroom
Shower	en suite
Guest cabin 1	double bed
Wardrobe	yes
Bathroom	shared
Toilet	shared
Toilet system	manual
Wash basin	in the bathroom
Shower	shared
Guest cabin 2	bunk bed
Wardrobe	yes
Bathroom	shared
Toilet	shared
Toilet system	manual
Wash basin	in the bathroom
Shower	shared
Washing machine	yes

MACHINERY

No of engines	1
Make	Volvo
Type	TAMD 41B
HP	145
kW	106,00
Fuel	diesel
Year installed	2005
Maximum speed (kn)	9,50
Cruising speed (kn)	8,00
Engine hours	400



HALLBERG RASSY 53

Engine cooling system	freshwater heat exchanger
Drive	shaft
Shaft seal	Deep Sea seal Gland
Bowthruster	electric Vetus
Exhaust	watercooled
Propeller type	folding
Propeller blades	3 blades
Propeller shaft material	stainless steel Shaft Aquadrive 45 mm
Manual bilge pump	yes
Electric bilge pump	yes
Bilge alarm	yes
Electrical installation	12/24/228 volt
Generator	wet exhaust Onan, 8kW
Batteries	yes
Start battery	1x 135Ah (2013)
Service battery	405AH/24V (2017)
Generator battery	1x 135Ah
Battery monitor	yes
Battery charger	1x 12V/1x 24V Mastervolt (Nov. 2017)
Inverter	24 volt
Shorepower	with cable
Watermaker	MT fresh water AB 120l/h
Extra info	New turbo 2016

NAVIGATION

Compass	yes
Depth sounder	Autohelm ST80
Log	Autohelm ST80
Windset	Autohelm ST80
Repeater	yes
VHF	Icom



Autopilot	Autohelm ST80
Radar	Raymarine 4kW
Radar/GPS/plotter	Raymarine E125 touch. Outside Raymarine E7
Navtex	Nasa Target
Navigation lights	yes
Extra info	ST80 LCD's show some defaults
Extra info	SSB Icom M810 with isolated backstay

EQUIPMENT

Fixed hardtop	yes
Bimini	yes
Cockpit cushions	yes
Cockpit table	yes
Bathing platform	yes
Boarding ladder	yes
Gangway	2x (front/aft)
Deck shower	yes
Anchor	Stainless steel
Anchor chain	50m, calibrated
Anchor 2	Twin bow rollers
Windlass	electrical Lofrans 1500Watt
Dinghy	Aquaparx 330 (Sept. 2017)
Outboard	Yamaha 8hp
Davits	yes
Davits controls	
Life raft	container Arimar, new (July 2017)
Life raft (pers)	8
Safety lines on deck	yes
Radar reflector	yes
Fenders	yes
Mooring lines	yes



Spare parts	yes
Tools	yes
TV	HD
Radio-cd player	2x
DVD player	yes
Cockpit speakers	yes
Speakers in salon	yes
Fire extinguisher	3x (2012)
Extinguisher in engine room	Last survey 2012
Extra info	Fire alarm

RIGGING

Standing rigging	wire
Brand mast	Seldén
Material mast	aluminium
Mainsail	2003
Stoway mast	yes
Cutterstay	yes
Genoa I	110% (2003)
Spinnaker	Hardly used
Stormjib	yes
Boomvang	Refit 2015
Primary sheet winch	2x Lewmar electric CST66
Secondary sheet winch	2x Lewmar electric CST48
Halyard winches	Lewmar CST44
Spi-pole	In combination with 2x Lewmar C8 polelift winches



HALLBERG RASSY 53



BROKERAGE | CHARTER | BERTHS | FINANCE | INSURANCE | YACHT MANAGEMENT



**This yacht will be auctioned,
for further details please visit www.devalk.nl**

**Dit schip zal worden geveild,
voor meer informatie gaat u naar www.devalk.nl**

**Dieses Schiff wird versteigert,
für weitere informationen besuchen Sie www.devalk.nl**

WWW.DEVALK.NL



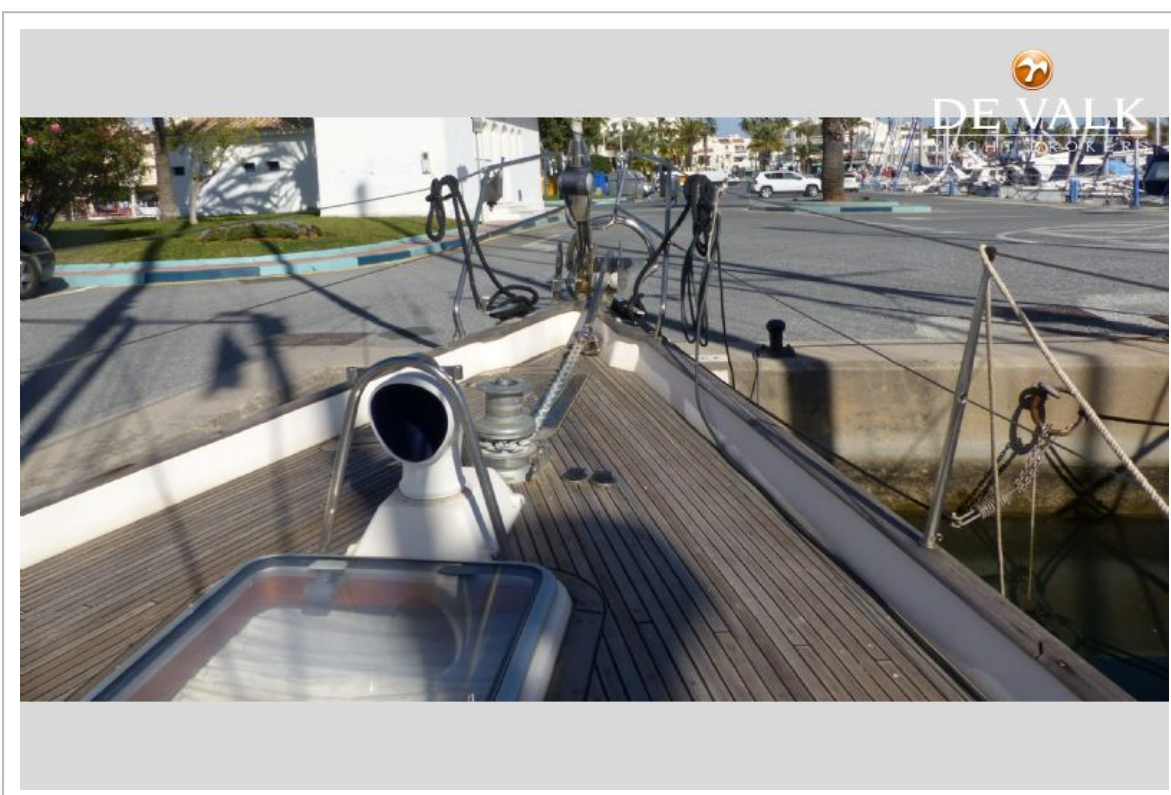
HALLBERG RASSY 53



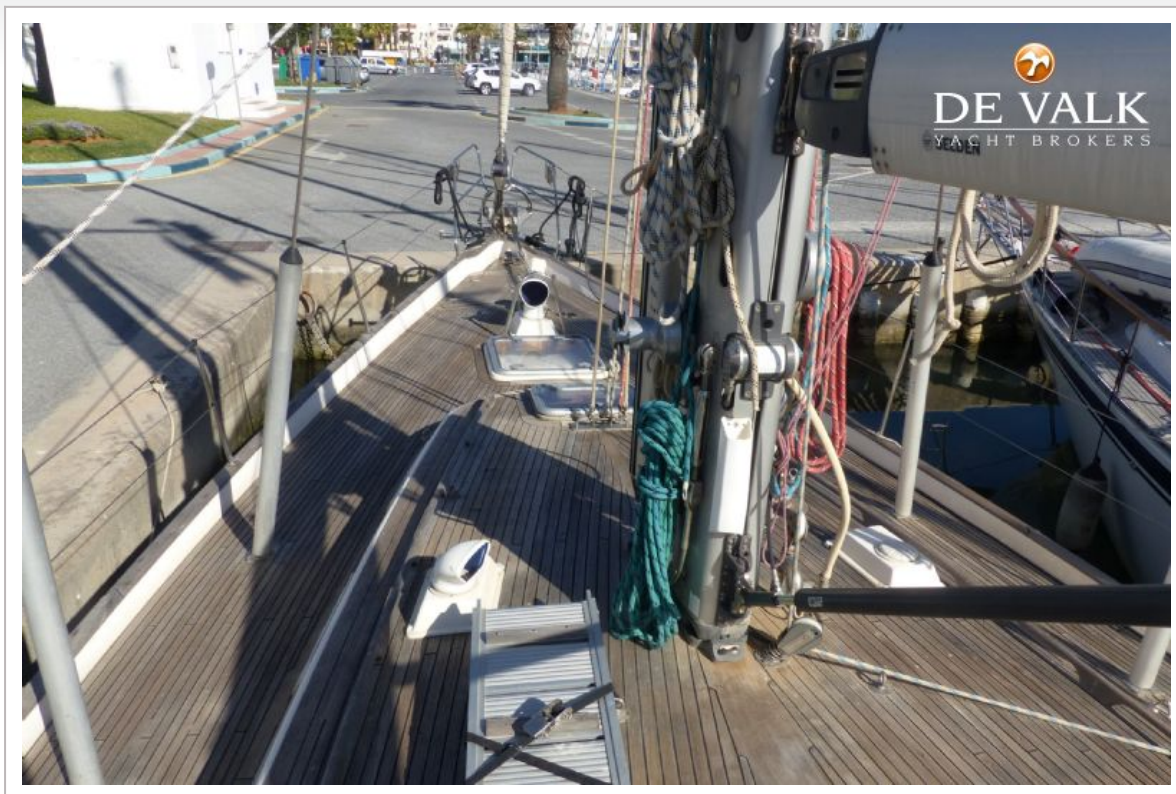
HALLBERG RASSY 53



HALLBERG RASSY 53



HALLBERG RASSY 53



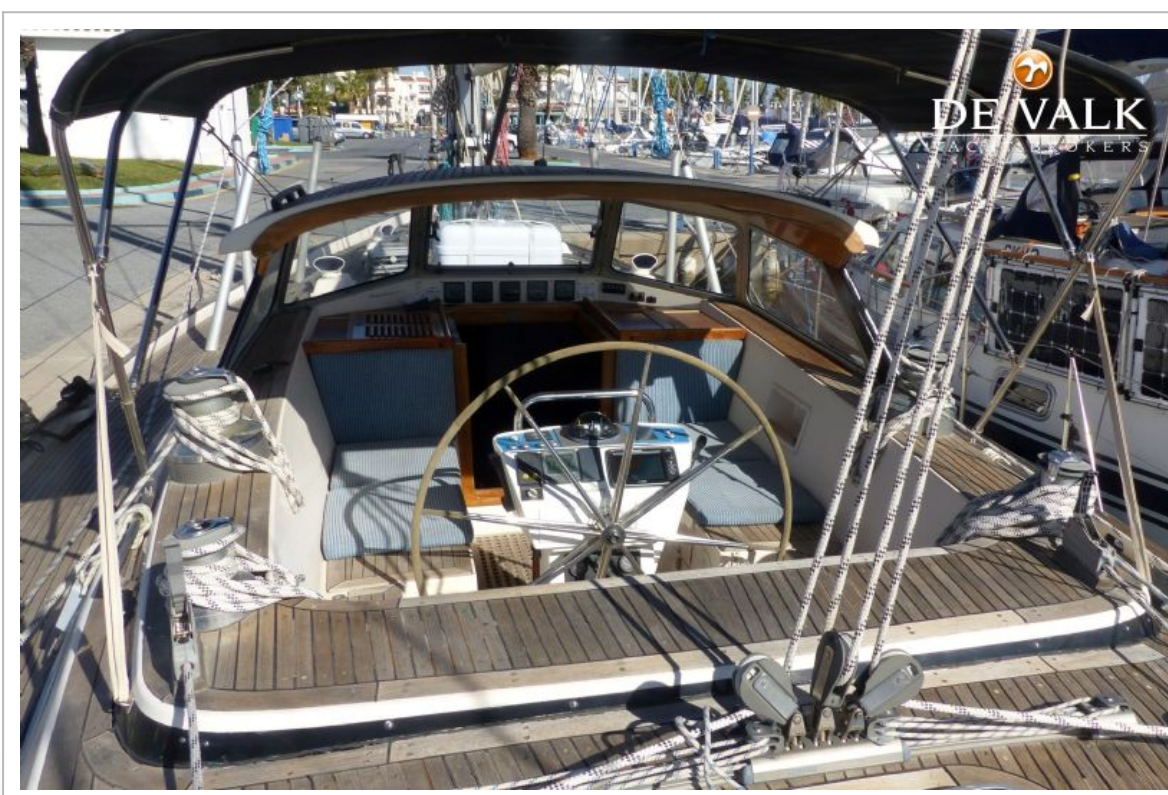
HALLBERG RASSY 53



HALLBERG RASSY 53



HALLBERG RASSY 53



HALLBERG RASSY 53



HALLBERG RASSY 53



HALLBERG RASSY 53



HALLBERG RASSY 53



HALLBERG RASSY 53



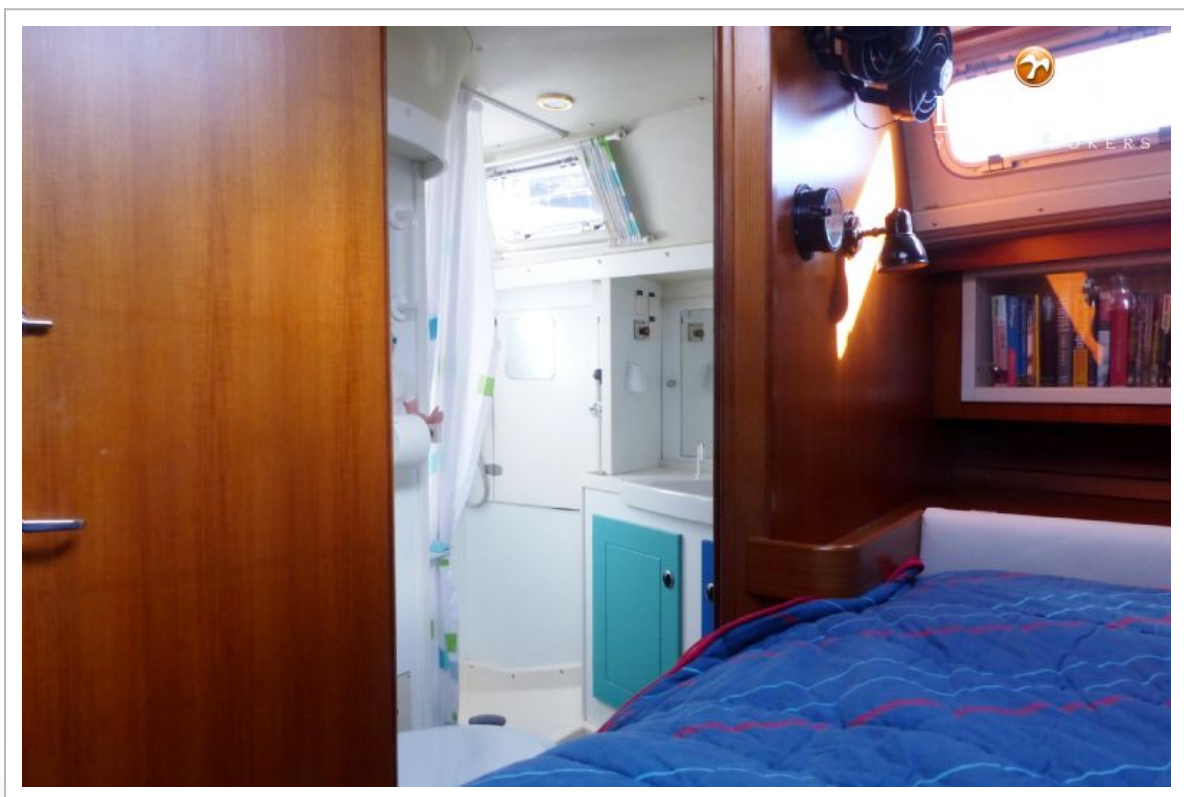
HALLBERG RASSY 53



HALLBERG RASSY 53



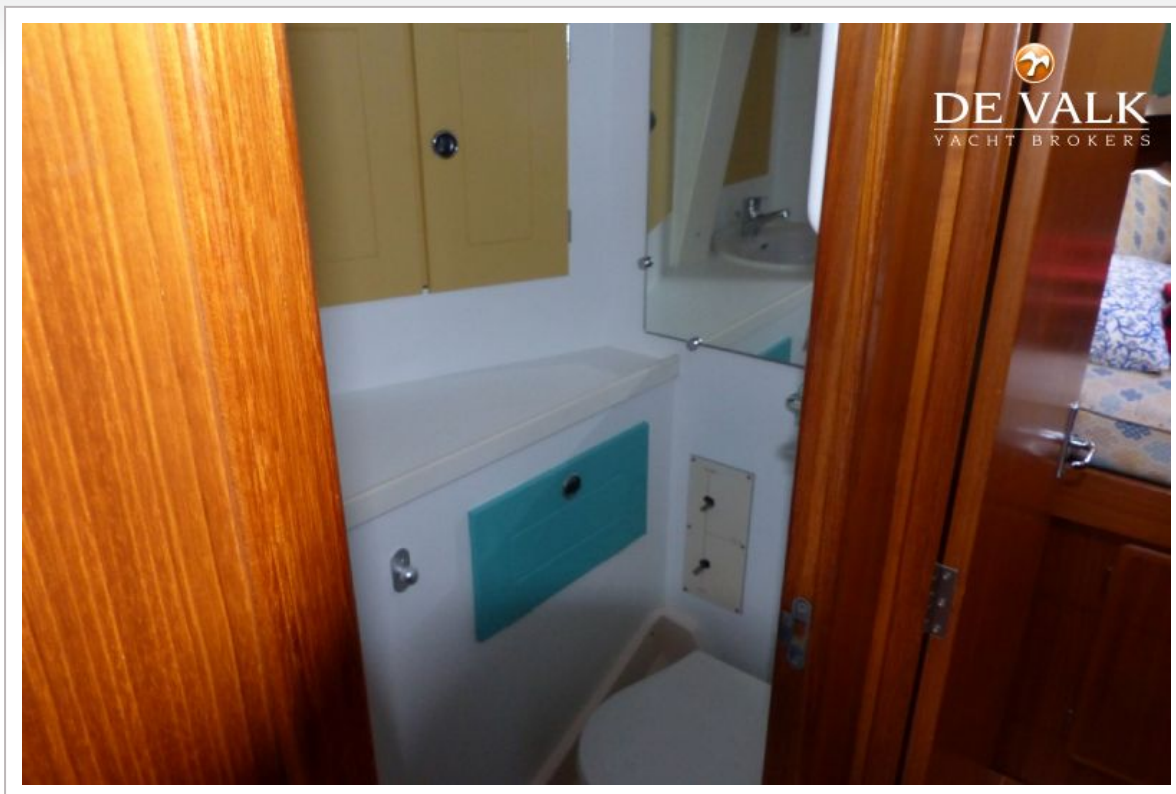
HALLBERG RASSY 53



HALLBERG RASSY 53



HALLBERG RASSY 53



HALLBERG RASSY 53

