



DE VALK
YACHT BROKERS



BENETEAU OCEANIS CLIPPER 473



DE VALK
YACHT BROKERS

BENETEAU OCEANIS CLIPPER 473

BROKER'S COMMENTS

This Beneteau Oceanis Clipper 473 is in many ways the ideal yacht for comfortable family cruising and longer stay on board. Her standard equipment list is impressive and her inner 3 cabin (before 4) layout is spacious, light and comfortable. She is well maintained and kept fully up to date. Mast and rigging replaced in 2011. Her large cockpit with twin steering allows perfect access, maximum of movement and optimum visibility for the helmsman and guests. This is a great yacht, offered at a very competitive price. Will arrive in Valencia in May/June 2018.

Willem Koopmans

SPECIFICATIONS

Dimensions	14.30 x 4.31 x 1.70 (m)	Builder	Beneteau
Built	2002	Cabins	3
Material	GRP	Berths	6
Engine(s)	1 x Yanmar 4JH3-TE-98 diesel	Hp/Kw	75.00 (hp), 55.13 (kw)
Asking price	sold (VAT)	Lying	contact sales office

CONTACT

Sales office	De Valk Costa Blanca	Telephone	+34 96 50 21 569
Address	Costa Blanca Region 03730 Javea Alicante ES	E-mail	costablanca@devalk.nl

DISCLAIMER

These particulars are given in good faith as supplied but cannot be guaranteed.



GENERAL

Model	BENETEAU OCEANIS CLIPPER 473
Type	sailing yacht
LOA (m)	14,30
Beam (m)	4,31
Draft (m)	1,70
Headroom (m)	2,00
Year built	2002
Builder	Beneteau
Country	France
Designer	Finot / Conq
Displacement (t)	11
Ballast (tonnes)	cast iron
Hull material	GRP
Hull colour	white
Hull shape	round-bilged
Keel type	fin keel
Superstructure material	GRP
Deck material	GRP
Deck finish	non-skid moulded in
Superstructure deck finish	non-skid moulded in
Antifouling (year)	2018 (March)
Dorades	2
Window frame	aluminium
Fuel tank (litre)	polyethylene 235
Level indicator (fuel tank)	Not functioning
Freshwater tank (litre)	polyethylene 4x 200
Blackwater tank (litre)	polyethylene 30
Blackwater tank extraction	pump
Wheel steering	cable steering Double
Emergency tiller	yes



Extra info

Hull was polished March 2018

ACCOMMODATION

Cabins	3
Berths	6
Interior	mahogany
Heating	diesel ducted hot air
Chart table	yes
Aft Cabin	2
Dinette	yes
Galley	yes
Countertop	yes
Sink	stainless steel Double
Cooker	calor gas 3 burner
Oven	yes
Gas alarm	yes
Fridge	yes
Hot water system	220V + engine
Water pressure system	electrical
Manual and/or foot pump	Seawater
Crockery	yes
Owners cabin	double bed
Wardrobe	hanging and shelves 2
Bathroom	shared
Toilet	shared
Toilet system	yes
Wash basin	at the toilet
Shower	shared
Guest cabin 1	yes
Bed length (m)	2.05
Wardrobe	shelves



BENETEAU OCEANIS CLIPPER 473

Bathroom	shared
Toilet	shared
Wash basin	at the toilet
Shower	shared
Guest cabin 2	double bed
Bed length (m)	2.05
Wardrobe	shelves
Bathroom	shared
Toilet	shared
Wash basin	at the toilet
Shower	shared
Washing machine	Daewoo, front-load, mini

MACHINERY

No of engines	1
Make	Yanmar
Type	4JH3-TE-98
HP	75,00
kW	55,13
Fuel	diesel
Year installed	2002
Maximum speed (kn)	9
Cruising speed (kn)	6
Consumption (l/hr)	3
Range (nm)	470
Engine hours	6370
Engine cooling system	freshwater heat exchanger
Drive	shaft
Engine controls	bowden cable
Exhaust	watercooled
Propeller type	fixed



BENETEAU OCEANIS CLIPPER 473

Propeller shaft material	stainless steel
Shaft lubrication	water
Manual bilge pump	yes
Electric bilge pump	yes
Batteries	2x 480 AGM
Battery monitor	yes
Battery charger	yes
Wind generator	yes
Solar panel	2x 150 Watt
Shorepower	with cable
Auto positioning system	yes

NAVIGATION

Compass	2x
Depth sounder	yes
Log	Raymarine ST60 tridata
Windset	Raymarine ST60
VHF	Icon IC-M323, 2017
VHF handheld	yes
Autopilot	Raymarine ST6002
Rudder angle indicator	yes
Radar	Furuno 1623
GPS	Garmin Map 172C
Plotter	Garmin Map 172C + Raymarine/AIS outside
Navtex	2017
Electronic chart(s)	yes
AIS receiver	Receiver/transmitter
EPIRB	2017
Searchlight	yes

EQUIPMENT



BENETEAU OCEANIS CLIPPER 473

Sprayhood	yes
Cockpit cover	yes
Bimini	yes
Cockpit table	Fixed
Bathing platform	yes
Boarding ladder	stainless steel
Transom door	yes
Deck shower	yes
Anchor	Delta (copy)
Anchor chain	80m galvanized steel
Anchor 2	Bruce
Other ground tackle	Danforth anchor with chain/rope 30 m
Windlass	electrical
Capstan	yes
Dinghy	rigid inflatable Zodiac 260 Cadet (hardly used)
Outboard	Yamaha 4 stroke, 4hp (hardly used)
Railing side opening gates	2
Pushpit	yes
Pulpit	yes
Life raft	container New, 2017
Last life raft survey	2017
Lifebuoy	yes
Safety lines on deck	yes
Radar reflector	yes
Fenders	yes
Mooring lines	yes
Spare parts	yes
TV	1
Radio-cd player	yes
DVD player	yes
Cockpit speakers	yes
Speakers in salon	yes



Clock - barometer

Clock

Fire extinguisher

yes

Latest extinguisher survey

2017

RIGGING

Rigging

sloop Upgraded in 2011

Standing rigging

wire

Brand mast

Seldén Upgraded in 2011

Material mast

aluminium

Stoway mast

yes

Genoa furler

2

Gennaker

1

Reefing System

main in-mast furling

Backstay adjuster

yes

Boomvang

gasspring

Primary sheet winch

Lewmar 44 ST

Genoa sheetwinches

Lewmar 54 ST

Multifunctional winches

halyard/sheet winches



BENETEAU OCEANIS CLIPPER 473



BENETEAU OCEANIS CLIPPER 473



BENETEAU OCEANIS CLIPPER 473



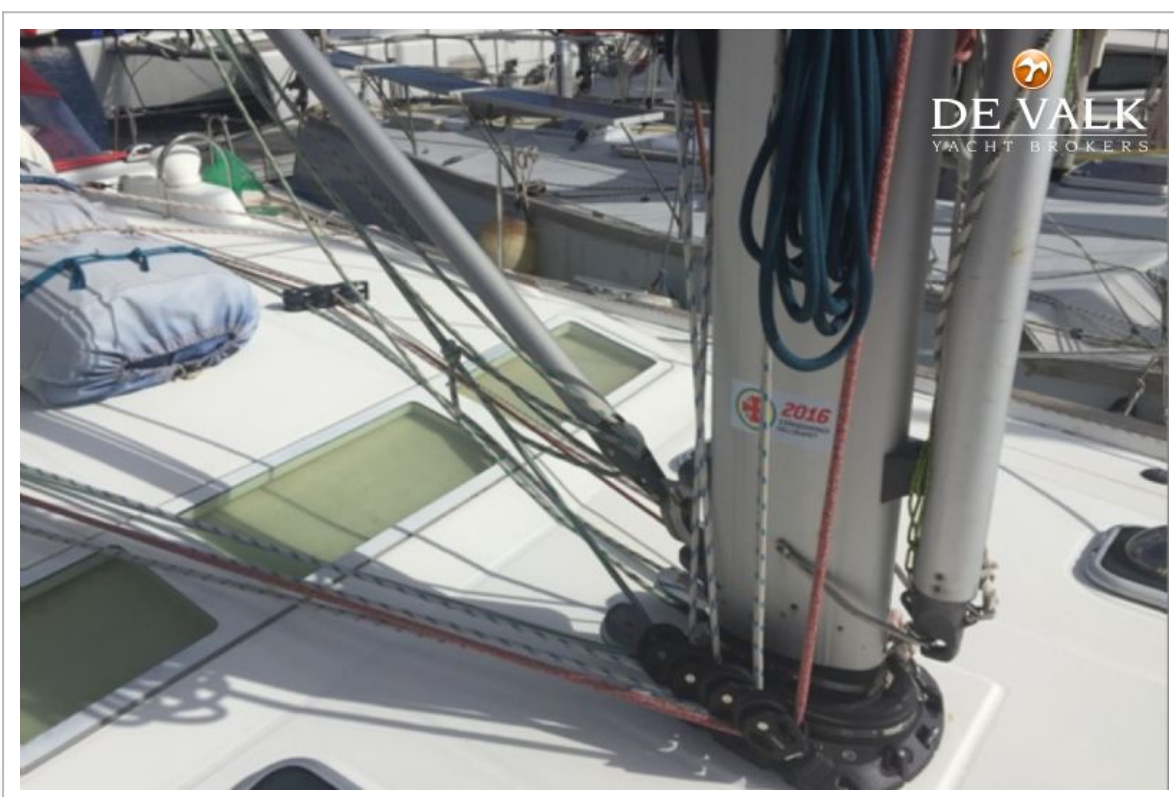
BENETEAU OCEANIS CLIPPER 473



BENETEAU OCEANIS CLIPPER 473



BENETEAU OCEANIS CLIPPER 473





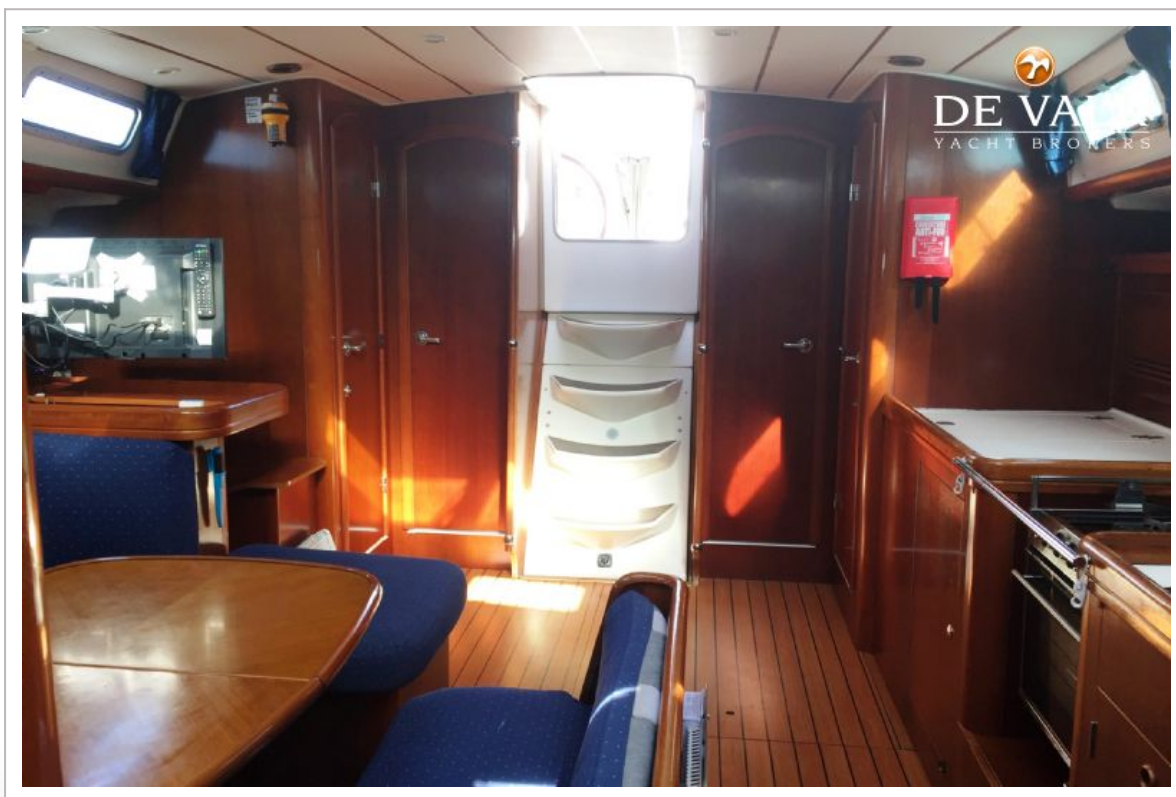
BENETEAU OCEANIS CLIPPER 473



BENETEAU OCEANIS CLIPPER 473



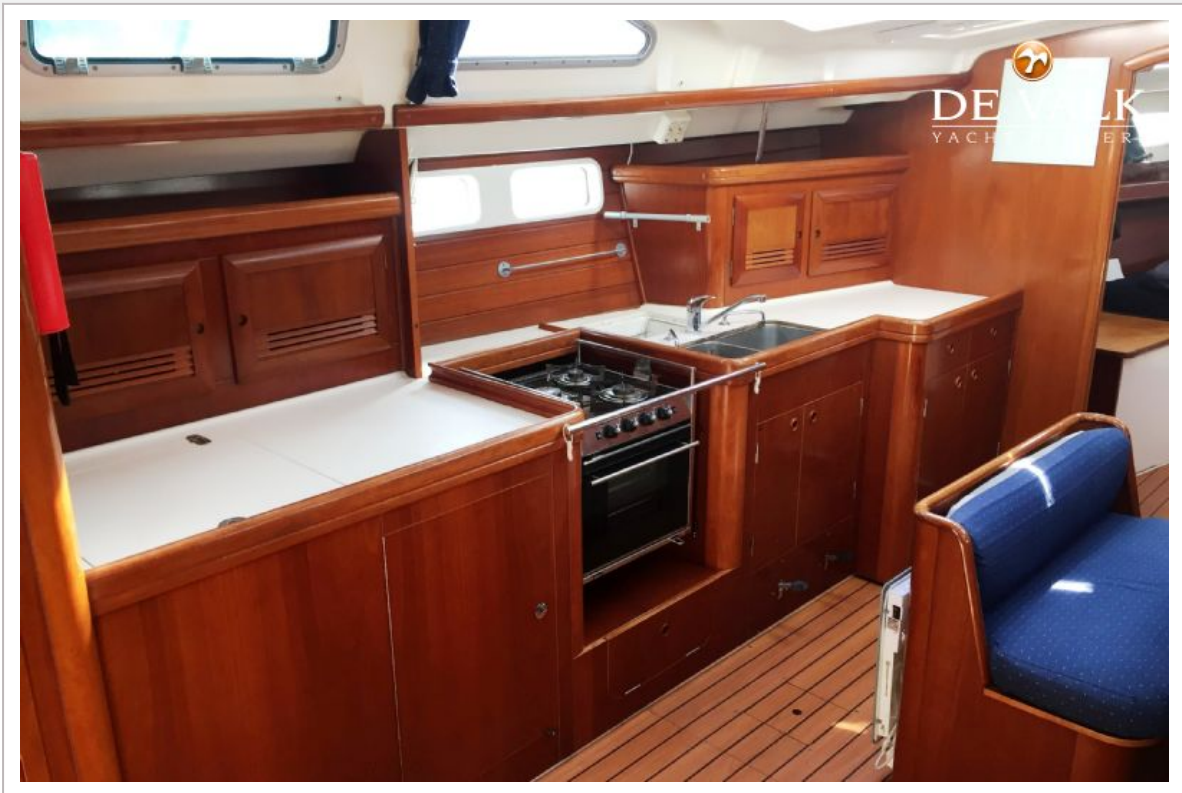
BENETEAU OCEANIS CLIPPER 473



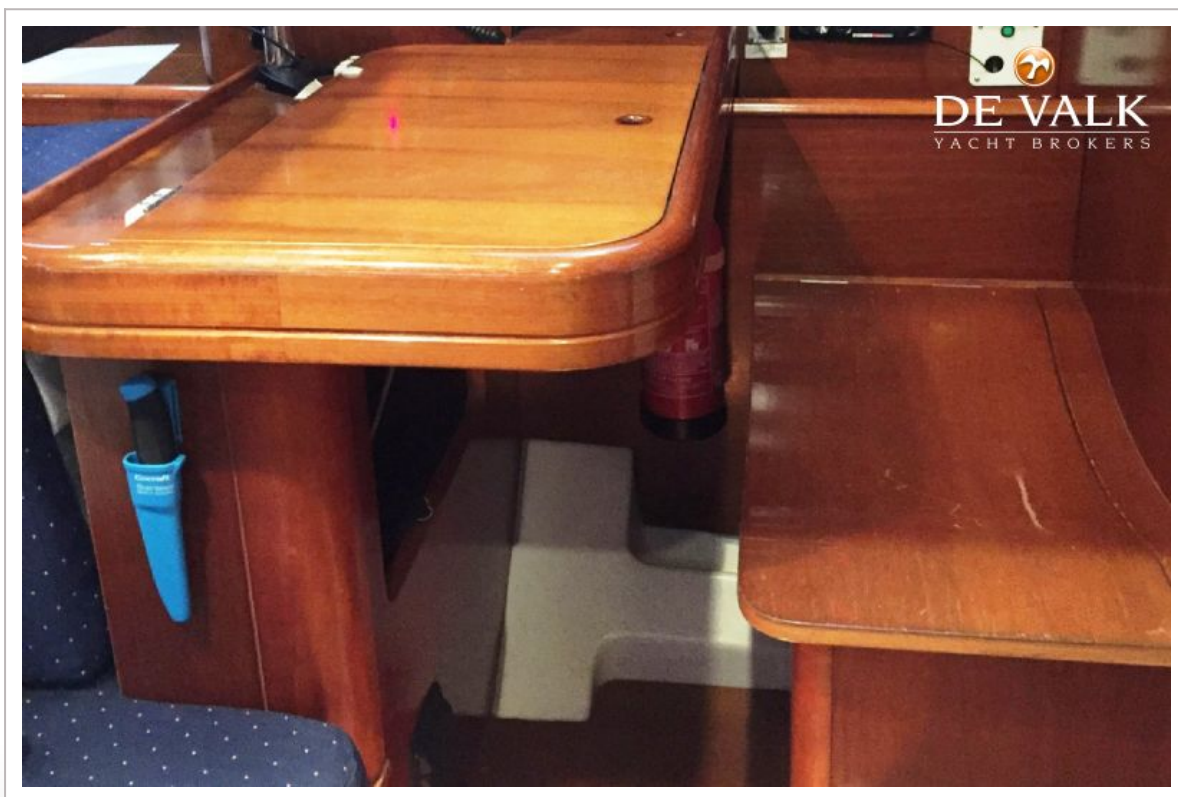
BENETEAU OCEANIS CLIPPER 473



BENETEAU OCEANIS CLIPPER 473



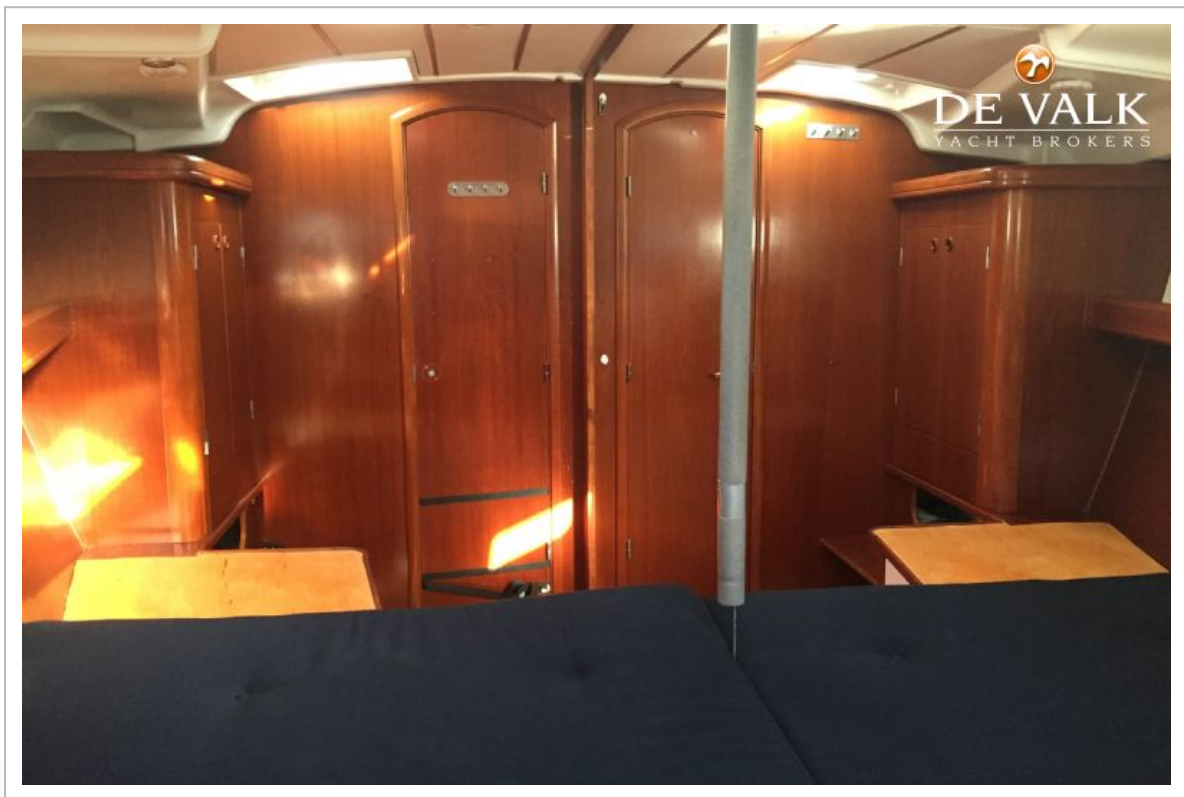
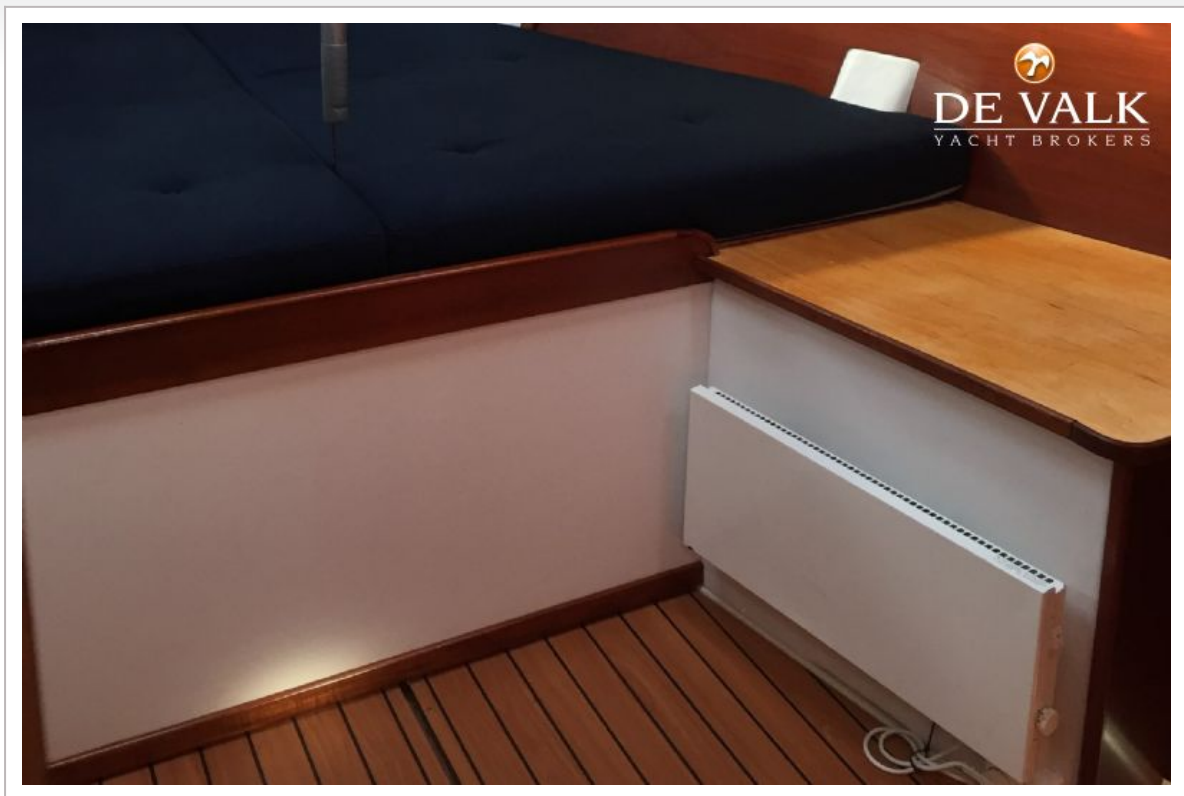
BENETEAU OCEANIS CLIPPER 473



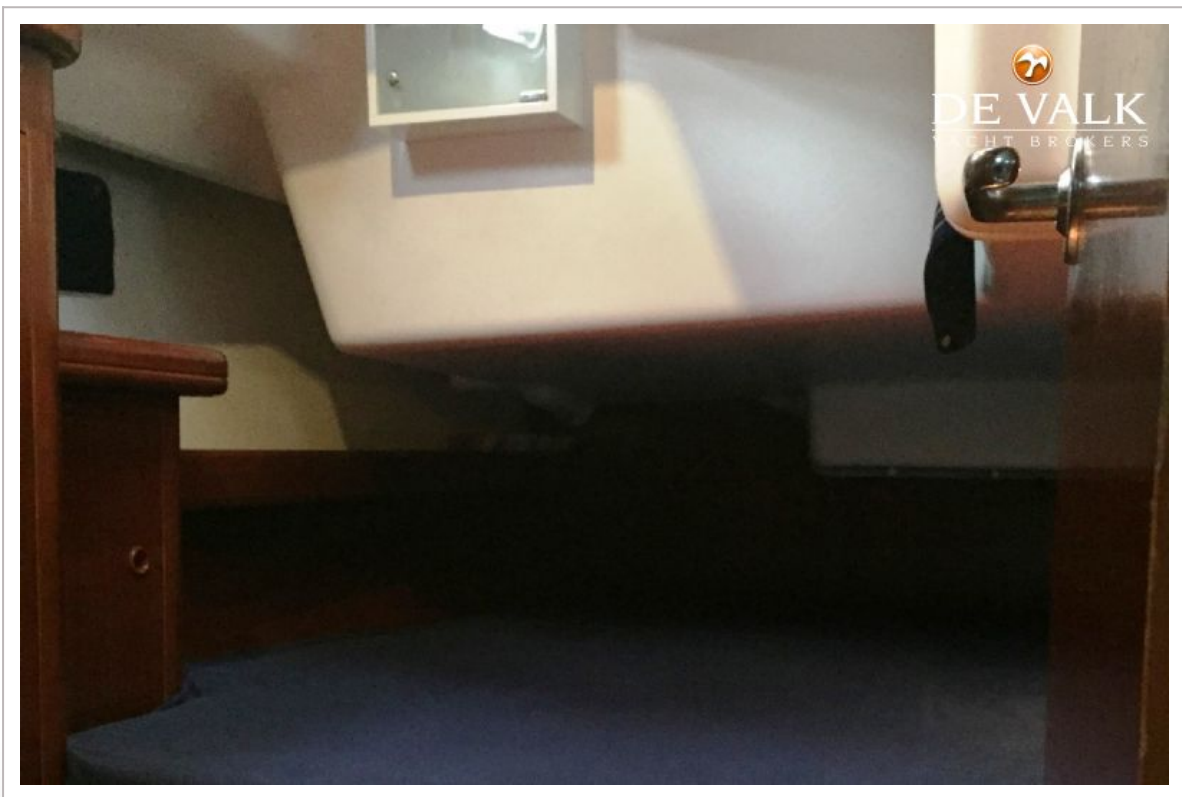
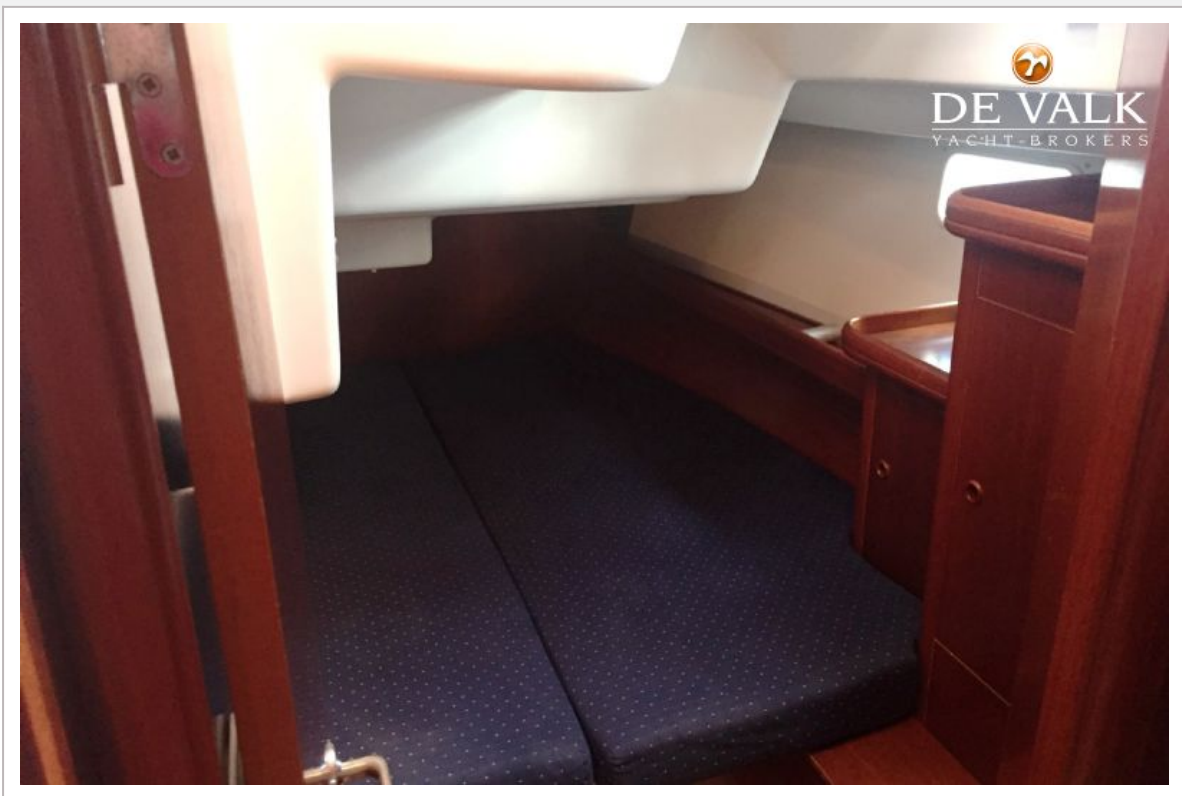
BENETEAU OCEANIS CLIPPER 473



BENETEAU OCEANIS CLIPPER 473



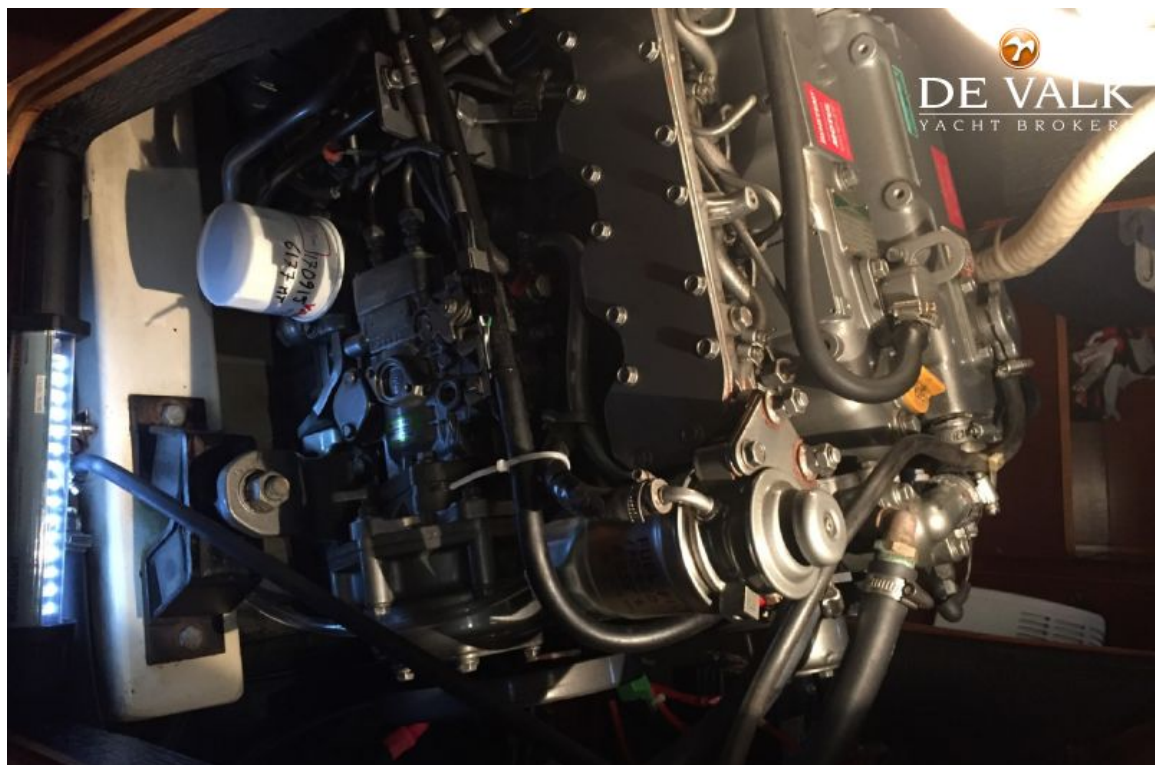
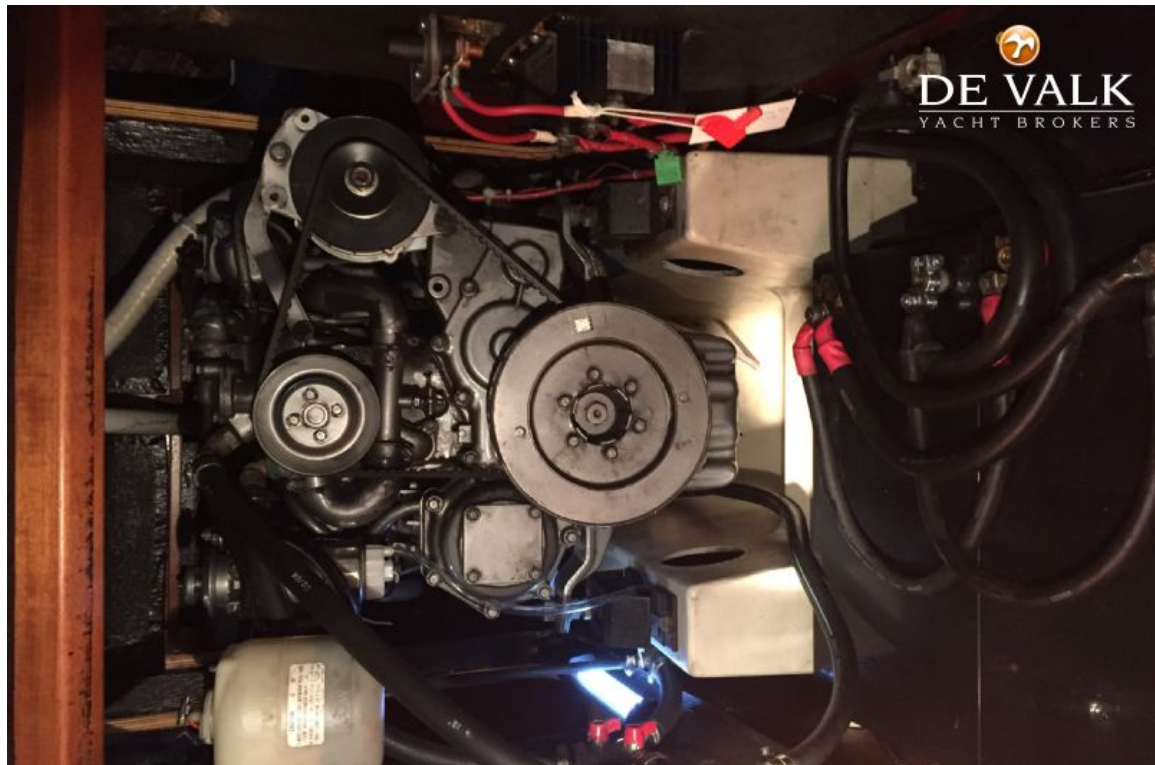
BENETEAU OCEANIS CLIPPER 473



BENETEAU OCEANIS CLIPPER 473



BENETEAU OCEANIS CLIPPER 473



BENETEAU OCEANIS CLIPPER 473

