



DE VALK
YACHT BROKERS



JADE BANKS 50



DE VALK
YACHT BROKERS

BROKER'S COMMENTS

Superb Dutch high quality built Jade Banks Trawler yacht. She comes with a beautiful handcrafted luxury and spacious interior. Since launch this economical yacht has been slightly used, but no expenses were saved on maintenance since new. Manoeuvring and sea handling is excellent. She is well documented. The engine room is a story on its own: an engineers dream, very neat and clean, that almost looks like new. Overall state is very well, so if you are looking for a fantastic 50 ft GRP Trawler.....

Willem Koopmans

SPECIFICATIONS

Dimensions	15.60 x 4.78 x 1.52 (m)	Builder	Jade Banks B.V.
Built	1997	Cabins	2
Material	GRP	Berths	6
Engine(s)	2 x Caterpillar 3208 NA Diesel	Hp/Kw	2 x 210.00 (hp), 154.35 (kw)
Asking price	sold (VAT)	Lying	contact sales office

CONTACT

Sales office	De Valk Costa Blanca	Telephone	+34 96 50 21 569
Address	Costa Blanca Region 03730 Javea Alicante ES	E-mail	costablanca@devalk.nl

DISCLAIMER

These particulars are given in good faith as supplied but cannot be guaranteed.



GENERAL

Model	JADE BANKS 50
Type	motor yacht
LOA (m)	15,60
Beam (m)	4,78
Draft (m)	1,52
Air draft (m)	5,80
Air draft min (m)	4,04
Headroom (m)	2,05
Year built	1997
Builder	Jade Banks B.V.
Country	The Netherlands
Displacement (t)	25
Hull material	GRP
Hull colour	off-white
Deck finish	teak
Superstructure deck finish	teak
Antifouling (year)	2017
Window material	tempered glass
Flybridge	yes
Flybridge cover	yes
Flybridge cockpit cover	yes
Flybridge suncover	yes
Mast can be lowered	yes
Steadying sail with mast	yes
Fuel tank (litre)	stainless steel 2050
Fuel tank 2 (litre)	stainless steel 2050
Level indicator (fuel tank)	yes
Freshwater tank (litre)	stainless steel 1140
Level indicator (freshwater)	yes
Greywater tank (litre)	280



Inside helm position	yes
Flybridge helm position	yes
More info on hull	Heavy duty deep V
Extra info	Very strong and quality built yacht

ACCOMMODATION

Cabins	2
Berths	6
Interior	teak
Layout	Owners cabin aft / guest cabin front
Floor	parquet
Headroom saloon (m)	2,10
Air-conditioning	reverse cycle airco 2 x
Aft Cabin	yes
Dinette to convert into berth	yes
Countertop	Duropol
Sink	stainless steel Double
Cooker	electric 4 burner
Microwave/oven combi	yes
Fridge	yes
Freezer	yes
Hot water system	220V + engine
Water pressure system	electrical
Owners cabin	French bed
Bed length (m)	2,10
Wardrobe	hanging/drawers/shelves
Bathroom	en suite
Toilet	en suite
Toilet system	electric
Wash basin	in the bathroom
Shower	en suite



Guest cabin 1	French bed
Bed length (m)	2,10
Wardrobe	hanging/drawers/shelves
Bathroom	en suite
Toilet	en suite
Toilet system	electric
Wash basin	in the bathroom
Shower	en suite
Washing machine	Candy Aquamatic
Extra info	Fantastic handcrafted interior in great condition

MACHINERY

No of engines	2
Make	Caterpillar
Type	3208 NA
HP	210,00
kW	154,35
Fuel	diesel
Maximum speed (kn)	12
Cruising speed (kn)	9
Consumption (l/hr)	12
Engine hours	850
Drive	shaft
Bowthruster	electric
Electric bilge pump	3 x
Generator	Onan 6.5 Kw
Batteries	yes
Start battery	2 sets 24Volt x 110 Ah
Service battery	yes
Generator battery	1 x 12Volt 110 Ah
Bowthruster battery	2 x 24Volt 110 Ah total 220 Ah



Battery charger	yes
Inverter	yes
Shorepower	yes
Extra info	Engine room and equipment is like new, wow!!!
Extra info	yes

NAVIGATION

Compass	yes
Compass on flybridge	yes
Electric compass	Autohelm St 50
Depth sounder	Autohelm St 50
Log	Autohelm St 50
Repeater	Autohelm St 50 GPS
VHF	Shipmate RS 8300 SOS
Autopilot	Autohelm St 7000
Radar	Furuno 1931
Plotter	Autohelm Nav center

EQUIPMENT

Fixed windscreen	Stainless steel frame on Flybridge
Bimini	New 2016
Window cover	Sun covers
Cockpit cushions	yes
Bathing platform	yes
Boarding ladder	yes
Transom door	yes
Gangway	yes
Deck shower	yes
Anchor	Bruce
Anchor chain	60 mm stainless steel
Windlass	yes



JADE BANKS 50

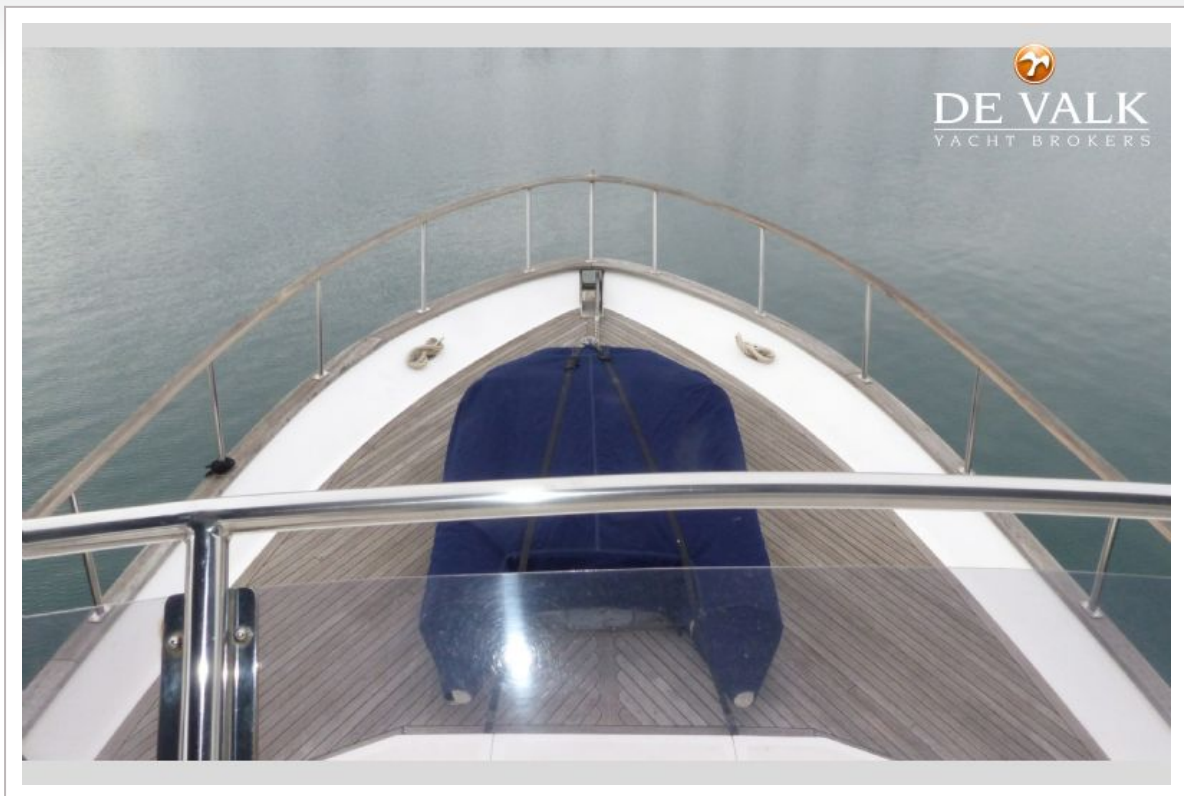
Dinghy	yes
Outboard	yes
Deck crane	Via mast
Sea railing	teak Blanc
Wiper	3
Horn	yes
Fenders	yes
Mooring lines	yes
TV	yes
Radio-cd player	yes
Cockpit speakers	On Flybridge
Extra info	This yacht is well documented!
Extra info	yes



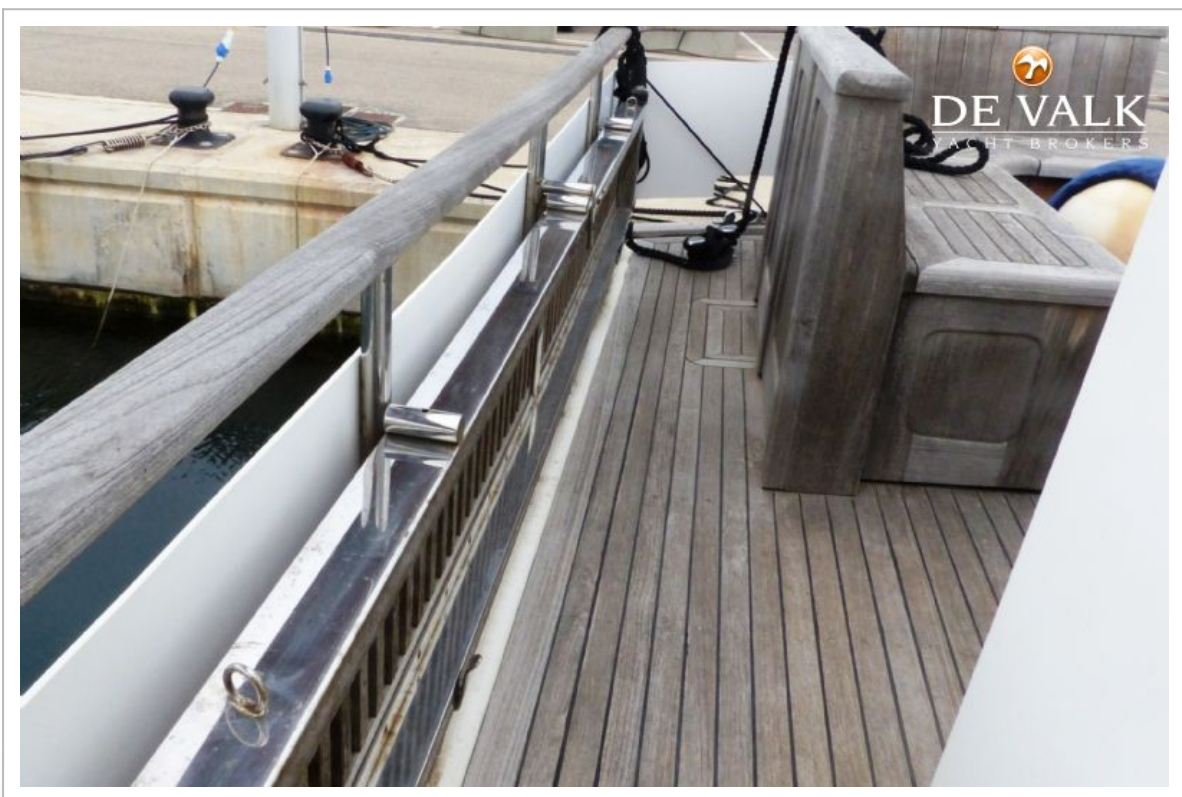
JADE BANKS 50



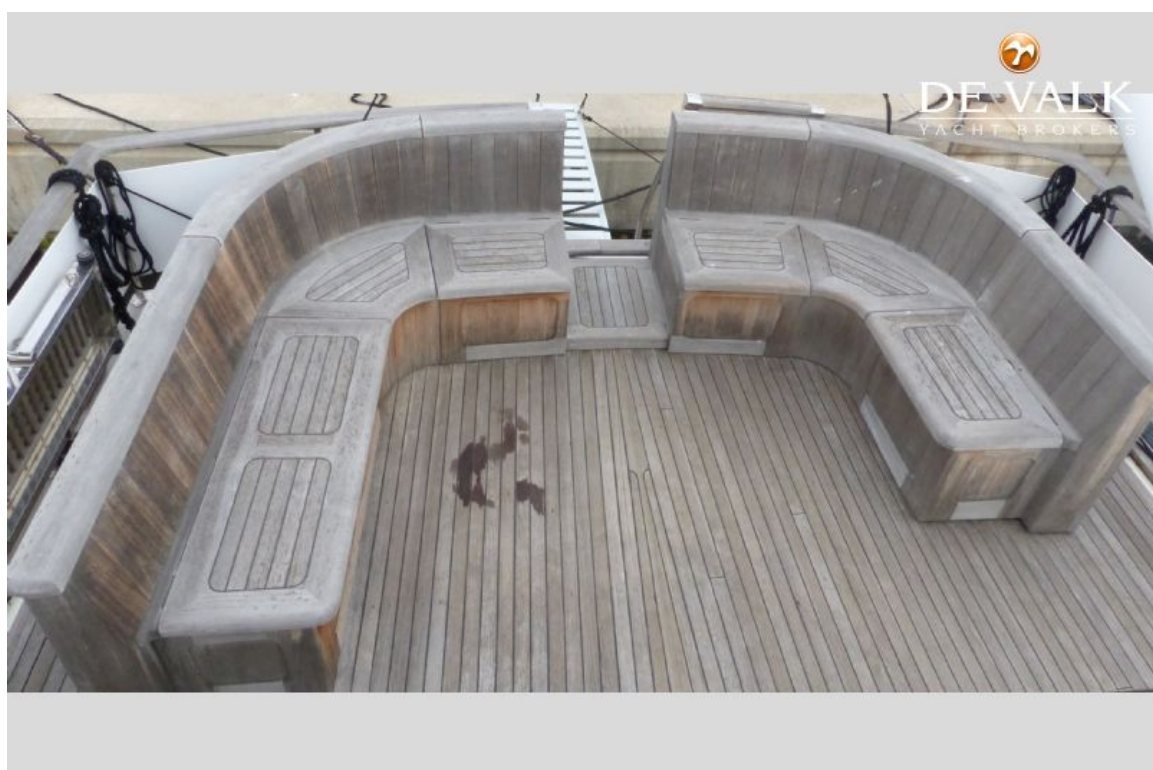








JADE BANKS 50



JADE BANKS 50



JADE BANKS 50

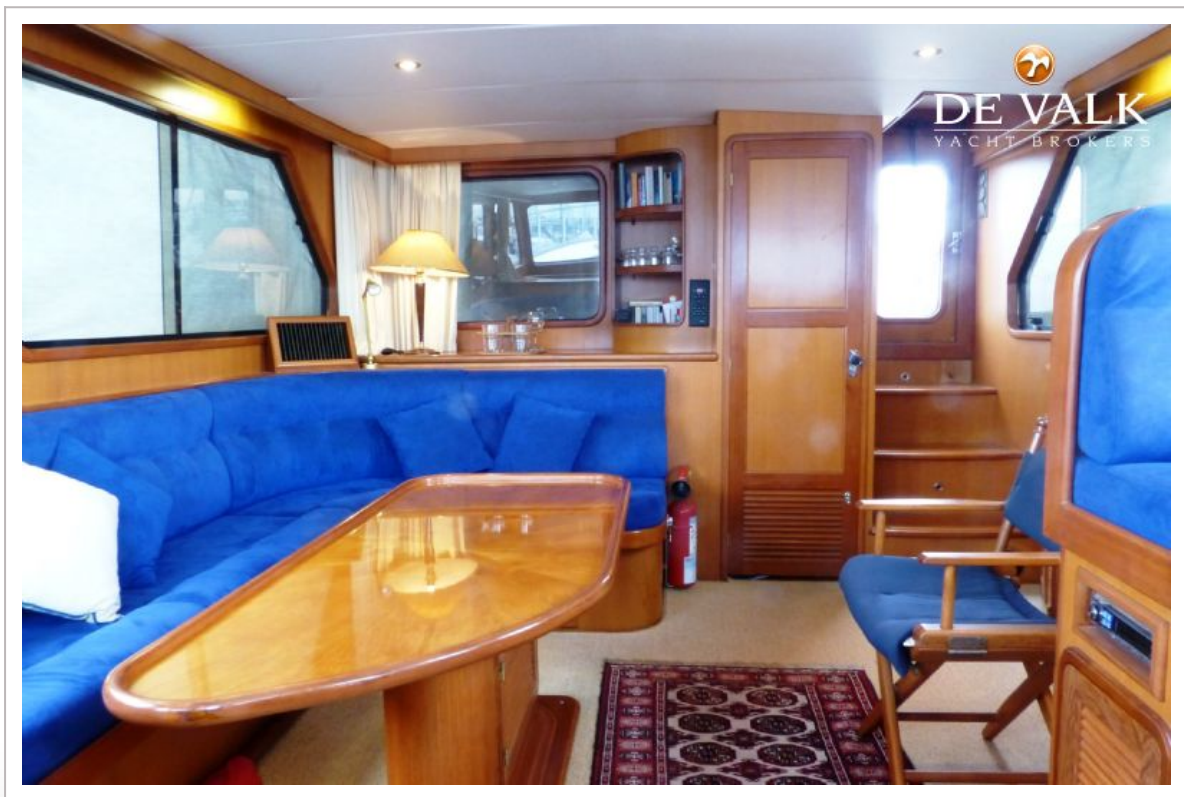
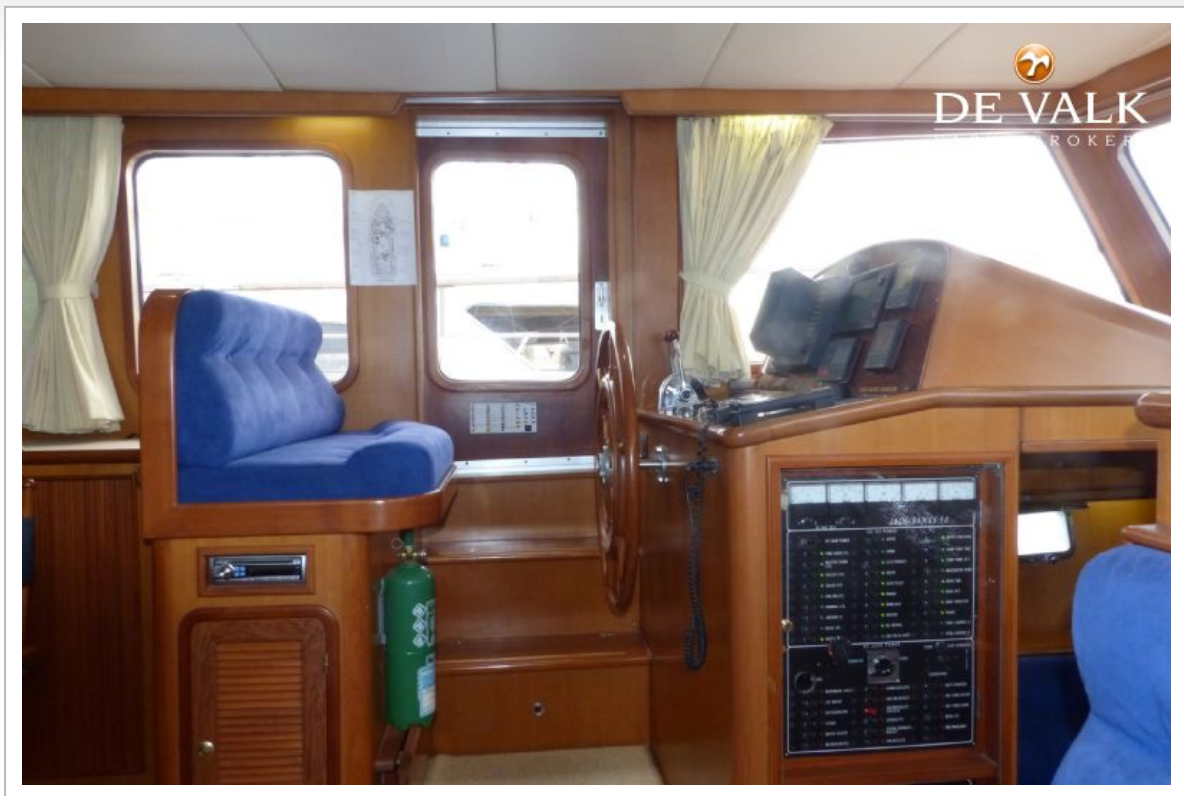


JADE BANKS 50

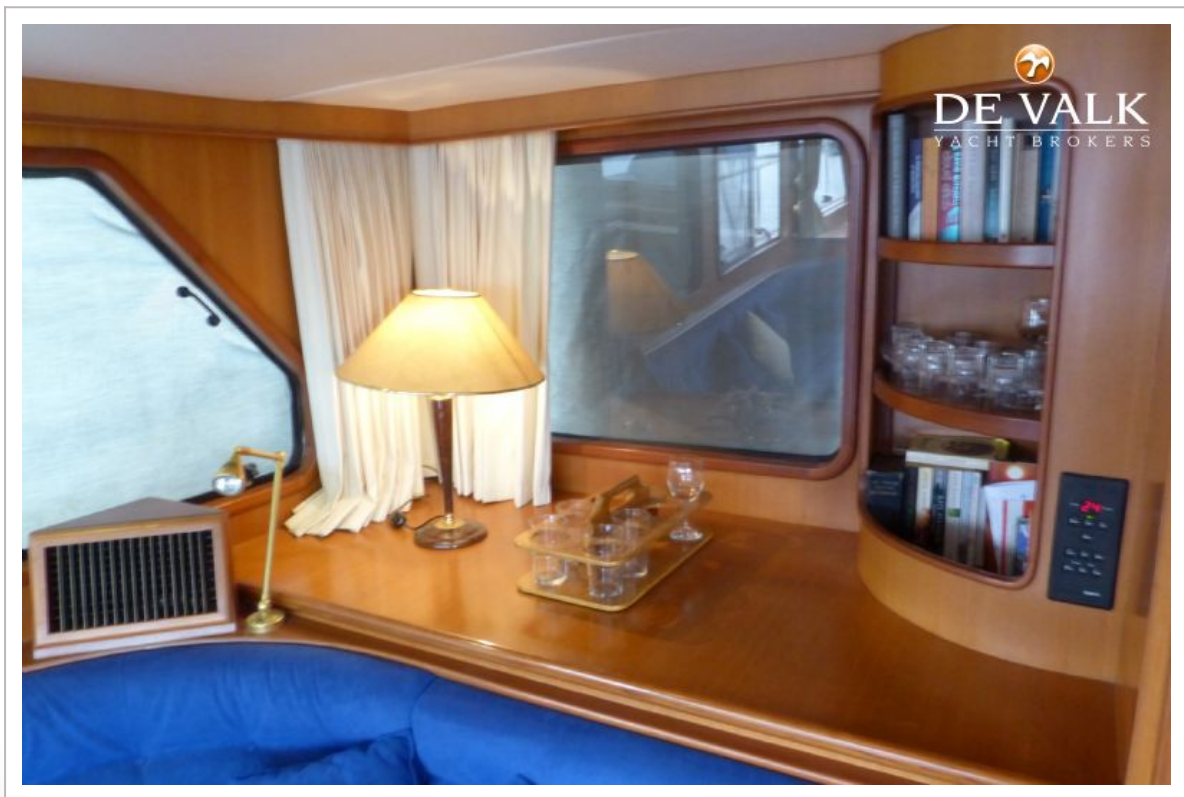


JADE BANKS 50



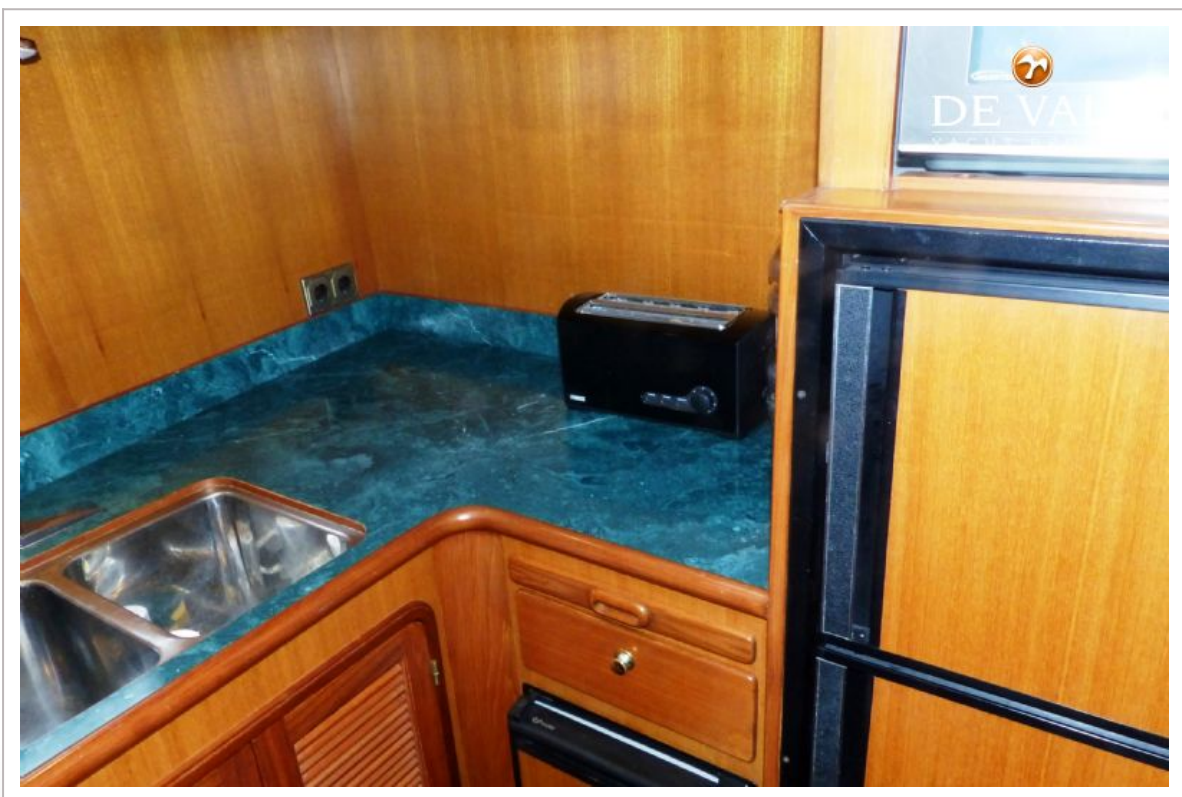


JADE BANKS 50



JADE BANKS 50

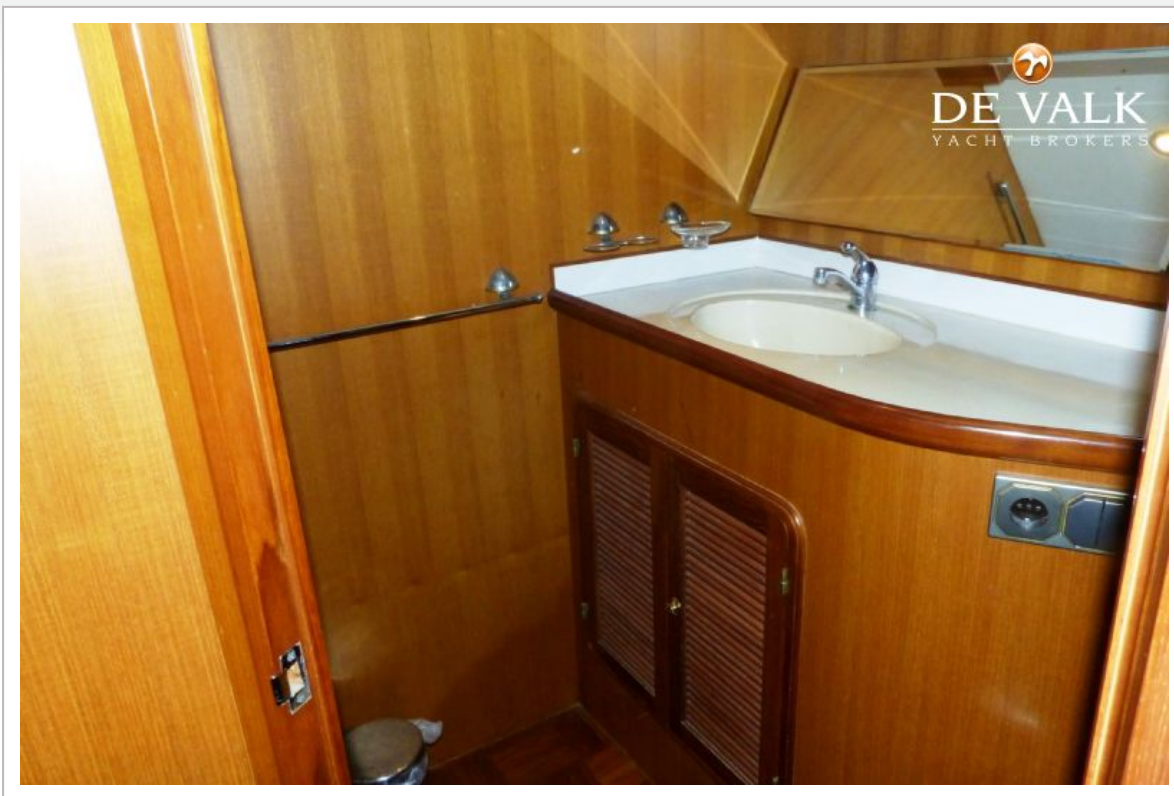




JADE BANKS 50



JADE BANKS 50



JADE BANKS 50

