



DE VALK
YACHT BROKERS



STEFINI 66



DE VALK
YACHT BROKERS

BROKER'S COMMENTS

Plans for a VIP Hotel ship, luxury charter, expedition or just private sailing with crew? This very solidly built yacht is a fantastic classic Italian Lady, offering privacy for 6 guests in the 3 comfortable aft cabins. For the crew a spacious accommodation (front). Outside an enormous cockpit, ideal for a party, dinner or f.i. diving trips. Stunning overall state, you can feel she has been treated with love and attention to detail. Complete refit 2013, many renewals 2018 (sails, water maker, etc.). MCA coded (ending) and in excellent ready to go anywhere condition.

Jörg Hellmich

SPECIFICATIONS

Dimensions	19.03 x 5.30 x 2.20 (m)	Builder	RPD Yachts
Built	1985	Cabins	4
Material	GRP	Berths	11
Engine(s)	2 x Nanni/Mercedes Benz diesel	Hp/Kw	2 x 125.00 (hp), 91.88 (kw)
Asking price	sold (VAT)	Lying	contact sales office

CONTACT

Sales office	De Valk Almeria	Telephone	+34 950 497 825
Address	Puerto Deportivo, Darsena de la Batea 42 04711 Almerimar ES	E-mail	almeria@devalk.nl

DISCLAIMER

These particulars are given in good faith as supplied but cannot be guaranteed.



GENERAL

Model	STEFINI 66
Type	sailing yacht
LOA (m)	19,03
Beam (m)	5,30
Draft (m)	2,20
Headroom (m)	2,10
Year built	1985
Builder	RPD Yachts
Country	Italy
Designer	Mauro Stefini
Displacement (t)	42
CE norm	NA
Hull material	GRP
Hull colour	purple
Hull shape	round-bilged Fully hand laminated
Keel type	fin keel Fully skeg supported rudder
Bilge keels	yes
Superstructure material	GRP
Deck material	GRP
Deck finish	teak In very good condition
Superstructure deck finish	non-skid moulded in
Cockpit deck finish	teak In very good condition
Antifouling (year)	Copper coat 2018
Window frame	stainless steel
Deckhatch	yes
Fuel tank (litre)	Total 1136 ltr
Level indicator (fuel tank)	yes
Freshwater tank (litre)	2 x 1200 ltr 2 x hydrophore
Level indicator (freshwater)	+ carbon filter & UV treatment system
Blackwater tank (litre)	yes



Greywater tank (litre)	2x
Wheel steering	hydraulic Whitlock steering with 5 ft wheel
Inside helm position	yes
Outside helm position	yes
Emergency tiller	New constructed
More info on paintwork	Mountbatten Purple color on hull 2013
Extra info	Refit 2013 to new state
Extra info	MCA coded cat 2
Extra info	Last survey MCA September 2017, needs renewal.

ACCOMMODATION

Cabins	4
Berths	11
Crew cabin	yes
Crew berths	2
Interior	teak
Floor	teak and holly
Aft deck	Huge!
Deck saloon	yes
Saloon	yes
Headroom saloon (m)	2,1
Air-conditioning	reverse cycle airco Cruisair
Navigation center	yes
Aft Cabin	yes
Dinette	Crew dinette 4 pers.
Dinette to convert into berth	2 pers.
Galley	yes
Countertop	yes
Sink	yes
Cooker	calor gas SMEG, 5-burner
Oven	Foster, electric



Microwave	yes
Fridge	3x
Freezer	With icemaker
Hot water system	220V + engine
Water pressure system	electrical
Manual and/or foot pump	yes
Owners cabin	French bed Queen sized
Wardrobe	hanging and drawers
Bathroom	en suite
Toilet	en suite
Toilet system	electric
Wash basin	in the bathroom
Shower	en suite
Guest cabin 1	twin single
Wardrobe	hanging and drawers
Bathroom	en suite
Toilet	en suite
Toilet system	electric
Wash basin	in the bathroom
Shower	en suite
Guest cabin 2	twin single
Wardrobe	hanging and drawers
Bathroom	en suite
Toilet	en suite
Toilet system	electric
Wash basin	in the bathroom
Shower	en suite
Crew cabin(s)	With king size bed and cupboards / drawers, hanging wardrobe
Bathroom (crew)	Ensuite
Toilet (crew)	yes
Toilet system	manual
Washing machine	Whirlpool (AA 1000)



MACHINERY

No of engines	2
Make	Nanni/Mercedes Benz
HP	125
kW	91,88
Fuel	diesel
Year installed	1985
Year of overhaul	2013
Maximum speed (kn)	10
Cruising speed (kn)	8.5
Engine hours	3100
Engine cooling system	freshwater heat exchanger
Drive	shaft
Shaft seal	And bearings and anodes replaced Sept. 2017
Engine controls	bowden cable
Secondary engine	yes
Engine controls	bowden cable
Propeller type	folding 2 x Max prop variable pitch
Propeller shaft material	stainless steel 2017 seals, bearings, anodes replaced
Shaft lubrication	water
Manual bilge pump	yes
Electric bilge pump	yes
Bilge alarm	yes
Electrical installation	yes
Generator	wet exhaust Northern Lights 16 KVA fully serviced
Running hours generator	7300
Batteries	yes
Start battery	2x AGM gel 125a/h (replaced in 2018)
Service battery	AGM gel
Generator battery	1x AGM gel, 125a/h (replaced 2018)
Battery charger	2015 new Sterling + refurbished spare one



Inverter	2018 new 3 Kw Sterling to all sockets
Shorepower	with cable
Watermaker	Technicomar, 140 l (new 2018)

NAVIGATION

Compass	yes
Electric compass	On pilot
Depth sounder/log	yes
Windset	Raymarine ST60
Fish finder	yes
VHF	2x fixed Ray60 and Cobra + new antenna's and cables
VHF handheld	2x portable Iridium satellite phone
Autopilot	Raymarine SPX10 with ST6002 controller
Radar	Raymarine HD
Radar/plotter	2x Raymarine, 9" + 12"
Navtex	Furuno
AIS receiver	+ new antenna
EPIRB	yes
Navigation lights	New installed, LED anchor light

EQUIPMENT

Sprayhood	yes
Bimini	yes
Cockpit cushions	yes
Cockpit table	yes
Cockpit chairs	yes
Boarding ladder	stainless steel
Gangway	Opacmare 2 section, hydraulic, with remote control
Anchor	Fortress FX125 bow anchor with wash system
Anchor 2	CQR Plough 75 lb
Windlass	electrical Lewmar 3000



Dinghy	Sea Search 390, 6 pers.
Outboard	Mariner 9.9 hp (new 2017, annually serviced)
Life raft	container 2x Plastimo Transoc. Solas B + 1x Waypoint, all hydrost. release
Life raft (pers)	2x 6p + 1x 4p
Last life raft survey	Until April 2021
Lifejackets	12x Baltic + 4x Kru, all automatic, all last service Aug. 2018
Safety harness	15x
Radar reflector	Echomax
Fenders	12x Polyform F5 plus 1x A4 bow fender, all with black cover
TV	In all cabins
Fire extinguisher	In all areas of engine room and accommodation
Extra info	Carbon monoxide / smoke alarms
Extra info	Emergency torches in cabins
Extra info	Plus 1x 4 pers. Waypoint with hydrostatic release

RIGGING

Rigging	cutter
Standing rigging	wire Replaced 2013 with report
Brand mast	Keel stepped
Material mast	aluminium New LED anchor,, tri color, steam, deck, spreader light lights
Spreaders	2
Keel stepped mast	Mast repainted 2013
Fully battened mainsail	Hyde Sails 2018
Stoway mast	Hydraulic operated
Jib	New 2015
Genoa I	Hyde Sails 2018
Staysail	Hyde Sails 2018
Stormjib	New 2015
Backstay adjuster	hydraulic Navtec serviced 2018
Boomvang	hydraulic Navtec serviced 2018



Primary sheet winch

Secondary sheet winch

Genoa sheetwinches

Extra info

Extra info

8 Antal self tailing

Anderson self tailing for main sheet

Antal 2 speed electrical self tailing

Running rigging replaced 2018 Dynema

Electro cables replaced in mast 2013





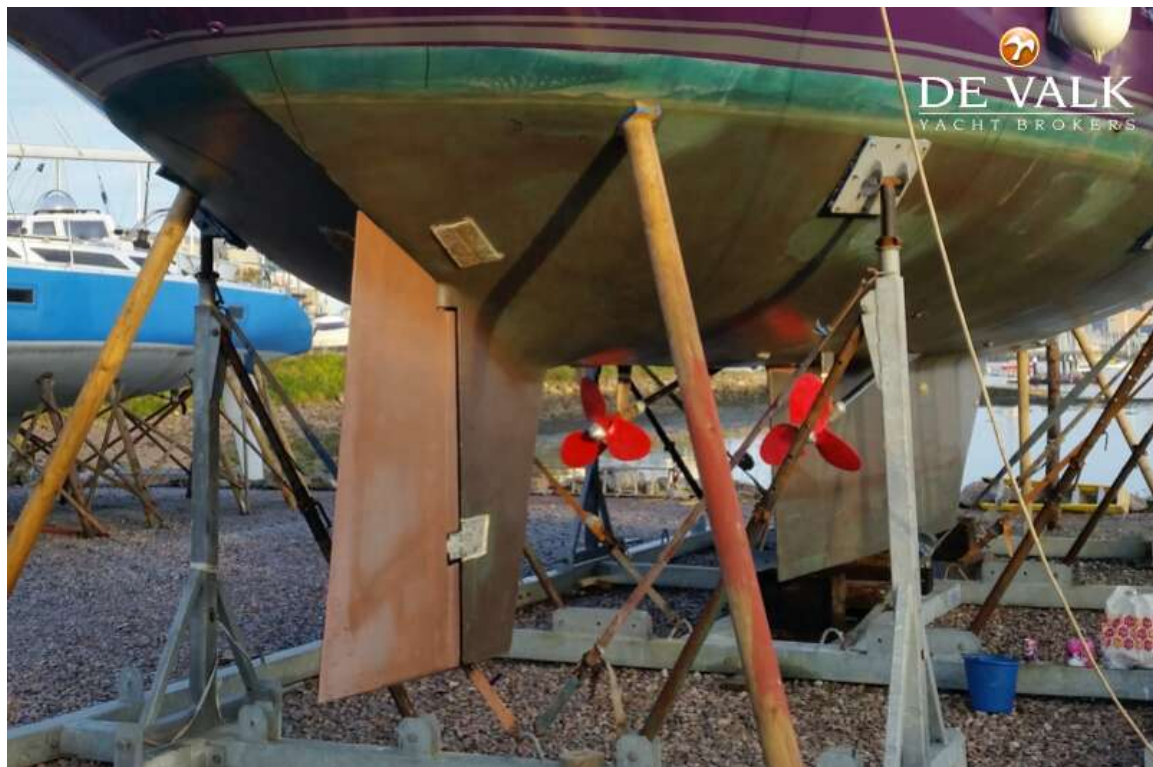


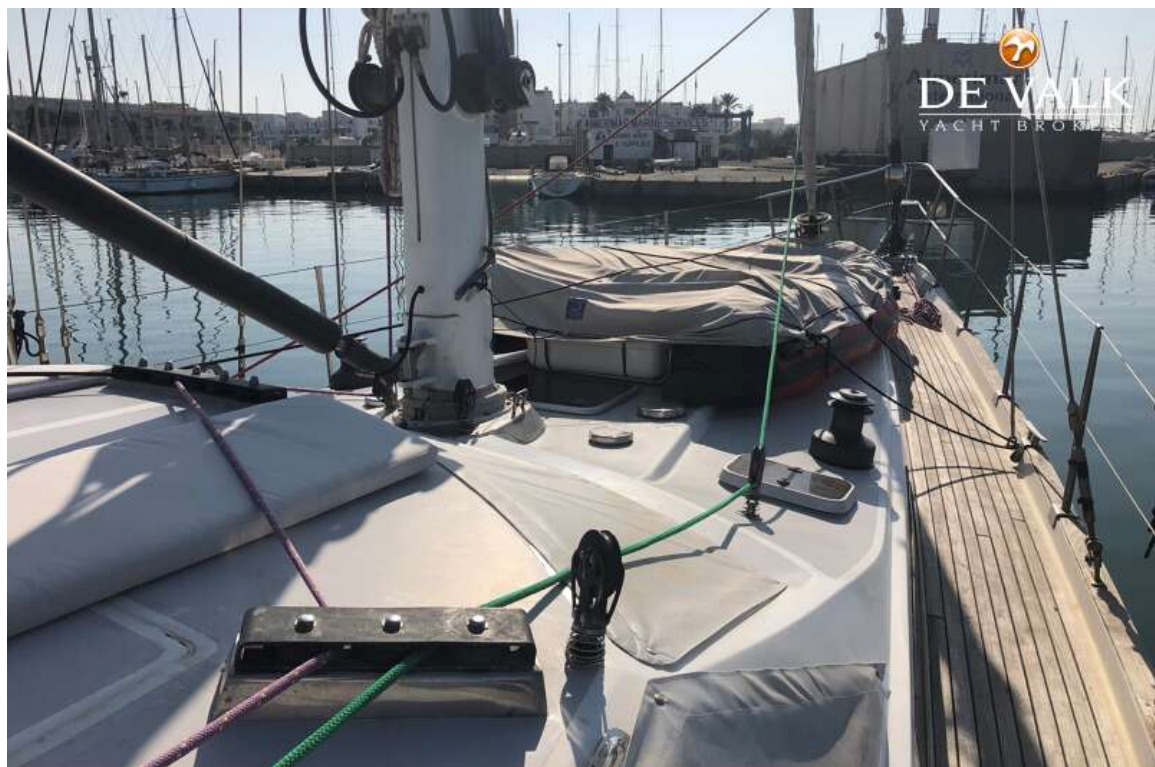
STEFINI 66

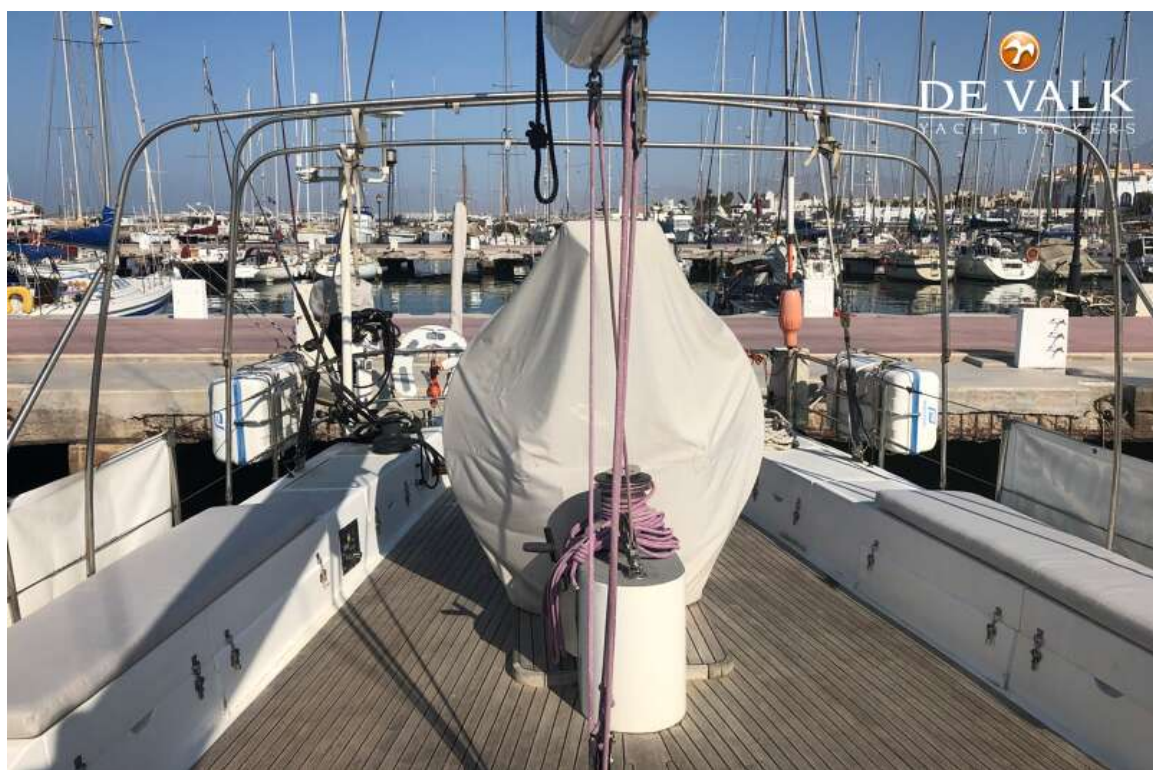


STEFINI 66

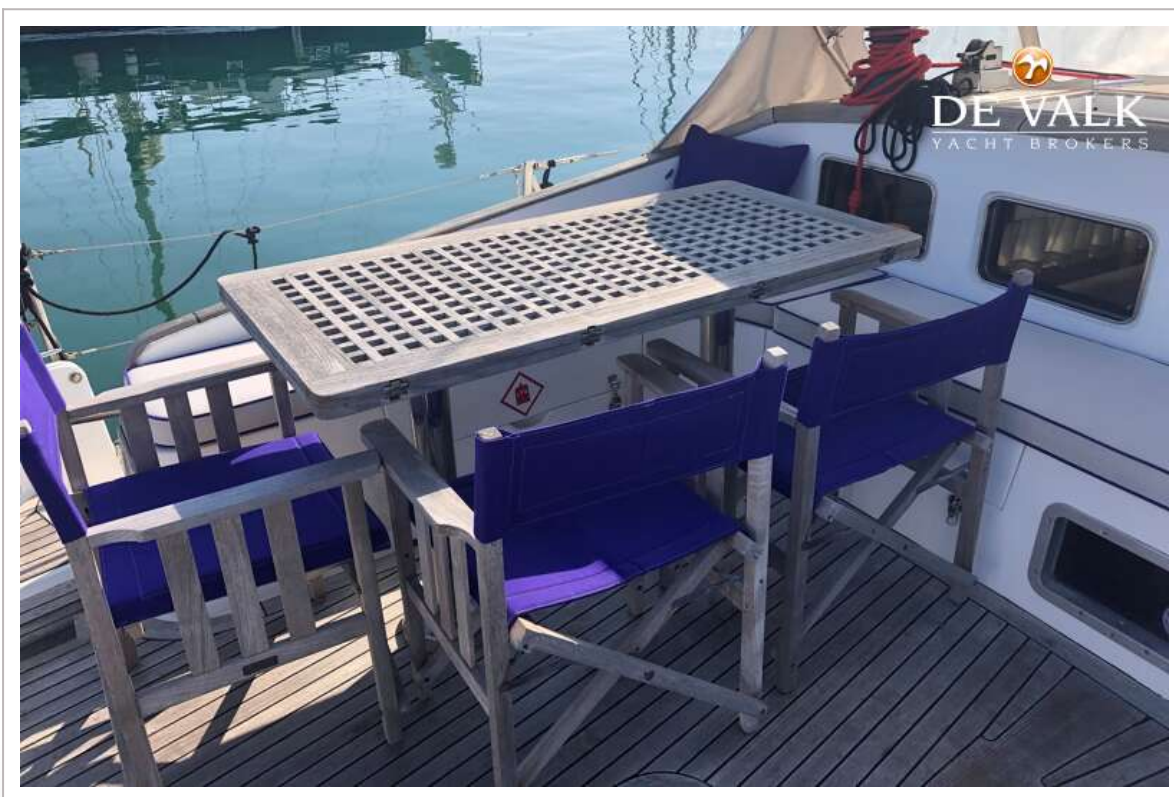




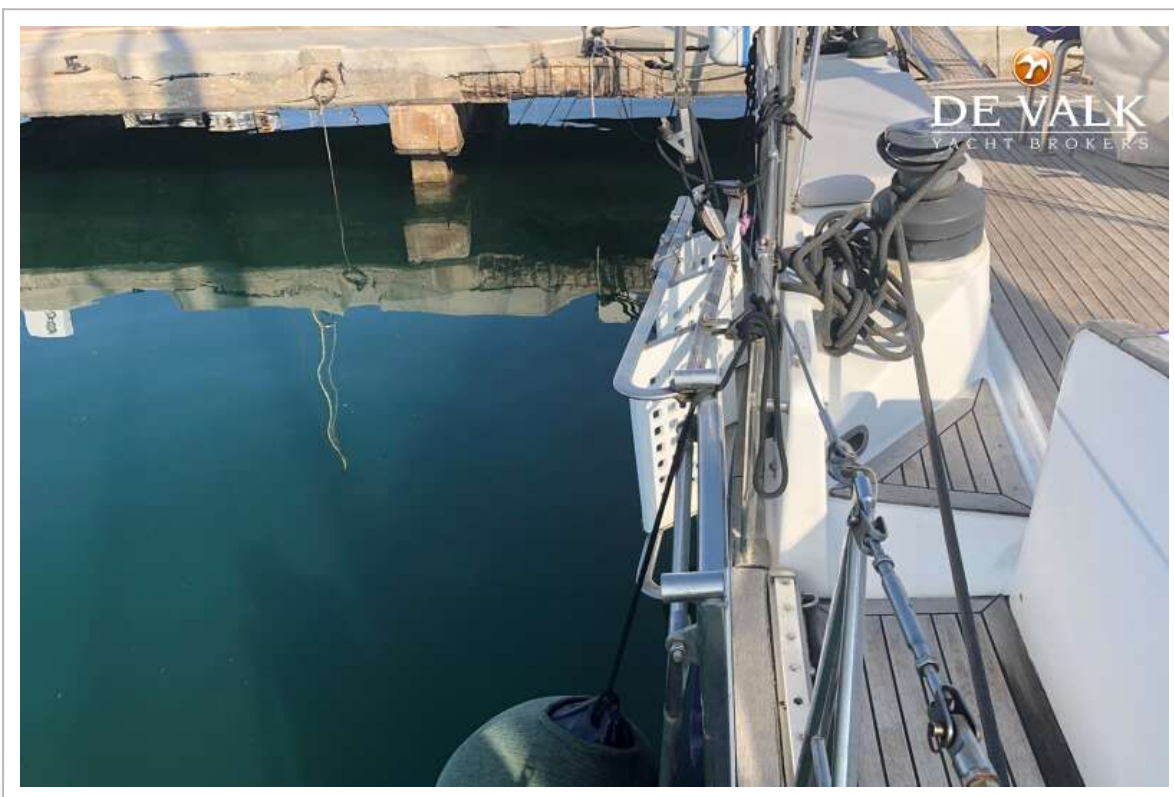




STEFINI 66



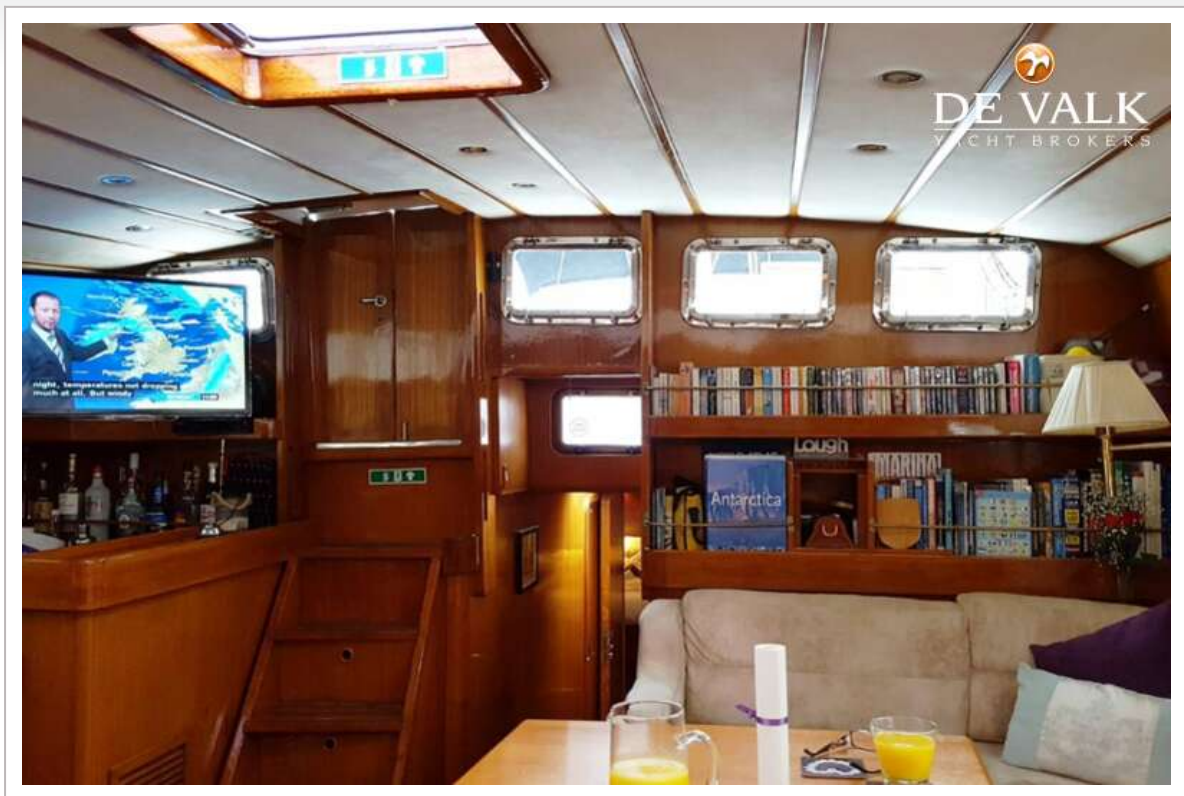
STEFINI 66



STEFINI 66



STEFINI 66



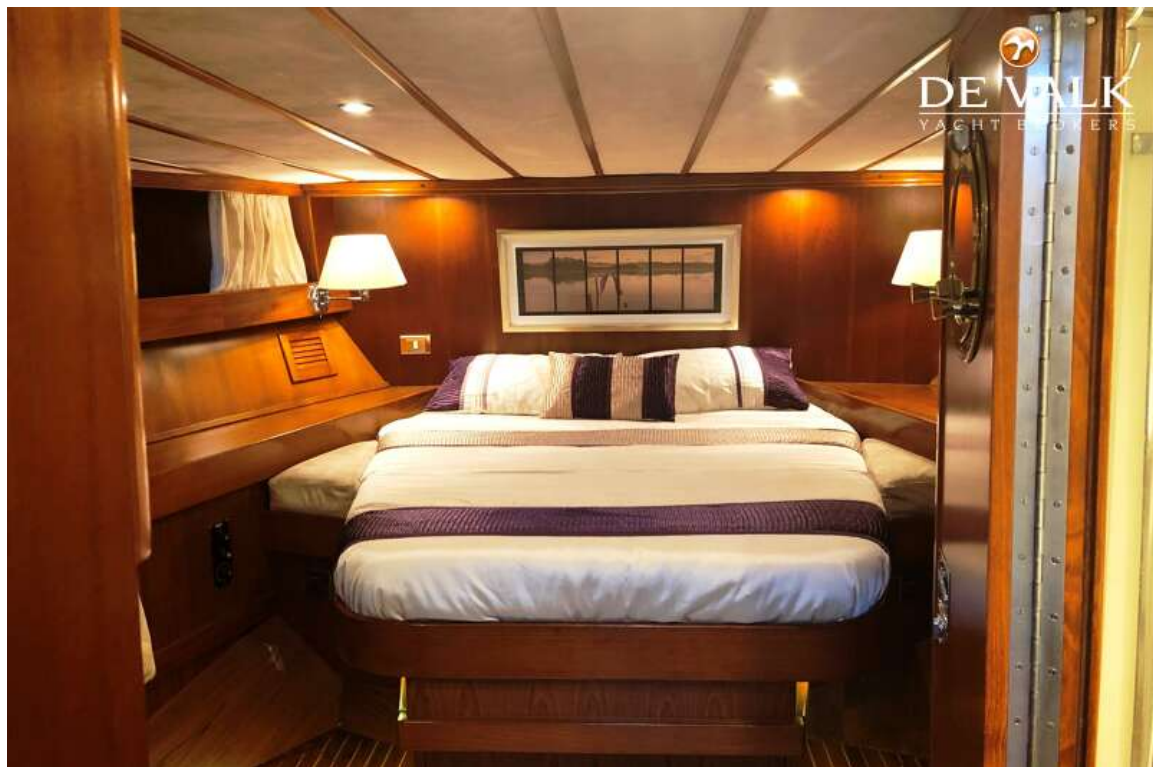
STEFINI 66

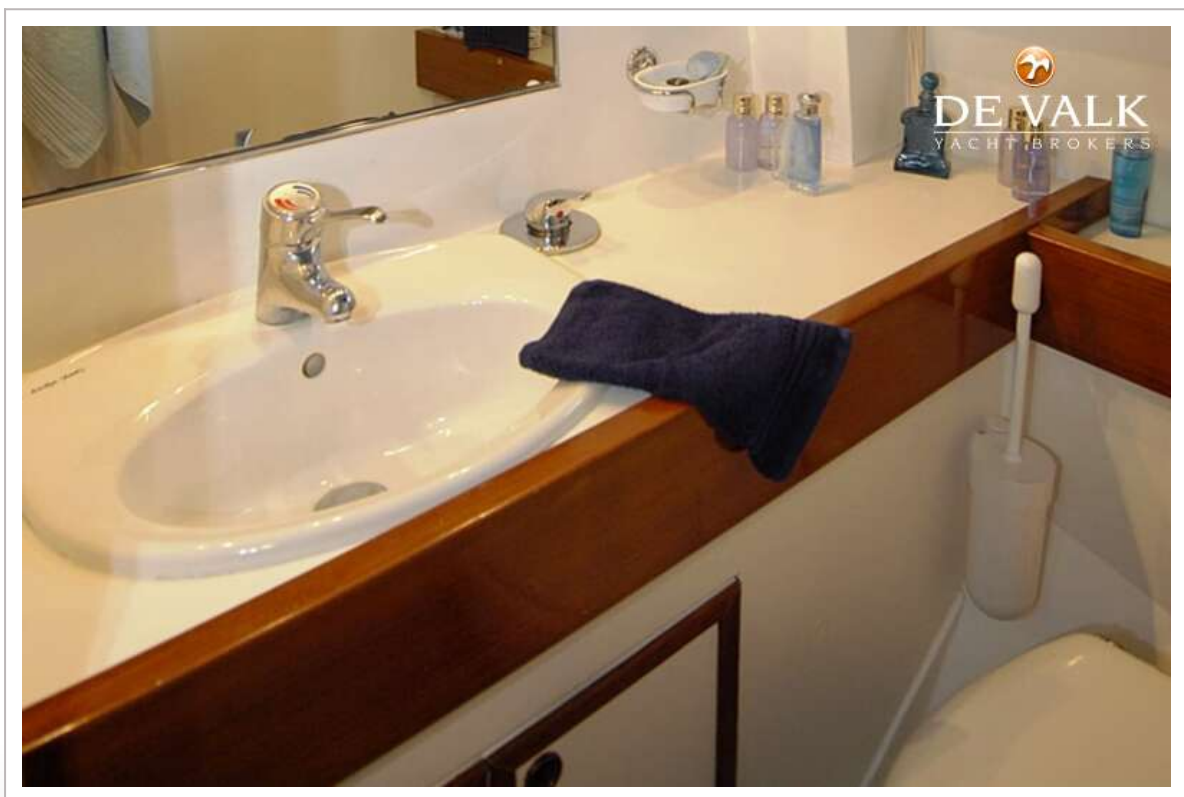


STEFINI 66



STEFINI 66







STEFINI 66

