



DE VALK  
YACHT BROKERS

## BAVARIA 390 CARIBIC



DE VALK  
YACHT BROKERS

# BAVARIA 390 CARIBIC

## BROKER'S COMMENTS

This very neat maintained, ultimate classic Bavaria 390 Caribic is simply a joy to look for. She offers comfortable cruising with easy sail handling and manoeuvring and "old time" solid built as a bonus. The teak deck has fully been redone some years ago and is in very good condition. This three cabin owners version offers master cabin in front with privacy and two very comfortable guest cabins aft. Great yacht with huge potential and excellent value for money. To be seen on appointment in Torrevieja, Spain.

*Willem Koopmans*

## SPECIFICATIONS

<b>Dimensions</b>	12.15 x 4.00 x 1.80 (m)	<b>Builder</b>	Bavaria GmbH
<b>Built</b>	1990	<b>Cabins</b>	3
<b>Material</b>	GRP	<b>Berths</b>	6
<b>Engine(s)</b>	1 x Volvo Penta 2003T diesel	<b>Hp/Kw</b>	44.00 (hp), 32.34 (kw)
<b>Asking price</b>	sold (VAT )	<b>Lying</b>	contact sales office

## CONTACT

<b>Sales office</b>	De Valk Costa Blanca	<b>Telephone</b>	+34 96 50 21 569
<b>Address</b>	Costa Blanca Region 03730 Javea Alicante ES	<b>E-mail</b>	costablanca@devalk.nl

## DISCLAIMER

These particulars are given in good faith as supplied but cannot be guaranteed.



# BAVARIA 390 CARIBIC

## GENERAL

<b>Model</b>	BAVARIA 390 CARIBIC
<b>Type</b>	sailing yacht
<b>LOA (m)</b>	12,15
<b>Beam (m)</b>	4,00
<b>Draft (m)</b>	1,80
<b>Air draft (m)</b>	18,00
<b>Headroom (m)</b>	1,85
<b>Year built</b>	1990
<b>Builder</b>	Bavaria GmbH
<b>Country</b>	Germany
<b>Displacement (t)</b>	8
<b>Ballast (tonnes)</b>	3
<b>CE norm</b>	NA
<b>Hull material</b>	GRP
<b>Hull colour</b>	white
<b>Keel type</b>	fin keel
<b>Superstructure material</b>	GRP
<b>Deck material</b>	GRP
<b>Deck finish</b>	teak Renewed 2008
<b>Superstructure deck finish</b>	teak
<b>Cockpit deck finish</b>	teak Renewed 2012
<b>Antifouling (year)</b>	September 2021
<b>Dorades</b>	yes
<b>Window frame</b>	aluminium
<b>Window material</b>	perspex
<b>Deckhatch</b>	yes
<b>Fuel tank (litre)</b>	GRP 150
<b>Freshwater tank (litre)</b>	2x 210
<b>Level indicator (freshwater)</b>	yes
<b>Wheel steering</b>	cable steering



# BAVARIA 390 CARIBIC

Emergency tiller	yes
Extra info	Neat yacht
Extra info	Built under Germanische Lloyds

## ACCOMMODATION

Cabins	3
Berths	6
Floor	teak and holly
Headroom saloon (m)	1,85
Heating	Webasto
Chart table	yes
Dinette	yes
Galley	yes
Countertop	yes
Sink	Double
Cooker	calor gas 2 burner
Oven	yes
Fridge	yes
Hot water system	220V + Calor Gas Boiler
Water pressure system	electrical
Owners cabin	double bed
Bed length (m)	2
Wardrobe	drawers and shelves
Toilet	en suite Toilet, new Nov. 2021
Toilet system	electric
Wash basin	yes
Shower	yes
Guest cabin 1	yes
Bed length (m)	2
Wardrobe	hanging and shelves
Bathroom	shared



# BAVARIA 390 CARIBIC

Toilet	shared Toilet, new Nov. 2021
Toilet system	electric
Wash basin	yes
Guest cabin 2	yes
Bed length (m)	2
Wardrobe	hanging and shelves
Bathroom	shared
Toilet	shared
Toilet system	electric
Wash basin	yes
Extra info	New ceiling and lights in salon, 2021
Extra info	New upholstery aft cabins, 2021

## MACHINERY

No of engines	1
Make	Volvo Penta
Type	2003T
HP	44
kW	32,34
Fuel	diesel
Year installed	1990
Maximum speed (kn)	8,5
Cruising speed (kn)	6
Consumption (l/hr)	3
Engine hours	1460
Drive	sail-drive
Engine controls	bowden cable
Propeller blades	3
Manual bilge pump	yes
Electric bilge pump	yes
Start battery	New 2021



# BAVARIA 390 CARIBIC

Service battery	2 x 190 Amp Premium
Battery charger	Mastervolt
Shorepower	yes
Extra info	Engine serviced September 2021

## NAVIGATION

Compass	yes
Depth sounder/log	Raymarine ST 60
Windset	Raymarine ST 60
Repeater	Raymarine ST 60 CH
VHF	RS 8300 SOS
Autopilot	Raytheon
Radar	SI 70 Raymarine
GPS	Garmin GPS 128
Plotter	Yeoman
Navtex	NASA
Navigation lights	yes

## EQUIPMENT

Fixed windscreen	yes
Sprayhood	yes
Bimini	yes
Cockpit table	yes
Boarding ladder	yes
Bow ladder	yes
Deck shower	yes
Anchor	CQR
Anchor chain	50 mtr
Windlass	electrical
Life raft	yes
Life raft (pers)	Out of service date



Safety lines on deck	yes
Fenders	yes
Mooring lines	yes
Radio-cd player	yes
Cockpit speakers	yes
Fire extinguisher	Out of service date

## RIGGING

Rigging	sloop
Standing rigging	yes
Brand mast	yes
Material mast	aluminium
Spreaders	yes
Fully battened mainsail	Used, in fair condition
Jib	North Sails, used, in fair condition
Genoa	Used, in fair condition
Genoa furler	yes
Gennaker	With bow sprit
Spinnaker	yes
Spi-pole	yes



# BAVARIA 390 CARIBIC

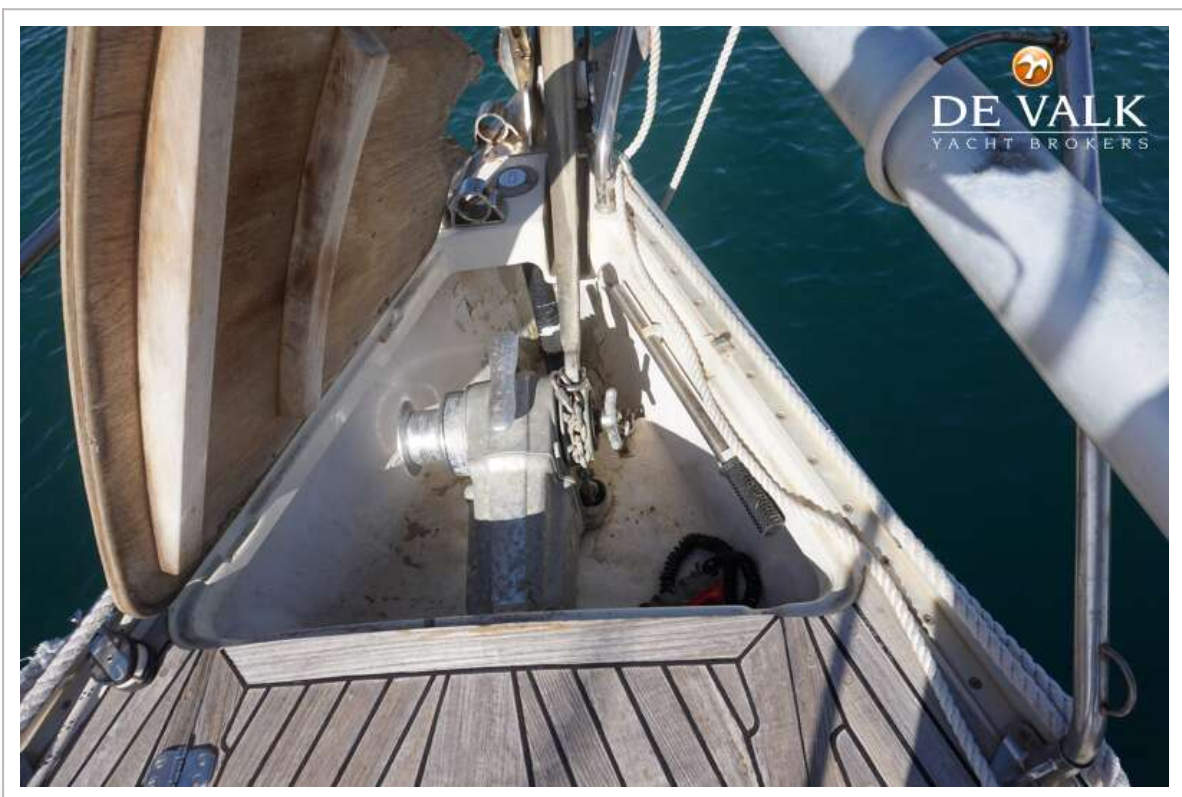
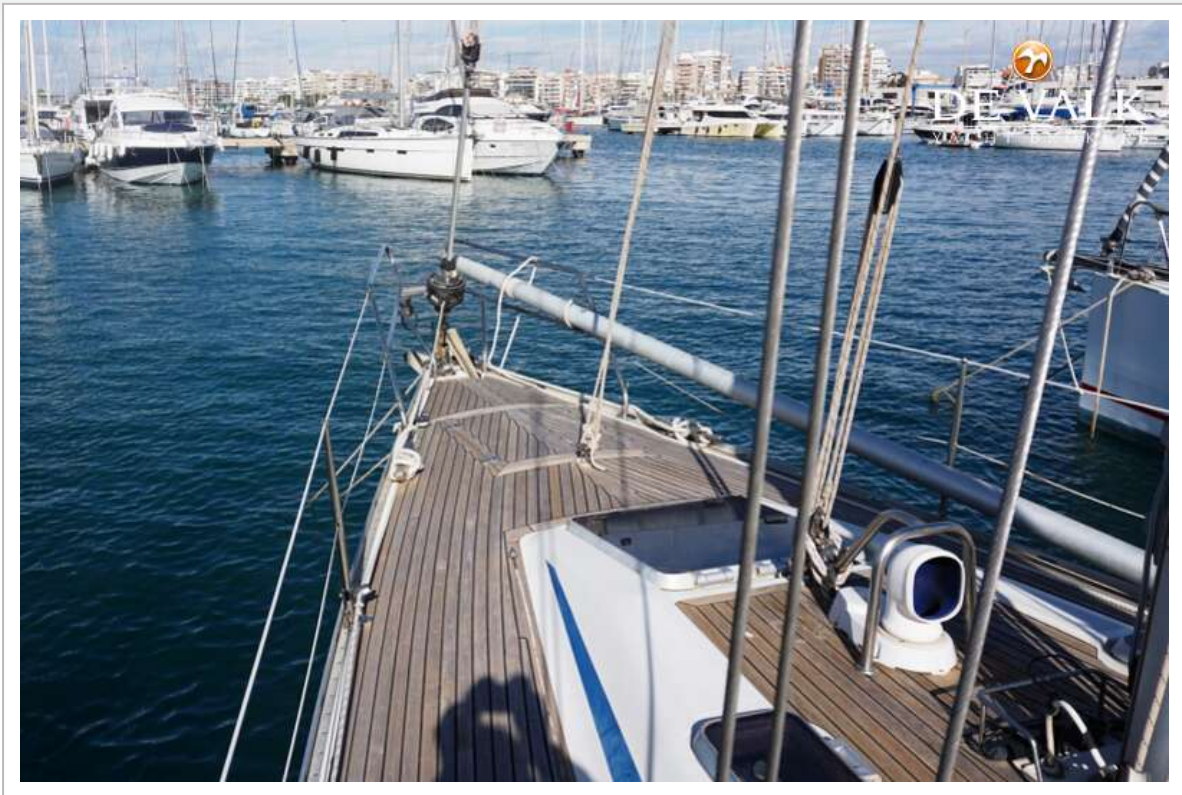




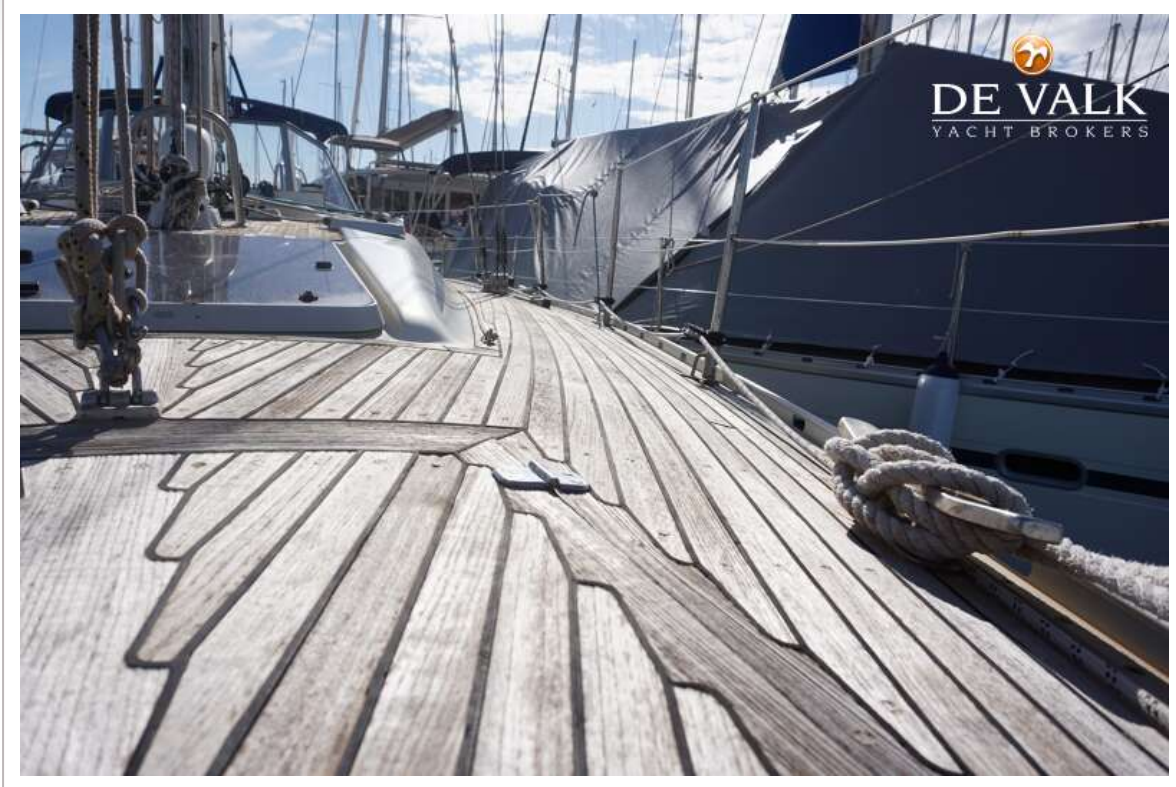
# BAVARIA 390 CARIBIC



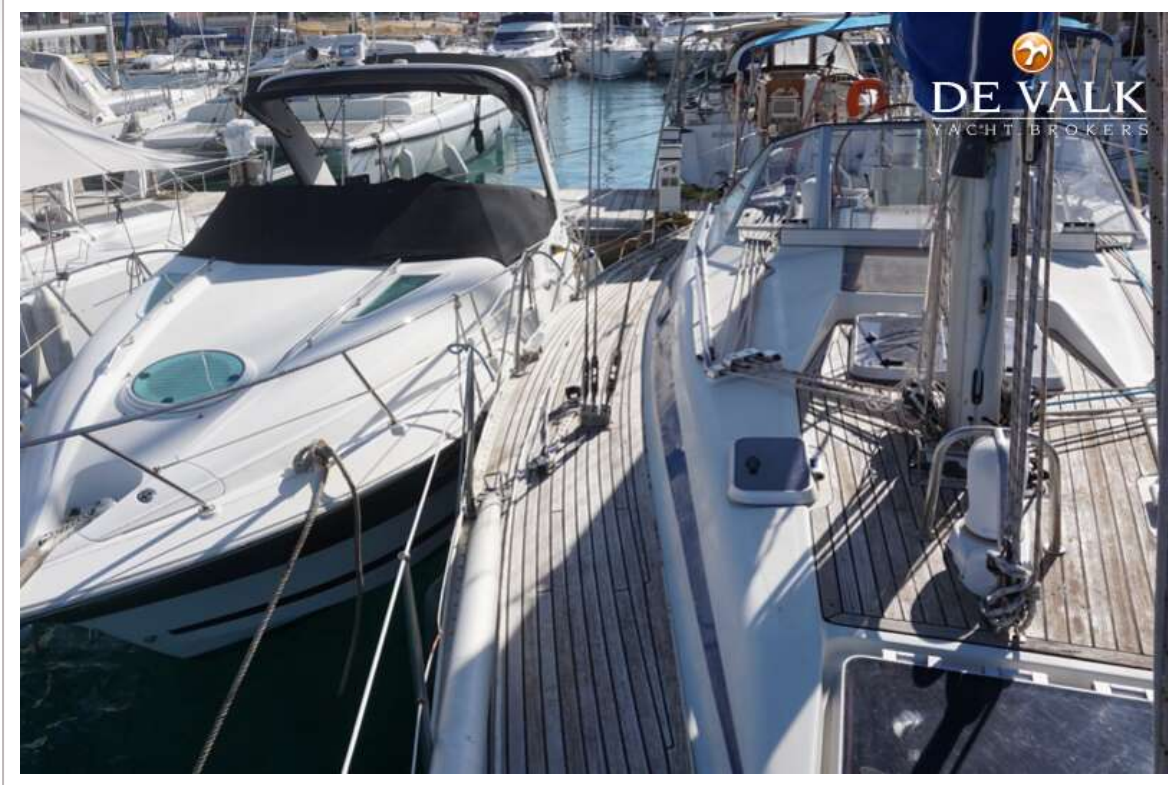
# BAVARIA 390 CARIBIC



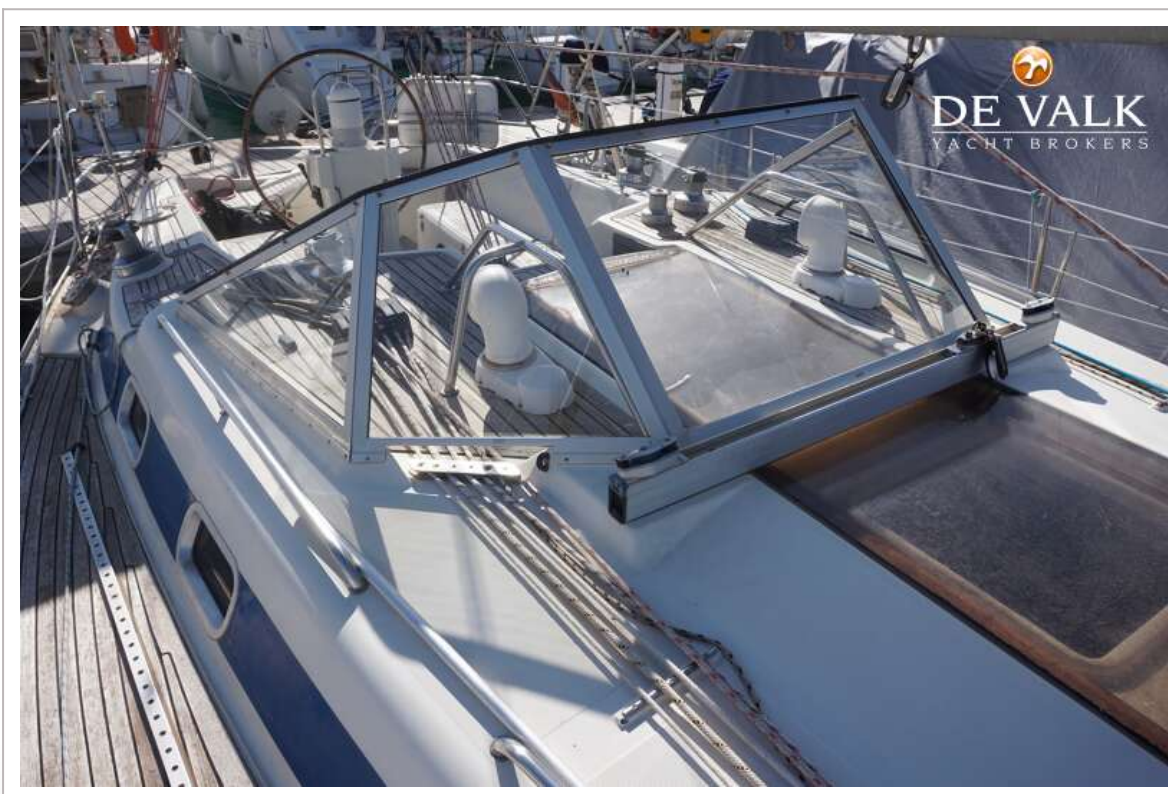
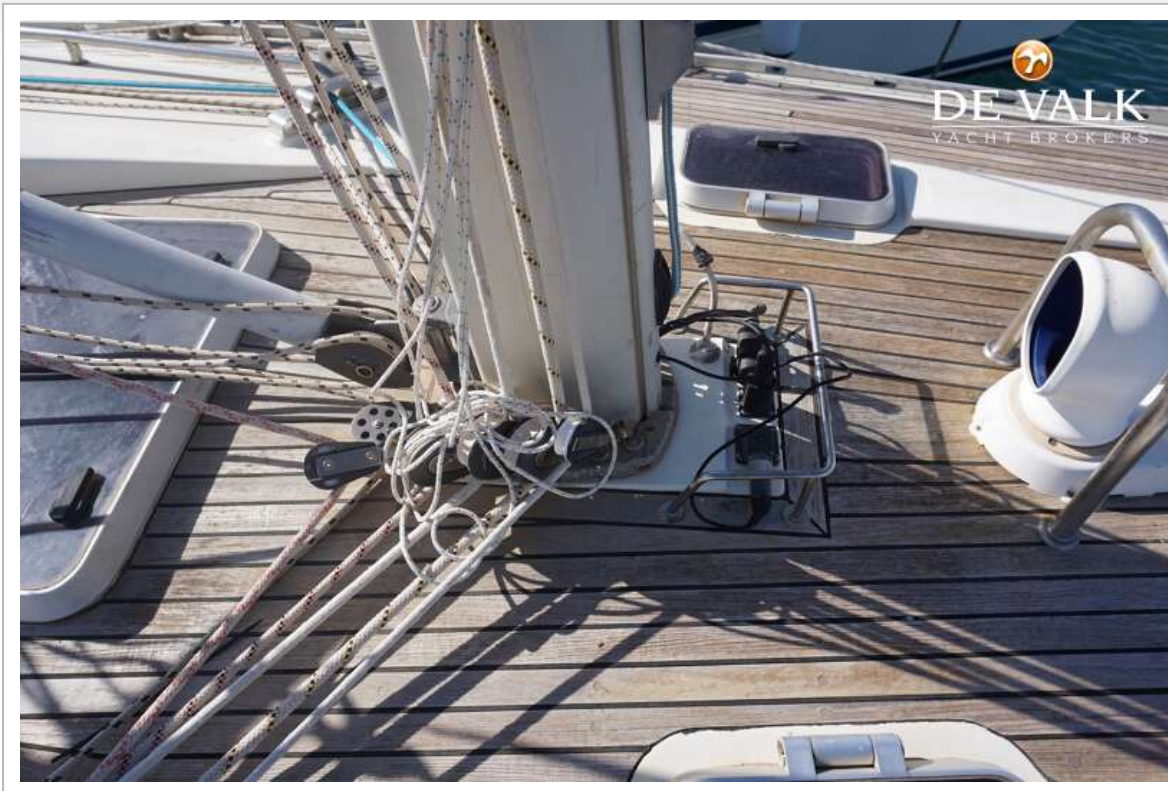
# BAVARIA 390 CARIBIC



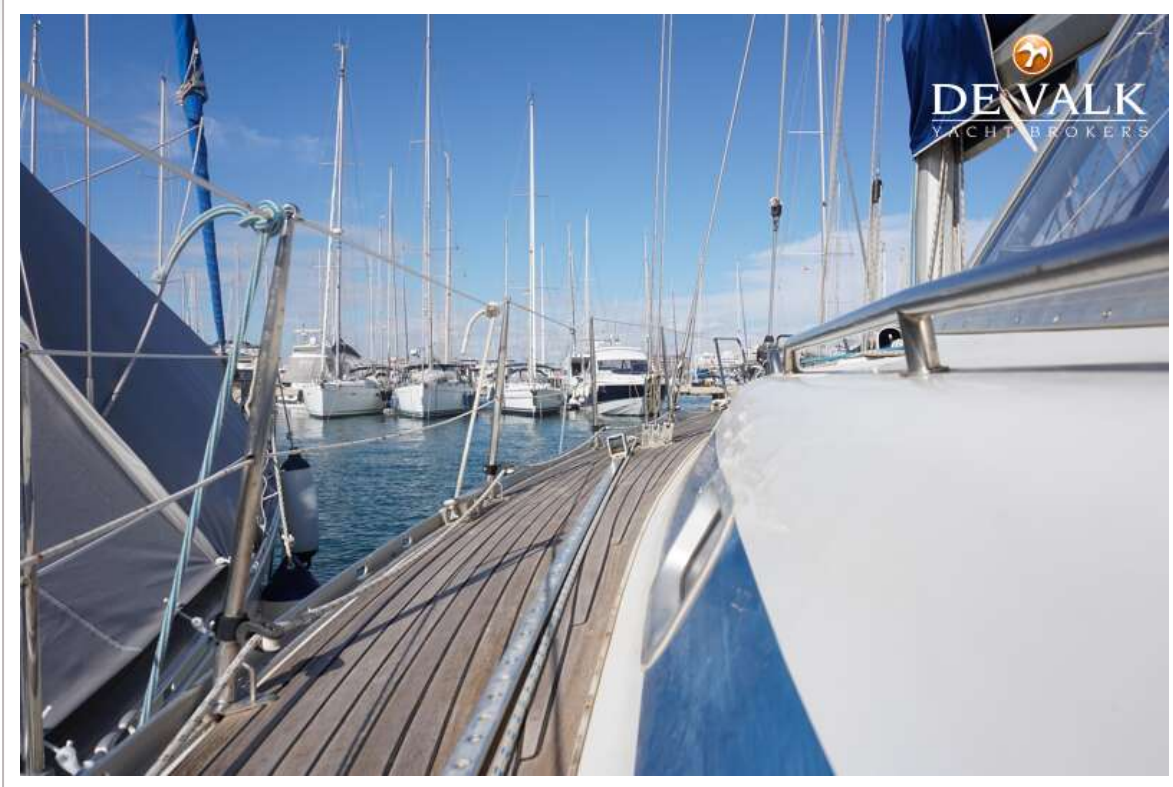
# BAVARIA 390 CARIBIC



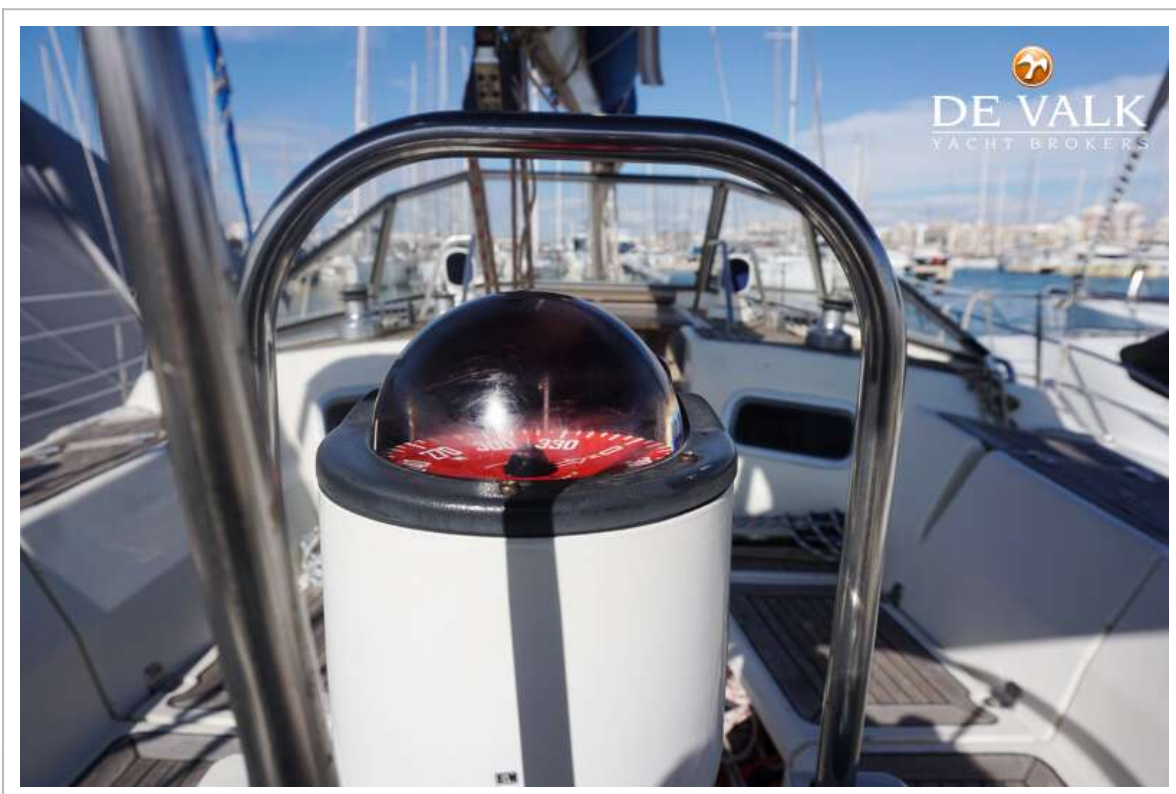
# BAVARIA 390 CARIBIC



# BAVARIA 390 CARIBIC



# BAVARIA 390 CARIBIC



# BAVARIA 390 CARIBIC

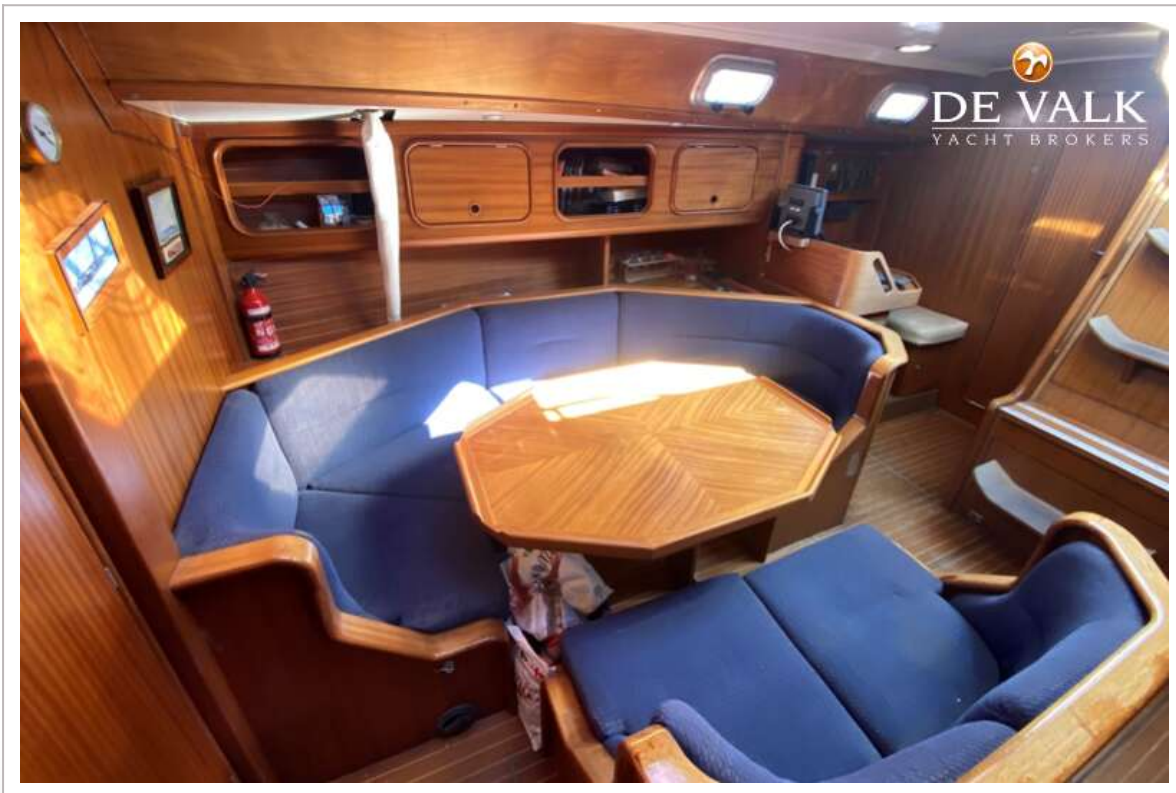




# BAVARIA 390 CARIBIC



# BAVARIA 390 CARIBIC



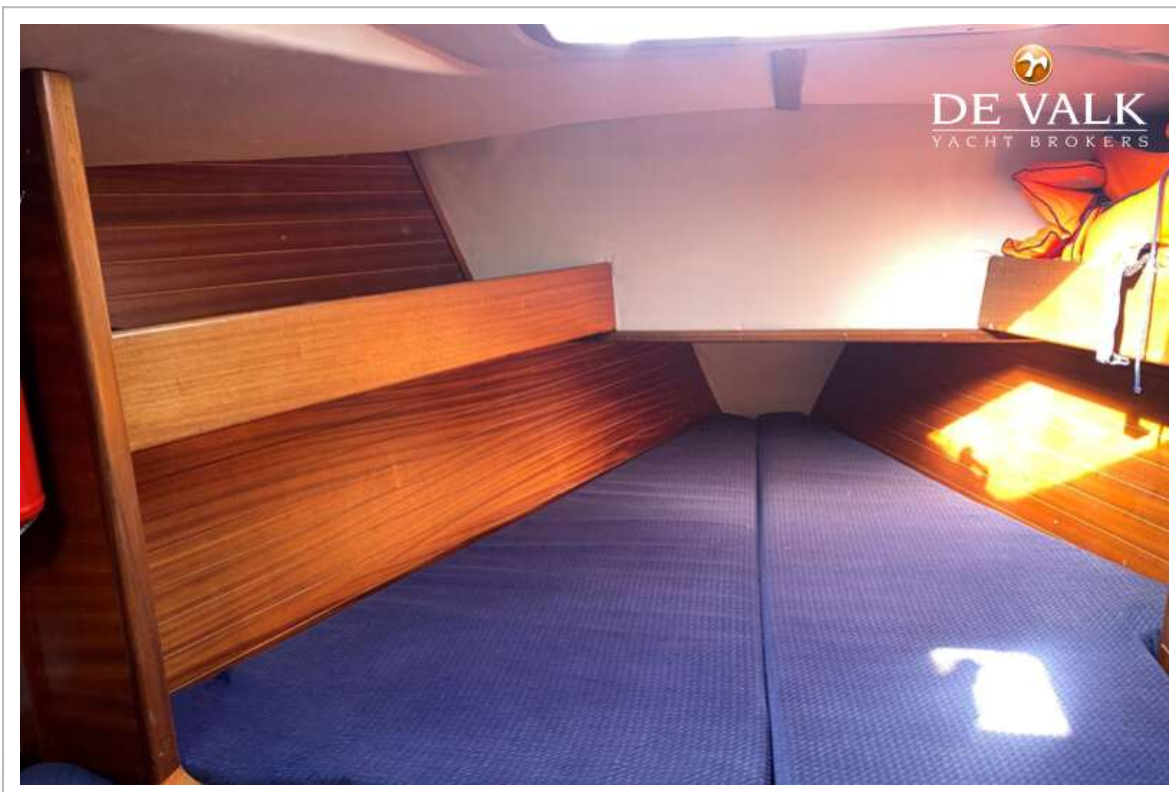
# BAVARIA 390 CARIBIC



# BAVARIA 390 CARIBIC



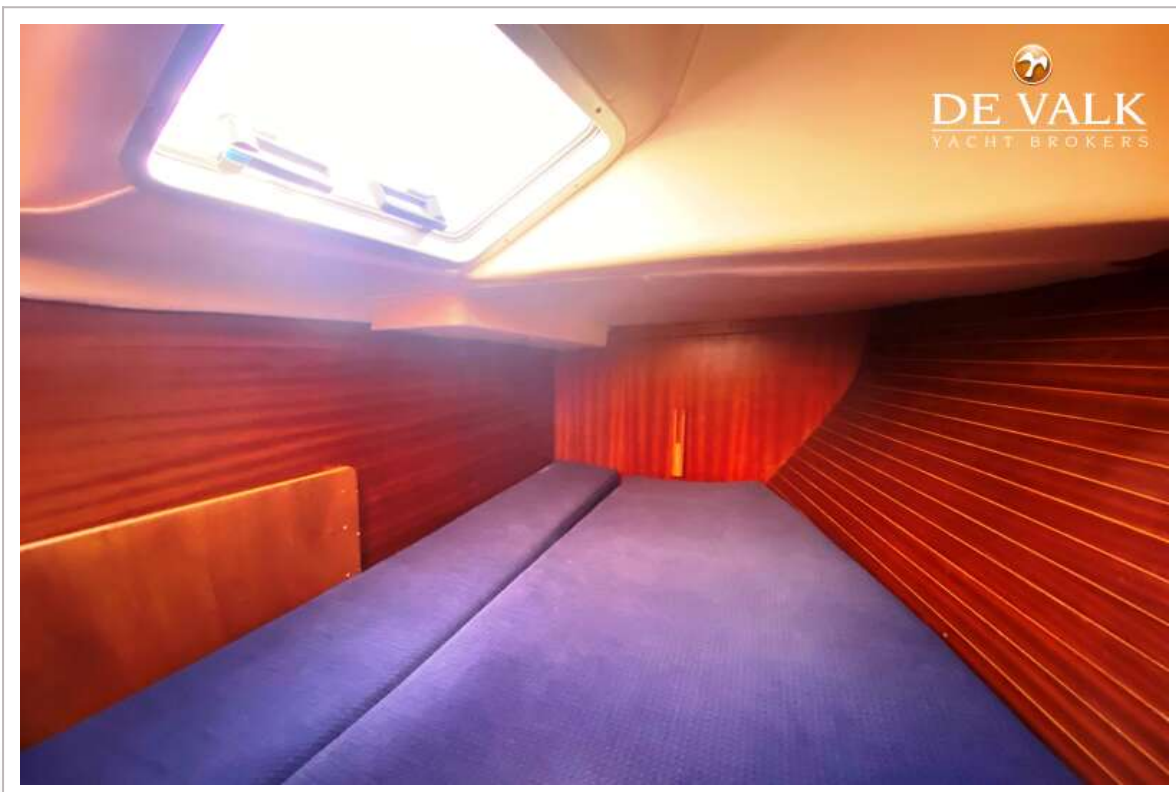
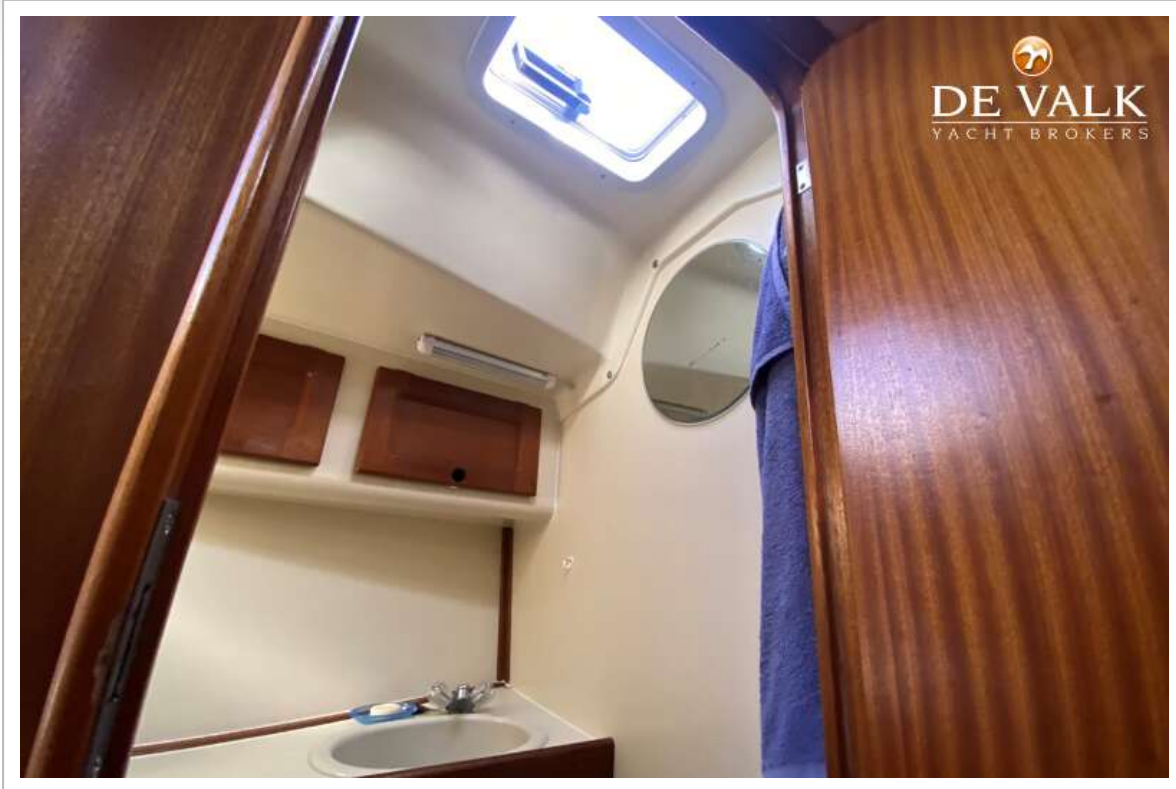
# BAVARIA 390 CARIBIC



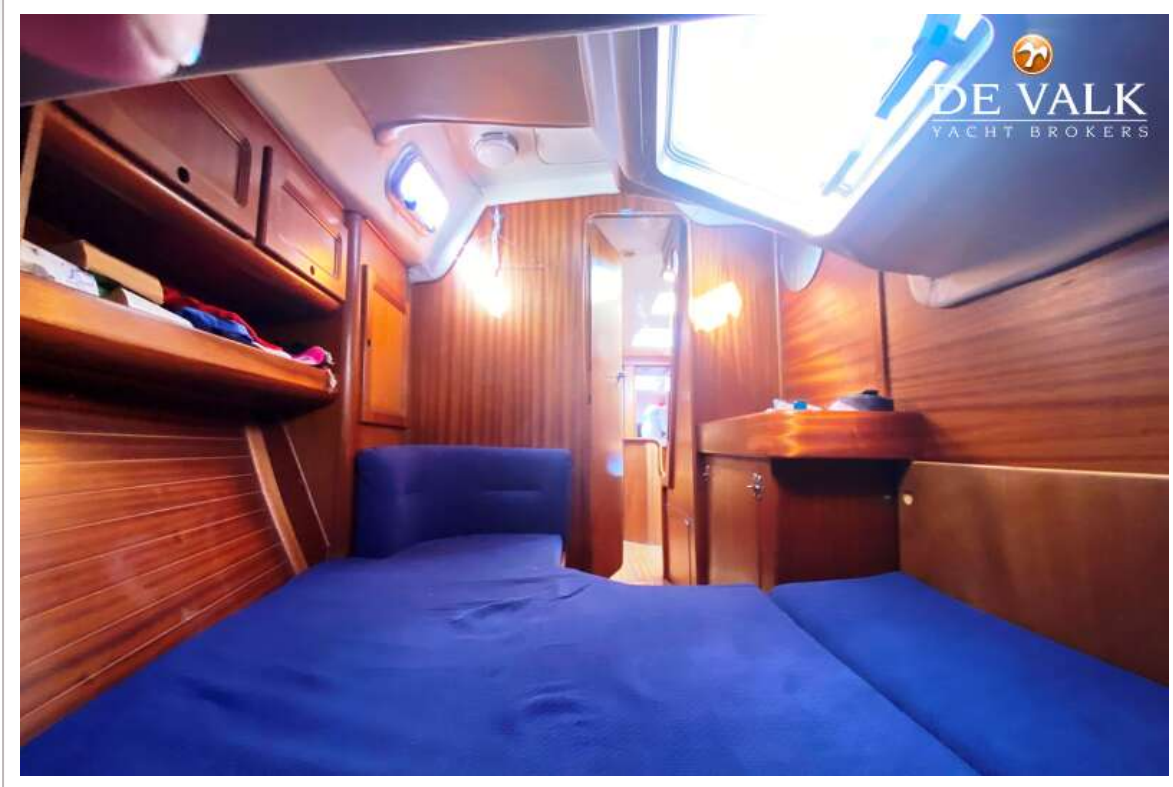
# BAVARIA 390 CARIBIC



# BAVARIA 390 CARIBIC

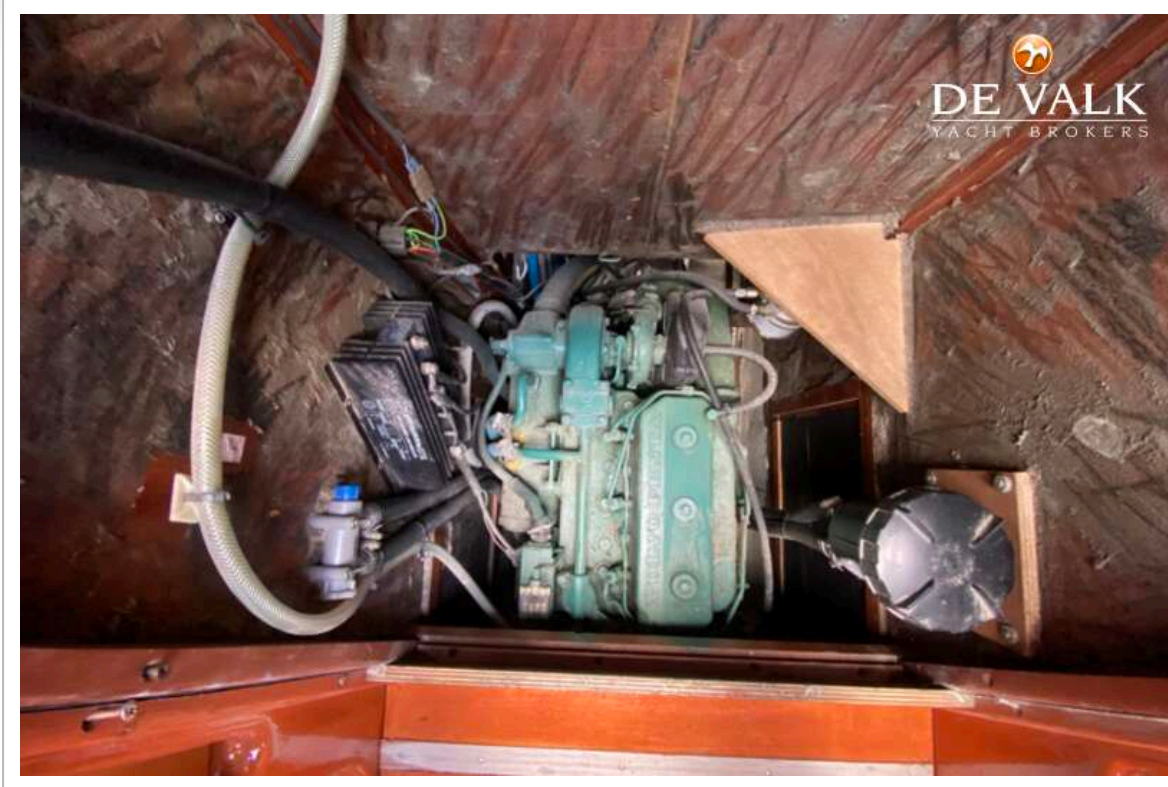


# BAVARIA 390 CARIBIC





# BAVARIA 390 CARIBIC



# BAVARIA 390 CARIBIC

