



DE VALK
YACHT BROKERS



CMN CUSTOM 30 M



DE VALK
YACHT BROKERS

BROKER'S COMMENTS

The 29,85 metre tri-deck motor yacht MARAM is built in steel and aluminium by French yard Chantier Naval de Marseille to a design by Michel Bigoin. She was delivered in 1989 with an ongoing refit and upgrading from 2016. The interior which accommodates 8/10 guests in 4/5 cabins consisting of a master suite, VIP suite, a double and two twins, all with en suite bathroom facilities. In addition, there are quarters for a captain and four crew. The Maram will be auctioned online at <https://bit.ly/Auction-Maram> Bids can only be placed online at Brightauctions.

Roberto Kelly

SPECIFICATIONS

Dimensions	29.87 x 5.55 x 2.50 (m)	Builder	Chantier Naval Marseille
Built	1989	Cabins	7
Material	Steel	Berths	13
Engine(s)	2 x Detroit 8V92TTA diesel	Hp/Kw	2 x 750.00 (hp), 551.25 (kw)
Asking price	€ 100.000 (VAT Paid)	Lying	contact sales office

CONTACT

Sales office	De Valk Barcelona	Telephone	+34932202825
Address	Barcelona region Barcelona Spain	E-mail	barcelona@devalk.nl

DISCLAIMER

These particulars are given in good faith as supplied but cannot be guaranteed.



GENERAL

Model	CMN CUSTOM 30 M
Type	motor yacht
LOA (m)	29,87
LWL (m)	27,00
Beam (m)	5,55
Draft (m)	2,50
Headroom (m)	2,00
Year built	1989
Launched	1989
Builder	Chantier Naval Marseille
Country	France
Designer	Michael Bigoin
Displacement (t)	170
Hull material	steel
Hull colour	off-white
Superstructure material	aluminium
Deck material	steel
Deck finish	non-skid paint
Superstructure deck finish	non-skid paint
Antifouling (year)	2018
Dorades	yes
Flybridge	yes
Fuel tank (litre)	14000
Level indicator (fuel tank)	yes
Fuel daytank (litre)	1000
Freshwater tank (litre)	7000
Level indicator (freshwater)	yes
Blackwater tank (litre)	500
Greywater tank (litre)	500
Wheel steering	yes



Inside helm position	yes
Emergency tiller	yes

ACCOMMODATION

Cabins	7
Berths	13
Crew cabin	3
Crew berths	5
Air-conditioning	yes
Dining room	yes
Galley	yes
Sink	yes
Cooker	yes
Oven	yes
Microwave	yes
Fridge	yes
Freezer	yes
Hot water system	yes
Water pressure system	yes

MACHINERY

No of engines	2
Make	Detroit
Type	8V92TTA
HP	750
kW	551.25
Fuel	diesel
Year installed	1989
Year of overhaul	2017
Maximum speed (kn)	12
Cruising speed (kn)	10



Range (nm)	1500
Engine hours	200
Engine cooling system	seawater
Drive	shaft
Generator	Cummins 65Kw
Generator 2	Cummins 28Kw

NAVIGATION

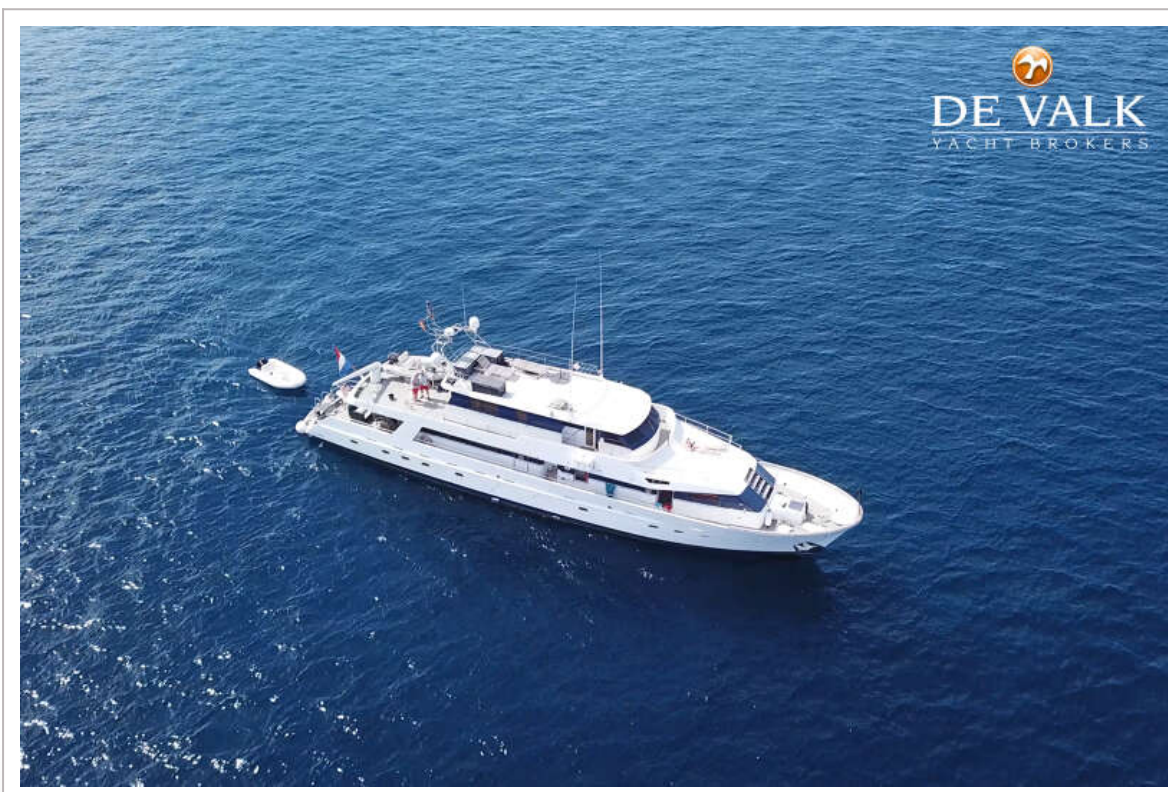
Compass	Navitron
Electric compass	yes
Depth sounder	yes
Log	yes
VHF	2 X I-COM
Autopilot	Navitron
Radar	SIMRAD
GPS	2 X GARMIN
Plotter	OpenCPN
AIS receiver	yes
AIS transponder	yes
Navigation lights	yes



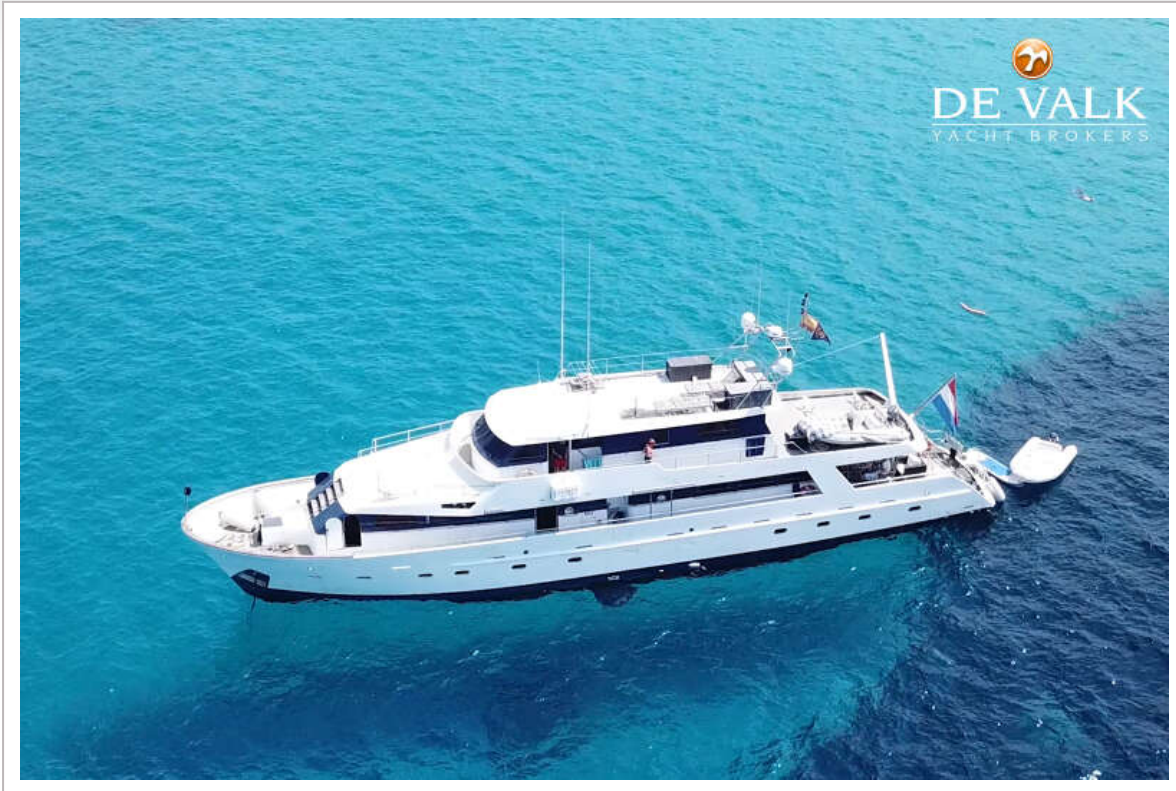
CMN CUSTOM 30 M



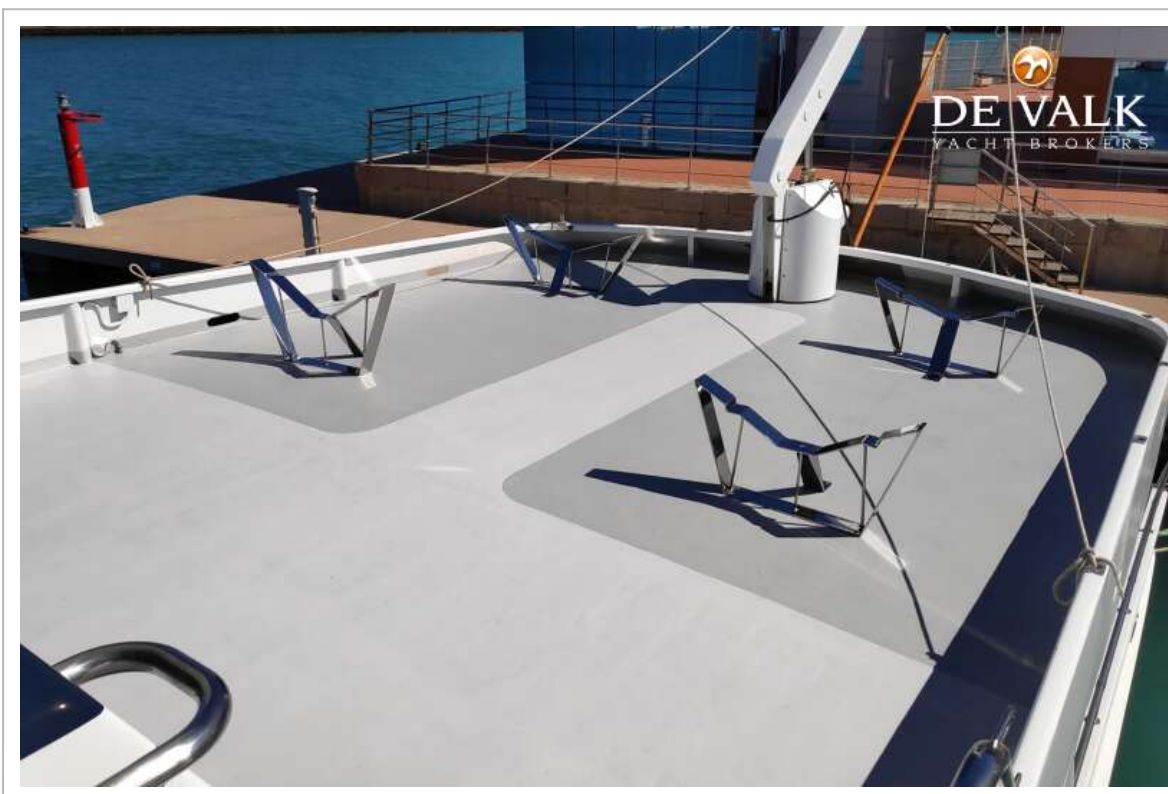
CMN CUSTOM 30 M



CMN CUSTOM 30 M



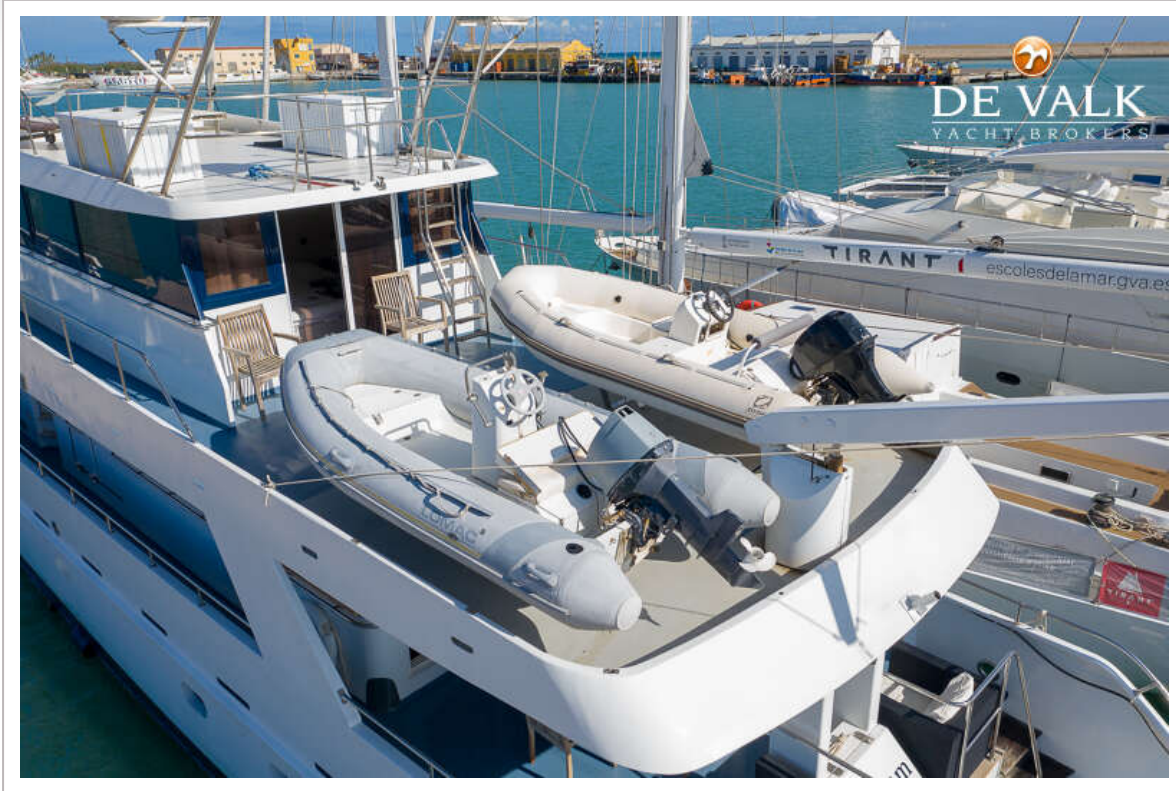
CMN CUSTOM 30 M



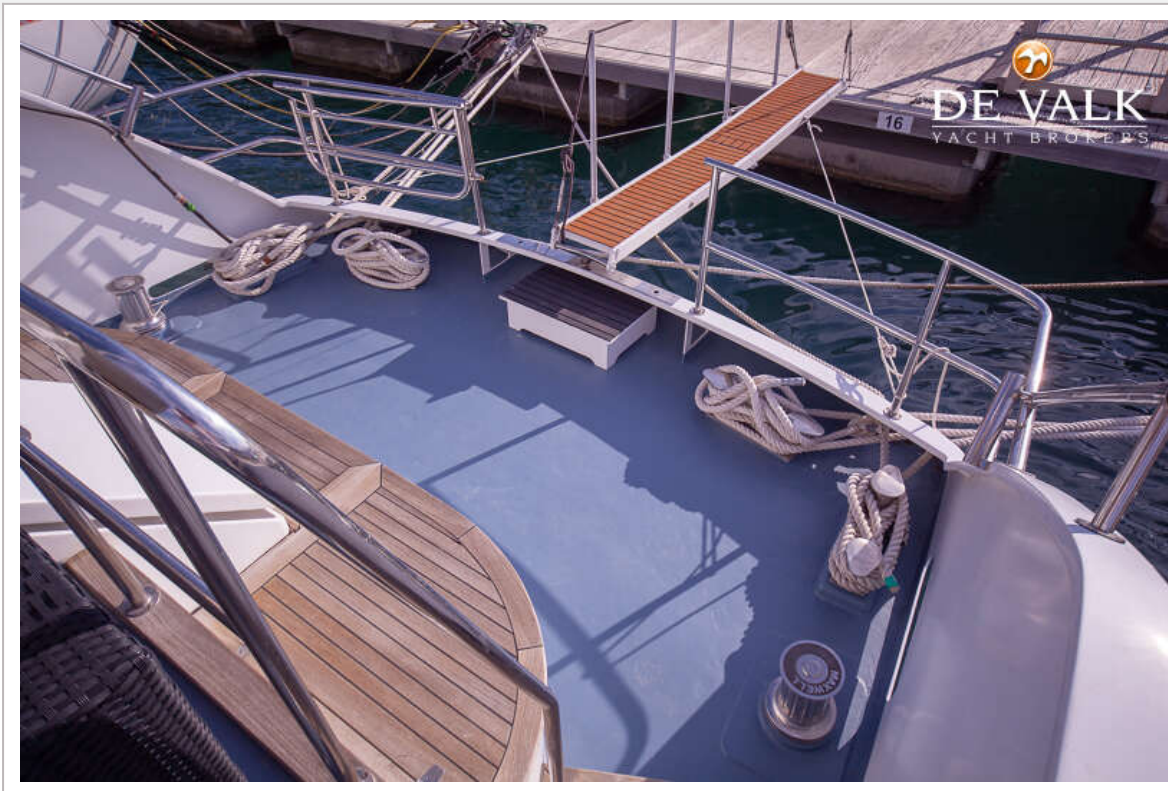
CMN CUSTOM 30 M



CMN CUSTOM 30 M



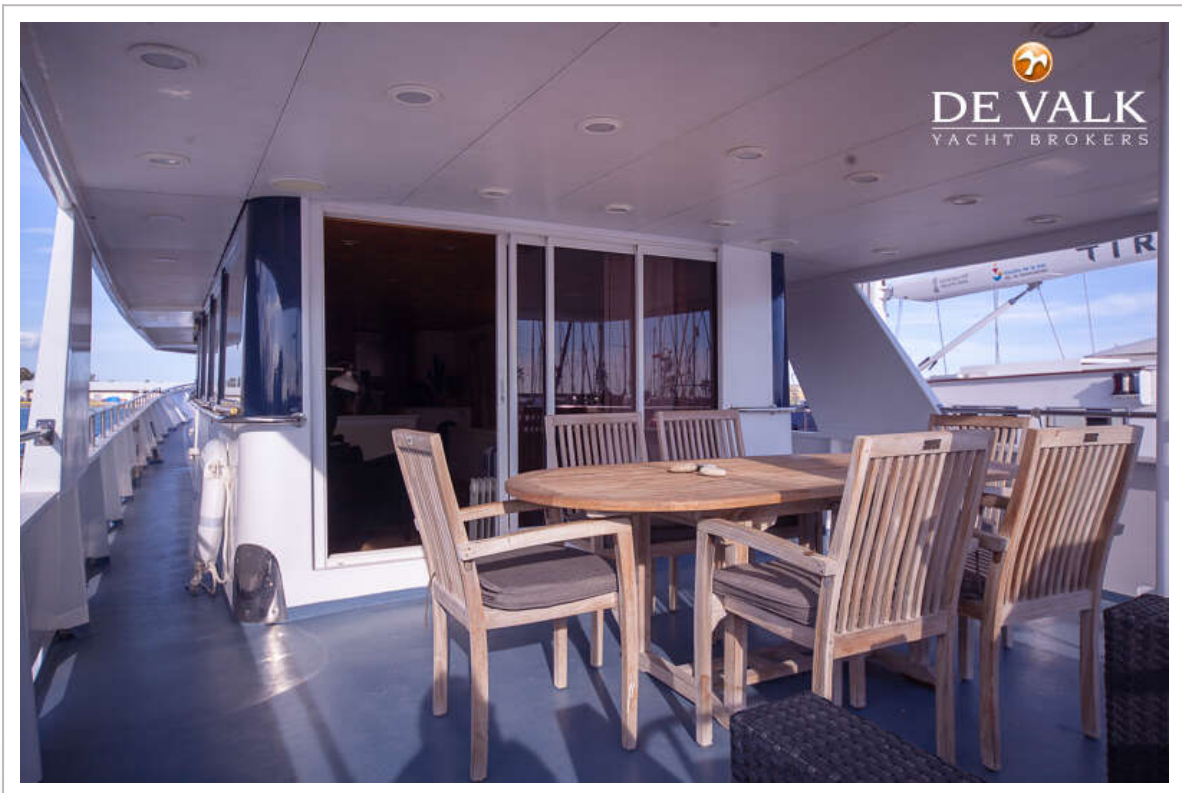
CMN CUSTOM 30 M



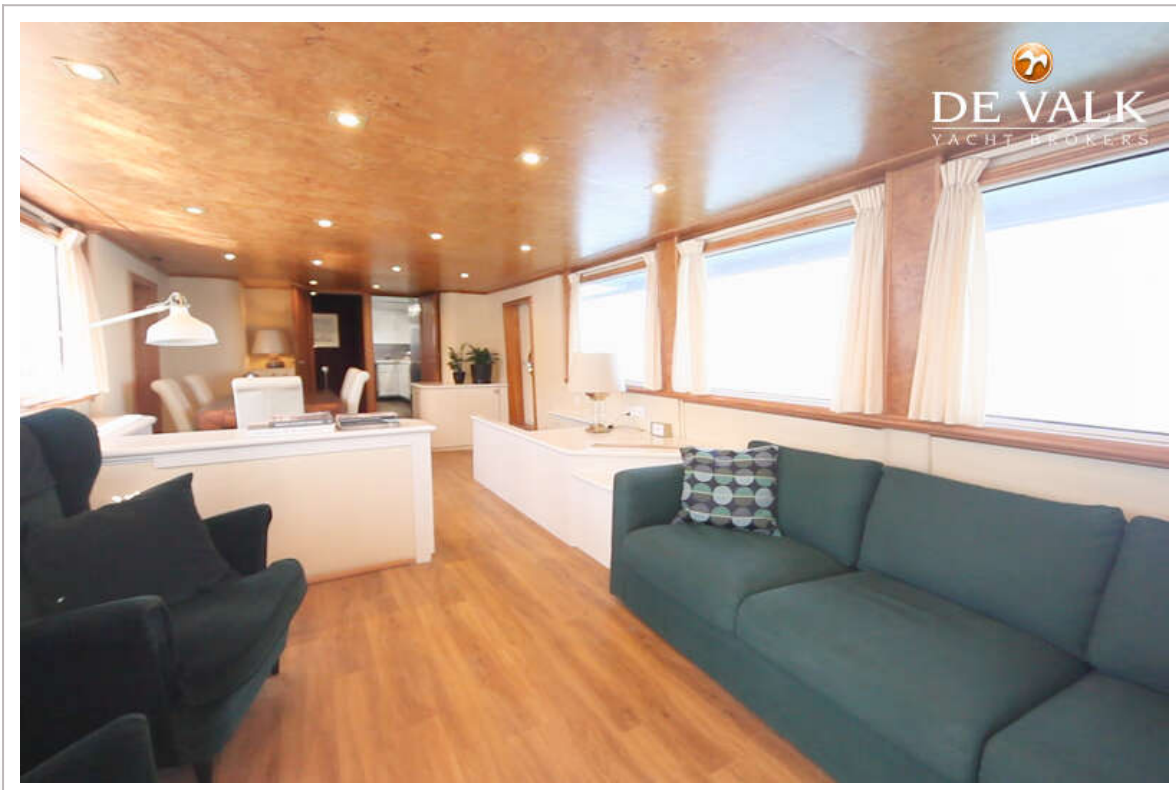
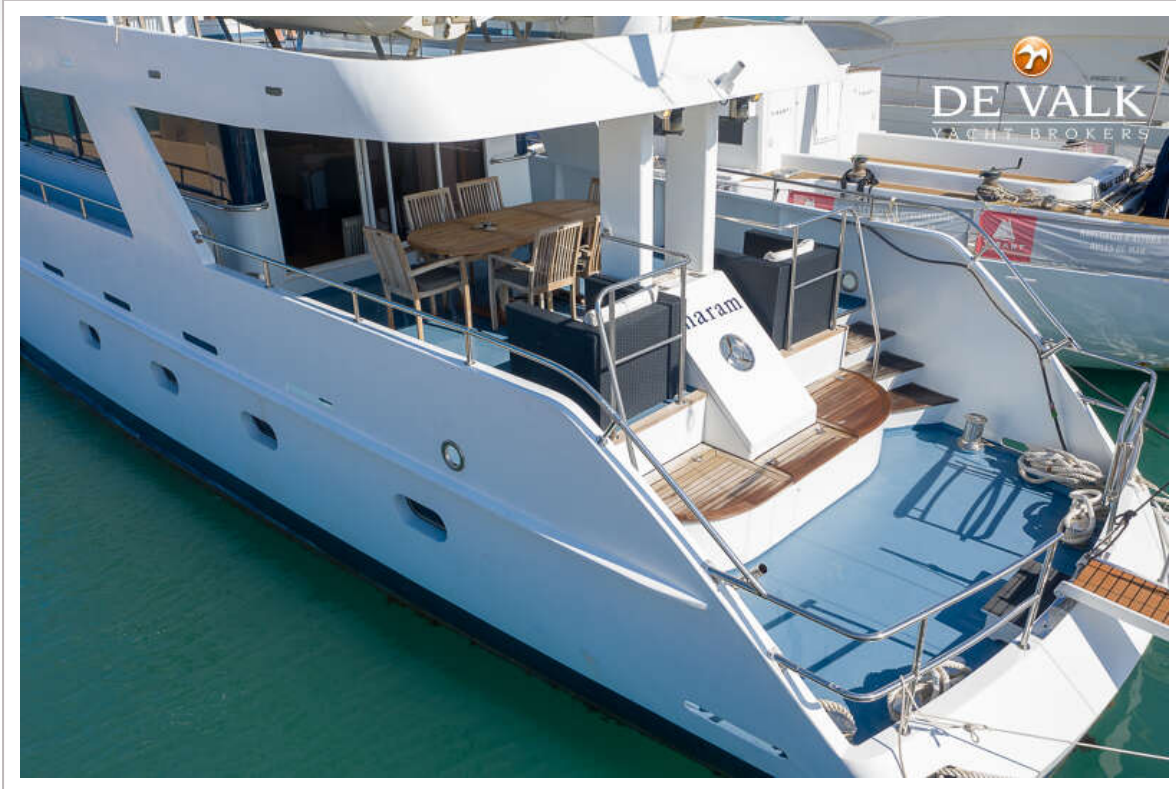
CMN CUSTOM 30 M



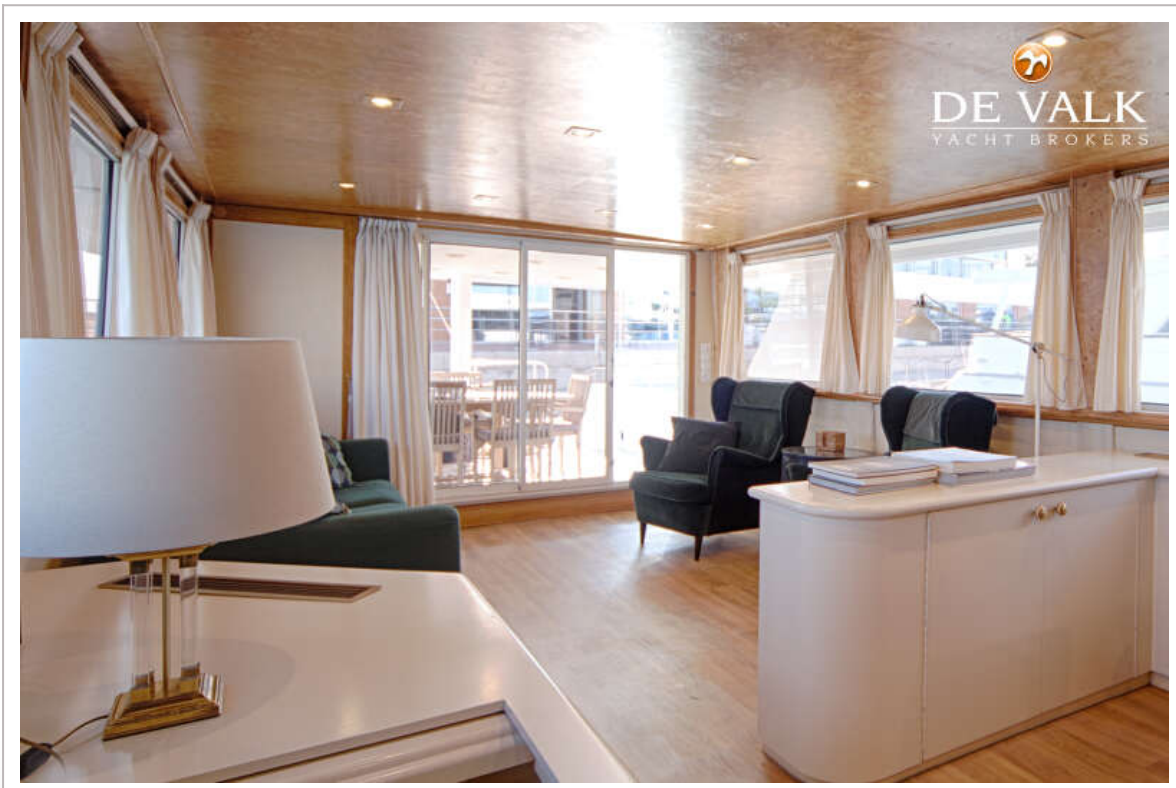
CMN CUSTOM 30 M



CMN CUSTOM 30 M



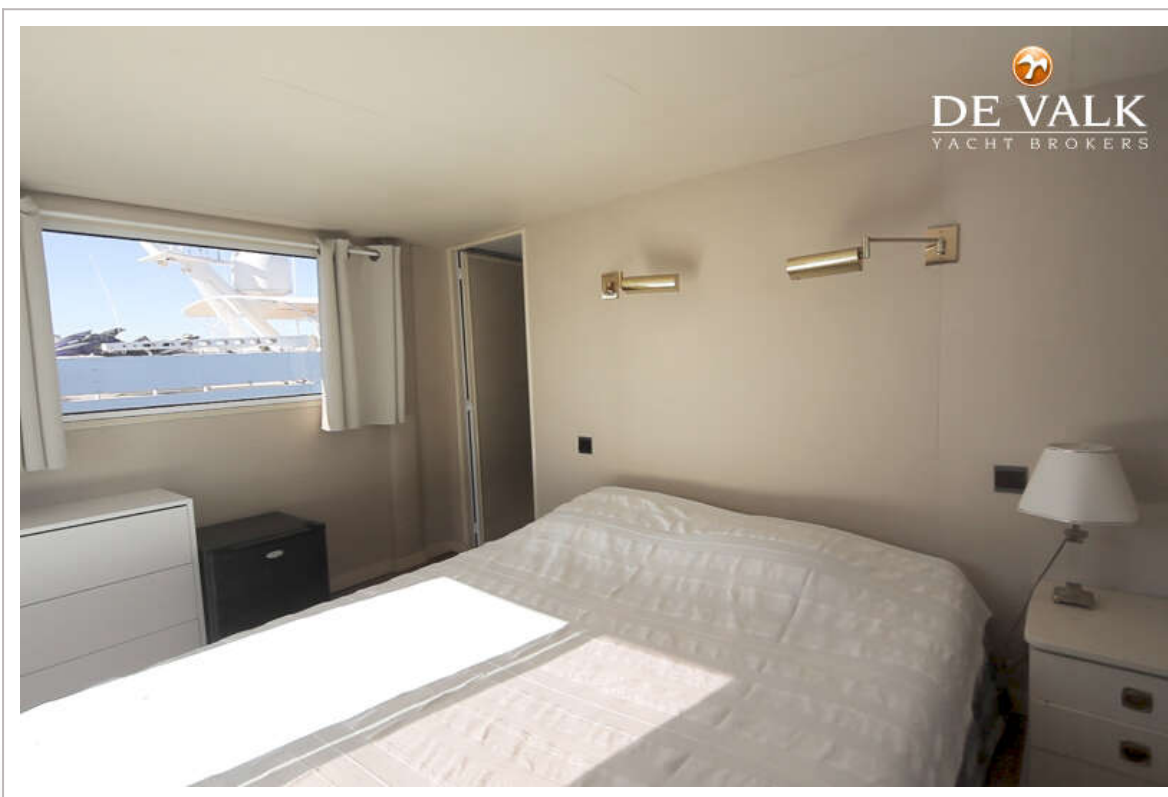
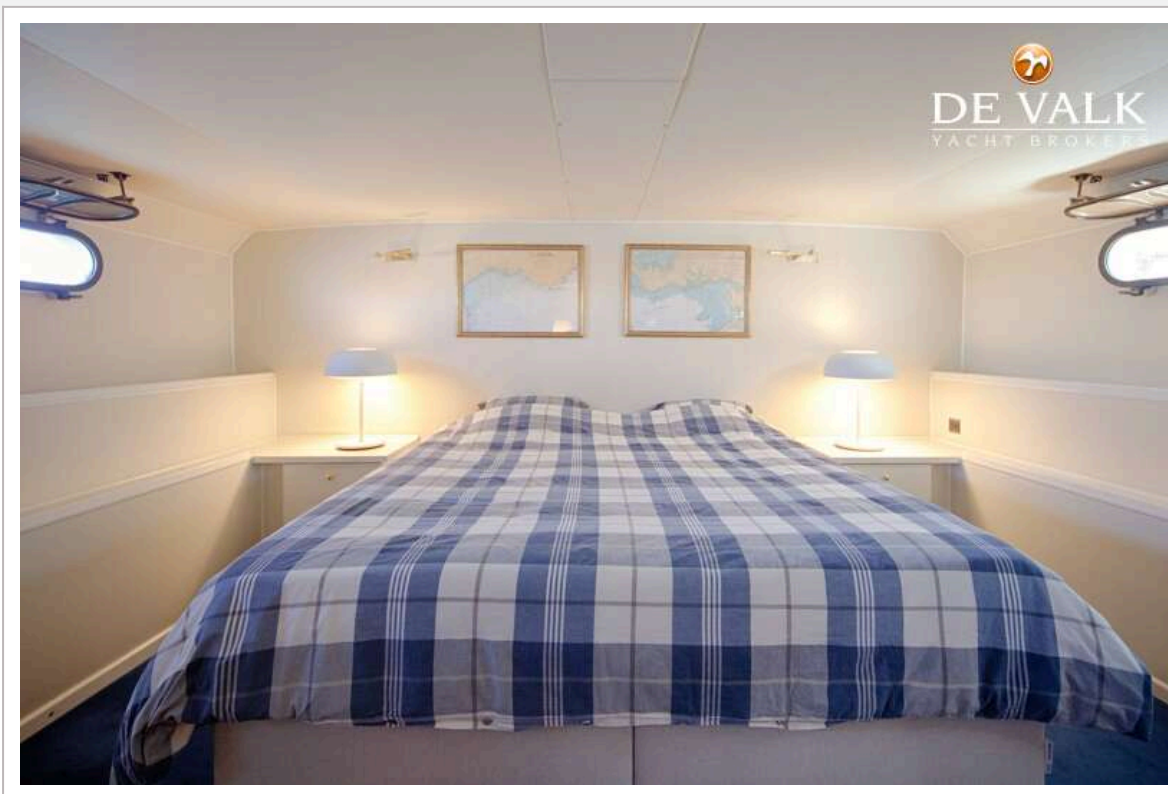
CMN CUSTOM 30 M

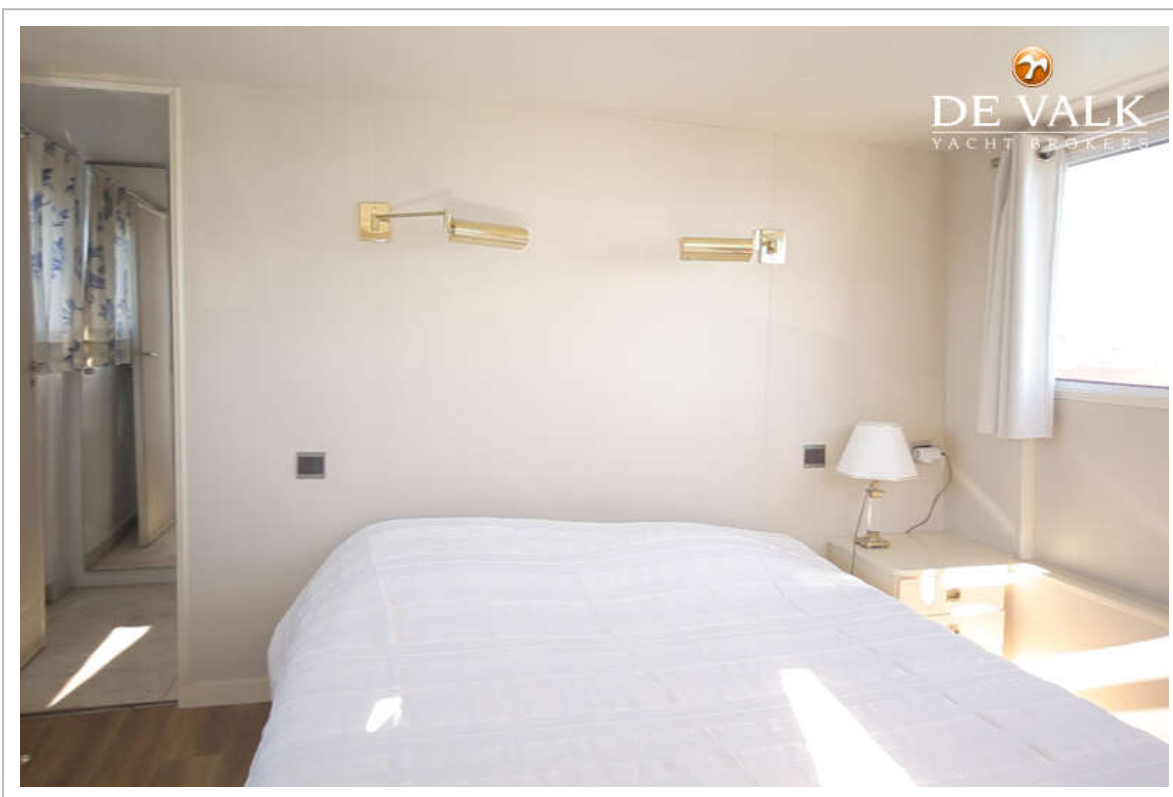


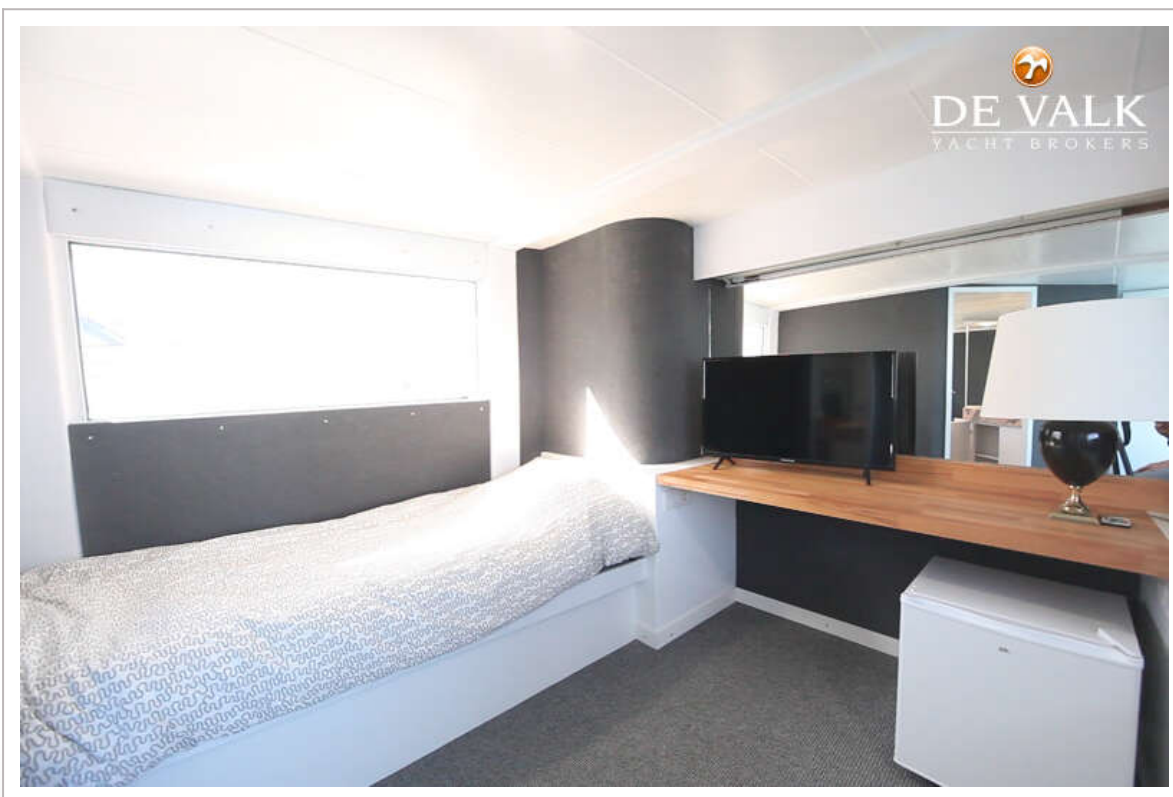
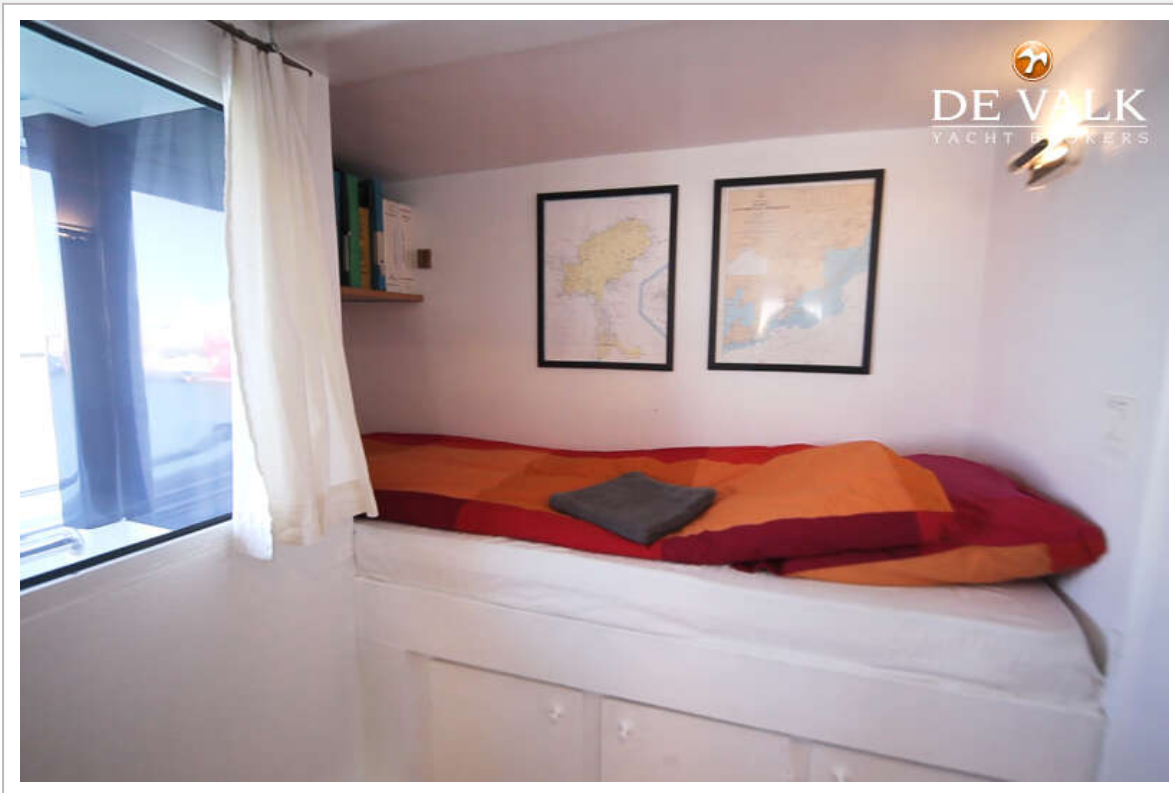
CMN CUSTOM 30 M



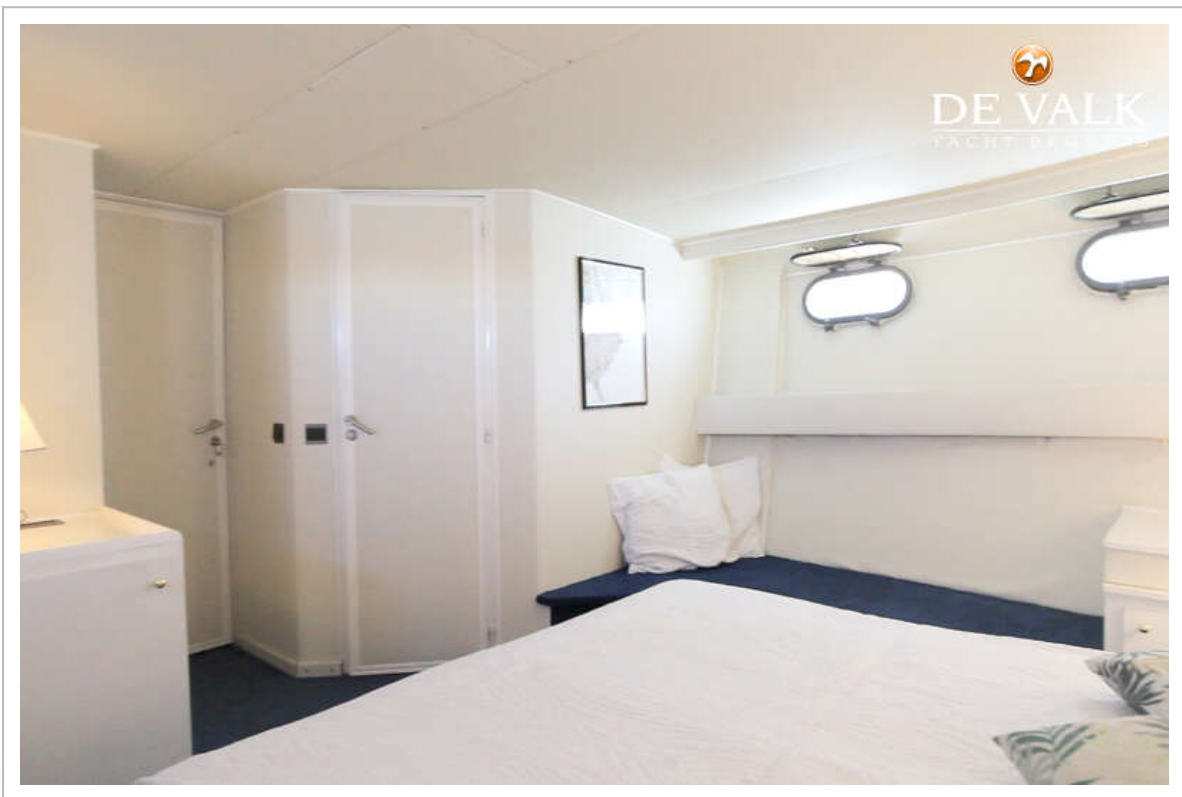
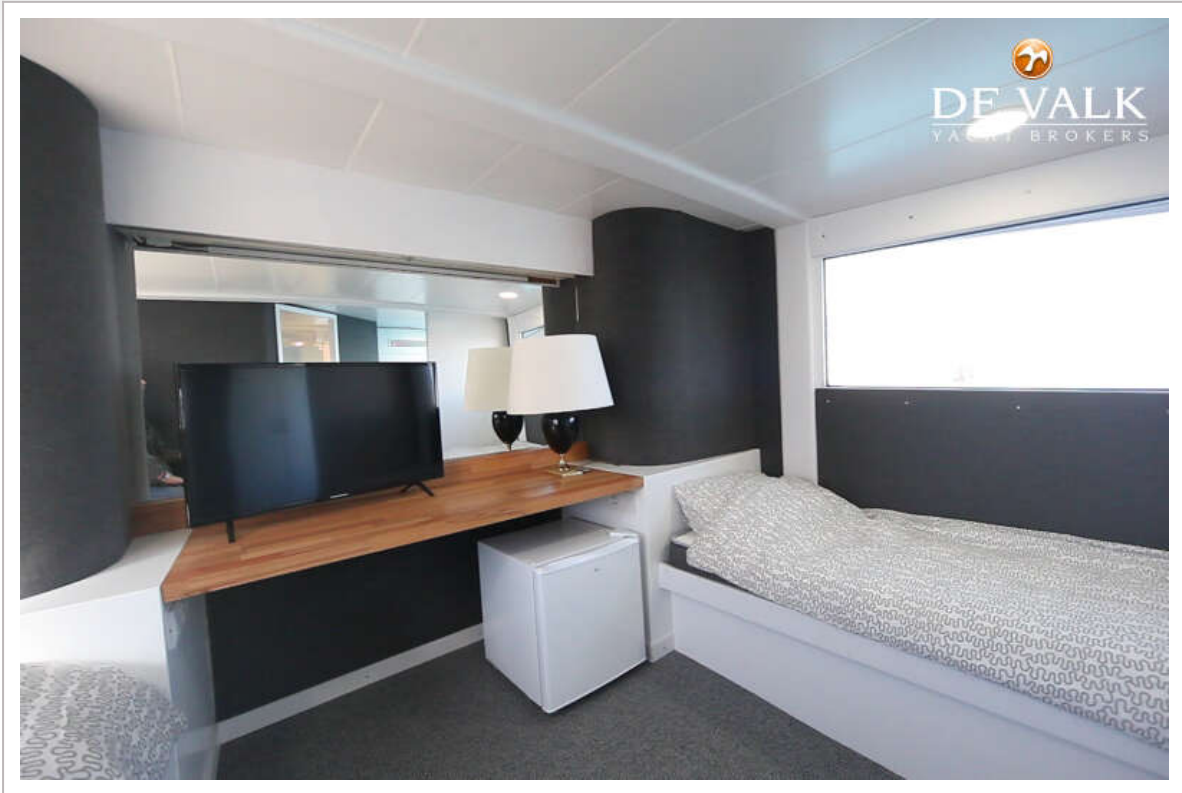
CMN CUSTOM 30 M

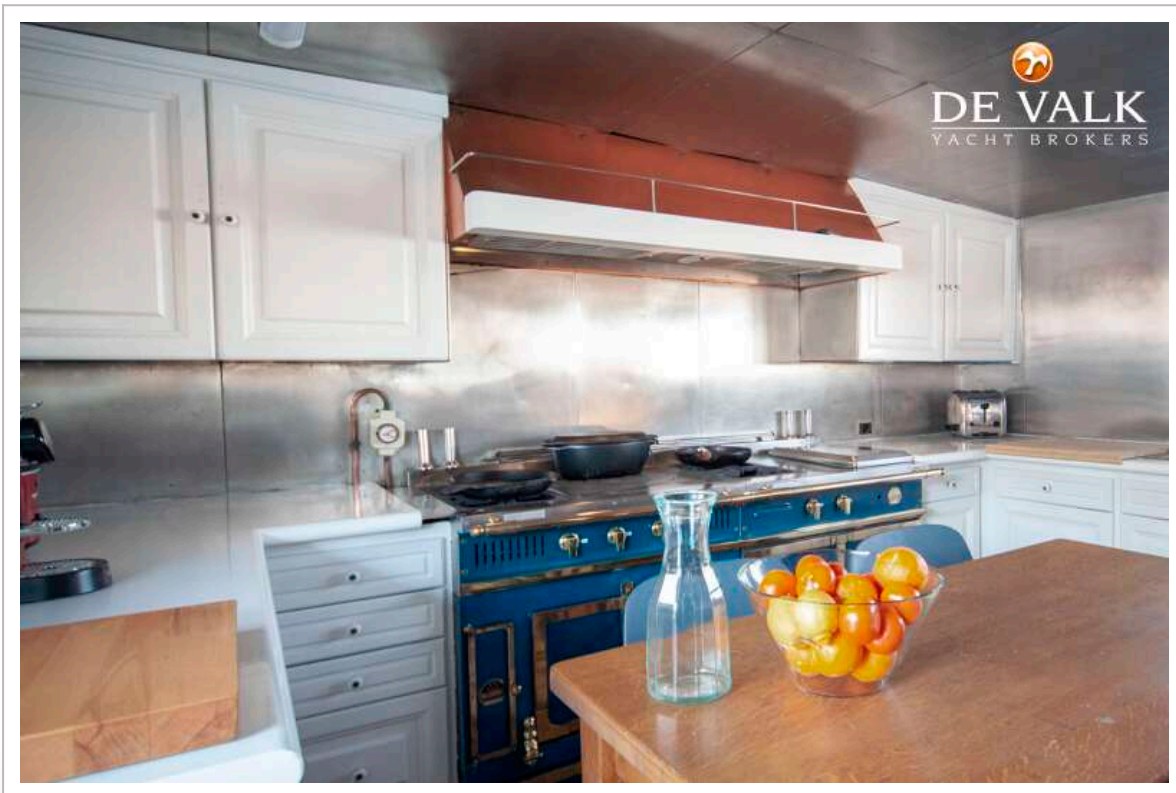
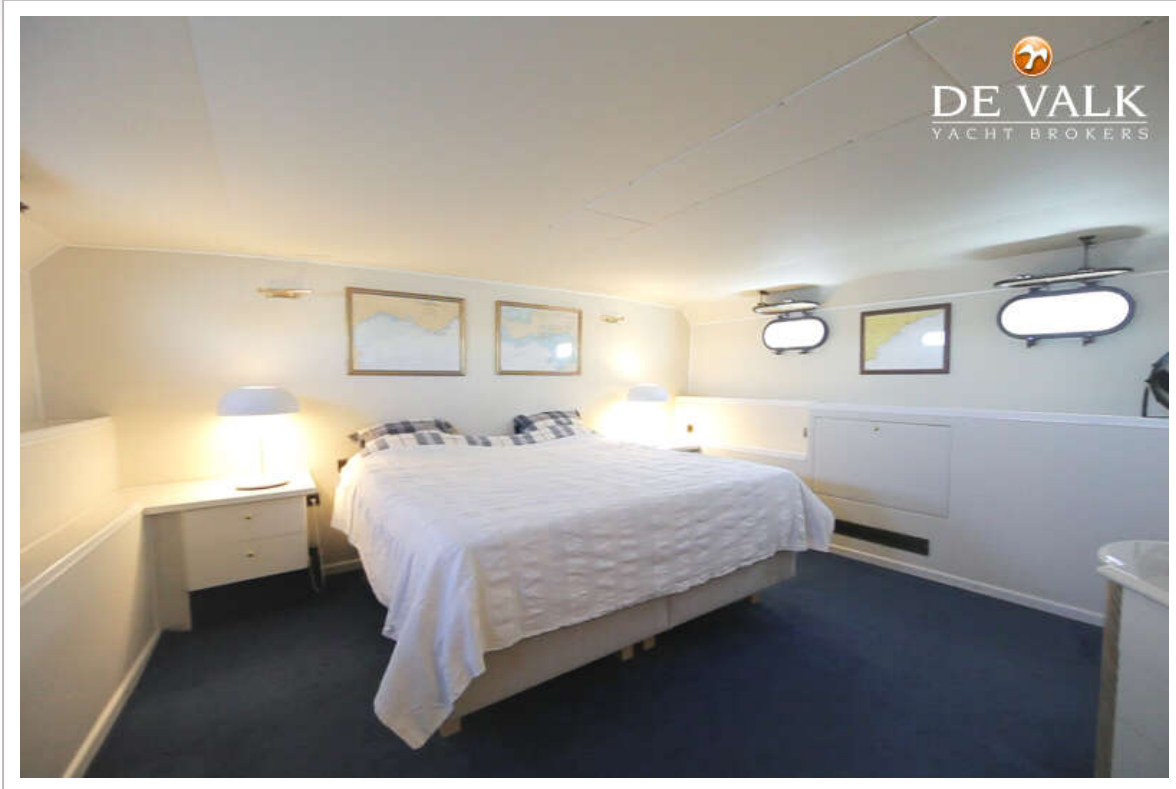






CMN CUSTOM 30 M





CMN CUSTOM 30 M

