



AZIMUT 46 E



BROKER'S COMMENTS

How about this in superb condition Azimut 46 Evolution? Offering lots of living space for family and friends with the 3 cabin + crew (or kids) layout. Outside in overall remarkable state; the hull, superstructure, cockpit, flybridge and all teak are in very good condition. You can tell she is well loved and taken care of since new. Maintenance is excellent, extensive overhaul service on engines. The very comfortable interior is also in line with the exterior. Her specification is complete with airco, water maker, dive compressor and generator. Ideal for long stay at anchorage if you wish.

Willem Koopmans

SPECIFICATIONS

Dimensions	14.60 x 4.36 x 1.02 (m)	Builder	Azimut Yachts
Built	2006	Cabins	3
Material	GRP	Berths	7
Engine(s)	2 x Caterpillar C9 6L diesel	Hp/Kw	2 x 505.00 (hp), 371.40 (kw)
Asking price	sold (VAT)	Lying	contact sales office

CONTACT

Sales office	De Valk Costa Blanca	Telephone	+34 96 50 21 569
Address	Costa Blanca Region 03730 Javea Alicante ES	E-mail	costablanca@devalk.nl

DISCLAIMER

These particulars are given in good faith as supplied but cannot be guaranteed.



GENERAL

Model	AZIMUT 46 E
Type	motor yacht
LOA (m)	14,60
Beam (m)	4,36
Draft (m)	1,02
Headroom (m)	2,00
Year built	2006
Builder	Azimut Yachts
Country	Italy
Designer	Stefano Righini
Displacement (t)	13
CE norm	B
Hull material	GRP
Hull colour	white
Hull shape	deep-V
Superstructure material	GRP
Deck material	GRP
Deck finish	non-skid moulded in
Superstructure deck finish	non-skid moulded in
Cockpit deck finish	teak
Antifouling (year)	2020
Flybridge	yes
Flybridge suncover	yes
Fuel tank (litre)	aluminium 700
Fuel tank 2 (litre)	aluminium 700
Level indicator (fuel tank)	yes
Freshwater tank (litre)	polyethylene 600
Level indicator (freshwater)	yes
Greywater tank (litre)	yes
Wheel steering	hydraulic



Inside helm position	yes
Flybridge helm position	hydraulic
Emergency tiller	yes
Extra info	Very well looking hull and superstructure
Extra info	In very neat condition

ACCOMMODATION

Cabins	3
Berths	7
Crew cabin	yes
Crew berths	1
Interior	cherry
Floor	carpet
Open cockpit	yes
Aft deck	yes
Saloon	New cushion upholstery
Headroom saloon (m)	2
Air-conditioning	2 x
Dinette	yes
Sliding door to cockpit	yes
Galley	yes
Countertop	Duropol
Sink	Double
Cooker	ceramic 3 burner
Microwave	Teka
Fridge	Dometic Coolmatic CR, new 2021
Freezer	In fridge
Hot water system	220V + engine
Water pressure system	electrical
Owners cabin	double bed
Wardrobe	hanging/drawers/shelves



Bathroom	en suite
Toilet	en suite
Toilet system	electric
Wash basin	in the bathroom
Shower	en suite
Guest cabin 1	double bed
Wardrobe	hanging/drawers/shelves
Bathroom	shared
Toilet	shared
Toilet system	electric
Wash basin	in the bathroom
Shower	shared
Guest cabin 2	bunk bed
Wardrobe	hanging and shelves
Bathroom	shared
Toilet	shared
Toilet system	electric
Wash basin	at the toilet
Shower	shared
Crew cabin(s)	yes

MACHINERY

No of engines	2
Make	Caterpillar
Type	C9 6L
HP	505
kW	371,40
Fuel	diesel
Year installed	2006
Year of overhaul	2020
Maximum speed (kn)	26



Cruising speed (kn)	22
Engine hours	930
Engine cooling system	freshwater heat exchanger
Drive	shaft
Engine controls	electrical
Bowthruster	electric
Sternthruster	electric
Exhaust	watercooled
Propeller shaft material	stainless steel
Manual bilge pump	yes
Electric bilge pump	yes
Electrical installation	24/ 228
Generator	wet exhaust Kohler
Running hours generator	800
Start battery	2
Service battery	2 x 24 volt 180 Amp, new 2020
Generator battery	yes
Battery charger	Cristec CPS3 24V-60Amp
Shorepower	with cable
Watermaker	Selmar Watermaker (conserved state)
Trimtabs	yes
Extra info	Dive compressor

NAVIGATION

Compass	yes
Electric compass	On pilot
Depth sounder/log	Raymarine ST60
VHF	Simrad RS 81
Autopilot	Raymarine St 6001
Rudder angle indicator	On pilot
Radar/GPS/plotter	Raymarine E 120



Navtex	Furuno NX 300
EPIRB	New 2021
Navigation lights	yes

EQUIPMENT

Fixed windscreen	yes
Cockpit cover	Over instruments and seats.
Bimini	yes
Cockpit cushions	New upholstery
Cockpit table	yes
Cockpit chairs	yes
Bathing platform	yes
Transom door	yes
Gangway	Hydraulic
Deck shower	yes
Anchor	yes
Anchor chain	yes
Windlass	electrical
Dinghy	Aaermarine Espace Kart 270 (new 2016)
Outboard	Honda BF 10 hp
Life raft	container Arimar
Life raft (pers)	6
Last life raft survey	2021
Lifejackets	yes
Wiper	yes
Horn	yes
Radar reflector	yes
Fenders	yes
Mooring lines	yes
TV	On lift
Radio-cd player	yes



Cockpit speakers	yes
Speakers in salon	yes
Fire extinguisher	yes
Latest extinguisher survey	2021



AZIMUT 46 E



AZIMUT 46 E



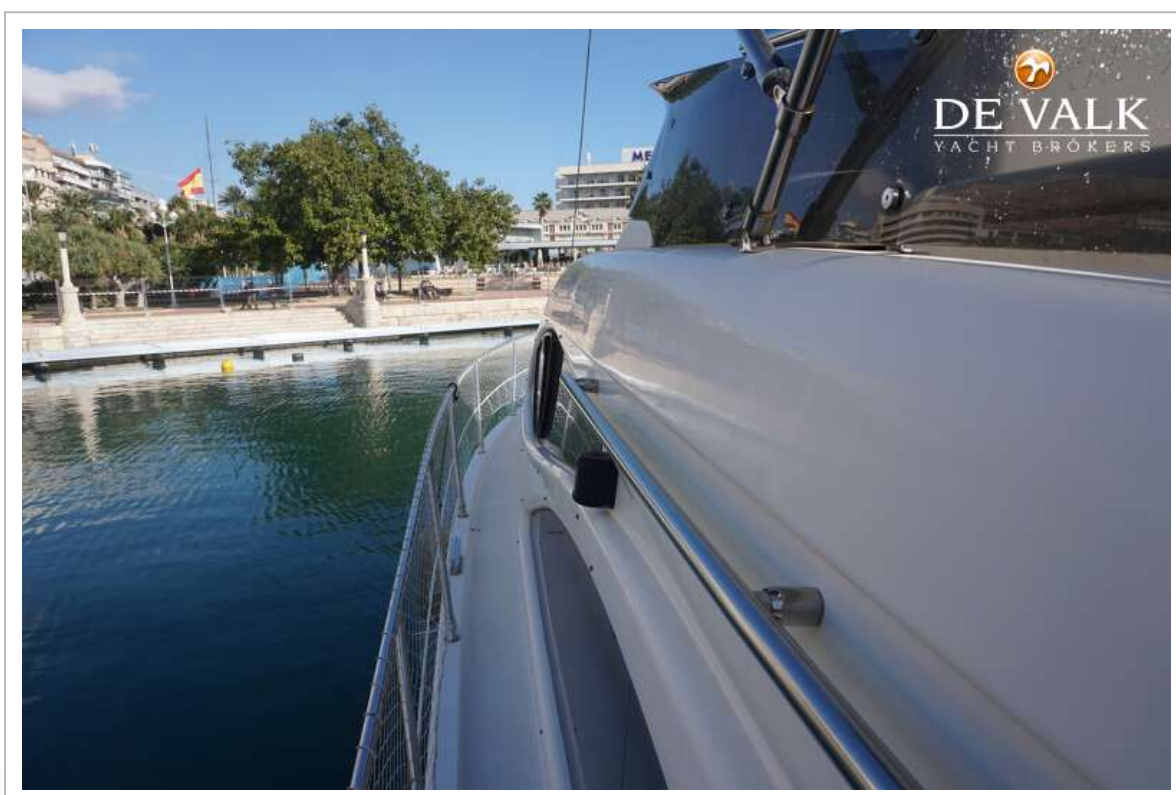
AZIMUT 46 E



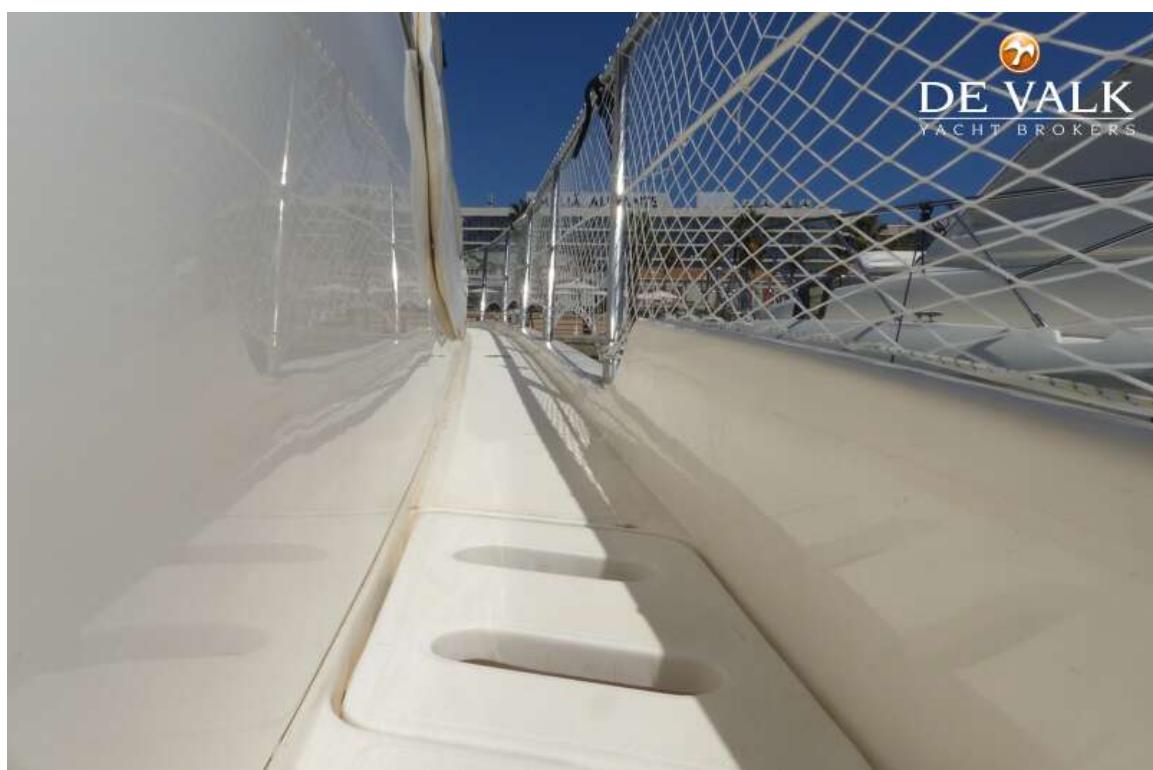
AZIMUT 46 E



AZIMUT 46 E



AZIMUT 46 E



AZIMUT 46 E



AZIMUT 46 E



AZIMUT 46 E



AZIMUT 46 E



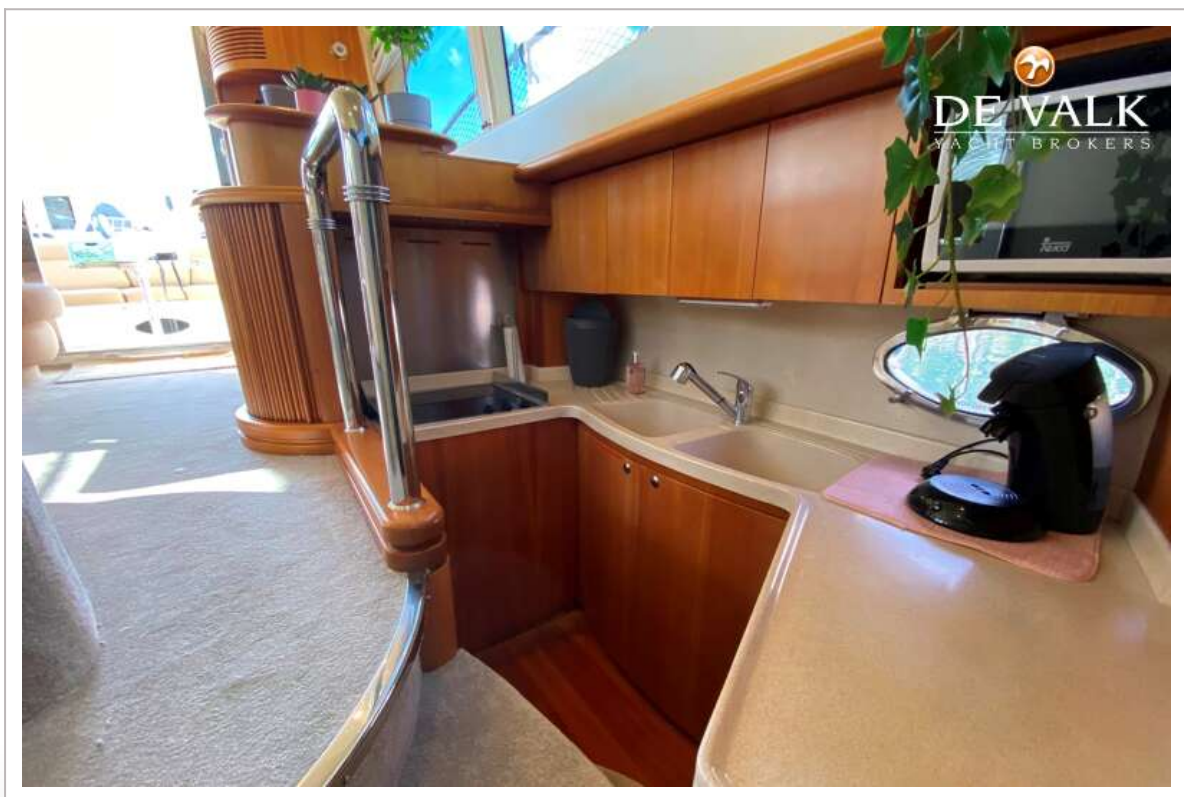
AZIMUT 46 E



AZIMUT 46 E



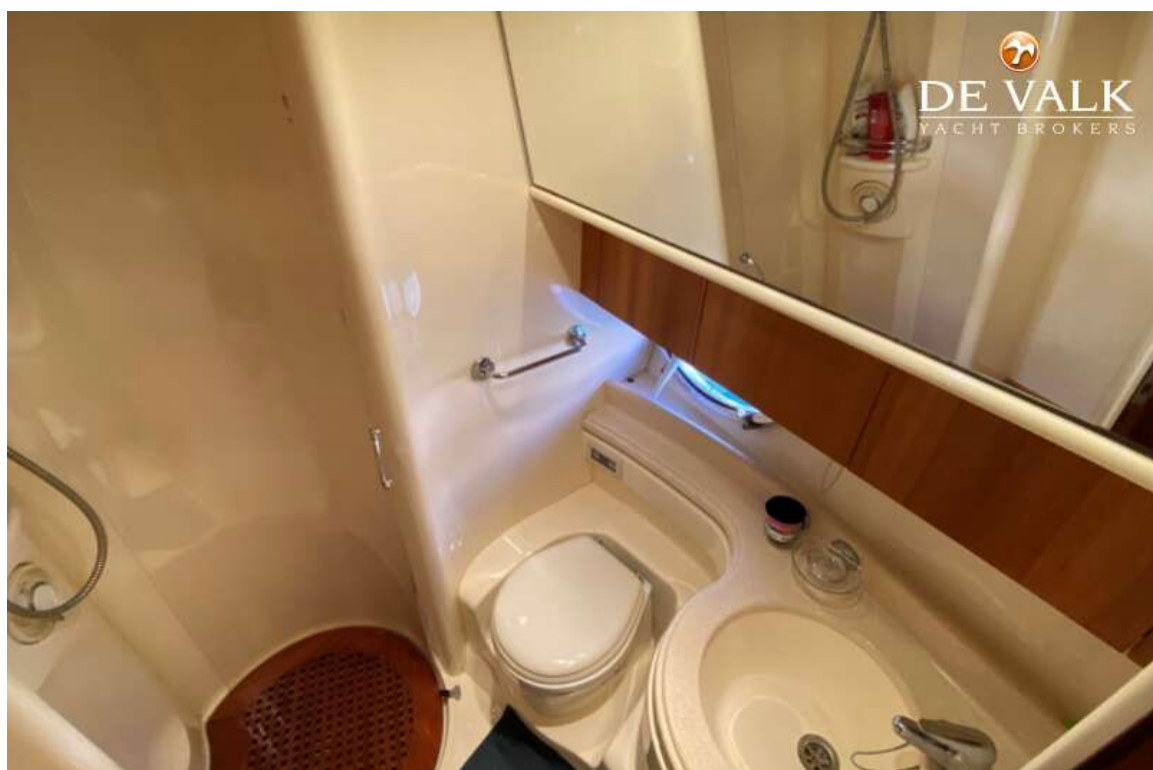
AZIMUT 46 E

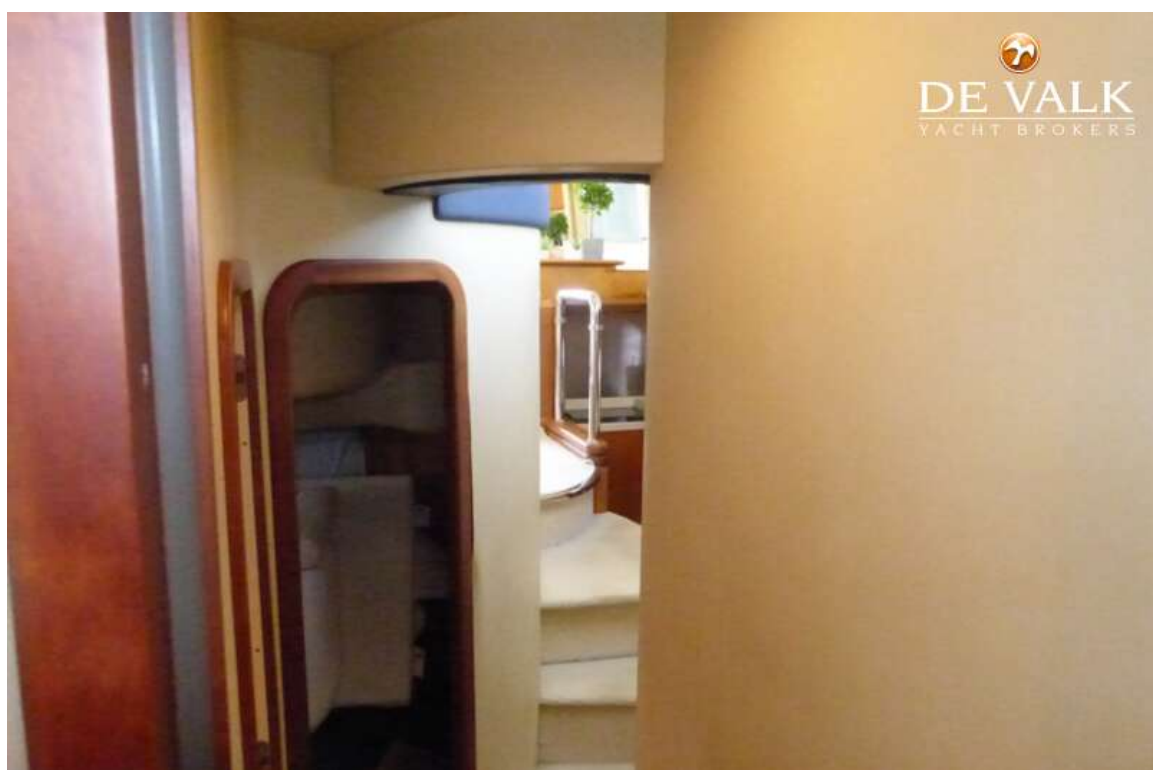


AZIMUT 46 E

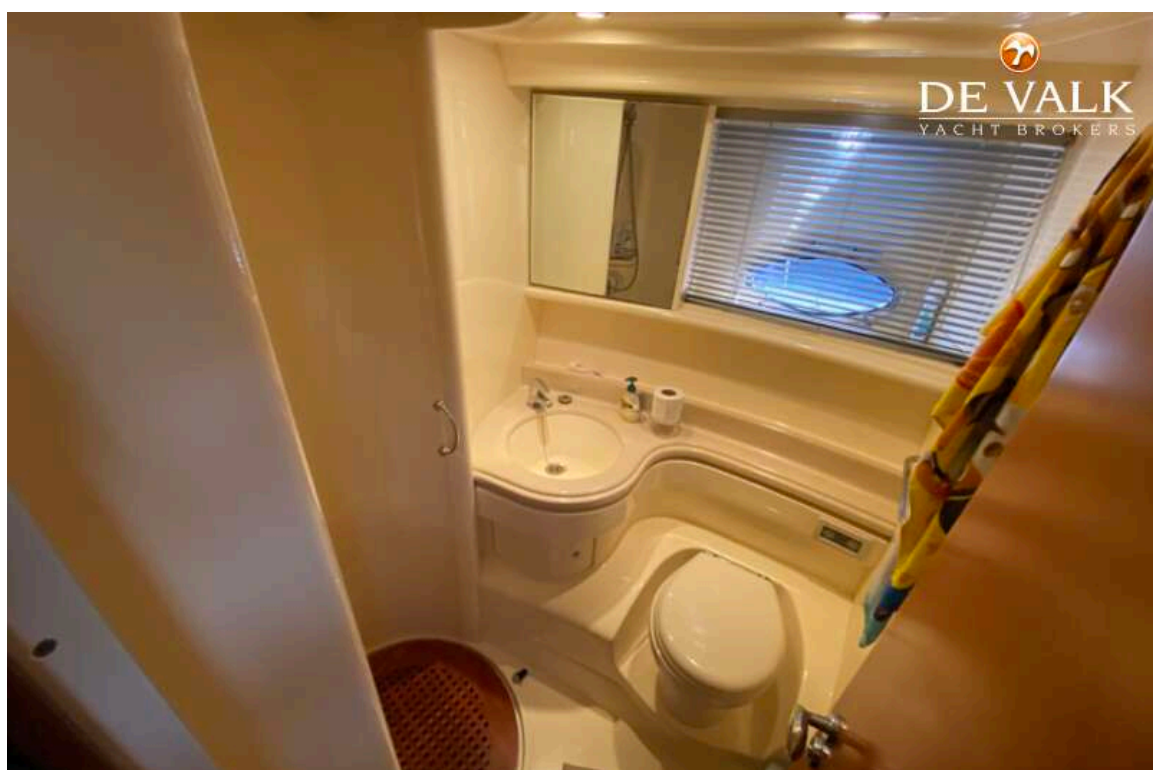


AZIMUT 46 E





AZIMUT 46 E



AZIMUT 46 E



AZIMUT 46 E

