



DE VALK
YACHT BROKERS



MOODY 376



DE VALK
YACHT BROKERS

BROKERAGE | CHARTER | BERTHS | FINANCE | INSURANCE | YACHT MANAGEMENT

BROKER'S COMMENTS

This classic Moody 376 is an ideal spacious cruiser for long stay on board. Very solid basics but she desires some time and effort to bring her back in full glory. She can sail today, but for sure she is in need of upgrading. All very doable and also within a fair budget, especially if you are a bit handy. Very good engine and technical report; rigging replaced in 2008. This model is looking for a new enthusiastic loving owner. A great opportunity for the one who is looking for an immense aft cabin, great galley and safe and reliable sail handling. Any reasonable offer will be considered.

Willem Koopmans

SPECIFICATIONS

Dimensions	11.53 x 3.81 x 1.70 (m)	Builder	Marine Projects (Plymouth) Ltd.
Built	1990	Cabins	2
Material	GRP	Berths	
Engine(s)	1 x Perkins 4108 diesel	Hp/Kw	50.00 (hp), 36.75 (kw)
Asking price	sold (VAT)	Lying	contact sales office

CONTACT

Sales office	De Valk Costa Blanca	Telephone	+34 96 50 21 569
Address	Costa Blanca Region 03730 Javea Alicante ES	E-mail	costablanca@devalk.nl

DISCLAIMER

These particulars are given in good faith as supplied but cannot be guaranteed.



GENERAL

Model	MOODY 376
Type	sailing yacht
LOA (m)	11,53
Beam (m)	3,81
Draft (m)	1,70
Air draft (m)	16,00
Headroom (m)	1,90
Year built	1990
Builder	Marine Projects (Plymouth) Ltd.
Country	Great Britain
Designer	Bill Dixon / Angus Primrose Ltd.
Displacement (t)	7373
Ballast (tonnes)	2950
CE norm	NA
Hull material	GRP
Hull colour	white
Hull shape	round-bilged
Keel type	fin keel
Superstructure material	GRP
Deck material	GRP
Deck finish	non-skid moulded in
Superstructure deck finish	non-skid moulded in
Cockpit deck finish	teak Needs replacement
Antifouling (year)	2018, cleaned by diver 2020
Dorades	yes
Window frame	aluminium
Window material	tempered glass
Deckhatch	yes
Fuel tank (litre)	204
Level indicator (fuel tank)	yes



Freshwater tank (litre)	250
Level indicator (freshwater)	yes
Wheel steering	cable steering
Emergency tiller	yes

ACCOMMODATION

Cabins	2
Interior	teak
Floor	teak and holly
Headroom saloon (m)	1,95
Chart table	yes
Aft Cabin	yes
Dinette	yes
Galley	yes
Countertop	yes
Sink	yes
Cooker	yes
Oven	yes
Gas alarm	yes
Microwave	yes
Fridge	yes
Hot water system	220V + engine
Water pressure system	electrical
Owners cabin	yes
Bed length (m)	2,1
Wardrobe	hanging/drawers/shelves
Bathroom	yes

MACHINERY

No of engines	1
Make	Perkins



Type	4108
HP	50
kW	36,75
Fuel	diesel
Year installed	1990
Maximum speed (kn)	7,5
Cruising speed (kn)	6
Consumption (l/hr)	2,2
Engine hours	2000
Engine cooling system	freshwater heat exchanger
Drive	shaft
Propeller type	fixed
Propeller blades	2
Propeller shaft material	stainless steel
Shaft lubrication	water
Manual bilge pump	yes
Electric bilge pump	yes
Shorepower	with cable

NAVIGATION

Compass	yes
Depth sounder	Stowe
Log	Stowe
Windset	Stowe
Autopilot	Raymarine wheel pilot
Radar	Raymarine Pathfinder RL7

EQUIPMENT

Sprayhood	yes
Bathing platform	yes
Anchor	yes



Anchor chain	yes
Windlass	yes
Fenders	yes
Mooring lines	yes
Radio	Kenwood
DVD player	With Hyundai screen

RIGGING

Rigging	sloop
Standing rigging	wire Replaced 2008
Material mast	aluminium
Spreaders	yes
Stoway mast	yes
Genoa	yes
Genoa furler	yes
Boomvang	yes
Genoa sheetwinches	2 speed
Multifunctional winches	yes



MOODY 376



MOODY 376

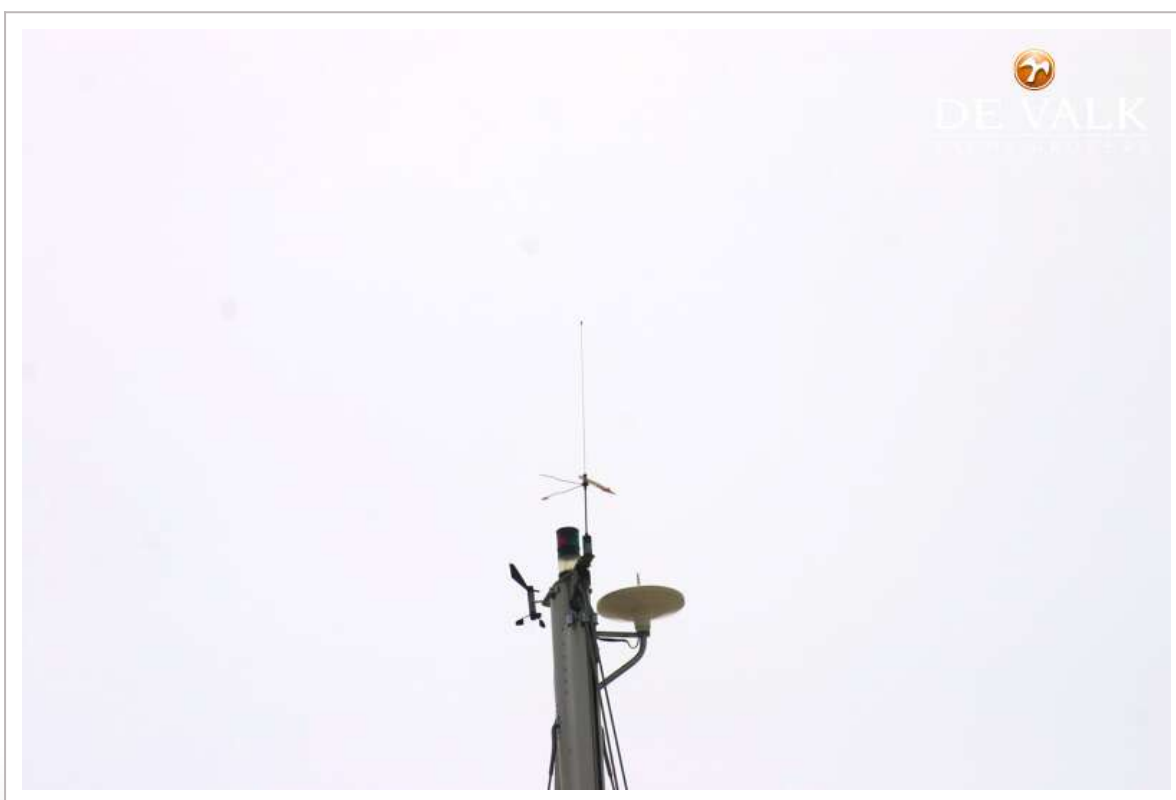


MOODY 376



MOODY 376





MOODY 376



MOODY 376



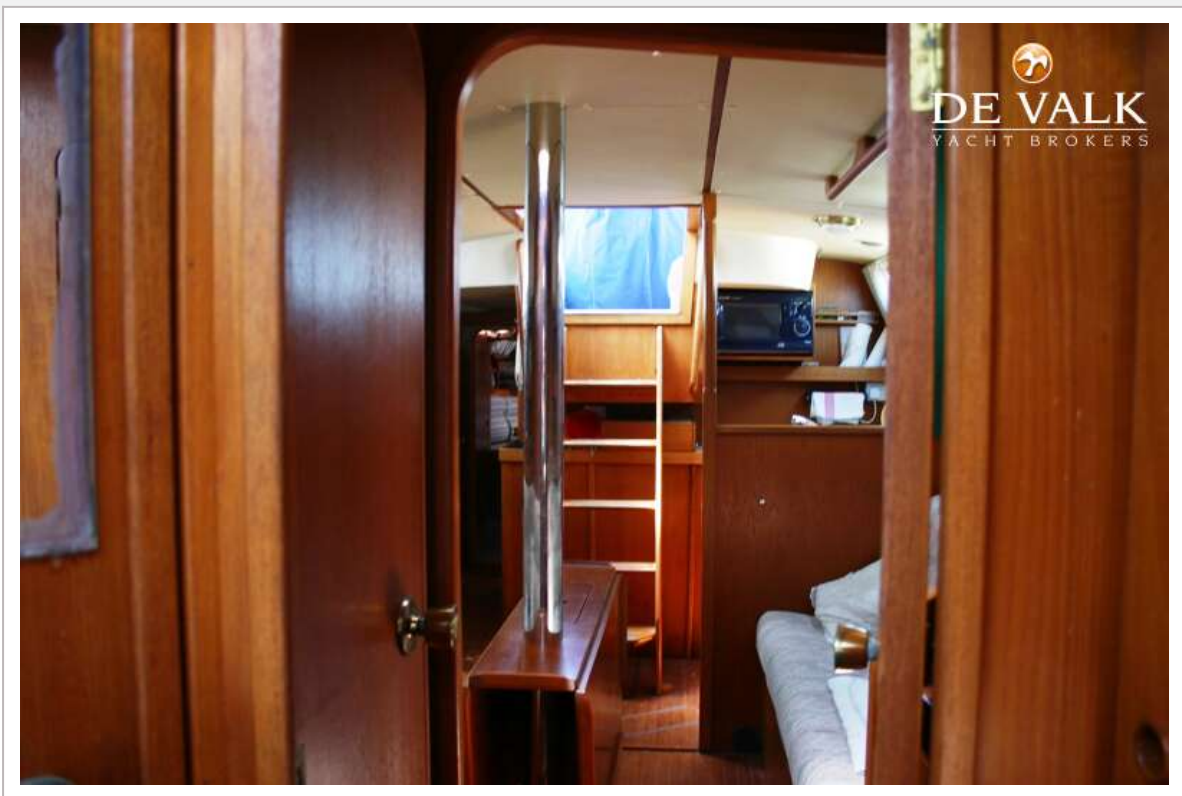
MOODY 376



MOODY 376



MOODY 376



MOODY 376



MOODY 376



MOODY 376

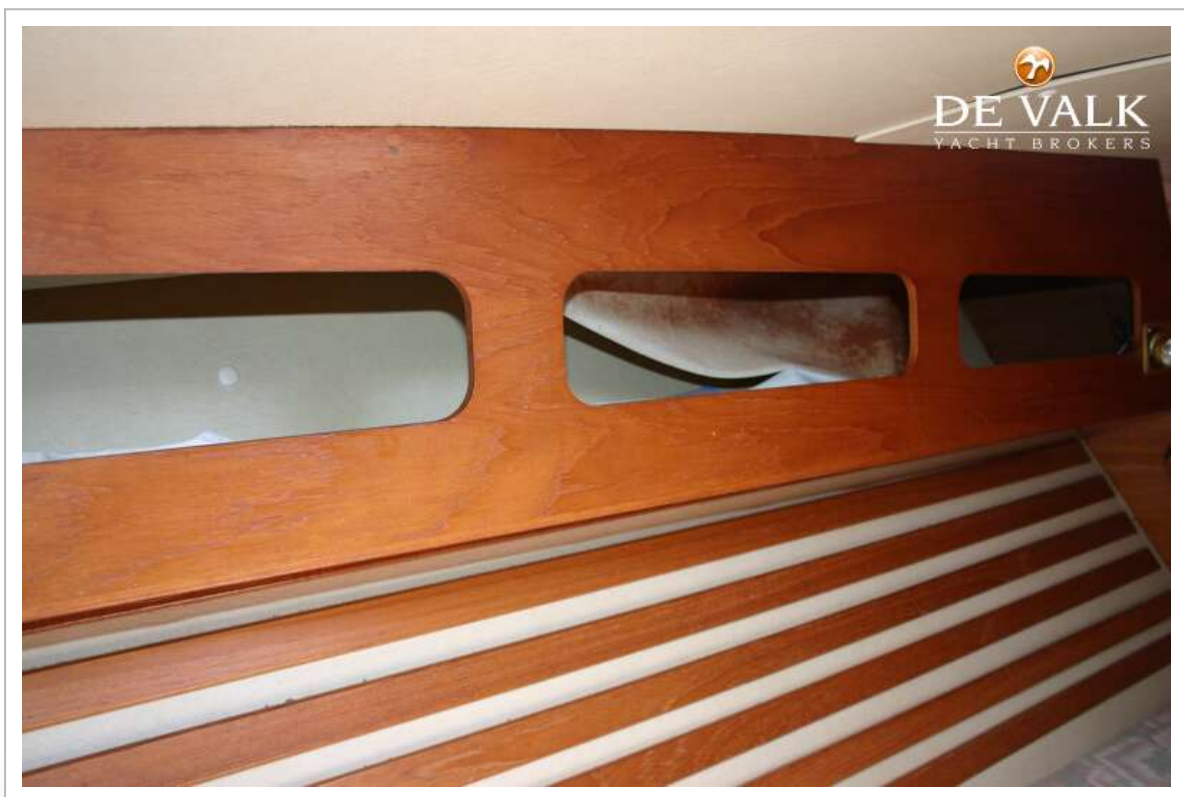


MOODY 376





MOODY 376



MOODY 376

