



## ALMKOTTER 1220 OK

# ALMKOTTER 1220 OK

## BROKER'S COMMENTS

This modern lined Almkotter 12.20 OK differentiates itself by a particularly good state of maintenance, this concerns both the painting and woodwork as well as the technical condition. The spacious cockpit with teak deck and outside helm station is located on the same deck as the tasteful teak finished salon. The Almkotter is featured with a Fisher Panda generator, Kabola central heating, electric bow thruster and teak deck in the cockpit.

*Arjen Hoeksma*

## SPECIFICATIONS

<b>Dimensions</b>	12.70 x 4.00 x 1.10 (m)	<b>Builder</b>	Jachtbouw De Alm - Werkendam
<b>Built</b>	2003	<b>Cabins</b>	2
<b>Material</b>	Steel	<b>Berths</b>	4
<b>Engine(s)</b>	1 x Perkins Sabre diesel	<b>Hp/Kw</b>	135.00 (hp), 99.22 (kw)
<b>Asking price</b>	sold (VAT )	<b>Lying</b>	at sales office

## CONTACT

<b>Sales office</b>	De Valk Loosdrecht B.V.	<b>Telephone</b>	+31 (0)35 582 90 30
<b>Address</b>	't Breukeleveense Meentje 6 1231LM Loosdrecht / Wijdmeren NL	<b>E-mail</b>	loosdrecht@devalk.nl

## DISCLAIMER

These particulars are given in good faith as supplied but cannot be guaranteed.



## GENERAL

Model	ALMKOTTER 1220 OK
Type	motor yacht
LOA (m)	12,70
Beam (m)	4,00
Draft (m)	1,10
Air draft (m)	2,95
Headroom (m)	2,00
Year built	2003
Builder	Jachtbouw De Alm - Werkendam
Country	The Netherlands
Displacement (t)	16
CE norm	C
Hull material	steel
Hull colour	black AWL-grip
Hull shape	hard chine
Superstructure material	steel
Rubbing strake	rubber
Deck material	steel
Deck finish	anti-slip paint
Cockpit deck finish	teak
Window frame	aluminium
Window material	glass
Deckhatch	yes
Portholes	yes
Mast can be lowered	manual
Fuel tank (litre)	1,500
Level indicator (fuel tank)	yes
Freshwater tank (litre)	900
Level indicator (freshwater)	yes
Blackwater tank (litre)	300



Level indicator (blackwater)	yes
Greywater tank (litre)	yes
Wheel steering	hydraulic
Outside helm position	hydraulic

## ACCOMMODATION

Cabins	2
Berths	4
Interior	teak
Open cockpit	yes
Aft deck	Teak
Saloon	Leather upholstery
Heating	central heating Kabola
Opening door to aft deck	yes
Galley	yes
Countertop	plastic
Sink	stainless steel
Cooker	calor gas 4 pits Gimeg
Extractor	yes
Gas alarm	Vetus
Microwave	yes
Fridge	with freezer compartment
Freezer	yes
Hot water system	Kabola
Water pressure system	electrical
Owners cabin	double bed
Wardrobe	hanging/drawers/shelves
Bathroom	shared
Toilet	shared
Toilet system	electric
Wash basin	at the toilet



Shower	shared
Guest cabin 1	double bed
Wardrobe	hanging and shelves
Washing machine	Candy ALCBI33T
Dryer	Candy ALCBI33T

## MACHINERY

No of engines	1
Make	Perkins
Type	Sabre
HP	135,00
kW	99,22
Fuel	diesel
Year installed	2003
Maximum speed (kn)	7,5
Cruising speed (kn)	6
Consumption (l/hr)	6
Engine hours	2730 (20-10-2015)
Engine cooling system	freshwater heat exchanger
Drive	shaft
Engine controls	bowden cable
Gearbox	hydraulic
Engine controls	bowden cable
Bowthruster	electric
Exhaust	watercooled
Propeller blades	4
Propeller shaft material	stainless steel
Shaft lubrication	water
Electric bilge pump	yes
Generator	Fischer Panda, 3.8kVa
Running hours generator	688 (24-10-2015)



Start battery	2x 225A
Service battery	4x 225A tractie
Battery monitor	Mastervolt
Inverter	Mastervolt 2,500W
Shorepower	with cable

## NAVIGATION

Depth sounder	Simrad IS15
Repeater	yes
VHF	Shipmate RS8300
Radar/GPS/plotter	Shipmate cp32

## EQUIPMENT

Cockpit cover	yes
Boarding ladder	stainless steel
Transom door	yes
Anchor	Vetus
Anchor chain	RVS
Anchor chain	30
Windlass	electrical
Deck wash	yes
Sea railing	stainless steel
Grab rail (superstructure)	stainless steel
Railing side opening gates	yes
Wiper	4x
Horn	electric
TV	Samsung
TV receiver	Satellite
Radio-cd player	Pioneer
DVD player	yes
Speakers in salon	yes



Fire extinguisher

4x engine room



# ALMKOTTER 1220 OK





# ALMKOTTER 1220 OK



# ALMKOTTER 1220 OK



# ALMKOTTER 1220 OK





# ALMKOTTER 1220 OK



# ALMKOTTER 1220 OK



# ALMKOTTER 1220 OK





# ALMKOTTER 1220 OK

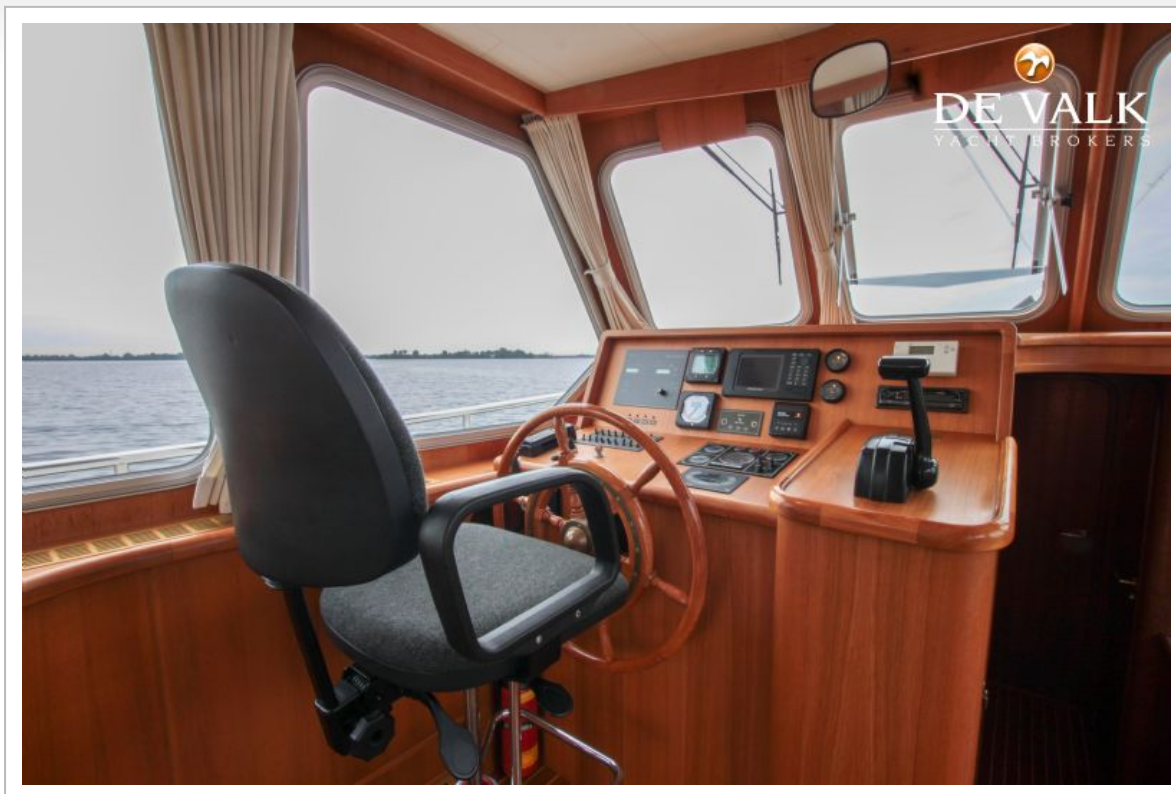


# ALMKOTTER 1220 OK

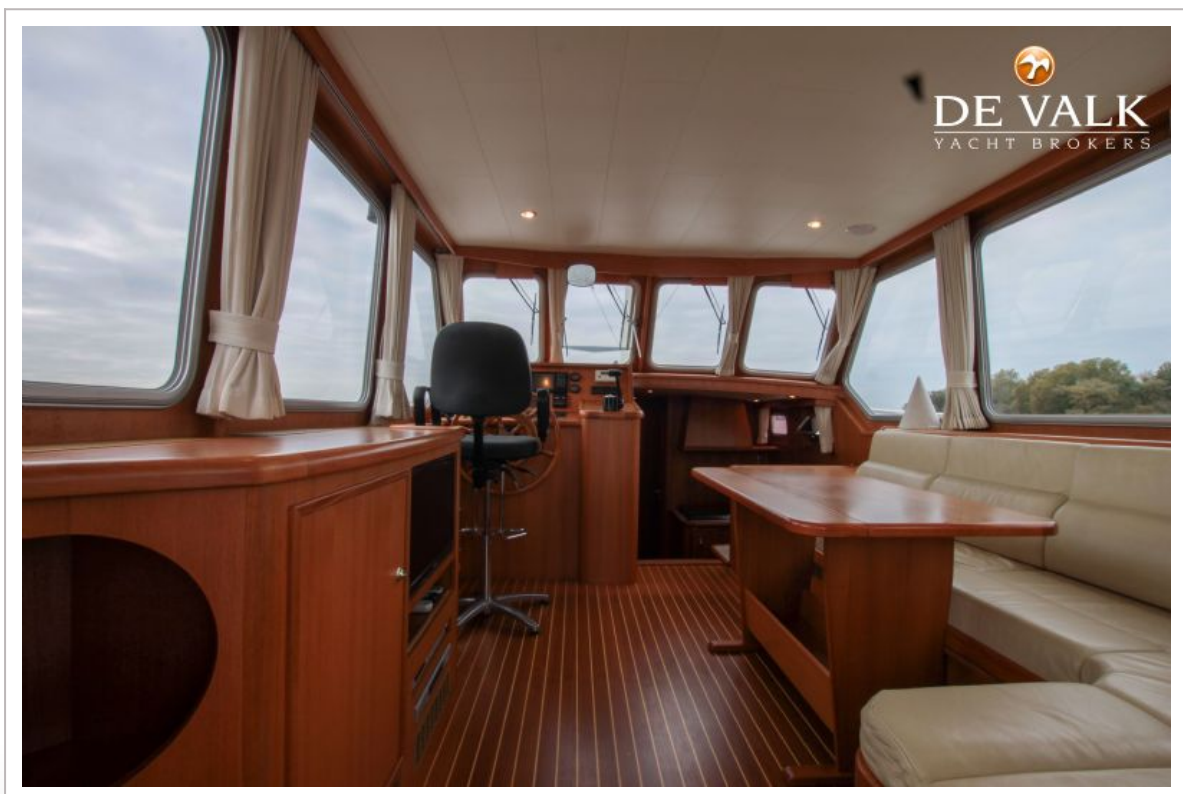




# ALMKOTTER 1220 OK

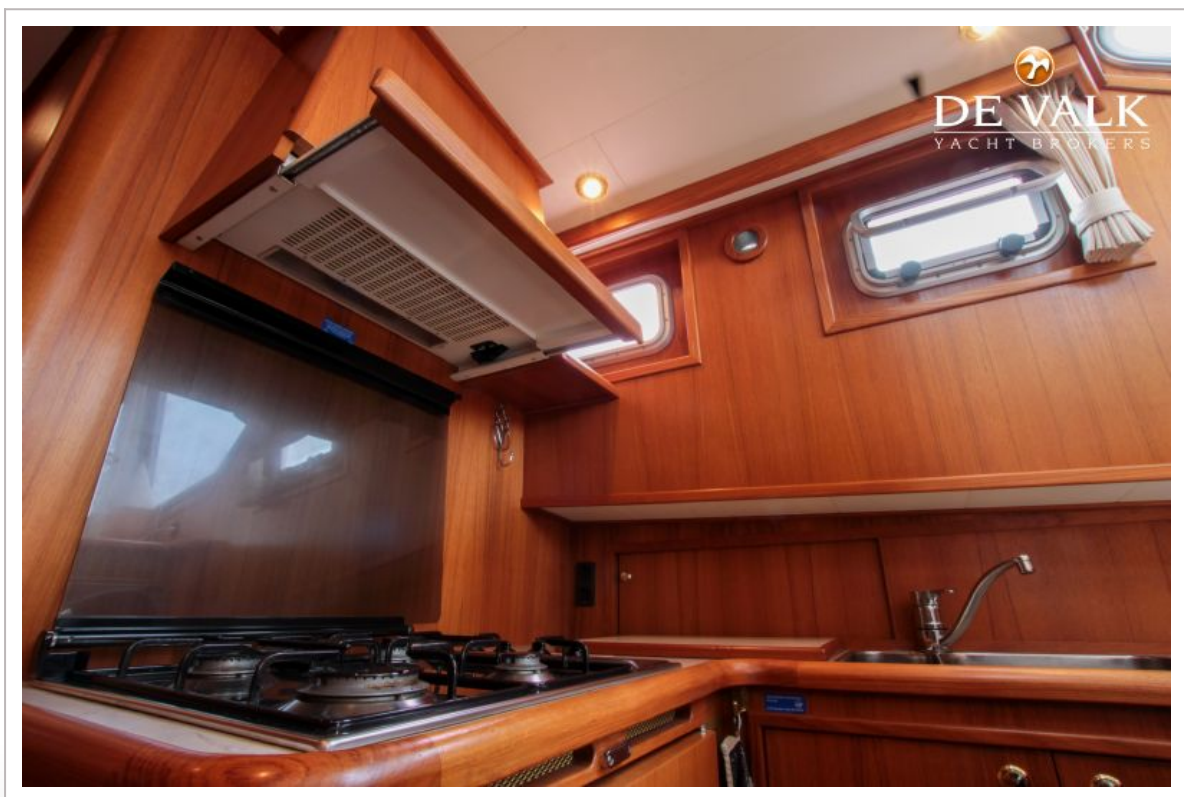


# ALMKOTTER 1220 OK

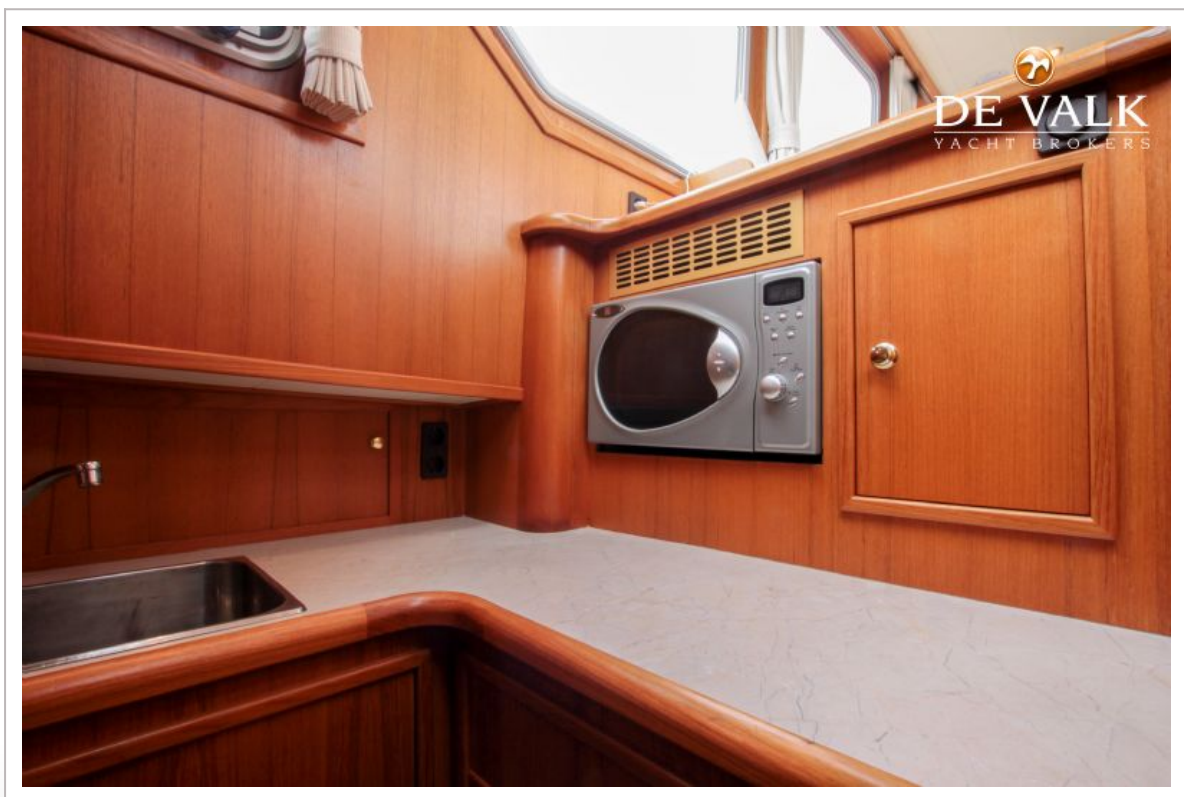
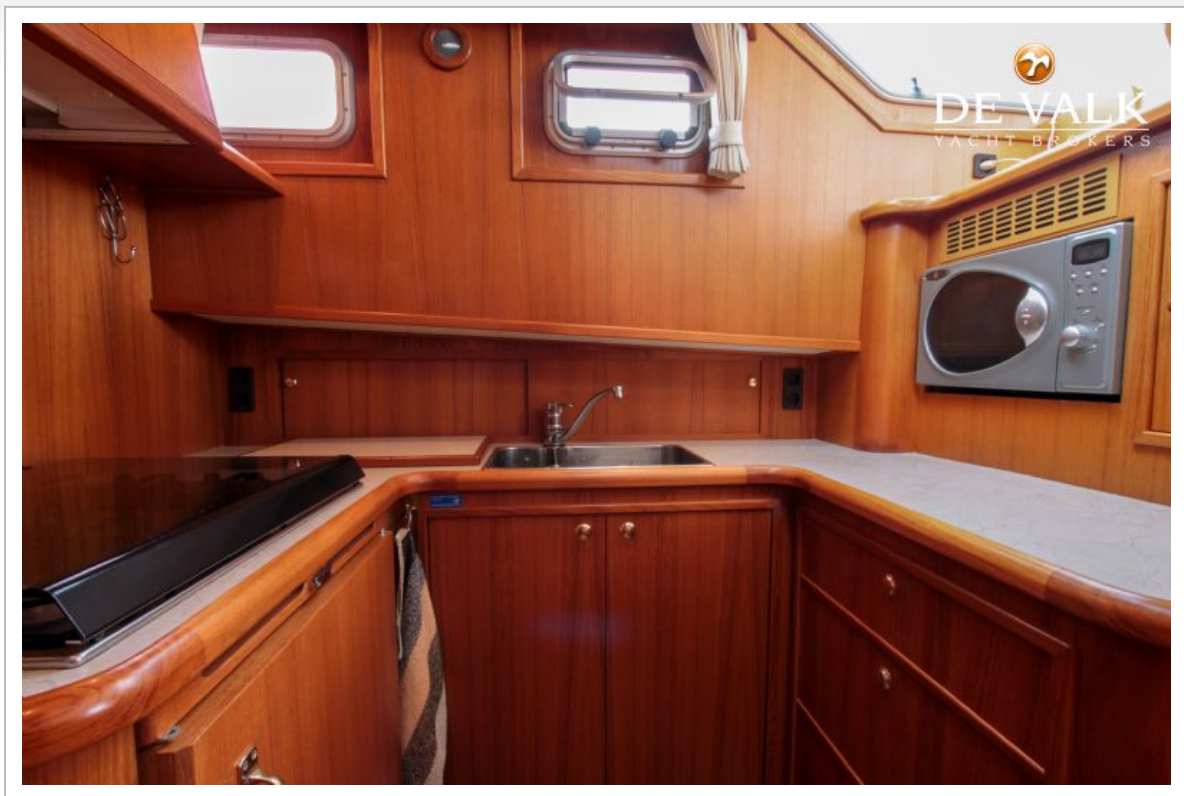




# ALMKOTTER 1220 OK

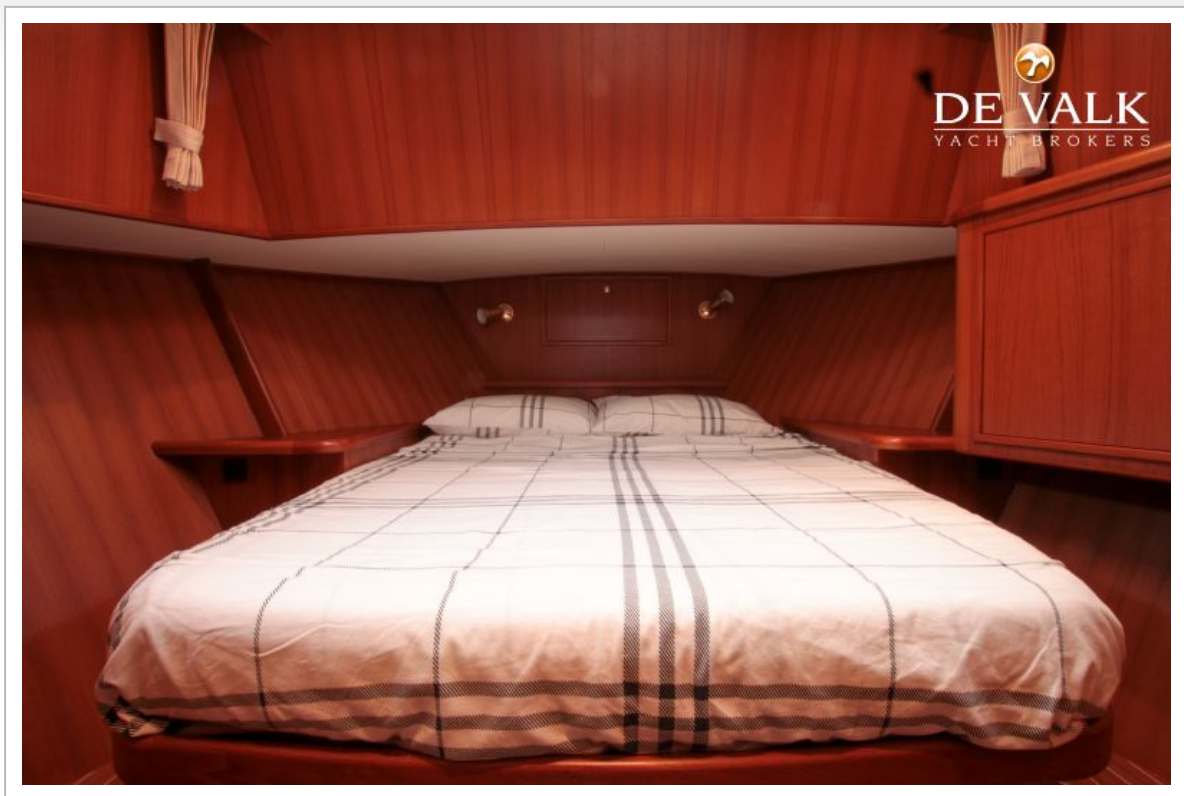


# ALMKOTTER 1220 OK

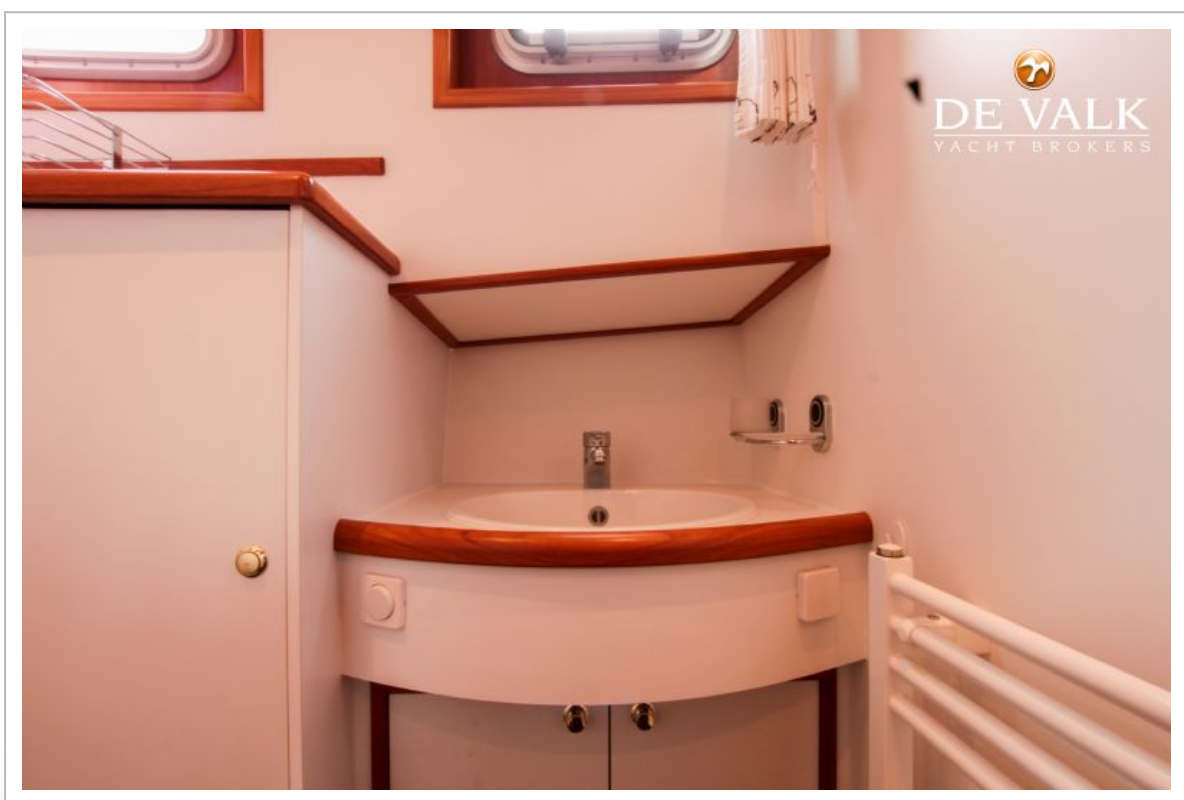
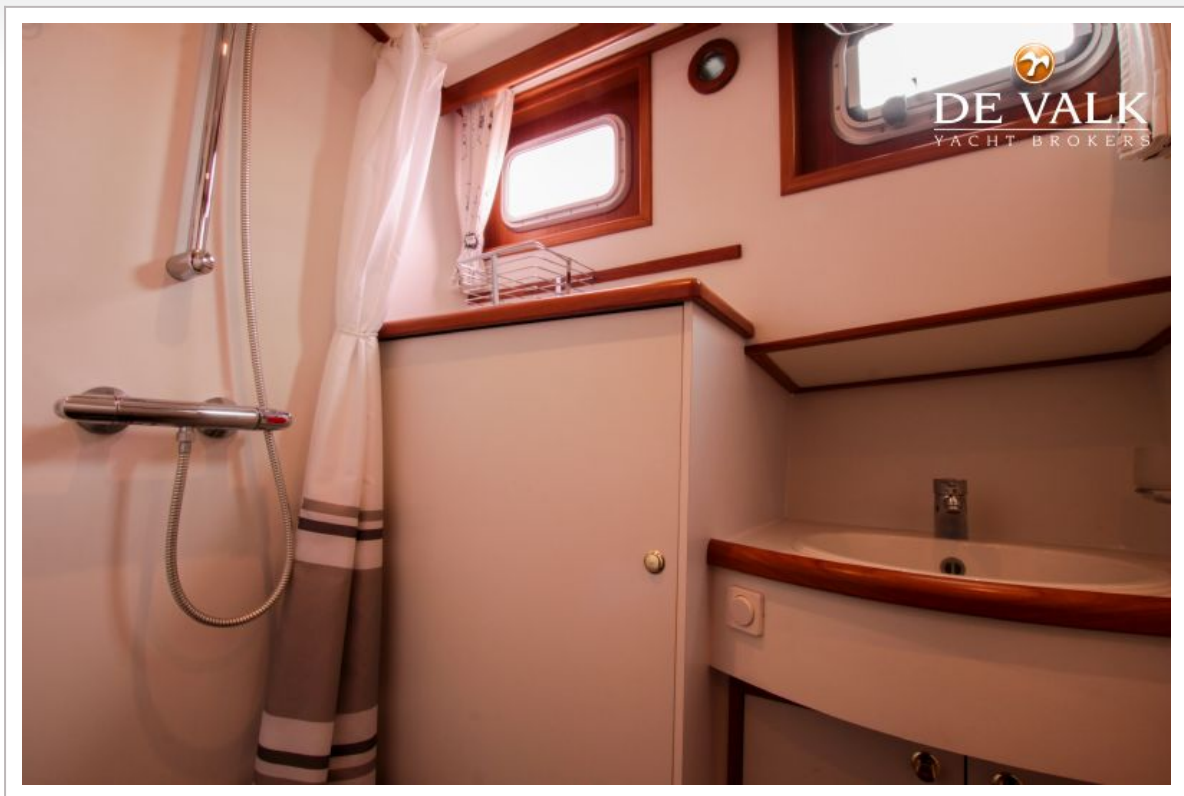




# ALMKOTTER 1220 OK



# ALMKOTTER 1220 OK

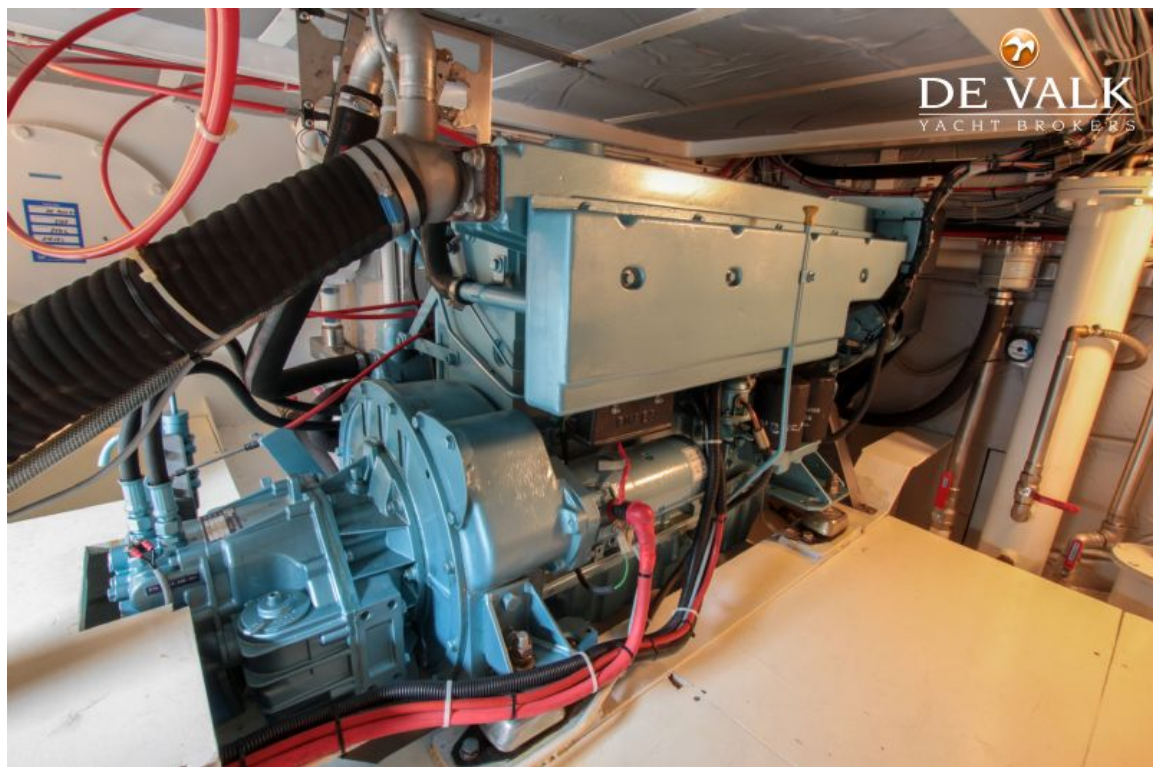
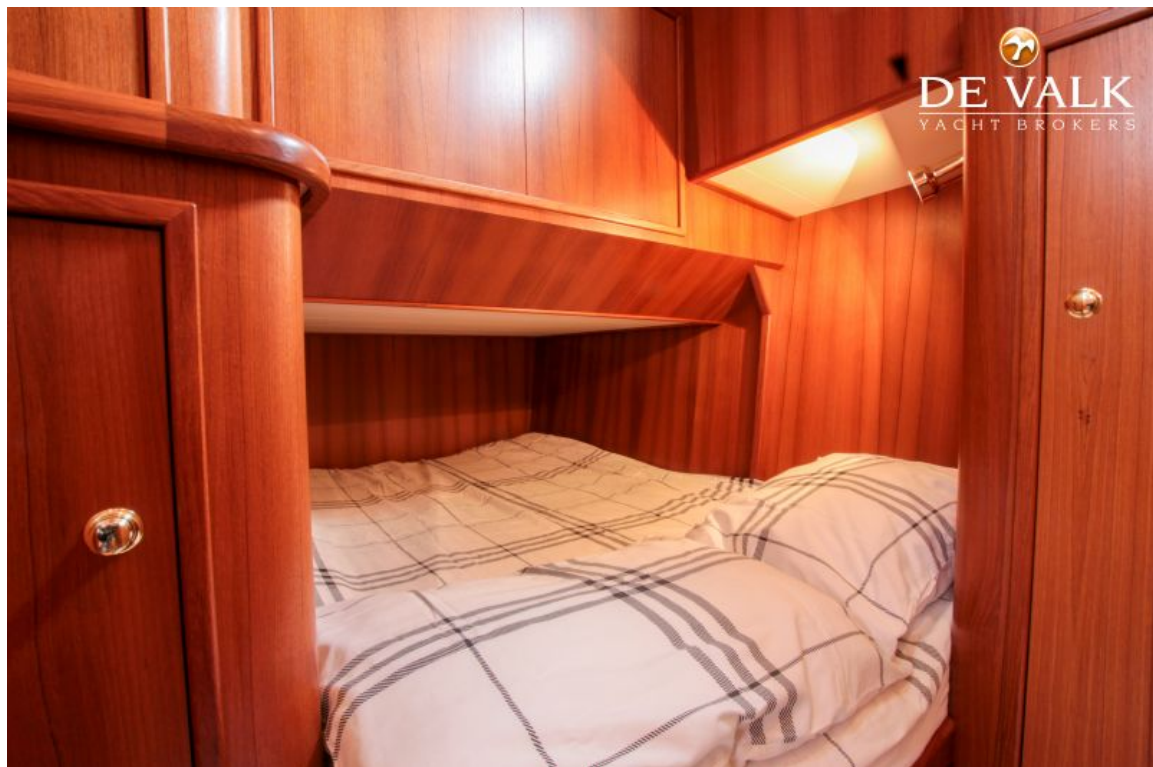


# ALMKOTTER 1220 OK





# ALMKOTTER 1220 OK





# ALMKOTTER 1220 OK

