



DE VALK
YACHT BROKERS



CLASSIC KETCH 45'



DE VALK
YACHT BROKERS

CLASSIC KETCH 45'

BROKER'S COMMENTS

Saracen, wooden catch built 1967 in Split, Croatia, designed by Sieb van der Meer, was one of the few yachts in Adriatic privately manufactured and owned. Hosted Orson Welles on his historic journey together with many years of enjoying on Croatian sun. Still alive and well maintained in the hands of Naval Professor on the Split University.

Darko Tomasic

SPECIFICATIONS

Dimensions	13.56 x 3.56 x 1.80 (m)	Builder	Y.C.LABUD SPLIT
Built	1967	Cabins	2
Material	Wood	Berths	8
Engine(s)	1 x RAKOVICA PERKINS IMR diesel	Hp/Kw	69.00 (hp), 50.72 (kw)
Asking price	sold (VAT)	Lying	elsewhere / Not at sales office

CONTACT

Sales office	De Valk Istria	Telephone	+386 (1) 600 2704
Address	(Marina Izola) Dantejeva Ulica 22 6310 Izola SI	E-mail	istria@devalk.nl

DISCLAIMER

These particulars are given in good faith as supplied but cannot be guaranteed.



CLASSIC KETCH 45'

GENERAL

Model	CLASSIC KETCH 45'
Type	sailing yacht
LOA (m)	13,56
Beam (m)	3,56
Draft (m)	1,80
Year built	1967
Launched	1967
Builder	Y.C.LABUD SPLIT
Country	Croatia
Designer	S. M. v. d. Meer
Displacement (t)	14
Ballast (tonnes)	lead 4
CE norm	NA
Hull material	wood
Hull colour	white
Hull shape	S-bilged
Superstructure material	wood
Deck material	teak
Deck finish	cork ACM 49 AMORIM
Deckhatch	yes
Portholes	yes
Fuel tank (litre)	250
Freshwater tank (litre)	800
Blackwater tank (litre)	No

ACCOMMODATION

Cabins	2
Berths	8
Interior	mahogany
Floor	woodprint



CLASSIC KETCH 45'

Doghouse	yes
Saloon	yes
Aft Cabin	yes
Galley	yes
Countertop	wood
Sink	stainless steel
Cooker	calor gas
Oven	yes
Fridge	yes
Hot water system	220V + engine
Owners cabin	twin single Aft
Wardrobe	hanging and shelves
Toilet	yes

MACHINERY

No of engines	1
Make	RAKOVICA PERKINS
Type	IMR
HP	69
kW	50.72
Fuel	diesel
Year installed	1977
Year of overhaul	2019
Maximum speed (kn)	9
Cruising speed (kn)	6
Consumption (l/hr)	4,5
Engine cooling system	seawater
Drive	shaft
Engine controls	yes
Gearbox	mechanical
Propeller type	fixed



CLASSIC KETCH 45'

Propeller blades	3
Manual bilge pump	yes
Electrical installation	yes
Batteries	yes
Start battery	110Ah
Service battery	300 Ah
Shorepower	with cable
Extra info	12V AC TO 220 DC Motor Generator

NAVIGATION

Depth sounder	Autohelm
VHF	Raytheon RAY 98E
GPS	Garmin 128

EQUIPMENT

Fixed windscreen	yes
Cockpit cover	yes
Sun awning	yes
Winter cover	yes
Cockpit table	yes
Gangway	yes
Anchor	Brittany
Anchor chain	yes
Windlass	yes
Capstan	yes
Sea railing	wire
Grab rail (superstructure)	wood
Pushpit	yes
Pulpit	yes
Lifejackets	yes
Safety harness	yes



CLASSIC KETCH 45'

Horn	yes
Binocular	yes
Radar reflector	yes
Fenders	yes
Mooring lines	yes
Radio	yes

RIGGING

Rigging	ketch
Standing rigging	wire
Material mast	aluminium
Mainsail	Elvstrom 32 m2
Mainsail cover	yes
Cutterstay	yes
Mizzen	Elvstrom 12 m2
Jib	Elvstrom 22 m2
Genoa	32m2
Genoa furler	yes
Cutter furler	yes
Spinnaker	120 m2
Reefing System	slabreefing
Boomvang	yes
Primary sheet winch	Lewmar ST
Secondary sheet winch	Lewmar
Halyard winches	yes
Reefing winch	yes
Spi-pole	aluminium



CLASSIC KETCH 45'



CLASSIC KETCH 45'



CLASSIC KETCH 45'



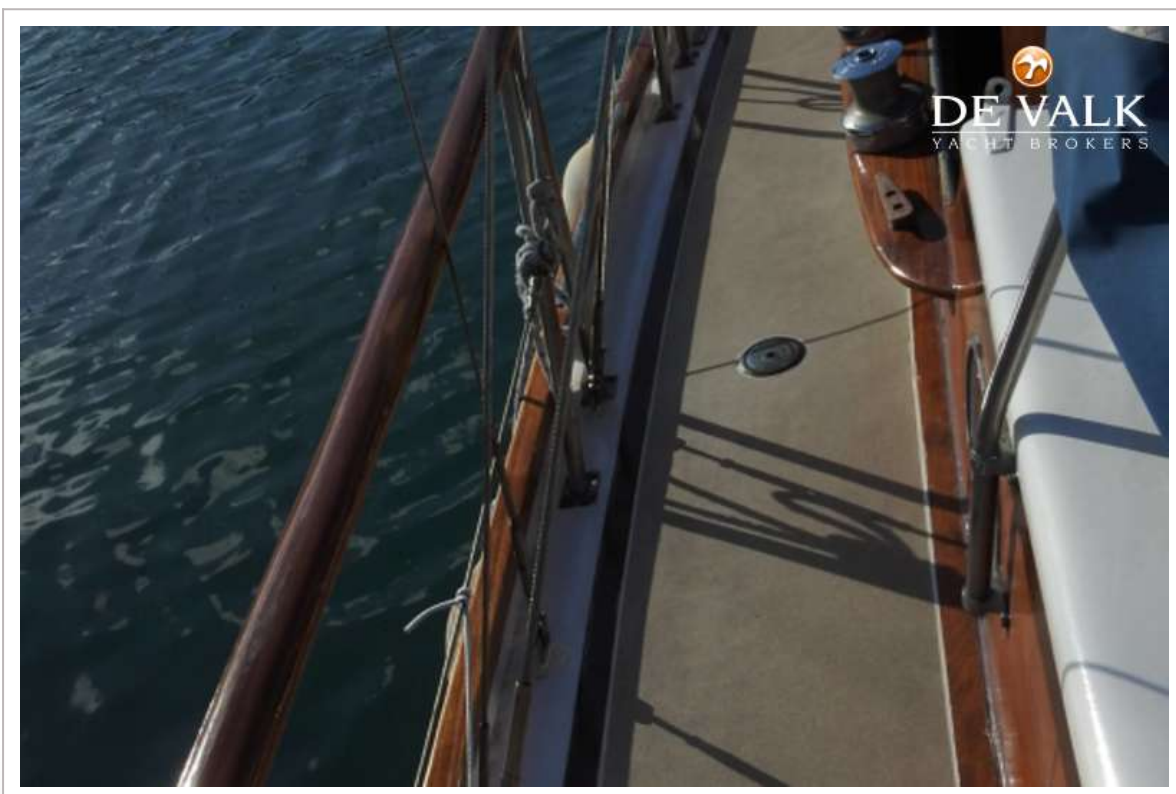
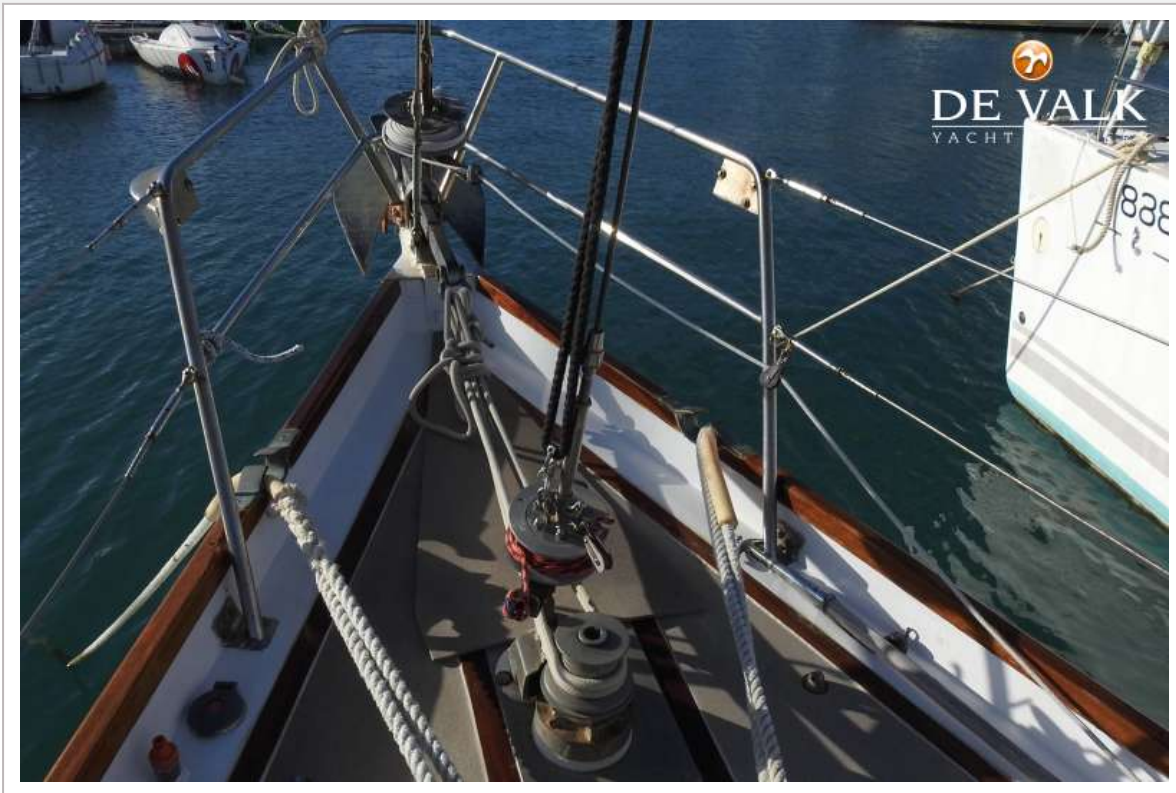
CLASSIC KETCH 45'



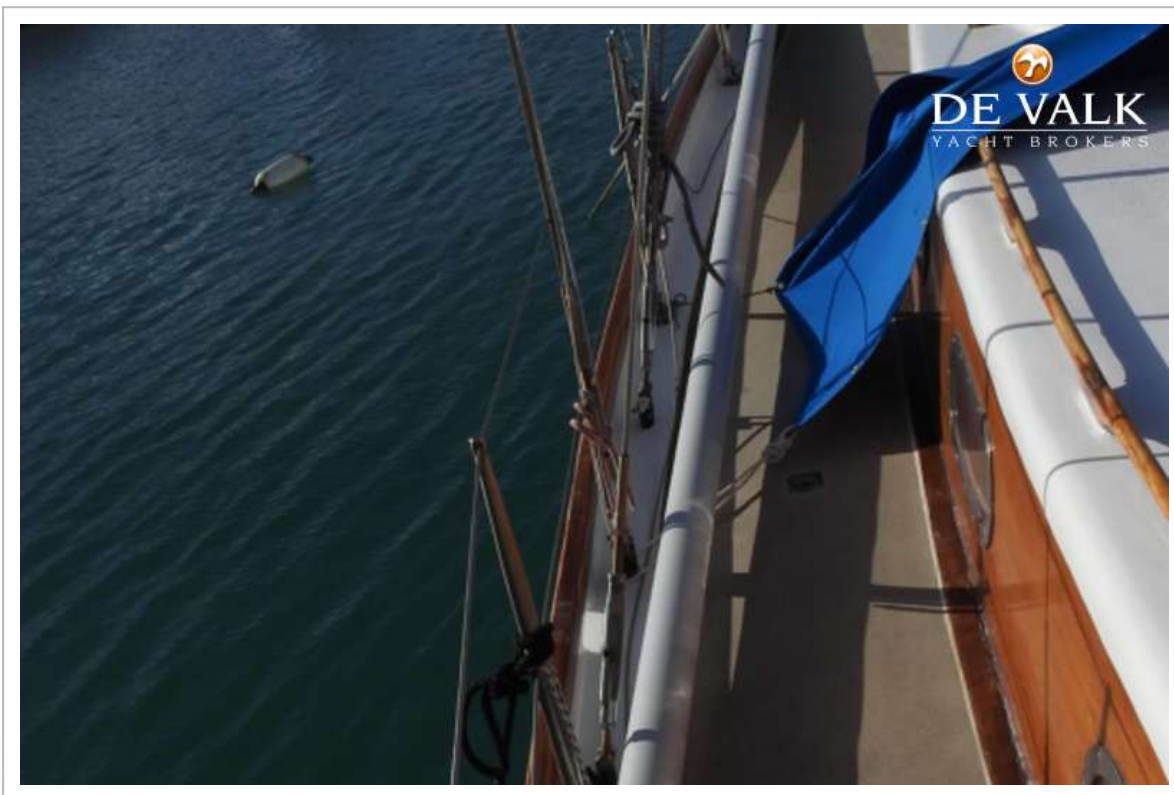
CLASSIC KETCH 45'



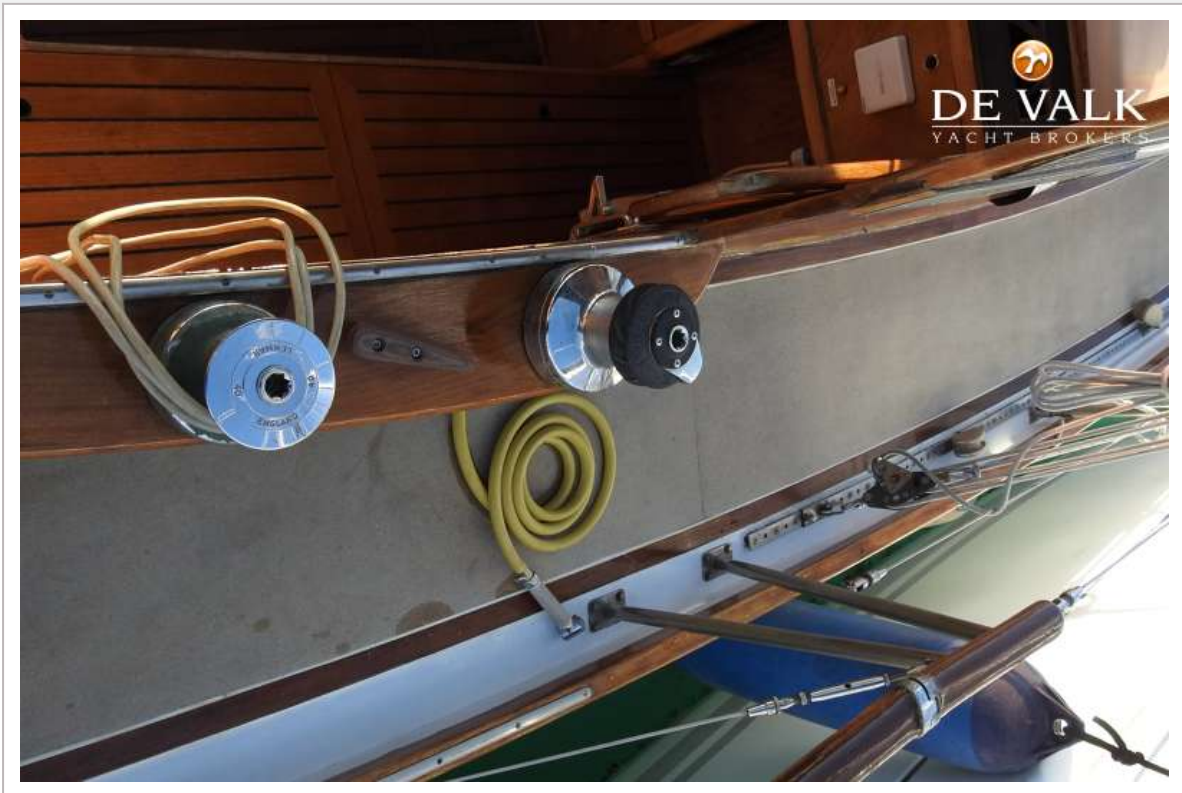
CLASSIC KETCH 45'



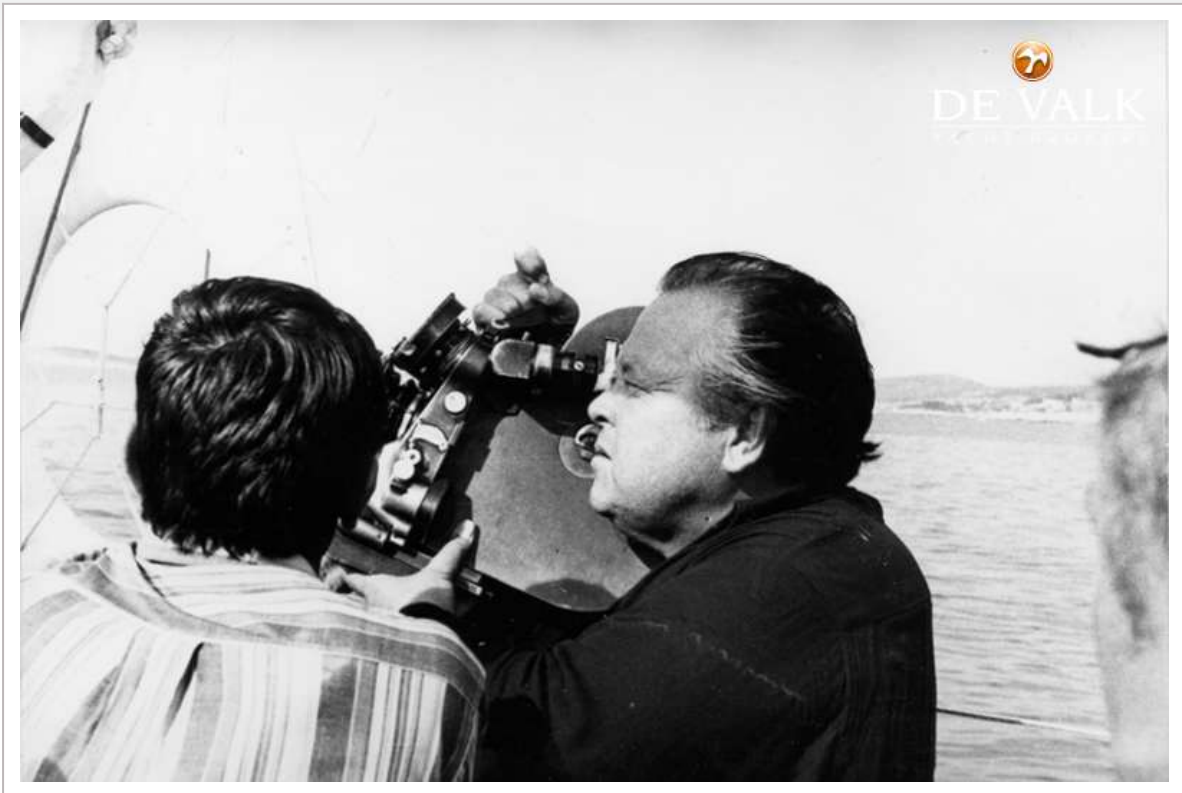
CLASSIC KETCH 45'



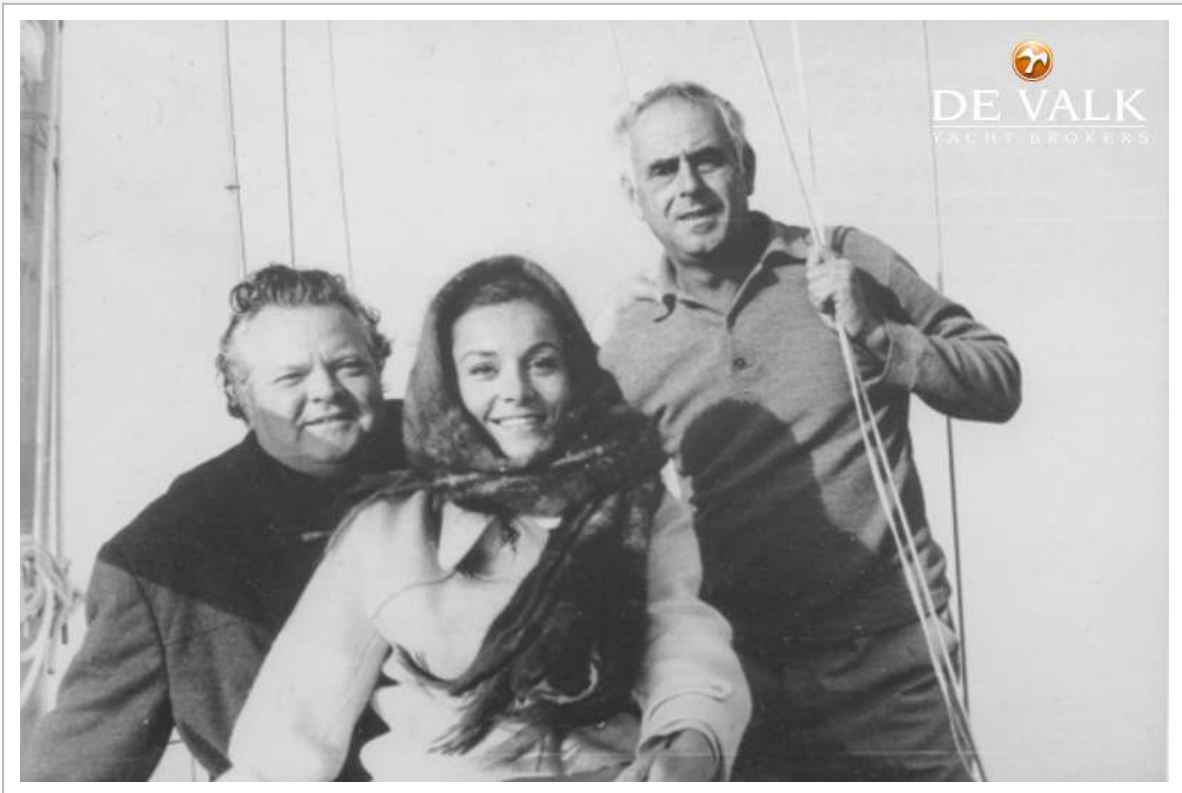
CLASSIC KETCH 45'



CLASSIC KETCH 45'



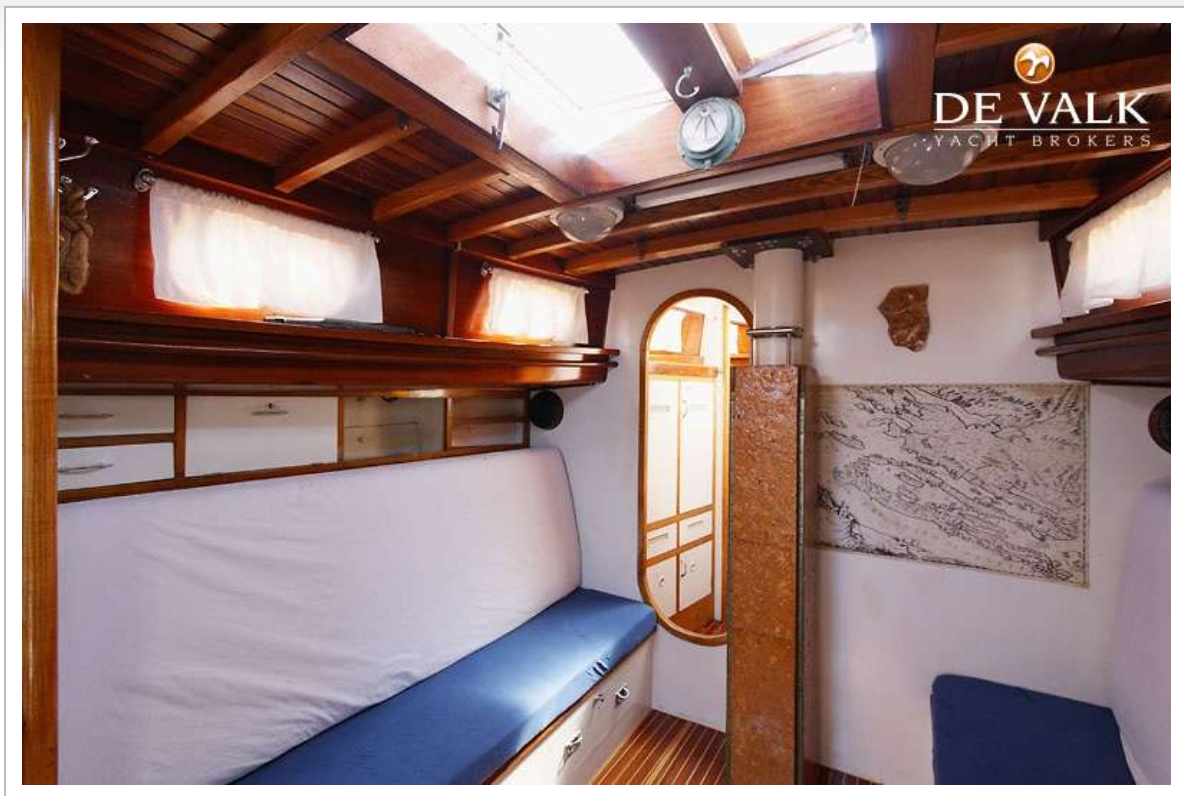
CLASSIC KETCH 45'



CLASSIC KETCH 45'



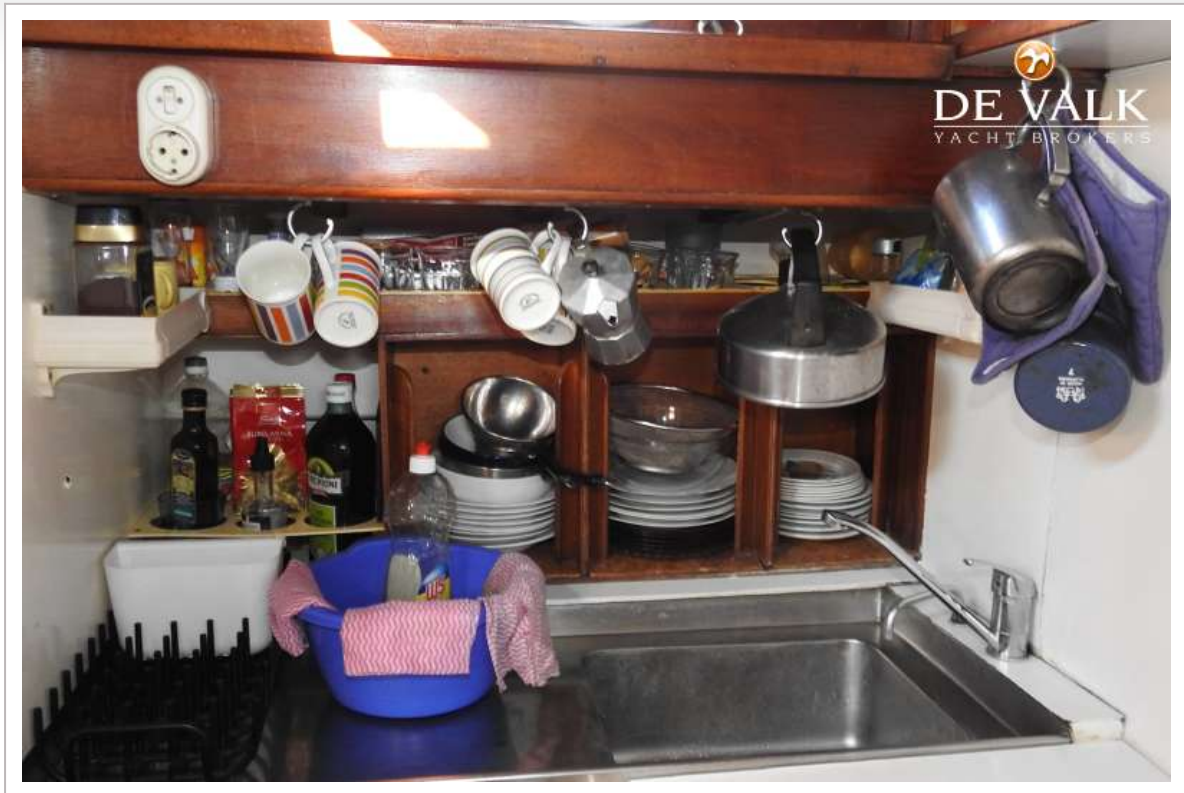
CLASSIC KETCH 45'



CLASSIC KETCH 45'



CLASSIC KETCH 45'



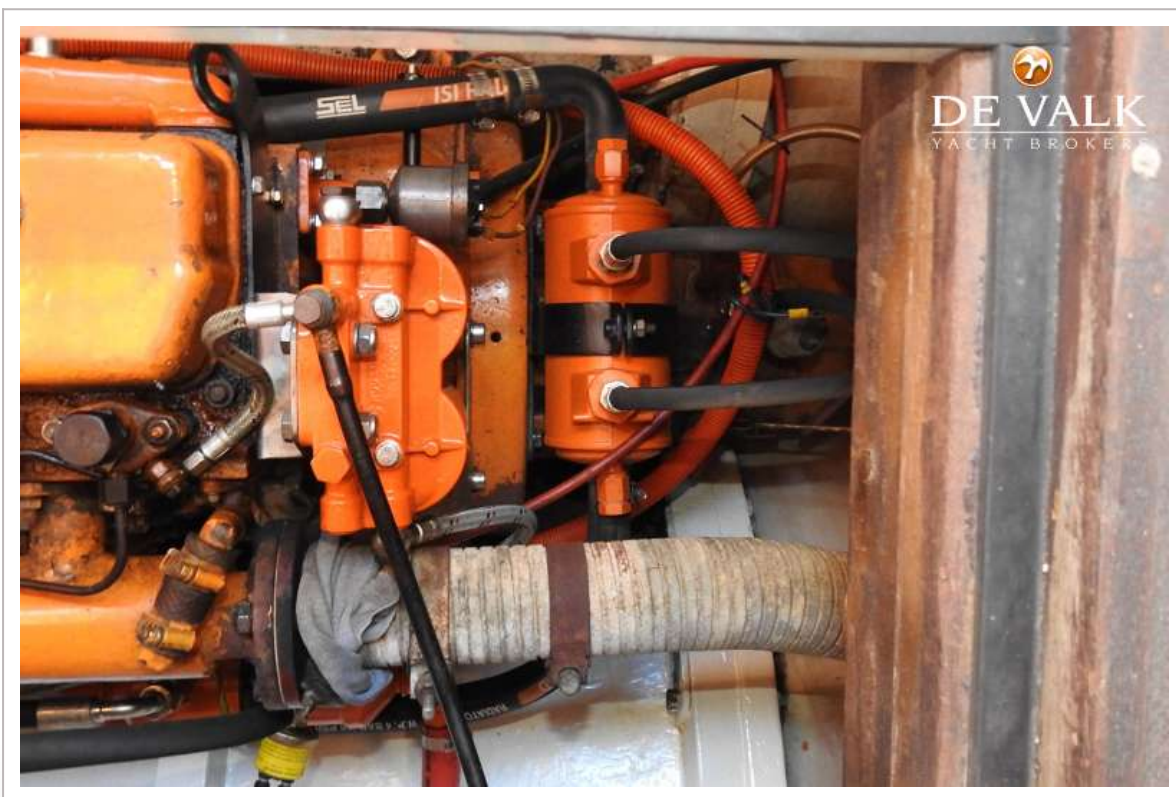
CLASSIC KETCH 45'



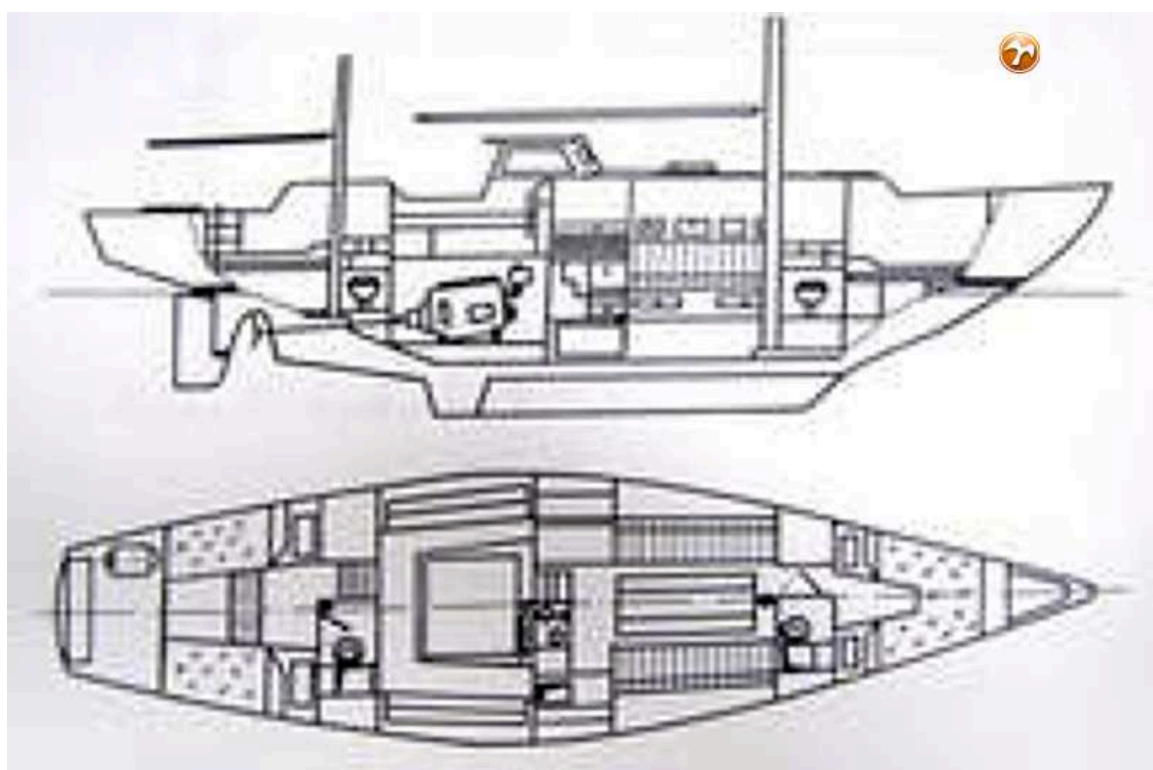
CLASSIC KETCH 45'




CLASSIC KETCH 45'

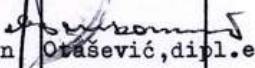


CLASSIC KETCH 45'



zeleznicom

NA OSNOVU VASE PORUDZBINE _____ POSLAJI SMO PO NASOJ OTPREMNICI NIZE NAVEDEN  BU.
PLATIVO U ROKU OD _____ DANA PO PRIJEMU ROBE.

IDENT. BROJ	N A Z I V	JM	KOLICINA	PRODAJNA CENA / JM	IZNOS
850414	Remontovan motor IM-036/T bez zamene				
Br. motora	Br. pumpe	Br. serv.knji.			
Ro293	04-001 10173	"	1	30.000,00	30.000,00
	Postolje motora	kom	1		150,00
	Ambalaža-sanduk	"	1		1.000,00
				UKUPNO DINARA	31.150,00
Slovima: tridesetjedan hiljad sto pedeset dinara					
Plaćeno na blagajni IMR-a 3.9.76.god					
INDUSTRIJA MOTORA,					
/Milutin  Otasević, dipl.ecc./					

