



DE VALK
YACHT BROKERS



C & L TRAWLER 44



DE VALK
YACHT BROKERS

C & L TRAWLER 44

BROKER'S COMMENTS

C&Lt is an outstanding example of Classic Northwest Trawlers. The C & L's are built with quality workmanship compared to other builders of her time. Taiwan boats generally have stout hulls. Properly maintained, the Ford diesel engines are reliable and long-lived., C & L Trawler 44 will be auctioned on 10.07.2019 in cooperation with YachtBid and BVA Auctions. For further details & viewing days go to: http://bit.ly/Auction_Trawler44 Starting price of the auction EUR. 20,000 (VAT exempt), offers can be made from 26.06.2019 on the website of BVA Auctions.

Sofia Iliia-Salvanou

SPECIFICATIONS

Dimensions	13.32 x 4.32 x 2.13 (m)	Builder	C&L MARINE CORP. TAIWAN
Built	1978	Cabins	3
Material	GRP	Berths	9
Engine(s)	2 x FORD MERMAIDE MAJEST diesel	Hp/Kw	2 x 243.00 (hp), 178.61 (kw)
Asking price	sold (VAT)	Lying	at sales office

CONTACT

Sales office	De Valk Corfu	Telephone	(+30) 6948681503
Address	New Port of Corfu, near Gouvia Marina 490 83 Corfu GR	E-mail	corfu@devalk.nl

DISCLAIMER

These particulars are given in good faith as supplied but cannot be guaranteed.



GENERAL

Model	C & L TRAWLER 44
Type	motor yacht
LOA (m)	13,32
Beam (m)	4,32
Draft (m)	2,13
Year built	1978
Builder	C&L MARINE CORP. TAIWAN
Country	Taiwan
Gross tonnage	24,42
CE norm	NA
Hull material	GRP
Hull colour	off-white
Hull shape	deep-V
Keel type	
Superstructure material	GRP
Deck material	teak
Antifouling (year)	2019
Window frame	wood 2019 varnished
Window material	glass
Deckhatch	yes
Portholes	brass
Flybridge	yes
Flybridge cover	yes
Flybridge cockpit cover	yes
Flybridge suncover	yes
Mast can be lowered	manual
Fuel tank (litre)	steel 2000 Lt
Freshwater tank (litre)	polyethylene 800 Lt INSTALLED 2010
Blackwater tank (litre)	yes
Level indicator (blackwater)	yes



Blackwater tank extraction	pump And macerator
Wheel steering	yes
Inside helm position	yes
Flybridge helm position	yes

ACCOMMODATION

Cabins	3
Berths	9
Interior	Wood
Floor	parquet 2nd owner put new parquet floor
Aft deck	yes
Deck saloon	Flybridge 3 seats & 1 small sofa.
Pilot house/deck saloon	Deck table plus 4 chairs
Saloon	New: June 2018 convertible to one Berth
Air-conditioning	CLIMA
Dining room	Kitchen & dining room is one separate cabin
Dinette	yes
Dinette to convert into berth	Convertible to Double bed
Sliding door to cockpit	2019 varnished
Opening door to cockpit	2019 varnished
Opening door to aft deck	2019 varnished
Galley	2nd owner renovated
Countertop	yes
Sink	stainless steel
Cooker	electric
Oven	yes
Microwave	yes
Fridge	yes
Freezer	yes
Hot water system	yes
Water pressure system	yes



C & L TRAWLER 44

Kettle	yes
Crockery	yes
Owners cabin	double bed
Wardrobe	hanging/drawers/shelves
Bathroom	en suite
Toilet	en suite
Wash basin	in the bathroom
Shower	en suite
Bath tub	en suite
Guest cabin 1	v-bed
Wardrobe	hanging and shelves
Bathroom	shared
Toilet	shared
Wash basin	in the bathroom
Shower	shared
Guest cabin 2	twin single
Wardrobe	hanging/drawers/shelves
Bathroom	shared
Toilet	shared
Wash basin	in the bathroom
Shower	shared
Central vacuum cleaner	yes
Flybridge	yes
Extra info	Barbeque stainless steel for use on forward deck

MACHINERY

No of engines	2
Make	FORD
Type	MERMAIDE MAJEST
HP	243,00
kW	178,61



C & L TRAWLER 44

Fuel	diesel
Maximum speed (kn)	9,5
Cruising speed (kn)	7,5
Consumption (l/hr)	13Lt/h on 1500 r/m
Engine hours	1068
Engine cooling system	yes
Drive	shaft
Shaft seal	yes
Gearbox	yes
Bowthruster	VETUS
Gearbox	hydraulic
Exhaust	yes
Propeller type	fixed
Propeller blades	4 blade props & Drive shafts with rope cutters
Propeller shaft material	steel
Manual bilge pump	yes
Electric bilge pump	yes
Bilge alarm	yes
Electrical installation	yes
Generator	Westerbeke 8 Kw
Batteries	2017
Start battery	yes
Service battery	yes
Generator battery	yes
Bowthruster battery	yes
Battery monitor	ADVERC DCM Mk III
Battery charger	STERLING 4 step batterie charger
Inverter	yes
Shorepower	with cable
Trimtabs	yes
Extra info	Range 1800 Nm
Extra info	2019 Engine & gear full service



Extra info yes

NAVIGATION

Compass	yes
Compass on flybridge	2018 New
Depth sounder	yes
Log	yes
Fish finder	yes
VHF	yes
Autopilot	yes
Radar	Raymarine radar scanner on masthead 40 miles range
Plotter/GPS	Raymarine RL70C in wheel house and RL 125 on fly bridge
Weather receiver	yes
Navigation lights	yes

EQUIPMENT

Fixed windscreen	yes
Sprayhood	yes
Bimini	yes
Winter cover	yes
Window cover	yes
Cockpit cushions	yes
Cockpit table	yes
Cockpit chairs	yes
Bathing platform	yes
Boarding ladder	stainless steel
Transom door	yes
Gangway	yes
Deck shower	yes
Anchor	Delta 25 Kg
Anchor chain	50 m



Anchor 2	Heavy
Anchor chain	30 m
Dinghy	New A P Marine 2,5 m
Outboard	Mercury 4 Hp
Davits	stainless steel
Deck crane	yes
Grab rail (superstructure)	wood
Railing side opening gates	yes
Life raft	PLASTIMO
Life raft (pers)	6 persons
Last life raft survey	2017
Lifejackets	4 persons, 3 automatic inflation
Lifebuoy	yes
Horn	fog horn
Radar reflector	yes
Fenders	yes
Mooring lines	yes
Tools	Electric drills, spanners, socket sets
Fire extinguisher	yes
Extra info	3rd Anchor ,50m rope
Extra info	2019 Antifouling, hull polishing, hand rail ext. doors varnishe
Extra info	2019 Exterior window frames varnished.





**This yacht will be auctioned,
for further details please visit www.devalk.nl**

**Dit schip zal worden geveild,
voor meer informatie gaat u naar www.devalk.nl**

**Dieses Schiff wird versteigert,
für weitere informationen besuchen Sie www.devalk.nl**

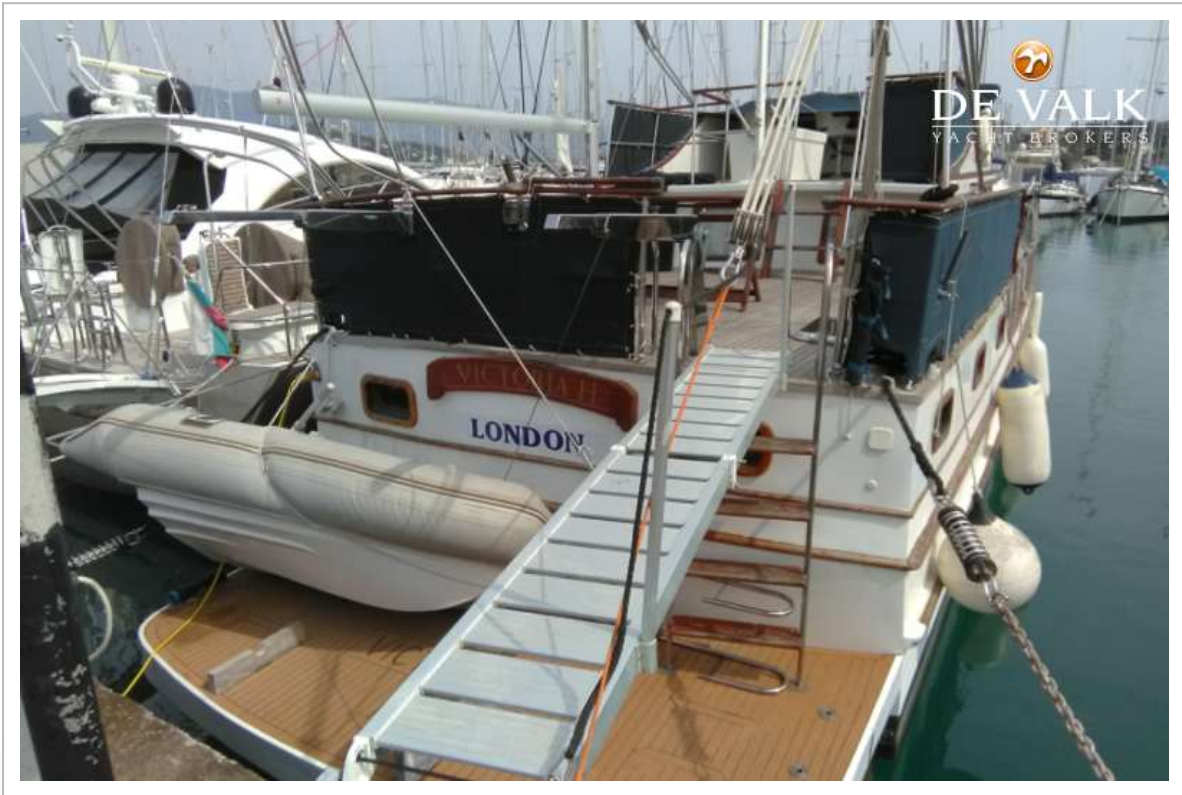
WWW.DEVALK.NL



C & L TRAWLER 44



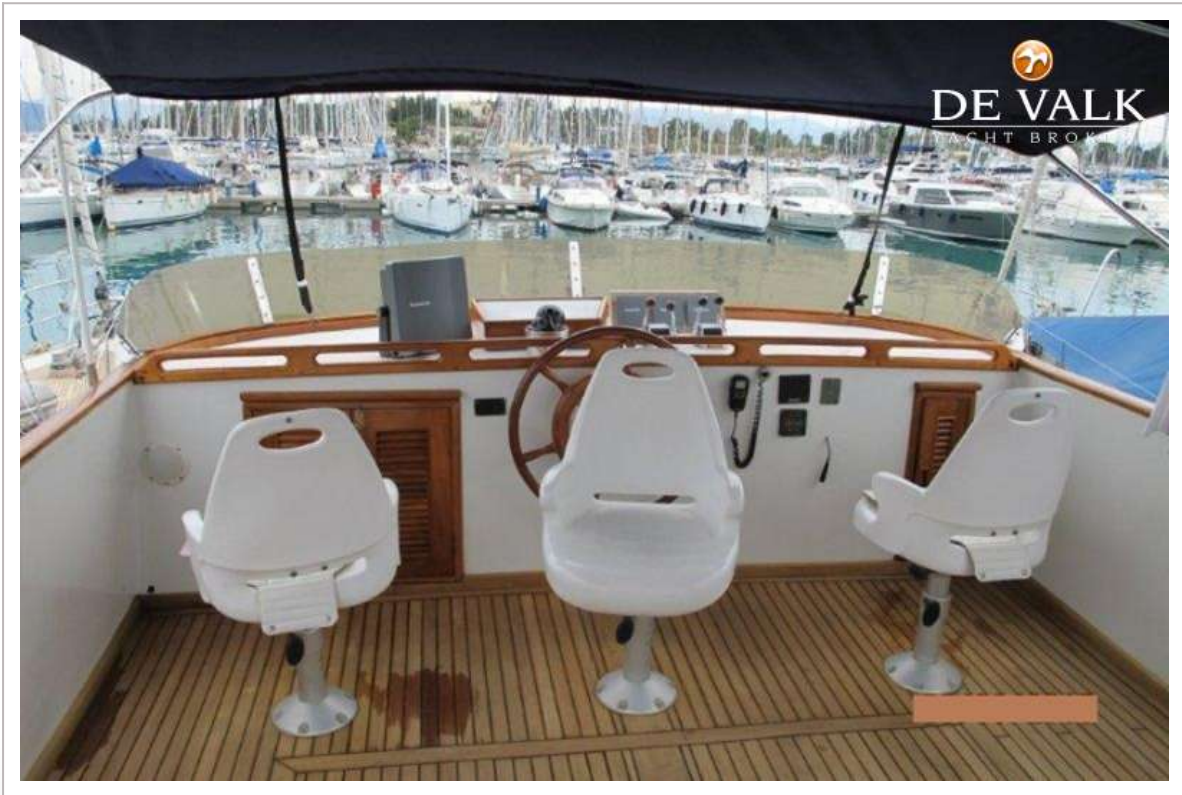
C & L TRAWLER 44



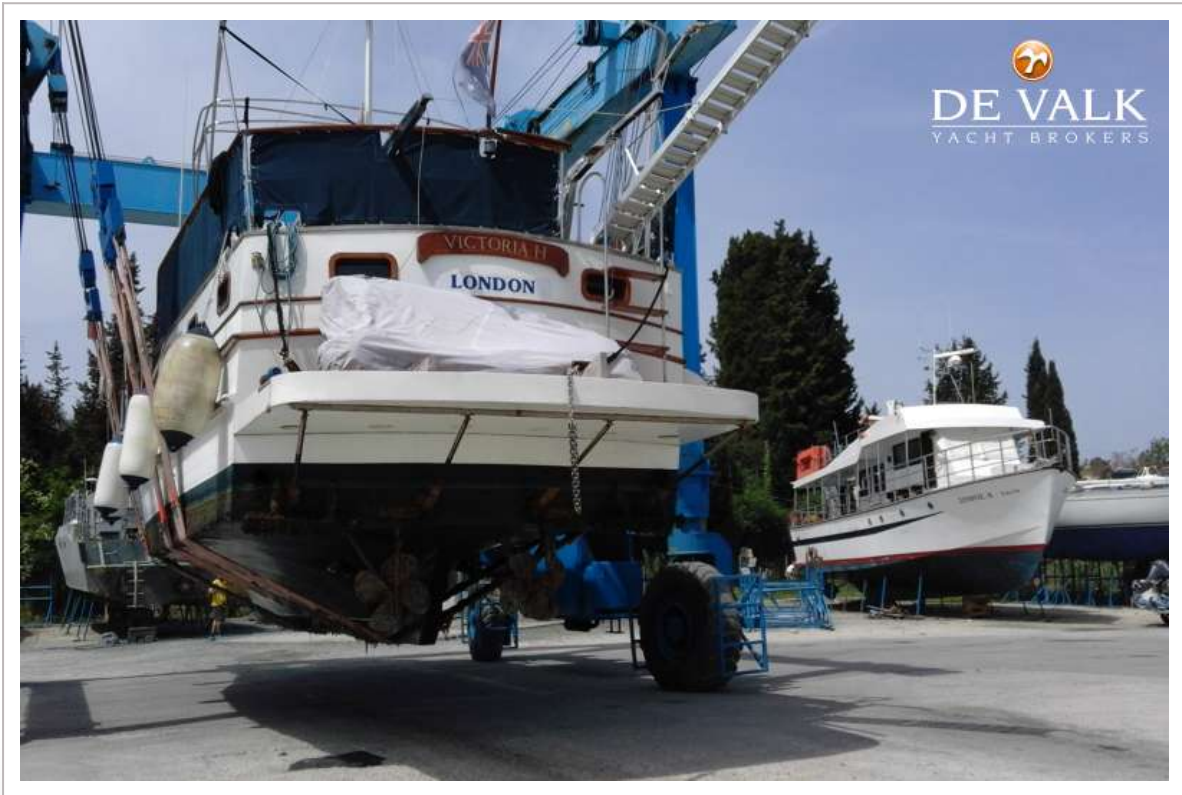
C & L TRAWLER 44



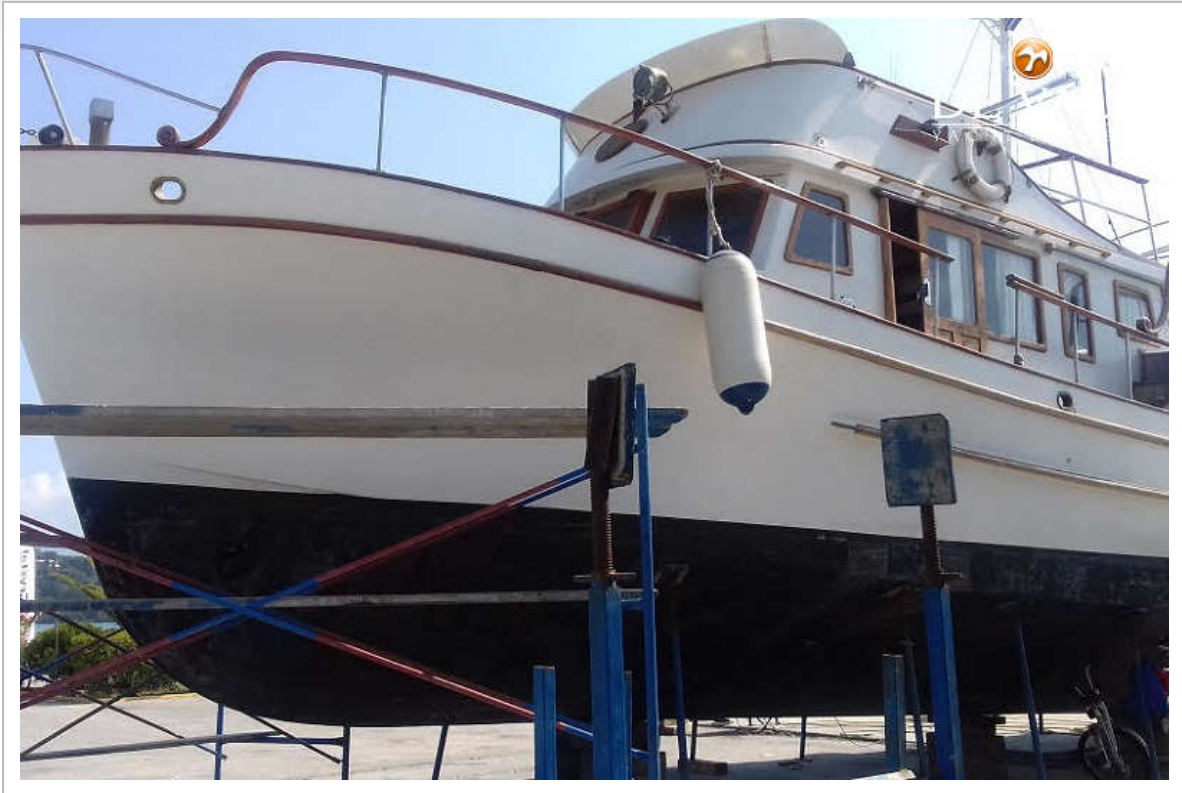
C & L TRAWLER 44



C & L TRAWLER 44



C & L TRAWLER 44



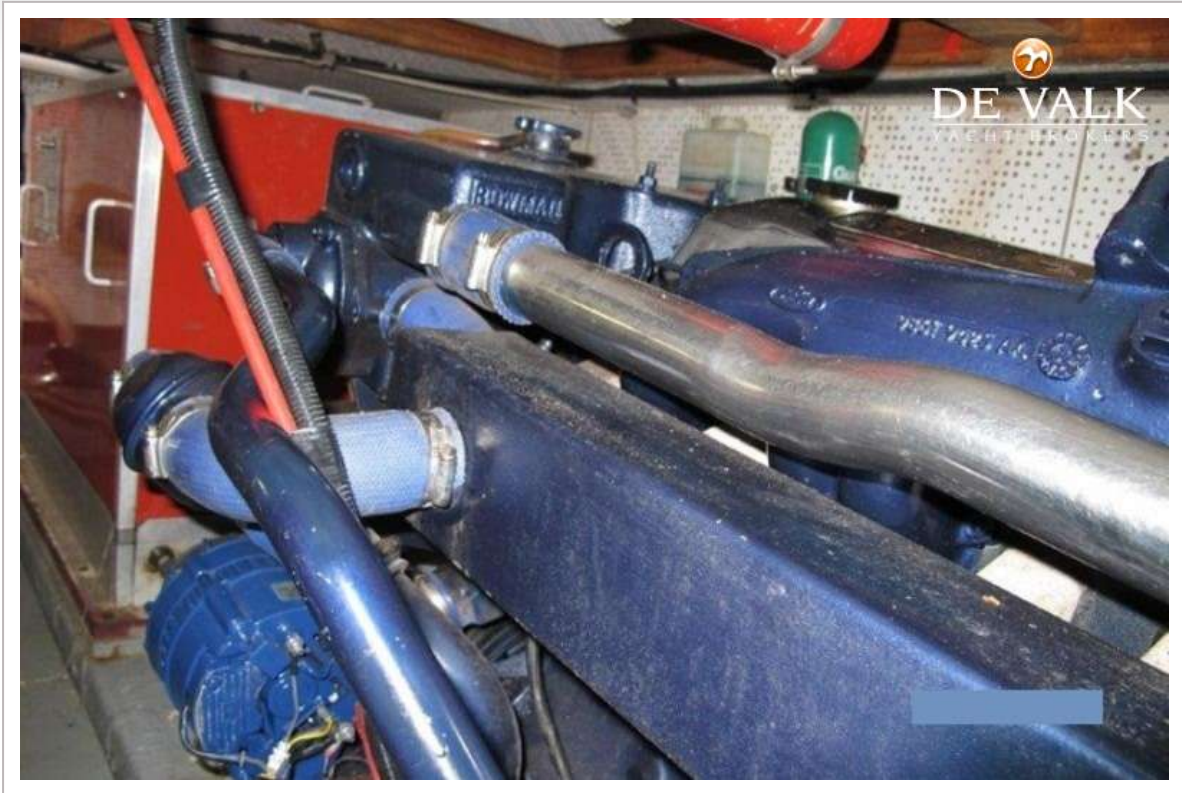
C & L TRAWLER 44



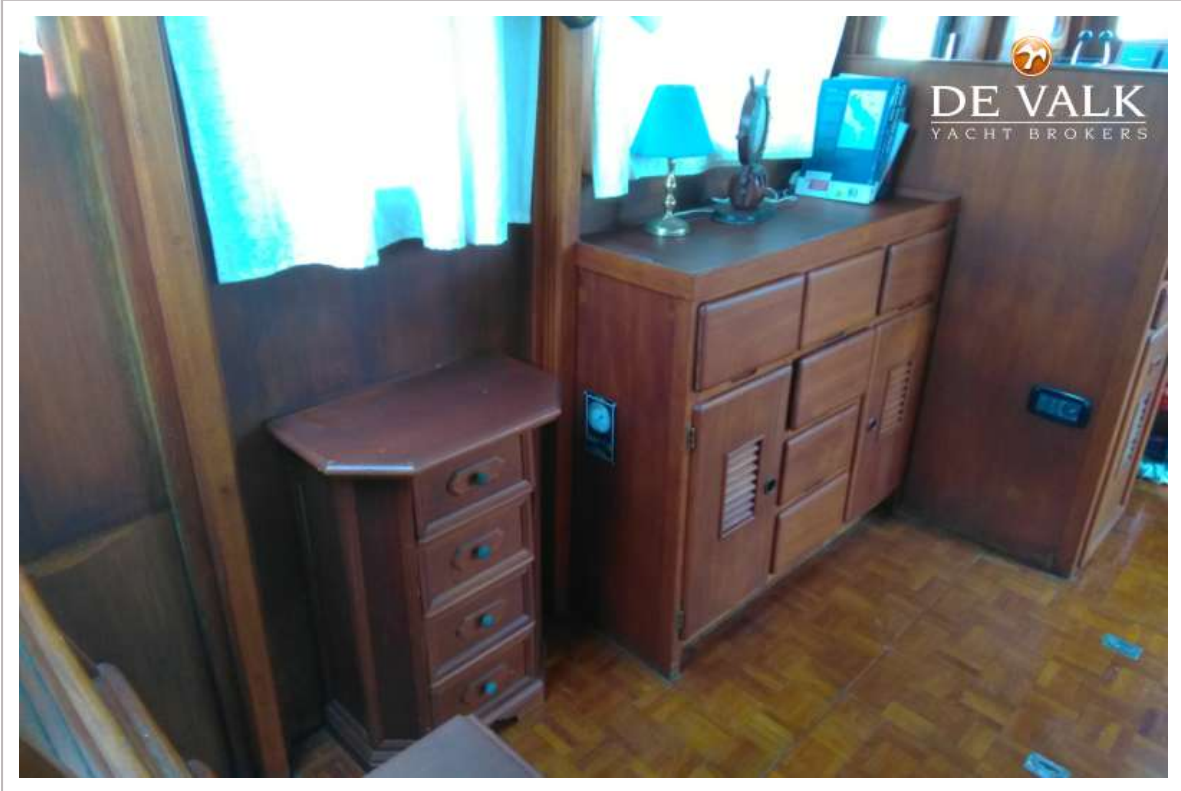
C & L TRAWLER 44



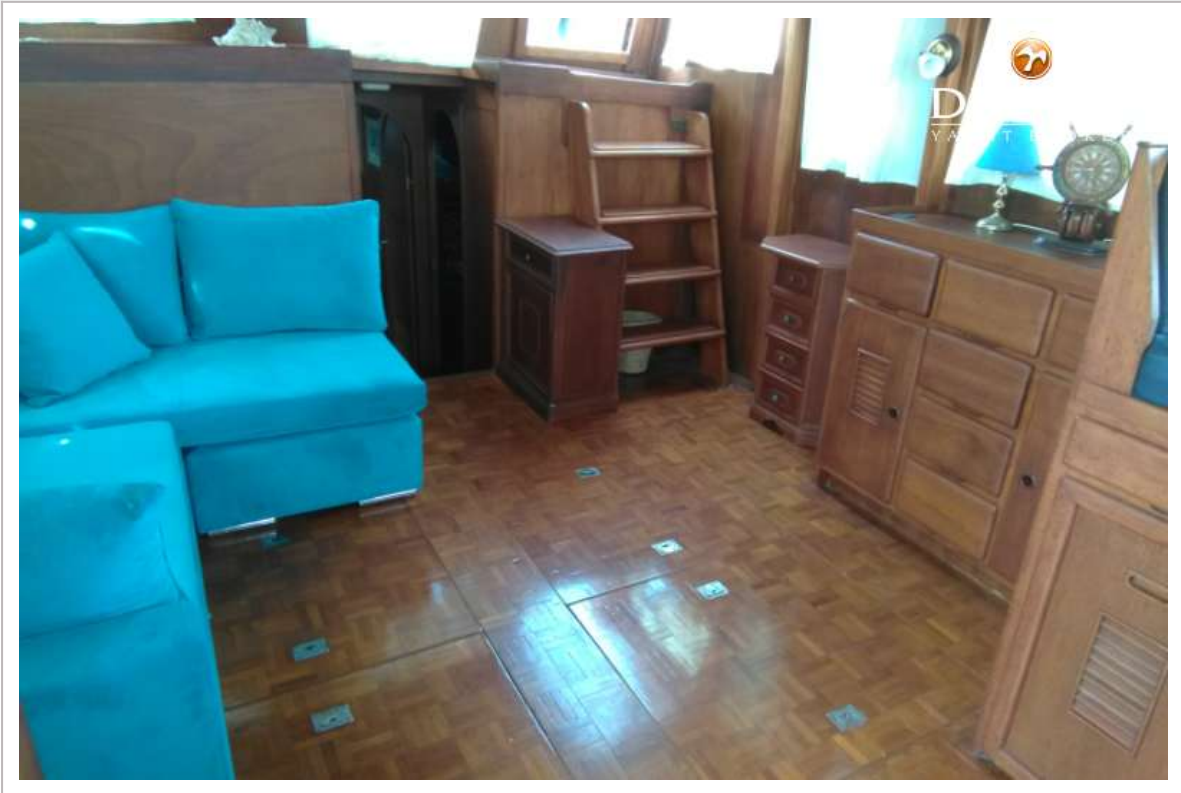
C & L TRAWLER 44



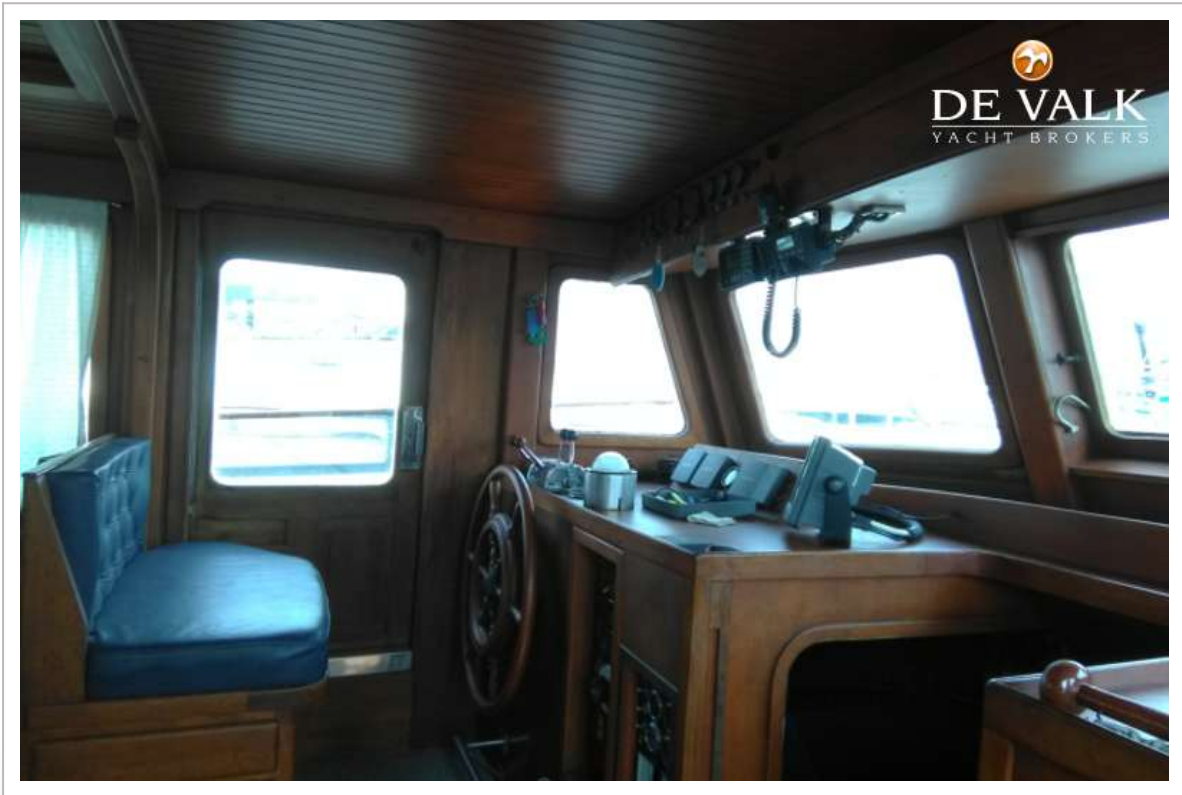
C & L TRAWLER 44



C & L TRAWLER 44



C & L TRAWLER 44



C & L TRAWLER 44



C & L TRAWLER 44



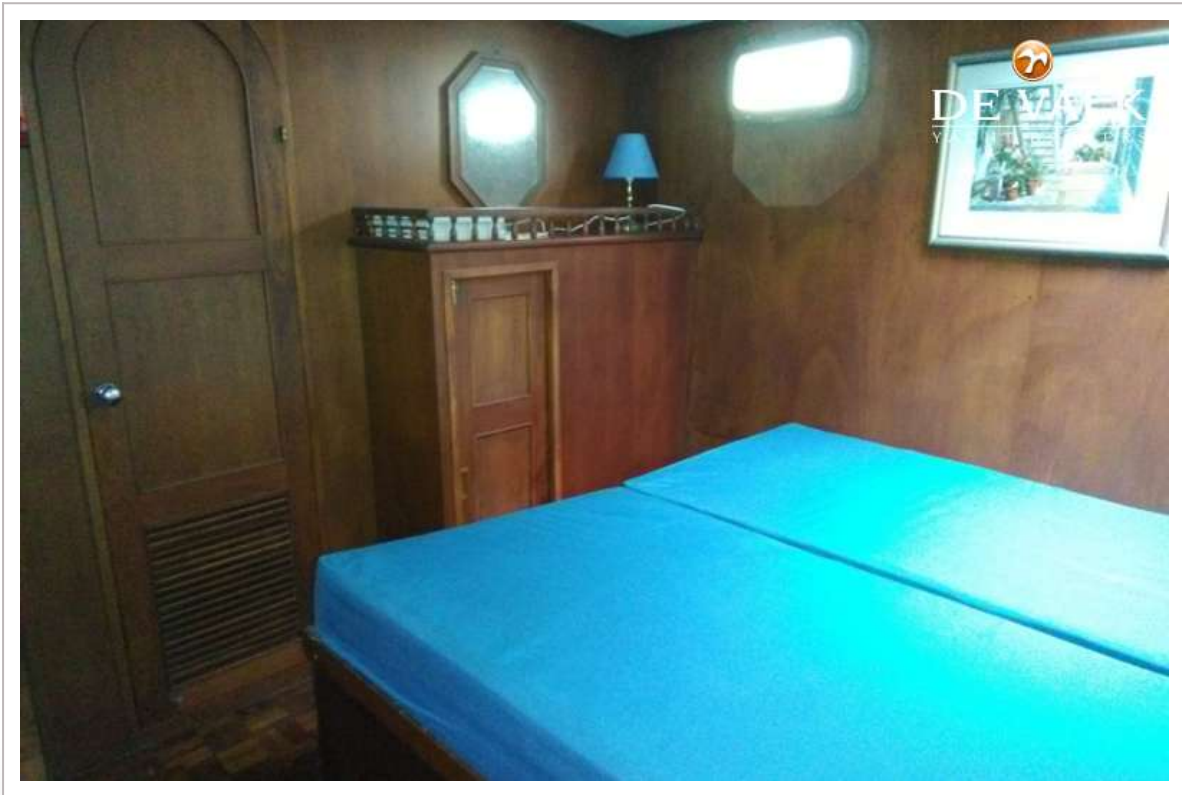
C & L TRAWLER 44



C & L TRAWLER 44



C & L TRAWLER 44



C & L TRAWLER 44

