



## BEAUFORT 16 KETCH



# BEAUFORT 16 KETCH

## BROKER'S COMMENTS

This Classic Ketch , designed by the famous J.J.Herbulot, constructed in France & fitted out for open seas cruising, is chartered with Skipper for cruises in the Ionian sea. Beaufort 16, former private yacht of the renowned Serb film director Emir Kusturica, benefits from a major refit in her current ownership and displays very high quality craftsmanship. Her Greek Charter License is valid.

*Sofia Ilia-Salvanou*

## SPECIFICATIONS

<b>Dimensions</b>	15.80 x 4.40 x 2.20 (m)	<b>Builder</b>	SEC St. Mandrier - Architect: Galliant
<b>Built</b>	1974	<b>Cabins</b>	3
<b>Material</b>	Wood Epoxy	<b>Berths</b>	8
<b>Engine(s)</b>	1 x Yanmar 4 Cylind. 4LH-H diesel	<b>Hp/Kw</b>	140.00 (hp), 102.90 (kw)
<b>Asking price</b>	€ 139.000 (VAT Paid)	<b>Lying</b>	at sales office

## CONTACT

<b>Sales office</b>	De Valk Corfu	<b>Telephone</b>	(+30) 266 111 8095
<b>Address</b>	New Port of Corfu, near Gouvia Marina 490 83 Corfu GR	<b>E-mail</b>	corfu@devalk.nl

## DISCLAIMER

These particulars are given in good faith as supplied but cannot be guaranteed.



# BEAUFORT 16 KETCH

## GENERAL

Model	BEAUFORT 16 KETCH
Type	sailing yacht
LOA (m)	15,80
Beam (m)	4,40
Draft (m)	2,20
Year built	1974
Builder	SEC St. Mandrier - Architect: Galliant
Country	France
Designer	J. J. Herbulot
Displacement (t)	16
Ballast (tonnes)	5
CE norm	NA
Hull material	wood epoxy
Hull colour	white
Keel type	fin keel With bulb
Superstructure material	wood epoxy
Rubbing strake	yes
Deck material	wood epoxy
Deck finish	teak
Superstructure deck finish	teak
Cockpit deck finish	teak
Antifouling (year)	2022
Window frame	aluminium
Window material	polycarbonate
Deckhatch	yes
Portholes	aluminium
Insulation	rockwool
Fuel tank (litre)	stainless steel 450
Fuel tank 2 (litre)	stainless steel 450
Level indicator (fuel tank)	yes



# BEAUFORT 16 KETCH

Freshwater tank (litre)	2 X 600
Level indicator (freshwater)	yes
Blackwater tank (litre)	stainless steel 60
Wheel steering	chain steering
Outside helm position	chain steering
Emergency tiller	yes
More info on paintwork	AWLGRIP snow white

## ACCOMMODATION

Cabins	3
Berths	8
Crew cabin	1
Crew berths	1
Interior	mahogany
Layout	yes
Floor	vinyl
Aft deck	yes
Saloon	yes
Heating	electric 220V
Air-conditioning	single cycle airco
Navigation center	yes
Chart table	yes
Aft Cabin	For Crew with separate toilet
Dining room	yes
Dinette	yes
Dinette to convert into berth	yes
Sliding door to cockpit	yes
Galley	yes
Countertop	wood
Sink	stainless steel
Cooker	calor gas



# BEAUFORT 16 KETCH

Oven	yes
Extractor	yes
Gas alarm	yes
Fridge	yes
Hot water system	220V + engine
Water pressure system	electrical
Kettle	yes
Coffee maker	yes
Crockery	yes
Owners cabin	double bed
Bed length (m)	2 m
Wardrobe	hanging/drawers/shelves
Bathroom	en suite
Toilet	en suite
Toilet system	yes
Wash basin	at the toilet
Shower	en suite
Guest cabin 1	twin single
Wardrobe	hanging
Bathroom	shared
Toilet	shared
Toilet system	yes
Wash basin	at the toilet
Shower	shared
Guest cabin 2	double bed
Wardrobe	hanging/drawers/shelves
Bathroom	shared
Toilet	shared
Toilet system	yes
Wash basin	at the toilet
Shower	shared
Crew cabin(s)	Single bed



# BEAUFORT 16 KETCH

Toilet (crew)	yes
Toilet system	yes

## MACHINERY

No of engines	1
Make	Yanmar
Type	4 Cylind. 4LH-H
HP	140
kW	102.90
Fuel	diesel
Year installed	2002
Year of overhaul	2018
Maximum speed (kn)	9
Cruising speed (kn)	8
Consumption (l/hr)	6
Engine hours	750
Engine cooling system	freshwater heat exchanger
Drive	shaft
Shaft seal	yes
Engine controls	yes
Gearbox	mechanical
Bowthruster	electric
Exhaust	watercooled
Propeller type	fixed
Propeller blades	3
Propeller shaft material	stainless steel
Shaft lubrication	water
Manual bilge pump	yes
Electric bilge pump	yes
Bilge alarm	yes
Electrical installation	yes



# BEAUFORT 16 KETCH

Generator	silent separator 10 KVA
Running hours generator	500
Batteries	6
Start battery	1
Service battery	4
Generator battery	1
Inverter	yes
Battery charger/inverter	yes
Solar panel	yes
Shorepower	with cable

## NAVIGATION

Compass	yes
Depth sounder	yes
Depth sounder/log	yes
VHF	yes
Autopilot	yes
Rudder angle indicator	yes
Plotter/GPS	yes
Electronis chart(s)	yes
Radio receiver	yes
Transmitter	yes
EPIRB	yes
Navigation lights	yes
Searchlight	yes
Loudhailer	yes

## EQUIPMENT

Sprayhood	yes
Cockpit cover	yes
Sun awning	X 2



# BEAUFORT 16 KETCH

Cockpit cushions	yes
Cockpit table	yes
Bathing platform	yes
Boarding ladder	stainless steel
Transom door	yes
Gangway	yes
Deck shower	yes
Anchor	Delta
Anchor chain	110 m
Anchor 2	Danforth
Windlass	electrical
Deck wash	yes
Dinghy	rigid inflatable
Outboard	yes
Outboard support	yes
Deck crane	manual
Sea railing	yes
Life raft	container
Life raft (pers)	12
Last life raft survey	2019
Lifejackets	yes
Safety harness	yes
Lifebuoy	yes
Rope cutter	yes
Window ventilator	yes
Horn	yes
Binocular	yes
Radar reflector	yes
Fenders	yes
Mooring lines	yes
Spare parts	yes
Tools	yes





# BEAUFORT 16 KETCH

Alarm system	yes
Radio-cd player	yes
Speakers in salon	yes
Clock - barometer	yes
Fire extinguisher	yes
Latest extinguisher survey	2019

## RIGGING

Rigging	ketch
Standing rigging	wire
Material mast	aluminium
Spreaders	2
Mainsail	2018
Mainsail cover	yes
Furling boom	yes
Mizzen	yes
Mizzen sailcover	yes
Genoa	2010
Genoa furler	yes
Gennaker	yes
Spinnaker	2000
Reefing System	main in-boom furling
Primary sheet winch	yes
Secondary sheet winch	yes
Genoa sheetwinches	yes
Halyard winches	yes
Spinnaker winch	yes
Reefing winch	yes
Multifunctional winches	yes
Spi-pole	aluminium
Extra info	Spare sails & asymmetric Spinnaker





# BEAUFORT 16 KETCH

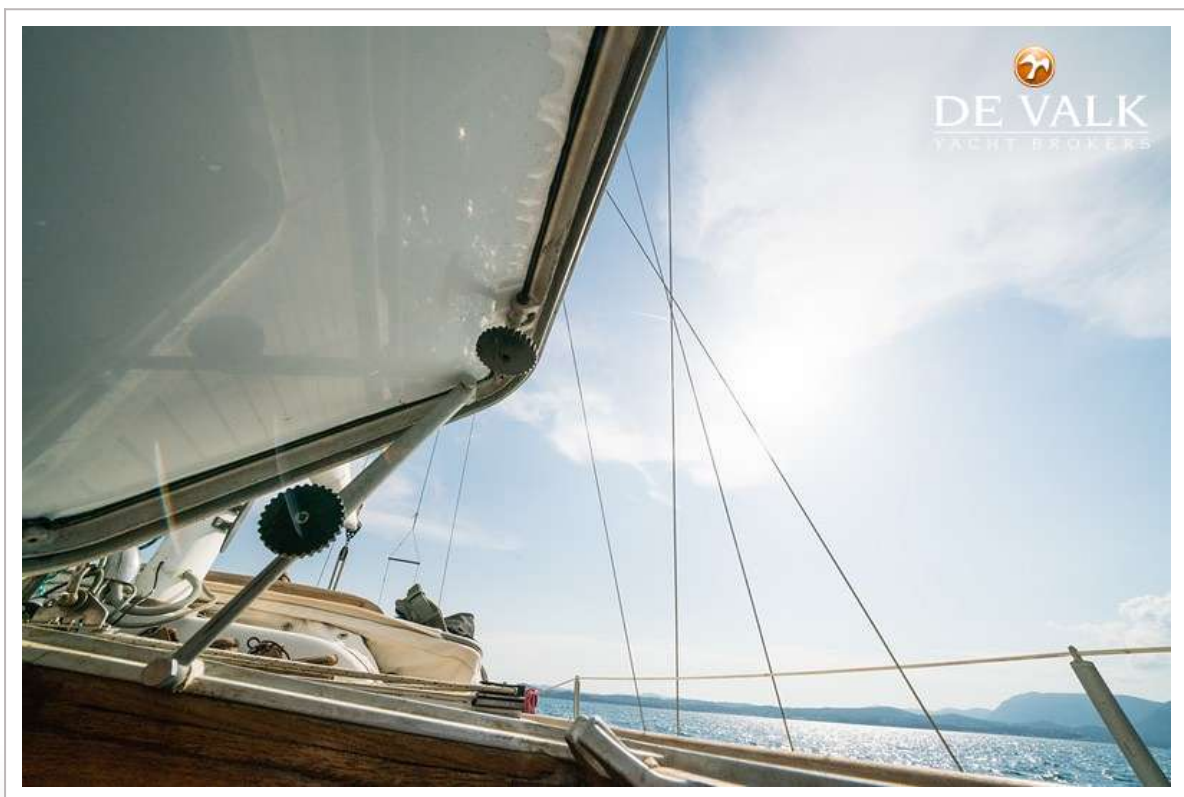


# BEAUFORT 16 KETCH





# BEAUFORT 16 KETCH



# BEAUFORT 16 KETCH





# BEAUFORT 16 KETCH





# BEAUFORT 16 KETCH





# BEAUFORT 16 KETCH





# BEAUFORT 16 KETCH





# BEAUFORT 16 KETCH



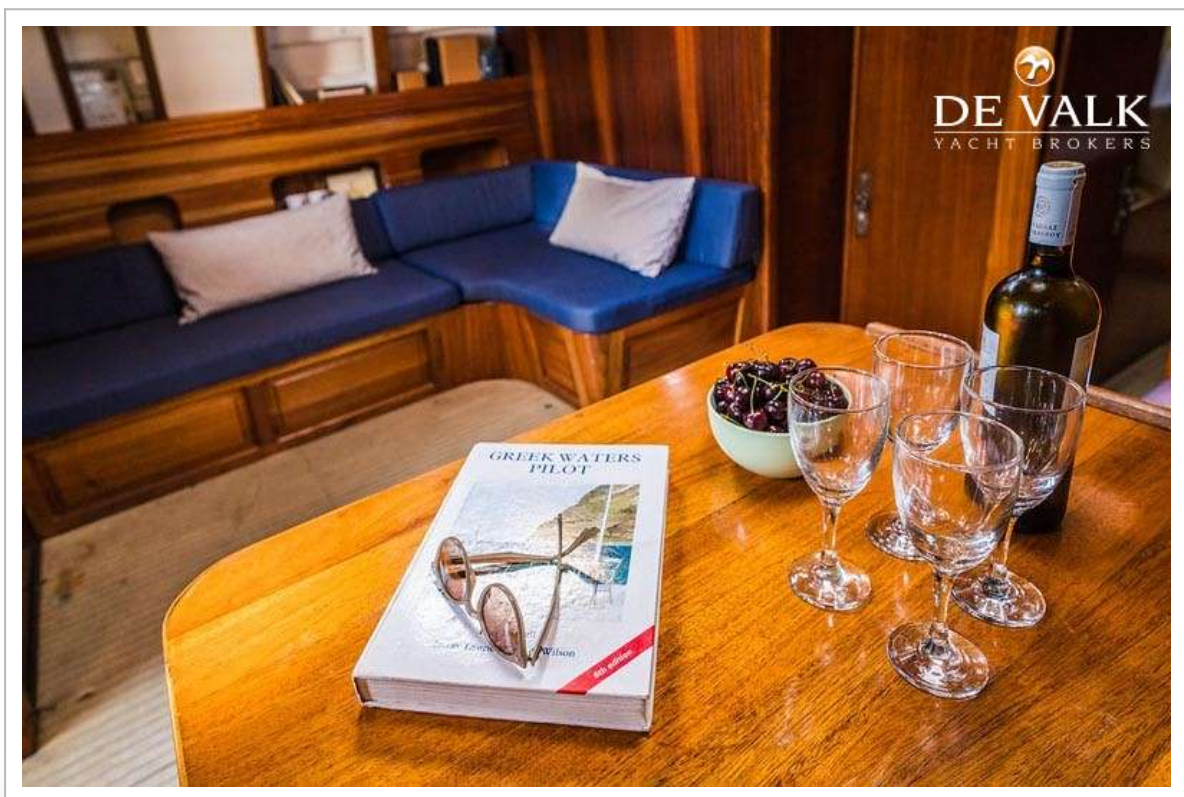


# BEAUFORT 16 KETCH



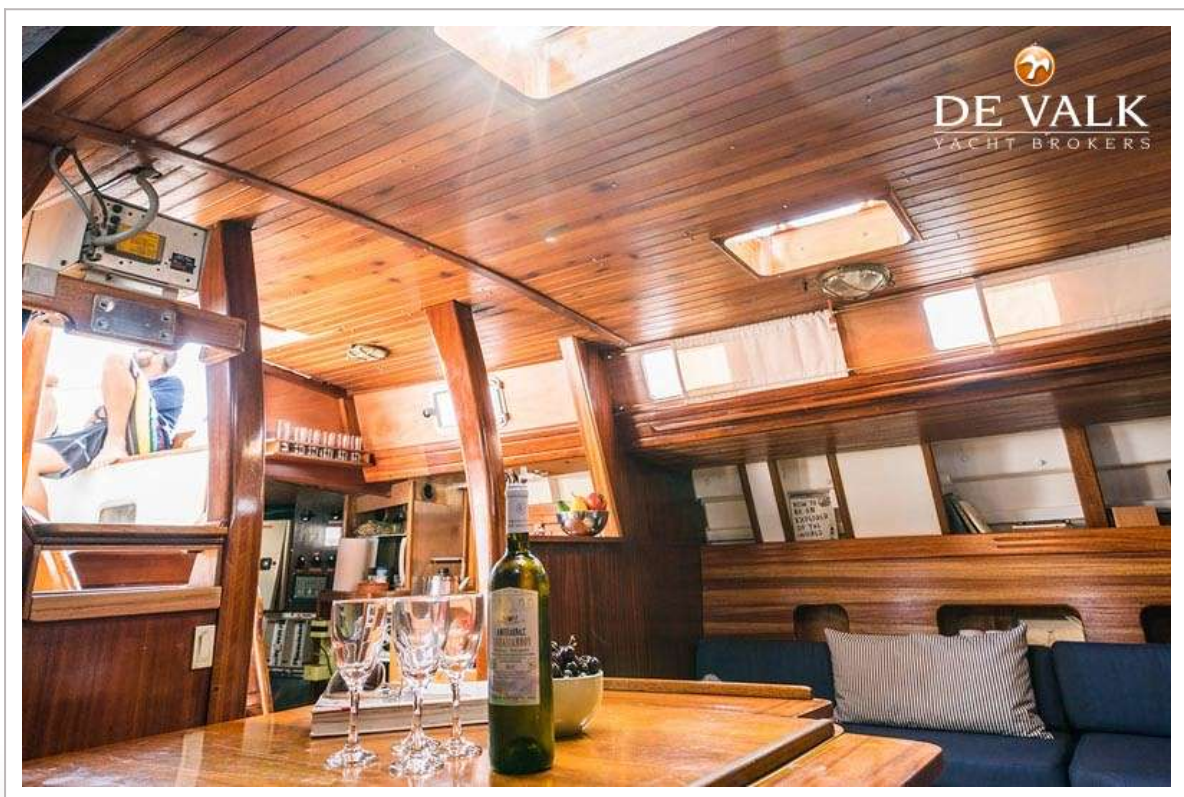
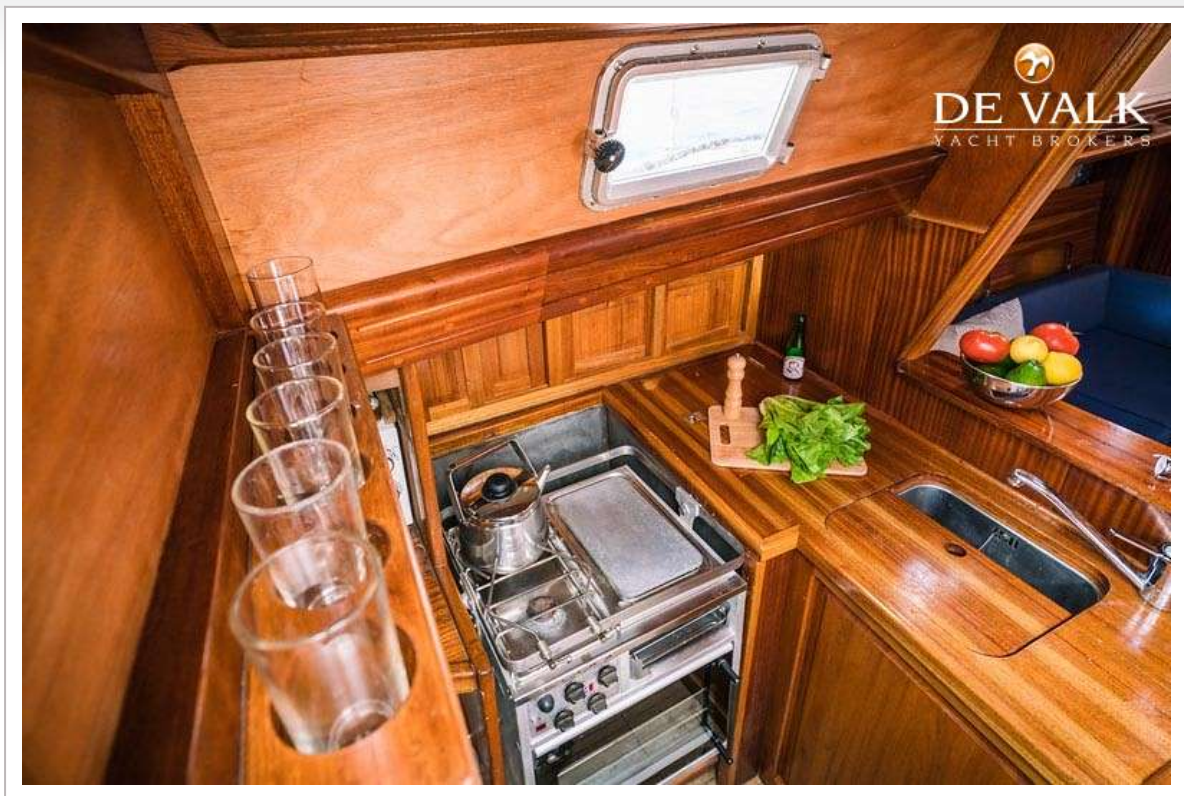


# BEAUFORT 16 KETCH



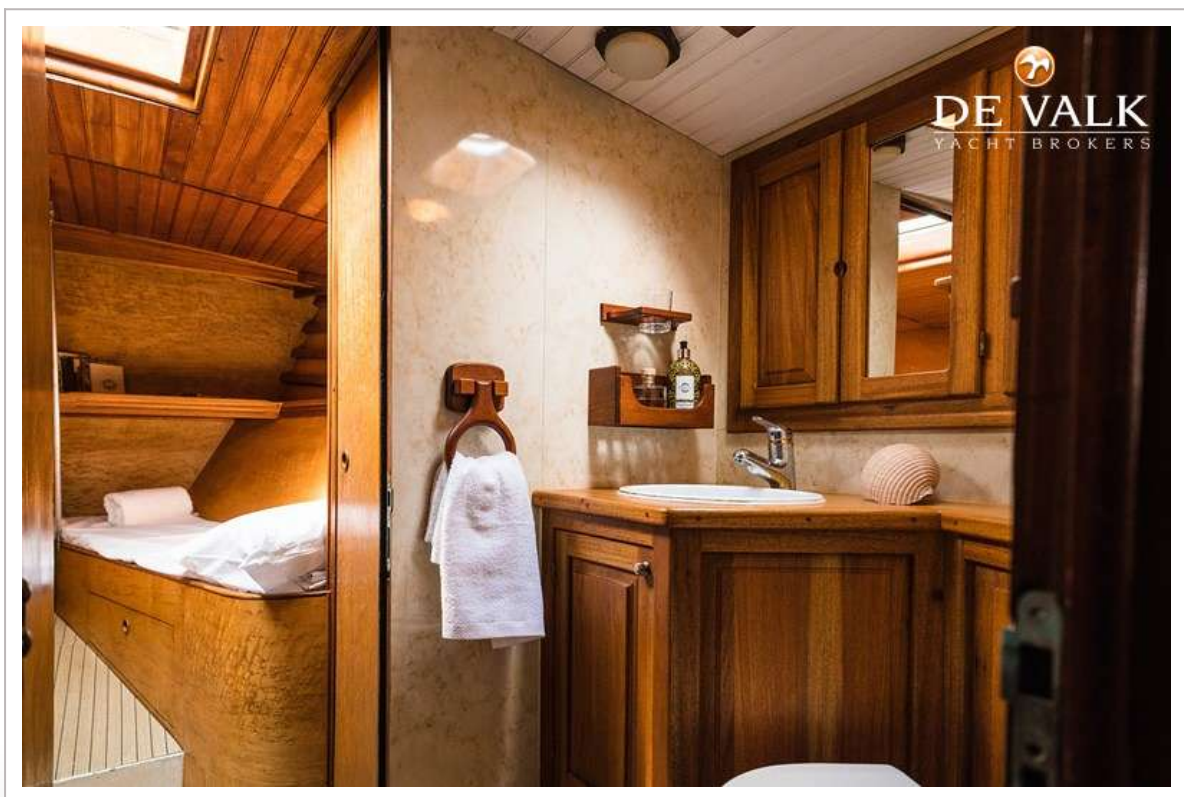
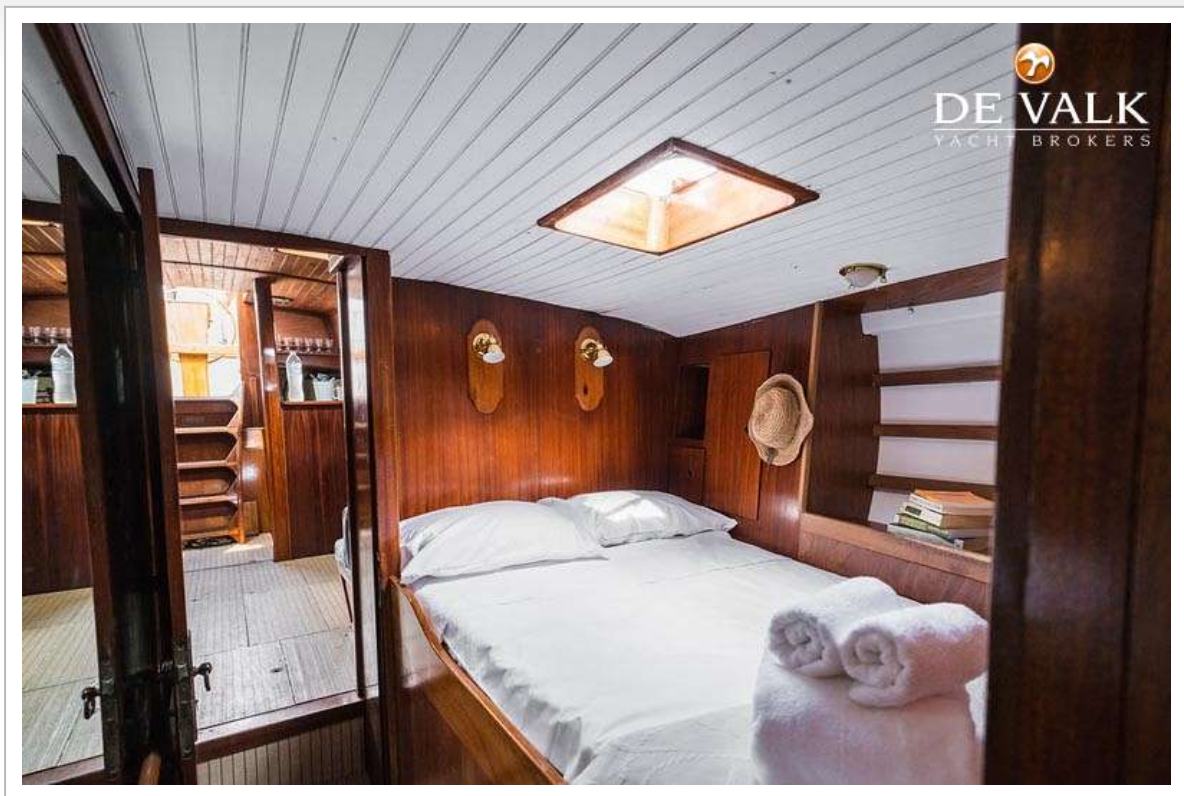


# BEAUFORT 16 KETCH

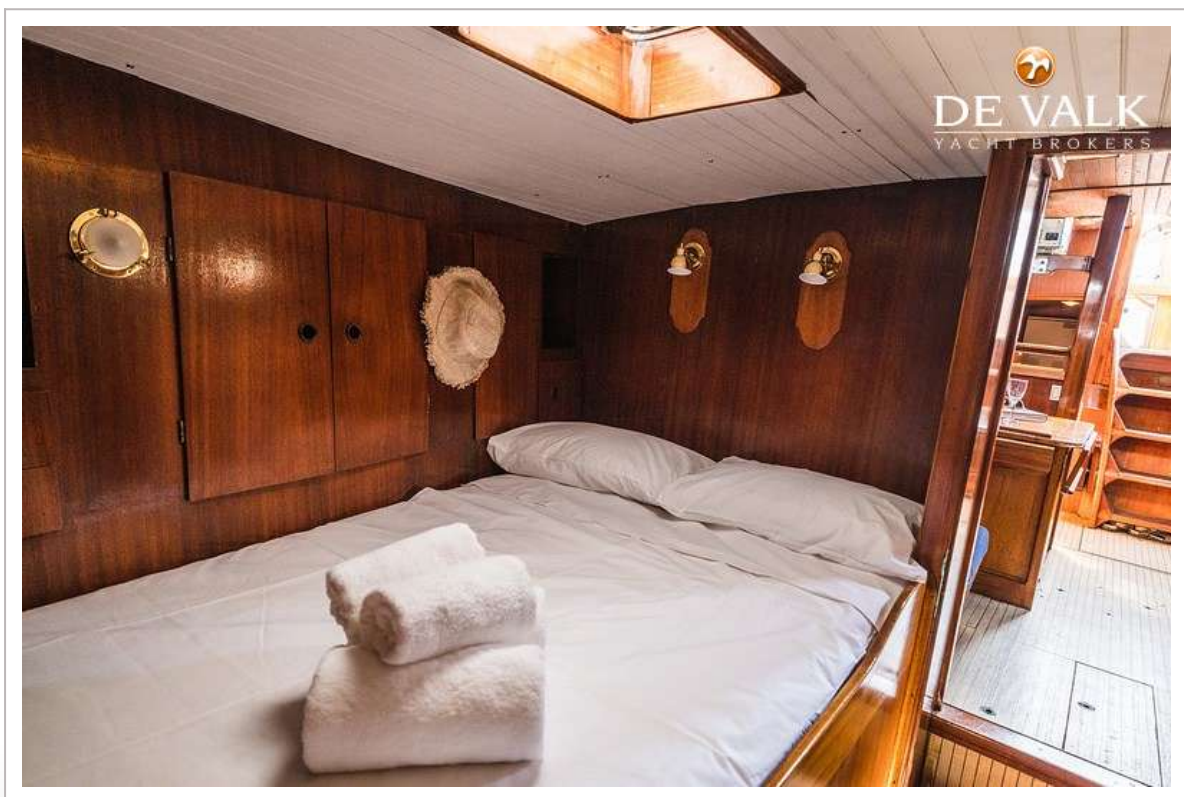
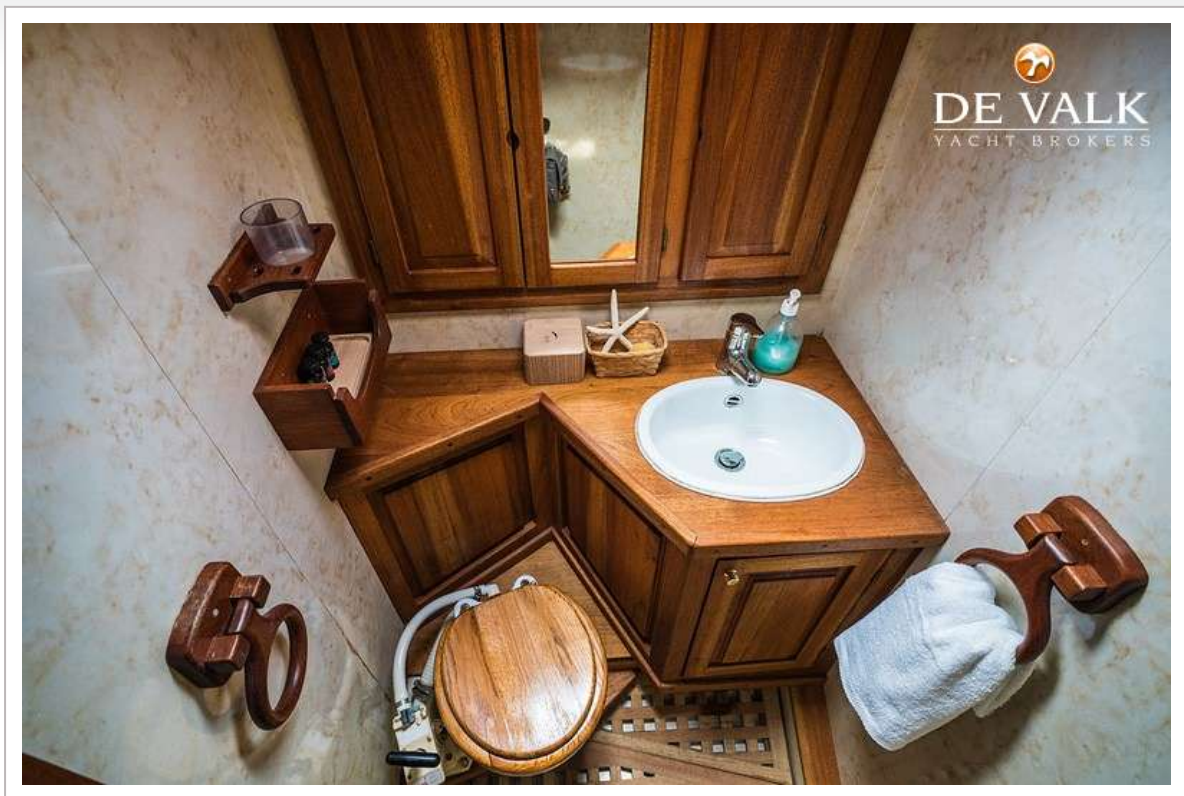




# BEAUFORT 16 KETCH

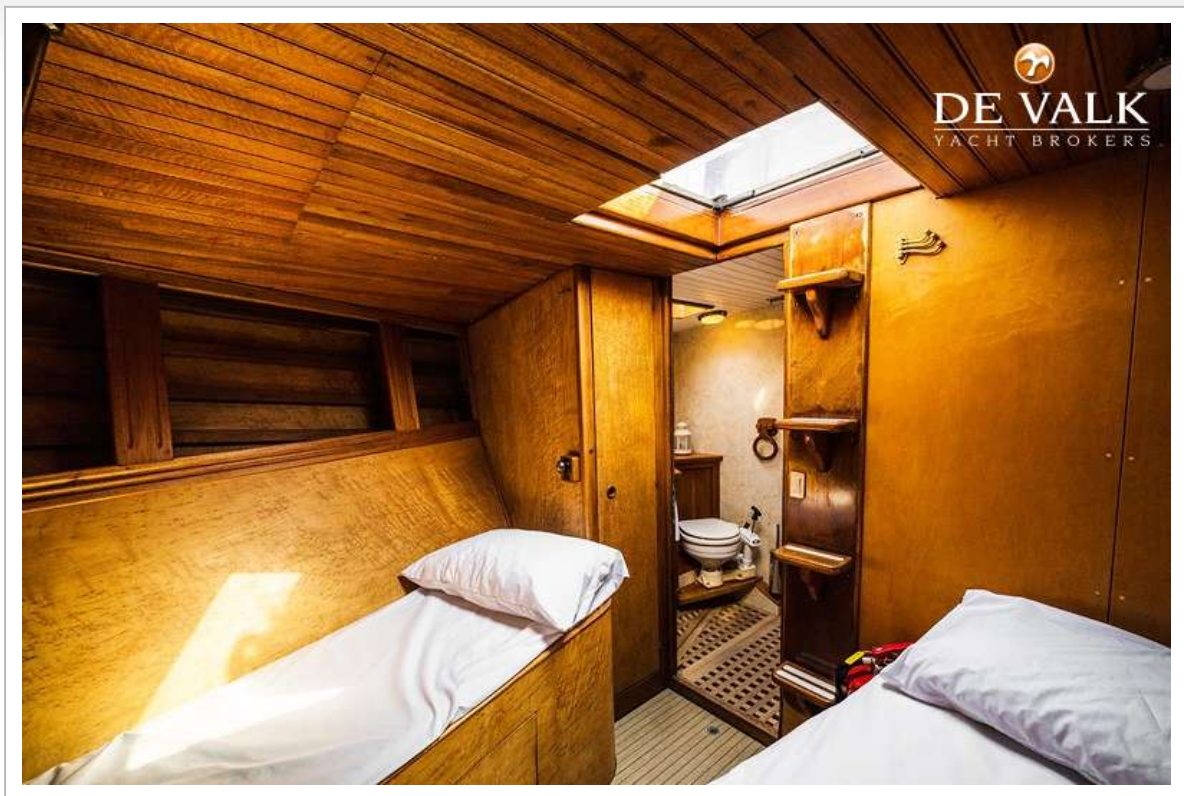


# BEAUFORT 16 KETCH





# BEAUFORT 16 KETCH



# BEAUFORT 16 KETCH

