



DE VALK
YACHT BROKERS



BUETZFLETH 48,5



DE VALK
YACHT BROKERS

BUETZFLETH 48,5

BROKER'S COMMENTS

"BUETZFLETH 48,5 is a purposeful looking M/Y with traditional lines & design. She is a strongly built vessel with good seakeeping reputation & displays very high quality craftsmanship. Her attractive lines give that classic look and her beautiful wood interior (rarely found on boats built today) does not disappoint! She benefits from a good maintenance in her current ownership."

Sofia Iliia-Salvanou

SPECIFICATIONS

Dimensions	14,96 x 4,75 x 1,30 (m)	Builder	Bootswerft-Brauer-Buetzfleth GmbH & Co.KG
Built	1993	Cabins	1
Material	GRP	Berths	4
Engine(s)	2 x MAN D2866LE401 diesel	Hp/Kw	2 x 600 (hp), 441 (kw)
Asking price	EUR 154.000 (vat: paid)	Lying	not at sales office

CONTACT

Sales office	De Valk Corfu	Telephone	(+30) 266 111 8095
Address	New Port of Corfu, near Gouvia Marina 490 83 Corfu Greece	Fax	+302661118095
		E-mail	corfu@devalk.nl

DISCLAIMER

These particulars are given in good faith as supplied but cannot be guaranteed and cannot be used for contracts.



GENERAL

Model	BUETZFLETH 48,5
Type	motor yacht
LOA (m)	14,96
Beam (m)	4,75
Draft (m)	1,30
Year built	1993
Builder	Bootswerft-Brauer-Buetzfleth GmbH &Co.KG
Country	Germany
CE norm	NA
Hull material	GRP
Hull colour	white
Deck material	teak
Superstructure deck finish	teak
Cockpit deck finish	teak
Fuel tank (litre)	2400
Level indicator (fuel tank)	yes
Freshwater tank (litre)	1000
Level indicator (freshwater)	yes
Blackwater tank (litre)	200
Wheel steering	yes
Inside helm position	yes

ACCOMMODATION

Cabins	1
Berths	4
Deck saloon	yes
Heating	Eberspaecher 8KW
Fridge	X 2
Freezer	X 1



Hot water system	yes
Water pressure system	yes
Manual and/or foot pump	yes
Bed length (m)	2 m
Wardrobe	yes
Bathroom	yes
Toilet	yes
Wash basin	yes
Shower	yes

MACHINERY

No of engines	2
Make	MAN
Type	D2866LE401
HP	600
kW	441
Fuel	diesel
Engine hours	788
Shaft seal	yes
Bowthruster	HYDRAULIC
Gearbox	ZF A311
Propeller blades	5
Propeller shaft material	INOX
Electric bilge pump	yes
Electrical installation	yes
Generator	FISCHER PANDA 18 KW
Batteries	yes
Start battery	2 X 140 AH
Service battery	540 AH
Battery monitor	MAGNETRONIC DCC 4000



Battery charger	X 3
Solar panel	2 X 245 WP
Trimtabs	ELECTRIC

NAVIGATION

Compass	Autohelm ST 50
Compass on flybridge	Plastimo Horizon 135
Depth sounder	Autohelm ST 50
Forw. looking depth sounder	Multi Autohelm ST 50
Log	Autohelm ST 50
Windset	Autohelm Tridata ST 50
Repeater	Autohelm ST 50
VHF	Sailor C4901 Compact HF SSB R2122
VHF handheld	Icom
Autopilot	Autohelm ST 7000
Rudder angle indicator	yes
Radar	Furuno
GPS	Furuno GPS Navigator GP70, Autohelm Navcenter, Raymarine RS130
Plotter	Raymarine E140W, Raymarine E7
Navtex	NAVTEX 2, Meteostar
Radio receiver	2 X Pionier
Navigation lights	yes

EQUIPMENT

Bathing platform	yes
Boarding ladder	yes
Gangway	yes
Deck shower	yes
Anchor	yes
Anchor chain	75 m



Chain counter	Magnetronic AKZ 200
Windlass	Lofrans Falkon
Windlass aft	Manual
Dinghy	Zodiac Cadet 250 Compact
Outboard	Yamaha F6 CMHS, 6 HP
Outboard support	yes
Radio-cd player	X 2 Pioneer



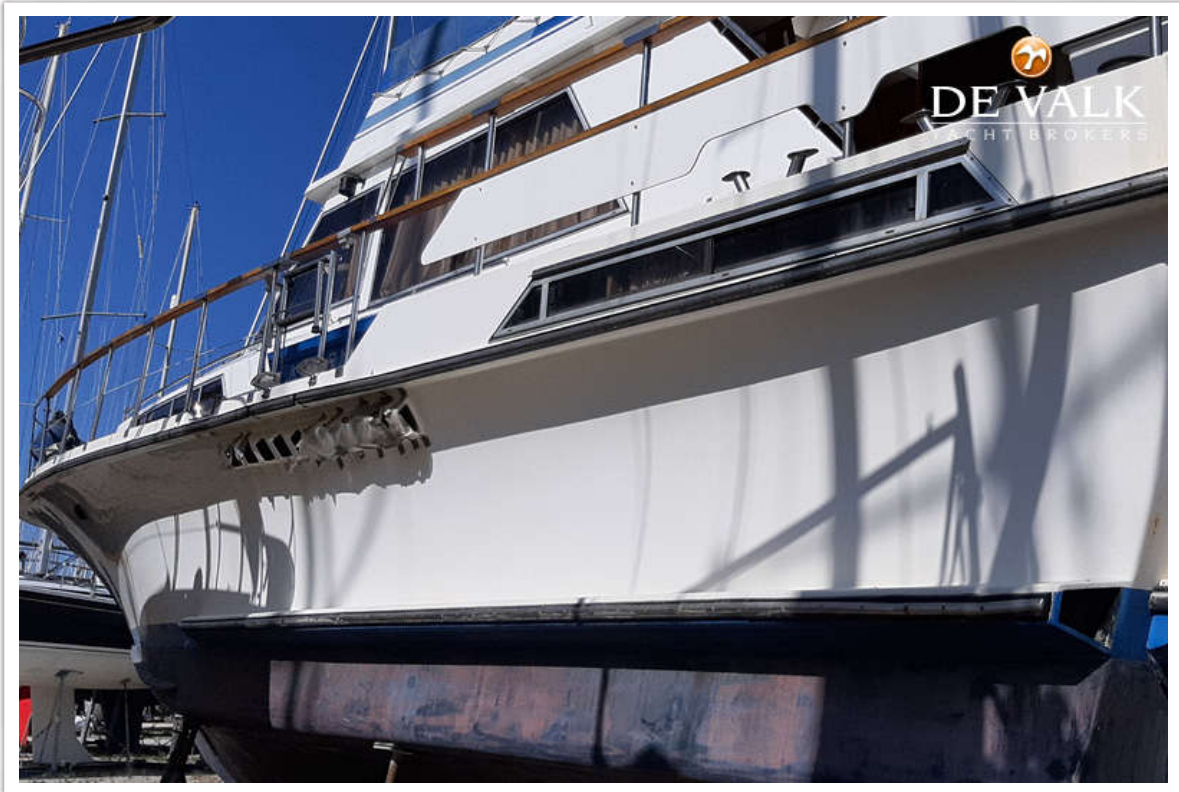
BUETZFLETH 48,5



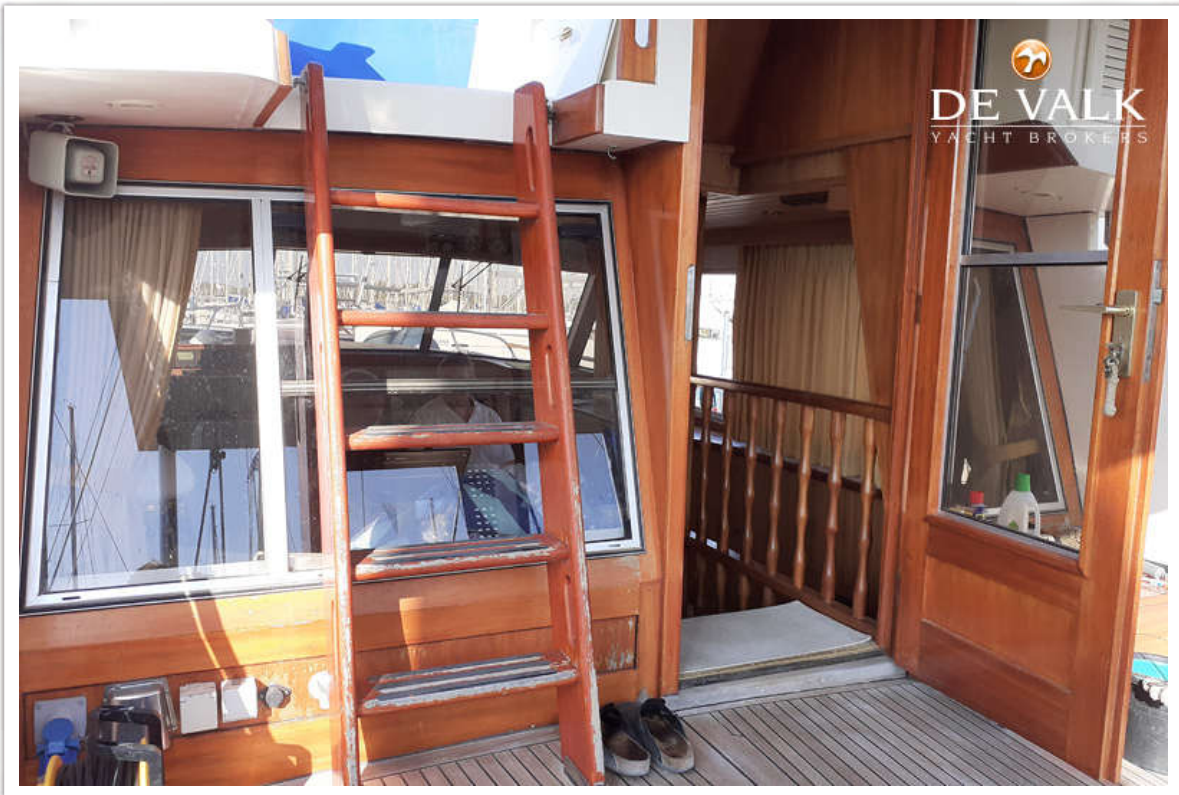
BUETZFLETH 48,5



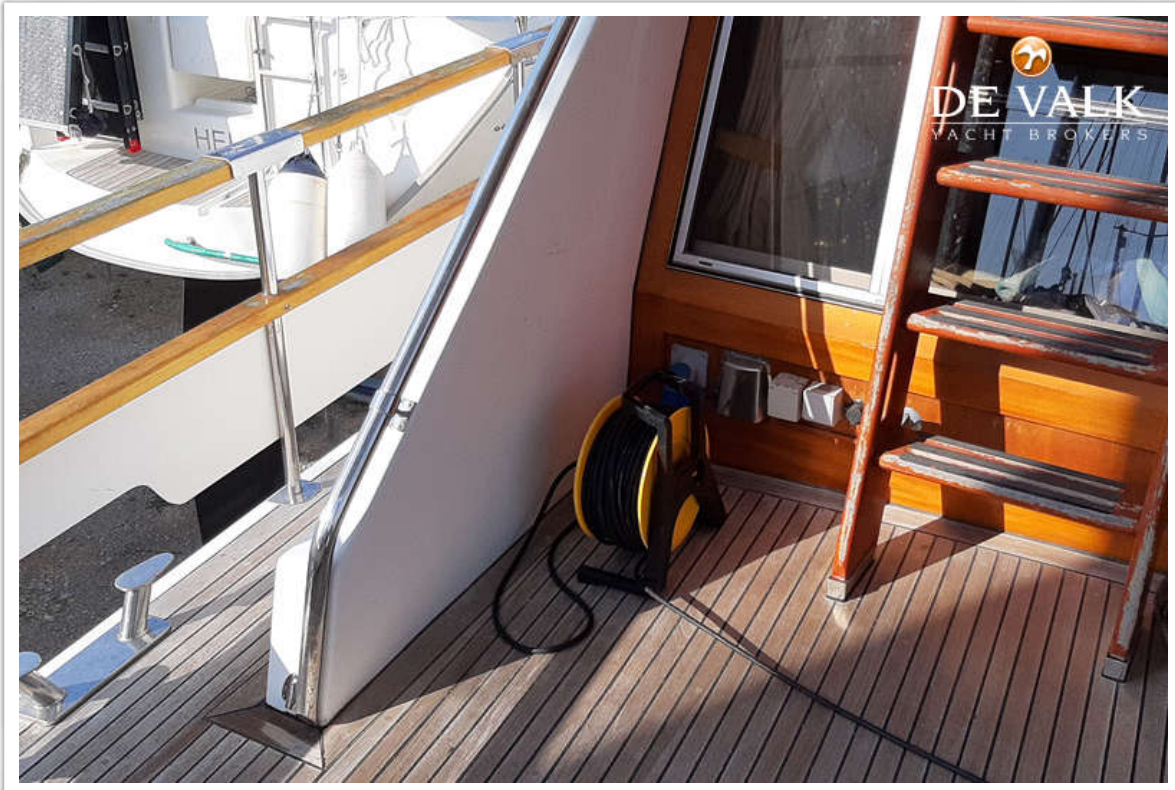
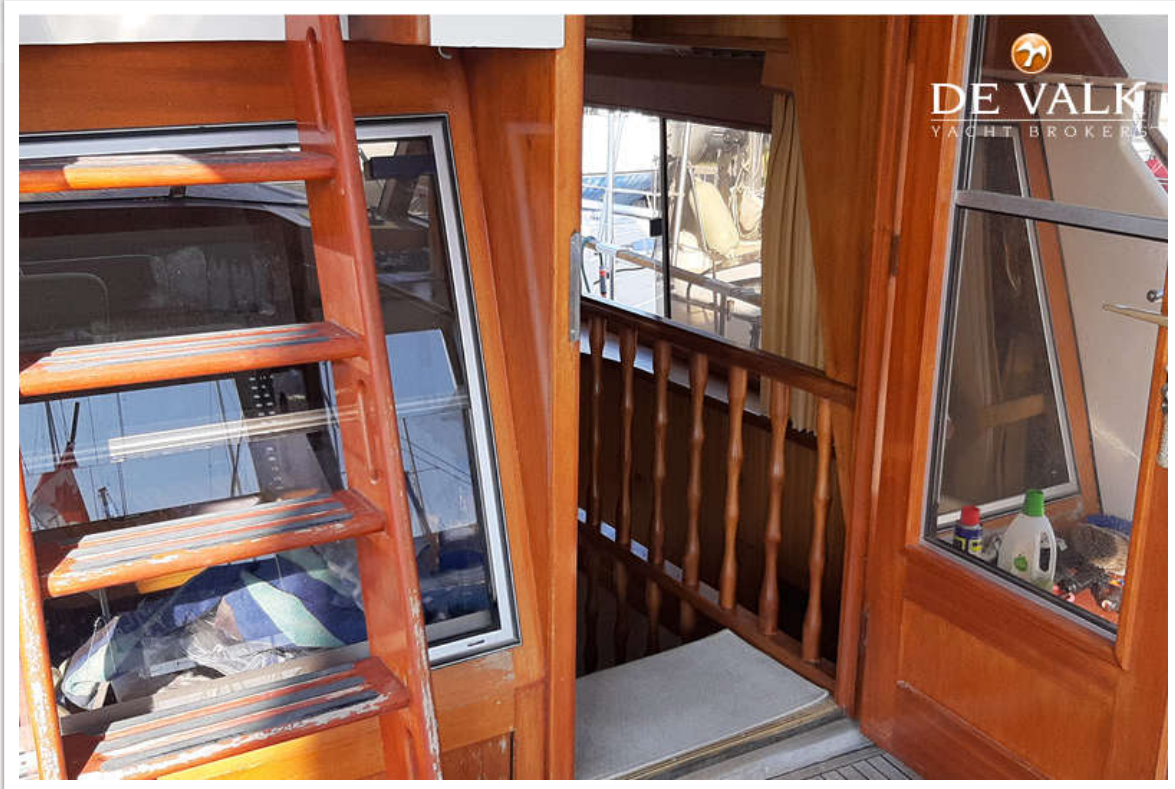
BUETZFLETH 48,5



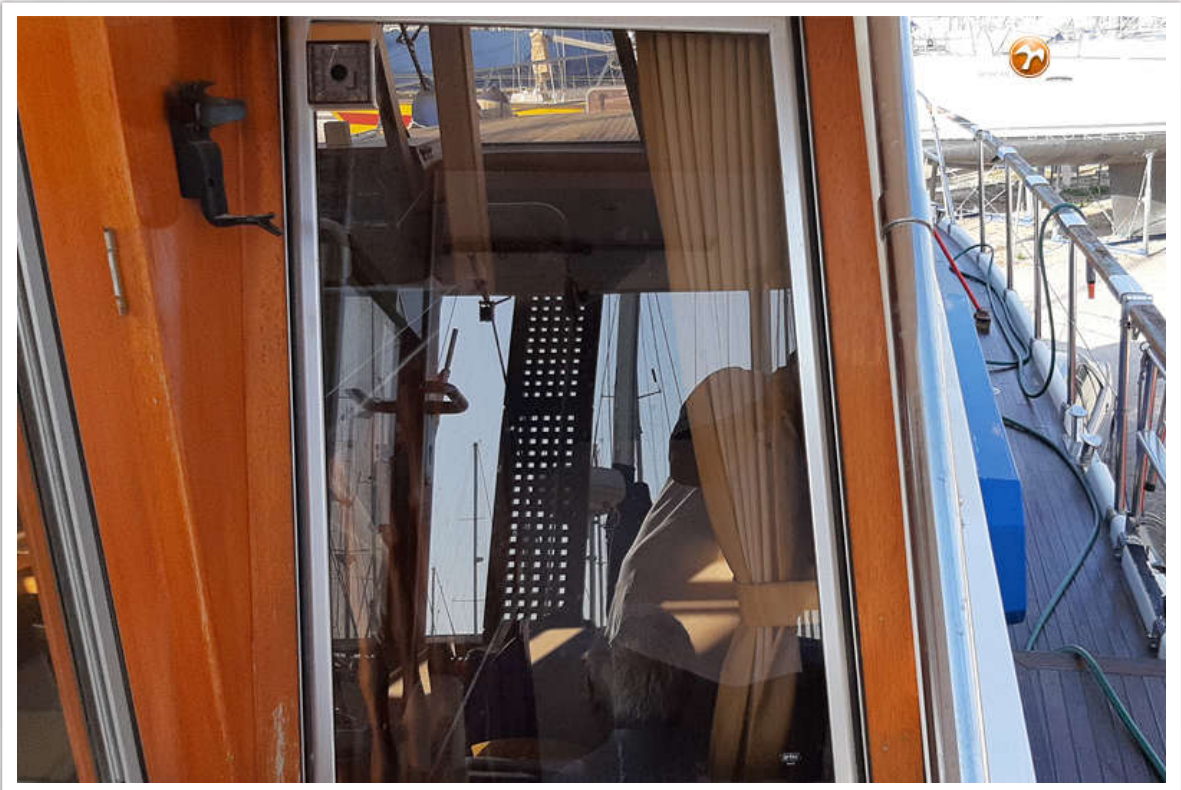
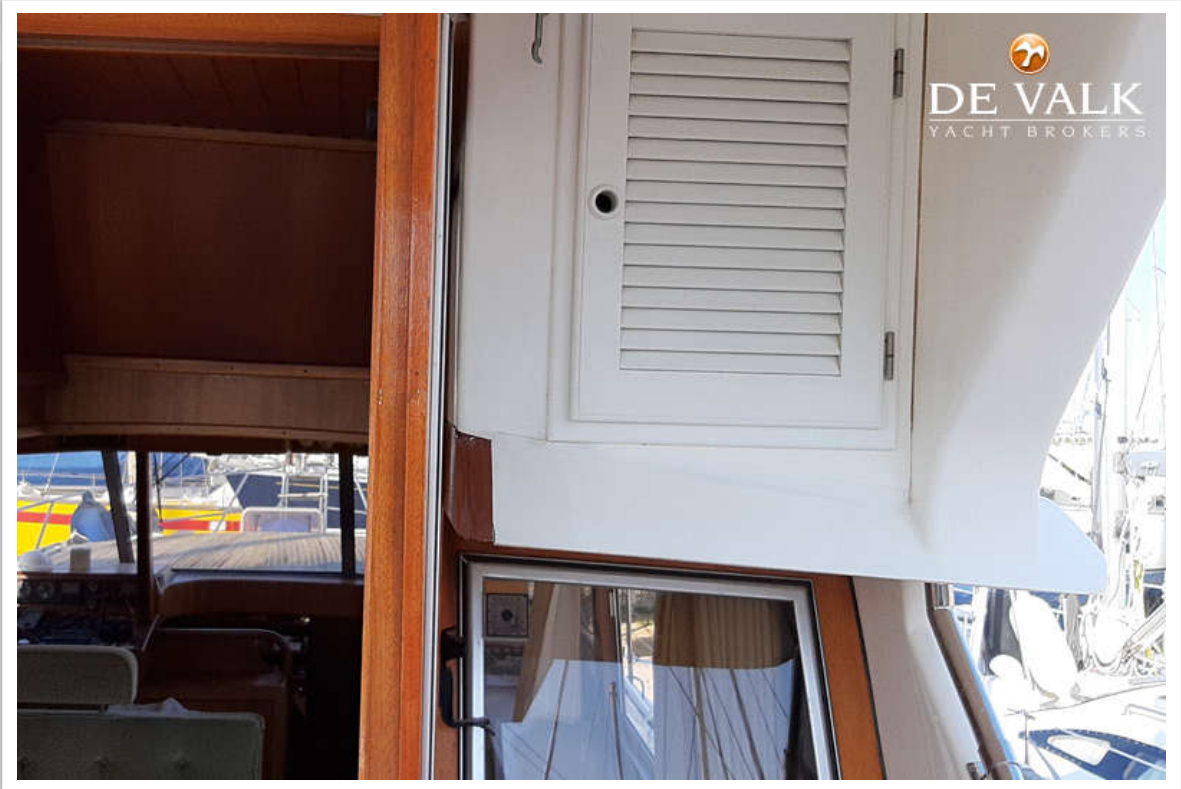
BUETZFLETH 48,5



BUETZFLETH 48,5



BUETZFLETH 48,5



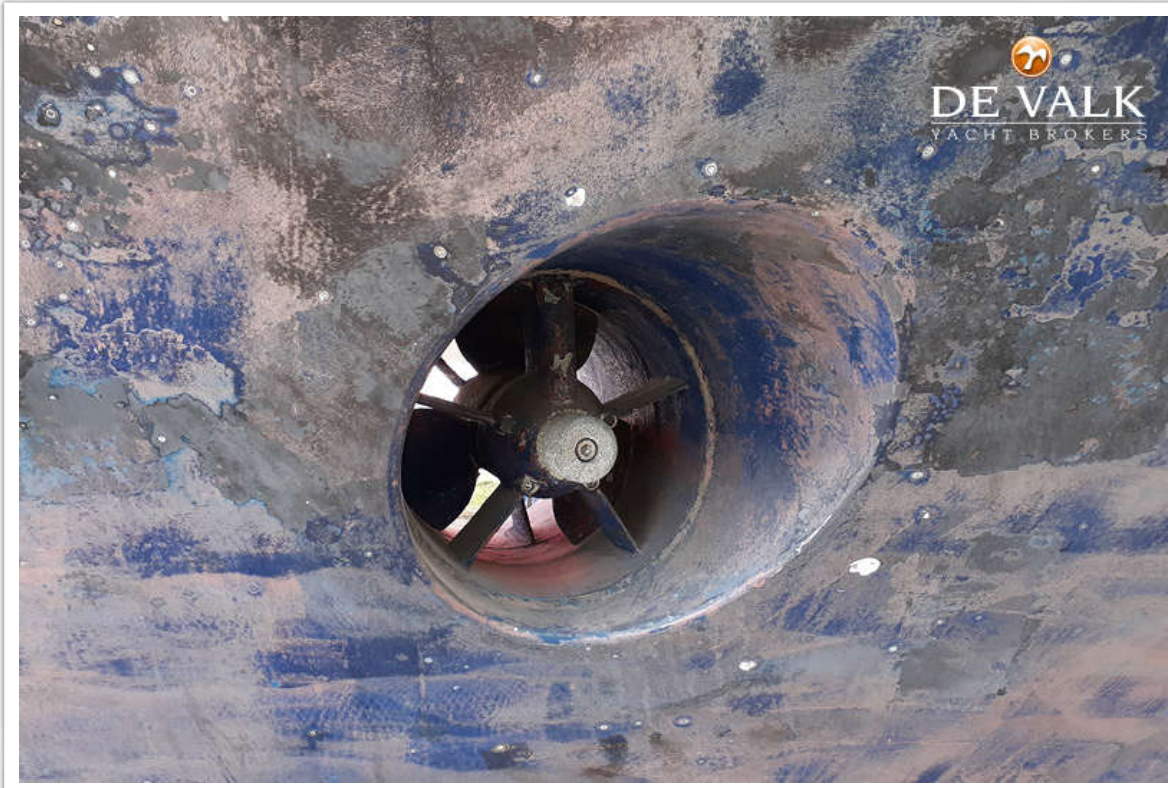
BUETZFLETH 48,5



BUETZFLETH 48,5



BUETZFLETH 48,5



BUETZFLETH 48,5



BUETZFLETH 48,5



BUETZFLETH 48,5



BUETZFLETH 48,5



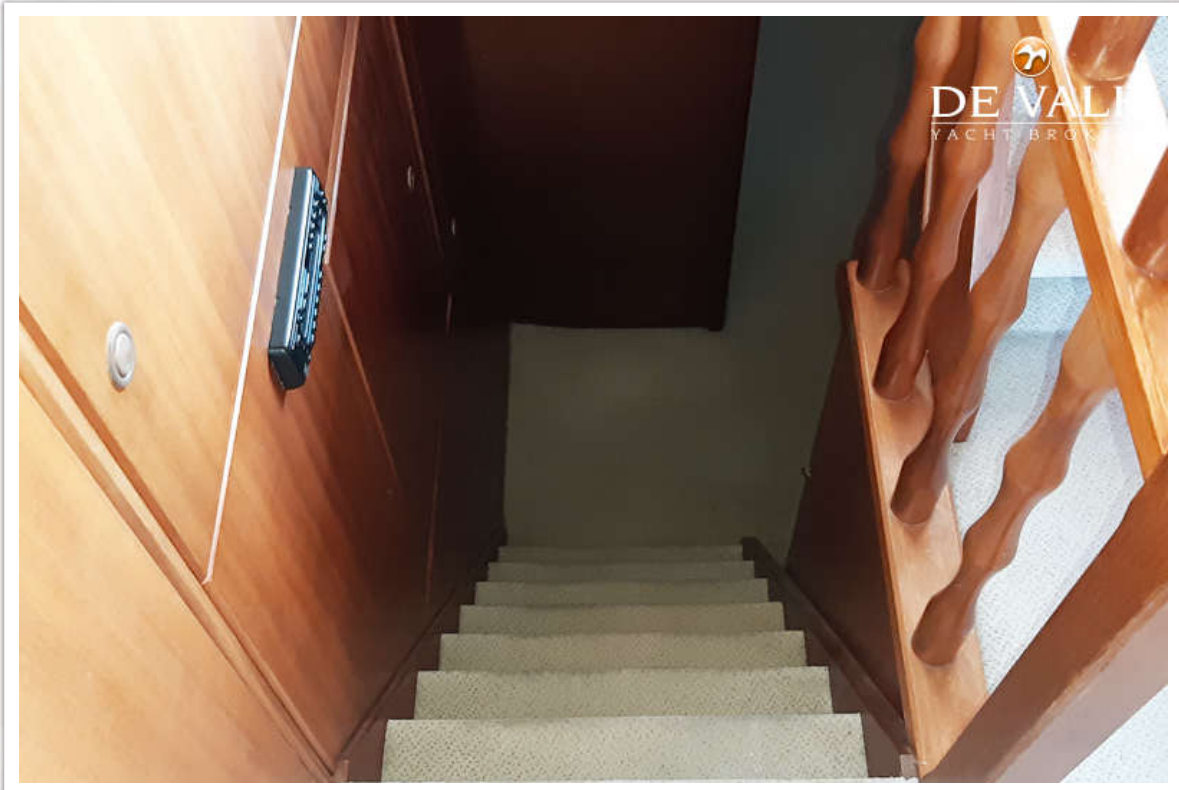
BUETZFLETH 48,5



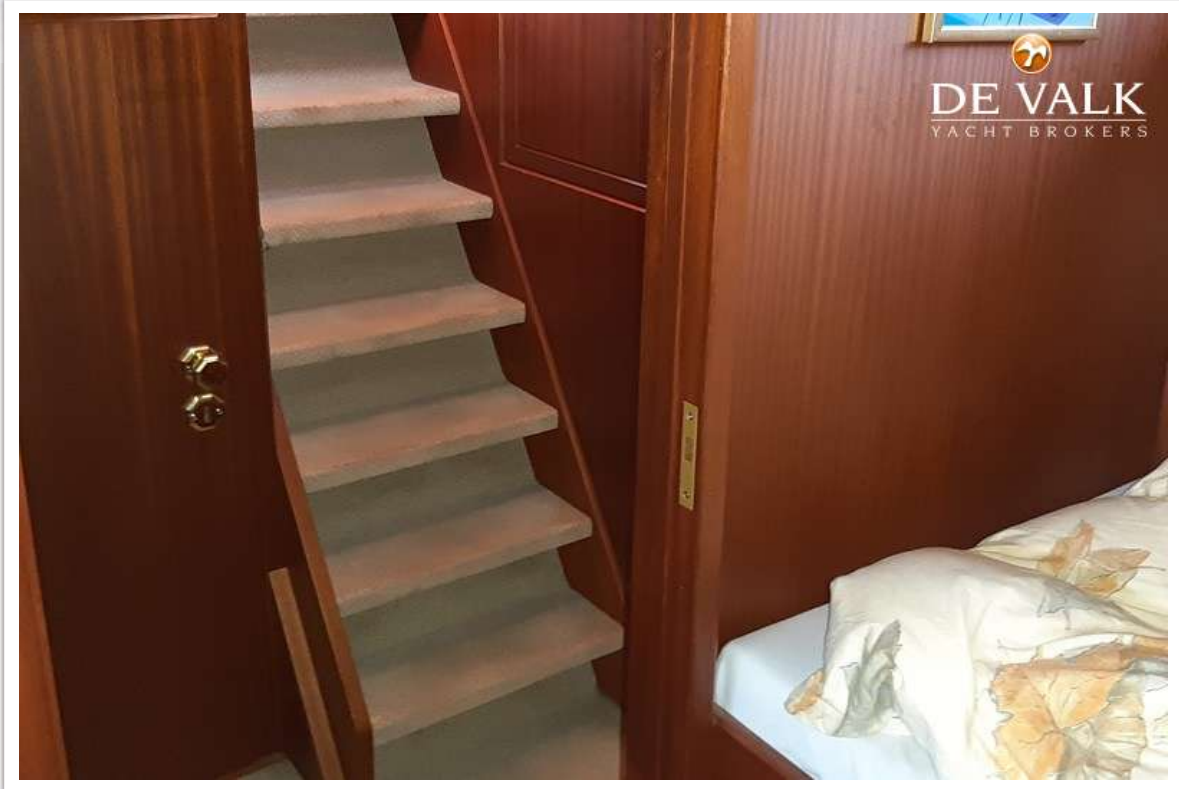
BUETZFLETH 48,5



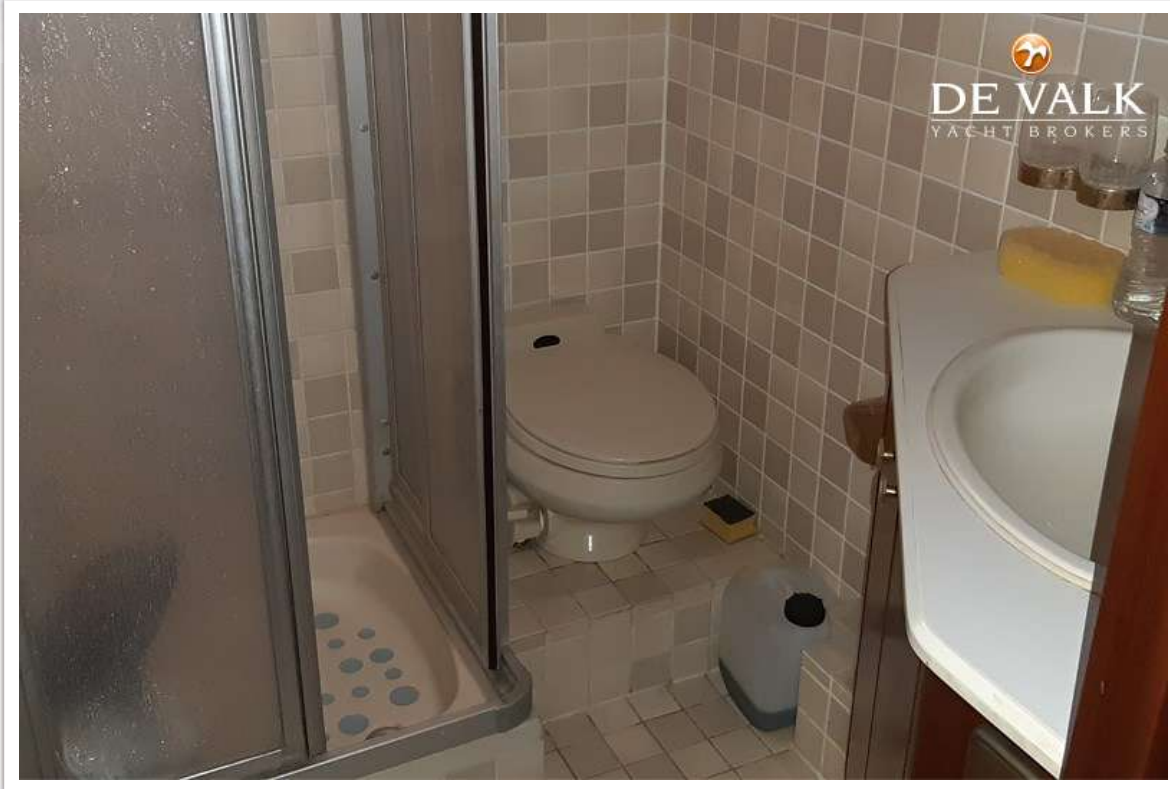
BUETZFLETH 48,5

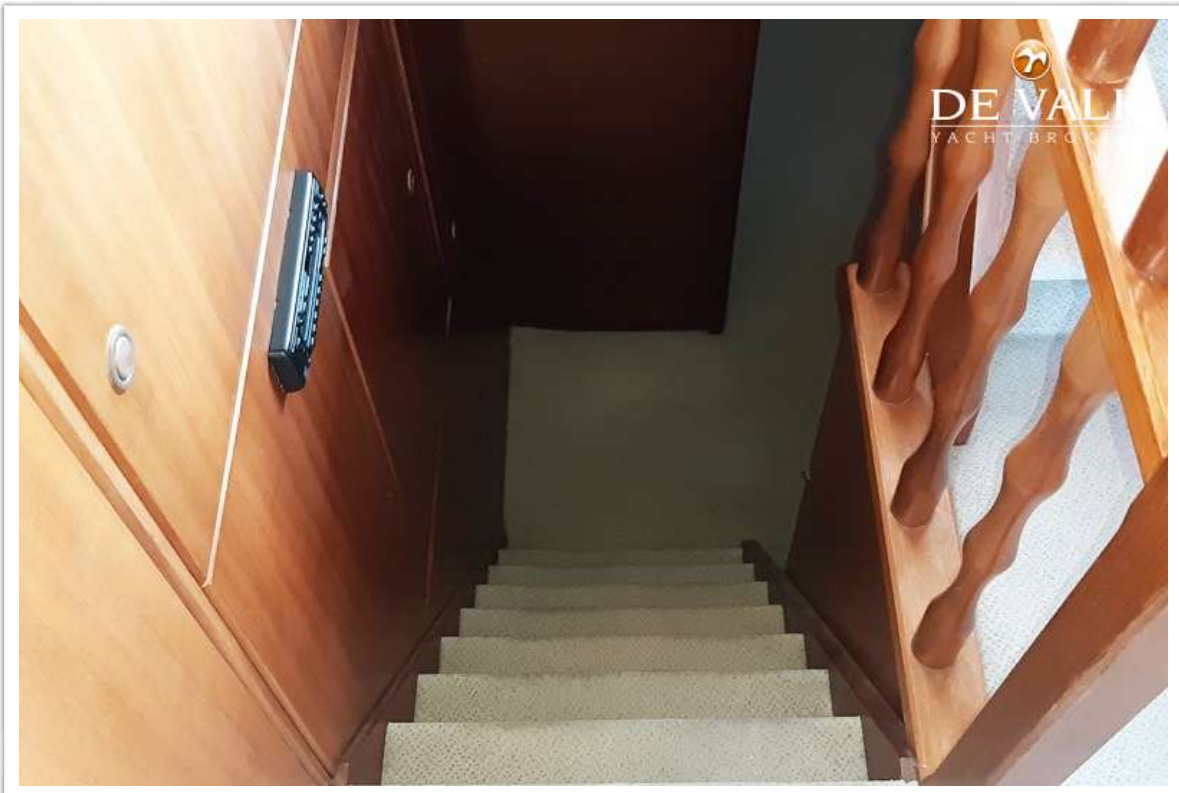
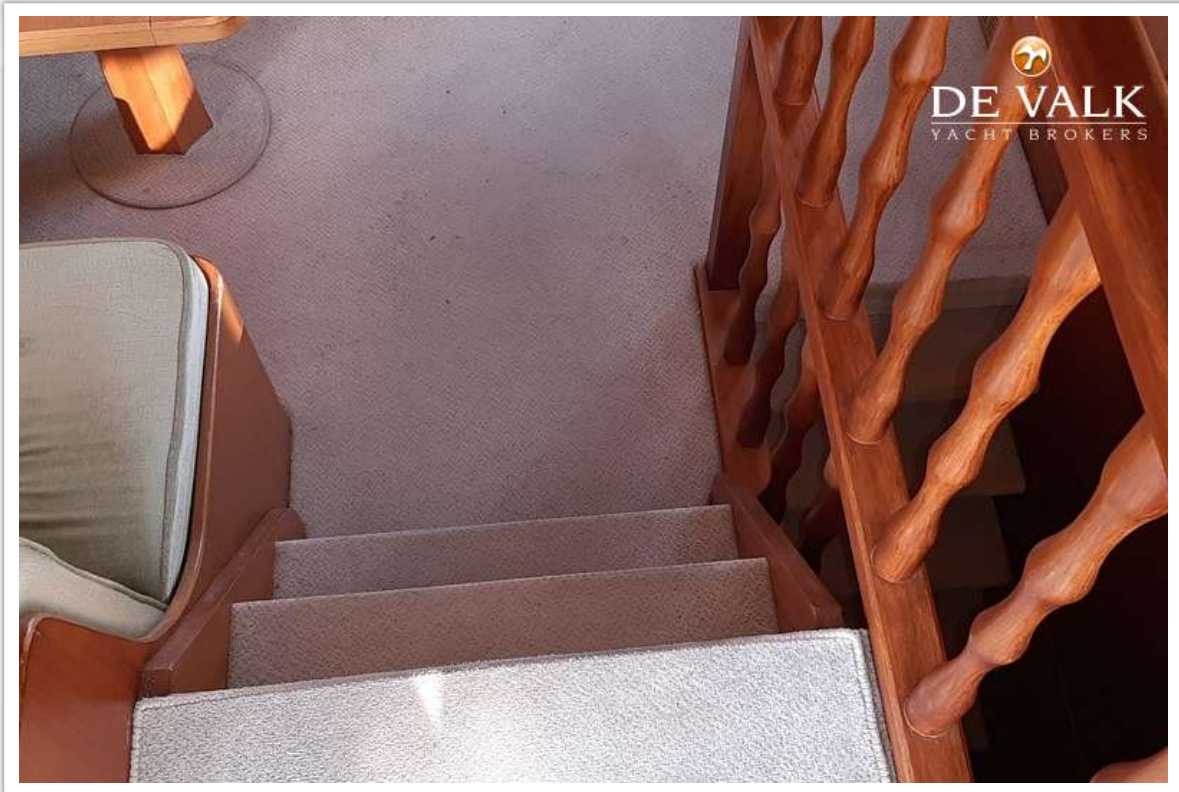


BUETZFLETH 48,5



BUETZFLETH 48,5





BUETZFLETH 48,5



BUETZFLETH 48,5

