



DE VALK
YACHT BROKERS



LAGOON 500



DE VALK
YACHT BROKERS

LAGOON 500

BROKER'S COMMENTS

"Lagoon" conjures an image of cool tranquility. Lagoon 500 is the flagship of the Lagoon's fleet of Catamarans and pioneer of many innovations regarding operation & comfort. On board the Lagoon 500 you won't be a king of performance, but definitely the king of relaxation..

Sofia Iliia-Salvanou

SPECIFICATIONS

| | | | |
|---------------------|-----------------------------|----------------|------------------------------|
| Dimensions | 15.54 x 8.53 x 2.85 (m) | Builder | Chantier CNB, France |
| Built | 2009 | Cabins | 4 |
| Material | GRP | Berths | 8 |
| Engine(s) | 2 x YANMAR 4JH4A-TCE diesel | Hp/Kw | 2 x 150.00 (hp), 110.25 (kw) |
| Asking price | sold (VAT) | Lying | at sales office |

CONTACT

| | | | |
|---------------------|---|------------------|--------------------|
| Sales office | De Valk Corfu | Telephone | (+30) 266 111 8095 |
| Address | New Port of Corfu, near Gouvia Marina 490 83 Corfu Greece | E-mail | corfu@devalk.nl |

DISCLAIMER

These particulars are given in good faith as supplied but cannot be guaranteed.



GENERAL

| | |
|-----------------------------------|--------------------------------------|
| Model | LAGOON 500 |
| Type | catamaran sailing yacht |
| LOA (m) | 15,54 |
| LWL (m) | 14,93 |
| Beam (m) | 8,53 |
| Draft (m) | 2,85 |
| Headroom (m) | 2,20 |
| Year built | 2009 |
| Builder | Chantier CNB, France |
| Country | France |
| Designer | M. van Peteghem & V. Lauriot Prevost |
| Displacement (t) | 17 |
| CE norm | A |
| Hull material | GRP |
| Hull colour | white |
| Superstructure material | GRP |
| Deck material | GRP |
| Deck finish | non-skid moulded in |
| Superstructure deck finish | non-skid moulded in |
| Cockpit deck finish | non-skid moulded in |
| Antifouling (year) | 2018 |
| Window material | tempered glass |
| Deckhatch | Lewmar 14x |
| Portholes | |
| Insulation | foam |
| Flybridge | yes |
| Flybridge cover | yes |
| Flybridge cockpit cover | yes |
| Flybridge suncover | yes |
| Fuel tank (litre) | 2X 500 |



LAGOON 500

| | |
|------------------------------|-------------------------------|
| Level indicator (fuel tank) | yes |
| Freshwater tank (litre) | 2X 500 |
| Level indicator (freshwater) | yes |
| Blackwater tank extraction | 4 X 90 Two of them new (2020) |
| Wheel steering | |
| Flybridge helm position | |
| Emergency tiller | yes |

ACCOMMODATION

| | |
|-------------------------------|----------------------------|
| Cabins | 4 |
| Berths | 8 |
| Crew cabin | X 2 single |
| Crew berths | 2 |
| Layout | yes |
| Floor | woodprint |
| Open cockpit | yes |
| Aft deck | yes |
| Deck saloon | yes |
| Saloon | yes |
| Headroom saloon (m) | 2,20 |
| Heating | 2 units Webasto |
| Air-conditioning | 6 UNITS-Cruisair 48000 BTU |
| Navigation center | yes |
| Chart table | yes |
| Aft Cabin | yes |
| Dinette | yes |
| Dinette to convert into berth | yes |
| Sliding door to aft deck | yes |
| Galley | yes |
| Countertop | corian |
| Sink | stainless steel |



LAGOON 500

| | |
|-------------------------|--------------------------|
| Cooker | calor gas Gas plates |
| Oven | yes |
| Gas alarm | yes |
| Fridge | 2 X 100L stainless steel |
| Freezer | 100L stainless steel |
| Hot water system | |
| Water pressure system | electrical |
| Manual and/or foot pump | yes |
| Dishwasher | 12-person |
| Kettle | yes |
| Ice maker | yes |
| Coffee maker | yes |
| Crockery | yes |
| Owners cabin | double bed |
| Bed length (m) | 2,10 |
| Wardrobe | hanging/drawers/shelves |
| Bathroom | en suite |
| Toilet | en suite |
| Toilet system | electric |
| Wash basin | in the bathroom |
| Shower | en suite |
| Guest cabin 1 | double bed |
| Bed length (m) | 2,10 |
| Wardrobe | hanging/drawers/shelves |
| Bathroom | en suite |
| Toilet | en suite |
| Toilet system | electric |
| Wash basin | in the bathroom |
| Shower | |
| Guest cabin 2 | double bed |
| Bed length (m) | 2,10 |
| Wardrobe | hanging/drawers/shelves |



LAGOON 500

| | |
|------------------------------------|-------------------------|
| Bathroom | en suite |
| Toilet | en suite |
| Toilet system | electric |
| Wash basin | in the bathroom |
| Shower | |
| Guest cabin 3 | double bed |
| Bed length (m) | 2,10 |
| Wardrobe | hanging/drawers/shelves |
| Bathroom | yes |
| Toilet | en suite |
| Toilet system | electric |
| Wash basin | in the bathroom |
| Shower | en suite |
| Crew cabin(s) | X 2 single |
| Bathroom (crew) | yes |
| Toilet (crew) | yes |
| Toilet system | manual |
| Shower (crew) | yes |
| Washing machine/dryer combi | yes |
| Flybridge | yes |

MACHINERY

| | |
|----------------------------|-----------|
| No of engines | 2 |
| Make | YANMAR |
| Type | 4JH4A-TCE |
| HP | 150 |
| kW | 110,25 |
| Fuel | diesel |
| Year installed | 2009 |
| Maximum speed (kn) | 12 |
| Cruising speed (kn) | 8 |



LAGOON 500

| | |
|-------------------------|---------------------------------------|
| Consumption (l/hr) | 6 |
| Range (nm) | 1000 |
| Engine hours | 2750 |
| Engine cooling system | seawater |
| Drive | sail-drive |
| Saildrive seal | yes |
| Engine controls | electrical |
| Gearbox | hydraulic |
| Propeller type | folding |
| Propeller blades | 2 |
| Manual bilge pump | yes |
| Electric bilge pump | yes |
| Bilge alarm | yes |
| Electrical installation | yes |
| Generator | ONAN |
| Running hours generator | yes |
| Batteries | 2019 |
| Start battery | 12 V |
| Service battery | 12V |
| Electric engine battery | 2x 12V |
| Generator battery | 12V |
| Battery charger | 12V |
| Inverter | 12V/220V/180W |
| Shorepower | with cable |
| Auto positioning system | yes |
| Watermaker | Schenker Modular 100 new (July 2020). |

NAVIGATION

| | |
|----------------------|-----|
| Compass | yes |
| Compass on flybridge | yes |
| Depth sounder | yes |



LAGOON 500

| | |
|--------------------------|----------------------------|
| Depth sounder/log | yes |
| Log | yes |
| Windset | yes |
| Repeater | yes |
| VHF | yes |
| VHF handheld | yes |
| Autopilot | Smart Controller Raymarine |
| Radar | yes |
| Radar/GPS/plotter | Raymarine E120 |
| Weather receiver | yes |
| Navtex | yes |
| Personal computer | yes |
| PC connection | yes |
| Wifi antenna | yes |
| Electronic chart(s) | yes |
| AIS receiver | yes |
| AIS transponder | yes |
| Radio receiver | yes |
| Transmitter | yes |
| EPIRB | yes |
| Personal MOB transmitter | NEW |
| Navigation lights | yes |
| Loudhailer | yes |

EQUIPMENT

| | |
|------------------|---|
| Fixed hardtop | yes |
| Bimini | yes |
| Winter cover | yes |
| Window cover | FOR OUTSIDE WINDOWS BUT NOT FOR THE HATCHES |
| Cockpit cushions | yes |
| Cockpit table | yes |



LAGOON 500

| | |
|----------------------------|-----------------------------|
| Cockpit chairs | X 2 |
| Bathing platform | X 2 |
| Boarding ladder | aluminum X 2 |
| Gangway | yes |
| Deck shower | X 2 |
| Anchor | Rocna 55 Kg |
| Anchor chain | yes |
| Anchor 2 | 35 Kg |
| Anchor chain | yes |
| Chain counter | Electronic |
| Windlass | electrical Lewmar 12V |
| Deck wash | yes |
| Dinghy | 5 m |
| Outboard | Honda 50 Hp |
| Outboard support | yes |
| Davits | |
| Davits controls | |
| Sea railing | |
| Grab rail (superstructure) | stainless steel |
| Life raft | valise (or bag) |
| Life raft (pers) | 12 |
| Lifejackets | yes |
| Lifebuoy | yes |
| Rope cutter | yes |
| Horn | |
| Binocular | yes |
| Radar reflector | yes |
| Fenders | yes |
| Mooring lines | yes |
| Spare parts | yes |
| Tools | yes |
| TV | Flatscreen X 5 , LG LCD 26" |



| | |
|-----------------------------|----------------|
| Satellite | yes |
| TracVision ball | yes |
| Radio | yes |
| Radio-cd player | yes |
| DVD player | Home Cinema LG |
| Surround Sound System | yes |
| Cockpit speakers | yes |
| Speakers in salon | yes |
| Clock - barometer | yes |
| Fire extinguisher | yes |
| Latest extinguisher survey | 2018 |
| Extinguisher in engine room | Automatic |

RIGGING

| | |
|-------------------------|------------------------|
| Rigging | |
| Standing rigging | |
| Material mast | aluminium |
| Spreaders | yes |
| Keel stepped mast | To reach the Boom only |
| Mainsail | Full Battened |
| Mainsail cover | Lazy Jack |
| Fully battened mainsail | yes |
| Genoa | yes |
| Genoa furler | yes |
| Gennaker | 145 m2 |
| Reefing System | |
| Boomvang | Sparcraft |
| Primary sheet winch | yes |
| Secondary sheet winch | yes |
| Genoa sheetwinches | yes |
| Halyard winches | yes |



Reefing winch

yes

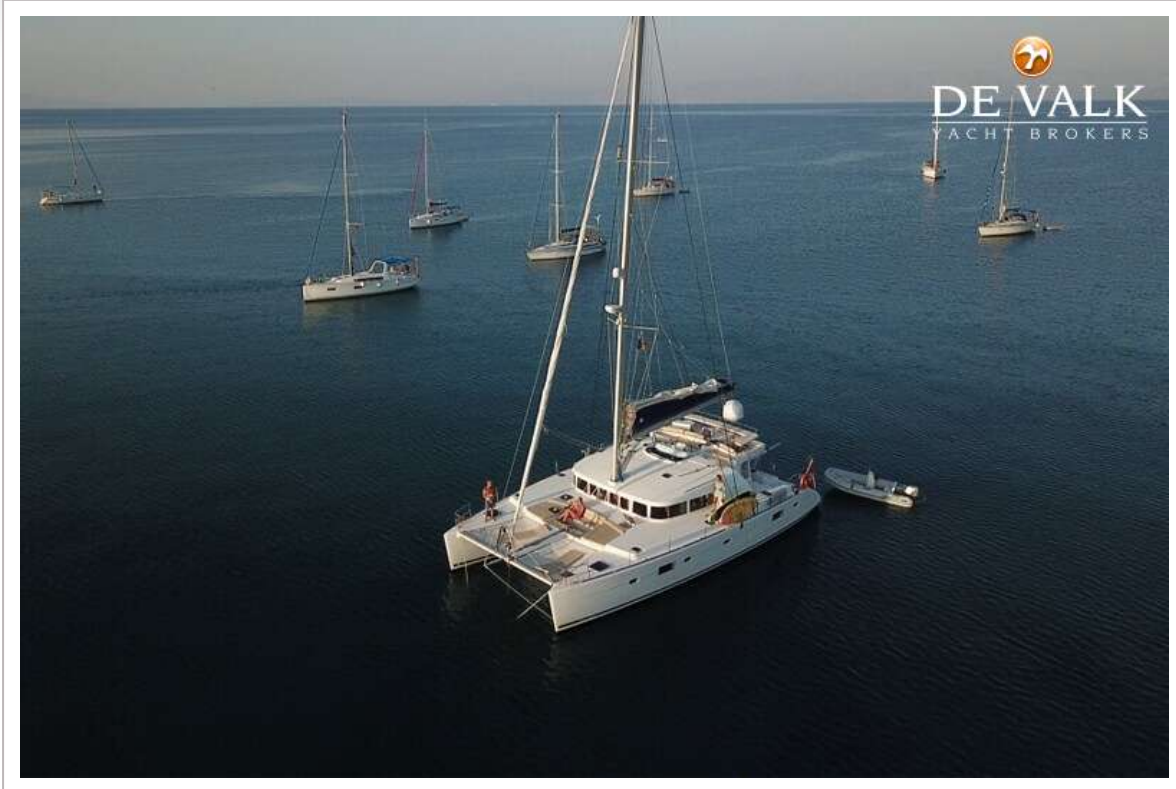
Multifunctional winches



LAGOON 500



LAGOON 500



LAGOON 500



LAGOON 500



LAGOON 500



LAGOON 500



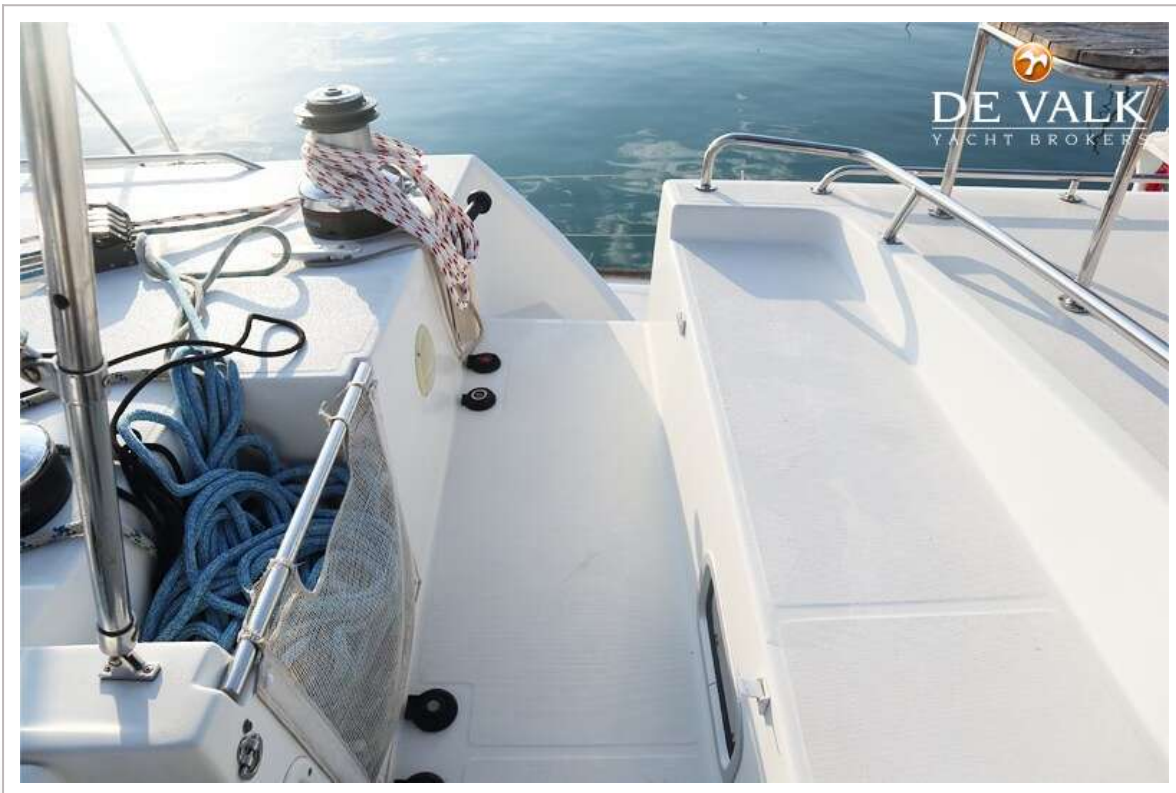
LAGOON 500



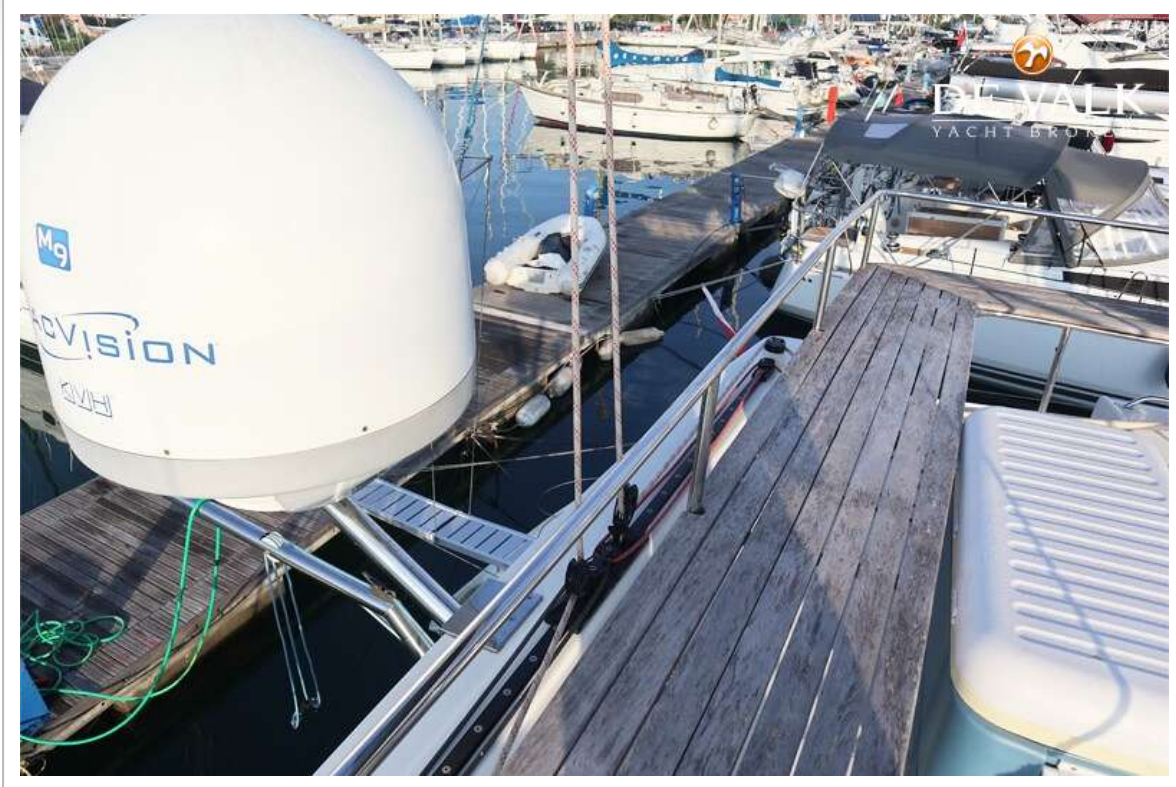
LAGOON 500



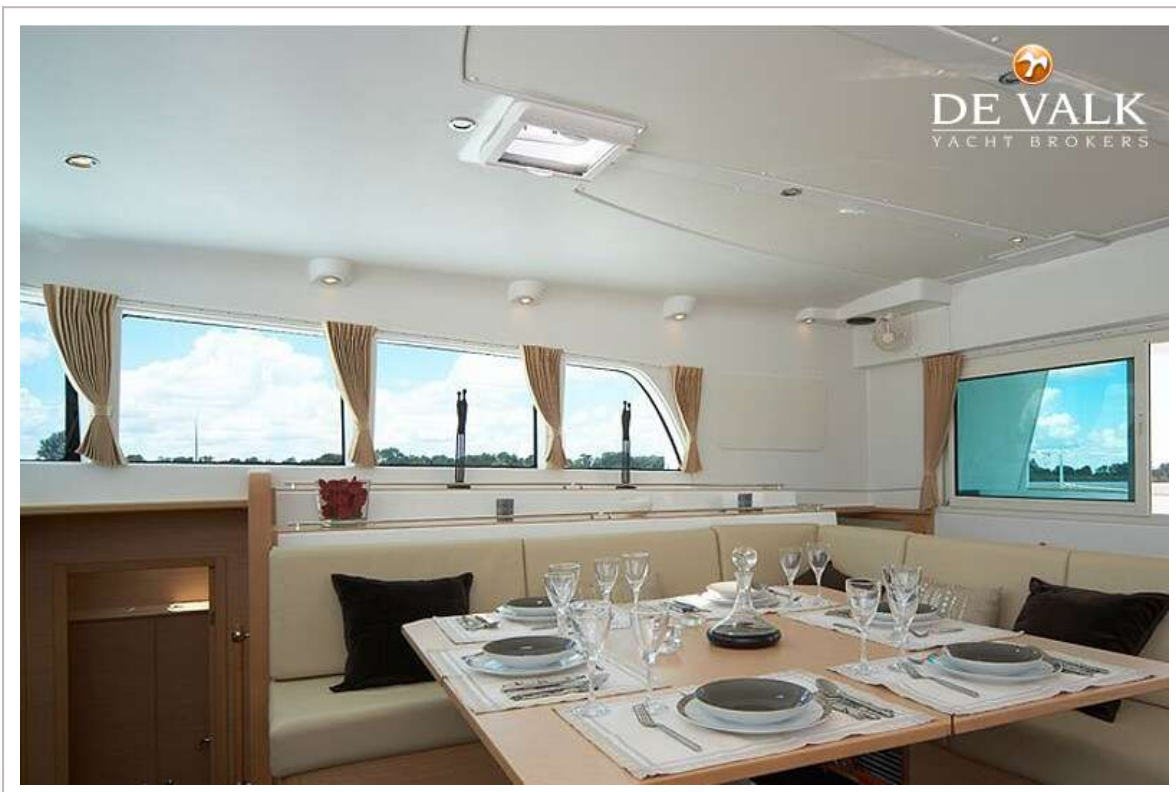
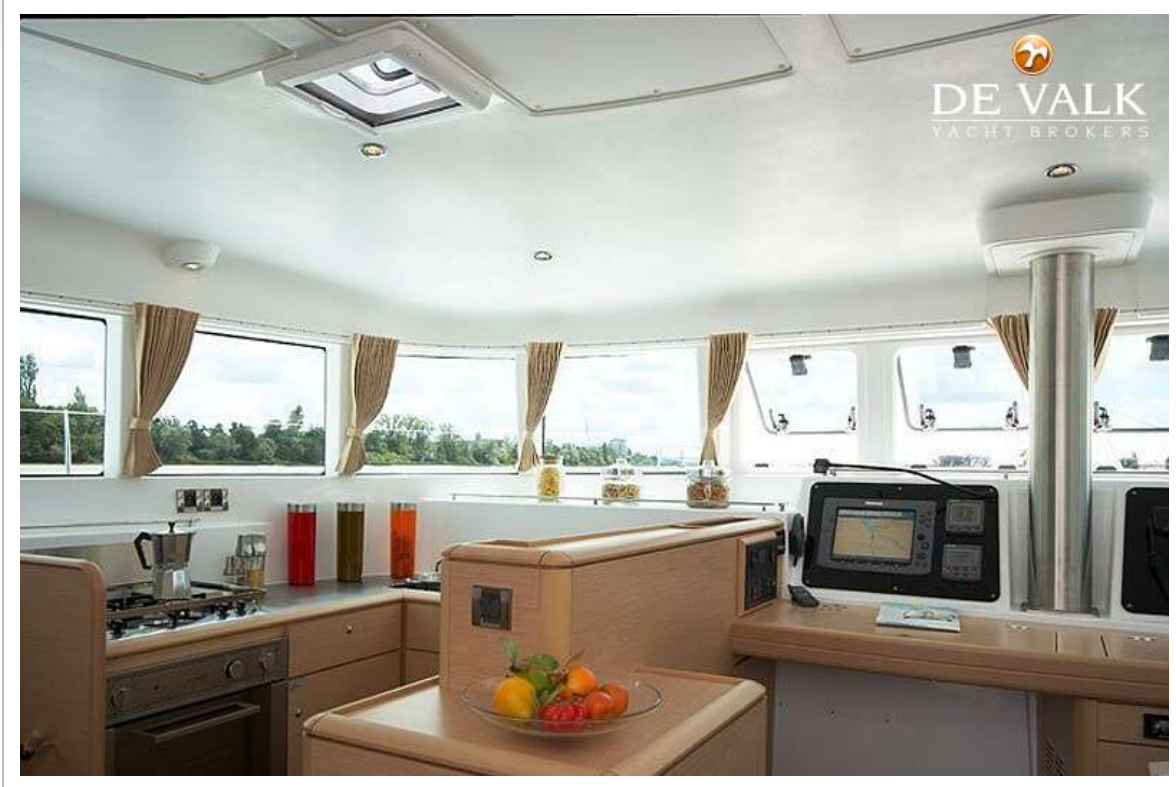
LAGOON 500



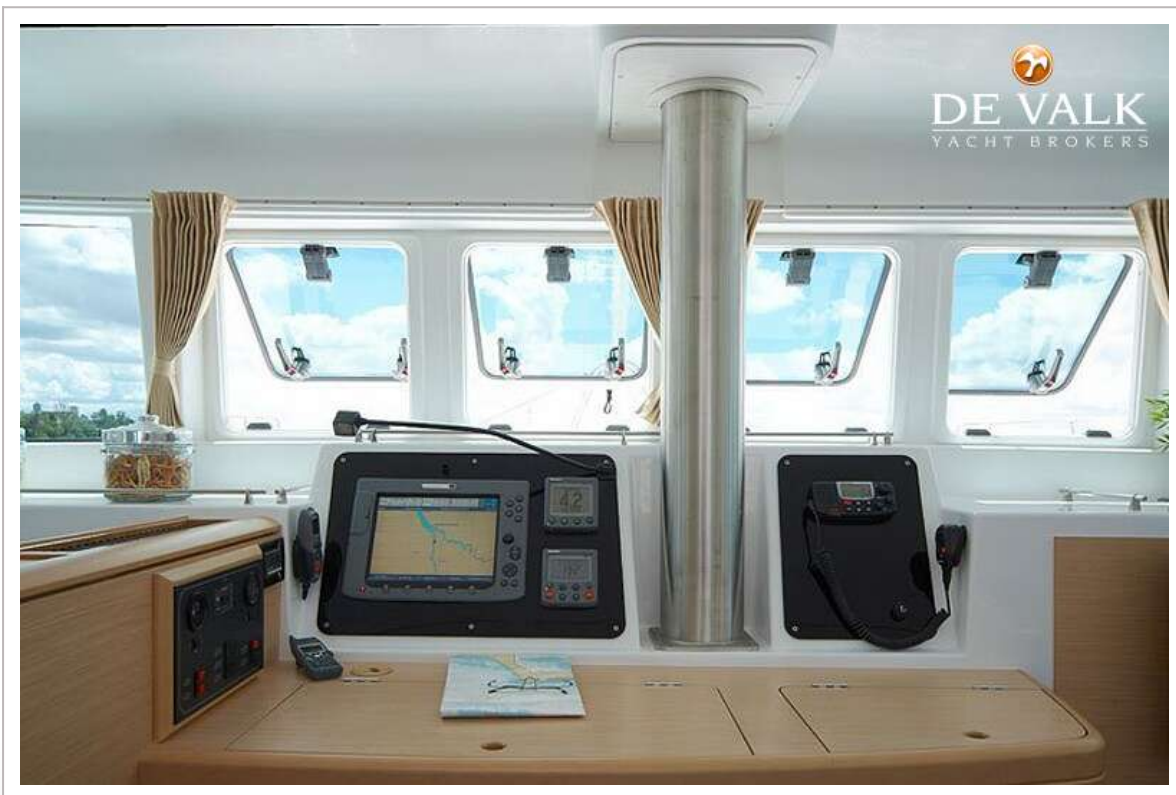
LAGOON 500



LAGOON 500



LAGOON 500



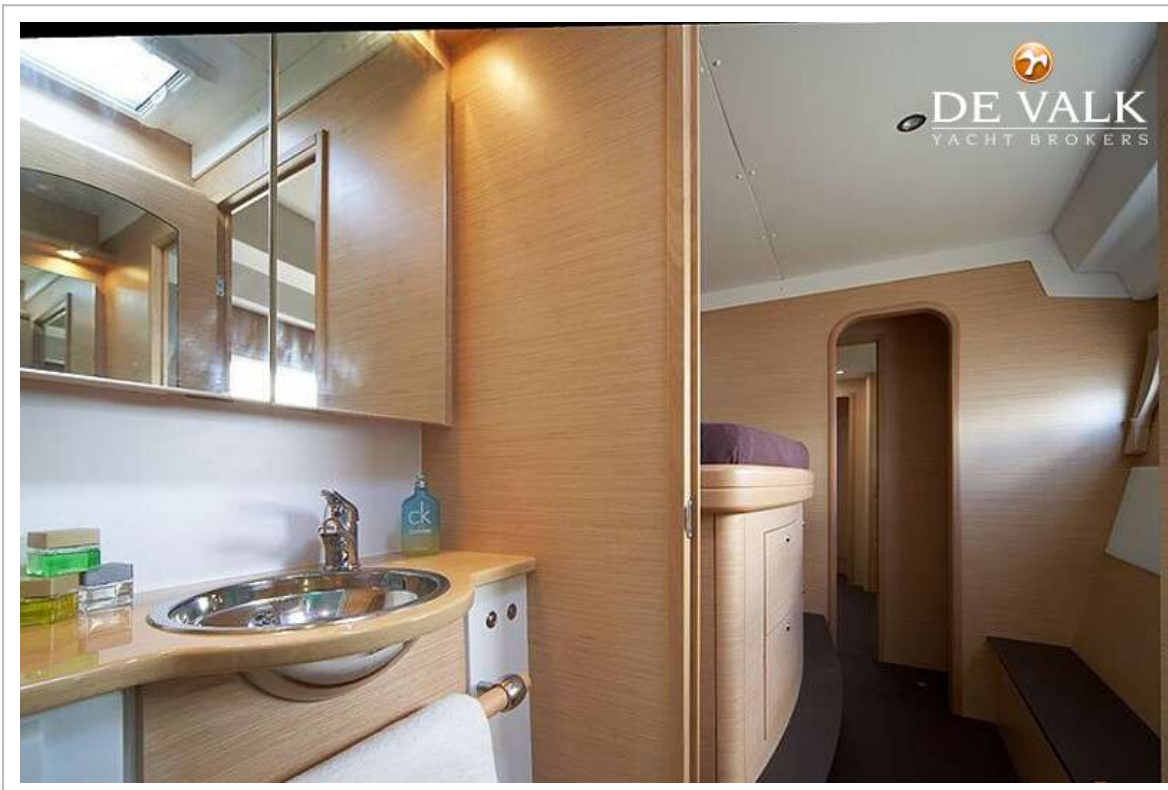
LAGOON 500



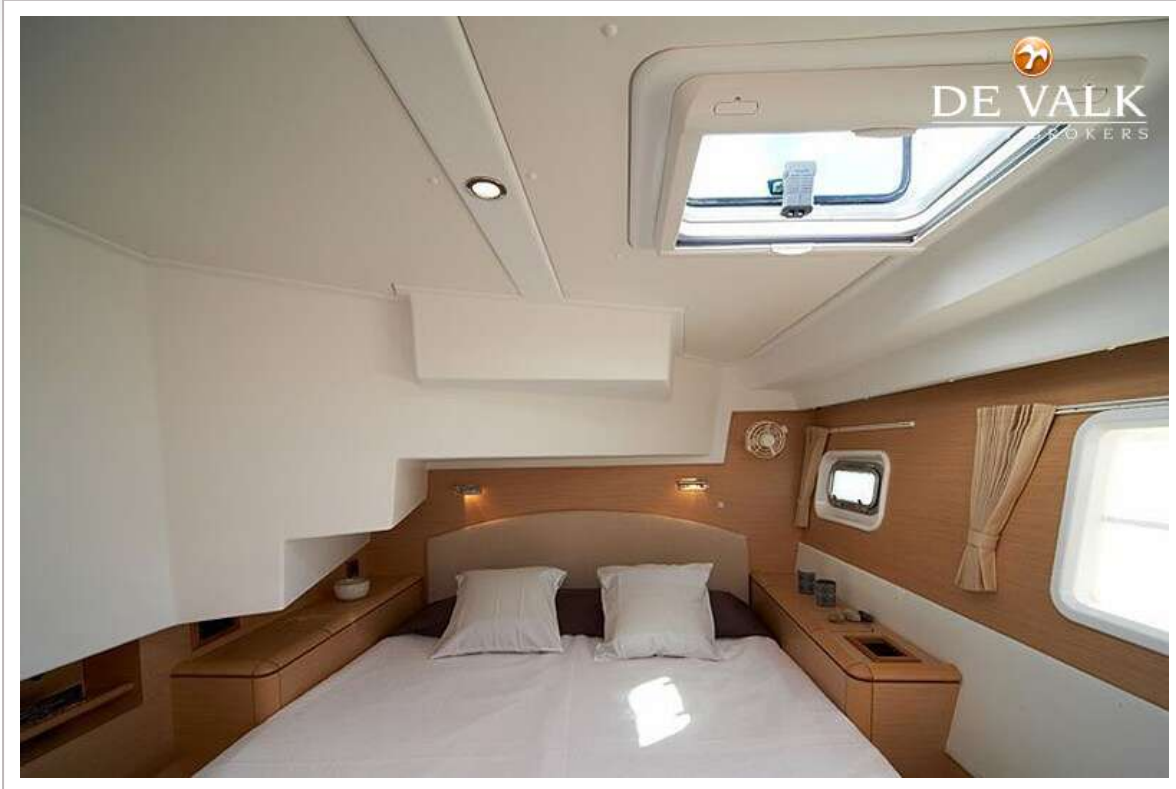
LAGOON 500



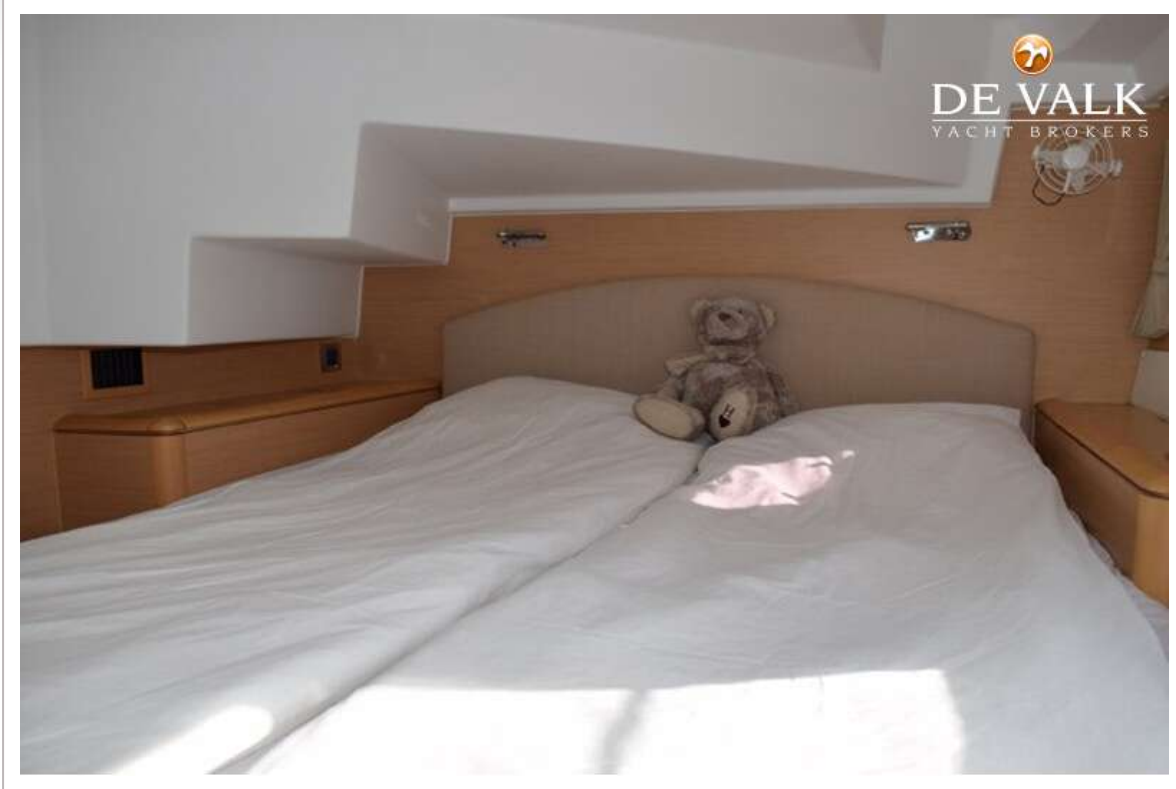
LAGOON 500



LAGOON 500



LAGOON 500



LAGOON 500



LAGOON 500

