



GIB SEA 442 MASTER

GIB SEA 442 MASTER

BROKER'S COMMENTS

A very nice example of the spacious Gib'Sea 442 Master. Ideal for a comfortable stay on board because of the three spacious cabins and two bathrooms. The saloon is very accessible because of her headroom of 1.95m. This Gib'Sea 442 Master got a new engine in 2007, is well equipped with heating, boiler, refrigerator, electric windlass, autopilot, etc. This Gib'Sea 442 Master is good and easy to sail because of her electric winches which can be operated from the cockpit. Because of her bow thruster she is also easy to manoeuvre in the marinas.

Jochem Heijermans

SPECIFICATIONS

Dimensions	13.65 x 4.05 x 1.60 (m)	Builder	Gilbert Marine
Built	1989	Cabins	3
Material	GRP	Berths	
Engine(s)	1 x Vetus M455A602A diesel	Hp/Kw	52.00 (hp), 38.22 (kw)
Asking price	sold (VAT)	Lying	elsewhere / Not at sales office

CONTACT

Sales office	De Valk Belgium	Telephone	+32 586 80 218
Address	1401 PT Nieuwpoort BE	E-mail	belgium@devalk.nl

DISCLAIMER

These particulars are given in good faith as supplied but cannot be guaranteed.



GENERAL

Model	GIB SEA 442 MASTER
Type	sailing yacht
LOA (m)	13,65
Beam (m)	4,05
Draft (m)	1,60
Air draft (m)	19,00
Headroom (m)	1,95
Year built	1989
Builder	Gilbert Marine
Country	France
Displacement (t)	9,5
CE norm	A
Hull material	GRP
Hull colour	blue
Hull shape	round-bilged
Keel type	fin keel
Superstructure material	GRP
Rubbing strake	stainless steel
Deck material	GRP
Deck finish	teak Inspected (2019)
Superstructure deck finish	non-skid paint
Cockpit deck finish	teak
Dorades	4
Window frame	aluminium
Window material	perspex
Deckhatch	yes
Portholes	aluminium
Mast can be lowered	manual
Fuel tank (litre)	aluminium 250
Fuel tank 2 (litre)	



Level indicator (fuel tank)	yes
Freshwater tank (litre)	aluminium 2x 350
Wheel steering	cable steering
Emergency tiller	yes

ACCOMMODATION

Cabins	3
Interior	oak
Floor	teak and holly
Saloon	yes
Headroom saloon (m)	1.95
Heating	diesel ducted hot air Eberspacher
Heating 2	Diesel Refleks heater
Chart table	yes
Aft Cabin	yes
Dinette	yes
Dinette to convert into berth	2 single in saloon
Opening door to cockpit	yes
Galley	yes
Countertop	plastic
Sink	stainless steel
Cooker	calor gas 2 burner
Oven	yes
Fridge	yes
Freezer	yes
Hot water system	220V + engine
Water pressure system	electrical
Manual and/or foot pump	yes
Crockery	yes
Owners cabin	French bed
Bed length (m)	1.95 x 1.30



Wardrobe	drawers and shelves
Bathroom	en suite
Toilet	en suite
Toilet system	manual
Wash basin	in the bathroom
Shower	en suite
Guest cabin 1	double bed
Bed length (m)	1.95 x 1.30
Wardrobe	drawers and shelves
Bathroom	shared
Toilet	shared
Toilet system	manual
Wash basin	in the bathroom
Shower	shared
Guest cabin 2	double bed
Bed length (m)	1.95 x 1.30
Wardrobe	drawers and shelves
Wardrobe	drawers and shelves

MACHINERY

No of engines	1
Make	Vetus
Type	M455A602A
HP	52
kW	38,22
Fuel	diesel
Year installed	2007
Engine cooling system	freshwater heat exchanger
Drive	shaft
Engine controls	bowden cable
Gearbox	mechanical



Bowthruster	electric Vetus 6KW
Exhaust	watercooled
Propeller type	fixed Maxprop
Propeller blades	3
Propeller shaft material	stainless steel
Electric bilge pump	yes
Electrical installation	12v/220v
Batteries	yes
Start battery	12v/70ah (2018)
Service battery	6x 12v/220ah (2018)
Battery monitor	yes
Battery charger	Mastervolt 12v/60ah

NAVIGATION

Compass	Plastimo
Electric compass	Raymarine ST7001+
Windset	Autohelm
Repeater	Radar Raymarine RL70
VHF	Navicom RT 6500
Autopilot	Raymarine ST7001+
Wind vane steering install.	Autohelm
Rudder angle indicator	yes
Radar	2x Raymarine RL70
GPS	Raymarine RN300
Navigation lights	yes

EQUIPMENT

Sprayhood with grab rail	yes
Cockpit table	(2019)
Bathing platform	yes
Boarding ladder	stainless steel



Deck shower	yes
Anchor	Danforth
Anchor chain	50m
Windlass	electrical
Capstan	yes
Sea railing	wire
Grab rail (superstructure)	wood
Railing side opening gates	yes
Pushpit	yes
Pulpit	yes
Safety lines on deck	yes
Fenders	yes
Mooring lines	yes
TV	LG
Radio	Sony
Surround Sound System	Bang & Olufsen
Speakers in salon	yes
Clock - barometer	yes

RIGGING

Rigging	sloop
Standing rigging	wire
Brand mast	Francespar
Material mast	aluminium
Spreaders	yes
Mainsail	(2008)
Genoa	Inspected (2008)
Cutter furler	Profurl electric
Gennaker	yes
Reefing System	main in-mast furling
Backstay adjuster	mechanical



Boomvang	mechanical
Primary sheet winch	2x Lewmar OP1 (1x electric)
Secondary sheet winch	Barient 24
Genoa sheetwinches	2x Lewmar 58 electric
Gennaker pole	aluminium 2x



GIB SEA 442 MASTER



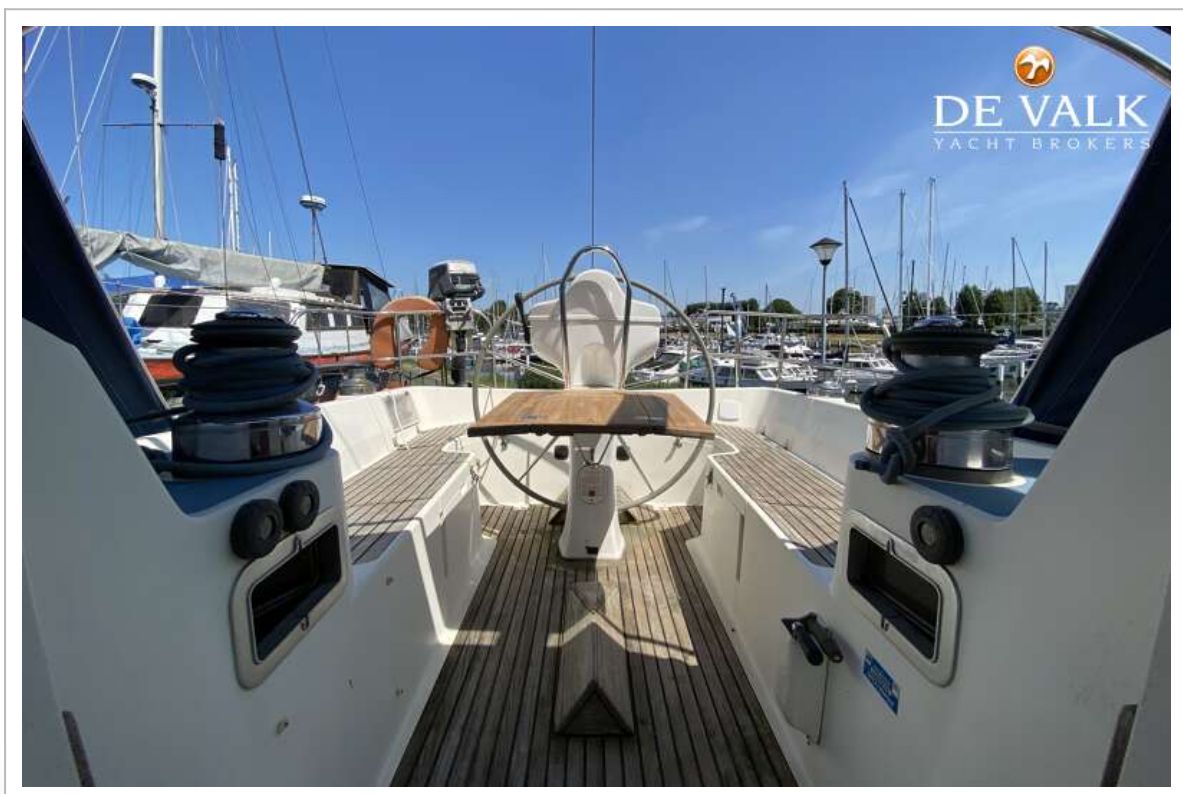
GIB SEA 442 MASTER



GIB SEA 442 MASTER



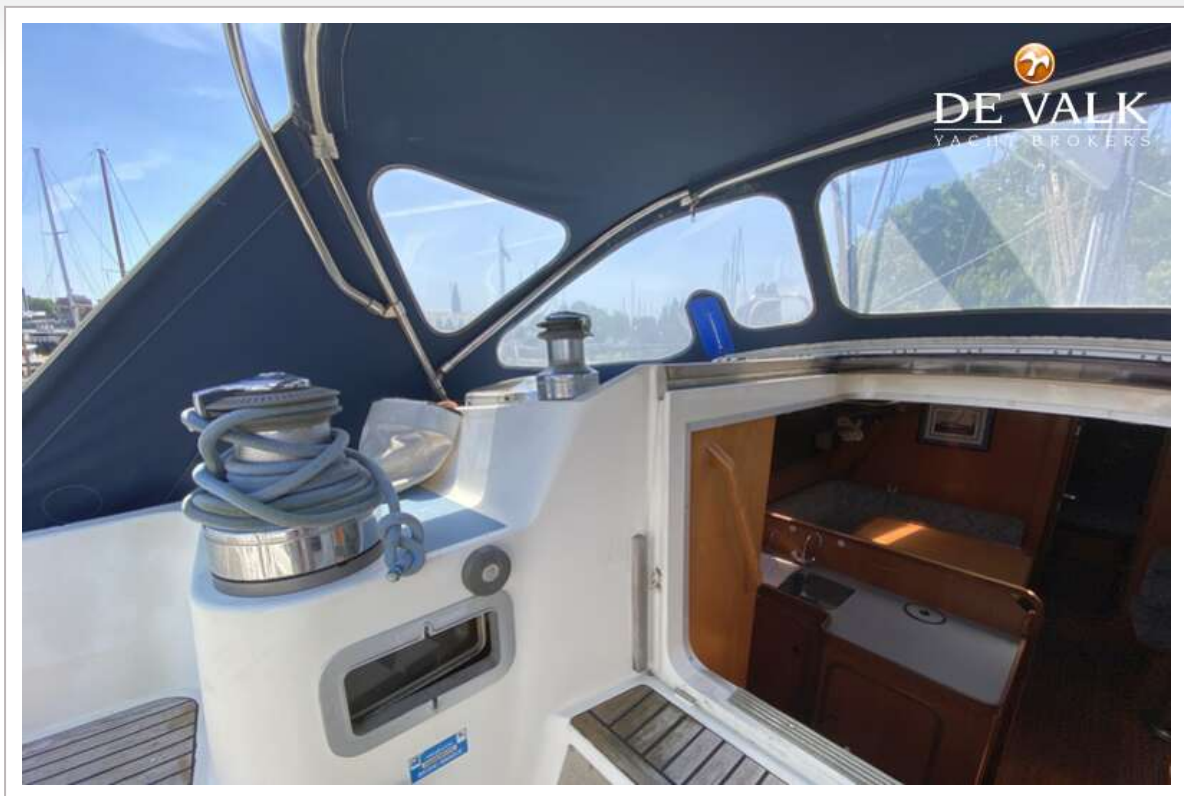
GIB SEA 442 MASTER



GIB SEA 442 MASTER



GIB SEA 442 MASTER



GIB SEA 442 MASTER



GIB SEA 442 MASTER



GIB SEA 442 MASTER



GIB SEA 442 MASTER



GIB SEA 442 MASTER



GIB SEA 442 MASTER



GIB SEA 442 MASTER



GIB SEA 442 MASTER



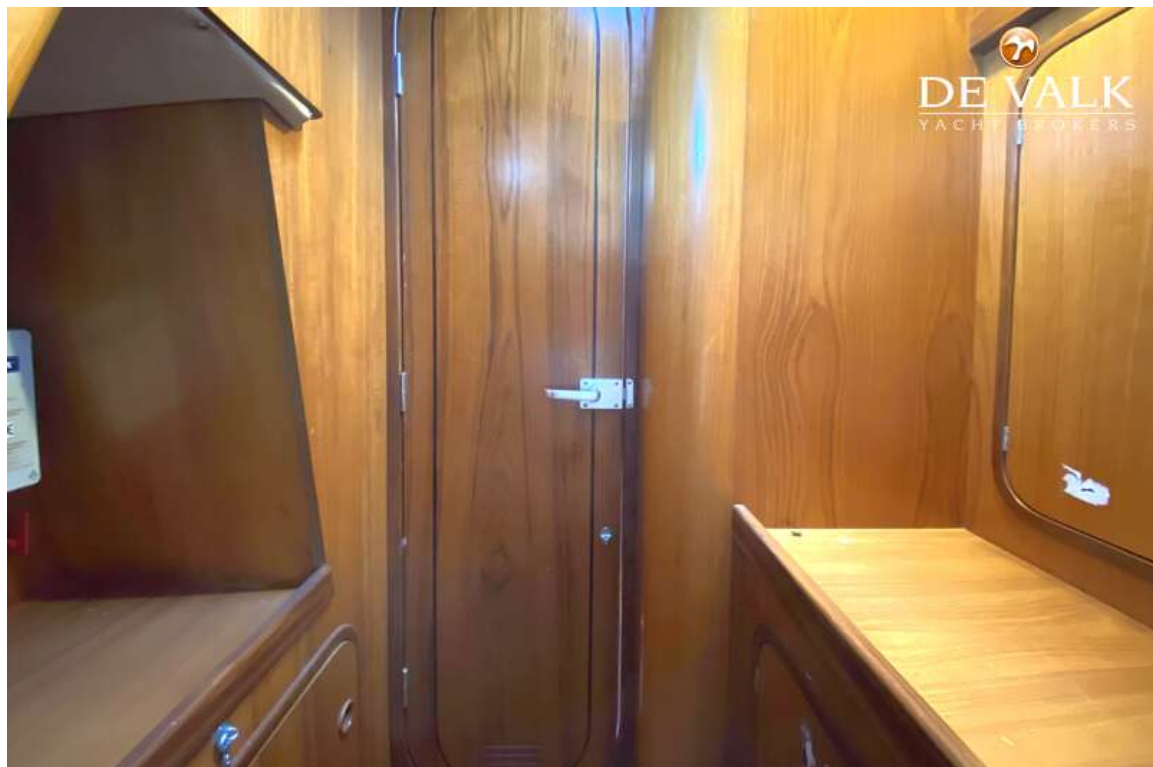
GIB SEA 442 MASTER



GIB SEA 442 MASTER



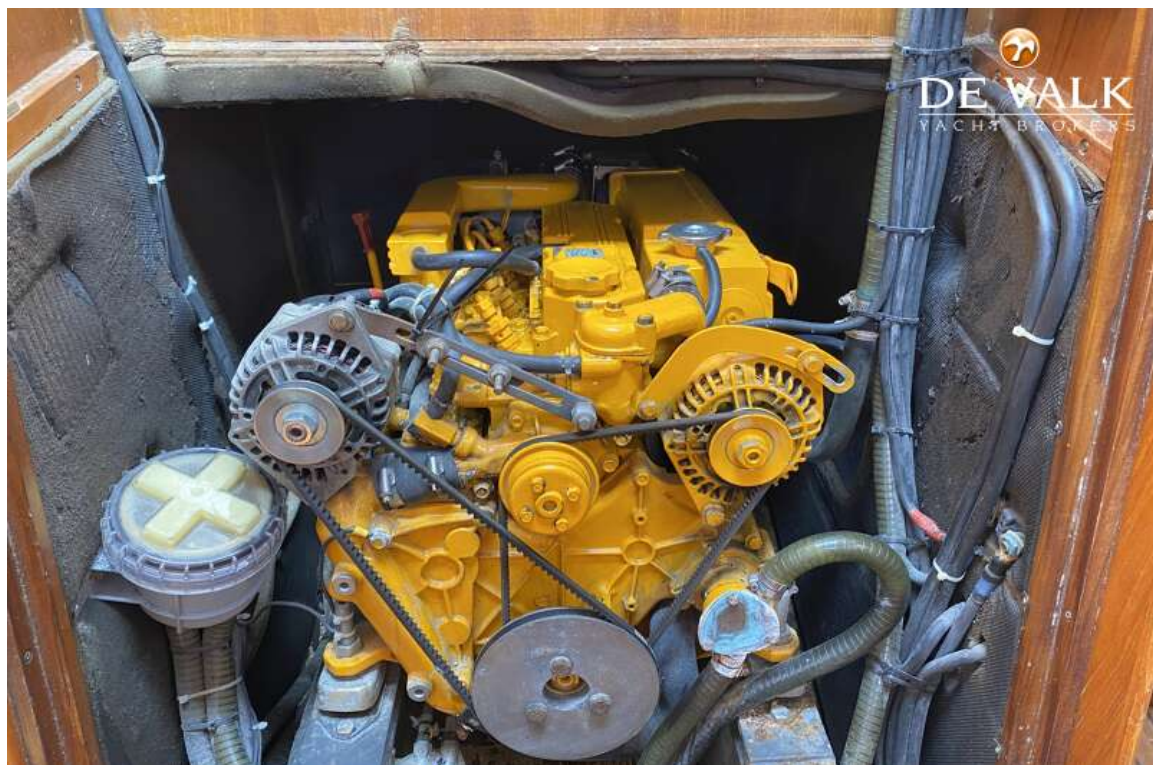
GIB SEA 442 MASTER



GIB SEA 442 MASTER



GIB SEA 442 MASTER



GIB SEA 442 MASTER

