



DE VALK
YACHT BROKERS



GREENLINE 33 HYBRID



DE VALK
YACHT BROKERS

GREENLINE 33 HYBRID

BROKER'S COMMENTS

Innovative, surprising, multifunctional and a proven, successful concept, the Greenline motor yachts are now very popular. The Greenline 33 Hybrid called 'Gloria' is well maintained and is from the first owner. Because of her practical layout you will experience a very homely feeling and it is a pleasure to stay on board for longer. This Greenline is also equipped with the Hybrid package which gives you the possibility to enjoy the water and nature without engine noise. Are you looking for a yacht that is quiet, economical, safe and fast? Then be sure to make an appointment.

Jochem Heijermans

SPECIFICATIONS

Dimensions	9.99 x 3.49 x 0.70 (m)	Builder	Seaway Group d.o.o., Bled
Built	2011	Cabins	1
Material	GRP	Berths	4
Engine(s)	1 x Volkswagen TDI 150-5 delec	Hp/Kw	150.00 (hp), 110.25 (kw)
Asking price	sold (VAT)	Lying	elsewhere / Not at sales office

CONTACT

Sales office	De Valk Belgium	Telephone	+32 586 80 218
Address	1401 PT Nieuwpoort BE	E-mail	belgium@devalk.nl

DISCLAIMER

These particulars are given in good faith as supplied but cannot be guaranteed.



GREENLINE 33 HYBRID

GENERAL

Model	GREENLINE 33 HYBRID
Type	motor yacht
LOA (m)	9,99
LWL (m)	9,85
Beam (m)	3,49
Draft (m)	0,70
Air draft (m)	3,10
Headroom (m)	2,00
Year built	2011
Builder	Seaway Group d.o.o., Bled
Country	Slovenia
Designer	J&J Design
Displacement (t)	4,8
CE norm	B
Hull material	GRP
Superstructure material	GRP
Rubbing strake	stainless steel
Deck material	GRP
Deck finish	non-skid moulded in
Superstructure deck finish	non-skid moulded in
Cockpit deck finish	non-skid moulded in
Window material	tempered glass
Fuel tank (litre)	polyethylene 200
Fuel tank 2 (litre)	polyethylene 200
Level indicator (fuel tank)	yes
Freshwater tank (litre)	400
Level indicator (freshwater)	yes
Blackwater tank (litre)	60
Level indicator (blackwater)	yes
Greywater tank (litre)	



GREENLINE 33 HYBRID

Wheel steering	hydraulic
Emergency tiller	yes

ACCOMMODATION

Cabins	1
Berths	4
Floor	carpet
Open cockpit	yes
Pilot house/deck saloon	With dinette and settee
Saloon	yes
Headroom saloon (m)	2.00
Heating	diesel ducted hot air Webasto
Dinette to convert into berth	yes
Sliding door to cockpit	yes
Galley	yes
Countertop	plastic
Sink	stainless steel
Cooker	ceramic 2 burner Gorenje
Microwave/oven combi	Sharp
Fridge	Gorenje 270l
Freezer	Gorenje 87l
Hot water system	220V + engine Webasto
Water pressure system	electrical
Coffee maker	yes
Crockery	yes
Owners cabin	double bed Double
Bed length (m)	Adaptive V or double bed 2,00 x 0,80/1,60
Wardrobe	hanging and drawers
Bathroom	en suite
Toilet	en suite
Toilet system	manual



GREENLINE 33 HYBRID

Wash basin	in the bathroom
Shower	en suite
Extra info	Interior lights LED

MACHINERY

No of engines	1
Make	Volkswagen
Type	TDI 150-5
HP	150
kW	110,25
Fuel	diesel electric
Year installed	2011
Maximum speed (kn)	14
Cruising speed (kn)	8
Consumption (l/hr)	4
Engine hours	600
Engine cooling system	freshwater heat exchanger
Drive	shaft
Engine controls	bowden cable
Gearbox	hydraulic
Electric engine	yes
Bowthruster	electric Side-Power SE40
Electric hybride drive	Iskra 7kW/48v
Gearbox	hydraulic
Exhaust	watercooled
Thrust bearing	yes
Propeller type	5 blades high efficiency propeller
Propeller blades	5
Propeller shaft material	stainless steel
Shaft lubrication	water
Manual bilge pump	In cockpit



GREENLINE 33 HYBRID

Electric bilge pump	yes
Electrical installation	12v/22v/220v
Generator	5KW via main engine
Batteries	yes
Start battery	Optima 12v/50ah (2020)
Service battery	Victron AMD 12v/180ah
Electric engine battery	48V
Bowthruster battery	Victron AMD 12v/180ah
Battery monitor	Victron Energy
Battery charger	Victron 12v/35ah
Inverter	Victron 48/3000
Diode battery combiners	yes
Shorepower	with cable
Extra info	Extra motor isolation

NAVIGATION

Compass	Plastimo
Electric compass	Furuno GP-32
Depth sounder	Raymarine ST40 Bidata
Log	Furuno GP-32
VHF	Raymarine Ray 49E
GPS	Furuno GP-32
Navigation lights	yes

EQUIPMENT

Fixed windscreen	yes
Window cover	yes
Cockpit cushions	yes
Bathing platform	Manual fold-out type
Boarding ladder	stainless steel
Transom door	Starboard side



GREENLINE 33 HYBRID

Deck shower	W+C
Anchor	Brittany
Anchor chain	40m
Windlass	electrical Quick, 500W + remote control
Capstan	yes
Sea railing	stainless steel
Pushpit	yes
Pulpit	yes
Lifejackets	yes
Wiper	yes
Window ventilator	yes
Radar reflector	yes
Fenders	yes
Mooring lines	yes
TV	yes
TV receiver	Glomex
Radio	Sony
iPod connection	yes
Cockpit speakers	yes
Speakers in salon	yes
Fire extinguisher	yes



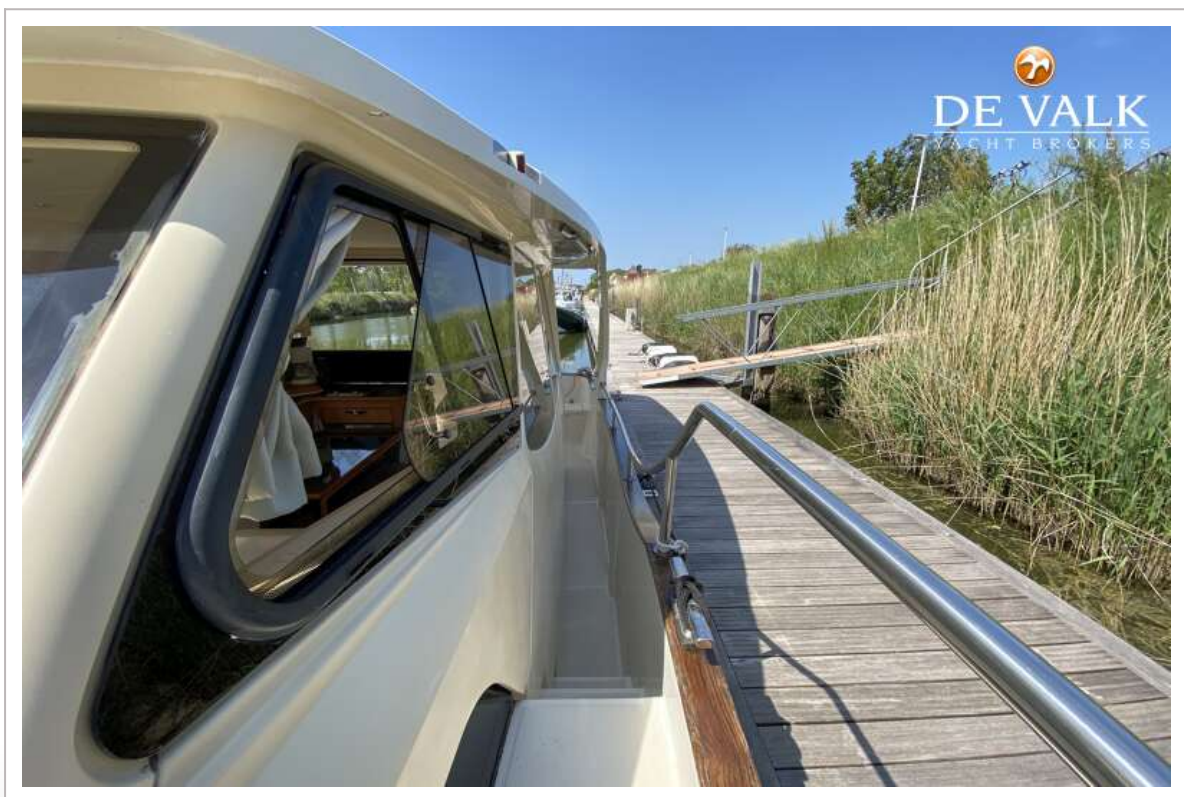
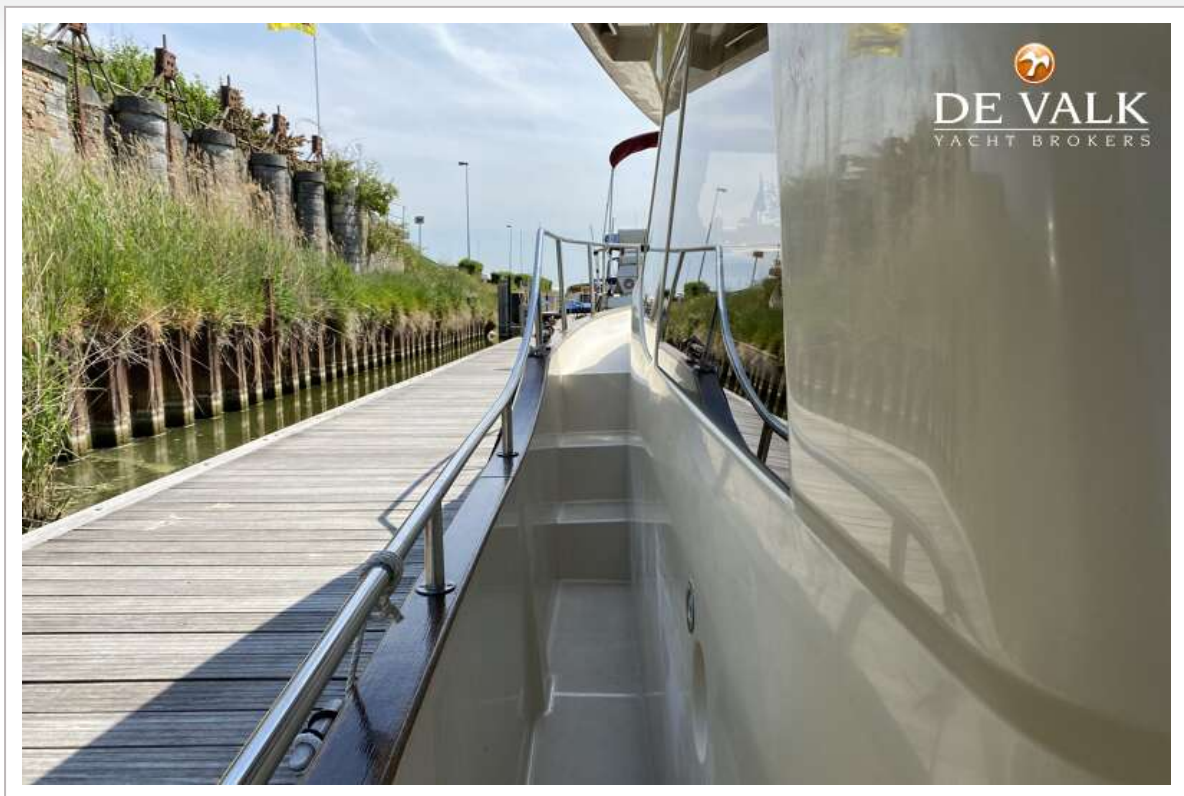
GREENLINE 33 HYBRID



GREENLINE 33 HYBRID



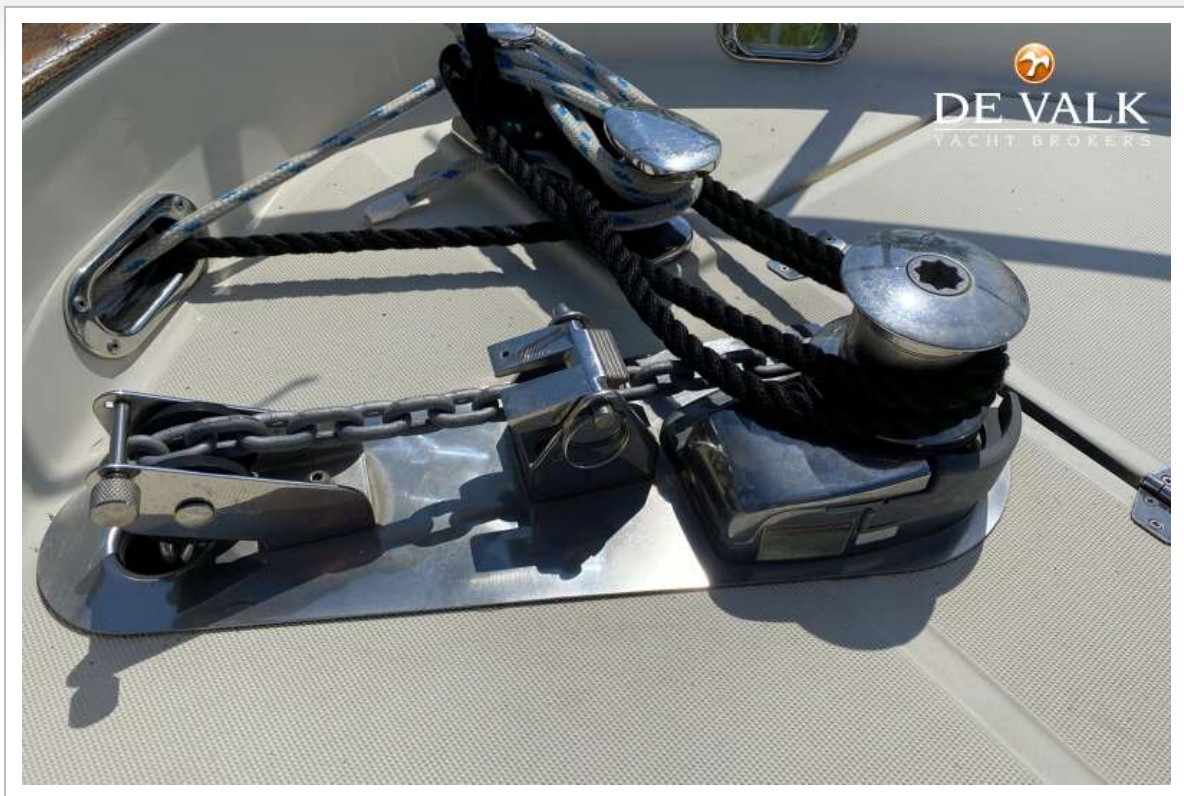
GREENLINE 33 HYBRID



GREENLINE 33 HYBRID



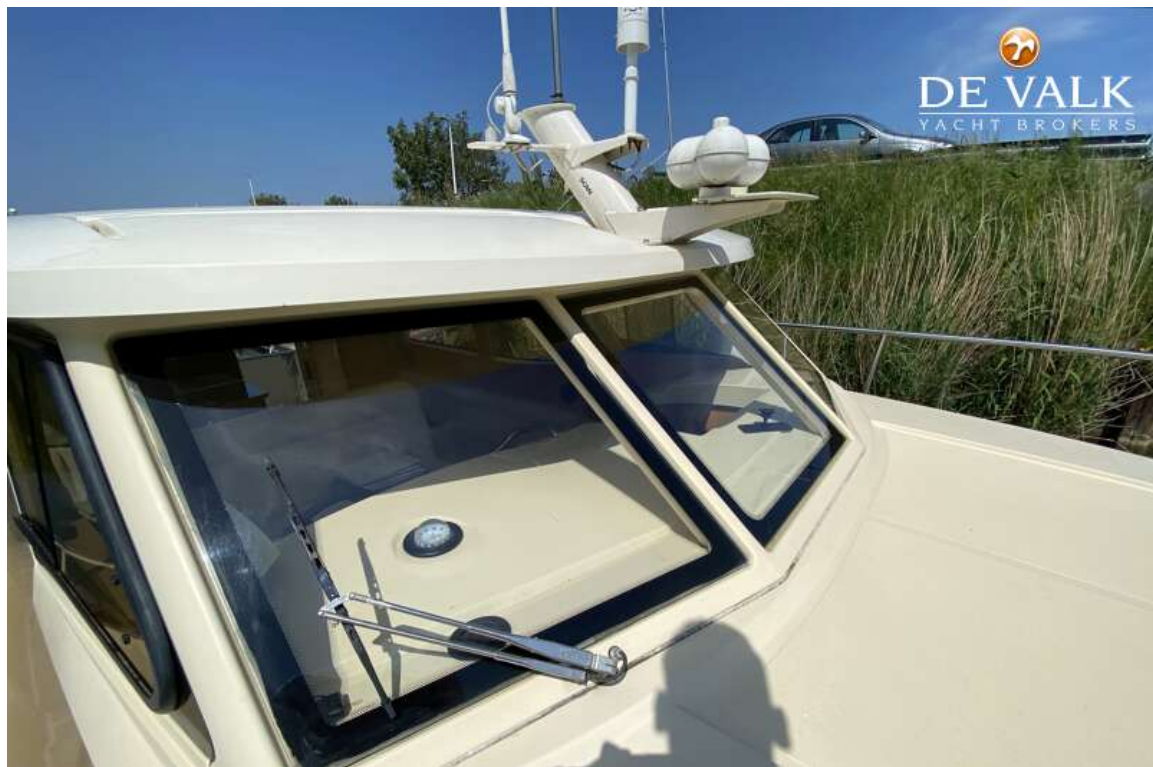
GREENLINE 33 HYBRID



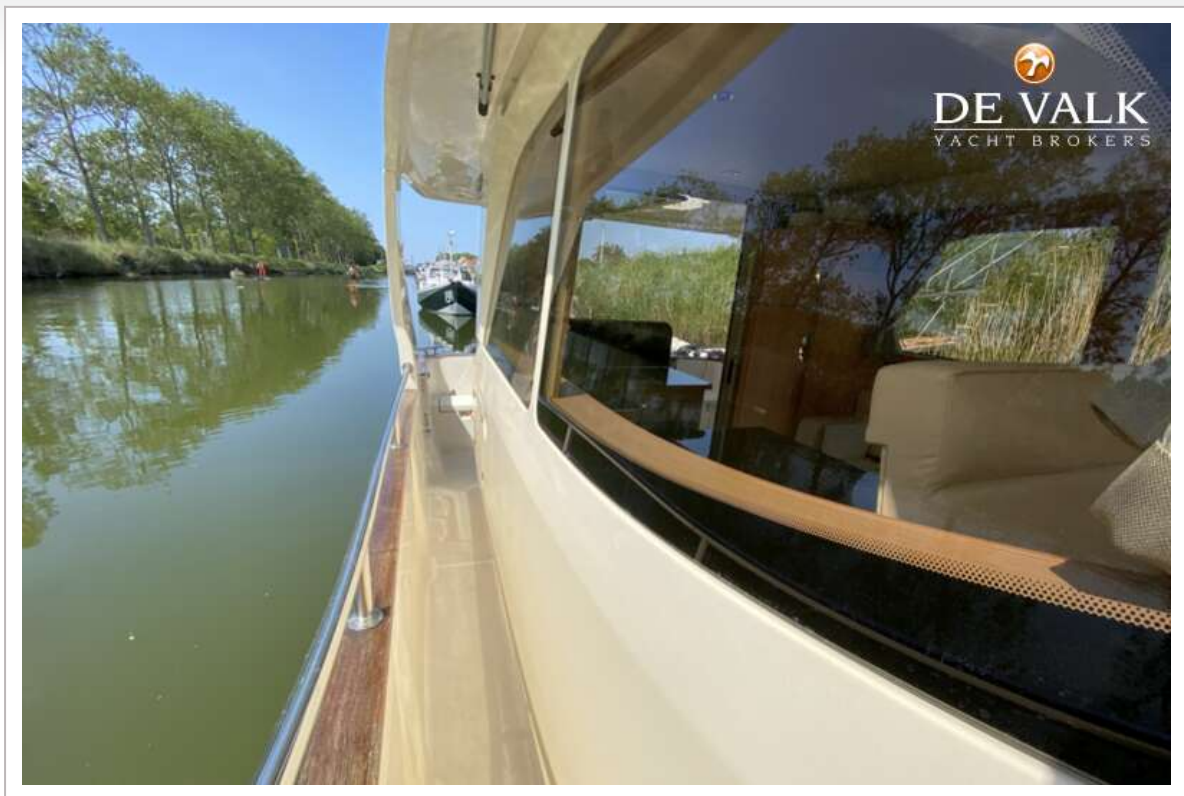
GREENLINE 33 HYBRID



GREENLINE 33 HYBRID



GREENLINE 33 HYBRID



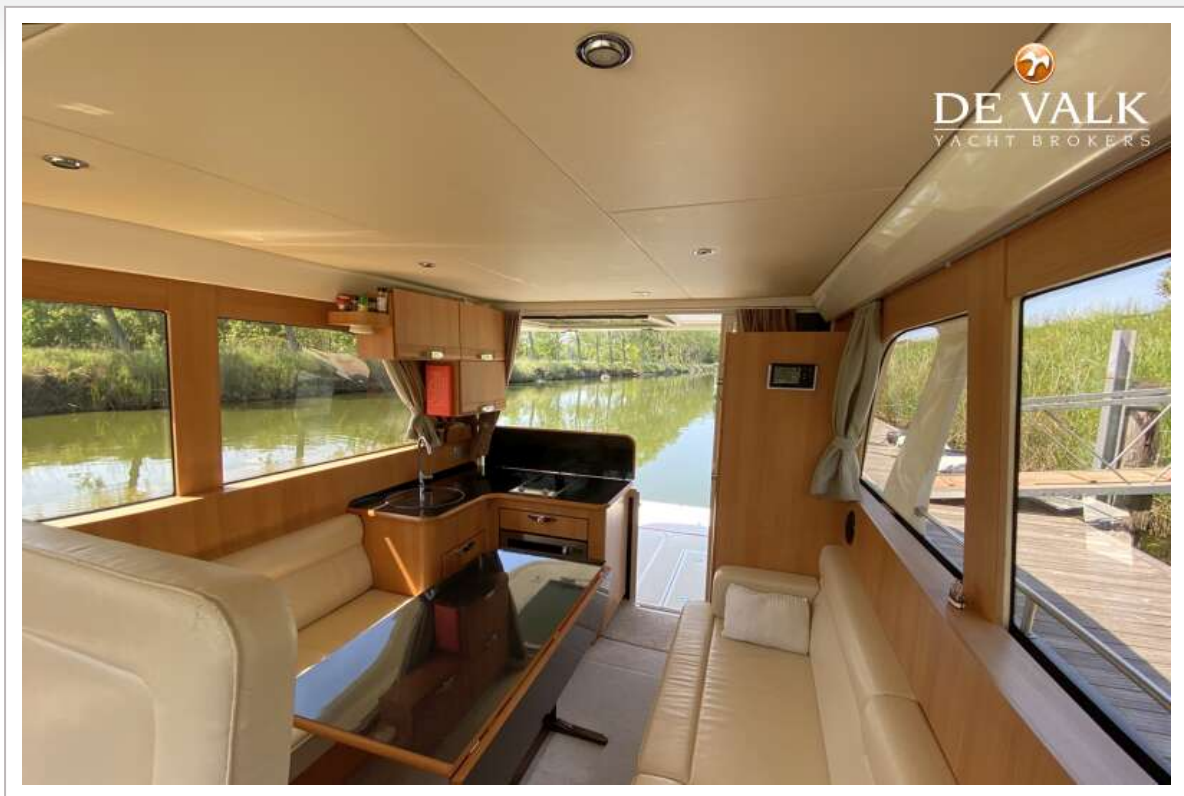
GREENLINE 33 HYBRID



GREENLINE 33 HYBRID



GREENLINE 33 HYBRID



GREENLINE 33 HYBRID



GREENLINE 33 HYBRID



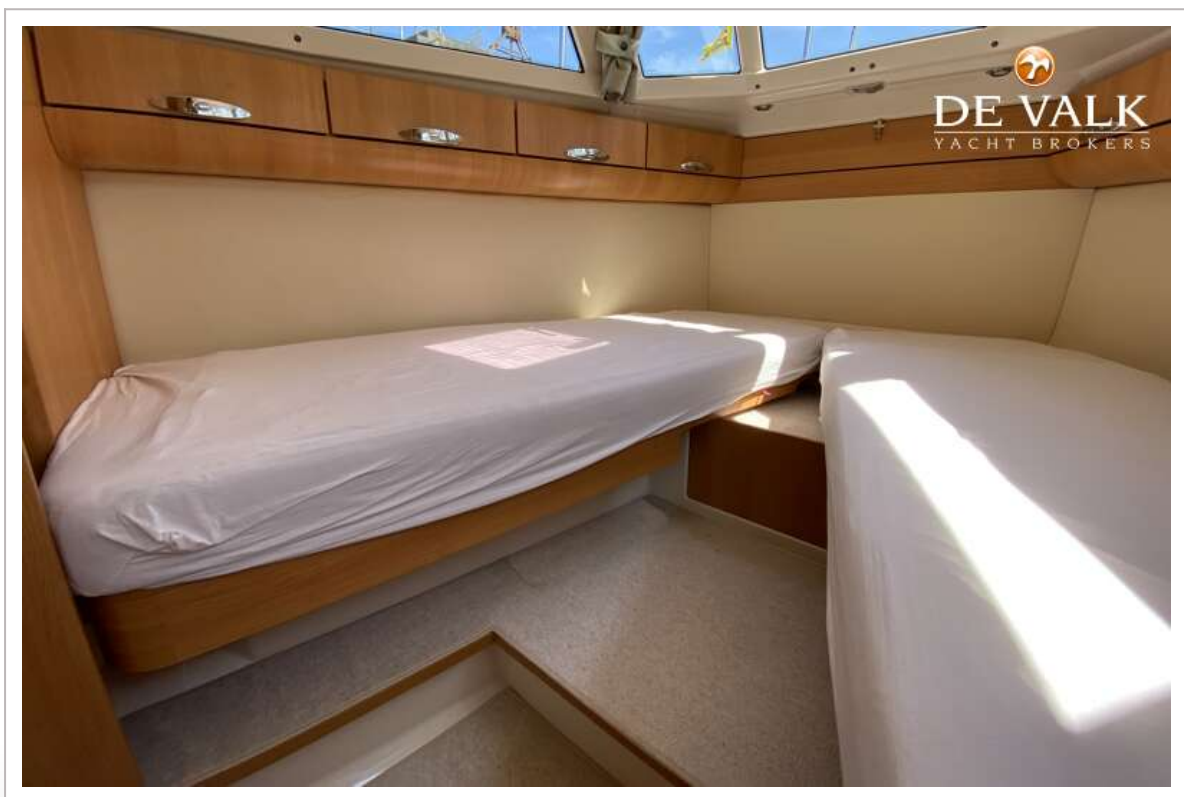
GREENLINE 33 HYBRID



GREENLINE 33 HYBRID



GREENLINE 33 HYBRID



GREENLINE 33 HYBRID



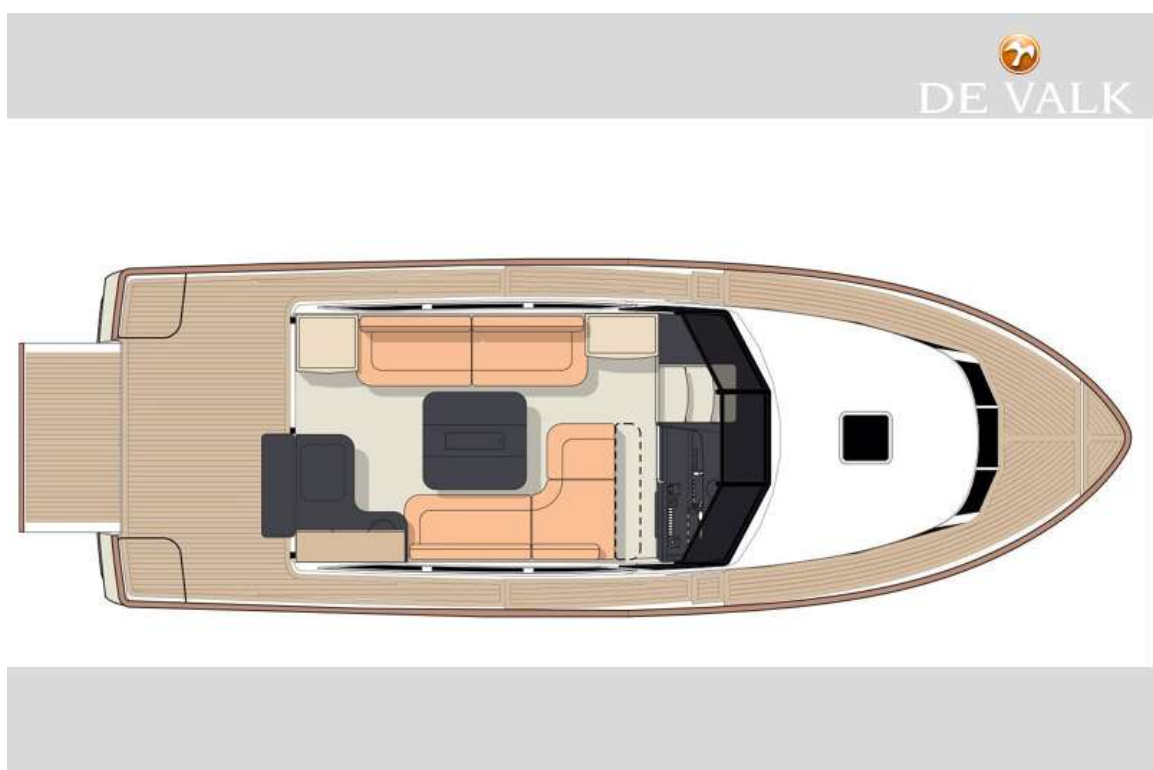
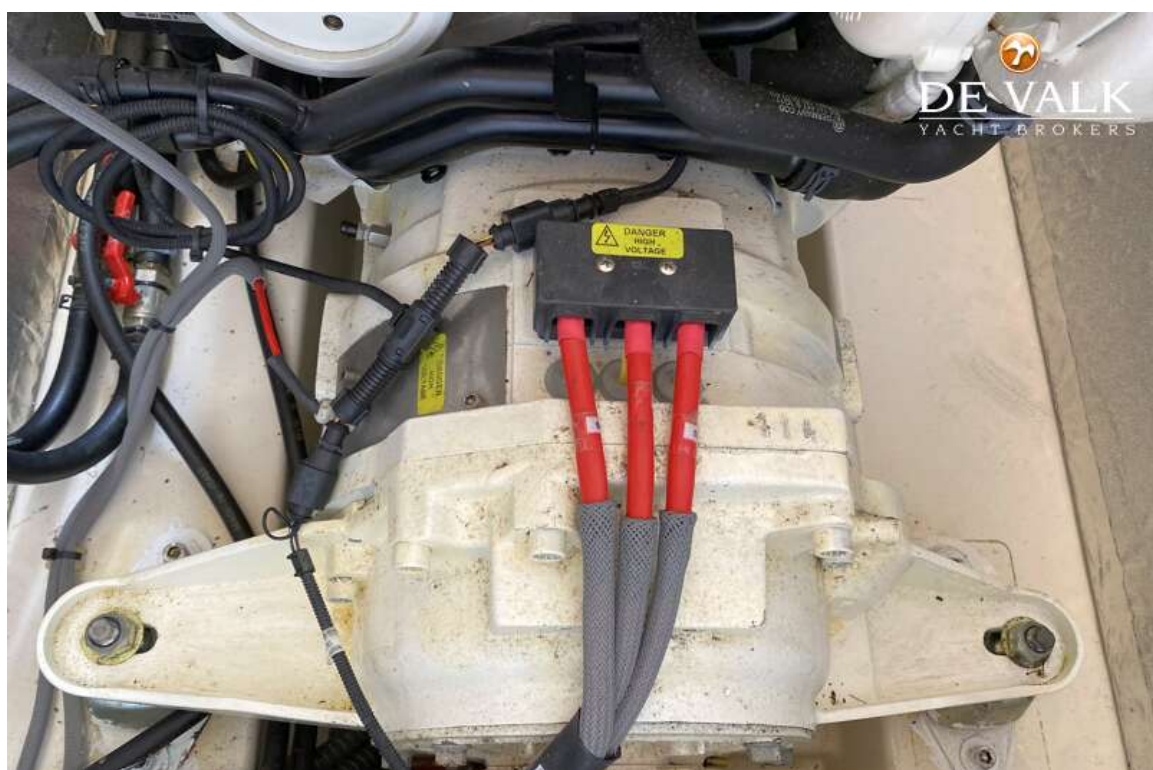
GREENLINE 33 HYBRID



GREENLINE 33 HYBRID



GREENLINE 33 HYBRID



GREENLINE 33 HYBRID

