



PACIFIC ALLURE 155



PACIFIC ALLURE 155

BROKER'S COMMENTS

The Pacific Allure 155 "Sound of Silence" (2005) combines timeless design with solid Dutch craftsmanship. Powered by a Volvo Penta D4-260 with low hours, she offers reliable and efficient cruising. Bow and stern thrusters ensure easy manoeuvring in any harbour. A generator and AIS provide comfort and safety at sea. The interior is bright and spacious, with a well-equipped galley and comfortable layout. "Sound of Silence" is in excellent condition and ready to go.

Jochem Heijermans

SPECIFICATIONS

Dimensions	16.80 x 4.70 x 1.30 (m)	Builder	Pacific Shipyards
Built	2005	Cabins	2
Material	Steel	Berths	4
Engine(s)	1 x Volvo Penta D4-260 diesel	Hp/Kw	260.00 (hp), 191.36 (kw)
Asking price	€ 327.500 (VAT Paid)	Lying	elsewhere / Not at sales office

CONTACT

Sales office	De Valk Belgium	Telephone	+32 586 80 218
Address	1401 PT Nieuwpoort BE	E-mail	belgium@devalk.nl

DISCLAIMER

These particulars are given in good faith as supplied but cannot be guaranteed.



GENERAL

Model	PACIFIC ALLURE 155
Type	motor yacht
LOA (m)	16,80
LWL (m)	15,50
Beam (m)	4,70
Draft (m)	1,30
Headroom (m)	2,00
Year built	2005
Builder	Pacific Shipyards
Country	The Netherlands
Displacement (t)	27
CE norm	C
Hull material	steel
Hull colour	white
Hull thickness (mm)	5
Hull shape	hard chine
Keel type	long keel
Superstructure material	steel
Rubbing strake	stainless steel
Deck material	steel
Deck finish	non-skid paint
Superstructure deck finish	non-skid paint
Cockpit deck finish	non-skid paint
Window frame	aluminium
Window material	double glazing
Deckhatch	yes
Portholes	aluminium
Insulation	rockwool
Mast can be lowered	yes
Fuel tank (litre)	steel 2x 650



Fuel tank 2 (litre)	steel 800l (red)
Level indicator (fuel tank)	yes
Freshwater tank (litre)	stainless steel 1200
Level indicator (freshwater)	yes
Blackwater tank (litre)	stainless steel 300
Level indicator (blackwater)	yes
Blackwater tank extraction	deck extraction + pump
Wheel steering	hydraulic
More info on hull	Harsonic (2019)

ACCOMMODATION

Cabins	2
Berths	4
Interior	teak
Floor	cork (2019)
Aft deck	yes
Saloon	yes
Headroom saloon (m)	2.00
Heating	central heating Kabola B17-tap
Aft Cabin	yes
Dinette	yes
Opening door to aft deck	yes
Galley	yes
Countertop	granite
Sink	stainless steel
Cooker	electric
Extractor	yes
Microwave/oven combi	Siemens
Fridge	yes
Freezer	yes
Hot water system	on central heating



Water pressure system	electrical
Owners cabin	French bed
Bed length (m)	2.00 x 1.60
Wardrobe	hanging and shelves
Bathroom	shared
Toilet	shared
Toilet system	electric
Wash basin	in the bathroom
Shower	shared
Guest cabin 1	v-bed
Wardrobe	hanging and shelves
Bathroom	shared
Toilet system	electric
Wash basin	at the toilet
Washing machine	Siemens
Dryer	Whirlpool
Extra info	Utility room

MACHINERY

No of engines	1
Make	Volvo Penta
Type	D4-260
HP	260
kW	191.36
Fuel	diesel
Year installed	2005
Maximum speed (kn)	10
Cruising speed (kn)	8
Engine hours	265
Engine cooling system	freshwater heat exchanger
Drive	shaft



Engine controls	electrical
Gearbox	hydraulic
Bowthruster	Remote controll
Sternthruster	Remote controll
Exhaust	watercooled
Thrust bearing	yes
Shaft lubrication	water
Electric bilge pump	yes
Electrical installation	24V/220V
Generator	silent separator Mastervolt Whisper 12
Start battery	2025
Service battery	2024
Generator battery	2022
Battery monitor	yes
Battery charger	Mastervolt 24V/100Ah
Inverter	Mastervolt 24V/2500
Shorepower	with cable

NAVIGATION

Electric compass	On autopilot
Depth sounder/log	Raymarine ST60 Tridata
VHF	Icom IC-M330
Autopilot	Raymarine
Rudder angle indicator	On autopilot
Radar/GPS/plotter	Raymarine C80
AIS transceiver	Raymarine
Navigation lights	yes

EQUIPMENT

Cockpit cover	(2021) Perlo
Bimini	yes



Cockpit cushions	2021
Cockpit table	yes
Cockpit chairs	yes
Deck shower	yes
Anchor	yes
Windlass	electrical
Capstan	yes
Sea railing	stainless steel
Grab rail (superstructure)	stainless steel
Railing side opening gates	2x
Pushpit	yes
Pulpit	yes
Wiper	yes
Horn	electric
Fenders	yes
Mooring lines	yes
TV	yes
Radio	yes
Speakers in salon	yes
Fire extinguisher	yes



PACIFIC ALLURE 155



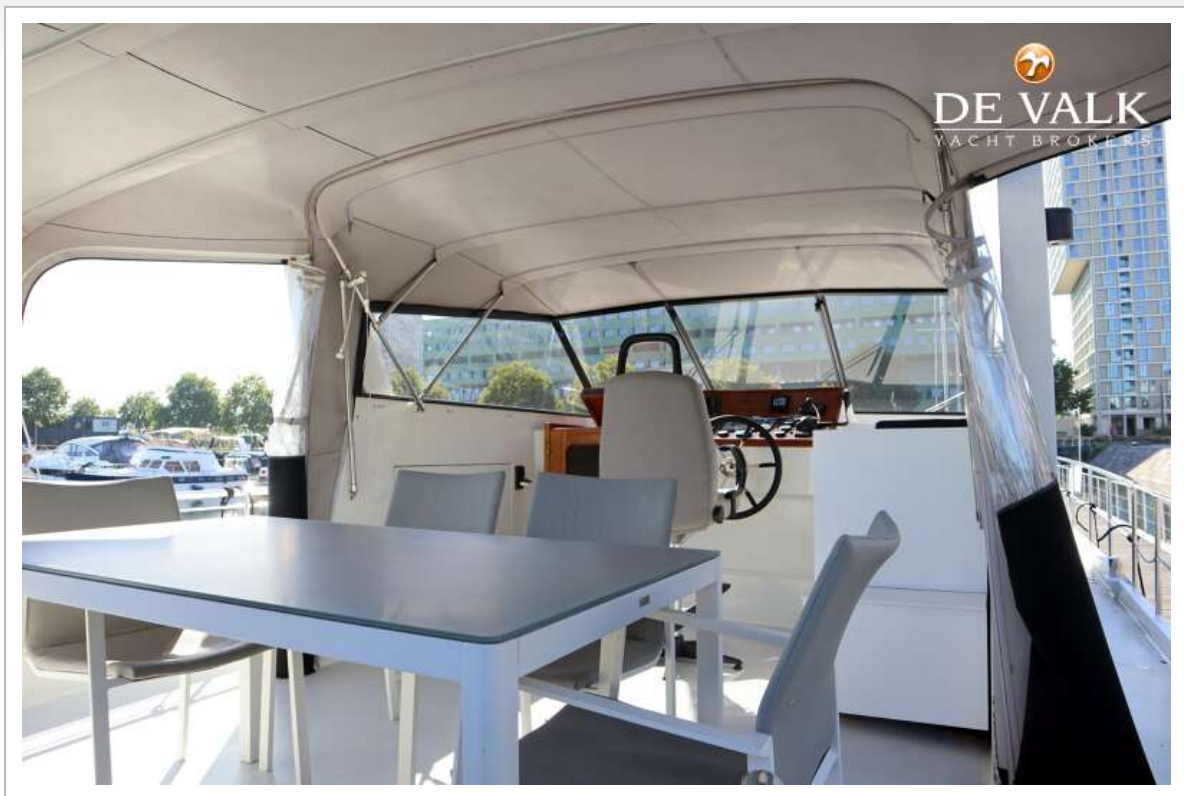
PACIFIC ALLURE 155



PACIFIC ALLURE 155



PACIFIC ALLURE 155



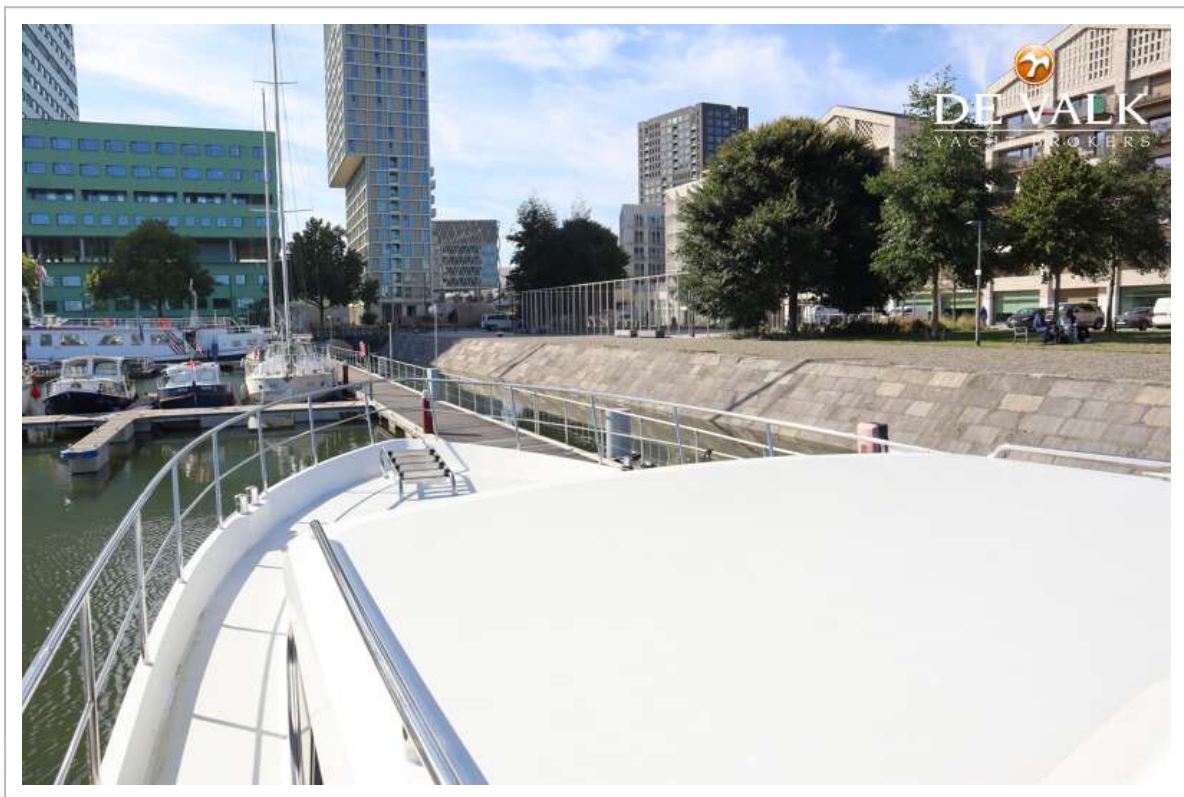
PACIFIC ALLURE 155



PACIFIC ALLURE 155



PACIFIC ALLURE 155



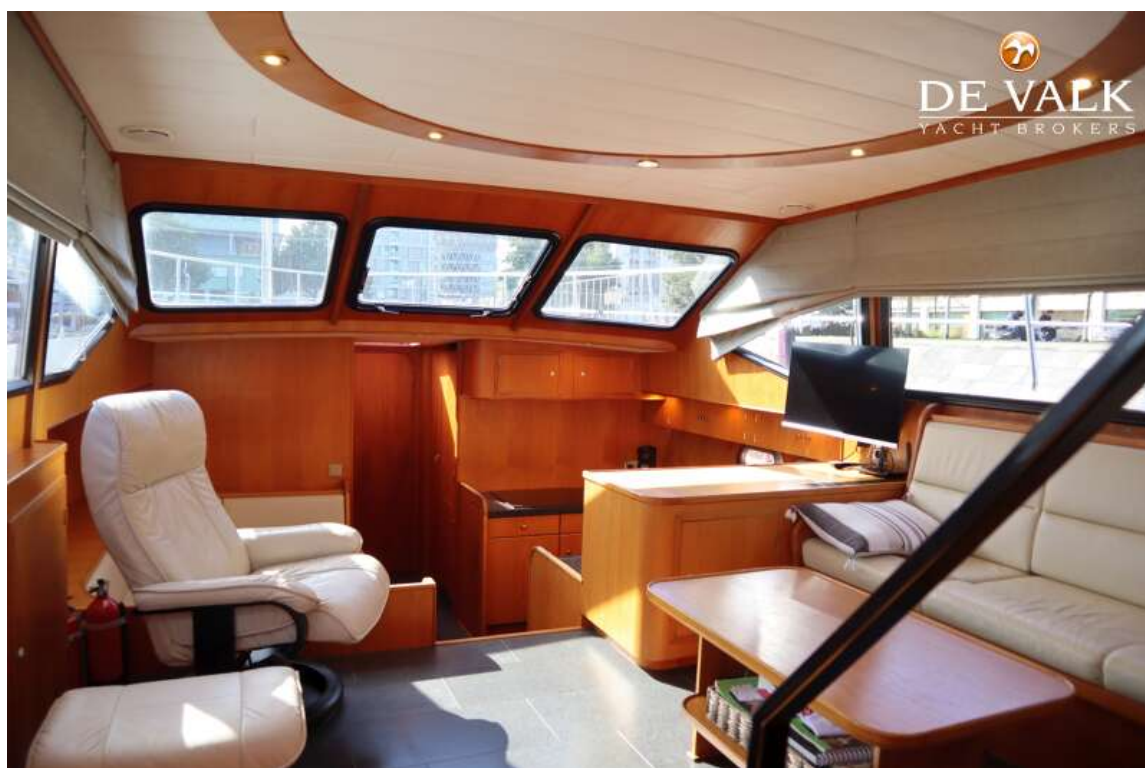
PACIFIC ALLURE 155



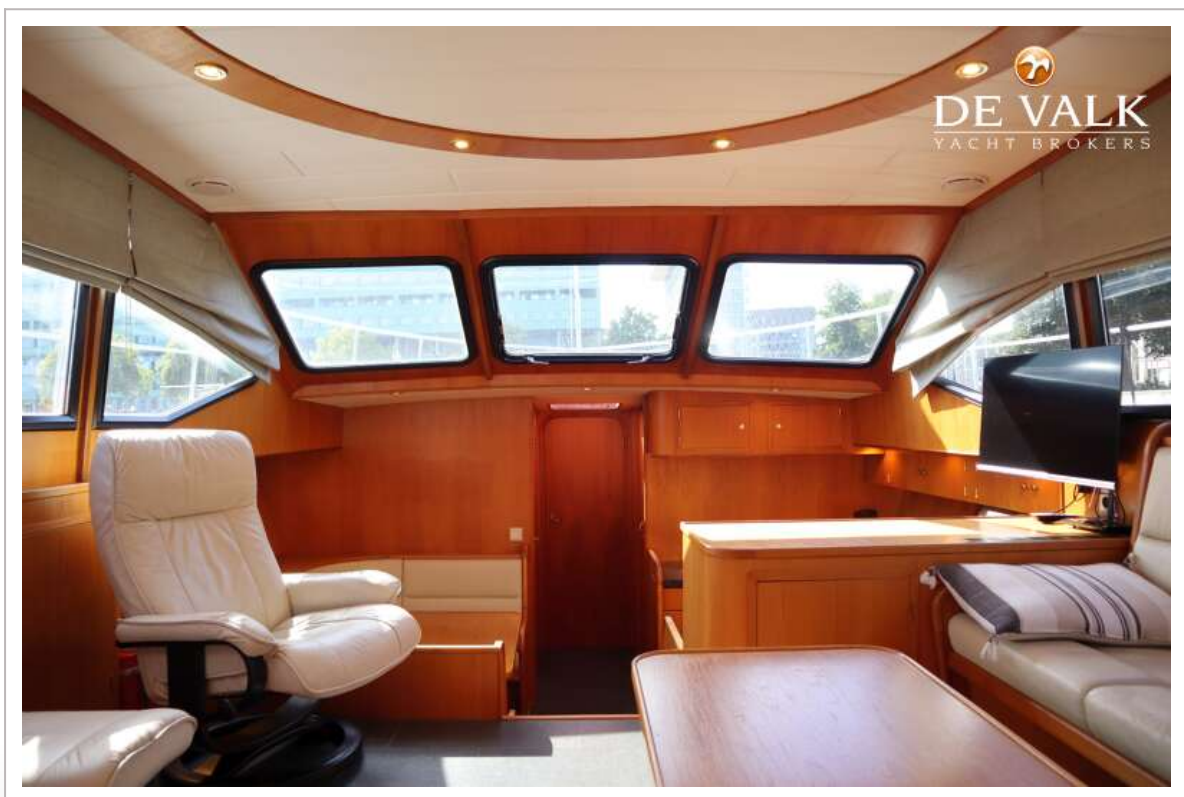
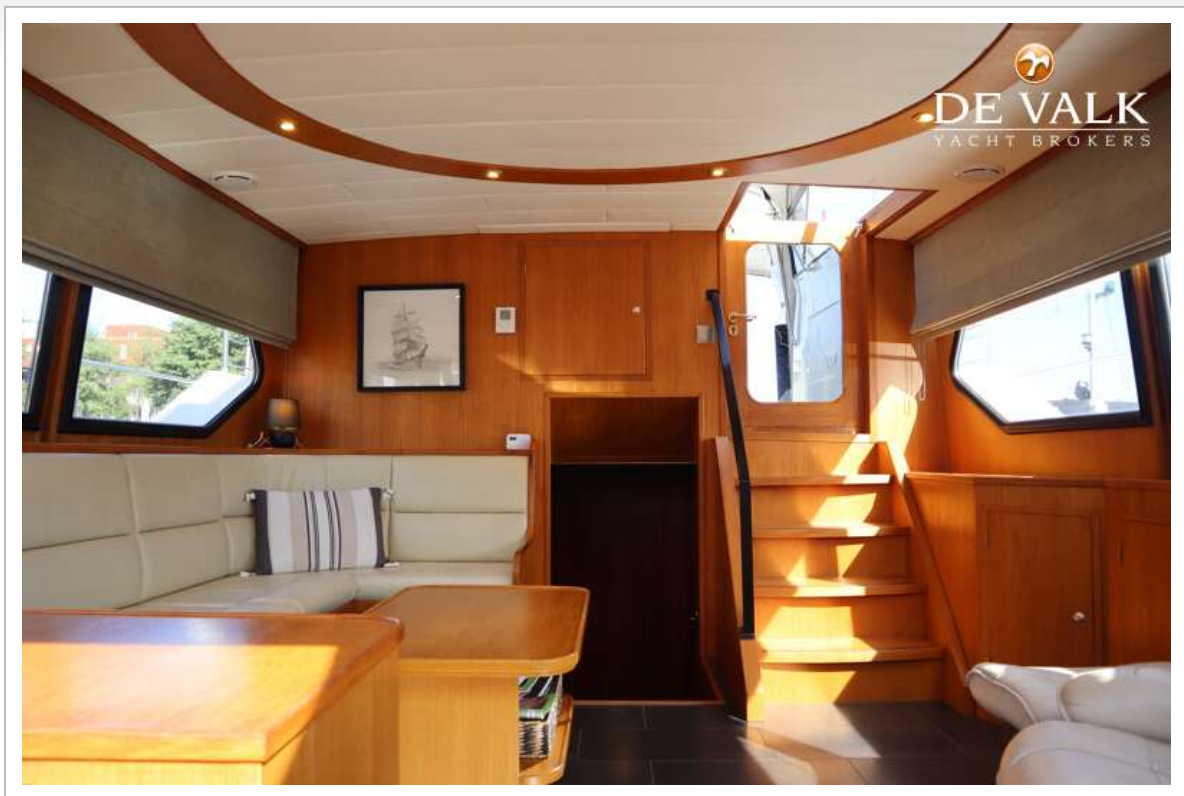
PACIFIC ALLURE 155



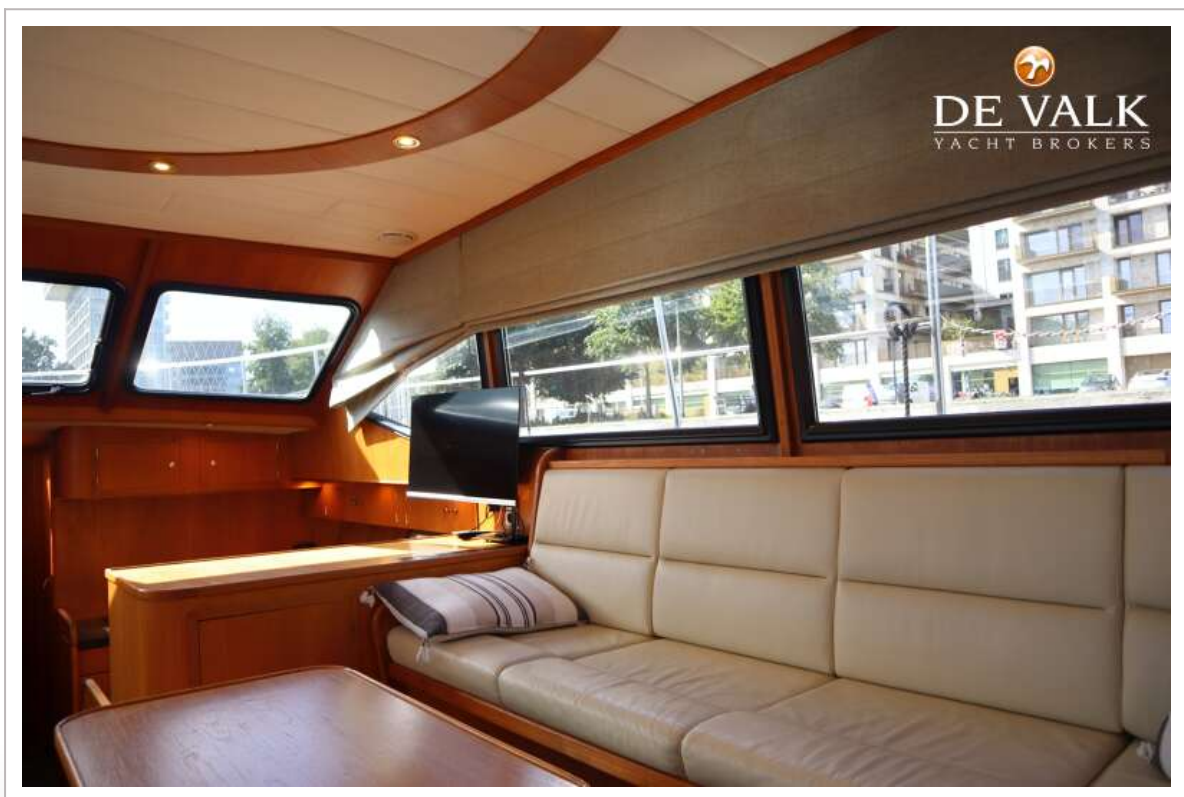
PACIFIC ALLURE 155



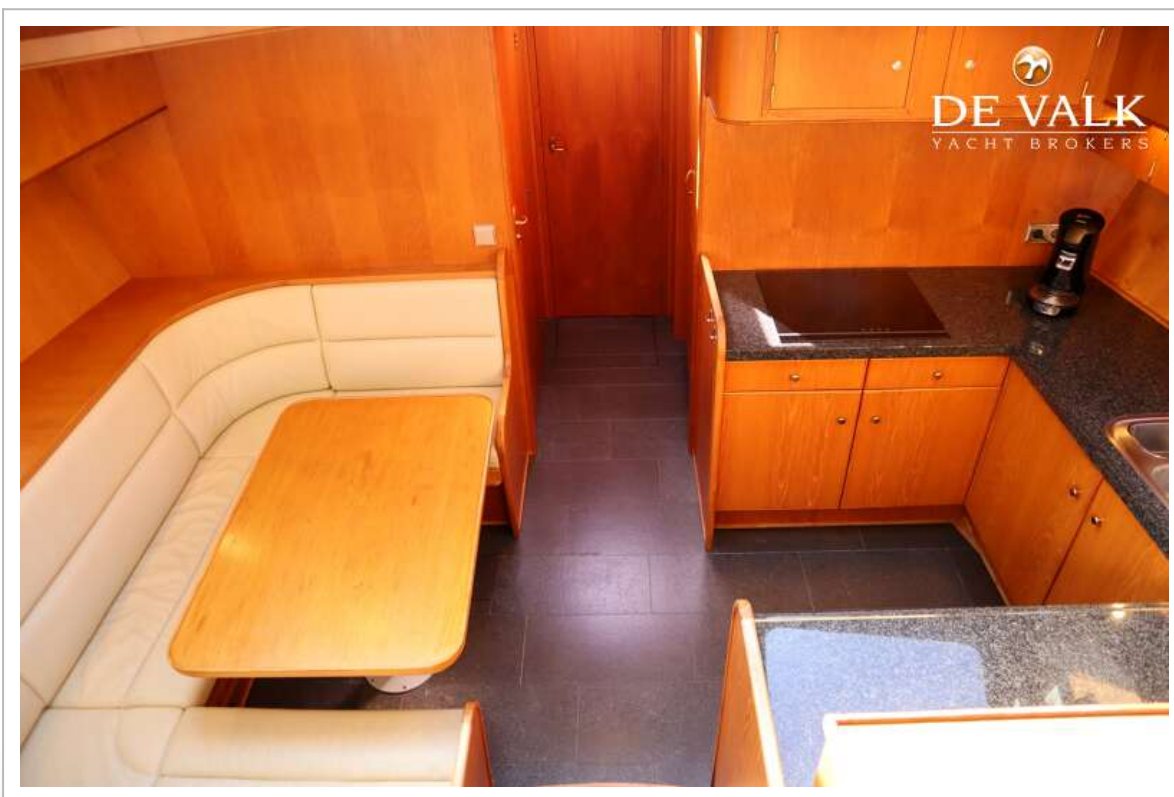
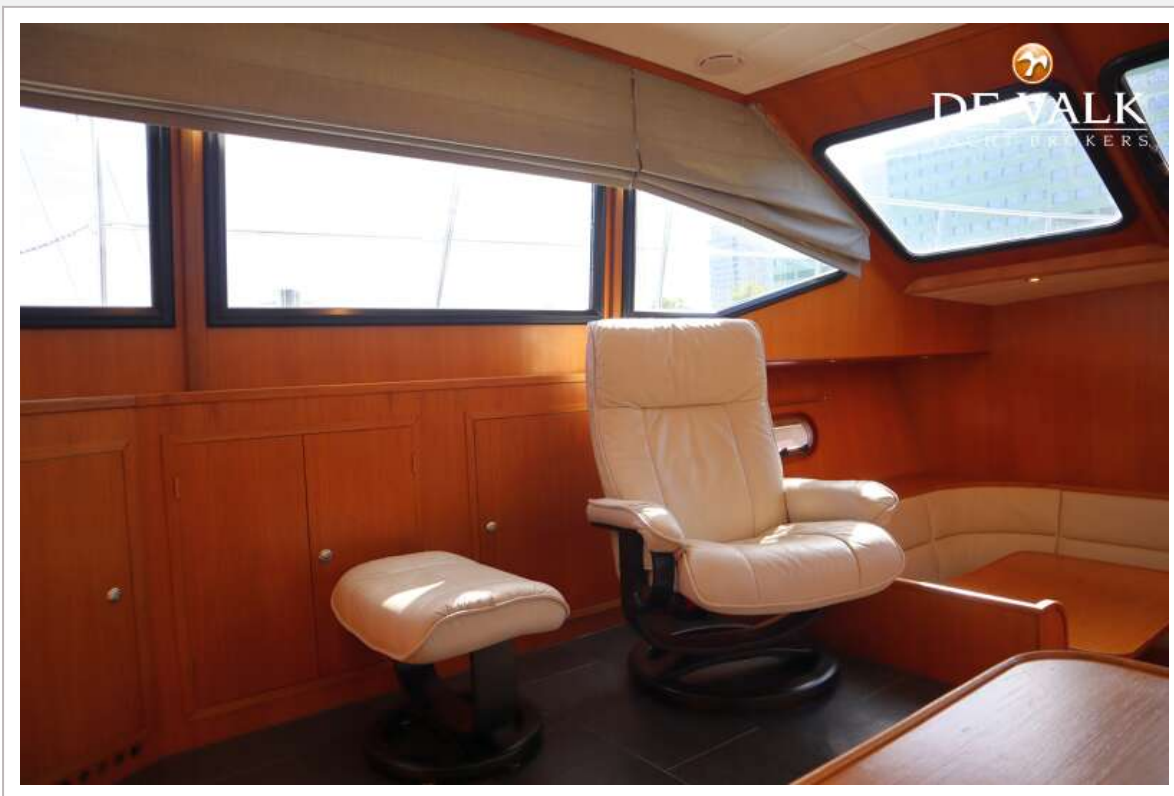
PACIFIC ALLURE 155



PACIFIC ALLURE 155



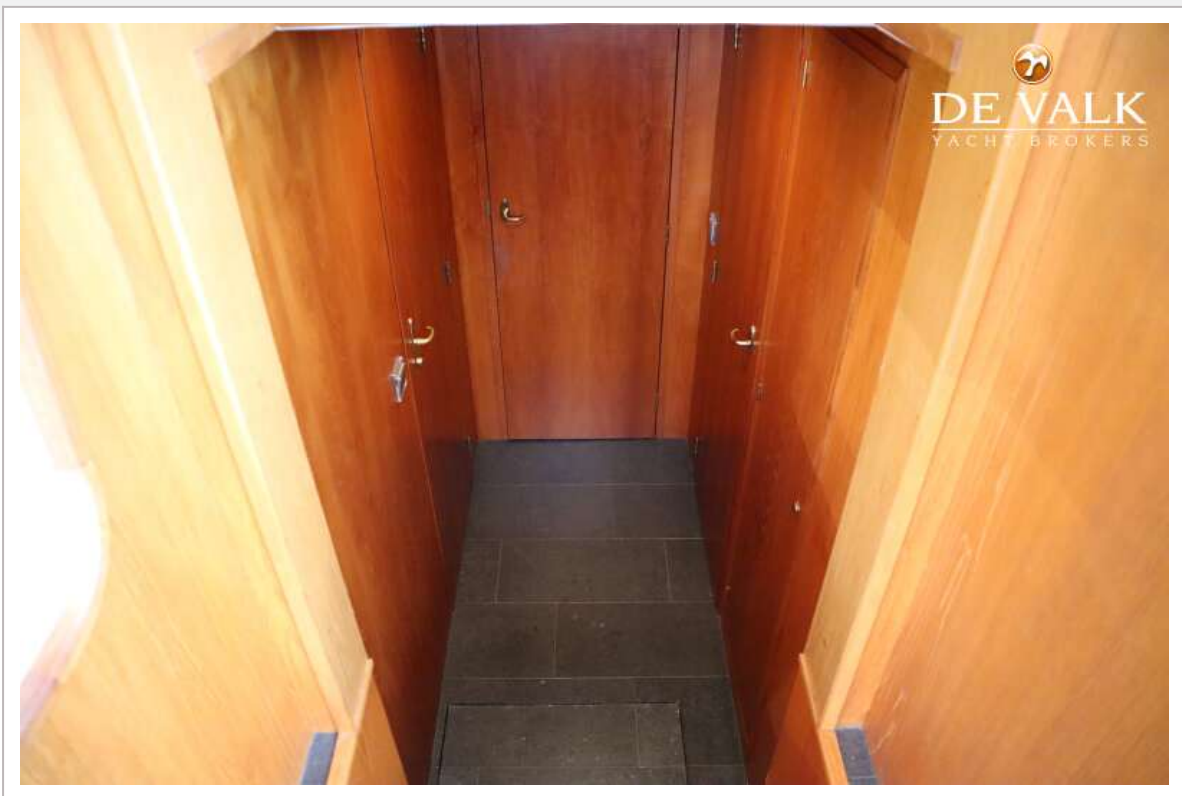
PACIFIC ALLURE 155



PACIFIC ALLURE 155



PACIFIC ALLURE 155



PACIFIC ALLURE 155

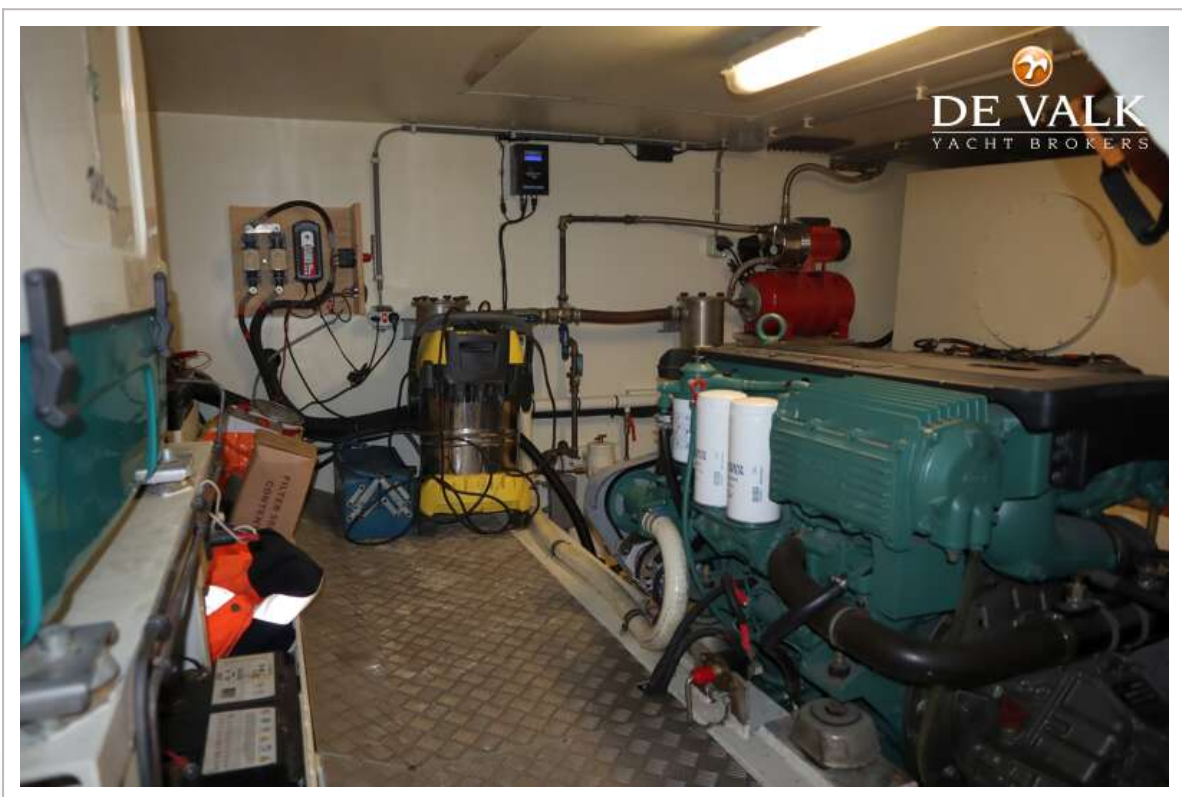
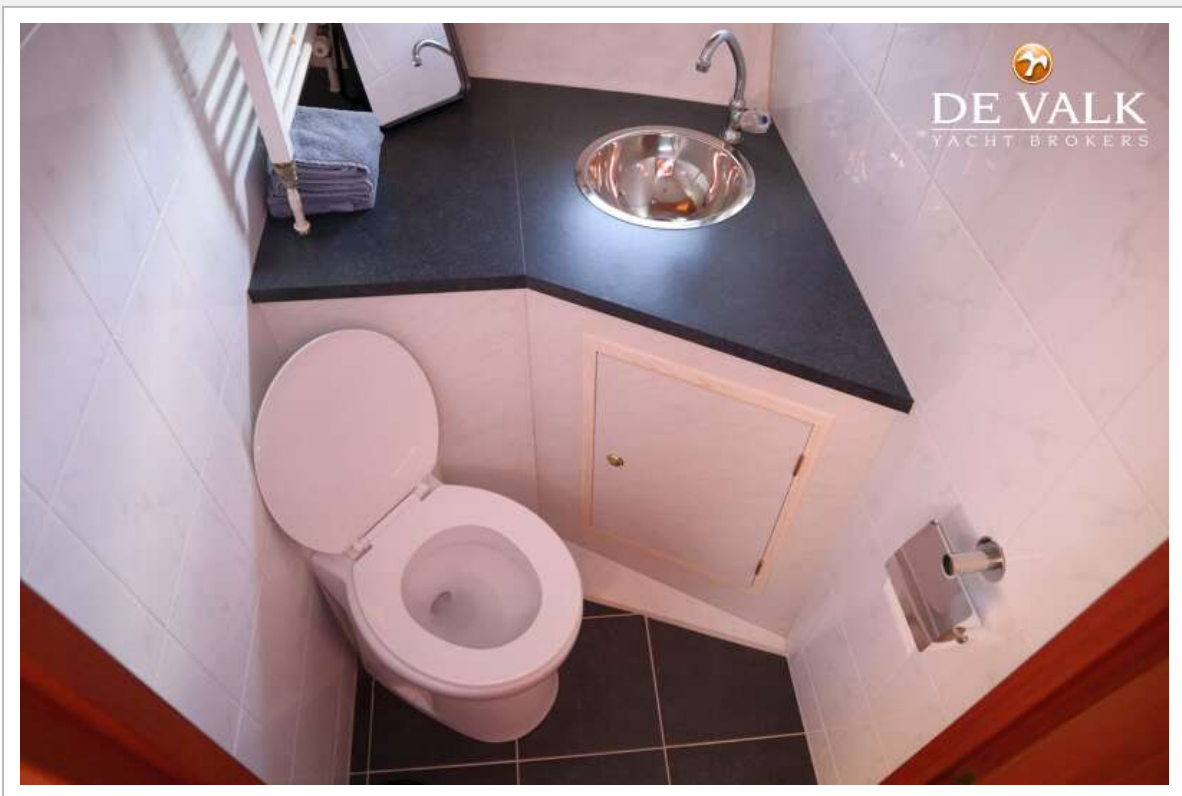


PACIFIC ALLURE 155



PACIFIC ALLURE 155





PACIFIC ALLURE 155

