



SUCCES 125 ULTRA



**DE VALK**  
YACHT BROKERS

# SUCCES 125 ULTRA

## BROKER'S COMMENTS

The Succes Ultra 125 is the motor yacht you are looking for if you want to sail the inland and coastal waters. This Succes Ultra 125 is very suitable for a longer comfortable stay on board, partly due to her spacious saloon, owners cabin with separate shower and toilet. Thanks to the Succes's clearance height and strong reliable engine it is perfectly possible to sail the French canals. Furthermore she manoeuvres very easily through her Vetus bow and stern thruster. This Succes Ultra 125 can be viewed by appointment, she is definitely worth it.

*Jochem Heijermans*

## SPECIFICATIONS

<b>Dimensions</b>	12.50 x 4.00 x 1.15 (m)	<b>Builder</b>	Succes Jachten Marknesse
<b>Built</b>	2005	<b>Cabins</b>	2
<b>Material</b>	Steel	<b>Berths</b>	5
<b>Engine(s)</b>	1 x Iveco 8060SM diesel	<b>Hp/Kw</b>	210.00 (hp), 154.00 (kw)
<b>Asking price</b>	sold (VAT )	<b>Lying</b>	elsewhere / Not at sales office

## CONTACT

<b>Sales office</b>	De Valk Belgium	<b>Telephone</b>	+32 586 80 218
<b>Address</b>	1401 PT Nieuwpoort BE	<b>E-mail</b>	belgium@devalk.nl

## DISCLAIMER

These particulars are given in good faith as supplied but cannot be guaranteed.



# SUCCES 125 ULTRA

## GENERAL

Model	SUCCES 125 ULTRA
Type	motor yacht
LOA (m)	12,50
Beam (m)	4,00
Draft (m)	1,15
Air draft (m)	4,00
Air draft min (m)	2,90
Year built	2005
Builder	Succes Jachten Marknesse
Country	The Netherlands
Designer	Succes Jachten
Displacement (t)	13
CE norm	C
Hull material	steel
Hull colour	white
Hull shape	hard chine
Superstructure material	steel
Rubbing strake	plastic
Deck material	steel
Deck finish	non-skid paint
Superstructure deck finish	non-skid paint
Cockpit deck finish	teak
Window frame	aluminium
Window material	tempered glass
Deckhatch	yes
Portholes	aluminium
Insulation	glasswool
Radar arch	collapsible
Fuel tank (litre)	steel 400
Fuel tank 2 (litre)	steel 400



Level indicator (fuel tank)	yes
Freshwater tank (litre)	polyethylene 750
Level indicator (freshwater)	yes
Blackwater tank (litre)	steel 300
Level indicator (blackwater)	yes
Blackwater tank extraction	deck extraction + pump
Wheel steering	hydraulic
Outside helm position	

## ACCOMMODATION

Cabins	2
Berths	5
Interior	teak
Floor	teak and holly + carpet
Aft deck	yes
Saloon	yes
Headroom saloon (m)	2.20
Heating	diesel ducted hot air Webasto
Heating 2	electric 220V
Dinette to convert into berth	yes
Opening door to aft deck	yes
Galley	yes
Countertop	Duropol
Sink	stainless steel
Cooker	ceramic 3 burner
Microwave	Panasonic
Fridge	1x 65l (2019), 1x 44l, 1x 65l
Hot water system	220V + engine
Water pressure system	electrical
Owners cabin	French bed
Bed length (m)	2.00 x 1.60



Wardrobe	hanging/drawers/shelves
Bathroom	en suite
Toilet	separate
Toilet system	electric
Wash basin	in the bathroom
Shower	separate
Guest cabin 1	double bed + single bed
Bed length (m)	2.00 x 1.20 + 2.00 x 0.70
Wardrobe	drawers and shelves
Bathroom	en suite
Toilet	en suite
Toilet system	manual
Wash basin	in the bathroom
Shower	en suite
Washing machine/dryer combi	Candy ALCB 1337

## MACHINERY

No of engines	1
Make	Iveco
Type	8060SM
HP	210
kW	154,00
Fuel	diesel
Year installed	2005
Engine hours	2550
Engine cooling system	freshwater heat exchanger
Drive	shaft
Engine controls	bowden cable
Gearbox	hydraulic
Bowthruster	electric Vetus 7hp
Sternthruster	electric Vetus 7hp



# SUCCES 125 ULTRA

Exhaust	watercooled
Thrust bearing	yes
Propeller type	fixed
Propeller blades	4
Propeller shaft material	stainless steel
Shaft lubrication	water
Electric bilge pump	2x
Generator	silent separator Whisper 8KVA
Start battery	12V/100Ah (2019)
Service battery	3x 12V/100Ah (2019)
Generator battery	yes
Bowthruster battery	12V/100Ah (2019)
Sternthruster battery	12V/100Ah (2019)
Battery monitor	yes
Battery charger/inverter	Victron Phoenix Multiplus 12V/ 2500VA/120AMP
Insulation transformer	Victron

## NAVIGATION

Compass	yes
Electric compass	Raymarine ST60
Depth sounder/log	Raymarine ST60 Tridata
VHF	Shipmate RS82
Rudder angle indicator	Raymarine ST60
Searchlight	yes

## EQUIPMENT

Fixed windscreen	yes
Sprayhood	yes
Bimini	yes
Winter cover	yes
Cockpit cushions	yes



# SUCCES 125 ULTRA

Cockpit table	yes
Cockpit chairs	yes
Bathing platform	yes
Boarding ladder	stainless steel
Transom door	yes
Bow ladder	yes
Deck shower	W+C
Anchor	Fortress
Anchor chain	yes
Windlass	electrical
Capstan	yes
Deck wash	yes
Davits	stainless steel
Davits controls	manual
Sea railing	stainless steel
Grab rail (superstructure)	stainless steel
Railing side opening gates	2x
Pushpit	yes
Pulpit	yes
Lifejackets	yes
Wiper	3x
Horn	electric
Spare parts	yes
Tools	yes
TV	yes
Radio	yes
DVD player	yes
Cockpit speakers	yes
Speakers in salon	yes
Clock - barometer	yes
Fire extinguisher	yes





# SUCCES 125 ULTRA





# SUCCES 125 ULTRA



# SUCCES 125 ULTRA





# SUCCES 125 ULTRA



# SUCCES 125 ULTRA





# SUCCES 125 ULTRA



# SUCCES 125 ULTRA





# SUCCES 125 ULTRA

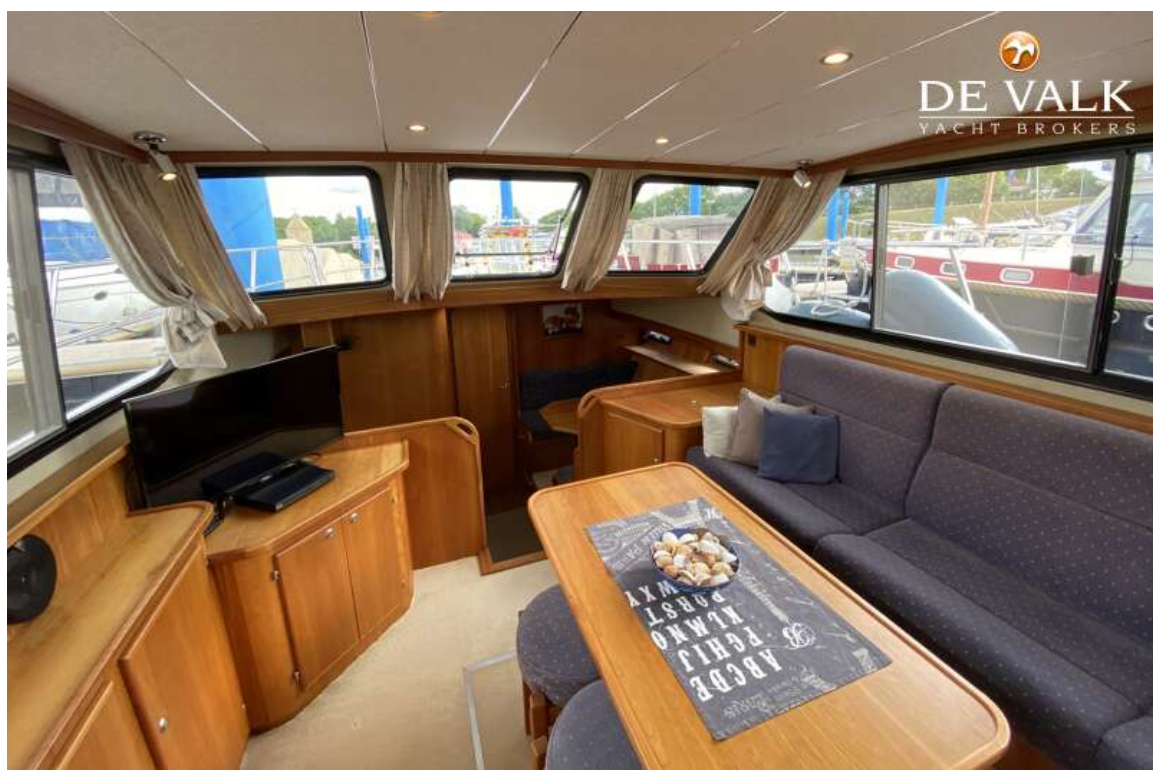


# SUCCES 125 ULTRA





# SUCCES 125 ULTRA



# SUCCES 125 ULTRA





# SUCCESS 125 ULTRA



# SUCCES 125 ULTRA





# SUCCES 125 ULTRA



# SUCCES 125 ULTRA

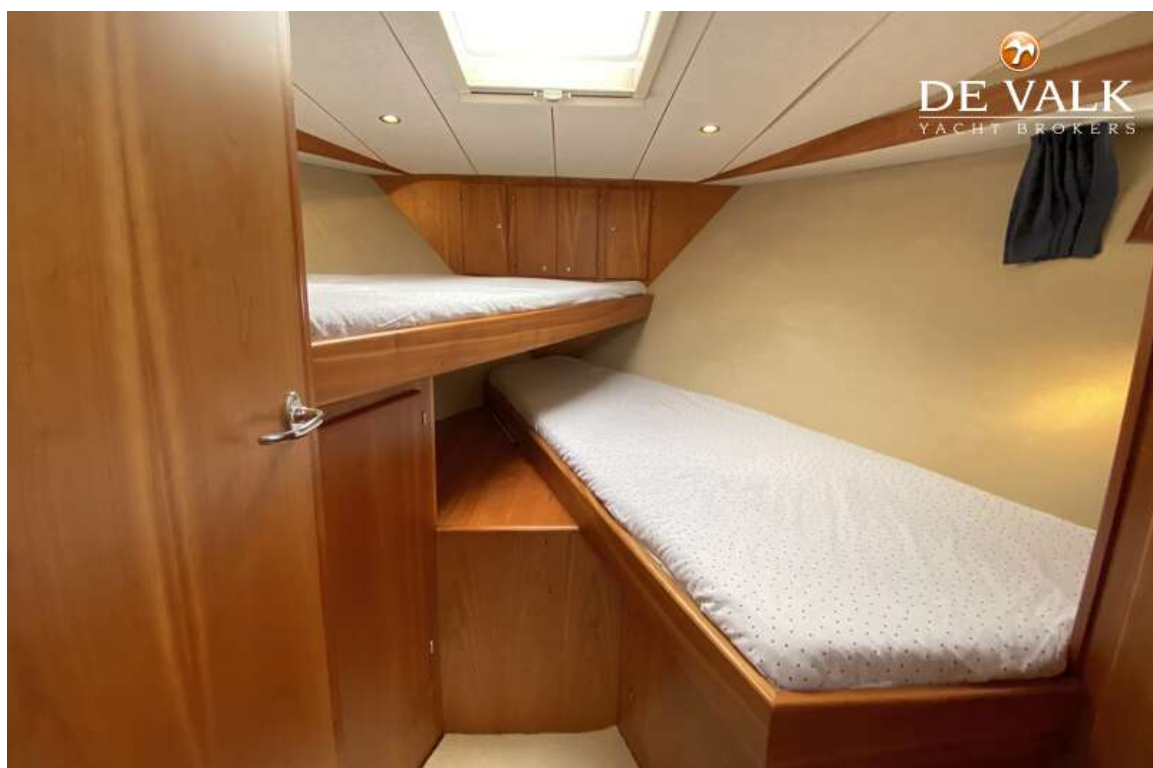
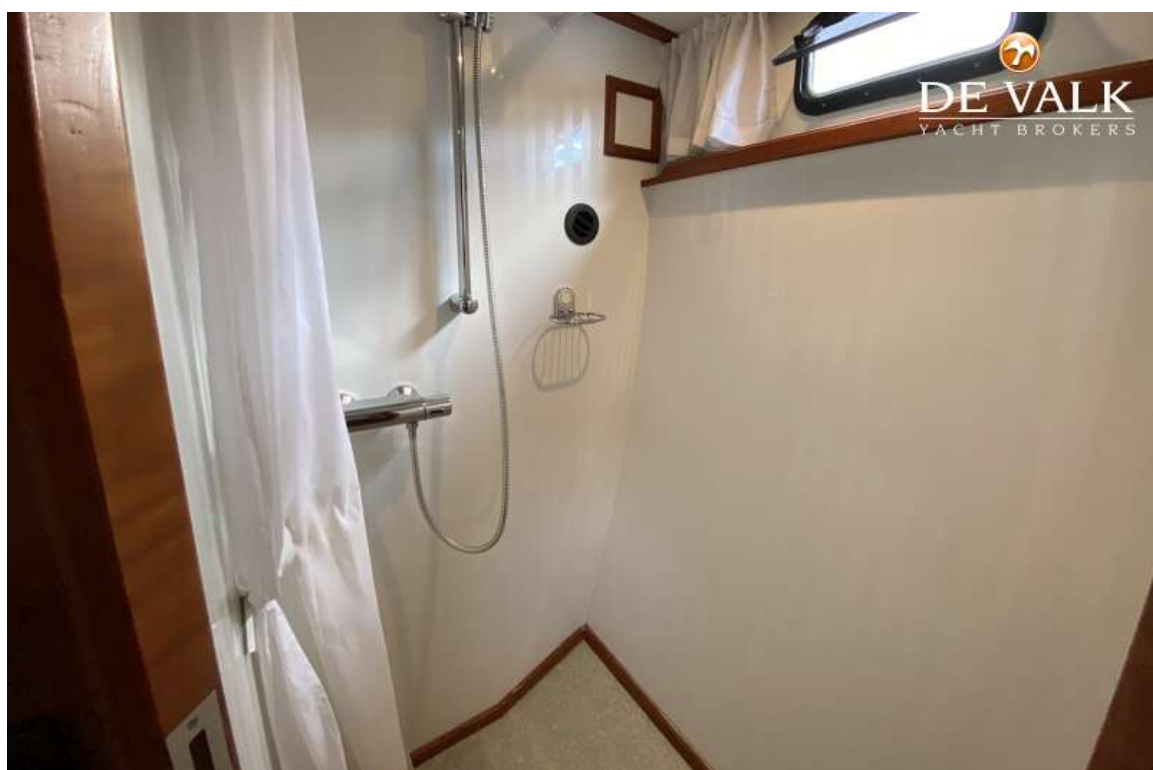




# SUCCES 125 ULTRA



# SUCCES 125 ULTRA



# SUCCES 125 ULTRA



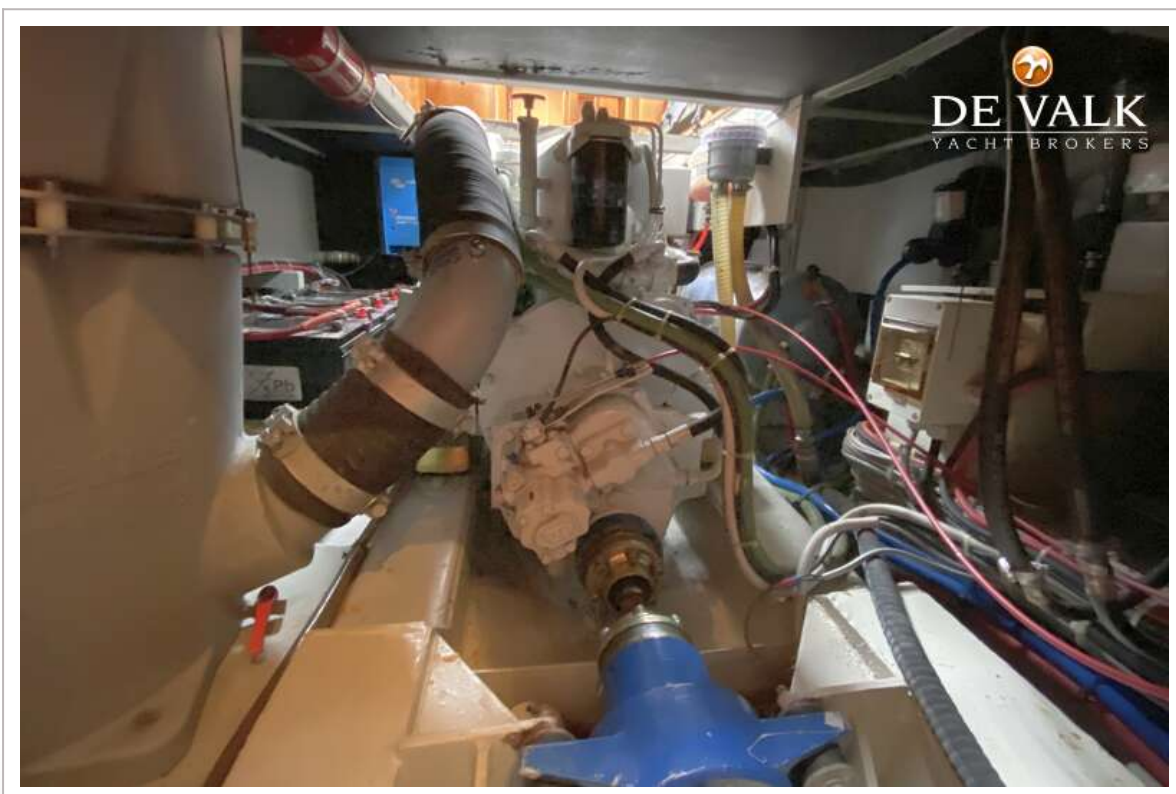
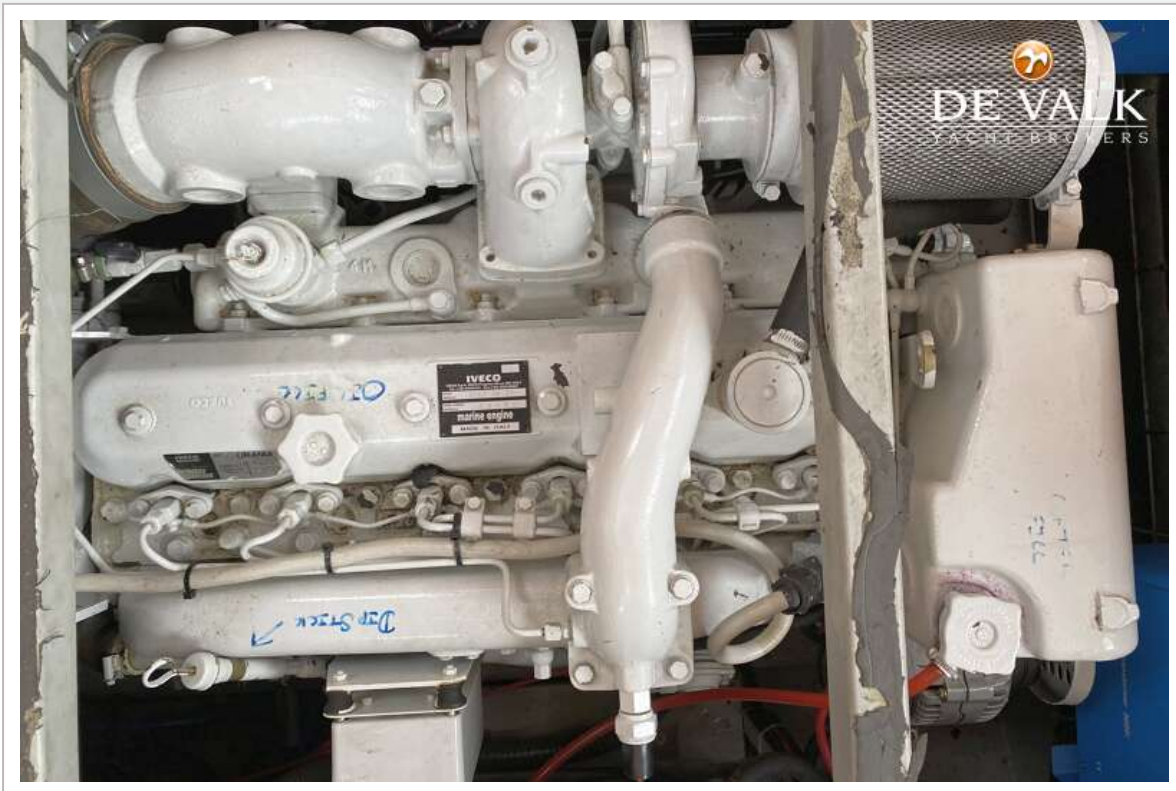


# SUCCES 125 ULTRA





# SUCCES 125 ULTRA



# SUCCES 125 ULTRA

