



DE VALK
YACHT BROKERS



FUNCRAFT 1300 FLY



DE VALK
YACHT BROKERS

BROKERAGE | CHARTER | BERTHS | FINANCE | INSURANCE | YACHT MANAGEMENT

FUNCRAFT 1300 FLY

BROKER'S COMMENTS

Spacious flybridge motor yacht with good accommodations for a longer stay on board. Galley and saloon on one level with lots of light and a panoramic view of the surroundings. Large owner's cabin in the back (with space to install an extra shower and toilet). In the bow of this Funcraft 1300 Fly you have a spacious guest cabin and a possibility for a storage room or extra guest cabin, the preparations for washing machine are there. The complete electric installation has been renewed, also the Victron charger/converter. The steel hull professionally built by Jachtbouw Van Meyeren.

Jochem Heijermans

SPECIFICATIONS

Dimensions	14.00 x 4.00 x 1.25 (m)	Builder	Jachtbouw Van Meyeren
Built	1993	Cabins	2
Material	Steel	Berths	4
Engine(s)	1 x DAF 615 diesel	Hp/Kw	130.00 (hp), 95.55 (kw)
Asking price	sold (VAT)	Lying	elsewhere / Not at sales office

CONTACT

Sales office	De Valk Belgium	Telephone	+32 586 80 218
Address	1401 PT Nieuwpoort BE	E-mail	belgium@devalk.nl

DISCLAIMER

These particulars are given in good faith as supplied but cannot be guaranteed.



GENERAL

Model	FUNCRAFT 1300 FLY
Type	motor yacht
LOA (m)	14,00
LWL (m)	13,00
Beam (m)	4,00
Draft (m)	1,25
Air draft (m)	3,45
Headroom (m)	1,93
Year built	1993
Builder	Jachtbouw Van Meyeren
Country	The Netherlands
Designer	Van Meyeren
Displacement (t)	14
CE norm	NA
Hull material	steel
Hull colour	white
Hull shape	hard chine
Superstructure material	steel
Rubbing strake	steel
Deck material	steel
Deck finish	non-skid paint (2019)
Superstructure deck finish	paint (2019)
Cockpit deck finish	non-skid paint (2019)
Antifouling (year)	(2020)
Window frame	aluminium
Window material	glass
Deckhatch	yes
Portholes	aluminium
Insulation	foam
Flybridge	yes



Flybridge cover	(2018)
Flybridge cockpit cover	(2018)
Fuel tank (litre)	stainless steel 1000
Level indicator (fuel tank)	yes
Freshwater tank (litre)	stainless steel 1000
Level indicator (freshwater)	yes
Blackwater tank (litre)	stainless steel 750 (not connected)
Blackwater tank extraction	deck extraction + pump
Wheel steering	hydraulic
Flybridge helm position	hydraulic
More info on paintwork	(2019)

ACCOMMODATION

Cabins	2
Berths	4
Interior	mahogany
Floor	teak and holly
Aft deck	yes
Saloon	yes
Headroom saloon (m)	1.94
Heating	2x petrolium
Aft Cabin	yes
Dinette	yes
Opening door to aft deck	yes
Galley	yes
Countertop	plastic
Sink	stainless steel
Cooker	calor gas Smev 4 burner
Oven	Moulimex (2017)
Microwave	yes
Fridge	1x (2017) + 1x (2018)



FUNCRAFT 1300 FLY

Freezer	yes
Hot water system	220V Boiler
Water pressure system	electrical
Ice maker	yes
Coffee maker	yes
Owners cabin	double bed
Bed length (m)	1,96 x 1,40
Wardrobe	hanging
Bathroom	shared
Toilet	shared
Toilet system	manual Electrical system not installed
Wash basin	in the cabin
Shower	shared
Guest cabin 1	single bed
Bed length (m)	2,20 x 1,24
Extra info	LED Lights

MACHINERY

No of engines	1
Make	DAF
Type	615
HP	130
kW	95,55
Fuel	diesel
Year installed	1993
Maximum speed (kn)	8
Cruising speed (kn)	7
Consumption (l/hr)	5
Engine hours	2897
Engine cooling system	freshwater heat exchanger
Drive	shaft



Engine controls	bowden cable
Gearbox	hydraulic Newage
Bowthruster	electric 8PK
Exhaust	watercooled
Propeller blades	4
Shaft lubrication	grease
Manual bilge pump	yes
Electric bilge pump	yes
Bilge alarm	yes
Electrical installation	12V/24V/220V
Start battery	4x AGM 12V/185Ah (2017)
Service battery	4x AGM 12V/185Ah (2017)
Battery charger/inverter	Victron (24V/3000W/70Ah) (2017)
Shorepower	with cable
Insulation transformer	Victron 3600W (2017)
Extra info	Electrical installation renewed (2016)

NAVIGATION

Compass	yes
Depth sounder	yes
Log	Navman Fish 4431
Fish finder	Navman Fish 4431
VHF	Standard Horizon
VHF handheld	Standard Horizon
Rudder angle indicator	Vetus
Navigation lights	yes

EQUIPMENT

Fixed windscreen	yes
Cockpit cover	(2018)
Bimini	(2018)



Cockpit table	2x
Cockpit chairs	yes
Bathing platform	yes
Boarding ladder	stainless steel
Deck shower	(Not installed)
Anchor	
Anchor chain	60m
Windlass	manual Lofrans
Capstan	yes
Davits	aluminum
Davits controls	manual
Sea railing	steel
Grab rail (superstructure)	stainless steel
Railing side opening gates	2x
Pushpit	yes
Pulpit	yes
Lifejackets	yes
Lifebuoy	yes
Wiper	yes
Horn	electric
Fenders	yes
Mooring lines	yes
Spare parts	yes
Tools	yes
TV	Medion (2018)
TV receiver	TV Vlaanderen (abbo not included)
Clock - barometer	yes
Fire extinguisher	2x (2017)
Extra info	Dehumidifier (2019)



FUNCRAFT 1300 FLY



FUNCRAFT 1300 FLY



FUNCRAFT 1300 FLY



FUNCRAFT 1300 FLY



FUNCRAFT 1300 FLY



FUNCRAFT 1300 FLY



FUNCRAFT 1300 FLY



FUNCRAFT 1300 FLY



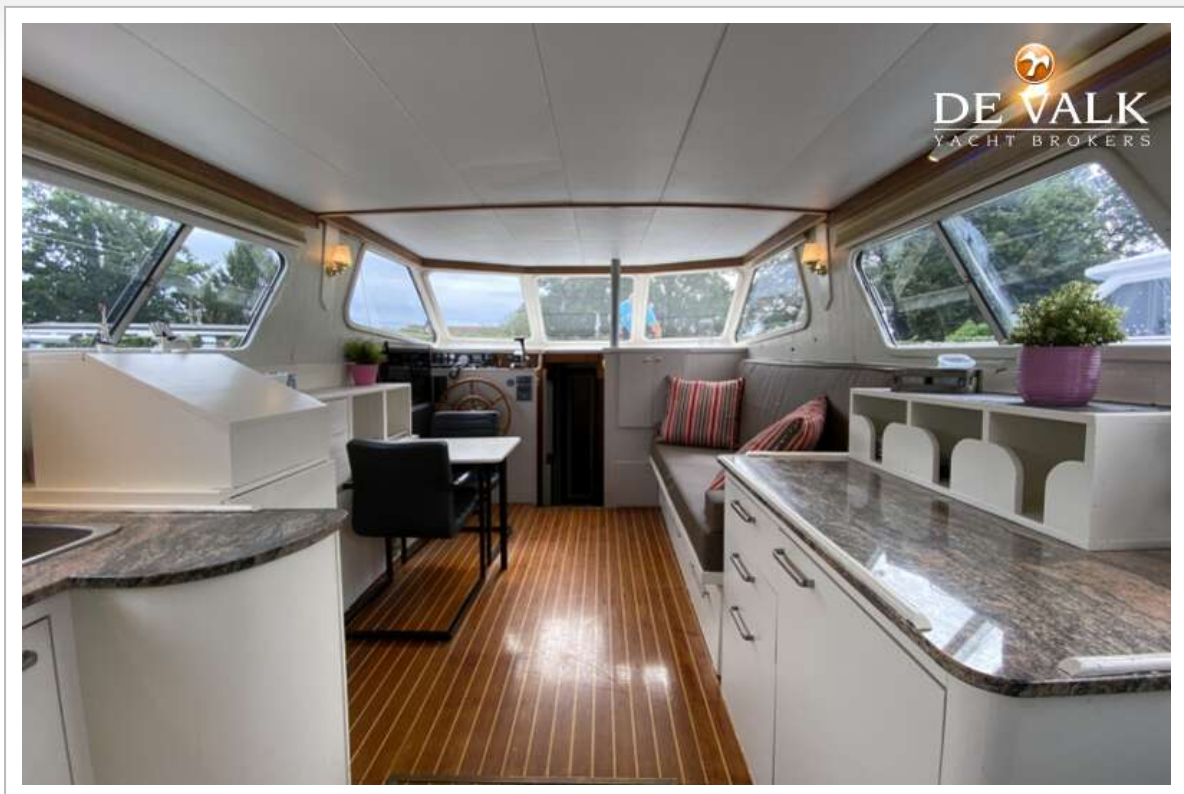
FUNCRAFT 1300 FLY



FUNCRAFT 1300 FLY



FUNCRAFT 1300 FLY



FUNCRAFT 1300 FLY



FUNCRAFT 1300 FLY



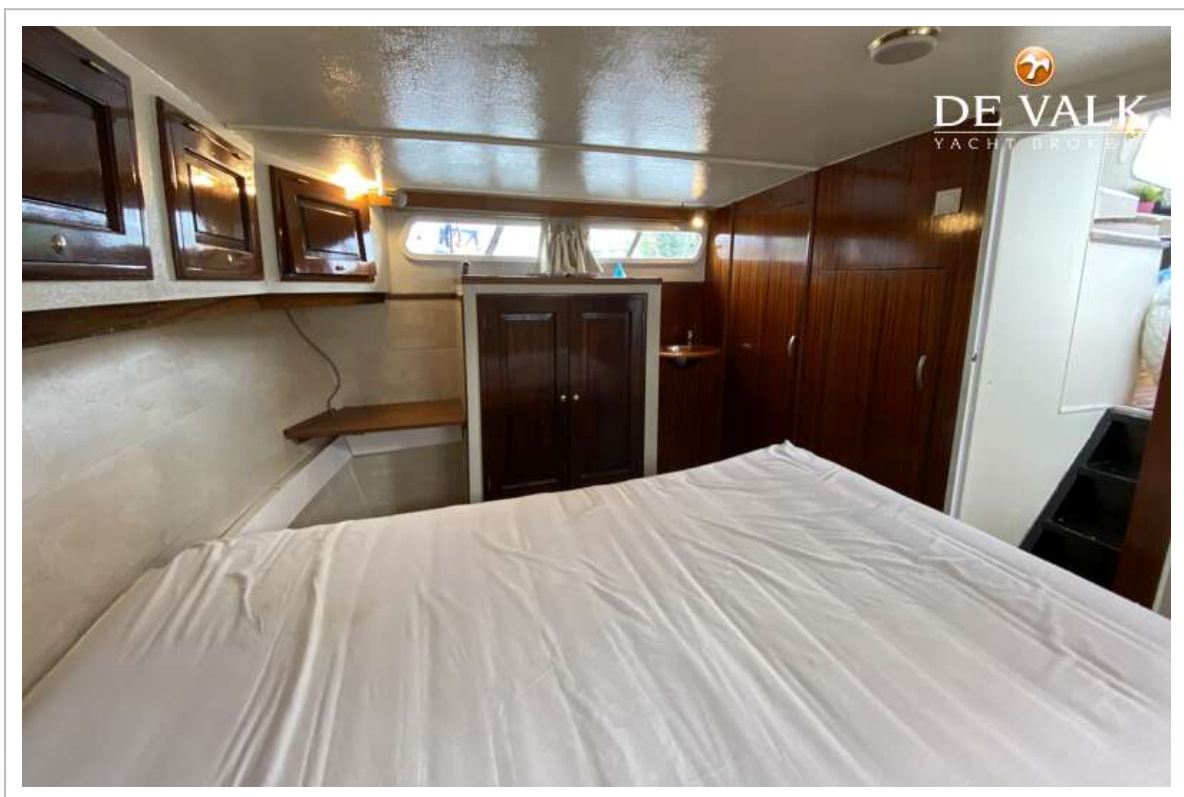
FUNCRAFT 1300 FLY



FUNCRAFT 1300 FLY



FUNCRAFT 1300 FLY



FUNCRAFT 1300 FLY



FUNCRAFT 1300 FLY



