



LUXE MOTOR 24.95 M

  
**DE VALK**  
YACHT BROKERS

# LUXE MOTOR 24.95 M

## BROKER'S COMMENTS

Beautifully built Luxe Motor 24.95 called "Victoria" by shipyard SRF in Harlingen. The "Victoria" is unique because of its exclusive and luxurious finish which is reflected in the beautiful design, equipment and interior. This lux Motor is powered by a strong and reliable John Deere diesel engine with a hybrid drive from Fischer Panda also the "Victoria" is equipped with telescopic spud poles. The interior is fully equipped, so it is also very pleasant to stay longer on board or even for permanent living.

*Jochem Heijermans*

## SPECIFICATIONS

<b>Dimensions</b>	24.95 x 4.95 x 1.20 (m)	<b>Builder</b>	SRF HARLINGEN
<b>Built</b>	2014	<b>Cabins</b>	3
<b>Material</b>	Steel	<b>Berths</b>	6
<b>Engine(s)</b>	1 x John Deere 6068tfm 75 delec	<b>Hp/Kw</b>	200.00 (hp), 147.00 (kw)
<b>Asking price</b>	sold (VAT )	<b>Lying</b>	elsewhere / Not at sales office

## CONTACT

<b>Sales office</b>	De Valk Belgium	<b>Telephone</b>	+32 586 80 218
<b>Address</b>	1401 PT Nieuwpoort BE	<b>E-mail</b>	belgium@devalk.nl

## DISCLAIMER

These particulars are given in good faith as supplied but cannot be guaranteed.



# LUXE MOTOR 24.95 M

## GENERAL

Model	LUXE MOTOR 24.95 M
Type	motor yacht
LOA (m)	24,95
Beam (m)	4,95
Draft (m)	1,20
Air draft (m)	3,40
Air draft min (m)	2,80
Headroom (m)	2,00
Year built	2014
Builder	SRF HARLINGEN
Country	The Netherlands
Designer	Gaastmeer Design
Displacement (t)	85
Ballast (tonnes)	18
Hull material	steel
Hull colour	black
Hull thickness (mm)	8mm
Hull shape	flat bottom
Bilge keels	yes
Superstructure material	steel
Superstructure (mm)	6mm
Rubbing strake	steel
Deck material	steel
Deck finish	paint
Superstructure deck finish	paint
Cockpit deck finish	teak
Dorades	yes
Window frame	mahogany
Window material	double glazing
Deckhatch	yes



# LUXE MOTOR 24.95 M

Portholes	steel
Insulation	foam
Mast can be lowered	manual
Fuel tank (litre)	steel 2x 1500 white diesel
Fuel tank 2 (litre)	steel 2x 1500 crude diesel
Level indicator (fuel tank)	yes
Freshwater tank (litre)	stainless steel 3000
Level indicator (freshwater)	yes
Blackwater tank (litre)	stainless steel 3000
Level indicator (blackwater)	yes
Blackwater tank extraction	pump
Wheel steering	hydraulic + remote control
More info on paintwork	Two component paint system

## ACCOMMODATION

Cabins	3
Berths	6
Interior	mahogany
Floor	wood Hardwood + carpet
Aft deck	yes
Pilot house	yes
Saloon	yes
Headroom saloon (m)	2.00
Heating	central heating Mariteam Booster + Webasto central heating (diesel)
Heating 2	floor heating
Navigation center	yes
Chart table	yes
Aft Cabin	yes
Dinette	yes
Opening door to aft deck	yes



# LUXE MOTOR 24.95 M

Galley	yes
Countertop	granite
Sink	stainless steel 2x
Cooker	induction Atag 4-burner
Extractor	yes
Microwave/oven combi	yes
Fridge	Liebherr + freezing compartment
Hot water system	220V/engine/heating ACV water heater 60L
Water pressure system	2x hydrophore
Dishwasher	Miele
Owners cabin	French bed
Bed length (m)	2.00 x 1.70
Wardrobe	hanging/drawers/shelves
Bathroom	en suite
Toilet	en suite
Toilet system	electric
Wash basin	in the bathroom
Shower	en suite
Guest cabin 1	twin single 2.00 x 0.90
Wardrobe	hanging/drawers/shelves
Bathroom	shared
Toilet	separate
Toilet system	electric
Wash basin	in the bathroom
Shower	shared
Guest cabin 2	bunk bed
Bed length (m)	2.00 x 0.90
Wardrobe	hanging/drawers/shelves
Washing machine	Miele

## MACHINERY



# LUXE MOTOR 24.95 M

No of engines	1
Make	John Deere
Type	6068tfm 75
HP	200
kW	147,00
Fuel	diesel electric
Year installed	2013
Maximum speed (kn)	8
Cruising speed (kn)	6
Consumption (l/hr)	6
Engine hours	600
Engine cooling system	hopper cooling
Drive	shaft
Engine controls	electrical
Gearbox	hydraulic PRM
kW	yes
Bowthruster	hydraulic Sidepower 30hp
Electric hybride drive	Fischer Panda 48V
Exhaust	dry
Propeller type	fixed
Propeller blades	5
Propeller shaft material	stainless steel
Shaft lubrication	grease Grease lubricator
Electric bilge pump	4x
Electrical installation	12V/24V/48V/230V
Generator	silent separator Mitsubishi 13.5 kVA
Running hours generator	Circa 120
Batteries	48V/490Ah full traction
Start battery	yes
Service battery	yes
Electric engine battery	48V
Generator battery	yes



# LUXE MOTOR 24.95 M

Battery monitor	Victron BMV 700 accu monitor + 2x Victron Skylla control
Battery charger	- Victron Titan 48V/50Amp - Victron Phoenix 24V/25Amp
Battery charger/inverter	Victron Quattro Combi 48V/5000W/70Amp
Diode battery combiners	yes
Shorepower	with cable
Insulation transformer	Victron 7000W
Extra info	2x hydraulic telescopic spudpoles, approx. 1.80 under the hull
Extra info	Diesel engine adjustable 158hp-200hp

## NAVIGATION

Electric compass	Raymarine P70R
Depth sounder	2x Raymarine
Depth sounder/log	yes
Log	Raymarine
Windset	Raymarine
VHF	Raymarine
VHF handheld	yes
Autopilot	Raymarine P70R
Rudder angle indicator	yes
GPS	Raymarine
Personal computer	yes
AIS receiver	Raymarine
AIS transceiver	Saab Professional
Camera	yes
Navigation lights	yes
Searchlight	yes

## EQUIPMENT

Cockpit cover	yes
Bimini	yes
Cockpit table	yes



# LUXE MOTOR 24.95 M

Cockpit chairs	yes
Gangway	yes
Anchor	2x
Anchor chain	2x 40m
Windlass	hydraulic
Capstan	yes
Deck wash	yes
Dinghy	Zodiac RIB
Outboard	Yamaha 6PK
Deck crane	hydraulic 1.200kg
Sea railing	steel
Railing side opening gates	2x
Pushpit	yes
Pulpit	yes
Lifejackets	yes
Lifebuoy	yes
Wiper	yes
Horn	electric
Radar reflector	yes
Fenders	yes
Mooring lines	yes
TV	yes
Radio	yes
Surround Sound System	yes
Fire extinguisher	yes
Auto extinguisher system	yes
Extra info	yes



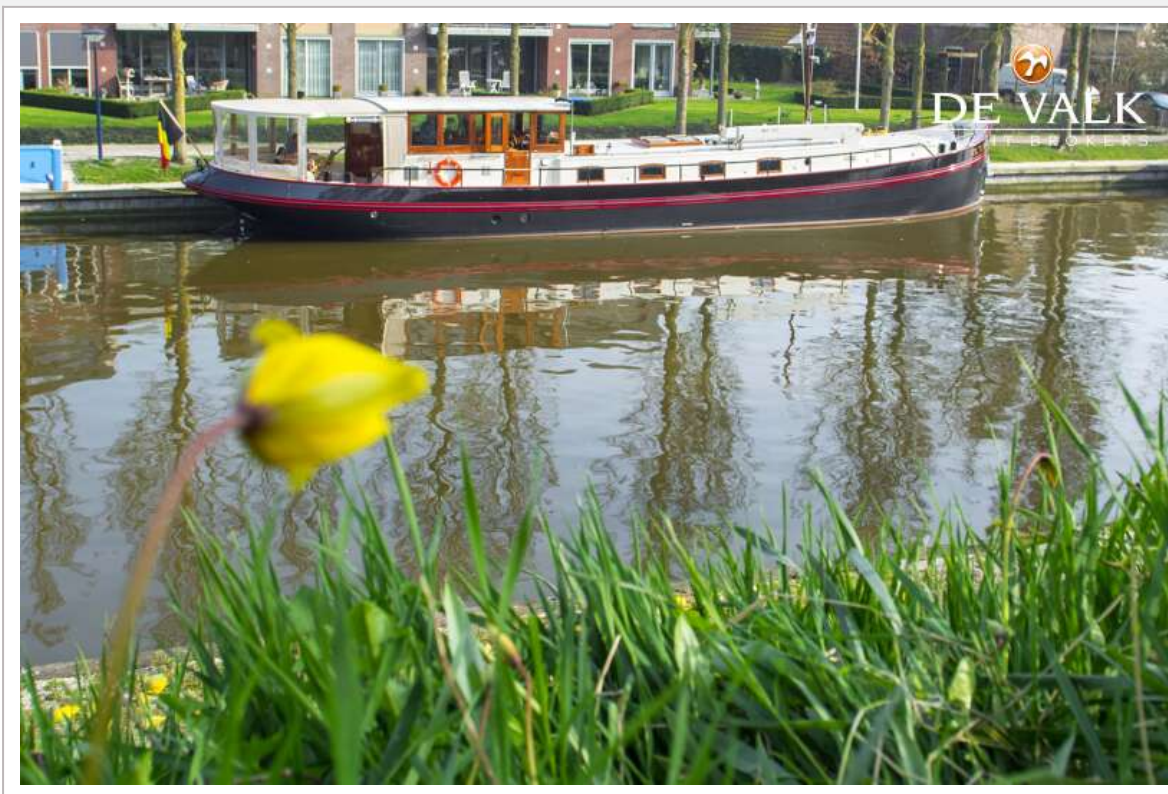


# LUXE MOTOR 24.95 M





# LUXE MOTOR 24.95 M

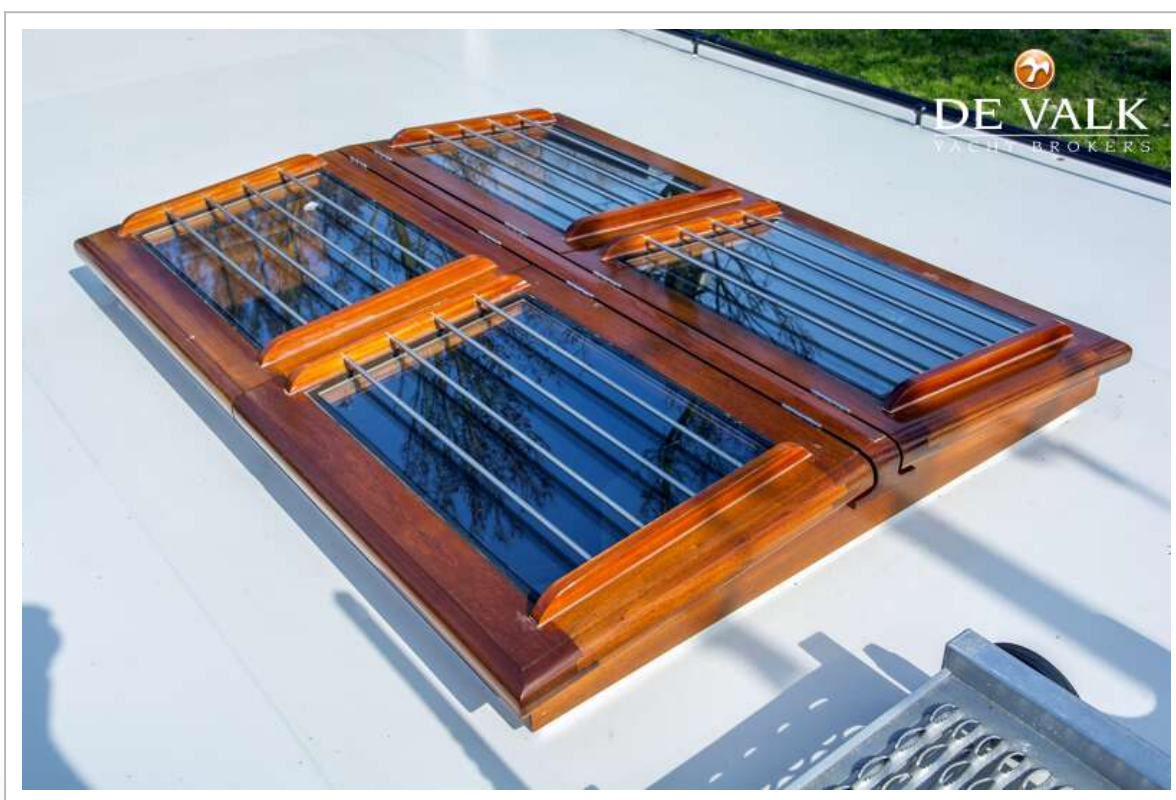
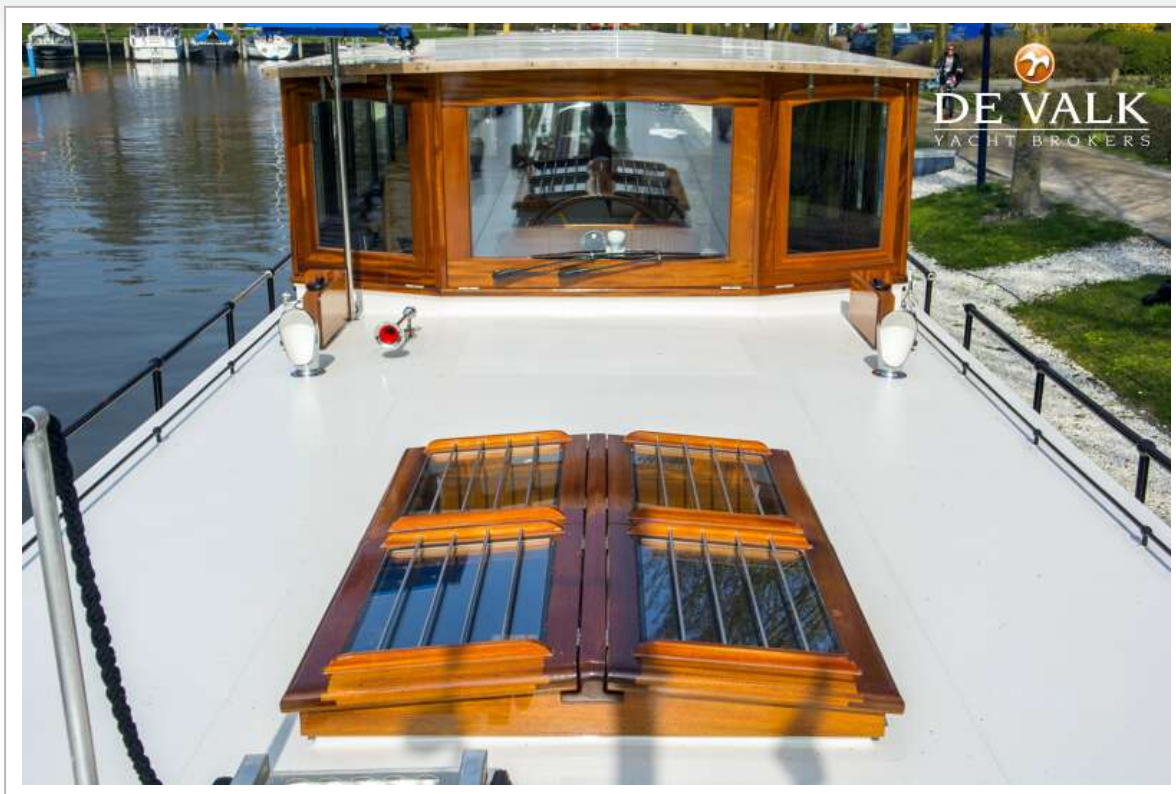


# LUXE MOTOR 24.95 M





# LUXE MOTOR 24.95 M



## LUXE MOTOR 24.95 M

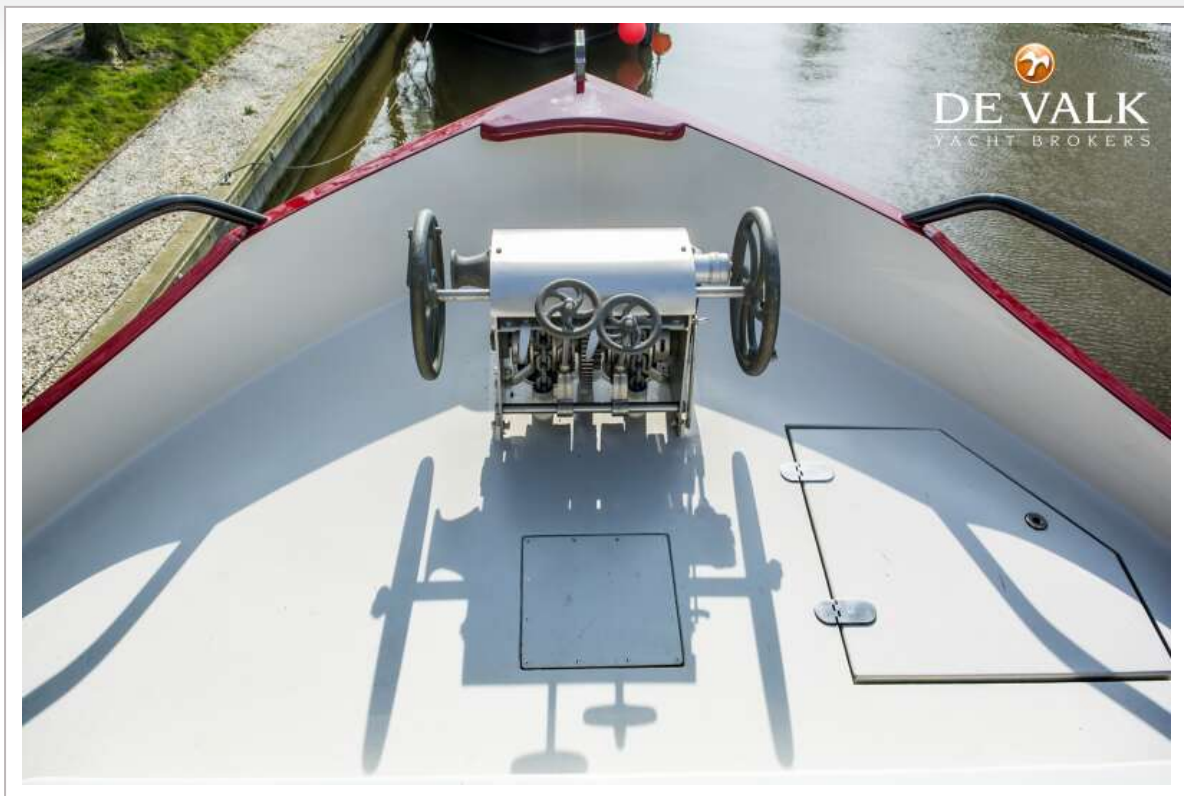




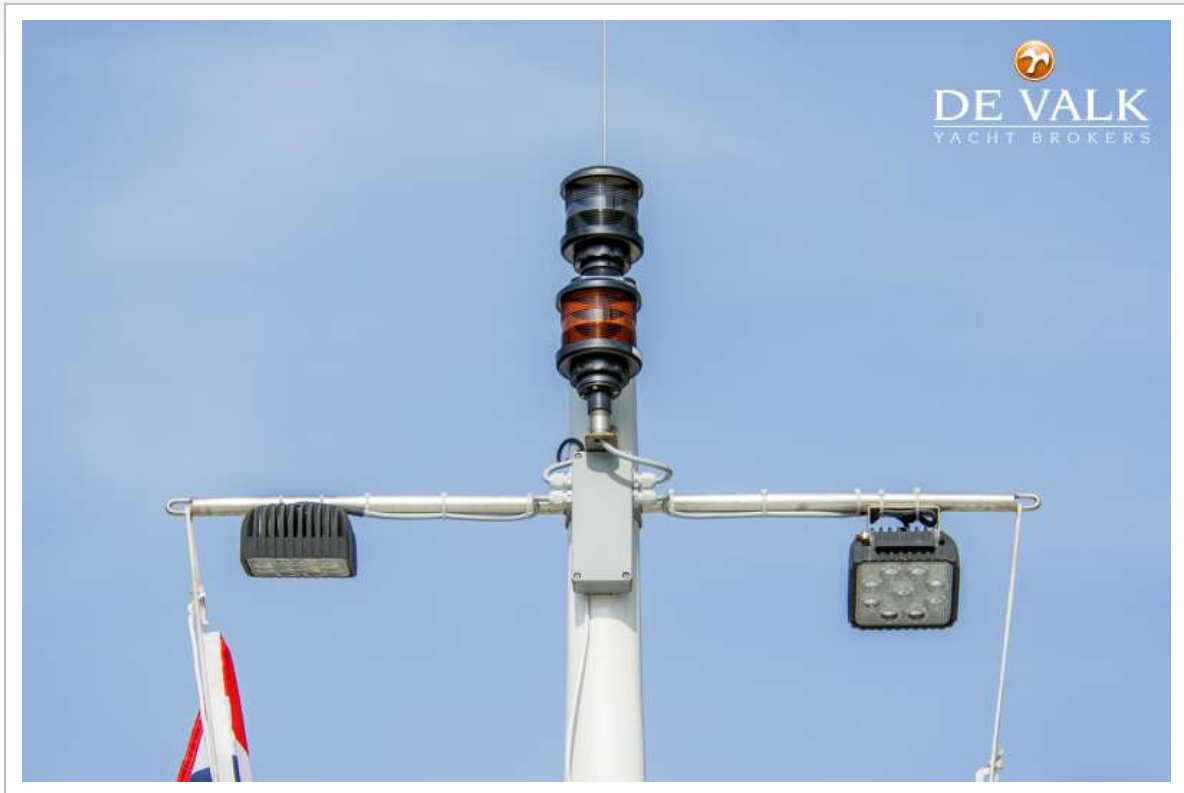
# LUXE MOTOR 24.95 M



# LUXE MOTOR 24.95 M



## LUXE MOTOR 24.95 M

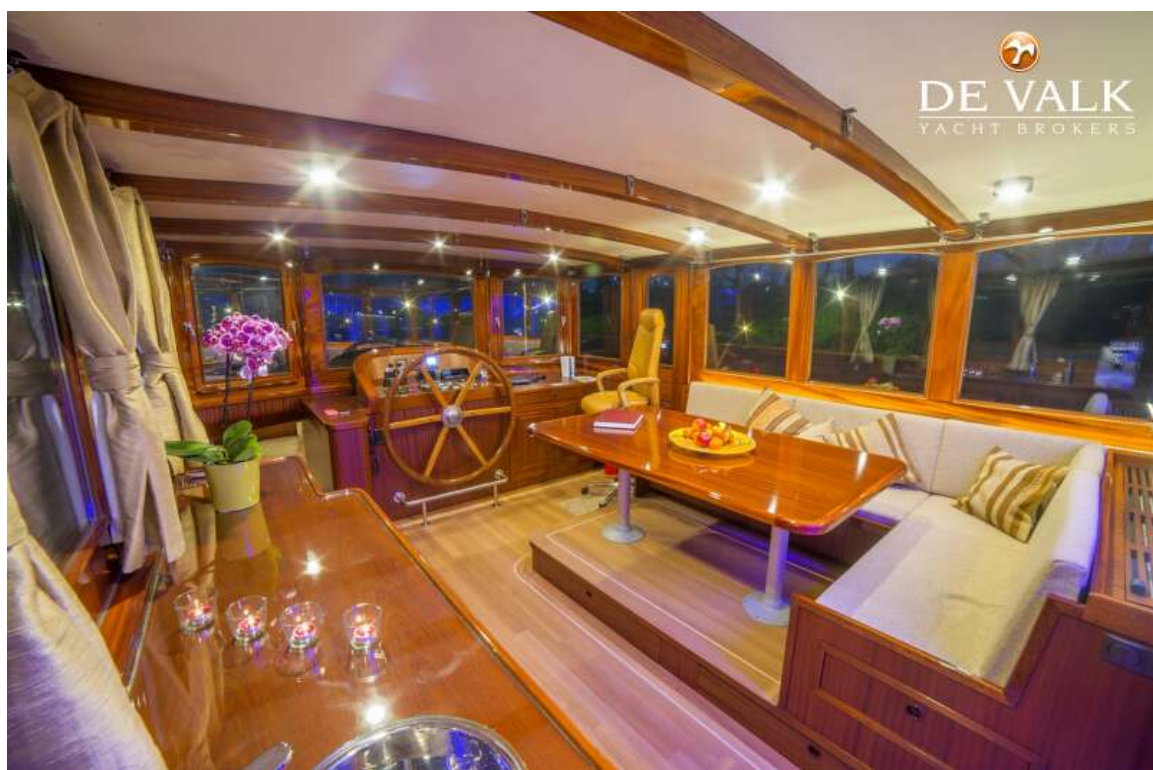




## LUXE MOTOR 24.95 M

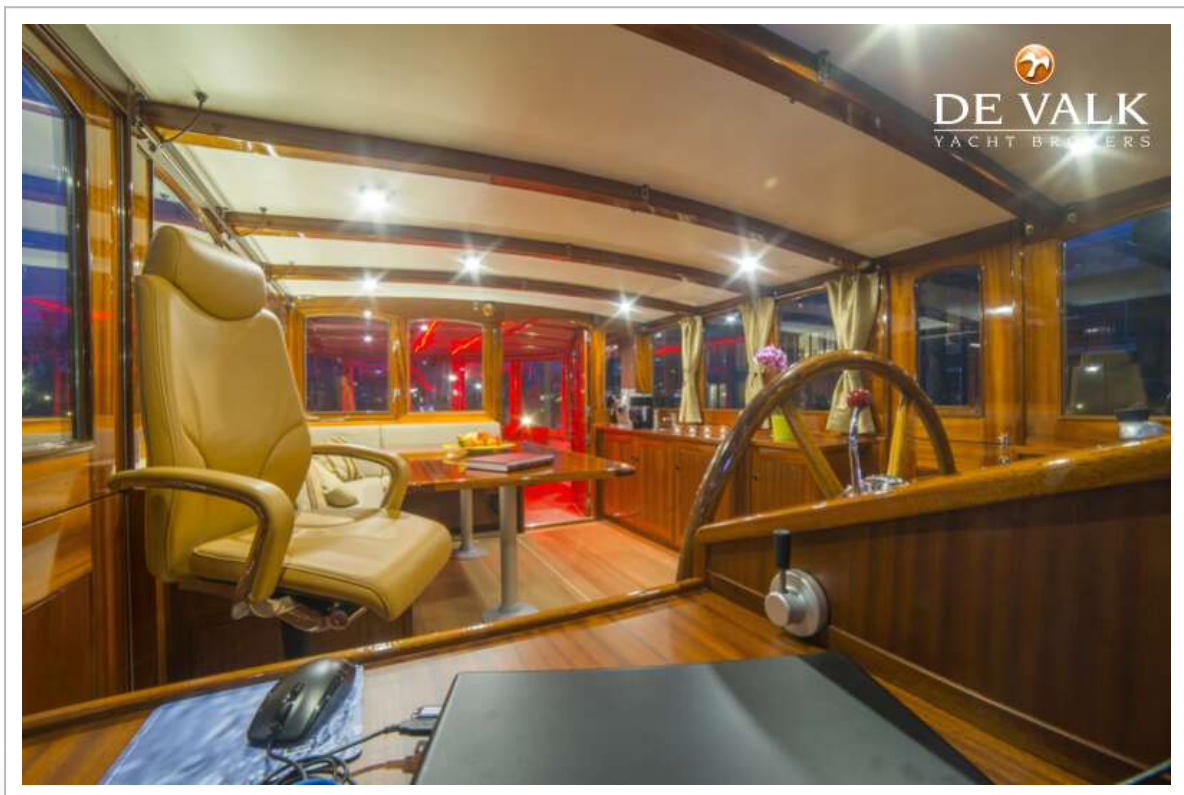


## LUXE MOTOR 24.95 M

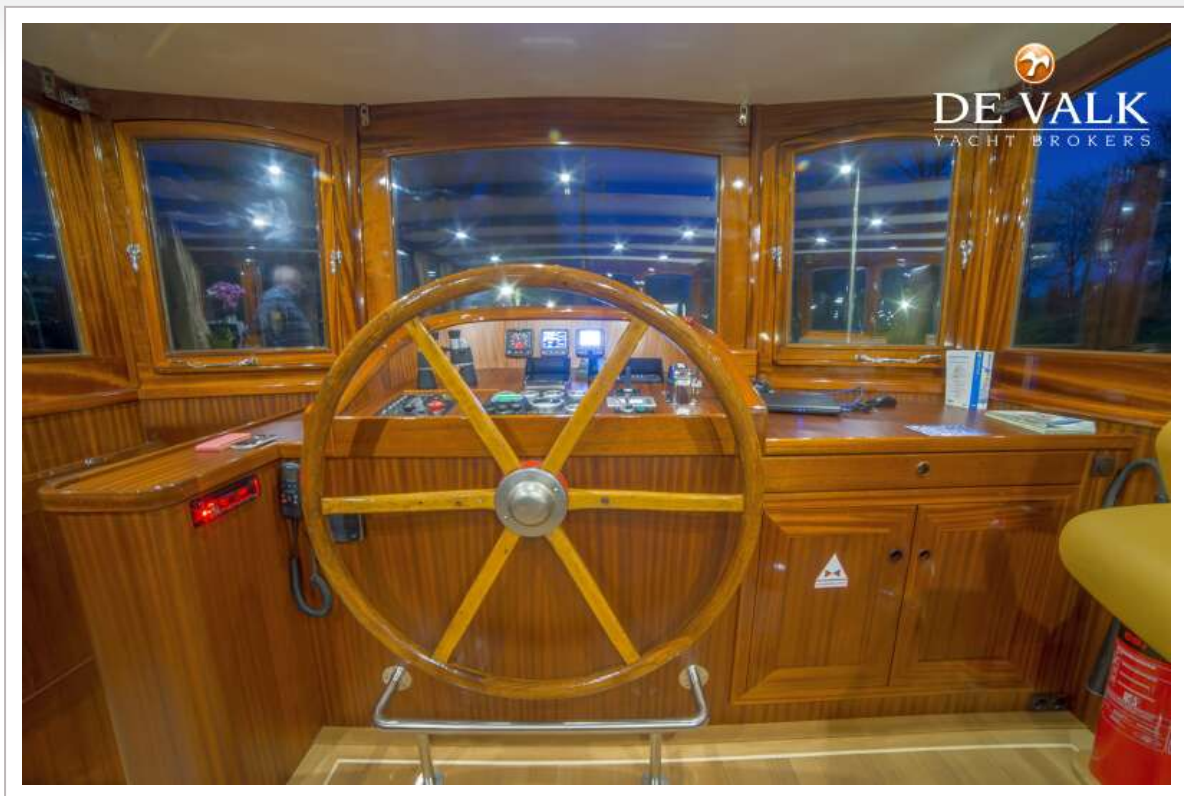




## LUXE MOTOR 24.95 M

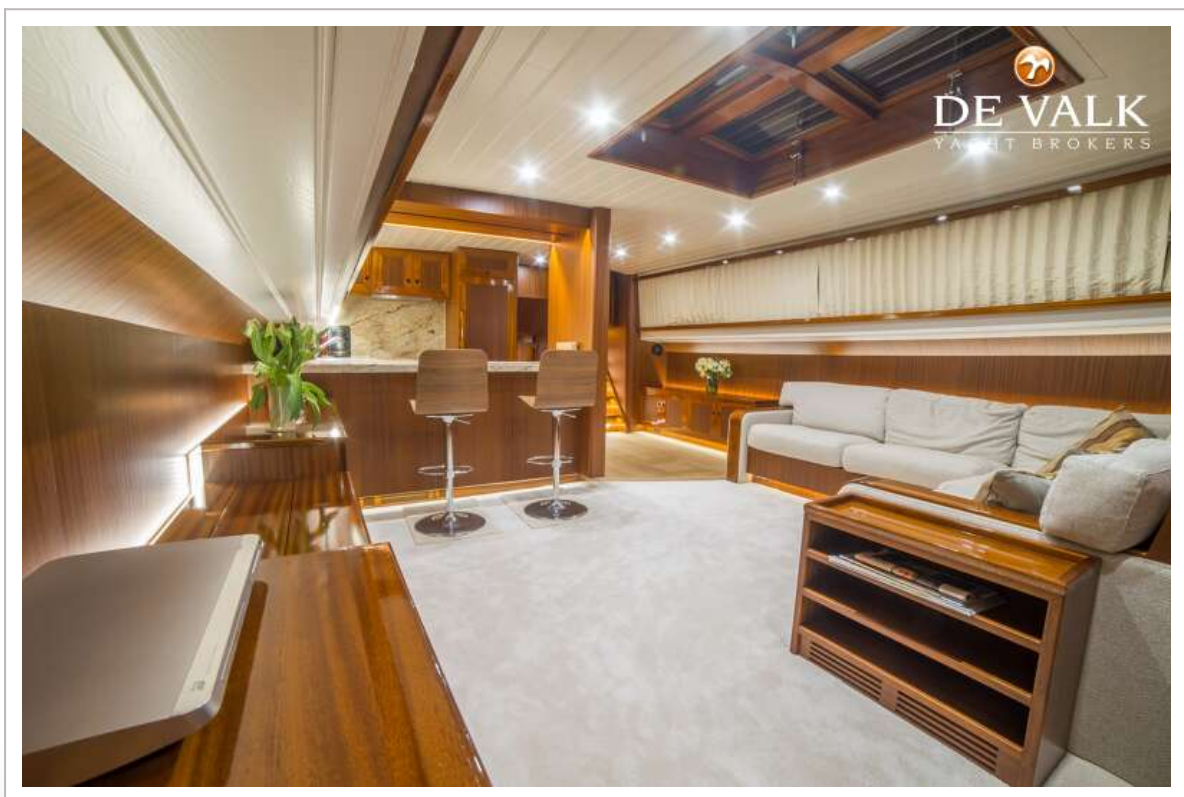


## LUXE MOTOR 24.95 M





# LUXE MOTOR 24.95 M

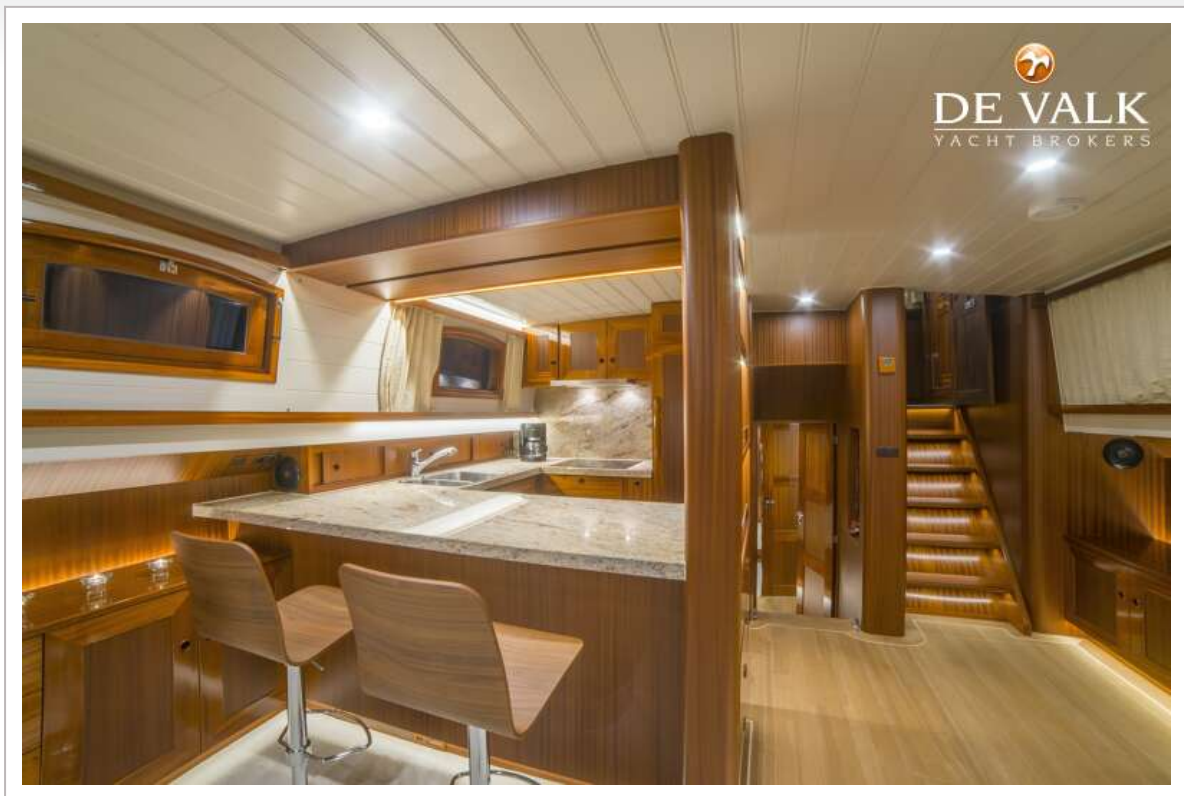


# LUXE MOTOR 24.95 M

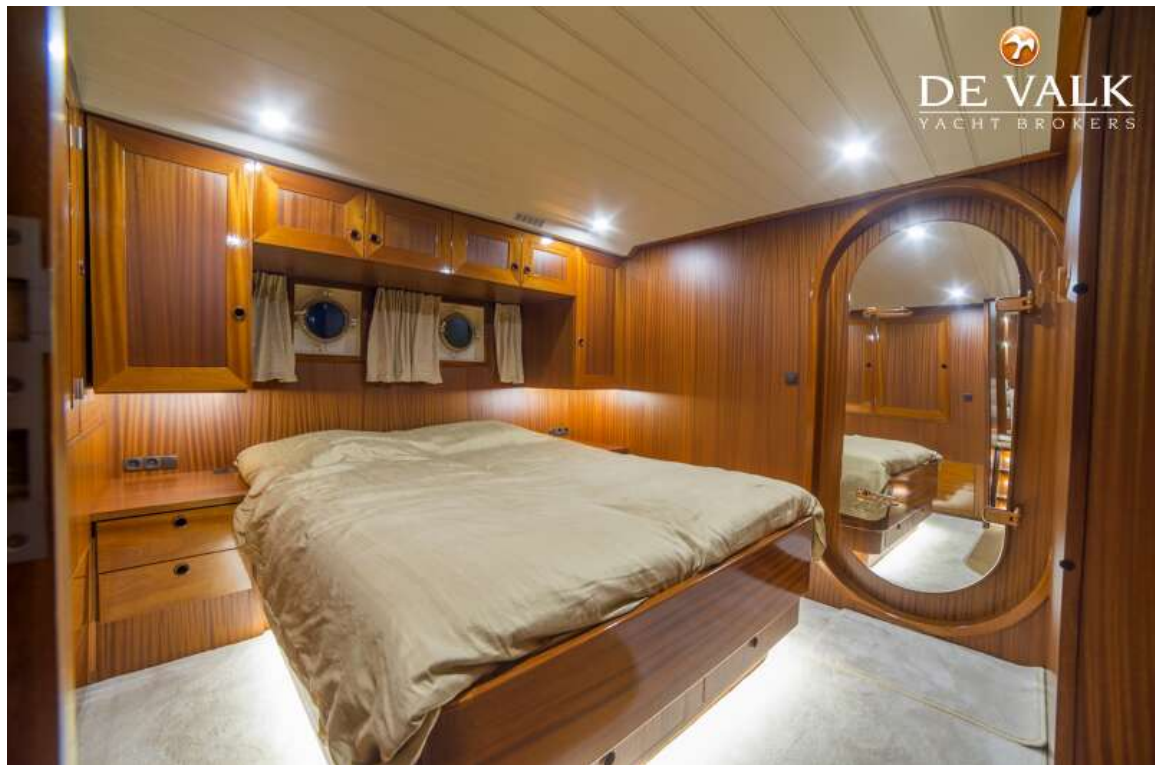




# LUXE MOTOR 24.95 M

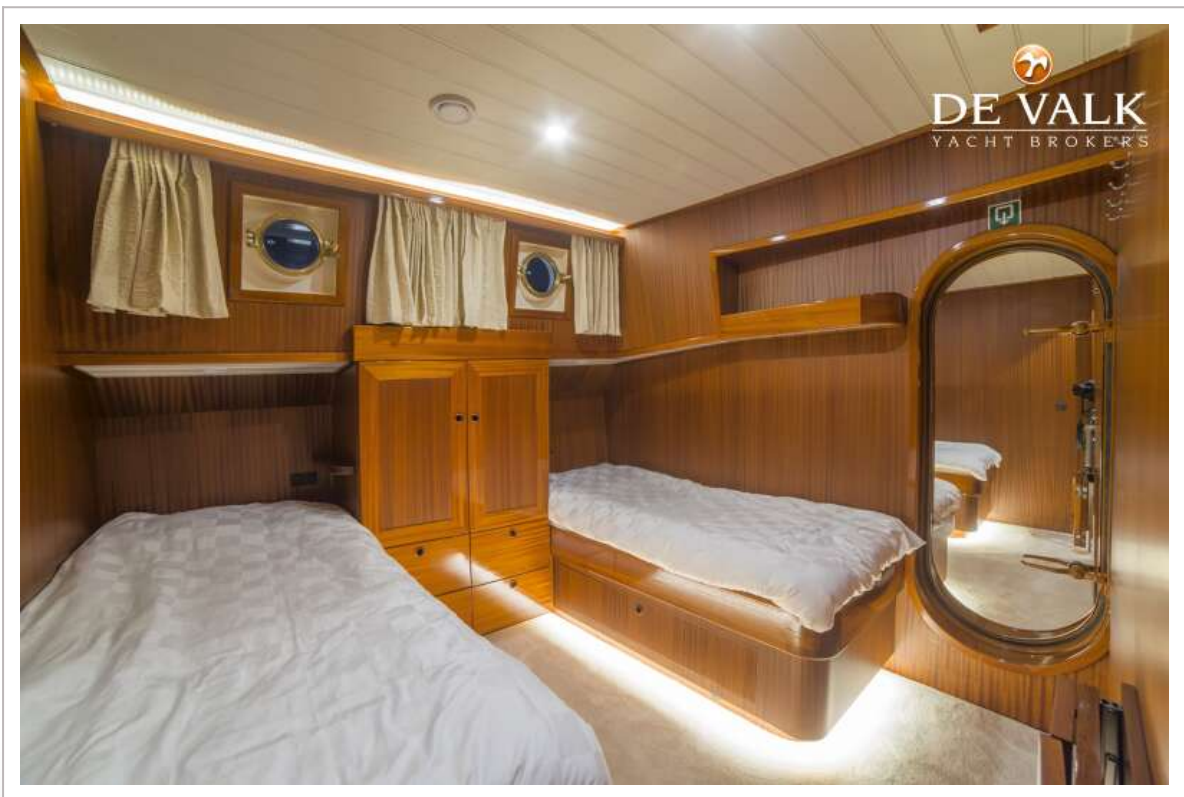


## LUXE MOTOR 24.95 M





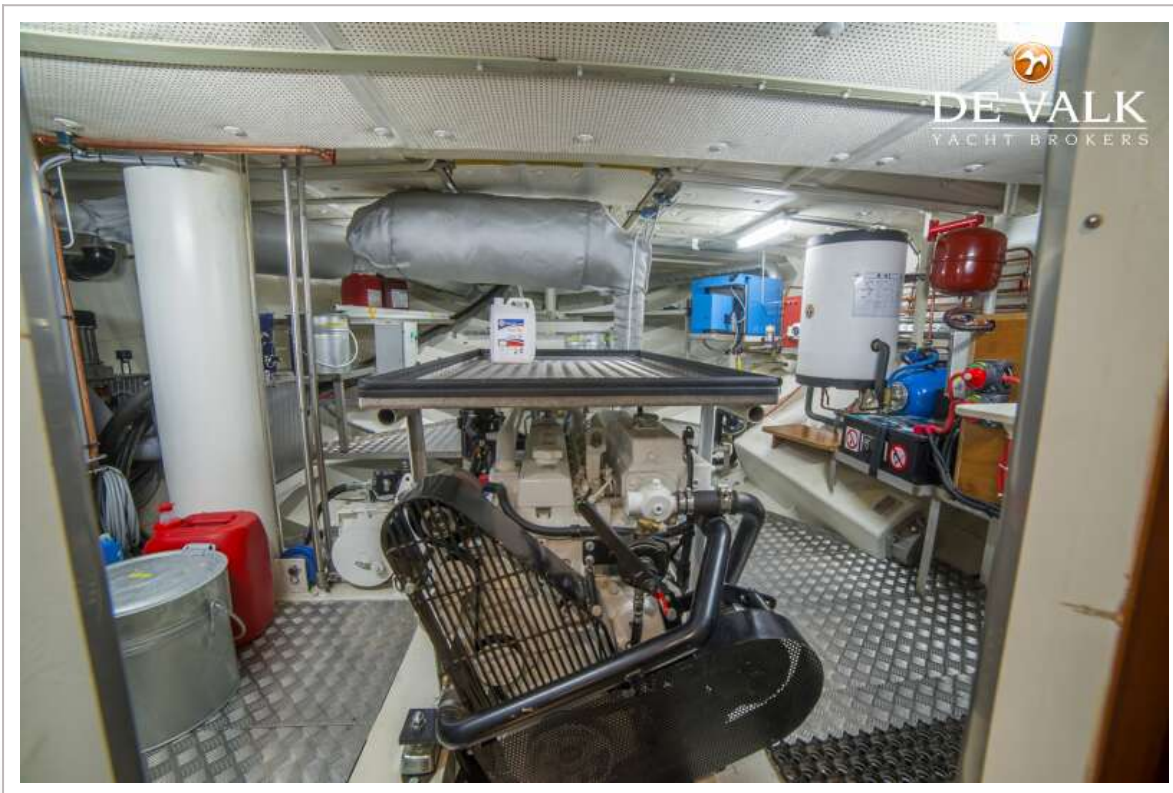
## LUXE MOTOR 24.95 M



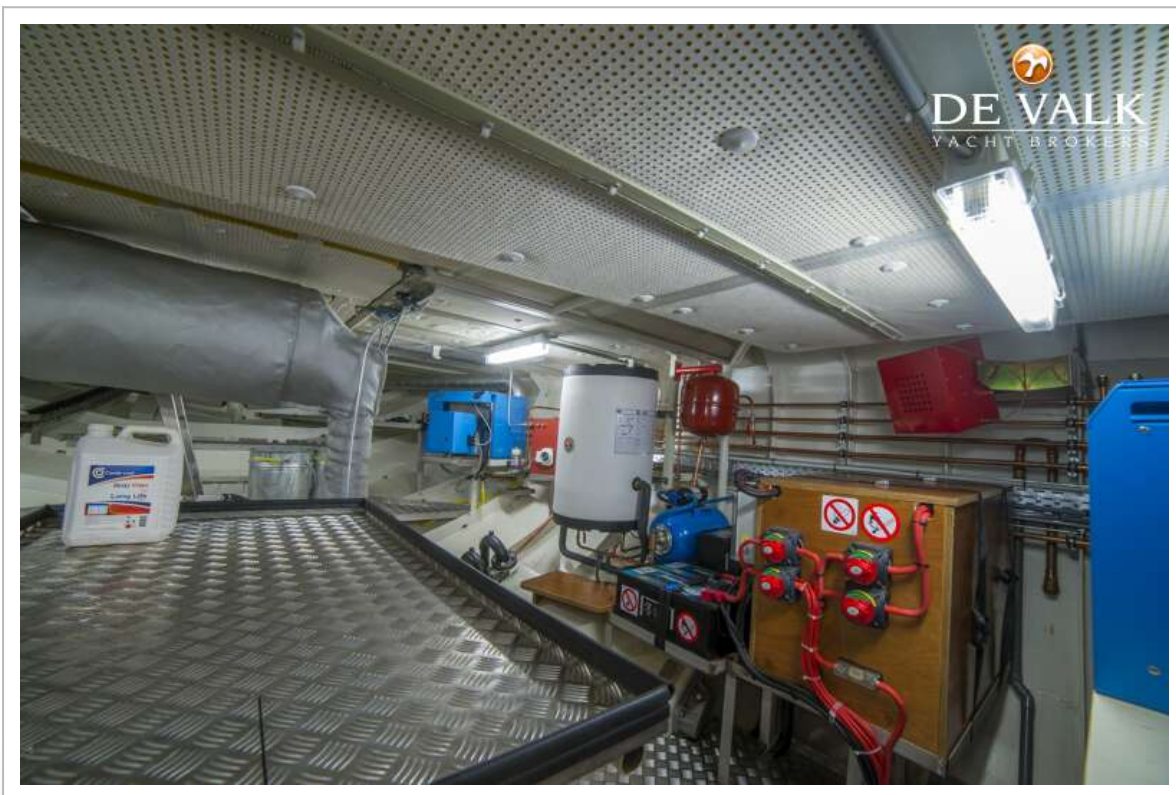




# LUXE MOTOR 24.95 M

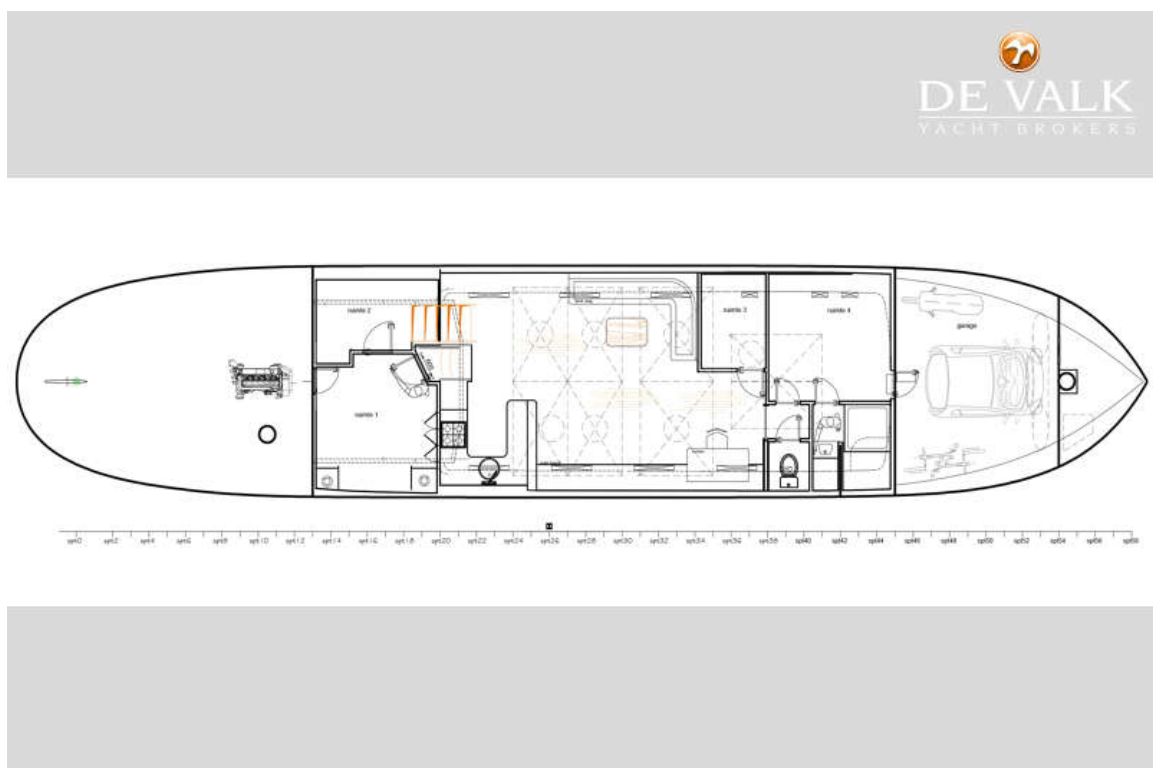


# LUXE MOTOR 24.95 M





# LUXE MOTOR 24.95 M



# LUXE MOTOR 24.95 M

