



DE VALK
YACHT BROKERS

FAIRLINE TARGA 28



DE VALK
YACHT BROKERS

FAIRLINE TARGA 28

BROKER'S COMMENTS

The Fairline Targa 28 is an excellent choice if you are looking for a versatile weekend and vacation sports cruiser. Fairline is known for luxury, speed, comfort and of course that is also reflected in this Fairline Targa 28 called "Avanti". The "Avanti" is equipped with a recent cockpit cover, Vetus bow thruster, chartplotter and Eberspächer diesel hot air heating. This makes this Fairline Targa 28 also very comfortable in less good weather. Because of the two strong Volvo Penta diesel engines, the "Avanti" has very pleasant and sporty features.

Jochem Heijermans

SPECIFICATIONS

Dimensions	9.07 x 3.10 x 1.00 (m)	Builder	Fairline Boats LTD
Built	1995	Cabins	1
Material	GRP	Berths	4
Engine(s)	2 x Volvo Penta AD31P/DP diesel	Hp/Kw	2 x 150.00 (hp), 110.25 (kw)
Asking price	sold (VAT)	Lying	elsewhere / Not at sales office

CONTACT

Sales office	De Valk Belgium	Telephone	+32 586 80 218
Address	1401 PT Nieuwpoort BE	E-mail	belgium@devalk.nl

DISCLAIMER

These particulars are given in good faith as supplied but cannot be guaranteed.



FAIRLINE TARGA 28

GENERAL

Model	FAIRLINE TARGA 28
Type	motor yacht
LOA (m)	9,07
Beam (m)	3,10
Draft (m)	1,00
Year built	1995
Builder	Fairline Boats LTD
Country	United Kingdom
Displacement (t)	4
CE norm	NA
Hull material	GRP
Hull colour	white
Hull shape	deep-V
Superstructure material	GRP
Rubbing strake	rubber
Deck material	GRP
Deck finish	non-skid moulded in
Superstructure deck finish	non-skid moulded in
Cockpit deck finish	non-skid moulded in
Antifouling (year)	2019
Window frame	aluminium
Window material	tempered glass
Deckhatch	yes
Portholes	aluminium
Insulation	foam
Fuel tank (litre)	GRP 418
Level indicator (fuel tank)	yes
Freshwater tank (litre)	GRP 186
Level indicator (freshwater)	yes
Wheel steering	hydraulic



Extra info

5x LED underwater lights (2017)

ACCOMMODATION

Cabins	1
Berths	4
Interior	teak
Floor	carpet
Open cockpit	yes
Saloon	yes
Headroom saloon (m)	1.90
Heating	Eberspacher D3
Convertible berth	yes
Galley	yes
Countertop	plastic
Sink	stainless steel
Cooker	calor gas 2 burner
Microwave/oven combi	yes
Fridge	yes
Hot water system	220V + engine
Water pressure system	electrical
Owners cabin	double bed
Bed length (m)	2,00 x 1.40
Wardrobe	hanging/drawers/shelves
Bathroom	shared
Toilet	shared
Toilet system	manual
Wash basin	in the bathroom
Shower	shared

MACHINERY

No of engines	2
---------------	---



FAIRLINE TARGA 28

Make	Volvo Penta
Type	AD31P/DP
HP	150
kW	110,25
Fuel	diesel
Year installed	1995
Maximum speed (kn)	28
Cruising speed (kn)	20
Drive	Z-drive
Engine controls	bowden cable
Gearbox	mechanical
Bowthruster	electric Vetus Max Power (2017)
Propeller type	fixed Duo-prop
Propeller shaft material	stainless steel
Electric bilge pump	yes
Electrical installation	12V/220V
Batteries	2x AGM 12V/130Ah
Battery monitor	yes
Battery charger	Mastervolt
Shorepower	with cable
Trimtabs	yes

NAVIGATION

Compass	yes
Electric compass	Raymarine Dragongly-7 (2017)
Depth sounder	Autohelm Tridata
Depth sounder/log	Raymarine Dragongly-7 (2017)
Forw. looking depth sounder	Raymarine Dragongly-7 (2017)
Log	yes
Fish finder	Raymarine Dragongly-7 (2017)
VHF	Garmin Mn-ghs 10i (2017)



Autopilot	Autohelm Sportpilot +
Rudder angle indicator	yes
Plotter/GPS	Raymarine Dragongly-7
Navigation lights	yes
Searchlight	yes

EQUIPMENT

Fixed windscreen	yes
Cockpit cover	(2018)
Bimini	yes
Cockpit cushions	yes
Cockpit table	yes
Bathing platform	yes
Boarding ladder	stainless steel
Transom door	yes
Deck shower	(w+c)
Anchor	
Anchor chain	30m
Windlass	electrical
Capstan	yes
Sea railing	stainless steel
Grab rail (superstructure)	stainless steel
Pushpit	yes
Pulpit	yes
Lifejackets	yes
Horn	electric
Fenders	yes
Mooring lines	yes
Spare parts	yes
Radio-cd player	yes
Cockpit speakers	yes



Speakers in salon

yes

Fire extinguisher

(2016)



FAIRLINE TARGA 28



FAIRLINE TARGA 28



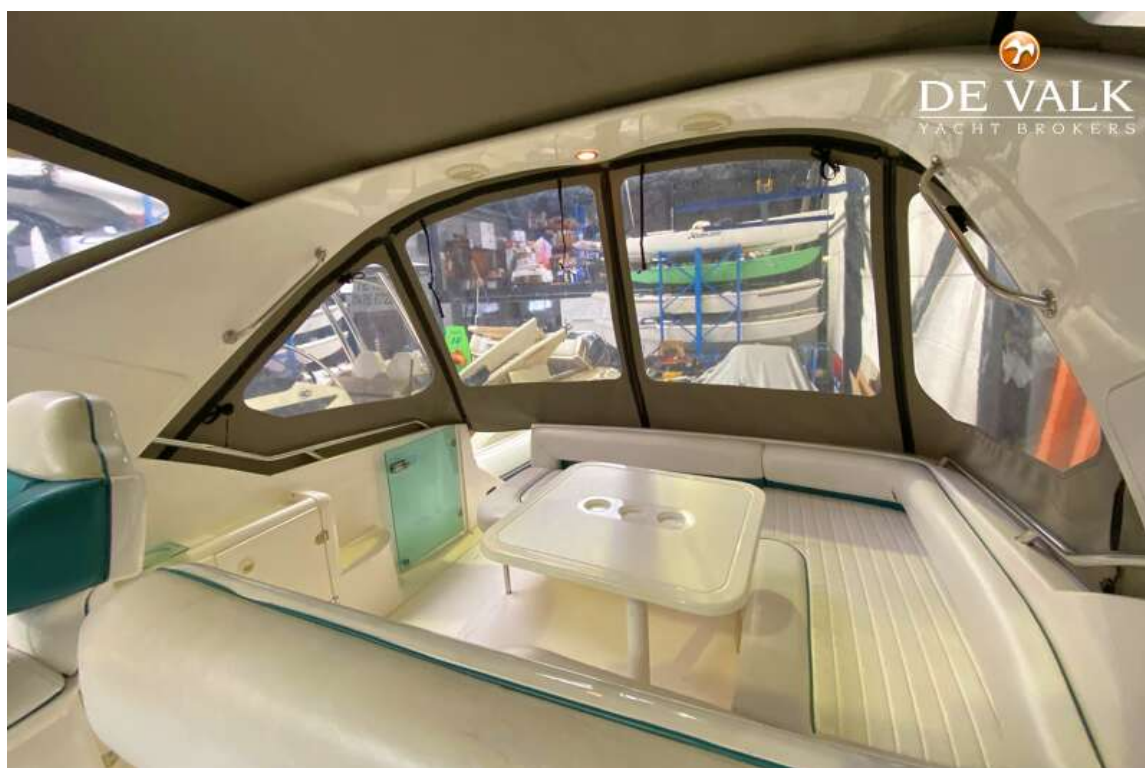
FAIRLINE TARGA 28



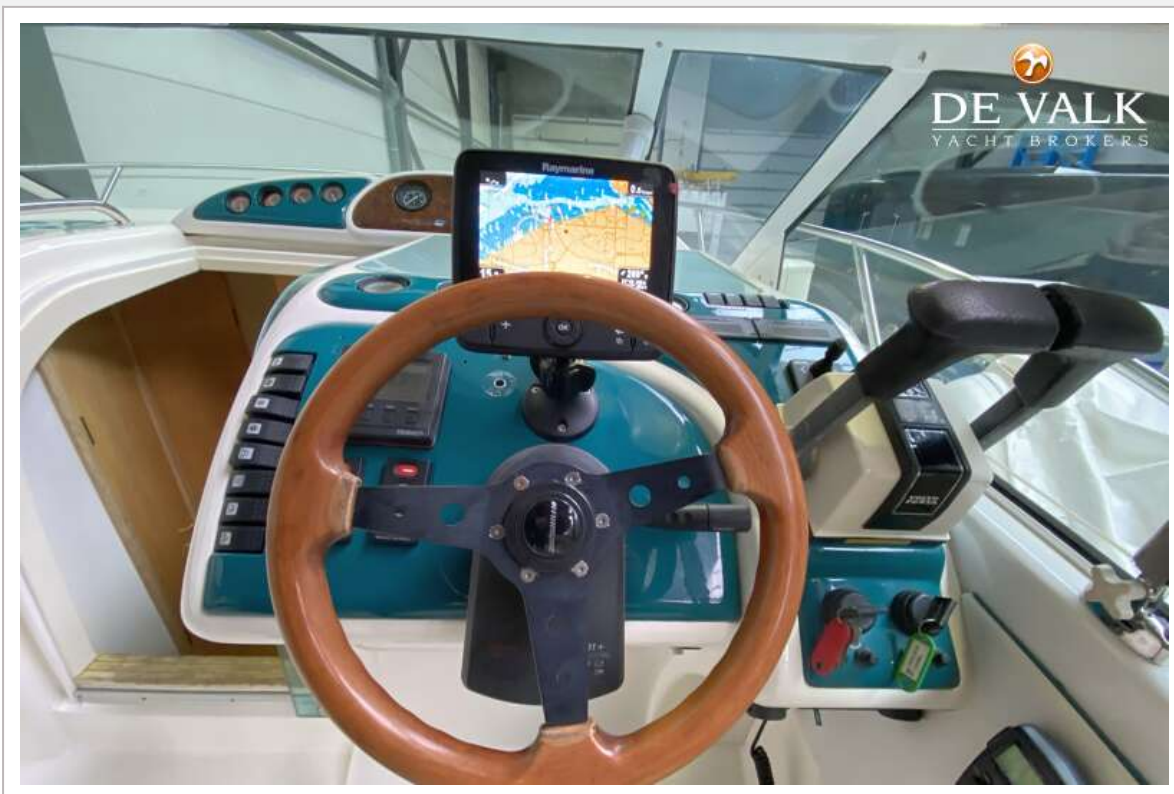
FAIRLINE TARGA 28



FAIRLINE TARGA 28



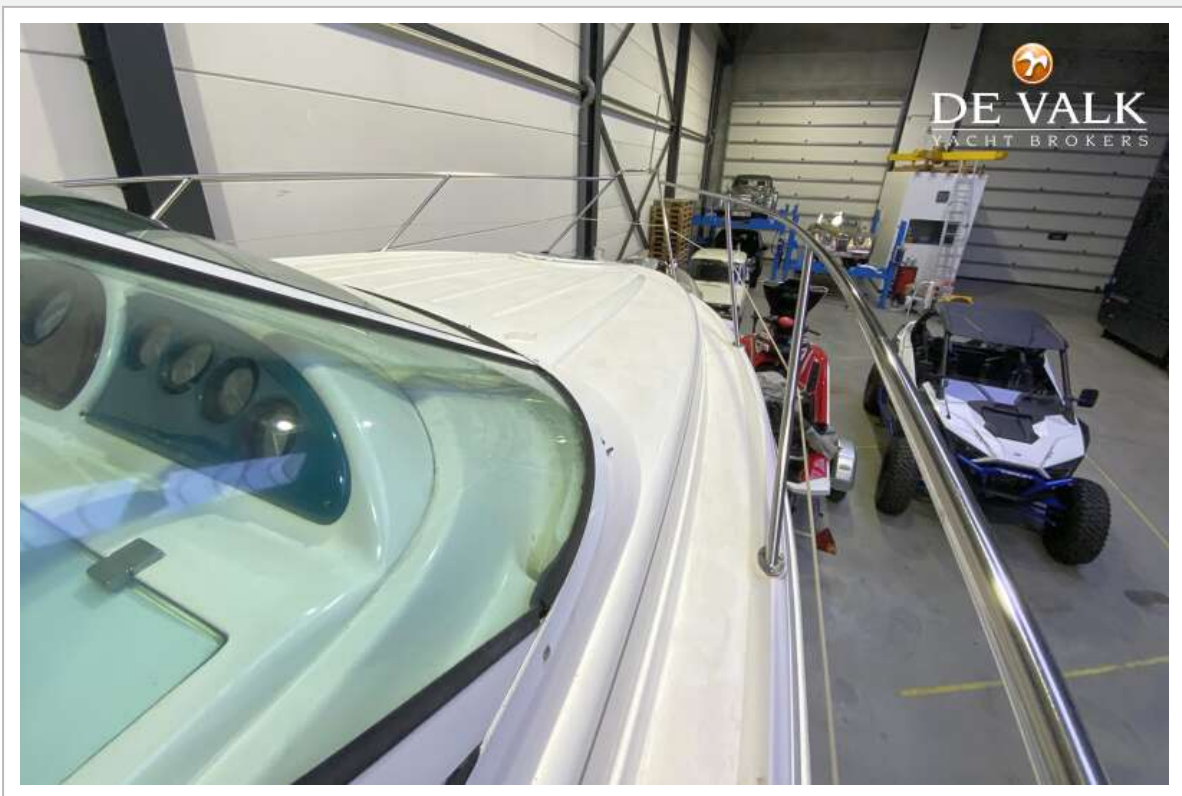
FAIRLINE TARGA 28



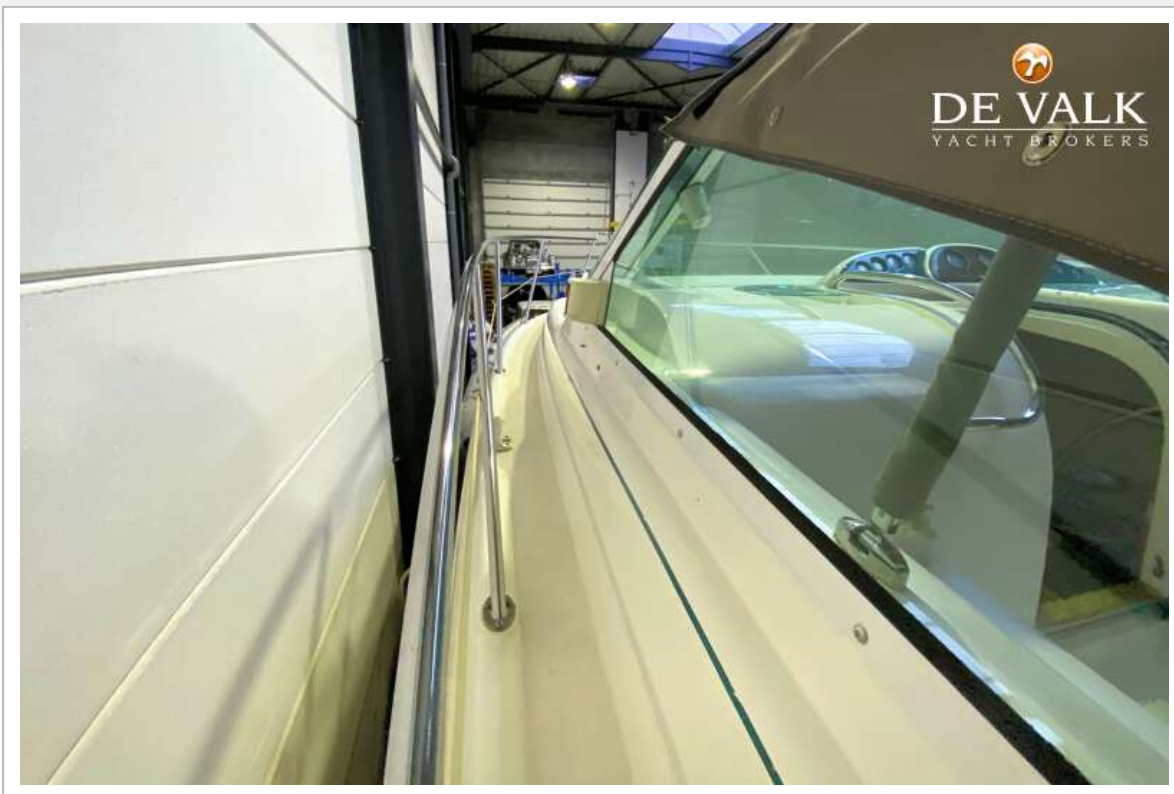
FAIRLINE TARGA 28



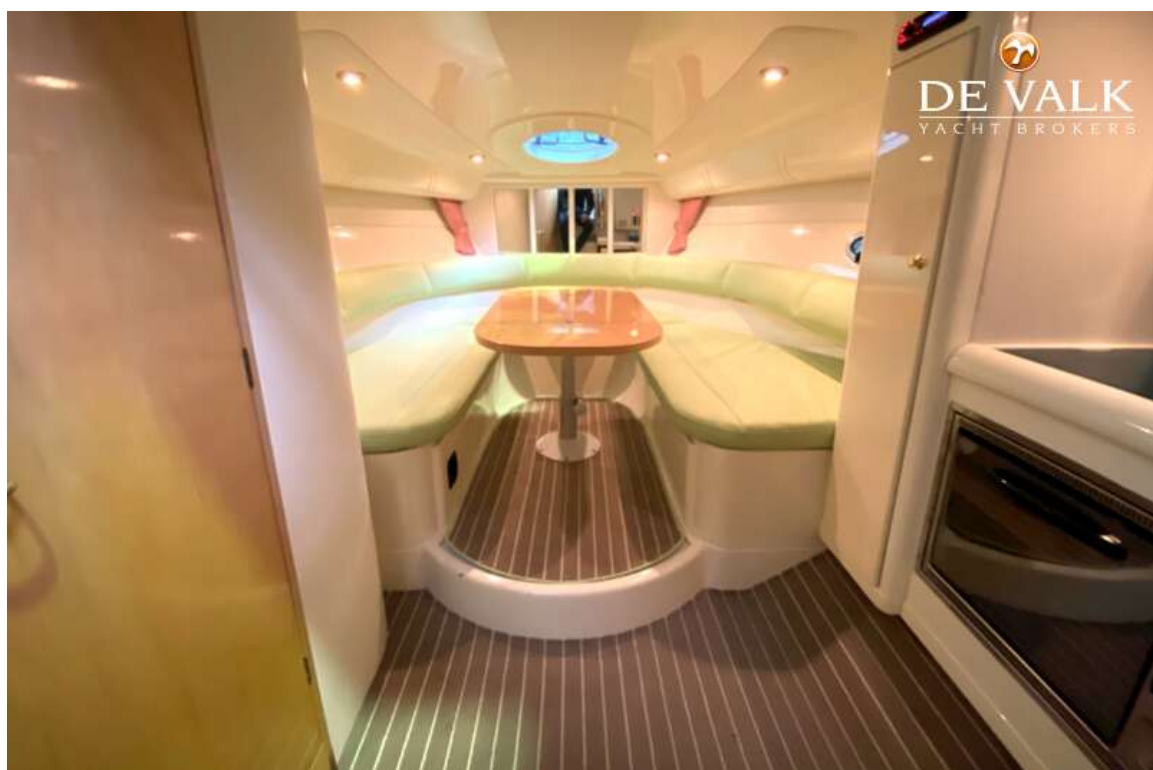
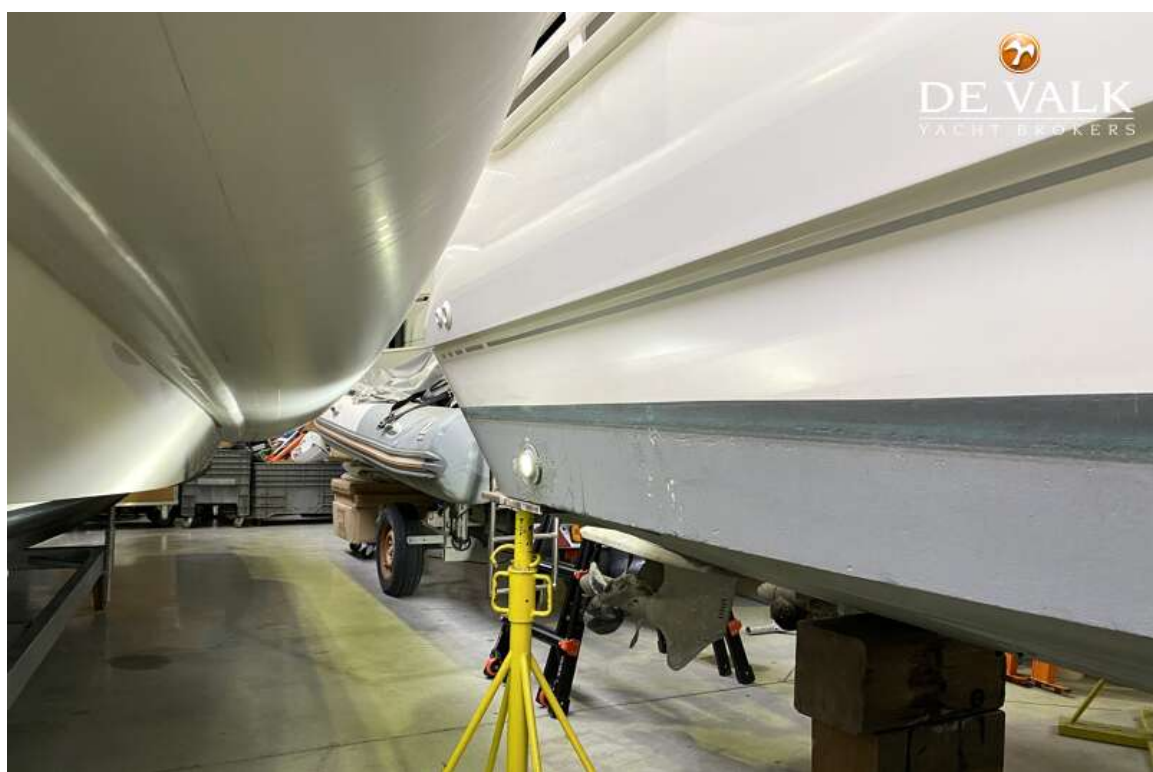
FAIRLINE TARGA 28



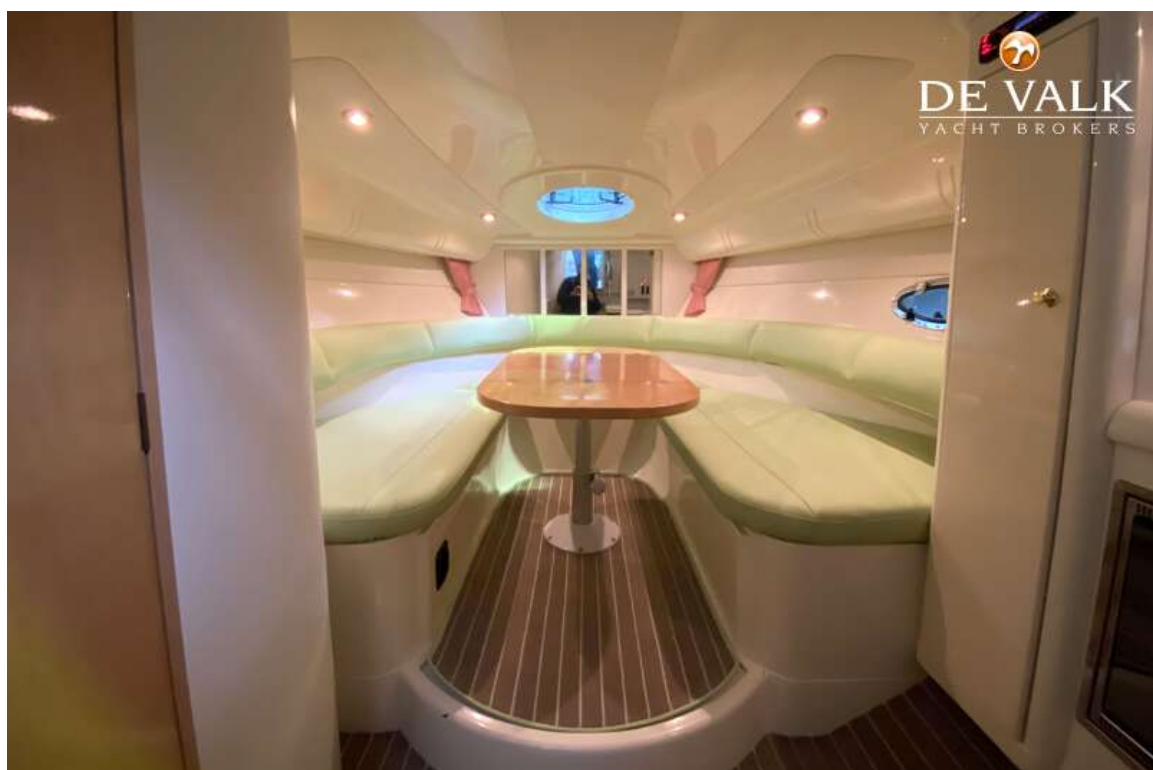
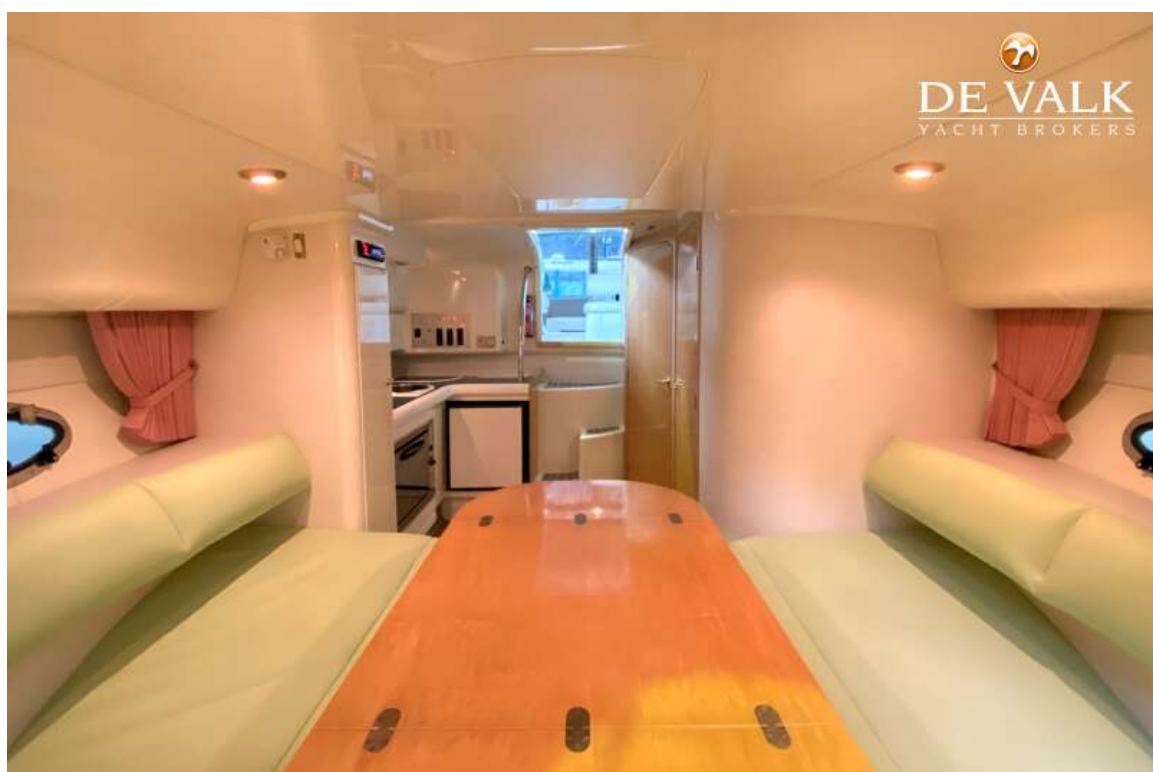
FAIRLINE TARGA 28



FAIRLINE TARGA 28



FAIRLINE TARGA 28



FAIRLINE TARGA 28



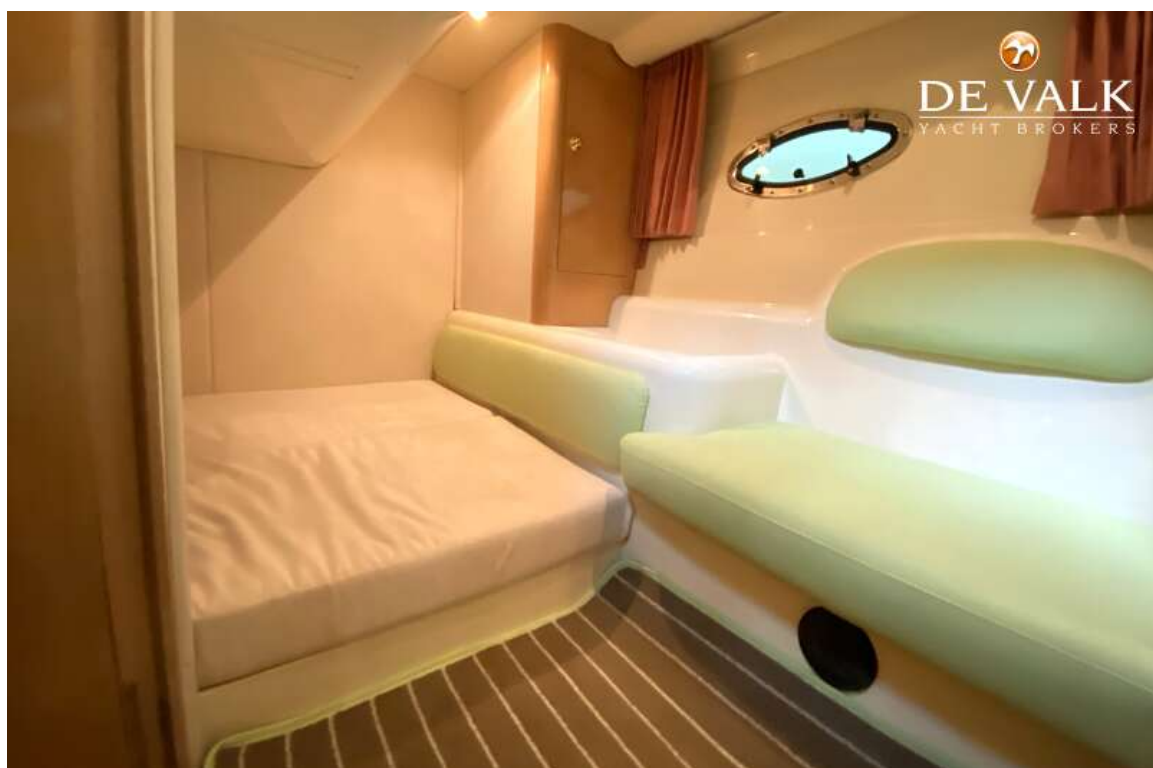
FAIRLINE TARGA 28



FAIRLINE TARGA 28



FAIRLINE TARGA 28



FAIRLINE TARGA 28

