



DE VALK
YACHT BROKERS



NAUTITECH 542



DE VALK
YACHT BROKERS

BROKER'S COMMENTS

On the Nautitech 542 Catamaran the sail plan and design of the hull are in perfect harmony, whatever course you are on, the wide cut of the code zero gives perfect adaptability in combination with the foresail, the widely extended mainsail keeps the ship moving even with a light wind. And with no wind two 75 Hp Yanmar's give a comfortable cruising speed. Everything is very open, spacious as in a luxury loft. Great interior, noble materials wherever you look. Elegance is a main detail on board the Nautitech 542. 2nd owner, not chartered and a motivated seller, so now priced to sell!

Marc Weijenberg

SPECIFICATIONS

Dimensions	16.46 x 8.55 x 1.57 (m)	Builder	Nautitech Catamarans
Built	2014	Cabins	3
Material	GRP	Berths	6
Engine(s)	2 x Yanmar 4JH4- TE diesel	Hp/Kw	2 x 75.00 (hp), 55.13 (kw)
Asking price	€ 625.000 (VAT Paid)	Lying	Greece

CONTACT

Sales office	De Valk Thuishaven	Telephone	+31 35 5829042
Address	Marinaweg 8 (postal address) 1361 AC Almere NL	E-mail	thuishaven@devalk.nl

DISCLAIMER

These particulars are given in good faith as supplied but cannot be guaranteed.



GENERAL

Model	NAUTITECH 542
Type	catamaran sailing yacht
LOA (m)	16,46
LWL (m)	16,24
Beam (m)	8,55
Draft (m)	1,57
Air draft (m)	21,80
Headroom (m)	1,95
Year built	2014
Launched	2015
Builder	Nautitech Catamarans
Country	France
Designer	Marc Lombard / Franck Darnet
Displacement (t)	16
CE norm	A
Hull material	GRP
Hull colour	white
Keel type	fin keel
Superstructure material	GRP
Deck material	GRP
Deck finish	non-skid moulded in
Superstructure deck finish	non-skid moulded in
Cockpit deck finish	teak
Antifouling (year)	reactivated (2019) Coppercoat
Window material	polycarbonate
Deckhatch	flush deck hatches 11x
Portholes	aluminium
Fuel tank (litre)	800 (2x 400)
Level indicator (fuel tank)	yes
Freshwater tank (litre)	500 (2x 250) + harbor water connection



Level indicator (freshwater)	yes
Blackwater tank (litre)	2x 98 Ltr
Level indicator (blackwater)	LED indication
Blackwater tank extraction	deck extraction + pump
Wheel steering	cable steering 2x Carbon
Emergency tiller	yes
Extra info	The owner says: "This Nautitech is a perfect performing family & friend entertainment voyager. I chose for this yacht for its great 360 visibility, easy handling, easy maintenance and great storage places for all the toys I needed. Often she was sailed single handed. I changed many small things to make life aboard safe, easy and relaxed. Sailing Waka Waka made me happy and she will make you happy to as her new owner. She never let me down and onboard I could not help myself, smiling all day long."

ACCOMMODATION

Cabins	3
Berths	6
Crew cabin	possible
Crew berths	2
Interior	American maple
Floor	wood
Open cockpit	yes
Headroom saloon (m)	1,97
Heating	Reverse cycle airco
Air-conditioning	reverse cycle airco
Navigation center	forward facing
Chart table	yes
Aft Cabin	2x
Dinette	dining table with adjustable foots for variable lounge area with new cushions (2019)
Sliding door to cockpit	yes
Galley	yes



Countertop	corian
Sink	stainless steel 2x
Cooker	calor gas 3-burner
Oven	yes
Microwave	yes
Fridge	1x in galley with two drawers 1x in starboard hull 2x
Freezer	in starboard hull 1x
Hot water system	220V + engine 2x 60ltr
Water pressure system	yes
Ice maker	Isotherm
Owners cabin	French bed
Bed length (m)	high density foam mattress with slats 2,00 x 1,55
Wardrobe	hanging and shelves
Bathroom	en suite
Toilet	en suite
Toilet system	electric Fresh water
Wash basin	in the bathroom Double sink
Shower	separate With teak grate
Extra info	Bed with upholstery headboard / cabin fan / shelves / drawers and settee aft
Guest cabin 1	French bed VIP Guest Cabin
Bed length (m)	high density foam mattress with slats 2,00 x 1,55
Wardrobe	hanging and shelves
Bathroom	en suite
Toilet	en suite
Toilet system	electric Fresh water
Wash basin	in the bathroom
Shower	separate
Extra info	the 2 front cabins are changed into lightweight double level storage rooms or beds
Guest cabin 2	yes
Bed length (m)	2,00 mtr



Wardrobe	hanging and shelves
Bathroom	en suite
Toilet	en suite
Toilet system	electric Fresh water
Wash basin	in the bathroom
Shower	separate
Crew cabin(s)	starboard bow area can be used as storage or crew berth
Extra info	in all cabins LED lights
Washing machine/dryer combi	6 Kg
Extra info	matress's new 2022

MACHINERY

No of engines	2
Make	Yanmar
Type	4JH4- TE
HP	75
kW	55.13
Fuel	diesel
Year installed	2014
Maximum speed (kn)	9,5
Cruising speed (kn)	7,5
Engine hours	1500
Engine cooling system	freshwater heat exchanger
Drive	sail-drive
Saildrive seal	yes
Engine controls	bowden cable
Gearbox	mechanical
Exhaust	watercooled
Propeller type	folding Flexofold
Propeller blades	3
Manual bilge pump	2x



Electric bilge pump	4x
Bilge alarm	yes
Electrical installation	12/24DC - 110/220AC
Generator	silent separator Onan 11 kW
Running hours generator	1155
Start battery	2 x 110 Ah
Service battery	8 x 165 Ah Gel Cel
Generator battery	1 x 110 Ah
Battery monitor	yes
Battery charger	2 x Mastervolt 100 amp
Inverter	1x Victron Phoenix 3000W/230V 1x Mastervolt 2000W/120V
Solar panel	4 x (2020) total 840WP plus 3 x Victron MPPT inverter
Shorepower	yes
Watermaker	Dessalator D200 50 gph
Extra info	2x 80 Ah alternators
Extra info	Electrical systems can be checked from your mobile phone
Extra info	extra noise reduction panels and hoses in both engine rooms,

NAVIGATION

Compass	2x
Electric compass	via autopilot
Depth sounder	Furuno
Log	Furuno
Windset	Furuno
Repeater	Furuno multi display
VHF	Garmin 300i + Iridium Sat Phone
VHF handheld	yes
Autopilot	Furuno Navpilot 711c (displays 2022)
Radar	Furuno Wifi radar (2019)
GPS	Furuno GP33
Plotter	Furuno



Personal computer	Navcore (2022) & 17" Neovo display
Wifi antenna	Bad Boy Extreme
Electronic chart(s)	(2022)
AIS transponder	Class B
EPIRB	yes
Personal MOB transmitter	Safelink AIS MOB System
Navigation lights	LED
Extra info	Port helmstation: Navnet TX9" chartplotter, Furuno RD 33 multi display, autopilot, music remote control, Quick chain counter, engine controls
Extra info	Stb helmstation: Furuno RD 33 multi display, Furuno FL 50 wind display, Furuno autopilot, Garmin VHF, engine controls

EQUIPMENT

Fixed hardtop	yes
Bimini	above both helm stations
Sun awning	Sunbrella
Cockpit cushions	yes
Cockpit table	yes
Bathing platform	2 x
Boarding ladder	stainless steel
Gangway	Carbon
Deck shower	yes
Anchor	Spade 45 kg
Anchor chain	80 mtr
Anchor 2	FOB 34 kg, folding 35 kg
Windlass	electrical Quick 1700W (2023) + remote controle
Deck wash	high pressure pump
Dinghy	rigid inflatable Highfield OM 420, alum bottom (2014)
Outboard	Honda BF 50hp with stainless steel towbar
Davits	stainless steel High load, manual
Sea railing	wire



Railing side opening gates	2 x
Pushpit	yes
Pulpit	with a front seat
Life raft	2 x (4 water)
Life raft (pers)	6
Fenders	yes
Mooring lines	yes
TV	Hayer 80 (incl. nav-display) on TV-lift in salon
Radio-cd player	Fusion cd/dvd/mp3 with remote control
iPod connection	yes
Cockpit speakers	plus outdoor Bose speakers in the front
Speakers in salon	yes
Fire extinguisher	6 x

RIGGING

Rigging	cat-rig
Standing rigging	wire
Brand mast	Marechal
Material mast	aluminium
Spreaders	2x
Mainsail cover	with Lazy Jacks (2021)
Battcars	upgraded Harken
Fully battened mainsail	with 2:1 halyard 99m ² , Incidence (2014) square top
Jib	selftacking 46 m ² , Incidence (2014)
Genoa furler	yes
Code Zero	yes
Gennaker	yes
Reefing System	slabreefing
Primary sheet winch	Harken Performa 1 x 70.2 & 1 x 70.2 electric
Secondary sheet winch	Harken Performa 2 x 60.2
Halyard winches	at the mast Harken Performa 1 x 50.2

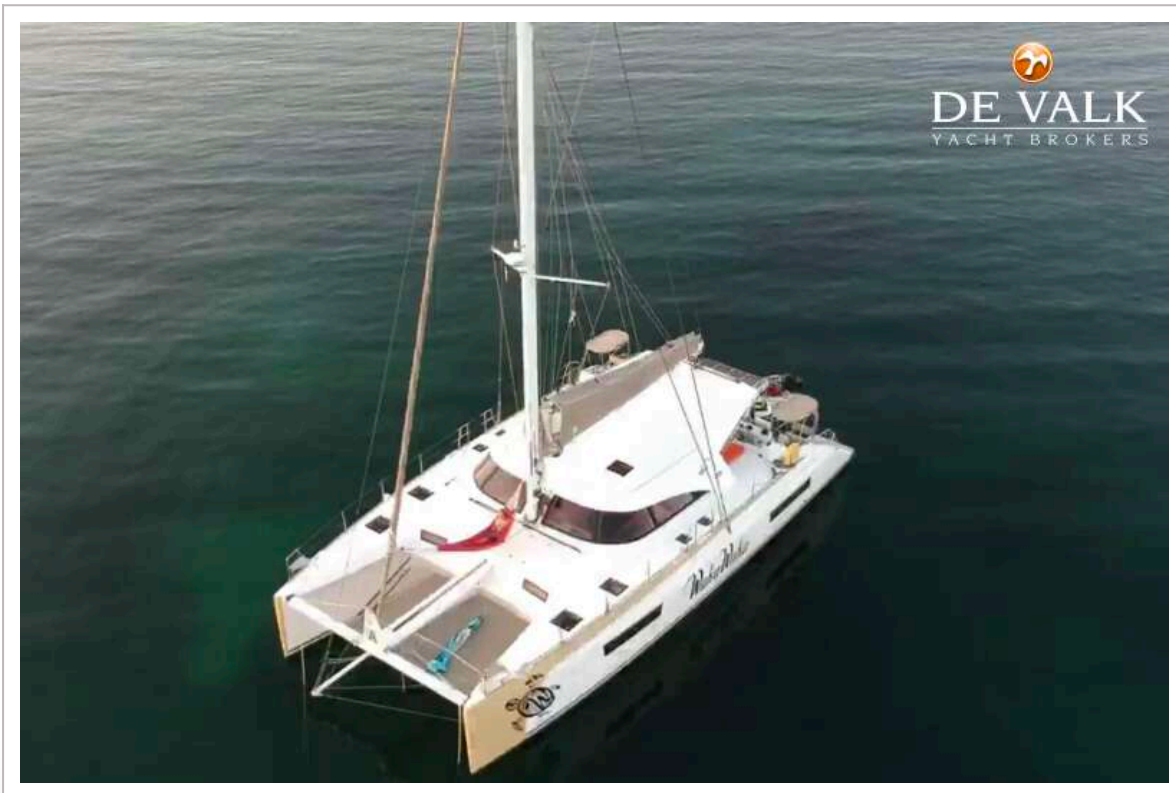


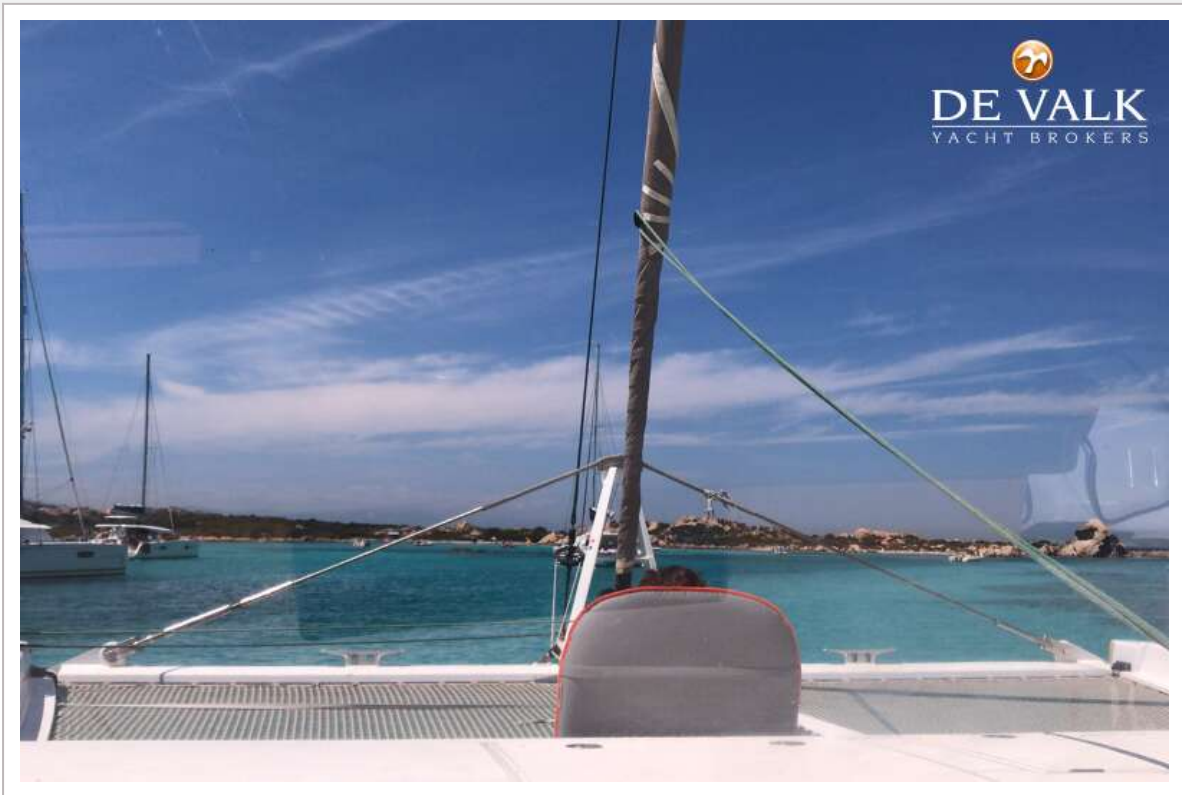
Gennaker pole

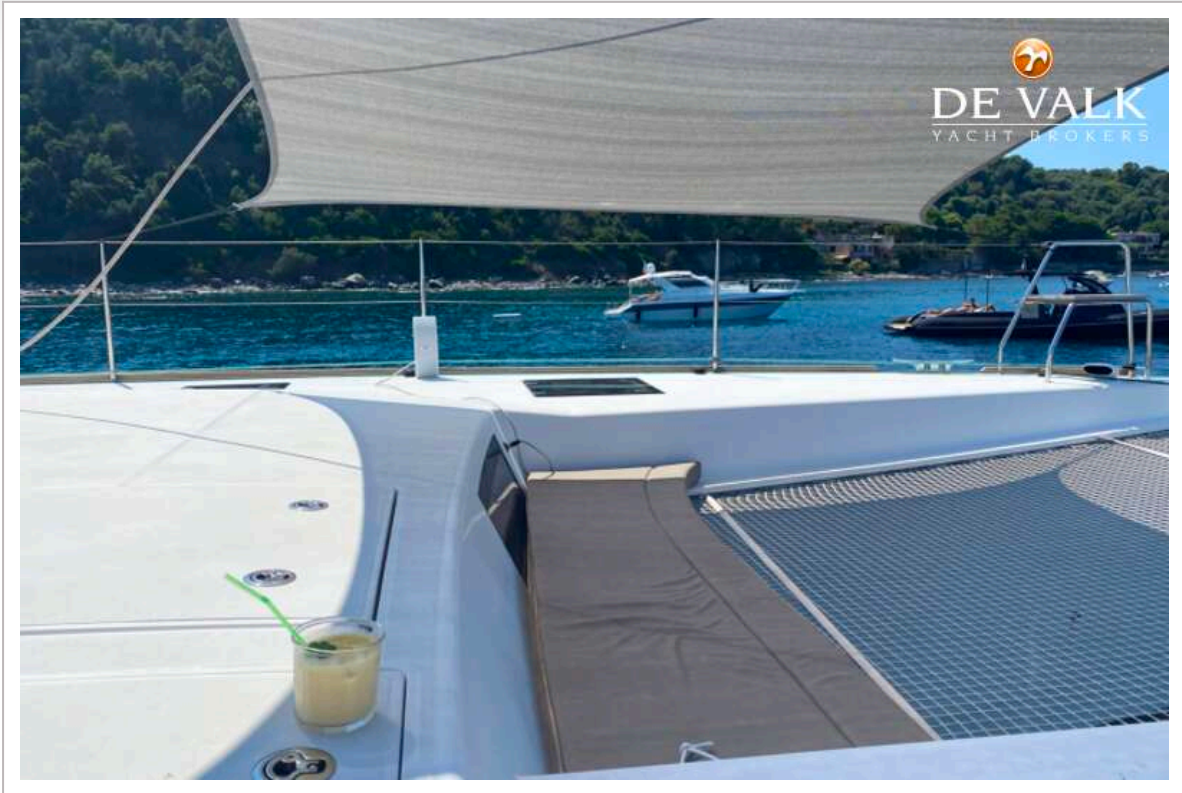
yes







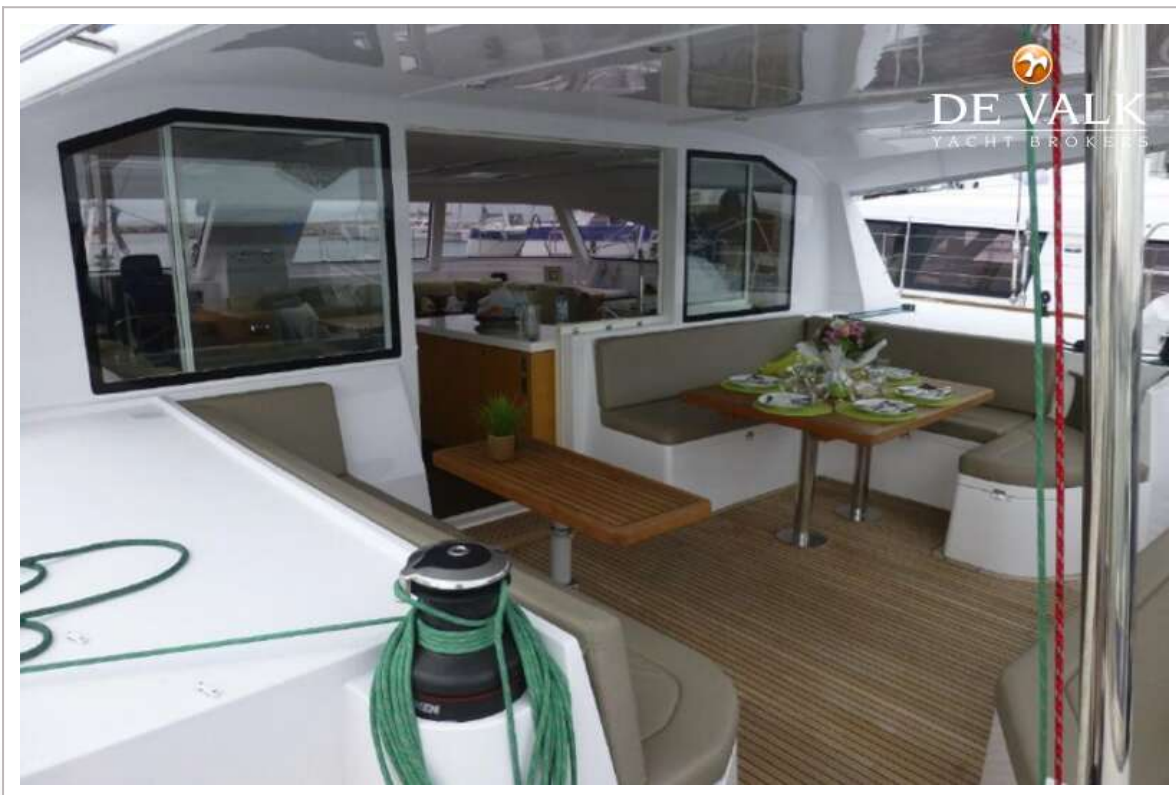






NAUTITECH 542





NAUTITECH 542



NAUTITECH 542

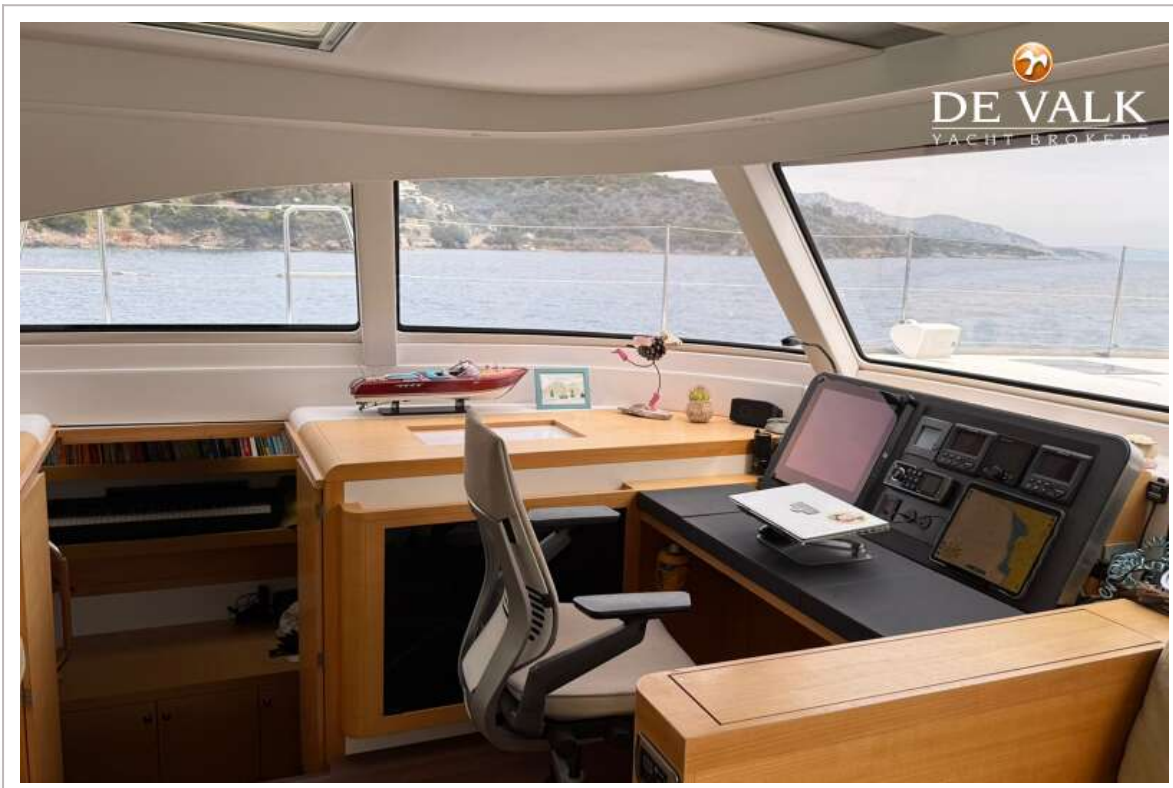




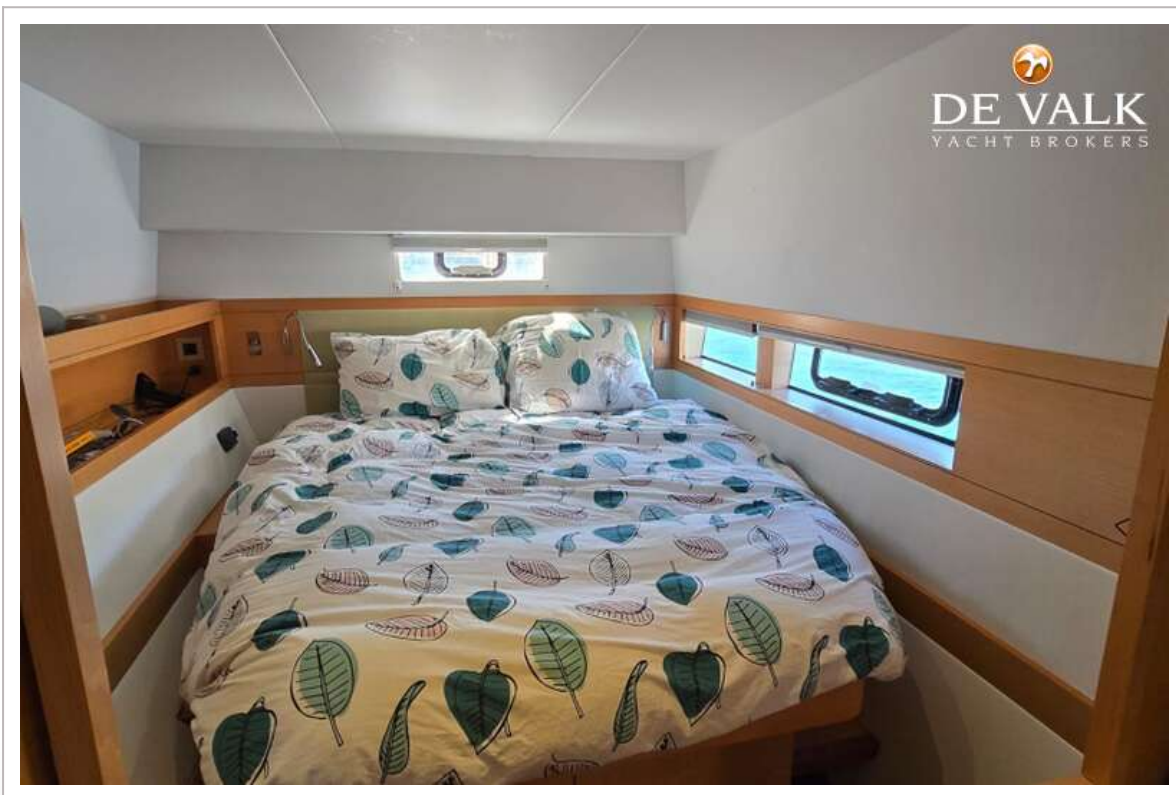
NAUTITECH 542



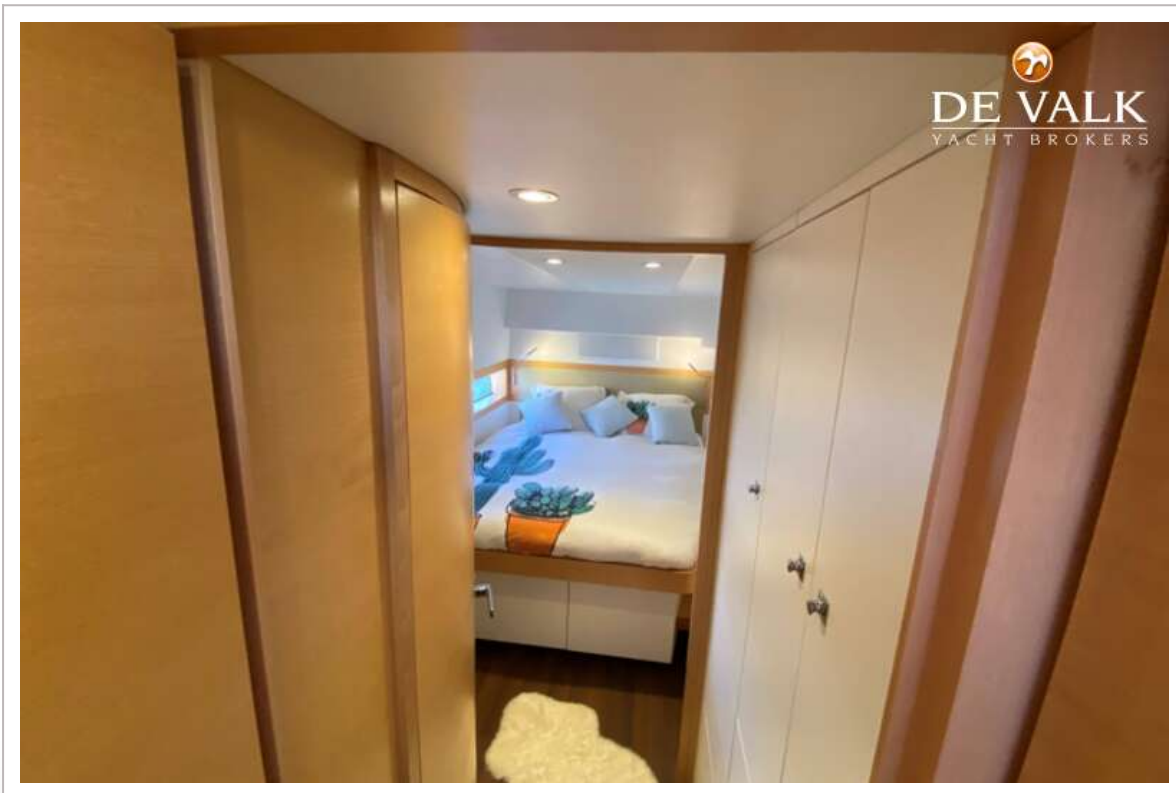
NAUTITECH 542



NAUTITECH 542







NAUTITECH 542

