



DE VALK
YACHT BROKERS

CONTEST 35S



DE VALK
YACHT BROKERS

BROKERAGE | CHARTER | BERTHS | FINANCE | INSURANCE | YACHT MANAGEMENT

CONTEST 35S

BROKER'S COMMENTS

The Contest 35S has a brilliant mix of performance, outstanding sea keeping, easy handling and a spacious accommodation. The saloon features a 198 cm settee to port and L-shaped settee to starboard, both of which will make good sea berths with the foldable lee boards + a front and aft-cabin which sleeps 4. There are numerous stowage compartments, a good galley and a huge chart table. Zilt is very well maintained, a good set of sails and a quite young, powerful Volvo Penta diesel engine, Ready for a visit in Katwoude, we are open 7 days a week.

Harald Padberg

SPECIFICATIONS

Dimensions	10.87 x 3.40 x 1.75 (m)	Builder	Conyplex Contest Medemblik
Built	1989	Cabins	2
Material	GRP	Berths	6
Engine(s)	1 x Volvo Penta D2-40F diesel	Hp/Kw	40.00 (hp), 29.40 (kw)
Asking price	sold (VAT)	Lying	at sales office

CONTACT

Sales office	De Valk Monnickendam B.V.	Telephone	+31 (0)299 65 63 50
Address	Hoogedijk 6 1145 PM Katwoude NL	E-mail	monnickendam@devalk.nl

DISCLAIMER

These particulars are given in good faith as supplied but cannot be guaranteed.



GENERAL

Model	CONTEST 35S
Type	sailing yacht
LOA (m)	10,87
LWL (m)	8,70
Beam (m)	3,40
Draft (m)	1,75
Air draft (m)	16,00
Year built	1989
Builder	Conyplex Contest Medemblik
Country	The Netherlands
Designer	Dick Zaal
Displacement (t)	5,92
Ballast (tonnes)	2,5 t
CE norm	NA
Hull material	GRP
Hull colour	white
Hull shape	round-bilged
Keel type	fin keel
Superstructure material	GRP
Rubbing strake	wood
Deck material	GRP
Deck finish	teak
Superstructure deck finish	yes
Cockpit deck finish	teak
Antifouling (year)	Mircon 77 International (April 2019)
Window frame	aluminium
Window material	polycarbonate
Deckhatch	2 X
Fuel tank (litre)	stainless steel 150 L.
Level indicator (fuel tank)	yes



Freshwater tank (litre)	stainless steel 250 L.
Level indicator (freshwater)	yes
Wheel steering	yes
Emergency tiller	yes

ACCOMMODATION

Cabins	2
Berths	6
Floor	teak and holly
Headroom saloon (m)	1,95 M.
Heating	Webasto Airtop Evo-M
Navigation center	yes
Chart table	yes
Dinette	yes
Galley	yes
Countertop	plastic
Sink	stainless steel
Cooker	calor gas
Oven	yes
Fridge	Isotherm
Hot water system	220V + engine
Water pressure system	electrical
Owners cabin	double bed
Bed length (m)	2.00 m
Wardrobe	hanging and shelves
Bathroom	shared
Toilet	shared
Toilet system	manual
Wash basin	in the bathroom
Shower	separate
Guest cabin 1	v-bed



Bed length (m)	2.00 m
Wardrobe	hanging and shelves

MACHINERY

No of engines	1
Make	Volvo Penta
Type	D2-40F
HP	40
kW	29,40
Fuel	diesel
Year installed	2010
Maximum speed (kn)	7
Cruising speed (kn)	6
Consumption (l/hr)	3,5
Engine hours	802
Engine cooling system	freshwater heat exchanger
Drive	shaft
Engine controls	bowden cable
Gearbox	mechanical
Exhaust	watercooled
Propeller type	feathering
Propeller shaft material	stainless steel
Shaft lubrication	water
Manual bilge pump	yes
Electric bilge pump	yes
Electrical installation	220V/12V
Start battery	Optima Redtop 50Ah/815A
Service battery	Mastervolt
Battery monitor	Mastervolt
Battery charger	Mastervolt
Diode battery combiners	Surepower



Shorepower

with cable

NAVIGATION

Depth sounder

Raymarine ST60+

Log

Raymarine ST60+

Windset

Raymarine ST60+ & Raymarine ST60+ Close hauled display

Repeater

Raymarine ST60+ Graphic

VHF

Icom IC-M601

VHF handheld

Cobra Floating Submersible

Autopilot

Raymarine ST6002 + remote control

Radar

Raymarine

GPS

Furuno GPS/WAAS Navigator

Plotter/GPS

Raymarine C90W

Navtex

Furuno NX300

Electronic chart(s)

yes

AIS transceiver

Raymarine Ais-500

Navigation lights

LED Tri-Color + LED Anchor light

Extra info

Windset needs to be checked; true and apparent wind display the same.

EQUIPMENT

Fixed windscreen

yes

Sprayhood with grab rail

De Vries + sprayhood extension

Cockpit cover

De Vries

Winter cover

yes

Cockpit table

yes

Boarding ladder

stainless steel

Anchor

CQR Plough

Anchor chain

yes

Anchor 2

Windlass

manual



Outboard support	yes
Sea railing	wire
Grab rail (superstructure)	teak
Pushpit	yes
Pulpit	yes
Life raft	yes
Last life raft survey	needs survey
Lifebuoy	Secumar MOB
Fenders	6 X regular drop fender + 2 x ball fender
Mooring lines	4 X dockline + 2 spring line
Clock - barometer	& hydro, Wempe
Fire extinguisher	2 X (needs survey)

RIGGING

Rigging	sloop
Standing rigging	wire (2011)
Brand mast	Seldén
Material mast	aluminium
Spreaders	2 sets
Mainsail	North Sails - above average condition
Stoway mast	yes
Jib	(Working Jib) North Sails - above average condition
Genoa	North Sails - fair condition
Genoa furler	Harken
Gennaker	North Sails - like new
Spinnaker	North Sails - like new
Stormjib	North Sails - new
Reefing System	main in-mast furling
Backstay adjuster	tackle
Boomvang	mechanical and tackle
Primary sheet winch	2 X Lewmar 43



Genoa sheetwinches

Multifunctional winches

Spi-pole

2 X Lewmar 45

halyard/sheet winches 2 X Lewmar 30

aluminium

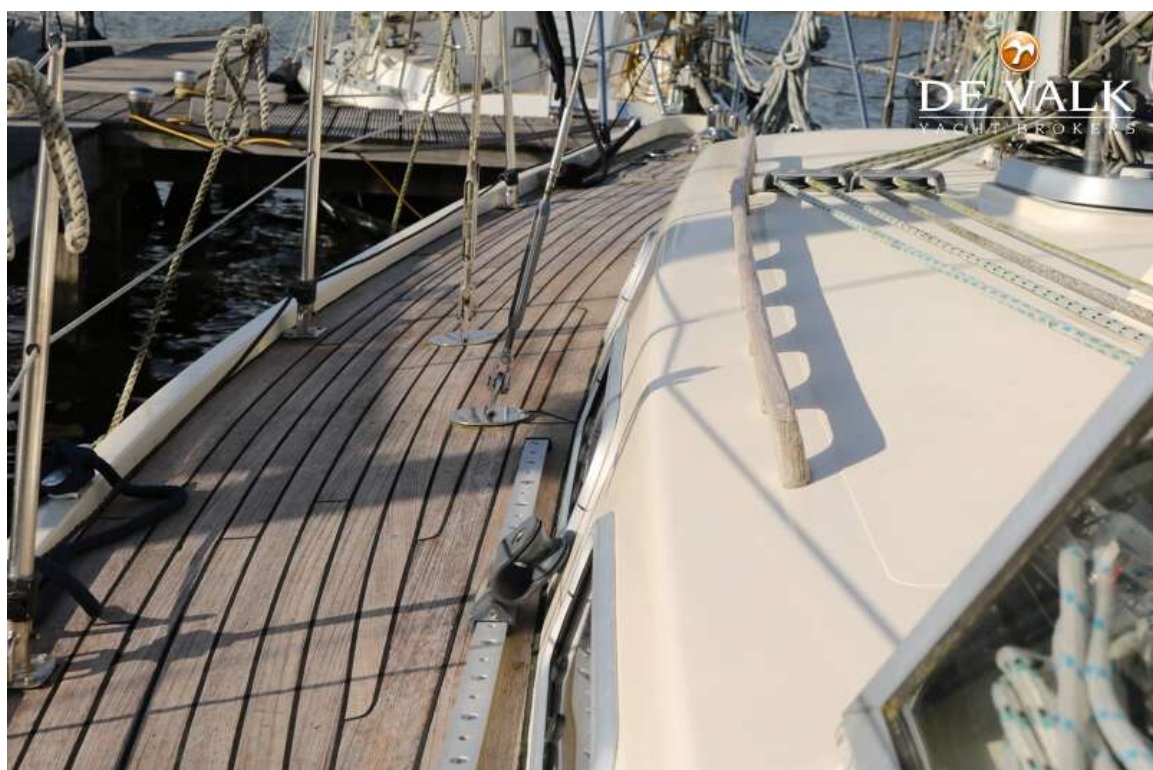




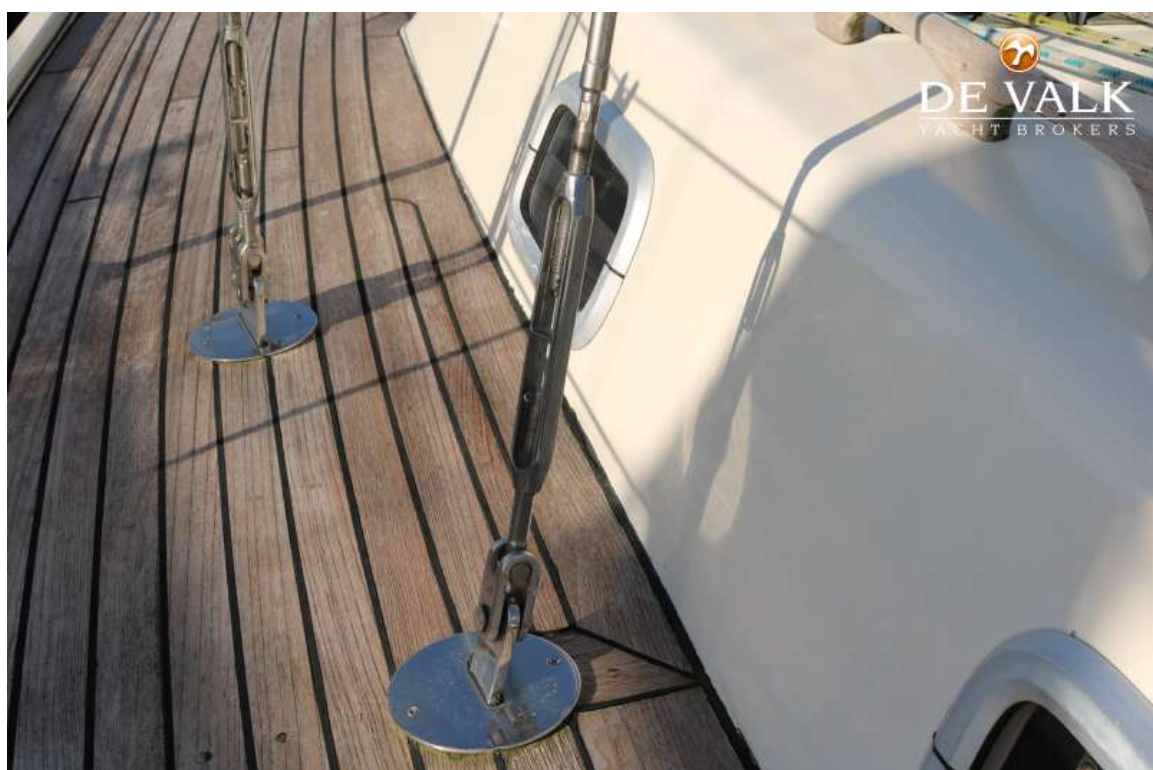




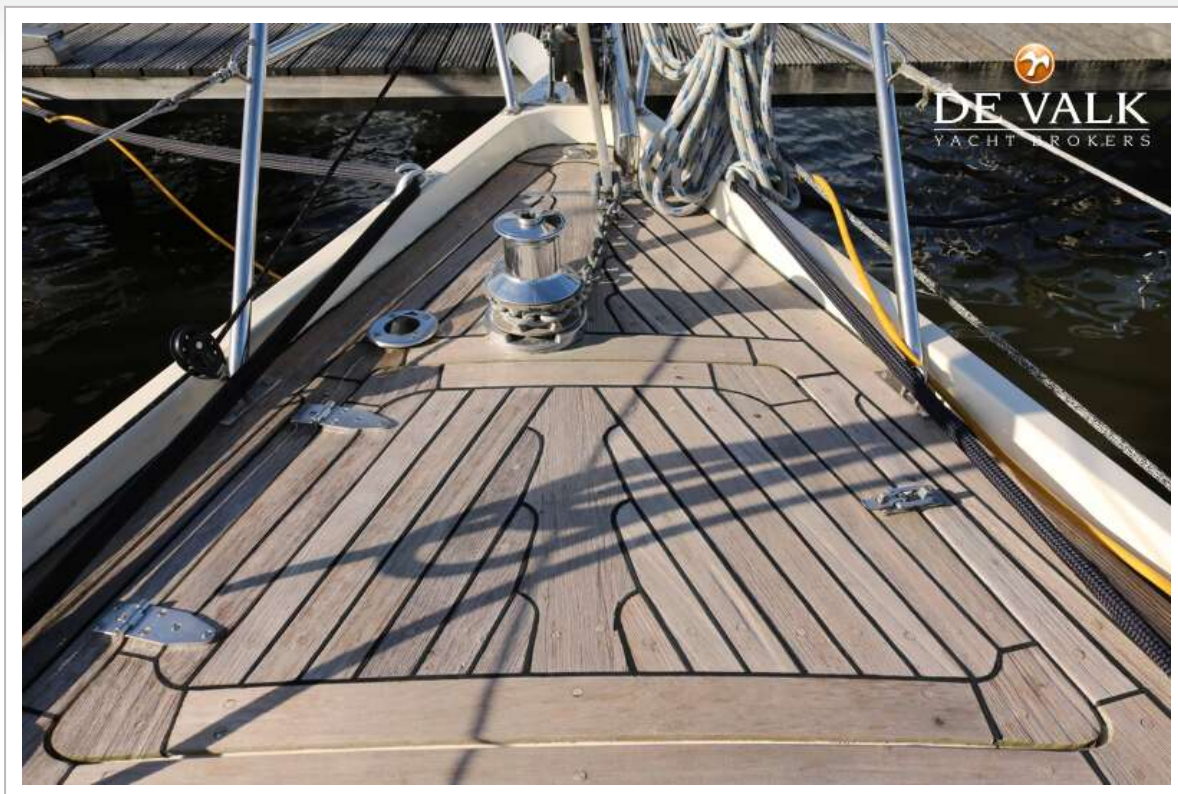




CONTEST 35S



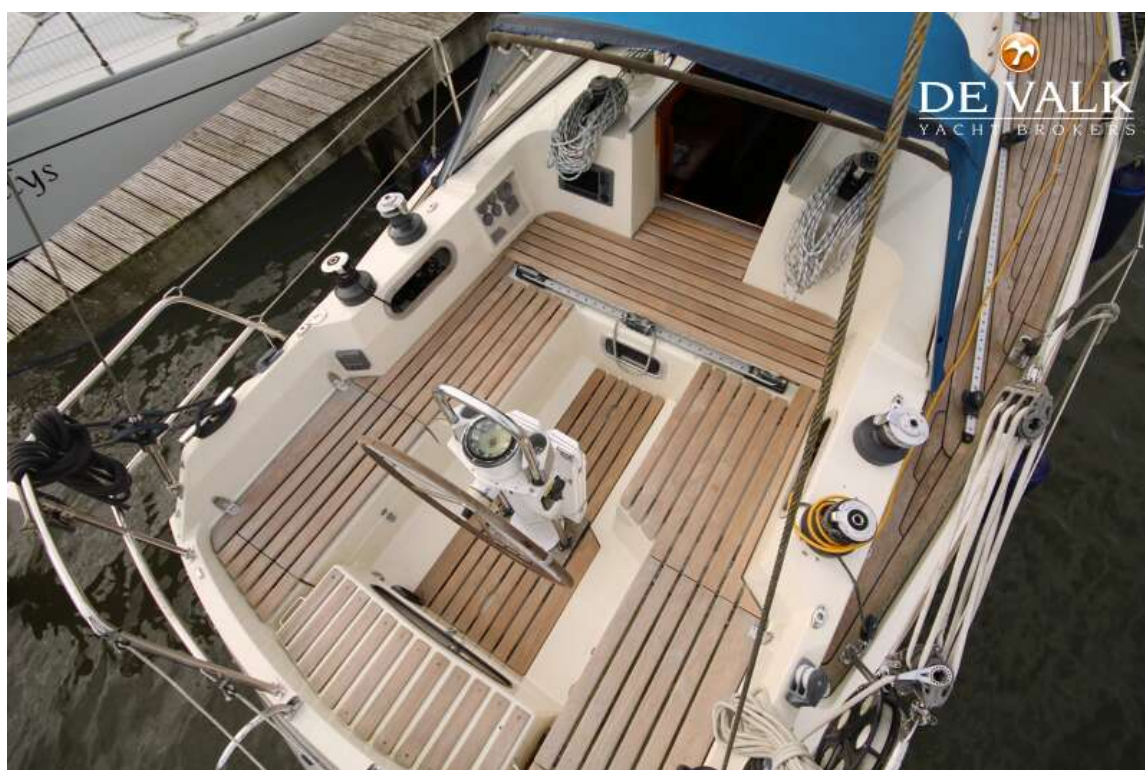
CONTEST 35S



CONTEST 35S



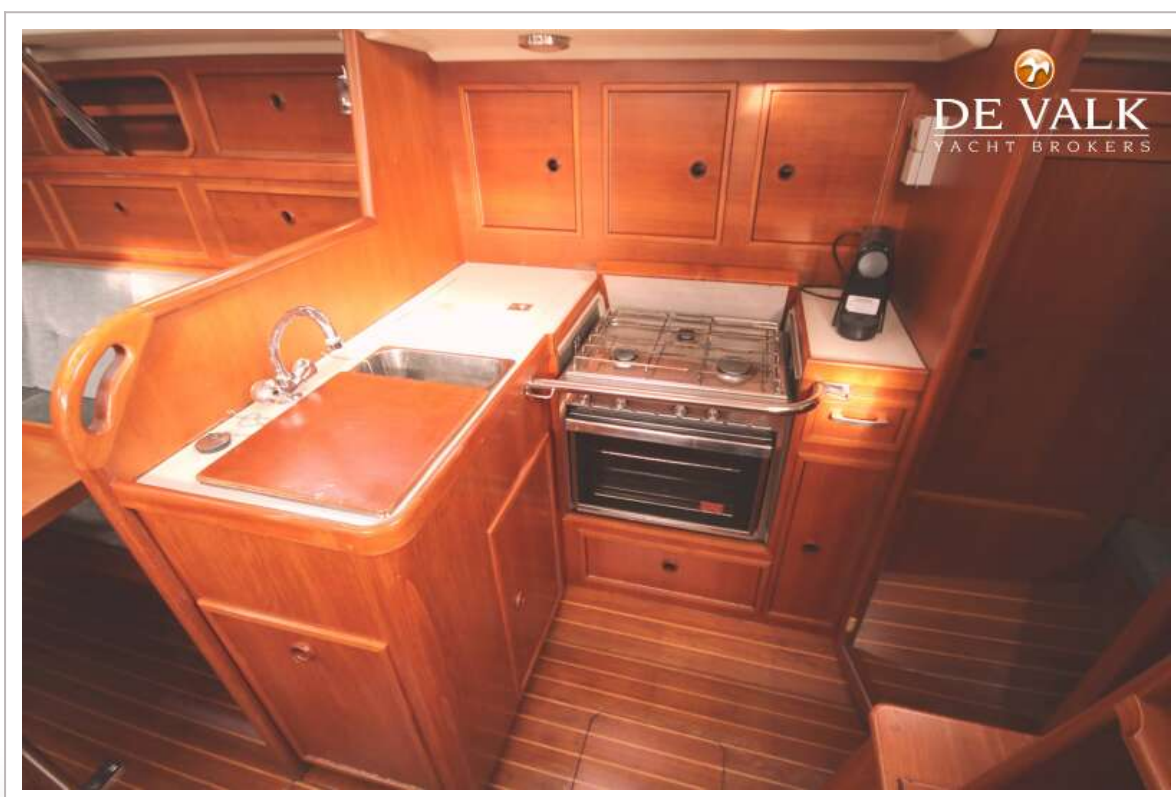
CONTEST 35S



CONTEST 35S



CONTEST 35S



CONTEST 35S



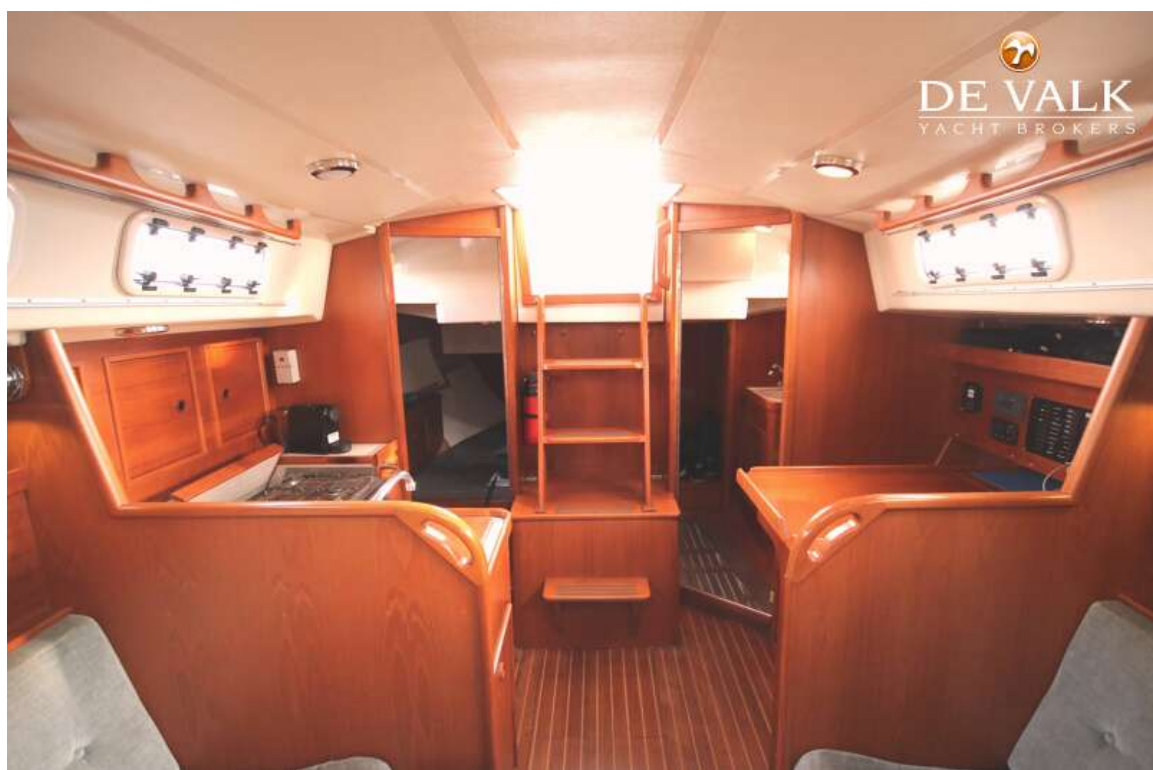
CONTEST 35S



CONTEST 35S



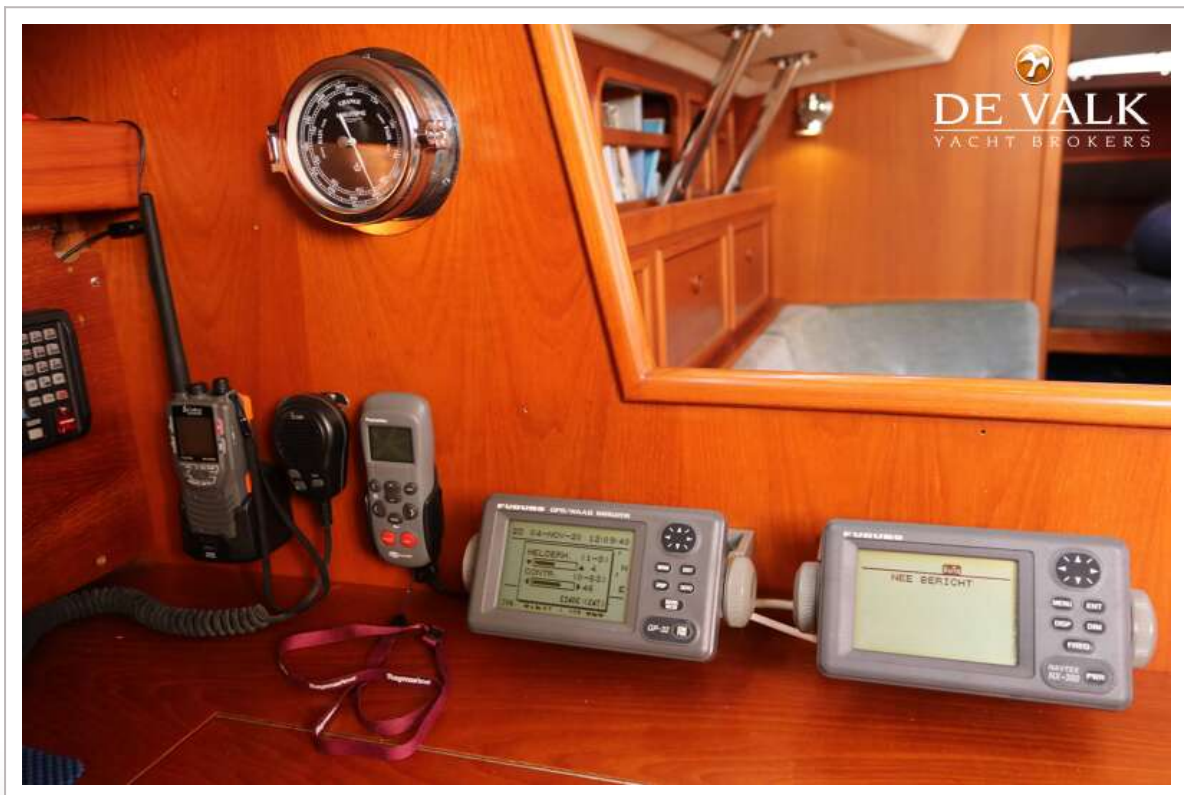
CONTEST 35S



CONTEST 35S



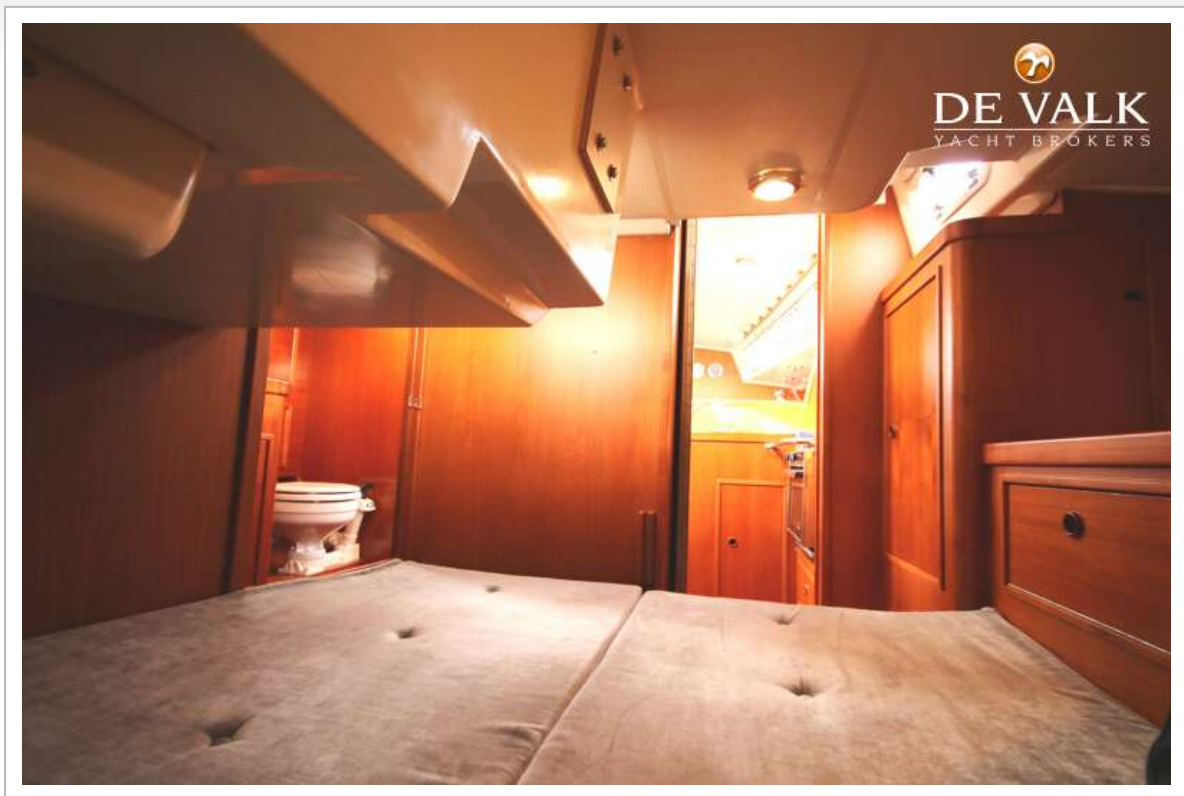
CONTEST 35S

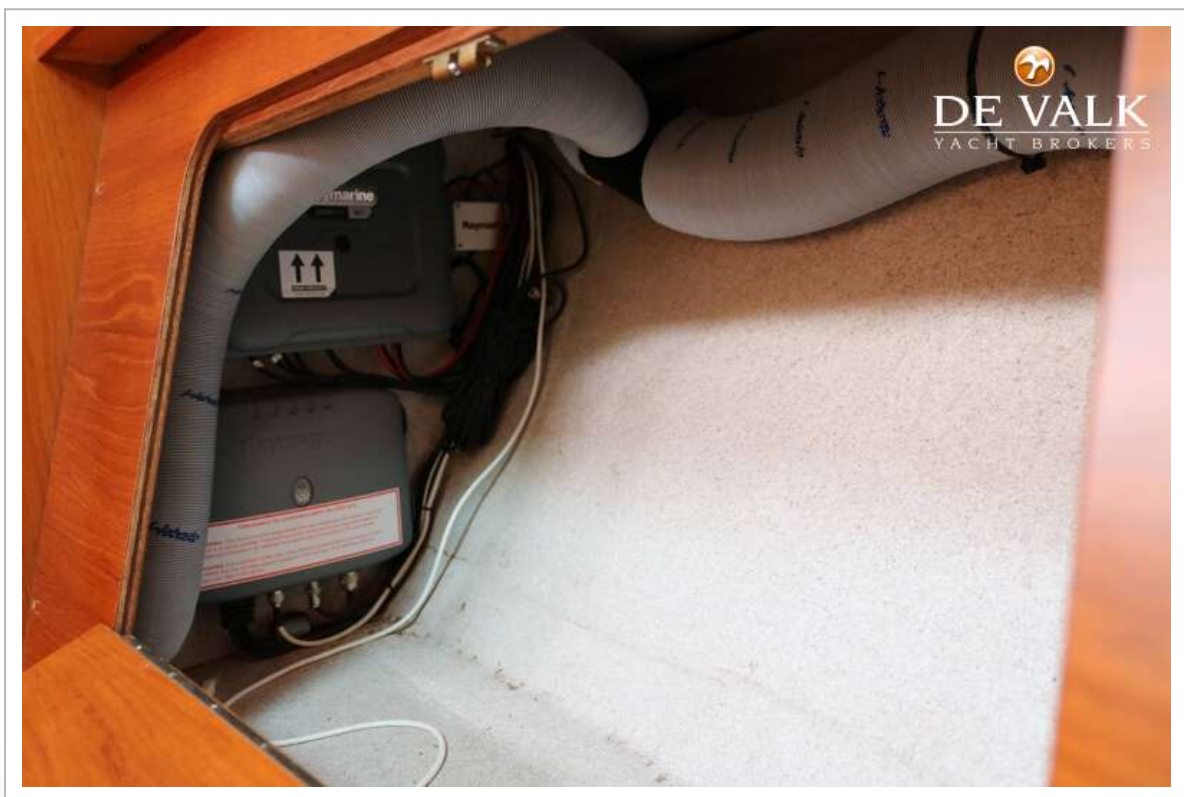


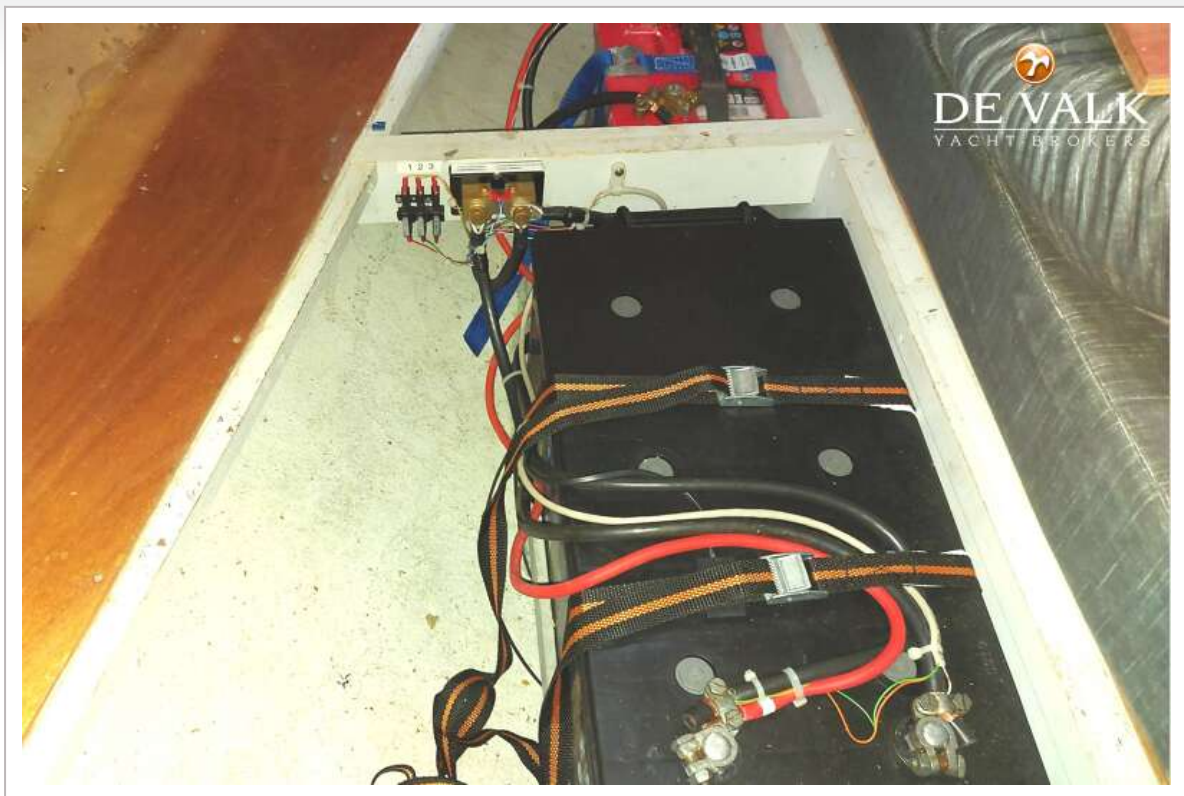
CONTEST 35S



CONTEST 35S







CONTEST 35S

