



## MALO 43 CLASSIC



DE VALK  
YACHT BROKERS

# MALO 43 CLASSIC

## BROKER'S COMMENTS

The Malo 43 Classic is well-known Scandinavian yacht. It is a thoughtful design and she is fully equipped, regarding sails and navigation equipment. The yacht is luxuriously furnished with great attention to comfort, safety and performance. There is plenty of storage space in easily accesible places and this Malo 43 Classic yacht is a overall good reliable sailer. She is ready for new adventures with her new owner!

*Henri van Eelen*

## SPECIFICATIONS

<b>Dimensions</b>	13.39 x 3.97 x 1.97 (m)	<b>Builder</b>	Malö Yachts AB, Kungsviken
<b>Built</b>	2005	<b>Cabins</b>	2
<b>Material</b>	GRP	<b>Berths</b>	6
<b>Engine(s)</b>	1 x Volvo Penta D2-75 diesel	<b>Hp/Kw</b>	75.00 (hp), 55.13 (kw)
<b>Asking price</b>	sold (VAT )	<b>Lying</b>	at sales office

## CONTACT

<b>Sales office</b>	De Valk Hindeloopen B.V.	<b>Telephone</b>	+31 514 52 40 00
<b>Address</b>	Oosterstrand 1 8713 JS Hindeloopen NL	<b>E-mail</b>	hindeloopen@devalk.nl

## DISCLAIMER

These particulars are given in good faith as supplied but cannot be guaranteed.



# MALO 43 CLASSIC

## GENERAL

Model	MALO 43 CLASSIC
Type	sailing yacht
LOA (m)	13,39
LWL (m)	10,90
Beam (m)	3,97
Draft (m)	1,97
Air draft (m)	19,30
Headroom (m)	2,10
Year built	2005
Builder	Malö Yachts AB, Kungsviken
Country	Sweden
Designer	Leif Ängemark
Displacement (t)	11,3
Ballast (tonnes)	lead 3,6
CE norm	A
Hull material	GRP
Hull colour	white
Hull shape	round-bilged
Keel type	fin keel
Superstructure material	GRP
Rubbing strake	stainless steel
Deck material	GRP
Deck finish	teak
Superstructure deck finish	teak
Cockpit deck finish	teak
Dorades	2x
Window frame	aluminium
Window material	polycarbonate
Deckhatch	2x
Fuel tank (litre)	stainless steel Approx. 375 ltr.



# MALO 43 CLASSIC

Level indicator (fuel tank)	yes
Freshwater tank (litre)	stainless steel 3 tanks total approx. 455 ltr.
Level indicator (freshwater)	One for each tank
Blackwater tank (litre)	polyethylene 2x 70 ltr.
Blackwater tank extraction	deck extraction + uw line
Wheel steering	rack & pinion Jefa steering system
Emergency tiller	yes

## ACCOMMODATION

Cabins	2
Berths	6
Interior	mahogany
Floor	teak and holly
Open cockpit	yes
Saloon	yes
Headroom saloon (m)	1.95 / 2.10 mtr.
Heating	diesel ducted hot air Eberspächer
Navigation center	yes
Chart table	yes
Aft Cabin	1x
Dinette to convert into berth	yes
Galley	yes
Countertop	corian
Sink	stainless steel Double sink
Cooker	Eno - 2 burner
Oven	In cooker
Fridge	with freezer compartment
Hot water system	220V + engine Waterheater 40 ltr.
Water pressure system	electrical
Owners cabin	double bed
Bed length (m)	2.02 mtr.



# MALO 43 CLASSIC

Wardrobe	hanging/drawers/shelves
Bathroom	en suite
Toilet	Raritan
Toilet system	manual
Wash basin	
Shower	
Guest cabin 1	double bed
Bed length (m)	2.08
Wardrobe	hanging and shelves
Bathroom	shared
Toilet	Raritan
Toilet system	manual
Wash basin	
Shower	

## MACHINERY

No of engines	1
Make	Volvo Penta
Type	D2-75
HP	75
kW	55,13
Fuel	diesel
Year installed	2005
Maximum speed (kn)	8
Cruising speed (kn)	7
Engine hours	920
Engine cooling system	freshwater heat exchanger
Drive	shaft
Engine controls	bowden cable
Gearbox	mechanical
Bowthruster	electric Side-Power



# MALO 43 CLASSIC

Exhaust	watercooled
Thrust bearing	yes
Propeller type	feathering
Propeller blades	3
Shaft lubrication	water
Manual bilge pump	yes
Electric bilge pump	yes
Electrical installation	12 / 220 V
Generator	Mastervolt
Start battery	yes
Service battery	yes
Battery monitor	Mastervolt Power system control panel
Shorepower	with cable

## NAVIGATION

Compass	Plastimo Olympic 135
Depth sounder	Raymarine ST60 DEPTH
Log	Raymarine ST60 SPEED
Windset	Raymarine ST60 WIND
Repeater	Raymarine ST60 GRAPHIC
VHF	Raymarine Ray240E
Autopilot	Raymarine ST6001 control
Radar	Raymarine
Radar/GPS/plotter	Raymarine E80 (outside) Raymarine E80 (inside)
Navtex	ICS NAV6
Camera	yes
Navigation lights	yes

## EQUIPMENT

Fixed windscreen	yes
Sprayhood	yes



Cockpit cover	yes
Bathing platform	yes
Boarding ladder	stainless steel
Bow ladder	yes
Deck shower	yes
Anchor	
Anchor chain	yes
Anchor 2	
Windlass	electrical Lofrans
Radio-cd player	Pioneer

## RIGGING

Rigging	sloop
Standing rigging	wire
Brand mast	Seldén
Material mast	aluminium
Spreaders	2 pair
Mainsail	yes
Stoway mast	yes
Genoa furler	Harken MKIII
Reefing System	main in-mast furling
Backstay adjuster	mechanical
Boomvang	gasspring
Primary sheet winch	2x Andersen 40ST two speed
Genoa sheetwinches	2x Andersen 58ST two speed Electric
Halyard winches	2x Andersen 28ST two speed on mast
Spi-pole	aluminium Attached on mast



# MALO 43 CLASSIC

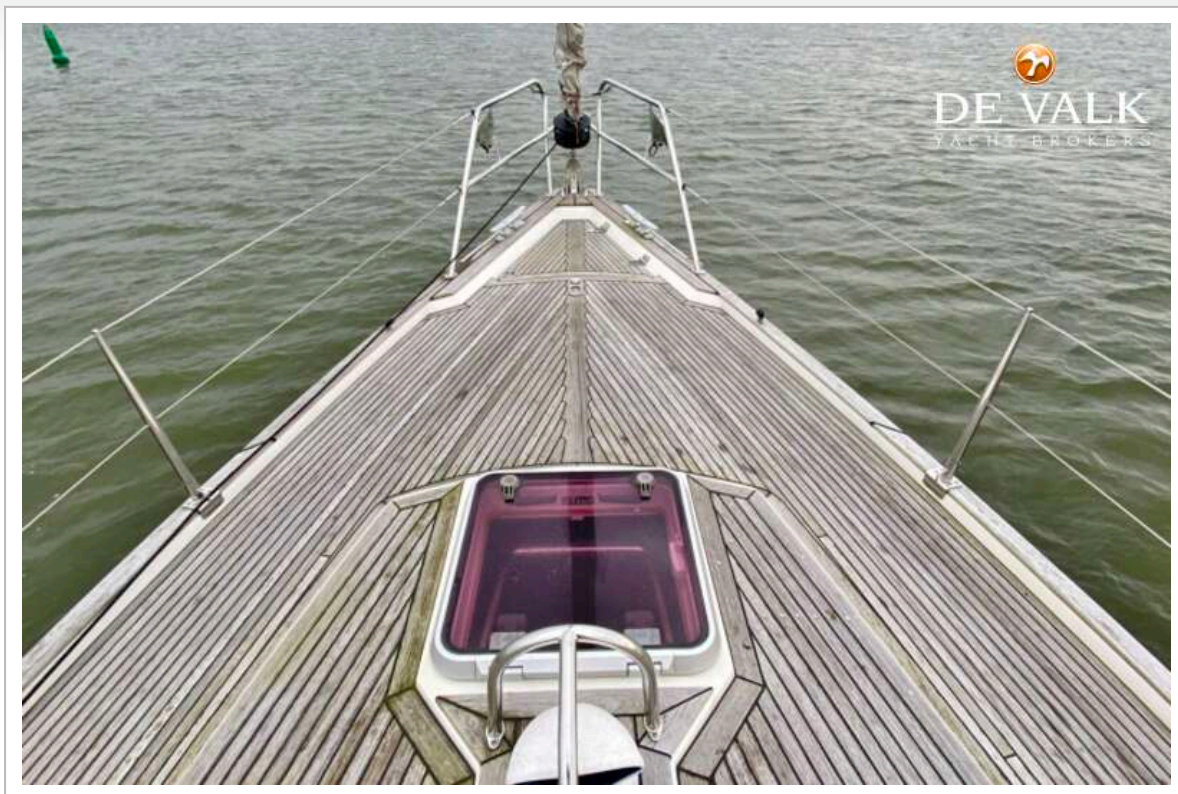




# MALO 43 CLASSIC



# MALO 43 CLASSIC





# MALO 43 CLASSIC



# MALO 43 CLASSIC





# MALO 43 CLASSIC



# MALO 43 CLASSIC

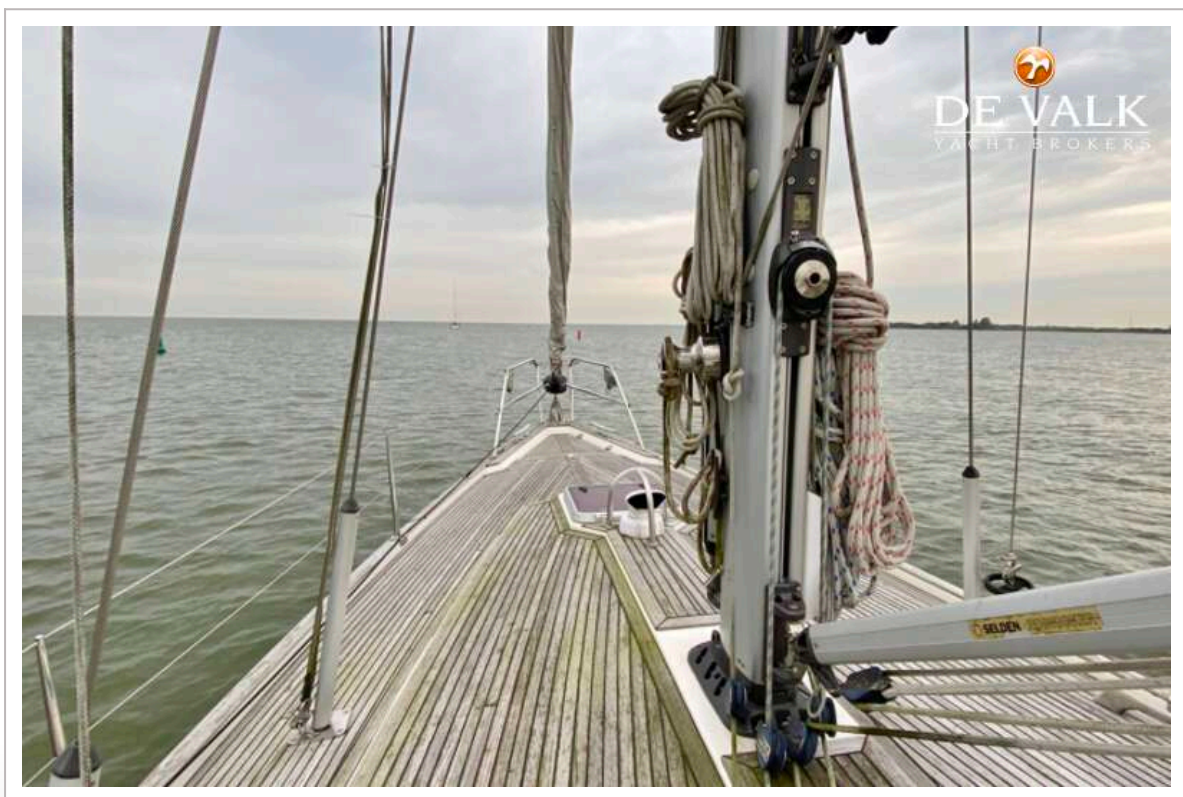




# MALO 43 CLASSIC



# MALO 43 CLASSIC





# MALO 43 CLASSIC

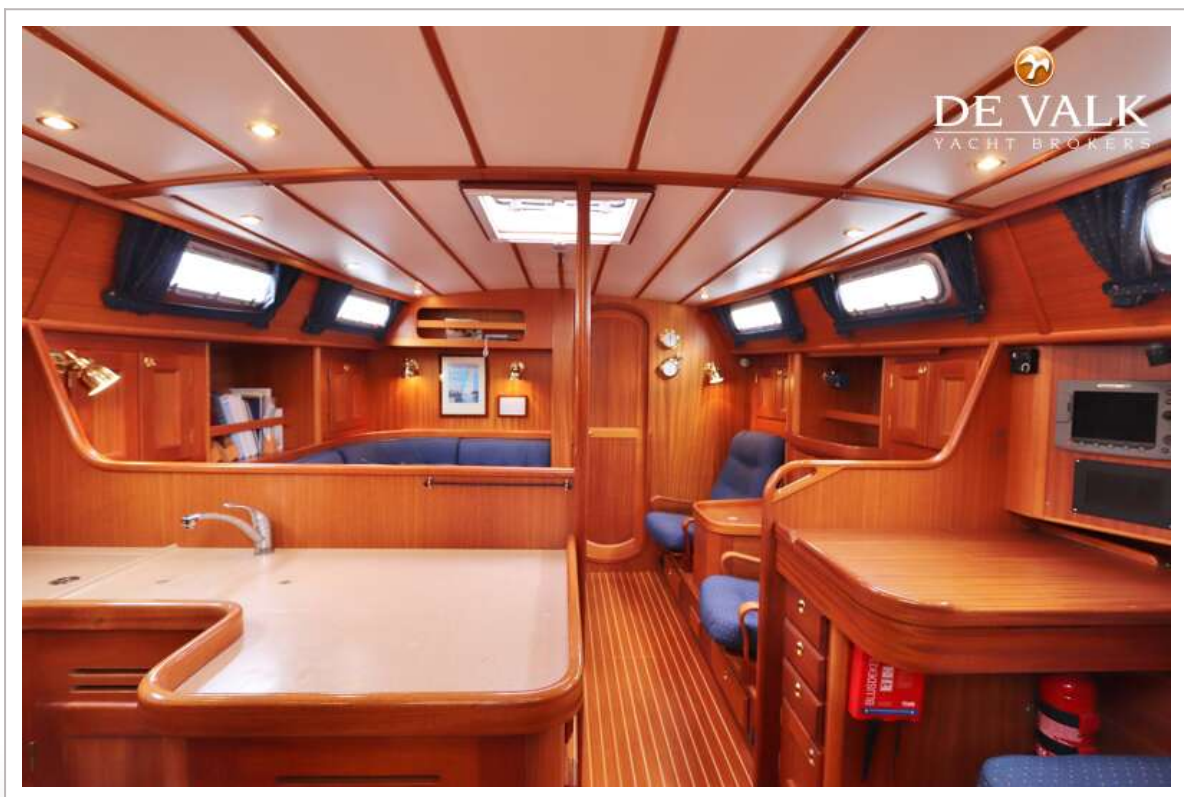
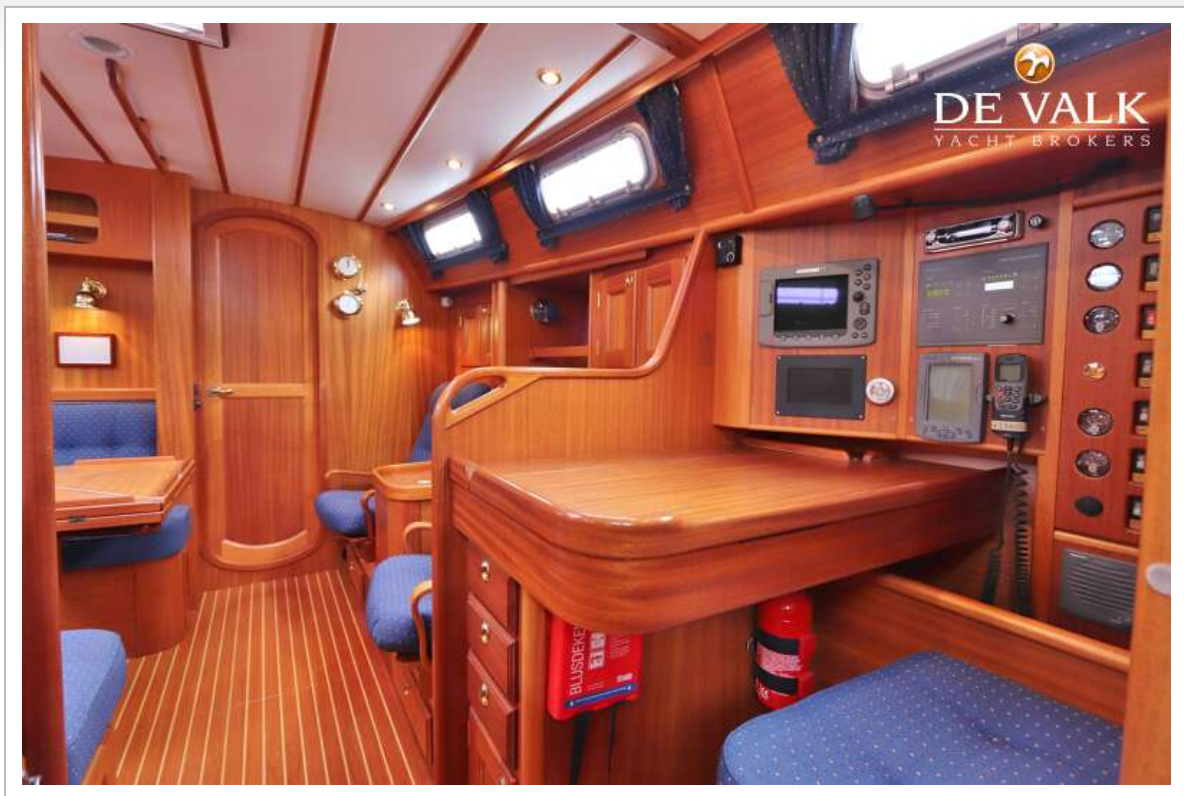


# MALO 43 CLASSIC

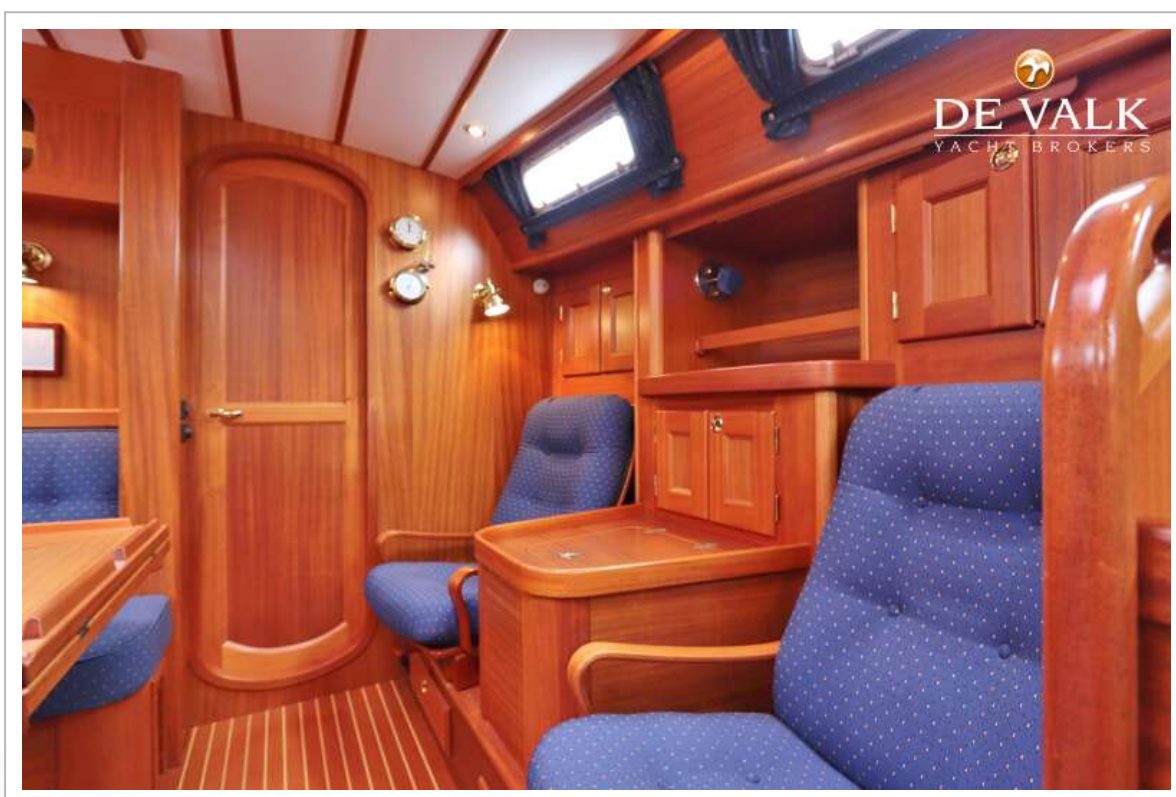




# MALO 43 CLASSIC

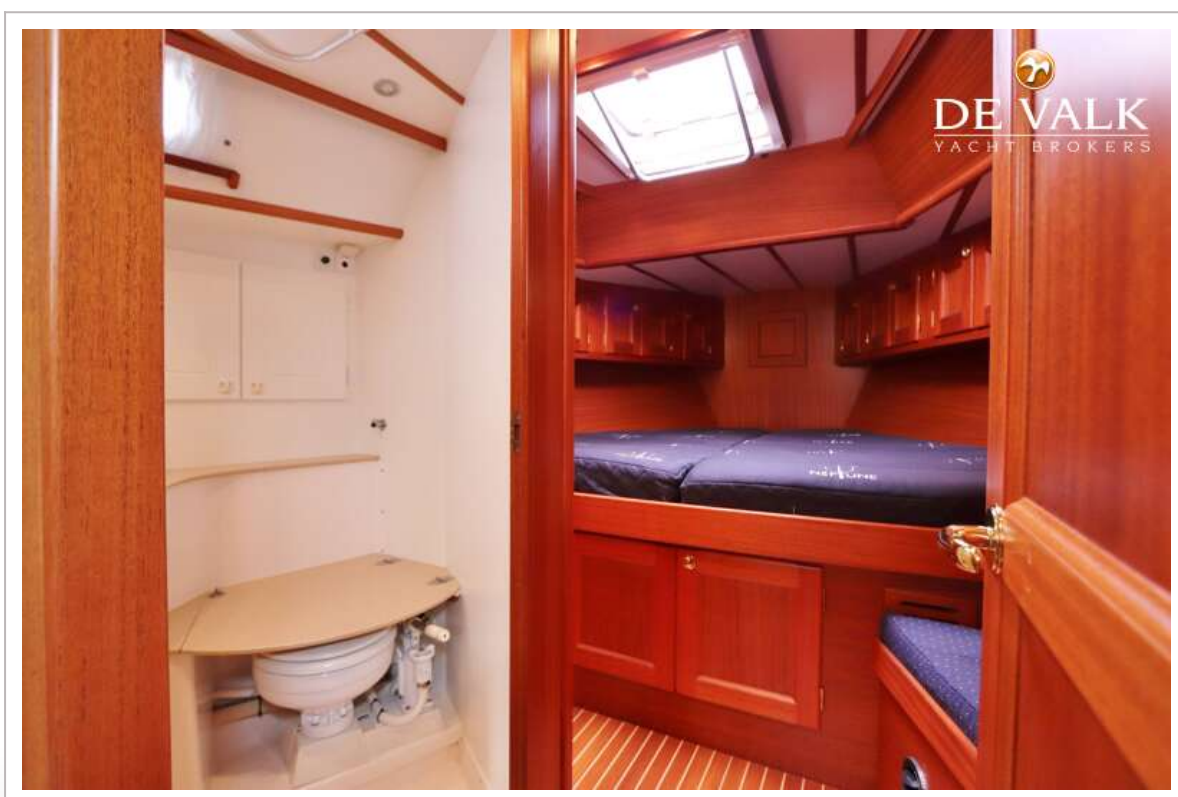


# MALO 43 CLASSIC





# MALO 43 CLASSIC



# MALO 43 CLASSIC

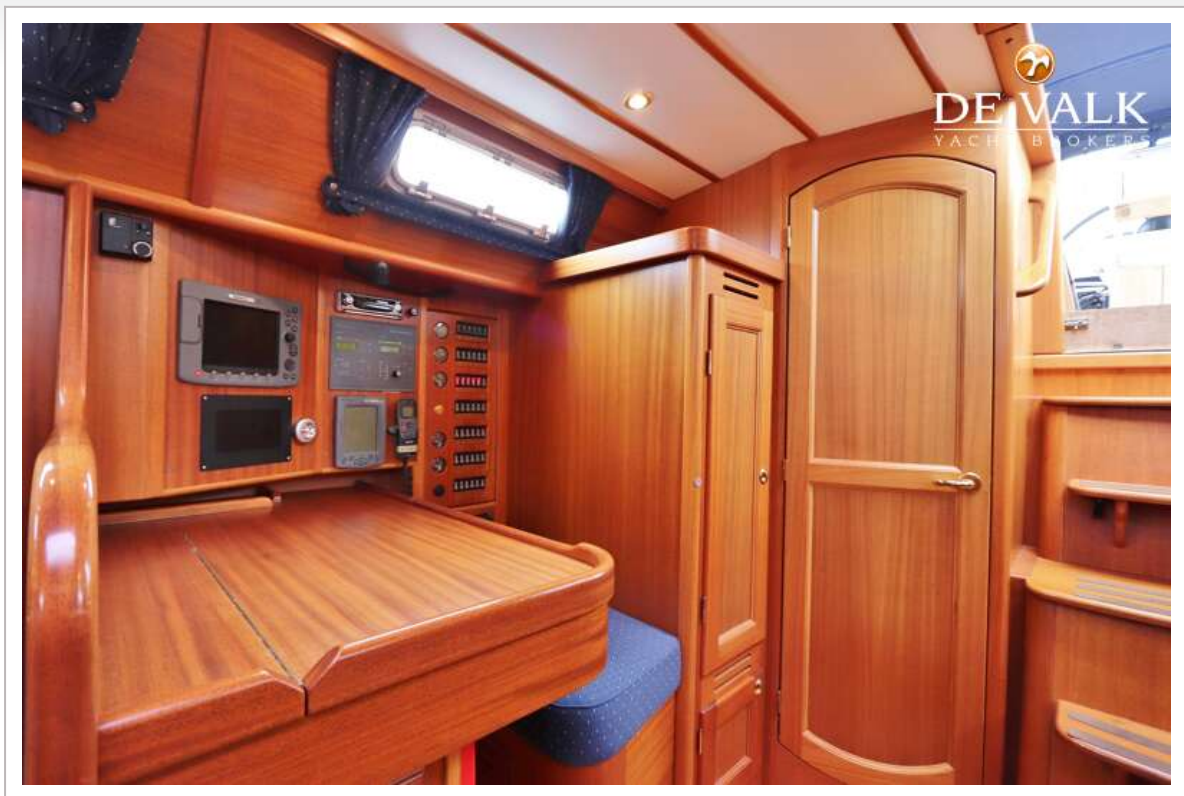




# MALO 43 CLASSIC



# MALO 43 CLASSIC





# MALO 43 CLASSIC



# MALO 43 CLASSIC

