



AQUANAUT PRIVILEGE 1400 OK FB

BROKER'S COMMENTS

Privilege 1400, is a special yacht built by the well-known Dutch shipyard AQUANAUT. With inside helm position, dinette, galley and open cockpit on the same level, the boat is very easy to use. In addition, she also has a fly bridge steering position, which makes sailing, maneuvering and mooring very nice and easy. Equipped with excellent equipment and well maintained, this yacht is suitable for long trips. The yacht can be viewed in in the north of the Netherlands after an appointment with De Valk Thuishaven

Ger Bayens

SPECIFICATIONS

Dimensions	14.69 x 4.35 x 1.25 (m)	Builder	Aquanaut
Built	2006	Cabins	2
Material	Steel	Berths	4
Engine(s)	1 x Perkins Sabre M185C diesel	Hp/Kw	185.00 (hp), 135.98 (kw)
Asking price	sold (VAT)	Lying	elsewhere / Not at sales office

CONTACT

Sales office	De Valk Thuishaven	Telephone	+31 35 5829042
Address	Peperstraat 7 1411 PX Naarden NL	E-mail	thuishaven@devalk.nl

DISCLAIMER

These particulars are given in good faith as supplied but cannot be guaranteed.



GENERAL

Model	AQUANAUT PRIVILEGE 1400 OK FB
Type	motor yacht
LOA (m)	14,69
LWL (m)	12,88
Beam (m)	4,35
Draft (m)	1,25
Air draft (m)	3,60
Air draft min (m)	2,70
Headroom (m)	2,10
Year built	2006
Launched	2007
Builder	Aquanaut
Country	The Netherlands
Designer	Jan Piet Bakker
Displacement (t)	18
CE norm	B
Hull material	steel
Hull colour	blue
Hull thickness (mm)	yes
Hull shape	multi hard chine
Keel type	box keel
Superstructure material	steel
Deck material	steel
Deck finish	cork
Superstructure deck finish	paint
Cockpit deck finish	cork
Antifouling (year)	2020
Dorades	2 x RVS
Window frame	aluminium
Window material	double glazing



Deckhatch	1 x with fly screen
Portholes	aluminium 8 x opening with fly screens
Insulation	airfoil
Flybridge	yes
Flybridge cover	yes
Flybridge cockpit cover	yes
Mast can be lowered	hydraulic
Fuel tank (litre)	steel 600
Fuel tank 2 (litre)	steel 600
Level indicator (fuel tank)	yes
Freshwater tank (litre)	stainless steel 800
Level indicator (freshwater)	yes
Blackwater tank (litre)	stainless steel 150
Level indicator (blackwater)	yes
Blackwater tank extraction	deck extraction + uw line
Wheel steering	hydraulic Vetus MTC 7210
Inside helm position	yes
Flybridge helm position	hydraulic
Emergency tiller	yes

ACCOMMODATION

Cabins	2
Berths	4
Interior	teak Complete new upholstery in salon
Floor	teak and holly
Open cockpit	yes
Pilot house/deck saloon	yes
Headroom saloon (m)	2,10
Heating	central heating Kabola B12 Tap 14 Kw
Air-conditioning	reverse cycle airco Webasto in owners cabin
Navigation center	yes



Dinette	yes
Sliding door to cockpit	with fly screen and venetian blinds Teak
Galley	yes
Countertop	wood
Sink	stainless steel
Cooker	induction Siemens 2 flame
Microwave/oven combi	Atag
Fridge	Liebherr
Freezer	Liebherr
Hot water system	on central heating
Water pressure system	electrical
Manual and/or foot pump	Salt water (disconnected)
Owners cabin	French bed
Bed length (m)	220 x 160
Wardrobe	hanging/drawers/shelves
Bathroom	separate
Toilet	separate
Toilet system	electric
Wash basin	in the bathroom
Shower	separate
Guest cabin 1	double bed
Bed length (m)	200 x 120
Wardrobe	hanging and shelves
Bathroom	shared
Toilet	shared
Toilet system	electric
Wash basin	in the bathroom
Shower	shared
Washing machine/dryer combi	AEG electrolux Lavamat Turbo
Extra info	Dinette can be converted in a double



MACHINERY

No of engines	1
Make	Perkins Sabre
Type	M185C
HP	185
kW	135,98
Fuel	diesel
Year installed	2006
Maximum speed (kn)	7
Cruising speed (kn)	9
Consumption (l/hr)	8
Engine hours	1887
Engine cooling system	freshwater heat exchanger
Drive	shaft
Shaft seal	yes
Engine controls	electrical
Gearbox	hydraulic PRM1000D with tralling valve
Bowthruster	hydraulic Vetus proportional
Sternthruster	hydraulic Vetus proportional
Exhaust	watercooled
Thrust bearing	Python
Propeller type	fixed 25x21,5RH
Propeller blades	5
Propeller shaft material	stainless steel
Shaft lubrication	water
Manual bilge pump	1 x
Electric bilge pump	2 x
Bilge alarm	yes
Electrical installation	12&24 V DC and 230V AC
Generator	wet exhaust Mastervolt Whisper 6 Ultra in box
Running hours generator	80



Batteries	8 x 220 AH & 1 x 88 AH
Start battery	2 x 220 Ah for 220AH 24 V. (2019)
Service battery	6 x 12 V 220 AH for 660 Ah 24 V
Generator battery	1 x 88 Ah
Battery monitor	Mastervolt
Battery charger	2 x Mastervolt 24/75 & 1 x 12 V 10Ah
Inverter	Mastervolt 2500 W
Diode battery combiners	yes
Shorepower	with cable
Insulation transformer	Mastervolt Ivet-D 16/3.5
Stabilizers	fin Static
Extra info	Double Separ fuel Filter and double coolwater intake
Extra info	Mastervolt systemswitch 6

NAVIGATION

Electric compass	Raymarine
Depth sounder/log	Raymarine ST50 Tridata
VHF	Icom M505
VHF handheld	yes
Autopilot	Raymarine St6000 dual station plus remote
Rudder angle indicator	Raymarine
Radar/GPS/plotter	Raymarine E80
Electronic chart(s)	Navionics
Navigation lights	yes

EQUIPMENT

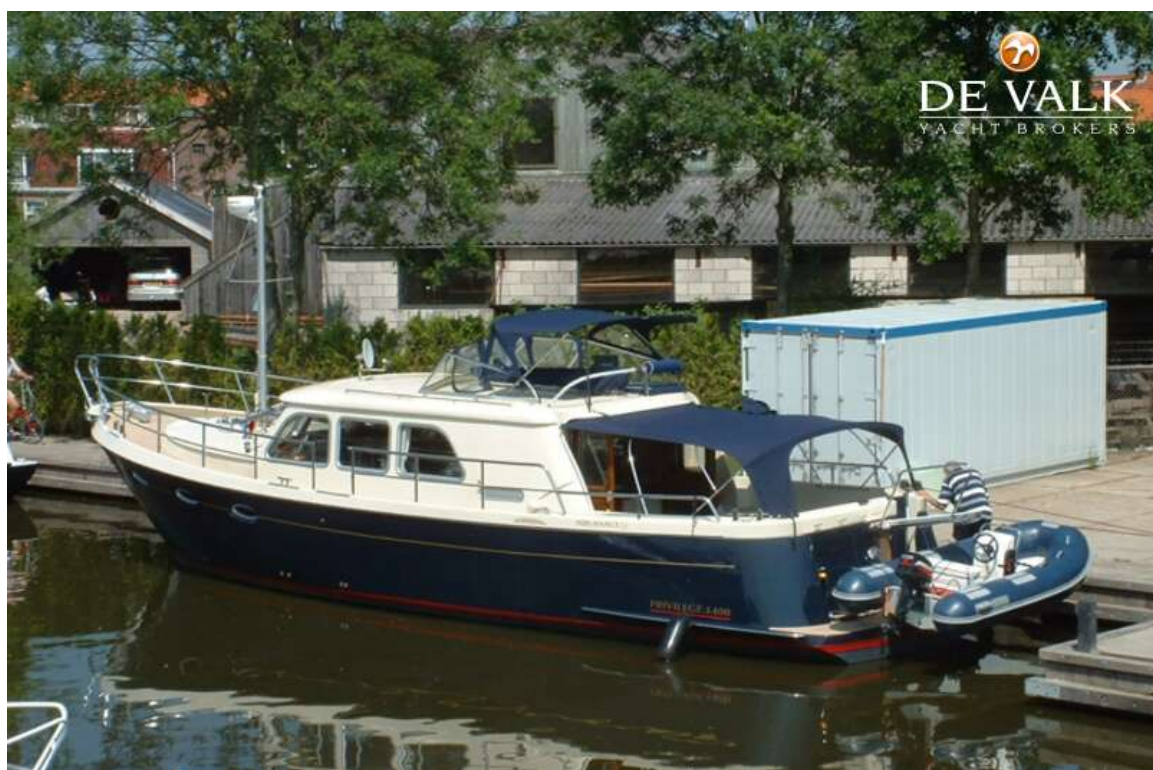
Fixed windscreen	yes
Sprayhood	yes
Cockpit cover	yes
Dodger	yes
Winter cover	yes



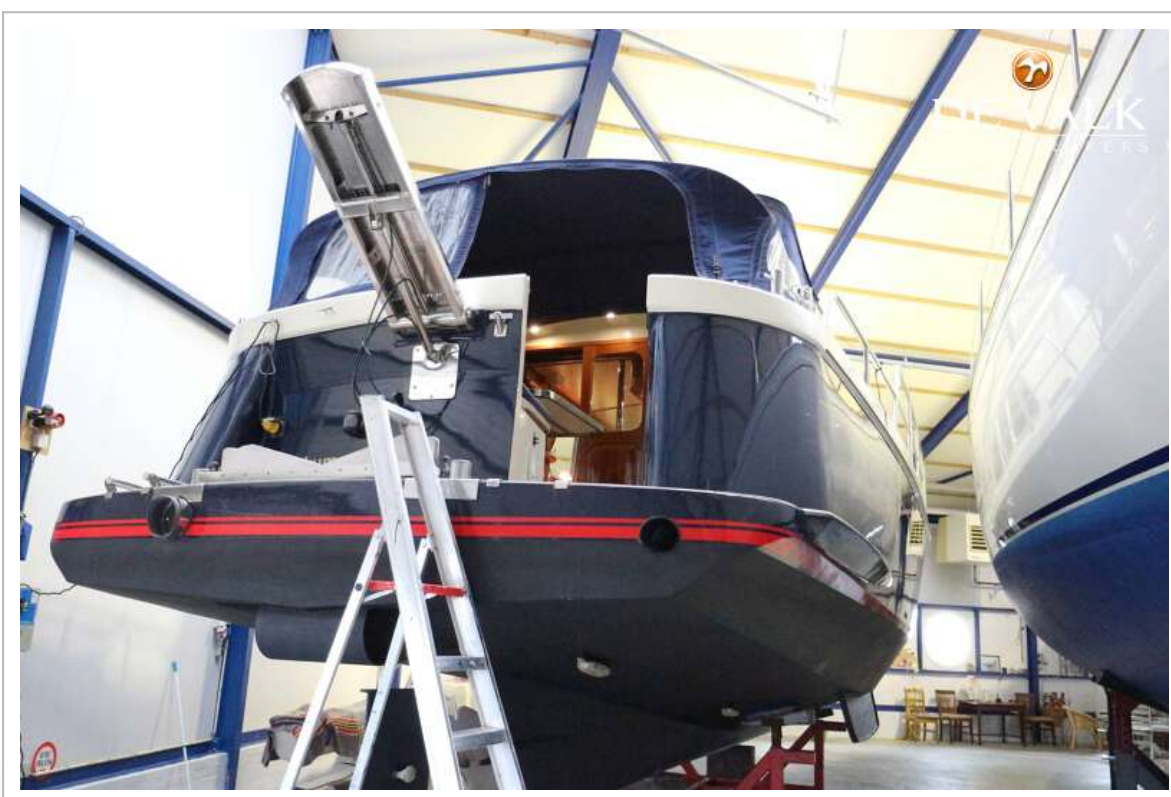
Cockpit cushions	yes
Cockpit table	yes
Bathing platform	yes
Boarding ladder	stainless steel
Transom door	yes
Gangway	Hydraulic and used as dinghy lift
Deck shower	yes
Anchor	Delta 20
Anchor chain	20 M.
Windlass	electrical Vetus with twin electric remote controls
Sea railing	stainless steel
Railing side opening gates	yes
Pushpit	yes
Wiper	3 x
Horn	
Radar reflector	yes
Fenders	yes
Mooring lines	yes
TV	yes
Radio-cd player	Pioneer
Speakers in salon	4 x
Clock - barometer	yes
Fire extinguisher	3 x
Extinguisher in engine room	yes

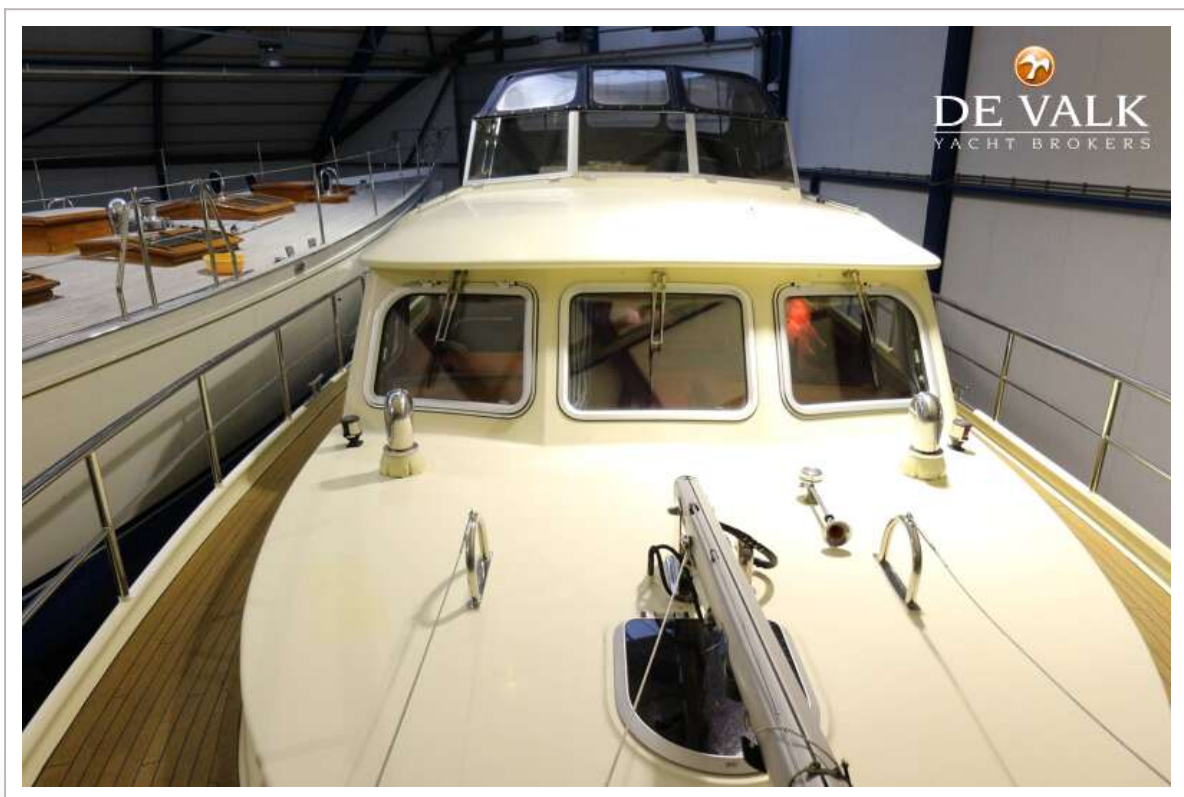
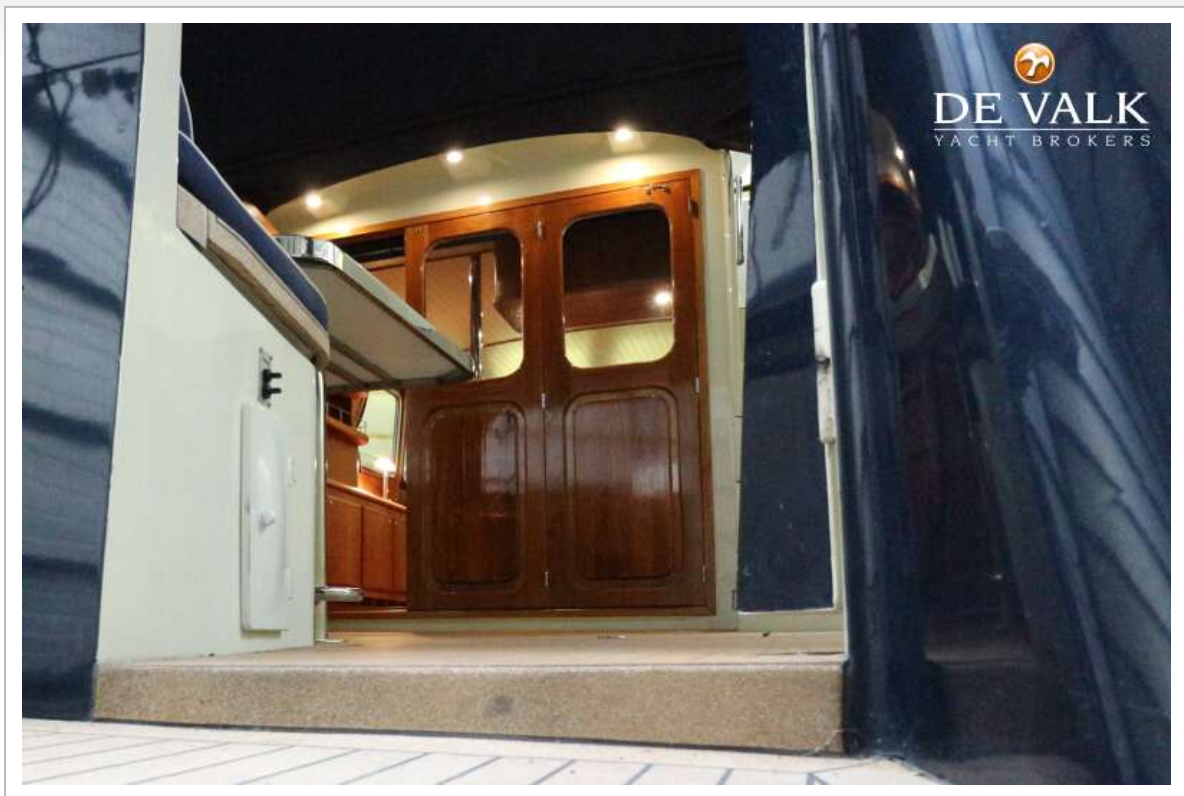


AQUANAUT PRIVILEGE 1400 OK FB













AQUANAUT PRIVILEGE 1400 OK FB



AQUANAUT PRIVILEGE 1400 OK FB



AQUANAUT PRIVILEGE 1400 OK FB

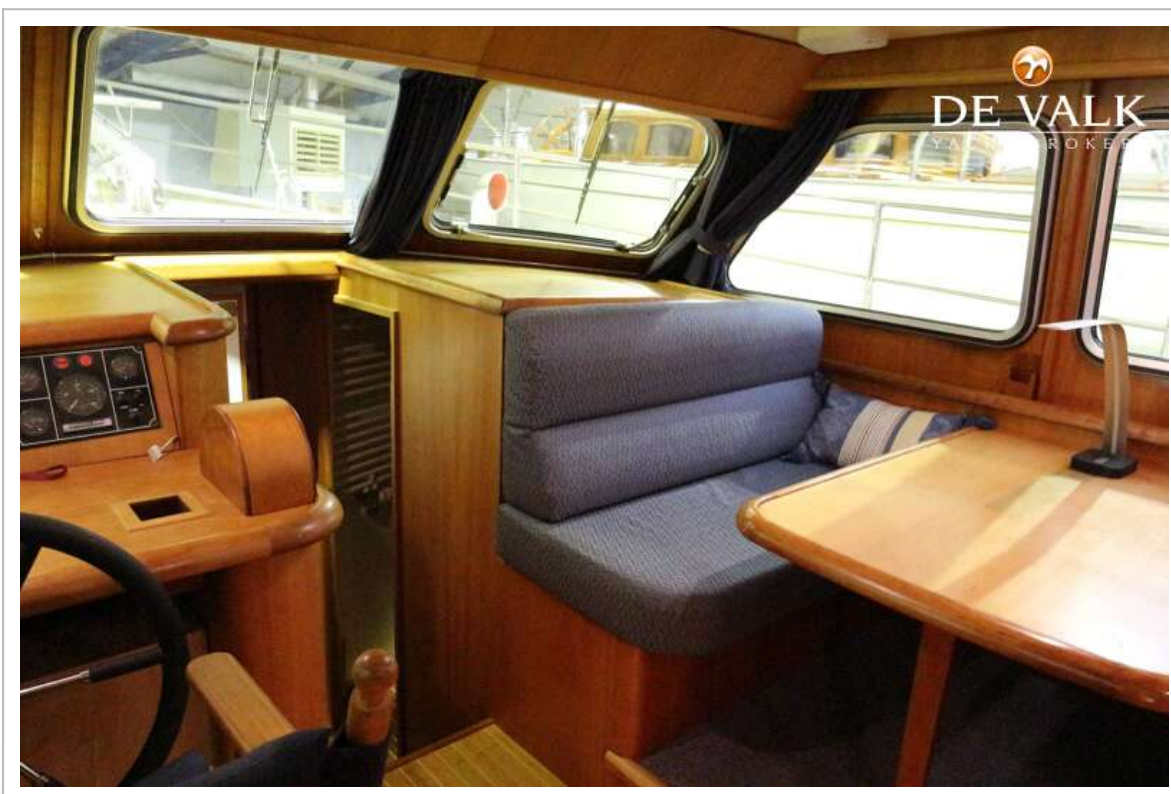








AQUANAUT PRIVILEGE 1400 OK FB



AQUANAUT PRIVILEGE 1400 OK FB



AQUANAUT PRIVILEGE 1400 OK FB





