



BARKAS 1200 OK

  
**DE VALK**  
YACHT BROKERS

# BARKAS 1200 OK

## BROKER'S COMMENTS

Barkas 1200 is a sturdy Dutch steel motor yacht, built by Rego Watersport, designed by L.M. Huitema. The open cockpit, wheelhouse / deck saloon and galley on the same level makes moving on board very easy. "Lisa" is well equipped for both short and long stays on board in all seasons. The shallow depth and low minimum air clearance give the ship many options in terms of sailing area. Technical and interior look fine, but she needs a new paint job. For more information or a visit, by appointment, in her home port, we look forward to hear from you.

*Ger Bayens*

## SPECIFICATIONS

<b>Dimensions</b>	12.00 x 4.05 x 1.10 (m)	<b>Builder</b>	REGO WATERSPORT BV
<b>Built</b>	2005	<b>Cabins</b>	2
<b>Material</b>	Steel	<b>Berths</b>	5
<b>Engine(s)</b>	1 x Vetus DT 43455A diesel	<b>Hp/Kw</b>	106.00 (hp), 78.00 (kw)
<b>Asking price</b>	sold (VAT )	<b>Lying</b>	elsewhere / Not at sales office

## CONTACT

<b>Sales office</b>	De Valk Thuishaven	<b>Telephone</b>	+31 35 5829042
<b>Address</b>	Peperstraat 7 1411 PX Naarden NL	<b>E-mail</b>	thuishaven@devalk.nl

## DISCLAIMER

These particulars are given in good faith as supplied but cannot be guaranteed.



## GENERAL

Model	BARKAS 1200 OK
Type	motor yacht
LOA (m)	12,00
Beam (m)	4,05
Draft (m)	1,10
Air draft (m)	4,95
Air draft min (m)	2,70
Headroom (m)	1,95
Year built	2005
Builder	REGO WATERSPORT BV
Country	The Netherlands
Designer	L.M. Huitema
Displacement (t)	14
CE norm	C
Hull material	steel
Hull colour	blue
Hull shape	multi hard chine
Superstructure material	steel
Rubbing strake	fender rope
Deck material	steel
Deck finish	non-skid paint
Superstructure deck finish	non-skid paint
Cockpit deck finish	teak Repair needed / reparatie nodig
Dorades	ss flat type 6
Window frame	aluminium 3x te openen ramen in de salon /3x opening windows in the saloon
Window material	double glazing
Deckhatch	Gebo
Portholes	aluminium
Insulation	rockwool
Mast can be lowered	electric



# BARKAS 1200 OK

Fuel tank (litre)	steel 800
Level indicator (fuel tank)	yes
Freshwater tank (litre)	polyethylene 800 (2x 400)
Level indicator (freshwater)	yes
Blackwater tank (litre)	polyethylene Dometic Holding Tank System Model HTS 28 / 106 Ltr
Level indicator (blackwater)	4 level monitor system Dometic Tankwatch
Blackwater tank extraction	deck extraction + pump
Wheel steering	hydraulic
Emergency tiller	yes
More info on paintwork	Exterior hull and superstructure need paint job
Extra info	Escape hatch above the master bedroom is heated/condense free GEBO (2017)
Extra info	Various mosquito screens for windows and portholes available

## ACCOMMODATION

Cabins	2
Berths	5
Interior	teak
Layout	salon/stuurhuis, 2 hutten, gescheiden toilet en douche
Floor	teak and holly
Open cockpit	yes
Pilot house/deck saloon	yes
Headroom saloon (m)	1,95
Heating	central hot water Webasto Thermo 90S (2020)
Convertible berth	1 person, on starboard in the saloon
Opening door to cockpit	double opening doors
Galley	yes
Countertop	plastic
Sink	stainless steel
Cooker	induction 4 pits
Microwave/oven combi	with Grill Pelgrim



# BARKAS 1200 OK

Fridge	with freezer compartment Isotherm 12V
Freezer	in drawer Waeco 12V
Hot water system	220V + engine
Water pressure system	electrical
Owners cabin	French bed
Bed length (m)	2,00 x 1,50
Wardrobe	hanging/drawers/shelves
Bathroom	separate
Toilet	separate
Toilet system	electric Cerit
Wash basin	at the toilet
Shower	separate Met lucht afzuiging / with air extraction
Extra info	extractor hood
Guest cabin 1	double bed
Bed length (m)	1,90 x 1,60
Wardrobe	hanging/drawers/shelves
Bathroom	shared
Toilet	shared
Washing machine/dryer combi	Indesite WIDL 12,6 4 KG
Extra info	ceiling lights salon dimmable, lots of storage space, luxurious drawer systems.
Extra info	Interior is neat, in 3 spots there is minor water damage

## MACHINERY

No of engines	1
Make	Vetus
Type	DT 43455A
HP	106
kW	78
Fuel	diesel
Year installed	2005



# BARKAS 1200 OK

Maximum speed (kn)	7,5
Cruising speed (kn)	6,5
Consumption (l/hr)	5,1
Range (nm)	1000
Engine hours	1725
Engine cooling system	freshwater heat exchanger
Drive	shaft
Engine controls	bowden cable
Gearbox	hydraulic ZF-Hurth
Bowthruster	electric Vetus 100 Kgf
Exhaust	watercooled
Thrust bearing	yes
Propeller type	fixed
Propeller shaft material	stainless steel
Shaft lubrication	water
Electric bilge pump	2x
Electrical installation	12/230V
Generator	dry exhaust Paguro 6000 / 6,5 Kw
Running hours generator	697
Batteries	yes
Start battery	1x SHD 12V 140Ah (2015)
Service battery	2x Traktion-Power 12V 225Ah (2015)
Bowthruster battery	2x Traktion-Power 12V 225Ah (2015)
Battery monitor	Victron Phoenix Multicontrol / Vetus Battery Watch
Battery charger/inverter	Victron Phoenix Multi 12/1600/70

## NAVIGATION

Electric compass	at auto helm Raymarine P70R (2015)
VHF	ICOM IC-M323
Autopilot	Raymarine (2015)
Rudder angle indicator	Vetus



Navigation lights

yes

## EQUIPMENT

Cockpit cover

and door awning

Bathing platform

yes

Boarding ladder

stainless steel Opklabbaar / foldable

Gangway

aluminium

Anchor

Pool

Anchor chain

30 Mtr

Windlass

manual Lofrance Royal

Deck wash

yes

Sea railing

stainless steel

Grab rail (superstructure)

stainless steel

Railing side opening gates

2x

Pushpit

yes

Pulpit

yes

Lifebuoy

yes

Wiper

double arme 3x

Horn

electric

Fenders

yes

Mooring lines

yes

TV

Panasonic

TV receiver

expired Digitenne

Radio-cd player

Sony Bluetooth

Speakers in salon

4x

Fire extinguisher

2x

Latest extinguisher survey

unknown

Auto extinguisher system

in engine room

Extra info

adjustable to regular seat Stuurstoel / helmsman's seat

## RIGGING



Material mast

wood





# BARKAS 1200 OK



# BARKAS 1200 OK





# BARKAS 1200 OK



# BARKAS 1200 OK



# BARKAS 1200 OK





# BARKAS 1200 OK



# BARKAS 1200 OK



# BARKAS 1200 OK





# BARKAS 1200 OK

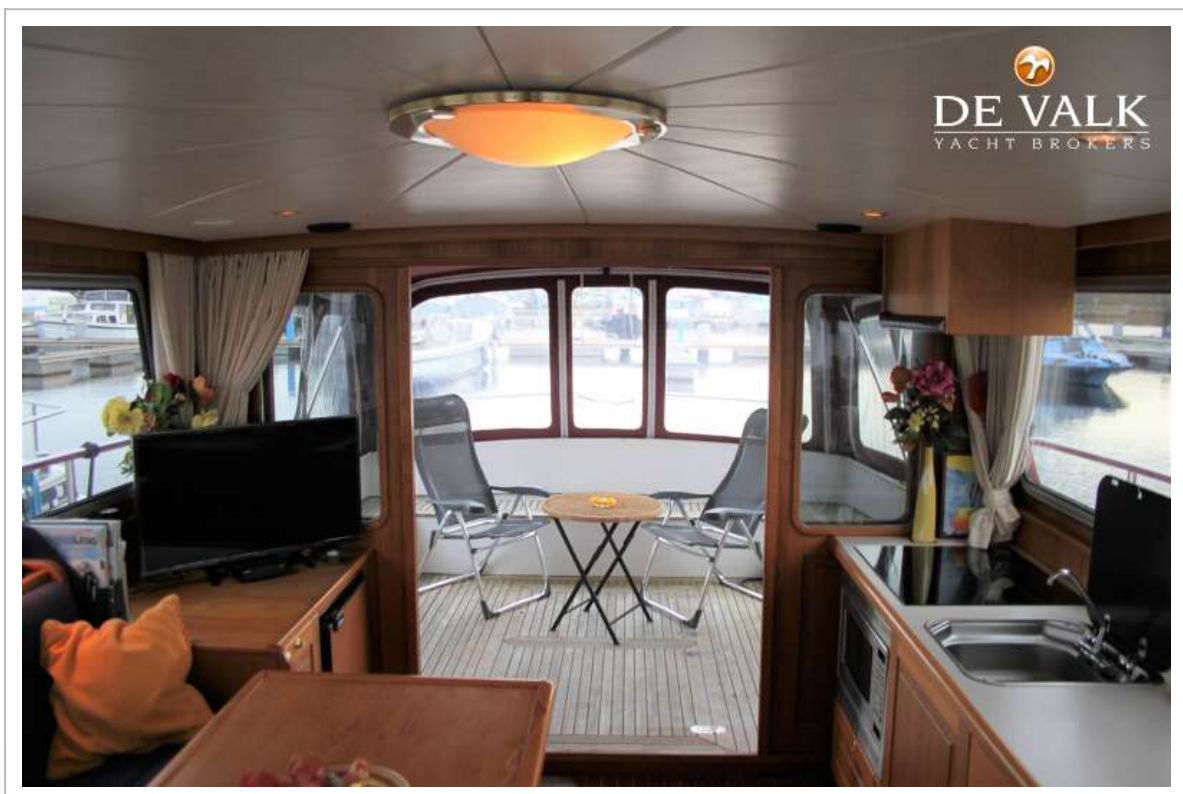
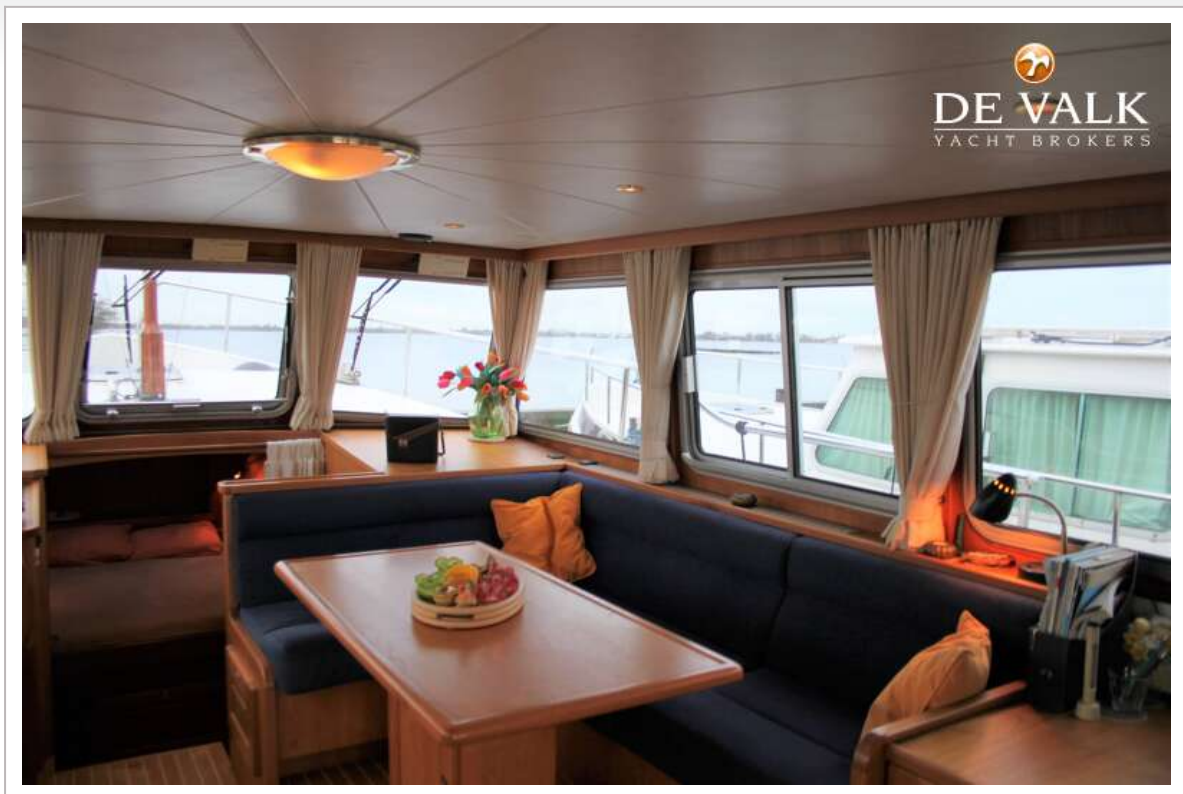


# BARKAS 1200 OK

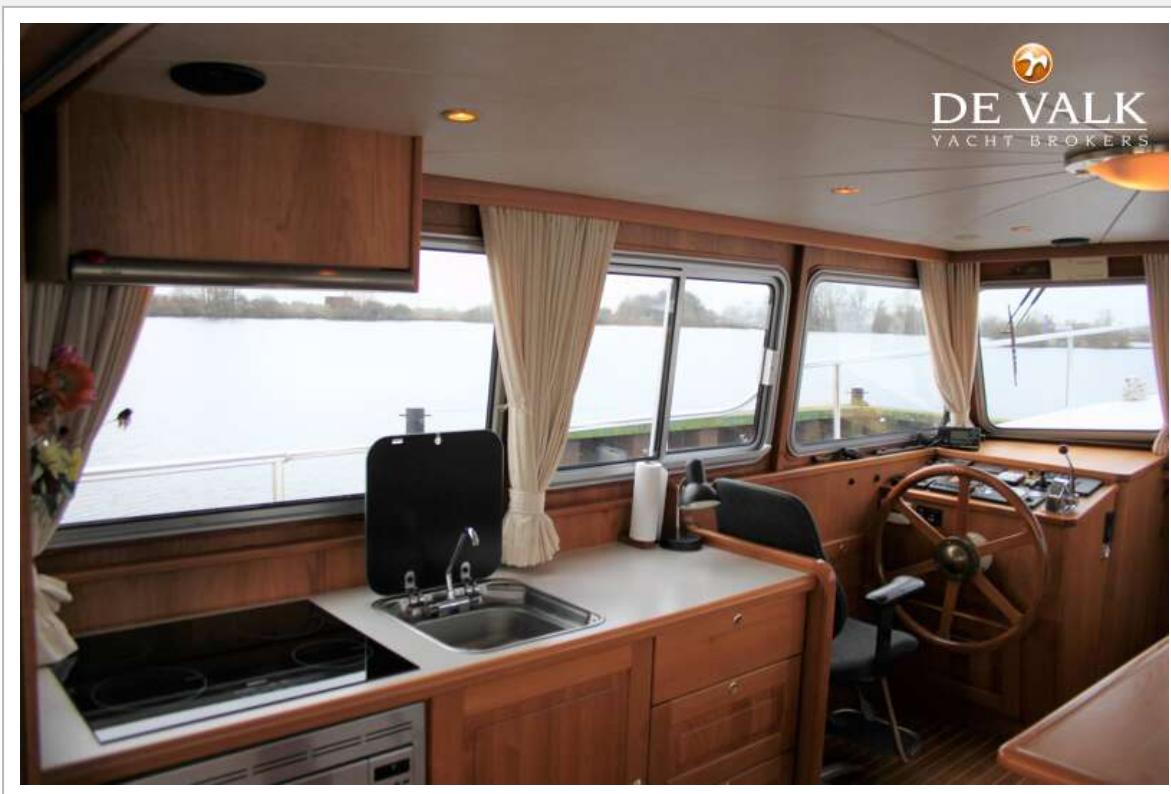




# BARKAS 1200 OK

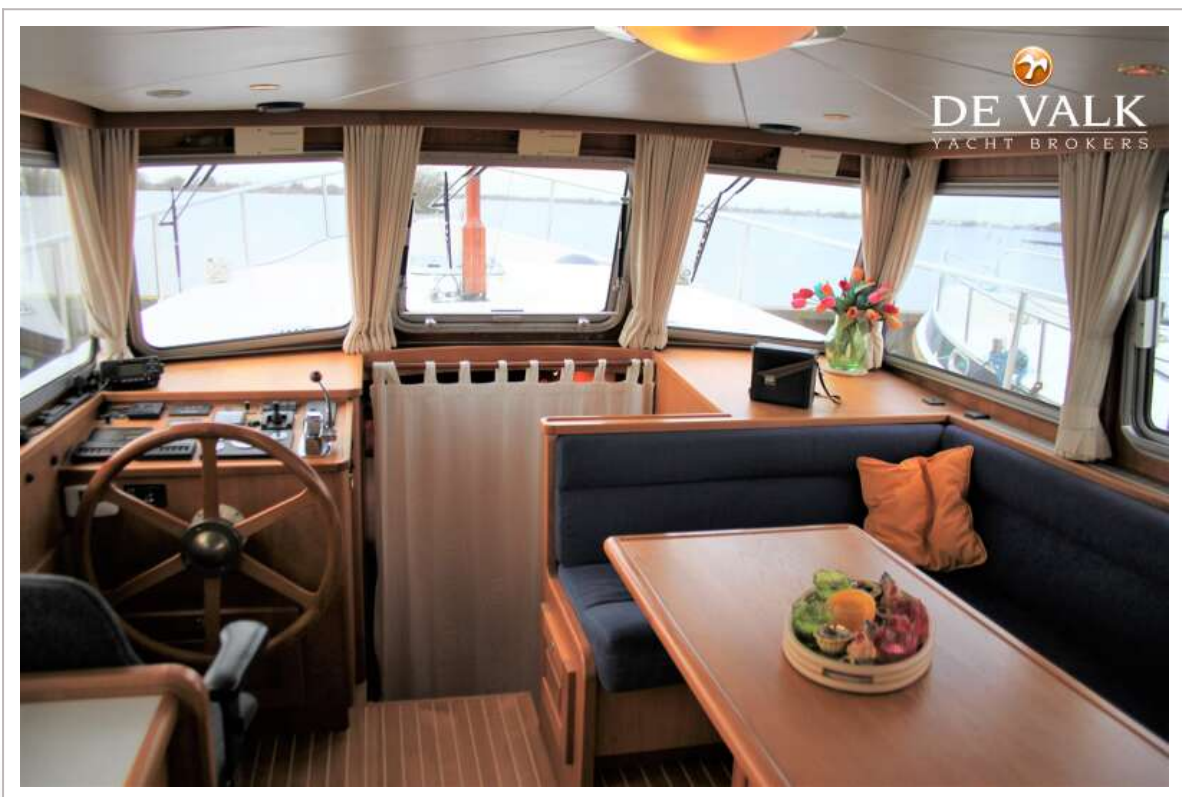
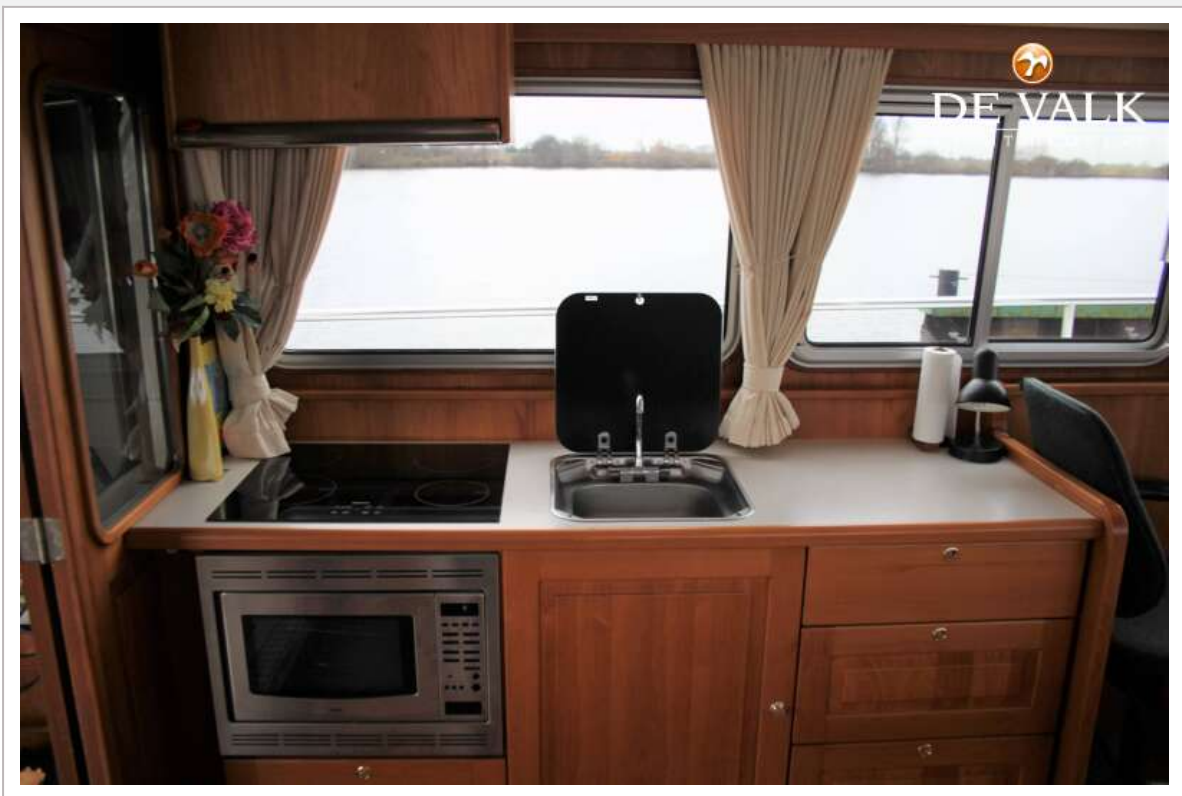


# BARKAS 1200 OK

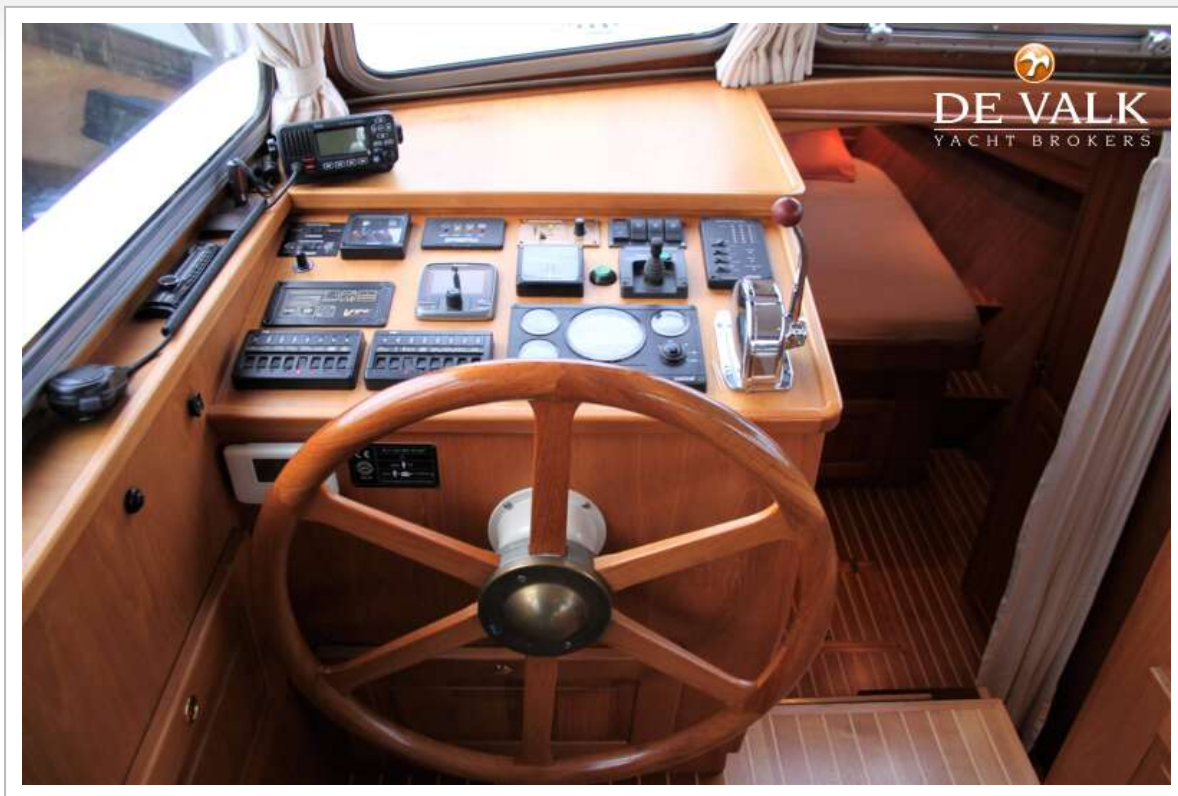




# BARKAS 1200 OK

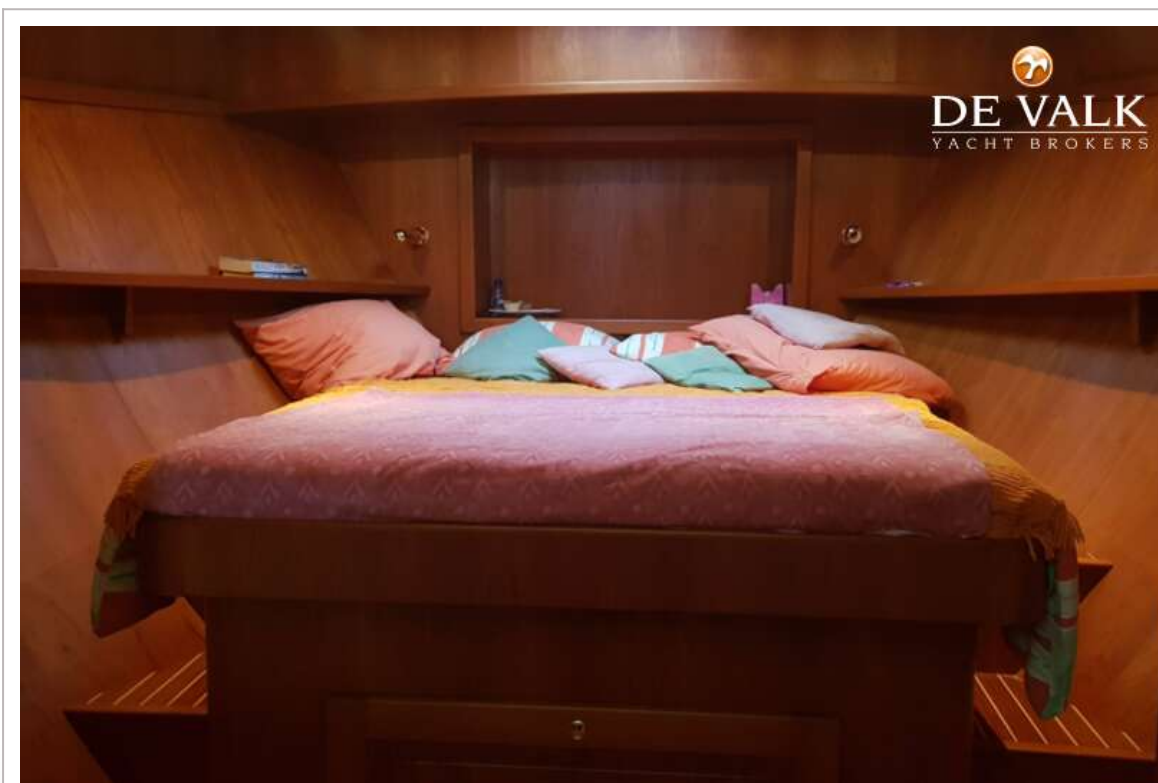
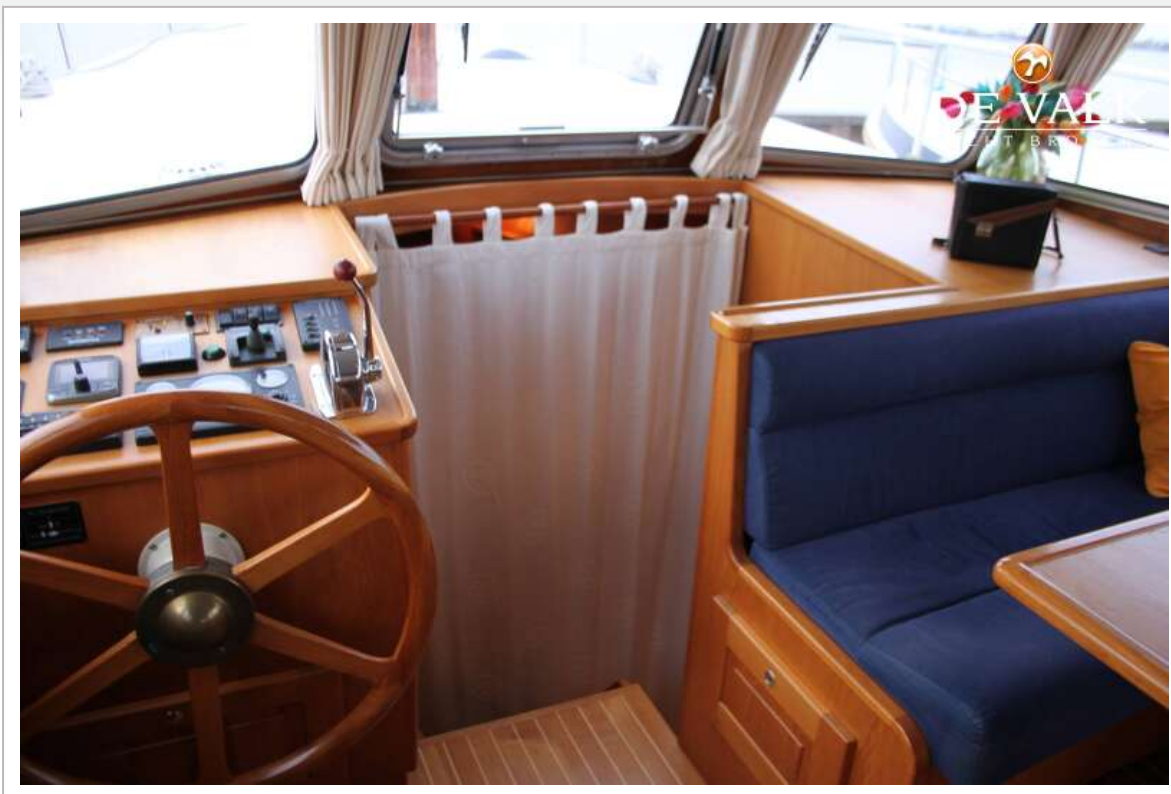


# BARKAS 1200 OK

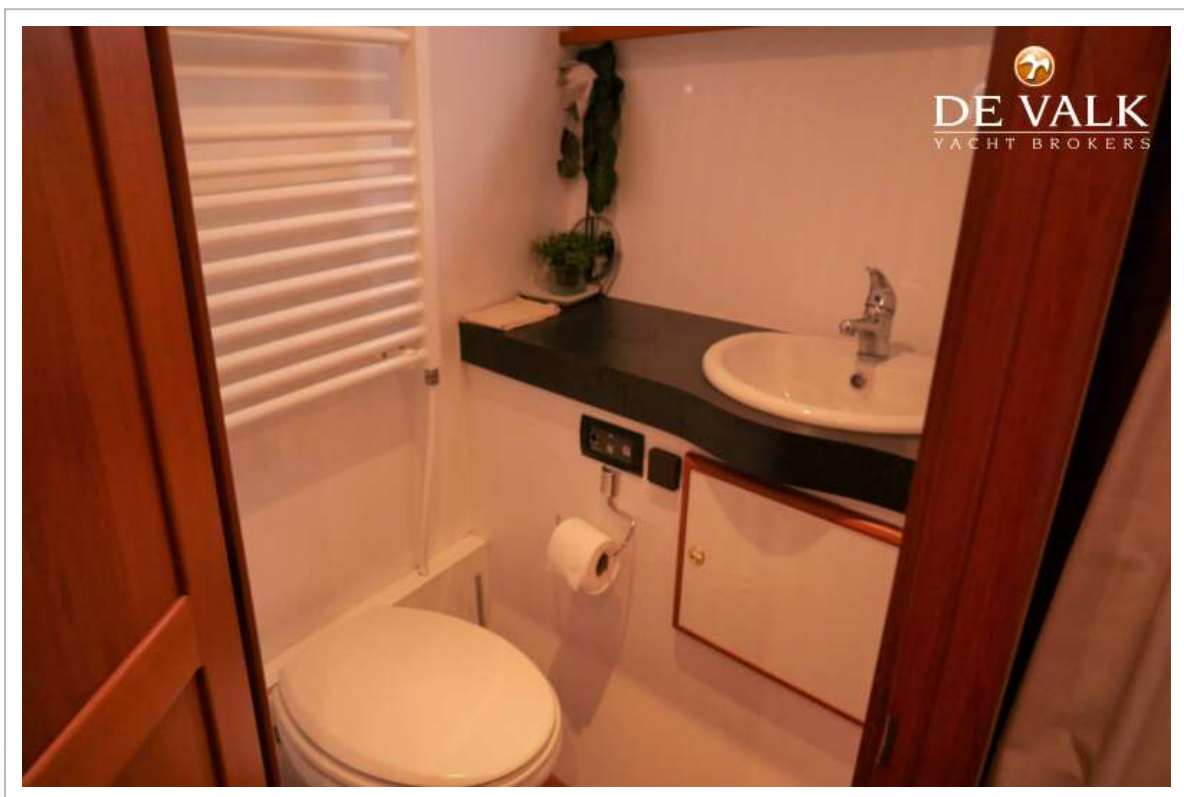




# BARKAS 1200 OK

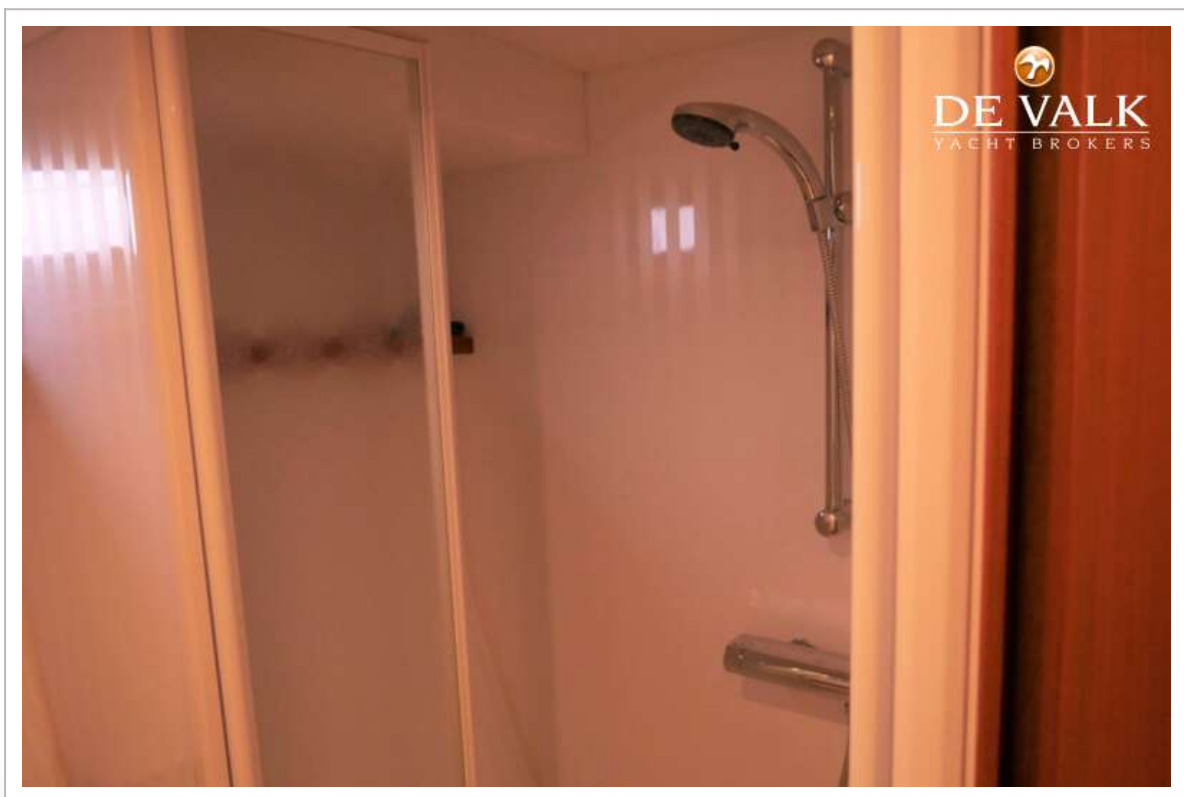


# BARKAS 1200 OK





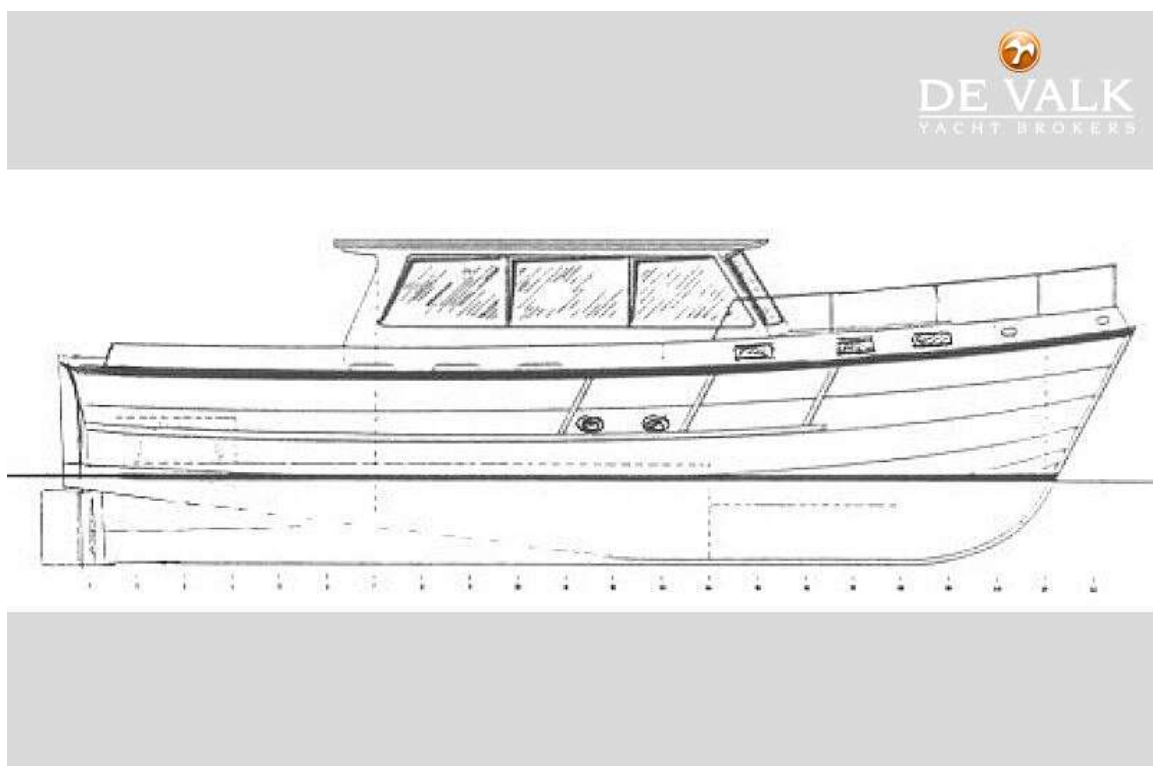
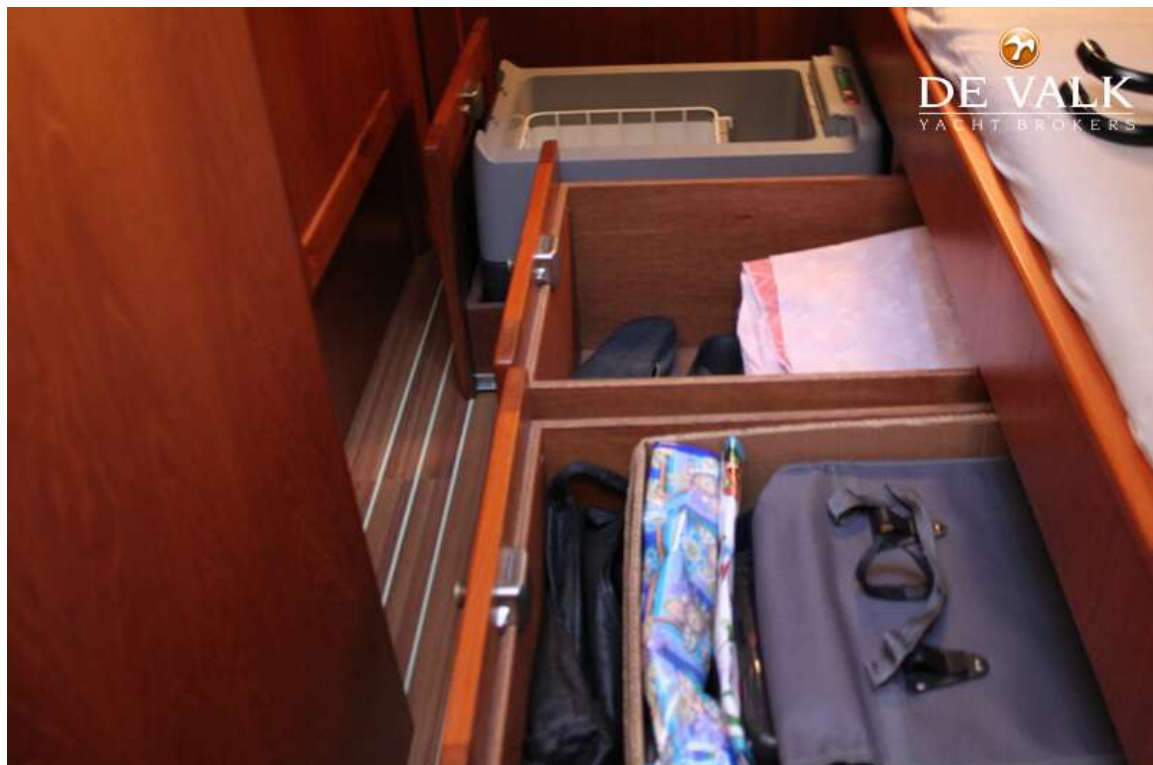
# BARKAS 1200 OK



# BARKAS 1200 OK

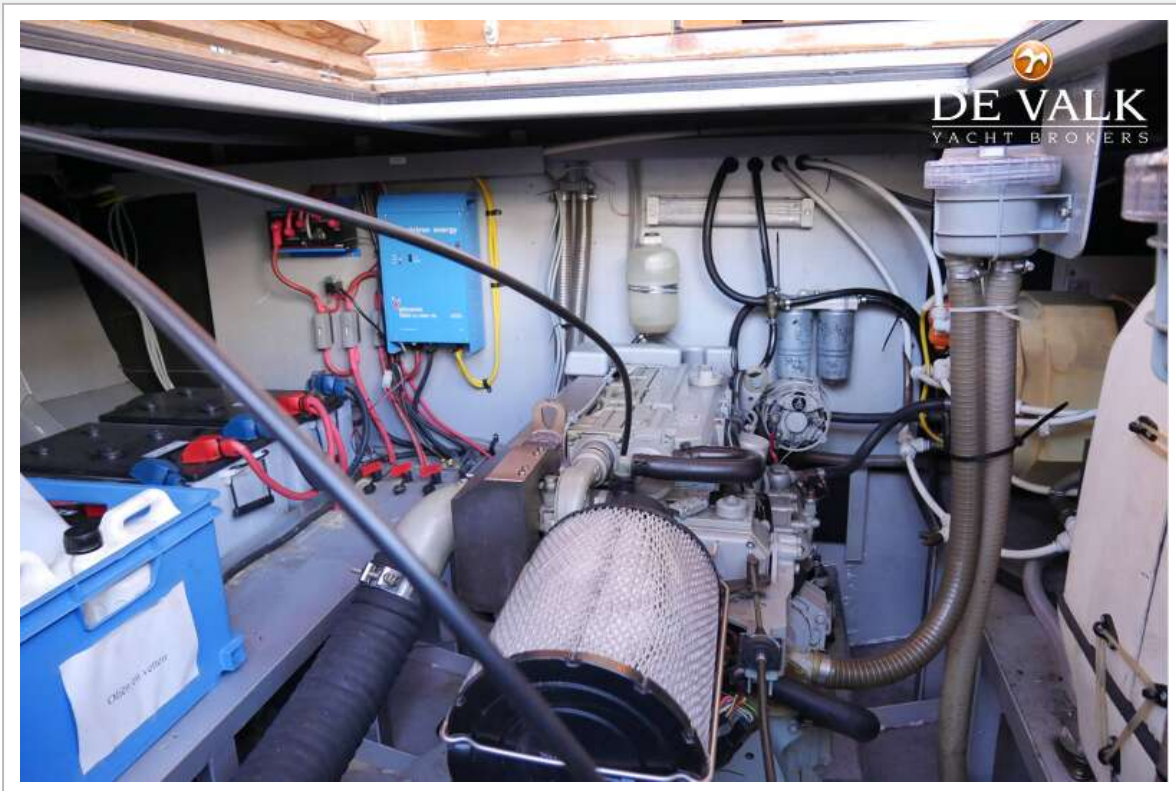


# BARKAS 1200 OK





# BARKAS 1200 OK



# BARKAS 1200 OK



