



DEHLER 36 CWS



BROKER'S COMMENTS

This Dehler 36 CWS has excellent sailing performances, German built quality and with the central winch system and self tacking jib, she is easy to handle under all conditions. Ample headroom, stowage space and sleeping arrangements for captain and crew below decks. The interior, contemporary with nice mahogany looks and ample ventilation. This Dehler 36 CWS is well maintained, has lots of renewings and is ready for viewing on shore in Sint Annaland!

Joris van de Rijt

SPECIFICATIONS

Dimensions	11.40 x 3.50 x 1.85 (m)	Builder	Dehler Yachtbau GmbH
Built	1992	Cabins	2
Material	GRP	Berths	6
Engine(s)	1 x Yanmar 3 GM 30F diesel	Hp/Kw	27.00 (hp), 19.85 (kw)
Asking price	sold (VAT)	Lying	at sales office

CONTACT

Sales office	De Valk Sint Annaland B.V.	Telephone	+31 (0)166 601 000
Address	Koelhuisweg 4 4697 RM Sint Annaland NL	E-mail	sintannaland@devalk.nl

DISCLAIMER

These particulars are given in good faith as supplied but cannot be guaranteed.



GENERAL

Model	DEHLER 36 CWS
Type	sailing yacht
LOA (m)	11,40
LWL (m)	9,00
Beam (m)	3,50
Draft (m)	1,85
Air draft (m)	17,00
Headroom (m)	1,90
Year built	1992
Builder	Dehler Yachtbau GmbH
Country	Germany
Designer	Van de Stadt & Partners
Displacement (t)	5,6
Ballast (tonnes)	cast iron 2,4
CE norm	NA
Hull material	GRP
Hull colour	white
Hull shape	round-bilged
Keel type	fin keel
Superstructure material	GRP
Rubbing strake	plastic
Deck material	GRP
Deck finish	non-skid paint
Superstructure deck finish	non-skid moulded in
Cockpit deck finish	teak (needs to be replaced)
Antifouling (year)	2020
Dorades	2 x
Window frame	aluminium
Window material	perspex
Deckhatch	yes



Fuel tank (litre)	stainless steel 150
Level indicator (fuel tank)	yes
Freshwater tank (litre)	polyethylene 240
Level indicator (freshwater)	yes
Blackwater tank (litre)	stainless steel
Blackwater tank extraction	deck extraction + uw line
Wheel steering	mechanical
Emergency tiller	yes
Extra info	Underwaterbody stripped, new primer and antifouling 2018

ACCOMMODATION

Cabins	2
Berths	6
Interior	mahogany
Floor	carpet
Saloon	Upholstery new 2012
Headroom saloon (m)	1,90
Heating	diesel ducted hot air Eberspacher D3L (not working)
Navigation center	yes
Chart table	yes
Aft Cabin	yes
Dinette	yes
Galley	yes
Countertop	plastic
Sink	stainless steel
Cooker	calor gas Techimpex XL3 burner (2018)
Oven	yes
Gas alarm	Ferropilot
Fridge	With freezer compartment (Coolmatic)
Hot water system	220V + engine Boiler element new 2016
Water pressure system	electrical Jabsco (2018)



Owners cabin	v-bed
Bed length (m)	2,30 x 1,30
Wardrobe	hanging and shelves
Bathroom	shared
Toilet	shared Jabsco (2010)
Toilet system	manual
Wash basin	in the cabin
Shower	shared
Guest cabin 1	double bed
Bed length (m)	2,05 x 1,50 (with slatted base)
Wardrobe	hanging and shelves

MACHINERY

No of engines	1
Make	Yanmar
Type	3 GM 30F
HP	27
kW	19,85
Fuel	diesel
Year installed	1992
Maximum speed (kn)	7
Cruising speed (kn)	5
Consumption (l/hr)	3
Engine hours	1330
Engine cooling system	freshwater heat exchanger
Drive	shaft
Engine controls	bowden cable
Gearbox	mechanical
Propeller type	feathering Prowell
Propeller blades	3 x
Propeller shaft material	stainless steel



Shaft lubrication	water New 2017
Manual bilge pump	yes
Electrical installation	12V / 220V
Start battery	(2017)
Service battery	2x 180 Ah gel (2006)
Battery monitor	yes
Battery charger	Victron with bluetooth (2019)
Shorepower	with cable
Extra info	Through hull fittings and seacocks new 2015

NAVIGATION

Compass	Silva 1000
Depth sounder	Autohelm
Log	Autohelm
Windset	Autohelm
Repeater	Autohelm (not in use)
VHF	Shipmate RS 8300 (not working)
VHF handheld	Icom IC-M35
Autopilot	Raymarine (2017)
Navtex	Clipper
AIS receiver	With WIFI (2014)
Navigation lights	yes

EQUIPMENT

Sprayhood	Allround (2014)
Cockpit table	yes
Bathing platform	yes
Boarding ladder	stainless steel
Deck shower	Whale (2018) in cockpit
Anchor	Bruce
Anchor chain	yes



Anchor 2	CQR Plough
Windlass	manual Muir (electric not in use)
Windlass aft	manual
Dinghy	inflatable
Outboard	2,5 pk Mariner
Outboard support	yes
Sea railing	stainless steel
Pushpit	yes
Pulpit	yes
Life raft	valise (or bag) Seago (needs survey)
Life raft (pers)	4
Fenders	yes
Mooring lines	yes
Radio-cd player	Pioneer
Speakers in salon	yes
Clock - barometer	yes
Fire extinguisher	2 x

RIGGING

Rigging	fractional
Standing rigging	wire New 2016
Brand mast	Dehler
Material mast	aluminium
Mainsail cover	Maindrop system (2016) with lazy jacks
Fully battened mainsail	Ullman sails (2016)
High aspect	Ullman sails (2016)
Genoa furler	Harken (2015)
Gennaker	Quantum sails (2002) with squeezer
Self tacking jib installation	To use with reefed high aspect
Reefing System	quick-one-line-reefing
Backstay adjuster	tackle



Boomvang	gasspring
Genoa sheetwinches	2x Harken 32 st
Halyard winches	1x Harken 44 st electric (overhauled in 2015)
Winchcovers	2x
Spi-pole	aluminium 2 x
Extra info	Boom fitting new 2017
Extra info	Main sheet rails new 2014



DEHLER 36 CWS



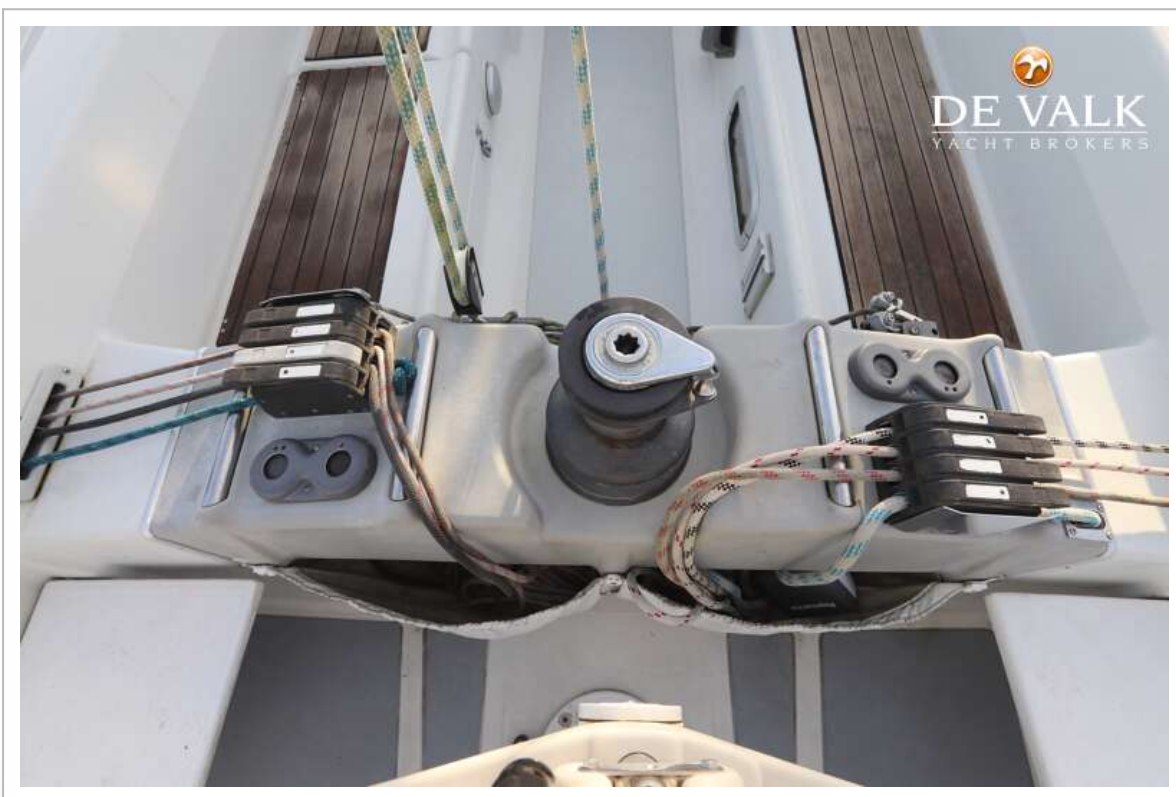
DEHLER 36 CWS



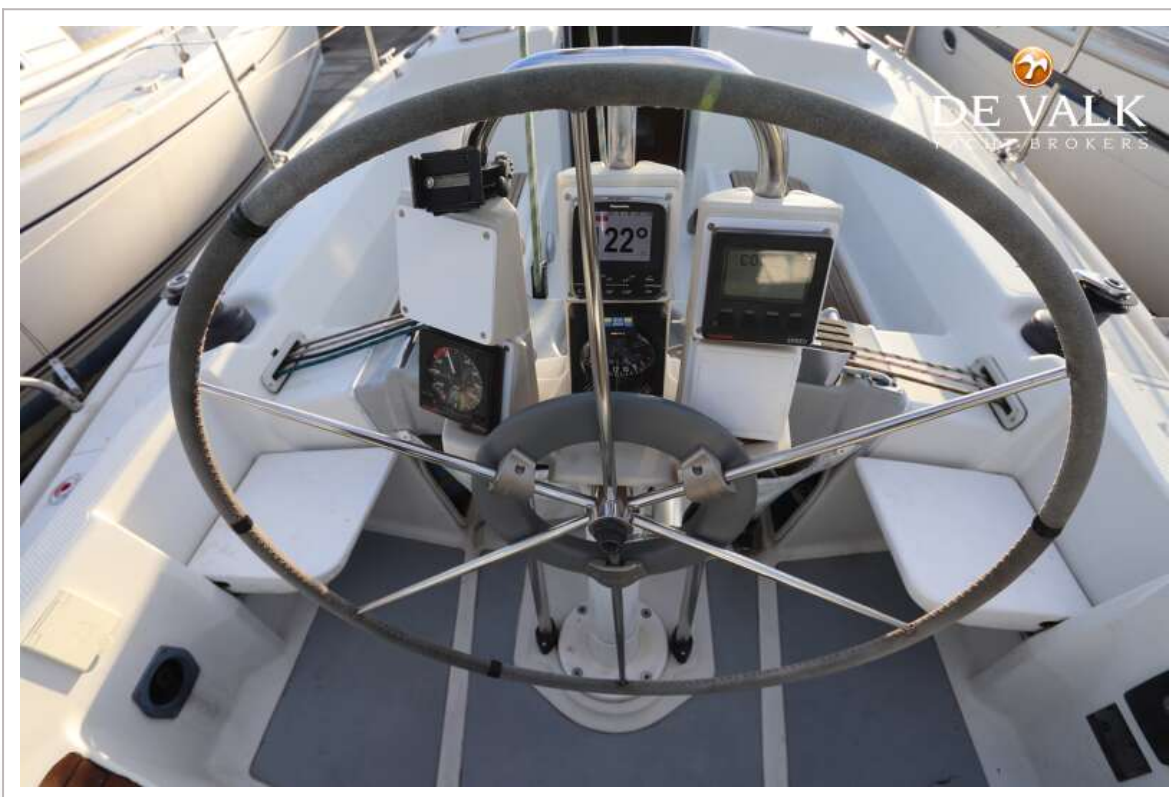
DEHLER 36 CWS



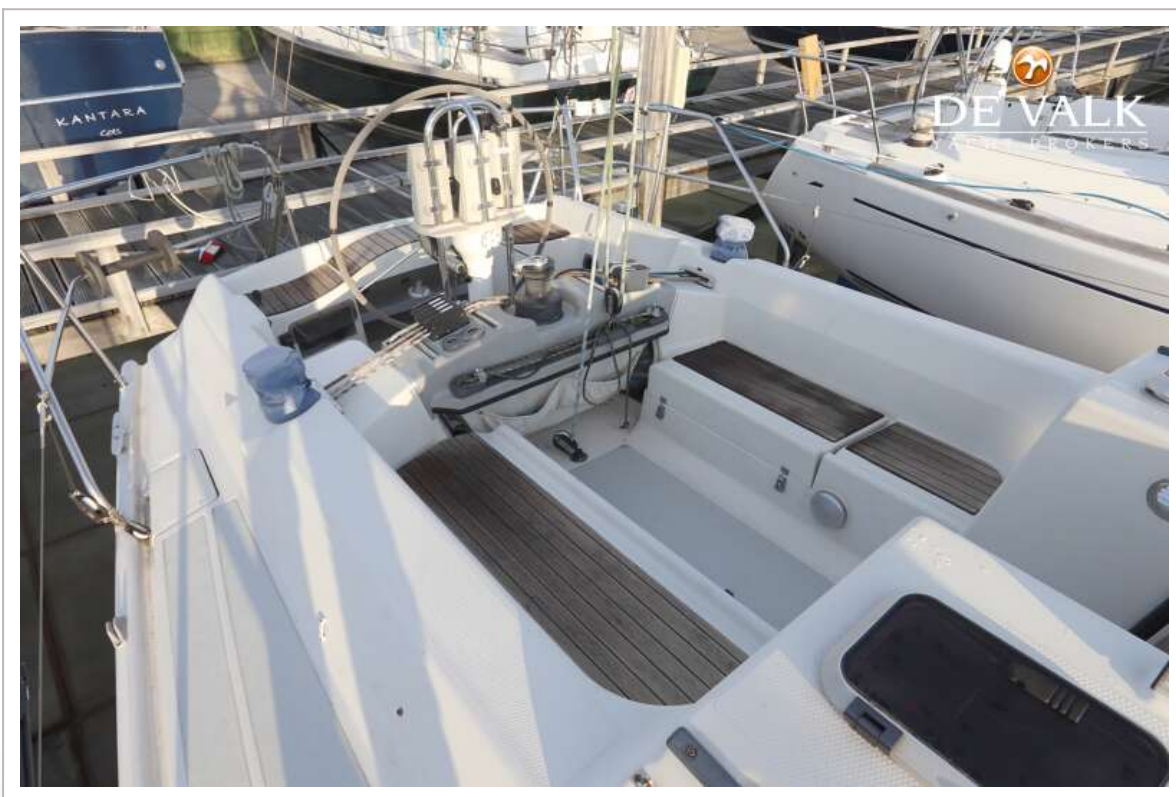
DEHLER 36 CWS



DEHLER 36 CWS



DEHLER 36 CWS



DEHLER 36 CWS



DEHLER 36 CWS



DEHLER 36 CWS



DEHLER 36 CWS



DEHLER 36 CWS



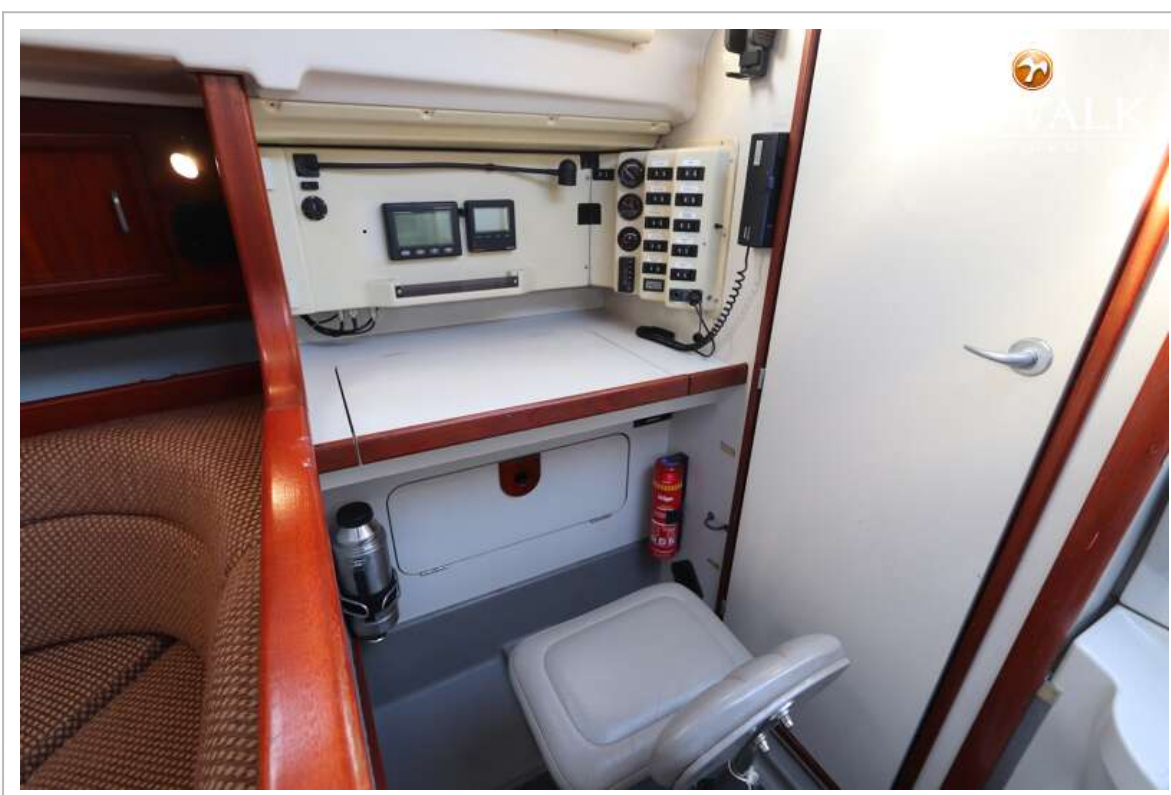
DEHLER 36 CWS



DEHLER 36 CWS



DEHLER 36 CWS



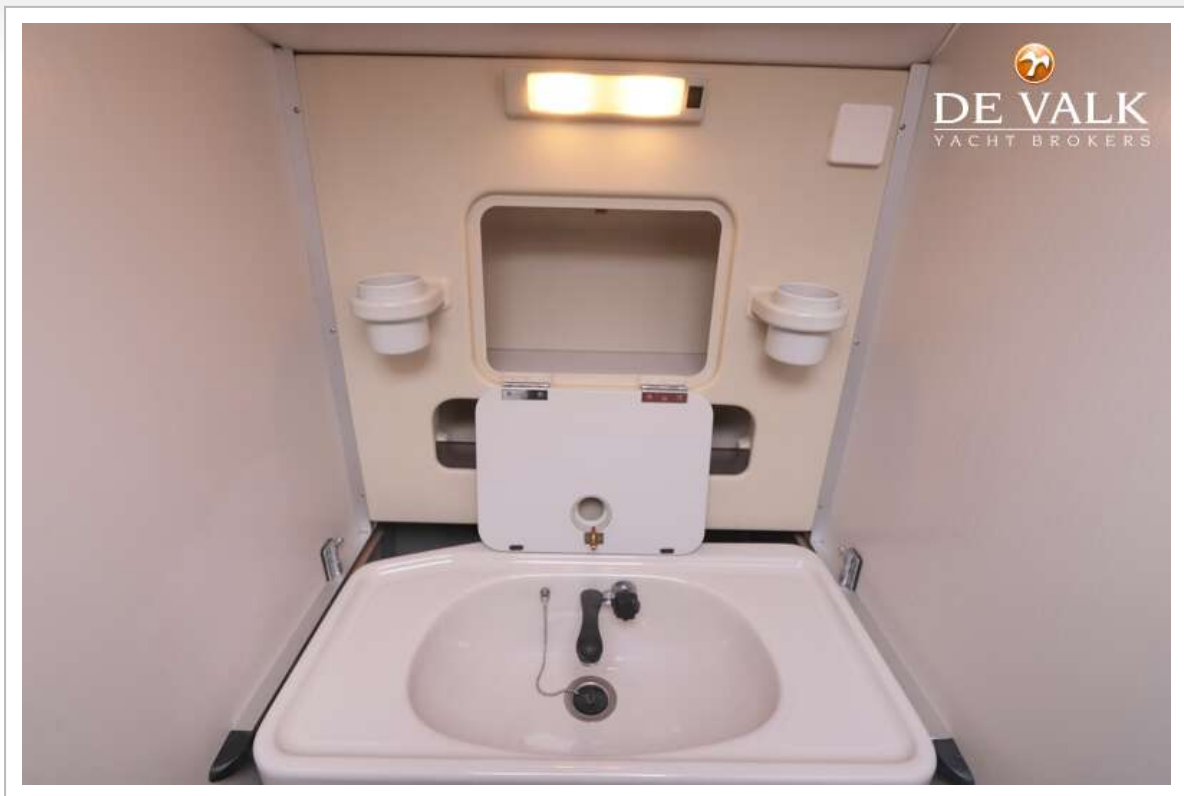
DEHLER 36 CWS



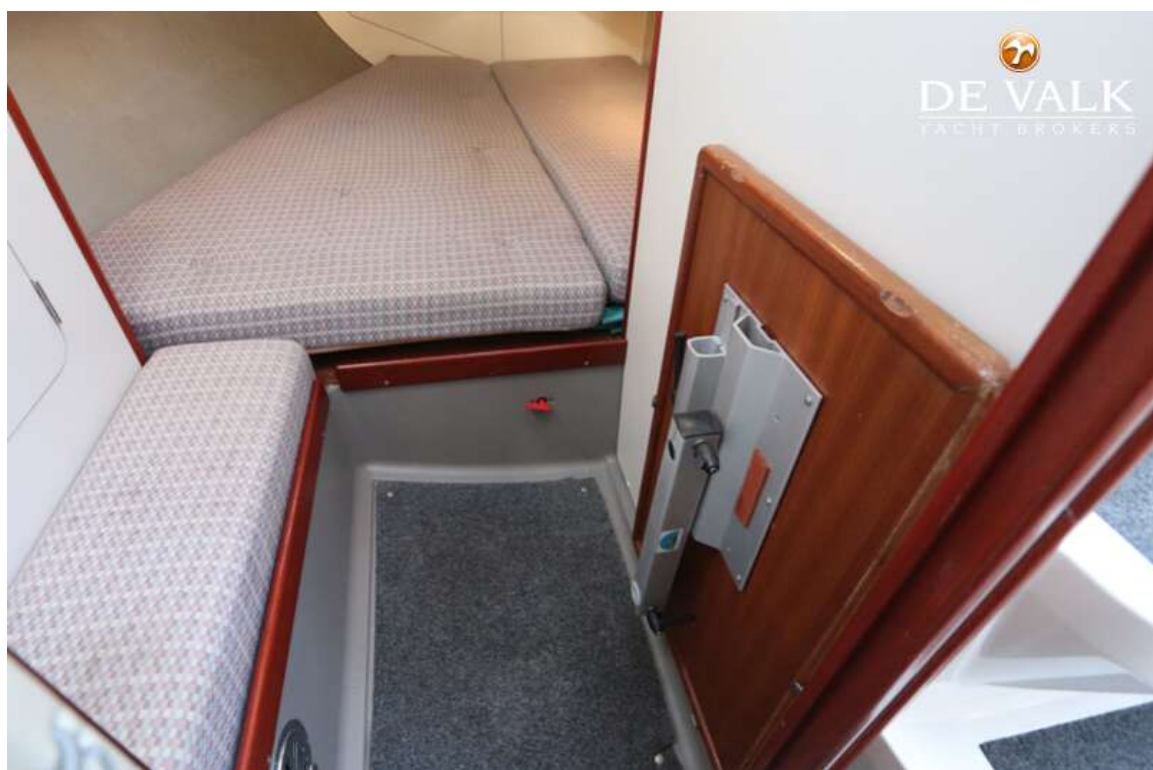
DEHLER 36 CWS



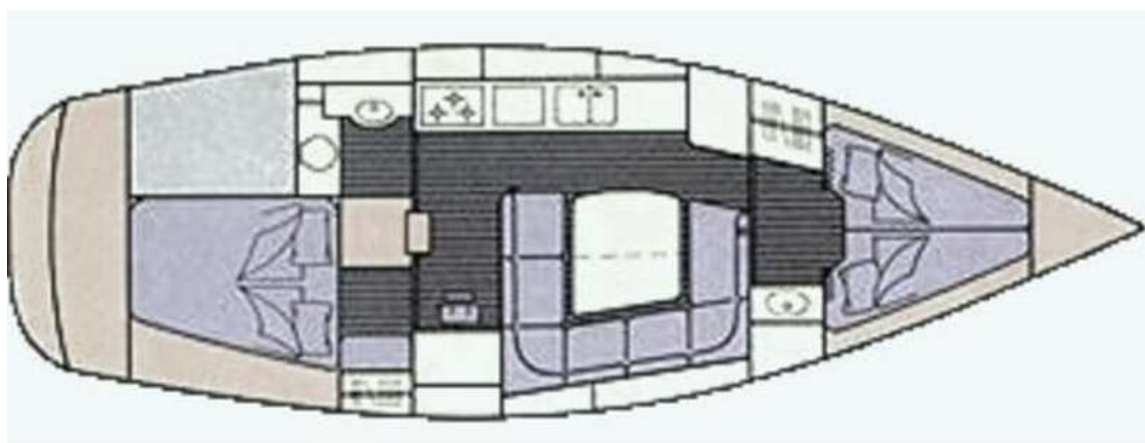
DEHLER 36 CWS



DEHLER 36 CWS



DEHLER 36 CWS



DEHLER 36 CWS

