



DE VALK
YACHT BROKERS



MULDER FUTURA 56



DE VALK
YACHT BROKERS

MULDER FUTURA 56

BROKER'S COMMENTS

"Mulder Futura 56, built in 1993 by Mulder Shipyards in Voorschoten - The Netherlands. Spacious yacht which is very suitable for living on board, 3 large cabins, 5 berths and 2 separate bathrooms. Equipped with Kabola central heating, isolated glass and 14 kVa generator."

SPECIFICATIONS

Dimensions	17,50 x 4,65 x 1,30 (m)	Builder	Mulder - Voorschoten
Built	1993	Cabins	3
Material	Steel	Berths	5
Engine(s)	2 x Volvo Penta TAMD 71B diesel	Hp/Kw	2 x 380 (hp), 279,3 (kw)
	SOLD	Lying	at sales office

CONTACT

Sales office	De Valk Loosdrecht	Telephone	+31 35 582 90 30
Address	't Breukeleveense Meentje 6	Fax	+31 (0)35 582 90 39
	1231 LM Loosdrecht / Wijdmeren	E-mail	loosdrecht@devalk.nl
	The Netherlands		

DISCLAIMER

These particulars are given in good faith as supplied but cannot be guaranteed and cannot be used for contracts.



GENERAL

Model	MULDER FUTURA 56
Type	motor yacht motor yacht
LOA (m)	17,50
LWL (m)	0,00
Beam (m)	4,65
Draft (m)	1,30
Air draft (m)	3,47
Headroom (m)	1,95
Year built	1993
Builder	Mulder - Voorschoten
Country	The Netherlands
Designer	A. Volker
Displacement (t)	38
Hull material	steel
Hull colour	White
Hull shape	Hard chine
Superstructure material	Steel
Rubbing strake	Stainless steel
Deck material	Steel
Deck finish	Teak
Cockpit deck finish	Teak
Window frame	Aluminum
Window material	Double glazing Gebo Stalite
Portholes	Stainless steel
Radar arch	Collapsible
Fuel tank (litre)	3.000
Level indicator (fuel tank)	yes
Freshwater tank (litre)	Stainless Steel 1.500
Level indicator (freshwater)	yes
Wheel steering	Hydraulic



ACCOMMODATION

Cabins	3
Berths	5
Interior	Oak
Layout	yes
Floor	teak
Pilot house	yes
Saloon	Spacious and light
Headroom saloon (m)	1,95
Heating	Central heating Kabola diesel
Aft Cabin	yes
Dinette	L-shaped
Dinette to convert into berth	yes
Galley	yes
Countertop	yes
Sink	Porcelain 2x
Cooker	Electric Siemens
Extractor	yes
Microwave	Whirlpool
Fridge	with freezer compartment 1x Electrolux, 1x Siemens
Freezer	Liebherr
Hot water system	on central heating
Water pressure system	Electrical
Dishwasher	Miele
Coffee maker	yes
Owners cabin	French bed
Bathroom	en suite
Toilet	Shared
Toilet system	Electric



Wash basin	in the bathroom 2x
Shower	En suite
Bath tub	En suite
Guest cabin 1	French bed
Bathroom	En suite
Toilet	En suite
Toilet system	Electric
Wash basin	in the bathroom
Shower	Shared
Guest cabin 2	Single bed
Washing machine	Miele Softcare
Dryer	Miele Softcare

MACHINERY

No of engines	2
Make	Volvo Penta
Type	TAMD 71B
HP	380,00
kW	279,30
Fuel	diesel
Year installed	1993
Maximum speed (kn)	13
Cruising speed (kn)	9.00
Consumption (l/hr)	28,00
Range (nm)	0
Engine hours	BB: 5176 / SB: 4666
Engine cooling system	Freshwater heat exchanger
Drive	shaft
Engine controls	Mechanical Volvo Penta
Gearbox	Hydraulic Twin Disc
Bowthruster	Hydraulic



Exhaust	Watercooled
Propeller type	Fixed
Propeller blades	4
Propeller shaft material	Stainless steel
Shaft lubrication	Grease
Electric bilge pump	yes
Electrical installation	24V/230V
Generator	wet exhaust Vetus 14 kVa
Running hours generator	2286
Start battery	2x 12V/150Ah
Service battery	4x 12V/225Ah
Generator battery	1x 12V/88Ah
Battery monitor	yes
Battery charger	Victron Skylla 24V/50A
Inverter	Victron Atlas 24V/4500W
Shorepower	yes
Watermaker	Life Flo

NAVIGATION

Compass	Rigel
Depth sounder	VDO Logic
Log	VDO Logic
Windset	yes
VHF	Navman VHF7100
VHF handheld	yes
Autopilot	with wired controls Autohelm ST7000
Rudder angle indicator	yes
Radar	Furuno
GPS	Autohelm + Seiwa Barramundi
Plotter	Seiwa Barramundi



Loudhailer	yes
Extra info	Raymarine fishfinder

EQUIPMENT

Bathing platform	yes
Boarding ladder	yes
Transom door	yes
Gangway	Hydraulic
Deck shower	Whale
Anchor	yes
Anchor chain	yes
Windlass	Electrical Anchor Mate
Dinghy	yes
Outboard	Mercury 25hp
Davits	Stainless steel
Davits controls	Manual
Sea railing	Stainless steel
Grab rail (superstructure)	Stainless steel
Wiper	double arm 3x
Horn	yes
TV	Samsung LCD + Philips DVD
TV receiver	Trac Vision 4
Radio-cd player	Samsung
Cockpit speakers	Sony
Clock - barometer	yes



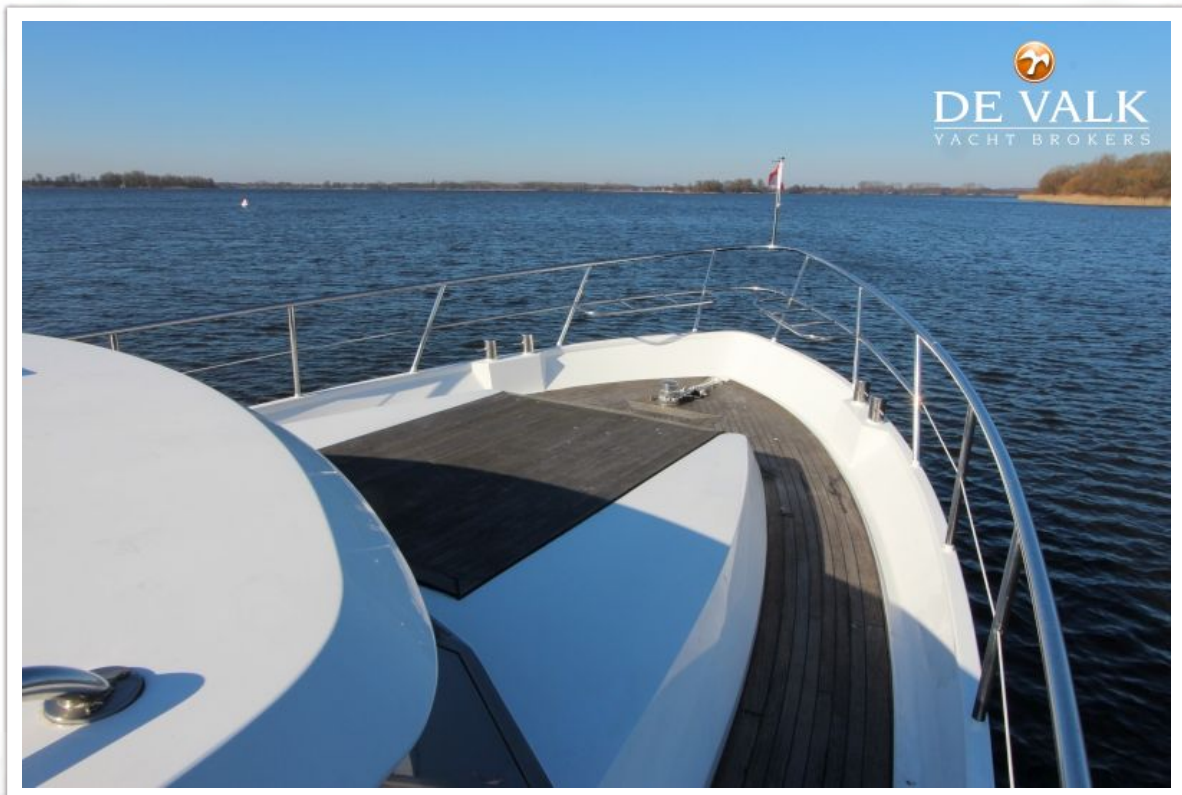
MULDER FUTURA 56



MULDER FUTURA 56



MULDER FUTURA 56



MULDER FUTURA 56



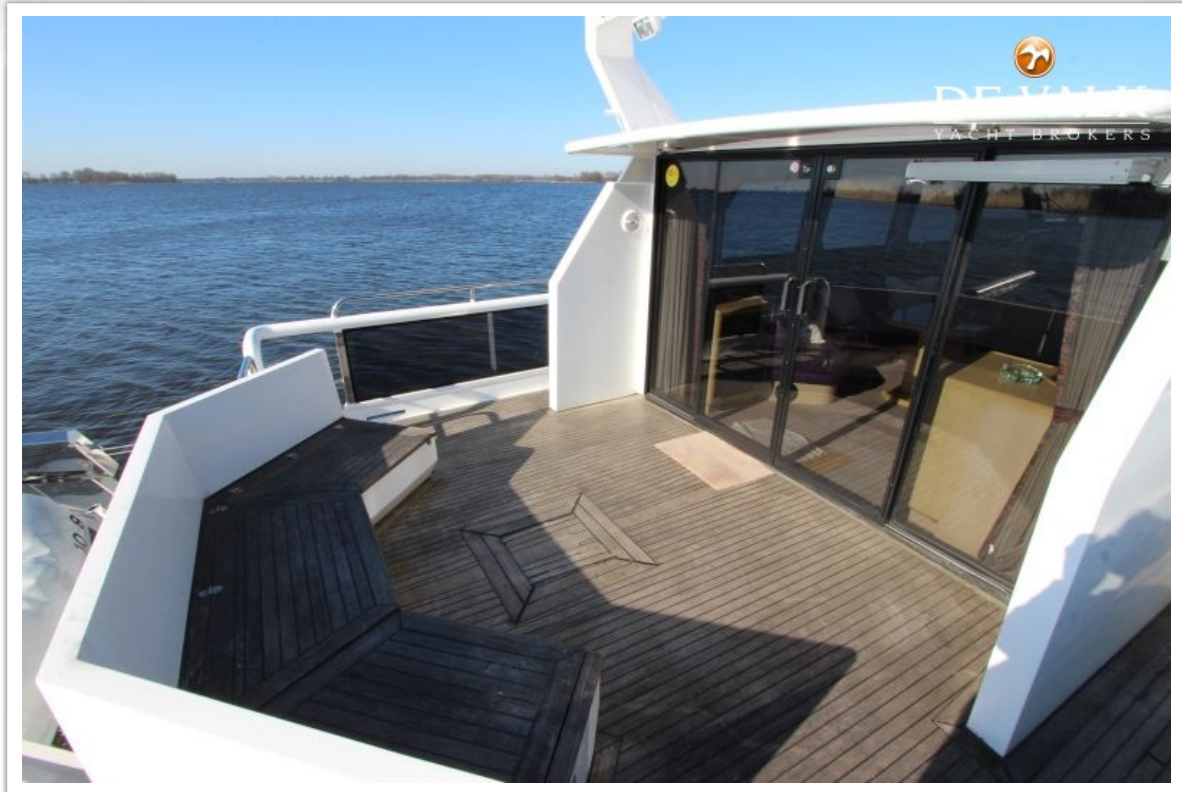
MULDER FUTURA 56



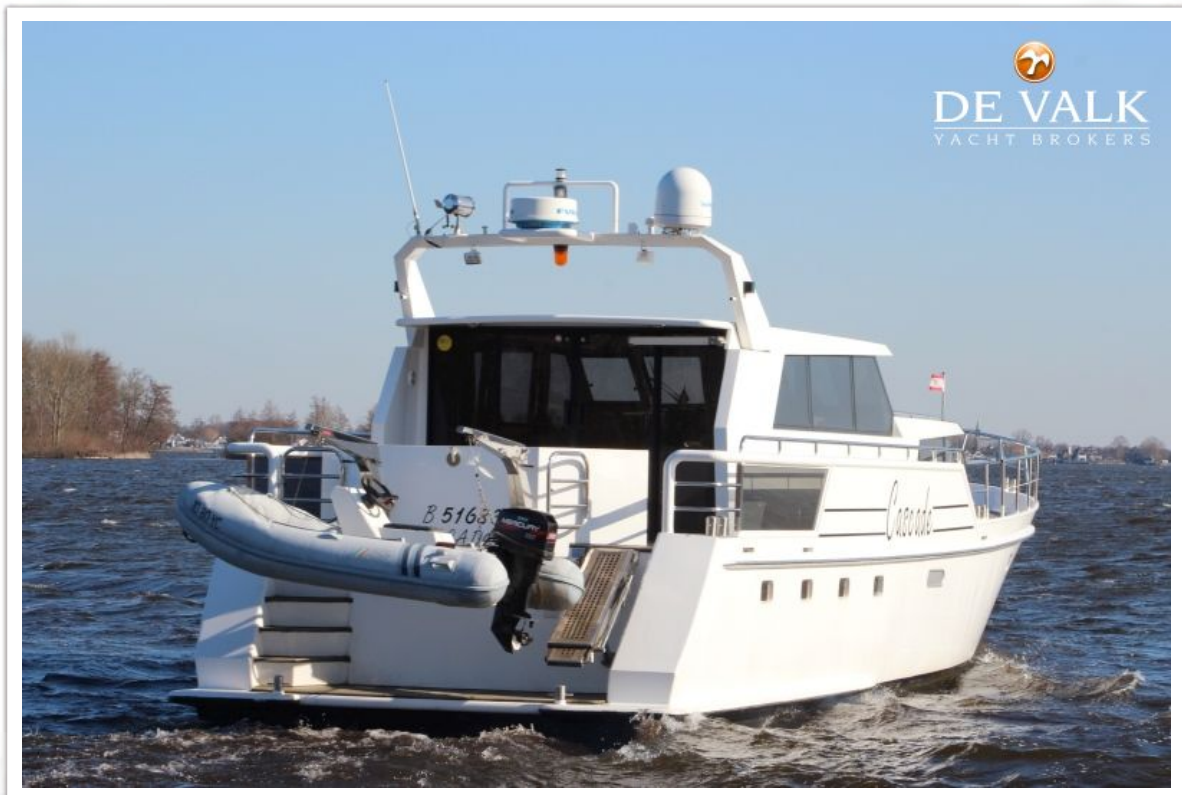
MULDER FUTURA 56



MULDER FUTURA 56



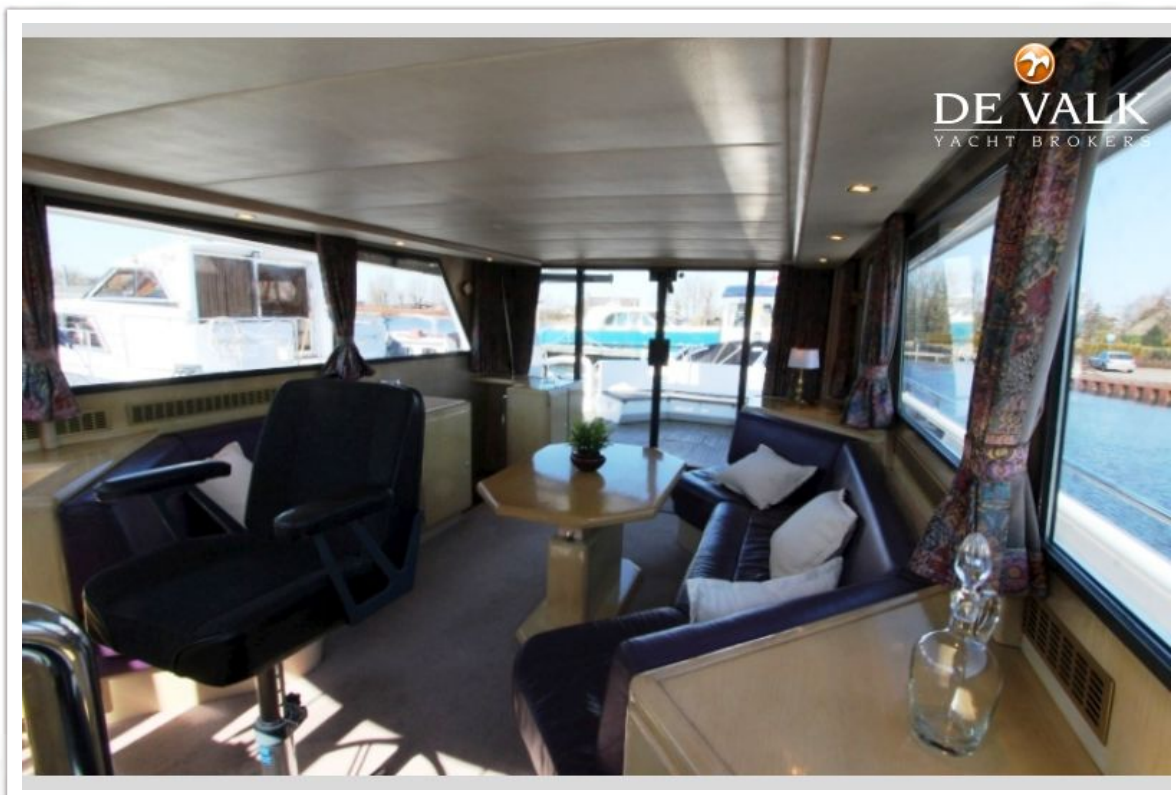
MULDER FUTURA 56



MULDER FUTURA 56



MULDER FUTURA 56



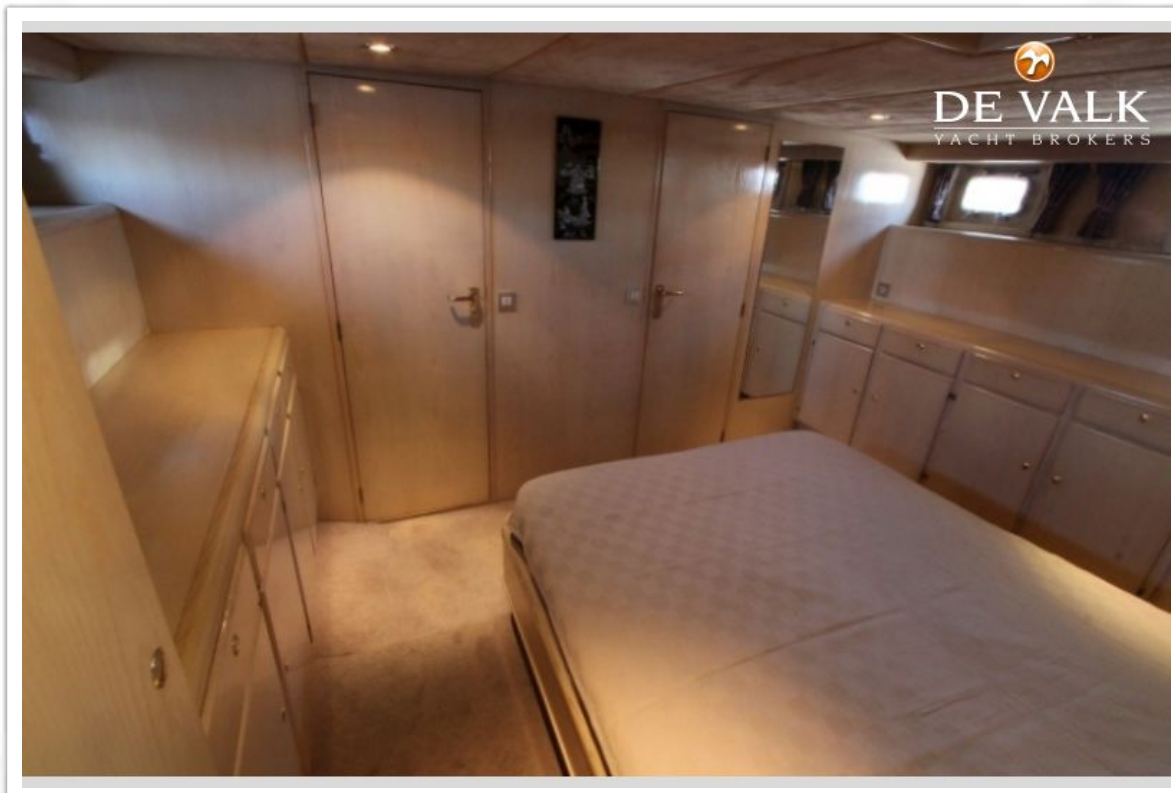
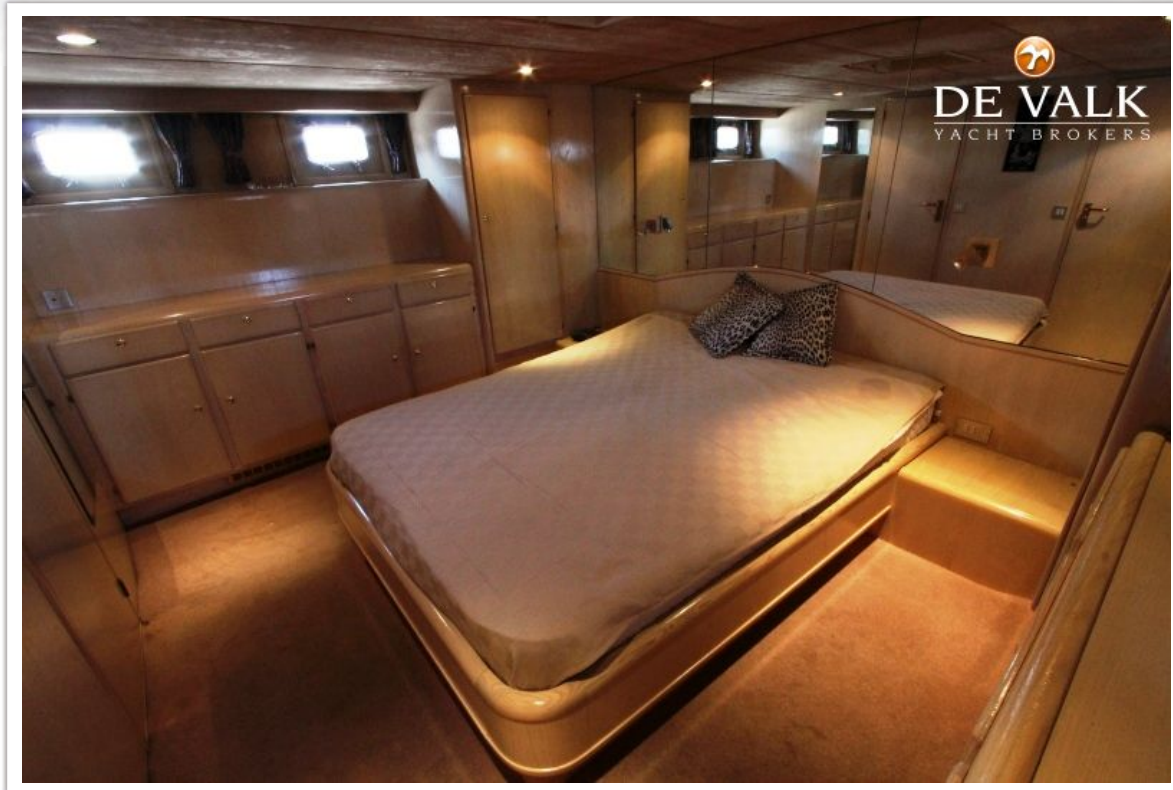
MULDER FUTURA 56



MULDER FUTURA 56



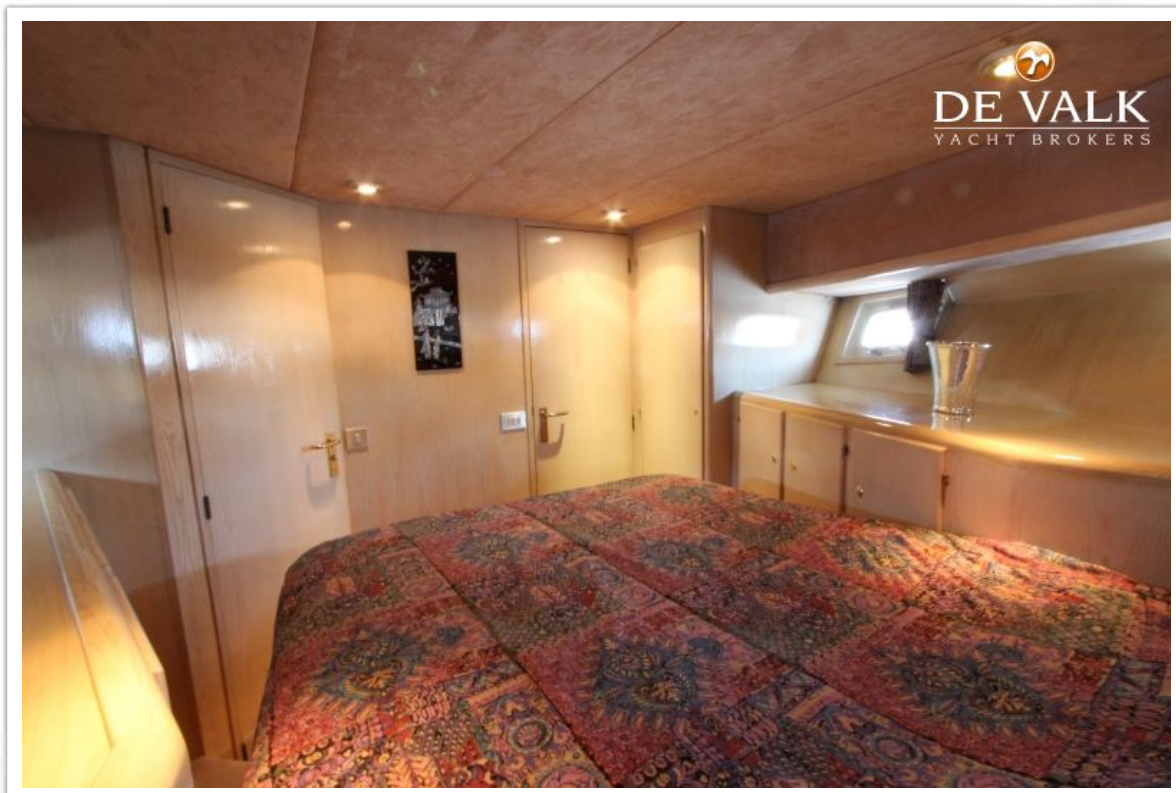
MULDER FUTURA 56



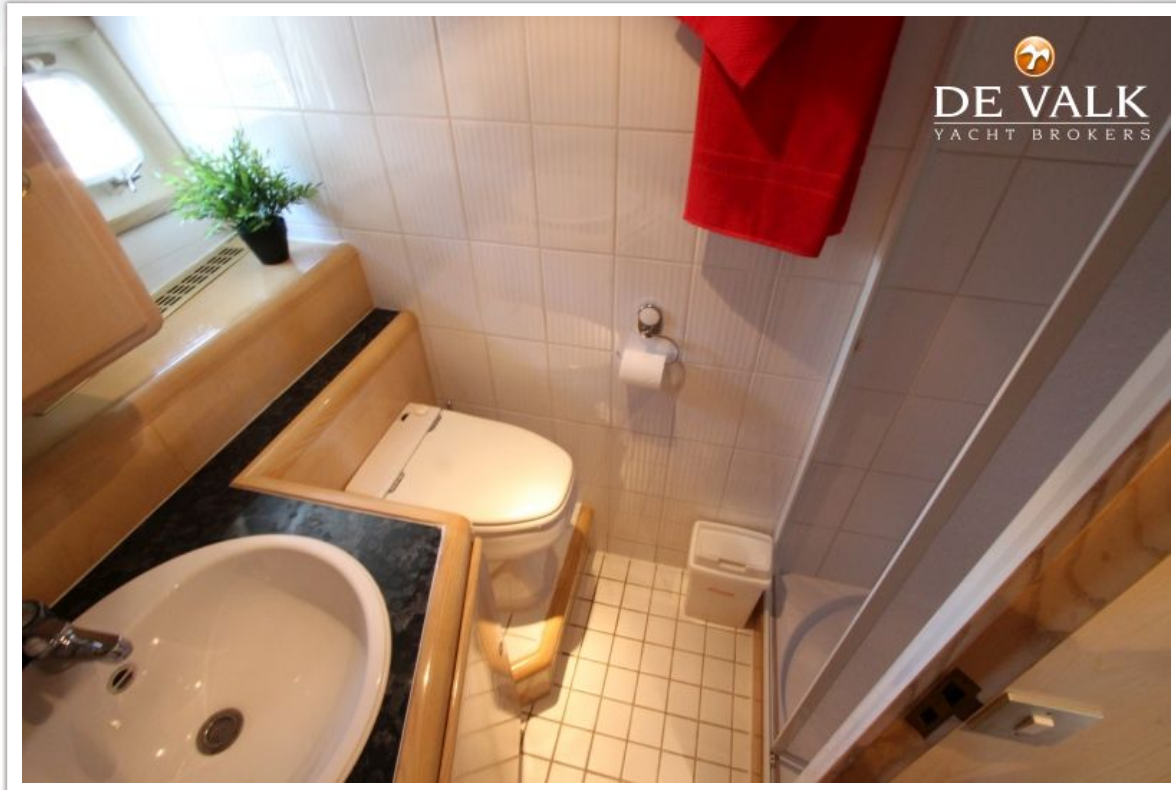
MULDER FUTURA 56



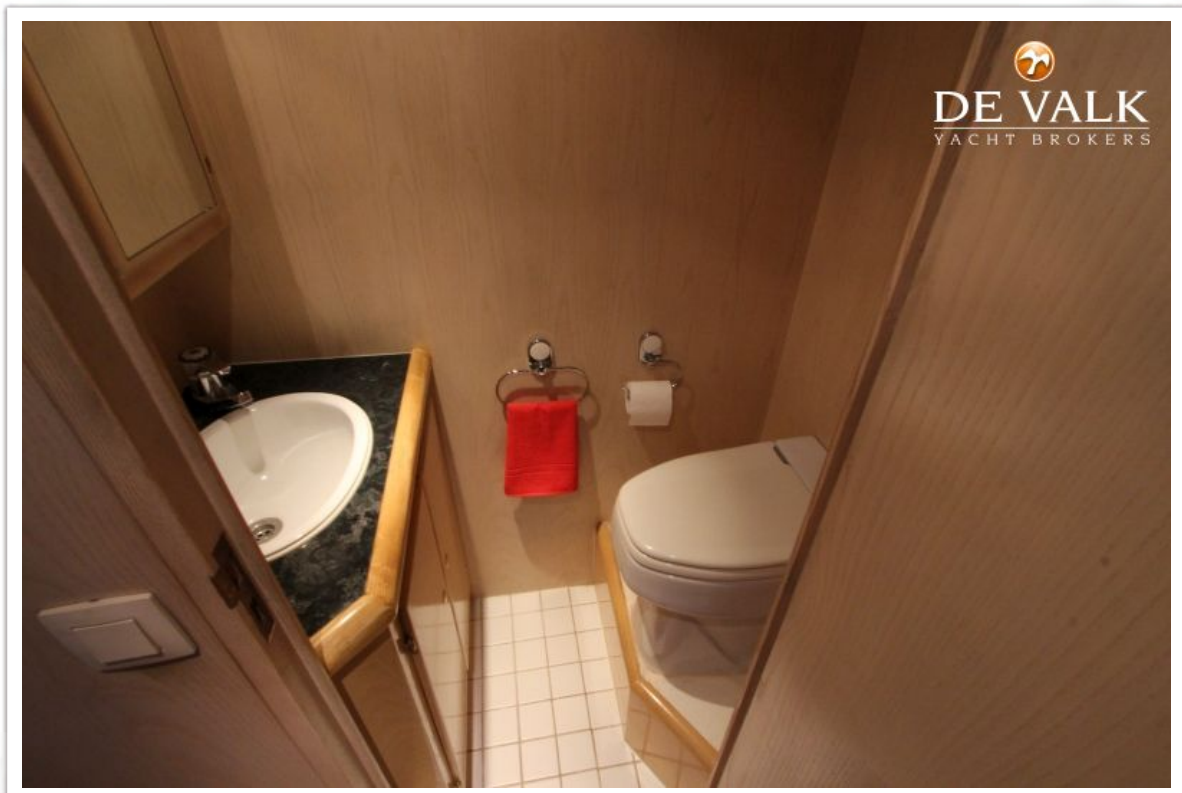
MULDER FUTURA 56



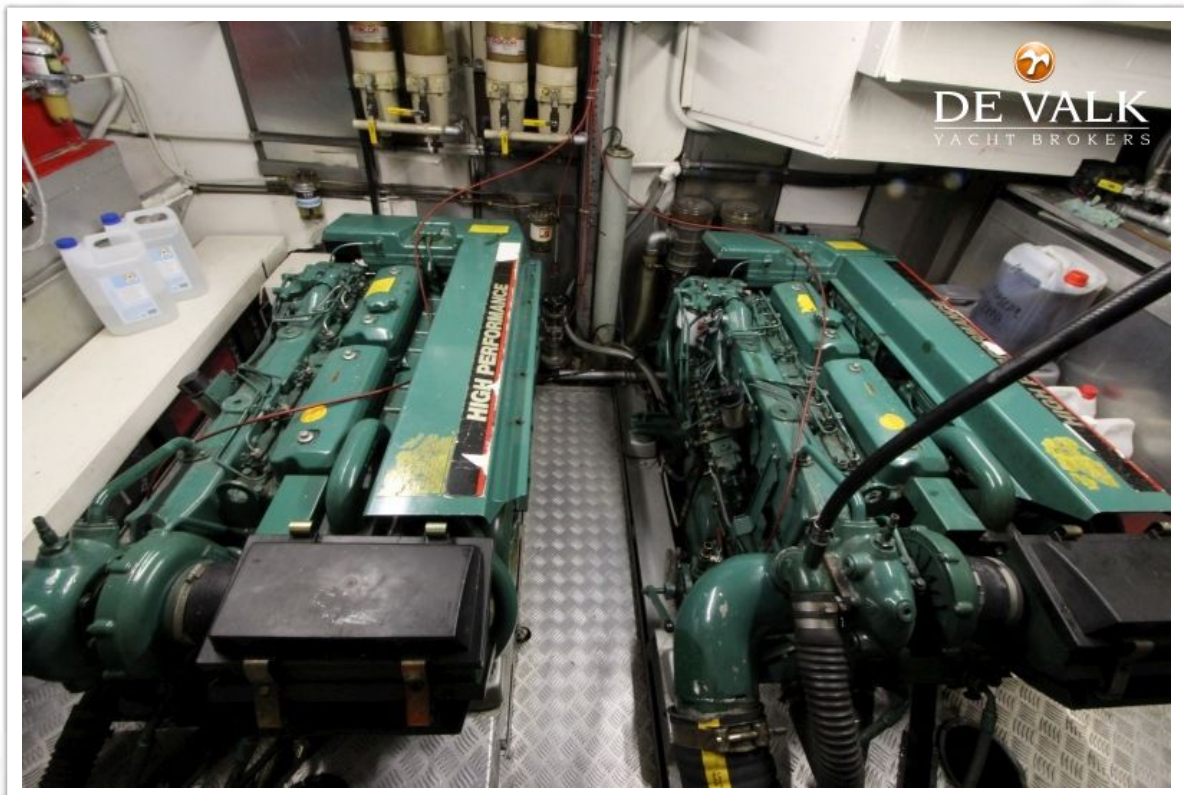
MULDER FUTURA 56



MULDER FUTURA 56



MULDER FUTURA 56



MULDER FUTURA 56



