



CATFISH 1500

# CATFISH 1500

## BROKER'S COMMENTS

Spacious and well maintained Catfish 1500. Perfectly equipped to life on the boat, Great owners cabin, lounge with good view on the water and a guest bathroom.

*Jeanne Stukstette*

## SPECIFICATIONS

<b>Dimensions</b>	14.95 x 4.55 x 1.25 (m)	<b>Builder</b>	Jachtbouw Peter Linskens B.V.
<b>Built</b>	2003	<b>Cabins</b>	1
<b>Material</b>	Steel	<b>Berths</b>	2
<b>Engine(s)</b>	1 x Vetus Deutz DT67 diesel	<b>Hp/Kw</b>	231.00 (hp), 169.79 (kw)
<b>Asking price</b>	sold (VAT )	<b>Lying</b>	at sales office

## CONTACT

<b>Sales office</b>	De Valk Limburg	<b>Telephone</b>	+31 630372559
<b>Address</b>	Schippersveld 3 6019 DE Wessem NL	<b>E-mail</b>	limburg@devalk.nl

## DISCLAIMER

These particulars are given in good faith as supplied but cannot be guaranteed.



## GENERAL

Model	CATFISH 1500
Type	motor yacht
LOA (m)	14,95
Beam (m)	4,55
Draft (m)	1,25
Headroom (m)	2,00
Year built	2003
Builder	Jachtbouw Peter Linskens B.V.
Country	The Netherlands
Designer	Vripack
Displacement (t)	23
Hull material	steel
Hull colour	white
Hull shape	hard chine
Superstructure material	steel
Rubbing strake	stainless steel
Deck material	steel
Deck finish	non-skid paint
Antifouling (year)	2020
Window frame	aluminium
Window material	tempered glass
Deckhatch	2
Fuel tank (litre)	steel 1250
Freshwater tank (litre)	yes
Wheel steering	hydraulic

## ACCOMMODATION

Cabins	1
Berths	2
Interior	teak



# CATFISH 1500

Floor	teak and holly
Deck saloon	yes
Headroom saloon (m)	1.95
Heating	central hot water Kabola B12-Tap
Dinette	yes
Countertop	granite
Sink	stainless steel
Oven	Siemens
Fridge	NEFF
Hot water system	220V + engine
Water pressure system	electrical Jabsco/feit Am9921
Owners cabin	double bed
Bed length (m)	1.95
Wardrobe	hanging/drawers/shelves
Bathroom	separate
Toilet	separate
Toilet system	electric Dometic
Wash basin	in the bathroom
Shower	separate
Toilet	separate Dometic
Toilet system	electric Dometic
Wash basin	in the bathroom
Washing machine	AEG Lavamat W1230
Dryer	AEG Lavatherm 57320-W

## MACHINERY

No of engines	1
Make	Vetus Deutz
Type	DT67
HP	231
kW	169.79



Fuel	diesel
Engine hours	741
Engine controls	yes
Gearbox	mechanical
Bowthruster	electric
Sternthruster	electric
Generator	VETUS
Batteries	4 (2019)
Start battery	2
Battery monitor	PHILIPPI
Battery charger/inverter	VICTRON 3000va 70amp
Shorepower	with cable

## NAVIGATION

Compass	RAYMARINE
Depth sounder	RAYMARINE
VHF	RAYMARINE
Radar	RAYMARINE
Plotter	RAYMARINE E120W HYBRID TOUCH
Camera	yes
Navigation lights	yes
Searchlight	yes

## EQUIPMENT

Fixed windscreen	yes
Cockpit cover	yes
Bimini	yes
Cockpit cushions	yes
Cockpit table	yes
Cockpit chairs	yes
Bathing platform	yes



# CATFISH 1500

Anchor	yes
Horn	yes
Fenders	yes
Mooring lines	yes
TV	yes
TV receiver	yes
Radio	yes
Speakers in salon	yes
Extinguisher in engine room	yes

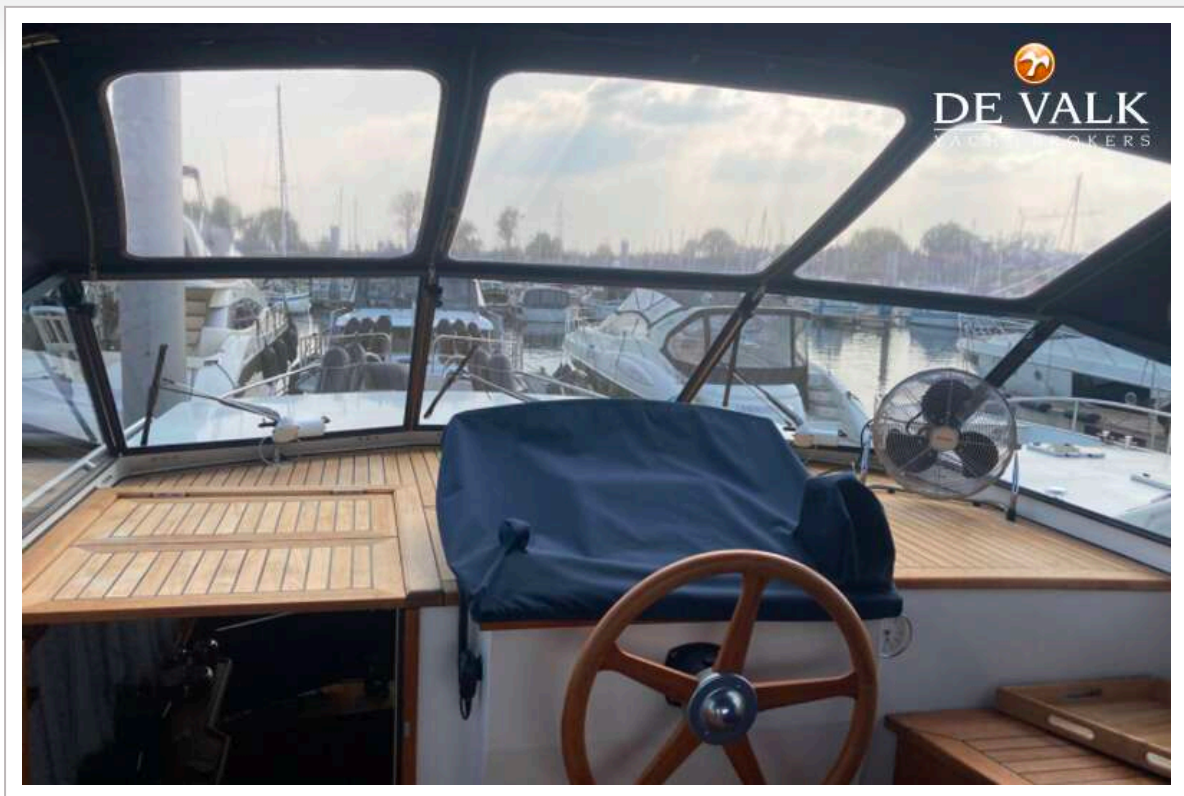


# CATFISH 1500





# CATFISH 1500

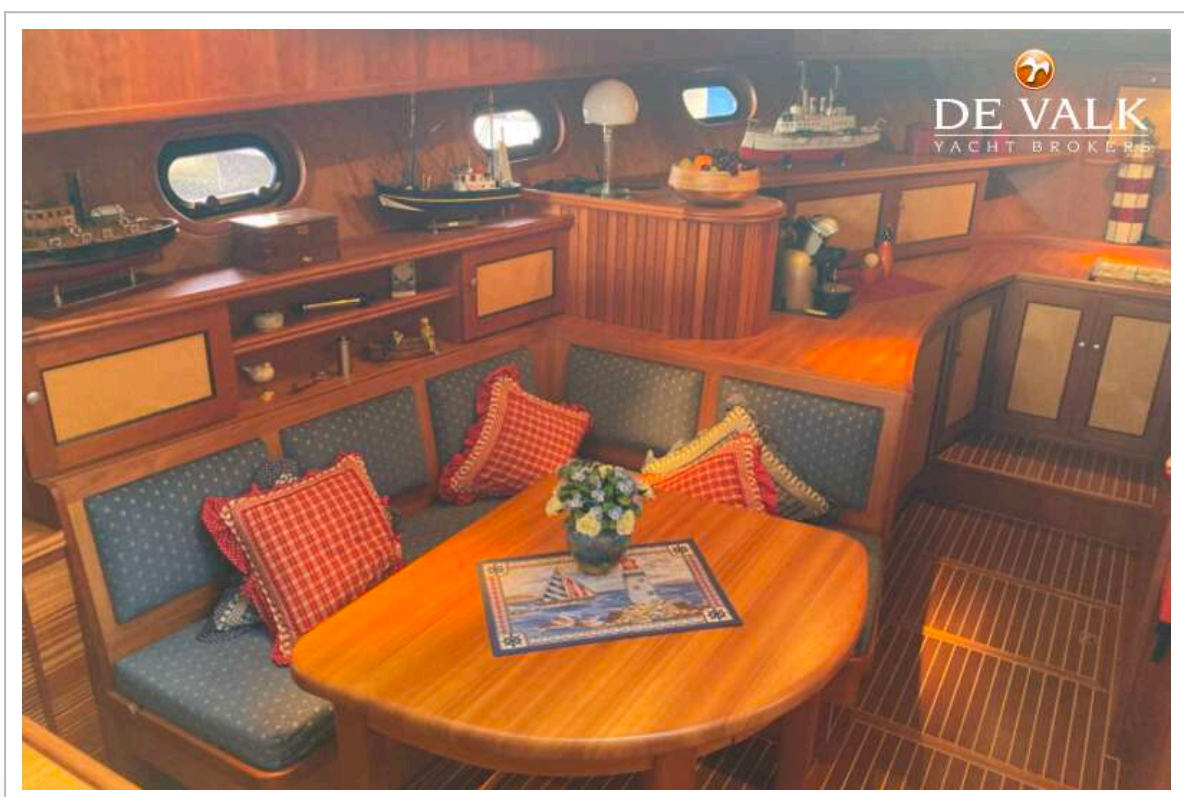
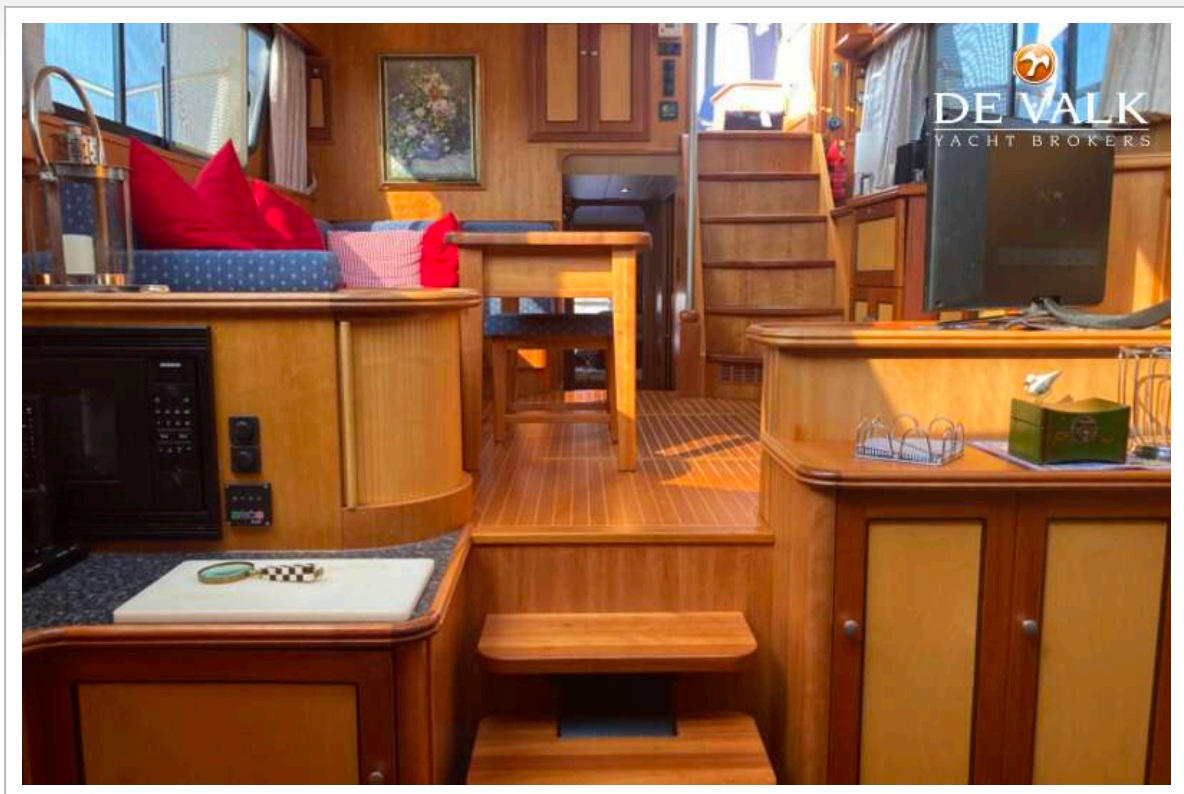




# CATFISH 1500

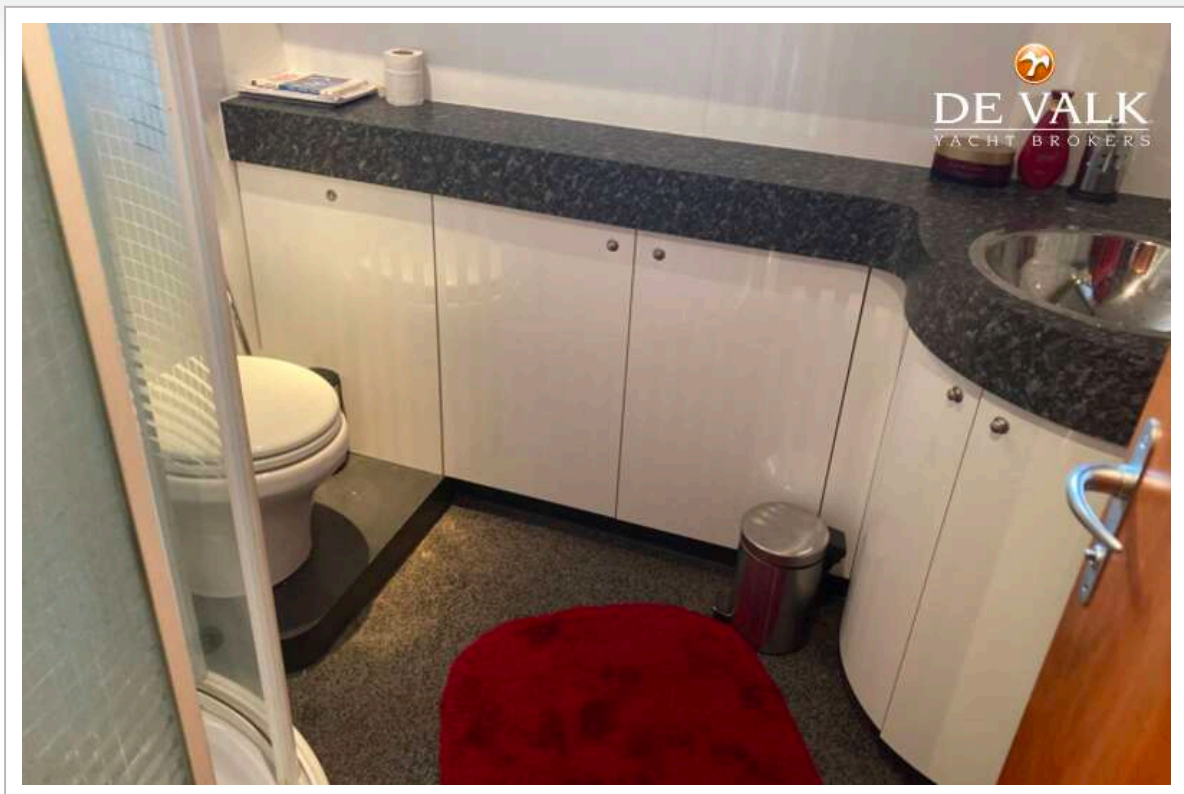


# CATFISH 1500

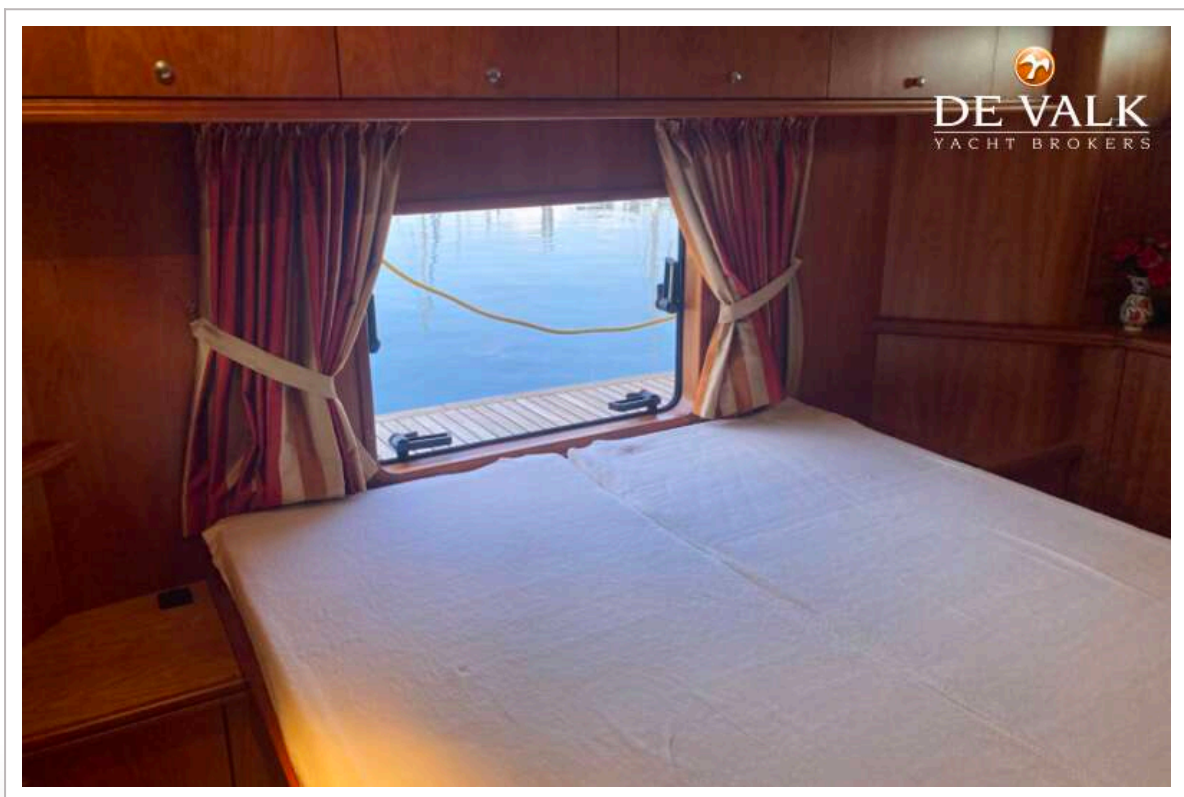




# CATFISH 1500



# CATFISH 1500





# CATFISH 1500





# CATFISH 1500





# CATFISH 1500

