



## EXPLORER MOTOR YACHT

# EXPLORER MOTOR YACHT

## BROKER'S COMMENTS

Former Dutch fishing cutter built for a well-known Urk fishing family. In 2003 the current owner rebuilt the ship, completely professionally, into a comfortable seagoing motor yacht that is also very well equipped for living aboard. Deck and superstructure have been completely renewed. The ship is equipped with 3 separate cabins, a cozy wheelhouse, galley, and a beautiful engine room she is ready to go on beautiful trips with her new owner. Vessel has a valid CBB certificate

*Pieter Bosma*

## SPECIFICATIONS

<b>Dimensions</b>	21.18 x 5.41 x 1.92 (m)	<b>Builder</b>	N.V. Scheepswerf de Hoop
<b>Built</b>	1959	<b>Cabins</b>	3
<b>Material</b>	Steel	<b>Berths</b>	6
<b>Engine(s)</b>	1 x Mitsubishi 6 SN MPTK diesel	<b>Hp/Kw</b>	420.00 (hp), 309.12 (kw)
<b>Asking price</b>	€ 675.000 (VAT Paid)	<b>Lying</b>	contact Sneek

## CONTACT

<b>Sales office</b>	De Valk Sneek	<b>Telephone</b>	+31 (0)515 42 80 30
<b>Address</b>	Zwolsmanweg 7 8606 KC Sneek NL	<b>E-mail</b>	sneek@devalk.nl

## DISCLAIMER

These particulars are given in good faith as supplied but cannot be guaranteed.



# EXPLORER MOTOR YACHT

## GENERAL

Model	EXPLORER MOTOR YACHT
Type	motor yacht
LOA (m)	21,18
LWL (m)	18,80
Beam (m)	5,41
Draft (m)	1,92
Air draft (m)	12,45
Headroom (m)	2,00
Year built	1959
Launched	rebuild and conversion to yacht in 2003
Builder	N.V. Scheepswerf de Hoop
Country	The Netherlands
Designer	N.V. Holland Launch Zaandam 1 out of 7
Displacement (t)	76,6
Ballast (tonnes)	lead 5 tons
Hull material	steel
Hull colour	blue
Hull thickness (mm)	minumum measurment 7,3 mm
Hull shape	S-bilged Klinkerbuid / gejoggeld
Keel type	long keel
Bilge keels	yes
Superstructure material	steel
Superstructure (mm)	6 mm
Deck plate thickness (mm)	6 mm
Rubbing strake	steel
Deck material	steel 6 mm
Deck finish	non-skid paint
Superstructure deck finish	paint
Antifouling (year)	December 2025
Dorades	yes



# EXPLORER MOTOR YACHT

Window frame	steel Galvanised / Gegalvaniseerd
Window material	double glazing
Portholes	brass
Insulation	rockwool
Fuel tank (litre)	steel 2x 4.050 l. 1x 3,400 l. total of 12.170 liter
Fuel daytank (litre)	670 l.
Level indicator (daytank)	Gauge glass / peilglas
Freshwater tank (litre)	steel 2x 4.410 l. total 8.820 liter
Level indicator (freshwater)	Gauge glass / peilglas
Blackwater tank (litre)	steel 1.087 l.
Blackwater tank extraction	pump Plus back up pump out via firefighting pump
Wheel steering	hydraulic
Inside helm position	yes
Emergency tiller	yes
More info on hull	originally built as UK 43. After a fire the boat has been completely stripped where only her hull has been saved. Her present owner rebuild this Cutter as a yacht with new decks and superstructure and everything rebuild as a new yacht all under supervision of Bureau Veritas.
More info on paintwork	Vessel sandblasted before painting and zinc silicat layer Hemple 2 component paintsystem December 2025
Extra info	Solas fire equipment for commercial vessels
Extra info	double layer of rockwool isolation with aluminium foil finishing
Extra info	Vessel has a valid CBB certifikate (renewed december 2025)

## ACCOMMODATION

Cabins	3
Berths	6
Interior	teak With light panels
Floor	carpet
Aft deck	yes
Pilot house	yes



# EXPLORER MOTOR YACHT

Deck saloon	yes
Heating	floor heating Buderus 27 Kw oil burner for floorheating, radiators and preheat
Heating 2	central heating Airheating/ventilation system heated by Boderus heater
Chart table	yes
Opening door to aft deck	watertight
Galley	yes
Countertop	stainless steel
Sink	stainless steel
Cooker	electric 4 burner
Oven	Electric Atag
Extractor	yes
Fridge	Atag
Freezer	mounted in the storage aft 500 Ltr
Hot water system	Boiler 220 / 380 V
Water pressure system	electrical
Dishwasher	Atag
Owners cabin	double bed
Bed length (m)	2.00 m.
Wardrobe	hanging/drawers/shelves
Bathroom	en suite
Toilet	en suite
Toilet system	Natural flow to sewage tank / vrije afloop naar vuilwatertank
Wash basin	in the bathroom
Shower	en suite
Guest cabin 1	twin single
Bed length (m)	2.00 m.
Wardrobe	hanging and shelves
Bathroom	shared
Toilet	shared
Toilet system	Natural flow to sewage tank / vrije afloop naar vuilwatertank



# EXPLORER MOTOR YACHT

Wash basin	in the bathroom
Shower	shared
Guest cabin 2	twin single
Bed length (m)	2.00 m.
Wardrobe	hanging and shelves
Bathroom	shared With second guest cabin
Toilet	Daytoilet between pilothouse and galley
Washing machine	Prepared (machine not available) / voorbereid (geen machine)
Extra info	two walk in stores sb side with ample storage space
Extra info	large storage in for and aftship accesable from deck

## MACHINERY

No of engines	1
Make	Mitsubishi
Type	6 SN MPTK
HP	420
kW	309.12
Fuel	diesel
Year installed	1989
Year of overhaul	in 2003 fully rebuild at Diesel Service Emmeloord since rebuild 182 hours
Maximum speed (kn)	13
Cruising speed (kn)	9
Consumption (l/hr)	30
Engine cooling system	closed keelcooling
Drive	shaft
Shaft seal	seals and bearings replaced 166 hours ago
Engine controls	bowden cable
Gearbox	hydraulic Reintjes Masson 1 : 4.704
Bowthruster	hydraulic 45 kW
Exhaust	dry



# EXPLORER MOTOR YACHT

Thrust bearing	yes
Propeller type	fixed
Propeller blades	3
Propeller shaft material	steel 110 mm
Shaft lubrication	grease
Electric bilge pump	also used as firefighting pump 2x
Bilge alarm	yes
Electrical installation	24 / 240 / 380 V
Generator	dry exhaust Mitsubishi 32 kW 380 V
Running hours generator	325 hr
Generator 2	Main engine driven inverter 22 kW 380 V
Batteries	yes
Start battery	with Victron 20 amp charger 2x 180 Ah
Service battery	with Victron 25 Amp charger 4x 200 Ah (2021)
Navigation Battery	with Mastervolt 12 amp charger 2x 80 Ah (2021)
Generator battery	80 AH
Battery charger	24V
Inverter	3000 W to 220V
Shorepower	with cable
Extra info	CSI alarmsystem for oil pressure and temp. coolong water level and temp, gearbox oil pressure and temp, hydraulic oil level main tank and steering, start battery level, blige level fwd, mid and engine room, bunker high level, low level daytank, high level sewage tank, fuel filters, lub oil bow thruster, and level service battery.
Extra info	total hydraulic pump power 60 Kw operated through main engine

## NAVIGATION

Compass	yes
Electric compass	with 115 hours Tokimec GM 21 Gyro
Fish finder	Furuno Fishfinder
VHF	2x Sailor RT2048 + one of these has DSC



# EXPLORER MOTOR YACHT

VHF handheld	Motorola
Autopilot	Robertson AP35
Rudder angle indicator	In the pilot
Radar	Furuno 2110 48 Miles Arpa radar with 93 hours and a Furuno 7041 24 Miles radar with 115 hours
GPS	Furuno GP80
Plotter	Via PC
Navtex	Navtec GMDSS SRH
Personal computer	For navigation program
AIS transceiver	AIS Saab class A
Radio receiver	Sailor RF2100 SSB
Navigation lights	yes
Searchlight	Imax 1000W remote controlled
Loudhailer	Vincor talk back system
Extra info	converts the gyro compass reading into digital coded bearing data Furuno AD coverter
Extra info	Electronic chart system

## EQUIPMENT

Boarding ladder	stainless steel
Gangway	Aluminium
Anchor	Pool 240 Kg
Anchor chain	110 meter
Anchor 2	Pool 240 Kg
Anchor chain	110 meter
Windlass	hydraulic Double with chain brake
Deck wash	yes
Sea railing	110 mm high Bullwork with 110 mm hoge verschansing
Grab rail (superstructure)	stainless steel
Lifebuoy	yes
Wiper	1x horizontal with fresch water spraying system
Horn	air pressure Zollner





# EXPLORER MOTOR YACHT

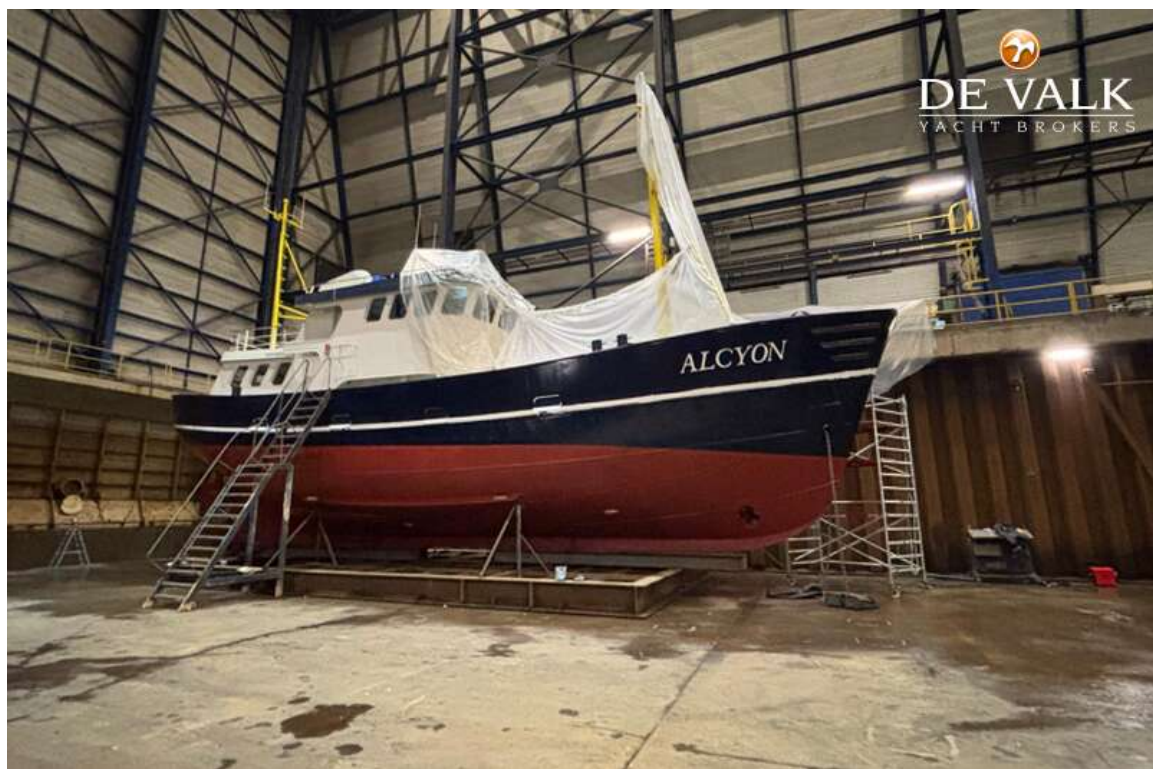
<b>Fenders</b>	yes
<b>Mooring lines</b>	yes
<b>Tools</b>	yes
<b>Alarm system</b>	Burgler alarm receiveble on a mobile telephone
<b>TV</b>	yes
<b>Radio-cd player</b>	yes
<b>Clock - barometer</b>	yes
<b>Fire extinguisher</b>	Fire fighting pump system
<b>Extinguisher in engine room</b>	gas fire fighting system in engine room

## RIGGING

<b>Rigging</b>	yes
<b>Material mast</b>	Steel
<b>Mainsail</b>	prepared for a auxilary/stability sail (sail not avaible)
<b>Extra info</b>	forward mast with hoisting beam 750 Kg



# EXPLORER MOTOR YACHT

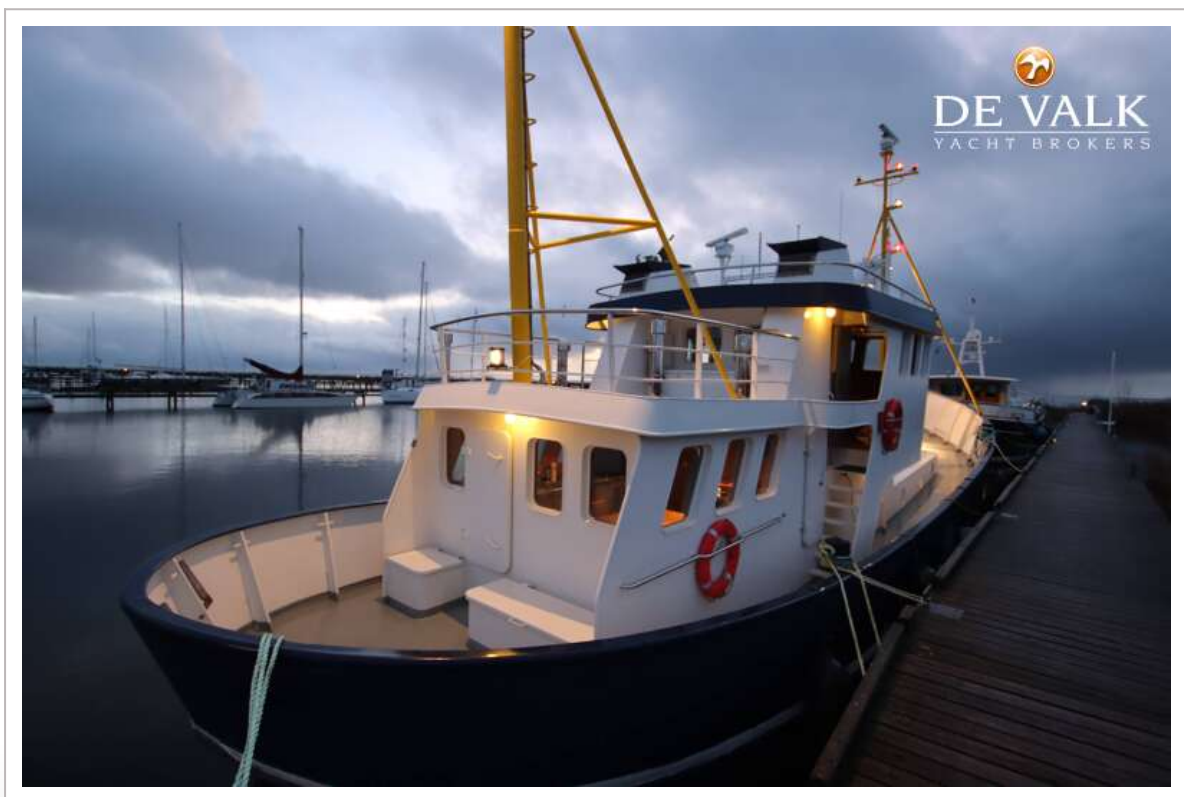


# EXPLORER MOTOR YACHT





# EXPLORER MOTOR YACHT



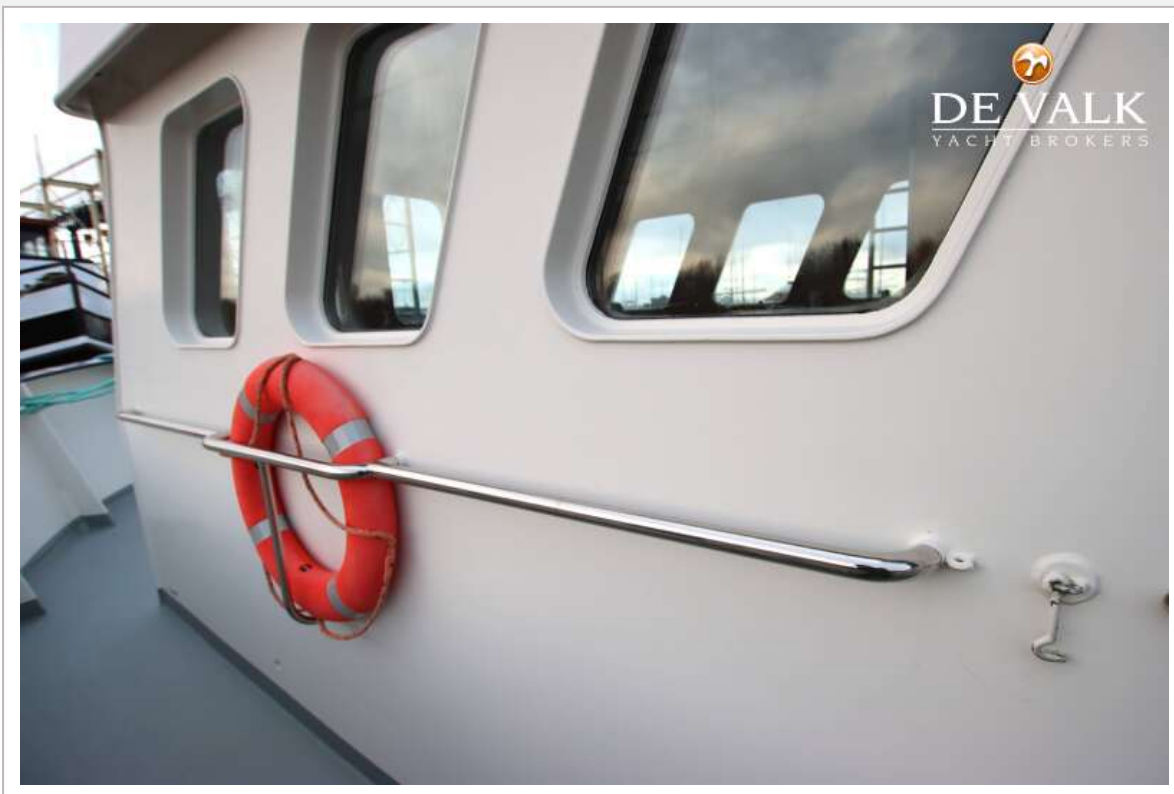
# EXPLORER MOTOR YACHT



# EXPLORER MOTOR YACHT



# EXPLORER MOTOR YACHT





# EXPLORER MOTOR YACHT





# EXPLORER MOTOR YACHT

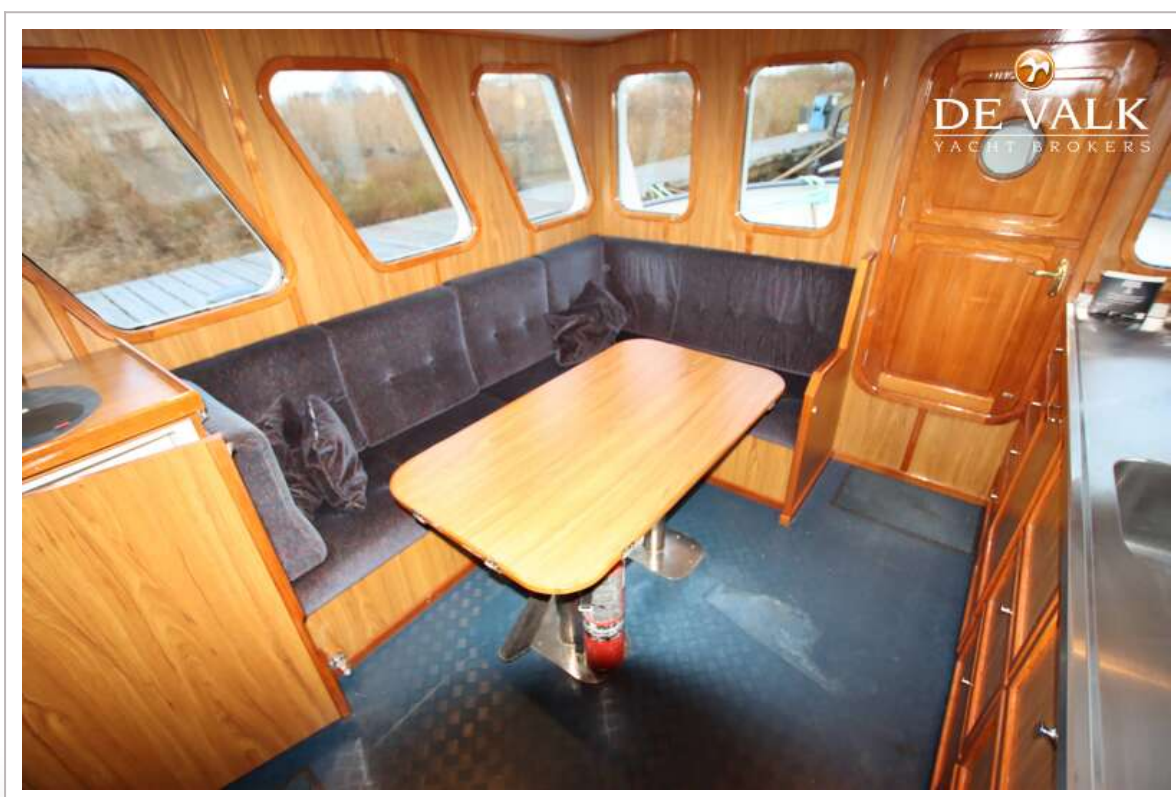


# EXPLORER MOTOR YACHT

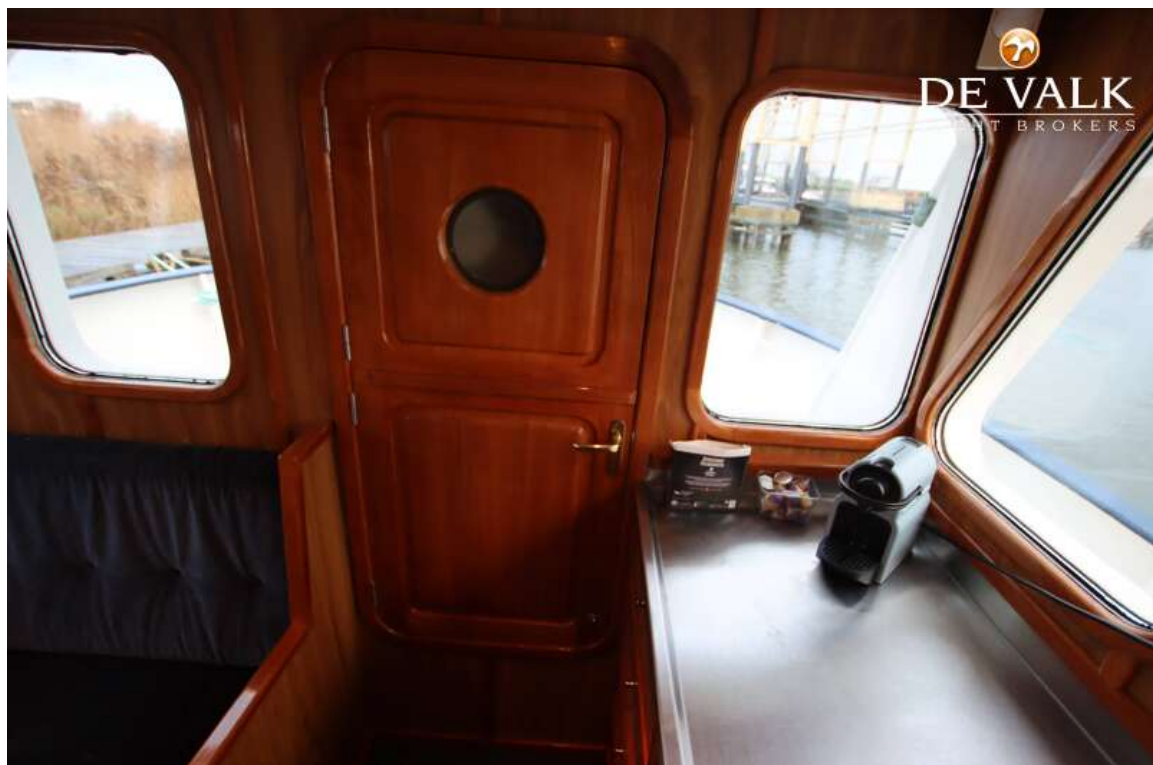




# EXPLORER MOTOR YACHT

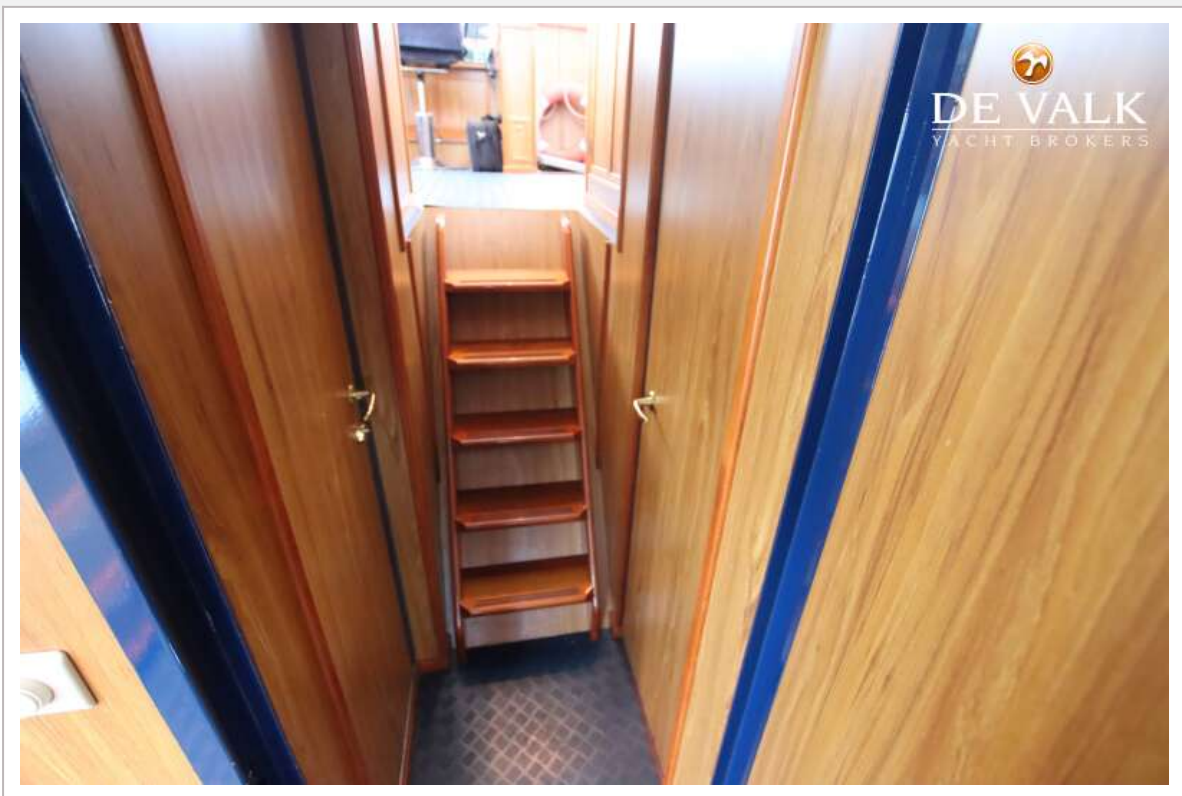


# EXPLORER MOTOR YACHT





# EXPLORER MOTOR YACHT



# EXPLORER MOTOR YACHT

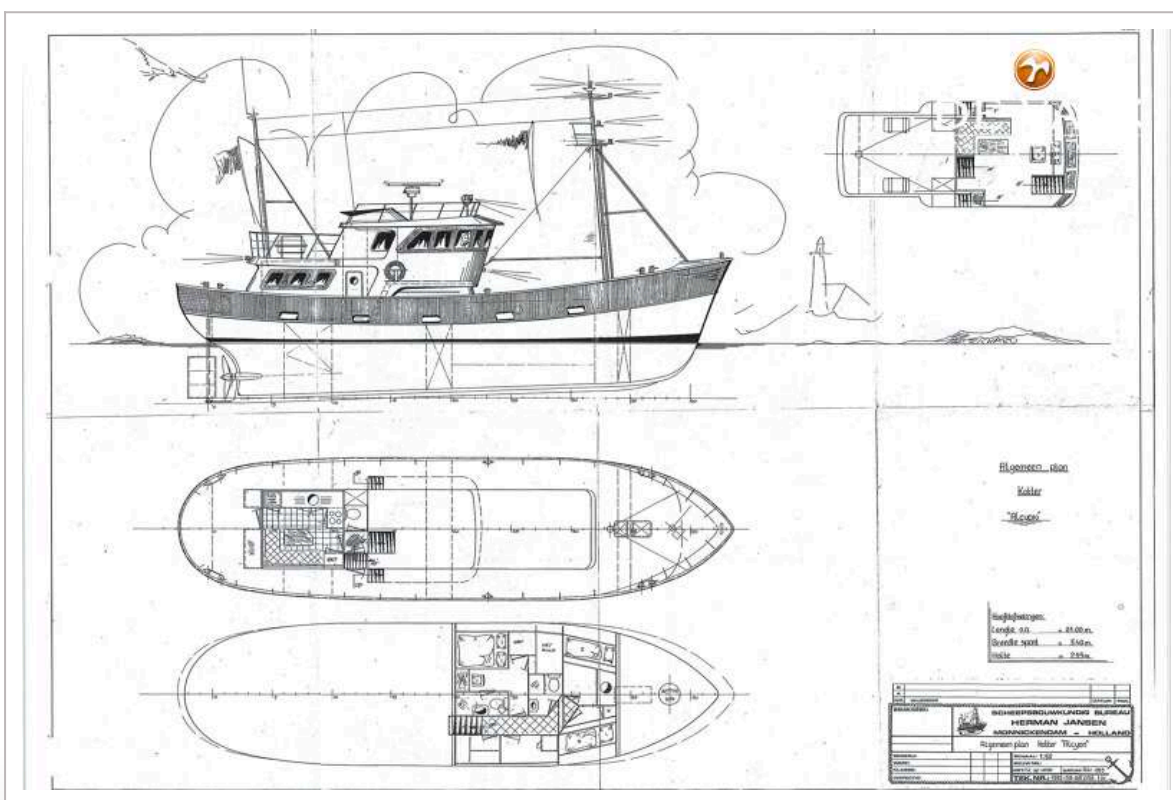


# EXPLORER MOTOR YACHT





# EXPLORER MOTOR YACHT



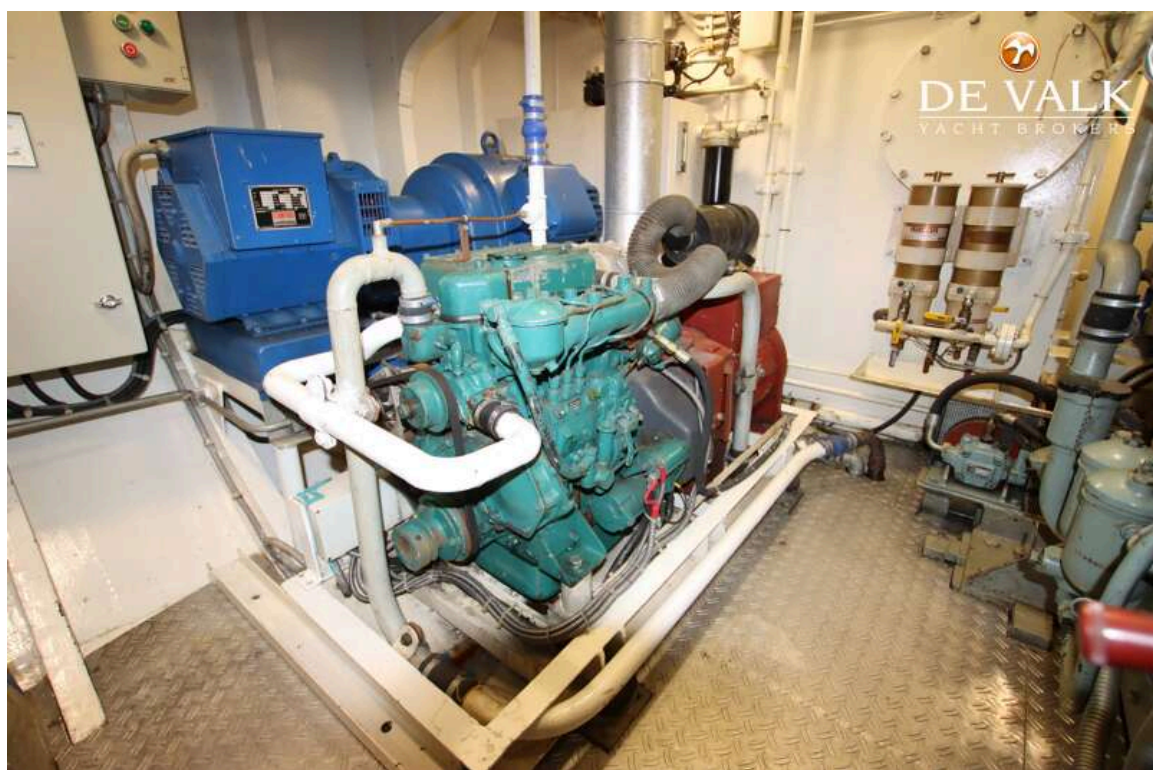


# EXPLORER MOTOR YACHT





# EXPLORER MOTOR YACHT



# EXPLORER MOTOR YACHT

