



DE VALK
YACHT BROKERS



FLEUR DE LYS 54



DE VALK
YACHT BROKERS

FLEUR DE LYS 54

BROKER'S COMMENTS

Rare opportunity. A true gentleman's yacht! Very comfortable and economical cruising yacht. Her indestructible hull is made of strong Iroko, by Dagless Shipyard. She has it all for a pleasant stay on board. Air-con and heating as well as a washing and drying room. Above all, the wooden construction offers the best climate you can have on a ship. Current owner has invested a lot in modern MAN engines and a strong 25 kW genset. With her large engines Lady Gala reaches 8,5kn cruising speed at 1300 rpm and only 22 l/h. The hydraulic bow thruster allows a small crew to manoeuvre easily.

Miha Spendal

SPECIFICATIONS

Dimensions	16.20 x 4.60 x 1.55 (m)	Builder	Dagless LTD
Built	1974	Cabins	3
Material	Wood	Berths	6
Engine(s)	2 x MAN D2866 L diesel	Hp/Kw	2 x 225.00 (hp), 165.60 (kw)
Asking price	€ 240.000 (VAT Paid)	Lying	elsewhere / Not at sales office

CONTACT

Sales office	De Valk Istria	Telephone	+386 (1) 600 2704
Address	(Marina Izola) Dantejeva Ulica 22 6310 Izola SI	E-mail	istria@devalk.nl

DISCLAIMER

These particulars are given in good faith as supplied but cannot be guaranteed.



FLEUR DE LYS 54

GENERAL

Model	FLEUR DE LYS 54
Type	motor yacht
LOA (m)	16,20
LWL (m)	14,00
Beam (m)	4,60
Draft (m)	1,55
Year built	1974
Launched	1975
Builder	Dagless LTD
Country	United Kingdom
Displacement (t)	26
CE norm	NA
Hull material	wood
Hull colour	White
Hull shape	deep-V
Superstructure material	wood Wood / aluminium
Rubbing strake	wood
Deck material	wood
Deck finish	non-skid paint
Superstructure deck finish	non-skid paint
Cockpit deck finish	teak
Antifouling (year)	2024
Window frame	aluminium
Window material	tempered glass
Flybridge cover	Yes
Flybridge cockpit cover	yes
Radar arch	non collapsible
Fuel tank (litre)	steel 1050
Fuel tank 2 (litre)	steel 1050
Level indicator (fuel tank)	yes



Freshwater tank (litre)	steel 1600
Level indicator (freshwater)	Manual gauge
Wheel steering	yes
Inside helm position	yes
Flybridge helm position	yes
More info on hull	In excellent condition
More info on paintwork	Refreshed 2023 and 2024

ACCOMMODATION

Cabins	3
Berths	6
Interior	American maple
Floor	Vinyl and carpet
Aft deck	yes
Heating	central hot water
Air-conditioning	yes
Dining room	yes
Opening door to aft deck	yes
Galley	yes
Countertop	tiles
Sink	stainless steel
Cooker	ceramic
Oven	Electric, Bosch
Microwave	Bosch
Fridge	2 x 24V units
Freezer	yes
Hot water system	220V Boiler 40lt
Water pressure system	electrical
Dishwasher	Bosch
Crockery	yes
Owners cabin	double bed



Wardrobe	hanging/drawers/shelves
Bathroom	en suite
Toilet	en suite
Toilet system	electric
Shower	en suite
Guest cabin 1	v-bed
Wardrobe	hanging/drawers/shelves
Bathroom	shared
Toilet	shared
Toilet system	electric
Shower	shared
Guest cabin 2	double bed
Wardrobe	hanging/drawers/shelves
Bathroom	shared
Toilet	shared
Toilet system	electric
Shower	shared
Washing machine	Miele
Dryer	Bauknecht
Flybridge	yes

MACHINERY

No of engines	2
Make	MAN
Type	D2866 L
HP	225
kW	165.60
Fuel	diesel
Year installed	1995
Engine hours	2250
Engine cooling system	freshwater heat exchanger



Drive	shaft
Engine controls	pneumatic
Gearbox	mechanical
Bowthruster	hydraulic Side-Power SEP 150/215
Propeller type	fixed
Propeller blades	3 blade bronze
Propeller shaft material	stainless steel
Electric bilge pump	3 units
Generator	25kW, diesel
Batteries	yes
Start battery	yes
Service battery	16 x 105Ah
Generator battery	2 x 100Ah
Battery charger	Mastervolt
Inverter	2,5kW Mastervolt
Shorepower	with cable
Watermaker	Village Marine
Stabilizers	fin 4 x fixed, 2 x hydraulic

NAVIGATION

Compass	Silva
Compass on flybridge	Silva
Electric compass	NECO
Depth sounder	yes
Depth sounder/log	2 x Tridata ST50 Autohelm
Windset	2 x Raymarine, Wind ST50
Fish finder	Koden CVS 108
VHF	3 units, Standard Horizon Eclipse, Raymarine Ray 240E and Ray 2
VHF handheld	yes
Autopilot	Autohelm 7000, from both steering positions



Radar	Koden MD3600
GPS	Koden KGP95
Plotter	Pan Nav 16 PRO
Weather receiver	Meteosat 2000 and Fastnet Mad 44
Navtex	Nav 4 Plus
Radio receiver	SSB Lowrance LVR 80 and ICOM ICM 700
Navigation lights	yes
Loudhailer	yes

EQUIPMENT

Winter cover	yes
Cockpit table	yes
Cockpit chairs	yes
Bathing platform	yes
Boarding ladder	yes
Gangway	yes
Anchor	65kg, Hall
Anchor chain	12mm
Windlass	electrical 2000W / 24V, Orvea
Capstan	yes
Dinghy	rigid inflatable Novurania
Outboard	Honda
Davits	Lifting platform
Grab rail (superstructure)	wood
Railing side opening gates	yes
Life raft	container
Lifejackets	yes
Safety harness	yes
Wiper	yes
Clearview window	yes
TV	Saloon and owners cabin



Satellite	Tracvision
Radio-cd player	yes
DVD player	yes
Surround Sound System	yes
Fire extinguisher	yes
Extinguisher in engine room	yes
Auto extinguisher system	Thermo valve activated
Extra info	CO and GPL sensors
Extra info	Diving Compressor Bauer
Extra info	Air Compressor Tiger 265M



FLEUR DE LYS 54





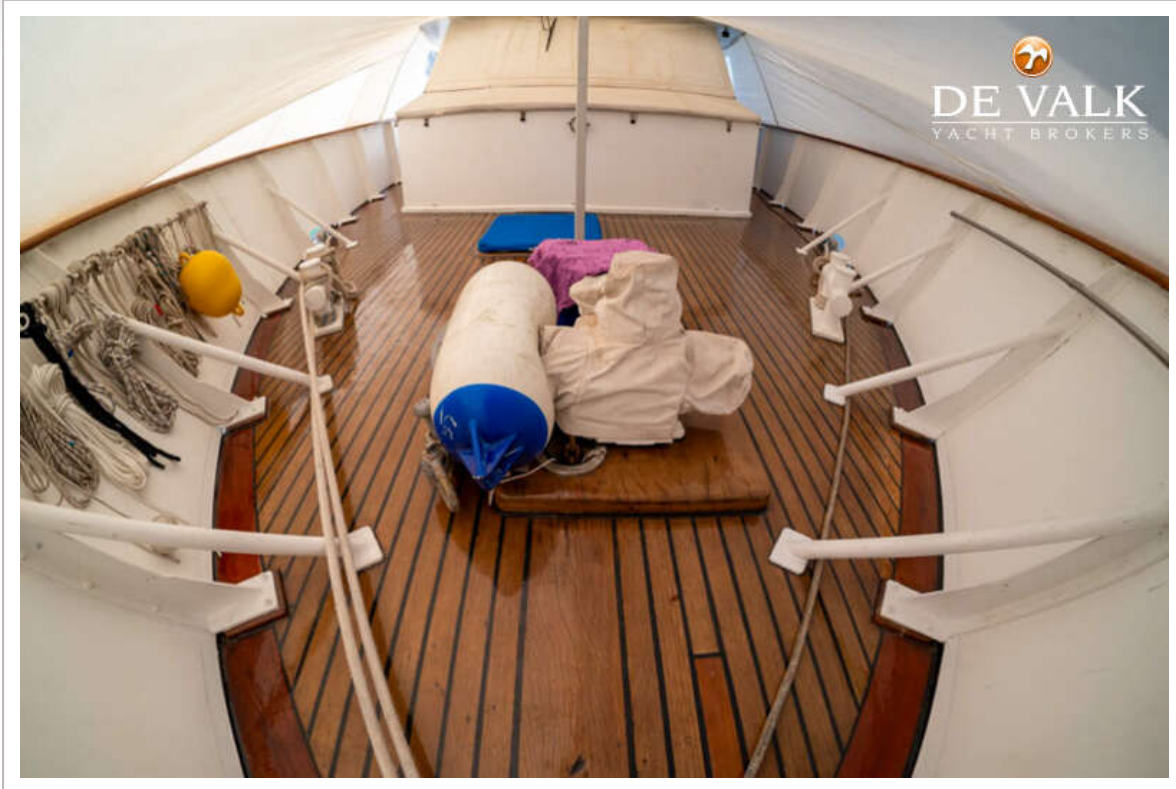
FLEUR DE LYS 54



FLEUR DE LYS 54



FLEUR DE LYS 54



FLEUR DE LYS 54

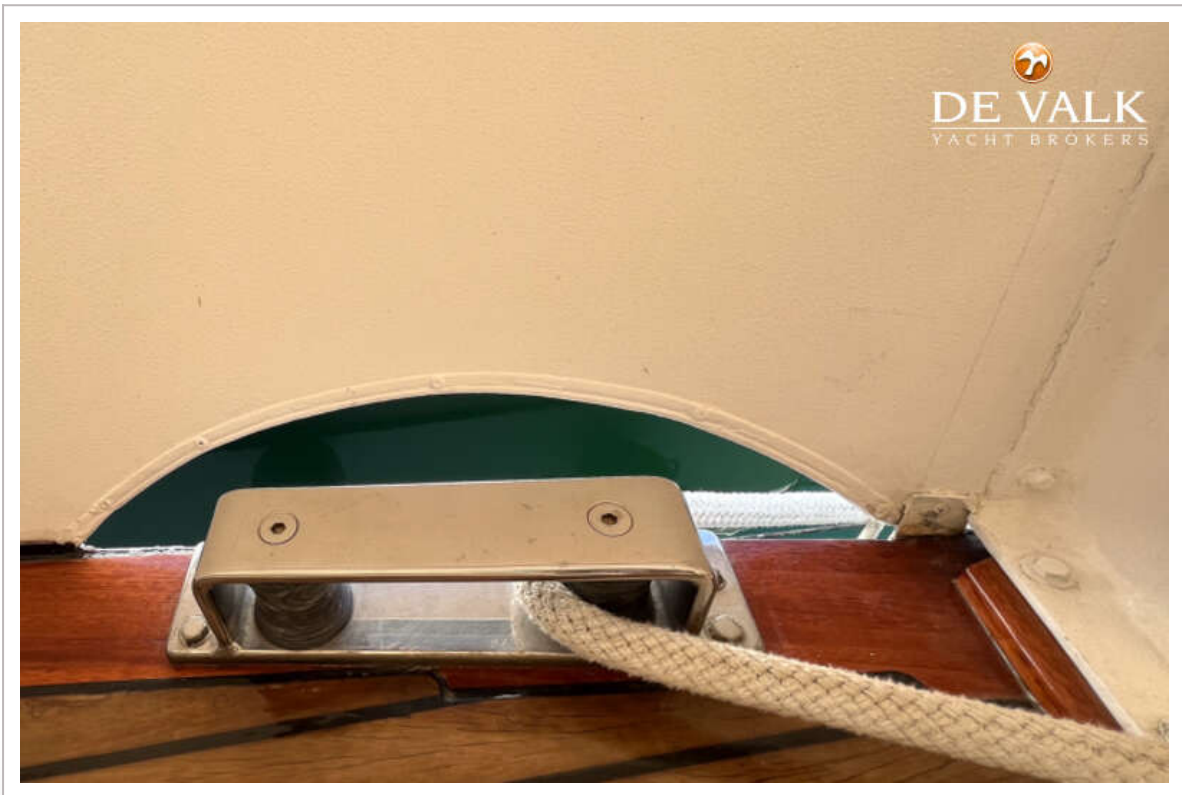
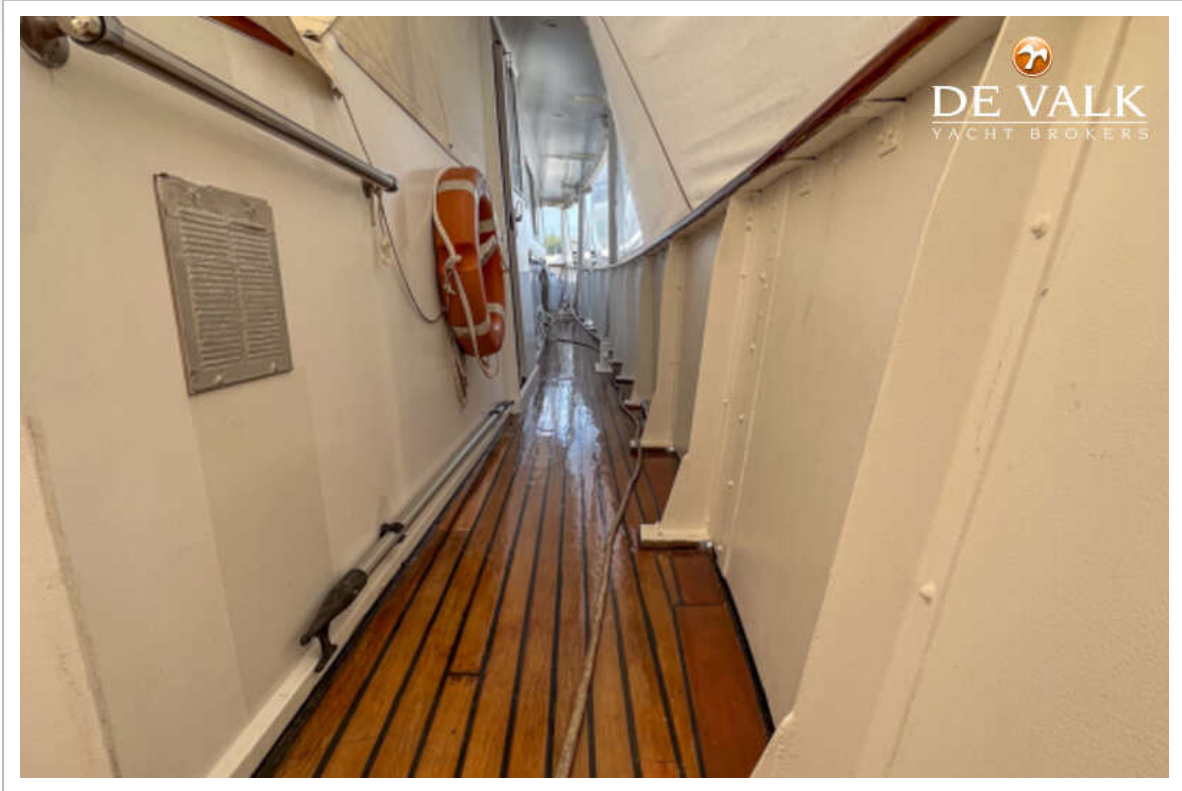


FLEUR DE LYS 54



FLEUR DE LYS 54

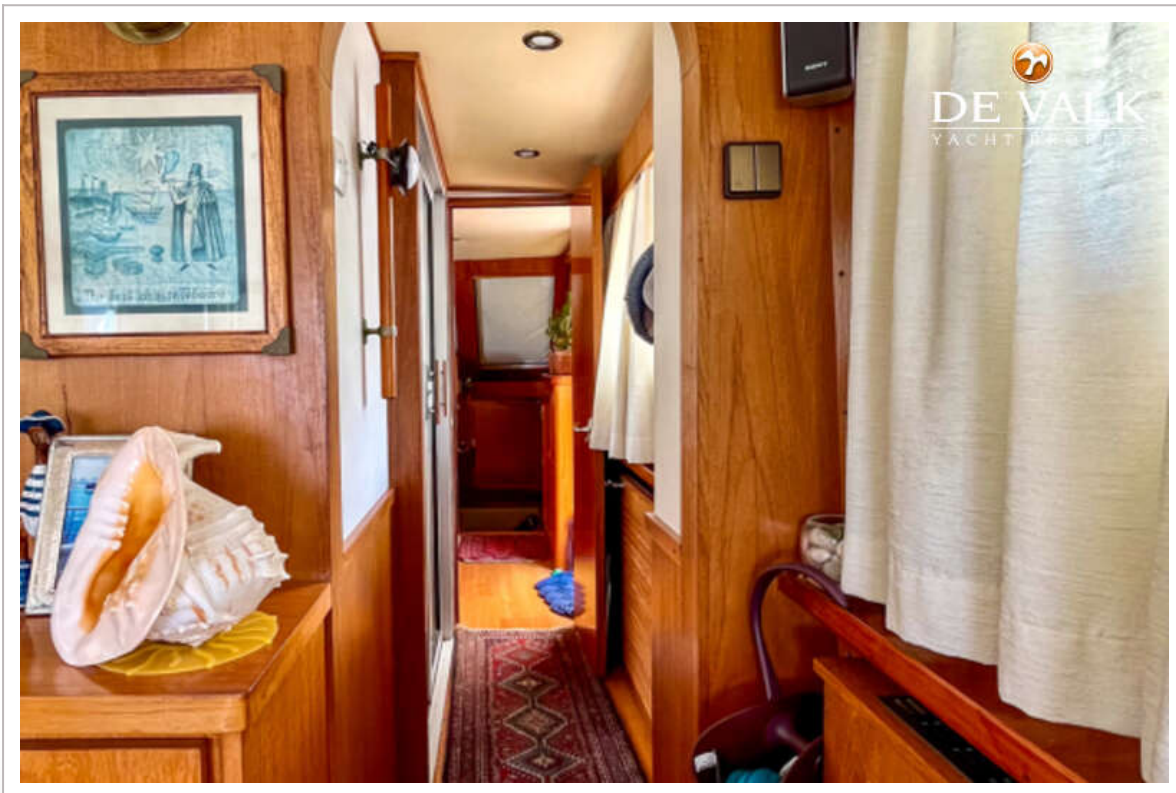




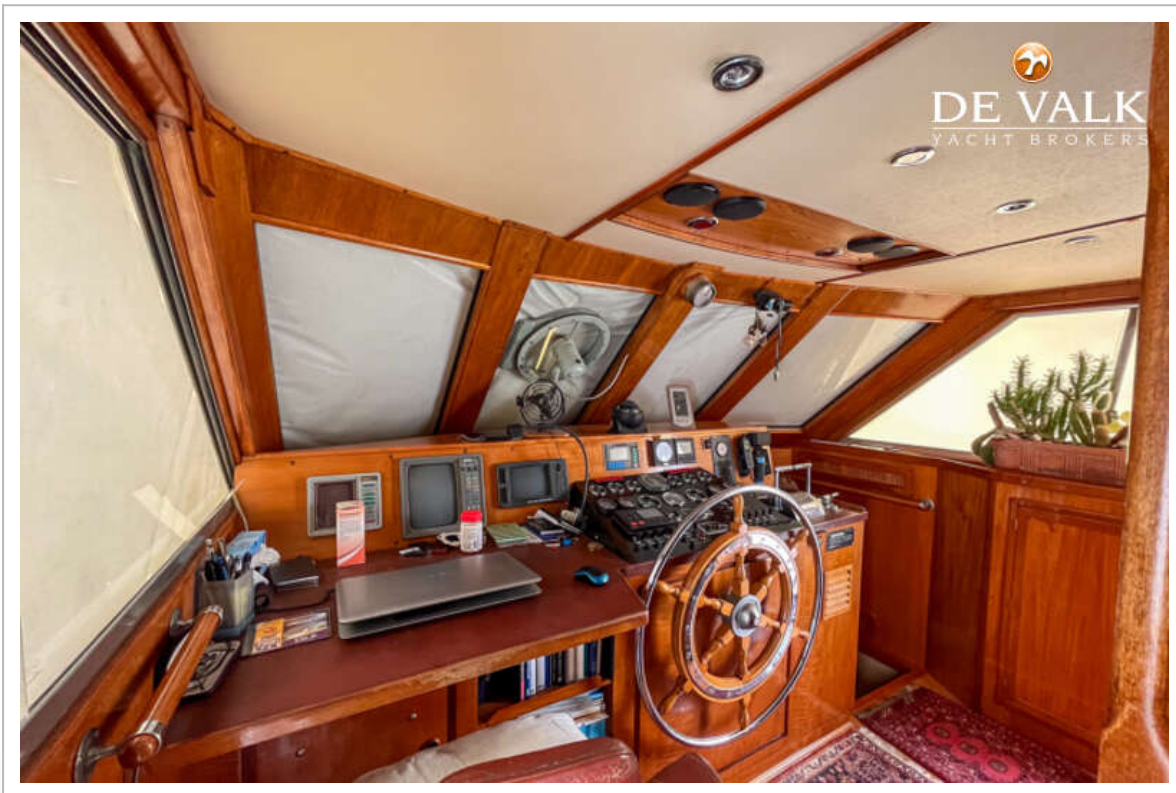
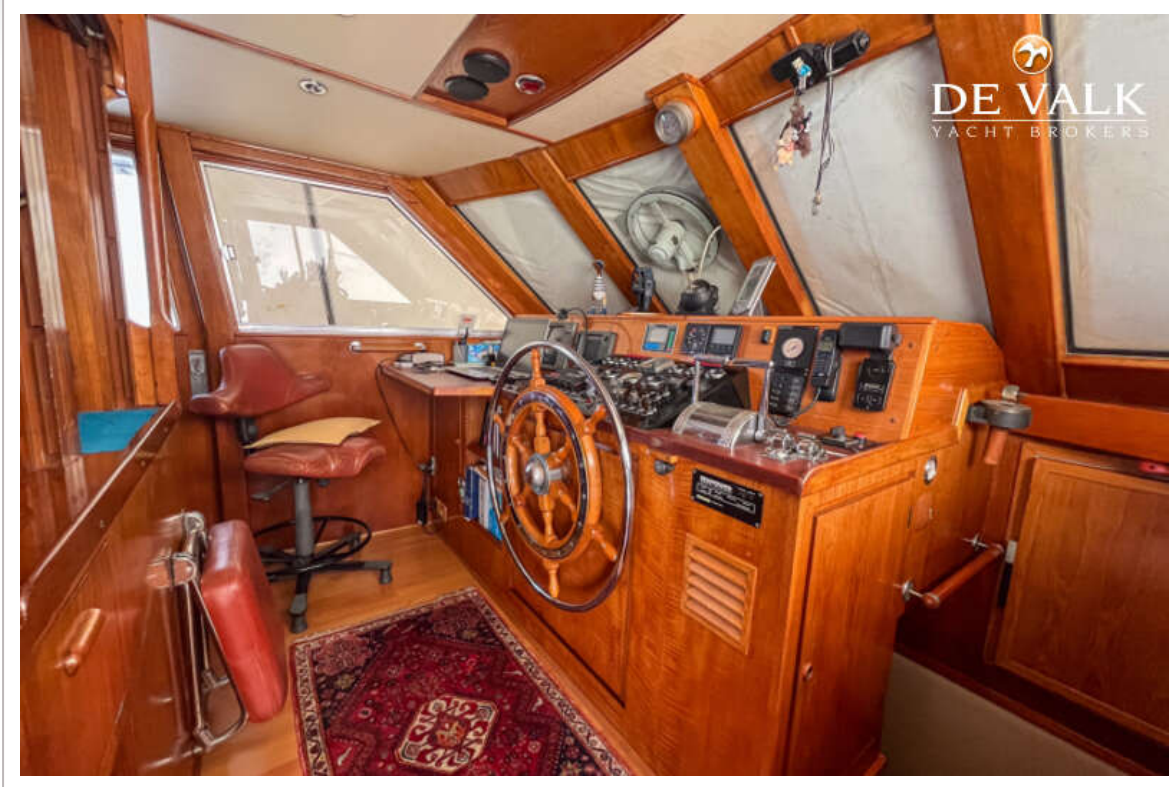
FLEUR DE LYS 54



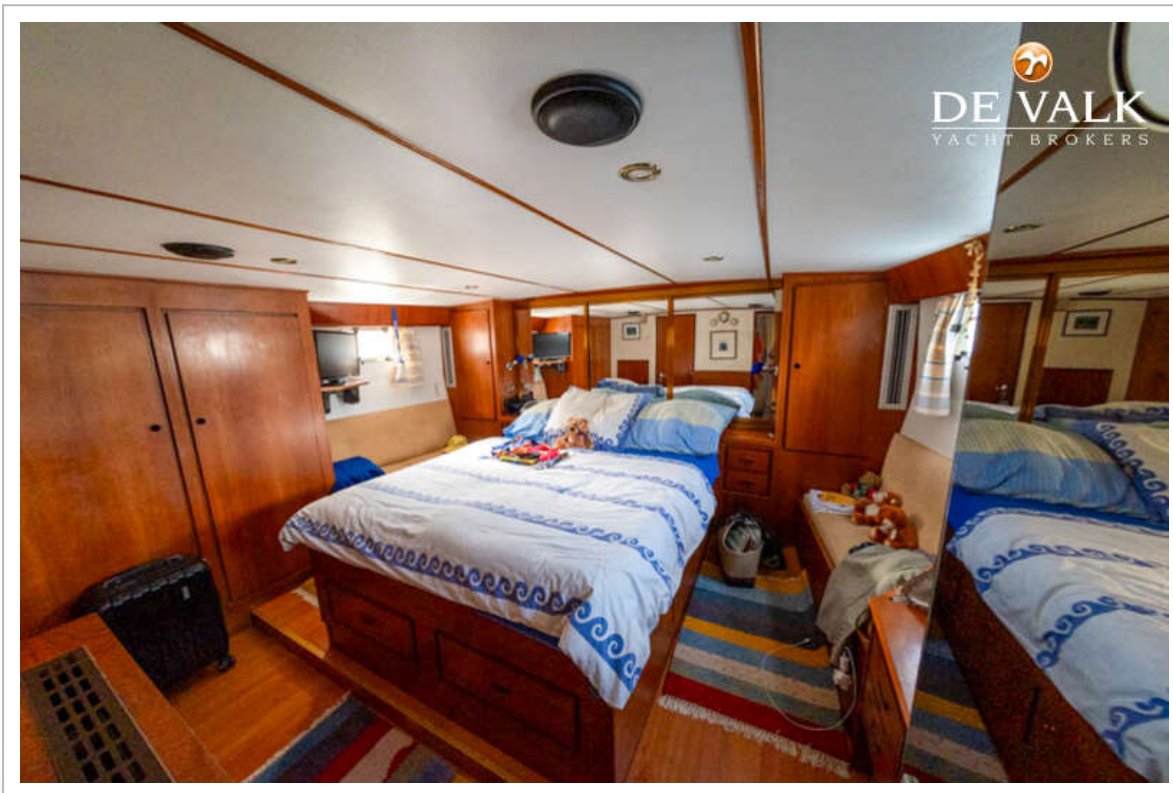
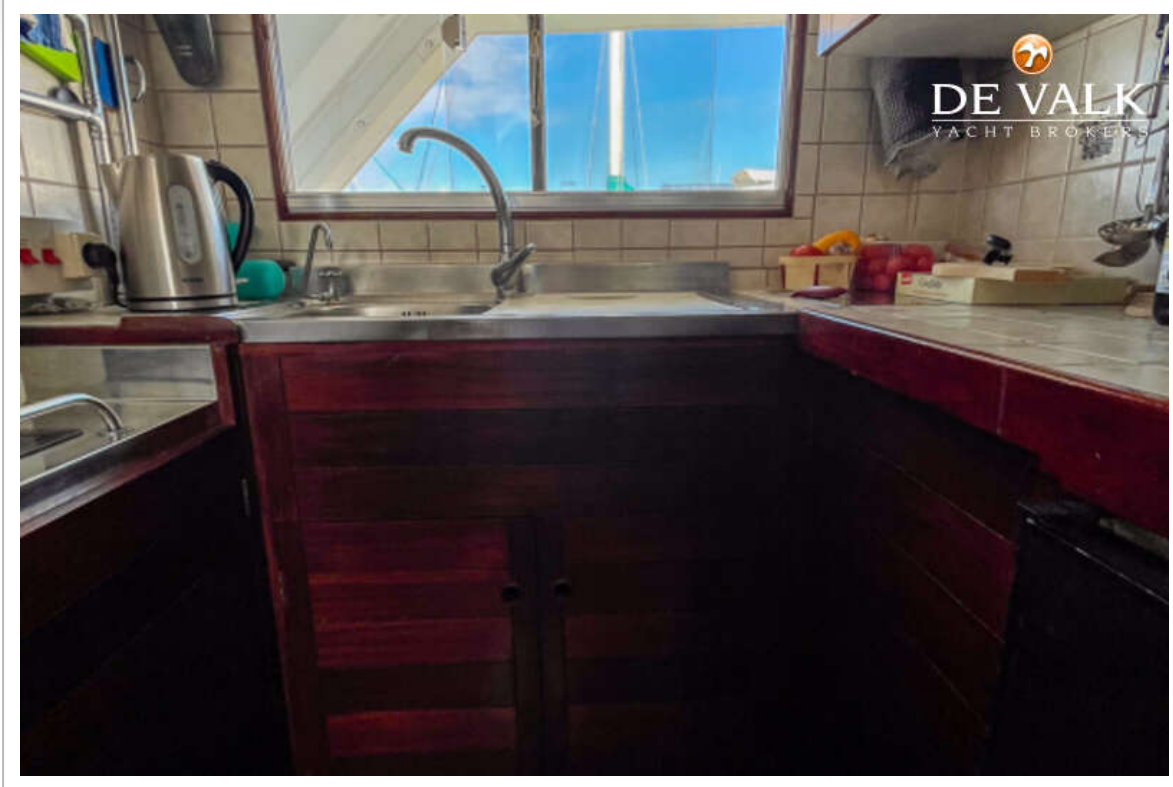
FLEUR DE LYS 54



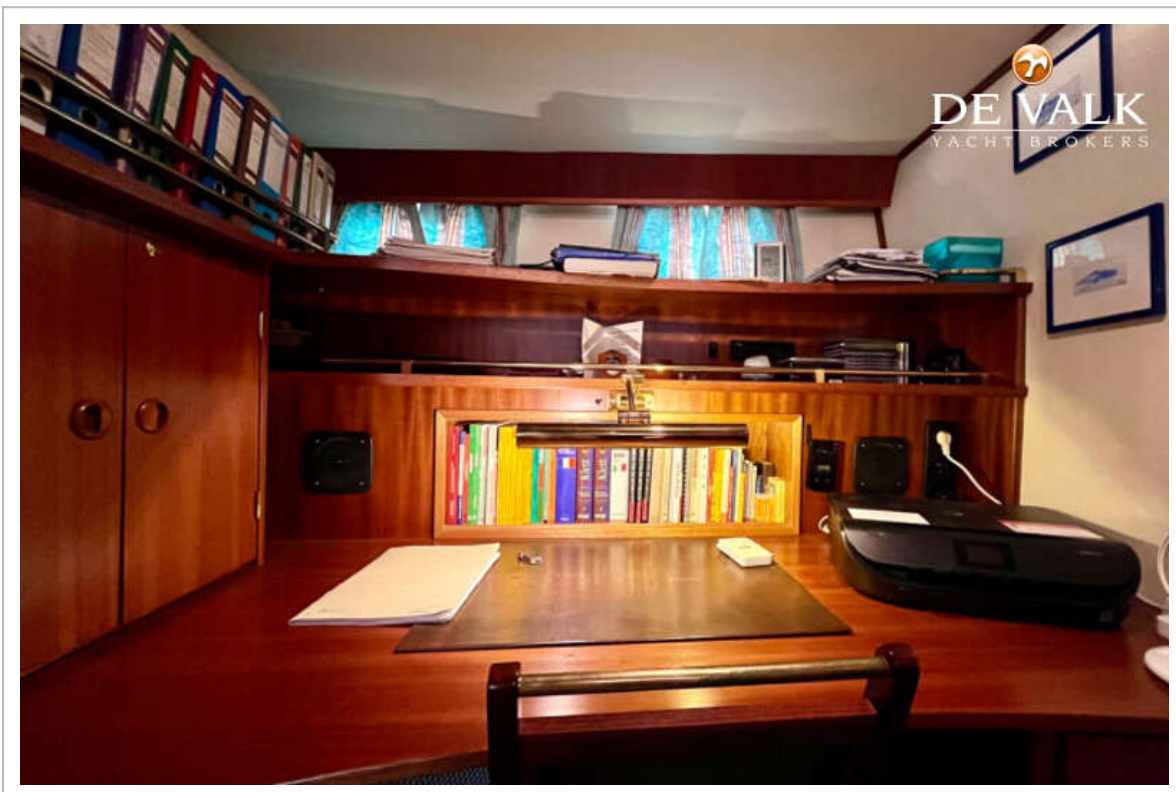
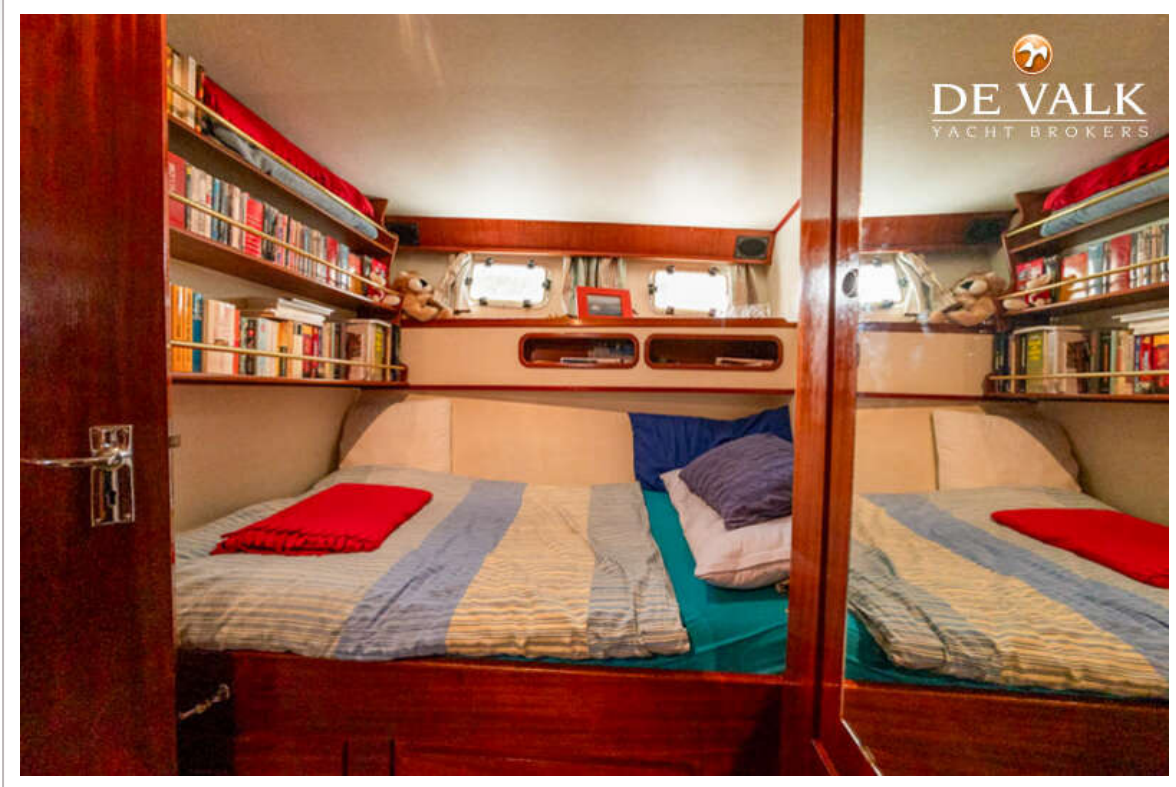
FLEUR DE LYS 54

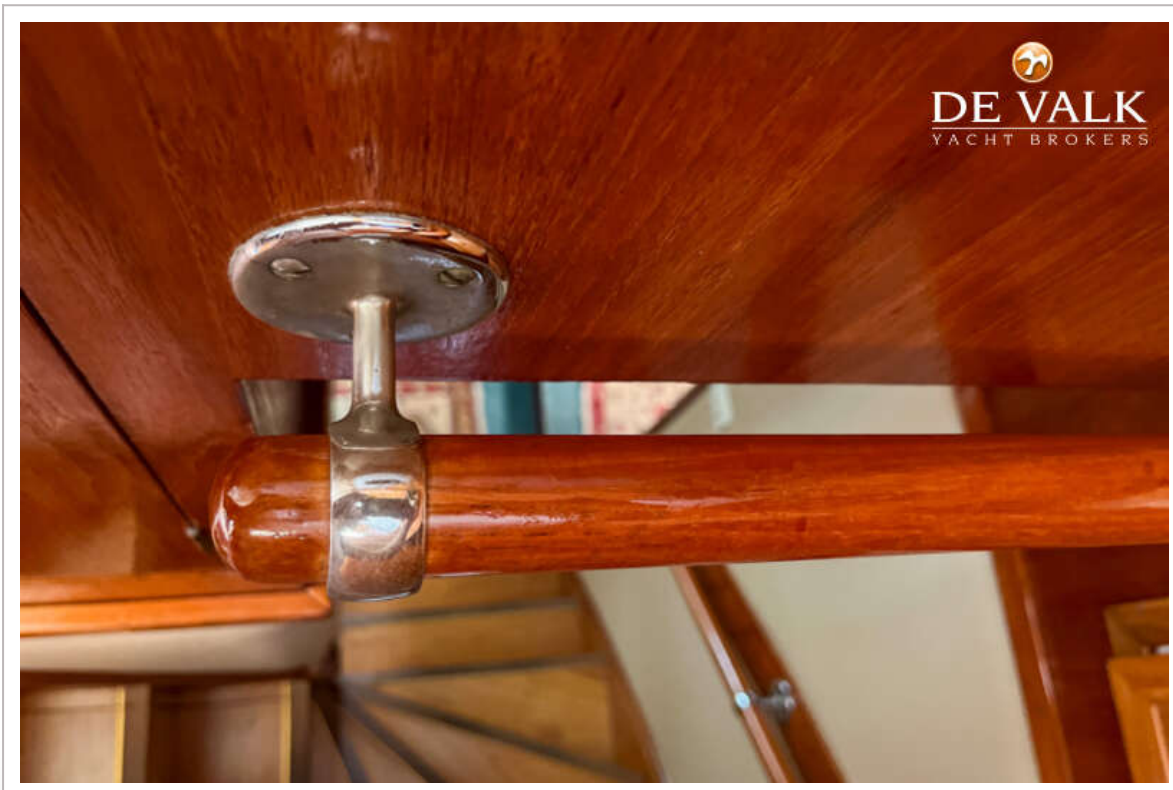


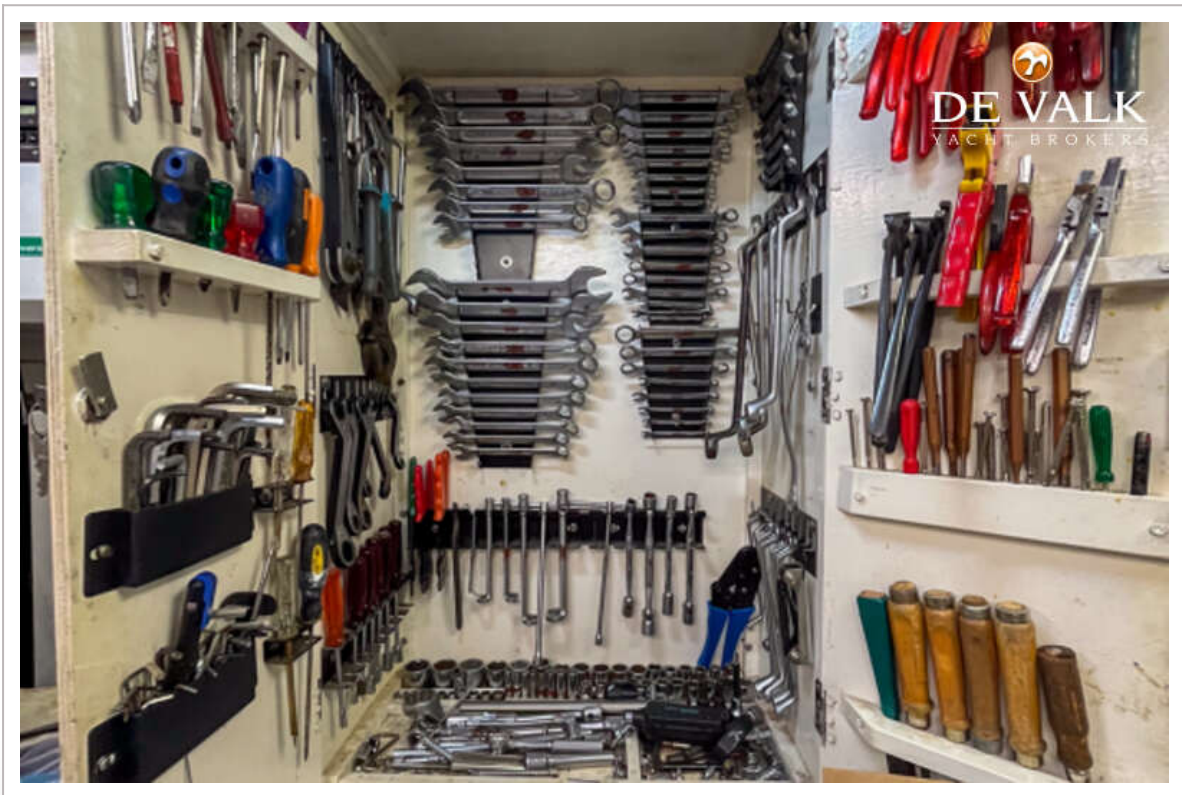
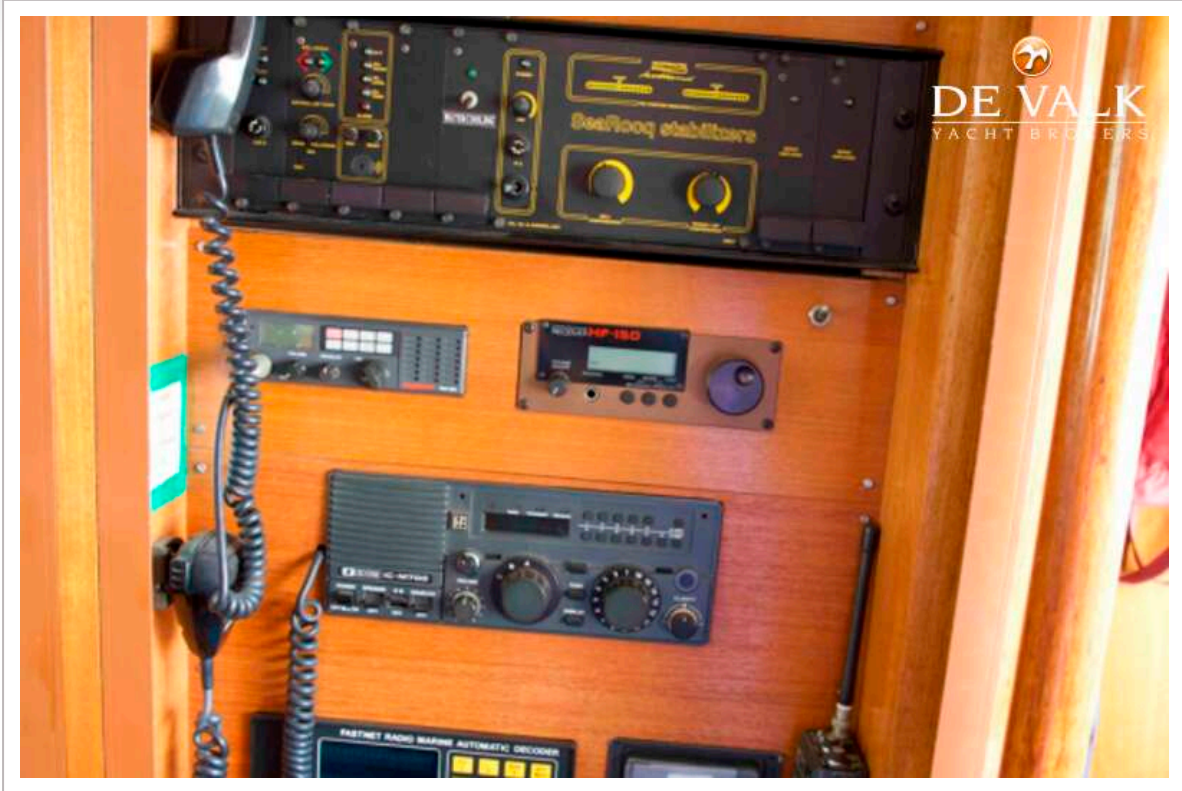
FLEUR DE LYS 54



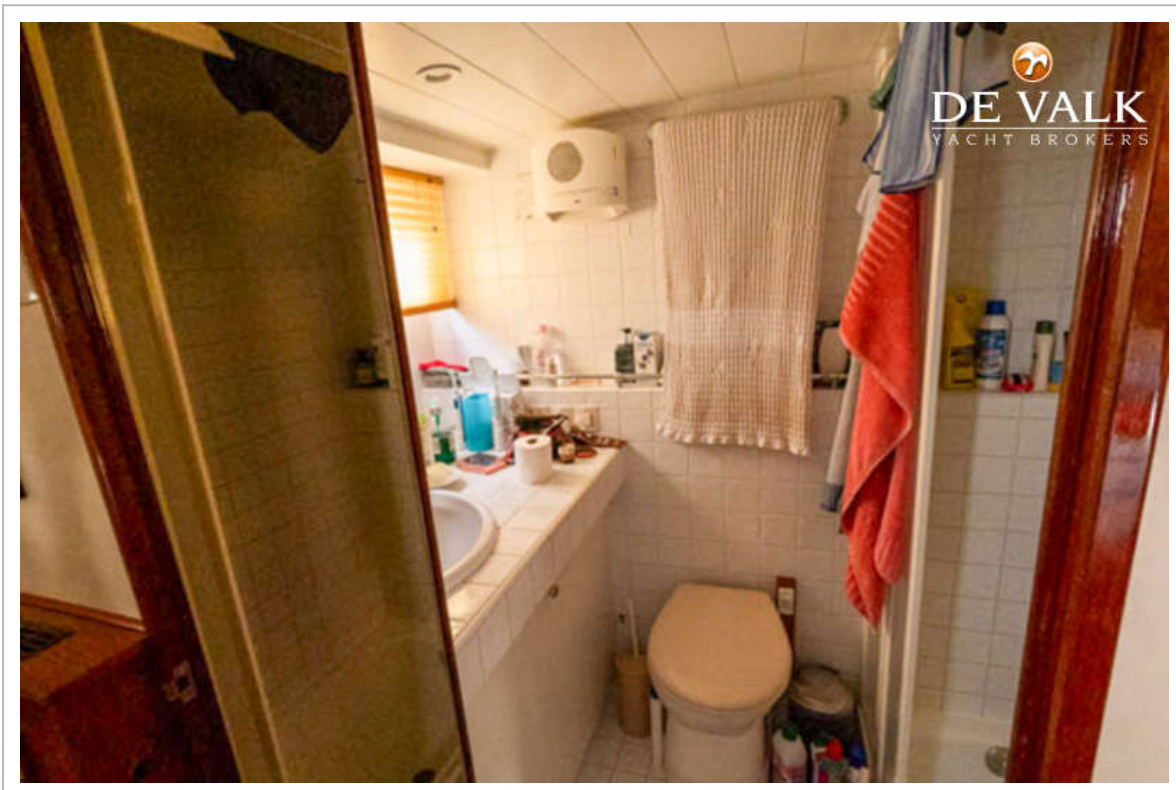
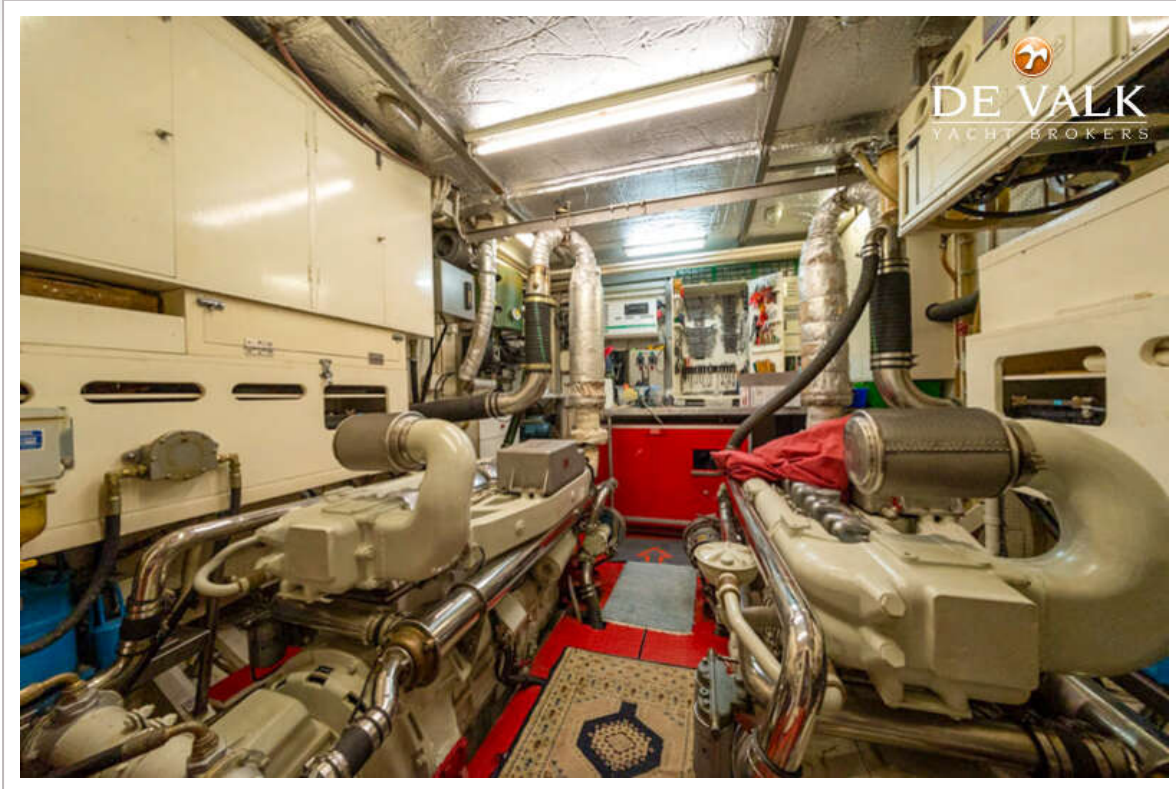
FLEUR DE LYS 54







FLEUR DE LYS 54



FLEUR DE LYS 54

