



DE VALK
YACHT BROKERS



CENTURION 59



DE VALK
YACHT BROKERS

BROKERAGE | CHARTER | BERTHS | FINANCE | INSURANCE | YACHT MANAGEMENT

BROKER'S COMMENTS

"Amanda" was built by Wauquiez in 1991 as the 4th boat in a serie of 9 high performance cruisers just under 60 feet. She was originally built for a Frenchmen who used her in the South of France, then moved her to Holland where she was subsequently bought by the present owner in September 1995. The present Dutch owner keeps her in Hindeloopen on the sweet water lake "IJsselmeer" from where he makes trips to both Scandinavia as well as the Channel Islands during his holidays and shorter local trips during the weekends.

Hans Visser

SPECIFICATIONS

Dimensions	17.83 x 5.03 x 2.30 (m)	Builder	Henry Wauquiez
Built	1991	Cabins	3
Material	GRP	Berths	7
Engine(s)	1 x Volvo Penta TAMD31B diesel	Hp/Kw	130.00 (hp), 95.55 (kw)
Asking price	€ 379.000 (VAT Paid)	Lying	contact Hindeloopen

CONTACT

Sales office	De Valk Hindeloopen B.V.	Telephone	+31 514 52 40 00
Address	Oosterstrand 1 8713 JS Hindeloopen NL	E-mail	hindeloopen@devalk.nl

DISCLAIMER

These particulars are given in good faith as supplied but cannot be guaranteed.



GENERAL

Model	CENTURION 59
Type	sailing yacht
LOA (m)	17,83
LWL (m)	14,86
Beam (m)	5,03
Draft (m)	2,30
Air draft (m)	23,50
Year built	1991
Builder	Henry Wauquiez
Country	France
Designer	Edward Dubois
Displacement (t)	26
CE norm	A
Hull material	GRP
Hull colour	white
Hull shape	round-bilged with double light blue striping
Keel type	fin keel
Superstructure material	GRP
Deck material	GRP
Deck finish	teak
Superstructure deck finish	teak
Cockpit deck finish	teak
Antifouling (year)	2024
Dorades	5 Vetus dorades on the superstructure
Window frame	aluminium 3 fixed windows
Deckhatch	10 Goyot opening deckhatches and large sliding deckhatch to foreward cabin
Portholes	4 Goyot opening portholes, 2 on each side of the superstructure
Fuel tank (litre)	stainless steel approx. 450 ltr.
Level indicator (fuel tank)	yes
Freshwater tank (litre)	Approx. 900 ltr. in 6 individual 150 liter tanks



Wheel steering	mechanical with a custom Whitlock pedestal
Emergency tiller	yes

ACCOMMODATION

Cabins	3
Berths	7
Crew cabin	In foreship. Double access. Shower and manual toilet.
Crew berths	2
Interior	teak with light alcantara sealings and blue alcantara upholstery
Floor	teak and holly
Saloon	large U-sofa for 6 persons, a large table, two chairs and a L-sofa.
Headroom saloon (m)	2.00 mtr. in the saloon and 1.90 mtr. in the rest of the vessel
Heating	diesel ducted hot air Eberspächer D7L
Chart table	yes
Aft Cabin	Owners cabin
Galley	U-shaped
Countertop	corian
Sink	stainless steel double
Cooker	calor gas Techimpex 3 burner stainless steel
Oven	In cooker
Microwave	Whirlpool microwave 230 volt
Fridge	Frigoboat 24 Volt watercooled compressors, seperate 24 Volt compressor in the freezer new 2025
Freezer	yes
Hot water system	220V + engine 80 liter boiler
Water pressure system	yes
Owners cabin	French bed aft cabin
Bed length (m)	King-sized bed
Wardrobe	Ampel storage lockers and drawers
Bathroom	en suite with several mirrored door lockers
Toilet	Sanimarin



Toilet system	electric
Wash basin	Large worktop
Shower	yes
Extra info	at port a small seat in the centre forward a vanity table with seat and mirror
Guest cabin 1	double bed port
Bed length (m)	2 mtr.
Wardrobe	Ampel storage in drawers and lockers
Extra info	with overhead opening deckhatch and fixed window
Guest cabin 2	bunk bed starboard
Bed length (m)	2 mtr.
Wardrobe	hanging and drawers
Bathroom	separate
Toilet	Sanimarin
Toilet system	electric
Wash basin	yes
Shower	yes
Extra info	There is a safe hidden in the ship

MACHINERY

No of engines	1
Make	Volvo Penta
Type	TAMD31B
HP	130
kW	95.55
Fuel	diesel
Year installed	1991
Year of overhaul	2010 1000 hours after overhaul
Maximum speed (kn)	9
Range (nm)	500
Engine cooling system	Indirect cooling system



Drive	shaft
Engine controls	Engine controls for revs, temp, oilpressure and hours
Gearbox	mechanical
Bowthruster	electric Maxpower retractable electric hydraulic bowthruster model 200 g
Propeller type	MaxProp
Propeller blades	3
Propeller shaft material	stainless steel
Manual bilge pump	1x in cockpit
Electric bilge pump	2x with automatic switch
Generator	Fisher Panda 6000i 6 KVA new 2010
Running hours generator	35,7
Batteries	in total 5 separate battery systems new 2020
Start battery	1x 85 Ah 12 Volt start batteries new 2020
Service battery	260 Ah 24 Volt service battery pack new 2020
Bowthruster battery	200 Ah 24 Volt battery pack for bowthruster
Windlass battery	230 Ah 24 Volt power battery pack for winches
Battery charger	Victron Skylla 24V 80Amp Victron Blue smart charger 12V 30Amp Bluetooth Victron energy Blue power 12/7
Inverter	Victron energy Phoenix 24/750
Shorepower	With Hubbel waterresistant plug
Extra info	all hydraulic hoses replaced in 2017, oil changed in 2021

NAVIGATION

Compass	Henry Wauquiez custom made C-Plath magnetic pedestal compass
Multi control display	2x Raymarine ST60 GRAPHIC 2x Raymarine ST 60 MULTI
Depth sounder	Raymarine ST60 DEPTH
Log	Raymarine ST60 SPEED
Windset	Raymarine ST60 WIND Raymarine ST60 CH WIND new transducers 2024
Repeater	yes



VHF	Raymarine Ray 91 with two handsets + Raymarine Wireless Handmic
VHF handheld	Icom BC-166
Autopilot	Raymarine P70 display Raymarine EV400 drive new drive 2024
Radar	Raymarine Quantum 2 Doppler new 2024
GPS	Raymarine GPS RN 300,
Radar/GPS/plotter	Raymarine C90 W outside Raymarine Hybridtech inside
Navtex	Shipmate RS 6100 Navtex
AIS transponder	Raymarine AIS700 Class B
Radio receiver	Lowe HF-150 SSB receiver
Navigation lights	with full controls for all navigation lights

EQUIPMENT

Sprayhood	Large blue sprayhood 1x summer and 1x winter
Cockpit cover	1x summer and 1x winter
Cockpit cushions	white sky cushions for main cockpit and aft cockpit
Cockpit table	yes
Bathing platform	Fold-out Hydraulic remote controlled
Boarding ladder	yes
Transom door	yes
Deck shower	At bathing platform
Anchor	CQR Plough 105 lbs
Anchor chain	30 mtr. 12mm
Anchor 2	yes
Windlass	Electric hydraulic Maxwell 3500 both up and down
Capstan	yes
Outboard support	yes
Deck crane	For outboard
Sea railing	wire
Grab rail (superstructure)	teak
Railing side opening gates	On both sides



Pushpit	yes
Pulpit	yes
Life raft	container Plastimo
Life raft (pers)	container 4 persons
Last life raft survey	2024
Danbuoy	yes
Safety lines on deck	yes
Horn	New 2024
Fenders	yes
Mooring lines	yes
Spare parts	yes
Radio-cd player	with separate equalizer
Surround Sound System	Hifi stereosystem
Cockpit speakers	2x
Speakers in salon	4x with 2 amplifiers
Clock - barometer	yes
Fire extinguisher	4x

RIGGING

Rigging	sloop
Standing rigging	Rod new 2017
Brand mast	Marechal
Material mast	aluminium
Spreaders	3 pair
Keel stepped mast	Marechal 3 spreader keel-stepped mast finished in white painted aluminium
Mainsail	North sails Spectra 80m² new 2022
Mainsail cover	2x Park Avenue boom
Fully battened mainsail	yes
Genoa II	North Sails Tri-radial Genua 2 109m²
Genoa furler	Reckmann Hydraulic



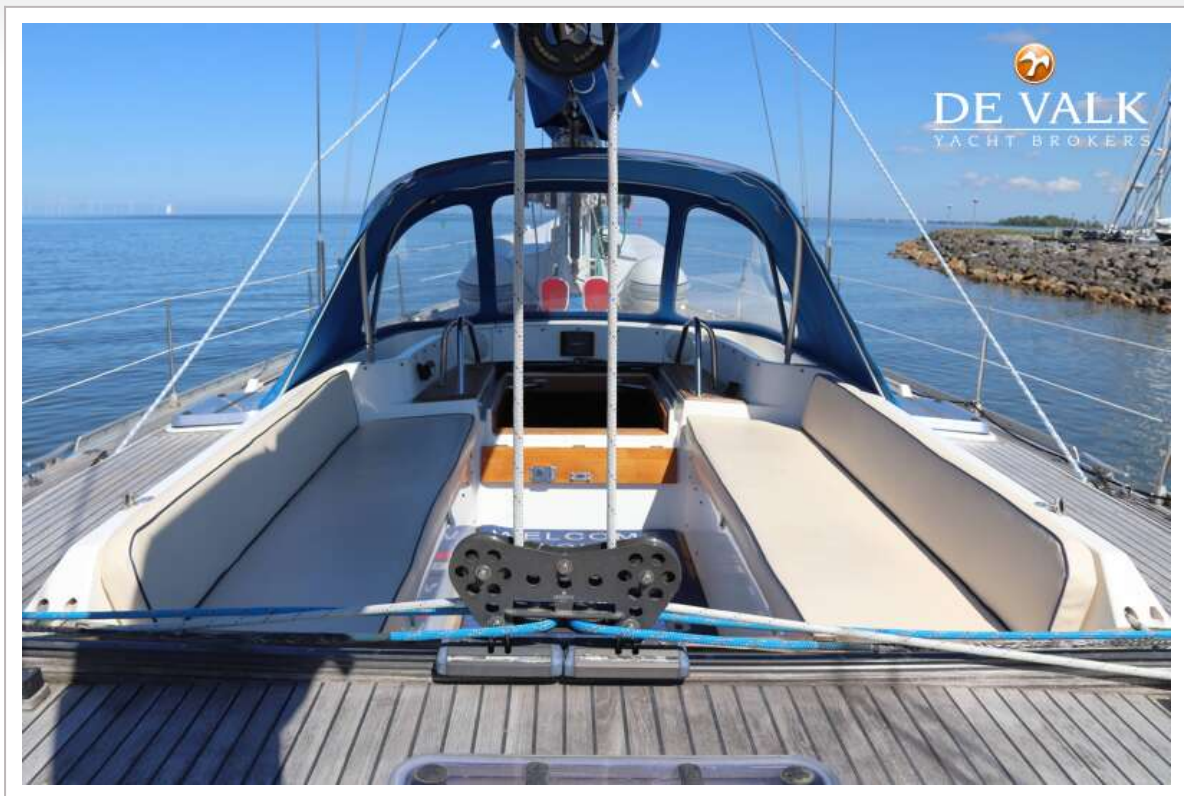
Genoa cover	yes
Gennaker	North Sails Tri-radial (240m²) with snuffer
Spinnaker	North Sails Tri-radial (280m²)
Staysail	North Sails Tri-radial (43m²)
Staysail furler	Harken MKII
Yankee	North Sails Tri-radial (87m²) with cover
Removable innerforestay	Babystay with hydraulic navtec tensioner
Backstay adjuster	hydraulic Navtec
Boomvang	hydraulic Navtec
Primary sheet winch	2 x Harken type 642 electric hydraulic 2 speed
Secondary sheet winch	2 x Harken type 56-2 2 speed selftailing secondary sheetwinches
Halyard winches	On mast
Winchcovers	yes
Spi-pole	carbon
Extra info	All sails made by North in Spectra ore Norlam
Extra info	Measurements: I=23,5 mtr, P=21,4 mtr, J=6,9 mtr, E=6,8 mtr.



CENTURION 59

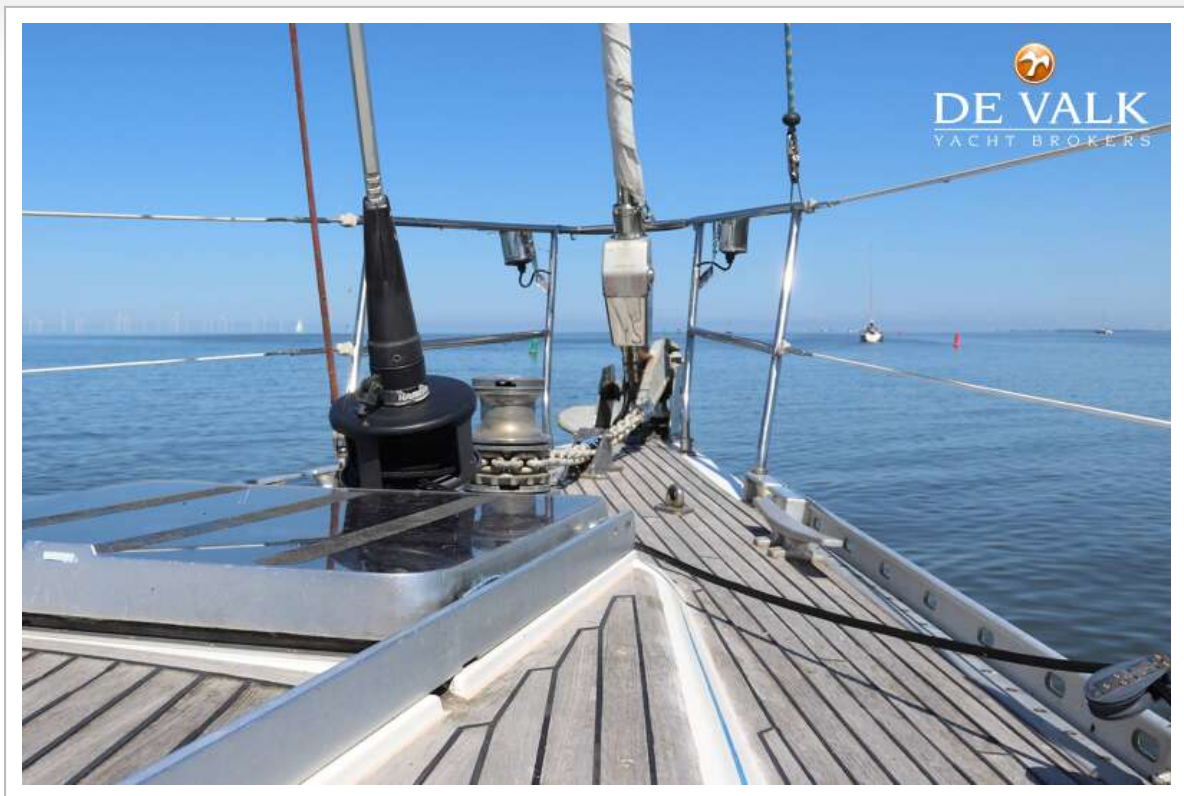


CENTURION 59



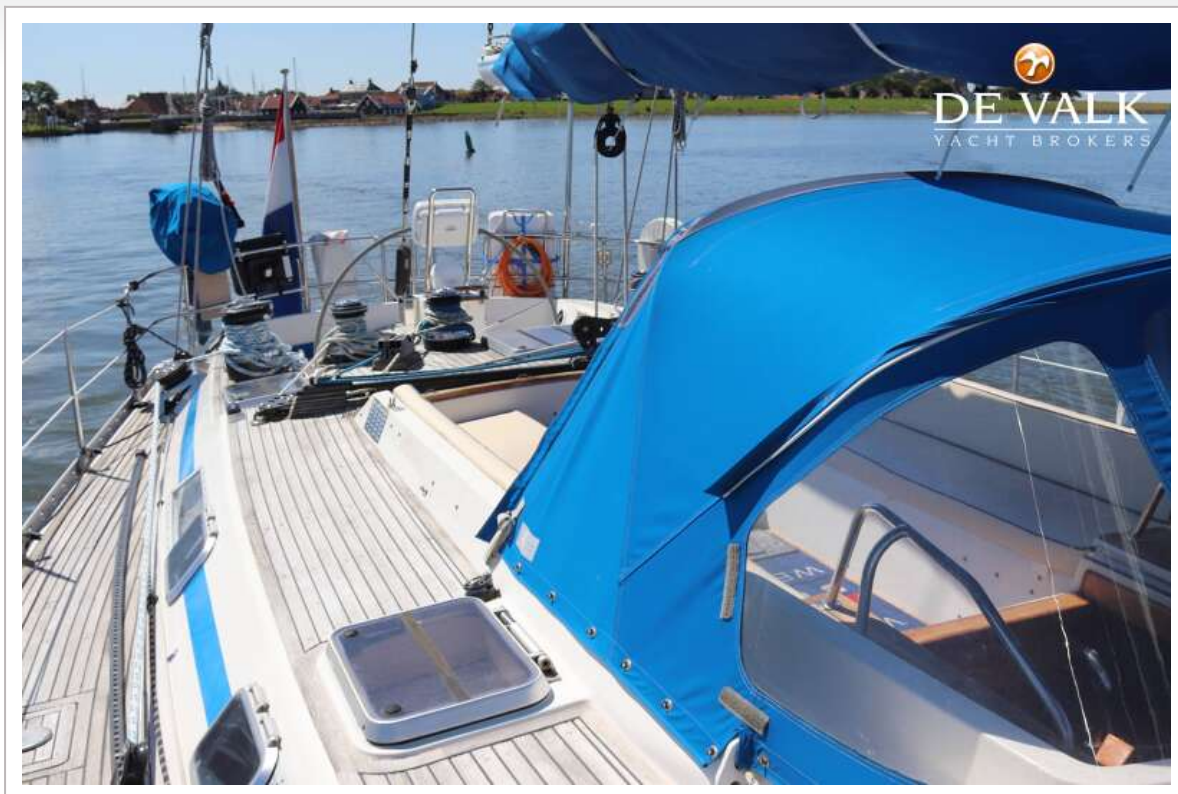
CENTURION 59







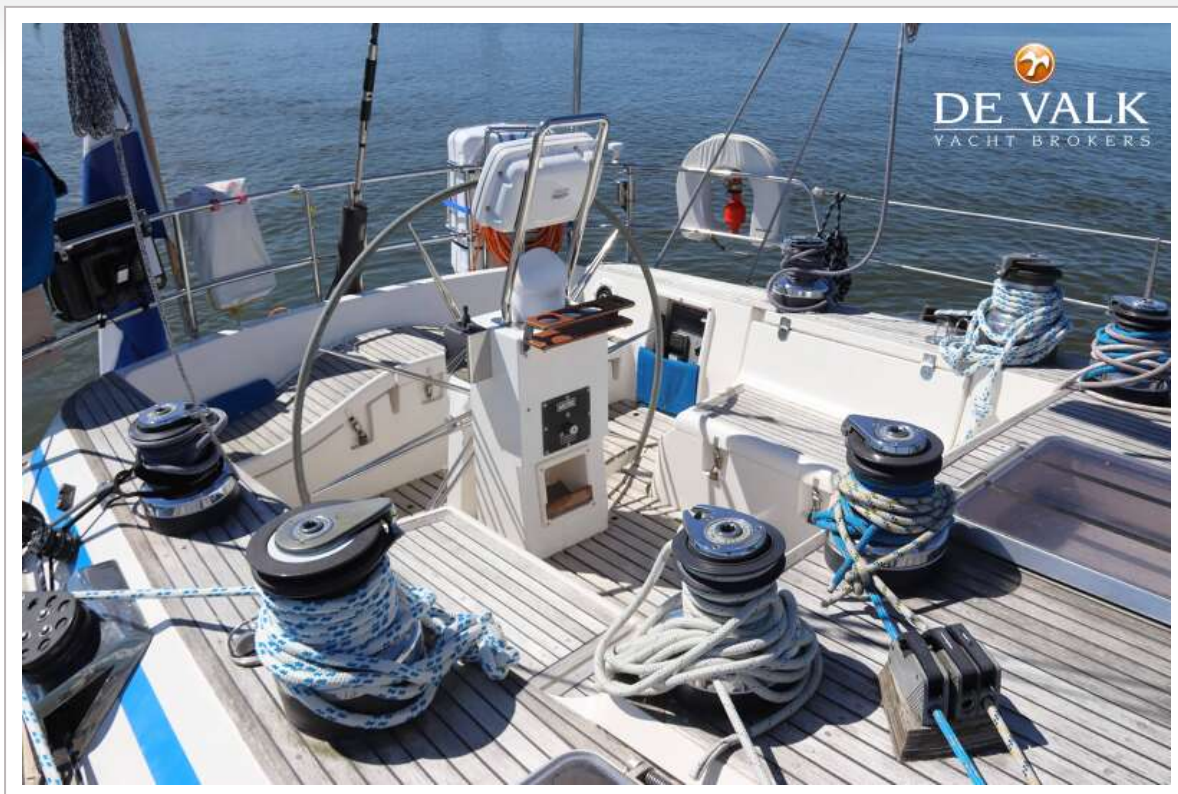
CENTURION 59



CENTURION 59



CENTURION 59

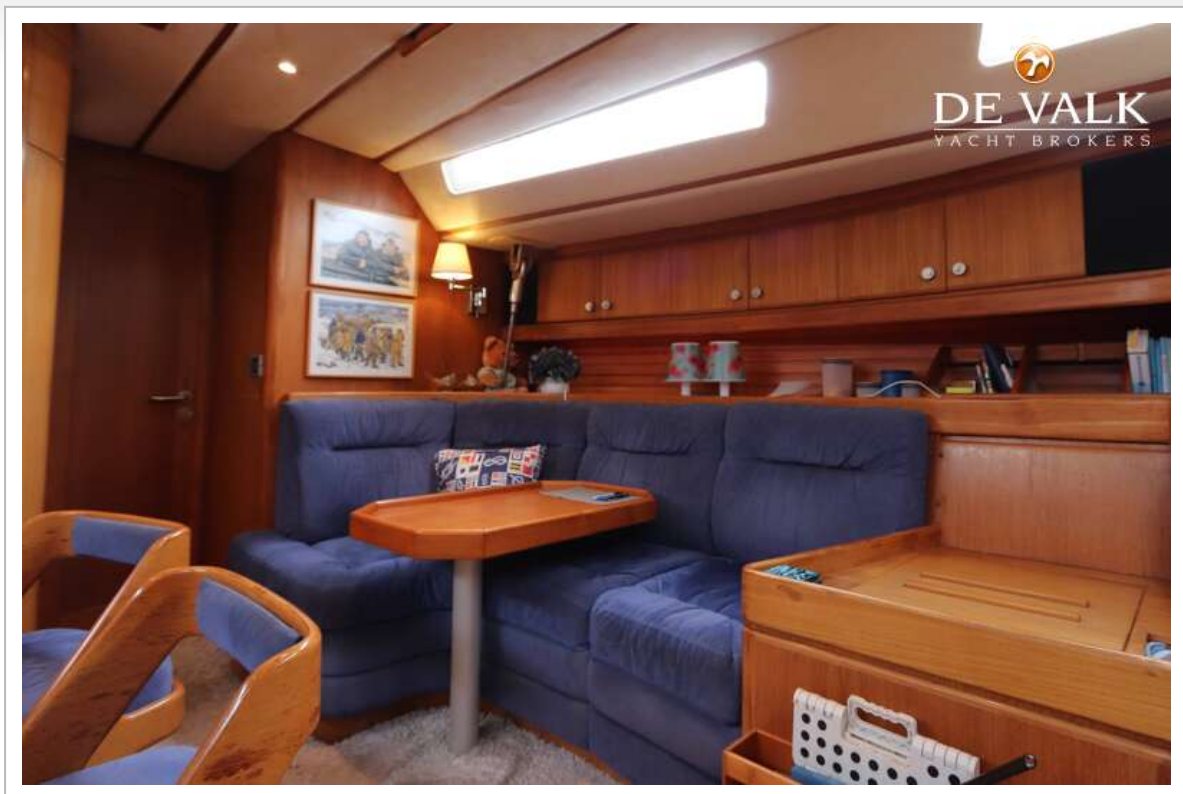


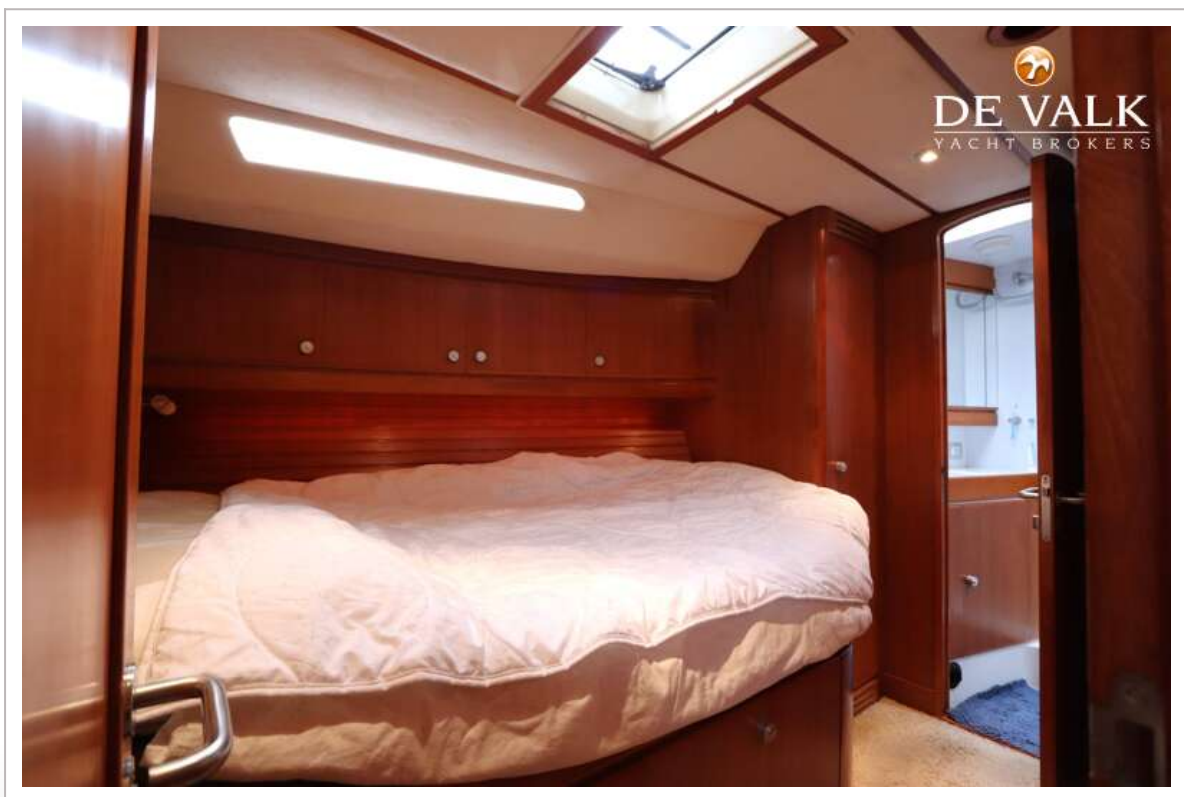
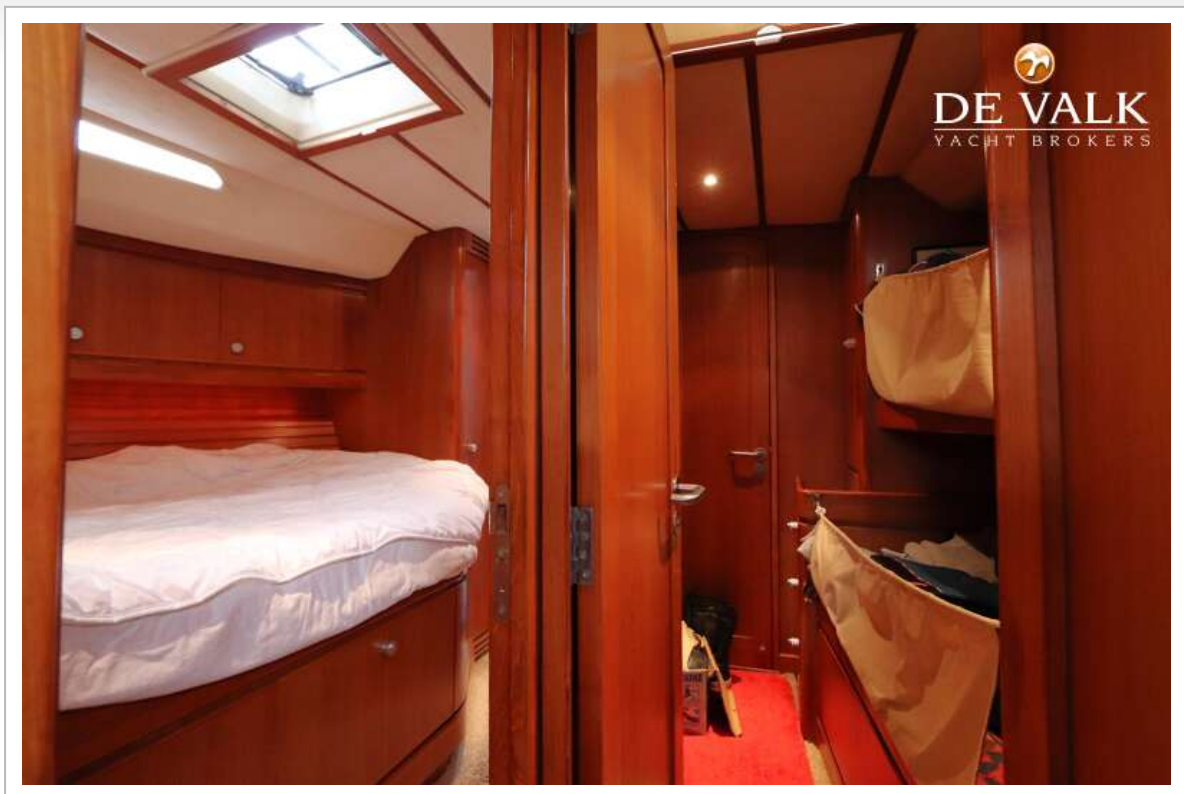


CENTURION 59



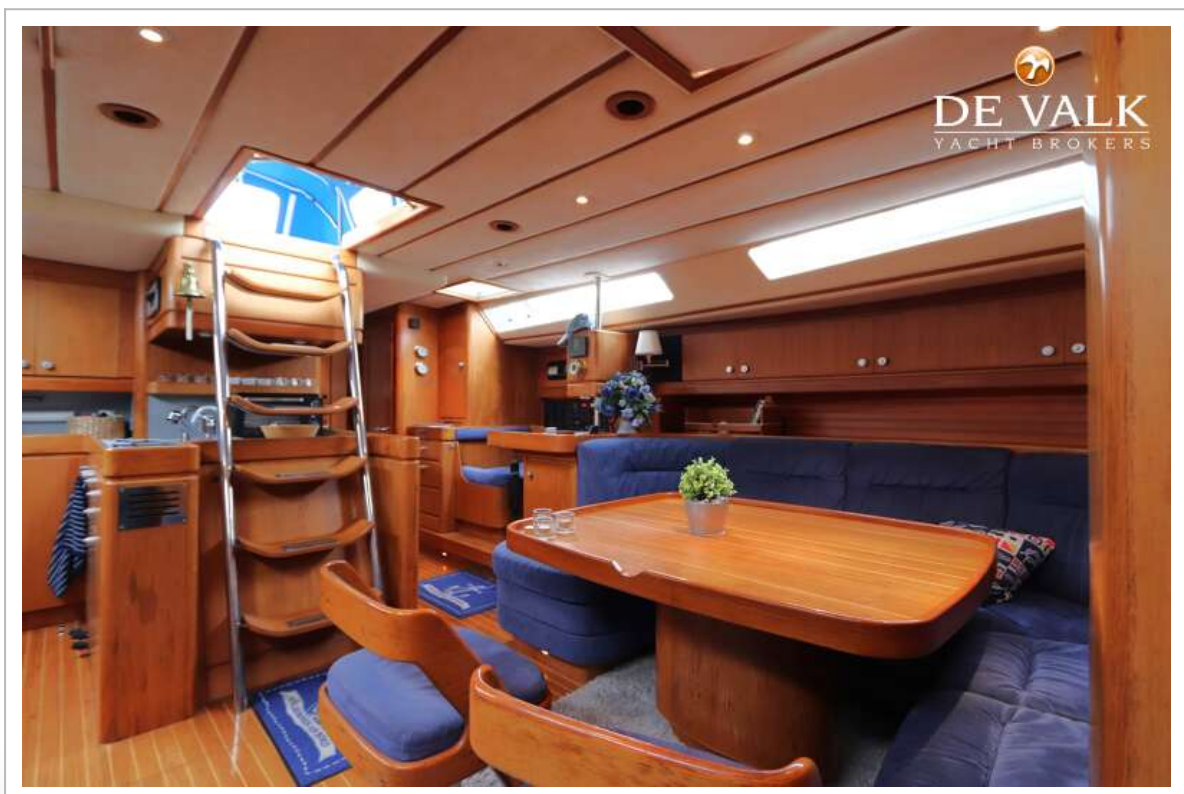








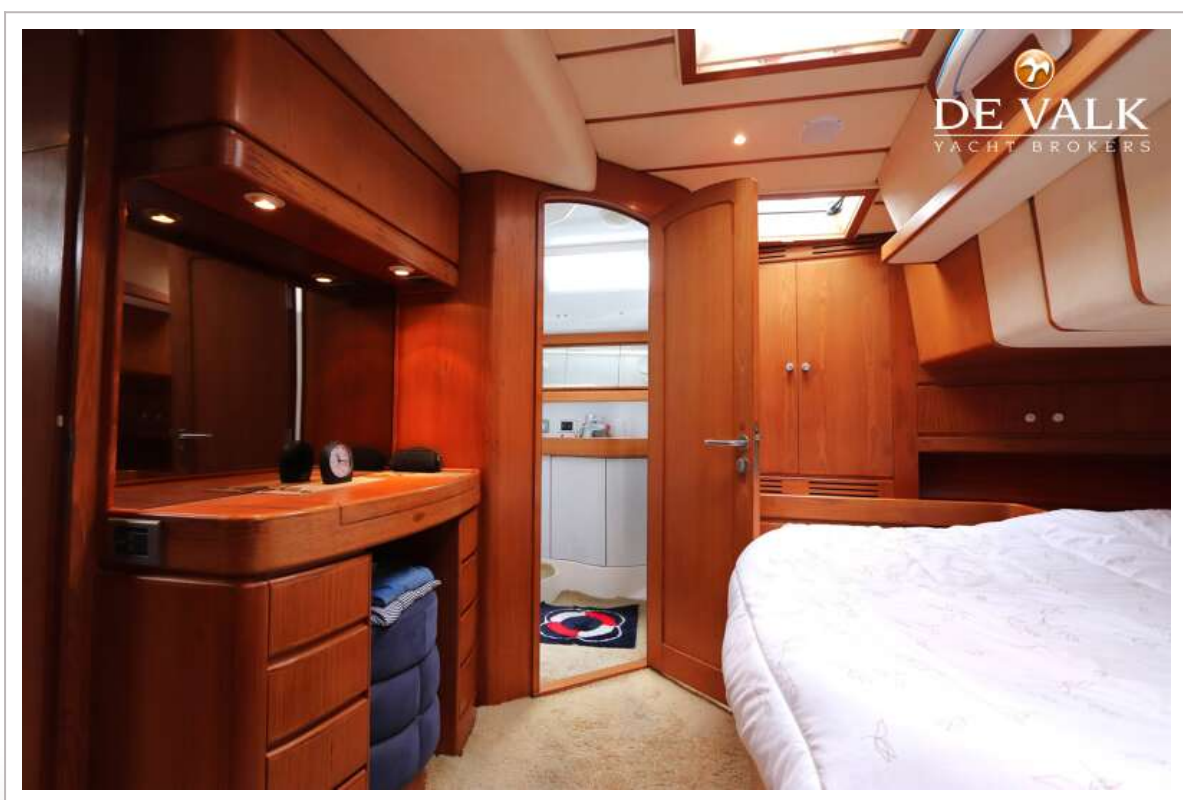
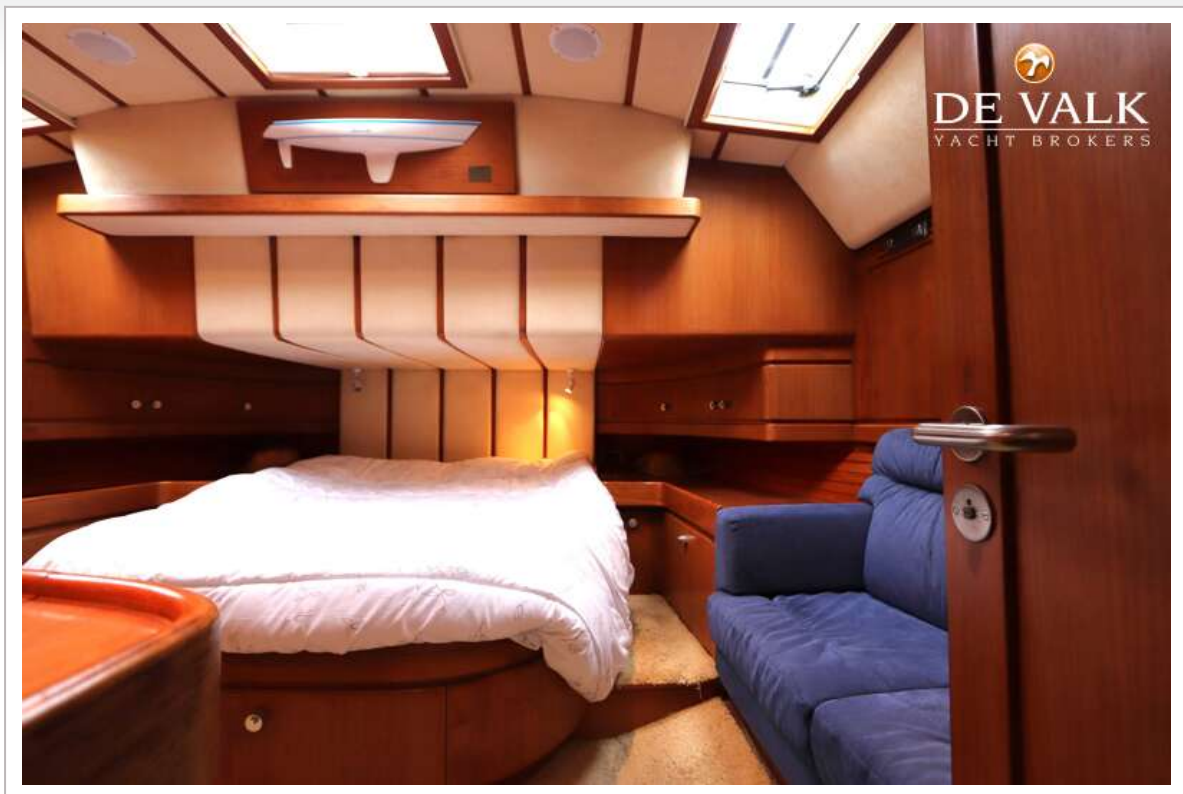
CENTURION 59

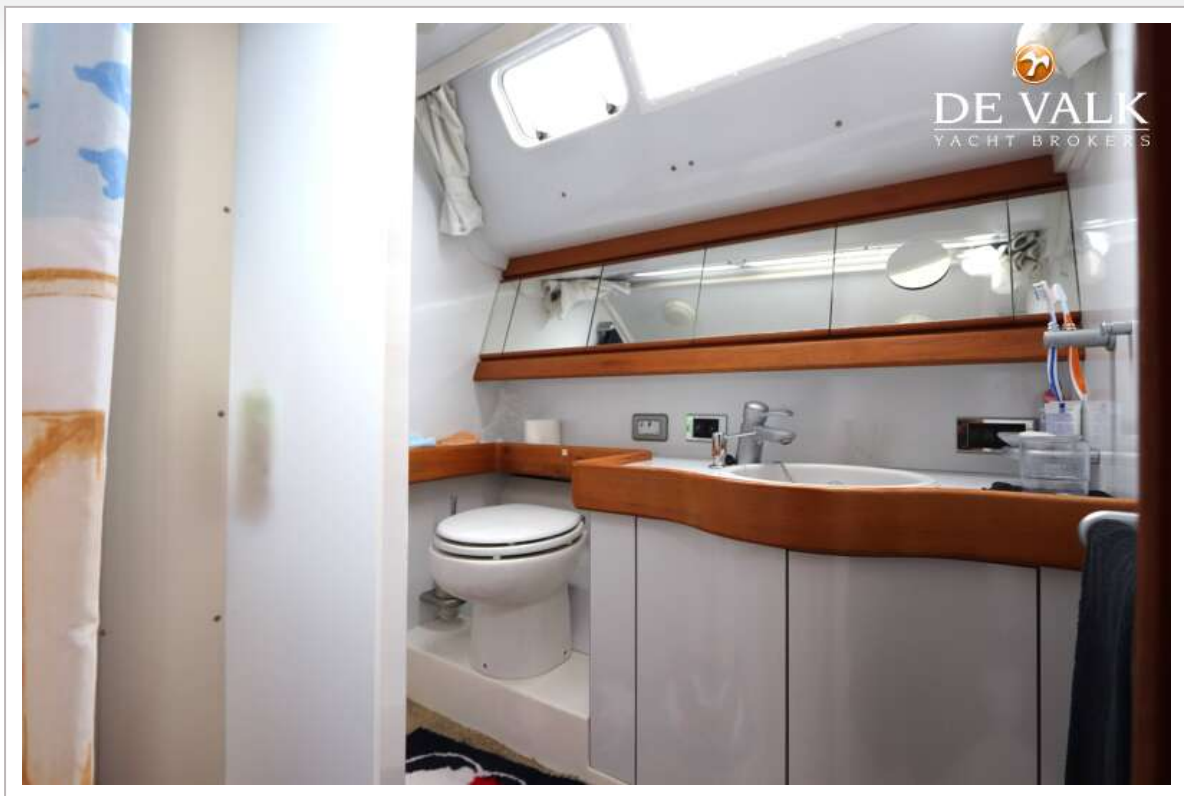


CENTURION 59



CENTURION 59





CENTURION 59

