



GRAND BANKS 42 MOTORYACHT

GRAND BANKS 42 MOTORYACHT

BROKER'S COMMENTS

True gentleman's motor yacht model from the much appreciated Grand Banks 42 range. The Grand Banks Motoryacht model offers a full beam owners cabin aft with excellent ensuite facilities. Outside the large aft deck is good result of that alteration. Also the two cabin layout makes her ideal for long distance family cruising. With her two reliable and strong Caterpillar diesels and bowthruster she is easy to handle. She is now ready for a visit with us in Sint Annaland!

Joris van de Rijt

SPECIFICATIONS

Dimensions	13.17 x 4.29 x 1.27 (m)	Builder	American Marine
Built	1992	Cabins	2
Material	GRP	Berths	4
Engine(s)	2 x Caterpillar 3116TA diesel	Hp/Kw	2 x 300.00 (hp), 220.50 (kw)
Asking price	sold (VAT)	Lying	at sales office

CONTACT

Sales office	De Valk Sint Annaland B.V.	Telephone	+31 (0)166 601 000
Address	Koelhuisweg 4 4697 RM Sint Annaland NL	E-mail	sintannaland@devalk.nl

DISCLAIMER

These particulars are given in good faith as supplied but cannot be guaranteed.



GRAND BANKS 42 MOTORYACHT

GENERAL

Model	GRAND BANKS 42 MOTORYACHT
Type	motor yacht
LOA (m)	13,17
LWL (m)	12,53
Beam (m)	4,29
Draft (m)	1,27
Air draft (m)	4,17
Air draft min (m)	3,80
Headroom (m)	2,02
Year built	1992
Launched	1993
Builder	American Marine
Country	Singapore
Displacement (t)	15,9
Hull material	GRP
Hull colour	white
Hull shape	deep-V
Superstructure material	GRP
Rubbing strake	stainless steel
Deck material	GRP
Deck finish	teak
Superstructure deck finish	teak
Antifouling (year)	03-2022
Window frame	wood
Window material	glass
Deckhatch	3 x
Flybridge	yes
Flybridge cockpit cover	For flybridge console
Radar arch	collapsible
Mast can be lowered	manual



GRAND BANKS 42 MOTORYACHT

Fuel tank (litre)	steel 2271 in two tanks
Level indicator (fuel tank)	yes
Freshwater tank (litre)	steel 910 in two tanks
Blackwater tank (litre)	steel
Blackwater tank extraction	deck extraction + pump
Wheel steering	cable steering
Inside helm position	yes
Flybridge helm position	cable steering

ACCOMMODATION

Cabins	2
Berths	4
Interior	teak
Floor	teak
Aft deck	yes
Pilot house/deck saloon	With twin entrance doors
Headroom saloon (m)	2,02
Heating	central heating Webasto
Aft Cabin	yes
Dinette	yes
Galley	yes
Countertop	plastic
Sink	stainless steel
Cooker	electric Bosch 4 burner
Microwave	Brandt 1250 Watt
Fridge	Waeco with freezer compartment
Hot water system	220V + engine
Water pressure system	electrical
Dishwasher	Carad (not working)
Owners cabin	French bed
Bed length (m)	2,05 x 1,55



GRAND BANKS 42 MOTORYACHT

Wardrobe	hanging/drawers/shelves
Bathroom	en suite I
Toilet	en suite
Toilet system	electric
Wash basin	at the toilet
Shower	en suite
Guest cabin 1	v-bed
Bed length (m)	2,05
Wardrobe	hanging/drawers/shelves
Bathroom	shared II
Toilet	shared
Toilet system	electric
Wash basin	in the bathroom
Shower	shared
Flybridge	yes

MACHINERY

No of engines	2
Make	Caterpillar
Type	3116TA
HP	300
kW	220,50
Fuel	diesel
Year installed	1992
Maximum speed (kn)	yes
Range (nm)	yes
Engine hours	3521
Engine cooling system	freshwater heat exchanger
Drive	shaft
Engine controls	bowden cable
Gearbox	2 x Twin Disc MG 5061-A



GRAND BANKS 42 MOTORYACHT

Bowthruster	electric Vetus
Propeller type	fixed
Propeller blades	4
Propeller shaft material	stainless steel
Shaft lubrication	water
Electric bilge pump	yes
Electrical installation	12/220 V
Generator	Onan 6.5 KVA
Running hours generator	269
Start battery	2 x
Service battery	2 x
Generator battery	1 x
Battery charger	Mastervolt charge master 12/70/3
Inverter	Sinergex 500 for TV accessories
Shorepower	with cable
Trimtabs	(not working)

NAVIGATION

Compass	Danforth
Compass on flybridge	Danforth
Depth sounder	2 x Raymarine st 60
VHF	Icom ic M505
VHF handheld	Simrad HT50
Autopilot	Robertson ap 200DL
Radar	Furuno
Radar/GPS/plotter	Raymarine C120
Electronis chart(s)	yes
AIS receiver	Raymarine
Navigation lights	yes

EQUIPMENT



GRAND BANKS 42 MOTORYACHT

Fixed windscreen	On flybridge
Bimini	yes
Cockpit cushions	For flybridge
Bathing platform	yes
Boarding ladder	stainless steel
Deck shower	yes
Anchor	CQR Plough
Anchor chain	yes
Windlass	electrical Lofrans falcon 1500 watt with capstan
Deck wash	yes
Davits	(not installed)
Davits controls	manual
Sea railing	teak
Grab rail (superstructure)	stainless steel
Railing side opening gates	2 x
Life raft (pers)	container 6 (needs service)
Lifebuoy	yes
Wiper	3 x (starboard wiper defect)
Horn	
Fenders	yes
Mooring lines	yes
TV	LG
Speakers in salon	(not connected, functionality unknown)
Clock - barometer	yes
Fire extinguisher	Needs to be checked/replaced



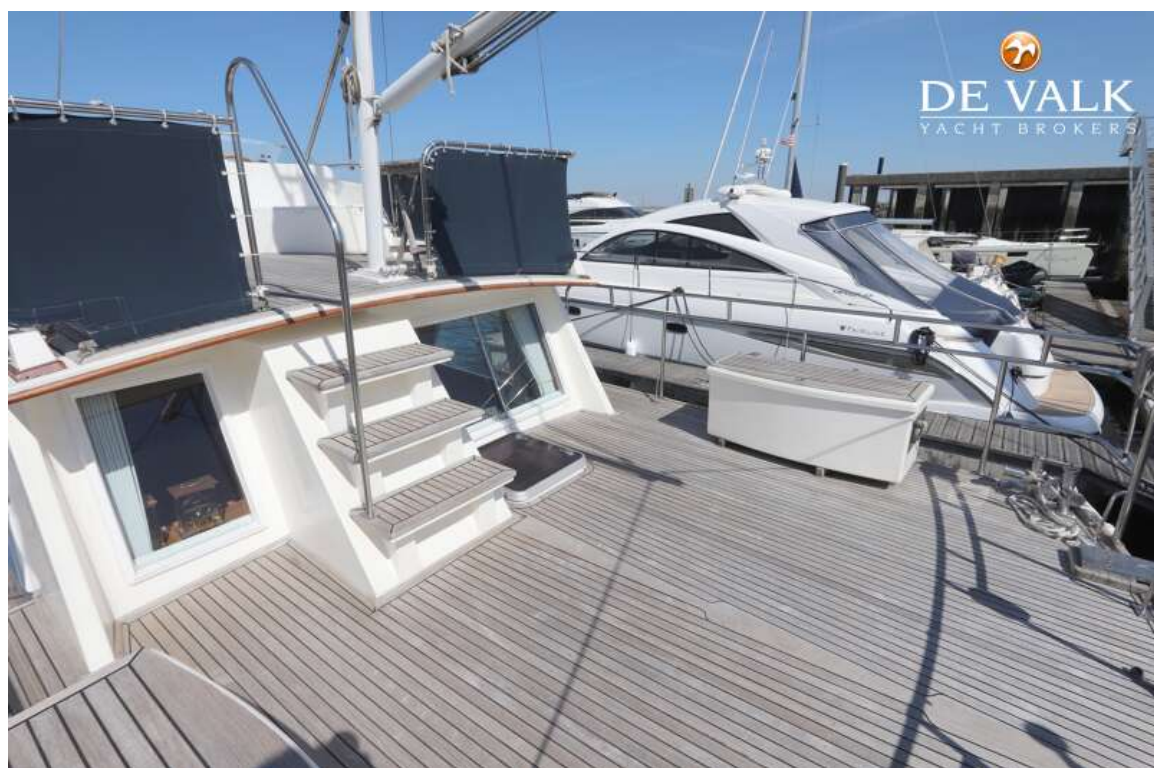
GRAND BANKS 42 MOTORYACHT



GRAND BANKS 42 MOTORYACHT



GRAND BANKS 42 MOTORYACHT



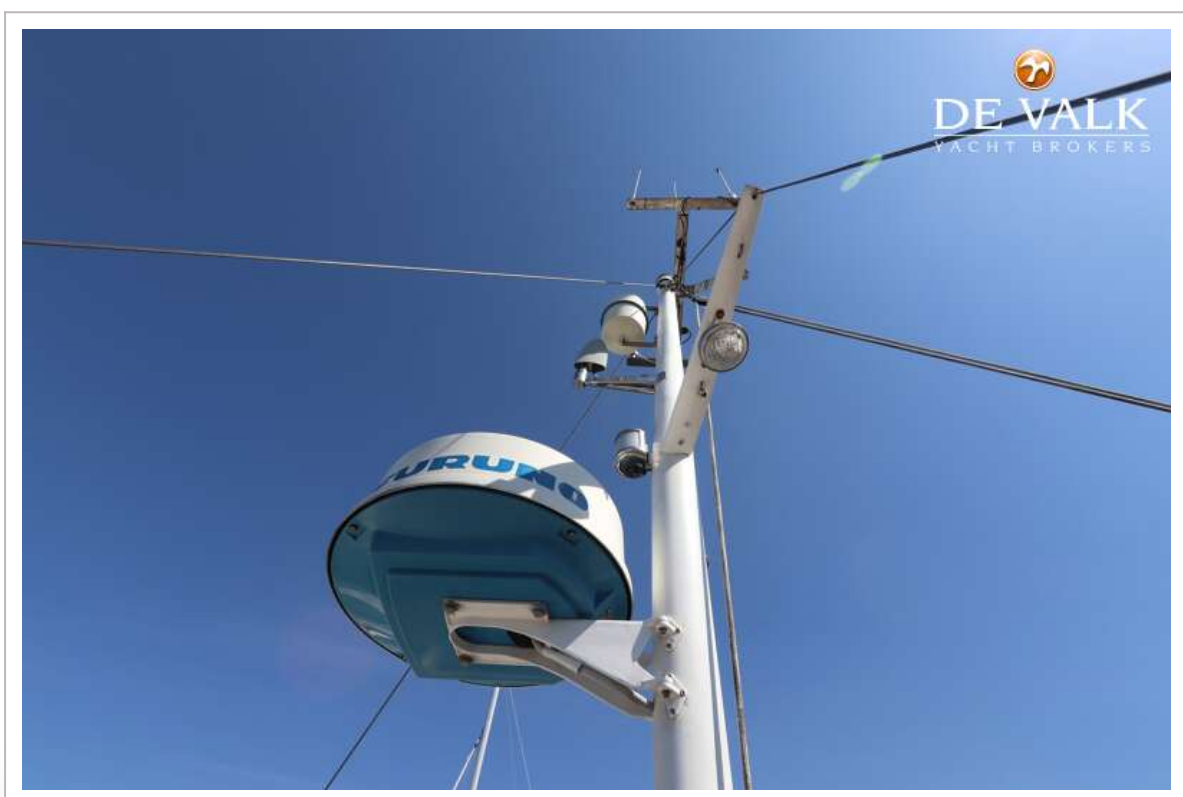
GRAND BANKS 42 MOTORYACHT



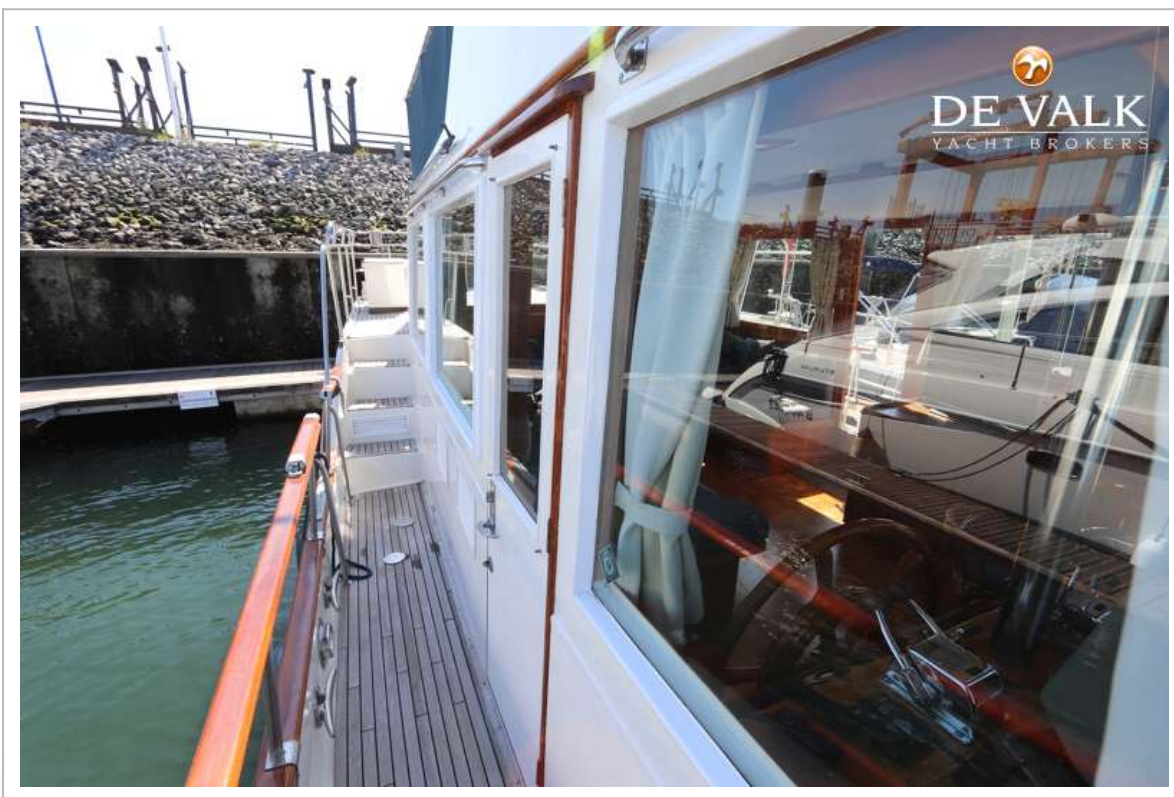
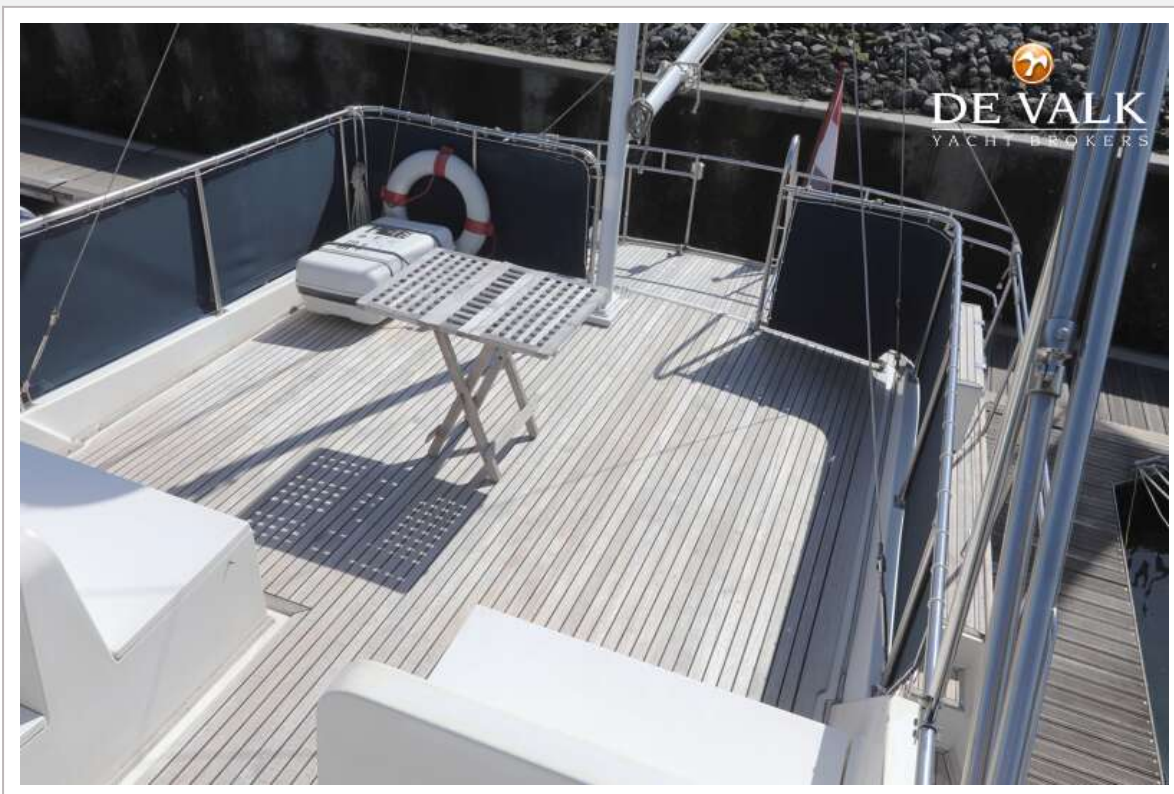
GRAND BANKS 42 MOTORYACHT



GRAND BANKS 42 MOTORYACHT



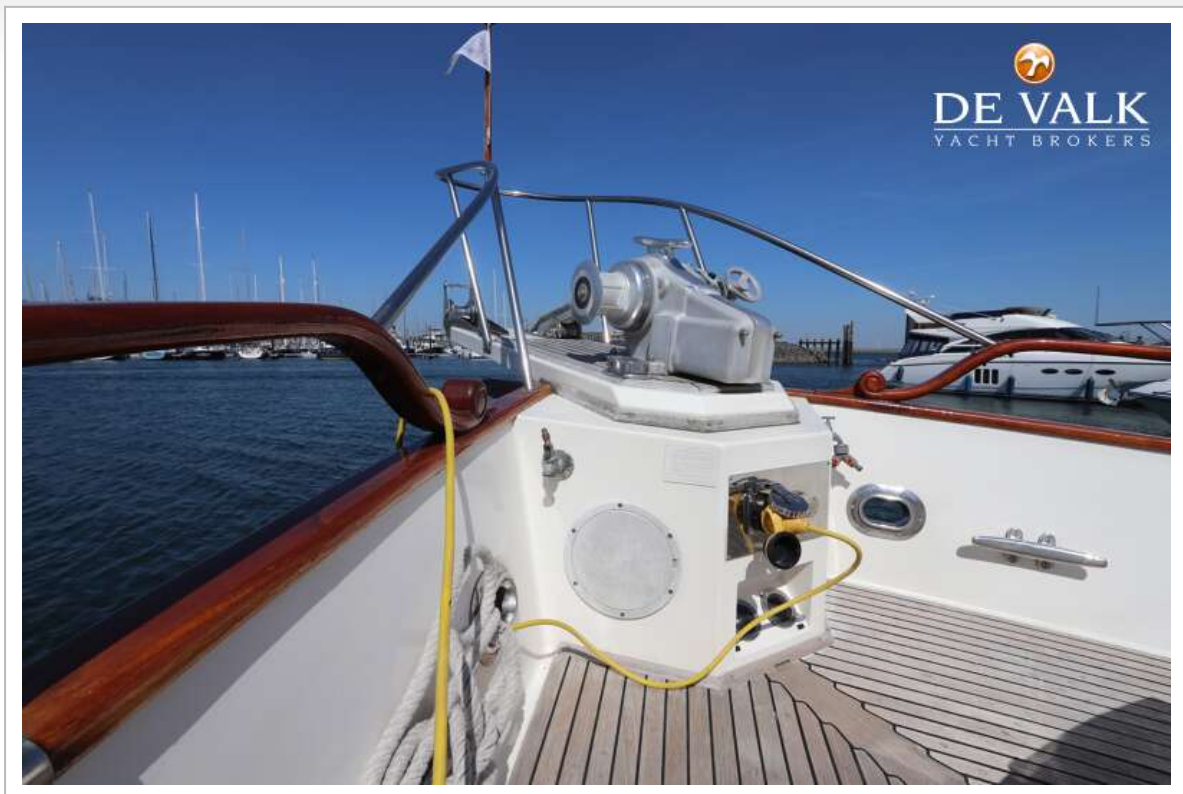
GRAND BANKS 42 MOTORYACHT



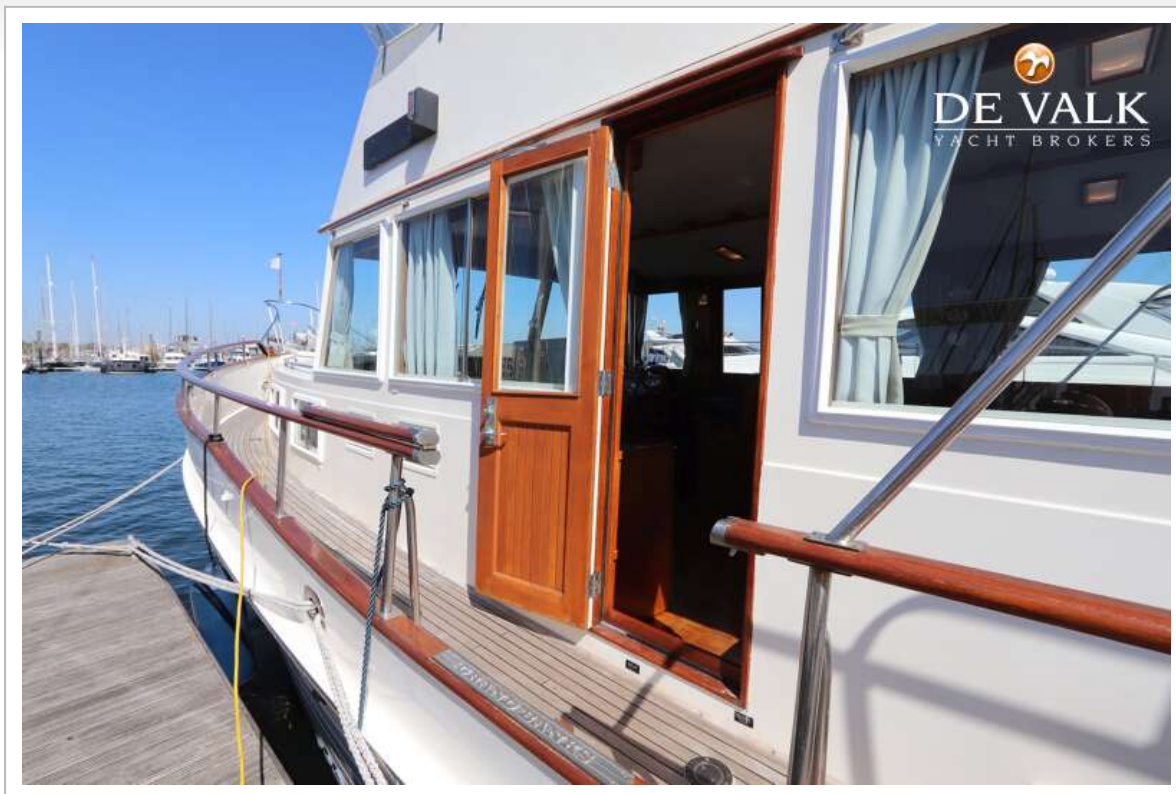
GRAND BANKS 42 MOTORYACHT



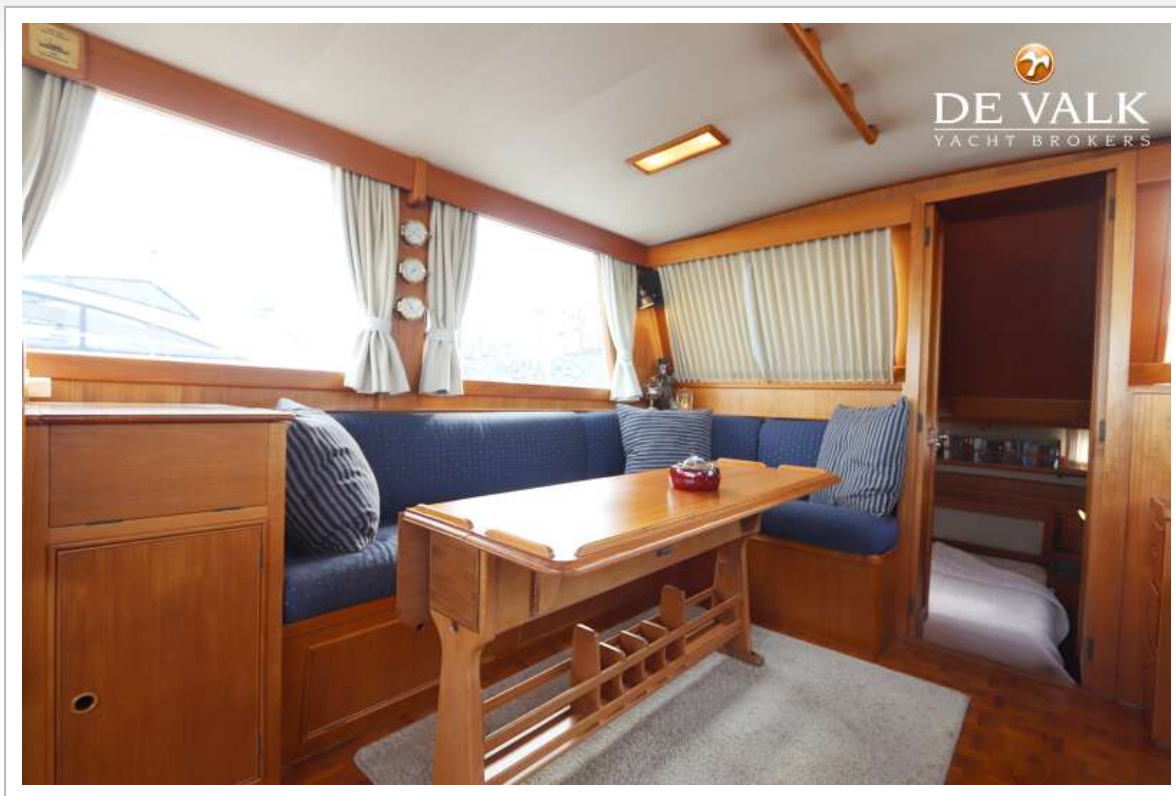
GRAND BANKS 42 MOTORYACHT



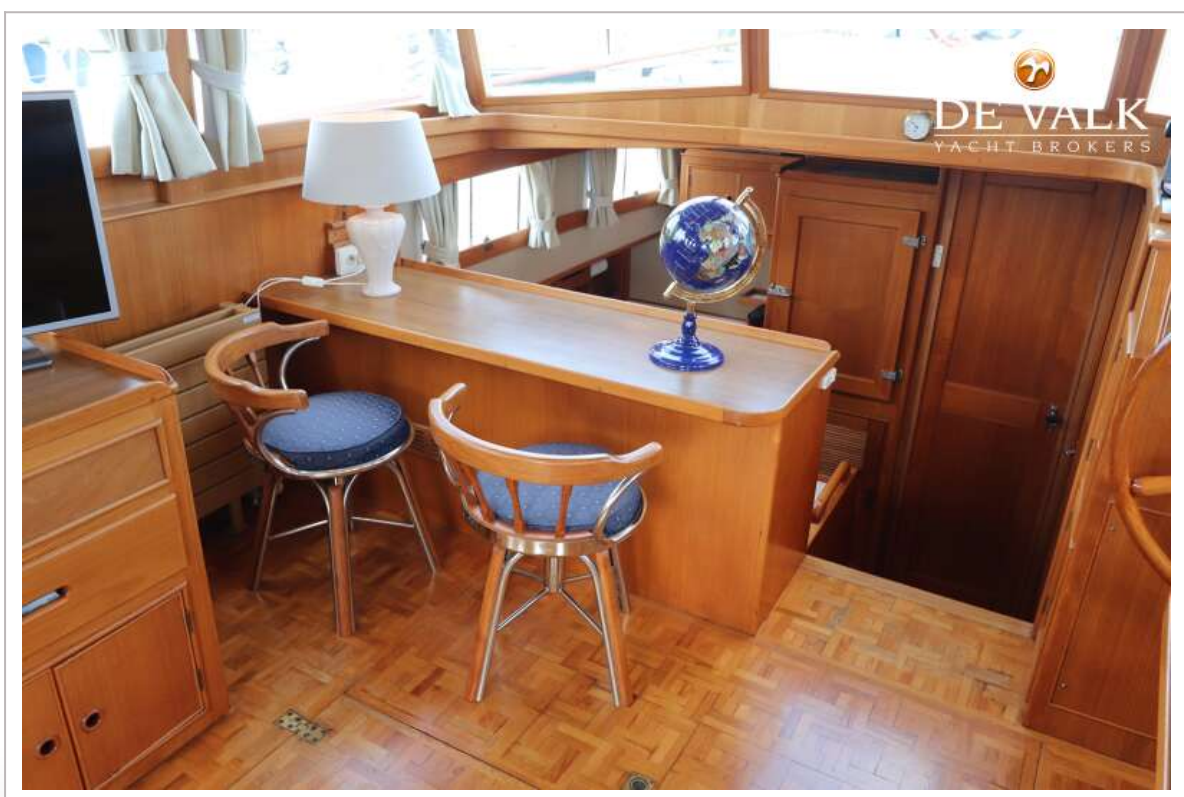
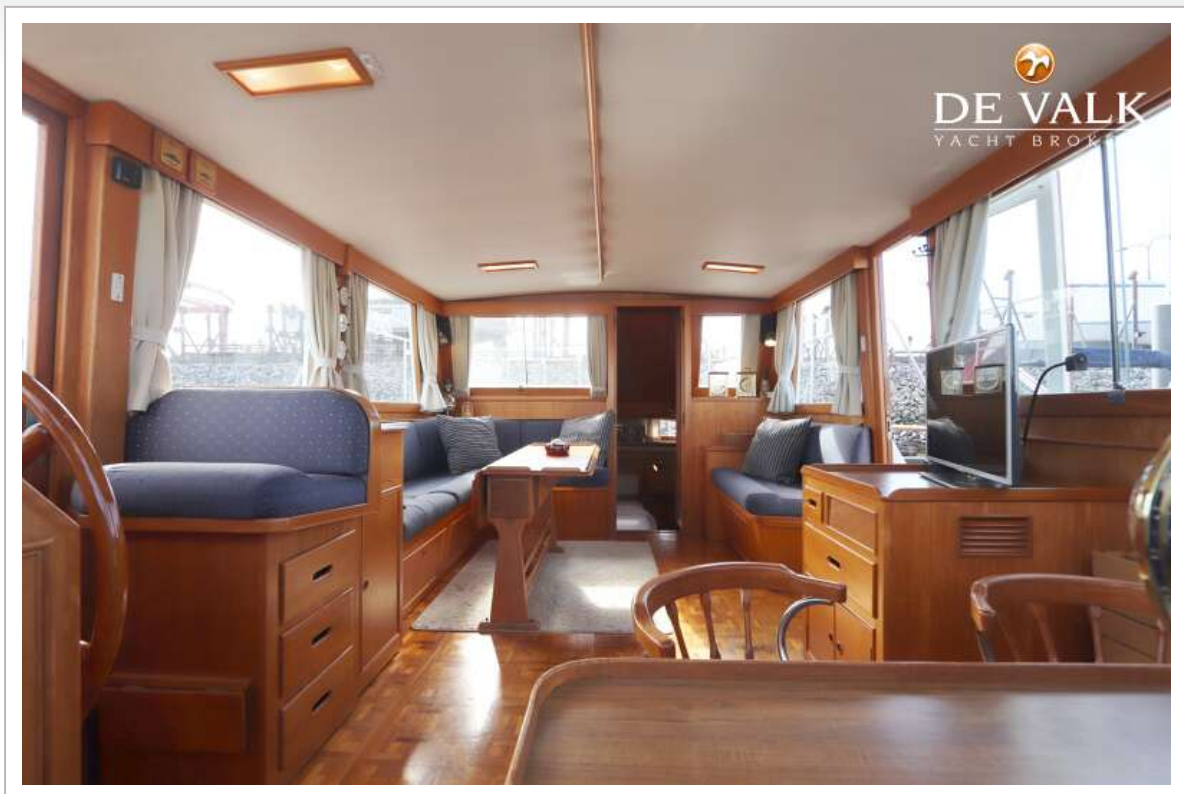
GRAND BANKS 42 MOTORYACHT



GRAND BANKS 42 MOTORYACHT



GRAND BANKS 42 MOTORYACHT



GRAND BANKS 42 MOTORYACHT



GRAND BANKS 42 MOTORYACHT



GRAND BANKS 42 MOTORYACHT



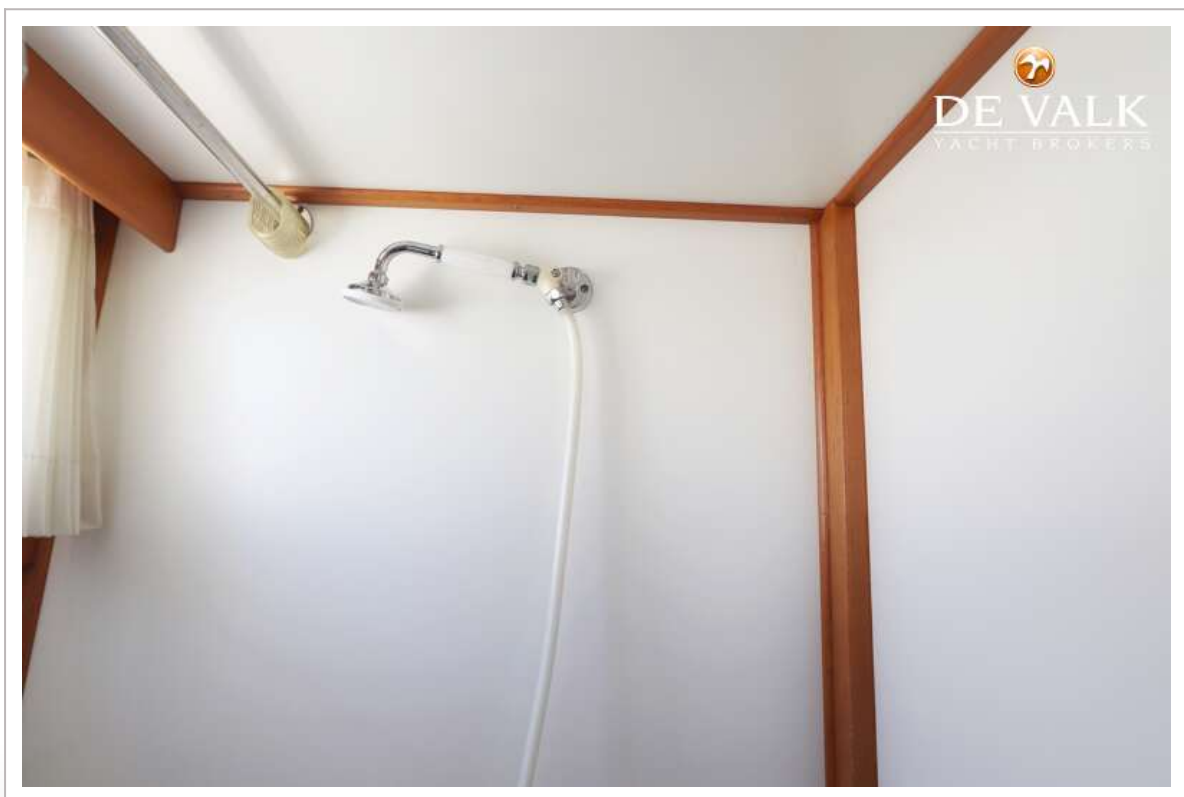
GRAND BANKS 42 MOTORYACHT



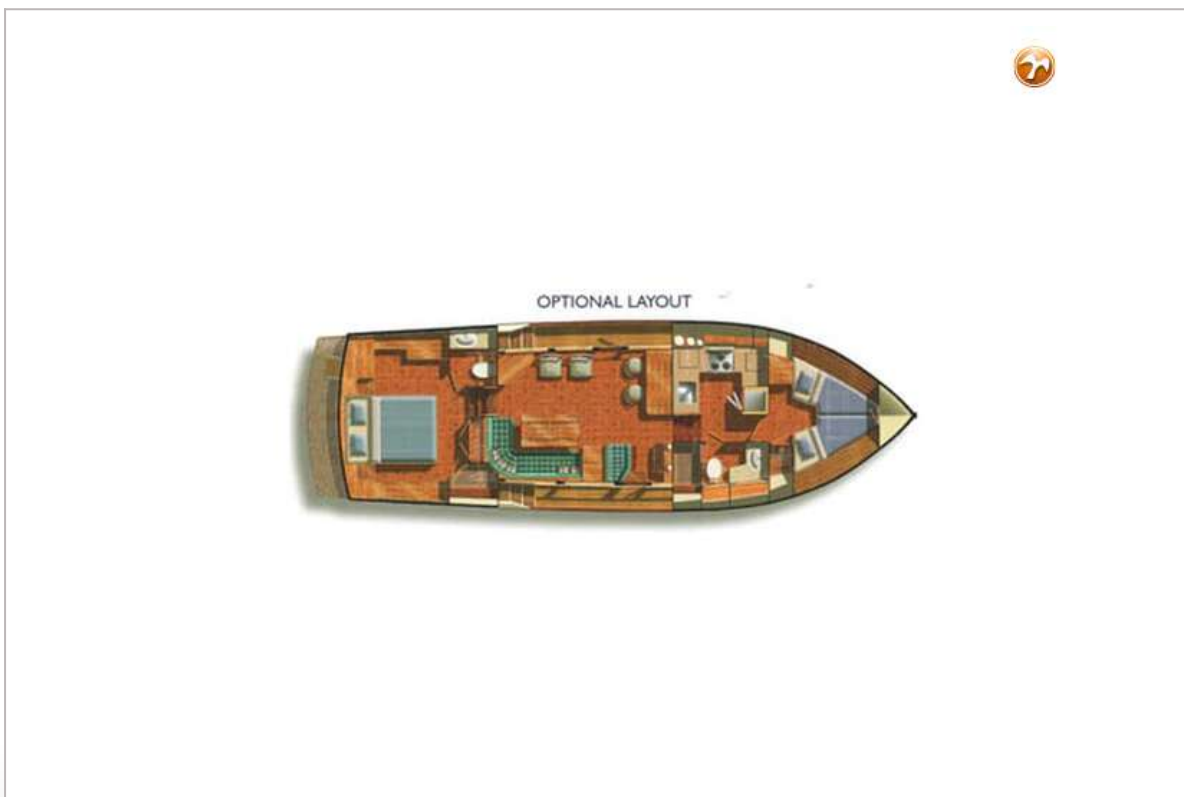
GRAND BANKS 42 MOTORYACHT



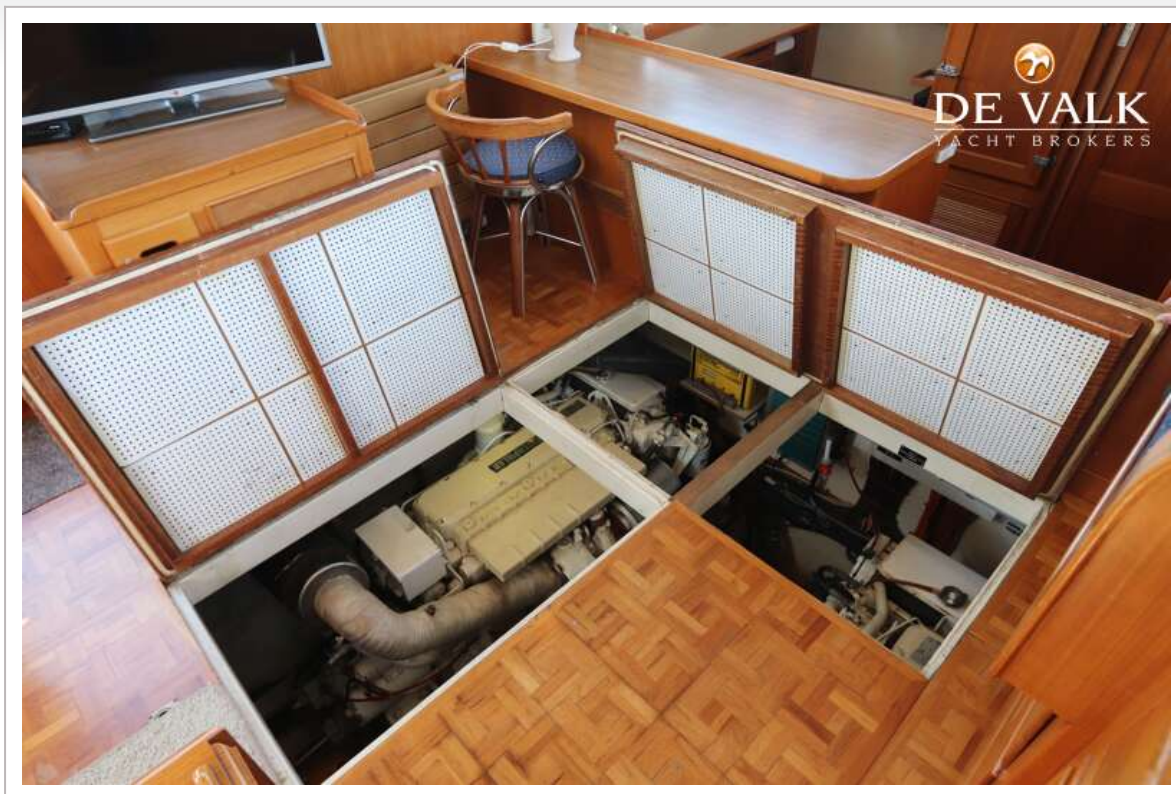
GRAND BANKS 42 MOTORYACHT



GRAND BANKS 42 MOTORYACHT



GRAND BANKS 42 MOTORYACHT



GRAND BANKS 42 MOTORYACHT

