



GRAND BANKS 46 CLASSIC

GRAND BANKS 46 CLASSIC

BROKER'S COMMENTS

This Grand Banks 46 Classic is very complete equipped with i.a. two Caterpillar diesel engines and electric bow thruster with RMC control. This model is in a two cabins and two bathroom lay-out equipped. You are very welcome to make an appointment to visit the yacht.

Mark Hesselmans

SPECIFICATIONS

Dimensions	14.35 x 4.50 x 1.33 (m)	Builder	Grand Banks
Built	1991	Cabins	2
Material	GRP	Berths	4
Engine(s)	2 x Caterpillar 3208 TA diesel	Hp/Kw	2 x 375.00 (hp), 276.00 (kw)
Asking price	sold (VAT)	Lying	at sales office

CONTACT

Sales office	De Valk Loosdrecht B.V.	Telephone	+31 (0)35 582 90 30
Address	't Breukeleveense Meentje 6 1231LM Loosdrecht / Wijdmeren NL	E-mail	loosdrecht@devalk.nl

DISCLAIMER

These particulars are given in good faith as supplied but cannot be guaranteed.



GRAND BANKS 46 CLASSIC

GENERAL

Model	GRAND BANKS 46 CLASSIC
Type	motor yacht
LOA (m)	14,35
LWL (m)	13,65
Beam (m)	4,50
Draft (m)	1,33
Air draft (m)	8,72
Air draft min (m)	4,20
Headroom (m)	2,00
Year built	1991
Builder	Grand Banks
Country	Singapore
Displacement (t)	18
CE norm	NA
Hull material	GRP
Hull colour	white
Superstructure material	GRP
Rubbing strake	yes
Deck material	GRP
Deck finish	teak
Superstructure deck finish	teak
Cockpit deck finish	teak
Antifouling (year)	2019
Window frame	wood
Window material	glass
Deckhatch	yes
Flybridge	yes
Flybridge cockpit cover	yes
Mast can be lowered	manual
Fuel tank (litre)	2271



GRAND BANKS 46 CLASSIC

Freshwater tank (litre)	1077
Inside helm position	yes
Flybridge helm position	yes

ACCOMMODATION

Cabins	2
Berths	4
Interior	teak
Floor	yes
Saloon	yes
Headroom saloon (m)	2,00 +/-
Heating	Kabola 14Kw Elco Econom 2000
Aft Cabin	yes
Dining room	yes
Opening door to cockpit	yes
Opening door to aft deck	yes
Galley	yes
Countertop	wood
Sink	stainless steel Dubbel
Cooker	induction AEG 4 Burners
Microwave/oven combi	Samsung
Fridge	3x
Freezer	In Miele fridge
Hot water system	220V/engine/heating
Water pressure system	electrical
Owners cabin	double bed
Wardrobe	hanging/drawers/shelves
Bathroom	en suite
Toilet	en suite
Toilet system	electric
Wash basin	at the toilet



GRAND BANKS 46 CLASSIC

Shower	en suite
Guest cabin 1	v-bed
Wardrobe	hanging and drawers
Bathroom	shared
Toilet	shared
Toilet system	electric
Wash basin	in the bathroom
Shower	shared

MACHINERY

No of engines	2
Make	Caterpillar
Type	3208 TA
HP	375
kW	276
Fuel	diesel
Maximum speed (kn)	18
Cruising speed (kn)	8
Engine hours	2015
Engine cooling system	freshwater heat exchanger
Drive	shaft
Engine controls	electrical RMC with remote controle
Gearbox	hydraulic
Bowthruster	electric
Exhaust	watercooled
Propeller type	fixed
Propeller shaft material	stainless steel
Electric bilge pump	yes
Electrical installation	yes
Generator	wet exhaust Onan 7Kw
Running hours generator	645



GRAND BANKS 46 CLASSIC

Batteries	yes
Start battery	yes
Service battery	yes
Battery monitor	Victron Energy
Battery charger/inverter	Victron Quattro 3000/120/12
Shorepower	with cable
Trimtabs	yes

NAVIGATION

Compass	2x Danforth
Log	B&G
Windset	Datamarine
VHF	2x Sailor, 1 of the sailor system is defect
Autopilot	Autohelm 7000
Radar	yes
PC connection	2x 15" monitor
AIS transceiver	yes
Navigation lights	yes

EQUIPMENT

Window cover	yes
Cockpit cushions	yes
Cockpit table	yes
Bathing platform	yes
Boarding ladder	stainless steel
Anchor	yes
Windlass	electrical Lofrance
Sea railing	teak
Grab rail (superstructure)	teak
Railing side opening gates	yes
Wiper	yes



GRAND BANKS 46 CLASSIC

Horn	yes
Fenders	yes
Mooring lines	yes
TV	Samsung



GRAND BANKS 46 CLASSIC



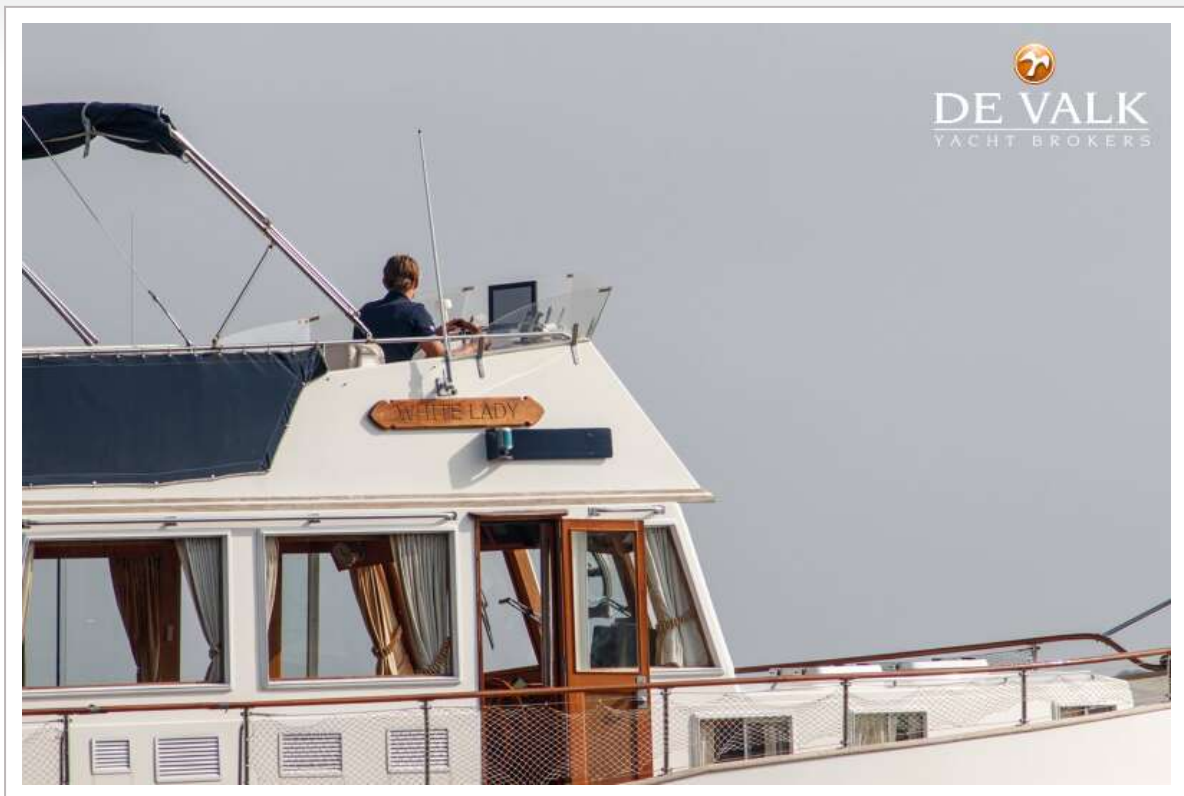
GRAND BANKS 46 CLASSIC



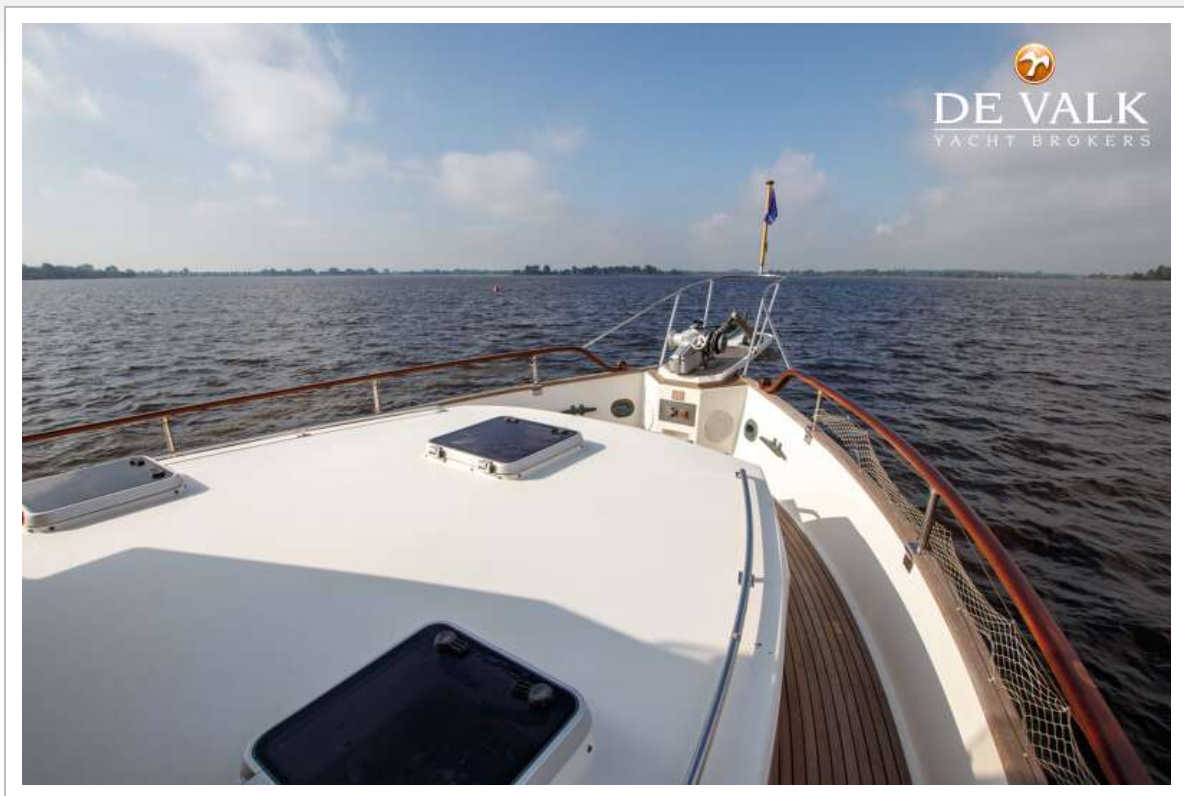
GRAND BANKS 46 CLASSIC



GRAND BANKS 46 CLASSIC



GRAND BANKS 46 CLASSIC



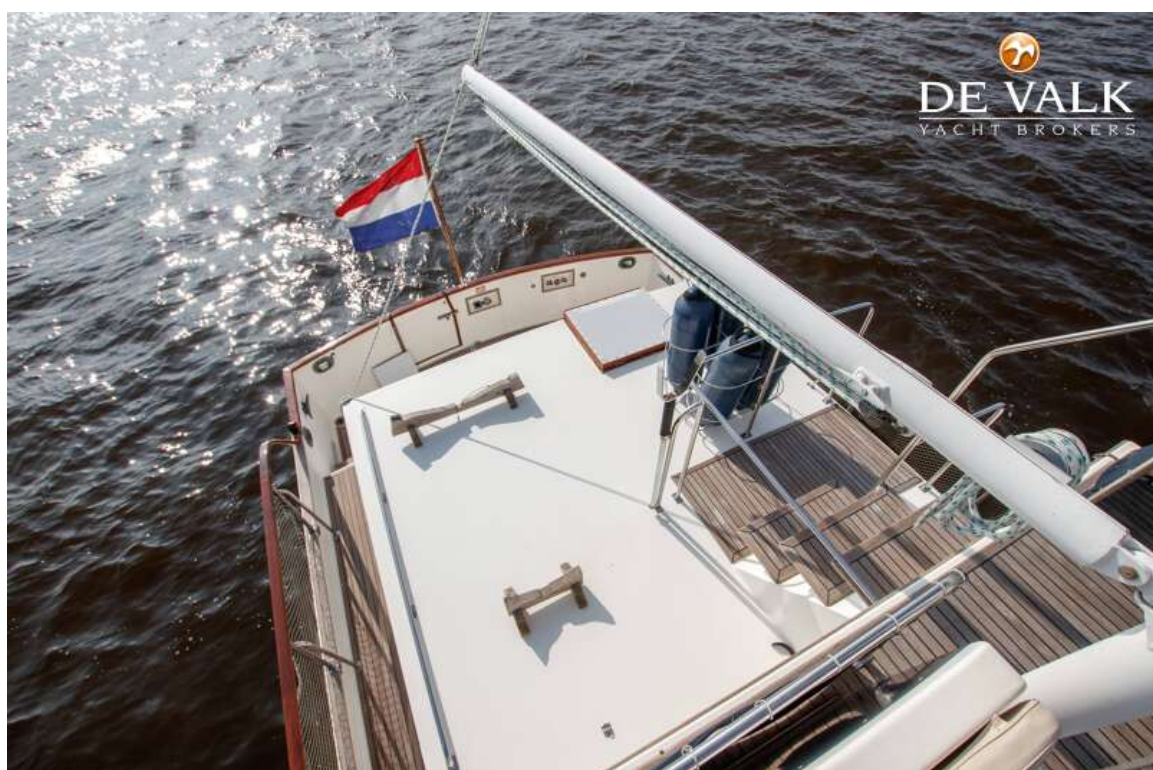
GRAND BANKS 46 CLASSIC



GRAND BANKS 46 CLASSIC



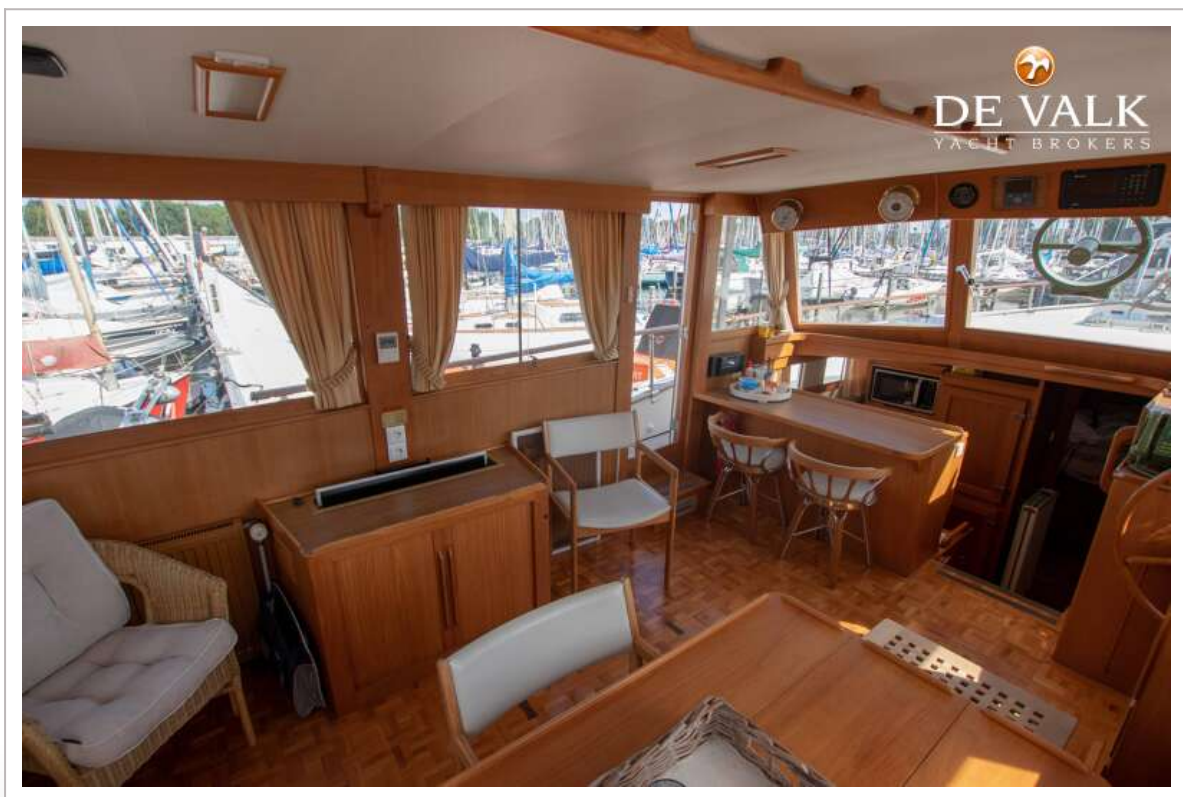
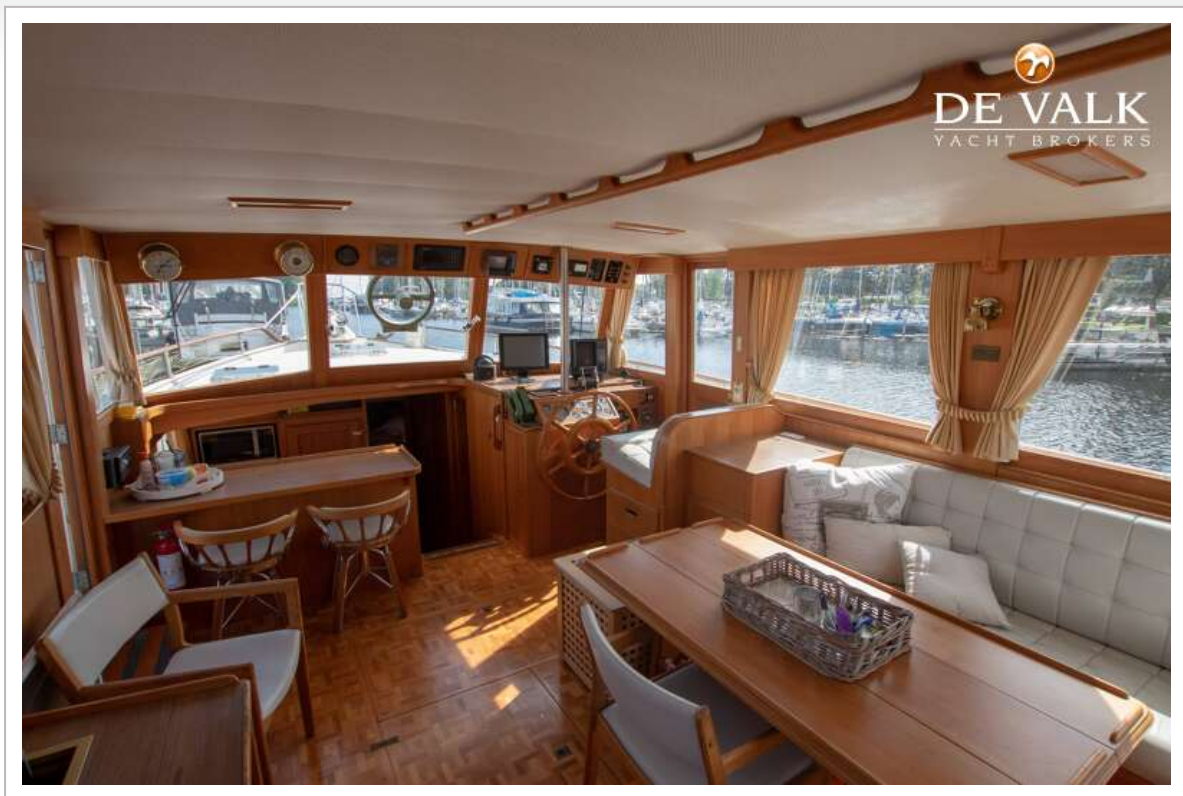
GRAND BANKS 46 CLASSIC



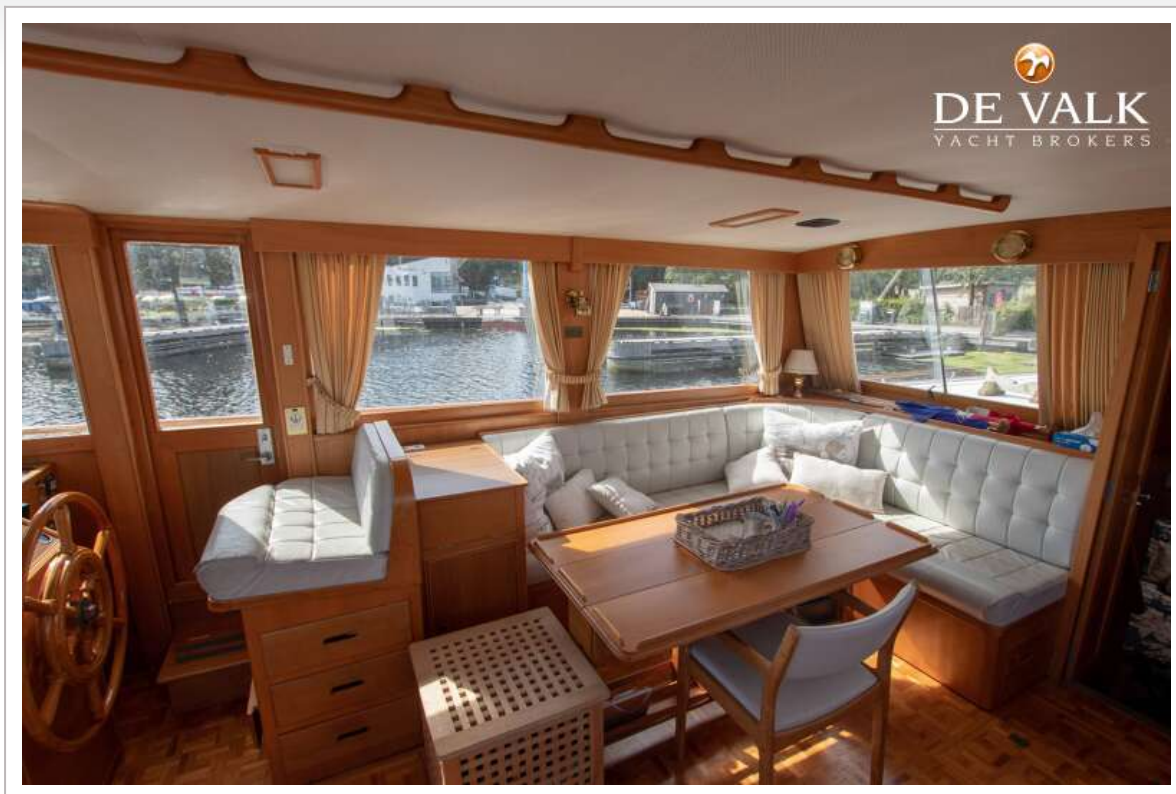
GRAND BANKS 46 CLASSIC



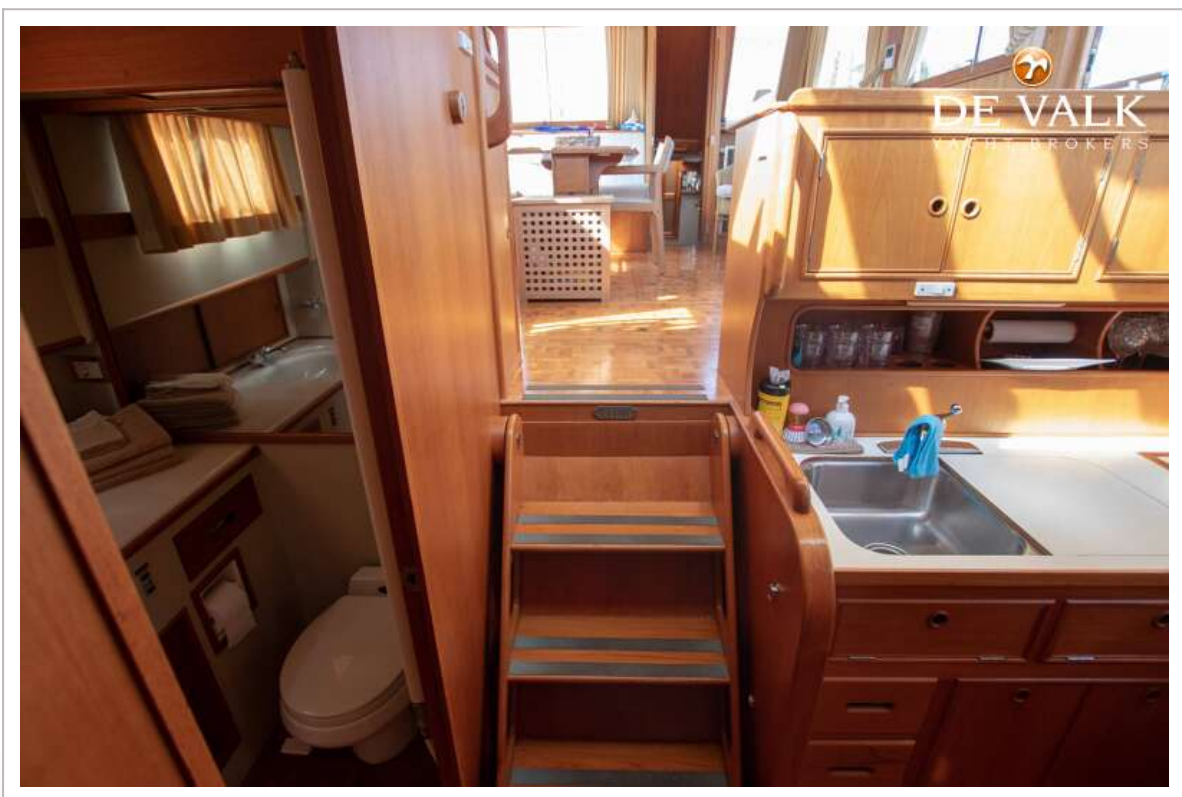
GRAND BANKS 46 CLASSIC



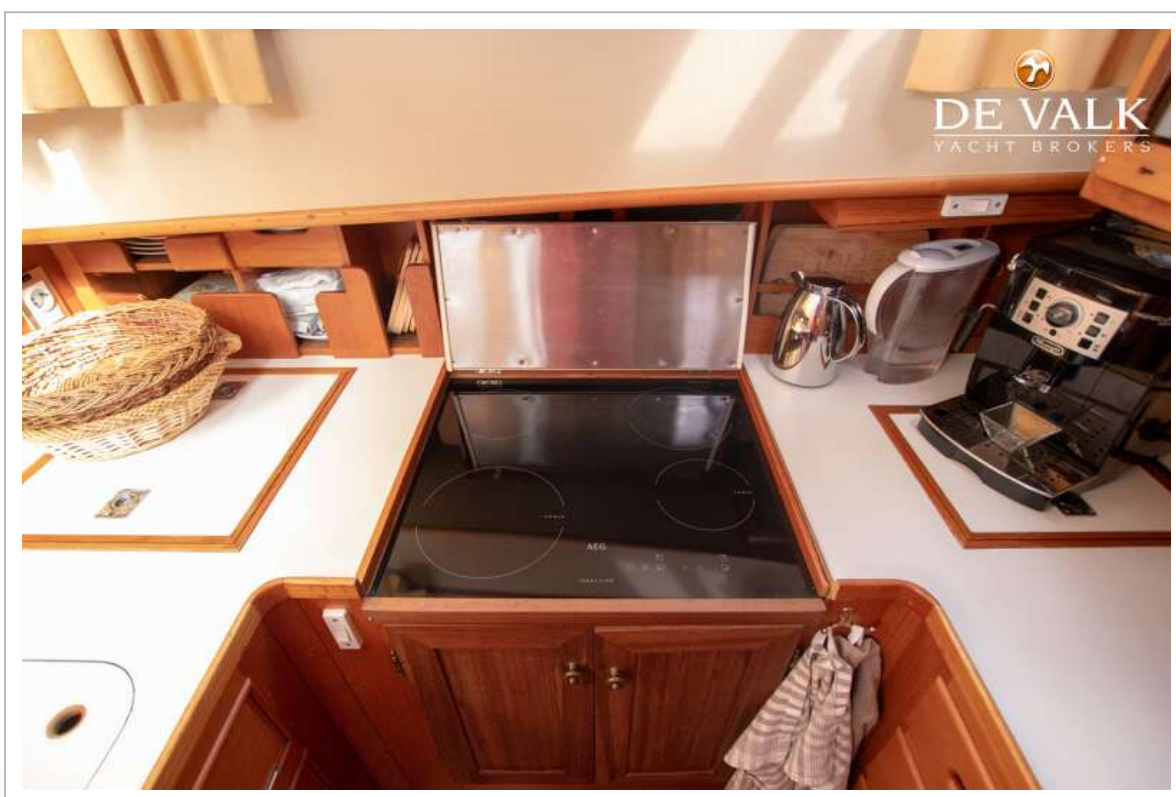
GRAND BANKS 46 CLASSIC



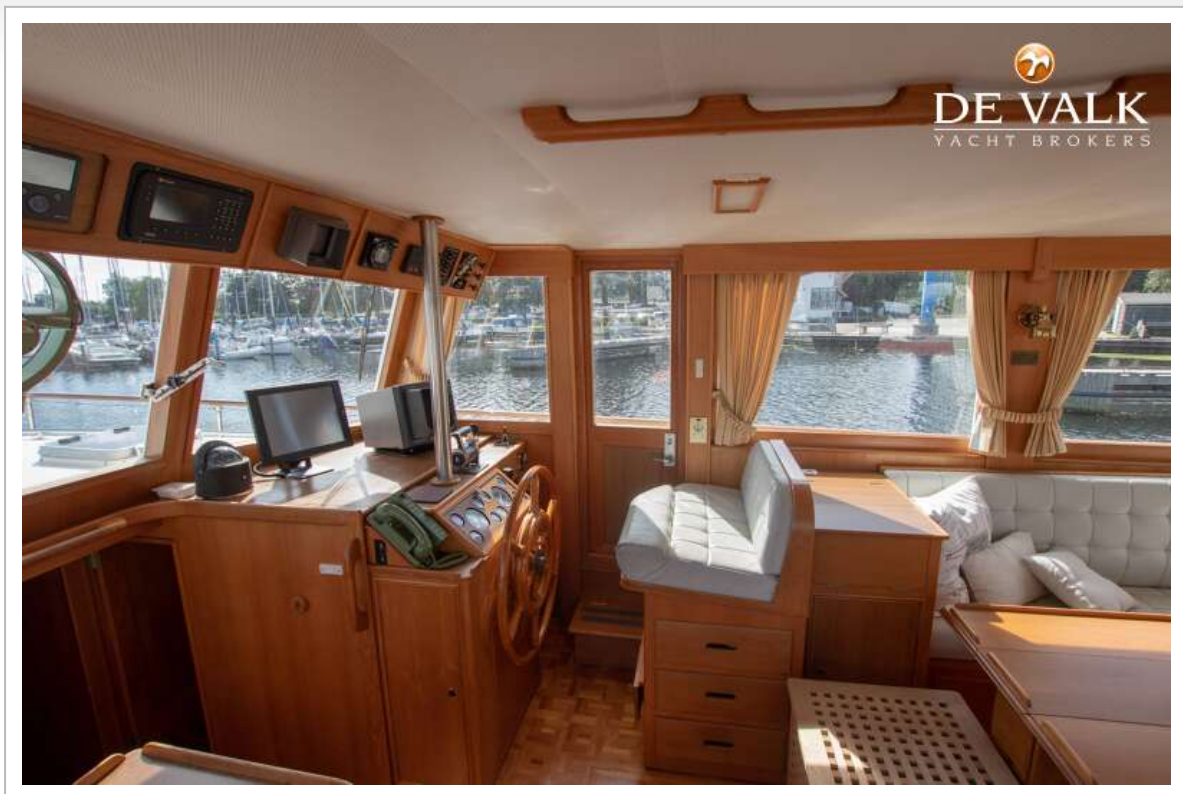
GRAND BANKS 46 CLASSIC



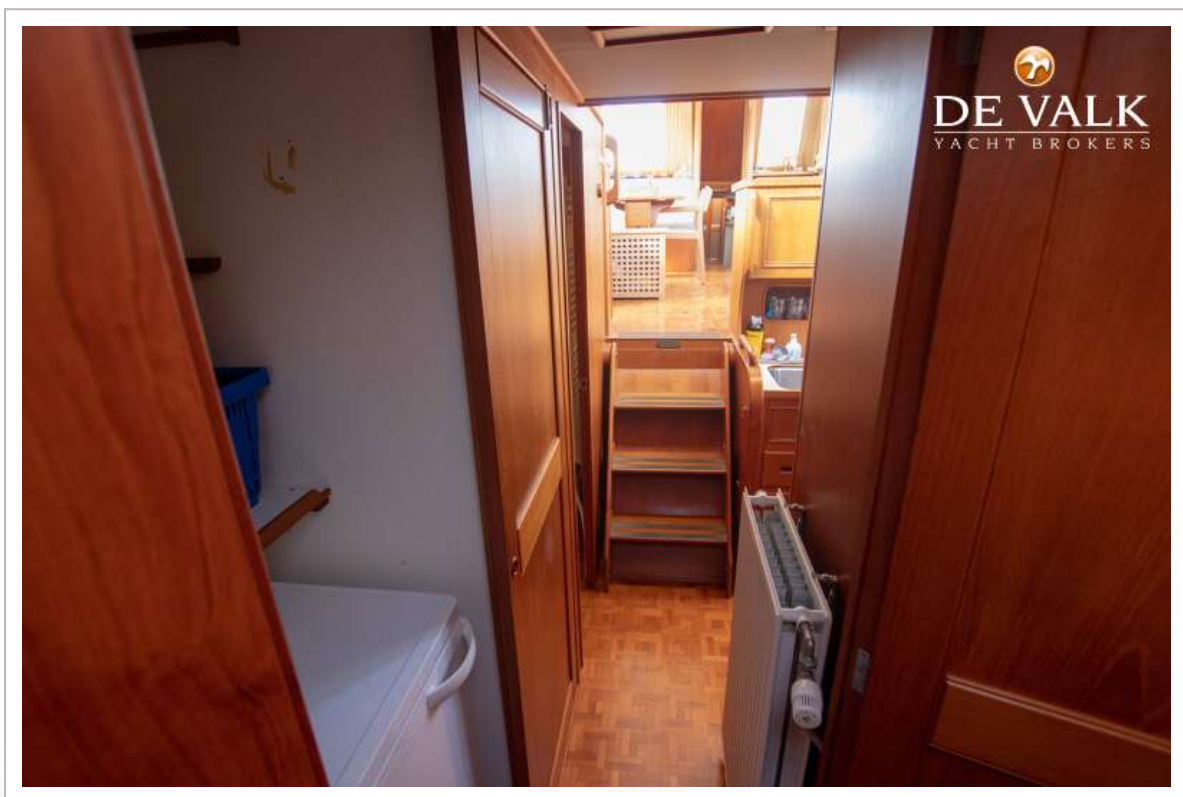
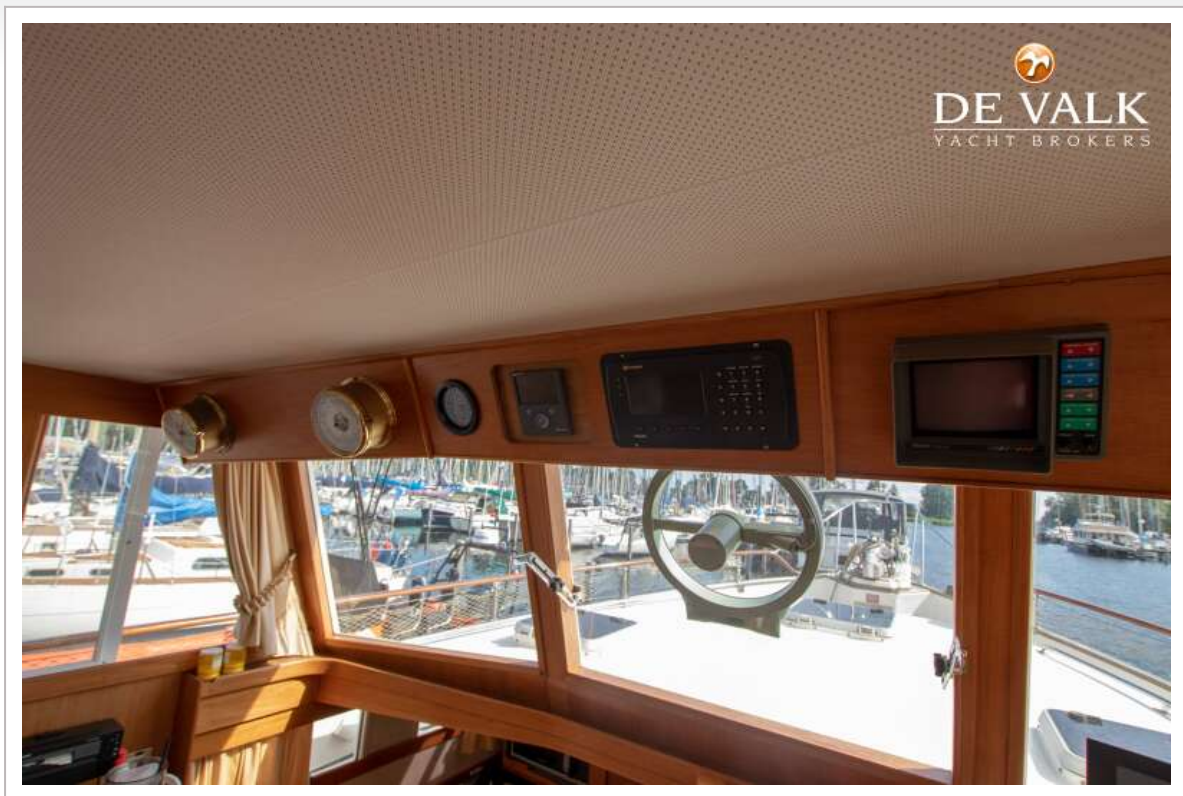
GRAND BANKS 46 CLASSIC



GRAND BANKS 46 CLASSIC



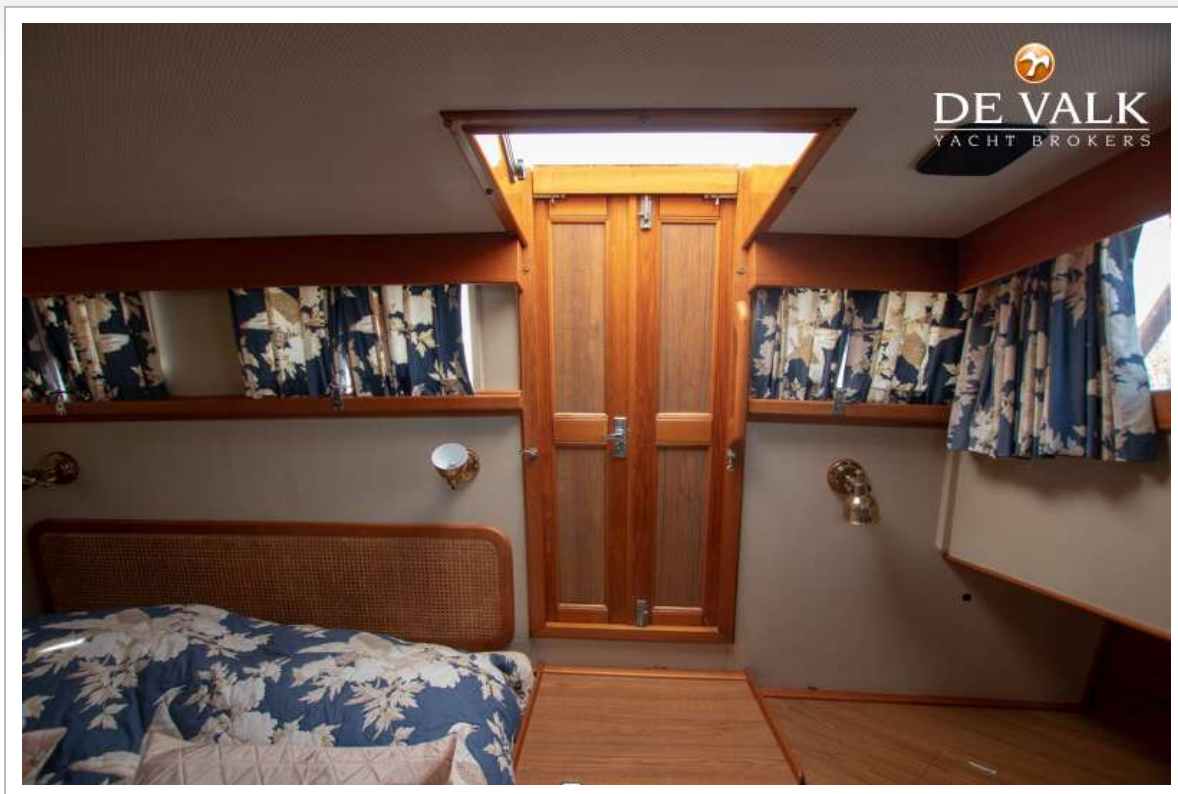
GRAND BANKS 46 CLASSIC



GRAND BANKS 46 CLASSIC



GRAND BANKS 46 CLASSIC



GRAND BANKS 46 CLASSIC



GRAND BANKS 46 CLASSIC

