



DE VALK
YACHT BROKERS



HALLBERG RASSY 45



DE VALK
YACHT BROKERS

HALLBERG RASSY 45

BROKER'S COMMENTS

The HR 45 combined all Hallberg-Rassy's traditional hallmarks, like style, sturdiness, comfort, fine woodwork, thorough technical installations and an ample tank capacity with sailing characteristics unsurpassed for a sailing boat of this type. Many updates have been made in 2007 by current owner.

Reinier van der Wolf

SPECIFICATIONS

| | | | |
|---------------------|--------------------------------|----------------|------------------------|
| Dimensions | 14.12 x 4.32 x 1.88 (m) | Builder | Hallberg Rassy |
| Built | 1989 | Cabins | 2 |
| Material | GRP | Berths | 5 |
| Engine(s) | 1 x Volvo Penta TMD 31A diesel | Hp/Kw | 94.00 (hp), 69.09 (kw) |
| Asking price | sold (VAT) | Lying | at sales office |

CONTACT

| | | | |
|---------------------|---------------------------------------|------------------|------------------------|
| Sales office | De Valk Monnickendam B.V. | Telephone | +31 (0)299 65 63 50 |
| Address | Hoogedijk 6 1145 PM Katwoude NL | E-mail | monnickendam@devalk.nl |

DISCLAIMER

These particulars are given in good faith as supplied but cannot be guaranteed.



HALLBERG RASSY 45

GENERAL

| | |
|----------------------------|---|
| Model | HALLBERG RASSY 45 |
| Type | sailing yacht |
| LOA (m) | 14,12 |
| LWL (m) | 11,60 |
| Beam (m) | 4,32 |
| Draft (m) | 1,88 |
| Year built | 1989 |
| Builder | Hallberg Rassy |
| Country | Sweden |
| Designer | German Frers |
| Displacement (t) | 16 |
| Ballast (tonnes) | lead |
| CE norm | A |
| Hull material | GRP |
| Hull colour | off-white |
| Hull shape | round-bilged |
| Superstructure material | GRP |
| Rubbing strake | Brass strip |
| Deck material | GRP |
| Deck finish | teak 2007 |
| Superstructure deck finish | teak 2007 |
| Cockpit deck finish | teak 2007 |
| Deckhatch | 5x Lewmar (2007), hatch covers (2014), Ocean air hatch blinds |
| Fuel tank (litre) | stainless steel 590 |
| Freshwater tank (litre) | GRP 1.000 |
| Blackwater tank (litre) | (2007) |
| Blackwater tank extraction | deck extraction (2007) |
| Wheel steering | yes |
| More info on hull | Hull treatment - osmosis prevention (2007) |



Extra info

6x Hella turbo fans in saloon, heads compartments etc. hull inlets have been replaced in 2007 and are connected with a hull plate to avoid electrolysis.

ACCOMMODATION

| | |
|--------------------------------|--|
| Cabins | 2 |
| Berths | 5 |
| Interior | mahogany |
| Floor | teak and holly + carpet |
| Saloon | upholstery - replaced in 2010 |
| Chart table | yes |
| Galley | yes |
| Sink | stainless steel 2x |
| Cooker | calor gas |
| Oven | + grill |
| Microwave | yes |
| Fridge | yes |
| Freezer | additional large freezer under saloon seating port side (2007) |
| Hot water system | Boiler (2007), element (2014). no hot water on swimmingplatform |
| Water pressure system | electrical |
| Manual and/or foot pump | the foot pump for sea water in the galley has been disconnected to allow the sink water outlet for drinking water from the water maker |
| Owners cabin | yes |
| Bathroom | yes |
| Toilet | yes |
| Toilet system | electric (2007) |
| Wash basin | yes |
| Shower | yes |
| Guest cabin 1 | yes |
| Bathroom | yes |
| Toilet | yes |



HALLBERG RASSY 45

| | |
|---------------|---|
| Toilet system | electric (2007) |
| Wash basin | yes |
| Shower | yes |
| Extra info | yes |
| Extra info | Remodeling of middle berth (can be stored as 2x berths- 2007) Copper gas connection from bow to galley replaced in 2007. Gas hose form bottle to copper hose needs to be replaced. Fresh water flushing although forward heads can als be salt water flushing. |

MACHINERY

| | |
|-------------------------|---|
| No of engines | 1 |
| Make | Volvo Penta |
| Type | TMD 31A |
| HP | 94,00 |
| kW | 69,09 |
| Fuel | diesel |
| Year installed | 1989 |
| Maximum speed (kn) | 9 |
| Cruising speed (kn) | 8,5 |
| Range (nm) | yes |
| Engine hours | 4488 (30-4-2016) |
| Gearbox | MS4A single lever |
| Bowthruster | electric Max Power 24V (2007) |
| Propeller type | folding Brunton |
| Propeller blades | 4 |
| Manual bilge pump | Jabsco bilge pump in cabin (membranes 2007), Jabsco manual cockpit bilge pump (installed in 2007), 2-way valve at intake of Volvo Penta engine to allow bilge pumping and clean water wash though of cooling system |
| Electric bilge pump | yes |
| Electrical installation | 220V Domestic circuit via genset/shore power, 24V and 12V Domestic circuits, 12V engine circuits |



HALLBERG RASSY 45

| | |
|---------------------------------|---|
| Generator | Mastervolt Whisper 8 24v/2000 combi. Had service in April 2016. |
| Start battery | 1x 120 Ah 12V (July 2015) |
| Service battery | 4x 140 Ah 12V Domestic batteries (joined to produce 280 Ah at 24V - June 2014) |
| Generator battery | 1x 90 Ah (2010) |
| Bowthruster battery | 2x (6-2014) |
| Battery monitor | Mastervolt |
| Battery charger | Victron 45 amp charger (1989), C-tek charger under stairway for starter battery |
| Battery charger/inverter | Combi Mastervolt with distant monitor 24-2000 (2007) |
| Shorepower | 220V |
| Watermaker | Dessolater 60L per hour 24V-220V (2007), spare watermaker pulleys Still to be commissioned due to winter stage. |
| Extra info | Vetus engine room insulation (2007). Rope cutter on propeller. |

NAVIGATION

| | |
|-------------------|---|
| VHF | Sailor VHF /DSC (no Atis - 2007) Sailor MF/HF (currently requires servicing -no Atis - 2007) Icom VHF-GMDSS (no Atis - 2007)) Raymarine man overboard |
| Radar | Raymarine RS8315 (2007) |
| Plotter | Raymarine E80 chartplotter (2007) + Garmin 2006c chartplotter 92 |
| Navtex | Lokata |
| EPIRB | (2017) |
| Extra info | The two automatic pilots (Raymarine 7001 / Raymarine 6002) are installed near the rudder shaft one with a Simrad drive unit and one with the Raymarine. The 6002 at the back has been disconnected as to avoid extra friction but can be easily connected as a back up. Raymarine Ray tech v6-0 navigator (2007). Iridium Sailor Shipmate RS-8110 (2007) Special Inox Antenna mast. |

EQUIPMENT

| | |
|-------------------------|-----|
| Fixed windscreen | yes |
|-------------------------|-----|



| | |
|----------------------------|-----------------------------------|
| Sprayhood | yes |
| Cockpit cover | (2010) |
| Bimini | yes |
| Sun awning | yes |
| Cockpit cushions | yes |
| Cockpit table | Teak - foldaway |
| Bathing platform | (2007) |
| Bow ladder | yes |
| Deck shower | hot & cold water |
| Anchor | CQR Plough (2007) |
| Anchor chain | 60m (2007) |
| Anchor 2 | Danforth (2007) + reserve 17 kg |
| Windlass | electrical Lofrans 1500W + RM |
| Deck wash | yes |
| Dinghy | Carribbean 2,8m (2007) |
| Outboard | Suzuki 7 hp (2007) Need cleaning. |
| Sea railing | (2010) |
| Pushpit | S/S |
| Pulpit | S/S |
| Life raft | 2x |
| Last life raft survey | service required |
| Lifebuoy | yes |
| Danbuoy | yes |
| Safety lines on deck | yes |
| Horn | air pressure 2x |
| Fenders | yes |
| Mooring lines | yes |
| TV | Samsung flat screen |
| Radio-cd player | JVC |
| Fire extinguisher | 2x (2000) |
| Latest extinguisher survey | 2013 |



Extra info

Windscoop breeze catcher. Forward seat attachment for easy watch keeping and sailing.

RIGGING

Rigging

cutter

Standing rigging

S/S

Brand mast

Seldén

Spreaders

3x

Mainsail

Quantum Sails (2007), old Norths Sails re-stitched as back-up)

Jib

140% Ocean Dacron (2007)

Jib I

100% - rarely used

Genoa

Quantum Sails (2007), old Norths Sails re-stitched as back-up)

Genoa furler

Bamar

Cutter furler

Reckman

Gennaker

+ suffer

Stormjib

(2007)

Primary sheet winch

2x Lewmar 43CST

Genoa sheetwinches

2x Lewmar 66CST, 1x electric, 1x manual

Halyard winches

2x Lewmar 44 CST (mast) 1x Lewmar 48 CST (boom)

Spinnaker winch

1x Lewmar 8C spinnaker lift winch (mast)

Multifunctional winches

1x Lewmar 66 CST elect.

Spi-pole

yes

Jockey-pole

yes

Extra info

Standing rigging largely replaced in 2010. Cutter stay and one check stay replaced September 2014. Mainsail with extra reef for heavy weather (2007). Sail area with jib: 94.57m²/1.018 sq ft.



HALLBERG RASSY 45



HALLBERG RASSY 45



HALLBERG RASSY 45



HALLBERG RASSY 45



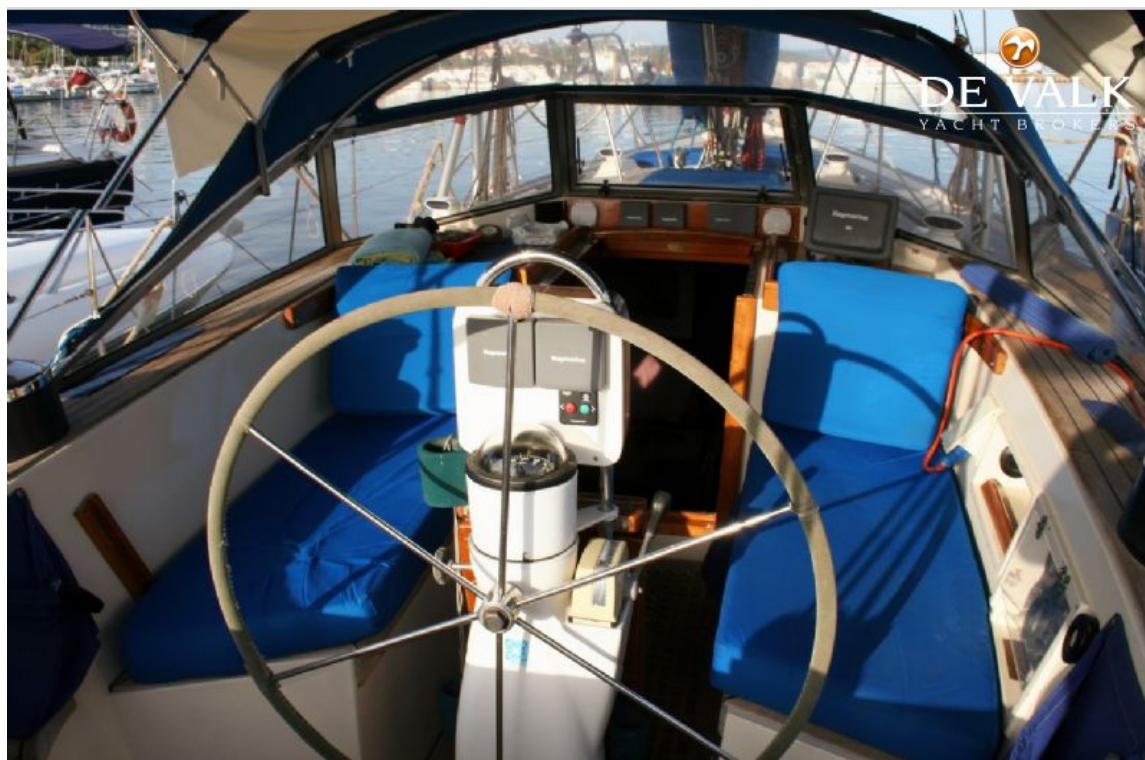
HALLBERG RASSY 45



HALLBERG RASSY 45



HALLBERG RASSY 45



HALLBERG RASSY 45



HALLBERG RASSY 45



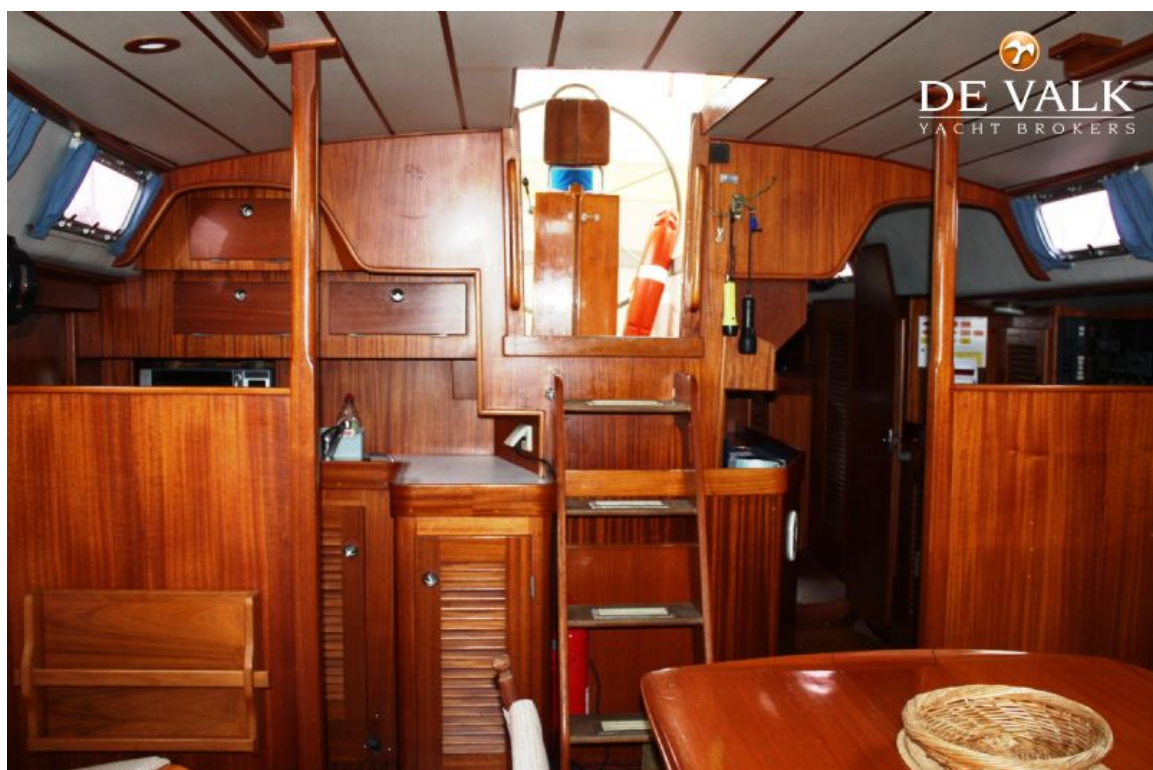
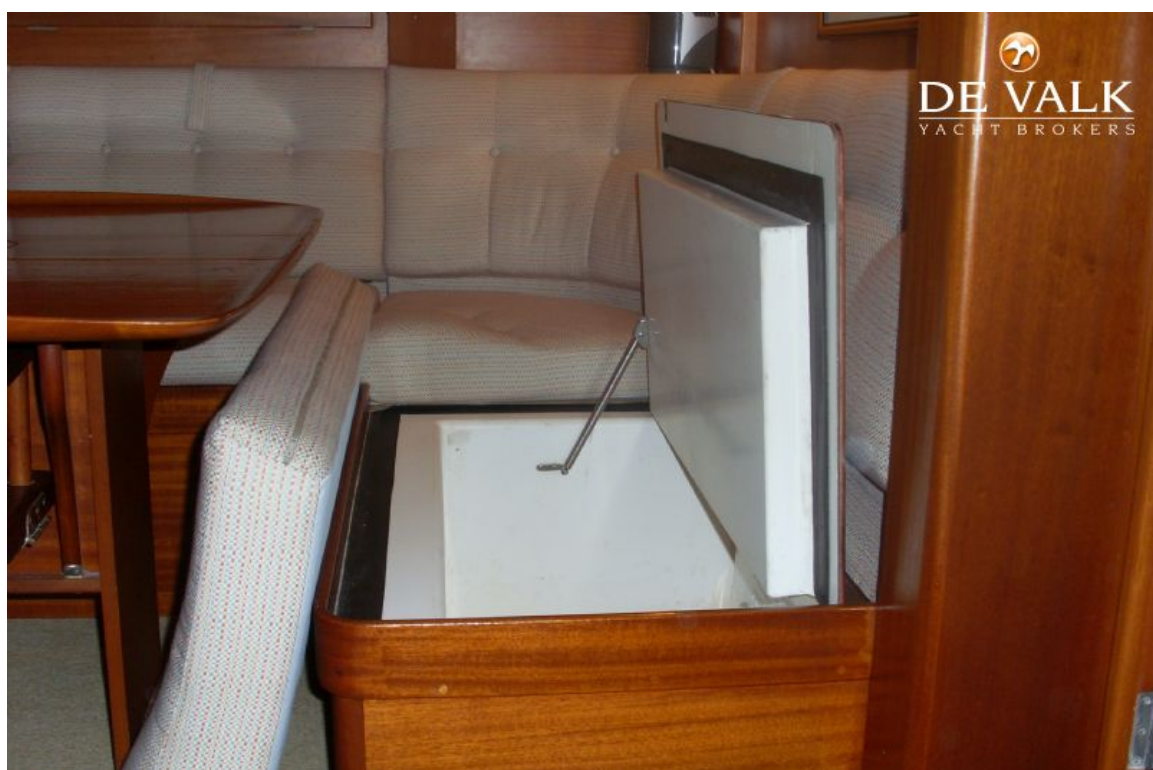
HALLBERG RASSY 45



HALLBERG RASSY 45



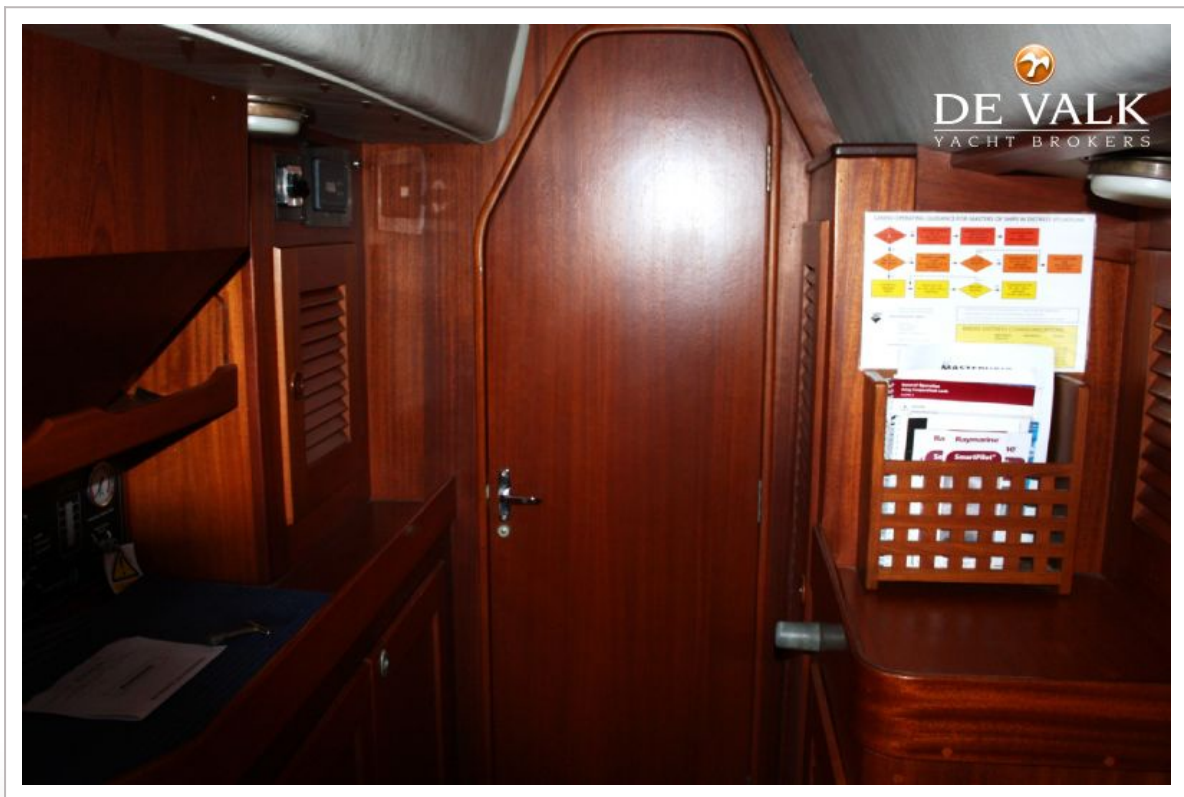
HALLBERG RASSY 45



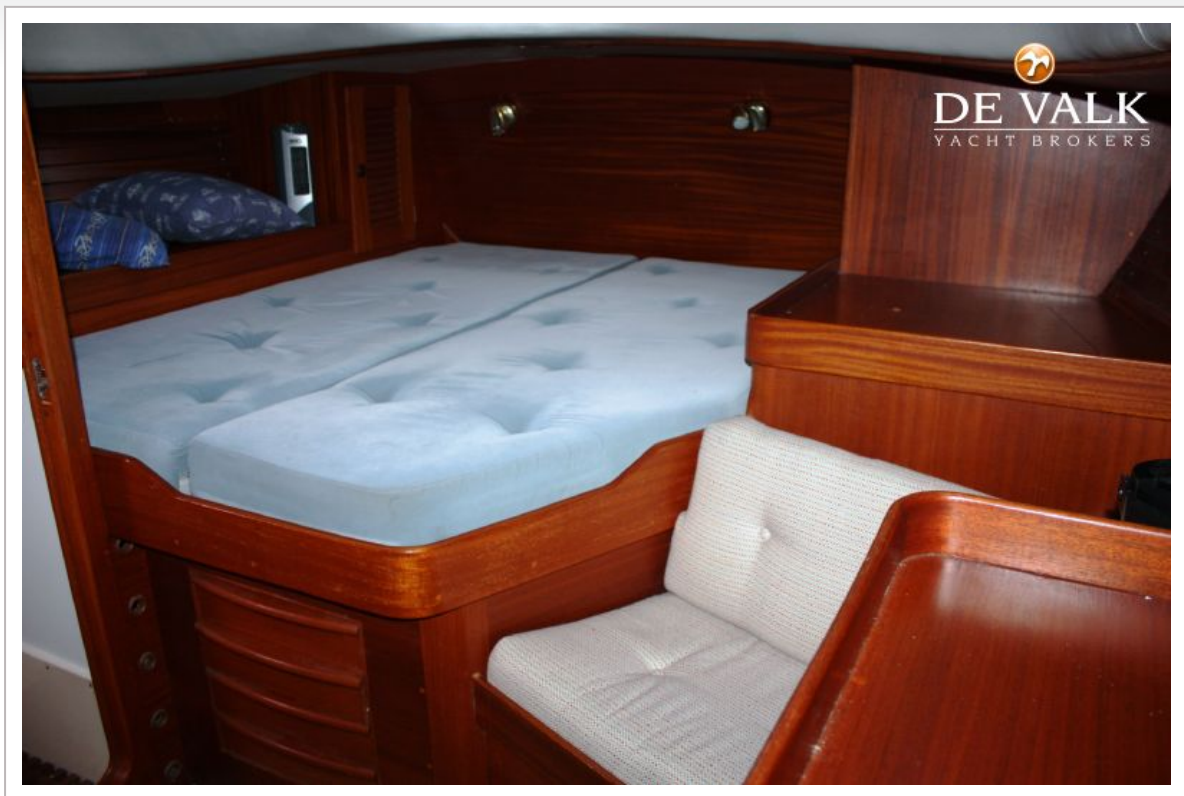
HALLBERG RASSY 45



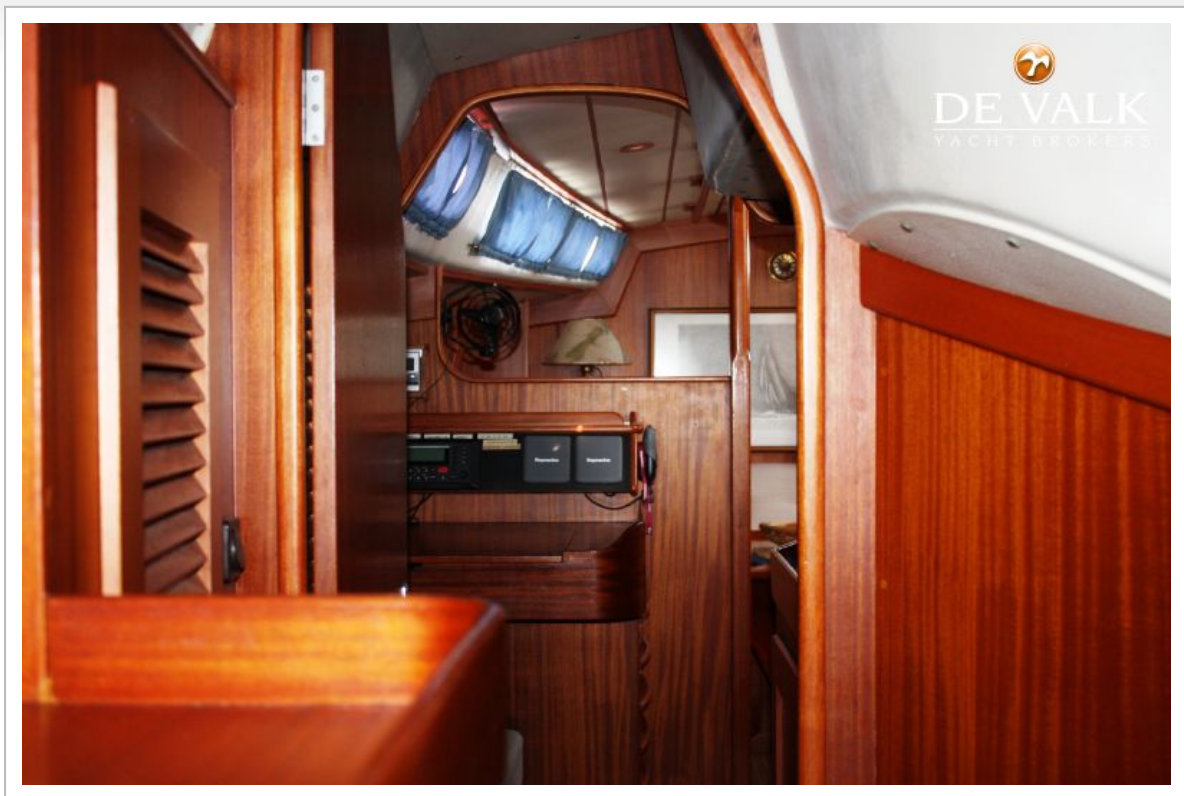
HALLBERG RASSY 45



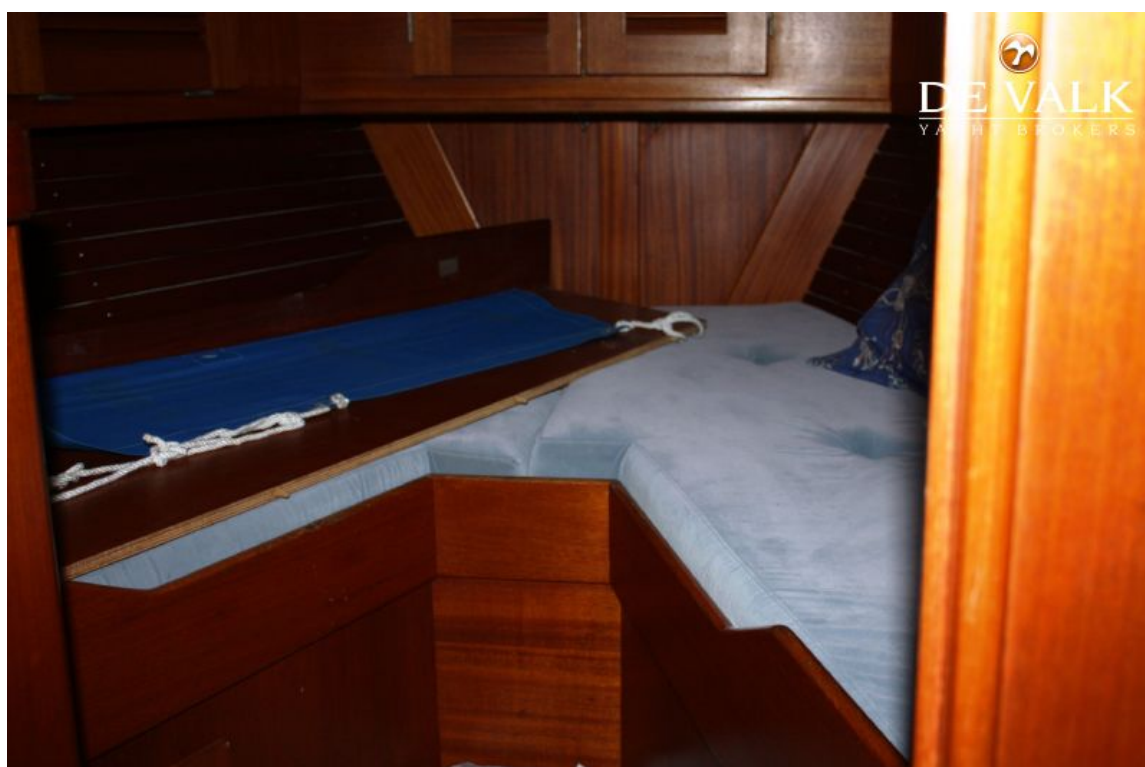
HALLBERG RASSY 45



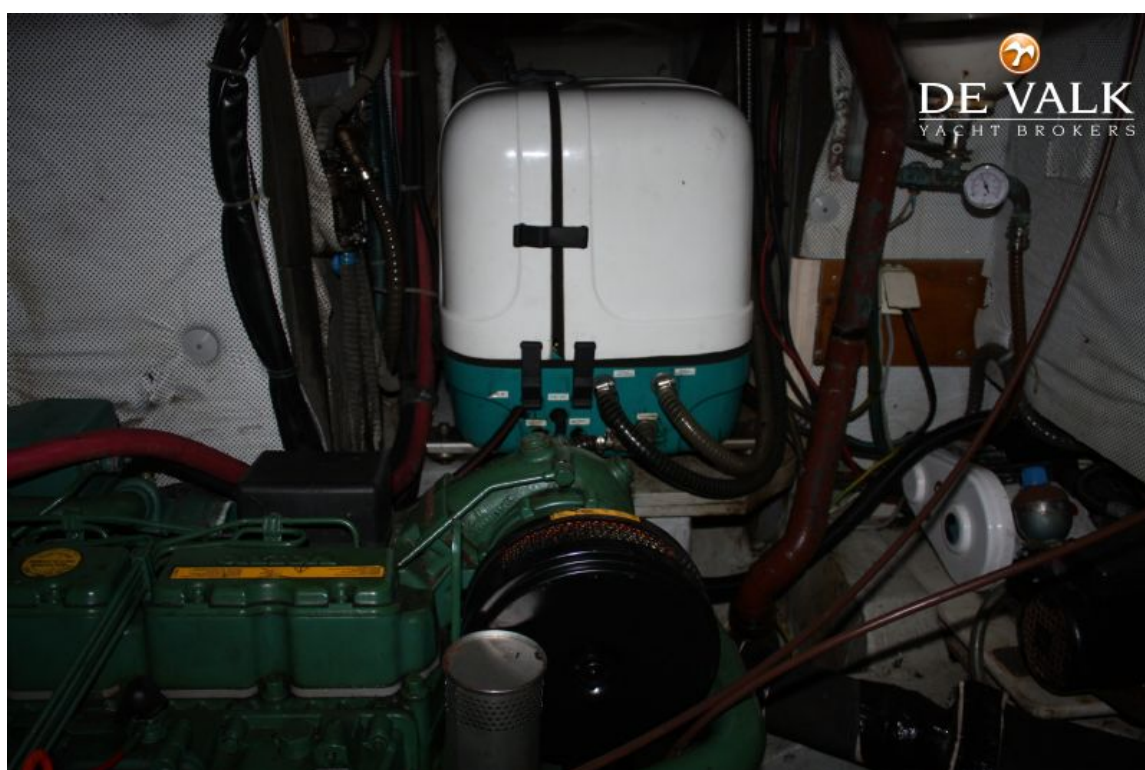
HALLBERG RASSY 45



HALLBERG RASSY 45

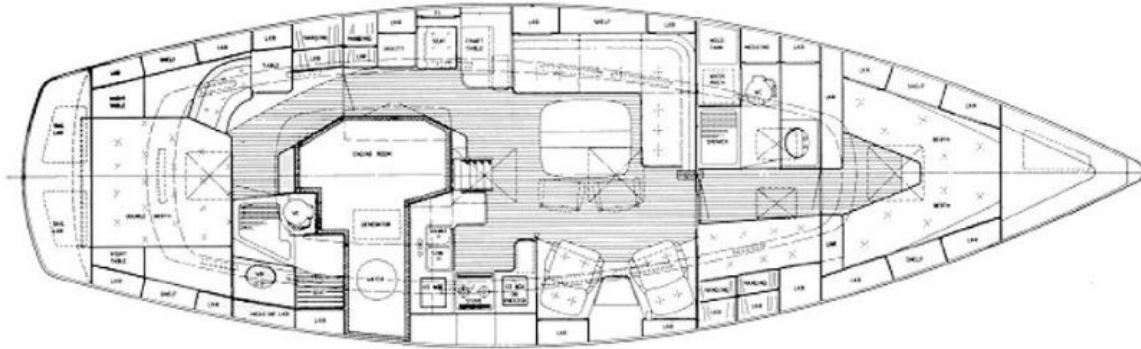


HALLBERG RASSY 45



HALLBERG RASSY 45


DE VALK
YACHT BROKERS




DE VALK
YACHT BROKERS

