



DE VALK
YACHT BROKERS



HYLAS 44



DE VALK
YACHT BROKERS

BROKERAGE | CHARTER | BERTHS | FINANCE | INSURANCE | YACHT MANAGEMENT

BROKER'S COMMENTS

This German Frers design is the ideal mid-cockpit cruiser. Beautiful, elegant, fast and easy to handle. Suitable for world travel. Designed for a crew of 2 but also suitable for weekend sailing with six. "Veerman" has a self-contained owner's cabin and guest cabin. She offers very good access to the engine room and all others. The Hylas 44 has a large galley and plenty of closet space. "Veerman" is in a perfect condition and is ready to sail the 7 seas. You can contact us for an investigation.

Johan Nooitgedagt

SPECIFICATIONS

Dimensions	13.46 x 4.11 x 1.85 (m)	Builder	Kaoshiung Taiwan
Built	1991	Cabins	2
Material	GRP	Berths	6
Engine(s)	1 x Yanmar 4JH2-TE62 diesel	Hp/Kw	57.00 (hp), 41.95 (kw)
Asking price	sold (VAT)	Lying	elsewhere / Not at sales office

CONTACT

Sales office	De Valk Hindeloopen B.V.	Telephone	+31 514 52 40 00
Address	Oosterstrand 1 8713 JS Hindeloopen NL	E-mail	hindeloopen@devalk.nl

DISCLAIMER

These particulars are given in good faith as supplied but cannot be guaranteed.



GENERAL

Model	HYLAS 44
Type	sailing yacht
LOA (m)	13,46
Beam (m)	4,11
Draft (m)	1,85
Headroom (m)	1,95
Year built	1991
Builder	Kaoshiung Taiwan
Country	Taiwan
Designer	German Frers
Displacement (t)	12
Hull material	GRP
Hull colour	blue
Keel type	fin keel
Superstructure material	GRP
Rubbing strake	rubber
Deck material	GRP
Deck finish	teak
Superstructure deck finish	paint
Cockpit deck finish	teak
Antifouling (year)	2023
Dorades	2
Window frame	aluminium
Window material	perspex
Deckhatch	5
Portholes	aluminium
Fuel tank (litre)	stainless steel 200 ltr
Level indicator (fuel tank)	yes
Fuel daytank (litre)	yes
Freshwater tank (litre)	stainless steel 300 ltr



Level indicator (freshwater)	yes
Blackwater tank (litre)	yes
Blackwater tank extraction	deck extraction
Greywater tank (litre)	stainless steel
Wheel steering	cable steering
Outside helm position	cable steering
Emergency tiller	yes

ACCOMMODATION

Cabins	2
Berths	6
Interior	teak
Floor	teak
Open cockpit	yes
Aft deck	yes
Saloon	yes
Headroom saloon (m)	1,95
Heating	diesel ducted hot air
Heating 2	electric 220V
Navigation center	yes
Chart table	yes
Aft Cabin	yes
Galley	yes
Countertop	plastic
Sink	stainless steel
Cooker	calor gas 2 burner
Oven	yes
Microwave	yes
Fridge	yes
Hot water system	220V + engine
Water pressure system	Electrical + Manual



Manual and/or foot pump	yes
Coffee maker	yes
Crockery	yes
Owners cabin	French bed In aft cabin
Bed length (m)	2 mtr
Wardrobe	hanging and drawers
Bathroom	separate
Toilet	en suite
Toilet system	manual
Wash basin	in the bathroom
Shower	separate
Guest cabin 1	v-bed
Bed length (m)	2 mtr
Wardrobe	hanging/drawers/shelves
Bathroom	separate
Toilet	separate
Toilet system	electric
Wash basin	at the toilet
Shower	separate

MACHINERY

No of engines	1
Make	Yanmar
Type	4JH2-TE62
HP	57
kW	41.95
Fuel	diesel
Maximum speed (kn)	9
Cruising speed (kn)	8
Engine cooling system	freshwater heat exchanger
Drive	shaft



Engine controls	bowden cable
Gearbox	hydraulic
Bowthruster	electric 2022
Gearbox	hydraulic
Exhaust	watercooled
Propeller type	fixed
Propeller blades	2
Propeller shaft material	stainless steel
Shaft lubrication	water
Manual bilge pump	yes
Electric bilge pump	yes
Bilge alarm	yes
Electrical installation	yes
Generator	yes
Batteries	yes
Start battery	2021 1x 180AH
Service battery	2021 2x 200AH
Bowthruster battery	Same as windlass
Sternthruster battery	yes
Windlass battery	Same as bowthruster
Battery charger	2x 50AH
Inverter	2000 watt
Solar panel	100 watt
Diode battery combiners	yes
Shorepower	with cable

NAVIGATION

Compass	2x
Depth sounder	yes
Depth sounder/log	yes
Windset	yes



VHF	2x
Autopilot	yes
Radar	Hybrid touch furuno
GPS	Furuno
Plotter	yes
AIS receiver	Not connected yet
AIS transponder	yes
Navigation lights	yes
Searchlight	yes

EQUIPMENT

Sprayhood with grab rail	yes
Cockpit cover	yes
Bimini	yes
Cockpit table	yes
Boarding ladder	stainless steel
Gangway	yes
Deck shower	yes
Anchor	yes
Anchor chain	60 mtr
Windlass	electrical Maxwel 12v cockpit + deck control
Deck wash	yes
Dinghy	inflatable
Outboard	4pk Yamaha
Outboard support	yes
Davits	stainless steel
Davits controls	manual
Sea railing	wire 80cm high
Railing side opening gates	yes
Life raft	container 2x
Life raft (pers)	2x 6pers



Lifejackets	6x
Lifebuoy	2x
Binocular	yes
Radar reflector	yes
Fenders	6
Mooring lines	6
Spare parts	yes
Tools	yes
Alarm system	yes
TV	yes
TV receiver	yes
Radio	yes
Surround Sound System	yes
Speakers in salon	yes
Speakers in cabin	yes
Fire extinguisher	2x

RIGGING

Rigging	sloop-cutter
Standing rigging	wire
Brand mast	Sparcraft
Material mast	aluminium
Spreaders	yes
Keel stepped mast	yes
Mainsail	2014 x2
Mainsail cover	yes
Battcars	yes
Fully battened mainsail	yes
Cutterstay	yes
Jib I	yes
Genoa	3x



Genoa furler	yes
Spinnaker	yes
Staysail furler	yes
Removable innerforestay	yes
Stormjib	yes
Reefing System	quick-one-line-reefing
Backstay adjuster	mechanical
Boomvang	mechanical and tackle
Primary sheet winch	yes
Genoa sheetwinches	yes
Halyard winches	yes
Multifunctional winches	yes
Spi-pole	aluminium



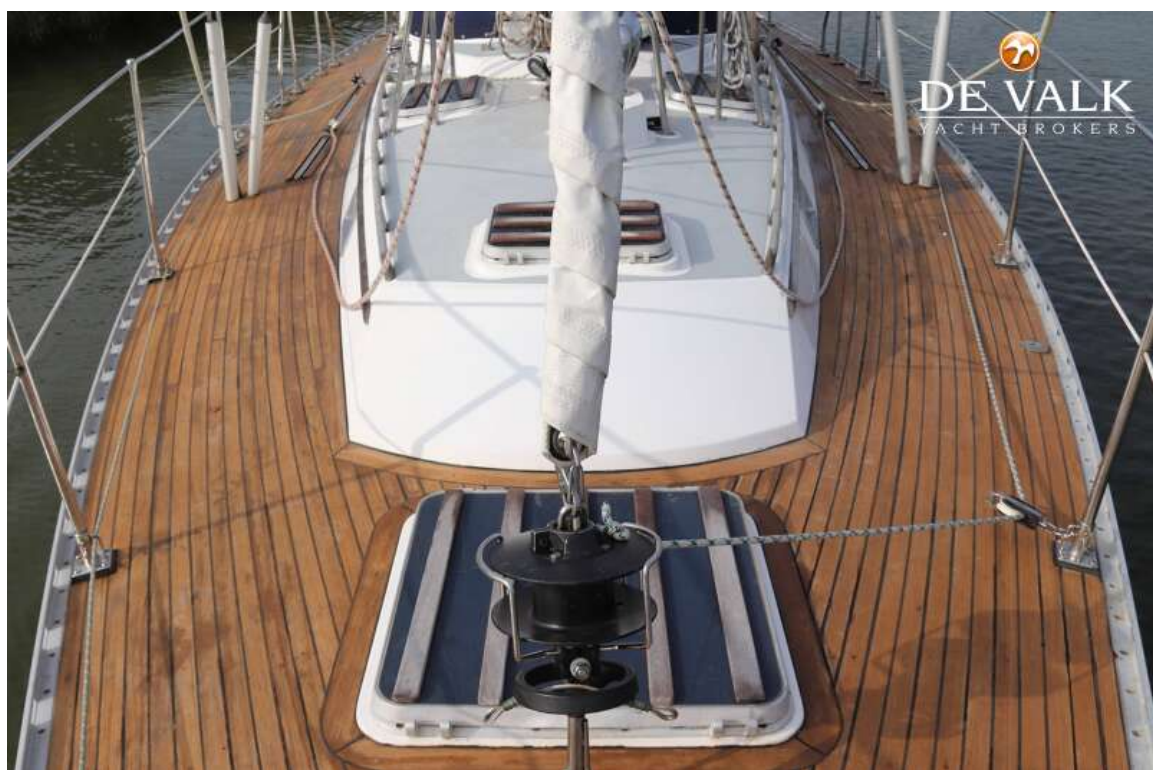
HYLAS 44



HYLAS 44



HYLAS 44



HYLAS 44



HYLAS 44



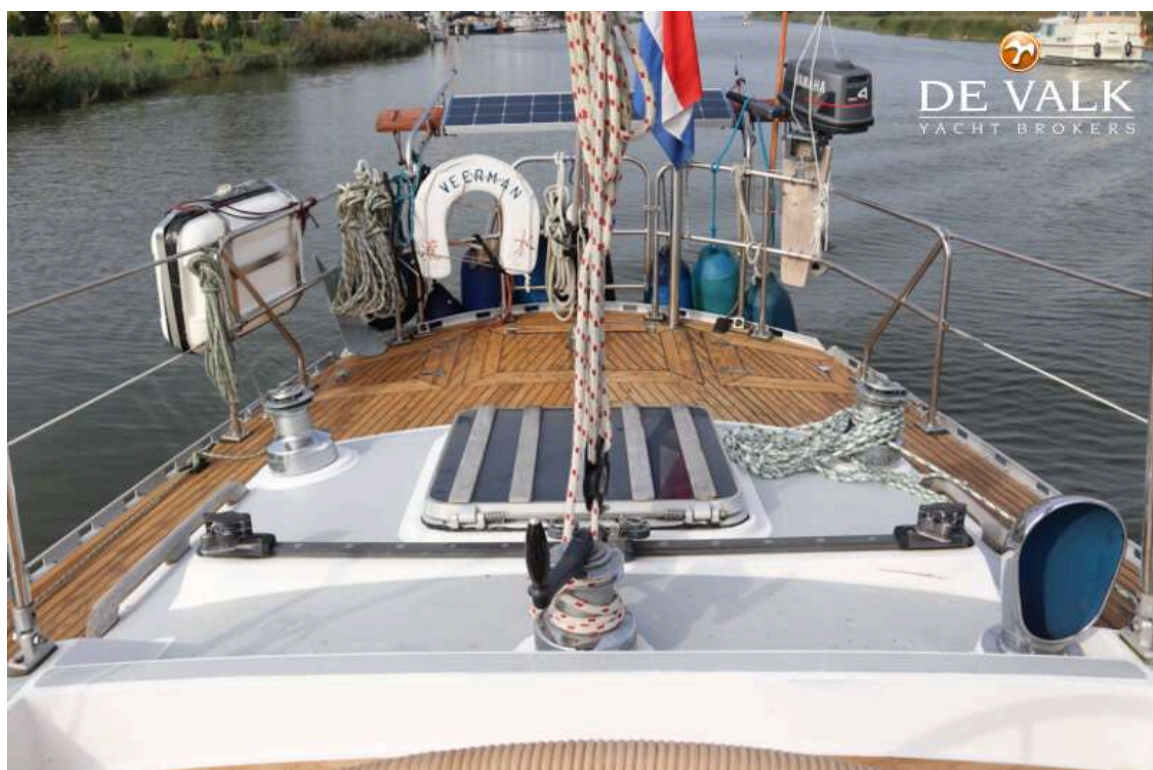
HYLAS 44



HYLAS 44



HYLAS 44



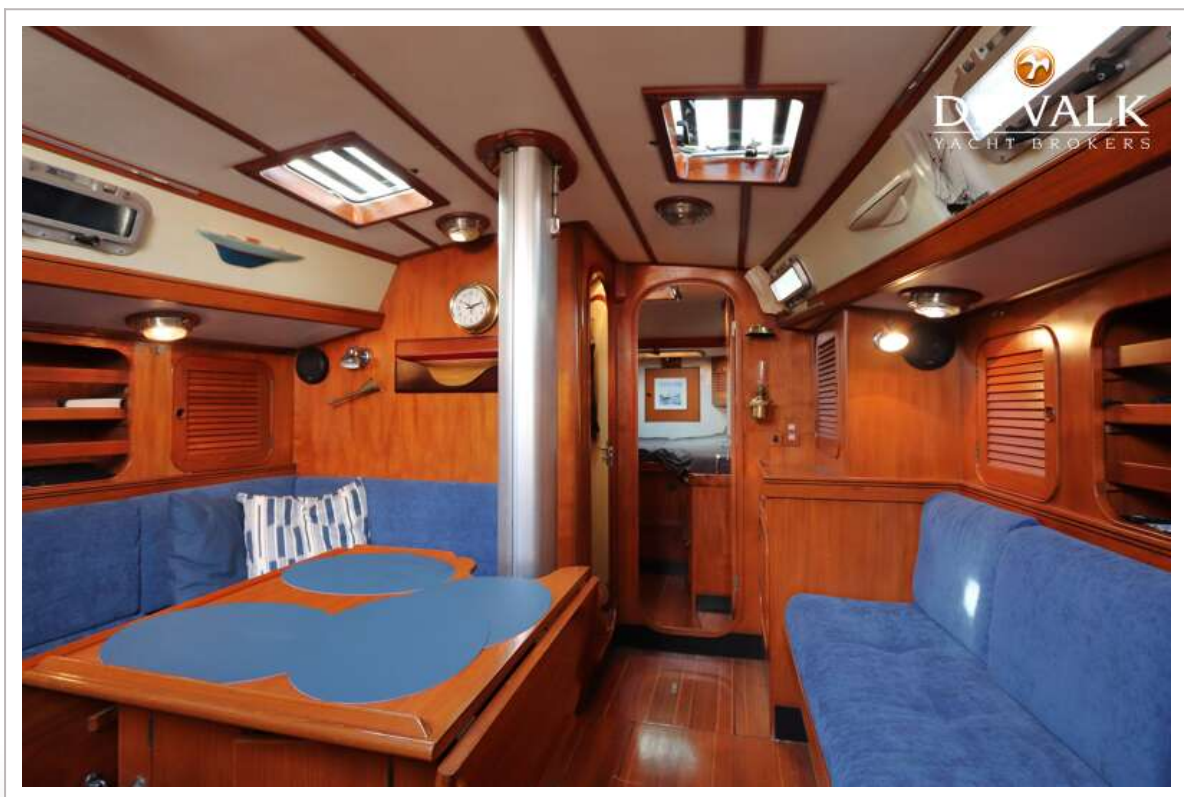
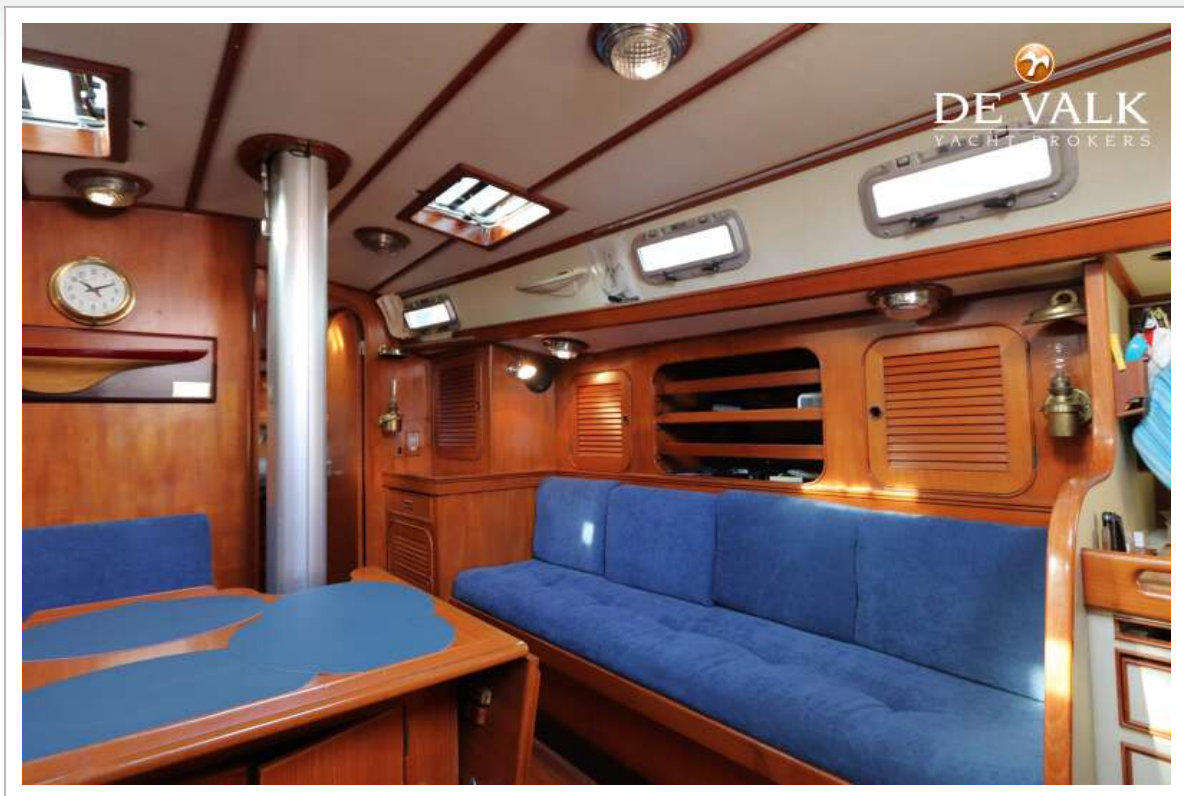
HYLAS 44



HYLAS 44



HYLAS 44



HYLAS 44



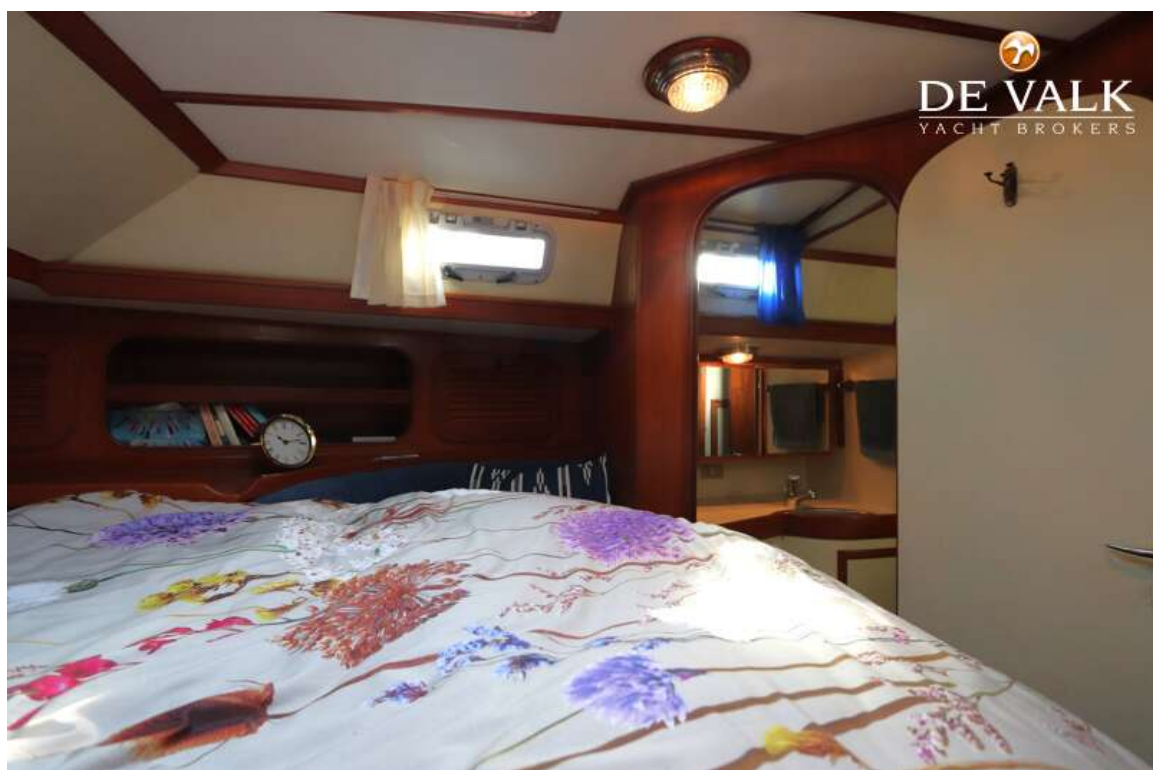
HYLAS 44



HYLAS 44



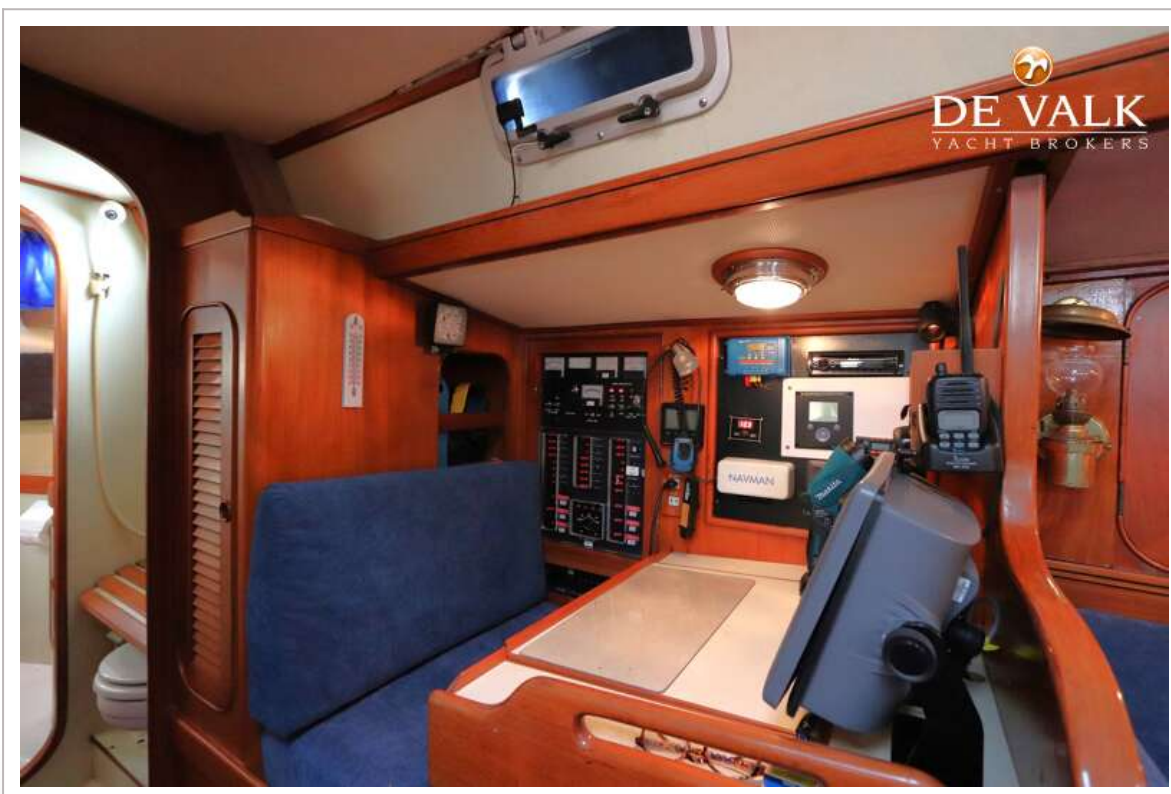
HYLAS 44



HYLAS 44



HYLAS 44



HYLAS 44



HYLAS 44

