



DE VALK
YACHT BROKERS



HANS CHRISTIAN 48T



DE VALK
YACHT BROKERS

BROKERAGE | CHARTER | BERTHS | FINANCE | INSURANCE | YACHT MANAGEMENT

HANS CHRISTIAN 48T

BROKER'S COMMENTS

Truly unique and a once in a lifetime opportunity... this Hans Christian 48t is the last one of the series built. Due to circumstances hardly used by its owner. In fact it's a new yacht with only 177 engine hours. The Hans Christian 48T is a timeless classic design, has beautiful details and is fitted with only the highest standards of workmanship and materials. A sturdy built yacht with enormous storage possibilities and an unmatched appearance. Motion at sea is a quality that is often unmentioned and this is where Hans Christians excel. We will answer your questions with great enthusiasm.

Harald Padberg

SPECIFICATIONS

| | | | |
|---------------------|----------------------------|----------------|-----------------------------------|
| Dimensions | 14.35 x 4.34 x 1.98 (m) | Builder | Andersen Yachts LTD & v. Noort bv |
| Built | 2009 | Cabins | 2 |
| Material | GRP | Berths | 5 |
| Engine(s) | 1 x YANMAR 4LHA-hte diesel | Hp/Kw | 160.00 (hp), 117.60 (kw) |
| Asking price | sold (VAT) | Lying | elsewhere / Not at sales office |

CONTACT

| | | | |
|---------------------|---------------------------------------|------------------|------------------------|
| Sales office | De Valk Monnickendam B.V. | Telephone | +31 (0)299 65 63 50 |
| Address | Hoogedijk 6 1145 PM Katwoude NL | E-mail | monnickendam@devalk.nl |

DISCLAIMER

These particulars are given in good faith as supplied but cannot be guaranteed.



GENERAL

| | |
|----------------------------|-----------------------------------|
| Model | HANS CHRISTIAN 48T |
| Type | sailing yacht |
| LOA (m) | 14,35 |
| LWL (m) | 12,57 |
| Beam (m) | 4,34 |
| Draft (m) | 1,98 |
| Air draft (m) | 19,00 |
| Headroom (m) | 2,00 |
| Year built | 2009 |
| Launched | 2009 |
| Builder | Andersen Yachts LTD & v. Noort bv |
| Country | Thailand |
| Designer | Scott Sprague |
| Displacement (t) | 20 |
| Ballast (tonnes) | lead in GRP 6,68 |
| CE norm | A |
| Hull material | GRP |
| Hull colour | off-white |
| Hull thickness (mm) | 20 - 40 |
| Hull shape | S-bilged |
| Keel type | long keel ** |
| Superstructure material | GRP |
| Rubbing strake | wood & S/S |
| Deck material | GRP |
| Deck finish | teak |
| Superstructure deck finish | teak |
| Cockpit deck finish | teak |
| Dorades | Stainless steel 4 x |
| Window frame | Bronze |
| Window material | tempered glass |



| | |
|------------------------------|---|
| Deckhatch | stainless steel deck hatches and teak butterfly hatch |
| Portholes | 13 x Bronze |
| Fuel tank (litre) | GRP 322 |
| Fuel tank 2 (litre) | GRP 196 + 127 |
| Level indicator (fuel tank) | yes |
| Freshwater tank (litre) | GRP 612 + 236 |
| Level indicator (freshwater) | yes |
| Blackwater tank (litre) | 107 + 30 |
| Level indicator (blackwater) | 2 x Wema |
| Blackwater tank extraction | deck extraction + pump |
| Wheel steering | hydraulic |
| More info on hull | Custom made hardtop solid teak, safety glas, GRP roof and 2 x stainless steel hatches |
| Extra info | ** full encapsulated lead ballast keel |
| Extra info | every winter in heated storage. Sailing area was Baltic Sea. |

ACCOMMODATION

| | |
|---------------------|--|
| Cabins | 2 |
| Berths | 5 |
| Layout | Standard "Europe" solid Burmese teak interior layout with the gally-sinks looking aft. 2 cabins and saloon, 2 double berths with high quality mattresses. Saloon featuring 'U' shaped settee with Teak table to port. Seat / berth to starboard. Navigation station to starboard, aft cabin with double berth in center. Aft head to port with electric toilet, shower and washbasin. Forward head with manual toilet and washbasin. |
| Floor | teak and holly |
| Open cockpit | yes |
| Doghouse | Custom made of solid teak, safety glas en GPR roof |
| Saloon | U shaped settee with teak table, lockers and storage places |
| Headroom saloon (m) | 2 |
| Heating | central hot water ** Eberspracher Hydronic 10 |
| Air-conditioning | 2 x Cruisair |



| | |
|-------------------------|--|
| Navigation center | yes |
| Chart table | part of navigation Center |
| Aft Cabin | yes |
| Dining room | yes |
| Opening door to cockpit | yes |
| Galley | yes |
| Countertop | marble Blue grey / blauw groen / blau-grün |
| Sink | stainless steel 2 x |
| Cooker | calor gas 4 flames / 4 pitten / 4 Flammen |
| Oven | yes |
| Gas alarm | yes |
| Fridge | Isotherm 204 liter |
| Freezer | Isotherm 91 liter |
| Hot water system | 220V/engine/heating |
| Water pressure system | electrical |
| Manual and/or foot pump | Bronze manual pumps for fresh and outboard water |
| Owners cabin | French bed |
| Bed length (m) | 2.00 |
| Wardrobe | hanging/drawers/shelves |
| Bathroom | en suite |
| Toilet | shared |
| Toilet system | electric Vetus |
| Wash basin | in the bathroom |
| Shower | shared |
| Guest cabin 1 | double bed |
| Bed length (m) | 2.00 |
| Wardrobe | hanging and drawers |
| Toilet | separate |
| Toilet system | manual Jabsco |
| Wash basin | at the toilet |



Extra info

Eberspracher Hydronic 10 warm water heating system with outlets in all cabins. 40 liter Calorifier connected to heating system, engine and 230 V. Cruisair Air-Conditioning in aft- and forward cabin.

MACHINERY

| | |
|--------------------------|---|
| No of engines | 1 |
| Make | YANMAR |
| Type | 4LHA-hte |
| HP | 160 |
| kW | 117,60 |
| Fuel | diesel |
| Engine hours | 177 |
| Engine cooling system | freshwater heat exchanger |
| Drive | shaft |
| Shaft seal | yes |
| Engine controls | bowden cable |
| Gearbox | hydraulic |
| Bowthruster | electric Side power SE240/300TC 24v 13 HP/PK/PS |
| Exhaust | watercooled |
| Propeller type | folding Variprop |
| Propeller blades | 3 |
| Propeller shaft material | stainless steel |
| Shaft lubrication | water |
| Manual bilge pump | yes |
| Electric bilge pump | 1 x electric shower pump 1 x electric fresh water pump 1 x electric waste pump to discharge the galleysinks 2 x electric bilge pumps 1 x Jabsco bronze clutch pump 2 x electric pump for discharge holdingtanks 2 x pump for Air conditioning |
| Electrical installation | 12/24/230 volt |
| Generator | silent separator Mastervolt Whisper Ultra 6 Kw never used |
| Running hours generator | 1 |
| Batteries | 10 |



| | |
|--------------------------------|---|
| Start battery | dry starter, new 1 x |
| Service battery | new 2 x 120Ah 12v gel 4 x 225Ah 24v AGM |
| Generator battery | dry starter, new 1 x |
| Bowthruster battery | dry starter, new 2 x |
| Battery monitor | Mastervolt Power system control panel |
| Inverter | 1 x Mastervolt Mass-sine inverter 24/2500 |
| Diode battery combiners | 1 x Mastervolt System-switch 6Kw |
| Shorepower | with cable |
| Extra info | 220V outlets in all cabins |
| Extra info | propshaft Aquadrive |

NAVIGATION

| | |
|------------------------------------|---|
| Compass | Bronze Ritchie Globemaster on binnacle, light in compasshousing |
| Electric compass | Raymarine ST Compass, Dockhouse |
| Depth sounder | Raymarine ST60, dockhouse |
| Depth sounder/log | Raymarine ST60 Tridata, navigation station |
| Forw. looking depth sounder | yes |
| Log | Raymarine ST60 dockhouse |
| Windset | 2 x Raymarine ST60 Wind & CH wind dockhouse & navigation station |
| Repeater | & steering position 3 x Raymarine ST60 Graphic, dockhouse, navigation station |
| VHF | 2 x Raymarine VHF Ray240E |
| Autopilot | with Autopilot smartcontroller (remote control) Raymarine Type 3 hydraulic linear drive at quadrant Raymarine ST6002+ Autopilot |
| Rudder angle indicator | Raymarine ST60 |
| Radar/GPS/plotter | yes |
| Navtex | Raymarine Ray E120 display Navigation station Raymarine Ray E80 steering position |
| Electronic chart(s) | yes |
| AIS transceiver | new 2020 Raymarine AIS 700, Easy TRX, AIS-Tranceiver, class |



| | |
|--------------------------|--|
| EPIRB | Self releasing |
| Navigation lights | yes |
| Searchlight | on the mast with remote controle Marco |
| Extra info | Raymarine Raystar 125 GPS antenne at pushpit Raymarine RD424 Digital radome, 60 cm Martec / sea-me, active echo radar responder on the mast. RR-Pacific aerial (VHF, GSM, TV, ect) |

EQUIPMENT

| | |
|-----------------------------------|---|
| Fixed hardtop | custom made + safety glass |
| Cockpit cover | Cover for all hatches, windlass and pedestal |
| Cockpit cushions | yes |
| Cockpit table | yes |
| Bathing platform | yes |
| Boarding ladder | stainless steel |
| Anchor | Delta 1 x SS Lewmar |
| Anchor chain | Stainless steel 50 mtr |
| Anchor 2 | CQR Plough SS |
| Anchor chain | Anchorline |
| Windlass | electrical Muir Cougar 2500, twin chain gypsies |
| Sea railing | wire |
| Grab rail (superstructure) | teak |
| Pushpit | yes |
| Pulpit | yes |
| Life raft | container |
| Life raft (pers) | 6 |
| Last life raft survey | needs to be serviced |
| Lifebuoy | yes |
| Rope cutter | Spurs |
| Wiper | 3 x |
| Horn | electric Maroc in Mast |
| Radar reflector | Martec / Sea-Me, active radar responder in mast |
| Fenders | yes |



| | |
|-------------------|------|
| Mooring lines | yes |
| Spare parts | yes |
| Radio-cd player | Sony |
| Cockpit speakers | yes |
| Speakers in salon | yes |
| Clock - barometer | yes |

RIGGING

| | |
|-------------------------------|---|
| Rigging | cutter |
| Standing rigging | wire |
| Brand mast | Master |
| Material mast | aluminium coated |
| Spreaders | 1 x 2 |
| Mainsail | 41 m2 UK sails |
| Fully battened mainsail | Leisure furl |
| Cutterstay | yes |
| Furling boom | electric Leisure furl |
| Booster | with sock, new, never used +/- 141m2 Triradial |
| Staysail | with green colored UV-protection, foam-luff and overhead leechline +/- 29m2 UK Sails |
| Staysail furler | Reckman |
| Yankee | with green colored UV-protection, foam-luff and overhead leech line and Reckman furling +/- 62m2 UK Sails |
| Self tacking jib installation | additional track on coachroof for possibility of self tacking staysail |
| Boomvang | gasspring Hall-Spars |
| Primary sheet winch | Electric, fully bronze Lewmar BBST 58 |
| Secondary sheet winch | Electric, fully bronze Lewmar BBST 48 |
| Halyard winches | on mast, fully Bronze 2 x Lewmar BBST46 |
| Reefing winch | Electric, fully bronze 1x Lewmar BBST48 |
| Multifunctional winches | 1 x Lewmar BBST48 Mainsheet |
| Spi-pole | carbon |

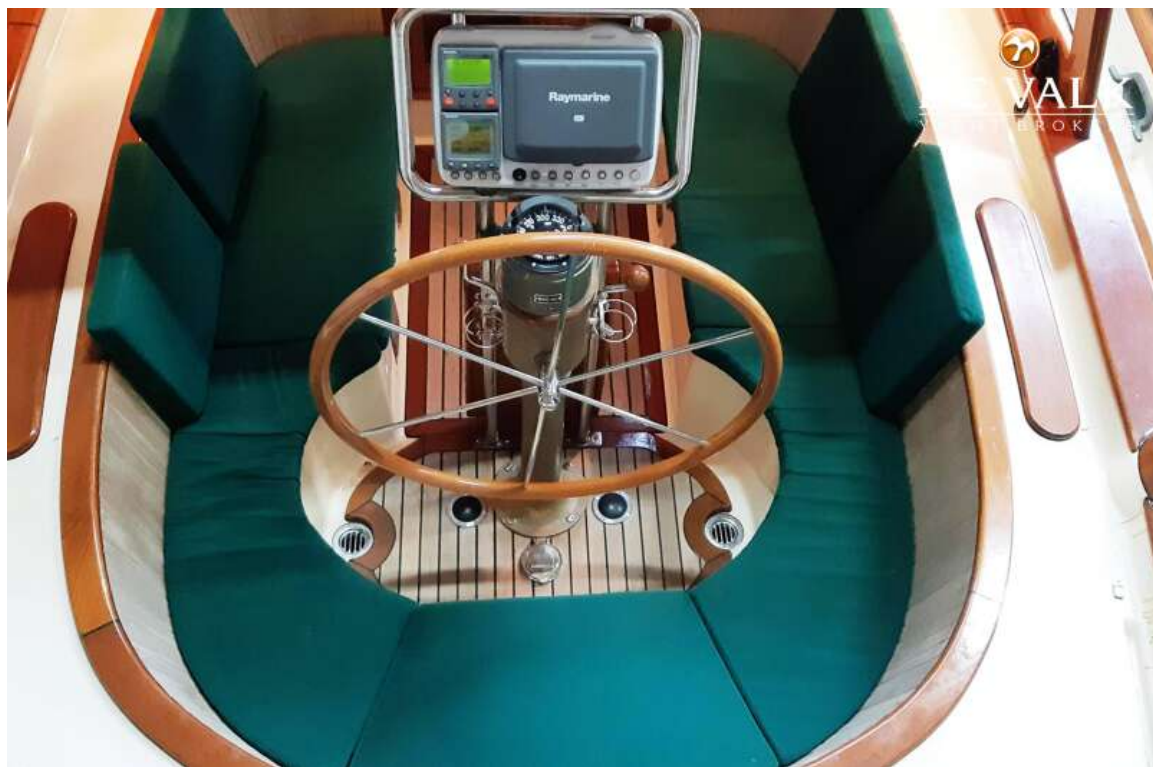


Extra info

white powder coating, climbing steps * MasterSpars



HANS CHRISTIAN 48T



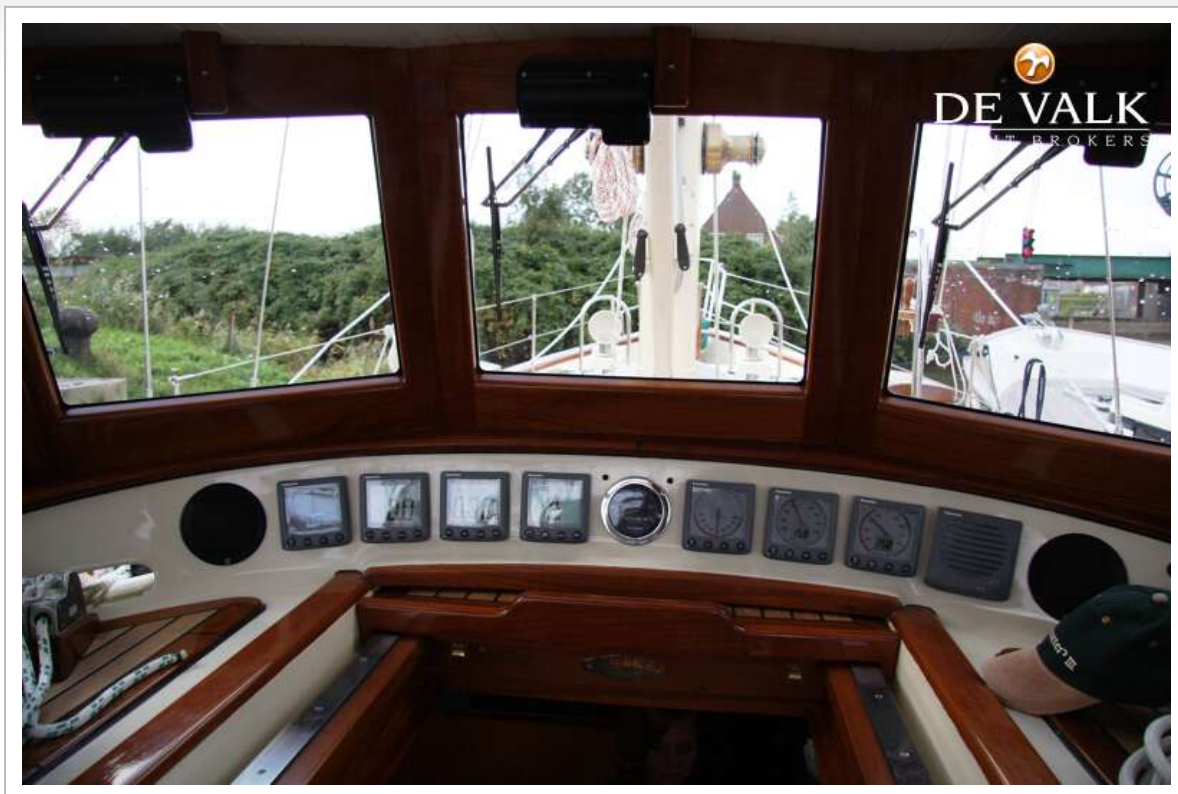
HANS CHRISTIAN 48T



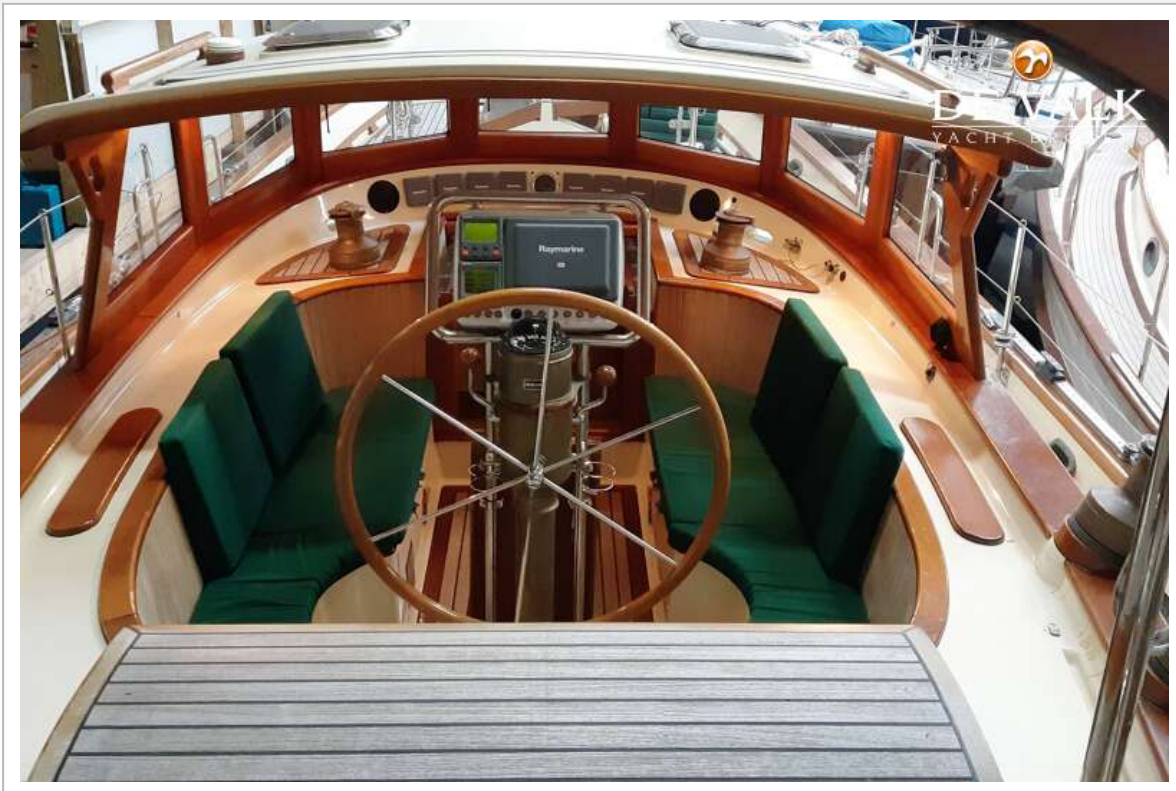
HANS CHRISTIAN 48T



HANS CHRISTIAN 48T



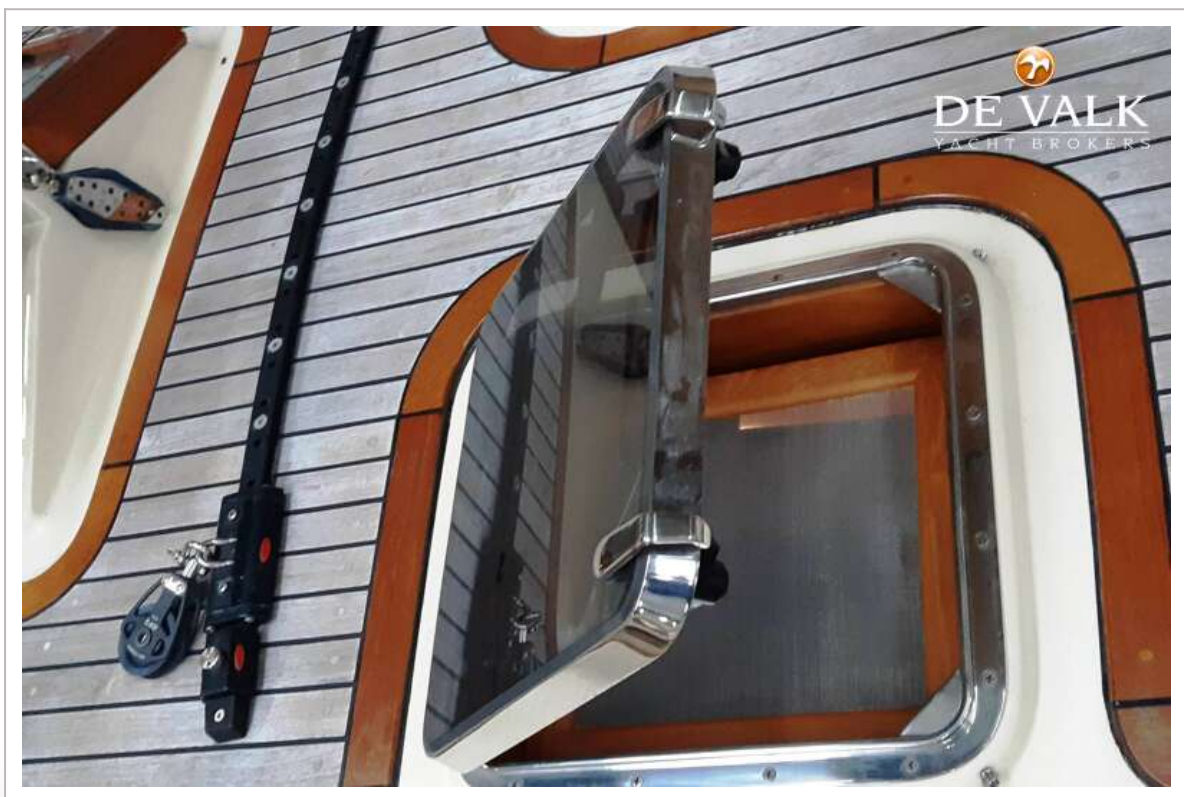
HANS CHRISTIAN 48T



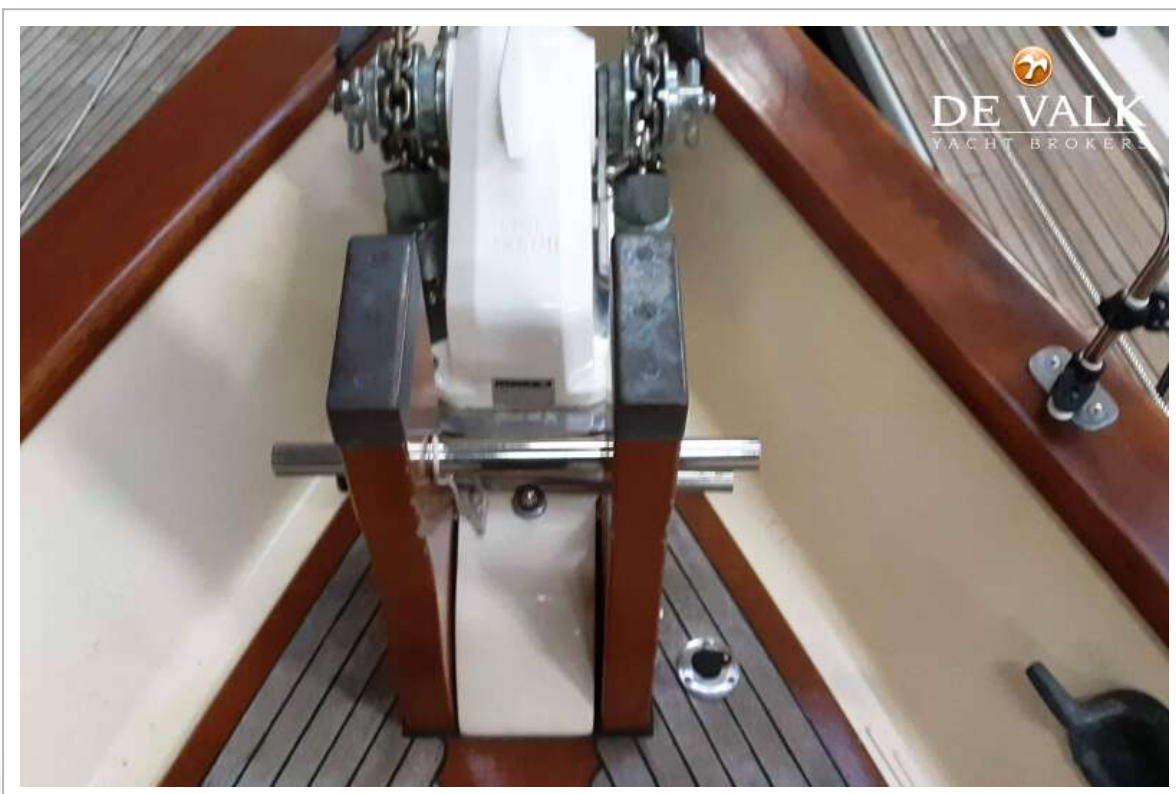
HANS CHRISTIAN 48T



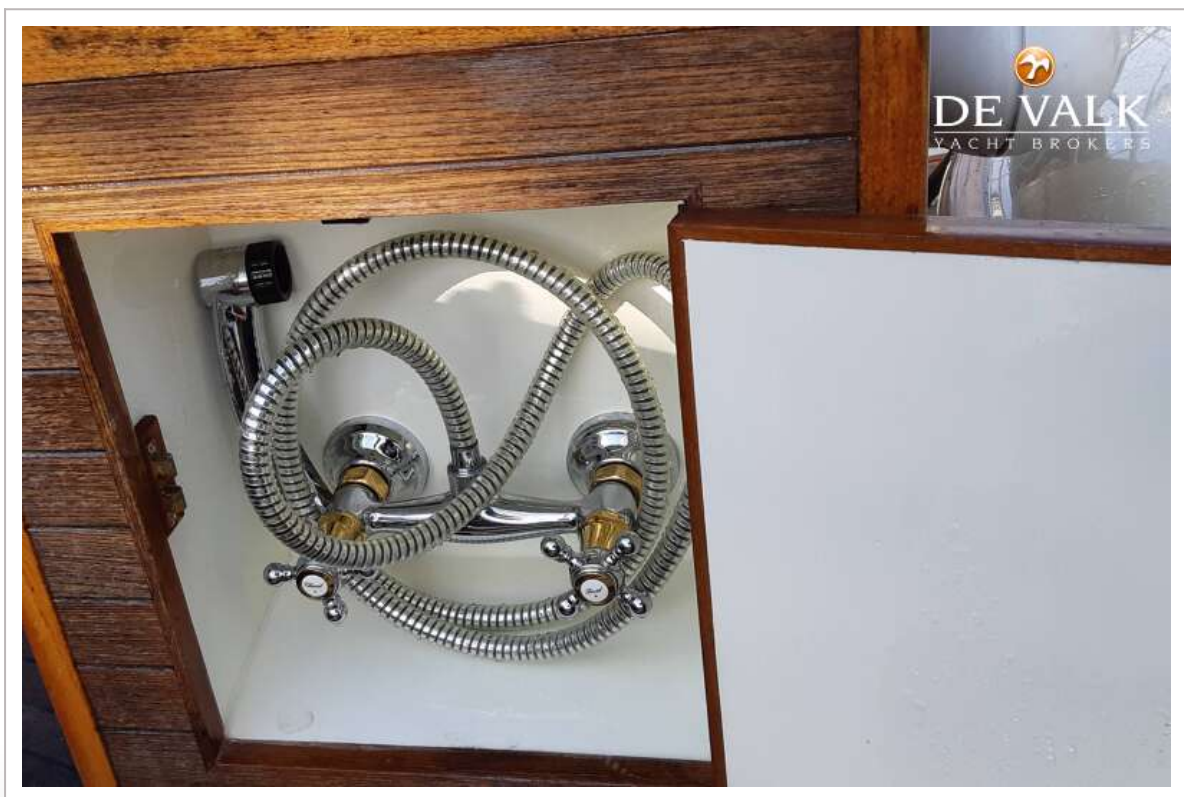
HANS CHRISTIAN 48T



HANS CHRISTIAN 48T



HANS CHRISTIAN 48T



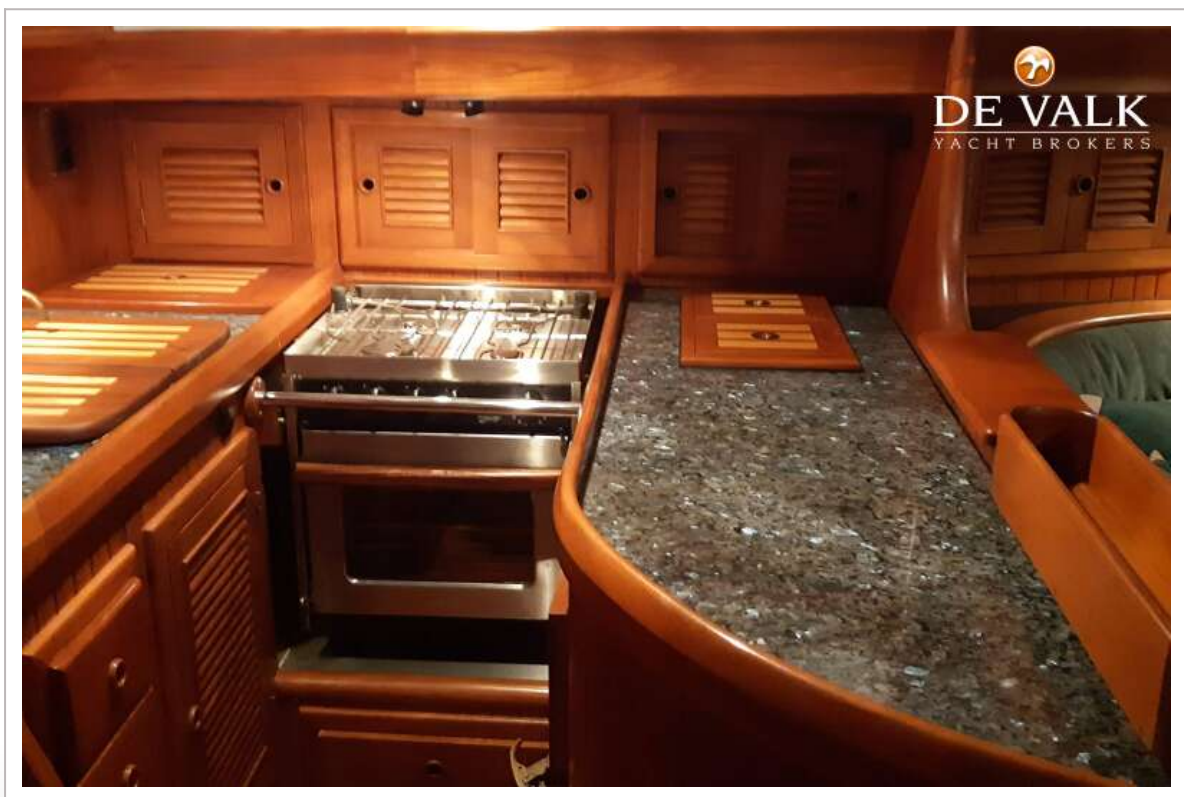
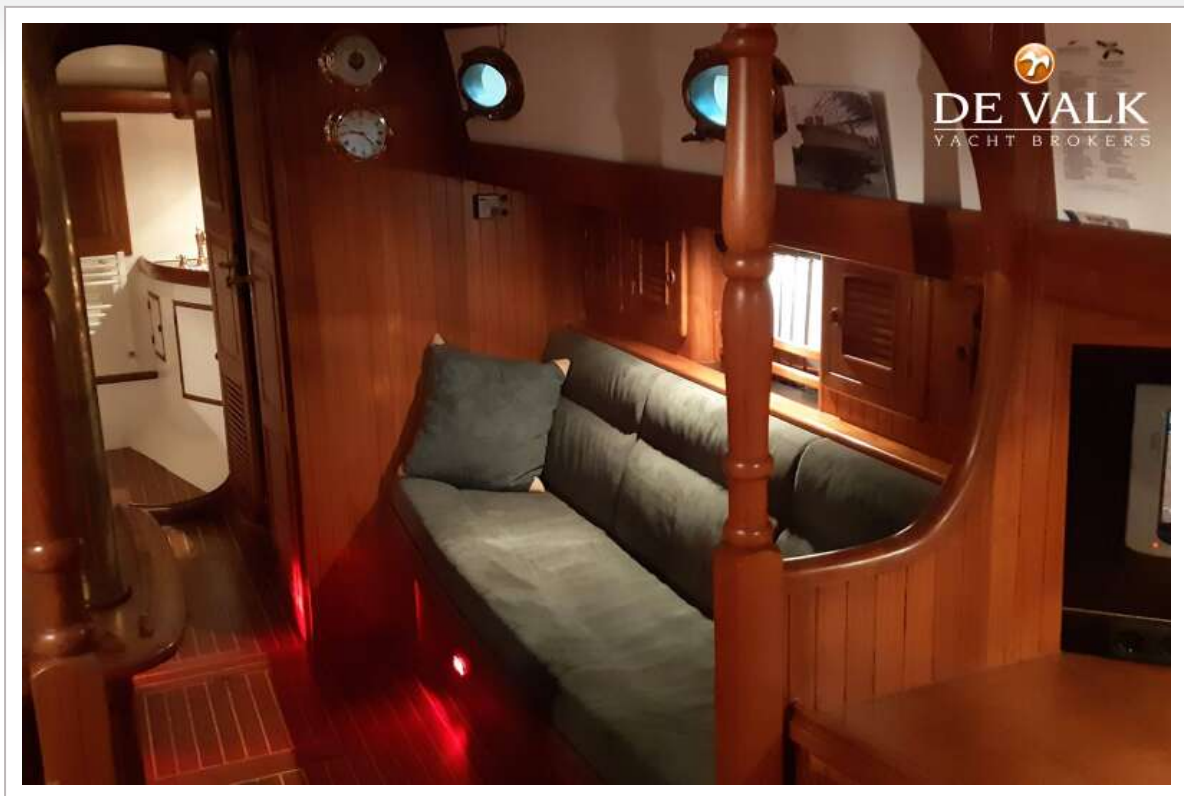
HANS CHRISTIAN 48T



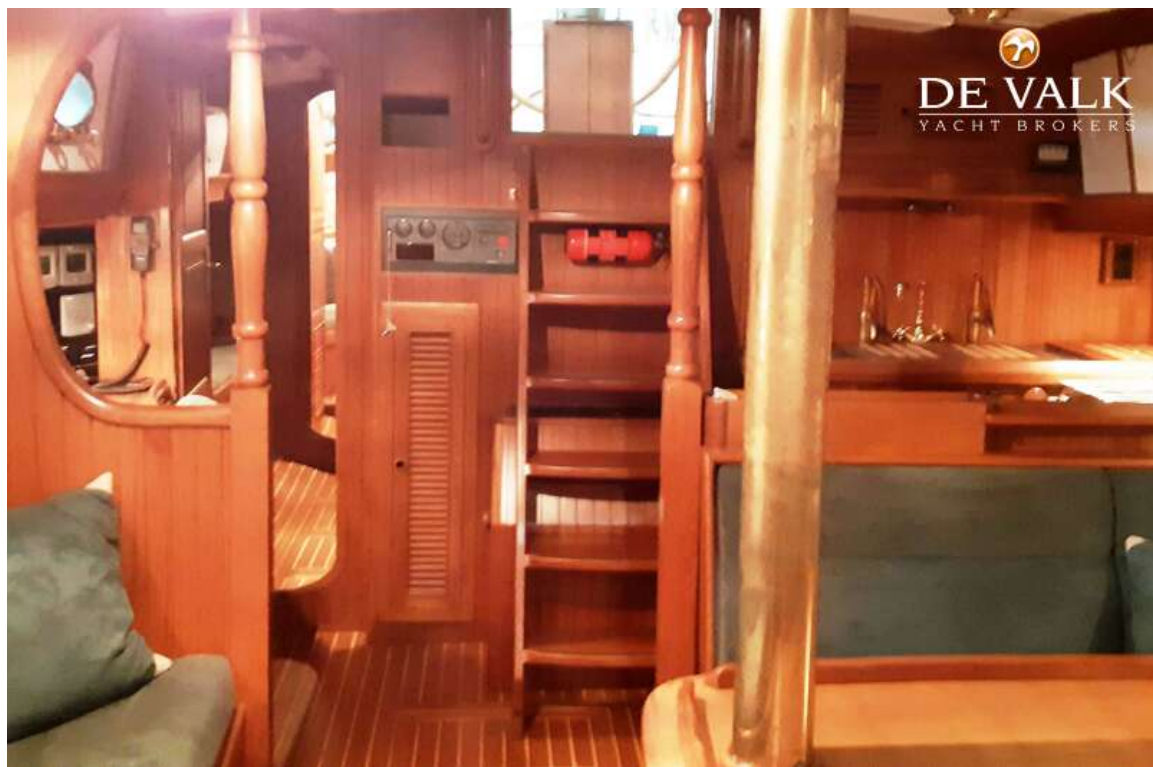
HANS CHRISTIAN 48T



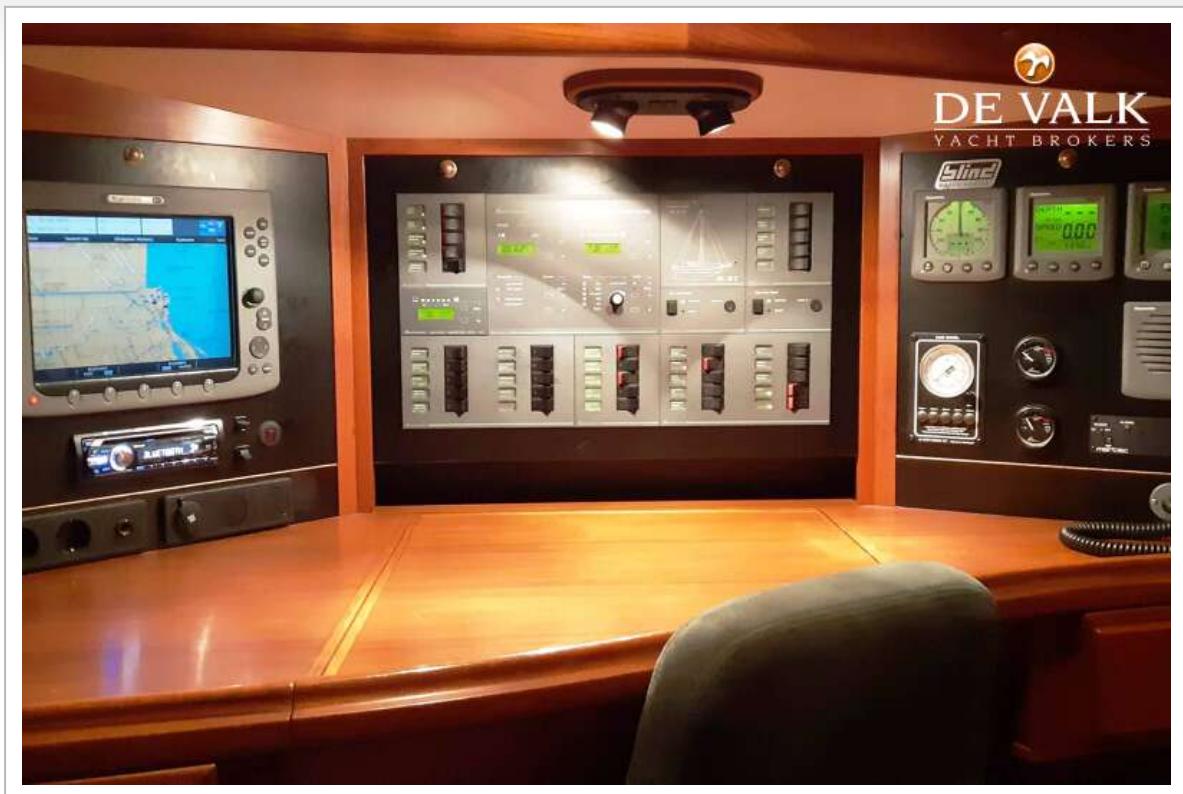
HANS CHRISTIAN 48T



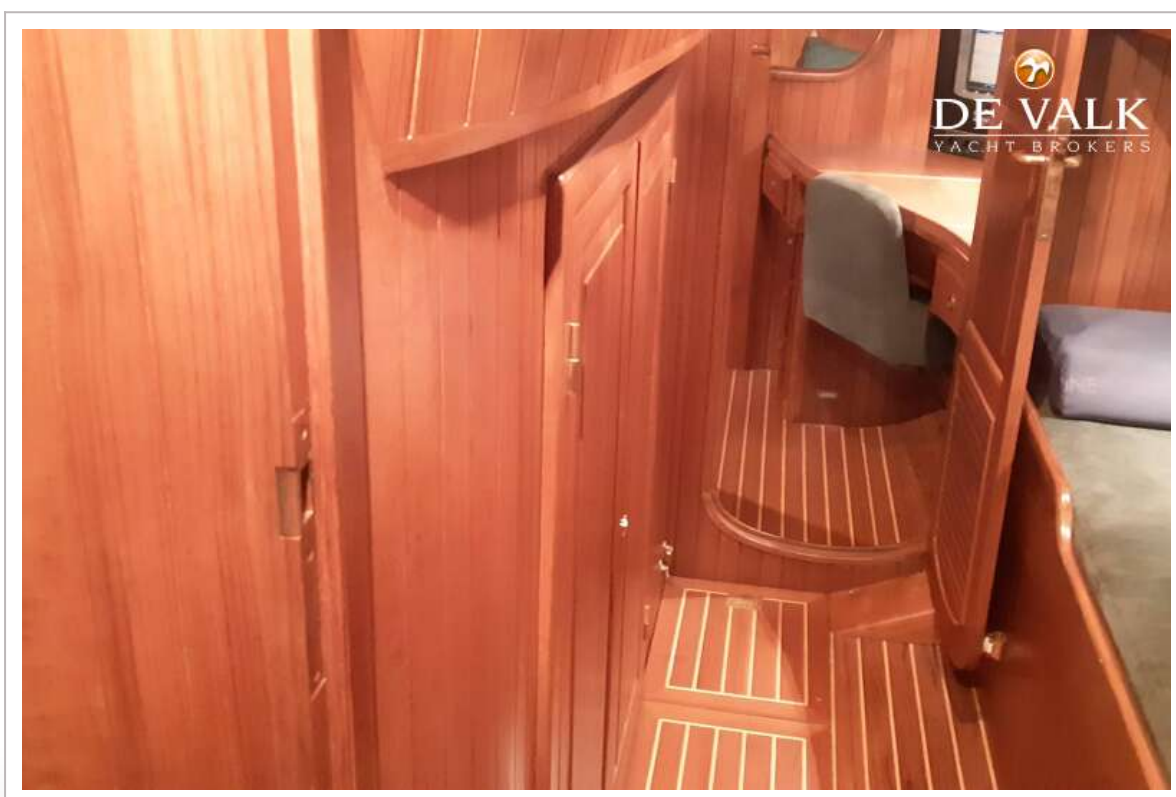
HANS CHRISTIAN 48T



HANS CHRISTIAN 48T



HANS CHRISTIAN 48T



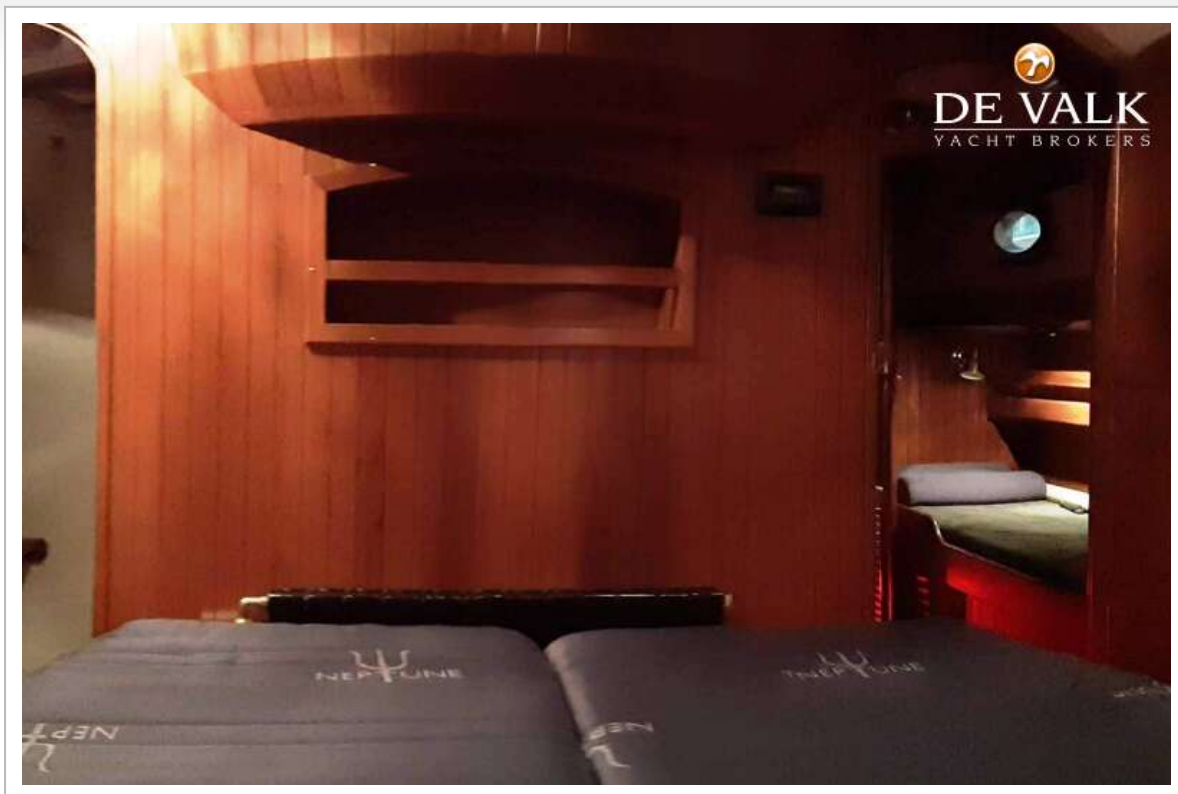
HANS CHRISTIAN 48T



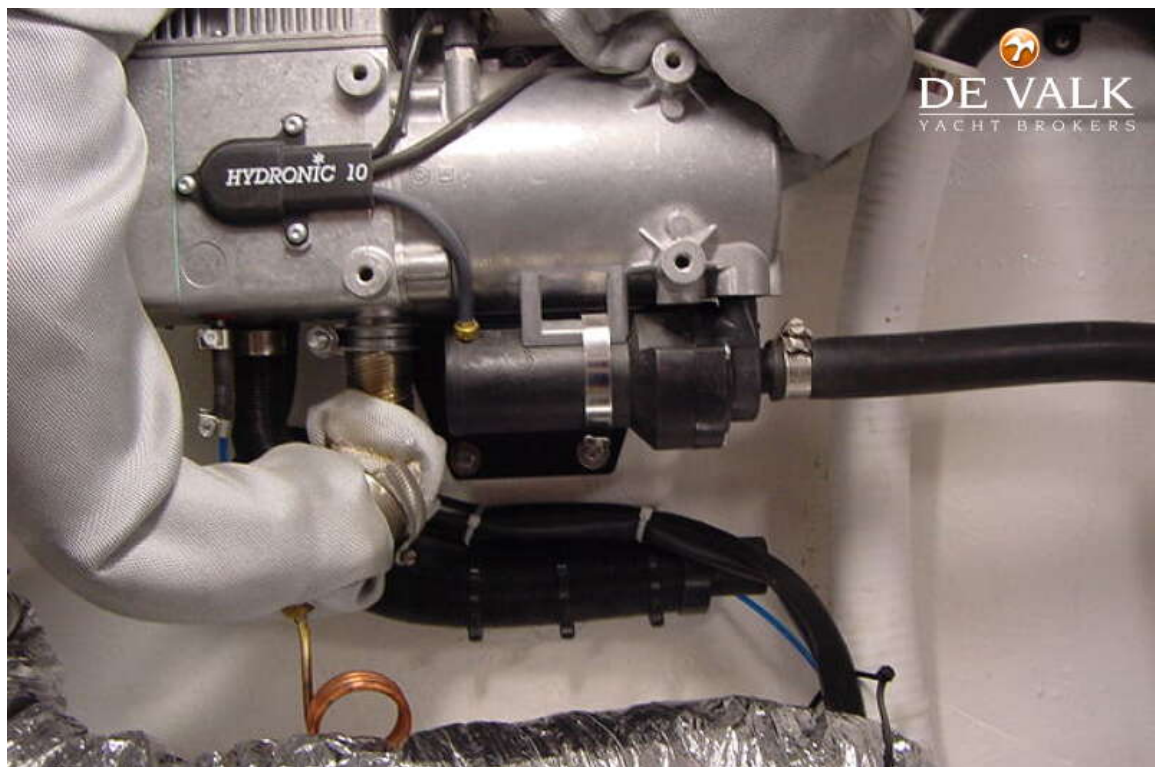
HANS CHRISTIAN 48T



HANS CHRISTIAN 48T



HANS CHRISTIAN 48T



HANS CHRISTIAN 48T



HANS CHRISTIAN 48T



HANS CHRISTIAN 48T

