



DE VALK
YACHT BROKERS

PRESIDENT 46



DE VALK
YACHT BROKERS

PRESIDENT 46

BROKER'S COMMENTS

Polyester built President 46, built in 1990. Spacious motor yacht, suitable for long distance cruising and living on board. Over the years many innovations have been made to this President such as, central heating, toilets, solar panels, new sprayhood etc... The President is powered by two strong and reliable Caterpillar diesel engines. Also the motor yacht has a strong Vetus bow thruster, in combination with the two engines this President is very easy to handle.

Jochem Heijermans

SPECIFICATIONS

Dimensions	14.90 x 4.85 x 1.30 (m)	Builder	President Marine LTD
Built	1990	Cabins	3
Material	GRP	Berths	10
Engine(s)	2 x Caterpillar 3208 diesel	Hp/Kw	2 x 376.00 (hp), 276.00 (kw)
Asking price	sold (VAT)	Lying	elsewhere / Not at sales office

CONTACT

Sales office	De Valk Belgium	Telephone	+32 586 80 218
Address	1401 PT Nieuwpoort BE	E-mail	belgium@devalk.nl

DISCLAIMER

These particulars are given in good faith as supplied but cannot be guaranteed.



PRESIDENT 46

GENERAL

Model	PRESIDENT 46
Type	motor yacht
LOA (m)	14,90
Beam (m)	4,85
Draft (m)	1,30
Headroom (m)	2,00
Year built	1990
Builder	President Marine LTD
Country	Taiwan
Displacement (t)	27
CE norm	NA
Hull material	GRP
Hull colour	off-white
Hull shape	deep-V
Keel type	long keel
Superstructure material	GRP
Rubbing strake	rubber
Deck material	GRP
Deck finish	teak
Superstructure deck finish	non-skid moulded in
Cockpit deck finish	teak
Antifouling (year)	(2020)
Window frame	aluminium
Window material	tempered glass Tinted
Deckhatch	yes
Portholes	aluminium
Insulation	foam
Flybridge	yes
Radar arch	collapsible
Mast can be lowered	hydraulic



Fuel tank (litre)	stainless steel 1000
Fuel tank 2 (litre)	1000
Level indicator (fuel tank)	yes
Freshwater tank (litre)	stainless steel 960
Level indicator (freshwater)	yes
Blackwater tank (litre)	Not connected
Blackwater tank extraction	deck extraction + pump
Wheel steering	hydraulic
Inside helm position	yes
Flybridge helm position	hydraulic

ACCOMMODATION

Cabins	3
Berths	10
Interior	teak
Floor	teak and holly
Aft deck	yes
Saloon	yes
Headroom saloon (m)	2
Heating	central heating ACV
Dinette	yes
Dinette to convert into berth	yes
Sliding door to aft deck	yes
Galley	yes
Countertop	corian
Sink	stainless steel
Cooker	induction 4 burner
Microwave/oven combi	Becker (2018)
Fridge	Liphair
Freezer	yes
Hot water system	220V or central heating



Water pressure system	electrical
Kettle	yes
Coffee maker	yes
Crockery	yes
Owners cabin	French bed
Bed length (m)	2.00 x 1.40
Wardrobe	hanging/drawers/shelves
Bathroom	en suite
Toilet	en suite Vetus (2013)
Toilet system	electric Vetus (2013)
Wash basin	in the bathroom
Shower	en suite
Guest cabin 1	bunk bed
Bed length (m)	2x 2.00 x 0.70
Wardrobe	hanging and drawers
Guest cabin 2	French bed
Bed length (m)	2.00 x 1.40
Wardrobe	hanging/drawers/shelves
Bathroom	en suite
Toilet	en suite Vetus (2013)
Toilet system	electric Vetus (2013)
Wash basin	in the bathroom
Shower	en suite
Extra info	Towel heating
Washing machine/dryer combi	Indesit

MACHINERY

No of engines	2
Make	Caterpillar
Type	3208
HP	376



PRESIDENT 46

kW	276,00
Fuel	diesel
Year installed	1990
Engine hours	3100
Engine cooling system	freshwater heat exchanger
Drive	shaft
Engine controls	electrical
Gearbox	hydraulic
Bowthruster	electric Vetus 130 Kgf
Exhaust	watercooled
Thrust bearing	yes
Propeller type	fixed
Propeller blades	4
Propeller shaft material	stainless steel
Shaft lubrication	water
Electric bilge pump	yes
Electrical installation	12V/24V/220V
Generator	Westerbeke 4.4KW
Running hours generator	1200
Batteries	yes
Start battery	4x 12V/100Ah (2020)
Service battery	3x Varta 12V/150Ah
Generator battery	1x 12V/80Ah
Bowthruster battery	2x 12V/180Ah
Battery monitor	yes
Battery charger	ADM 220V/40Ah + Victron 12V/50Ah (2011)
Inverter	Victron Phoenix 12V/2500W (2011)
Solar panel	Monokristal 4x 100W + 2 Victron blue solar charger controller
Shorepower	with cable

NAVIGATION



Compass	VDO
Compass on flybridge	VDO
Electric compass	yes
Depth sounder	Focus
Log	Focus
Windset	Autohelm
Fish finder	Navman Datahelm 8120
VHF	Navman 7100
Autopilot	Necomarine 892 CU + repeater on flybridge
Rudder angle indicator	Neco
Radar	Furuno RDP-076
Plotter/GPS	Navman Datahelm 8120
Camera	yes
Navigation lights	yes
Searchlight	yes

EQUIPMENT

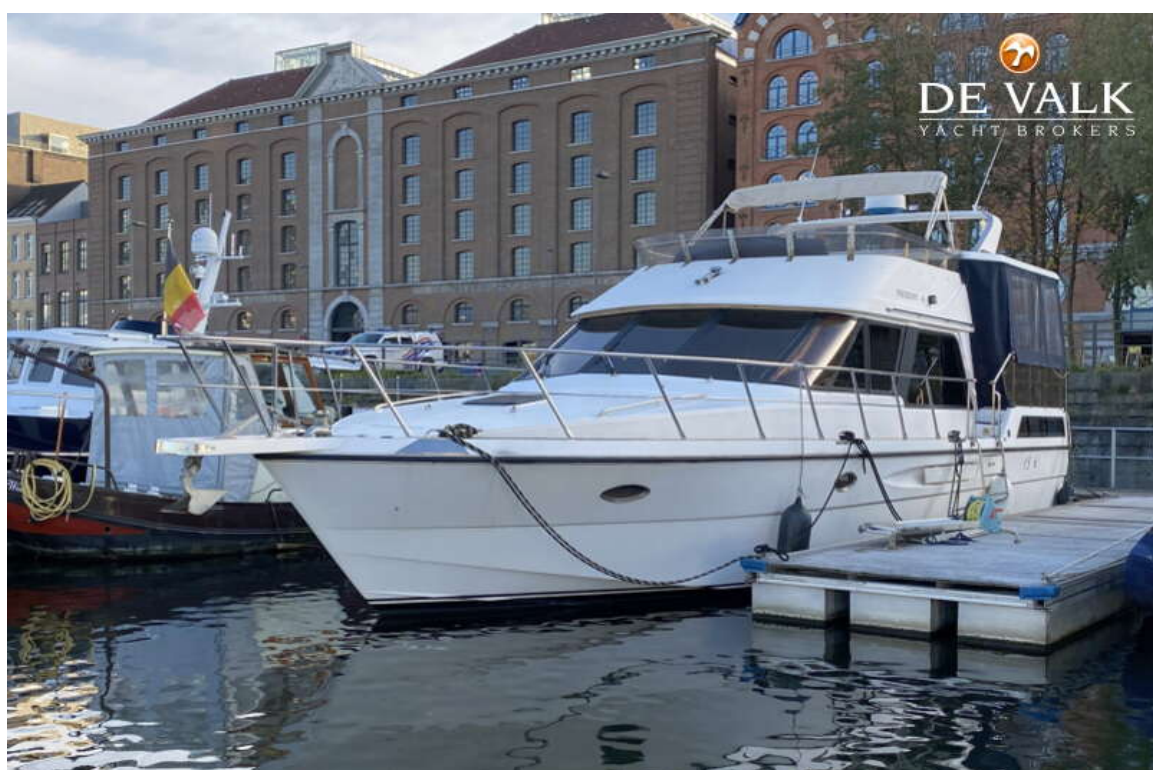
Fixed windscreen	yes
Cockpit cover	(2020)
Window cover	yes
Cockpit cushions	yes
Cockpit table	yes
Cockpit chairs	yes
Bathing platform	yes
Boarding ladder	stainless steel
Gangway	yes
Deck shower	W+C
Anchor	
Anchor chain	40m
Windlass	electrical
Capstan	yes



Deck wash	yes
Davits	
Davits controls	electrical
Sea railing	stainless steel
Grab rail (superstructure)	stainless steel
Railing side opening gates	2x
Pushpit	yes
Pulpit	yes
Lifejackets	yes
Wiper	2x
Window ventilator	yes
Window heating	yes
Horn	electric
Radar reflector	yes
Fenders	yes
Mooring lines	yes
Spare parts	yes
Tools	yes
TV	yes
TracVision ball	Megasat
Radio-cd player	2x
DVD player	yes
Surround Sound System	Panasonic
Sub-woofer	yes
Cockpit speakers	yes
Speakers in salon	yes
Speakers in cabin	(not installed)
Clock - barometer	yes
Fire extinguisher	yes
Extinguisher in engine room	yes
Extra info	Speakers flybridge



PRESIDENT 46



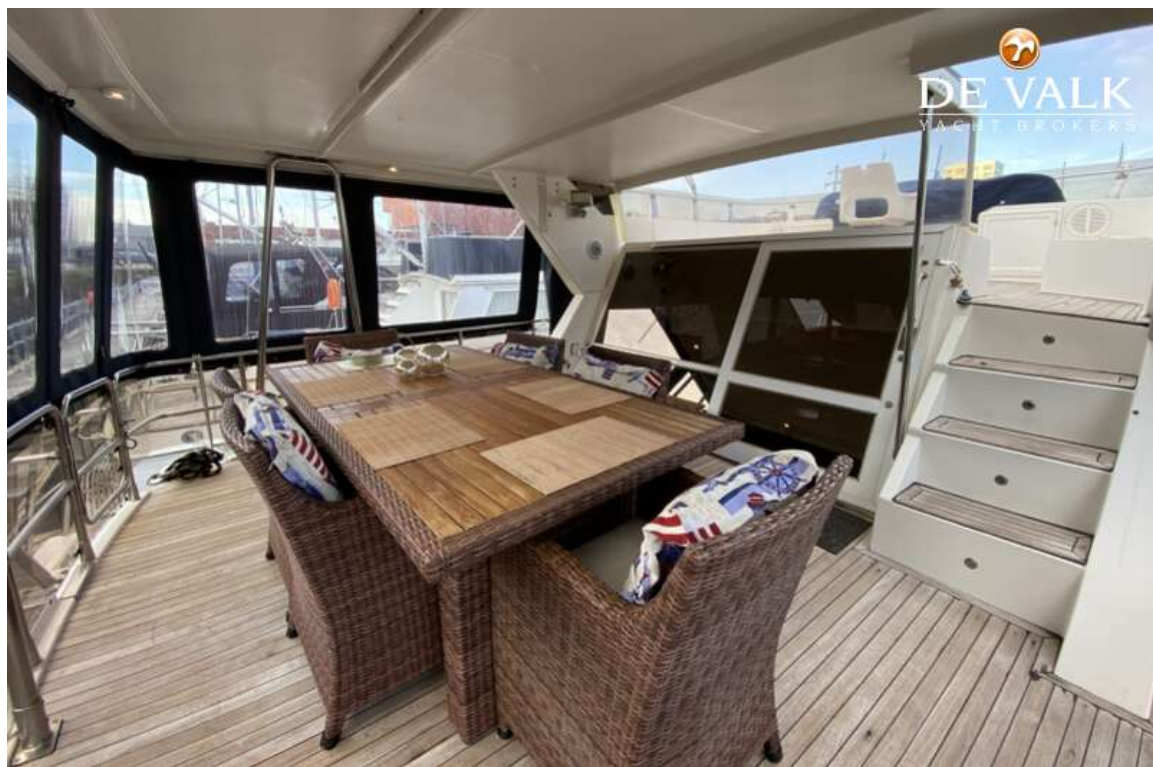
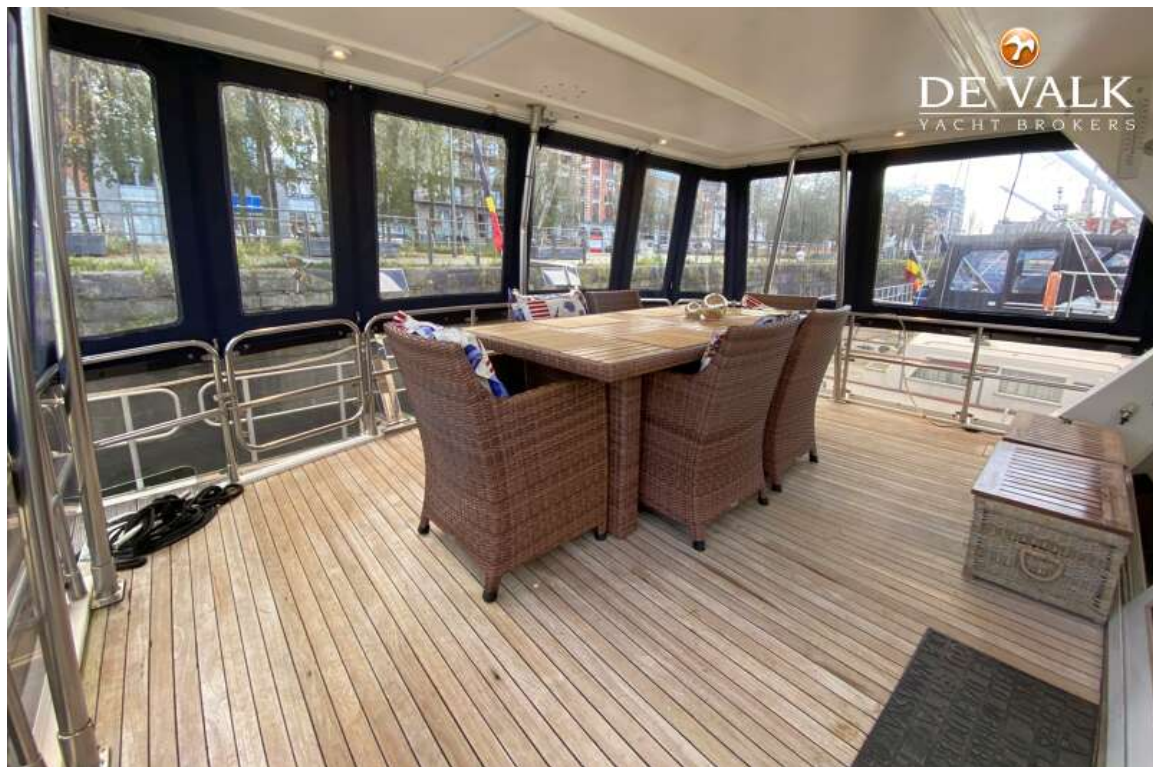
PRESIDENT 46



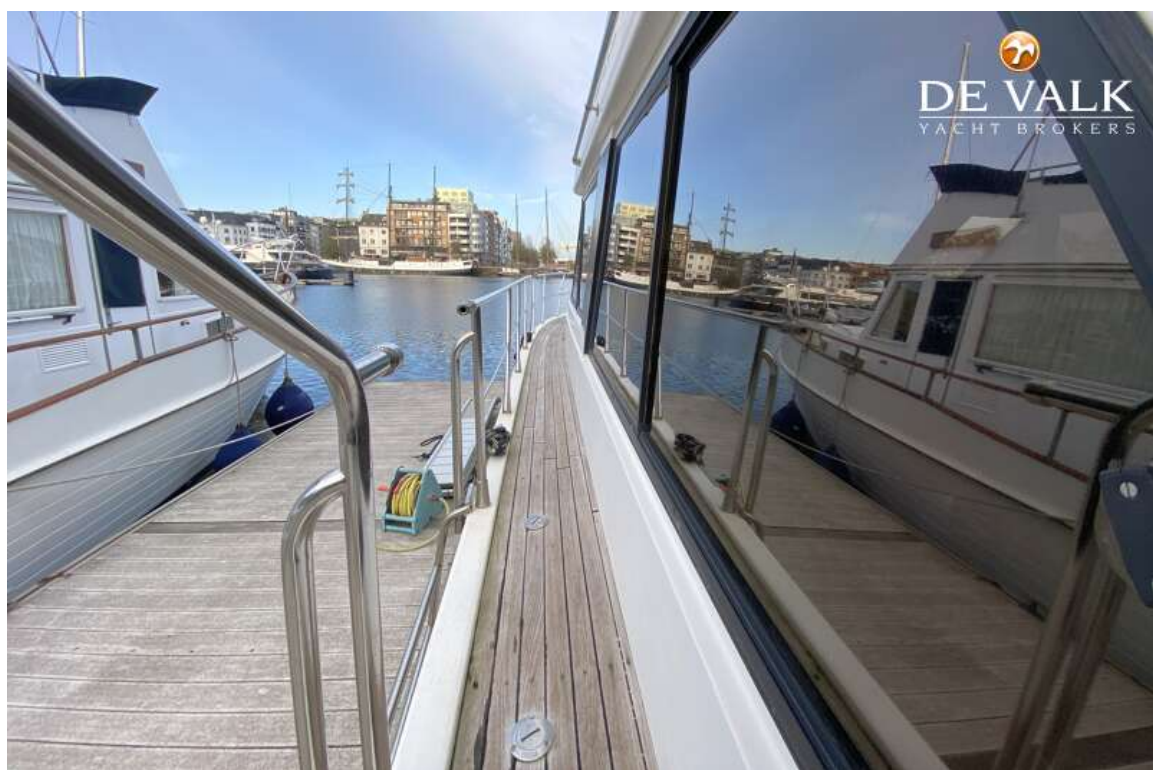
PRESIDENT 46



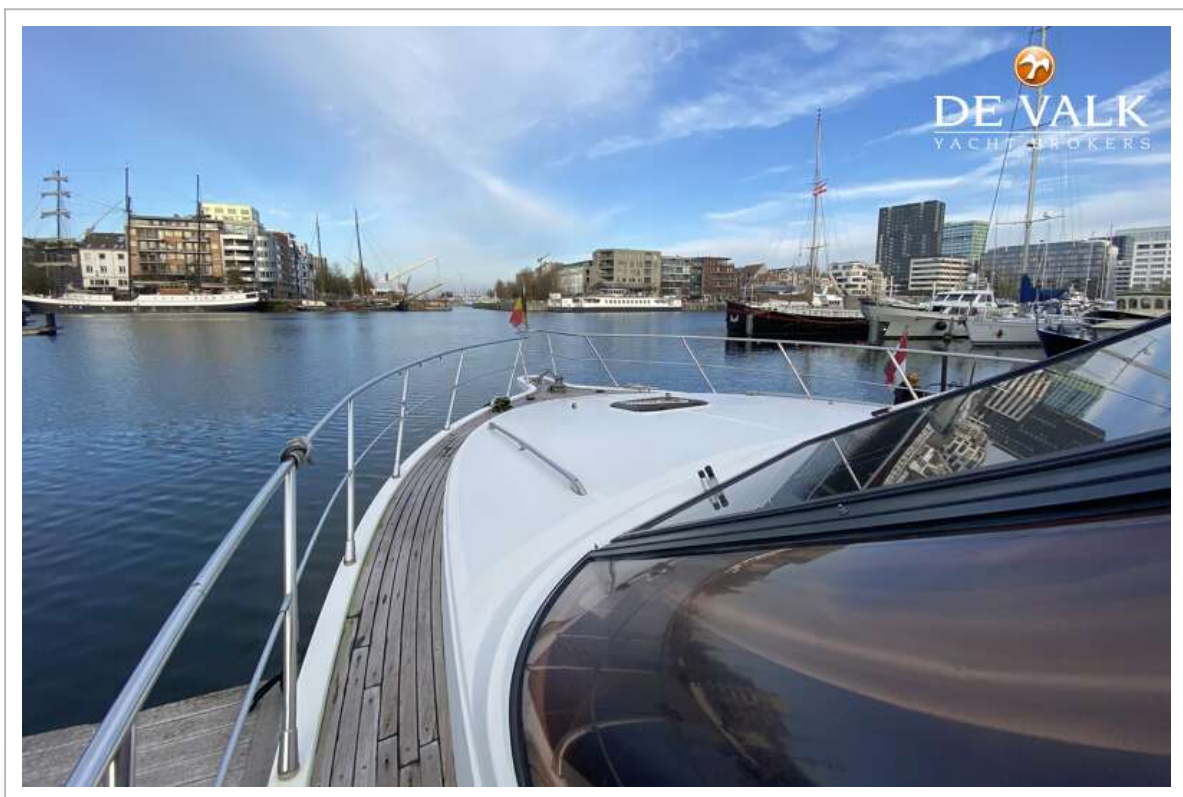
PRESIDENT 46

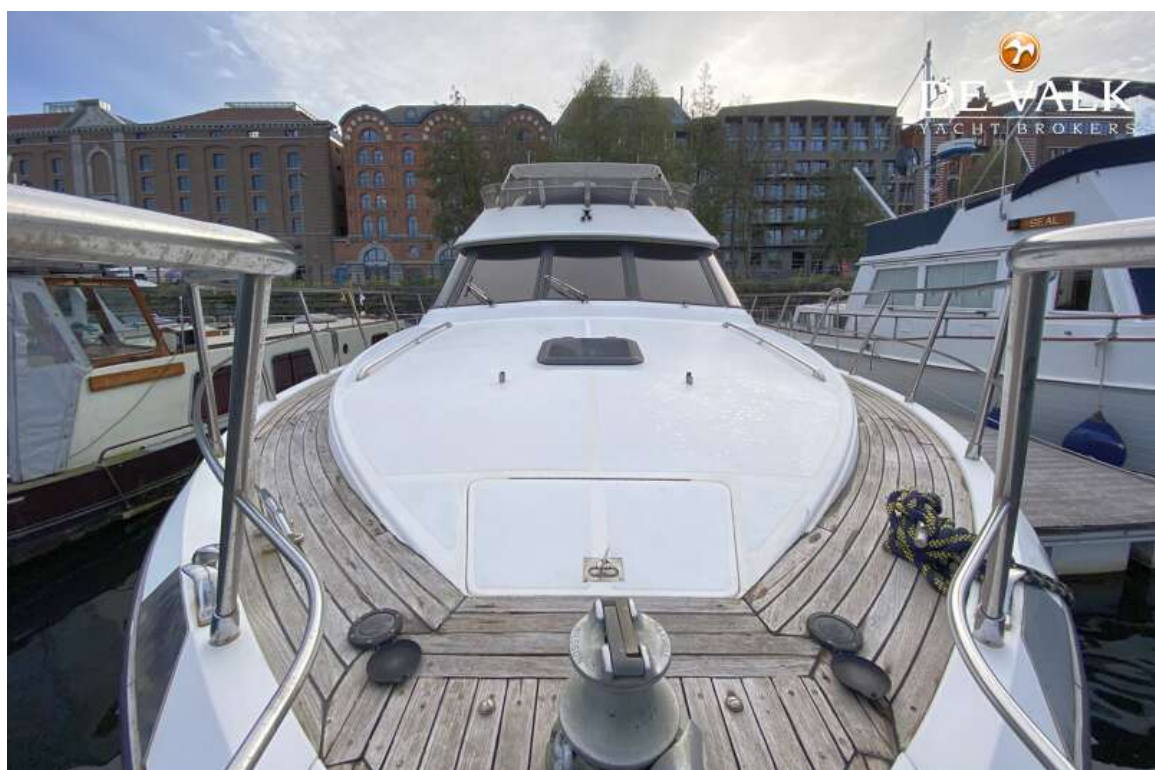


PRESIDENT 46

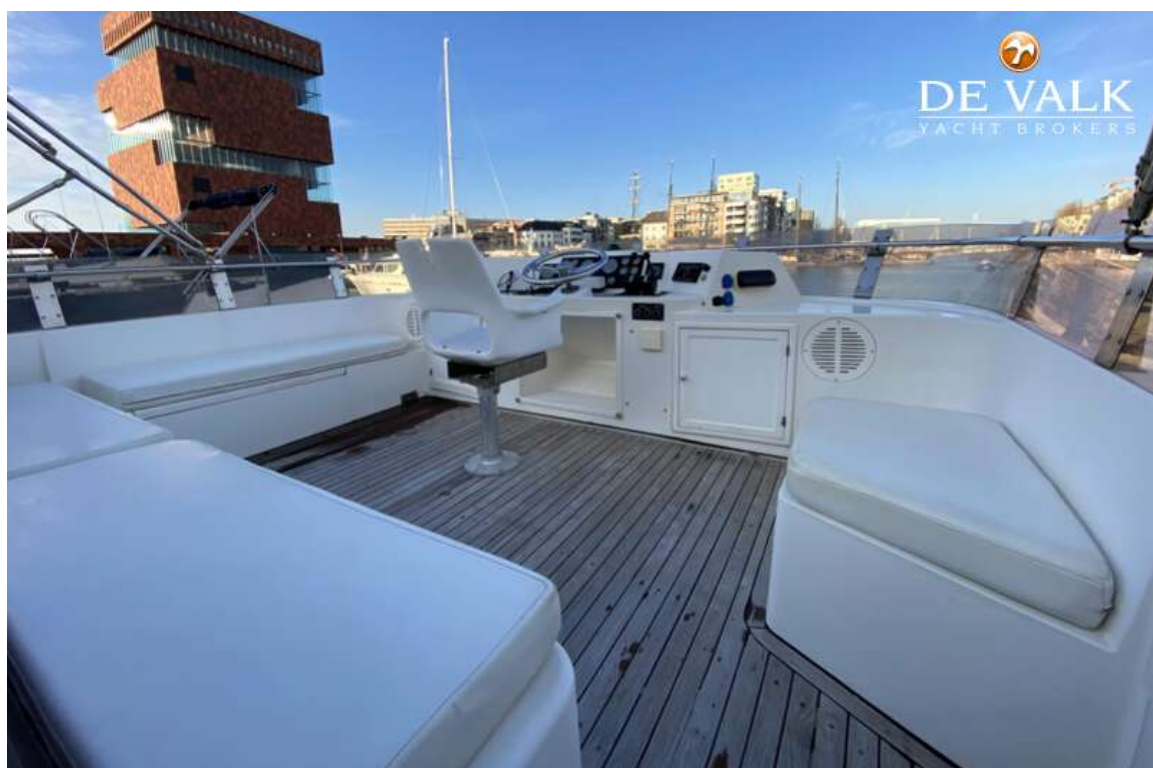


PRESIDENT 46

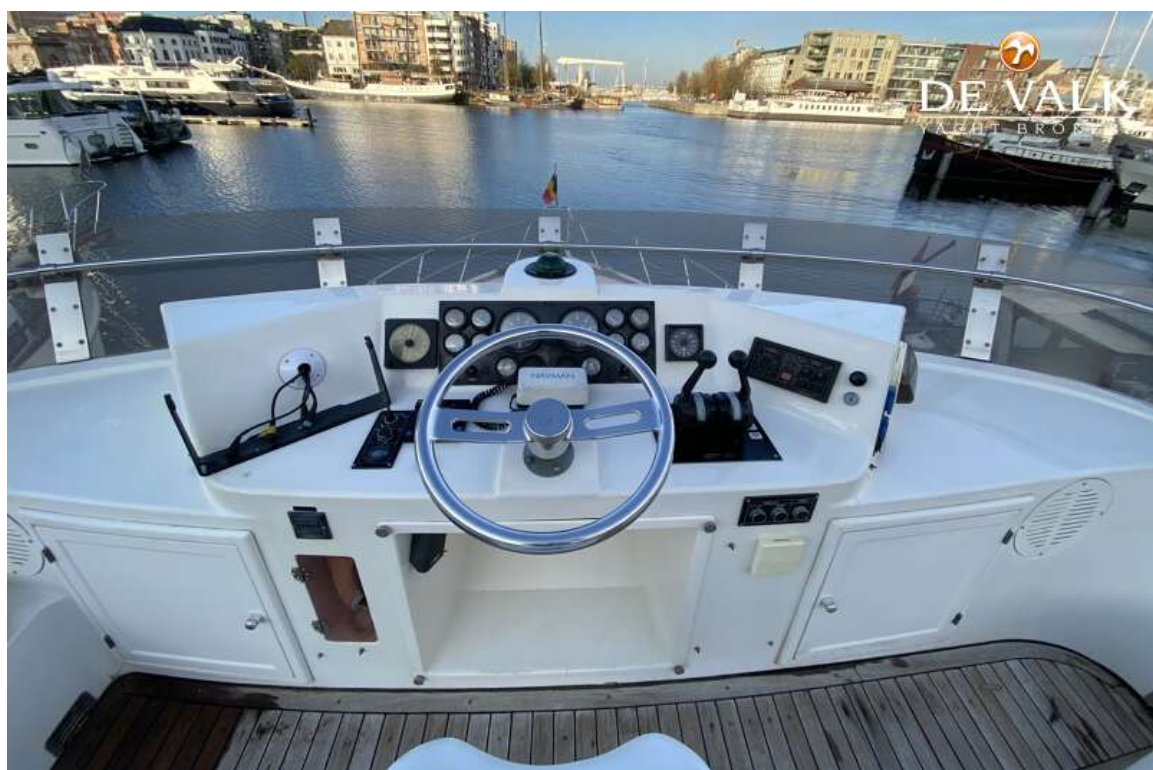




PRESIDENT 46



PRESIDENT 46



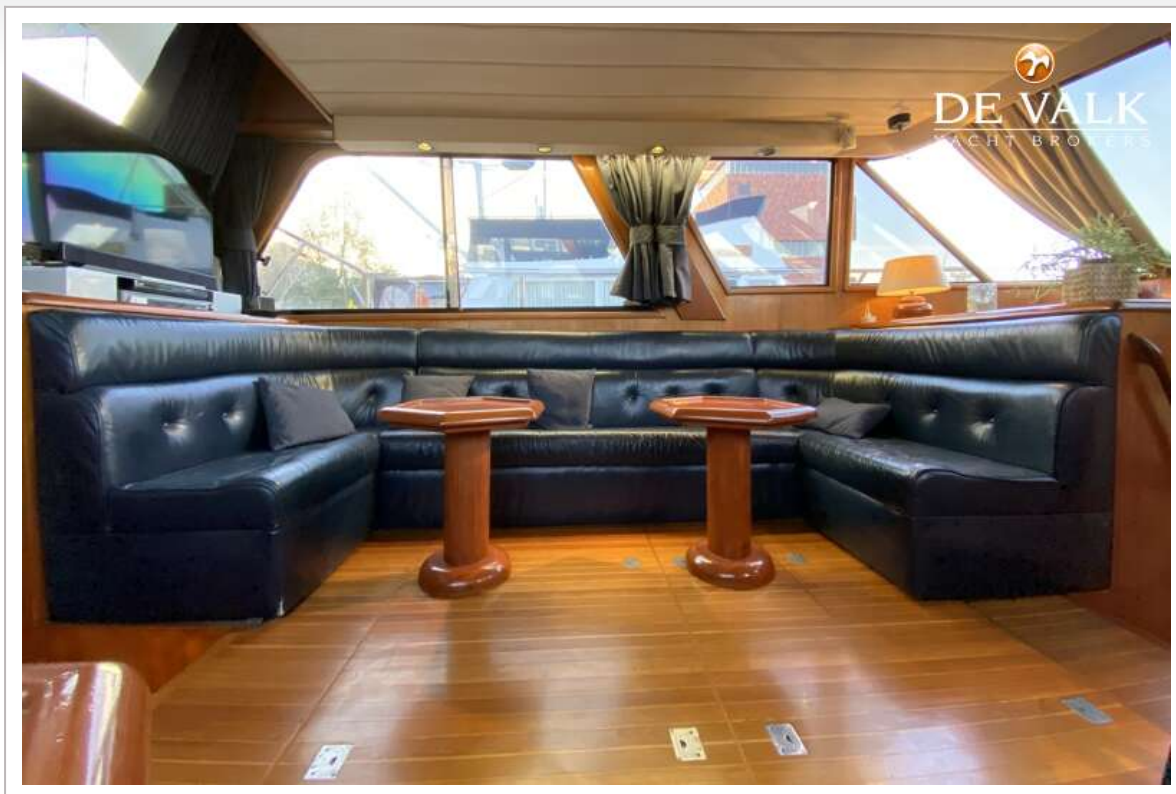
PRESIDENT 46



PRESIDENT 46



PRESIDENT 46



PRESIDENT 46



PRESIDENT 46

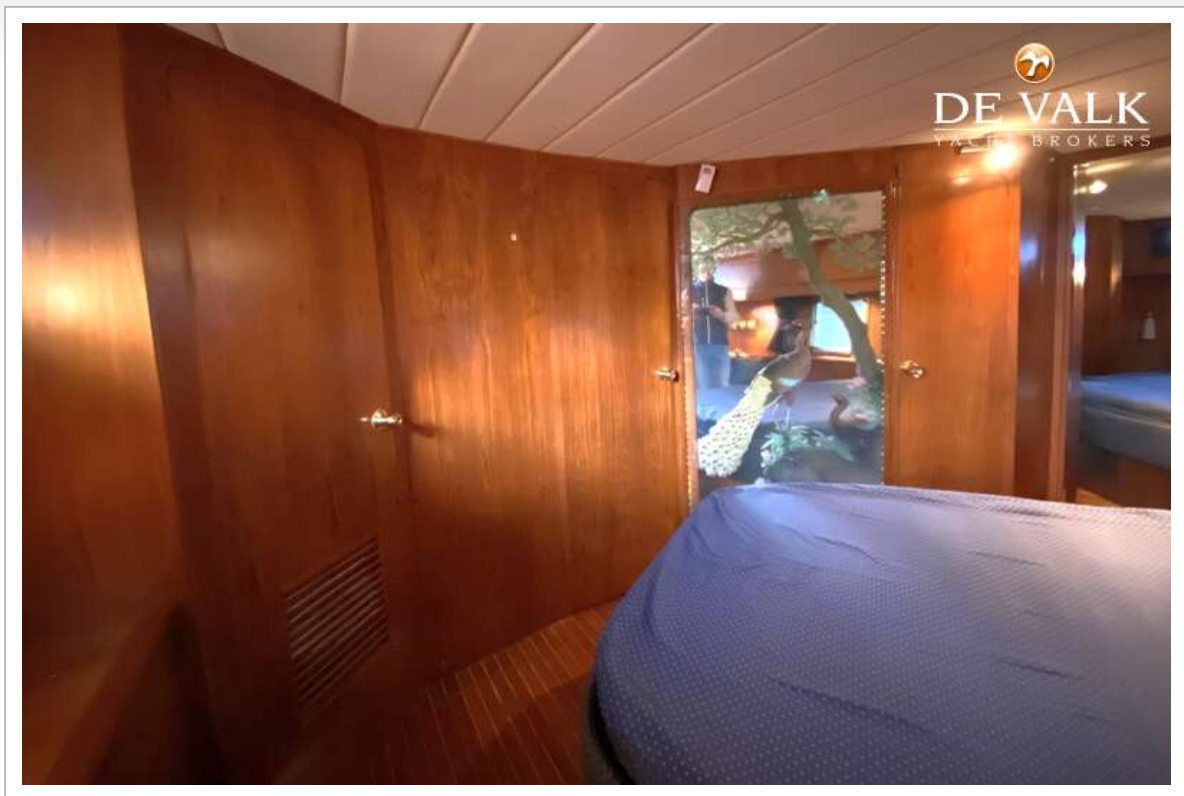


PRESIDENT 46



PRESIDENT 46

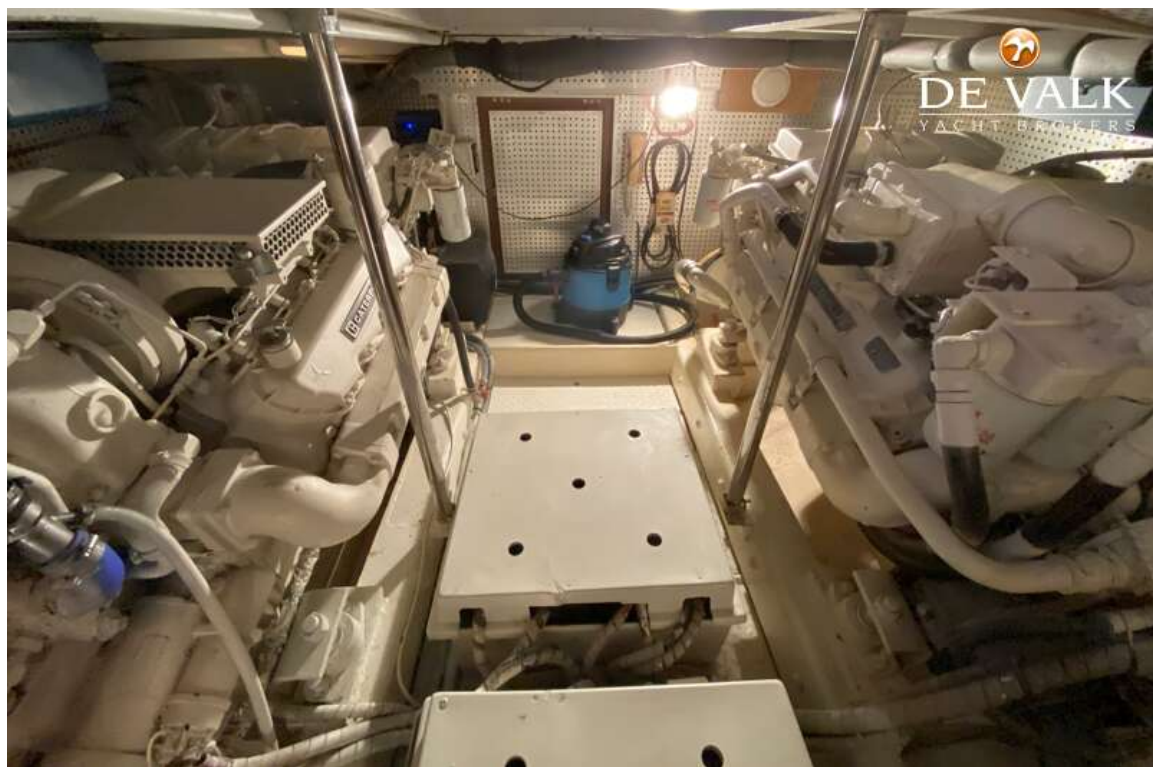




PRESIDENT 46



PRESIDENT 46



PRESIDENT 46



PRESIDENT 46

